



Official Publication of the Minnesota Corn Growers Association

## West Central farmer elected MCGA president for 2015-16

The Minnesota Corn Growers Association (MCGA) state board of directors recently elected Noah Hultgren as its new president for 2015-16. Hultgren grows corn, soybeans, sugar beets, edible beans and canning vegetables on his family farm near Raymond, Minn., in Kandiyohi County.



Noah Hultgren is the new MCGA president.

Hultgren is a fourth-generation family farmer and was elected to the MCGA board in 2011. He replaces Bruce Peterson from Northfield, whose one-year term as president ended on Sept. 30.

“MCGA has accomplished a lot in recent years on behalf of corn farmers, especially in the areas of research, environmental stewardship and ethanol,” Hultgren said. “The next step is to build on those achievements and leverage them in a way that connects with non-farming consumers. Corn farmers have an amazing story to tell. We need to

make sure we’re telling it and making our voices heard outside of the farm community.”

When Noah isn’t farming, he spends time with his wife Paula and their three daughters. He’s also a licensed realtor, an appraiser trainee and enjoys fantasy sports, golfing, deer hunting, fishing and snowmobiling.

Also at its September meeting, MCGA elected St. James farmer Harold Wolle, Jr., as first vice president; Tim Wiersma, Wells, treasurer, and Kirby Hettver, DeGraff, secretary. ■

## Interactive online map makes it easy to learn about conservation efforts of Minnesota farmers

An easy-to-use interactive online map is helping non-farmers better understand common conservation practices used on Minnesota farms.

“Conservation Practices on Minnesota farms” is a new, interactive, online story map from Minnesota

Official publication of the Minnesota Corn Growers Association

Published six times a year from the state MCGA/MCR&PC office: 738 First Avenue East Shakopee, MN 55379

November 2015

Corn Talk Advisory Committee:

- Noah Hultgren
- Harold Wolle
- Doug Albin
- Chad Willis
- Adam Birr
- Editor: Adam Czech

contents

- New MCGA president **1**
- Conservation map **1**
- Buffer law update **3**
- GMO labeling standard **3**
- Judge halts WOTUS **4**
- Flex-fuel pumps **4**
- Cover crops research **5**
- MCGA hosts trade teams **6**
- Improving pollinator habitats **7**
- MCGA and Gophers partnership **8**
- MN Ag EXPO **8**
- EXPO registration form **9**
- EXPO tentative schedule **10**
- MCGA pre-resolutions **10**
- Allied partners **10**
- Children's Museum of Southern MN **11**
- Events calendar **12**

Online map of conservation practices

continued from page 1

practices found on farms throughout the state.

By simply clicking on a pin located on a map of Minnesota, or using a side-photo navigation bar, users can view pictures and descriptions of the many conservation practices Minnesota farmers use to protect land, soil and water resources. The map can be viewed by going to [mncorn.org](http://mncorn.org) and clicking on the "Conservation Story Map" link near the top of the page.

"There's an untold story across Minnesota's farmland involving common, everyday conservation practices used by many Minnesota farmers," said Noah Hultgren, a family farmer in Raymond and MCGA president. "To farmers, things



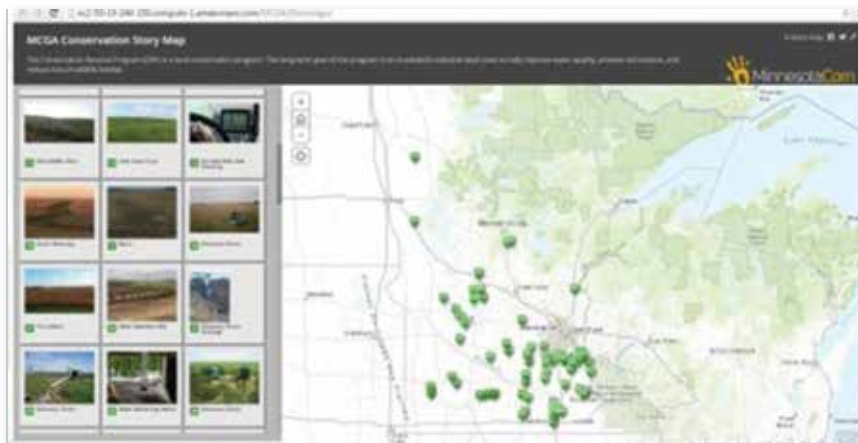
Grass waterways are one example of conservation practices highlighted in MCGA's new Conservation Story Map.

like buffer strips or grass waterways are often part of everyday life on the farm. To a non-farmer with questions about how his or her food is grown, these 'common' conservation efforts are a big

Corn Growers Association (MCGA) that highlights "everyday" conservation

deal. They want to know more about the conservation efforts of farmers, and if we don't tell them, they might not get the complete – or accurate – story."

There are nearly 200 photos and descriptions currently on the map. Pictures were collected from farms



A screen shot of MCGA's new Conservation Story Map.

throughout the state, ranging as far north as Hallock all the way down to the Minnesota-Iowa border. ■

Want to submit a photo for the Conservation Story Map?

**MCGA plans to continue adding pictures until the map is completely dotted in green pins, but we need your help.**

**If you would like to contribute a photo, email it to [aczech@mncorn.org](mailto:aczech@mncorn.org) along with a short description of what is pictured and the county or township where it's located. Examples of pictures include grass waterways, buffer strips, conservation tillage, CRP land or windbreaks.**

**Your identity will remain anonymous and confidential.**

# An update on Minnesota's new buffer law

**m**innesota Corn Growers Association (MCGA) has been busy meeting with legislators, agriculture and drainage professionals, the Board of Soil & Water Resources, and the Department of Natural Resources (DNR) prior to the implementation of Minnesota's new buffer law. MCGA is working hard to ensure that implementation of the law is fair and transparent.

DNR maps detailing exactly what waterways will require buffers are scheduled to be finalized next summer. We could see early drafts of some maps as soon as January. Meantime, it's important for corn farmers to take inventory of their land so they're ready to compare their own information with the buffer maps released by DNR.

Evaluating the criteria the DNR is using to develop these maps, and challenging discrepancies in the

maps will go much smoother if farmers are fully prepared with information about their own farms.

Timelines in the buffer law call for an average buffer of 50 feet and a minimum of 30 feet on all public shorelands by November 2017. By November 2018, buffers of 16.5 feet must be installed on all public ditches. Alternative practices are allowed and local Soil and Water Conservation Districts must work with landowners in installing buffers. ■



**MCGA is meeting with government officials and elected leaders on the new buffer law.**

## CFSAF calls for uniform GMO labeling standard

**a**nna Boroff, senior public policy director for Minnesota Corn Growers Association, recently traveled to Washington, D.C., with members of the Coalition for Safe Affordable Food (CFSAF) to urge passage by Congress of a uniform, national labeling standard for GMO foods.

"With farming such a vital piece of Minnesota's economy, I was excited by the opportunity to discuss why a uniform, national food labeling standard makes sense for Minnesota farmers,"

Boroff said. "There is enough unpredictability involved in farming, we certainly don't need more. Unfortunately, if Congress doesn't act soon, that's exactly what will happen. It's time for the Senate to pass reasonable legislation that gives farmers and consumers a consistent, transparent labeling standard."

A uniform, national food labeling standard will ensure that consumers in all 50 states have access to the same labeling information, bringing consistency and transparency to the marketplace. Additionally, a GMO-free certification program will provide consumers who choose to purchase non-GMO items a reliable means of doing so. ■



**Anna Boroff**

# Judge halts WOTUS implementation

On Oct. 9, the U.S. Court of Appeals for the Sixth Circuit issued a nationwide stay against the enforcement of the Environmental Protection Agency's (EPA) and Army Corp of Engineers' Waters of the United States (WOTUS) rule.

"Today's decision is great news for America's farmers and ranchers," said National Corn Growers Association (NCGA) President Chip Bowling. "WOTUS was supposed to make things clearer for farmers about their responsibilities under the Clean

Water Act. This rule is anything but clear. We are confident that the courts will eventually strike down EPA's WOTUS rule altogether. The Army Corps of Engineers has already said the rule is not based on science or law and is unlikely to withstand a legal challenge."

On Nov. 4, the Senate passed a bipartisan resolution that would end WOTUS but failed to pass legislation that required a 60-vote threshold. House majority leader Kevin McCarthy has said that he would bring the Senate resolution to the House floor for a vote, but President Obama is likely to veto the resolution. These votes were largely a test of support for blocking the rule legislatively by including policy language in a 2016 spending bill that Congress will consider in December.

MCGA will continue working with NCGA and other partners to keep Minnesota corn farmers up to date on the latest WOTUS developments. ■

# USDA grant to bring up to 620 new flex-fuel pumps to Minnesota

Minnesota will soon be home to as many as 620 new flex-fuel pumps that give consumers the option of filling up with regular unleaded, or fuel blends like E15 and E85 that contain a higher percentage of homegrown ethanol.

Agriculture Secretary Tom Vilsack announced in the fall that 21 states will receive grants through the Biofuel Infrastructure Partnership (BIP) to add infrastructure needed to supply more renewable fuel to America's drivers. Since announcing the program in May 2015, the U.S. Department of Agriculture's (USDA) Farm Service Agency (FSA) received applications requesting over \$130 million, outpacing the \$100 million that is available. With more than a 1:1 match from private and state resources, USDA estimates that the BIP grants will support nearly 5,000 pumps at over 1,400 fueling stations across the country.

Thanks to the investments of a broad coalition that includes the Minnesota Corn Research & Promotion

Council, Minnesota Department of Agriculture, American Lung Association in Minnesota, Minnesota Biofuels Association and Growth Energy, more than 12 percent of those pumps will be installed at Minnesota fueling stations. The Minnesota portion of the grant will total \$8 million and be matched by the coalition.

Before the USDA grant funding, coalition investments had already resulted in over 40 Minnesota stations installing about 120 flex-fuel pumps that dispense a combination of regular unleaded, E15, E30 and E85.

Nationally, the USDA grant is expected to more than double the number of stations that offer intermediate ethanol blends such as E15. Because Minnesota has made the investments and efforts to install flex-fuel infrastructure and provide consumers access to homegrown biofuels, Minnesota leads the nation with over 12 percent of its fuel supply containing ethanol. ■

# Corn farmers fund research to help overcome obstacles to cover crops in Minnesota

Using funds from Minnesota's corn check-off, Minnesota Corn Growers Association (MCGA) invests in research that seeks to make cover crops a more realistic and feasible option for all Minnesota corn farmers.

Cover crops are planted in fields to protect the soil post-harvest. Generally, cover crops are most effective when planted after small grains and canning crops that are harvested earlier in the season. MCGA research is examining ways to



**Nick Goeser, manager of the soil health program for the National Corn Growers Association, explains the benefits of cover crops and reduced tillage during a field day on a farm near Lake Wilson, Minn.**

improve cover crop use in fields where traditional row crops such as corn or soybeans are planted.

"We want to make sure farmers are using cover crops on lands where they're most effective," said Dr. Paul Meints, MCGA research director. "And if a cover crop isn't feasible, our research helps farmers better understand alternative conservation practices that can achieve results similar to cover crops."

Some farmers attempt to plant cover crops by flying on seed into standing crops, but establishment is heavily dependent on weather and rainfall. Whether Mother Nature cooperates enough to get a cover

crop established or not, the costs farmers incur to plant a cover crop remain. Cover crops are more widely used in southern states because of their warmer fall temperatures.

"Minnesota farmers are often still harvesting after a killing frost," Meints said. "That's why it's challenging to make cover crops work up here."

Timing is also important because farmers don't want the newly established cover crop to interfere with fall harvest of the standing crop. Because farmers have only a short amount of time to establish cover crops before Minnesota's cold winter kicks in and the snow starts flying, using cover crops is much more complicated than it appears.

MCGA has supported several field plots throughout the state where researchers gather data on cover crops. On-farm demonstration sites and experimentation also help

determine what works and what doesn't work. As research efforts progress and data is collected, the path for making cover crops more successful in Minnesota will become clearer.

"We're seeing advancements in technology and new programs that are moving cover crops in a more mainstream direction here in Minnesota," said Jodi DeJong-Hughes, a U of M regional extension educator who works on several soil health and water quality projects in partnership with MCGA. "Farmers are developing a better understanding of the benefits of cover crops, but feasibility remains an issue. That's why continued research is so important." ■

# MCGA hosts trade teams, participates in Mexico trade mission

**b**efore an agriculture goodwill trade mission team participated in a signing ceremony in Minneapolis on Sept. 21, they stopped at the Roger Toquam family farm



**A trade delegation from Taiwan visited Roger Toquam's farm in September and signed a letter of intent to purchase a large amount of U.S. corn.**

near Blooming Prairie to see firsthand what Minnesota agriculture is all about.

The Toquam family provided an in-depth tour and overview of their operation, answering questions along the way. There was even an opportunity for the Taiwan team to take selfies in the corn and soybean fields and climb into the seat of a combine and tractor.

At the Minneapolis signing ceremony, the Taiwan delegation signed a letter of intent to purchase a large amount of U.S. corn in 2016-17. Participants in the ceremony included Gov. Mark Dayton, Agriculture Commissioner Dave Frederickson, and then-Minnesota Corn Growers Association (MCGA) President Bruce Peterson.

## MENA team tours farm

A U.S. Grains Council (USGC) team of up-and-coming procurement managers and directors of Middle East and North African (MENA) grain buying companies traveled to Bellingham, Minn., to visit the family farm of Dwight Mork on Sept. 14 to see up-close the advantages of purchasing U.S. corn and co-products.

Several other area farmers and ag specialists in the Bellingham region also attended the event and provided additional insight into how Minnesota farmers grow food, feed, fiber and fuel for the entire world while taking care of the land for the next generation. Team members came from Egypt, Morocco, Tunisia and Saudi Arabia.

The Middle East and North Africa region has already purchased 3.5 million metric tons (137.8 million bushels) of U.S. corn for the 2014-2015 marketing year as of Aug. 20. However, last year at the same time the region had purchased 4.2 million tons (165 million bushels) of U.S. corn.



**Dwight Mork visits with a Middle Eastern grain buyer on his farm near Bellingham, Minn.**

continued on following page

## MCGA hosts trade teams

continued from page 6

### Mexico trade mission

Dan Root, a Minnesota Corn Growers Association (MCGA) board member, recently spent a week in Mexico with Gov. Mark Dayton meeting with agriculture, trade and manufacturing leaders in Mexico City and Guadalajara.

Also included in the 45-member delegation with Root were representatives from the Minnesota Soybean Growers, Minnesota Soybean Processors, Minnesota Pork Producers,



Dan Root, right, next to Agriculture Commissioner Dave Frederickson during a trade mission to Mexico.

Agriculture Commissioner Dave Frederickson and Congressman Tom Emmer.

Sales to Mexico accounted for 10 percent of Minnesota's total exports in 2014. Also in 2014, Minnesota sold almost \$592

million worth of food to Mexico, up more than 77 percent from the previous year. Over 95 percent of Mexico's soybean needs and a large amount of its field corn are imported.

"We were exploring value-added opportunities for Minnesota farmers," Root said. "The contacts we made and discussions we had will help us move forward in improving direct trade relations with Mexico that benefit Minnesota farmers." ■

# MN corn growers work to improve pollinator habitat

The Minnesota Corn Growers Association (MCGA) and its more than 7,000 members made a commitment to improving pollinator habitat over the last year. Here is a quick update on those activities:

- About 4,000 pollinator-friendly wildflower seed packets have been distributed by MCGA at events attended by both farmers and non-farmers. The free seed-mix packets are an easy way to raise awareness about the importance of pollinator habitat, and help people take action on their own property by adding habitat and making an actual difference.

- Along with the seed packets, MCGA also distributes a free pollinator guide to help farmers and non-farmers develop ways they can add pollinator habitat on their own land. We want people to take action, so the guide provides practical steps on how to increase habitat.

- A pollinator plot planted at the MCGA office in Shakopee is doing well. The mix of pollinator-friendly plants are prime habitat for bees and butterflies. Since the plot is located near a busy road, it's also a great way to show folks driving by what can be done to improve pollinator habitat.



MCGA showcased its pollinator efforts at this year's Farmfest event in August.

MCGA's efforts to increase pollinator habitat is an ongoing effort. Look for MCGA to continue distributing pollinator seed packets and free pollinator guides at future events. ■

# MCGA's partnership with Gopher Sports going strong

**m**CGA's partnership with Gopher Sports is bringing a positive message about corn farming to a mostly non-farm audience:

■ During every home football game, an MCGA Homegrown Farm Family of the Game is recognized on the field for its conservation efforts.



The Mackenthun family from McLeod County was recognized as the MCGA Homegrown Farm Family of the Game at the Gophers season-opener.

■ The Zamboni at Mariucci Arena

features a MCGA-themed design.

■ Two new quirky radio ads featuring a corn-farming barbecue champion and corn-farming zookeeper air during Gophers sporting events.



This conservation and corn-themed Zamboni will clean the ice at Mariucci Arena this season.

■ Signage and displays are prominently placed throughout Williams Arena. ■

# MN Ag EXPO set for Jan. 27-28

**a**re you ready for two days of the best winter farm trade show and conference in all of Minnesota?

Yes, you read that right: MN Ag EXPO 2016 will be two full days, Jan. 27-28, at the Verizon Wireless Center in Mankato. A complete agenda and lodging information is available at [MNAgEXPO.com](http://MNAgEXPO.com). A registration form can be found on page 9 of this issue of Corn Talk.

MN Ag EXPO is free to attend for all Minnesota corn and soybean farmers and will feature

the usual great lineup of agriculture speakers, insightful educational sessions, a large trade show and numerous networking opportunities.

Minnesota Corn Growers Association will hold its annual live and silent fundraising auction. The Soybean Growers will put on their Beano & Vino fundraising night.

New in 2016 is a special and unique communications and policy forum hosted by Linder Farm Network and Red River Farm Network.

Don't wait. Register today using the form on the following page or go to [MNAgEXPO.com](http://MNAgEXPO.com). See you there! ■







# MN Ag EXPO 2016 | Registration Form

Pre-registration deadline: January 8, 2016. All MCGA and MSGA delegates and alternates should register themselves. For questions, contact Missy at 952-460-3607 or gilbertson@mncorn.org. Complete information below and submit to: MN Ag EXPO, 738 1st Avenue East, Shakopee, MN 55379

## ATTENDEE

Registering as: Attendee\_\_\_ Exhibitor\*\_\_\_ Sponsor\*\_\_\_ Media\_\_\_

First Name \_\_\_\_\_ Last Name \_\_\_\_\_ Company Name \_\_\_\_\_

County Delegates or Alternates: Please check all that apply

County \_\_\_\_\_

Wed., Jan. 27 Soybean Delegate\_\_\_ Soybean Alternate\_\_\_ Thurs., Jan. 28 Corn Delegate\_\_\_ Corn Alternate\_\_\_

Please indicate which meals you will attend

\_\_\_Wednesday, Jan. 27 \*\*Buffet Lunch (12 p.m.) \_\_\_Wednesday, Jan. 27 Buffet Dinner (6 p.m.)

\_\_\_Wednesday, Jan. 27 Beano & Vino Casino Night (7 p.m.)

\_\_\_Thursday, Jan. 28 Breakfast (8 a.m.) \_\_\_Thursday, Jan. 28 Lunch (12 p.m.)

\_\_\_Thursday, Jan. 28, MCGA/MSGA Banquet (6 p.m., seating is limited)

## SPOUSE/GUEST

Registering as: Attendee\_\_\_ Exhibitor\*\_\_\_ Sponsor\*\_\_\_ Media\_\_\_

First Name \_\_\_\_\_ Last Name \_\_\_\_\_ Company Name \_\_\_\_\_

County Delegates or Alternates: Please check all that apply

County \_\_\_\_\_

Wed., Jan. 27 Soybean Delegate\_\_\_ Soybean Alternate\_\_\_ Thurs., Jan. 28 Corn Delegate\_\_\_ Corn Alternate\_\_\_

Please indicate which meals you will attend

\_\_\_Wednesday, Jan. 27 \*\*Buffet Lunch (12 p.m.) \_\_\_Wednesday, Jan. 27 Buffet Dinner (6 p.m.)

\_\_\_Wednesday, Jan. 27 Beano & Vino Casino Night (7 p.m.)

\_\_\_Thursday, Jan. 28 Breakfast (8 a.m.) \_\_\_Thursday, Jan. 28 Lunch (12 p.m.)

\_\_\_Thursday, Jan. 28, MCGA/MSGA Banquet (6 p.m., seating is limited)

## CONTACT INFORMATION

Address \_\_\_\_\_ City \_\_\_\_\_ State \_\_\_\_\_ Zip \_\_\_\_\_

Email \_\_\_\_\_ Phone \_\_\_\_\_

\*Exhibitors/Sponsors: To register as an exhibitor or sponsor, you must first complete the Exhibitor and/or Sponsorship form. For questions, please contact the Minnesota Soybean office at 507-388-1635.

\*\* Wednesday's buffet lunch is limited to those individuals attending the MSGA meetings and/or sponsor sessions.

# MN Ag EXPO

## Tentative Schedule of Events

### Wednesday, January 27, 2016

8:30 a.m. – 5:30 p.m.	Registration Open
10:00 a.m. – 1:00 p.m.	Exhibitor Set Up
9:30 a.m. – 12:00 p.m.	MSGA Delegate Session & Annual Mtg
10:00 a.m. – 10:30 a.m.	Sponsor Session
10:30 a.m. – 11:00 a.m.	Sponsor Session – Pluto Legal
12:00 p.m. – 1:00 p.m.	Buffet Lunch
12:00 p.m. – 6:00 p.m.	MCGA Silent Fundraising Auction Open
1:00 p.m. – 2:00 p.m.	Keynote Speaker – David Okerlund
2:00 p.m. – 6:00 p.m.	Tradeshow Open
3:00 p.m. – 4:00 p.m.	Afternoon Speaker - Bryce Anderson
4:30 p.m. – 5:15 p.m.	MINI Sessions
6:00 p.m. – 7:00 p.m.	Buffet Dinner
7:00 p.m. – 11:30 p.m.	Beano & Vino Casino Night

### Thursday, January 28, 2016

7:00 a.m. – 4:00 p.m.	Registration Open
7:30 a.m. – 8:30 a.m.	MN Corn PAC Breakfast
8:00 a.m. – 2:00 p.m.	Tradeshow Open
8:00 a.m. – 8:30 a.m.	Breakfast Sandwiches
8:30 a.m. – 9:15 a.m.	Morning Markets Early Riser Session
8:30 a.m. – 4:00 p.m.	MCGA Silent Fundraising Auction Open
9:30 a.m. – 12:00 p.m.	MCGA Delegate Session & Annual Mtg
10:00 a.m. – 10:30 a.m.	Sponsor Session
10:00 a.m. – 10:30 a.m.	Sponsor Session
12:00 p.m. – 1:00 p.m.	Boxed Lunch
12:30 p.m. – 1:00 p.m.	Variety Plot Meeting
1:00 p.m. – 1:30 p.m.	MCGA Membership Meeting
1:00 p.m. – 2:00 p.m.	Tradeshow Reception
2:00 p.m. – 4:00 p.m.	Linder/RRFN Panels
4:00 p.m. – 6:00 p.m.	MCGA Live Fundraising Auction
6:00 p.m. – 8:30 p.m.	MCGA/MSGA Banquet/Entertainment – Bob Uppgren

# MCGA pre-resolutions set for Dec. 3

The Minnesota Corn Growers Association pre-resolutions session will be held from 8:30 a.m. – 3 p.m. on Thursday, Dec. 3, 2015, at the Country Inn & Suites in Mankato.

All affiliated county organizations are encouraged to submit policy ideas for inclusion in MCGA resolutions for 2016. Final approval of resolutions brought forth during pre-resolutions will take place from 9:30 a.m. – noon on Jan. 28, 2016, at MN Ag EXPO in Mankato. ■



Thanks to our Allied Industry Partners



# Children’s Museum of Southern MN opens to warm reception

The Children’s Museum of Southern Minnesota, located in Mankato, opened its doors May 1 and has seen 45,000 visitors in its first six months of operation. In that time, 2,000 families have purchased memberships.

Minnesota Corn Growers Association was an early donor, giving a major capital gift that included a subsidy so the museum could offer MCGA members a discounted family membership for \$45 (a \$50 savings).

“Twenty five percent of the museum offerings relate to agriculture,” said Executive Director Peter Olson.

“Inside, there are two major ag-related exhibits,” Olson said. “We have the Grow It Gallery, designed for kids age 2-7. We’ve seen 9 year olds enjoy it, but the second graders really go to town here. It’s a hands-on experience where the kids play all the roles, being a grower, bringing products to market, processing the raw produce into finished retail products. There is even a café where they can serve the ‘food’ to their parents. Second, we have AgLab, a stainless steel environment with microscopes, where staff and

volunteers present information about the science of food.”

From the Grow It Gallery, doors lead outside to the recently opened 12,000 square feet of outdoor space: the Farmyard, where kids can see live farm animals and plant, pick and tend real growing vegetables, herbs and greens. A path, lined with sweet corn, leads to the Dotson Back Forty, an area where kids can run and play and listen to stories. The space has edible plants and a working hand-pump for water.

Olson emphasizes the importance of the financial support the museum has received from Minnesota Corn Growers Association and other agricultural groups. About 40 percent comes from donations.



**MCGA made a major capital donation to help get the Southern MN Children’s Museum up and running.**

“The initial capital gift from MCGA was so important. It was a kind of stamp of approval that told other groups that the museum’s approach to agriculture

was going to be dedicated to helping people understand the realities and the challenges of raising their food in the real world, the way it’s done today,” Olson said. ▀

**President**

Noah Hultgren of Raymond  
320-599-5118

**First Vice President**

Harold Wolle Jr. of St. James  
507-375-5905

**Secretary**

Kirby Hettver of DeGraff  
320-226-3677

**Treasurer**

Tim Wiersma of Wells  
507-440-2033

**Past President**

Bruce Peterson of Northfield  
507-645-6717

Les Anderson of Cannon Falls  
507-263-2109

Ryan Buck of Goodhue  
651-764-2164

Charles DeGrote of Clara City  
320-847-2175

Zach Fore of Mentor  
218-280-0926

Tom Haag of Eden Valley  
320-453-7760

Paul Henning of Okabena  
507-370-1688

Jean Knakmuhs of Walnut Grove  
507-532-9250

John Luepke of Courtland  
507-359-2703

Gerald Mulder of Renville  
320-329-3155

Dan Root of Hayfield  
507-951-6657

Brian Thalmann of Plato  
320-238-2481

Dale Tolifson of Benson  
320-843-3758

Tim Waibel of Courtland  
507-359-1219

**MCR&PC Members  
November 2015**

**Chair**

Doug Albin of Clarkfield  
320-383-2338

**Vice Chair**

Chad Willis of Willmar  
320-235-4452

**Secretary**

Jerry Demmer of Clarks Grove  
507-826-3286

**Treasurer**

Myron (Mickey) Peterson of Sacred Heart  
320-765-2676

Patty Geerdes of Racine  
507-251-6976

Dwight Mork of Bellingham  
320-568-2264

Richard Peterson of Mt. Lake  
507-639-6066

Jerry Ploehn of Alpha  
507-847-3986

Gerald Tumbleson of Sherburn  
507-639-6938

Scott Winslow of Fountain  
507-951-0363

Ex-Officio Dave Frederickson  
Minnesota Dept. of Ag  
651-201-6219



## Calendar of Events

**Nov. 18**

MCGA/MCR&PC joint meeting,  
Shakopee

**Nov. 19-20**

MN Association of Townships  
annual conference,  
Alexandria

**Nov. 20**

MN Farm Bureau  
annual conference,  
Bloomington

**Nov. 21-22**

MN Farmers Union convention,  
Minneapolis

**Nov. 26-27**

MCGA office closed for  
Thanksgiving holiday

**Dec. 2**

MN Soybean Growers  
pre-resolutions,  
Mankato

**Dec. 3**

MCGA pre-resolutions,  
Mankato

**Dec. 3-5**

MN State Cattlemen's  
annual convention,  
Hinckley

**Dec. 5**

MN Lamb & Wool  
Producers convention,  
Chaska

**Dec. 6-8**

MN Association of Soil & Water  
Conservation Districts convention,  
Bloomington

**Dec. 15**

Conservation tillage conference,  
Willmar

**Dec. 16**

MCGA/MCR&PC joint meeting,  
Shakopee

**Dec. 24-25**

MCGA offices closed for  
Christmas holiday

**Dec. 31-Jan. 1**

MCGA offices closed for  
New Year's holiday

**Jan. 19-20**

Pork Congress,  
Minneapolis

**Jan. 27-28**

MN Ag EXPO '16,  
Mankato