



# Metrowest Interfaith Hospitality Network

A Community Response to Homelessness

Providing Families Shelter with Warmth, Hospitality and Respect



## Network News

July 18, 2011 Edition of the MIHN Newsletter



Temple Beth Torah, Holliston



Wellesley Village Church



Newton Highlands



Eliot Church of South Natick

### Chair Chat – A Note from our Board Chairperson

Summer Greetings to all of you, MIHN friends-

I hope this newsletter finds you enjoying the beginning of summer and feeling good about your continued collaboration with our Network. This will be my last Chair Chat, but certainly not the last time you will hear from me! My professional life has become very time-consuming, my personal life is very busy, and my “plate” is more than full. After much prayer and contemplation and with more than 8 challenging but fulfilling years chairing our Board of Directors, I have decided to step down. Our Board voted unanimously on Mike Donoghue’s candidacy on June 23, 2011 and he has assumed the role of Chair. I know that, like me, you will find Mike to be a warm, committed and passionate MIHN leader. Please join me in wishing him all the best in this new role.

I will remain on the Board to work with Mike and with Judy Mongiardo on Board development. We continue to seek new Board members with fund raising, marketing and real estate skills. I will also be working on fund-raising with Kevin Connolly. Increasing Board membership and growing our financial contributions are two critical objectives for MIHN at the moment, and I feel that I need to devote my attention to these areas.

I wish all of you a lovely summer season and look forward to continuing to work with you on our shared vision of service to homeless families with children.

Most sincerely- Candace Sutcliffe

**MIHN awarded *Organization of the Year* by the Framingham Rotary Club!**

### Director’s Letter

In my last letter to all of you, I highlighted MIHN’s successes outlined in the Annual Report. One of those successes was the increase of MIHN families moving to independent housing which rose to 38% in 2010. Clearly, we want to do better and continue to seek out ways that we can help increase our families’ chances of achieving their goals.

As we shared with you in our Mother’s Day Appeal, funding interim childcare while the parents navigate the state system and wait to receive their childcare voucher enables our parents to seek and begin work or school sooner. The ability to provide our parents the opportunity to hit the ground running and be productive and successful in the first 30 days is critical. I am pleased to say that through the generosity of our individual donors, the Wellesley Hills Junior Women’s Club, the Framingham Rotary Club and the Natick Rotary Club we have raised \$6,700 for our childcare fund!

These funds have already made a difference; providing 17 month old CJ three weeks of childcare so that his father could continue his path to obtaining his GED and his mother could find employment, sending Gabby and Jon to camp so their mom could begin school, and helping send Kyreese to camp so his mother did not have to lose time at work. It is a win-win for the kids, they are active and engaged having fun at camp and daycare while their parents are able to work towards securing them a home that much sooner.

Our initiatives to do better do not stop there. Transitional housing for our families is a significant next step. Transitional housing will allow our families who are ready to move out of the shelter, but not quite ready for the full responsibilities that come with a home of their own, to have a more independent living situation with continued support services.

I look forward to working with all of you as our mission to serve families who are homeless continues to grow.

With Much Appreciation— Beth

## Network Congregations

### MIHN Day Center

First Baptist Church, Natick

### MIHN Host Congregations

Christ Lutheran Church, Natick

Christ the King Lutheran Church, Holliston

Congregation Or Atid/Peace Lutheran Church, Wayland

Crossroads Community Church, Framingham

The Dover Church

Federated Church of Ashland

First Congregational Church, Natick

First Parish in Framingham

First Parish in Wayland

Fisk United Methodist Church, Natick

Pilgrim Church, Sherborn

St. Paul's Episcopal Church, Natick

Unitarian Universalist Society of Wellesley Hills

Unitarian Universalist Area Church, Sherborn

Wellesley Congregational Church

Wellesley Hills Congregational Church

### MIHN Support Congregations

Charles River Vineyard, South Natick

Christ Church, United Methodist of Wellesley

Eliot Church of South Natick

First Baptist Church, Framingham

First Congregational Church, Holliston

Fisk United Methodist Church, Natick

Holy Spirit Catholic Community, Wellesley

Memorial Congregational Church, Sudbury

Most Precious Blood Church, Dover

Needham Congregational Church

Newton Highlands Congregational Church

Parish of The Good Shepherd, Wayland

St. Andrew's Episcopal Church, Framingham

St. Andrew's Episcopal Church, Wellesley

St. John Lutheran Church, Sudbury

St. Mary's Catholic Church, Holliston

St. Theresa's Catholic Church, Sherborn

Sha'arei Shalom, Ashland

Temple Beth Elohim, Wellesley

Temple Beth Shalom, Needham

Temple Beth Torah, Holliston

Temple Shir Tikvah, Wayland

*\* Fisk United Methodist Church serves as both a support and a host congregation.*

### Our Current Families:

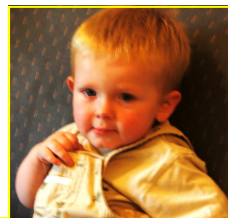


July 14th was moving day for **Cheryl** and her two children! In addition to providing Cheryl's family a place to call home since January, MIHN volunteers also generously donated all the needed items for **Kyreese** to go to camp and all the furnishings for their new apartment—Thank You!



**Jenn, Charles** and their 17 month old son **CJ** entered MIHN in May and have been working very hard ever since. Jenn and Charles have both been working with MIHN volunteer tutors and SMOC tutors to prepare for the GED exam.

We are pleased to say that Jenn recently received her GED and Charles will be taking his exam later this summer.



Just days after receiving her GED, Jenn found full-time work!

**Congratulations Jenn!**

**Miriam** and her two children, **Gabby** 14 and **Jon** 9, found MIHN in June. Gaby and Jonathan are enjoying Camp Woodtrail through the Natick Recreation Department. Miriam is currently attending the Cosmix School of Beauty Sciences to become a Nail Technician with the future goal of re-opening her own Salon.

Miriam has experience as a business owner and in the information technology field and is seeking part-time work while going to school.

### Moving On:

**Natalie and her daughter Jayla** were with MIHN for less than two months before moving into an apartment with friends. Best Wishes to Natalie and Jayla!

After several months with MIHN and with the generous donation of furnishings by MIHN volunteers, **Anna and Giuliana** were able to move into their own apartment June 17th. We wish them much success in their new home!

Save The Date

MIHN returns to the  
Natick Mall  
For Our 3rd Annual  
Walk Away Homelessness Event!

Saturday February 4, 2012

Please join us in welcoming MIHN's newest  
Congregation to the Network,

**Christ Church, United Methodist  
of Wellesley**



# MIHN's 2nd Annual Online Auction

**Accepting donated items through August 27th**  
**Bidding is open September 1st—September 19th**

It's simple: Go to [www.biddingforgood.com/MIHN](http://www.biddingforgood.com/MIHN) and click on **Donate Items**

Here are just a few suggestions:

Theatre Tickets – Sporting Events – Museum Passes – Restaurant Gift Cards  
Tourist Venues (Duck tours, harbor tours) – Day of Golf – Ski Weekend  
Leaf Peeping Weekend – Tanglewood Tickets – Airline Tickets  
Dream Destinations – Art Work



**Click on the link below to view what could be your seats at the Celtics game!**

[http://www.seats3d.com/nba/boston\\_celtics/?pn=p\\_18\\_6](http://www.seats3d.com/nba/boston_celtics/?pn=p_18_6)



**BID on this item and many more at**  
**[www.biddingforgood.org/mihn](http://www.biddingforgood.org/mihn)**

Other items already on the Auction block are:  
Fly-fishing lessons in Sudbury, A Round of Golf for Two at TPC Boston, A year's supply of contact lenses and much more!!

**You could be sitting here for the Red Sox vs Baltimore Orioles Game at Fenway Park on Monday September 19 at 7:05 pm!**

**BID on this item at**  
**[www.biddingforgood.org/mihn](http://www.biddingforgood.org/mihn)**

## MIHN Blackboard

### Upcoming Training Dates:

Thursday July 21st  
Tuesday August 2nd  
Thursday August 18th  
Tuesday September 6th  
Thursday September 15th

\*All volunteer trainings run from 6:30 to 8:30pm. Please check the Wiki site for locations at:  
[mihn.pbwiki.com](http://mihn.pbwiki.com)

### Day Center Volunteers Needed for Weekend Shifts!

Shifts are Saturday & Sunday  
9:30 to 12:30  
and  
12:30 to 3:00

To sign up or for more information  
Please call 508-318-4820 or email  
[Director@metrowestihn.org](mailto:Director@metrowestihn.org)

### Host Rotation Schedule July— October 2011

7/10 First Parish in Wayland  
7/17 First Parish in Wayland  
7/24 Fisk United Methodist Church in Natick  
7/31 Fisk United Methodist Church in Natick  
8/7 First Parish in Framingham  
8/14 Pilgrim Church in Sherborn  
8/21 Crossroads Community Church in Framingham  
8/28 Crossroads Community Church in Framingham  
9/4 Congregation Or Atid/Peace Lutheran in Wayland  
9/11 Federated Church of Ashland  
9/18 First Congregational Church in Natick  
9/25 St. Paul's Episcopal Church in Natick  
10/2 Wellesley Hills Congregational Church  
10/9 UU Society of Wellesley Hills  
10/16 Wellesley Village Church  
10/23 Christ The King Lutheran Church in Holliston  
10/30 The Dover Church

Metrowest Interfaith Hospitality Network  
PO Box 847  
Natick, MA 01760

NONPROFIT ORG  
US POSTAGE PAID  
NATICK, MA  
PERMIT NO. 69



MIHN is on Facebook! Please like our Facebook page at

[www.metrowestihn.org/Facebook.html](http://www.metrowestihn.org/Facebook.html)

Visit us at [www.metrowestihn.org](http://www.metrowestihn.org)



Yes, I want to support  
Homeless Families through the

**Metrowest Interfaith Hospitality Network**

Please make your check payable to:

**MIHN**

P.O. Box 847 Natick, MA 01760

OR

**Donate Online at:**

**WWW.METROWESTIHN.ORG**

Name

Address

City, State

Email: