



# The Queensland Geologist

Newsletter of the Geological Society of Australia Inc. Queensland Division  
Volume 115 #3 – June 2015

## IN THIS ISSUE:

- **Upcoming GSA events**
- **Upcoming conferences and Short Courses**
- **New members of the GSA Queensland Division**
- **AIG-GSAQ Field Trip report**
- **Launch of the Geotourism Brisbane App**
- **Call for further nominations—GSA Queensland Divisional Committee**
- **Regular GSAQ technical talks — call for speakers**
- **Call for nominations —GSAQ Awards**
- **GSAQ Publications**
- **Nomination form for Divisional Committee and Regional Representatives**

## UPCOMING GSA EVENTS:

### GSA Queensland Division Technical Talk

Speaker: Emeritus Professor Ken Collerson  
HDR, 82 Eagle St, Brisbane 4000

**Topic:** An Alkaline Source for Cu, Co, Ni, REE, PGE, Au and U in the Mary Kathleen Belt, Mt Isa Block?  
— see next page for abstract

**Date:** Tuesday 23 June 2015

**Venue:** Theodore Club, 333 Adelaide Street Brisbane, 5:15 pm for 6:00 pm.  
Meet in the bar on the first floor. RSVP not required.  
This event is free - includes complimentary finger food.

---

### GSA Queensland Division Student Awards Night

**Date:** Wednesday 29 July 2015

**Speaker and venue to be arranged**

---

### GSA Specialist Group in Tectonics & Structural Geology Conference

**Riding the Wave:** A conference to showcase current research and ideas in Structural Geology and Tectonics

**Date:** 22-27 November 2015  
Caloundra, Queensland

(See inside for more details)

## An Alkaline Source for Cu, Co, Ni, REE, PGE, Au and U in the Mary Kathleen Belt, Mt Isa Block?

**Abstract:** The widely accepted model for mineralisation in the Mary Kathleen Belt is that it is skarn related. Some believe that the metal-bearing fluids were introduced from the distal ~1740 Ma A-type Burstall Granite<sup>3</sup>. But the age of Cu mineralisation in the Belt, 1524±9 Ma, constrained by U-Pb geochronology of titanite separated from Cu-Fe sulphide-bearing clinopyroxene-rich intervals (Sha et al., 2015)<sup>2</sup>, and the age of the nearby Mary Kathleen (U, Th, and REE) deposit, is ~200 Ma younger than the emplacement age of the Burstall Granite. Furthermore, correlations between Cu with Co, Ni and Cr, as well as elevated PGEs, REEs, U in “pyroxenite” dominated intervals of Mary Kathleen Belt core, suggests that mineralisation may be related to a mafic alkaline event, rather than to A-type granite magmatism. Examination of Blue Caesar and Elaine Dorothy core indicates that the titanite-bearing clinopyroxenites are dykes that intrude composite regional metamorphic fabrics in the calc silicate tectonites of the Corella Formation. Thus the dyking event is post-tectonic and discordant pyroxenites are igneous in origin, rather than metasomatic.

Some of these enigmatic clinopyroxenite dykes contain olivine and phlogopite and are associated with units of glimmerite. Both of these lithologies are similar in appearance and mineralogy to a very rare type of alkaline igneous rock called “*phoscorite*”<sup>4</sup>. These extremely rare differentiates of alkaline magmas have only been reported in ~24 of the > ~527 global carbonatite occurrences<sup>5</sup>. Importantly, virtually all phoscorites are associated with economic mineralization<sup>4-6</sup>. For example, Phalabowra a major copper deposit in South Africa<sup>4</sup> containing 1200 Mt Cu (@ 0.59% Cu) also contains phosphate, vermiculite, phlogopite, magnetite, uranium, nickel, gold, silver, platinum and palladium mineralisation.

This element/mineral association is similar to that recorded in the Mary Kathleen Belt. Thus, the metallogenic evolution of the Mary Kathleen Belt may be related to previously unrecognised, alkaline magmatism at ~1526 Ma. A discrimination plot<sup>7</sup> involving La/Yb versus total REEs supports this interpretation.

<sup>1</sup> Duncan, R.J., Stein, H.J., Evans, K.A., Hitzman, M.W., Nelson, E.P & Kirwin, D.J. (2011). *Economic Geology*, 106, 169-192.

<sup>2</sup> Sha, P., Spandler, C. & Chang, Z. 2015. *Proceedings AusIMM Pacrim Conference, Hong Kong, March 2015*, 445-449.

<sup>3</sup> Oliver N.H.S., Pearson, P.J., Holcombe, R.J. and Ord, A. (1999) *Aust. J. Earth Sci.* 46, 467-484.

<sup>4</sup> Fontana J. (2006) *Platinum Metals Review* 50, 134-142.

<sup>5</sup> Woolley, A.R., Kjarsgaard, B.A. (2008a) *Canadian Mineralogist*, 46, 741-752.

<sup>6</sup> Woolley, A.R., Kjarsgaard, B.A. (2008b) *Geological Survey of Canada. Open File 5796*.

<sup>7</sup> Loubet M, Bernat M, Javoy M, Allegre CJ, (1972) *Earth Planet. Sci. Lett.* 14: 226-232.

## Upcoming Conferences and Short Courses

### Specialist Group in Tectonics and Structural Geology

**Riding the Wave:** A conference to showcase current research and ideas in Structural Geology and Tectonics

22–27 November 2015, Caloundra, Queensland.

**Pre-conference field trip:** 14–21 November 2015

New Caledonia: ophiolite obduction, accretion and high-pressure metamorphism

Field trip convener: Geoffrey Clark

**Post-conference field trip:** 28–29 November 2015

Gympie Block/D'Aguilar Ranges: Oscillating deformation and the birth and death of the final orogeny on onshore Australia — core complex, ophiolitic blueschist, rift systems and terrane accretion.

Field trip convener: Rod Holcombe

#### Key dates:

Expression of interest for field trips: **NOW**

Early Bird registration and submission of approximate titles for oral presentation selection: 30 June 2015

Abstract deadline: 15 September 2015

Link for Third Circular

[http://www.gsa.org.au/pdffdocuments/Divs\\_SGs\\_Newsletters/Specialist%20Groups/SGTSG%20Newsletters/Third\\_Circular.pdf](http://www.gsa.org.au/pdffdocuments/Divs_SGs_Newsletters/Specialist%20Groups/SGTSG%20Newsletters/Third_Circular.pdf)

---

**Costs**

	Member	Non-Member
<b>Before 30 June 2015</b>	Regular \$675	Regular \$725
	Student \$425	Student \$475
<b>After 30 June 2015</b>	Regular \$775	Regular \$825
	Student \$525	Student \$575
Conference dinner		\$100

**Important:**

Early registration is strongly recommended as numbers for fieldtrips and conference dinner are limited.

For queries and expressions of interest contact:

Gideon Rosenbaum, Email: [g.rosenbaum@uq.edu.au](mailto:g.rosenbaum@uq.edu.au) Phone: 07 3346 9798

## Mineral Resources from Exploration Targets

### Critical methods and case studies to maximise your dollar spend

AIG One Day Seminar: Brisbane 21 August 2015

How do you maximise the value of the data you create on your Exploration Target?

What are the critical aspects needed in Mineral Resources?

What are the methods of estimation and why are they important?

Cut through the consultant 'speak' and talk English!

Speakers are drawn from a variety of industry, and consulting organisations to provide information exchange.

## SEG 2015: World-Class Ore Deposits: Discovery to Recovery

Wrest Point Convention Centre, Hobart, TAS, Australia

September 27-30, 2015

The theme of the SEG 2015 Conference is World-Class Ore Deposits: Discovery to Recovery. The Conference will combine the exploration/discovery and deposit geology with geometallurgy for a range of deposit types and major mines/deposits. No previous SEG Conference has included geometallurgy at this level, and we recognize that it is becoming a very important aspect of the economic geosciences. The technical program will focus on those areas of academic research in economic geology that lead to the important practical issues of improved exploration concepts, discovery, mine geology and recovery (geometallurgy).

The Conference will feature Invited Keynote Speakers and Invited Speakers to present "trifecta" talks — these will include three separate and co-ordinated talks on the discovery, geology and geometallurgy of four styles of world-class ore deposits. Key sub-theme sessions drawn from submitted abstracts will cater for a variety of deposit styles and environments. The three days of technical talks will be supplemented by related poster sessions that will have dedicated time in the technical program.

Link to website: <http://www.seg2015.org/>

### Student sponsorship:

**GSAQ has agreed to sponsor up to 4 students to attend the SEG2015 Conference (\$250 will be provided towards travel and accommodation). The requirement is that you must be a member of GSA, and preference will be given to students who are delivering an oral presentation or poster. Please contact Laurie Hutton ([laurie.hutton@dnrm.qld.gov.au](mailto:laurie.hutton@dnrm.qld.gov.au))**

## Upcoming Conferences and Short Courses (continued)

### The Bowen Basin and Beyond

Brisbane 7–9 October, 2015

Presented by the Bowen Basin Geologists' Group and AIG.

The Bowen Basin Symposium is held once every 5 years and has been a resounding success since its inception in 1985. The Symposium attracts up to 550 delegates and aims to foster the exchange of ideas for the solution of common problems and challenges; and to maintain an awareness of new technologies provided through formal presentations and Trade displays.

A [Web site](#) has been established to provide information regarding the conference.

For more information contact [Rod Carlson](#) or the [conference managers](#).

### AESC2016 – Adelaide 26–30 June 2016

The website for AESC in Adelaide (26–30 June 2016) [www.aesc2016.gsa.org.au](http://www.aesc2016.gsa.org.au) is live and a flier is appended to the end of this newsletter. The email address in the flier: [aesc2016@aomevents.com](mailto:aesc2016@aomevents.com) is the official convention email address managed by All Occasions Events and is also live.

## New Members of the Queensland Division

The following members joined the GSA Queensland Division since the start of 2015.

Mr. Rashed Abdullah	Student Member	
Mr. Robert Barnes	Retired Member	Transfer
Mr. David Edwards	Member	
Dr. Patrick Hayman	Member	Transfer
Mr. Edward Howard	Member	
Mr. Daniel Humphries	Member	
Mrs. Kaylie Hyland	Member	
Miss Laura Kaye	Graduate Member	
Mr. Jubo Liu	Member	Transfer
Miss Joanne Price	Member	
Mr. Clinton Rivers	Member	Transfer
Mr. Andrew Short	Member	Transfer
Miss Coralie Siegel	Member	
Mr. Jim Stanley	Student Member	
Dr. Jessica Trofimovs	Member	

In spite of the encouraging number of new members, the membership of Division stands at 288 at June 1 with 56 of members from 2014 currently listed as unfinancial. If you fall into the latter category, please consider renewing your subscription as soon as possible. GSA members of five years or more who have been retrenched in the downturn will be eligible for membership assistance in 2015. Membership fees for unemployed members receiving AJES (online or hardcopy) are reduced to \$25.00 for 2015 and will be waived for unemployed members not receiving AJES. Contact Annika Nystrom for more information [membership@gsa.org.au](mailto:membership@gsa.org.au).

## AIG–GSAQ Field Trip Report

A joint AIG–GSAQ field trip to the southern New England Orogen in Queensland and northern New South Wales was conducted over the Queen's Birthday long weekend (6–8 June 2015).

The field trip was a resounding success, thanks to the efforts of Doug Young, ably assisted by Rod Carlson and other members of AIG and the various leaders of sections of the trip, in particular Adrian Day, Davina Halloran, Martin I'Ons and Julius Marinelli. The trip had 33 attendees, including 20 members of either AIG or GSA and 6 students.

The trip began with a visit to the Mount Sylvia Diatomite mine near Gatton that produces diatomite for use as an absorbent and in animal foods and non-organic insecticide. Palagonite, a by-product of the quarrying of the fresh basalt

overburden for road-building, is finding increasing use as a soil conditioner. From there we travelled via Warwick, where local sandstone has been used extensively in the city's buildings, to the Stanthorpe area where Adrian Day conducted us on a visit to the Crystal Mountain breccia pipe system. Dinner on Saturday night was at Ravens Croft Winery outside Stanthorpe and included wine tasting and a barbecue.

On Sunday, Davina Halloran and Adrian Day shared leadership as we travelled west to the Pikedale–Texas area, where we examined outcrops of the Carboniferous Texas beds and in-faulted Permian successions that host gold–silver mineralisation such as at the Warroo mine, worked by Valdora Minerals Ltd in the 1980s. In the afternoon we visited the small Hornet copper mine and the nearby Silver Spur mine that was a notable producer of silver, gold, lead and copper, principally between 1892 and 1926. We stayed overnight in Tenterfield.

On Monday, the highlight was a visit to the Mount Carrington Project, the cornerstone asset of White Rock Minerals in the Drake area. Here we were given a presentation by Liam Fromhyr on the project and shown the epithermal gold–silver mineralisation and host rocks in the former Strauss open cut. The mineralisation is hosted by the Permian Drake Volcanics, which are now known to occupy a large caldera structure, and the range of rock types and mineralisation was well illustrated by the drill core that Liam had laid out for us. A quick visit to Undercliffe Falls and the spectacular porphyritic granite that bears its name concluded the trip

As a prelude to the Field Conference, the Queensland Branch of the AIG conducted a one day seminar *New England Orogen, Regional and Economic Geology – an update* on Friday 5 June 2015 to showcase recent advances in the understanding of the New England Orogen.



Diatomite layer underlying Tertiary basalt at the Mount Sylvia diatomite mine



Strauss open cut at Mount Carrington gold–silver project, Drake area



Adrian Day explaining the geology of the breccia pipes at Crystal Mountain north-west of Stanthorpe



Group photograph, 2015 AIG–GSA Field Trip at Mount Carrington

## Launch of the Geotourism Brisbane App

Although the Geotourism Brisbane App (see page 9 for details) was released in November, we had not been able to organise an official launch. On Tuesday 26 May at 7:30am the Division held a medial launch at City Hall, King George Square. The CEO of Queensland Museum, Professor Suzanne Miller was invited to launch the App as patron and to speak on its relevance to the general public.

The launch was followed by a public lecture evening at the Auditorium at Queensland Museum at 6pm on Thursday 28 May. The evening included three presentations — by Friedrich von Gnielinski on the concept and history of the app's development, John Siemon on some historical aspects of building materials in early Brisbane, and Ken Moule of Global GBM on the technical aspects of the app. The evening was attended by about 45 people, at least a third of whom were from outside the geological community.

Thanks go to Laurie Hutton and Fred von Gnielinski for organising the media launch and the public lecture to promote the app.



L–R John Siemon, Friedrich von Gnielinski, Suzanne Miller, Laurie Hutton and Ken Moule at the launch of the Geotourism Brisbane App at City Hall

## Call for Further Nominations — GSA Queensland Division Committee, 2015-16

At the recent AGM of the Queensland Division, no nomination was received for Chair of the Division, and the elected Honorary Secretary has since resigned from the committee due to changing work commitments. Therefore new nominations are called for these two positions. Should any current GSA member wish to nominate for one of these position on the Executive Committee of the Queensland Division, please complete the accompanying nomination form and mail, fax or scan and email to Mark Thornton, Vice-Chair GSAQ, C/- Geological Survey of Queensland, Level 12/ 61 Mary Street, Brisbane QLD 4000. Ph. (07) 30355254, Fax (07) 32113920

Role descriptions and a nomination form for key committee positions are provided as Appendices at the end of this newsletter.

In addition to filling the executive positions, we are keen to expand the committee, and are particularly **seeking nominations from the universities**. The Divisional committee now has no representatives at all from academia, in spite of the GSA often describing itself as a 'learned society'. This is a challenging time for the GSA as it struggles to keep itself relevant to the existing membership and attract new members, and not having representation from such an important part of the profession is a serious deficiency.

The committee has also conducted its first meeting by teleconference, so that members are welcome to nominate as regional representatives and will be able to participate in meetings rather than simply through email.

Note: With regard to the AGM, it was of concern to some attendees that no minutes of the 2014 AGM were available to be tabled. Because the secretary had resigned some months before, recording of the minutes appears to have been overlooked. However, the 2014 AGM was videotaped and if anyone does want to see a record of that meeting, please contact Friedrich von Gnielinski for a copy.

## GSA Queensland Technical Talks for 2015 — call for speakers

As indicated in the last newsletter, the GSAQ Committee would like to establish GSAQ technical talks on a more regular basis and is seeking offers from potential presenters. Note that this is not limited to Brisbane, and if anyone wishes to present a talk at Townsville or any other regional centre, please contact the committee who will be pleased to publicise it.

A suggested recurring theme is Queensland geology – particularly aspects of regional geology that might be of interest to those who are newcomers to the state. However, if the Universities know of visiting lecturers or researchers, please let us know as they would also be most welcome whatever their area of expertise. The following is a suggested schedule.

- Fourth Wednesday of each month (i.e. alternative fortnight to AIG technical talks).
- Venue probably the ‘Theodore Club’ – pending speakers and availability of venue.

<b>Event</b>	<b>June</b>	<b>July</b>	<b>August</b>	<b>September</b>	<b>October</b>	<b>November</b>	<b>December</b>
<b>GSAQ Newsletter</b>	WEEK OF 16 Jun	NA	WEEK OF 11 Aug	NA	WEEK OF 13 Oct	NA	WEEK OF 15 Dec
<b>GSAQ Technical Talks</b>	Tuesday 23 Jun	Wednesda y 29 Jul	Wednesday 26 Aug	Wednesday 23 Sep	Wednesday 28 Oct	Wednesday 25 Nov	Industry Christmas Party

## Call for Nominations, GSAQ Awards

### Student Awards

The Queensland Division of the GSA presents a number of awards annually to students.

University Earth Science departments and schools may nominate high achieving students for medals, with presentation at an upcoming awards night in July.

### GSAQ Medals

Nominations are also called for the award of the following:

#### Dorothy Hill Medal

*Dorothy Hill Medal for Queensland Geology is awarded to a person distinguished for their contributions to the advance of geological knowledge in the State of Queensland.*

#### Neville Stevens Medal

*The Division may annually award a medal known as the N.C. Stevens Medal to a person distinguished for contributions to the geological community and the promotion of public awareness of Earth Sciences in Queensland.*

#### Campbell Miles Medal (presented in conjunction with the AIG).

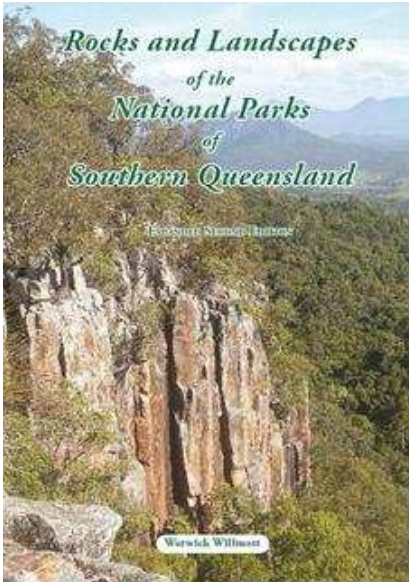
*The John Campbell Miles Medal is presented to a person distinguished for their contributions to the advancement of economic geology, mineral systems, exploration technology or the discovery of a significant mineral or energy resource within Queensland.*

A written justification that will form the basis for a citation must accompany each nomination and should be forwarded to our secretary. Nominations for the Dorothy Hill Medal should preferably include a comprehensive list of publications by the nominee. Nominations will remain current for a period of five years.

Detailed guidelines for the medals can be found at: <http://www.qld.gsa.org.au/guide.htm>

## Recent GSAQ Publications

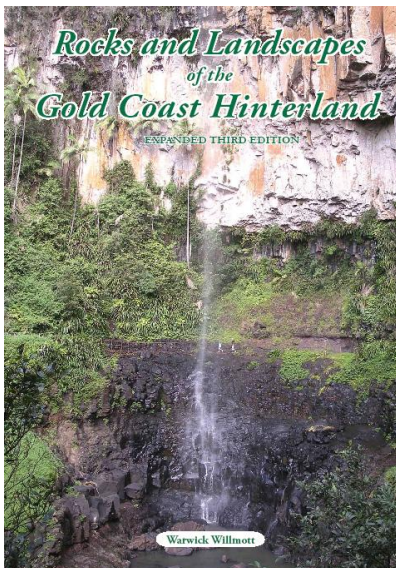
***Rocks and Landscapes of the National Parks of Southern Queensland (Second Edition)*** by Warwick Willmott



The GSA Queensland Division has released an expanded second edition of *Rocks and Landscapes of the National Parks of Southern Queensland*.

Landscapes and scenery are not accidental — they are closely related to ancient geological events. This book fills a gap in natural history publications by explaining how the national park scenery we see today gradually developed over many millions of years. It groups parks with a similar geological history, explains their common origins, and then gives details on the rocks and landscapes of each. It covers all the national parks and some other reserves from the NSW border to Bundaberg and inland to the Bunya Mountains. There is also a simple up-to-date summary of the geological history of southeast Queensland which is not readily available elsewhere.

***Rocks and Landscapes of the Gold Coast Hinterland (third edition)*** by Warwick Willmott



The GSA Queensland Division has released a brand new version of its booklet '*Rocks and Landscapes of the Gold Coast Hinterland*' which has been popular with a range of people for 24 years, but has been out of print for some time.

This new third edition is in full colour and is considerably expanded (88pp), with a chapter on Acid Sulfate Soils, more on the Tertiary volcanoes, landslide problems, and additional excursion descriptions. We hope it will be useful for a new generation of geologists, students, engineers, and tourists.

The price is still an unbelievable \$11 plus \$3 postage. You can send your orders to Warwick Willmott, at (07) 3379 6485, [willmott@powerup.com.au](mailto:willmott@powerup.com.au), or GSA Divisional Booksales, C/- W Willmott 179 Victoria Ave, Chelmer QLD 4068.



## Geotourism Brisbane—Brisbane History in Stone and Brick—Mobile App

The Queensland Division, in conjunction with Global GBM has built a mobile app for a self-guided walking tour of the Brisbane CBD, highlighting a selection of significant buildings. It presents a GPS linked map with hot-links to a brief history of the each building, its architecture and details of the building stones used, along with both recent and historical photographs. The app is an extension of a walking tour produced by the Queensland Division in conjunction with the Geological Survey of Queensland for the International Geological Congress in 2012.

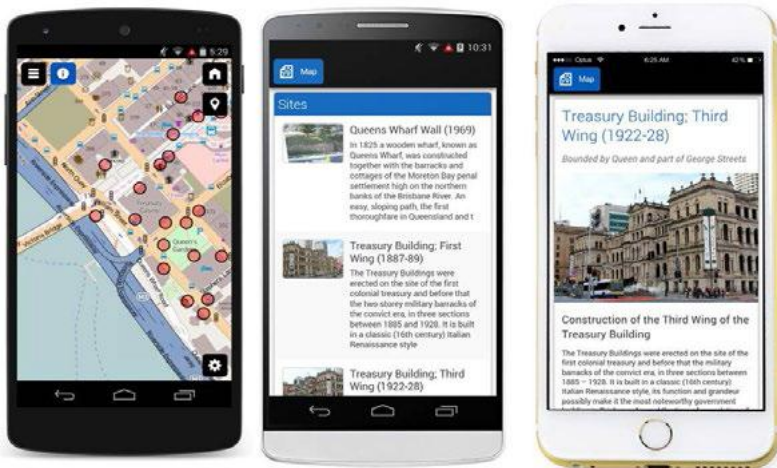
The mobile app, configured through Global GBM Enterprise Mobility Solutions using data compiled by Friedrich von Gnielinski and John Siemon, will open Brisbane up to the growing market for Geotourism and is also an important resource for teachers, tour operators and anyone interested in the built environment of Queensland's capital. The Division sees it as important outreach tool in promoting an understanding and importance of Earth science in the public. It was released in mid-November.

This App may be the forerunner of others that could take information from the Rocks and Landscapes series.

The Brisbane History in Stone and Brick App can be downloaded from the Google App Store and Apple App Store. If you have trouble finding it, search for "Geotourism Brisbane".

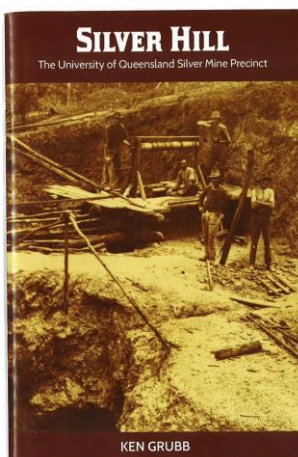
For additional information go to [http://www.qld.gsa.org.au/BBS\\_App.htm](http://www.qld.gsa.org.au/BBS_App.htm)

A Facebook page has been developed to help promote the app to a wider audience. Hit Like to follow the app and be notified of any updates. It is planned to periodically publish information on this page for sites not currently in the app. Go to <https://www.facebook.com/pages/Geotourism-Brisbane/876509425732591>



## Indooroopilly Mine Historical Booklet

*Silver Hill – The University of Queensland Silver Mine Precinct* by Ken Grubb



A booklet about the history of the UQ Experimental Mine, '*Silver Hill — The University of Queensland Silver Mine Precinct*' has been written by Ken Grubb

The booklet was first published in October 2013 and reprinted with minor changes in March 2014. It is about the silver mine, subsequently University Experimental mine and the Julius Kruttschnitt Mineral Research Centre (JKMRC) located at Finney's Hill in the Brisbane suburb of Indooroopilly. The precinct is owned by The University of Queensland.

Copies of this booklet can be purchased at the JKMRC reception for \$10 (cash point sales), Tel. (07) 3365 5888.

## Queensland Division Committee 2014-2015

<i>Position</i>	<i>Phone</i>	<i>Fax</i>	<i>E-mail</i>
<b>Chair</b> Vacant			
<b>Vice-Chair</b> Mr Mark Thornton	3035 5254	3211 3920	mark.thornton@dnrm.qld.gov.au
<b>Honorary Secretary</b> Vacant			
<b>Webmaster</b> Dr Paul Blake	3035 5211	3211 3920	paul.blake@dnrm.qld.gov.au
<b>Treasurer, Video Library, &amp; EKKA Subcommittee chair</b> Mr Friedrich von Gnielinski	3035 5222	3211 3920	vongnielinski@optusnet.com.au
<b>Membership Secretary</b> Dr Aldo Van Heeswijck	32856190		eurydesma@bigpond.com
<b>Education Subcommittee &amp; Awards Convenor</b> Dr Laurie Hutton	3035 3212	3211 3920	laurie.hutton@dnrm.qld.gov.au
<b>Newsletter Editor</b> Mr Ian Withnall	33005951		iwwithnall@optusnet.com.au
<b>GSA Publications</b> Mr Warwick Willmott	3379 6485		willmott@powerup.com.au
<b>Central Queensland Regional Representative</b> Mr Andrew Williams	4952 5255	4952 5455	andy.williams@cardno.com.au
<b>Committee Members</b> Mr Doug Young (AIG Rep.) Mr Mark Berry (AIG Rep.) Mr Ralph Mclver Mr Tony Shellshear Dr Balaji Bholse Mr David Trezise	3236 4188 3230 9028 0419 713 136 3800 1565		d.young@findex.net.au mberry@amccconsultants.com.au rmciver@iimetro.com.au tony@sdcc.net.au balaji.geol@gmail.com trezised@optusnet.com.au

### THE INTERNATIONALLY RENOWNED



### INFORMAL WEEKLY GET-TOGETHER FOR EXPLORERS, MINERS, & OTHER GEOSCIENTISTS

O'Malleys Irish Pub –

Basement Level of the Wintergarden in the Queen Street Mall, Brisbane CBD

5.30pm on every Wednesday evening if your work/spouse/budget/health allows!

**APPENDIX.** GSA Committee role descriptions and nomination form.



**Geological Society of Australia Inc, Queensland Division**

**NOMINATION FORM  
EXECUTIVE COMMITTEE AND REGIONAL REPRESENTATIVES**

Nominations for Executive Committee for 2015/2016 are now being accepted.

I, .....(full name)  
agree to accept nomination for the position of (please circle one):

**Executive Committee**

- Chair
- Honorary Secretary
- Committee Member (no limit to numbers)

**Regional Representatives**

- Northern Queensland
- Northwestern Queensland

Nominated by: .....

Seconded by: .....

Signed: ..... Date:

Please **mail, fax or scan and email** your nominations today.

**Mark Thornton**  
**Vice-Chair**  
**C/- Geological Survey of Queensland**  
**Level 12/ 61 Mary Street**  
**Brisbane QLD 4000**  
**Ph. (07) 30355254**  
**Fax (07) 32113920**

Further expressions of interest or scanned copies of the completed form can be sent via email to:  
[mark.thornton@dnrm.qld.gov.au](mailto:mark.thornton@dnrm.qld.gov.au)

**Note that you must be a financial member of the Geological Society of Australia to serve on the Committee**

**Division Chair  
Responsibilities**

- (a) Provide leadership within the Division in addressing and promoting the Objects of GSA as set out in the Rules and also in the implementation of specific objectives, strategies and policies recommended by the Governing Council.
- (b) Ensure that the Divisional Committee has sufficient members and office bearers to be an effective advocate of GSA objectives, and to effectively manage and utilise the funds held on behalf of GSA.
- (c) Ensure that the Divisional Committee arranges a suitable program of meetings for members.
- (d) Chair general meetings, introduce the guest speaker and coordinate questions.
- (e) Chair meetings of the Committee.
- (f) If elected, the Deputy Chair is required to carry out the duties of the Chair in periods of his/her absence.

**Division Secretary  
Responsibilities**

- (a) Maintain liaison between the Divisional Committee, CEO, Executive Committee and Governing Council as required.
- (b) Ensure the Division is utilising the current membership list as supplied by the Central Business office.
- (c) Arrange for membership applications to be processed by the Divisional Committee and sent promptly to the CEO, with initial subscription if received.
- (d) Convene Annual General and Ordinary meetings of the Division and Divisional Committee and record minutes.
- (e) Notify the CEO of the death, resignation or change of address of any member of the Division;
- (f) If requested, notify members of important Executive and Council decisions, proposed Society changes, activities and events in the Divisional newsletters.
- (g) Ensure preparation of the annual report of the Division by the Chair and Treasurer for submission to CEO within three months of the end of the preceding calendar year (by 31 March) for inclusion in the Annual General Meeting papers, and that convenors of Divisional sub-committees send their reports to Standing Committee Conveners for inclusion in their annual reports for discussion
- (h) Supply to Secretary and CEO within four weeks of such meetings, copies of the minutes of Annual General, Ordinary, or Special Meeting of the Division. Note: Minutes of Divisional Committee Meetings are not required.
- (i) Notify the Secretary, and CEO of the name, address, and contact details of the incoming Chairman, Secretary and Treasurer when the Divisional Committee changes.
- (j) Notify the CEO of all new Divisional publications and comply with the requirements of the Procedural Guide for Publications.
- (k) Advise the Secretary and Awards Chair of any applications for Fellows of the Society which have been endorsed and recommended by the Divisional Committee. Applicants must have provided significant service to the Society in an Executive function (refer to the relevant guidelines).
- (l) Receive mail on behalf of the Division, forwarding mail items to the appropriate committee member(s).

**Reference:** GSA Procedure Guide <http://gsa.org.au/pdfdocuments/management/GSA%20Procedure%20Guide%20-%20Final-%2015%20July%202013.pdf> , Accessed 04apr15



Uncover Earth's Past to  
Discover Our Future

26 - 30 June 2016 – Adelaide Convention Centre

[aesc2016.gsa.org.au](http://aesc2016.gsa.org.au)

## Call for AESC theme and session suggestions

An exciting series of themes, symposia, fieldtrips and workshops is being put together by the AESC 2016 Organising Committee.



Proudly  
brought  
to you  
by...



A preliminary taste of what is to come and who to contact if you want to make suggestions is outlined below.

- Earth's Environment** – Past to Present
- Tectonics of the Earth and Other Planets** – Craton and Continental Formation and Evolution, Ocean Plate Tectonics, Plate Margin and Plate Interior Tectonism
- Deep Earth Geodynamics** – Core, Asthenosphere and Lithosphere Dynamics, Coupling the Dynamic Deep Earth with Surface Tectonics
- Mineral Endowment** – Formation and Exploration of Mineral Deposits, their Tectonic and Geochemical Environment and Significance
- Geoscience for Society** – Geotourism, Education, Integration and Translation of Earth Sciences for Societal Benefit, Open the Gate, Geoscience and Community Engagement
- The Earth Science of Energy** – From Hydrocarbons to Hot Rocks

### Committee

#### GENERAL ENQUIRIES:

Caroline Forbes  
[caroline.forbes@adelaide.edu.au](mailto:caroline.forbes@adelaide.edu.au)

#### PROGRAM ENQUIRIES:

Alan Collins  
[alan.collins@adelaide.edu.au](mailto:alan.collins@adelaide.edu.au)

#### FIELD TRIPS AND WORKSHOPS:

Steve Hill  
[Steve.Hill@sa.gov.au](mailto:Steve.Hill@sa.gov.au)

#### PARTNERSHIPS (CORPORATE):

Anna Petts  
[anna\\_petts@yahoo.com.au](mailto:anna_petts@yahoo.com.au)

#### PARTNERSHIPS (GOVERNMENT):

Tom Raimondo  
[Tom.Raimondo@unisa.edu.au](mailto:Tom.Raimondo@unisa.edu.au)

#### SYMPOSIA:

Rosalind King  
[rosalind.king@adelaide.edu.au](mailto:rosalind.king@adelaide.edu.au)

#### MARKETING OR FINANCIAL:

Sue Fletcher  
[sue@gsa.org.au](mailto:sue@gsa.org.au)

#### OUTREACH:

Ben McHenry  
[Ben.McHenry@samuseum.sa.gov.au](mailto:Ben.McHenry@samuseum.sa.gov.au)

#### POSTER ENQUIRIES:

Claire Wade  
[clairewade@adam.com.au](mailto:clairewade@adam.com.au)

PHOTO: Pleistocene sediments of the Hindmarsh Clay (red) and unconformably overlying Eridgewater Formation (white) in cliff exposures at Balgowan, Yorke Peninsula, South Australia. Photo courtesy of Caroline Forbes

[www.aesc2016.gsa.org.au](http://www.aesc2016.gsa.org.au)

T +61 8 8125 2200  
F +61 8 8125 2233

E [aesc2016@aomevents.com](mailto:aesc2016@aomevents.com)

© 2016 Geological Society of Australia Inc.