

URGENT - IMPORTANT INFORMATION

This bulletin is being reissued to provide corrected information regarding the serial number cut-ins for the **Charging Corona Soilage Kit #2** (p/n 26NA-K020FOC) and to announce that the Model 7035 EPROM has been upgraded to level 17.0.

The initial release of the bulletin contained serial numbers that were already modified during production. As a result, some dealers may have ordered more of the kit than they actually require.

To prevent unnecessary installation of kits that have already arrived at your location, refer to the revised serial number table in this bulletin to re-verify the correct number of modification kits required for your field base.

Please return any excess kits to Konica Business Technologies via UPS Ground and ship Freight Collect charging Account Number 4R50A7. The return shipping location is:

**Konica Business Technologies Parts Center
Attention: Mod Kit returns
5701 Skylab Road
Huntington Beach, CA 92647**

We apologize for any confusion that this may have caused. Thank you for your support and cooperation.

PRODUCT: **7020/7025/7030/7035**

NO.: **9A**

DATE: **12/11/01**

Supersedes bulletin #9, dated 11/16/01.

SUBJECT: **MODIFICATION KITS**

The bulletin is being reissued to correct information regarding the serial number cut-ins for the charging corona soilage kit #2. Please refer to the serial number tables in this bulletin. The image EPROM level for the model 7035 has also been upgraded to level 17.0.

Modification kits are available to enhance the operation of models 7020, 7025, 7030, and 7035. These kits provide the following corrections:

- Elimination of toner packing in recycle unit.
- Reduction of toner misting.
- Prevention of ADU claw breakage.

Serial number information and modification kit contents are provided in this bulletin. Please note that machines must have the following EPROM levels installed before the modification kits are installed.

Model	System control EPROM	Image control EPROM (type 1 & type 2)
7020	Level 32.0	Level 31.0
7025	Level 32.0	Level 31.0
7030	Level 32.0	Level 31.0
7035	Level 32.0	Level 17.0

PARTS

Through **May 1, 2002**, these kits can be obtained from the Parts Distribution Center *free of charge* for **100%** of the machines within the affected serial number range using the special KoniNet ordering procedures provided in this bulletin. For your convenience and to enable rapid implementation of these modifications, this program will be administered via our KoniNet spare parts order entry system.

<u>DESCRIPTION</u>	<u>PART NO.</u>	<u>DEALER UNIT COST*</u>
Charging corona soilage kit #1	26NA-K010FOC	N/C
Charging corona soilage kit #2	26NA-K020FOC	N/C
ADU claw damage kit	26NA-K030FOC	N/C
Toner packing kit	26NA-K040FOC	N/C

* Prices are subject to change without notice.

SPECIAL ORDERING PROCEDURE

Use the Order Planning Table provided below to determine the number of kits necessary for the affected Models 7020, 7025, 7030 and 7035. Compare your serial numbers to the "Affected Serial Number Range" shown in the table to establish the total number of your machines that will require the upgrade. Enter this value in the "Total Affected MIF" column.

Previously, some kits have been shipped to field sites identified through contact with the Technical Support Hotline. If you had already received a quantity of these kits from these special shipments, simply record the number in the "Less # Kits Already Received" column and subtract this amount from your "Total Affected MIF" figure to establish the final "# of Kits Required" quantity.

Note: The number of kits ordered will be compared to our records of your shipped units and you will be contacted if significant discrepancies are noted. Please retain your worksheet and backup records should reconciliation be necessary.

Company: _____

Preparer: _____

Part Number	Model	Affected Serial Number Range	Total Affected MIF	Less # of Kits Already Received	# of Kits Required
26NA-K010FOC Charge corona kit #1	7020	26NE00001- 26NE07234			
"	7030	26PE00001- 26PE00457			
26NA-K020FOC Charge corona kit #2	7020	26NE07235- 26NE11635			
"	7030	26PE00458- 26PE05823			
26NA-K030FOC ADU claw kit	7020	26NE00001- 26NE22066			
"	7025	26SE00001- 26SE03220			
"	7030	26PE00001- 26PE11668			
"	7035	26TE00001- 26TE03100			
26NA-K040FOC Toner packing kit	7020	26NE00001- 26NE22066			
"	7025	26SE00001- 26SE03220			
"	7030	26PE00001- 26PE11668			

Note: For models 7020 and 7030, the serial number range also includes machines with a 26QE- prefix for the 7020 and a 26RE- prefix for the 7030.

Next, simply proceed to KoniNet to process your order as if it were a normal spare parts order. Sign on and select Applications, then Line Order Entry. Ensuring that you have selected your Parts contract, apply your PO control number and proceed to enter the appropriate number of modification kits by individual part number.

You may select either Routine or Emergency Order and any shipping service level based on the urgency of your individual needs. While there is no charge for the kits, all applicable charges for shipping and Emergency Order service fees will apply.

You may enter more than one order and ship to different destinations as long as the total quantity ordered does not exceed the number of affected machines that you are supporting and eligible to receive.

Orders will be processed on a first-in, first-out basis and shipped promptly to the requested destinations.

MODIFICATION KITS

Serial number ranges are listed below and kit contents are listed on the following pages.

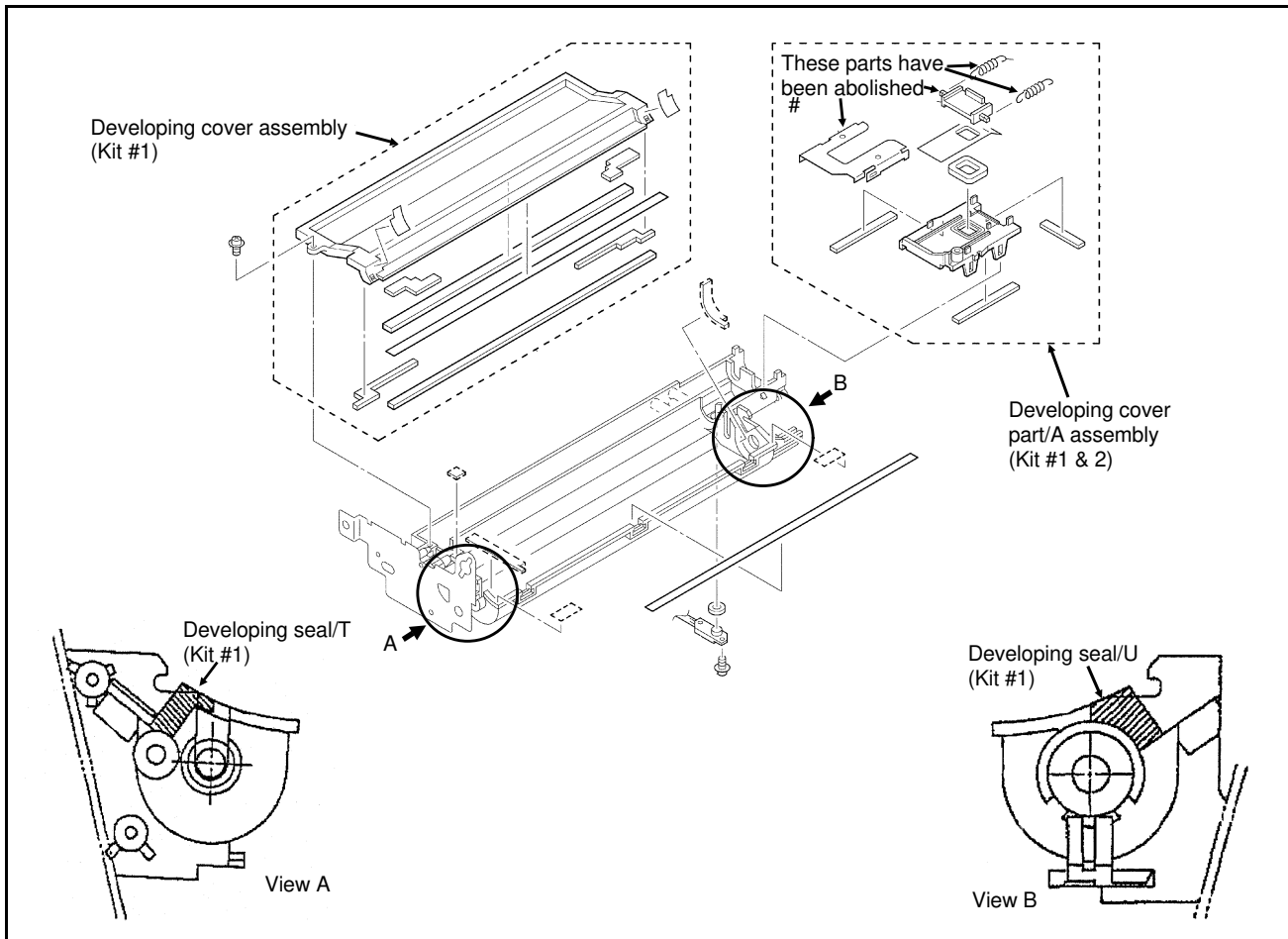
Serial Number Range Table

Kit #	Model	Serial Number Range
26NA-K010FOC Charge corona kit #1	7020	26NE00001 to 26NE07234
	7025	All machines are modified.
	7030	26PE00001 to 26PE00457
26NA-K020FOC Charge corona kit #2	7020	26NE07235 to 26NE11635
	7025	All machines are modified.
	7030	26PE00458 to 26PE05823
26NA-K030FOC ADU claw kit	7020	26NE00001 to 26NE22066
	7025	26SE00001 to 26SE03220
	7030	26PE00001 to 26PE11668
	7035	26TE00001 to 26TE03100
26NA-K040FOC Toner packing kit	7020	26NE00001 to 26NE22066
	7025	26SE00001 to 26SE03220
	7030	26PE00001 to 26PE11668

Note: For models 7020 and 7030, the serial number range also includes machines with a 26QE- prefix for the 7020 and a 26RE- prefix for the 7030.

Charging Corona Soilage Countermeasure Kits 1 and 2: Models 7020 and 7030

This provides a countermeasure against the soiling of the charging corona that results from toner spilling inside the machine. There are two kits because some of the modification parts have already been installed in some machines (refer to serial number range table).



These parts were abolished on machines after the serial number range listed in the table. The abolishment of these parts has nothing to do with the machine's operations. The size of the opening in the cover was changed; this is the modification.

Note: The 2 screws that attach the developing cover assembly (p/n 26NA-6062) to the developing unit are no longer needed. The 2 plastic hooks are all that is needed to secure the developing cover assembly to the developing unit.

Kit #1

26NA-K010FOC

Description	Part Number	Quantity
Developing cover assembly	26NA-3062	1
Developing seal T	26NA30980	1
Developing cover part/A assembly	26NA-3050	1
Developing seal U	26NA30990	1

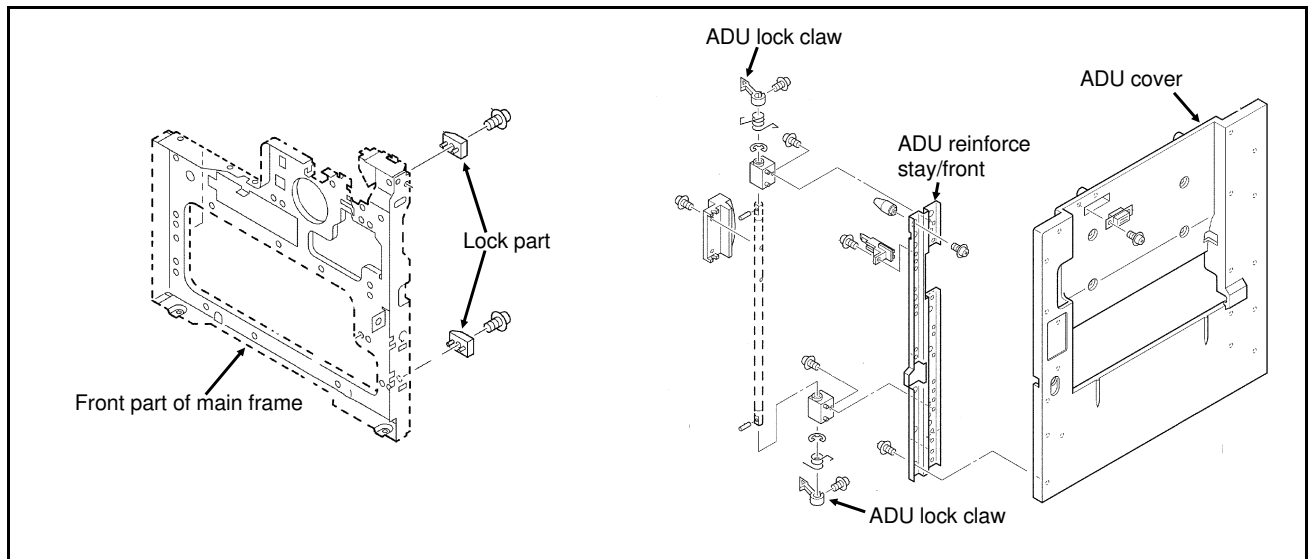
Kit #2

26NA-K020FOC

Description	Part Number	Quantity
Developing cover part A/assembly	26NA-3050	1

ADU Claw Damage Countermeasure Kit: Models 7020, 7025, 7030, and 7035

This provides a countermeasure against ADU lock claw breakage on the right door.



26NA-K030FOC

Description	Part Number	Quantity
ADU lock claw	26NA50963	2
Lock part	26NA10181	2

Toner Packing Countermeasure Kit: Models 7020, 7025, and 7030

This provides a counter measure against noise and damage in the toner recycle unit which results from toner packing. Installation instructions are included with this bulletin.

26NA-K040FOC

Description	Part Number	Quantity
Screw guide part/rear assembly	26TA-2050	1
Collect cover/C assembly	26TA-2270	1
Agitating plate/A	26TA21510	1
Toner conveyance gear/1	26TA21460	1
Spewing PV sheet/B	26TA21610	1

SCAN GLASS CLEANING

In addition to the previously mentioned modification kits, Konica highly recommends that you clean the scan glass and platen glass with a few drops of **Rain-X®**. This will prevent the scan glass from getting dirty and thus producing lines on copies. This procedure should be performed at every service call.

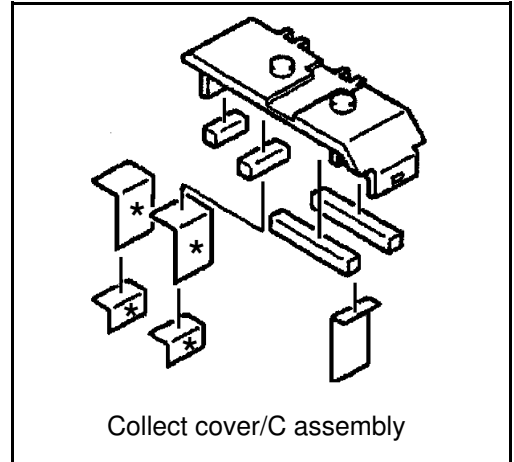
242-15

Corporate Publishing Services

TONER PACKING COUNTERMEASURE INSTALLATION

Preliminary Installation Instructions

Before installing the **Toner Packing Countermeasure Kit**, remove the 4 starred (*) items (shown in the illustration) from the collect cover/C assembly.



Toner Packing Countermeasure Kit Installation

1. Parts to be used

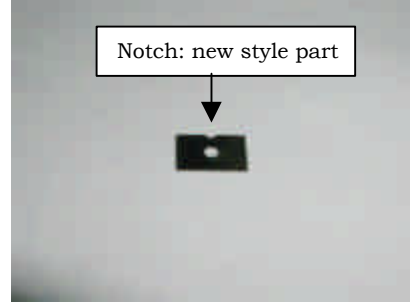
Screw guide/rear assy



Collection cover/C assy



Agitator plate/A



Toner conveyance gear/1



Spewing PV sheet/B



E-ring & screw



2. Procedure

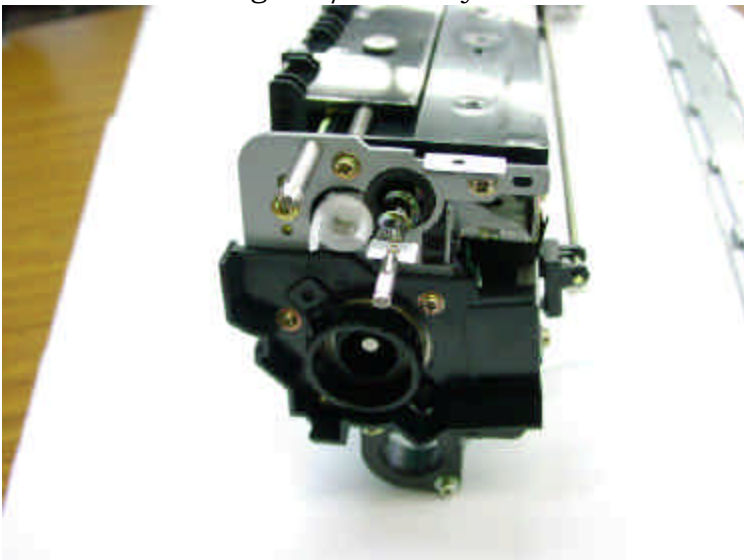
1. Remove cartridge rail.



2. Remove pulley, belt, and shaft holder.



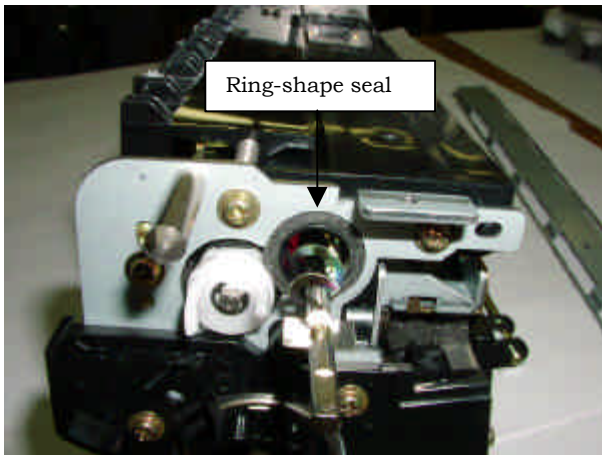
3. Remove screw guide/rear assy



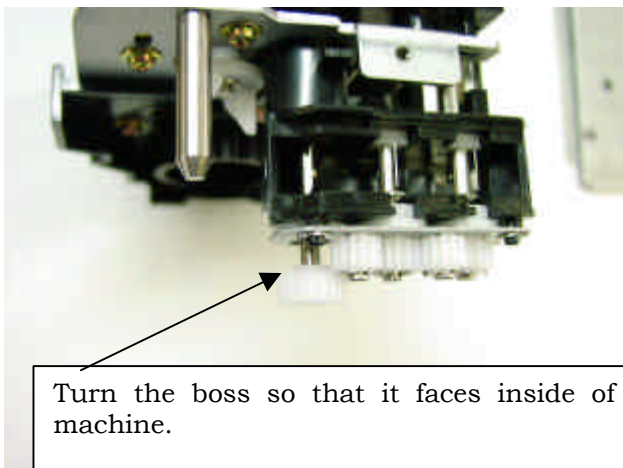
4. Remove agitator plate.



6. Ensure that seal is attached.



8. Install new gear



* Ensure that all 3 agitator plates are vertical.

5. Install new agitator plate



Install the plate as shown in the photo so that it is vertical to the shaft. Use flat-headed screw (M2 X 2).

7. Install new screw guide/rear assy



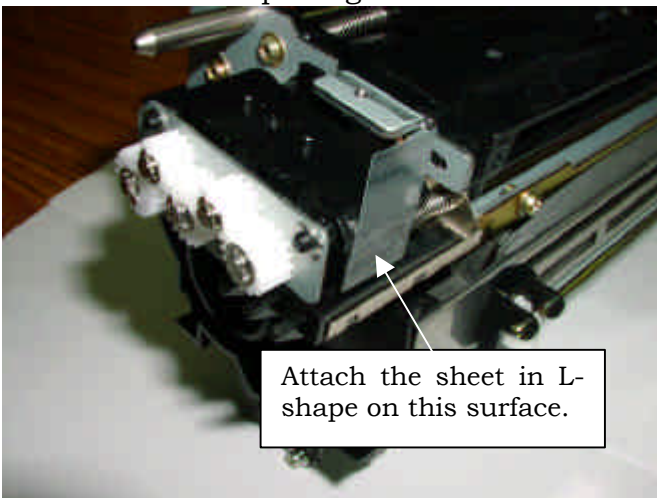
9. Secure gear with E-ring.



10. Adjust the phases of agitator plates and PET and then install the collection cover assy.
* Install the PET towards agitator plates so that the PET will appear on the right side of the photo.



11. Attach toner spewing PV sheet.



Ensure that the sheet is attached securely.

12. Install cartridge rail.

