



Complete Back Office Software Solution for Alternative Investment Industry.

... for Hedge Funds, Fund of Funds, Private Equity Funds,
Mortgage Funds, Family Offices, Fund Administrators

- ❖ Integrated General Ledger, Partnership & Portfolio Accounting
- ❖ Fund and Client Reporting & Analysis. IRS forms K-1s and 1065
- ❖ Web Reporting & Communication with Clients



Integrated General Ledger, Partnership, Portfolio Accounting
and IRS K-1s & 1065 Tax preparation module



Your Fund's Online Reports

Manage all your fund accounting, reporting, tax preparation and client relationship tasks with one powerful solution comprising of two integrated products – FC Office and FC Web.

You can rely on FundCount stable software, tested for years on hundreds of investment partnerships. Our solution is an integrated user-friendly environment consisting of a general ledger, portfolio & partnership accounting and web reporting system with powerful, comprehensive functionality.

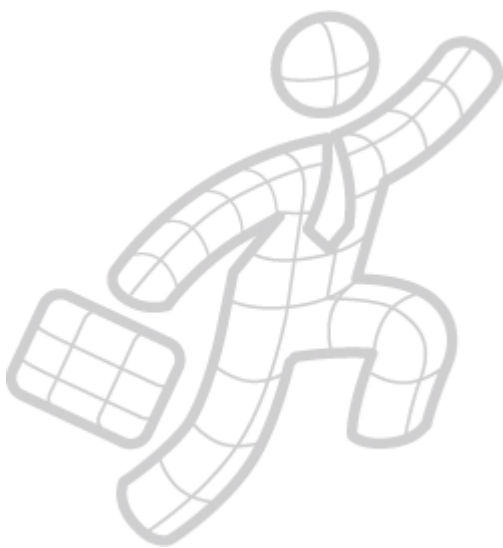
Specifically designed to meet the needs of investment partnerships, FundCount' products have been brewed using the latest technology, strong industry experience and focus on cost effectiveness.

System customizability, scalability, open architecture and constant updates keep our solutions up to date for years to come.

FundCount products can be adapted quickly to the requirements you face using built-in customization functions, or we will customize for you at a reasonable cost.

Our engineers will develop necessary custom interfaces if our products must exchange data with the other systems/programs (including other accounting systems) used by you.

A FundCount consultant will telephone you and walk you through the steps to set up your funds in the software. You will choose appropriate software settings, add first accounting transactions and generate reports together, to train you on how the system works. He will also answer your questions during the set up process. You may enable the consultant to view the same screens & software menus on his monitor as you do, thanks to the latest web conferencing technology.





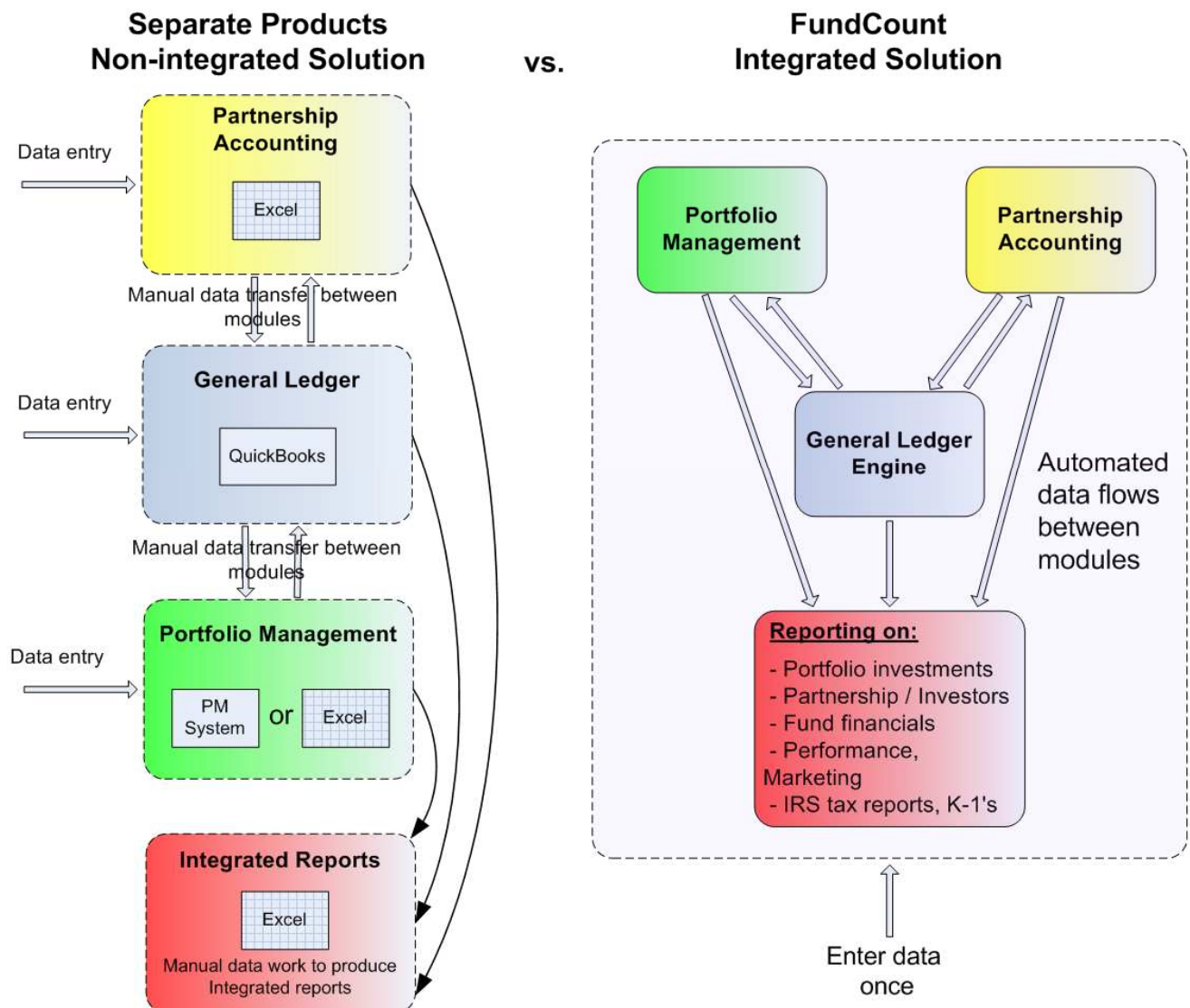
Complete Back Office Software Solution for Alternative Investments

Alternative investments have unique, complex back office needs. A complete solution has to meet your needs in a single, integrated package. FundCount has done the integration for you:

- **Partnership Capital Accounting**
- **General Ledger**
- **Portfolio Management**
- **Reporting**

When a firm tries to handle all of these needs, their back office is typically a collection of software tools that do not work together. FundCount brings all of these tools into a single product with a streamlined user interface. Now, you can simplify your back office:

Integrated Back Office Solution for Alternative Investment Industry





FC Office is a powerful accounting back office solution for investment funds and fund administrators that makes partnership and portfolio accounting & management tasks completion faster, easier and more accurate. Comprehensive reporting, close integration with FC Web, ease of use and affordable price put FC Office ahead of competing products.

Partnership/Shareholder Accounting features

Partnership/Shareholders

- ✓ View NAV, performance for an individual partner or whole partnership
- ✓ Compare against benchmarks.
- ✓ Track capital flows & commitments
- ✓ Track contributed securities
- ✓ Multi-currency classes of shares
- ✓ Use FC Office Partnership module with 3rd party portfolio management software,

Allocations

- ✓ Layering and aggregate methods of allocations of gains between investors. IRS approved.
- ✓ Hot issues, 10/90 rule. Side pockets.
- ✓ Sub-pools within the main pool
- ✓ Track tax withholdings for foreign partners.
- ✓ Election SEC 754

Performance fees

- ✓ Estimate, accrue and charge incentive & administrative fees using individual fee class for each partner.
- ✓ Multi series method of equalization for offshore funds.
- ✓ Fee parameters include Partner Basis, High Water Mark, Hurdle Rate & more.
- ✓ Track Referral commissions based on the amount of management or incentive fees paid by investors.

Tax preparation

- ✓ Generate IRS Form 1065 & K-1s
- ✓ Create/customize your own tax categories & run reports to prepare taxes in your country or state.
- ✓ Export data to a format of any 3rd party tax preparation or accounting package

Reporting

- ✓ Over 20 standard reports & charts can be generated on any date or date range.
- ✓ Save reports to HTML, Excel, PDF; charts to GIF files.
- ✓ Create integrated custom reports in Excel or in a third-party package supporting ODBC, like Microsoft® Access or Crystal Reports®.
- ✓ Multi-language capability lets you report in any World language to the partners. Easy set up of a new language.
- ✓ Cross-fund reporting (if investor has shares in more than one fund)
- ✓ FC Web gives you a password protected web site to publish reports & charts easily (one mouse click).

Features in development

- ✓ Development of any new feature can be accelerated per customer request



Portfolio Accounting/Analysis features

Instruments & Portfolios

- ✓ Equities, derivatives (options, futures, forex, forward, CFD, etc), multi-currency, fixed income securities, mortgages, Sec. 1256 contracts, mutual funds, partnerships, FoFs and more.
- ✓ Multi-portfolios (sub-pools with uneven contributions by investors)
- ✓ Wash sales wizard
- ✓ Model portfolios

Inventory methods

- ✓ FIFO, LIFO, tax lot, average cost accounting and more.

Performance

- ✓ View total or annualized rate of return for an instrument on a chart or report (IRR, TWR, SRR, FSRR).
- ✓ Compare performance against the specified indices using Indices Manager.
- ✓ Performance by industries, strategies, geography, etc.
- ✓ Portfolio statistics: beta, alpha, Sharpe, Sortino, deviations, etc.

Multicurrency

- ✓ Define base currency and specific currencies for an instrument. Track valuations and cash flow in the currency of related instrument, FX gains in base currency.

Broker data download & reconciliation

- ✓ Download account transactions from 19 brokers and 203 banks. New brokers/custodians can be added by user.
- ✓ Reconcile portfolio with any broker automatically

Data import/export

- ✓ Import from Quicken®, Open Financial Exchange (OFX), CSV, Excel or XML data formats.
- ✓ Import Template Manager (create custom parsing templates with Excel macros to import from any CSV, Excel or text files)
- ✓ Export data via XML API (web services).
- ✓ Download securities' and currency quotes from the Internet.

Reporting

- ✓ Over 20 reports & charts can be generated on any date or date range.
- ✓ Save reports to HTML, Excel, PDF; charts to GIF files.
- ✓ Create integrated custom reports in Excel or in a third-party package supporting ODBC, like Microsoft® Access or Crystal Reports®.
- ✓ Multi-language capability let you report in any World language to the partners. Easy set up of a new language.
- ✓ Publish reports & charts in your partnership's private area on the web (FC Web) with one mouse click.

Features in development

- ✓ Add new reports and charts.
- ✓ Development of any feature can be accelerated per customer request



General Ledger features

- ✓ Integrated with Partnership and Portfolio Accounting. Each partner and investment instrument have their accounts with sub-accounts in General Ledger, automatically added by the system.
- ✓ Customizable Chart of Accounts
- ✓ Can do sophisticated journal entries. Journal entry templates for repeated sets of entries.
- ✓ Automatic accrual of expenses (fixed amount, %-based or composite)
- ✓ Track Accounts Receivable / Accounts Payable
- ✓ "Off-balance" accounts
- ✓ Customizable mapping of Income/Expense accounts to sections of IRS Forms 1065 & K-1
- ✓ Multi-currency
- ✓ Reports for a Fund, Investment Portfolio and Partners based on G/L.
- ✓ Balance Sheet or Trial Balance can be drilled down to low-level sub-accounts of individual partners or investment instruments.
- ✓ Find reason of a discrepancy on Balance Sheet by one mouse click.
- ✓ Import journal entries from an Excel, CSV or text file (from a 3rd party software).

Sample view of Chart of Accounts

The screenshot displays the 'Chart of accounts' software interface. On the left, a tree view shows the hierarchy of accounts, including '301 - Capital accounts - partners' and '301102 - Earnings'. The right pane shows the 'Group details' for '301102 - Earnings', including its parent group '30110 - Peterson, Helen'. Below this is a 'Table of accounts' listing various sub-accounts like '5 year CG', 'Dividend', and 'Expense' with their respective parent groups and currencies.

Account ID	Account name	Parent group	Currency
301102801	5 year CG	301102 - Earnings	U.S. Dollar (USD), \$
301102101	Dividend	301102 - Earnings	U.S. Dollar (USD), \$
3011021201	Expense	301102 - Earnings	U.S. Dollar (USD), \$
3011021801	Foreign tax paid	301102 - Earnings	U.S. Dollar (USD), \$
3011021101	Income	301102 - Earnings	U.S. Dollar (USD), \$
301102301	Interest	301102 - Earnings	U.S. Dollar (USD), \$
301102901	LTCG	301102 - Earnings	U.S. Dollar (USD), \$
3011021001	LTCG 2	301102 - Earnings	U.S. Dollar (USD), \$
3011021501	Margin interest	301102 - Earnings	U.S. Dollar (USD), \$
3011021901	Mark-to-Market	301102 - Earnings	U.S. Dollar (USD), \$
3011021201	Mark-to-Market fee	301102 - Earnings	U.S. Dollar (USD), \$



Usability and Automation

Automation

- ✓ Workflow manager: create custom workflows to automate your fund accounting
- ✓ Data import from any Excel, CSV, TXT, XML, Quicken, QFX, OFX file format. Export to these formats: Excel, CSV, TXT, XML, with a user-defined internal file structure.
- ✓ API (Application Program Interface) - connect to the software via web services technology to retrieve the data/ integrate with other systems
- ✓ Scheduled tasks: data import, etc
- ✓ Create custom reports right out of Excel. You can even use your existing administrator Excel spread sheets as report templates.
- ✓ Wash sale wizard

Usability

- ✓ User-friendly interface for navigating through the software
- ✓ Open any report in Excel or PDF with a mouse click
- ✓ Define groups of reports (report sets) to be open with a mouse click
- ✓ Find any menu item, form or report in the software by just start typing in it's name
- ✓ Drill down to underlying sub-report or a transaction edit screen right from a report with a mouse click
- ✓ Send a report by email as an attachment right from the software
- ✓ Find a text and numbers in a report with convenient search interface
- ✓ Copy / Pasting from text of reports. Use Ctrl+C to copy a text or numbers from a report, and Ctrl+V to paste.
- ✓ Customizable toolbar - place most frequently used menu items on the software toolbar



Other features

- ✓ **Master feeder structures** – unlimited number of levels. Fully automated cash flows between master and feeder, appreciation/depreciation flow from a master down to feeders, including that by tax categories.
- ✓ **Umbrella and SPV funds** – with consolidated financials for several “cell” funds.
- ✓ **Integrate with other systems:** FC Office system is written in Java language and utilizes a 3-tier architecture: Database server, Application server and a Thin client application. Built-in Open Application Program Interface (API) accessible via Web Services technology allows for smooth integration with the other software systems.
- ✓ **Security:** manage users and groups in the system, specify access permissions, passwords.
- ✓ **Audit trail:** keep track of all users activity in the system, generate a report
- ✓ **Networking:** system can operate in a network environment like LAN or Internet without a compulsory usage of Citrix® or Remote Desktop Connection.



System minimum requirements

Hardware

Processor: IBM-compatible 1.5GHz or higher

RAM: 1GB

HDD space: 500MB

Monitor resolution: 1024 x 768

Operating system

Microsoft Windows 98/NT/2000/2003/XP/Vista or Unix/Linux

Default SQL database (included in installation package): MySQL.

Network

LAN: system can be run on your office LAN or Internet server / network.

Internet: 56K modem is enough to download valuations and upload data to FC Web.

FC Office system has a 3 tier architecture: SQL database server + Application server + Thin client. Application server and Thin client.

The thin client can be installed on a workstation and connect remotely (via Internet or LAN) to the Application server, which then connects to the database server.

The software has been written in pure Java.

For system scalability several application and database servers can be run on multiple computers in parallel.



FC Web is an online reporting platform for hedge funds and family offices.

Financial advisors get their own branded secure Web site to collaborate with their clients. Investors can view their statements, fund's selective reports, files and messages 24 hours a day, 7 days a week.

One mouse click is enough to publish your fund information from FC Office to FC Web.

Features

Fund-branded Web site

- ✓ View the same reports, charts & graphs as in FC Office.
- ✓ Customize web site look and feel per your fund or company.
- ✓ Upload documents and files to be viewed by partners.
- ✓ Post messages and notifications to the partners.

Security

- ✓ Each partner/investor has 24x7 access to the sections of the fund's web site defined by fund manager.
- ✓ SSL encryption

Client reporting

- ✓ Enable your investors to view their current and past statements as well as selective fund level information anytime, anywhere.
- ✓ Limited partners have access to the part of fund's web site opened for them by fund manager who manages client online security profiles.
- ✓ FC Web is fully integrated with FC Office. You can upload reports from your FC Office to FC Web by one mouse click



Contact us for more information:

FundCount LLC

130 Shore Rd # 360
Port Washington, NY 11050

Tel: 1-877-727-5776

Fax: 1-281-220-1364

Web: www.fundcount.com

E-mail: info@fundcount.com

Please contact us to schedule a free live software demo delivered right to your web browser over the Internet. You will be able to speak with our staff member on the phone and ask your questions during the demonstration.



FundCount Sample Reports

Table of Contents

General Ledger

Trial Balance.....	4
Balance Sheet.....	5
Balance Sheet – via Custom Report Writer.....	6
Balance Sheet – Multi-Fund.....	7
Income Statement.....	8
Income Statement – Multi-Fund.....	9
Income Statement / Side Pocket, by income/expense categories.....	10
Income Statement / Side Pocket, by side pocket.....	11
Accounts Journal.....	12

Investor Statements

Performance and Capital Summary.....	13
Investor Statement via Custom Report Writer.....	15
Partner Unit Appraisal.....	16
Fund and Partner Performance History.....	17
Individual Valuation Unit Ledger.....	18
Withdrawal Report.....	19
IRS Tax Schedule K-1.....	20

Partnership / Shareholders

Partners Status.....	23
Partners Account Activity.....	24
Partners Account Activity with Side Pocket.....	25

Partners Account Activity (Series, Units, NAV, Performance IRR).....	26
Partners Ac-t Activity (Class, Units, NAV, Performance IRR).....	27
Partners Information.....	28
Time Weighted Return Details.....	29
Allocation Percentages.....	30
Hot Issue Gains Allocation.....	31
Partner Ownership.....	32
IRS Tax Form 1065.....	33

Partnership / Shareholders Transactions

Contract note.....	37
Cash Contributions and Withdrawals.....	38
Management Fee Payment History.....	39
Outstanding Commitments for Investors.....	40

Portfolio

Holdings by Broker, by Asset Type, Tax Lot Details	41
Profit and Loss and Ending Values, by Industry, with Return %.....	42
Profit and Loss, by Asset Type, Tax Lots Details.....	43
Profit and Loss, by Industry.....	44
Holdings by Country, by Instrument	45
Holdings by Side Pockets.....	46
Performance History by Instrument vs. Benchmark.....	47
Performance History by Sector vs. Benchmark	48
Closed Trades Analysis.....	49
Mortgages Collateral Statement.....	50
Debt Instruments Portfolio.....	51
Loan Aging Report.....	52
Fund Statistics.....	53
Asset Allocation History.....	54
Asset Allocation: Target vs. Actual.....	55
Performance and Capital Summary for Portfolio.....	56
Assets by Holding Period.....	57
Commitments: Investors vs. Investments.....	58
Fund Structure (Master - Feeder).....	59

Portfolio Transactions

Wash Sale Wizard..... 60

Portfolio Reconciliation..... 61

Transaction Summary..... 62

Schedule D Capital Gains and Losses..... 63

Investment History..... 64

Unsettled Trades..... 65

Dividends Pending..... 66

Price History..... 67

FX Rates History..... 68

FX Deals..... 69

Cash Flow History & Projection..... 70

Outstanding Commitments for Investments..... 71

FundCount Sample Reports: General Ledger: Trial Balance



Platinum Demo Fund
 12345 S. Expressway M/S 3102
 Dallas, TX 65432
 United States of America

Trial Balance

April 15, 2008 - October 31, 2008

Acct. ID and Name	Beg. Balance		Journal Entries		End. Balance	
	Dr	Cr	Dr	Cr	Dr	Cr
Assets						
<u>106 - Interactive Brokers</u>						
<u>1062 - Portfolio</u>			6,981,618.35	6,899,544.85	82,073.50	
Interactive Brokers			12,821,042.71	12,078,559.26	742,483.45	
Sub-total for 106 - Interactive Brokers	0.00	0.00	19,802,661.06	18,978,104.11	824,556.95	0.00
Sub-total for Assets	0.00	0.00	19,802,661.06	18,978,104.11	824,556.95	0.00
Liabilities						
<u>209 - Interactive Brokers</u>						
<u>2092 - Portfolio</u>			5,156,652.12	5,469,433.92		312,781.80
Sub-total for 209 - Interactive Brokers	0.00	0.00	5,156,652.12	5,469,433.92	0.00	312,781.80
Sub-total for Liabilities	0.00	0.00	5,156,652.12	5,469,433.92	0.00	312,781.80
Equity						
<u>301 - Capital accounts - partners</u>						
<u>3012 - Allen, George</u>			34,113.97	87,157.17		53,043.20
<u>3013 - Carter, Barbara</u>			192,395.79	638,112.19		445,716.40
<u>3011 - Harris, James</u>			19,057.62	48,645.26		29,587.64
Sub-total for 301 - Capital accounts - partners	0.00	0.00	245,567.39	773,914.63	0.00	528,347.24
302 - Undistributed gains/losses			573,151.62	573,151.62		
Sub-total for Equity	0.00	0.00	818,719.00	1,347,066.24	0.00	528,347.24
Total	0.00	0.00	25,778,032.18	25,794,604.27	824,556.95	841,129.04
Income						
4015 - Dividend				604.88		604.88
40122 - STCG			237,695.05	309,930.67		72,235.62
40124 - Unrealized Gain			11,717.41	17,204.15		5,486.74
Sub-total for Income	0.00	0.00	249,412.46	327,739.70	0.00	78,327.24
Total Profit / Loss	0.00	0.00	0.00	78,327.24	0.00	78,327.24

11/18/2008 16:36:49



Platinum Demo Fund
 12345 S. Expressway M/S 3102
 Dallas, TX 65432
 United States of America

Balance Sheet

as of November 18, 2008

Acct. ID and Name	Balance (base currency)	Balance (local currency)
<u>100 - Assets</u>		
<u>1002 - UBS</u>	51,660.27	
<u>1001 - Wells-Fargo Bank</u>		
<u>10010 - Portfolio</u>	6,964.67	
Wells-Fargo Bank	12,029.88	9,500.00 EUR
Sub-total for 1001 - Wells-Fargo Bank	18,994.55	
Total for 100 - Assets	70,654.83	
<u>200 - Liabilities</u>		
<u>2002 - UBS</u>	3,742.00	
2008 - Accounting fees payable	1,000.00	
203 - Management Fee Payable	1,000.00	
Total for 200 - Liabilities	5,742.00	
<u>300 - Equity</u>		
<u>301 - Capital accounts - partners</u>		
<u>3013 - Berlusconi, Don</u>	5,357.09	
<u>3014 - Lee, Evelyn</u>	4,838.28	
<u>3018 - Maddalino, Lucy</u>	5,347.97	
<u>3015 - McDowell, Andrew</u>	6,415.15	
<u>3016 - Mitchell, Barbara</u>	19,079.42	
<u>30113 - Murray, Charles</u>	5,141.28	
<u>30110 - Peterson, Helen</u>	5,886.98	
<u>30111 - Porche, Roxanna</u>	4,982.02	
<u>30112 - Troy, Melisa</u>	5,870.08	
Sub-total for 301 - Capital accounts - partners	62,918.27	
302 - Undistributed gains/losses	1,994.55	
Total for 300 - Equity	64,912.83	
Total Liabilities & Equity	70,654.83	
Total Number of Units Held		1,000.00
Net Asset Value per Unit		62.92

11/18/2008 17:10:15

FundCount Sample Reports: General Ledger: Balance Sheet

Balance Sheet

as of Jan 01, 2007

Acct. ID and Name	01-Jan-07		31-Dec-07		Movement (base currency)
	Balance (base currency)	Balance (local currency)	Balance (base currency)	Balance (local currency)	
ASSETS					
CASH					
10025891 - Pershing - CHF	36.51	58.73 CHF	(0.00)	-0.00 CHF	(36.51)
10026171 - Pershing - EUR	(389,619.61)		16,942.94		406,562.55
100481 - Pershing-CAD	420,116.49	645,935.57 CAD	372,523.00	537,861.68 CAD	(47,593.50)
100551 - Pershing-USD	1,946,776.24	2,545,799.29 USD	2,162,285.19	3,182,639.37 USD	215,508.95
	1977309.632		2551751.124		
DUE FROM BROKERS					
100552 - Pershing-USD	-	0.00 USD	138,917.09	204,470.26 USD	138,917.09
	0		138917.0946		
LONG POSITIONS					
100480 - Pershing-CAD	10,787,491.43	0.00 CAD	10,921,311.35	0.00 CAD	133,819.92
100550 - Pershing-USD	8,211,187.00	0.00 USD	8,579,252.71	0.00 USD	368,065.71
	18998678.44		19500564.06		
OTHER ASSETS					
Advance in CAD & USD paid from Euro	7,741,021.47		7,741,021.47		-
Advance in CAD from USD	5,430,873.20		5,430,873.20		-
Advance in Euro paid from USD	804,120.96		804,120.96		-
Advance in USD paid from CAD	447,156.03		447,156.03		-
CHF advance paid from USD	21,550.37		21,550.37		-
102 - Net Organizational Costs	1,793.80		-		(1,793.80)
Pershing-CAD Cash - Forex Adjustment	6,243.09		(8,866.28)		(15,109.37)
Pershing-CAD Equities - Forex adjustment	145,098.32		(259,933.91)		(405,032.23)
Pershing-USD Cash - Forex adjustment	(15,517.03)		7,288.90		22,805.93
Pershing-USD Equities - Forex adjustment	(54,527.53)		28,919.96		83,447.49
Receivable from BFA	100.00		100.00		-
Take-on Fee Cap: Acc Amortisation	(1,000.00)		(1,666.72)		(666.72)
Take-on Fee Capitalized	2,000.00		2,000.00		-
USD Receivable - Wire to Coastport Capital fro Pvt Placement	208,110.00		208,110.00		-
	14737022.68		14420673.98		
PRIVATE INVESTMENTS					
1002624 - Private Investments-CAD	687,227.99	0.00 CAD	422,504.07	0.00 CAD	(264,723.92)
1002631 - Private Investments-USD	189,905.83	0.00 USD	272,676.07	0.00 USD	82,770.24
1003689 - Warrants long (CAD)	-	0.00 CAD	0.01	0.00 CAD	0.01
Interest receivable on 10% Gold Run Inc Prom Note	6,372.51	8,333.33 USD	22,882.56	33,680.54 USD	16,510.05
	883506.325		718062.713		
TOTAL ASSETS	36596517.07		37329968.97		
LIABILITIES					
DUE TO BROKERS					
200551 - Pershing-USD	(0.00)	-0.00 USD	127,388.86	187,502.00 USD	127,388.86
	-0		127388.8588		
OTHER LIABILITIES					
2006 Audit Fee Provision	7,647.01	10,000.00 USD	(0.00)	-0.00 USD	(7,647.01)
2006 Government Licence Fee	(0.00)	-0.00 USD	237.79	350.00 USD	237.79
2006 Mutual Fund Recognition Fee	267.65	350.00 USD	237.79	350.00 USD	(29.86)
2006 Registered Office/Agent Fees	(0.00)	-0.00 USD	509.55	750.00 USD	509.55
2007 Audit Fee Provision	(0.00)	-0.00 USD	6,793.99	9,999.98 USD	6,793.99
Administrative fees payable	(0.00)		12,431.11		12,431.11
Advance in CAD received (USD & Euro)	5,030,873.21		5,030,873.21		-
Advance received in CHF	21,500.90		21,500.90		-
Advance received in EURO	804,120.00		804,120.00		-
Advance received in USD	8,588,177.50		8,588,177.50		-
CAD payable for USD Coastport Capital Priv. Placement wire	208,110.00		208,110.00		-
Front end fee rebate	18,351.48		17,361.38		(990.10)
204 - Incentive Fee Payable	37,214.26		385,734.04		348,519.78
203 - Management Fee Payable	(37,215.28)		104,002.41		141,217.69
Quarterly administrative and accounting fees payable	(0.00)		2,000.00		2,000.00
202 - Redemptions Payable	(0.00)		(0.01)		(0.01)
Subscriptions received in Advance	413,000.00		(0.00)		(413,000.00)
Voting share value	100.00		100.00		-
	15092146.73		15182189.66		
TOTAL LIABILITIES	15092146.73		15309578.52		
EQUITY					
Voting share value	86,632.08		(0.00)		(86,632.08)
CAPITAL ACCOUNTS - PARTNERS					
30119 - VPB	153,126.54		(0.00)		(153,126.54)
	153126.54		-0		
TOTAL EQUITY	239758.6248		-4.35398E-09		
TOTAL EQUITY & LIABILITIES	15331905.35		15309578.52		



Global Opportunity Alfa Fund
 12345 S. Expresway M/S 3102
 Dallas, TX 65432
 United States of America

Balance Sheet

as of October 31, 2008

Acct. ID and Name	Balance (base currency)	Balance (local currency)
100 - Assets		
<u>Global Opportunity Alfa Fund</u>		
115 - Charles Schwab	650,390.23	
<u>110 - Interactive Brokers - EUR</u>		
1103 - IB Accrued interest - EUR	10.20	8.00 EUR
110 - Interactive Brokers - EUR	29,312.97	22,994.17 EUR
Sub-total for 110 - Interactive Brokers - EUR	29,323.17	
<u>112 - Interactive Brokers - GBP</u>	-9,586.50	
<u>114 - Interactive Brokers - JPY</u>	-15,973.54	
<u>106 - Interactive Brokers - USD</u>	783,791.76	
<u>107 - Wells Fargo - Checking</u>	4,999.83	
<u>116 - Wells Fargo - MMA</u>	607.31	
<u>117 - Wells Fargo - Performance Savings</u>	1,068,565.56	
<u>109 - Wells Fargo - Weekend Sweep</u>	7,062.04	
Sub-total for Global Opportunity Alfa Fund	2,519,179.86	
<u>Intrinsic Opportunity Beta Fund</u>	37,106.72	
<u>Vietnam Corporate Fund</u>	7,715.37	
Total for 100 - Assets	2,564,001.94	
200 - Liabilities		
<u>Global Opportunity Alfa Fund</u>	6,422.75	
<u>Intrinsic Opportunity Beta Fund</u>	0.00	
<u>Vietnam Corporate Fund</u>	0.00	
Total for 200 - Liabilities	6,422.75	
300 - Equity		
<u>Global Opportunity Alfa Fund</u>	2,512,757.11	
<u>Intrinsic Opportunity Beta Fund</u>	37,106.72	
<u>Vietnam Corporate Fund</u>	7,715.37	
Total for 300 - Equity	2,557,579.19	
Total Liabilities & Equity	2,564,001.94	

11/18/2008 18:11:10



Platinum Demo Fund
 12345 S. Expressway M/S 3102
 Dallas, TX 65432
 United States of America

Income Statement

March 08, 2000 - November 18, 2008

Acct. ID and Name	Period	QTD	YTD
	03/08/00 11/18/08	10/01/08 11/18/08	01/01/08 11/18/08
Income			
Currency conv. gain	3,994.55	3,994.55	3,994.55
Dividend	118.33		
Income	31.84		
LTCG	-3,398.93		
Mgmt. fee received	440.45		
STCG	-571.33		
Unrealized Gain	2,656.64		
Total for Income	3,271.55	3,994.55	3,994.55
Expense			
Expense	-291.50		
Mgmt. fee paid	-440.45		
Total for Expense	-731.95	0.00	0.00
Total for Income & Expense	2,539.60	3,994.55	3,994.55

11/18/2008 17:02:05



Global Opportunity Alfa Fund
 12345 S. Expresway M/S 3102
 Dallas, TX 65432
 United States of America

Income Statement

October 01, 2008 - October 31, 2008

Acct. ID and Name	Period 10/01/08 10/31/08	QTD 10/01/08 10/31/08	YTD 01/01/08 10/31/08
Income			
<u>1256 LTCC</u>			
<u>Global Opportunity Alfa Fund</u>	-70,990.10	-70,990.10	-134,924.60
<u>Intrinsic Opportunity Beta Fund</u>			-44.67
Subtotal for 1256 LTCC	-70,990.10	-70,990.10	-134,969.28
<u>1256 STCC</u>			
<u>Currency conv. gain</u>	-1,616.09	-1,616.09	-1,900.75
<u>Dividend</u>	976.18	976.18	1,583.91
<u>FX Realized Gain</u>	0.57	0.57	-60.98
<u>FX Unrealized Gain</u>	-1,494.43	-1,494.43	-723.39
<u>Interest</u>			
<u>Global Opportunity Alfa Fund</u>	2,866.08	2,866.08	4,870.91
<u>Intrinsic Opportunity Beta Fund</u>			116.43
<u>Vietnam Corporate Fund</u>			1.13
Subtotal for Interest	2,866.08	2,866.08	4,988.47
<u>Long Term Gains - Futures</u>	-70,990.10	-70,990.10	-134,924.60
<u>Mgmt. fee received</u>			3,394.24
<u>Unrealized Gain</u>	173,682.34	173,682.34	162,933.47
Total for Income	-14,892.27	-14,892.27	-189,658.43
Expense			
<u>Accounting - Audit & Taxes</u>			-2,929.38
<u>Accounting - General</u>			-9,750.00
<u>Banking fees</u>	1.90	1.90	-249.44
<u>Change in accrued commissions</u>			-186.53
<u>Data fees</u>			-558.68
<u>Expense</u>			-2,376.25
<u>Legal</u>			-58,735.08
<u>Mgmt. fee paid</u>			-3,311.41
Total for Expense	1.90	1.90	-78,096.77
Total for Income & Expense	-14,890.37	-14,890.37	-267,755.20

11/18/2008 18:12:14



Platinum Demo Fund
 12345 S. Expressway M/S 3102
 Dallas, TX 65432
 United States of America

Income Statement

March 08, 2000 - December 31, 2004

Acct. ID and Name	Period	QTD	YTD
	03/08/00 12/31/04	10/01/04 12/31/04	01/01/04 12/31/04
Income			
Dividend			
Main Pool	113.93		
Side Pocket A	4.40		
Subtotal for Dividend	118.33		
Income	31.84		
LTCG	-3,398.93		427.92
Mgmt. fee received	440.45		440.45
STCG			
Main Pool	-736.38		1,068.00
Side Pocket A	165.05		165.05
Subtotal for STCG	-571.33		1,233.05
Unrealized Gain			
Main Pool	2,868.79		-7,930.05
Side Pocket A	-212.15		1,128.85
Subtotal for Unrealized Gain	2,656.64		-6,801.20
Total for Income	-723.00	0.00	-4,699.78
Expense			
Expense			
Main Pool	-291.50		
Subtotal for Expense	-291.50		
Mgmt. fee paid			
Main Pool	-440.45		-440.45
Subtotal for Mgmt. fee paid	-440.45		-440.45
Total for Expense	-731.95	0.00	-440.45
Total for Income & Expense	-1,454.95	0.00	-5,140.23

12/02/2008 17:14:25



Platinum Demo Fund
 12345 S. Expressway M/S 3102
 Dallas, TX 65432
 United States of America

Income Statement

March 08, 2000 - December 31, 2004

Acct. ID and Name	Period	QTD	YTD
	03/08/00 12/31/04	10/01/04 12/31/04	01/01/04 12/31/04

Income

Main Pool

Dividend	113.93		
Income	31.84		
LTCG	-3,398.93		427.92
Mgmt. fee received	440.45		440.45
STCG	-736.38		1,068.00
Unrealized Gain	2,868.79		-7,930.05
Subtotal for Main Pool	-680.30		-5,993.68

Side Pocket A

Dividend	4.40		
STCG	165.05		165.05
Unrealized Gain	-212.15		1,128.85
Subtotal for Side Pocket A	-42.70		1,293.90

Total for Income -723.00 0.00 -4,699.78

Expense

Main Pool

Expense	-291.50		
Mgmt. fee paid	-440.45		-440.45
Subtotal for Main Pool	-731.95		-440.45

Total for Expense -731.95 0.00 -440.45

Total for Income & Expense -1,454.95 0.00 -5,140.23

12/02/2008 17:17:50

FundCount Sample Reports: General Ledger: Accounts Journal



Platinum Demo Fund
 12345 S. Expressway M/S 3102
 Dallas, TX 65432
 United States of America

Accounts Journal

April 17, 2001 - October 31, 2001

Date	Debit	Credit	UBS	Remarks	Transaction
04/17/01			600.48		
04/17/01	1.09		601.57	Dividend, UBS account, 1.09	
05/04/01	0.86		602.43	Div-Cash for CVS CORP, 05/04/2001 payment date, UBS account, 0.86, foreign tax paid 0.00, ex-dividen	
05/09/01		516.14	86.29	Buy of PFIZER INCORPORATED, UBS account, 05/09/2001 settlement date, block #12, 11.000000sh./ct., in	
05/09/01	700.00		786.29	Deposit to UBS account Berlusconi, Don to Default portfolio 100.00; Murray, Charles to Default portf	
05/15/01	1.56		787.85	Div-Cash for HASBRO, 05/15/2001 payment date, UBS account, 1.56, foreign tax paid 0.00, ex-dividend	
05/31/01	3.17		791.02	Dividend, UBS account, 3.17	
06/01/01		14.00	777.02	Expense, UBS account, 14.00	
06/01/01	0.32		777.34	Div-Cash for LUCENT TECHNOLOGIES, 06/01/2001 payment date, UBS account, 0.32, foreign tax paid 0.00,	
06/13/01		699.33	78.01	Buy of EMC CORP MASS, UBS account, 06/13/2001 settlement date, block #13, 10.000000sh./ct., inventor	
06/13/01		359.95	-281.94	Buy of AT&T CORP, UBS account, 06/13/2001 settlement date, block #14, 10.000000sh./ct., inventory me	
06/13/01	1,010.00		728.06	Deposit to UBS account Murray, Charles to Default portfolio 100.00; Troy, Melisa to Default portfoli	
06/19/01		777.14	-49.08	Buy of BORDERS GROUP INC, UBS account, 06/19/2001 settlement date, block #15, 45.000000sh./ct., inve	
06/22/01	2.52		-46.56	Dividend, UBS account, 2.52	
08/01/01	2.20		-44.36	Div-Cash for AT&T CORP, 08/01/2001 payment date, UBS account, 2.20, foreign tax paid 0.00, ex-divide	
08/04/01	0.86		-43.50	Div-Cash for CVS CORP, 08/04/2001 payment date, UBS account, 0.86, foreign tax paid 0.00, ex-dividen	
08/15/01	1.56		-41.94	Div-Cash for HASBRO, 08/15/2001 payment date, UBS account, 1.56, foreign tax paid 0.00, ex-dividend	
08/15/01	1,070.00		1,028.06	Deposit to UBS account Murray, Charles to Default portfolio 200.00; Maddalino, Lucy to Default portf	
08/18/01		733.08	294.98	Buy of FIRSTAR CORP NEW WISC, UBS account, 08/18/2001 settlement date, block #16, 30.000000sh./ct.,	
08/31/01	1.41		296.39	Dividend, UBS account, 1.41	
09/01/01	0.32		296.71	Div-Cash for LUCENT TECHNOLOGIES, 09/01/2001 payment date, UBS account, 0.32, foreign tax paid 0.00,	
09/07/01	0.99		297.70	Div-Cash for PFIZER INCORPORATED, 09/07/2001 payment date, UBS account, 0.99, foreign tax paid 0.00,	
09/11/01		702.08	-404.38	Full Withdrawal in cash for Brito, Jose from UBS account , 702.08 in cash, fee \$0.00	
09/12/01	900.00		495.62	Deposit to UBS account McDowell, Andrew to Default portfolio 150.00; Porche, Roxanna to Default port	
09/17/01		73.50	422.12	Expense, UBS account, 73.50	
09/19/01	286.03		708.15	Sell of COMPUWARE CORP, UBS account, 09/19/2001 settlement date, 32.000000sh./ct., inventory method	
09/29/01	3.82		711.97	Dividend, UBS account, 3.82	
10/02/01	6.05		718.02	Spinoff for LUCENT TECHNOLOGIES, new security AVAYA INC, rem. basis fr. 0.966771, 1.526367sh./ct., @	
10/16/01	4.88		722.90	Div-Cash for FIRSTAR CORP NEW WISC, 10/16/2001 payment date, UBS account, 4.88, foreign tax paid 0.0	
10/17/01		788.45	-65.55	Buy of EMC CORP MASS, UBS account, 10/17/2001 settlement date, block #17, 8.000000sh./ct., inventory	
10/17/01	750.00		684.45	Deposit to UBS account Maddalino, Lucy to Default portfolio 100.00; Troy, Melisa to Default portfoli	
10/23/01		812.95	-128.50	Buy of JOHNSON CONTROLS INC, UBS account, 10/23/2001 settlement date, block #18, 14.000000sh./ct., i	
10/31/01	6.43		-122.07	Dividend, UBS account, 6.43	
Total	4,754.07	5,476.62	-122.07		

11/18/2008 17:23:15



Platinum Demo Fund
 12345 S. Expressway M/S 3102
 Dallas, TX 65432
 United States of America

Performance and Capital Summary

March 01, 2003 - December 31, 2004

(BAM) Barbara Mitchell
 12345 North 53th Ave
 London, 12345
 United Kingdom (Great Britain)
 (333) 888-8899
 (555) 111-8811

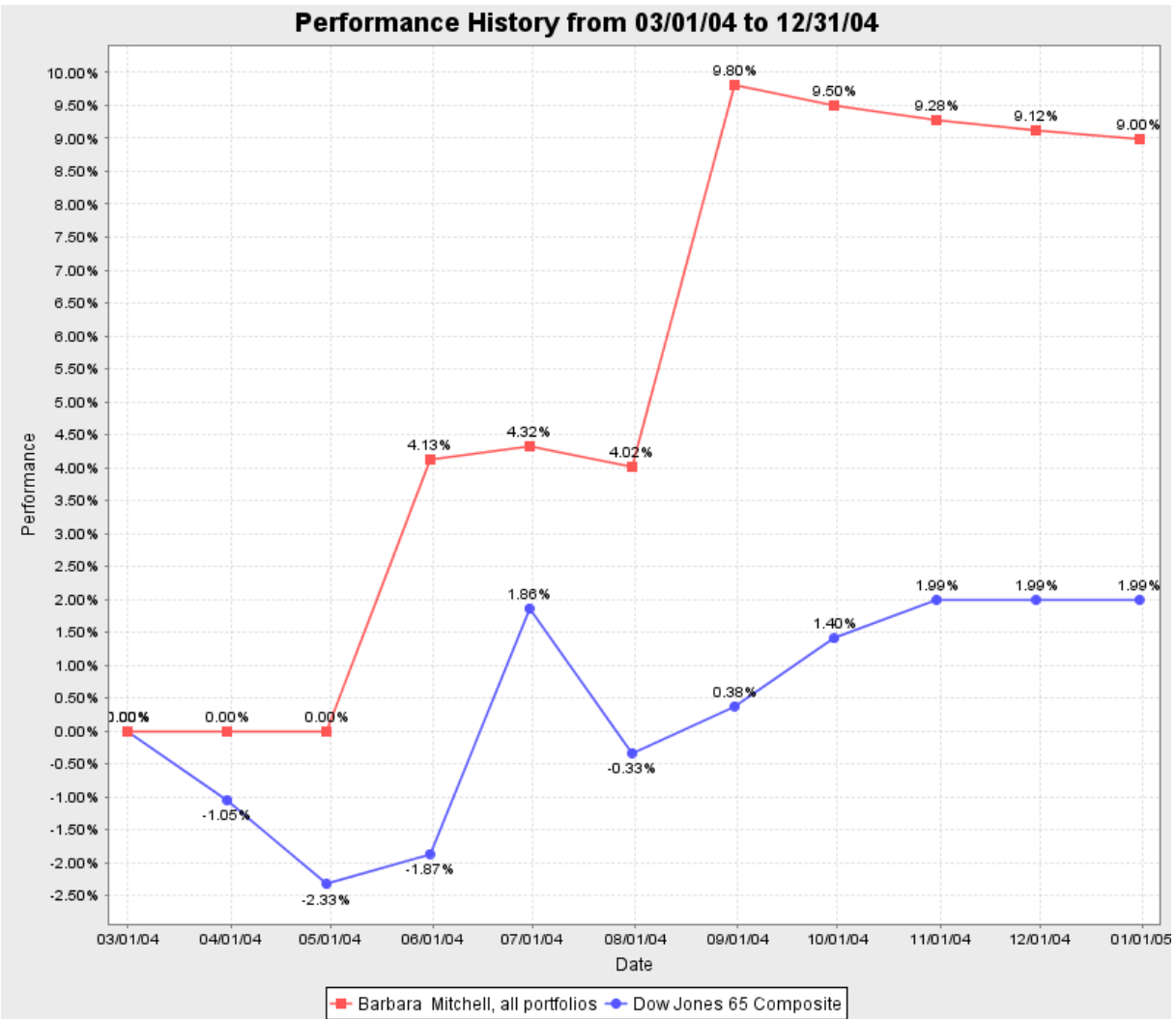
Unit Price Summary

	Beginning		Ending		Change	
	Unit price	Market value	Unit price	Market value	Unit price	Market value
From 03/01/2003	15.044560	786.88	47.918270	4,079.42	218.51%	418.43%
Month to Date (From 12/01/2004)	47.918270	4,079.42	47.918270	4,079.42	0.00%	0.00%
Last 3 Months (From 10/01/2004)	47.918270	4,079.42	47.918270	4,079.42	0.00%	0.00%
Quarter to Date (From 10/01/2004)	47.918270	4,079.42	47.918270	4,079.42	0.00%	0.00%
YTD (From 01/01/2004)	26.058500	1,362.95	47.918270	4,079.42	83.89%	199.31%
Since Inception (02/12/2002)	11.994950		47.918270	4,079.42	299.49%	

Capital Summary

	From 03/01/2003 to 12/31/2004	Month to Date	Last 3 Months	Quarter to Date	Year to Date	Inception 02/12/2002 to Date
Beginning Equity	786.88	4,079.42	4,079.42	4,079.42	1,362.95	0.00
Deposits	3,000.00	0.00	0.00	0.00	3,000.00	3,850.00
LTCG	25.77	0.00	0.00	0.00	25.77	-7.99
STCG	150.32	0.00	0.00	0.00	150.32	127.45
Unrealized Gain	116.45	0.00	0.00	0.00	-459.62	109.96
Withdrawals	0.00	0.00	0.00	0.00	0.00	0.00
Gross Capital Balance	4,079.42	4,079.42	4,079.42	4,079.42	4,079.42	4,079.42
Profit / Loss	292.54	0.00	0.00	0.00	-283.53	229.42
Gross Return	14.57%	0.00%	0.00%	0.00%	-7.64%	14.94%
Ending Net Capital Balance	4,079.42	4,079.42	4,079.42	4,079.42	4,079.42	4,079.42
Net Profit / Loss	292.54	0.00	0.00	0.00	-283.53	229.42
Net Return	14.57%	0.00%	0.00%	0.00%	-7.64%	14.94%
Dow Jones 65 Composite	39.80%	0.00%	0.58%	0.58%	2.52%	7.39%

Note: The above amounts are unaudited and are not to be used for income tax purposes



	Barbara Mitchell, all portfolios		Dow Jones 65 Composite	
	Period	Cumulative	Period	Cumulative
03/01/04 - 03/01/04	0.00%	0.00%	0.00%	0.00%
03/01/04 - 03/31/04	0.00%	0.00%	-1.05%	-1.05%
04/01/04 - 04/30/04	0.00%	0.00%	-1.29%	-2.33%
05/01/04 - 05/31/04	2.69%	4.13%	0.47%	-1.87%
06/01/04 - 06/30/04	0.49%	4.32%	3.80%	1.86%
07/01/04 - 07/31/04	0.00%	4.02%	-2.15%	-0.33%
08/01/04 - 08/31/04	4.70%	9.80%	0.71%	0.38%
09/01/04 - 09/30/04	0.00%	9.50%	1.02%	1.40%
10/01/04 - 10/31/04	0.00%	9.28%	0.58%	1.99%
11/01/04 - 11/30/04	0.00%	9.12%	0.00%	1.99%
12/01/04 - 12/31/04	0.00%	9.00%	0.00%	1.99%

11/19/2008 17:32:49

Evergreen Valley Credit Pool, LLC

Valley Credit Management Monthly Statement

November 24, 2008

Dear Lee, Evelyn:

Below you will find your Personal Monthly Activity Summary and Credit Pool Performance and Capital Summary for the Evergreen Valley Credit Pool, LLC, for the month ending 01/01/2001. Also enclosed is a copy of the CCX Valley Market Report for January, 2001, courtesy of the Chicago Climate Exchange.

I hereby affirm that to the best of my knowledge and belief, the information contained in this statement is accurate and complete.

Regards,

John Regan
 Managing Director
 Valley Credit Management, LLC

Your Personal Monthly Activity Summary: 01/01/2001 - 12/31/2004

The summary below reflects the performance of your personal account participating in the Evergreen Valley Credit Pool, LLC.

01/01/2001	Balance Forward	\$0.00
	Deposit of Credits	\$4,270.00
	Withdrawals	\$0.00
	Profit/Loss	\$568.28
	Management Fees	472.4663875
12/31/2004	Ending Balance	\$4,838.28

Capital Changes	Unit	Net Asset Value	Market Value	Period Performance	Year to Date Performance
\$568.28	100.969	\$0.00	\$4,838.28	-18.35%	-18.77%



Evergreen Valley
corp.

Evergreen Valley Credit Pool, LLC

39 Lonesome Street, Suite 225 • Ashland, KY 91308 • t: 782.563.8989 • f: 782.563.9090 • www.evallmngt.com



Platinum Demo Fund
 12345 S. Expressway M/S 3102
 Dallas, TX 65432
 United States of America

Partner Unit Appraisal

December 31, 2003 - December 31, 2004

(EVL) Lee, Evelyn

Economic Allocation

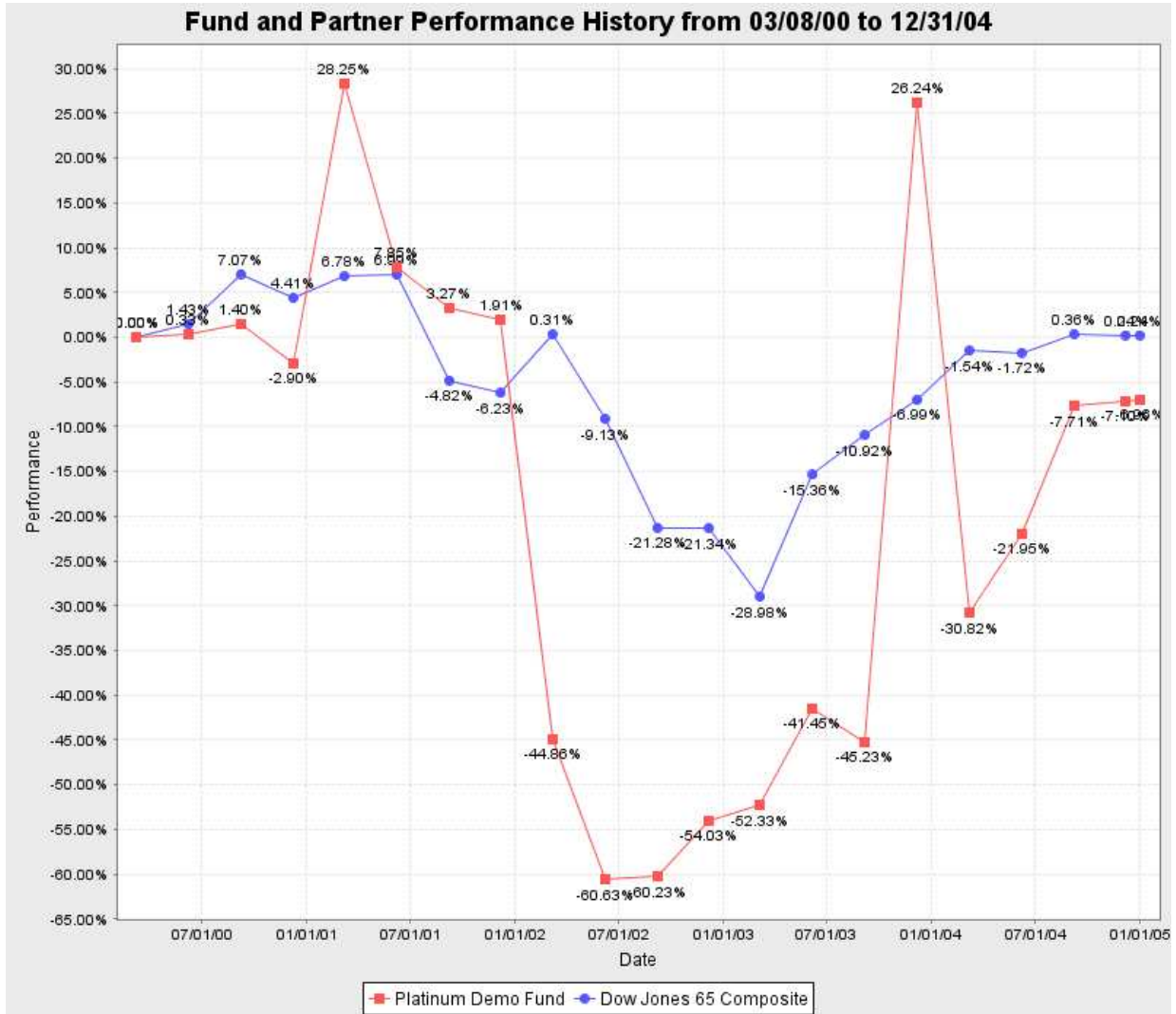
Total Units Held 100.96934414
 Current Unit NAV USD47.91827042
 Total Market Value USD4,838.28

Period	Capital Changes	Unit	NAV	Market Value	Period Performance	YTD Performance	Since Inception
12/31/03 - 01/30/04	1,000.00	76.72952595	35.06	2,690.02	0.00%	0.00%	44.65%
01/31/04 - 02/28/04	0.00	76.72952595	35.06	2,690.02	0.00%	0.00%	43.11%
02/29/04 - 03/30/04	-666.67	76.72952595	26.37	2,023.35	-24.78%	-24.87%	-22.62%
03/31/04 - 04/29/04	0.00	76.72952595	26.37	2,023.35	0.00%	-24.85%	-21.93%
04/30/04 - 05/30/04	2,000.00	90.67746198	44.37	4,023.35	0.00%	-21.46%	-20.31%
05/31/04 - 06/29/04	106.45	90.67746198	45.54	4,129.80	2.65%	-16.59%	-10.96%
06/30/04 - 07/30/04	241.57	95.51347256	45.77	4,371.37	5.85%	-8.96%	7.70%
07/31/04 - 08/30/04	219.12	100.30112302	45.77	4,590.48	5.01%	-2.70%	23.65%
08/31/04 - 09/29/04	247.79	100.96934414	47.92	4,838.28	5.40%	3.92%	41.06%
09/30/04 - 10/30/04	0.00	100.96934414	47.92	4,838.28	0.00%	3.83%	39.21%
10/31/04 - 11/29/04	0.00	100.96934414	47.92	4,838.28	0.00%	3.76%	37.63%
11/30/04 - 12/30/04	0.00	100.96934414	47.92	4,838.28	0.00%	3.70%	36.19%
12/31/04 - 12/31/04	0.00	100.96934414	47.92	4,838.28	0.00%	3.69%	36.14%

11/19/2008 17:28:06



Platinum Demo Fund
 12345 S. Expressway M/S 3102
 Dallas, TX 65432
 United States of America



11/19/2008 15:38:50



Platinum Demo Fund
 12345 S. Expressway M/S 3102
 Dallas, TX 65432
 United States of America

Individual Valuation Unit Ledger

March 08, 2002 - December 31, 2004

(DOB) Don Berlusconi

Default

Date	Transaction	Amount	Total Paid In	Total Gain / Loss	Total Capital	Remarks
03/08/02	Beginning balance	0.00	1,790.00	-477.84	1,312.16	
03/13/02	Gains/losses allocation	-268.47	1,790.00	-746.32	1,043.68	Automatically added before break transaction
03/13/02	Deposit	100.00	1,890.00	-746.32	1,143.68	
04/12/02	Deposit	100.00	1,990.00	-746.32	1,243.68	
05/14/02	Deposit	100.00	2,090.00	-746.32	1,343.68	
06/11/02	Deposit	100.00	2,190.00	-746.32	1,443.68	
06/30/02	Gains/losses allocation	-36.54	2,190.00	-782.86	1,407.14	Automatically added at the end of month
07/10/02	Deposit	100.00	2,290.00	-782.86	1,507.14	
07/31/02	Gains/losses allocation	-26.19	2,290.00	-809.06	1,480.94	Automatically added at the end of month
08/12/02	Gains/losses allocation	-16.47	2,290.00	-825.52	1,464.48	Automatically added before break transaction
08/12/02	Deposit	100.00	2,390.00	-825.52	1,564.48	
08/31/02	Gains/losses allocation	-2.10	2,390.00	-827.62	1,562.38	Automatically added at the end of month
09/12/02	Gains/losses allocation	-2.10	2,390.00	-829.72	1,560.28	Automatically added before break transaction
09/12/02	Deposit	100.00	2,490.00	-829.72	1,660.28	
09/30/02	Gains/losses allocation	27.27	2,490.00	-802.45	1,687.55	Automatically added at the end of month
12/31/02	Gains/losses allocation	-26.73	2,490.00	-829.18	1,660.82	Automatically added at the end of month
05/31/03	Gains/losses allocation	150.42	2,490.00	-678.76	1,811.24	Automatically added at the end of month
08/31/03	Gains/losses allocation	-99.55	2,490.00	-778.31	1,711.69	Automatically added at the end of month
10/31/03	Gains/losses allocation	1,165.00	2,490.00	386.69	2,876.69	Automatically added at the end of month
01/01/04	Deposit	1,000.00	3,490.00	386.69	3,876.69	
02/29/04	Gains/losses allocation	-960.77	3,490.00	-574.08	2,915.92	Automatically added at the end of month
05/01/04	Deposit	2,000.00	5,490.00	-574.08	4,915.92	
05/31/04	Gains/losses allocation	130.06	5,490.00	-444.02	5,045.98	Automatically added at the end of month
06/30/04	Gains/losses allocation	24.73	5,490.00	-419.28	5,070.72	Automatically added at the end of month
08/31/04	Gains/losses allocation	238.34	5,490.00	-180.94	5,309.06	Automatically added before break transaction
08/31/04	Mgmt. Fee	13.61	5,490.00	-167.33	5,322.67	Automatically added by scheduler (task ID #11)
08/31/04	Mgmt. Fee	11.35	5,490.00	-155.97	5,334.03	Automatically added by scheduler (task ID #11)
08/31/04	Mgmt. Fee	12.49	5,490.00	-143.48	5,346.52	Automatically added by scheduler (task ID #11)
08/31/04	Mgmt. Fee	10.57	5,490.00	-132.91	5,357.09	Automatically added by scheduler (task ID #11)
Current value as of 12/31/04					5,357.09	

11/19/2008
 15:40:50



Platinum Demo Fund
 12345 S. Expressway M/S 3102
 Dallas, TX 65432
 United States of America

Withdrawal Report

Full withdrawal by **(BRJ) Brito, Jose** on September 11, 2001

Partner's Tax Allocations

Expense	Dividend
-9.70	1.39

Fair Value	702.08	Partner`s	
Units Withdrawn		BasisPrior to	675.82
Current Year	-8.31	Withdrawal	
Earnings/Loss		Less	
Partner`s	667.50	Withdrawal	0.00
Adjusted Basis		Fee	
Less Cash	702.08	Net	702.08
Realized	34.57	Proceeds	
Gain/Loss		Cash	702.08
		Total	
		Distribution	702.08
		at Fair Value	

11/19/2008 15:46:42

**Schedule K-1
(Form 1065)**

2007

Department of the Treasury
Internal Revenue Service

For calendar year 2007, or tax
year beginning _____, 2007
ending _____, 20____

**Partner's Share of Income, Deductions,
Credits, etc.** ▶ See back of form and separate instructions.

Part I Information About the Partnership

A Partnership's employer identification number _____

B Partnership's name, address, city, state, and ZIP code _____

C IRS Center where partnership filed return _____

D Check if this is a publicly traded partnership (PTP)

Part II Information About the Partner

E Partner's identifying number _____

F Partner's name, address, city, state, and ZIP code _____

G General partner or LLC member-manager Limited partner or other LLC member

H Domestic partner Foreign partner

I What type of entity is this partner? _____

J Partner's share of profit, loss, and capital:

	Beginning		Ending	
Profit	_____ %	_____ %	_____ %	_____ %
Loss	_____ %	_____ %	_____ %	_____ %
Capital	_____ %	_____ %	_____ %	_____ %

K Partner's share of liabilities at year end:

Nonrecourse \$ _____

Qualified nonrecourse financing . . . \$ _____

Recourse \$ _____

L Partner's capital account analysis:

Beginning capital account \$ _____

Capital contributed during the year . \$ _____

Current year increase (decrease) . . \$ _____

Withdrawals & distributions . . . \$ (_____)

Ending capital account \$ _____

Tax basis GAAP Section 704(b) book
 Other (explain) _____

Part III Partner's Share of Current Year Income, Deductions, Credits, and Other Items

1	Ordinary business income (loss)	15	Credits
2	Net rental real estate income (loss)		
3	Other net rental income (loss)	16	Foreign transactions
4	Guaranteed payments		
5	Interest income		
6a	Ordinary dividends		
6b	Qualified dividends		
7	Royalties		
8	Net short-term capital gain (loss)		
9a	Net long-term capital gain (loss)	17	Alternative minimum tax (AMT) items
9b	Collectibles (28%) gain (loss)		
9c	Unrecaptured section 1250 gain		
10	Net section 1231 gain (loss)	18	Tax-exempt income and nondeductible expenses
11	Other income (loss)		
		19	Distributions
12	Section 179 deduction		
13	Other deductions	20	Other information
14	Self-employment earnings (loss)		

*See attached statement for additional information.

For IRS Use Only



Platinum Demo Fund
 12345 S. Expressway M/S 3102
 Dallas, TX 65432
 United States of America

Partners Status

November 19, 2008

#	Name	Paid Since 03/08/00	Total Paid	Tax Basis	Unrealized Gain	Total Units	Loss Carry Forward	USD Capital Account	Capital percent	Alloc. percent
1	(DOB) Berlusconi, Don	5,390.00	5,490.00	5,069.19	287.91	111.79640439	0.00	5,357.09	11.18%	11.18%
2	(EVL) Lee, Evelyn	4,270.00	4,270.00	4,669.92	168.36	100.96934414	0.00	4,838.28	10.10%	10.10%
3	(LUM) Maddalino, Lucy	5,580.00	5,680.00	5,015.36	332.61	111.60615005	209.03	5,347.97	11.16%	11.16%
4	(ANMC) McDowell, Andrew	6,960.00	7,060.00	5,953.38	461.78	133.87692121	497.31	6,415.15	13.39%	13.39%
5	(BAM) Mitchell, Barbara	3,850.00	3,850.00	3,969.46	109.96	85.13292458	0.00	4,079.42	8.51%	8.51%
6	(CHM) Murray, Charles	5,130.00	5,230.00	4,840.52	300.76	107.29265393	0.00	5,141.28	10.73%	10.73%
7	(HEP) Peterson, Helen	6,300.00	6,400.00	5,479.11	407.87	122.85457187	377.63	5,886.98	12.29%	12.29%
8	(ROP) Porche, Roxanna	5,110.00	5,210.00	4,737.14	244.88	103.96920232	113.40	4,982.02	10.40%	10.40%
9	(MET) Troy, Melisa	6,070.00	6,170.00	5,506.26	363.82	122.50182752	0.00	5,870.08	12.25%	12.25%
Totals:		48,660.00	49,360.00	45,240.32	2,677.95	1,000.00000000	1,197.38	47,918.27	100.00%	100.00%

11/19/2008 17:07:58

FundCount Sample Reports: Partnership / Shareholders: Partners Account Activity



Platinum Demo Fund
 12345 S. Expressway M/S 3102
 Dallas, TX 65432
 United States of America

Partners Account Activity

June 16, 2001 - December 31, 2004

Partner	Fee class	Beginning Equity	Beginning Units	Beginning NAV	Additions	Withdrawals	Adjusted equity	Adjusted equity, %	Dividend	Expense	LTCG	Mgmt. fee paid	Mgmt. fee received	STCG	Unrealized Gain	W/H	Income Allocation	HWM	Mgmt. Fee	Incentive Fee	Net Profit	Ending Equity	Gross Ending Equity	Ending Units	Capital Percent	Alloc. Percent	Period ROR, %	QTD ROR, %	YTD ROR, %
(ANMC) McDowell, Andrew	DEF	2,487.93	214.6374271511	59131850	4,650.00	0.00	7,137.93	14.37	10.46	-24.60	-686.42	-118.64	-265.58	361.98	0.00	-575.24	6,912.46	-124.85	-22.69	-722.78	6,415.15	6,415.15	133.87692121	13.39	13.39	-15.88	0.00	-14.90	
(BAM) Mitchell, Barbara	DEF	0.00	0.0000000011	59131850	3,850.00	0.00	3,850.00	7.75			-7.99		127.45	109.96	0.00	229.42	3,850.00	0.00	0.00	229.42	4,079.42	4,079.42	85.13292458	8.51	8.51	14.94	0.00	-7.64	
(BRJ) Brito, Jose	ABC	636.48	54.9103035811	59131850	70.00	702.08	4.41	0.01	0.54						0.00	-4.41	0.00	0.00	0.00	-4.41	0.00	0.00	0.00000000	0.00	0.00	-0.67	0.00	0.00	
(CHM) Murray, Charles	ABC	751.82	64.8602999311	59131850	4,500.00	0.00	5,251.82	10.57	4.13	-9.81	-346.00		-33.11	274.26	0.00	-110.54	5,230.00	0.00	0.00	-110.54	5,141.28	5,141.28	107.29265393	10.73	10.73	-4.18	0.00	-10.52	
(DOB) Berlusconi, Don	Unassigned	1,451.42	125.2164033911	59131850	4,080.00	0.00	5,531.42	11.14	5.96	-14.04	-353.71	-13.15	-34.78	235.38	0.00	-222.36	5,490.00	0.00	48.03	-174.33	5,357.09	5,357.09	111.79640439	11.18	11.18	-5.86	0.00	-9.93	
(EVL) Lee, Evelyn	Unassigned	318.50	27.4772535611	59131850	3,950.00	0.00	4,268.50	8.59	1.85	-4.55	-146.70	-8.76	440.45	117.74	0.00	97.31	4,270.00	440.45	32.02	569.78	4,838.28	4,838.28	100.96934414	10.10	10.10	35.21	0.00	3.69	
(HEP) Peterson, Helen	ABC	1,743.54	150.4179019211	59131850	4,700.00	0.00	6,443.54	12.97	8.15	-19.37	-602.98	-108.87	-186.00	352.50	0.00	-421.18	6,264.61	-114.57	-20.82	-556.56	5,886.98	5,886.98	122.85457187	12.29	12.29	-14.42	0.00	-14.27	
(LUM) Maddalino, Lucy	ABC	1,202.32	103.7256259911	59131850	4,500.00	0.00	5,702.32	11.48	5.75	-13.64	-447.88	-98.90	-101.93	302.25	0.00	-231.35	5,557.00	-104.08	-18.92	-354.34	5,347.97	5,347.97	111.60615005	11.16	11.16	-11.35	0.00	-13.48	
(MET) Troy, Melisa	ABC	1,860.38	160.4973713511	59131850	4,380.00	0.00	6,240.38	12.56	7.78	-18.09	-492.89		-145.24	278.14	0.00	-370.30	6,170.00	0.00	0.00	-370.30	5,870.08	5,870.08	122.50182752	12.25	12.25	-10.12	0.00	-11.77	
(ROP) Porche, Roxanna	ABC	1,138.93	98.2574131311	59131850	4,100.00	0.00	5,238.93	10.55	4.81	-11.40	-314.36	-92.13	-49.88	206.06	0.00	-142.33	5,095.42	-96.96	-17.62	-256.91	4,982.02	4,982.02	103.96920232	10.40	10.40	-9.54	0.00	-12.82	
Total:		11,591.321,000.00000000		N/A38,780.00		702.0849,669.24	100.00		49.44	-115.50	-3,398.93	440.45	440.45	-571.33	2,285.35	0.00	-1,750.9748,839.50	0.00	0.00	-1,750.9747,918.2747,918.271,000.00000000	100.00	100.00		100.00	100.00	-6.61	0.00	-10.88	

11/19/2008 17:14:33

FundCount Sample Reports: Partnership / Shareholders: Partners Account Activity with Side Pocket



Platinum Demo Fund
 12345 S. Expressway M/S 3102
 Dallas, TX 65432
 United States of America

Partners Account Activity

March 08, 2000 - December 31, 2004

Portfolio	Partner	Fee class	Beginning Equity	Additions	Withdrawals	Adjusted equity	Adjusted equity, %	Dividend	Expense	Income	LTCG	Mgmt. fee paid	Mgmt. fee received	STCG	Unrealized Gain	W/H	Income Allocation	HWM	Mgmt. Fee	Incentive Fee	Net Profit	Ending Equity	Period ROR, %	QTD ROR, %	YTD ROR, %
Main Pool			0.00	50,560.00	1,387.97	49,172.03	99.39	113.93	-291.50	31.84	-3,398.93	-440.45	440.45	-736.38	2,868.79	0.00	-1,412.25	49,060.38	0.00	0.00	-1,412.25	47,648.13	-6.83	0.00	-13.28
	(ANMC) McDowell, Andrew	DEF	0.00	7,060.00	0.00	7,060.00	14.27	24.13	-66.21	4.97	-808.49	-33.83		-445.15	734.91	0.00	-442.13	6,912.46	-124.85	-22.69	-589.66	6,470.34	-16.14	0.00	-16.90
	(BAM) Mitchell, Barbara	DEF	0.00	3,850.00	0.00	3,850.00	7.78				-8.12			67.12	120.52	0.00	179.52	3,850.00	0.00	0.00	179.52	4,029.52	11.62	0.00	-10.55
	(BRJ) Brito, Jose	ABC	0.00	680.00	702.08	-22.08	-0.04	4.68	-10.61	1.69	85.68			-0.38	-55.74	0.00	25.32	3.25	0.00	0.00	25.32	3.25	22.44	0.00	-19.82
	(BRO) Onghoo, Bruce	ABC	0.00	240.00	231.83	8.17	0.02	1.54		2.13					-11.84	0.00	-8.17	8.17	0.00	0.00	-8.17	0.00	-4.76	0.00	0.00
	(CHM) Murray, Charles	ABC	0.00	5,230.00	0.00	5,230.00	10.57	8.46	-20.92	1.78	-354.75			-59.21	327.34	0.00	-97.30	5,230.00	0.00	0.00	-97.30	5,132.70	-4.78	0.00	-13.01
	(DOB) Berlusconi, Don	Unassigned	0.00	5,490.00	0.00	5,490.00	11.10	13.59	-36.97	3.64	-176.24	-201.24		385.34	-118.90	0.00	-178.82	5,359.21	0.00	48.03	-130.79	5,359.21	-5.58	0.00	-12.40
	(EVL) Lee, Evelyn	Unassigned	0.00	4,270.00	0.00	4,270.00	8.63	1.78	-4.77		-21.54	-134.16	440.45	344.70	-112.14	0.00	41.84	4,784.31	440.45	32.02	514.31	4,784.31	32.53	0.00	0.25
	(HEP) Peterson, Helen	ABC	0.00	6,400.00	0.00	6,400.00	12.94	18.27	-47.23	5.33	-705.20	-29.77		-367.31	645.60	0.00	-344.93	6,264.61	-114.57	-20.82	-480.31	5,919.69	-15.62	0.00	-16.39
	(IDC) Cates, Ida	ABC	0.00	170.00	154.51	15.49	0.03	1.61		1.51					-18.61	0.00	-15.49	15.49	0.00	0.00	-15.49	0.00	-10.08	0.00	0.00
	(JAT) Thornton, James	DEF	0.00	310.00	299.55	10.45	0.02	2.09		2.75					-15.30	0.00	-10.45	10.45	0.00	0.00	-10.45	0.00	-4.54	0.00	0.00
	(LUM) Maddalino, Lucy	ABC	0.00	5,580.00	0.00	5,580.00	11.28	10.25	-28.15	1.86	-522.79	-18.60		-288.52	538.83	0.00	-184.12	5,457.00	-104.08	-18.92	-307.12	5,272.88	-12.85	0.00	-15.66
	(MET) Troy, Melisa	ABC	0.00	6,070.00	0.00	6,070.00	12.27	16.99	-46.59	3.64	-498.83			-138.56	403.14	0.00	-260.21	6,070.00	0.00	0.00	-260.21	5,809.79	-9.14	0.00	-13.96
	(ROP) Porche, Roxanna	ABC	0.00	5,210.00	0.00	5,210.00	10.53	10.53	-30.05	2.53	-388.65	-22.83		-234.41	430.98	0.00	-117.32	5,095.42	-96.96	-17.62	-231.90	4,978.10	-10.94	0.00	-15.19
Side Pocket A			0.00	300.00	0.00	300.00	0.61	4.40							-1,341.00	0.00	-1,336.60	0.00	0.00	0.00	-1,336.60	-1,036.60	0.00	0.00	0.00
	(BRO) Onghoo, Bruce	ABC	0.00	100.00	0.00	100.00	0.20	1.47							-447.00	0.00	-445.53	0.00	0.00	0.00	-445.53	-345.53	0.00	0.00	0.00
	(LUM) Maddalino, Lucy	ABC	0.00	100.00	0.00	100.00	0.20	1.47							-447.00	0.00	-445.53	0.00	0.00	0.00	-445.53	-345.53	0.00	0.00	0.00
	(MET) Troy, Melisa	ABC	0.00	100.00	0.00	100.00	0.20	1.47							-447.00	0.00	-445.53	0.00	0.00	0.00	-445.53	-345.53	0.00	0.00	0.00
Total:			0.00	50,860.00	1,387.97	49,472.03	100.00	118.33	-291.50	31.84	-3,398.93	-440.45	440.45	-736.38	1,527.79	0.00	-2,748.85	49,060.38	0.00	0.00	-2,748.85	46,723.18	-12.94	0.00	-13.57

12/02/2008 17:24:20

FundCount Sample Reports: Partnership / Shareholders: Partners Ac-t Activity (Class, Units, NAV, Performance IRR)



Platinum Demo Fund
 12345 S. Expressway M/S 3102
 Dallas, TX 65432
 United States of America

Partners Account Activity

January 01, 2001 - May 30, 2001

Fee class	Serie	Partner	Beginning Equity	Beginning Units	Beginning NAV	Additions	Withdrawals	Adjusted equity	Adjusted equity, %	Dividend Expense	Unrealized Gain	W/H	Income Allocation	HWM	Mgmt. Incentive Fee	Incentive Fee	Net Profit	Ending Equity	Ending Units	Period ROR, %	QTD ROR, %	YTD ROR, %	
ABC			5,464.42	455.52879446	N/A	2,320.00	0.00	7,784.42	63.85	5.99	-97.65	-539.38	0.00	-631.04	6,870.00	0.00	0.00	-631.04	7,153.38	656.65061009	-9.37	-8.47	-9.37
DEF			2,111.64	176.03196790	N/A	700.00	0.00	2,811.64	23.06	2.28	-36.33	-196.77	0.00	-230.82	2,470.00	0.00	0.00	-230.82	2,580.82	236.90864994	-9.17	-8.47	-9.17
	Base serie	(ANMC) McDowell, Andrew	119.96	10.00000000	N/A	0.00	0.00	119.96	0.98	0.11	-1.70	-9.43	0.00	-11.02	100.00	0.00	0.00	-11.02	108.94	10.00000000	-9.19	-8.28	-9.19
	Serie 1	(ANMC) McDowell, Andrew	239.92	20.00000000	N/A	0.00	0.00	239.92	1.97	0.22	-3.41	-18.86	0.00	-22.04	200.00	0.00	0.00	-22.04	217.87	20.00000000	-9.19	-8.28	-9.19
		(JAT) Thornton, James	179.94	15.00000000	11.99576276	0.00	0.00	179.94	1.48	0.17	-2.55	-14.14	0.00	-16.53	150.00	0.00	0.00	-16.53	163.41	15.00000000	-9.19	-8.28	-9.19
	Serie 2		59.98	5.00000000	11.99576276	0.00	0.00	59.98	0.49	0.06	-0.85	-4.71	0.00	-5.51	50.00	0.00	0.00	-5.51	54.47	5.00000000	-9.19	-8.28	-9.19
	Serie 3		239.86	19.99555654	N/A	0.00	0.00	239.86	1.97	0.22	-3.40	-18.85	0.00	-22.04	200.00	0.00	0.00	-22.04	217.83	19.99555654	-9.19	-8.28	-9.19
	Serie 4	(ANMC) McDowell, Andrew	323.16	26.93913504	N/A	0.00	0.00	323.16	2.65	0.30	-4.59	-25.40	0.00	-29.69	270.00	0.00	0.00	-29.69	293.47	26.93913504	-9.19	-8.28	-9.19
	Serie 5	(ANMC) McDowell, Andrew	178.49	14.87923833	11.99576276	0.00	0.00	178.49	1.46	0.17	-2.53	-14.03	0.00	-16.40	150.00	0.00	0.00	-16.40	162.09	14.87923833	-9.19	-8.28	-9.19
	Serie 6	(ANMC) McDowell, Andrew	178.29	14.86303348	11.99576276	0.00	0.00	178.29	1.46	0.17	-2.53	-14.01	0.00	-16.38	150.00	0.00	0.00	-16.38	161.91	14.86303348	-9.19	-8.28	-9.19
	Serie 7	(ANMC) McDowell, Andrew	185.66	15.47753517	11.99576276	0.00	0.00	185.66	1.52	0.17	-2.64	-14.59	0.00	-17.06	150.00	0.00	0.00	-17.06	168.61	15.47753517	-9.19	-8.28	-9.19
	Serie 8	(ANMC) McDowell, Andrew	195.92	16.33209613	11.99576276	0.00	0.00	195.92	1.61	0.18	-2.78	-15.40	0.00	-18.00	150.00	0.00	0.00	-18.00	177.92	16.33209613	-9.19	-8.28	-9.19
	Serie 9	(ANMC) McDowell, Andrew	185.51	15.46496344	11.99576276	0.00	0.00	185.51	1.52	0.17	-2.63	-14.58	0.00	-17.04	150.00	0.00	0.00	-17.04	168.47	15.46496344	-9.19	-8.28	-9.19
	Serie 10	(ANMC) McDowell, Andrew	264.87	22.08040977	11.99576276	0.00	0.00	264.87	2.17	0.25	-3.76	-20.82	0.00	-24.33	250.00	0.00	0.00	-24.33	240.54	22.08040977	-9.19	-8.28	-9.19
	Serie 11	(ANMC) McDowell, Andrew	0.00	0.00000000	11.99576276	200.00	0.00	200.00	1.64	0.20	-3.11	2.17	0.00	-0.74	200.00	0.00	0.00	-0.74	199.26	18.29141650	-0.37	-8.28	-0.37
	Serie 12	(ANMC) McDowell, Andrew	0.00	0.00000000	11.99576276	100.00	0.00	100.00	0.82	0.06	-1.35	-2.18	0.00	-3.47	100.00	0.00	0.00	-3.47	96.53	8.86151817	-3.47	-8.28	-3.47
	Serie 13	(ANMC) McDowell, Andrew	0.00	0.00000000	11.99576276	150.00	0.00	150.00	1.23	0.03	-1.90	-12.54	0.00	-14.41	150.00	0.00	0.00	-14.41	135.59	12.44685520	-9.60	-8.28	-9.60
	Serie 14	(ANMC) McDowell, Andrew	0.00	0.00000000	11.99576276	100.00	0.00	100.00	0.82	0.03	0.02	-18.24	0.00	-18.22	150.00	0.00	0.00	-18.22	131.78	12.09730095	-12.14	-12.14	-12.14
GHI			975.51	81.32154184	N/A	620.00	0.00	1,595.51	13.09	1.11	-18.02	-98.29	0.00	-115.20	1,430.00	0.00	0.00	-115.20	1,480.31	135.88663972	-9.13	-8.20	-9.13
Total:			8,551.57	712.88230420	N/A	3,640.00	0.00	12,191.57	100.00	9.38	-152.00	-834.44	0.00	-977.06	10,770.00	0.00	0.00	-977.06	11,214.51	1,029.44589975	-9.29	-8.44	-9.29

11/24/2008 15:55:27

FundCount Sample Reports: Partnership / Shareholders: Partners Information



Partner Information

First name	Last name	SSN	E-Mail	Work phone	Home phone	Street	City	PO Box	ZIP	State	Country	Partner code	Mgmt. fee rcv. %	Incent. fee rcv. %	Partner type	Entity type	Master partner	Active	Join date	Remarks	MF class	
Don	Berlusconi	444-88-5555	don@berlusconi.com	(333) 888-8888	(123) 866-1111	12345 North 53th Ave	San Jose		88999	California	United States of America	DOB		0.6	General partner	Individual	Berlusconi, Don	Yes	03/08/2000			
Jose	Brito		jose@brito.net	(333) 888-8888	(222) 111-1111	45 North 53th Ave	Los Angeles		88999	California	United States of America	BRU			Limited partner	Individual	Brito, Jose	No	05/10/2000		ABC	
Ida	Cates		cates@ida.biz	(333) 888-8888	(222) 111-1111	12345 North 53th Ave	Suncity		88999	Texas	United States of America	IDC			Limited partner	Individual	Cates, Ida	No	03/08/2000		ABC	
Evelyn	Lee		evelyn@lee.info	(333) 888-8888	(222) 111-1111	12345 North 53th Ave	Suncity		88999	Newfoundland	Canada	EVL		1.0	0.4	General partner	Individual	Lee, Evelyn	Yes	05/09/2001		
Lucy	Maddalino		lucy@maddalino.com	(333) 888-8888	(222) 111-1111	12345 North 53th Ave	Suncity		88999	Newfoundland	Canada	LJUM			Limited partner	Individual	Maddalino, Lucy	Yes	03/08/2000	Prefers roses	ABC	
Andrew	McDowell	777-86-9999	andy@mcowell.gov	(333) 888-8888	(222) 111-1111	2691 East Oak Ave.	Suncity	2347	88999	Newfoundland	Canada	ANMC			Limited liability company member	Partnership	McDowell, Andrew	Yes	03/08/2000		DEF	
Barbara	Mitchell		barbara@mitchell.ca	(333) 888-8899	(555) 111-8811	12345 North 53th Ave	London		12345		United Kingdom (Great Britain)	BAM			Limited partner	Individual	Mitchell, Barbara	Yes	02/12/2002		DEF	
Charles	Murray		charles@murray.us	(333) 888-8888	(222) 111-1111	12345 North 53th Ave	Suncity		88999	Oregon	United States of America	CHM			Limited partner	Individual	Murray, Charles	Yes	03/08/2000		ABC	
Bruce	Onghoo		bruce@onghoo.com	(333) 888-8888	(222) 111-1111	12345 North 53th Ave	Suncity		88999	Georgia	United States of America	BRO			Limited partner	Individual	Onghoo, Bruce	No	03/08/2000		ABC	
Helen	Peterson	444-88-5555	helen@peterson.com	(333) 888-8888	(222) 111-1111	12345 North 53th Ave	Suncity		88999	Delaware	United States of America	HEP			Limited partner	Individual	Peterson, Helen	Yes	03/08/2000	Referred by Jack	ABC	
Roxanna	Porche		roxanna@yahoo.com	(333) 888-8888	(222) 111-1111	12345 North 53th Ave	Suncity		88999	Pennsylvania	United States of America	RCP			Limited partner	Individual	Porche, Roxanna	Yes	03/08/2000		ABC	
James	Thornton		james@lycos.com	(333) 888-8888	(222) 111-1111	12345 North 53th Ave	San Carlos		88999		Dominican Republic	JAT			Limited partner	Individual	Thornton, James	No	03/08/2000		DEF	
Melisa	Troy			(333) 888-8888	(222) 111-1111	12345 North 53th Ave	Suncity	8976	88999	Ohio	United States of America	MET			Limited partner	Individual	Troy, Melisa	Yes	03/08/2000		ABC	

11/19/2008 13:51:51



Platinum Demo Fund
 12345 S. Expressway M/S 3102
 Dallas, TX 65432
 United States of America

Time Weighted Return Details

Net return (net of management and incentive fees)

Partner	03/08/00	04/05/00	05/10/00	06/14/00	07/14/00	08/14/00	09/13/00	09/13/00	10/13/00
	04/05/00	05/10/00	06/14/00	07/14/00	08/14/00	09/13/00	09/13/00	10/13/00	10/13/00
<u>(ANMC) McDowell, Andrew</u>	0.00	0.02	0.20	0.58	0.11	-3.97	0.00	-5.74	0.00
<u>(CHM) Murray, Charles</u>	0.00	0.02	0.20	0.58	0.11	-3.97	0.00	-5.74	0.00
Fund:	0.00	0.02	0.20	0.58	0.11	-3.97	0.00	-5.74	0.00

Partner	10/13/00	11/09/00	12/16/00	01/10/01	02/08/01	03/14/01	04/11/01	05/09/01	06/13/01
	11/09/00	12/16/00	01/10/01	02/08/01	03/14/01	04/11/01	05/09/01	06/13/01	08/15/01
<u>(ANMC) McDowell, Andrew</u>	6.19	18.19	-3.65	3.41	7.17	3.03	-12.67	-1.25	-0.59
<u>(CHM) Murray, Charles</u>	6.19	18.19	-3.65	3.41	7.17	3.03	-12.67	-1.25	-0.59
Fund:	6.19	18.19	-3.65	3.41	7.17	3.03	-12.67	-1.25	-0.59

Partner	08/15/01	09/11/01	09/11/01	09/12/01	10/17/01	11/14/01	12/12/01	01/09/02	02/12/02
	09/11/01	09/11/01	09/12/01	10/17/01	11/14/01	12/12/01	01/09/02	02/12/02	03/13/02
<u>(ANMC) McDowell, Andrew</u>	-0.10	0.00	0.00	-0.57	-0.04	-7.63	-18.65	-4.87	-20.83
<u>(CHM) Murray, Charles</u>	-0.10	0.00	0.00	-0.57	-0.04	-7.63	-18.65	-4.87	-20.83
Fund:	-0.10	0.00	0.00	-0.57	-0.04	-7.63	-18.65	-4.87	-20.83

Partner	03/13/02	04/12/02	05/14/02	06/11/02	07/10/02	08/12/02	09/12/02	01/01/04	05/01/04
	04/12/02	05/14/02	06/11/02	07/10/02	08/12/02	09/12/02	01/01/04	05/01/04	07/01/04
<u>(ANMC) McDowell, Andrew</u>	0.00	0.00	0.00	-2.53	-2.83	-0.27	73.26	-24.78	2.12
<u>(CHM) Murray, Charles</u>	0.00	0.00	0.00	-2.53	-2.83	-0.27	73.26	-24.78	3.15
Fund:	0.00	0.00	0.00	-2.53	-2.83	-0.27	73.26	-24.78	3.15

Partner	07/01/04	07/31/04	08/01/04	08/31/04	Total
	07/31/04	08/01/04	08/31/04	12/31/04	
<u>(ANMC) McDowell, Andrew</u>	0.00	-1.00	4.33	0.00	-21.11
<u>(CHM) Murray, Charles</u>	0.00	0.00	4.70	0.00	-19.23
Fund:	0.00	0.00	4.70	0.00	-19.23

11/19/2008 17:18:03

FundCount Sample Reports: Partnership / Shareholders: Allocation Percentages



Platinum Demo Fund
 12345 S. Expressway M/S 3102
 Dallas, TX 65432
 United States of America

Allocation Percentages

August 01, 2004 - August 31, 2004

Partner	Beginning Capital	Capital Percent	Alloc. Percent	Unrealized Gain	LTCG	Mgmt. fee paid	STCG	Unrealized Gain	LTCG	Mgmt. fee paid	STCG	W/H	Income Allocation	Mgmt. Fee	Incentive Fee	Net Profit	Additions	Withdrawals	Ending Equity	
<u>(ANMC)</u> <u>McDowell, Andrew</u>	6,148.82	13.435044	13.435044	90.81	62.93	6.21	106.37						0.00	289.02	0.00	22.69	266.33	0.00	0.00	6,415.1
<u>(BAM)</u> <u>Mitchell, Barbara</u>	3,896.28	8.513292	8.513292	7.06	25.77	0.00	150.32						0.00	183.14	0.00	0.00	183.14	0.00	0.00	4,079.4
<u>(CHM)</u> <u>Murray, Charles</u>	4,910.47	10.729265	10.729265	47.22	44.63	0.00	138.96						0.00	230.81	0.00	0.00	230.81	0.00	0.00	5,141.2
<u>(DOB)</u> <u>Berlusconi, Don</u>	5,070.72	11.079407	11.079407	71.69	60.16	-13.15	167.68	2.75	2.61	-2.89	8.11	0.00	238.34	0.00	-48.03	286.37	0.00	0.00	5,357.0	
<u>(EVL) Lee, Evelyn</u>	4,590.48	10.030112	10.030112	30.03	39.28	-8.76	187.25	1.83	1.74	-1.93	5.40	0.00	215.77	0.00	-32.02	247.79	0.00	0.00	4,838.2	
<u>(HEP)</u> <u>Peterson, Helen</u>	5,642.57	12.328906	12.328906	72.96	53.76	5.70	111.99						0.00	265.22	0.00	20.82	244.40	0.00	0.00	5,886.5
<u>(LUM)</u> <u>Maddalino, Lucy</u>	5,125.95	11.200099	11.200099	53.91	45.23	5.18	117.71						0.00	240.94	0.00	18.92	222.02	0.00	0.00	5,347.5
<u>(MET)</u> <u>Troy, Melisa</u>	5,606.54	12.250183	12.250183	75.34	57.03	0.00	131.17						0.00	263.53	0.00	0.00	263.53	0.00	0.00	5,870.0
<u>(ROP)</u> <u>Porche, Roxanna</u>	4,775.19	10.433691	10.433691	41.26	39.14	4.82	121.60	-4.58	-4.35	4.82	-13.51	0.00	224.45	0.00	17.62	206.83	0.00	0.00	4,982.0	
Total:	45,767.03	100.000000	100.000000	490.27	427.92	0.00	1,233.05	0.00	0.00	0.00	0.00	0.00	2,151.24	0.00	0.00	2,151.24	0.00	0.00	47,918.2	

11/19/2008 14:07:09



Platinum Demo Fund
12345 S. Expressway M/S 3102
Dallas, TX 65432
United States of America

(BVII) Broadview Inst Hot Issue Gains Allocation

December 31, 2007 - January 31, 2008

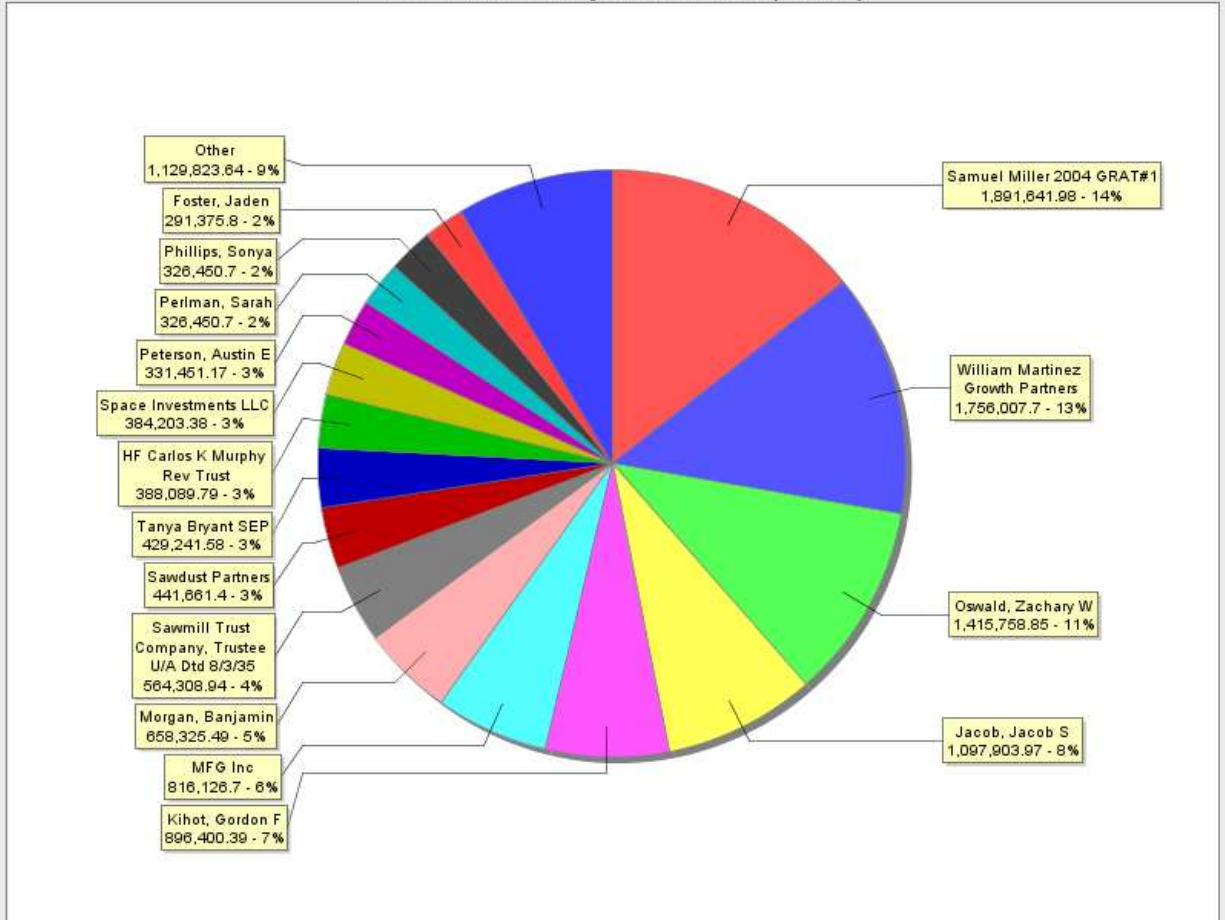
	Beginning Equity	Additions	%	Restricted	% Non-restricted	% Restricted	Other gain/loss	Unrealized Gain	Original Allocation	Adjustment
Andrew T IRA	27,760.66		0.21	No	0.21		-0.05	-0.38	-0.44	0.00
Baily, Michael G	57,423.53		0.43	No	0.43		-0.11	-0.79	-0.90	0.01
Butterfly, Michael	39,344.53		0.29	No	0.29		-0.07	-0.54	-0.62	0.00
Candy III, Tyler B	35,474.62		0.27	Yes		0.27	-0.07	-0.53	-0.56	-0.04
Chase Torres Family LP	197,274.85		1.48	No	1.48		-0.37	-2.72	-3.11	0.02
Conor M Christianson IRA	113,208.45		0.85	No	0.85		-0.21	-1.56	-1.78	0.01
Control Account	2,003.37		0.02	No	0.02		0.00	-0.03	-0.03	0.00
Foster, Jaden	193,083.43	100,000.00	2.20	No	2.20		-0.55	-4.03	-4.61	0.03
Gray, Kyle J	0.00	125,000.00	0.94	No	0.94		-0.23	-1.72	-1.97	0.01
HF Carlos K Murphy Rev Trust	390,364.21		2.93	No	2.93		-0.73	-5.37	-6.15	0.05
Jacob, Jacob S	1,104,338.30		8.28	No	8.28		-2.05	-15.20	-17.39	0.13
Kihot, Gordon F	932,549.80		6.99	No	6.99		-1.73	-12.84	-14.68	0.11
Liam Hayes IRA	39,707.65		0.30	No	0.30		-0.07	-0.55	-0.63	0.00
MFG Inc	820,909.66		6.15	Yes		6.15	-1.65	-12.22	-12.92	-0.95
Morgan, Benjamin	662,183.65		4.96	No	4.96		-1.23	-9.11	-10.42	0.08
Oswald, Zachary W	1,424,055.99		10.68	No	10.68		-2.65	-19.60	-22.42	0.17
Owen Funeral Home Inc	26,638.67		0.20	No	0.20		-0.05	-0.37	-0.42	0.00
Perlman, Sarah	328,363.88		2.46	No	2.46		-0.61	-4.52	-5.17	0.04
Peterson, Austin E	333,393.66		2.50	No	2.50		-0.62	-4.59	-5.25	0.04
Phillips, Sonya	328,363.88		2.46	No	2.46		-0.61	-4.52	-5.17	0.04
Robinson, Rayan G	63,043.41		0.47	No	0.47		-0.12	-0.87	-0.99	0.01
Samuel Miller 2004 GRAT#1	1,902,728.06		14.26	No	14.26		-3.54	-26.19	-29.96	0.23
Sawdust Partners	444,249.78		3.33	No	3.33		-0.83	-6.11	-6.99	0.05
Sawmill Trust Company, Trustee U/A Dtd 8/3/35	567,616.11		4.26	No	4.26		-1.06	-7.81	-8.94	0.07
Silor, Gabriel	154,142.32		1.16	No	1.16		-0.29	-2.12	-2.43	0.02
Space Investments LLC	386,455.03		2.90	Yes		2.90	-0.78	-5.75	-6.08	-0.45
Tanya Bryant SEP	446,551.73		3.35	No	3.35		-0.83	-6.15	-7.03	0.05
Thomas, Noah	166,696.83		1.25	No	1.25		-0.31	-2.29	-2.62	0.02
William Martinez Growth Partners	1,826,822.75		13.70	No	13.70		-3.40	-25.15	-28.76	0.22
Xavier Butler IRA	99,305.66		0.74	No	0.74		-0.18	-1.37	-1.56	0.01
Total	13,339,054.47	225,000.00	100.00		90.68	9.32	-25.00	-185.00	-210.00	0.00
Total Non-restricted	11,871,215.16									
Total Restricted	1,242,839.31									
Total gain/loss									-210.00	

11/19/2008 17:24:15



Platinum Demo Fund
 12345 S. Expressway M/S 3102
 Dallas, TX 65432
 United States of America

Partner ownership on 01/31/08 (Value)



- Samuel Miller 2004 GRAT#1 ● William Martinez Growth Partners ● Oswald, Zachary W ● Jacob, Jacob S ● Kihot, Gordon F ● MFG Inc
- Morgan, Benjamin ● Sawmill Trust Company, Trustee U/A Dtd 8/3/35 ● Sawdust Partners ● Tanya Bryant SEP
- HF Carlos K Murphy Rev Trust ● Space Investments LLC ● Peterson, Austin E ● Perlman, Sarah ● Phillips, Sonya ● Foster, Jaden ● Other

11/19/2008 15:20:39

Form **1065**
Department of the Treasury
Internal Revenue Service

U.S. Return of Partnership Income

OMB No. 1545-0099

For calendar year 2007, or tax year beginning, 2007, ending, 20.....
▶ See separate instructions.

2007

A Principal business activity	Use the IRS label. Otherwise, print or type.	Name of partnership	D Employer identification number
B Principal product or service		Number, street, and room or suite no. If a P.O. box, see the instructions.	E Date business started
C Business code number		City or town, state, and ZIP code	F Total assets (see the instructions) \$

- G** Check applicable boxes: (1) Initial return (2) Final return (3) Name change (4) Address change (5) Amended return
- H** Check accounting method: (1) Cash (2) Accrual (3) Other (specify) ▶
- I** Number of Schedules K-1. Attach one for each person who was a partner at any time during the tax year ▶
- J** Check if Schedule M-3 attached.

Caution. Include **only** trade or business income and expenses on lines 1a through 22 below. See the instructions for more information.

Income	1a Gross receipts or sales	1a			
	b Less returns and allowances	1b			1c
	2 Cost of goods sold (Schedule A, line 8)				2
	3 Gross profit. Subtract line 2 from line 1c				3
	4 Ordinary income (loss) from other partnerships, estates, and trusts (attach statement)				4
	5 Net farm profit (loss) (attach Schedule F (Form 1040))				5
	6 Net gain (loss) from Form 4797, Part II, line 17 (attach Form 4797)				6
	7 Other income (loss) (attach statement)				7
8 Total income (loss). Combine lines 3 through 7				8	
Deductions <small>(see the instructions for limitations)</small>	9 Salaries and wages (other than to partners) (less employment credits)				9
	10 Guaranteed payments to partners				10
	11 Repairs and maintenance				11
	12 Bad debts				12
	13 Rent				13
	14 Taxes and licenses				14
	15 Interest				15
	16a Depreciation (if required, attach Form 4562)	16a			
	b Less depreciation reported on Schedule A and elsewhere on return	16b			16c
	17 Depletion (Do not deduct oil and gas depletion.)				17
	18 Retirement plans, etc.				18
19 Employee benefit programs				19	
20 Other deductions (attach statement)				20	
21 Total deductions. Add the amounts shown in the far right column for lines 9 through 20				21	
22 Ordinary business income (loss). Subtract line 21 from line 8				22	

Sign Here

Under penalties of perjury, I declare that I have examined this return, including accompanying schedules and statements, and to the best of my knowledge and belief, it is true, correct, and complete. Declaration of preparer (other than general partner or limited liability company member manager) is based on all information of which preparer has any knowledge.

▶ _____ ▶ _____
Signature of general partner or limited liability company member manager Date

May the IRS discuss this return with the preparer shown below (see instructions)? Yes No

Paid Preparer's Use Only	Preparer's signature	Date	Check if self-employed <input type="checkbox"/>	Preparer's SSN or PTIN
	Firm's name (or yours if self-employed), address, and ZIP code ▶ _____	EIN ▶ _____	Phone no. () _____	

Schedule A Cost of Goods Sold (see the instructions)

1	Inventory at beginning of year	1		
2	Purchases less cost of items withdrawn for personal use	2		
3	Cost of labor	3		
4	Additional section 263A costs (attach statement)	4		
5	Other costs (attach statement)	5		
6	Total. Add lines 1 through 5	6		
7	Inventory at end of year	7		
8	Cost of goods sold. Subtract line 7 from line 6. Enter here and on page 1, line 2	8		

9a Check all methods used for valuing closing inventory:

- (i) Cost as described in Regulations section 1.471-3
- (ii) Lower of cost or market as described in Regulations section 1.471-4
- (iii) Other (specify method used and attach explanation) ▶

b Check this box if there was a writedown of "subnormal" goods as described in Regulations section 1.471-2(c) . . . ▶

c Check this box if the LIFO inventory method was adopted this tax year for any goods (if checked, attach Form 970) ▶

d Do the rules of section 263A (for property produced or acquired for resale) apply to the partnership? . . . Yes No

e Was there any change in determining quantities, cost, or valuations between opening and closing inventory? Yes No

If "Yes," attach explanation.

Schedule B Other Information

		Yes	No
1	What type of entity is filing this return? Check the applicable box:		
a	<input type="checkbox"/> Domestic general partnership		
b	<input checked="" type="checkbox"/> Domestic limited partnership		
c	<input type="checkbox"/> Domestic limited liability company		
d	<input type="checkbox"/> Domestic limited liability partnership		
e	<input type="checkbox"/> Foreign partnership		
f	<input type="checkbox"/> Other ▶		
2	Are any partners in this partnership also partnerships?		✓
3	During the partnership's tax year, did the partnership own any interest in another partnership or in any foreign entity that was disregarded as an entity separate from its owner under Regulations section 301.7701-2 and 301.7701-3? If "Yes," see instructions for required attachment		✓
4	Did the partnership file Form 8893, Election of Partnership Level Tax Treatment, or an election statement under section 6231(a)(1)(B)(ii) for partnership-level tax treatment, that is in effect for this tax year? See Form 8893 for more details		✓
5	Does this partnership meet all three of the following requirements?		
a	The partnership's total receipts for the tax year were less than \$250,000;		
b	The partnership's total assets at the end of the tax year were less than \$600,000; and		
c	Schedules K-1 are filed with the return and furnished to the partners on or before the due date (including extensions) for the partnership return		✓
	If "Yes," the partnership is not required to complete Schedules L, M-1, and M-2; Item F on page 1 of Form 1065; or Item L on Schedule K-1.		
6	Does this partnership have any foreign partners? If "Yes," the partnership may have to file Forms 8804, 8805 and 8813. See the instructions		✓
7	Is this partnership a publicly traded partnership as defined in section 469(k)(2)?		✓
8	Has this partnership filed, or is it required to file, a return under section 6111 to provide information on any reportable transaction?		✓
9	At any time during calendar year 2007, did the partnership have an interest in or a signature or other authority over a financial account in a foreign country (such as a bank account, securities account, or other financial account)? See the instructions for exceptions and filing requirements for Form TD F 90-22.1. If "Yes," enter the name of the foreign country. ▶		✓
10	During the tax year, did the partnership receive a distribution from, or was it the grantor of, or transferor to, a foreign trust? If "Yes," the partnership may have to file Form 3520. See the instructions		✓
11	Was there a distribution of property or a transfer (for example, by sale or death) of a partnership interest during the tax year? If "Yes," you may elect to adjust the basis of the partnership's assets under section 754 by attaching the statement described under Elections Made By the Partnership in the instructions		✓
12	Enter the number of Forms 8865, Return of U.S. Persons With Respect to Certain Foreign Partnerships, attached to this return ▶		

Designation of Tax Matters Partner (see the instructions)

Enter below the general partner designated as the tax matters partner (TMP) for the tax year of this return:

Name of designated TMP ▶	Identifying number of TMP ▶
Address of designated TMP ▶	

Schedule K Partners' Distributive Share Items		Total amount	
Income (Loss)	1 Ordinary business income (loss) (page 1, line 22)	1	
	2 Net rental real estate income (loss) (attach Form 8825)	2	
	3a Other gross rental income (loss)	3a	
	b Expenses from other rental activities (attach statement)	3b	
	c Other net rental income (loss). Subtract line 3b from line 3a	3c	
	4 Guaranteed payments	4	
	5 Interest income	5	
	6 Dividends: a Ordinary dividends	6a	
	b Qualified dividends	6b	
	7 Royalties	7	
	8 Net short-term capital gain (loss) (attach Schedule D (Form 1065))	8	
Deductions	9a Net long-term capital gain (loss) (attach Schedule D (Form 1065))	9a	
	b Collectibles (28%) gain (loss)	9b	
	c Unrecaptured section 1250 gain (attach statement)	9c	
	10 Net section 1231 gain (loss) (attach Form 4797)	10	
	11 Other income (loss) (see instructions) Type ▶	11	
Self-Employment	12 Section 179 deduction (attach Form 4562)	12	
	13a Contributions	13a	
	b Investment interest expense	13b	
	c Section 59(e)(2) expenditures: (1) Type ▶ (2) Amount ▶	13c(2)	
Credits	d Other deductions (see instructions) Type ▶	13d	
	14a Net earnings (loss) from self-employment	14a	
	b Gross farming or fishing income	14b	
	c Gross nonfarm income	14c	
	15a Low-income housing credit (section 42(j)(5))	15a	
	b Low-income housing credit (other)	15b	
Foreign Transactions	c Qualified rehabilitation expenditures (rental real estate) (attach Form 3468)	15c	
	d Other rental real estate credits (see instructions) Type ▶	15d	
	e Other rental credits (see instructions) Type ▶	15e	
	f Other credits (see instructions) Type ▶	15f	
	16a Name of country or U.S. possession ▶	16a	
	b Gross income from all sources	16b	
	c Gross income sourced at partner level	16c	
	d Passive category ▶ e General category ▶ f Other ▶	16f	
	Deductions allocated and apportioned at partner level		
	g Interest expense ▶ h Other ▶	16h	
Deductions allocated and apportioned at partnership level to foreign source income			
i Passive category ▶ j General category ▶ k Other ▶	16k		
l Total foreign taxes (check one): ▶ Paid <input type="checkbox"/> Accrued <input type="checkbox"/>	16l		
m Reduction in taxes available for credit (attach statement)	16m		
n Other foreign tax information (attach statement)			
Alternative Minimum Tax (AMT) Items	17a Post-1986 depreciation adjustment	17a	
	b Adjusted gain or loss	17b	
	c Depletion (other than oil and gas)	17c	
	d Oil, gas, and geothermal properties—gross income	17d	
	e Oil, gas, and geothermal properties—deductions	17e	
	f Other AMT items (attach statement)	17f	
Other Information	18a Tax-exempt interest income	18a	
	b Other tax-exempt income	18b	
	c Nondeductible expenses	18c	
	19a Distributions of cash and marketable securities	19a	
	b Distributions of other property	19b	
	20a Investment income	20a	
b Investment expenses	20b		
c Other items and amounts (attach statement)			

Analysis of Net Income (Loss)

1 Net income (loss). Combine Schedule K, lines 1 through 11. From the result, subtract the sum of Schedule K, lines 12 through 13d, and 16l						1
2 Analysis by partner type:	(i) Corporate	(ii) Individual (active)	(iii) Individual (passive)	(iv) Partnership	(v) Exempt organization	(vi) Nominee/Other
a General partners						
b Limited partners						

Schedule L	Balance Sheets per Books	Beginning of tax year		End of tax year	
		(a)	(b)	(c)	(d)
Assets					
1	Cash				
2a	Trade notes and accounts receivable				
b	Less allowance for bad debts				
3	Inventories				
4	U.S. government obligations				
5	Tax-exempt securities				
6	Other current assets (attach statement)				
7	Mortgage and real estate loans				
8	Other investments (attach statement)				
9a	Buildings and other depreciable assets				
b	Less accumulated depreciation				
10a	Depletable assets				
b	Less accumulated depletion				
11	Land (net of any amortization)				
12a	Intangible assets (amortizable only)				
b	Less accumulated amortization				
13	Other assets (attach statement)				
14	Total assets				
Liabilities and Capital					
15	Accounts payable				
16	Mortgages, notes, bonds payable in less than 1 year				
17	Other current liabilities (attach statement)				
18	All nonrecourse loans				
19	Mortgages, notes, bonds payable in 1 year or more				
20	Other liabilities (attach statement)				
21	Partners' capital accounts				
22	Total liabilities and capital				

Schedule M-1 Reconciliation of Income (Loss) per Books With Income (Loss) per Return

Note. Schedule M-3 may be required instead of Schedule M-1 (see instructions).

1	Net income (loss) per books		6	Income recorded on books this year not included on Schedule K, lines 1 through 11 (itemize):	
2	Income included on Schedule K, lines 1, 2, 3c, 5, 6a, 7, 8, 9a, 10, and 11, not recorded on books this year (itemize):		a	Tax-exempt interest \$	
3	Guaranteed payments (other than health insurance)		7	Deductions included on Schedule K, lines 1 through 13d, and 16l, not charged against book income this year (itemize):	
4	Expenses recorded on books this year not included on Schedule K, lines 1 through 13d, and 16l (itemize):		a	Depreciation \$	
a	Depreciation \$				
b	Travel and entertainment \$		8	Add lines 6 and 7	
5	Add lines 1 through 4		9	Income (loss) (Analysis of Net Income (Loss), line 1). Subtract line 8 from line 5	

Schedule M-2 Analysis of Partners' Capital Accounts

1	Balance at beginning of year		6	Distributions: a Cash	
2	Capital contributed: a Cash		b	Property	
	b Property		7	Other decreases (itemize):	
3	Net income (loss) per books				
4	Other increases (itemize):		8	Add lines 6 and 7	
5	Add lines 1 through 4		9	Balance at end of year. Subtract line 8 from line 5	



Platinum Demo Fund
 12345 S. Expressway M/S 3102
 Dallas, TX 65432
 United States of America

Contract note

Porche, Roxanna
 12345 North 53th Ave
 Suncity, PA 88999
 United States of America

Dear Roxanna,

We hereby confirm ...

Execute date	Beginning			Subscription / Redemption				Ending	
	NAV	Capital	Units	Amount	Fee	Net proceeds	Units	Capital	Units
09/12/02	49.155585	1,826.58	37.15922416	100.00	0.00	100.00	1.32965578	1,926.58	38.48887995
09/12/02	50.055585	1,926.58	38.48887995	25,000.00	0.00	25,000.00	320.26634560	26,926.58	358.75522554

Kind regards,
 Platinum Demo Fund
 12345 S. Expressway
 Suit M/S 3102
 Dallas, TX 65432
 United States of America
 Phone: 745.653.9874
 Cell: 745.325.1237

11/19/2008 19:27:05



Platinum Demo Fund
 12345 S. Expressway M/S 3102
 Dallas, TX 65432
 United States of America

Cash Contributions and Withdrawals

May 31, 2005 - June 26, 2008

Partner/Portfolios	12/31/07	01/01/08	Total
Andrew T IRA	25,000.00		25,000.00
Baily, Michael G	50,000.00		50,000.00
Butterfly, Michael	25,000.00		25,000.00
Candy III, Tyler B	31,956.00		31,956.00
Chase Torres Familly LP	175,000.00		175,000.00
Conor M Christianson IRA	57,000.00		57,000.00
Control Account	1,000.00		1,000.00
Foster, Jaden	100,000.00	100,000.00	200,000.00
Gray, Kyle J		125,000.00	125,000.00
HF Carlos K Murphy Rev Trust	250,000.00		250,000.00
Jacob, Jacob S	750,000.00		750,000.00
Kihot, Gordon F	335,982.00		335,982.00
Liam Hayes IRA	20,000.00		20,000.00
MFG Inc	500,000.00		500,000.00
Morgan, Benjamin	499,715.21		499,715.21
Oswald, Zachary W	1,178,717.00		1,178,717.00
Owen Funeral Home Inc	24,181.00		24,181.00
Perlman, Sarah	200,000.00		200,000.00
Peterson, Austin E	200,000.00		200,000.00
Phillips, Sonya	200,000.00		200,000.00
Robinson, Rayan G	55,925.00		55,925.00
Samuel Miller 2004 GRAT#1	1,570,853.00		1,570,853.00
Sawdust Partners	400,186.00		400,186.00
Sawmill Trust Company, Trustee U/A Dtd 8/3/35	511,316.00		511,316.00
Silor, Gabriel	99,000.00		99,000.00
Space Investments LLC	250,000.00		250,000.00
Tanya Bryant SEP	224,837.00		224,837.00
Thomas, Noah	100,000.00		100,000.00
William Martinez Growth Partners	801,065.00		801,065.00
Xavier Butler IRA	50,000.00		50,000.00
Totals:	8,686,733.21	225,000.00	8,911,733.21

11/19/2008 19:29:32



Platinum Demo Fund
 12345 S. Expressway M/S 3102
 Dallas, TX 65432
 United States of America

Management Fee Payment History

March 08, 2000 - November 19, 2004

Partner Name	07/01/04	08/01/04	08/31/04	Total
(EVL) Lee, Evelyn	▶ (221.33)	▶ (219.12)	▶ (32.02)	▶ (440.45) ▶ (32.02)
(LUM) Maddalino, Lucy	▶ 52.30	▶ 51.78	▶ 18.92	▶ 104.08 ▶ 18.92
(ANMC) McDowell, Andrew	▶ 62.74	▶ 62.11	▶ 22.69	▶ 124.85 ▶ 22.69
(BAM) Mitchell, Barbara				
(HEP) Peterson, Helen	▶ 57.57	▶ 57.00	▶ 20.82	▶ 114.57 ▶ 20.82
(ROP) Porche, Roxanna	▶ 48.72	▶ 48.23	▶ 17.62	▶ 96.96 ▶ 17.62
(MET) Troy, Melisa				
Total:	▶ 0.00	▶ 0.00	▶ 48.03	▶ 0.00 ▶ 48.03

▶ - Management Fee
 ▶ - Incentive Fee

11/19/2008 19:08:06



Platinum Demo Fund
 12345 S. Expressway M/S 3102
 Dallas, TX 65432
 United States of America

Outstanding Commitments for Investors

November 19, 2008

Partner Name	09/12/02	01/01/08	Outstanding
ASGP (fna ASSGP)	▶ 5,000.00		5,000.00
CTI Investment		▶ 63,000.00	63,000.00
Andrew T IRA	▶ 7,000.00	▶ 33,000.00	40,000.00
Baily, Michael G	▶ 1,000.00		1,000.00
Butterfly, Michael	▶ 60,000.00		60,000.00
Candy III, Tyler B	▶ 25,000.00		25,000.00
Carter A Cooper Revocable Trust	▶ 3,000.00	▶ 2,000.00	5,000.00
Chase Torres Family LP	▶ 10,000.00		10,000.00
Conor M Christianson IRA		▶ 9,000.00	9,000.00
Control Account		▶ 50,000.00	50,000.00
Samuel Miller 2004 GRAT#1		▶ 42,000.00	42,000.00
William Martinez Growth Partners		▶ 15,000.00	15,000.00
Xavier Butler IRA		▶ 100,000.00	100,000.00
Total:			425,000.00
	▶ 111,000.00	▶ 314,000.00	

▶ - Commitment

11/19/2008 19:39:50

FundCount Sample Reports: Portfolio: Holdings by Broker, by Asset Type, Tax Lot Details



Platinum Demo Fund
 12345 S. Expressway M/S 3102
 Dallas, TX 65432
 United States of America

Portfolio Analysis

as of November 20, 2007

Broker account	Types	Instrument	Tax lot			Ending values						
			#	Trade date	Sale date	Units	Cost	Price	Value	Unrealized gain % of total value		
Bank of America	Option	(YAALK) AMGEN INC	1	11/12/07	11/29/07	-5.00	-984.98	1.63	-814.98	170.00	3.38	
			2	11/20/07	11/29/07	-5.00	-799.98	1.63	-814.98	-15.00	3.38	
	Total for (YAALK) AMGEN INC						-10.00	-1,784.96	1.63	-1,629.96	155.00	6.77
	Common stock	(ALO) ALPHARMA INC	5	11/20/07		-25.00	-470.29	18.95	-473.74	-3.45	1.97	
			6	11/20/07		-175.00	-3,316.19	18.95	-3,316.19	0.00	13.77	
	Total for (ALO) ALPHARMA INC						-200.00	-3,786.48	18.95	-3,789.93	-3.45	15.73
	Common stock	(MSFT) MICROSOFT CORP	805	11/07/07		-500.00	-17,726.72	34.45	-17,227.25	499.47	71.51	
			(PLCE) CHILDREN'S PLACE	2	10/09/07		-1,000.00	-20,577.38	20.58	-20,583.53	-6.15	85.44
	Total for Common stock						-42,090.58		-41,600.71	489.87	172.68	
	Cash	Cash					52,078.31		52,078.31			
	Total for Bank of America						8,202.77		8,847.64	644.87	179.45	
	UBS	Option	(WMFAN) WMFAN	401	08/10/03		5.00	53.00	0.60	300.00	247.00	-1.25
				(WMFMC) WMFMC	601	08/21/03		3.00	274.95	1.40	420.00	145.05
		Total for Option						327.95		720.00	392.05	-2.99
		Common stock	(AV) AVAYA INC	1102	10/02/01		1.00	23.22	18.12	18.12	-5.10	-0.08
(BBBY) Bed Bath & Beyond Inc				102	09/10/02		100.00	3,069.00	37.42	3,742.00	673.00	-15.53
Total for (BBBY) Bed Bath & Beyond Inc						0.00	-226.05	37.42	0.00	226.05	0.00	
Common stock		(BGP) BORDERS GROUP INC	15	06/19/01		45.00	777.14	23.90	1,075.50	298.36	-4.46	
			(CMGI) CMGI INC	11	03/17/01		6.00	753.45	62.18	373.08	-380.37	-1.55
Common stock		(CVS) CVS CORP	7	12/17/00		15.00	494.01	40.00	600.00	105.99	-2.49	
			(FSR) FIRSTAR CORP NEW WISC	901	05/20/04		100.00	3,603.00	38.72	3,872.00	269.00	-16.07
Common stock		(JCI) JOHNSON CONTROLS INC	18	10/23/01		14.00	812.95	56.30	788.20	-24.75	-3.27	
			(LOW) Lowe's Companies, Inc	202	07/12/02		70.00	2,599.00	49.70	3,479.00	880.00	-14.44
Common stock		(LU) LUCENT TECHNOLOGIES	1	06/28/00		16.00	1,031.38	5.13	82.08	-949.30	-0.34	
			(MDT) Medtronic	302	08/17/02		60.00	3,099.00	49.75	2,985.00	-114.00	-12.39
Common stock		(MSFT) MICROSOFT CORP	802	09/12/03		100.00	1,000.00	27.30	2,730.00	1,730.00	-11.33	
	(ORCL) ORACLE CORP		10	02/14/01		10.00	324.17	19.97	199.70	-124.47	-0.83	
Common stock	(PFE) PFIZER INCORPORATED	12	05/09/01		11.00	516.14	32.67	359.37	-156.77	-1.49		
		(T) AT&T CORP	14	06/13/01		10.00	359.95	14.78	147.80	-212.15	-0.61	
Common stock	(WFMJ) WHOLE FOODS MARKET INC	1	05/14/00		22.00	987.95	77.73	1,710.06	722.11	-7.10		
		Total for Common stock						16,155.32		18,419.91	2,264.59	-76.46
Cash	Cash		0			28,778.36		28,778.36				
Total for UBS						45,261.63		47,918.27	2,656.64	-79.45		
Totals:						53,464.39		56,765.91	3,301.52	100.00		

12/09/2008 21:20:37

FundCount Sample Reports: Portfolio: Profit and Loss and Ending Values, by Industry, with Return %



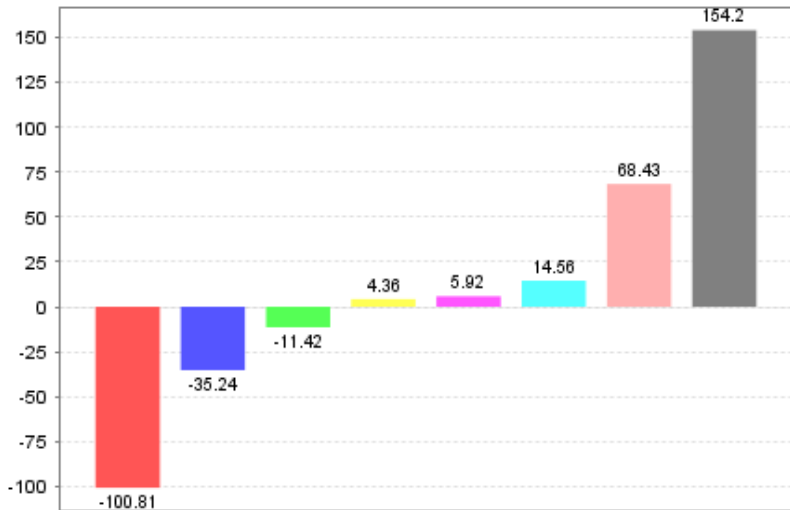
Platinum Demo Fund
 12345 S. Expressway M/S 3102
 Dallas, TX 65432
 United States of America

Portfolio Analysis

for period: January 01, 2001 - December 31, 2004

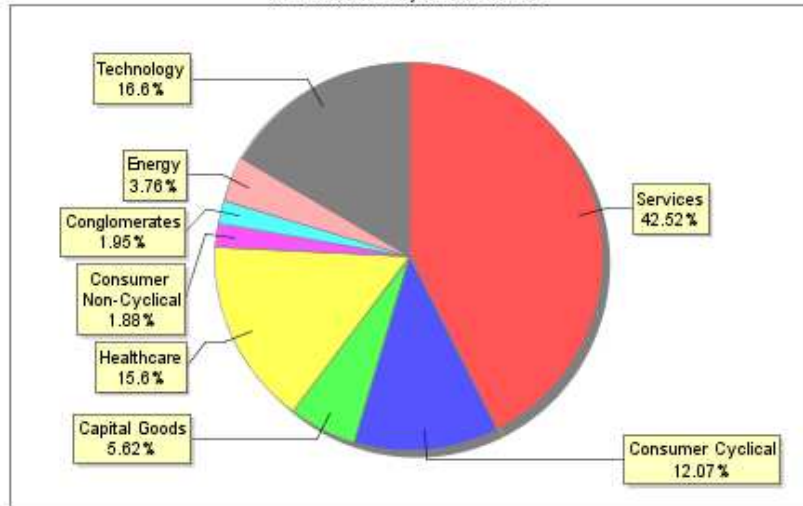
Stock industries	Profit & loss values					Ending values					% return		
	Realized	Unrealized	Other gain/loss	Total P&L	% of total P&L	Units	Cost	Price	Value	Unrealized gain	% of total value	% return	Performance type
Capital Goods	0.00	298.36	0.00	298.36	-11.42	45.00	777.14	23.90	1,075.50	298.36	5.62	38.39TWR	
Conglomerates	0.00	-380.37	0.00	-380.37	14.56	6.00	753.45	62.18	373.08	-380.37	1.95	-50.48TWR	
Consumer Cyclical	0.00	917.56	3.44	920.99	-35.24N/A		1,255.91N/A		2,310.06	1,054.15	12.07	25.90TWR	
Consumer Non-Cyclical	0.00	-156.77	1.98	-154.79	5.92	11.00	516.14	32.67	359.37	-156.77	1.88	-29.99TWR	
Energy	-2,188.34	393.94	6.24	-1,788.16	68.43N/A		327.95N/A		720.00	392.05	3.76	-11.36TWR	
Healthcare	0.00	-114.00	0.00	-114.00	4.36	60.00	3,099.00	49.75	2,985.00	-114.00	15.60	-3.68TWR	
Services	1,495.92	1,124.25	14.10	2,634.27	-100.81N/A		7,014.95N/A		8,139.20	1,124.25	42.52	58.45TWR	
Technology	-3,277.84	-757.26	5.68	-4,029.42	154.20N/A		2,738.72N/A		3,177.70	438.97	16.60	-6.524.37TWR	
Mutual Funds & Fixed Cash Inv							28,778.36		28,778.36			0.00TWR	
Totals:	-3,970.26	1,325.70	31.44	-2,613.12	100.00	N/A	45,261.63	N/A	47,918.27	2,656.64	100.00	-39.63 TWR	

Profit & Loss Allocation by Stock industries



■ Services ■ Consumer Cyclical ■ Capital Goods ■ Healthcare ■ Consumer Non-Cyclical
■ Conglomerates ■ Energy ■ Technology

Asset Allocation by Stock industries



■ Services ■ Consumer Cyclical ■ Capital Goods ■ Healthcare ■ Consumer Non-Cyclical
■ Conglomerates ■ Energy ■ Technology

FundCount Sample Reports: Portfolio: Profit and Loss, by Asset Type, Tax Lots Details



Platinum Demo Fund
 12345 S. Expressway M/S 3102
 Dallas, TX 65432
 United States of America

Portfolio Analysis

for period: January 01, 2001 - December 31, 2004

Types	Instrument	#	Tax lot		Profit & loss values				
			Trade date	Sale date	Realized	Unrealized	Other gain/loss	Total P&L	% of total P&L
Option									
	(WMFAN) WMFAN	401	08/10/03		0.00	247.00	0.00	247.00	-9.45
	(WMFMC) WMFMC	601	08/21/03		0.00	145.05	0.00	145.05	-5.55
Total for Option					0.00	392.05	0.00	392.05	-15.00
Common stock									
	(AV) AVAYA INC								
		501	08/11/03	08/16/04	165.05	0.00	0.00	165.05	-6.32
		1102	10/02/01		-6.17	-5.10	0.00	-11.28	0.43
Total for (AV) AVAYA INC					158.88	-5.10	0.00	153.77	-5.88
	(BBBY) Bed Bath & Beyond Inc								
		102	09/10/02		0.00	673.00	0.00	673.00	-25.75
		701	08/12/03		0.00	-446.95	0.00	-446.95	17.10
Total for (BBBY) Bed Bath & Beyond Inc					0.00	226.05	0.00	226.05	-8.65
	(BGP) BORDERS GROUP INC	15	06/19/01		0.00	298.36	0.00	298.36	-11.42
	(CMGI) CMGI INC	11	03/17/01		0.00	-380.37	0.00	-380.37	14.56
	(CPWR) COMPUWARE CORP	3	09/14/00	09/19/01	-708.92	-197.05	0.00	-905.97	34.67
	(CSCO) CISCO SYSTEMS INC								
		9	02/14/01	06/23/02	-334.67	0.00	0.00	-334.67	12.81
		5	12/15/00	06/23/02	-757.33	-112.79	0.00	-870.12	33.30
		4	10/14/00	06/23/02	-907.91	-753.22	0.00	-1,661.13	63.57
Total for (CSCO) CISCO SYSTEMS INC					-1,999.91	-866.01	0.00	-2,865.92	109.67
	(CVS) CVS CORP	7	12/17/00		0.00	1.80	3.44	5.24	-0.20
	(EMC) EMC CORP MASS								
		13	06/13/01	07/21/02	-433.82	0.00	0.00	-433.82	16.60
		8	02/08/01	07/21/02	-448.24	0.00	0.00	-448.24	17.15
		20	02/16/02	07/21/02	-500.45	0.00	0.00	-500.45	19.15
		17	10/17/01	07/21/02	-576.04	0.00	0.00	-576.04	22.04
Total for (EMC) EMC CORP MASS					-1,958.55	0.00	0.00	-1,958.55	74.95
	(FSR) FIRSTAR CORP NEW WISC								
		901	05/20/04		1,068.00	269.00	0.00	1,337.00	-51.16
		16	08/18/01	08/13/04	427.92	0.00	9.76	437.68	-16.75
Total for (FSR) FIRSTAR CORP NEW WISC					1,495.92	269.00	9.76	1,774.68	-67.91
	(HAS) HASBRO	6	12/15/00	01/02/02	-229.79	1.89	6.24	-221.66	8.48
	(JCI) JOHNSON CONTROLS INC	18	10/23/01		0.00	-24.75	4.34	-20.41	0.78
	(LOW) Lowe's Companies, Inc	202	07/12/02		0.00	880.00	0.00	880.00	-33.68
	(LU) LUCENT TECHNOLOGIES	1	06/28/00		0.00	-1,082.47	1.28	-1,081.19	41.38
	(MDT) Medtronic	302	08/17/02		0.00	-114.00	0.00	-114.00	4.36
	(MSFT) MICROSOFT CORP	802	09/12/03		0.00	1,730.00	0.00	1,730.00	-66.20
	(ORCL) ORACLE CORP	10	02/14/01		0.00	-124.47	0.00	-124.47	4.76
	(PFE) PFIZER INCORPORATED	12	05/09/01		0.00	-156.77	1.98	-154.79	5.92
	(SUNW) SUN MICROSYSTEMS INC	19	12/14/01	08/08/02	-727.89	0.00	0.00	-727.89	27.86
	(T) AT&T CORP	14	06/13/01		0.00	-212.15	4.40	-207.75	7.95
	(WFMI) WHOLE FOODS MARKET INC	1	05/14/00		0.00	689.70	0.00	689.70	-26.39
Total for Common stock					-3,970.26	933.65	31.44	-3,005.17	115.00
	Totals:				-3,970.26	1,325.70	31.44	-2,613.12	100.00

12/09/2008 21:07:03



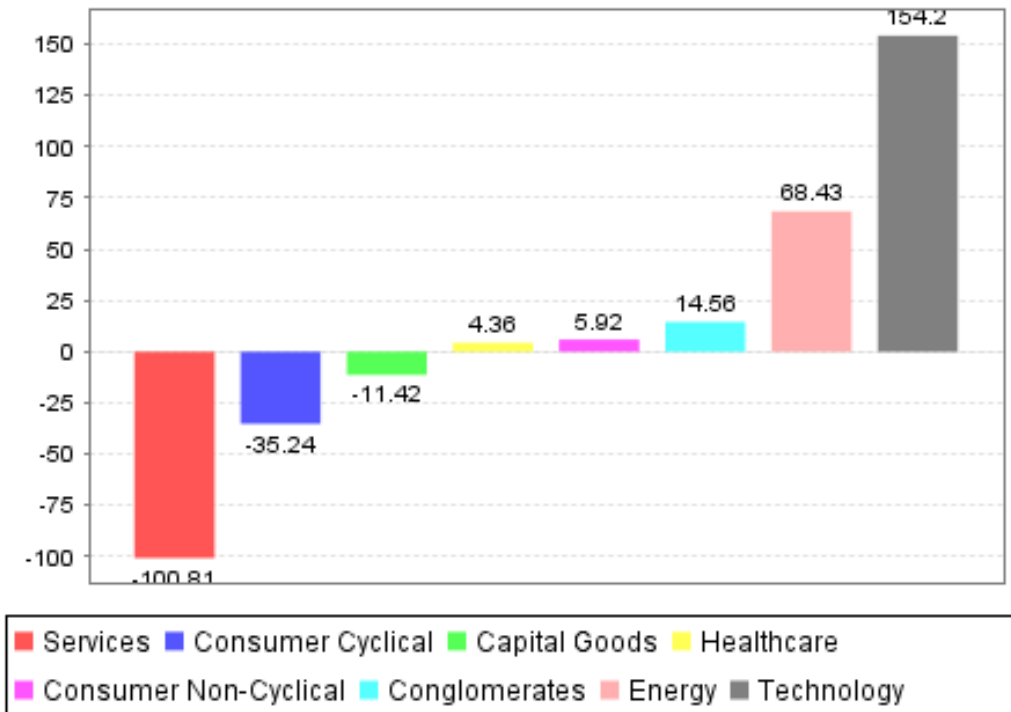
Platinum Demo Fund
 12345 S. Expressway M/S 3102
 Dallas, TX 65432
 United States of America

Portfolio Analysis

for period: January 01, 2001 - December 31, 2004

Stock industries	Profit & loss values				
	Realized	Unrealized	Other gain/loss	Total P&L	% of total P&L
Capital Goods	0.00	298.36	0.00	298.36	-11.42
Conglomerates	0.00	-380.37	0.00	-380.37	14.56
Consumer Cyclical	0.00	917.55	3.44	920.99	-35.24
Consumer Non-Cyclical	0.00	-156.77	1.98	-154.79	5.92
Energy	-2,188.34	393.94	6.24	-1,788.16	68.43
Healthcare	0.00	-114.00	0.00	-114.00	4.36
Services	1,495.92	1,124.25	14.10	2,634.27	-100.81
Technology	-3,277.84	-757.26	5.68	-4,029.42	154.20
Totals:	-3,970.26	1,325.70	31.44	-2,613.12	100.00

Profit & Loss Allocation by Stock industries



11/14/2008 16:34:53

FundCount Sample Reports: Portfolio: Holdings by Country, by Instrument



Platinum Demo Fund
 12345 S.Expressway M/S 3102
 Dallas, TX 65432
 United States of America

Portfolio Analysis

as of November 30, 2008

Geography	Instrument	Ending values					
		Units	Cost	Price	Value	Unrealized gain	FX Unrealized gain
Brazil							
	(PBR/A US) Petroleo Brasileiro SA	80,000.00	4,103,480.00	22.07	1,765,600.00	-2,337,880.00	0.00
	(RIO US) Vale do Rio Doce SP ADR	40,000.00	495,180.00	13.12	524,800.00	29,620.00	0.00
	(SDA US) Sadia SA	45,333.00	607,330.00	6.06	274,717.96	-332,612.04	0.00
Total for Brazil			5,205,990.00		2,565,117.96	-2,640,872.04	0.00
Canada							
	(AEM CN) Agnico Eagle Mines Ltd	91,600.00	3,292,302.11	33.26	2,512,672.99	-449,292.98	-330,336.14
	(AGC CN) Amarillo Gold Corp	960,000.00	811,831.27	0.46	364,206.19	-329,144.75	-118,480.34
	(AQI CN) Aquiline Resources Inc Ltd	279,533.00	1,305,962.97	1.03	237,458.96	-934,938.82	-133,565.19
	(CCO CN) Cameco Corp	51,000.00	1,756,276.29	19.73	829,880.41	-811,060.24	-115,335.64
	(GG US) Goldcorp Inc	124,300.00	3,916,872.40	18.66	2,319,438.00	-1,597,434.40	0.00
	(IMO CN) Imperial Oil Ltd.	105,600.00	3,964,062.40	42.65	3,714,507.22	68,744.87	-318,300.05
	(NGD CN) New Gold	45,200.00	222,806.67	1.40	52,189.69	-129,749.18	-40,867.80
	(POT CN) Potash Corp	14,000.00	2,150,822.61	102.60	1,184,659.79	-571,653.17	-394,509.65
	(S CN) Sherritt International Corp Ltd	220,000.00	2,561,203.98	3.70	671,340.21	-1,630,275.35	-259,588.43
	(SU CN) Suncor Energy Inc.	69,600.00	2,177,731.29	28.95	1,661,789.69	-407,240.86	-108,700.74
	(TWF-U CN) Timberwest Forest	146,100.00	1,987,302.96	6.83	822,979.79	-1,001,113.08	-163,210.09
Total for Canada			24,147,174.95		14,371,122.94	-7,793,157.95	-1,982,894.05
Switzerland							
	(BEAN SW) Belimo Holding AG	823.00	774,547.97	795.00	565,110.55	-237,906.97	28,469.55
	(BUCN SW) Bucher Industries AG	7,862.00	949,054.04	124.90	848,129.04	-109,992.47	9,067.47
	(EMMN SW) Emmi AG	13,000.00	1,540,734.32	110.00	1,235,101.05	-323,795.13	18,161.87
	(EMSN VX) EMS-Chemie Holding AG	5,000.00	509,986.72	87.60	378,303.68	-171,981.87	40,298.83
	(LISN SW) Lindt & Spruengli AG	72.00	2,315,069.11	28,000.00	1,741,233.37	-325,692.64	-248,143.10
	(OFN SW) Orell Fuessli Holding AG	15,664.00	2,294,440.75	185.00	2,502,884.78	168,339.77	40,104.26
	(PRWN SW) Precious Woods Holding	17,327.00	1,558,036.75	47.55	711,607.23	-941,864.04	95,434.52
	(SGSN VX) SGS SA	1,746.00	1,966,921.34	1,139.00	1,717,648.99	-226,012.01	-23,260.34
	(SIK SW) Sika AG	800.00	1,333,337.83	910.00	628,778.72	-561,715.86	-142,843.25
	(UHR VX) The Swatch Group AG	8,900.00	2,271,459.10	180.00	1,383,658.66	-697,134.27	-190,666.17
	(UZAN SW) Flughafen Zuerich AG	3,453.00	1,064,544.69	308.25	919,318.75	-206,726.02	61,500.08
Total for Switzerland			16,578,132.62		12,631,774.83	-3,634,481.51	-311,876.28
Germany							
	(CH0014524992) Deutsche Bahn	250,000.00	201,053.74	1.00	215,831.32	-208.55	14,986.12
	(DE0001115178) Germany 0.00%	15,000,000.00	21,908,213.57	1.00	19,050,058.44	48,904.90	-2,907,060.03
	(PFV EU) Pfeiffer Vacuum	2,000.00	121,728.49	47.70	121,406.04	22,344.99	-22,667.44
Total for Germany			22,230,995.80		19,387,295.80	71,041.34	-2,914,741.34
Netherlands							
	(BOKA NA) Boskalis Westminster NV	67,539.00	2,185,462.52	25.75	2,213,215.88	233,528.41	-205,775.05
	(HAL NA) HAL Trust	26,939.00	3,194,653.07	60.65	2,079,237.96	-515,936.70	-599,478.41
	(SLIGR EU) Sligo Food Group NV	25,000.00	1,033,586.99	16.80	534,492.00	-326,074.45	-173,020.54
Total for Netherlands			6,413,702.58		4,826,945.84	-608,482.74	-978,274.00
Norway							
	(NO0010403553) Norway 0.00%	50,000,000.00	9,751,263.93	0.99	7,390,887.47	5,468.32	-2,365,844.78
	(STL NO) Statoil ASA	152,099.00	2,658,831.71	130.80	2,957,417.75	676,950.47	-378,364.43
	(YAR NO) Yara International ASA	73,000.00	1,359,362.10	139.25	1,511,111.94	249,313.71	-97,563.87
Total for Norway			13,769,457.74		11,859,417.16	931,732.49	-2,841,773.08
United States							
	(GLD US) SPDR GOLD TRUST	127,200.00	10,834,207.92	71.34	9,074,448.00	-1,759,759.92	0.00
	(NE US) Noble Corp	20,000.00	1,008,317.00	32.21	644,200.00	-364,117.00	0.00
	(NEM US) Newmont Mining Corp.	75,900.00	3,648,133.67	26.34	1,999,206.00	-1,648,927.67	0.00
	(SJT US) San Juan Basin Royalty	26,800.00	965,654.00	37.23	997,764.00	32,110.00	0.00
	(SLV US) ISHARES SILVER TRUST	721,000.00	10,817,844.95	9.58	6,907,180.00	-3,910,664.95	0.00
	(VLO US) Valero Energy Inc	20,000.00	704,786.00	20.58	411,600.00	-293,186.00	0.00
	(XTO US) XTO Energy Inc.	43,300.00	1,788,002.13	35.95	1,556,635.00	-231,367.13	0.00
Total for United States			29,766,945.67		21,591,033.00	-8,175,912.67	0.00
N/A							
	Cash		113,399,656.61		113,399,656.61		
	(Gold Bullion) Gold Bullion	108,485.25	81,023,790.96	723.75	78,516,200.41	-2,507,590.55	0.00
Total for N/A			194,423,447.57		191,915,857.03	-2,507,590.55	0.00
Totals:			312,535,846.93		279,148,564.55	-24,357,272.63	-9,029,558.75

12/10/2008 20:17:10

FundCount Sample Reports: Portfolio: Holdings by Side Pockets



Platinum Demo Fund
 12345 S. Expressway M/S 3102
 Dallas, TX 65432
 United States of America

Portfolio Analysis

as of February 27, 2004

Portfolio	Instrument	Units	Cost	Price	Ending values		
					Value	Unrealized gain % of total value	
Main Pool							
	(AV) AVAYA INC	1.00	23.22	17.15		-6.07	0.12
	(BBBY) Bed Bath & Beyond Inc	0.00	-226.05	40.93	0.00	226.05	0.00
	(BGP) BORDERS GROUP INC	45.00	777.14	24.00	1,080.00	302.86	7.60
	(CMGI) CMGI INC	6.00	753.45	2.40	14.40	-739.05	0.10
	(CVS) CVS CORP	15.00	494.01	37.50	562.50	68.49	3.96
	(FSR) FIRSTAR CORP NEW WISC	30.00	733.08	37.50	1,125.00	391.92	7.91
	(JCI) JOHNSON CONTROLS INC	14.00	812.95	58.32	816.48	3.53	5.74
	(LOW) Lowe's Companies, Inc	70.00	2,599.00	56.00	3,920.00	1,321.00	27.57
	(LU) LUCENT TECHNOLOGIES	16.00	1,031.38	4.19	67.04	-964.34	0.47
	(MDT) Medtronic	60.00	3,099.00	46.90	2,814.00	-285.00	19.79
	(MSFT) MICROSOFT CORP	100.00	1,000.00	26.53	2,653.00	1,653.00	18.66
	(ORCL) ORACLE CORP	10.00	324.17	12.87	128.70	-195.47	0.91
	(PFE) PFIZER INCORPORATED	11.00	516.14	36.65	403.15	-112.99	2.84
	(WFMI) WHOLE FOODS MARKET INC	22.00	987.95	77.31	1,700.82	712.87	11.96
	(WMFAN) WMFAN	5.00	53.00	0.20	100.00	47.00	0.70
	(WMFMC) WMFMC	3.00	274.95	1.10	330.00	55.05	2.32
Total for Main Pool			13,253.40		15,732.24	2,478.84	110.65
Side Pocket A							
	(AV) AVAYA INC	-100.00	-165.05	17.15	-1,715.00	-1,549.95	-12.06
	(T) AT&T CORP	10.00	359.95	20.03	200.30	-159.65	1.41
Total for Side Pocket A			194.90		-1,514.70	-1,709.60	-10.65
N / A							
	Cash		12,152.36		12,152.36		
Totals:			25,600.66		26,369.90	769.24	100.00

12/09/2008 21:11:06



Platinum Demo Fund
 12345 S. Expressway M/S 3102
 Dallas, TX 65432
 United States of America

Performance History by Instrument from 10/01/03 to 06/16/04



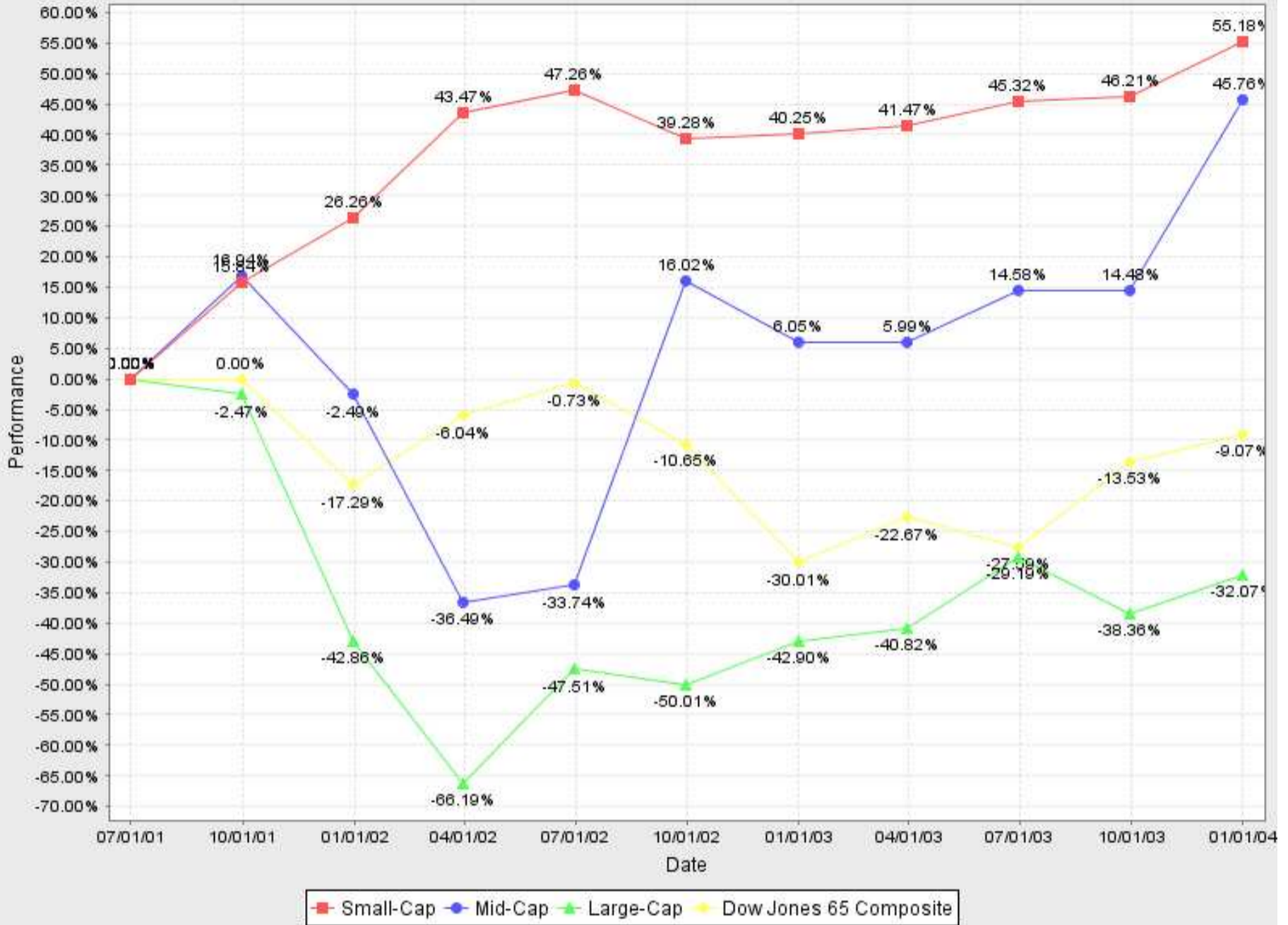
	Medtronic	ORACLE CORP	PFIZER INCORPORATED	Dow Jones 65 Composite
10/01/03	0.00%	0.00%	0.00%	0.00%
10/31/03	-7.86%	-5.23%	-0.87%	5.64%
11/30/03	-7.86%	-5.23%	-0.87%	5.44%
12/31/03	-7.86%	-5.23%	-0.87%	11.50%
01/31/04	-7.86%	-5.23%	-0.87%	10.88%
02/29/04	-3.76%	-1.08%	18.15%	12.07%
03/31/04	-3.76%	-1.08%	18.15%	10.89%
04/30/04	-3.76%	-1.08%	18.15%	9.46%
05/31/04	-1.70%	-12.38%	13.93%	9.98%
06/16/04	-1.70%	-12.38%	13.93%	12.08%

11/17/2008 17:10:03



Platinum Demo Fund
 12345 S. Expressway M/S 3102
 Dallas, TX 65432
 United States of America

Performance History by Sector from 07/01/01 to 12/31/03



	Small-Cap	Mid-Cap	Large-Cap	Dow Jones 65 Composite
07/01/04	0.00%	0.00%	0.00%	0.00%
07/31/04	15.84%	16.94%	-2.47%	0.00%
08/31/04	26.26%	-2.49%	-42.86%	-17.29%
09/30/04	43.47%	-36.49%	-66.19%	-6.04%
10/31/04	47.26%	-33.74%	-47.51%	-0.73%
11/30/04	39.28%	16.02%	-50.01%	-10.65%
12/31/04	40.25%	6.05%	-42.90%	-30.01%

11/17/2008 17:50:52



Platinum Demo Fund
 12345 S. Expressway M/S 3102
 Dallas, TX 65432
 United States of America

Closed Trades Analysis

for accounts: All accounts

03/08/00 - 12/31/04

CLOSED TRADES SUMMARY

Net profit	-3,970.26		% of profitable trades	25.00%
Total number of trades	8		Avg. profit per trade	-496.28
Total number of wins	2		Avg. loss per trade	-703.90
Total number of losses	6		Avg. gain per trade	207.62
			Largest winning trade	1,495.92
			Largest losing trade	-1,999.91

CLOSED TRADES (LONG POSITIONS)

Net profit	-4,135.31		% of profitable trades	14.29%
Total number of trades	7		Avg. profit per trade	-590.76
Total number of wins	1		Avg. loss per trade	-804.46
Total number of losses	6		Avg. gain per trade	213.70
			Largest winning trade	1,495.92
			Largest losing trade	-1,999.91

CLOSED TRADES (SHORT POSITIONS)

Net profit	165.05		% of profitable trades	100.00%
Total number of trades	1		Avg. profit per trade	165.05
Total number of wins	1		Avg. loss per trade	0.00
Total number of losses	0		Avg. gain per trade	165.05
			Largest winning trade	165.05
			Largest losing trade	0.00

11/17/2008 17:54:09



Platinum Demo Fund.
 12345 Expressway M/S 3102
 Dallas, 65432
 United States of America

Collateral report

as of 11/17/08

Portfolio: All portfolios

Loan #	Original principal	Residual principal	Location	Property type	LTV	Current Int. rate, %
359369311-38	340,091.68	313,860.27	Las Vegas, NY 11530	Raw land	1.00	12.490
359515110-52	57,660.45	52,977.97	ELWOOD, NC 28277	Residential	1.00	9.950
810000583-52	66,954.04	51,268.35	Detroit, NC 28459	Commercial	1.00	8.500
Totals	464,706.17	418,106.59			1.00	10.313

11/17/2008 21:02:17



portfolio: All portfolios

Bonds

as of 11/17/08

Ticker	Name	CUSIP	Coupon Structure	Maturity Date	Date of Issue	Coupon Mode	Coupon Block #	Trade Date	Settle Date	Face Value	Original Face	Total Cost	Discount / Premium	Accrued Interest	Current Value	Remarks (MDY)
REP	REPSOL YPF S.A. WEBS 2006-1A B1L	n/a	n/a	12/31/16	11/17/08	n/a	0.00			125,500.00	125,500.00	-95,480.40	0.00	29,994.50		
					n/a		1	11/17/07	11/17/07	100.00	125,500.00	125,500.00	-95,480.40	0.00	29,994.50	
TKR	TIMKEN CO SHERW 2006-3A C	n/a	n/a	12/31/15	11/17/07	n/a	0.00			356,000.00	356,000.00	-193,450.40	0.00	162,514.00		
					n/a		1	11/17/07	11/17/07	100.00	356,000.00	356,000.00	-193,450.40	0.00	162,514.00	
Totals										481,500.00	481,500.00	-288,930.80	0.00	192,508.50		

CDOs

as of 11/17/08

Deal Identifier #	ISIN	CUSIP	Coupon Structure	Maturity Date	Collateral Manager	Date of Issue	Coupon Mode	Coupon	Original Face	Current Face	Trade Date	Settle Date	Purch Price (%)	Total Cost	C/F Amount	Factor	Mkt Price	Principal	Accrued	Proceeds	% of Instrument	% NAV	% Assets	Yield	Avg Life	Duration	Remarks (MDY)
ACABS 2007-2A B1	000820AE0		Floating	07/11/45		06/28/07	ACT/360	12.86	15,000,000.00	15,000,000.00				4,556,250.00	15,000,000.00			15,000,000.00	509,124.79	15,509,124.79	48.45	52.46	53.28	0.00	0.00	0.00	
						n/a		12.86	15,000,000.00	15,000,000.00	09/06/07	09/11/07	30.38	4,556,250.00	15,000,000.00	1.0000000000	30.38	15,000,000.00	509,124.79	15,509,124.79	48.45	52.46	53.28	0.00	0.00	0.00	ACABS 2007-2A B1
HARTS 2007-1A B1	417214AE3		Floating	04/10/47		07/10/07	ACT/360	10.49	4,625,000.00	4,624,325.78				1,572,270.76	4,624,325.78			4,624,325.78	110,454.57	4,734,780.35	14.94	16.17	16.43	0.00	0.00	0.00	
						n/a		10.49	4,625,000.00	4,624,325.78	08/28/07	08/31/07	34.00	1,572,270.76	4,624,325.78	0.9998542220	34.00	4,624,325.78	110,454.57	4,734,780.35	14.94	16.17	16.43	0.00	0.00	0.00	HARTS 2007-1A B1
SHERW 2006-3A C	82442VAF2		Floating	02/09/47		08/09/07	ACT/360	12.11	7,000,000.00	6,337,234.84				265,371.71	6,337,234.84			6,337,234.84	112,984.06	6,450,218.90	20.47	22.17	22.51	0.00	0.00	0.00	
						n/a		12.11	7,000,000.00	6,337,234.84	08/28/07	09/04/07	4.19	265,371.71	6,337,234.84	0.9053192630	4.19	6,337,234.84	112,984.06	6,450,218.90	20.47	22.17	22.51	0.00	0.00	0.00	SHERW 2006-3A C
WEBS 2006-1A B1L	94769WAL7		Floating	04/13/47		07/13/07	ACT/360	8.76	5,000,000.00	5,000,000.00				825,000.00	5,000,000.00			5,000,000.00	97,277.78	5,097,277.78	16.15	17.49	17.76	0.00	0.00	0.00	
						n/a		8.76	5,000,000.00	5,000,000.00	08/22/07	08/27/07	16.50	825,000.00	5,000,000.00	1.0000000000	16.50	5,000,000.00	97,277.78	5,097,277.78	16.15	17.49	17.76	0.00	0.00	0.00	WEBS 2006-1A B1L
Total CDOs								31,625,000.00	30,961,560.62					7,218,892.47	30,961,560.62			30,961,560.62	929,841.20	31,791,401.82	100.00	108.29	109.98	0.00	0.00	0.00	

Home equities

as of 11/17/08

Deal Identifier #	ISIN	CUSIP	Coupon Structure	Maturity Date	Originator	Date of Issue	Coupon Mode	Coupon	Original Face	Current Face	Trade Date	Settle Date	Purch Price (%)	Total Cost	C/F Amount	Factor	Mkt Price	Principal	Accrued	Proceeds	% of Instrument	% NAV	% Assets	Yield	Avg Life	Duration	Remarks (MDY)	
RALI 2007-QS11 AV	74925GAD3		WAC	10/25/37		10/03/07	30/360	0.34	152,918,084.50	152,918,084.50				1,201,836.14	152,918,084.50			152,918,084.50	0.00	0.00	152,918,084.50	70.51	534.85	543.21	0.00	0.00	0.00	
						n/a		0.34	152,918,084.50	152,918,084.50	09/28/07	10/03/07	0.79	1,201,836.14	152,918,084.50	1.0000000000	0.79	152,918,084.50	0.00	0.00	152,918,084.50	70.51	534.85	543.21	0.00	0.00	0.00	RALI 2007-QS11 AV
RALI 2007-QS4 B1	74923HBR1		Fixed	03/25/37		07/01/07	30/360	6.35	2,054,100.00	2,044,894.20				878,026.45	2,040,078.22			2,040,078.22	10,792.22	2,050,870.44	0.94	7.14	7.25	0.00	0.00	0.00		
						n/a		6.35	2,054,100.00	2,044,894.20	09/29/07	07/05/07	1.42	878,026.45	2,040,078.22	0.99317376066178	1.42	2,040,078.22	10,792.22	2,050,870.44	0.94	7.14	7.25	0.00	0.00	0.00	RALI 2007-QS4 B1	
RALI 2007-QS4 M3	74923HBQ3		Fixed	03/25/37		07/01/07	30/360	6.35	3,174,500.00	3,160,272.94				2,158,367.82	3,152,830.10			3,152,830.10	16,678.80	3,169,508.90	1.45	11.03	11.20	0.00	0.00	0.00		
						n/a		6.35	3,174,500.00	3,160,272.94	09/29/07	07/05/07	1.42	2,158,367.82	3,152,830.10	0.99317375927731	1.42	3,152,830.10	16,678.80	3,169,508.90	1.45	11.03	11.20	0.00	0.00	0.00	RALI 2007-QS4 M3	
RALI 2007-QS9 AV	75116FBK4		n/a	07/25/37		07/01/07	30/360	0.41	58,033,726.00	58,033,726.00				680,555.70	58,033,726.00			58,033,726.00	19,612.84	58,053,338.84	26.76	202.98	206.15	0.00	0.00	0.00		
						n/a		0.41	58,033,726.00	58,033,726.00	07/24/07	07/30/07	1.17	680,555.70	58,033,726.00	1.0000000000	1.42	58,033,726.00	19,612.84	58,053,338.84	26.76	202.98	206.15	0.00	0.00	0.00	RALI 2007-QS9 WAC IO	
RFMSI 2007-SA3 B1	74958TAR4		Fixed	07/27/37		07/01/07	30/360	5.81	727,400.00	727,328.53				600,955.20	727,186.15			727,186.15	3,518.51	730,704.66	0.34	2.54	2.58	0.00	0.00	0.00		
						n/a		5.81	727,400.00	727,328.53	10/07/07	10/13/07	0.63	600,955.20	727,186.15	0.99970601088866	0.63	727,186.15	3,518.51	730,704.66	0.34	2.54	2.58	0.00	0.00	0.00	RFMSI 2007-SA3 B1	
Total CMO								216,907,810.50	216,884,306.17					5,519,841.31	216,871,904.97			216,871,904.97	50,602.37	216,922,507.34	100.00	758.54	770.39	0.00	0.00	0.00		

Mortgages

as of 11/17/08

Loan #	Description	Borrower name	Borrower City	Borrower State	Borrower Zip	Principal Amount	Value	Mortgage Property Valuation	Current Int. rate, %	Term remaining	Accrued interest	LTV	Last payment date	Last payment number	Next payment number	Previous rate, %	Status	Status since
359369311-38	#359369311-38, 340,091.68, 12.49%, 8446 day(s)	LOTHAR MATTHAUS	Las Vegas	New York	11530	313,860.27	313,860.27		12.49	8079	0.00			0	0			
						313,860.27	313,860.27		12.49	8079	0.001.00			0	0			
359515110-52	#359515110-52, 57,660.45, 9.95%, 4063 day(s)	PETER CROUCH	ELWOOD	North Carolina	28277	52,977.97	52,977.97		9.95	3696	0.00			0	0			
						52,977.97	52,977.97		9.95	3696	0.001.00			0	0			
810000583-52	#810000583-52, 66,954.04, 8.5%, 10272 day(s)	GARY NEVILLE	Detroit	North Carolina	28459	51,268.35	51,268.35		8.50	9905	0.00			0	0			
						51,268.35	51,268.35		8.50	9905	0.001.00			0	0			
Totals						418,106.59	418,106.59		0.00		0.00			0	0			



Loan aging report
as of 07/15/2008

Portfolio: All portfolios

Loan #	Borrower name	Original Principal	Residual Principal	Current Int. rate, %	Maturity date	Next payment date	LTV	1-30	31-60	61-90	91-120	121+
359390755-54	ANDREY SHEVCHENKO	328,378.51	328,272.46	12.240	07/01/2036	08/01/2008	1.00	3,461.62				
359515110-52	PETER CROUCH	57,660.45	57,515.78	9.950	03/01/2023	07/31/2008	1.00	620.86				
810000583-52	GARY NEVILLE	66,954.04	66,902.78	8.500	11/01/2035	07/31/2008	1.00	525.42				
810024169-52	ZEPP BLATTER	284,991.03	284,991.03	8.350	11/01/2036	07/31/2008	1.00	2,188.78				
810030600-52	TIM HOWARD	296,118.00	296,118.00	9.440	01/01/2047	07/31/2008	1.00	2,393.04				
835019909	WAYNE ROONEY	171,592.18	171,592.18	0.000	06/01/2036	08/01/2008	1.00	N/A				
835020958	VAN DER SAAR	179,717.88	179,717.88	0.000	12/01/2036	08/01/2008	1.00	N/A				
835021341	ROGER FEDERER	219,186.05	219,186.05	0.000	09/01/2036	08/01/2008	1.00	N/A				
835021353	RAFAEL NADAL	235,286.80	235,058.17	6.875	07/01/2036	08/01/2008	1.00	1,576.63				
8359006587-52	GARY LINEKER	37,145.25	37,145.25	5.990	01/01/2018	07/31/2008	1.00	425.32				
836001102	PIT SAMPRAS	101,080.88	101,080.88	9.900	06/01/2036	08/01/2008	1.00	890.23				
836001106	ANDRE AGASSI	79,572.30	79,572.30	10.900	06/01/2036	08/01/2008	1.00	759.16				
836001107	DIDA	87,970.48	87,930.87	10.900	07/01/2036	08/01/2008	1.00	838.53				
836001115	RIQUELME	97,665.91	97,612.42	0.000	06/01/2036	08/01/2008	1.00	N/A				
836001116	LEV YASHIN	97,703.21	97,703.21	10.900	06/01/2036	08/01/2008	1.00	932.14				
836001119	FERNANDO TORRES	60,174.79	60,107.85	9.900	06/01/2036	08/01/2008	1.00	529.37				
836001712	DIRK KUYT	123,500.00	123,500.00	12.000	09/01/2036	08/01/2008	1.00	1,278.84				
1255032808	DARIO SRNA	8,995.08	8,995.08	9.000	03/01/2010	08/01/2008	1.00	464.55				
3933022508	RAUL	56,637.83	56,606.39	9.000	03/01/2010	08/01/2008	1.00	2,923.46				
836001118	ASHLEY COLE	65,743.21	65,642.38	9.900	06/01/2036	08/01/2008	1.00	578.12				
836001710-52	WES BROWN	53,048.78	53,048.78	6.450	12/01/2036	07/31/2008	1.00	339.40				
Totals		2,709,122.66	2,708,299.74					N / A				

FundCount Sample Reports: Portfolio: Fund Statistics



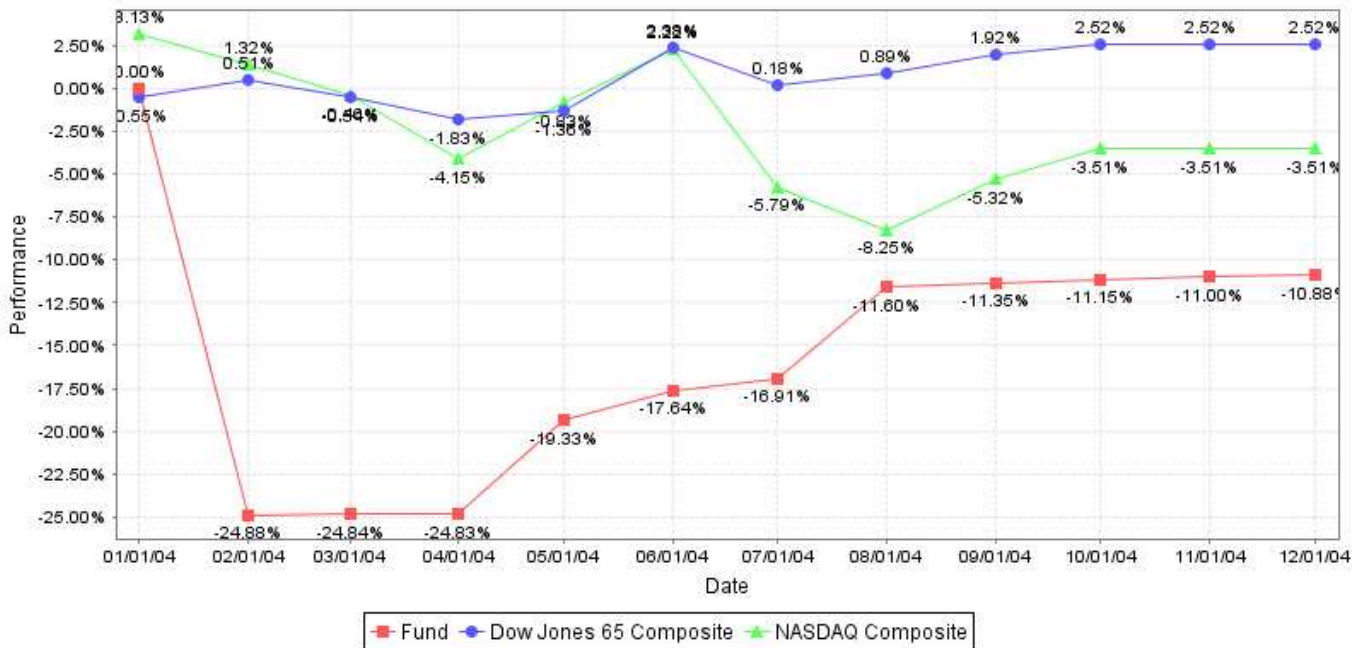
Platinum Demo Fund
 12345 S. Expressway M/S 3102
 Dallas, TX 65432
 United States of America

Fund statistics

January 01, 2004 - December 31, 2004

All portfolios

Fund statistics from 01/01/04 to 12/31/04



Period	Fund Performance	Market Performance (Dow Jones 65 Composite)	Market Performance (NASDAQ Composite)	Cumulative Fund Performance	Cumulative Market Performance (Dow Jones 65 Composite)	Cumulative Market Performance (NASDAQ Composite)
01/01/2004 - 01/31/2004	0.00%	-0.55%	3.13%	0.00%	-0.55%	3.13%
02/01/2004 - 02/29/2004	-24.78%	1.07%	-1.76%	-24.88%	0.51%	1.32%
03/01/2004 - 03/31/2004	0.00%	-1.05%	-1.75%	-24.84%	-0.54%	-0.46%
04/01/2004 - 04/30/2004	0.00%	-1.29%	-3.71%	-24.83%	-1.83%	-4.15%
05/01/2004 - 05/31/2004	2.68%	0.47%	3.47%	-19.33%	-1.36%	-0.83%
06/01/2004 - 06/30/2004	0.49%	3.80%	3.07%	-17.64%	2.38%	2.22%
07/01/2004 - 07/31/2004	0.00%	-2.15%	-7.83%	-16.91%	0.18%	-5.79%
08/01/2004 - 08/31/2004	4.70%	0.71%	-2.61%	-11.60%	0.89%	-8.25%
09/01/2004 - 09/30/2004	0.00%	1.02%	3.20%	-11.35%	1.92%	-5.32%
10/01/2004 - 10/31/2004	0.00%	0.58%	1.90%	-11.15%	2.52%	-3.51%
11/01/2004 - 11/30/2004	0.00%	0.00%	0.00%	-11.00%	2.52%	-3.51%
12/01/2004 - 12/31/2004	0.00%	0.00%	0.00%	-10.88%	2.52%	-3.51%

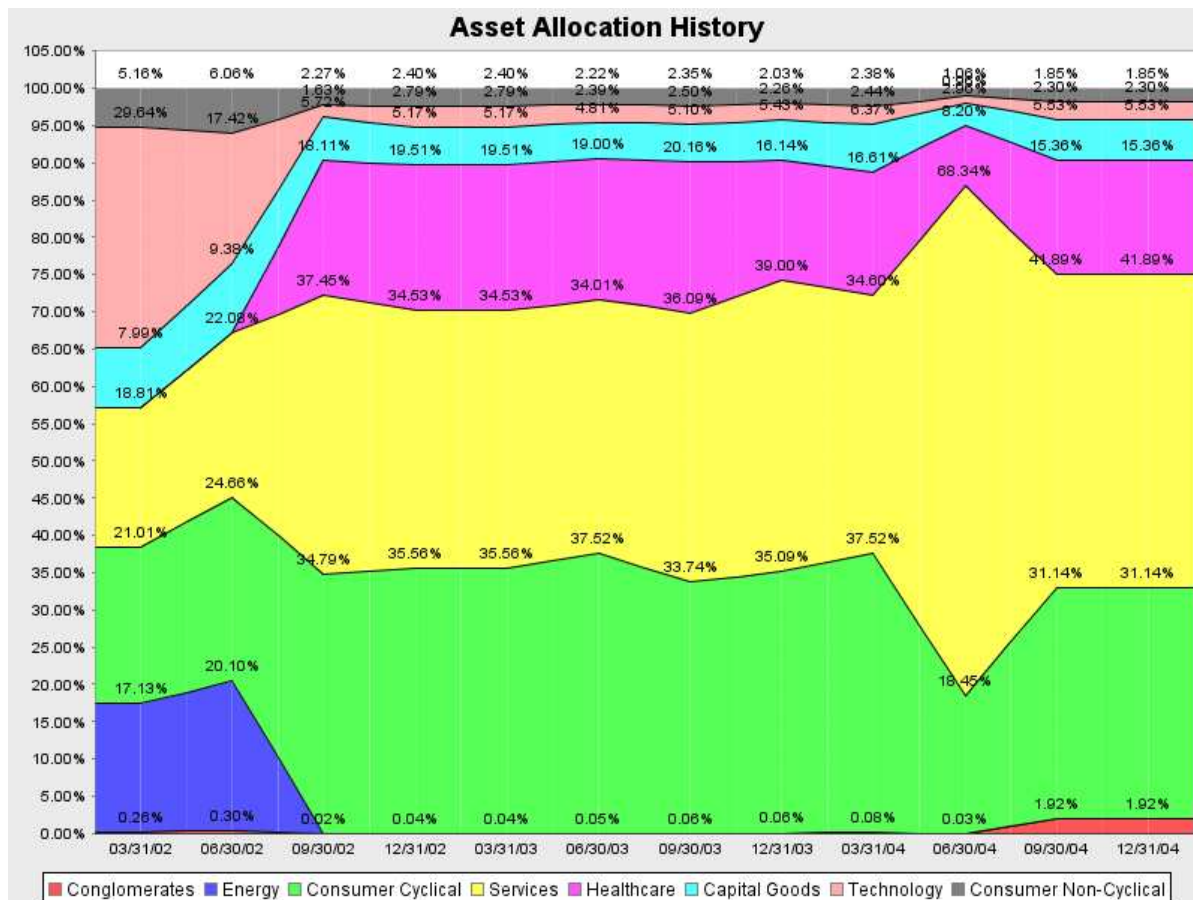
Quantitative statistics	Fund	Dow Jones 65 Composite	NASDAQ Composite
Standard deviation:	7.19	1.44	3.32
Sharpe ratio (Risk-free return=5.00):	-3.30	-1.73	-2.56
Sortino ratio (MAR=5.00):	-0.71	-0.14	-0.40
Correlation:		-0.13	0.13
Beta:		-0.66	0.29
Alpha:		-1.27	-1.34
Treynor ratio:		36.13	-82.76
R:		-0.13	0.13
R Squared:		-0.13	0.13

Performance	Fund	Dow Jones 65 Composite	NASDAQ Composite
Highest 12 month return:	-18.74	2.52	-3.51
Lowest 12 month return:	-18.74	2.52	-3.51
Average annual return:	-18.74	2.52	-3.51
Average monthly return:	-1.56	0.21	-0.29
Highest monthly return:	4.70	3.80	3.47
Lowest monthly return:	-24.78	-2.15	-7.83
Average gain:	0.72	0.96	2.11
Average loss:	-24.78	-1.26	-3.53
Cumulative return:	-18.74	2.52	-3.51
Composite monthly return:	-1.71	0.21	-0.30
Longest losing streak:	1	2	3
Maximum drawdown:	-24.78	-2.33	-10.24

FundCount Sample Reports: Portfolio: Asset Allocation History



Platinum Demo Fund
 12345 S. Expressway M/S 3102
 Dallas, TX 65432
 United States of America



	03/31/02	06/30/02	09/30/02	12/31/02	03/31/03	06/30/03	09/30/03	12/31/03	03/31/04	06/30/04	09/30/04	12/31/04
Conglomerates	0.26%	0.30%	0.02%	0.04%	0.04%	0.05%	0.06%	0.06%	0.08%	0.03%	1.92%	1.92%
Energy	17.13%	20.10%	0.00%	0.00%	0.00%	0.00%	0.00%	0.00%	0.00%	0.00%	0.00%	0.00%
Consumer Cyclical	21.01%	24.66%	34.79%	35.56%	35.56%	37.52%	33.74%	35.09%	37.52%	18.45%	31.14%	31.14%
Services	18.81%	22.08%	37.45%	34.53%	34.53%	34.01%	36.09%	39.00%	34.60%	68.34%	41.89%	41.89%
Healthcare	0.00%	0.00%	18.11%	19.51%	19.51%	19.00%	20.16%	16.14%	16.61%	8.20%	15.36%	15.36%
Capital Goods	7.99%	9.38%	5.72%	5.17%	5.17%	4.81%	5.10%	5.43%	6.37%	2.96%	5.53%	5.53%
Technology	29.64%	17.42%	1.63%	2.79%	2.79%	2.39%	2.50%	2.26%	2.44%	0.96%	2.30%	2.30%
Consumer Non-Cyclical	5.16%	6.06%	2.27%	2.40%	2.40%	2.22%	2.35%	2.03%	2.38%	1.06%	1.85%	1.85%
Total	100.00%	100.00%	100.00%	100.00%	100.00%	100.00%	100.00%	100.00%	100.00%	100.00%	100.00%	100.00%

10/30/2008 21:44:06

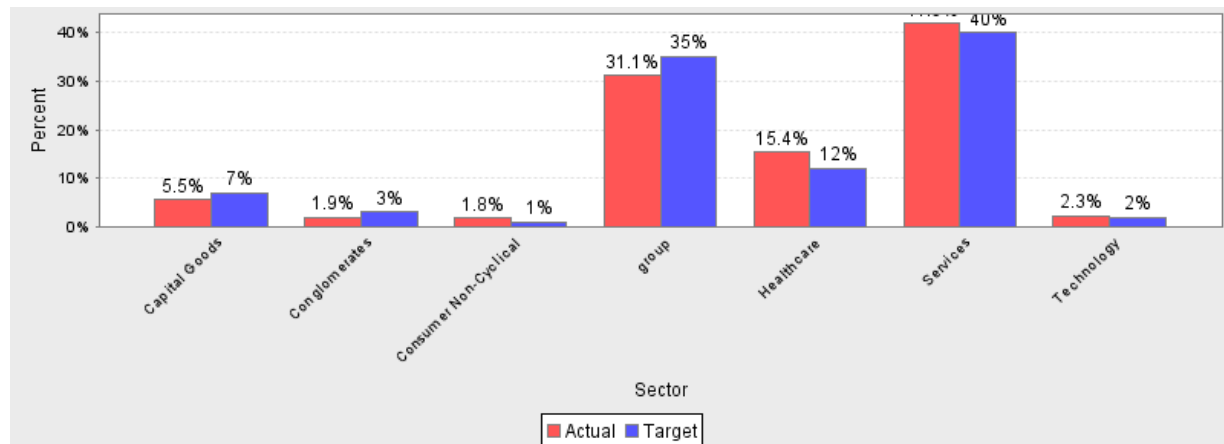
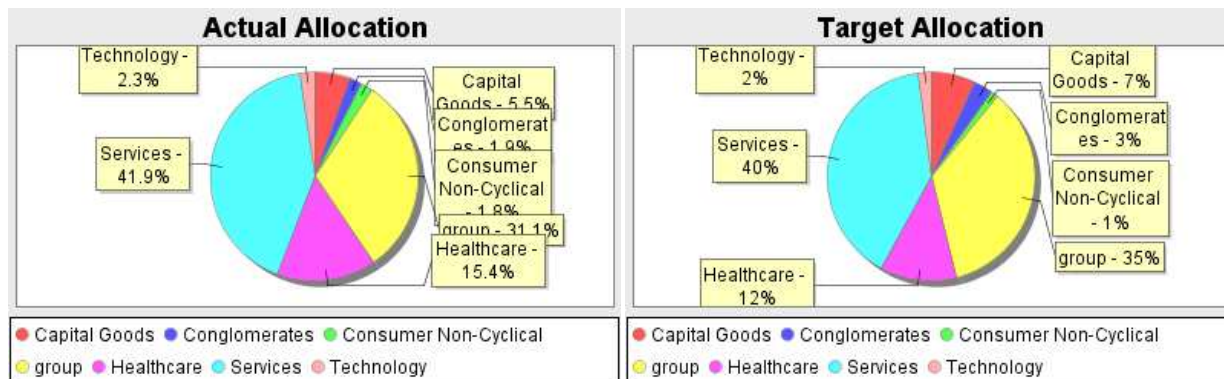
FundCount Sample Reports: Portfolio: Asset Allocation: Target vs. Actual



Platinum Demo Fund
12345 S. Expressway M/S 3102
Dallas, TX 65432
United States of America

Asset Allocation: Target vs. Actual

as of December 31, 2004



	Current target a/o January 31, 2004		Rebal. Needed		Actual December 31, 2004		Actual December 31, 2003		Actual December 31, 2002		Actual December 31, 2001		Actual December 31, 2000	
	%	USD	%	USD	%	USD	%	USD	%	USD	%	USD	%	USD
Capital Goods	7.00	1,360.23	1.47	284.73	5.53	1,075.50	5.43	905.40	5.17	724.50	4.52	526.05	0.00	0.00
Conglomerates	3.00	582.96	1.08	209.88	1.92	373.08	0.06	10.38	0.04	5.88	0.29	33.54	0.00	0.00
Consumer Non-Cyclical	1.00	194.32	-0.85	-165.05	1.85	359.37	2.03	338.25	2.40	336.27	4.34	506.00	0.00	0.00
Energy	0.00	0.00	0.00	0.00	0.00	0.00	0.00	0.00	0.00	0.00	20.64	2,404.38	6.21	492.44
group	35.00	6,801.17	3.86	749.11	31.14	6,052.06	35.09	5,855.47	35.56	4,987.61	19.26	2,243.96	20.41	1,618.56
Healthcare	12.00	2,331.83	-3.36	-653.17	15.36	2,985.00	16.14	2,694.00	19.51	2,736.00	0.00	0.00	0.00	0.00
Services	40.00	7,772.76	-1.89	-366.44	41.89	8,139.20	39.00	6,509.20	34.53	4,842.38	12.24	1,425.50	0.00	0.00
Technology	2.00	388.64	-0.30	-59.06	2.30	447.70	2.26	376.44	2.79	391.71	38.71	4,509.99	73.38	5,820.16
Total	100.00	19,431.91	0.00	0.00	100.00	19,431.91	100.00	16,689.14	100.00	14,024.35	100.00	11,649.42	100.00	7,931.16

Period Benchmarks & Returns	01/01/04 - 31/12/04	01/01/03 - 31/12/03	01/01/02 - 31/12/02	01/01/01 - 31/12/01	01/01/00 - 31/12/00
Dow Jones 65 Composite	2.52%	26.35%	-17.88%	-12.82%	8.10%
NASDAQ Composite	-3.51%	50.01%	-31.53%	-21.05%	-26.56%
Standard and Poor's 500	-0.78%	26.38%	-23.37%	-13.04%	-5.74%
Aggregate Portfolio Return (Gross of Fees)	-10.88%	73.21%	-25.59%	-35.74%	36.74%
Aggregate Portfolio Return (Net of Advisory & Custody Fees)	-10.88%	73.21%	-25.59%	-35.74%	36.74%



Platinum Demo Fund
 12345 S. Expressway M/S 3102
 Dallas, TX 65432
 United States of America

Performance and Capital Summary

January 01, 2002 - December 31, 2004

Platinum Demo Fund
 12345 S. Expressway M/S 3102
 Dallas, TX 65432
 United States of America

Unit Price Summary

	Beginning		Ending		Change	
	Unit price	Market value	Unit price	Market value	Unit price	Market value
From 01/01/2002	11.630670	11,630.67	47.918270	47,918.27	312.00%	312.00%
Quarter to Date (From 10/01/2004)	47.918270	47,918.27	47.918270	47,918.27	0.00%	0.00%
YTD (From 01/01/2004)	26.058500	26,058.50	47.918270	47,918.27	83.89%	83.89%
Since Inception (03/08/2000)	1.000000		47.918270	47,918.27	4,691.83%	

Capital Summary

	From 01/01/2002 to 12/31/2004	Quarter to Date	Year to Date	Inception 03/08/2000 to Date
Beginning Equity	11,630.67	47,918.27	26,058.50	0.00
Deposits	34,660.00	0.00	27,000.00	50,860.00
Dividend	12.24	0.00	0.00	118.33
Expense	-42.00	0.00	0.00	-291.50
Income	0.00	0.00	0.00	31.84
LTCG	-2,683.84	0.00	427.92	-3,398.93
STCG	-571.33	0.00	1,233.05	-571.33
Unrealized Gain	4,912.53	0.00	-6,801.20	2,656.64
Withdrawals	0.00	0.00	0.00	1,486.78
Gross Capital Balance	47,918.27	47,918.27	47,918.27	47,918.27
Profit / Loss	1,627.60	0.00	-5,140.23	-1,454.95
Gross Return	6.47%	0.00%	-10.88%	-6.96%
Ending Net Capital Balance	47,918.27	47,918.27	47,918.27	47,918.27
Net Profit / Loss	1,627.60	0.00	-5,140.23	-1,454.95
Net Return	6.47%	0.00%	-10.88%	-6.96%
Dow Jones 65 Composite	6.36%	0.58%	2.52%	0.24%

Note: The above amounts are unaudited and are not to be used for income tax purposes

11/17/2008 16:48:30



Platinum Demo Fund
 12345 S. Expressway M/S 3102
 Dallas, TX 65432
 United States of America

Assets by Holding Period

June 16, 2004

Account: **UBS**

Assets held one year or less (short term capital gain or STCG)

Security/Option	Block #	Born date	Days held	Shares/Contracts	Cost basis	Value	Gain
WMFAN	401	08/10/03	311	5	53.00	150.00	97.00
AVAYA INC	501	08/11/03	310	-100.000000	-165.05	-1,583.00	-1,417.95
Bed Bath & Beyond Inc	701	08/12/03	309	-100.000000	-3,295.05	-3,726.00	-430.95
WMFMC	601	08/21/03	300	3	274.95	315.00	40.05
MICROSOFT CORP	802	09/12/03	278	100.000000	1,000.00	2,623.00	1,623.00
FIRSTAR CORP NEW WISC	901	05/20/04	27	500.000000	18,015.00	19,080.00	1,065.00
Total:					15,882.85	16,859.00	976.15

Assets held more than 1 year (long term capital gain or LTCG)

Security/Option	Block #	Born date	Days held	Shares/Contracts	Cost basis	Value	Gain
WHOLE FOODS MARKET INC	1	05/14/00	1494	22.000000	987.95	1,892.00	904.05
LUCENT TECHNOLOGIES	1	06/21/00	1456	16.000000	1,031.38	57.12	-974.26
AVAYA INC	1102	06/21/00	1456	1.000000	23.22	15.83	-7.39
CVS CORP	7	12/17/00	1277	15.000000	494.01	625.20	131.19
ORACLE CORP	10	02/14/01	1218	10.000000	324.17	114.00	-210.17
CMGI INC	11	03/17/01	1187	6.000000	753.45	11.82	-741.63
PFIZER INCORPORATED	12	05/09/01	1134	11.000000	516.14	388.74	-127.40
AT&T CORP	14	06/13/01	1099	10.000000	359.95	165.80	-194.15
BORDERS GROUP INC	15	06/19/01	1093	45.000000	777.14	1,027.35	250.21
FIRSTAR CORP NEW WISC	16	08/18/01	1033	30.000000	733.08	1,144.80	411.72
JOHNSON CONTROLS INC	18	10/23/01	967	14.000000	812.95	754.88	-58.07
Lowe`s Companies, Inc	202	07/12/02	705	70.000000	2,599.00	3,749.90	1,150.90
Medtronic	302	08/17/02	669	60.000000	3,099.00	2,874.00	-225.00
Bed Bath & Beyond Inc	102	09/10/02	645	100.000000	3,069.00	3,726.00	657.00
Total:					15,580.45	16,547.44	966.99

11/17/2008 16:55:05



Platinum Demo Fund
 12345 S.Expressway M/S 3102
 Dallas, TX 65432
 United States of America

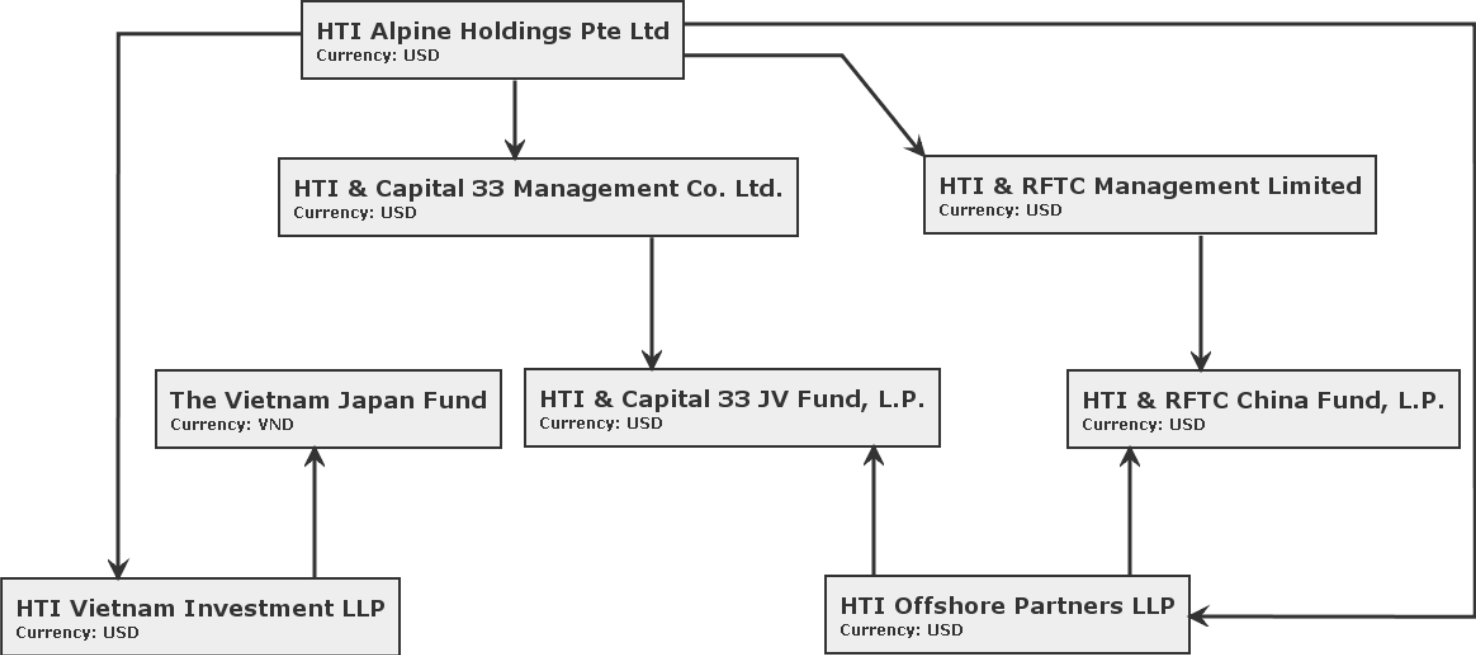
Commitments: Investors vs. Investments

March 01, 2008 - October 31, 2008

Balances as of	Committed Capital				Commitments Outstanding	
	Investors	Investments	Balance	% T	Investors	Investments
Mar, 2008	2,450,000.00	0.00	2,450,000.00	0.00 %	400,000.00	0.00
Apr, 2008	2,450,000.00	2,760,000.00	(310,000.00)	112.65 %	400,000.00	2,269,688.13
May, 2008	2,700,000.00	3,930,000.00	(1,230,000.00)	145.56 %	385,300.00	3,162,605.93
Jun, 2008	5,000,000.00	3,930,000.00	1,070,000.00	78.60 %	385,300.00	2,127,174.06
Jul, 2008	5,000,000.00	5,080,000.00	(80,000.00)	101.60 %	385,300.00	2,276,843.12
Aug, 2008	5,000,000.00	5,080,000.00	(80,000.00)	101.60 %	385,300.00	1,823,237.53
Sep, 2008	5,000,000.00	5,430,000.00	(430,000.00)	108.60 %	385,300.00	1,112,111.30
Oct, 2008	5,000,000.00	5,730,000.00	(730,000.00)	114.60 %	385,300.00	623,430.07

11/18/2008 15:48:21

FundCount Sample Reports: Portfolio: Fund Structure (Master - Feeder)



FundCount Sample Reports: Portfolio Transactions: Wash Sale Wizard



Demo Fund
12345 S. Expressway M/S 3102
Dallass, TX 65432
United States of America

Wash sale Wizard

for period: 08/15/2005 - 05/31/2006

AMERICAN PWR CONVERSION CORP

Date	Transaction	Block	STCG	LTCG	Disallowed loss
05/24/06	Sell of AMERICAN PWR CONVERSION CORP, Fidelity account, 05/24/2006 settlement date, 5.000000sh./ct., inventory method for long positions: FIFO, 95.75, 4.79 comm., 0.01 fee, YOU SOLD , ,	Long block #4 of AMERICAN PWR CONVERSION CORP	7.98		7.98

Total disallowed loss for AMERICAN PWR CONVERSION CORP: 7.98

0028249DI

Date	Transaction	Block	STCG	LTCG	Disallowed loss
03/21/06	Buy of 0028249DI, Fidelity account, 03/21/2006 settlement date, 5.000000sh./ct., inventory method for short positions: FIFO, 375.00, 15.00 comm.	Short block #1 of 0028249DI	177.51		106.50

Total disallowed loss for 0028249DI: 106.50

3COM CORP

Date	Transaction	Block	STCG	LTCG	Disallowed loss
03/07/06	Sell of 3COM CORP, Fidelity account, 03/07/2006 settlement date, 1,500.000000sh./ct., inventory method for long positions: FIFO, 6,750.00, 25.45 comm., 0.21 fee	Long block #2 of 3COM CORP	115.06		115.06

Total disallowed loss for 3COM CORP: 115.06

EMULEX CORP COM NEW

Date	Transaction	Block	STCG	LTCG	Disallowed loss
05/30/06	Sell of EMULEX CORP COM NEW, Fidelity account, 05/30/2006 settlement date, 500.000000sh./ct., inventory method for long positions: FIFO, 8,750.00, 17.95 comm., 0.27 fee, YOU SOLD	Long block #1 of EMULEX CORP COM NEW	71.17		71.17

Total disallowed loss for EMULEX CORP COM NEW: 71.17

SYMANTEC CORP

Date	Transaction	Block	STCG	LTCG	Disallowed loss
03/07/06	Sell of SYMANTEC CORP, Fidelity account, 03/07/2006 settlement date, 1,000.000000sh./ct., inventory method for long positions: FIFO, 15,750.00, 17.95 comm., 0.49 fee	Long block #4 of SYMANTEC CORP	186.39		186.39

Total disallowed loss for SYMANTEC CORP: 186.39

KROGER CO

Date	Transaction	Block	STCG	LTCG	Disallowed loss
03/13/06	Sell of KROGER CO, Fidelity account, 03/13/2006 settlement date, 500.000000sh./ct., inventory method for long positions: FIFO	Long block #1 of KROGER CO	5,870.95		5,870.95
03/13/06	Sell of KROGER CO, Fidelity account, 03/13/2006 settlement date, 500.000000sh./ct., inventory method for long positions: FIFO	Long block #2 of KROGER CO	3,905.95		3,905.95

Total disallowed loss for KROGER CO: 9,776.90

AUDIBLE INC

Date	Transaction	Block	STCG	LTCG	Disallowed loss
05/24/06	Sell of AUDIBLE INC, Fidelity account, 05/24/2006 settlement date, 400.000000sh./ct., inventory method for long positions: FIFO, 3,856.00, 17.95 comm., 0.12 fee, YOU SOLD , ,	Long block #1 of AUDIBLE INC	1,324.02		993.01

Total disallowed loss for AUDIBLE INC: 993.01

TRIAD HOSPS INC

Date	Transaction	Block	STCG	LTCG	Disallowed loss
02/17/06	Sell of TRIAD HOSPS INC, Fidelity account, 02/17/2006 settlement date, 400.000000sh./ct., inventory method for long positions: FIFO, 16,000.00, 17.95 comm., 0.50 fee	Long block #1 of TRIAD HOSPS INC	18.40		18.40

Total disallowed loss for TRIAD HOSPS INC: 18.40

Total disallowed loss for all instruments: 11,275.42

11/24/2008 16:47:06



Platinum Demo Fund
 12345 S. Expressway M/S 3102
 Dallas, TX 65432
 United States of America

Portfolio Reconciliation

as of October 31, 2008

Account: **Interactive Brokers(U470344)**

Instrument name	Ticker	Position	Shares / contracts			Value		
			Reconciliation	Current	Difference	Reconciliation	Current	Difference
ALUMINUM CORP OF CHINA-ADR	ACH	Short	-300.000000	-5,400.000000	5,100.000000	-2,814.00	-50,652.00	47,838.00
ALVARION LTD	ALVR	Short	-100.000000	-1,925.000000	1,825.000000	-347.00	-6,679.75	6,332.75
CUMMINS INC	CMI	Short	-100.000000	-1,775.000000	1,675.000000	-2,615.00	-46,416.25	43,801.25
DELTA PETROLEUM CORP	DPTR	Short	-100.000000	-5,050.000000	4,950.000000	-940.00	-47,470.00	46,530.00
MOTOROLA INC	MOT	Short	-100.000000	-9,750.000000	9,650.000000	-537.00	-52,357.50	51,820.50
99 CENTS ONLY STORES	NDN	Short	-100.000000	-4,200.000000	4,100.000000	-1,220.00	-51,240.00	50,020.00
PROSHARES ULTRASHORT S&P500	SDS	Short	-20.000000	-120.000000	100.000000	-1,683.80	-10,102.80	8,419.00
DIGI INTERNATIONAL INC	DGII	Long	100.000000	775.000000	-675.000000	1,024.00	7,936.00	-6,912.00
DIVX INC	DIVX	Long	200.000000	1,050.000000	-850.000000	1,396.00	7,329.00	-5,933.00
RADVISION LTD	RVSN	Long	100.000000	350.000000	-250.000000	555.00	1,942.50	-1,387.50
VIRGIN MEDIA INC	VMED	Long	1.000000	9,450.000000	-9,449.000000	5.76	54,432.00	-54,426.24
Total: 11 difference(s)						-7,176.04	-193,278.80	186,102.76

11/18/2008 16:06:11

FundCount Sample Reports: Portfolio Transactions: Transaction Summary



Platinum Demo Fund.
12345 Expressway M/S 3102
Dallas, 65432
United States of America

Transaction Summary June 29, 2007 - November 17, 2007

Account: Pursuit Opportunity Fund I Master LTD
Buy, sell, transfer, stock splits, spinoff & mergers

Date	Ticker	Name	Type	Units change	Amount	Cost change	Cost running	Price	Commission	Mortgage loan interest	Unrealized Gain
11/17/07	REP	REPSOL YPF S.A.	Buy	1,255.000000	30,019.60	30,019.60	30,019.60	23.9000	25.10		-25.10
11/17/07	TKR	TIMKEN CO	Buy	3,560.000000	162,549.60	162,549.60	192,569.20	45.6500	35.60		-35.60
				Totals:	192,569.20	192,569.20	192,569.20		60.70		-60.70

Records for all the accounts

Buy, sell, transfer, stock splits, spinoff & mergers

Date	Ticker	Name	Type	Units change	Amount	Cost change	Cost running	Price	Commission	Mortgage loan interest	Unrealized Gain
06/29/07	RALI 2007-QS4 M3	Home Equity #RALI 2007-QS4 M3, 6.3482872%, 30 year(s)	Buy	3,174,500.000000		2,158,367.82	2,158,367.82	68.2969			
06/29/07	RALI 2007-QS4 B1	Home Equity #RALI 2007-QS4 B1, 6.348004%, 30 year(s)	Buy	2,054,100.000000		878,026.45	3,036,394.26	42.9375			
07/10/07	RFMSI 2007-SA3 B1	Home Equity #RFMSI 2007-SA3 B1, 5.80919%, 30 year(s)	Buy	727,400.000000		600,955.20	3,637,349.46	82.6250			
07/24/07	RALI 2007-QS9 AV	Home Equity #RALI 2007-QS9 AV, 0.414%, 30 year(s)	Buy	58,033,726.000000		680,555.70	4,317,905.17	1.1727			
08/22/07	WEBS 2006-1A B1L	CDO #WEBS 2006-1A B1L, 8.755%, 40 year(s)	Buy	5,000,000.000000		825,000.00	5,142,905.17	16.5000			
08/25/07	RALI 2007-QS4 B1	Home Equity #RALI 2007-QS4 B1, 6.348004%, 30 year(s)	Payoff payment			-756.77	5,142,148.39			1,005.73	
08/27/07	RFMSI 2007-SA3 B1	Home Equity #RFMSI 2007-SA3 B1, 5.80919%, 30 year(s)	Payoff payment			-59.15	5,142,089.24			12.44	
08/27/07	RALI 2007-QS4 M3	Home Equity #RALI 2007-QS4 M3, 6.3482872%, 30 year(s)	Payoff payment			-1,860.31	5,140,228.93			863.54	
08/28/07	HARTS 2007-1A B1	CDO #HARTS 2007-1A B1, 10.49%, 40 year(s)	Buy	4,625,000.000000		1,572,270.76	6,712,499.69	34.0000			
08/28/07	SHERW 2006-3A C	CDO #SHERW 2006-3A C, 12.11%, 40 year(s)	Buy	7,000,000.000000		265,371.71	6,977,871.40	4.1875			
08/28/07	RALI 2007-QS9 AV	Home Equity #RALI 2007-QS9 AV, 0.414%, 30 year(s)	Payoff payment				6,977,871.40				
09/06/07	ACABS 2007-2A B1	CDO #ACABS 2007-2A B1, 12.862%, 40 year(s)	Buy	15,000,000.000000		4,556,250.00	11,534,121.40	30.3750			
09/25/07	RALI 2007-QS4 B1	Home Equity #RALI 2007-QS4 B1, 6.348004%, 30 year(s)	Payoff payment			-1,311.09	11,532,810.32			1,742.39	
09/25/07	RALI 2007-QS4 M3	Home Equity #RALI 2007-QS4 M3, 6.3482872%, 30 year(s)	Payoff payment			-3,222.92	11,529,587.39			1,496.07	
09/25/07	RALI 2007-QS9 AV	Home Equity #RALI 2007-QS9 AV, 0.414%, 30 year(s)	Payoff payment				11,529,587.39				
09/25/07	RFMSI 2007-SA3 B1	Home Equity #RFMSI 2007-SA3 B1, 5.80919%, 30 year(s)	Payoff payment			-58.49	11,529,528.90			12.30	
09/28/07	RALI 2007-QS11 AV	Home Equity #RALI 2007-QS11 AV, 0.3372%, 30 year(s)	Buy	152,918,084.500000		1,201,936.14	12,731,465.05	0.7860			
11/17/07	359369311-38	#359369311-38, 340,091.68, 12.49%, 8446 day(s)	Buy mortgage loan	1.000000		313,860.27	13,045,325.32				
11/17/07	359515110-52	#359515110-52, 57,660.45, 9.95%, 4063 day(s)	Buy mortgage loan	1.000000		52,977.97	13,098,303.29				
11/17/07	810000583-52	#810000583-52, 66,954.04, 8.5%, 10272 day(s)	Buy mortgage loan	1.000000		51,268.35	13,149,571.64				
				Totals:	0.00	13,149,571.64	13,149,571.64			5,132.46	
				Totals:	192,569.20	13,342,140.84	13,342,140.84		60.70	5,132.46	-60.70

11/18/2008 13:05:43



Platinum Demo Fund
 12345 S. Expressway M/S 3102
 Dallas, TX 65432
 United States of America

Schedule D Capital Gains and Losses

03/08/00 - 12/31/04

UBS, Wells-Fargo Bank

Part I Short-Term Capital Gains and Losses - Assets Held One Year or Less

(a) Description of Property	(b) Date acquired	(c) Date sold	(d) Sales price	(e) Cost basis	(f) Gain (loss)
8.00sh EMC CORP MASS	10/17/01	07/21/02	212.41	788.45	(576.04)
17.00sh EMC CORP MASS	02/16/02	07/21/02	451.37	951.82	(500.45)
41.00sh SUN MICROSYSTEMS INC	12/14/01	08/08/02	581.00	1,308.89	(727.89)
400.00sh FIRSTAR CORP NEW WISC	05/20/04	08/13/04	15,480.00	14,412.00	1,068.00
100.00sh AVAYA INC	08/11/03	08/16/04	165.05	0.00	165.05
Totals:			16,889.83	17,461.16	(571.33)
Capital Gain distributions					0.00
Net short-term capital gain (loss)					(571.33)

Part II Assets Held More Than One Year

(a) Description of Property	(b) Date acquired	(c) Date sold	(d) Sales price	(e) Cost basis	(f) Gain (loss)
32.00sh COMPUWARE CORP	09/14/00	09/19/01	286.03	994.95	(708.92)
1.00sh AVAYA INC	06/21/00	10/02/01	6.05	12.22	(6.17)
26.00sh HASBRO	12/15/00	01/02/02	264.54	494.33	(229.79)
42.00sh CISCO SYSTEMS INC	10/14/00	06/23/02	588.60	1,496.51	(907.91)
22.00sh CISCO SYSTEMS INC	12/15/00	06/23/02	308.31	1,065.64	(757.33)
6.00sh CISCO SYSTEMS INC	02/14/01	06/23/02	84.09	418.76	(334.67)
14.00sh EMC CORP MASS	02/08/01	07/21/02	371.71	819.95	(448.24)
10.00sh EMC CORP MASS	06/13/01	07/21/02	265.51	699.33	(433.82)
30.00sh FIRSTAR CORP NEW WISC	08/18/01	08/13/04	1,161.00	733.08	427.92
Totals:			3,335.84	6,734.77	(3,398.93)
Capital Gain distributions					0.00
Net long-term capital gain (loss)					(3,398.93)

Part III Mark-to-Market year end adjustments

(a) Description of Property	(b) Date acquired	(c) Date sold	(d) Sales price	(e) Cost basis	(f) Gain (loss)
Totals:					0.00
Net Mark-to-Market adjustments gain (loss)					0.00

11/17/2008 20:51:51

FundCount Sample Reports: Portfolio Transactions: Investment History



Investment History February 16, 2001 - August 25, 2004

Type	Date	Units change	Units running	Cost change	Cost running	Average cost	Value change	Value running	Commission	Fee	Unrealized Gain	Description
[-] Bed Bath & Beyond Inc (BBBY)												
[-] Account: UBS												
Buy	09/10/02	100.000000	100.000000	3,069.00	3,069.00	30.69	3,050.00	3,050.00	12.00	7.00	-19.00	Buy of Bed Bath & Beyond Inc, UBS account, 09/10/2002 settlement date, block #102, 100.000000sh./ct., inventory method for short positions: Do not close short positions, 3,050.00, 12.00 comm., 7.00 fee
Valuation	09/18/02		100.000000		3,069.00	30.69	484.00	3,534.00			484.00	ValuationBed Bath & Beyond Inc on UBS @ 35.34000000
Valuation	12/31/02		100.000000		3,069.00	30.69	-81.00	3,453.00			-81.00	ValuationBed Bath & Beyond Inc on UBS @ 34.53000000
Valuation	05/30/03		100.000000		3,069.00	30.69	726.00	4,179.00			726.00	ValuationBed Bath & Beyond Inc on UBS @ 41.79000000
Sell	08/12/03	-100.000000		-3,295.05	-226.05		-4,179.00			4.95	-883.95	Sell of Bed Bath & Beyond Inc, UBS account, 08/12/2003 settlement date, block #701, 100.000000sh./ct., inventory method for long positions: Do not close long positions, 33.00000000 per share/contract, 4.95 comm.
Valuation	10/10/03				-226.05							ValuationBed Bath & Beyond Inc on UBS @ 40.26000000
Valuation	02/27/04				-226.05							ValuationBed Bath & Beyond Inc on UBS @ 40.93000000
Valuation	05/28/04				-226.05							ValuationBed Bath & Beyond Inc on UBS @ 37.26000000
Valuation	06/30/04				-226.05							ValuationBed Bath & Beyond Inc on UBS @ 38.45000000
Account totals					-226.05	-226.05			16.95	7.00	226.05	
[-] Account: Wells-Fargo Bank												
No transactions have been found for the selected period												
Instrument totals					-226.05	-226.05			16.95	7.00	226.05	

11/18/2008 14:25:05

FundCount Sample Reports: Portfolio Transactions: Unsettled Trades



Platinum Demo Fund
 12345 Expressway M/S 3102
 Dallas, 65432
 United States of America

Unsettled trades

as of November 18, 2008

Account: **Money Market Fiduciary**

Trade Date	Settlement Date	Ticker	Name	Type	Units change	Amount	Cost change	Price Commission	Fee	Accrued interest	LTCG
07/26/07	04/07/09	SEP0710YrTNotes	SEP0710YrTNotes	Sell short	-100.000000	-215.00	215.00	213.00	2.00		
08/22/07	12/31/08	SEP0710YrTNotes	SEP0710YrTNotes	Buy	700.000000	-1,505.00	1,505.00	1,491.00	14.00		
08/22/07	12/25/08	DEC0710YrTNotes	DEC0710YrTNotes	Sell short	-700.000000	-1,505.00	1,505.00	1,491.00	14.00		
						Totals: -3,225.00	3,225.00	3,195.00	30.00	0.00	

Records for all the accounts

Trade Date	Settlement Date	Ticker	Name	Type	Units change	Amount	Cost change	Price Commission	Fee	Accrued interest	LTCG
05/06/05	12/25/08	MID OCEAN 00-1A 2L	CDO #MID OCEAN 00-1A 2L, 0.85%, 35 year(s)	Buy	5,000,000.000000		2,025,000.00			38,785.19	
05/15/05	05/14/09	FLRT1995-B	Franchise #FLRT1995-B, 9.3343%, 11 semi-year(s)	Buy	22,000,000.000000		2,525,977.28				
07/25/07	12/05/08	CWALT 2005-J11 B3	Home Equity #CWALT 2005-J11 B3, 5.7386%, 30 year(s)	Sell	-26.410000		-22.91			15,105.12	0.58
07/25/07	11/30/08	CWALT 2005-J11 B4	Home Equity #CWALT 2005-J11 B4, 5.7386%, 30 year(s)	Sell	-23.760000		-15.28			11,750.28	3.88
07/26/07	05/12/09	VERT 2007-1A B2	CDO #VERT 2007-1A B2, 12.35%, 40 year(s)	Buy	7,550,000.000000		2,676,239.06			53,988.04	
07/27/07	03/20/09	VRGO 2006-1A B2	CDO #VRGO 2006-1A B2, 12.32%, 40 year(s)	Buy	5,500,000.000000		1,203,409.41			108,479.75	
						Totals: 0.00	8,430,587.56	0.00	0.00	228,108.38	4.46
						Totals: -3,225.00	8,433,812.56	3,195.00	30.00	228,108.38	4.46

11/18/2008 14:51:36



Platinum Demo Fund
 12345 S. Expressway M/S 3102
 Dallas, TX 65432
 United States of America

Dividends pending

as of November 18, 2008

Account: UBS

Date accrued	Payment date	Ex-dividend date	Ticker	Name	Type	Amount	Foreign tax paid	Qualifying
11/18/2008	12/31/2008	11/18/2008	ASND	ASCEND COMMUNICATIONS	Dividend	100.0	0.0	Automatically
11/18/2008	12/31/2008	11/18/2008	AV	AVAYA INC	Dividend	100.0	0.0	Automatically
11/18/2008	12/31/2008	11/18/2008	BBBY	Bed Bath & Beyond Inc	Dividend	100.0	0.0	Automatically
11/18/2008	12/31/2008	11/18/2008	ASND	ASCEND COMMUNICATIONS	Dividend	1000.0	0.0	Automatically
11/18/2008	12/31/2008	11/18/2008	AV	AVAYA INC	Dividend	1000.0	0.0	Automatically
11/18/2008	12/31/2008	11/18/2008	BBBY	Bed Bath & Beyond Inc	Dividend	1000.0	0.0	Automatically
Account totals:						3300.0	0.0	

11/18/2008 15:55:19

FundCount Sample Reports: Portfolio Transactions: Price History



Platinum Demo Fund
 12345 S. Expressway M/S 3102
 Dallas, TX 65432
 United States of America

Price History

Account: Wells-Fargo Bank

Account: UBS

Name	09/12/00*	02/04/01*	10/12/01	12/31/02*	08/16/04
(T) AT&T CORP				26.11000000	
(AV) AVAYA INC				2.45000000	0.00000000 -100.0%
(BBBY) Bed Bath & Beyond Inc				34.53000000	
(BGP) BORDERS GROUP INC				16.10000000	
(CSCO) CISCO SYSTEMS INC		121.12500000			
(CMGI) CMGI INC				0.98000000	
(CPWR) COMPUWARE CORP		22.43750000			
(CVS) CVS CORP		36.50000000		24.97000000	-31.6%
(FSR) FIRSTAR CORP NEW WISC				36.50000000	
(HAS) HASBRO		15.87500000			
(JCI) JOHNSON CONTROLS INC				80.17000000	
(LOW) Lowe's Companies, Inc				37.50000000	
(LU) LUCENT TECHNOLOGIES	67.43750000	57.00000000	-15.5%	1.26000000	-97.8%
(MDT) Medtronic				45.60000000	
(ORCL) ORACLE CORP			25.43750000	10.80000000	-57.5%
(PFE) PFIZER INCORPORATED				30.57000000	
(WFMI) WHOLE FOODS MARKET INC	34.81250000	45.75000000	+ 31.4%	52.73000000	+ 15.3%

* - a 'Valuation date' - all positions open as of that date have been valued

11/17/2008 20:50:54



Platinum Demo Fund
 12345 S.Expressway M/S 3102
 Dallas, TX 65432
 United States of America

FX Rates History

January 04, 2007 - April 30, 2008

FX	01/04/07	12/31/07		01/04/08		01/31/08		02/29/08	
AUD to EUR									
AUD to USD	0.8711484350	0.8757000000	+ 0.5%	0.8711484350	-0.5%	0.8956961799	+ 2.8%	0.9308040285	+ 3.9%
EUR to AUD									
EUR to USD	1.4744478193	1.4590500000	-1.0%	1.4744478193	+ 1.1%	1.4861049190	+ 0.8%	1.5180035218	+ 2.1%
USD to AUD	1.1479100000	1.1419435880	-0.5%	1.1479100000	+ 0.5%	1.1164500000	-2.7%	1.0743400000	-3.8%
USD to EUR	0.6782200000	0.6853774716	+ 1.1%	0.6782200000	-1.0%	0.6729000000	-0.8%	0.6587600000	-2.1%

FX	03/31/08	04/30/08	
AUD to EUR			
AUD to USD	0.9127502077	0.9356024812	+ 2.5%
EUR to AUD			
EUR to USD	1.5773617048	1.5583606046	-1.2%
USD to AUD	1.0955900000	1.0688300000	-2.4%
USD to EUR	0.6339700000	0.6417000000	+ 1.2%

11/18/2008 16:05:10



Platinum Demo Fund
 12345 S.Expressway M/S 3102
 Dallas, TX 65432
 United States of America

FX Deals

as of December 31, 2007 - March 31, 2008

EUR/USD									
Name	Type	Deal	Trade date	EUR	Price	USD	Realized Gain	Unrealized Gain	Price as of
USD/EUR 1	Forward	open	12/31/07	211,264,576.73	1.441510	-304,540,000.00			
USD/EUR 2	Forward	open	12/31/07	37,973,453.29	1.440480	-54,700,000.00			
USD/EUR 3	Forward	open	12/31/07	-756,263.80	1.441296	1,090,000.00			
Spot FX	Spot FX		01/24/08	75,000,000.00	1.470000	110,250,000.00			
USD/EUR 4	Forward	open	01/25/08	-32,406,762.62	1.471915	47,700,000.00			
USD/EUR 5	Forward	open	01/25/08	-206,018,077.06	1.472929	303,450,000.00			
USD/EUR 6	Forward	open	01/25/08	32,426,920.45	1.471000	-47,700,000.00			
USD/EUR 7	Forward	open	01/25/08	206,148,097.80	1.472000	-303,450,000.00			
USD/EUR 8	Forward	open	01/25/08	-1,217,037.16	1.470785	1,790,000.00			
USD/EUR 1	Forward	close	01/29/08	-206,222,306.40	1.476756	304,540,000.00	5,042,270.33		
USD/EUR 2	Forward	close	01/29/08	-37,040,652.00	1.476756	54,700,000.00	932,801.29		
USD/EUR 3	Forward	close	01/29/08	738,104.40	1.476756	-1,090,000.00	-18,159.40		
USD/EUR 4	Forward	close	01/29/08	32,300,532.00	1.476756	-47,700,000.00	-106,230.62		
USD/EUR 5	Forward	close	01/29/08	205,484,202.00	1.476756	-303,450,000.00	-533,875.06		
Spot FX	Spot FX		02/24/08	100,000,000.00	1.480000	148,000,000.00			
USD/EUR 9	Forward	open	02/25/08	-205,006,495.76	1.480197	303,450,000.00			
USD/EUR 10	Forward	open	02/25/08	-46,277,842.71	1.480190	68,500,000.00			
USD/EUR 11	Forward	open	02/25/08	205,172,413.79	1.479000	-303,450,000.00			
USD/EUR 12	Forward	open	02/25/08	46,315,077.76	1.479000	-68,500,000.00			
USD/EUR 13	Forward	open	02/25/08	-2,732,129.57	1.478700	4,040,000.00			
USD/EUR 6	Forward	close	02/27/08	-31,590,279.00	1.509958	47,700,000.00	836,641.45		
USD/EUR 7	Forward	close	02/27/08	-200,965,831.50	1.509958	303,450,000.00	5,182,266.30		
USD/EUR 8	Forward	close	02/27/08	1,185,463.30	1.509958	-1,790,000.00	-31,573.86		
USD/EUR 9	Forward	close	02/27/08	200,965,831.50	1.509958	-303,450,000.00	-4,040,664.26		
USD/EUR 10	Forward	close	02/27/08	45,365,495.00	1.509958	-68,500,000.00	-912,347.71		
Spot FX	Spot FX		03/24/08	50,000,000.00	1.550000	77,500,000.00			
USD/EUR 14	Forward	open	03/25/08	-43,955,338.81	1.558400	68,500,000.00			
USD/EUR 15	Forward	open	03/25/08	-192,175,249.76	1.558005	299,410,000.00			
USD/EUR 16	Forward	open	03/25/08	565,410.98	1.556390	-880,000.00		9,522.05	0.6317
USD/EUR 17	Forward	open	03/25/08	44,012,104.94	1.556390	-68,500,000.00		741,205.29	0.6317
USD/EUR 18	Forward	open	03/25/08	192,422,879.18	1.556000	-299,410,000.00		3,287,987.73	0.6317
USD/EUR 11	Forward	close	03/27/08	-192,074,746.50	1.579854	303,450,000.00	13,097,667.29		
USD/EUR 12	Forward	close	03/27/08	-43,358,445.00	1.579854	68,500,000.00	2,956,632.76		
USD/EUR 13	Forward	close	03/27/08	2,557,198.80	1.579854	-4,040,000.00	-174,930.77		
USD/EUR 14	Forward	close	03/27/08	43,358,445.00	1.579854	-68,500,000.00	-596,893.81		
USD/EUR 15	Forward	close	03/27/08	189,517,547.70	1.579854	-299,410,000.00	-2,657,702.06		
USD/EUR 19	Forward	open	03/31/08	7,137,655.05	1.583153	-11,300,000.00		-464.16	0.6317

FundCount Sample Reports: Portfolio Transactions: Cash Flow History & Projection



Platinum Demo Fund
12345 S. Expressway M/S 3102
Dallas, TX 65432
United States of America

Accounts Journal

July 01, 2008 - December 31, 2008

Date	Debit	Credit	Morgan Stanley	Remarks	Transaction
07/08/08		9,641.86	-9,641.86		G/L entry, credit Morgan Stanley acct., 9,641.86\$
07/09/08		50,000.00	-59,641.86		G/L entry, credit Morgan Stanley acct., 50,000.00\$
07/11/08		25,000.00	-84,641.86		G/L entry, credit Morgan Stanley acct., 25,000.00\$
07/15/08	865.90		-83,775.96		Payoff payment CDO #31394WMT2, 0.0%, 30 semi-year(s), Morgan Stanleyaccount, 865.90 received, paid t
07/15/08	1,203.57		-82,572.39		Payoff payment CDO #31394WXN3, 0.0%, 30 semi-year(s), Morgan Stanleyaccount, 1,203.57 received, paid
07/15/08	4,941.33		-77,631.06		Payoff payment CDO #31395KDD2, 0.0%, 30 semi-year(s), Morgan Stanleyaccount, 4,941.33 received, paid
07/15/08	15,124.84		-62,506.22		Payoff payment CDO #31395PTS1, 0.0%, 360 month(s), Morgan Stanleyaccount, 15,124.84 received, paid t
07/15/08	2,106.93		-60,399.29		Payoff payment CDO #31395TOP2, 0.0%, 30 semi-year(s), Morgan Stanleyaccount, 2,106.93 received, paid
07/15/08	2,230.60		-58,168.69		Payoff payment CDO #31395XF91, 0.0%, 30 semi-year(s), Morgan Stanleyaccount, 2,230.60 received, paid
07/15/08	1,965.98		-56,202.71		Payoff payment CDO #31396AYX6, 0.0%, 30 semi-year(s), Morgan Stanleyaccount, 1,965.98 received, paid
07/15/08	1,546.68		-54,656.03		Payoff payment CDO #31396A2J2, 0.0%, 30 semi-year(s), Morgan Stanleyaccount, 1,546.68 received, paid
07/15/08	1.79		-54,654.24		Payoff payment CDO #31394WXN3, 0.0%, 30 semi-year(s), Morgan Stanleyaccount, 1.79 received, paid to
07/15/08	2,053.81		-52,600.43		Payoff payment CDO #31395TOP2, 0.0%, 30 semi-year(s), Morgan Stanleyaccount, 2,053.81 received, paid
07/15/08	1,028.22		-51,572.21		Payoff payment CDO #31395UYZ8, 0.0%, 30 semi-year(s), Morgan Stanleyaccount, 1,028.22 received, paid
07/15/08	1,089.76		-50,482.45		Payoff payment CDO #31395XF91, 0.0%, 30 semi-year(s), Morgan Stanleyaccount, 1,089.76 received, paid
07/15/08	2.37		-50,480.08		Payoff payment CDO #31396AYX6, 0.0%, 30 semi-year(s), Morgan Stanleyaccount, 2.37 received, paid to
07/15/08	2.74		-50,477.34		Payoff payment CDO #31396A2J2, 0.0%, 30 semi-year(s), Morgan Stanleyaccount, 2.74 received, paid to
07/21/08		5,045.45	-55,522.79		Margin Interest, Morgan Stanley account, 5,045.45
07/25/08	1,109.70		-54,413.09		Payoff payment CDO #31393TDL7, 0.0%, 30 semi-year(s), Morgan Stanleyaccount, 1,109.70 received, paid
07/25/08	4,719.00		-49,694.09		Payoff payment CDO #31394BPC2, 0.0%, 360 month(s), Morgan Stanleyaccount, 4,719.00 received, paid to
07/25/08	1.12		-49,692.97		Payoff payment CDO #31393TDL7, 0.0%, 30 semi-year(s), Morgan Stanleyaccount, 1.12 received, paid to
07/28/08		18,500.00	-68,192.97		G/L entry, credit Morgan Stanley acct., 18,500.00\$
08/14/08		1,600.00	-69,792.97	Accounting Fees Paid	G/L entry, credit Morgan Stanley acct., 1,600.00\$, Accounting Fees Paid
08/15/08	869.64		-68,923.33		Payoff payment CDO #31394WMT2, 0.0%, 30 semi-year(s), Morgan Stanleyaccount, 869.64 received, paid t
08/15/08	1,198.22		-67,725.11		Payoff payment CDO #31394WXN3, 0.0%, 30 semi-year(s), Morgan Stanleyaccount, 1,198.22 received, paid
08/15/08	4,924.69		-62,800.42		Payoff payment CDO #31395KDD2, 0.0%, 30 semi-year(s), Morgan Stanleyaccount, 4,924.69 received, paid
08/15/08	15,047.17		-47,753.25		Payoff payment CDO #31395PTS1, 0.0%, 360 month(s), Morgan Stanleyaccount, 15,047.17 received, paid t
08/15/08	2,079.55		-45,673.70		Payoff payment CDO #31395TOP2, 0.0%, 30 semi-year(s), Morgan Stanleyaccount, 2,079.55 received, paid
08/15/08	2,232.21		-43,441.49		Payoff payment CDO #31395XF91, 0.0%, 30 semi-year(s), Morgan Stanleyaccount, 2,232.21 received, paid
08/15/08	1,956.09		-41,485.40		Payoff payment CDO #31396AYX6, 0.0%, 30 semi-year(s), Morgan Stanleyaccount, 1,956.09 received, paid
08/15/08	1,538.89		-39,946.51		Payoff payment CDO #31396A2J2, 0.0%, 30 semi-year(s), Morgan Stanleyaccount, 1,538.89 received, paid
08/15/08	1.80		-39,944.71		Payoff payment CDO #31394WXN3, 0.0%, 30 semi-year(s), Morgan Stanleyaccount, 1.80 received, paid to
08/15/08	369.15		-39,575.56		Payoff payment CDO #31395UYZ8, 0.0%, 30 semi-year(s), Morgan Stanleyaccount, 369.15 received, paid t
08/15/08	2.38		-39,573.18		Payoff payment CDO #31396AYX6, 0.0%, 30 semi-year(s), Morgan Stanleyaccount, 2.38 received, paid to
08/15/08	3.61		-39,569.57		Payoff payment CDO #31396A2J2, 0.0%, 30 semi-year(s), Morgan Stanleyaccount, 3.61 received, paid to
08/21/08		5,739.89	-45,309.46		Margin Interest, Morgan Stanley account, 5,739.89
08/25/08	1,104.78		-44,204.68		Payoff payment CDO #31393TDL7, 0.0%, 30 semi-year(s), Morgan Stanleyaccount, 1,104.78 received, paid
08/25/08	4,750.16		-39,454.52		Payoff payment CDO #31394BPC2, 0.0%, 360 month(s), Morgan Stanleyaccount, 4,750.16 received, paid to
08/25/08	1.12		-39,453.40		Payoff payment CDO #31393TDL7, 0.0%, 30 semi-year(s), Morgan Stanleyaccount, 1.12 received, paid to
08/26/08		18,500.00	-57,953.40	August Monthly Withdrawals	G/L entry, credit Morgan Stanley acct., 18,500.00\$, August Monthly Withdrawals
09/15/08	867.09		-57,086.31		Payoff payment CDO #31394WMT2, 0.0%, 30 semi-year(s), Morgan Stanleyaccount, 867.09 received, paid t
09/15/08	1,201.46		-55,884.85		Payoff payment CDO #31394WXN3, 0.0%, 30 semi-year(s), Morgan Stanleyaccount, 1,201.46 received, paid
09/15/08	4,934.87		-50,949.98		Payoff payment CDO #31395KDD2, 0.0%, 30 semi-year(s), Morgan Stanleyaccount, 4,934.87 received, paid
09/15/08	15,094.67		-35,855.31		Payoff payment CDO #31395PTS1, 0.0%, 360 month(s), Morgan Stanleyaccount, 15,094.67 received, paid t
09/15/08	2,079.55		-33,775.76		Payoff payment CDO #31395TOP2, 0.0%, 30 semi-year(s), Morgan Stanleyaccount, 2,079.55 received, paid
09/15/08	2,226.30		-31,549.46		Payoff payment CDO #31395XF91, 0.0%, 30 semi-year(s), Morgan Stanleyaccount, 2,226.30 received, paid
09/15/08	1,962.11		-29,587.35		Payoff payment CDO #31396AYX6, 0.0%, 30 semi-year(s), Morgan Stanleyaccount, 1,962.11 received, paid
09/15/08	1,543.61		-28,043.74		Payoff payment CDO #31396A2J2, 0.0%, 30 semi-year(s), Morgan Stanleyaccount, 1,543.61 received, paid
09/15/08	1.81		-28,041.93		Payoff payment CDO #31394WXN3, 0.0%, 30 semi-year(s), Morgan Stanleyaccount, 1.81 received, paid to
09/15/08	740.10		-27,301.83		Payoff payment CDO #31395UYZ8, 0.0%, 30 semi-year(s), Morgan Stanleyaccount, 740.10 received, paid t
09/15/08	2.39		-27,299.44		Payoff payment CDO #31396AYX6, 0.0%, 30 semi-year(s), Morgan Stanleyaccount, 2.39 received, paid to
09/15/08	1.92		-27,297.52		Payoff payment CDO #31396A2J2, 0.0%, 30 semi-year(s), Morgan Stanleyaccount, 1.92 received, paid to
09/22/08		5,875.22	-33,172.74		Margin Interest, Morgan Stanley account, 5,875.22
09/25/08	1,107.77		-32,064.97		Payoff payment CDO #31393TDL7, 0.0%, 30 semi-year(s), Morgan Stanleyaccount, 1,107.77 received, paid
09/25/08	4,734.57		-27,330.40		Payoff payment CDO #31394BPC2, 0.0%, 360 month(s), Morgan Stanleyaccount, 4,734.57 received, paid to
09/25/08	1.13		-27,329.27		Payoff payment CDO #31393TDL7, 0.0%, 30 semi-year(s), Morgan Stanleyaccount, 1.13 received, paid to
09/29/08		8,500.00	-35,829.27		G/L entry, credit Morgan Stanley acct., 8,500.00\$
10/16/08		7,138.92	-42,968.19		G/L entry, credit Morgan Stanley acct., 7,138.92\$
10/31/08	20,000.00		-22,968.19		Interest, Morgan Stanley account, 20,000.00
11/05/08	5,000.00		-17,968.19		G/L entry, debit Morgan Stanley acct., 5,000.00\$
11/20/08		3,000.00	-20,968.19	Projection	G/L entry, credit Morgan Stanley acct., 3,000.00\$, Projection
11/30/08	20,000.00		-968.19	Projection	Interest, Morgan Stanley account, 20,000.00, Projection
12/05/08		10,000.00	-10,968.19	Projection	Expense, Morgan Stanley account, 10,000.00, Projection
12/15/08	4,000.00		-6,968.19	Projection	Dividend, Morgan Stanley account, 4,000.00, Projection
12/31/08	50,000.00		43,031.81	Projection	Income, Morgan Stanley account, 50,000.00, Projection
Total	211,573.15	168,541.34	43,031.81		

11/13/2008 22:26:40



Platinum Demo Fund
 12345 S. Expressway M/S 3102
 Dallas, TX 65432
 United States of America

Outstanding Commitments for Investments

April 28, 2008

Instrument Name	04/01/08	04/02/08	04/04/08	04/17/08	04/23/08	04/24/08	04/25/08	04/28/08	Outstanding
DYCOM INDS INC	▷ 310,000.00		26,928.80						283,071.20
ENTROPIC COMMUNIC	▷ 350,000.00				13,839.99	7,543.12	4,770.80	26,194.30	297,651.79
EQUINIX INC	34,487.00	35,525.00		73,632.00					356,356.00
	▷ 500,000.00								
HARRIS STRATEX NE	▷ 600,000.00							18,730.00	581,270.00
PHOTOCHANNEL NWK	61,831.55	87,695.56					33,329.75		817,143.14
	▷ 1,000,000.00								
Total:	96,318.55	123,220.56	26,928.80	73,632.00	13,839.99	7,543.12	38,100.55	44,924.30	2,335,492.13
	▷ 2,760,000.00								

▷ - Commitment

11/18/2008 15:49:35



Contact us for more information:

FundCount LLC

130 Shore Rd # 360
Port Washington, NY 11050

Tel: 1-877-727-5776

Fax: 1-281-220-1364

Web: www.fundcount.com

E-mail: info@fundcount.com

Please contact us to schedule a free live software demo delivered right to your web browser over the Internet. You will be able to speak with our staff member on the phone and ask your questions during the demonstration.