



TANK SUMP



Western Fiberglass offers a complete range of comprehensive, computer designed tank sumps available in multiple diameters and shapes. Unique continuous filament wound construction produces the strongest cylindrical shapes available. Western Fiberglass tank sumps are compatible with all piping systems, approved by major tank manufacturers and by environmental and fire inspectors nationwide.



FEATURES / OPTIONS:

- 30-Year Warranty
- Available With or Without a Bottom
- Multiple Lid Configurations
- Single Wall and Double Wall Now Available
- Standard or Custom Designs



Mascott Equipment Co
Portland Seattle Pasco
(800) 452-5019 (800) 481-7311 (888) 450-7867





TANK SUMPS SINGLE WALL SPECIFICATION

Summary

The Filament wound sump riser and riser reducer shall be installed onto the underground storage tank and in accordance with the manufacturer's installation instructions. The UST sump riser and riser reducer shall provide an open piping termination and inspection/service area that is non-permeable to hydrocarbons, compatible with all fuel blends, and will not hold a static electrical charge. The sump system shall contain environmentally hazardous fluids that might leak from piping terminations, fittings and flex-hoses contained within the sump, require no internal back-fill or bracing and be self supporting. The sump shall be manufactured by Western Fiberglass, Inc.

System Specifications

1.01 System Suitability

The Tank Sump Riser Tube and Riser Reducer Assembly shall:

- A. Attach to the UST manway, bung fitting or containment collar to prevent the intrusion of ground water into the sump assembly.
- B. Be of sufficient size to allow all piping termination's, fittings, equipment, and flex-hoses to be contained within the Sump Assembly.
- C. Provide ample area to allow servicing and inspection of all piping termination's, fittings, equipment, and flex-hoses within the Sump Assembly.
- D. Contain any release of environmental contaminants from the tank fittings and equipment contained within the Sump Assembly.
- E. Provide an interface to the access "street" manway system with sealed water tight or friction "lift-lid" Tank Sump Riser Tube Reducer Assembly.
- F. Be available as a U.L. Listed device if required.

1.02 Construction Specifications

- A. Meet or exceed United States National Bureau of Standards PS 15-69 for Custom Contact-Molded Reinforced-Polyester Chemical-Resistant Process Equipment or U.L. Listing if applicable.
- B. Be constructed of materials that are not harmful to the environment.
- C. Be non-permeable to the hydrocarbons and not weakened by exposure to these materials.
- D. Be suitable for petroleum products and blends including methanol and ethyl alcohol mixtures.
- E. Have a thirty (30) year warranty against corrosion.

1.03 Release Monitoring System shall:

- A. Allow full visual and physical access/inspection of all piping reductions, fittings, hoses, and equipment.
- B. Provide a monitor point for electric monitoring and evacuation of fluids.

1.04 Piping Penetrations

- A. Provide locations for the installations of fluid tight pipe and conduit penetration seals to be installed according to manufacturer's instructions.

Contact Us For More Information!

Mascott Equipment Co

Portland Seattle Pasco
(800) 452-5019 (800) 481-7311 (888) 450-7867



TANK SUMPS DOUBLE WALL SPECIFICATION

Summary

The Double wall Filament wound sump riser and riser reducer shall be installed onto the underground storage tank and in accordance with the manufacturer's installation instructions. The Double Wall UST sump riser and the riser reducer shall provide an open piping termination and inspection/service area that is non-permeable to hydrocarbons, compatible with all fuel blends, and will not hold a static electrical charge. The sump system shall contain environmentally hazardous fluids that might leak from piping terminations, fittings and flex-hoses contained within the sump, require no internal back-fill or bracing and be self supporting. The sump shall provide access to the interstitial space to allow for pressure testing to 5 psi and constant, real-time monitoring. The sump shall be manufactured by Western Fiberglass, Inc.

System Specifications

1.01 System Suitability

The Tank Sump Riser Tube and Riser Reducer Assembly shall:

- A. Attach to the UST manway, bung fitting or containment collar to prevent the intrusion of ground water into the sump assembly.
- B. Be constructed in a double wall configuration with interstitial access provided for constant, real-time monitoring.
- C. Be of sufficient size to allow all piping terminations, fittings, equipment, and flex-hoses to be contained within the Sump Assembly.
- D. Provide ample area to allow servicing and inspection of all piping terminations, fittings, equipment, and flex-hoses within the Sump Assembly.
- E. Contain any release of environmental contaminants from the tank fittings and equipment contained within the Sump Assembly.
- F. Provide an interface to the access "street" manway system with sealed water-tight or friction "lift-lid" Tank Sump Riser Tube Reducer Assembly.
- G. Be available as a U.L. Listed device if required.

1.02 Construction Specifications

- A. Meet or exceed United States National Bureau of Standards PS 15-69 for Custom Contact Molded Reinforced-Polyester Chemical-Resistant Process Equipment or U.L. Listing if applicable.
- B. Be constructed of materials that are not harmful to the environment.
- C. Be non-permeable to the hydrocarbons and not weakened by exposure to these materials.
- D. Be suitable for petroleum products and blends including methanol and ethyl alcohol mixtures.
- E. Have a thirty (30) year warranty against corrosion.

1.03 Release Monitoring System shall:

- A. Allow full visual and physical access/inspection of all piping reductions, fittings, hoses, and equipment.
- B. Provide a monitor point for electronic monitoring and evacuation of fluids from both within the sump body and for the interstitial space of the double wall.

1.04 Piping Penetrations

- A. Provide locations for the installations of fluid tight double wall pipe and conduit penetration seals to be installed according to manufacturer's instructions.

Contact Us For More Information!

Mascott Equipment Co
Portland Seattle Pasco
(800) 452-5019 (800) 481-7311 (888) 450-7867



TANK SUMPS

TANK SUMP PACKAGES - SINGLE WALL

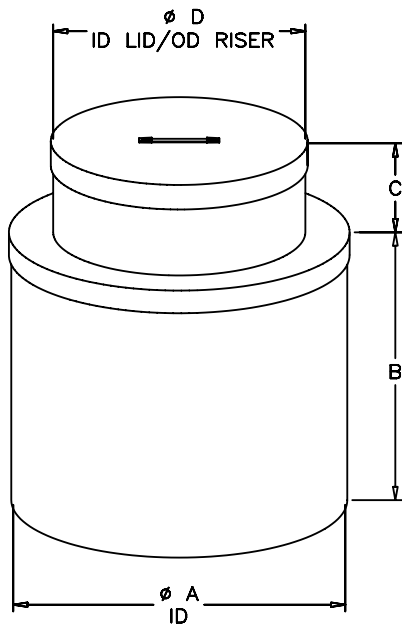
"C" - Centered Opening / "O" - Offset Opening

WATERPROOF TYPE "A"	WATER RESISTANT TYPE "B"	NO LID	FRIC TION FIT W/ BOT TOM-"TC"	FRIC TION FIT N/ BOT TOM- "TC"	A (in.)	B (in.)	C (in.)	D (in.)
	TAP361425B	TAP361425CNL	TAP36B1425C	TAP361425C	36	36	12	32
	TAP361425O-B	TAP361425ONL	TAP36B1425O	TAP361425O	36	36	12	32
TAP361410A	TAP361410B	TAP361410CNL	TAP36B1410C	TAP361410C	36	36	12	30
TAP361410O-A	TAP361410O-B	TAP361410ONL	TAP36B1410O	TAP361410O	36	36	12	30
TAP426210A	TAP426210B	TAP426210CNL	TAP42B6210C	TAP426210C	42	36	12	30
TAP426210O-A	TAP426210O-B	TAP426210ONL	TAP42B6210O	TAP426210O	42	36	12	30
TAP421685A	TAP421685B	TAP421685CNL	TAP42B1685C	TAP421685C	42	36	12	32
TAP421685O-A	TAP421685O-B	TAP421685ONL	TAP42B1685O	TAP421685O	42	36	12	32
TAP421695A	TAP421695B	TAP421695CNL	TAP42B1695C	TAP421695C	42	36	12	34
TAP421695O-A	TAP421695O-B	TAP421695ONL	TAP42B1695O	TAP421695O	42	36	12	34
TAP421697A	TAP421697B	TAP421697CNL	TAP42B1697C	TAP421697C	42	36	12	36
TAP421697O-A	TAP421697O-B	TAP421697ONL	TAP42B1697O	TAP421697O	42	36	12	36
TAP421687A	TAP421687B	TAP421687CNL	TAP42B1687C	TAP421687C	42	36	12	38
TAP421687O-A	TAP421687O-B	TAP421687ONL	TAP42B1687O	TAP421687O	42	36	12	38
TAP481775A	TAP481775B	TAP481775CNL	TAP48B1775C	TAP481775C	48	36	12	30
TAP481775O-A	TAP481775O-B	TAP481775ONL	TAP48B1775O	TAP481775O	48	36	12	30
TAP481793A	TAP481793B	TAP481793CNL	TAP48B1793C	TAP481793C	48	36	12	32
TAP481793O-A	TAP481793O-B	TAP481793ONL	TAP48B1793O	TAP481793O	48	36	12	32
TAP481780A	TAP481780B	TAP481780CNL	TAP48B1780C	TAP481780C	48	36	12	34
TAP481780O-A	TAP481780O-B	TAP481780ONL	TAP48B1780O	TAP481780O	48	36	12	34
TAP481785A	TAP481785B	TAP481785CNL	TAP48B1785C	TAP481785C	48	36	12	36
TAP481785O-A	TAP481785O-B	TAP481785ONL	TAP48B1785O	TAP481785O	48	36	12	36
TAP481788A	TAP481788B	TAP481788CNL	TAP48B1788C	TAP481788C	48	36	12	38
TAP481788O-A	TAP481788O-B	TAP481788ONL	TAP48B1788O	TAP481788O	48	36	12	38
TAP481792A	TAP481792B	TAP481792CNL	TAP48B1792C	TAP481792C	48	36	12	40
TAP481792O-A	TAP481792O-B	TAP481792ONL	TAP48B1792O	TAP481792O	48	36	12	40

Contact Us For More Information!

Mascott Equipment Co
 Portland Seattle Pasco
 (800) 452-5019 (800) 481-7311 (888) 450-7867

STANDARD CONFIGURATION:
FRICTION FIT LID



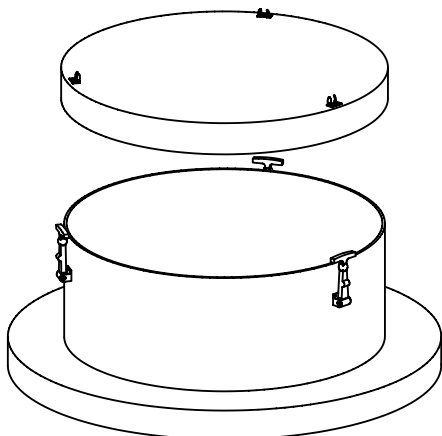
DIMENSION TABLE

A	
B	
C	
D	

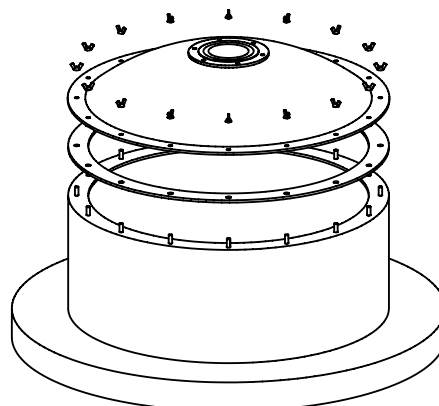
NOTES:

- ALL RISERS AVAILABLE CENTERED OR OFFSET
- OPTIONAL WALL CONSTRUCTION SINGLE OR DOUBLE

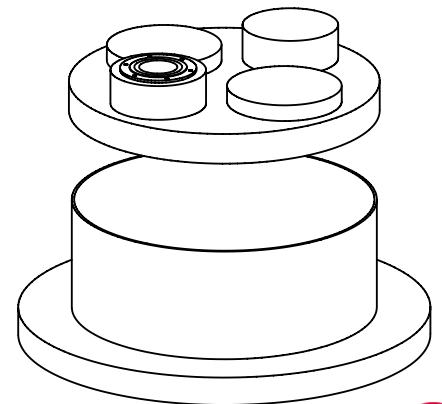
TYPE B
WATER RESISTANT



TYPE A
WATER TIGHT



MULTI-PORT
PHILTITE OPW CNI



DRAWN 08-18-05 DL

DESCRIPTION

TANK SUMP
(36" , 42" , 48" or CUSTOM DIA. AVAILABLE)

MODEL #

PART #

SCALE

SHEET

1 OF 1



TANK SUMPS

TANK SUMP PACKAGES - DOUBLE WALL

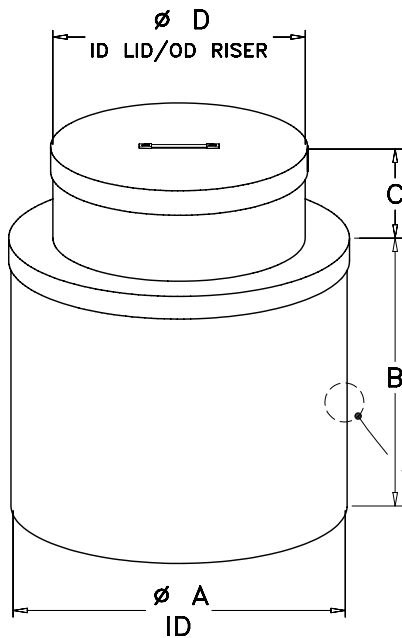
"C" - Centered Opening / "O" - Offset Opening

WATERPROOF TYPE "A"	WATER RESISTANT TYPE "B"	NO I/D	FRIC TION FIT W/ BO T T O M - "TC"	FRIC TION FIT N/ BO T T O M - "TC"	A (in.)	B (in.)	C (in.)	D (in.)
	DWTAP361425B	DWTAP361425CNL	DWTAP36B1425C	DWTAP361425C	36	36	12	32
	DWTAP361425O-B	DWTAP361425ONL	DWTAP36B1425O	DWTAP361425O	36	36	12	32
DWTAP361410A	DWTAP361410B	DWTAP361410CNL	DWTAP36B1410C	DWTAP361410C	36	36	12	30
DWTAP361410O-A	DWTAP361410O-B	DWTAP361410ONL	DWTAP36B1410O	DWTAP361410O	36	36	12	30
DWTAP426210A	DWTAP426210B	DWTAP426210CNL	DWTAP42B6210C	DWTAP426210C	42	36	12	30
DWTAP426210O-A	DWTAP426210O-B	DWTAP426210ONL	DWTAP42B6210O	DWTAP426210O	42	36	12	30
DWTAP421685A	DWTAP421685B	DWTAP421685CNL	DWTAP42B1685C	DWTAP421685C	42	36	12	32
DWTAP421685O-A	DWTAP421685O-B	DWTAP421685ONL	DWTAP42B1685O	DWTAP421685O	42	36	12	32
DWTAP421695A	DWTAP421695B	DWTAP421695CNL	DWTAP42B1695C	DWTAP421695C	42	36	12	34
DWTAP421695O-A	DWTAP421695O-B	DWTAP421695ONL	DWTAP42B1695O	DWTAP421695O	42	36	12	34
DWTAP421697A	DWTAP421697B	DWTAP421697CNL	DWTAP42B1697C	DWTAP421697C	42	36	12	36
DWTAP421697O-A	DWTAP421697O-B	DWTAP421697ONL	DWTAP42B1697O	DWTAP421697O	42	36	12	36
DWTAP421687A	DWTAP421687B	DWTAP421687CNL	DWTAP42B1687C	DWTAP421687C	42	36	12	38
DWTAP421687O-A	DWTAP421687O-B	DWTAP421687ONL	DWTAP42B1687O	DWTAP421687O	42	36	12	38
DWTAP481775A	DWTAP481775B	DWTAP481775CNL	DWTAP48B1775C	DWTAP481775C	48	36	12	30
DWTAP481775O-A	DWTAP481775O-B	DWTAP481775ONL	DWTAP48B1775O	DWTAP481775O	48	36	12	30
DWTAP481793A	DWTAP481793B	DWTAP481793CNL	DWTAP48B1793C	DWTAP481793C	48	36	12	32
DWTAP481793O-A	DWTAP481793O-B	DWTAP481793ONL	DWTAP48B1793O	DWTAP481793O	48	36	12	32
DWTAP481780A	DWTAP481780B	DWTAP481780CNL	DWTAP48B1780C	DWTAP481780C	48	36	12	34
DWTAP481780O-A	DWTAP481780O-B	DWTAP481780ONL	DWTAP48B1780O	DWTAP481780O	48	36	12	34
DWTAP481785A	DWTAP481785B	DWTAP481785CNL	DWTAP48B1785C	DWTAP481785C	48	36	12	36
DWTAP481785O-A	DWTAP481785O-B	DWTAP481785ONL	DWTAP48B1785O	DWTAP481785O	48	36	12	36
DWTAP481788A	DWTAP481788B	DWTAP481788CNL	DWTAP48B1788C	DWTAP481788C	48	36	12	38
DWTAP481788O-A	DWTAP481788O-B	DWTAP481788ONL	DWTAP48B1788O	DWTAP481788O	48	36	12	38
DWTAP481792A	DWTAP481792B	DWTAP481792CNL	DWTAP48B1792C	DWTAP481792C	48	36	12	40
DWTAP481792O-A	DWTAP481792O-B	DWTAP481792ONL	DWTAP48B1792O	DWTAP481792O	48	36	12	40

Contact Us For More Information!

Mascott Equipment Co
 Portland Seattle Pasco
 (800) 452-5019 (800) 481-7311 (888) 450-7867

STANDARD CONFIGURATION:
FRICTION FIT LID



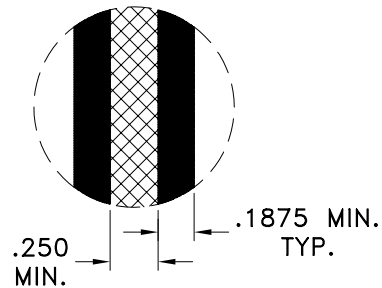
DIMENSION TABLE

A	
B	
C	
D	

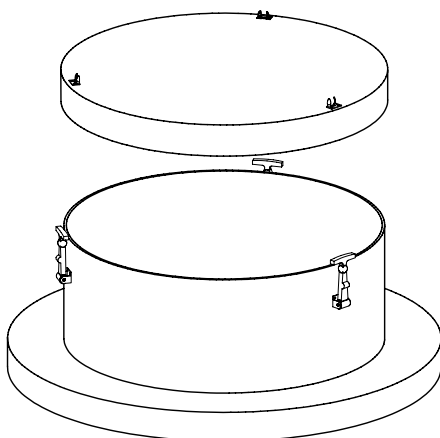
NOTES:

- ALL RISERS AVAILABLE CENTERED OR OFFSET

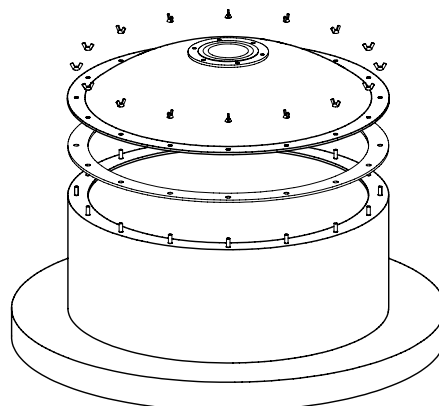
DOUBLE WALL DETAIL



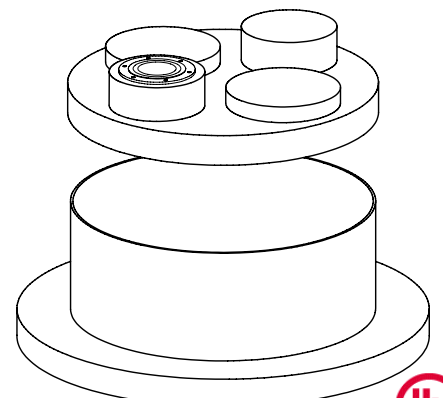
TYPE B
WATER RESISTANT



TYPE A
WATER TIGHT



MULTI-PORT
PHILTITE OPW CNI



DESCRIPTION

DOUBLE WALL TANK SUMP
(36" , 42" , 48" or CUSTOM DIA. AVAILABLE)

MODEL #

PART #

DRAWN

DL 01-12-06

SCALE

SHEET

1 OF 1



FIBERGLASS LIMITED PRODUCT WARRANTY

This limited warranty constitutes our only responsibility and obligation to repair and or replace materials or components. We make no other express or implied warranties or any warranty of merchantability or fitness for a particular use except for the limited conditional warranty stated below.

1. CONDITIONS OF WARRANTY

This warranty applies only to materials and components manufactured by Western Fiberglass, Inc., and is subject to notification by the original customer within (30) days of the first discovery of each cause, effect or occurrence which may cause any claim under this limited warranty, further:

- A. The components manufactured by Western Fiberglass, Inc. be used only for the purpose for which they were designed, intended, and installed, further:
- B. That the use of said systems and components be for the normal uses, service conditions and installation in accordance with the manufacturer's instructions approved by Western Fiberglass, Inc.

2. LIMITED WARRANTY

Subject to the conditions herein, Western Fiberglass, Inc. warrants, for the period and conditions below, that components manufactured by Western Fiberglass, Inc.:

- A. Will conform to manufacturer's specifications at time of sale and will be free from defects in materials and workmanship for one (1) year from date of original purchase, further:
- B. Will not fail due to external corrosion for a period of thirty (30) years from the date of original purchase while remaining undisturbed in the original installation configuration, further:
- C. Will not fail due to internal corrosion in any application designed and used for the containment of the materials specified upon original order for the same period, as described in paragraph B, in section 2 Above.

3. LIMITATION REMEDIES

Western Fiberglass, Inc. will at its option, repair or replace the defective materials and or components found to be defective by Western Fiberglass, Inc. in accordance with these conditions. These repairs or replacements will be furnished by Western Fiberglass, Inc. at no cost other than shipment fees hereunder. Any claims not covered by Western Fiberglass, Inc., will be the sole responsibility of the customer.

Western Fiberglass, Inc. will not be liable for any direct, incidental, special or consequential damages or other loss, including, but not limited to, damage to or loss of other property or equipment, loss of contents or service, environmental damages and or cleanup costs, loss of facilities or income, and personal injuries, whether to customers, its owners, officers, agents, employees, invitee, or otherwise, resulting from natural causes including, but not limited to, flood, fire earthquake or other act of God, negligence, willful misconduct or other cause not expressly described herein, regardless of when the same might occur.

Contact Us For More Information!

Mascott Equipment Co

Portland

Seattle

Pasco

(800) 452-5019

(800) 481-7311

(888) 450-7867