

DESCRIPTION

499-RP-TR feature a 24" pendant designed for low ceiling applications and offers optics by Portfolio.

Catalog #	Type
Project	
Comments	Date
Prepared by	

SPECIFICATION FEATURES

Material

Cold rolled steel or solid brass trim ring with a matte white acrylic bowl. Solid brass or aluminum cable finials. Solid aluminum mounting ring and hardware with cable.

Downlight: One piece precision die cast aluminum 1-1/2" deep collar accommodates varying dimensions of ceiling materials. Precisely formed one piece, clear Alzak®, non-imaging optical reflector ensures 55° cut-off to lamp and lamp image.

Finish

Standard: Matte White (MW)
Premium: Natural Aluminum (NA) [Sustainable Design], Lacquered Satin Aluminum (SAL), Satin Chrome (SC), Lacquered Satin Chrome (SCL), Polished Chrome (PC), Satin Nickel (SN), Lacquered Satin Nickel (SNL), Polished Nickel (PN), Oxidized Brass (OBR), Satin Brass (SB), Polished Brass (PB), Satin Copper (SCP), Polished Copper (PCP), Oxidized Copper (OCP), Gun Metal (GNM) or Custom Color (CC). Specify finish for the mounting ring and hardware.

Optics

Refer to www.shaperlighting.com for complete photometrics.

Ballast/Integral Emergency Battery Pack

One (1) integral, multi-voltage (120V/277V), electronic CFL (347V Canada) ballast for a 26W, 32W or 42W CFL lamps. Provides flicker free and noise free operation and starting.

Lamp/Socket

Two (2) 26W, 32W (GX24q-3) or 42W (GX24q-4) 4-pin triple CFL lamps. Universal 4-pin CFL socket injection molded plastic with fatigue free stainless steel lamp spring ensures positive lamp retention. Lamps furnished by others.

Installation

Decorative trim/finial/bowl assembly is securely suspended from the mounting ring by three stainless steel cables (provided). Listed for eight #12AWG (four in, four out) 90°C conductors feed through branch wiring. One 1/2" and two 3/4" pry outs. Positioned to allow straight conduit runs.

Installation (Con't.)

Access to junction box by removing reflector. Accepts 1/2" EMT, C Channel, T-bar fasteners, and bar hangers. Adjusts 5" vertically from above or below ceiling. Positive reflector mounting, without tools, pulls trim tight to ceiling. No measuring, cutting or adjustment of cables is required to achieve standard overall height and level mounting. Contractor to provide appropriate structural support for the fixture's weight.

Options

Hand-Painted Faux Alabaster Bowl (FB), Hand Painted Faux Linen Bowl (LNB), Refer to the downlight spec sheet for options, MH Lamping - Contact factory.

Labels

U.L. and C.U.L. listed. Downlight is standard damp label.

Modifications

Contact the factory regarding scale options, unique finishes, mounting, additional materials/ colors, or decorative detailing.



499-RP-TR SERIES

Recessed Pendant Luminaire



ORDERING INFORMATION

Sample Number: 499-RP-TR-CFL/2-277V-PCP

Series	Voltage	Trim/Hardware Finish	Ring/Hardware Finish	Options
499-RP-TR = 24" Pendant w/ Trim Ring	120V 277V 347V	<u>Standard</u> MW= Matte White <u>Premium</u> CC = Custom Color PB = Polished Brass PC = Polished Chrome PCP = Polished Copper SB = Satin Brass SC = Satin Chrome SCL = Lacquered Satin Chrome SCP = Satin Copper SN = Satin Nickel SNL = Lacquered Satin Nickel OCP = Oxidized Copper GNM = Gun Metal	<u>Standard</u> MW= Matte White <u>Premium</u> CC = Custom Color PB = Polished Brass PC = Polished Chrome PCP = Polished Copper SB = Satin Brass SC = Satin Chrome SCL = Lacquered Satin Chrome SCP = Satin Copper SN = Satin Nickel SNL = Lacquered Satin Nickel OCP = Oxidized Copper GNM = Gun Metal	FB = Hand Painted Faux Alabaster Bowl LNB = Hand Painted Faux Linen Bowl
Lamp CFL/2 (26/32/42W-Triple)				



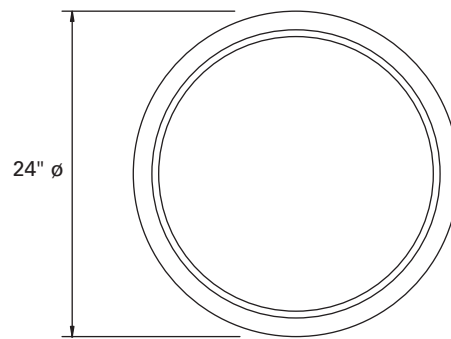
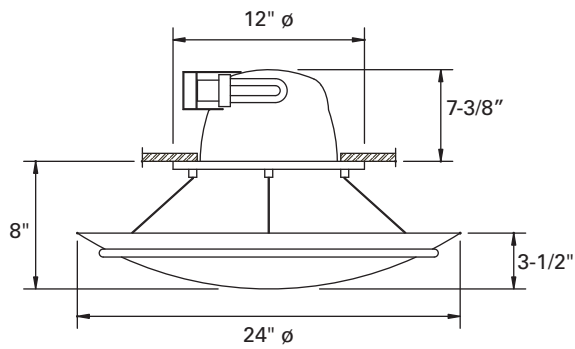
Shaper has a long-standing history of offering environmentally-friendly fixtures. The copper and bronze alloys used in our exterior luminaires feature up to 98% recycled content, contribute less undesirable air emissions compared to painted aluminum and are easy to recycle.



Shaper's Quick Ship program features over thirty-four fixtures with finish options such as Satin Chrome, Natural Aluminum and Satin Brass and a wide variety of lamp selections. All products ship in five days from receipt of order.

Refer to the Icon Legend
Link on shaperlighting.com.

DIMENSIONS



499-RP - TR Standard

COMPANION PRODUCTS



210



210-D



499



642-A/4



642-A



643