

Inspect Before You ConnectSM

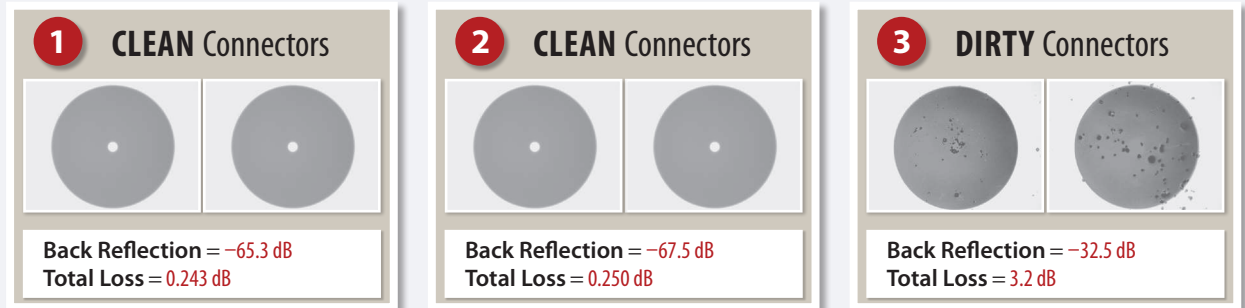
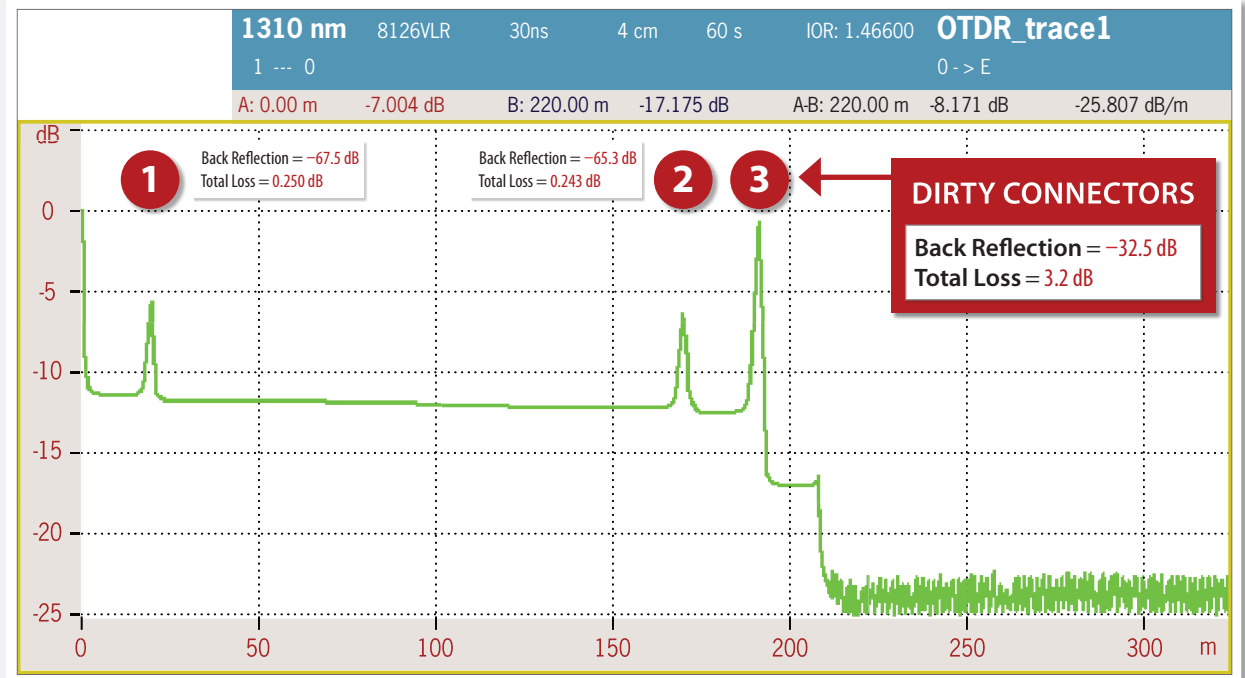
Contamination is the #1 reason for troubleshooting optical networks.

- 80% of field test failures can be attributed to dirty connectors.
- Microscopic debris can significantly affect signal performance and cause permanent damage.
- Particles can break apart, spread, and migrate when dirty connectors are mated.
- A typical dust particle is 2 to 15 μm and can only be viewed with a microscope.

JDSU offers the most comprehensive product portfolio to inspect every fiber connector and application in your network.



OTDR Trace of Fiber Contamination and Its Effect on Signal Performance



This OTDR trace illustrates how a dirty fiber connection can affect overall signal performance. **Inspect Before You Connect!** Proactively inspecting each fiber connection will significantly reduce network downtime and troubleshooting.