

# THE LIGHTHOUSE NEWS BEACON

CHILDREN'S LIGHTHOUSE LEARNING CENTER

EDUCATIONAL DAY CARE WITH A PURPOSE



## CHILDREN'S LIGHTHOUSE STAFF

**Lisa Gomez**  
Director

**Emily Jones**  
Assistant Director

**Annie Lankford**  
Kitchen Manager

**Julie Millsap**  
Receptionist/ Administrative  
Assistant



## CHILDRENS LIGHTHOUSE LEARNING CENTERS

Welcome to Children's Lighthouse

*The Jenkins, Montanez, Lugo, Walsh, Bukowski, Geddings, Nieves,  
Campos, Dilts and Sanchez Families!*

### SUMMER CAMP 2014

**Parents of School -Agers:  
What are your summer plans?**

**Children's Lighthouse has 2, 3 and 5 day programs for  
School Agers for Summer Camp.**

**We have two field trips a week: 8 "away" and 8 "in-house"  
as well as a craft activity and food activity every week.**

**Stop by the front desk anytime or come to our  
SUMMER CAMP ENROLLMENT BREAKFAST**

**Saturday, April 5 - 9:00am to Noon**

**Register/ sign up for Summer Camp Kit and get  
all the details.**

**Cavern Spelunking / Wildlife Safari / Ripley's Believe It Or  
Not / Museums / Magic Show**

## CHILDREN'S LIGHTHOUSE LEARNING CENTER

25473 Bulverde Road  
San Antonio, TX 78261  
210.494.9200

InfoBulverdeRoad@ChildrensLighthouse.com  
www.ChildrensLighthouse.com/BulverdeRoad

# THE LIGHTHOUSE NEWS BEACON

## IMPORTANT CHILDREN'S LIGHTHOUSE DATES

**APRIL—  
SUMMER CAMP  
REGISTRATION FOR  
SCHOOL AGED CHILDREN**

**REGISTER AND PAY  
SUMMER CAMP KIT FEE  
TO HOLD YOUR CHILD'S  
SPOT**

**MAY 1 —  
ANNUAL CURRICULUM  
FEE FOR 2014 – 2015  
SCHOOL YEAR IS DUE  
\$150.00**

### Soccer Shots

Soccer Shots is now available at Children's Lighthouse! New season starts: March 25, 2014. Shots is a high-energy, FUN and age appropriate soccer enrichment program.

Please see Ms. Julie the front desk for more information and/ or to sign up!

### KINDERDANCE

We are pleased to announce two additional enrichment programs available on Thursdays at our center:

**Kinderdance** – a dance and movement program &

**Kindergym** – a developmental floor gymnastics and fitness program

Please see Ms. Julie at the front desk for information.

### Days the Center will be closed in 2014

January 1 (Thursday) – New Year's Day

May 26 (Monday) – Memorial Day

July 4 (Friday) – Independence Day

September 1 (Monday) – Labor Day

November 27 (Thursday) – Thanksgiving Day

November 28 (Friday) – Thanksgiving Break

December 24 (Wednesday) – Christmas Eve

December 25 (Thursday) – Christmas Day

### The Center will close at noon

December 31 (Wednesday) – New Year's Eve

### OUTDOOR PLAY

We are taking advantage of the beautiful weather and we are going to the playground often.

1/ Parents please remember SUNSCREEN!. Label your sun screen and check it in with the front desk!

2/ Please have your children wear closed toe shoes.

### PARENTS PLEASE LABEL YOUR CHILDREN'S CLOTHING AND BELONGINGS

With the arrival of Spring, we have fluctuating temperatures. Sometimes the weather is warm; sometimes there is still a chill in the air. Help us keep track of jackets, sweaters and other belongings by labeling them.

*Experience the Lighthouse Difference*

# THE LIGHTHOUSE NEWS BEACON

## EVENT CALENDAR

April 1 – APRIL FOOL'S DAY  
SOCCER SHOTS

April 2 – AUTISM AWARENESS DAY

April 3 – KINDERDANCE & KINDERGYM

April 5 – NEW FAMILY OPEN  
HOUSE & SUMMER  
CAMP REGISTRATION  
9:00AM to Noon

April 7 – 11 – GARDEN WEEK

April 8 – SOCCER SHOTS

April 9 & 10 – PICTURE DAY

April 10 – KINDERDANCE & KINDERGYM

April 11 – CRAZY HAIR

April 15 – TAX DAY  
SOCCER SHOTS

April 17 – KINDERDANCE & KINDERGYM  
BACKYARD BONANZA AND  
EGG-STRAVAGANZA  
CLASS PARTIES (2:30)

April 18 – PET OWNER DAY – Bring  
a Picture of Your Pet

April 22 – EARTH DAY  
SOCCER SHOTS  
KINDERDANCE & KINDERGYM

April 24 – KINDERDANCE & KINDERGYM

April 25 – BATTLE OF THE FLOWERS DAY  
FIESTA SHOEBOX FLOAT  
PARADE

April 29 – SOCCER SHOTS

April 30 – PJ DAY (Wear your Pajamas)

**2014-2015 School Year Curriculum fee is**

**Due By May 1**

**Curriculum fee reduced to \$150 if paid by May 1<sup>st</sup>**



We have added a TUITION BOX in our front lobby. Please feel free to drop your weekly tuition in the box!

Tuition is due on MONDAY.

A late fee of \$25.00 is automatically applied to your account if tuition is not received by the end of the day on TUESDAY.

Welcome New Teachers!

Ms. Valerie and Ms. Holly – Room 1,

Ms. Diana – Room 3, Ms. Teri – Room 6 and

Welcome Back to Ms. Marissa – Room 5

**CONGRATULATIONS**

**HAYDEN – He is a BIG BROTHER!**

**&**

**LYNETTE – She is a BIG SISTER!**

**\*\*\* PLEASE RETURN LOANED OUT EMERGENCY CHANGES OF CLOTHING \*\*\***

On occasion Children's Lighthouse will loan out a change of clothing to children who do not have a change of clothes available.

We don't mind loaning out the clothes, but we request that the clothes are washed and returned the next day so that the clothes are available for another child if/ when needed.

*Experience the Lighthouse Difference*

# THE LIGHTHOUSE NEWS BEACON

## IMPORTANT PUBLIC SCHOOL DATES

**April 18 –**  
**COMAL SCHOOLS CLOSED**  
**NEISD SCHOOLS CLOSED**

**April 25 –**  
**NEISD SCHOOLS CLOSED**

## BIRTHDAY CALENDAR

**April 4 – Drew**  
**April 11 - Elizabeth**  
**April 26 - Hayden**

Like us on Facebook.

**Our goal is 250 Likes by the end of April!!**



and



- \* Please like us on Facebook - **Children's Lighthouse-Bulverde Road**
- \* **Share our Facebook Posts**
- \* We always appreciate recommendations on our Facebook page
- \* Follow us on Twitter, our handle is - **@CLBulverdeRoad**



**Want to earn FREE Tuition?**

### Parent Referral Program

Earn **FREE** Tuition by referring your friends, co-workers or family member to us! If you provide us with their name, email address and phone number, we will make contact with them to share information about Children's Lighthouse.

As the referring family you will be credited a **FREE** week of tuition for your oldest child after the new family has been with Children's Lighthouse for four (4) continuous weeks.

Please see Ms. Julie at the Front Desk or Ms. Lisa for information about our **Parent Referral Program**.

**RBFCU has recognized Children's Lighthouse as a qualifying organization for membership. So, if you are not currently a member of Randolph Brooks Federal Credit Union and you would like to be, mention Children's Lighthouse – Bulverde Road!**

### TUITION EXPRESS a Tuition Payment Option

We have activated our electronic payment system! We now offer weekly Automatic Withdrawals from either Checking or Savings (ACH) or recurring weekly charges on either Visa or MasterCard Credit Cards.

Please see Ms. Julie at Front Desk or Ms. Lisa for information

*Experience the Lighthouse Difference*

# THE LIGHTHOUSE NEWS BEACON



Ms Holly, Ms. Valerie and Ms. Gabby

## ROOM 1

MS. HOLLY, *LEAD TEACHER*

MS. VALERIE, *ASSISTANT TEACHER*

MS. GABBY, *ASSISTANT TEACHER*

Our song of the month is Five Little Ducks and the rhyme is "Rub-a-dub-dub."

This month's shape is: **Oval**

This month's baby sign is: **Water**

This month's color is: **Purple**

We are happy to show parents the baby signs learned in class, please ask so that you can recognize them and incorporate the baby signs in your activities at home.



## Five Little Ducks

Five little ducks went out one day  
Over the hill and far away  
Mother duck said "Quack, quack,  
quack, quack."  
But only four little ducks came back

Repeat

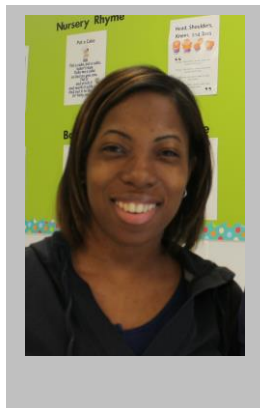
## Rub-a-Dub-Dub

Rub-a-dub-dub,  
Three men in a tub,  
And who do you think they were?  
The butcher, the baker  
The candlestick maker,



*Experience the Lighthouse Difference*

# THE LIGHTHOUSE NEWS BEACON



Ms. Janna and  
Ms. Michelle



## Five Little Ducks

Five little ducks went out one day  
Over the hill and far away  
Mother duck said "Quack, quack,  
quack, quack."  
But only four little ducks came back

Repeat

## Rub-a-Dub-Dub

Rub-a-dub-dub,  
Three men in a tub,  
And who do you think they were?  
The butcher, the baker  
The candlestick maker,  
They all sailed out to sea,  
'Twas enough to make a man stare

## ROOM 2

MS. JANNA, *LEAD TEACHER*

MS. MICHELLE, *ASSISTANT TEACHER*

Hello Everyone!

Room 2 teachers, Ms. Janna and Ms. Michelle, would like to welcome new faces to the classroom.

Our song of the month is Five Little Ducks and the rhyme is "Rub-a-dub-dub."

This month's shape is: **Oval**

This month's baby sign is: **Water**

This month's color is: **Purple**

Ms. Janna and Ms. Michelle will be happy to show parents the baby signs learned in class, please ask so that you can recognize them and incorporate the baby signs in your activities at home.



# THE LIGHTHOUSE NEWS BEACON



Ms. Jena and Ms. Valentina

## ANNOUNCEMENTS

*Keep your eye on the calendar as there are many activities coming up this month.*

*Please have children wear closed toe shoes!*

*Our class has grown exponentially! Welcome to all our new friends. We are so glad you are here!*

## ROOM 3

MS. JENA, *LEAD TEACHER*

Happy Spring from room 3! This past month we learned a lot about our senses and body. We are walking and exploring our world.

April showers bring May flowers and a whole bunch of new opportunities for growing and learning. Our theme this month is BUBBLES, MUD & PUDDLES. Our shape to explore is OVAL. We will have a lot of hands on learning with water and sensory play. Please send extra clothes from home!

As the weather gets warmer, we are enjoying our learning time outside. Please send hats and sunscreen, but remember to check it in sunscreen with the front office.

We can't wait for this new season of fun and learning we will have together.



*Experience the Lighthouse Difference*

# THE LIGHTHOUSE NEWS BEACON



Ms. Kristen and Ms. Jacque

## ROOM 4

MS. KRISTEN, *LEAD TEACHER*

MS. JACQUE, *ASSISTANT TEACHER*

Your children have come so far! They truly have learned so much.

This month our theme is construction. We cannot wait to see what the children build... and destroy. We will be making art with popsicle sticks, sand paper, chalk and dirt. Please be sure to bring extra clothes or dress the children in clothes that you do not mind getting dirty. Please label the clothing!

Throughout the month you will hear us singing our new "Dump Truck Song" and signing the word for WATER. Our shape this month is OVAL and our color is **purple**.

We are so pleased with all the progress of your children in class. We welcome Isabella Lugo to the class!

### Reminders / Requests / suggestions

- Please encourage your child to use their words.
- Also, we encourage you to keep your child's fingernails cut short!

Thank you,  
Ms. Kristen and Ms. Jacque



# THE LIGHTHOUSE NEWS BEACON



Ms. Eva  
and Ms. Marissa

## ROOM 5

MS. EVA, *LEAD TEACHER*

MS. MARISSA, *ASSISTANT TEACHER*

WOW, our class has grown so much! We would like to welcome all our new friends and Ms. Teri, who is with our class until April when Ms. Marissa returns.

In April, our theme is amphibians and reptiles. Don't be surprised if you see us hopping down the hallway, or hear us making silly snake sounds.

Our character value for this month is FAIRNESS. We will be encouraging your child to share and take turns.

Please ask your child to identify colors, shapes and letters – they have been working very hard and have a lot to show you!

We are looking forward to another fun-filled month.

*Welcome back Ms. Marissa.*

*We are looking forward to another fun-filled month!*

*Thanks,*

*Ms. Eva*



# THE LIGHTHOUSE NEWS BEACON



Ms Marci and Ms. Teri

## ANNOUNCEMENTS

We have picture day, class party and a "Backyard Bonanza Egg-stravaganza" planned this month, so keep an eye on the calendar!

Welcome to our new classroom friends!!

## ROOM 6

MS. MARCI, *LEAD TEACHER*

MS. TERI, *ASSISTANT TEACHER*

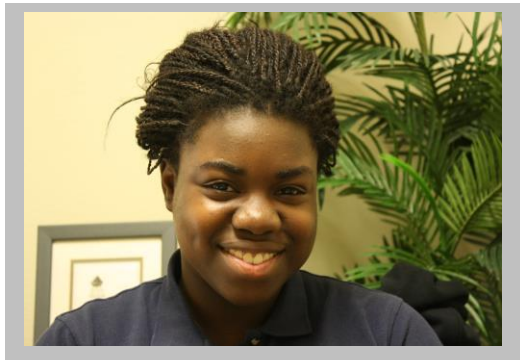
April is a great month for discussing plants and animals. Our theme for April is reptiles and amphibians. If you have plastic, frogs, snakes, alligators or crocodiles, please have your children bring them to class to show their friends!

We will continue working on shapes and numbers 1 to 10. Our letters to focus on this month are P, Q, R and S.

We will decorate our room and get ready for the holidays this month: Easter and Fiesta.



# THE LIGHTHOUSE NEWS BEACON



Ms. Kiesha

**Welcome to our new friend  
Abbey!**



## **ROOM 8** MS. KIESHA, *LEAD TEACHER*

Spring is finally here! We are so proud of our preschool friends and all they are learning! We appreciate the extra time our parents have been spending at home reviewing lessons learned with the children. This team approach is showing with academic improvement!

The children will learn about FAIRNESS. The theme for April is reptiles and amphibians. We will leap into some brand new Spring activities to celebrate this month's holidays: Easter and Fiesta!

We will also focus on vowels and completing our scissor skills practice.

There are a lot of exciting activities this month, so remember to check the calendar!



# THE LIGHTHOUSE NEWS BEACON



**ROOM 10**  
MS. ABIGAIL, *LEAD TEACHER*

## GET READY FOR SUMMER CAMP 2014

Ms. Abigail.

Parents,

Please stop by the front office to sign your kiddos up for Summer Camp!

We have so many fun activities planned. There are 2 field trips scheduled each week! 8 "away" from the center and 8 "in-house".

The Summer Camp Kit Fee includes: T-shirt, drawstring backpack, all field trips – both "away" and "in-house", craft activity and food activity!

Can't wait to see you there!



*Experience the Lighthouse Difference*

# THE LIGHTHOUSE NEWS BEACON

## DIRECTOR'S CORNER

*Hello Parents!*

*Join me in welcoming Ms. Emily. Emily joins Children's Lighthouse as Assistant Director and brings over 10 years of childcare experience to our center.*

*We are very excited that Spring is here. It is going to be a very busy month. The teachers have so much planned for the children. Some of the activities are: Picture Day, Class Party and the Backyard Bonanza Egg-stravaganza. Keep your eye on the calendar.*

*Welcome to all our new families. We continue to grow and are enjoying all the new faces! You may have noticed that we have a few new teachers. As we grow and open more rooms (Room 7 will open soon), you may see some new faces in the classrooms.*

*We are gearing up for Summer and hope that all our School Ageders join us. We have a Summer Camp Enrollment Breakfast planned on Saturday, April 5 to help new and existing families with registration. Tell your friends!*

*Our enrichment activities are starting new seasons. If you have not yet signed up your child, see the front desk. It is not too late. Soccer Shots is on Tuesday and Kinderdance will be here on Thursday.*

*Warm regards,  
Lisa Gomez*



Ms. Lisa

Ms. Emily



Ms. Julie



Ms. Annie



*Experience the Lighthouse Difference*