

**Photographic Archival Recording  
of Homestead RV3, Ulan, NSW.  
Volume 1: Report.**

**February 2013**



● Photography ● Heritage ● Archaeology

PO Box 1206, CAMDEN, NSW 2570

*Tel. (02) 4657 2480*

*[www.stedinger.com.au](http://www.stedinger.com.au)*

*M.ICOMOS, M.AACAI*

**For**  
***Ulan Coal Mines Limited***  
Private Mail Bag 3006, MUDGEE, NSW 2850

© *Stedinger Associates*

**Disclaimer:** This document is intended solely for the use of the Client identified on this cover sheet and the regulatory agencies that are directly involved in this specified project. The report is only intended for the purpose for which this information has been prepared. Stedinger Associates undertakes no duty to and accepts no responsibility to any other party who may rely upon this document. Any representation, statement, opinion or advice, expressed or implied in this document is made in good faith but on the basis that Stedinger Associates is not liable (whether by reason of negligence, lack of care or otherwise) to any person for any damage or loss whatsoever which has occurred or may occur in relation to that person taking or not taking (as the case may be) action in respect of any representation, statement or advice referred to above

## **CONTENTS**

<b>1. INTRODUCTION.....</b>	<b>3</b>
1.1. The Project and Aims. ....	3
1.2. Research and Limitations.....	3
1.3. Author Identification.....	4
1.4. Repository.....	4
<b>2. METHODOLOGY.....</b>	<b>5</b>
<b>3. LIST OF DOCUMENTARY SOURCES.....</b>	<b>7</b>
<b>4. LOCATION PLANS.....</b>	<b>8</b>
<b>5. SITE INVENTORY.....</b>	<b>11</b>
<b>6. PHOTOGRAPH LIST.....</b>	<b>14</b>
<b>7. IMAGE PLAN.....</b>	<b>17</b>
<b>8. CATALOGUE OF PHOTOGRAPHS.....</b>	<b>19</b>
8.1. Homestead Exterior. ....	19
8.2. Homestead Interior. ....	21
8.3. Shearing Shed and Yards.....	22
8.4. The Site and Garden. ....	24

## **Photographic Archival Recording of Homestead RV3, Ulan, NSW.**

### ***1. INTRODUCTION.***

#### ***1.1. The Project and Aims.***

The district of Ulan is located approximately 40 kilometres northeast of Mudgee in the Western Coalfields of New South Wales. The homestead, known as RV3, is situated off the Broken Back Road southwest of the Bobadeen Loop Road and west of Old Ulan Road. It lies 3 kilometres southwest of Bobadeen Homestead. RV3 has been selected for photographic recording in accordance with recommendations in the overarching Heritage Management Plan (ULN-SD-PLN-0013) for the Ulan Coal Continued Operations Project (UCCOP) as approved by the NSW Department of Planning.<sup>1</sup> This management plan recommends that a “photographic record to be undertaken if the site is to be destroyed during mining”.<sup>2</sup> This is the case. The site of Homestead RV3 is to become the location of a Fan Site. The recording forms part of Ulan Coal Mines Ltd commitment to documenting European heritage within and in the vicinity of their operations area.

The homestead was once part of farming life in the wider rural Ulan area during the twentieth century. Ulan village was proclaimed a village on the 21<sup>st</sup> of August 1897. The photographic recording was commissioned by Ulan Coal Mines Ltd on the 29<sup>th</sup> January 2013. The following record is intended to contribute to our knowledge, understanding and appreciation of homesteads and station life in the Ulan area, as well as to provide a stable and long term record for present and future generations.

#### ***1.2. Research and Limitations.***

This recording by Stedinger Associates includes only a brief historical context of the homestead. Its purpose is to place the farm residence and its site in their historical context.

---

<sup>1</sup> Xstrata Coal. 2011. *Ulan Complex. Continued Operations – European and Natural Heritage Assessment*. For NSW Department of Planning.

<sup>2</sup> Xstrata Coal. 2011. *Ulan Complex. Continued Operations – European and Natural Heritage Assessment*. For NSW Department of Planning. p.82.

---

### ***1.3. Author Identification.***

Photographs included in this archival recording were taken by Mr Gerald Steding (MA) of Stedinger Associates. The report component was written by Dr. Louise Steding (PhD). The authors would like to thank Mr Ian Flood (Ulan Coal Mines Ltd) and Mr Kieren Norris (Gillham & Sons PtyLtd) for their assistance in this project.

### ***1.4. Repository.***

One copy of this photographic archival recording and prints should be provided to the NSW Department of Planning. A copy should also be provided to the Mid-Western Regional Council for placement in their local library. A third copy should be retained by Ulan Coal Mines Limited in their archives.

## **2. METHODOLOGY.**

Photographs were taken by Mr Gerald Steding on the 30<sup>th</sup> and 31<sup>st</sup> of January 2013. This photographic archival record has been prepared in accordance with the procedures and approaches outlined in *Photographic Recording of Heritage Items Using Film or Digital Capture* and considers the earlier guidelines *How to Prepare Archival Records of Heritage Items*.<sup>3</sup> It includes:

1. Inventory sheets;
2. Statutory heritage listing status;
3. A brief historical context of the cottage recorded;
4. A description of the cottage, its fabric, form, site and location;
5. Statement of heritage significance;
6. Location Plan;
7. Bibliography of research sources used;
8. Photograph plan showing positions from where photographs were taken;
9. Photograph lists with image numbers and sequence numbers;
10. Colour catalogues with thumbnail prints and sequence numbers; and
11. Labelled colour photographs on archival paper.

### ***Photographic Equipment.***

Photographs were taken using a digital Canon camera EOS 5D Mark II (SLR camera full frame, 21 megapixel) with a Canon 24mm-105mm standard zoom lens (EF IS USM L), a Canon 17mm-40mm wide angle zoom lens (EF USM L) and a Canon 100mm macro prime lens (EF IS USM L). External flashes include the Canon EX600 RT and the Canon EX430. Post-production includes the use of Adobe Photoshop CS5 and Adobe Photoshop Lightroom 3.

### ***Files and Format.***

Images were photographed as CR2 (Canon) files, a commonly used RAW file type. These files were then saved as TIF files - a universal format. The images have also been saved as JPEG images for printing purposes. The file numbering system relates to the

---

<sup>3</sup> NSW Heritage Office and Department of Urban Affairs and Planning. 1998. *How to Prepare Archival Records of Heritage Items*. NSW Heritage Office, Parramatta.  
NSW Department of Planning, Heritage Office. 2006. *Photographic Recording of Heritage Items Using Film or Digital Capture. Heritage Information Series*. Parramatta: NSW Department of Planning.

photographic catalogue sheets (refer below). Photograph plans are also included showing the location of each particular photograph.

DVDs are included with each copy of this work. The DVD disc submitted contains four folders:

1. Report in PDF format;
2. Images as RAW files; and
3. Images in TIF format.

***Presentation.***

This photographic archival recording is presented in an archival binder and slipcase containing individual archival slip-sheets made from polypropylene. These archival packaging materials are stable and have been selected to optimise survival of the photographic record.

Colour prints have been printed using Fujicolour Chrystal archival photographic paper for long-term permanency. The photographic catalogue shows the images with reference numbers also relating to the photographic plan. The larger prints have been cut and mounted within archival sleeves. These prints measure 6 inches by 4 inches (14.8cm by 10.5cm). Accompanying labels present a brief description of each view and the direction of each photograph.

### **3. LIST OF DOCUMENTARY SOURCES.**

Detail of Parish Map: *Parish of Bobadeen County of Bligh Cassilis Land District*. 29<sup>th</sup> October 1881. Department of Lands. PMap DB03. Image 14958201.

#### ***Publications and Reports.***

Connelly, C.J. 1993. *Mudgee A History of the Town*. C.J. Connelly.

Gulgong Writing Group. 1984. *Travelling Down the Cudgegong. Pioneering the Mudgee-Gulgong District*. Macquarie Publications Pty Ltd.

NSW Heritage Office and Department of Urban Affairs and Planning. 1998. *How to Prepare Archival Records of Heritage Items*. NSW Heritage Office, Parramatta.

NSW Department of Planning, Heritage Office. 2006. *Photographic Recording of Heritage Items Using Film or Digital Capture. Heritage Information Series*. Parramatta: NSW Department of Planning.

Pauling, Bob. 2003. *Apple Tree Flat, a gateway to Mudgee*. Mudgee Historical Society.

Stedinger Associates. 2009. *A Photographic Archival Recording of Rural Heritage in the Moolarben Coal Operations Area, NSW*. Moolarben Coal Operations Pty Ltd.

Stedinger Associates. 2010. *A Photographic Archival Recording of Two Cottages in the Ulan Village, NSW*. Moolarben Coal Operations Pty Ltd.

Stedinger Associates. 2011. *A Photographic Archival Recordings of Old Ulan and Bobadeen Homestead, NSW*. Ulan Coal Mines Ltd.

Stedinger Associates. 2011. *Bobadeen Homestead. A Conservation Management Plan*. Ulan Coal Mines Ltd.

Swords, Doug and Bassingthwaighte. 1998. *They Made Their Own Way. A Collection of Reminiscences of Some Senior Mudgee District Residents*. Crawford House Publishing, Bathurst.

Xstrata Coal. 2011. *Ulan Complex. Continued Operations – European and Natural Heritage Assessment*. For NSW Department of Planning.

#### 4. LOCATION PLANS.



Plan showing the location of Ulan in the mid western region of New South Wales. From: *Australia Road and 4WD Atlas*. HEMA maps. Seventh edition.





**Satellite image showing the location of Homestead RV3, Bobadeen Homestead and Ulan.  
From: Google and Sensis Pty Ltd, 2011 Digital Globe.**



	<p><b>Ulan Coal Mines Limited</b> RV3 general locaion</p>	<p>Date: 17/10/2012 Produced By: UCML Environmental Depart Map Size: A3 Portrait Coordinate System: MGA94 Zone 55</p>	<p><small>DISCLAIMER</small> Xstrata Coal NSW makes every effort to ensure the quality of the information available on this map. Before relying on the information on this map, users should carefully evaluate its accuracy, currency, completeness and relevance for their purposes, and should obtain any appropriate professional advice relevant to their particular circumstances.</p>
<p>Xstrata Coal (NSW) Pty Limited ABN 18 097 523 058 Private Mail Bag 8, SINGLETON NSW 2330 www.xstrata.com</p>		<p><small>DATA SOURCE</small> Land and Property Management Authority (2010) Industry and Investment NSW (2010) Xstrata Coal NSW (2010)</p>	<p><small>Xstrata Coal NSW cannot guarantee and assumes no responsibility for the accuracy, currency or completeness of the information and by using this map you accept that Xstrata Coal NSW has no liability for any loss or damage in any form whatsoever caused directly or indirectly from the use of this map.</small> Copyright: Xstrata Coal NSW (2010).</p>

## 5. SITE INVENTORY.

<b>Homestead RV3, Ulan. Farmhouse and Site</b>			
<b>Name of Item</b>	Homestead RV3.		
<b>Item Category</b>	Built		
<b>Owner</b>	Ulan Coal Mines Ltd	<b>Use</b>	Abandoned farm residence.
<b>LISTINGS</b>			
<b>Statutory List</b>	<b>Listing Status</b>		
Local Environmental Plan State Heritage Register National Heritage List	<p><u>Local Environmental Plan</u> The homestead is not listed as a heritage item in the <i>Mid Western Regional Interim Local Environmental Plan 2008</i>.</p> <p>The homestead is not listed as a Heritage Item in Schedule 1 of the <i>Merriwa Local Environmental Plan 1992</i>.</p> <p><u>State Heritage Register</u> The homestead is not listed on the State Heritage Register.</p> <p><u>National Heritage List</u> Not listed (as at 29/01/2013)</p>		
<b>LOCATION</b>			
<b>Address</b>			
<b>Street Address</b>	Homestead RV3 lies 10 kilometres north of Ulan and 47 kilometres north of Mudgee. The homestead, known as RV3, is situated off the Broken Back Road southwest of the Bobadeen Loop Road and west of Old Ulan Road. It lies 3 kilometres southwest of Bobadeen Homestead.		
<b>Closest Town</b>	Ulan	<b>Parish</b>	Bobadeen
<b>Local Govt Area</b>	Mid-Western Regional Council	<b>County</b>	Bligh
<b>Postcode</b>	2850	<b>State</b>	NSW
<b>Property</b>			
<b>GPS Readings (MGA) ± 3m.</b>	Homestead (southeast end). Shearing Shed (southeast end).	55H 0756 422E/ 643 6184N 55H 0756 331E/ 643 6171N	
<b>DESCRIPTION</b>			
<b>Original Owner</b>	Henry Crossing (Land owner by 1881)		
<b>Construction Date</b>	c.1940 with c.1960s additions		
<b>Est. End of Use</b>	1990s		
<b>Physical Description</b>	<p>At RV3, the homestead complex includes a derelict weatherboard cottage with later asbestos cement sheeting and Masonite additions, the remains of a shearing shed with timber post and rail stockyards and a loading ramp, a remnant utility shed, a tennis court and extensive gardens.</p> <p>The cottage itself is a weatherboard structure with a corrugated hipped steel roof rising to gables beneath the ridgeline. A small gable extension gives the cottage an L-shape plan. It has timber floors and a timber frame erected on piers. A closed-in verandah was once located on the northeast side. Two brick chimneys are located on the southwest side. In this form, originally the cottage faced southeast. With later additions and infill, it faced northeast.</p>		

	<p>A low drystone garden wall defines the southwest side of the house and garden precinct. Similar local rock has been used as a border along the northeast driveway approach. A turning circle is located on the northeast side of the homestead while the driveway continues around the house to the northwest where it leads to the utility shed, dam, shearing shed and paddocks.</p> <p>A rainwater tank on a stand is situated at the southwest side of the house and another between additions behind the original cottage. Here and to the southeast extensive gardens extend from the house and continue down a hillside overlooking a large dam. Ornamental plantings in the house garden include agapanthus, a May bush, plumbago, succulents and other varieties. Fruit trees include a peach tree and citrus tree.</p> <p>To the west a shearing shed also dates to the twentieth century. It was once a prominent rectangular timber framed iron clad structure in the landscape. It had a hipped roof with gable ends. Today, much of its timber work and cladding has collapsed. A post and rail stockyard is located on the northeast side of the former shearing shed. It includes pens, two races, a loading ramp and a yard. Most rails between the posts are now missing.</p>
<p><b>Condition</b></p>	<p>Poor. The cottage, its additions, associated structures, tennis courts and former gardens are in a severely dilapidated condition. Across the site most of the original fabric is rusted, rotten or broken. At the homestead, both the interior and exterior cladding is often missing from the walls, leaving open elevations and shattered asbestos and Masonite on the ground. Structural timber is also highly deteriorated. Similarly floorboards are rotten and roof sheets and gutters are missing. Much of the original cladding has severely deteriorated.</p> <p>The shearing shed and stockyards are also in a severely deteriorated condition. With the exception of the northwest elevation of the shearing shed, all elevations are open. All cladding and roofing materials have collapsed. In the yards, the rails have fallen. At the tennis court, the bush post wire enclosure is collapsing. Similarly, little remains of the utility shed, consisting of leaning posts and scattered timbers. An old seeder has been left beside this shed.</p>
<p><b>Modifications</b></p>	<p>The homestead was initially a simple L-shaped weatherboard cottage that appears to date from c.1940. It was later extended, probably in the 1950s and 60s. The extensions consist of asbestos cement sheeting and Masonite.</p>
<p><b>Archaeological Potential</b></p>	<p>Potential subsurface remains at the site are unlikely to give new insights into ways of life and living circumstances in twentieth century mid-west New South Wales. Such sites have been well documented and photographed.</p>

<b>HISTORY</b> <b>Homestead RV3, Ulan.</b>	
<b>Historical Notes</b>	<p>Ulan was proclaimed a village on the 21<sup>st</sup> of August 1897. The small village was sited on the west bank of the Goulburn River and along Sportsman’s Hollow Creek. Ten kilometres to the north, by 1881 some 2530 acres of land had been purchased by Henry Crossing, including the site of RV3. Crossing later purchased Bobadeen Station, into which RV3 was incorporated.</p> <p>Henry Crossing was a ‘commission agent’ in the stock and station agency of ‘Crossing and Cox’ in Mudgee. At 26 years of age, in 1872 he married Martha Smith. From c.1874 to c.1885, they lived in a house called Pine Villa in Lewis Street Mudgee. It was then that Henry Crossing built a substantial homestead, called Menah, on the river flats to the northwest of the town.</p> <p>The present homestead RV3, appears to have been built in the 1940s as a simple L-shaped weatherboard cottage. The owners were sheep farmers and possibly cattle graziers. At this time people in the district travelled far for sport and recreation, travelling to Cassilis, Moolarben, Ulan, Mudgee and sometimes to neighbouring farms. This is likely to have been the case for homesteads at RV3, Bobadeen, the Lagoons and at Moolarben Station where tennis courts were built.</p> <p>The farm cottage was extended, probably in the 1950s and 1960s. The extensions consist of timber framing, asbestos cement sheeting and masonite. From 1939 throughout the years of World War II, building materials became one of the many items to be rationed. This continued through to about 1949. Fibro was used as a cheap material through these times of shortage. Many houses were built from fibro between 1940 and 1960.</p> <p>Throughout the 1990s much of the farming land in the Ulan district was sold to Ulan Coal Mines Ltd. RV3 is also now the property of Ulan Coal Mines Limited and has remained vacant for many years.</p>
<b>SIGNIFICANCE</b> <b>Cottage RV3, Ulan.</b>	
<b>Statement of Significance</b>	<p>The homestead RV3 has been found to have no heritage significance and has been recorded as such in the approved heritage management plan (Xstrata Pty Ltd 2011:21). The derelict farm residence and gardens date to the twentieth century, though the land was granted by 1881 and has connections to the extensive Bobadeen Station. Similarly, RV3 was formerly part of a sheep and cattle station. The site features a derelict homestead, shearing shed, stockyards and ramps, a remnant shed, water tanks, fence posts, a formal approach driveway and internal access tracks, a tennis court and a once substantial and elaborate garden. These items survive, though not intact. Initially the house was a modest cottage built in the c.1940s. It has since been obscured by various additions and extensions and has fallen into extreme disrepair.</p>

## 6. PHOTOGRAPH LIST.

<b>Site Name:</b> <i>Homestead RV3, Ulan.</i>		<b>Date:</b> <b>30<sup>th</sup> and 31<sup>st</sup> January 2013</b>	
<b>Photographer: G. and L. Steding</b>		<b>Location of Records</b> Ulan Coal Mines Limited Mid Western Regional Council Office of Environment and Heritage	
<b>Camera:</b> Canon EOS 5D Mark II (21.0 megapixel)	<b>Lens:</b> 1. Canon 24mm-105mm standard zoom lens (EF IS USM L) 2. Canon 17mm-40mm wide angle zoom lens (EF USM L) 3. Canon 100mm macro prime lens (EF IS USM L).		
<b>Film Type:</b> Colour	<b>Make:</b> Digital	<b>File Types :</b> RAW, TIF, JPEG	
<b>IMAGES:</b>			
<b>Image No.</b>	<b>File No.</b>	<b>Site</b>	<b>Facing</b>
		<i>Exterior, Cottage RV3, Ulan.</i>	<b>Recorded:</b> 30 <sup>th</sup> + 31 <sup>st</sup> January 2013
01	6826	Homestead and addition with wagon in the foreground.	southwest
02	6812	View across to the raised water tank, stone wall and fibro addition.	northeast
03	6847	The more recent fibro and masonite addition to the northwest.	northwest
04	6868	Shade trees beside the verandah of the fibro/masonite addition.	west
05	6820	North elevation with earlier weatherboard cottage to the left.	southwest
06	6841	North elevation of a fibro addition.	southwest
07	6875	West elevation of the fibro/masonite addition.	southeast
08	7004	East elevation of the original weather-board cottage.	northwest
09	7016	View across the turning circle to the east garden.	northeast
10	7017	Area between the fibro cottage and the fibro/masonite addition.	southwest
11	7022	North elevation of the fibro cottage addition.	southwest
12	7028	View along the frontage of the fibro/masonite addition.	southwest
13	7029	Wider view along the frontage of the fibro/masonite addition.	southwest
14	7083	View along southwest side of the homestead with tanks and well.	southeast
15	7040	Southwest elevation of the fibro / masonite addition.	northeast
16	7110	Former frontage of the weatherboard cottage.	northwest
17	7032	Rear of the weatherboard cottage and side extension.	southeast
18	7036	Chimney on southwest side of the weatherboard cottage.	northeast
19	7037	Chimney on southwest side of the weatherboard cottage.	east

		<i>Interior, Cottage RV3, Ulan.</i>	<b>Recorded:</b> 30 <sup>th</sup> + 31 <sup>st</sup> January 2013
20	7010	Interior of the fibro addition.	southwest
21	7012	Former room that was once a part of the weatherboard cottage.	northwest
22	7018	Interior of the fibro addition.	southwest
23	7041	Interior of the fibro/Masonite addition (southwest rooms).	northeast
24	7042	Interior of the fibro/Masonite addition (southwest rooms).	northeast
25	7044	Interior of the fibro/Masonite addition (southwest rooms).	northeast
26	7046	Interior of the fibro/Masonite addition (main area).	east
27	7047	Interior of the fibro/Masonite addition (main area).	south
28	7050	Interior of the fibro/Masonite addition (main area).	southeast
		<i>Shearing Shed and Yards, RV3, Ulan.</i>	<b>Recorded:</b> 30 <sup>th</sup> + 31 <sup>st</sup> January 2013
29	6784	Remains of a shearing shed south of the homestead.	southwest
30	6797	The only standing iron clad elevation.	east
31	6789	Remaining framework and piers.	south
32	6790	View to paddock and hill.	northeast
33	6792	Race leading between the yards and shed.	west
34	6802	Front and side view of the shearing shed.	northwest
35	6803	Wider view of the shearing shed.	northwest
36	6805	View to the dam and paddock.	southwest
37	6806	Front elevation of the shearing shed.	west
38	6807	View back to the homestead.	east
39	7063	Driveway continues to the shearing shed from the house.	southwest
40	7064	View of shearing shed in the landscape.	southwest
41	7065	View to shearing shed across yards.	east
42	7066	View to the yards and loading ramp.	west
43	7067	Loading ramp.	west
		<i>The Site and Garden, RV3, Ulan.</i>	<b>Recorded:</b> 30 <sup>th</sup> + 31 <sup>st</sup> January 2013
44	6819	Homestead garden to the southeast.	southeast
45	6821	Turning area in front of the homestead.	northeast
46	6852	Turning area in front of the homestead.	east
47	6863	Homestead garden from the driveway.	west
48	6874	View down driveway.	east
49	7007	Homestead garden to the southeast.	northeast
50	7013	View from the homestead to the driveway.	northeast
51	7008	Garden to the east with small pond.	east
52	7020	The driveway is lined with rocks (centre).	northeast
53	7021	The tennis court and entrance driveway.	north

54	7024	Boundary posts from the tennis court (right), northeast of the homestead.	northwest
55	7031	View out from the fibro / Masonite addition.	southwest
56	7035	A well is located in the garden behind the original weatherboard cottage.	southeast
57	7054	The remains of a timber work shed.	northwest
58	7055	Timber cladding and flooring from the shed lie on the ground.	west
59	7057	General view back to the homestead from the remnant shed with seeder.	south
60	7058	Remains of a seeder left beside a former shed.	north
61	7060	View to the homestead from the driveway between a work shed and the house.	southeast
62	7062	View over the landscape south of the homestead.	southeast
63	7069	Looking though the garden south-east of the homestead.	east
64	7092	View from the main entrance driveway to the homestead.	southwest
65	7128	General view over a large dam looking back to the homestead.	west



**7. IMAGE PLAN.**



**Figure 7.1.** Image showing the positions from where photographs were taken of the Homestead RV3. Google Image, 2007.



**Figure 7.2.** Image showing the positions from where photographs were taken of the Homestead RV3. Google Image, 2007.

## 8. CATALOGUE OF PHOTOGRAPHS.

### 8.1. Homestead Exterior.



**Image 1:** Homestead and addition with wagon in the foreground. Facing south-west. File-6826.



**Image 2:** View across to the raised water tank, stone wall and fibro addition. Facing northeast. File-6812.



**Image 3:** The more recent fibro and masonite addition to the northwest. Facing northwest. File-6847.



**Image 4:** Shade trees beside the verandah of the fibro/masonite addition. Facing west. File-6868.



**Image 5:** North elevation with earlier weatherboard cottage to the left. Facing southwest. File-6820.



**Image 6:** North elevation of a fibro addition. Facing southwest. File-6841.



**Image 7:** West elevation of the fibro/masonite addition. Facing southeast. File-6875.



**Image 8:** East elevation of the original weatherboard cottage. Facing northwest. File-7004.



**Image 9:** View across the turning circle to the east garden. Facing southeast. File-7016.



**Image 10:** Area between the fibro cottage and the fibro/masonite addition. Facing southwest. File-7017.



**Image 11:** North elevation of the fibro cottage addition. Facing southwest. File-7022.



**Image 12:** View along the frontage of the fibro/masonite addition. Facing southwest. File-7028.



**Image 13:** Wider view along the frontage of the fibro/masonite addition. Facing southwest. File-7029.



**Image 14:** View along southwest side of the homestead with tanks and well. Facing southeast. File-7083.



**Image 15:** Southwest elevation of the fibro / masonite addition. Facing northeast. File-7040.



**Image 16:** Former frontage of the weatherboard cottage. Facing northwest. File-7110.



**Image 17:** Rear of the weatherboard cottage and side extension. Facing southeast. File-7032.



**Image 18:** Chimney on southwest side of the weatherboard cottage. Facing northeast. File-7036.



**Image 19:** Chimney on southwest side of the weatherboard cottage. Facing east. File-7037.

## 8.2. *Homestead Interior.*



**Image 20:** Interior of the fibro addition. Facing southwest. File-7010.



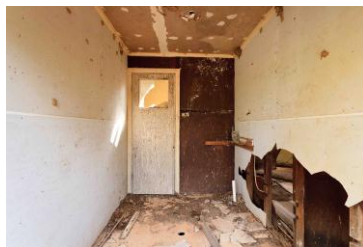
**Image 21:** Former room that was once a part of the weatherboard cottage. Facing northwest. File-7012.



**Image 22:** Interior of the fibro addition. Facing southwest. File-7018.



**Image 23:** Interior of the fibro/Masonite addition (southwest rooms). Facing northeast. File-7041.



**Image 24:** Interior of the fibro/Masonite addition (southwest rooms). Facing northeast. File-7042.



**Image 25:** Interior of the fibro/Masonite addition (southwest rooms). Facing northeast. File-7044.



**Image 26:** Interior of the fibro/Masonite addition (main area). Facing east. File-7046.



**Image 27:** Interior of the fibro/Masonite addition (main area). Facing south. File-7047.



**Image 28:** Interior of the fibro/Masonite addition (main area). Facing southeast. File-7050.

### 8.3. *Shearing Shed and Yards.*



**Image 29:** Remains of a shearing shed south of the homestead. Facing southwest. File-6784.



**Image 30:** The only standing iron clad elevation. Facing east. File-6797.



**Image 31:** Remaining framework and piers. Facing south. File-6789.



**Image 32:** View to paddock and hill. Facing northeast. File-6790.



**Image 33:** Race leading between the yards and shed. Facing west. File-6792.



**Image 34:** Front and side view of the shearing shed. Facing northwest. File-6802.



**Image 35:** Wider view of the shearing shed. Facing northwest. File-6803.



**Image 36:** View to the dam and paddock. Facing northwest. File-6805.



**Image 37:** Front elevation of the shearing shed. Facing west. File-6806.



**Image 38:** View back to the homestead. Facing east. File-6807.



**Image 39:** Driveway continues to the shearing shed from the house. Facing southwest. File-7063.



**Image 40:** View of shearing shed in the landscape. Facing southwest. File-7064.



**Image 41:** View to shearing shed across yards. Facing east. File-7065.



**Image 42:** View to the yards and loading ramp. Facing west. File-7066.



**Image 43:** Loading ramp. Facing west. File-7067.

### 8.4. *The Site and Garden.*



**Image 44:** Homestead garden to the southeast. Facing southeast. File-6819.



**Image 45:** Turning area in front of the homestead. Facing northeast. File-6821.



**Image 46:** Turning area in front of the homestead. Facing east. File-6852.



**Image 47:** Homestead garden from the driveway. Facing southwest. File-6863.



**Image 48:** View down driveway. Facing east. File-6874.



**Image 49:** Homestead garden to the southeast. Facing northeast. File-7007.



**Image 50:** View from the homestead to the driveway. Facing northeast. File-7013.



**Image 51:** Garden to the east with small pond. Facing east. File-7008.



**Image 52:** The driveway is lined with rocks (centre). Facing northeast. File-7020.



**Image 53:** The tennis court and entrance driveway. Facing north. File-7021.



**Image 54:** Boundary posts from the tennis court (right), northeast of the homestead. Facing northwest. File-7024.



**Image 55:** View out from the fibro / Masonite addition. Facing southwest. File-7031.





**Image 56:** A well is located in the garden behind the original weatherboard cottage. Facing southeast. File-7035.



**Image 57:** The remains of a timber work shed. Facing northwest. File-7054.



**Image 58:** Timber cladding and flooring from the shed lie on the ground. Facing west. File-7055.



**Image 59:** General view back to the homestead from the remnant shed with seeder. Facing south. File-7057.



**Image 60:** Remains of a seeder left beside a former shed. Facing north. File-7058.



**Image 61:** View to the homestead from the driveway between a work shed and the house. Facing southeast. File-7060.



**Image 62:** View over the landscape south of the homestead. Facing south. File-7062.



**Image 63:** Looking through the garden south-east of the homestead. Facing east. File-7069.



**Image 64:** View from the main entrance driveway to the homestead. Facing southwest. File-7092.



**Image 65:** General view over a large dam looking back to the homestead. Facing west. File-7128.