



REMOTE MIX COOLING SYSTEM PERLICK INSTALLERS STORE SURVEY

Dear PERLICK INSTALLER; JDP, Inc and the Perlick Corp need some site specific information from you in order to make a proposal to provide a turn-key installed qchill python system designed to safely dairy products from the walk-in cooler to a remote soft serve freezer. An isometric view of a generic system is attached. Please complete this form and return to us below.

Today's date: _____ Desired installation date: _____

Store name/number _____ / _____

Street address: _____

City _____ State/Province _____ Zip/Postal Code _____

Contact name _____ Franchisee name: _____

Contact phone _____ Contact email _____

I) Soft Serve Freezer info:

A) Make _____ Model _____ Serial Number _____ No flavors: _____

B) Make _____ Model _____ Serial Number _____ No flavors: _____

C) Make _____ Model _____ Serial Number _____ No flavors: _____

D) Make _____ Model _____ Serial Number _____ No flavors: _____





- II) **Power-Pak.** A Power-pak must be installed on a wall as close as is possible to the walk-in penetration through which the dairy mix lines run.
- A) Verify that the operator will provide 120V dedicated power service within 3ft of the Power-pak desired installation location.
 - B) Please measure the distance from Perlick Power-pak to walk-in cooler penetration and inside walk-in up to trunk line wall penetration. This is the glycol line sets. Enter the dimension here. _____ Plus 2 ft
 - C) Measure trace the “python” line-set run below indicating measurements for each rise and run segment. Begin at the top of the soft serve mix pump inside the cooler, indicate location of walk-in penetration for line-set, and then final segment running from walk-in penetration to the top of each soft-serve machine. See attached examples.

Draw dimensioned top view here.





<http://www.qchill.com>

Please check the top of the soft-serve machine(s) to ensure adequate clearance for connection of the qchill python insert. IF they have a top mountd cup dispenser, they may need to modify it, or buy a different type (from others) to enable adequate clearance for our connection of the qchill python. Note that the system is designed and intended to enable easy, safe and sanitary disconnection of the python linset bundle from the freezer, so some change or modification to existing top mounted cup dispensers is likely. Visit our website for more information.

Notes:

Questions?

call (800)676-8488 and mention "qchill".

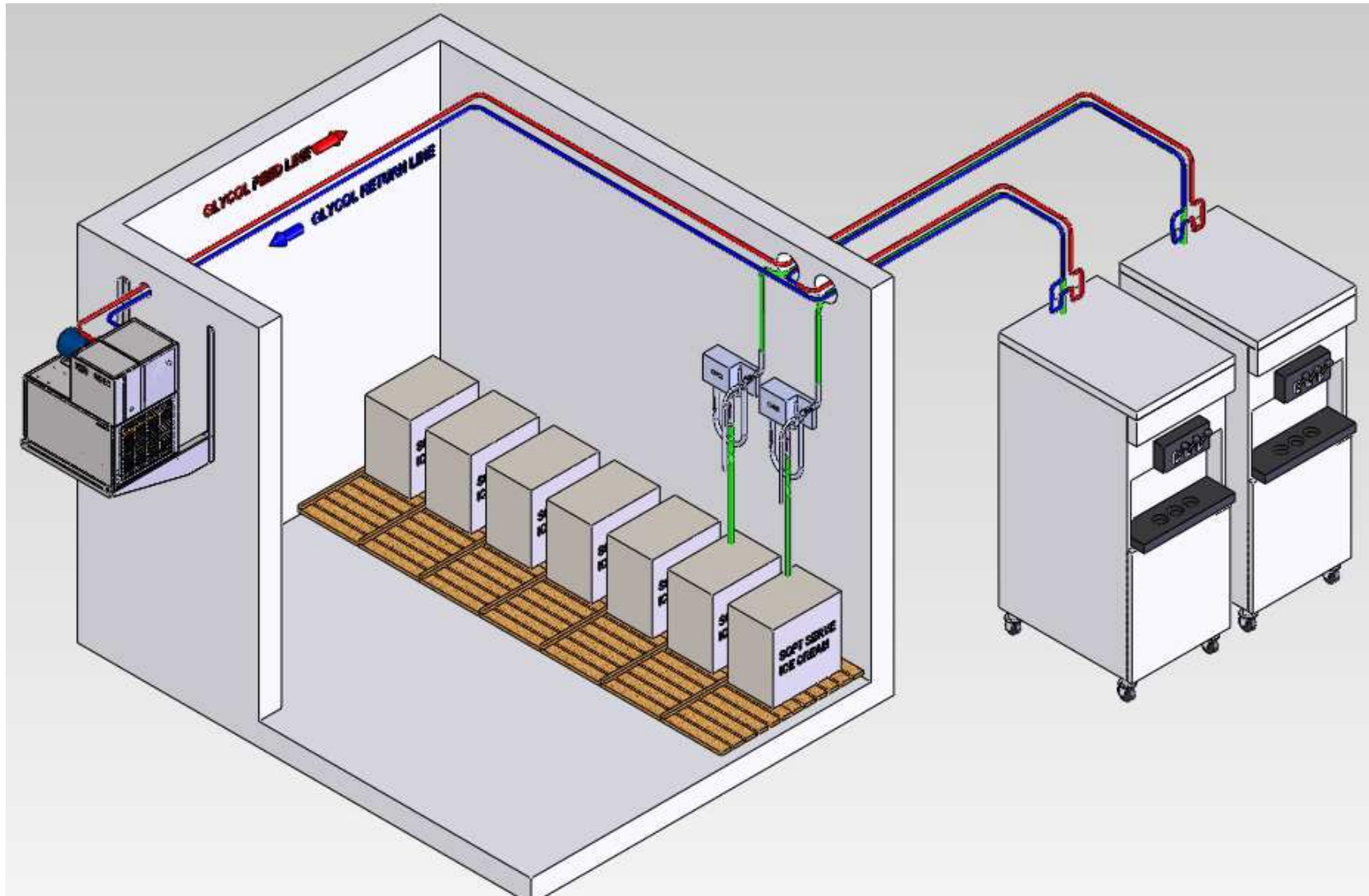
Please send the completed form via any of these methods:

1. Fax 651-676-8488
2. Email qchill@jdpinc.com





qchill™ Python SAMPLE INSTALLATION

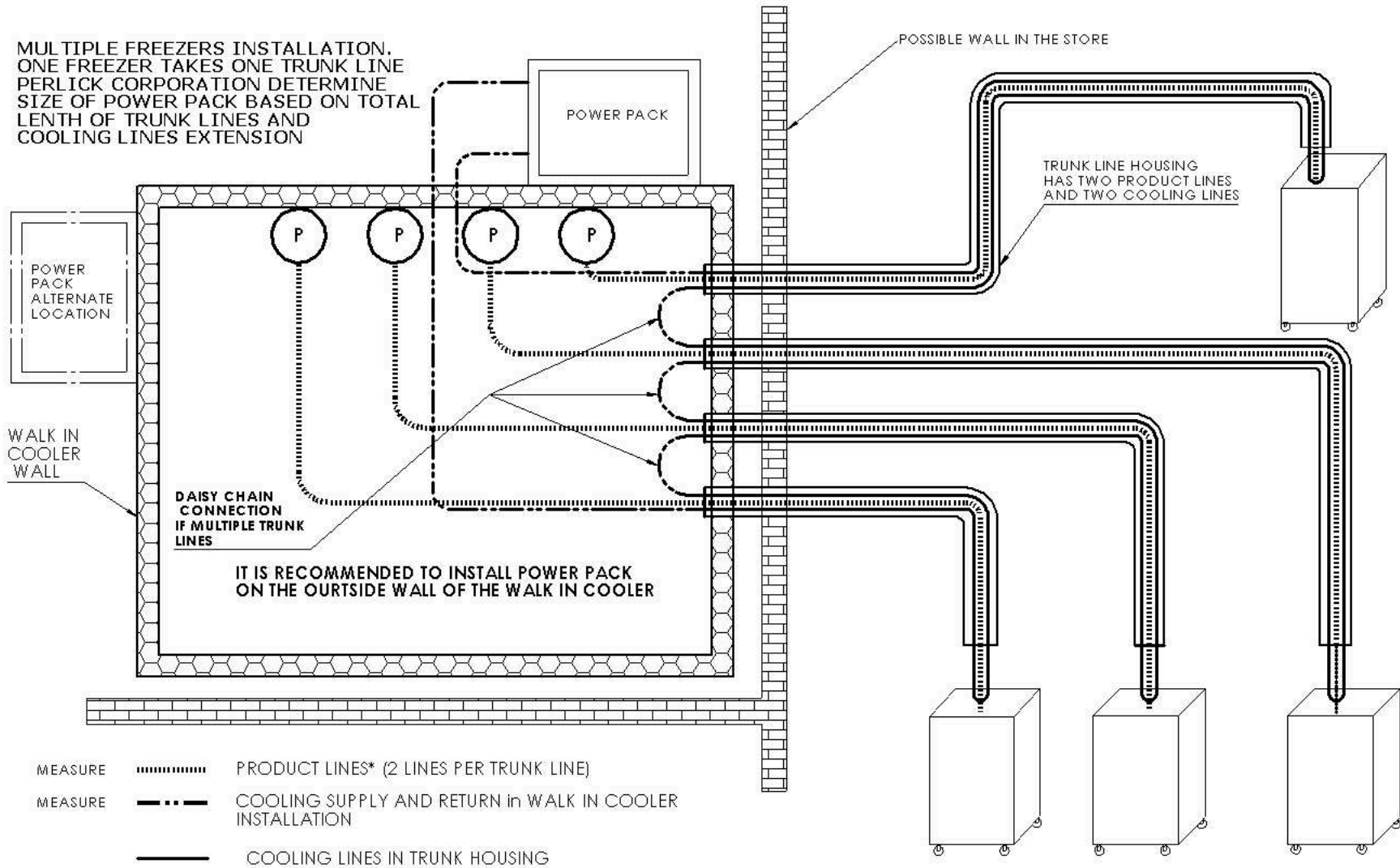


Questions? qchill.com 800-676-8488 x101 or 102. Fax: 651-676-8488 email: qchill@jdpinc.com

qcPSURVEY Rev-2/2012



MULTIPLE FREEZERS INSTALLATION.
ONE FREEZER TAKES ONE TRUNK LINE
PERLICK CORPORATION DETERMINE
SIZE OF POWER PACK BASED ON TOTAL
LENTH OF TRUNK LINES AND
COOLING LINES EXTENSION



* DUKE MACHINES TRUNK LINE CONNECTS PRODUCT LINES DIRECTLY TO THE PUMPS.
STOELTING MACHINES TRUNK LINE CONNECTS PRODUCT LINE TO 2 FT EXTENSION 1/2 " ID TUBE FROM THE PUMP WITH 1/2 X 5/8 COUPLER