



5460 North 64th Street, Milwaukee, WI 53218
Phone 414.463.7950 • Fax 414.463.4858
www.ssnc-milw.org

Creative: Kat & Mouse Graphic Design

Editor: Susan G. Stein

Project Manager: Andrea Weiner

Photography: Special thanks go to friend and volunteer Mary Kossik for taking hundreds of photos at the Center and around Westlawn for our publications.

COMMUNITY LEARNING CENTERS OPERATED BY SILVER SPRING NEIGHBORHOOD CENTER

John Burroughs Middle School
6700 N. 80th Street

Northwest Secondary School
5496 N. 72nd Street

Thurston Woods Campus
5966 N. 35th Street

School of Career & Technical Education
5075 N. Sherman Boulevard

Browning School
5440 N. 64th Street



Building Together





A Community of Success



Building Together

When Silver Spring Neighborhood Center was built in 1958, it was located in the then-new Westlawn housing development. Now, 54 years later, the eastern part of Westlawn has been rebuilt as a neighborhood of stunning homes, as shown on the front and back covers.

Silver Spring remains a key part of this housing development, newly renamed Westlawn Gardens – from prenatal care to activities for seniors, we provide dozens of activities that nurture, educate, and increase self-sufficiency for residents of Westlawn and for a

total of more than 7,321 people in our northwest neighborhood each year.

Whether it is bricks and mortar or building a young person's future, Silver Spring Neighborhood Center and Westlawn Gardens work together, creating a better day and a better future for children and families.

We invite you to read about what happened last year and to schedule a tour of our facilities to see for yourself.



A New Neighborhood at Our Center

Dear Friend of Silver Spring
Neighborhood Center:

If you've driven by recently, the cover of this annual report comes as no surprise. If you haven't visited our campus lately, then you may be amazed by the transformation at Westlawn.

Architectural changes are more visible than the kinds of human changes that we help produce every day at Silver Spring. We take lives as young as six weeks of age and mold them. We provide a continuum of care from 6 a.m. to 6 p.m. for children at our Early Childhood Education Center and until 9 p.m. for teens up to age 19. We provide wraparound services for youth to seniors in the areas of education, job training, recreation, emergency services, and social development.

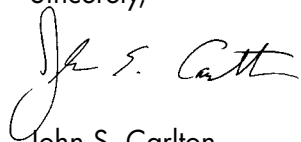
Since 1958, more than 125,000 participants have benefited from one or more of our activity areas. We have been regularly ranked at the highest level by the United Way of Greater Milwaukee for the program areas it funds: early childhood, youth social development,

and emergency services. In addition, we have received extra grants this year from United Way in the areas of teen pregnancy, parent/teen discussions about sexuality, and early literacy.

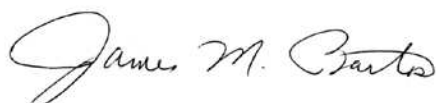
When donors review our program results, they often comment on our strong commitment to achieving the goals set out by each activity. These goals create something long lasting – like the new buildings – in the lives of our participants. They change lives and motivate our staff and our families to achieve even more in the future.

Your support as donors, volunteers, and partners makes Silver Spring successful. We couldn't do it without each and every one of you.

Sincerely,



John S. Carlton,
President, Board of Directors



James M. Bartos, Executive Director



Our Board & Staff Supervisors

President

John Carlton
BMO Retirement Services

Vice President, Board Governance

James McMullen
PNC Bank

Vice President, Programs

Melissa Shneyder
US Bank

Treasurer

Brendan Moran
BMO Harris Bank N.A.

Secretary

Sharon McDade
Browning School

Fraser Engerman
Johnson Controls, Inc.

Viktor Gottlieb
Associated Bank

Shawn Hansbrough
We Energies

Gracie Leonard
Westlawn Resident Council

Steve Mannebach
Northwestern Mutual

Mark Miller
Fashion Angels Enterprises

Richard Neureuther
Retired

Linda Rueth
GENCO Pharmaceutical Services

Earl Sadowsky
Northwestern Mutual Financial Network

Doris Schoneman
UWM College of Nursing

LyAnn Schultz
ManpowerGroup

Sean Scullen
Quarles & Brady LLP

Roger Siegel
The Boerke Company, Inc.

Delta Triplett
The Ten Group, LLC

Sandra Tunis
Managed Health Services

Founder & Honorary Chair

Reverend Canon Reinhart B. Gutman (dec.)

Honorary Board Members

Joan Boehm	Phoebe Lewis
Kathryn Coates-Buono	Victor Nohl
Marianne Epstein (dec.)	Elaine Schreiber
Diana Goldstein	Steven Smith
William Heller, Jr.	Father Allen Sommer
Nancy Laskin	Rymund Wurlitzer (dec.)

Executive Director

James M. Bartos



Front row, L-R: Lynn Kasza, director of finance/CFO; Antoinette Johnson, School of Career & Technical Education CLC coordinator; Shyrída Cunningham, transitional jobs business developer; Susan G. Stein, chief development and marketing director; Sandy Diekvoss, Early Childhood Education Center director; and Kathy Johnson, adult education coordinator

Back row, L-R: James Wilbern, Northwest Secondary School CLC coordinator; James M. Bartos, executive director; Anthony McHenry, assistant executive director; and Jeff Knox, Thurston Woods Academy CLC coordinator

Not pictured: Jean Bell-Calvin, UWM Silver Spring Community Nursing Center director; Eric Woulfe, IT manager & adult education instructor; and Domonique Barley, Browning School CLC coordinator

Your Help Makes All the Difference

Charitable gifts to support programs at Silver Spring Neighborhood Center come from a variety of sources: individuals, corporations, and foundations; United Way of Greater

Milwaukee; government contracts; and in-kind donations of volunteer time and materials, such as those donated for our traditional Back-to-School event each August. We also

receive thousands of Christmas gifts for our December Wrap Party, food and clothing for our emergency clothing bank; and gifts of books and computers.

What your gift supports:

\$15,000 - Teaching staff for three
Community Learning Centers

\$10,000 - Teen Leadership Club trip to
historically black colleges

\$ 5,000 - Summer field trips for entire day
camp

\$ 2,500 - Early Childhood Education Center
scholarship funds for low income
families

\$1,000 - Back to School supplies and family
dinner

\$ 500 - One athlete's entry fees, uniforms,
and tournament travel costs

\$ 250 - Adult Education testing for four
adults

\$ 100 - One day of fresh produce in
emergency food pantry

WISH LIST

Weight Room Equipment

- Treadmill
- Stationary bicycles
- Elliptical machine
- Yoga mats
- Industrial-sized fans
- Punching bag

Adult Education

- GED calculators
- Ergonomically correct chairs for computer lab (25)

- Alarm clocks
- Large bulletin board
- Fax machine

Youth Development

- Sofas, tables
- Basketball shooting arcade game
- Pizza ovens
- Hot dog warmers
- New or gently used football cleats (ages 14 – 17)

- Pool table

Early Childhood Education Center

- Carpeting for 6 classrooms
- Computers for 6 classrooms
- Educational games, audio tapes, videos
- Sand and water tables
- Outdoor toys
- Gym mats
- Climbers for classrooms

- 30 booster seats
- Large pillows with zip covers; bean bag chairs
- Tummy time mats
- Glider rocking chairs
- Cots for naptime
- Computer games for children of all ages
- Blocks and infant/toddler toys
- Playsets: workbench/ tools, kitchen set/ accessories

- Computers
- Balls
- Bubbles
- Musical instruments
- Culturally diverse dolls
- Culturally diverse books for children
- Globes, maps
- Easels
- Legos and Duplos
- Balls
- Sidewalk chalk
- Digital cameras

Early Childhood Education Center

Our program served 143 children and 104 families last year, ranging from six weeks of age to 12. Although we had fewer children, the children stayed with us for a longer period of time, resulting in all-time record outcomes:

Their Improvement Was Measureable:

- Communication Skills—97% improved
- Social/Emotional Skills—100% improved
- Cognitive Skills—100% improved
- Motor Skills—100% improved
- Literacy Skills—100% improved

We continued to use the Creative Curriculum, a nationally renowned program that evaluates children with regular assessments, starting at the age of four months. Developmental standards are tested every few months with the Ages & Stages assessment tool and shared with parents.



With an emphasis on early literacy and social skills, our preschool children are ready to succeed in kindergarten and in life.

Community Learning Centers



Silver Spring operates four Community Learning Centers. In partnership with each school and its administration, the CLC is designed to serve the unique needs of the schools where they are located and the surrounding neighborhood. Daily afterschool academic and social support is provided, as is support for families, through family learning events held twice each semester. Depending on funding, CLCs continue through summer vacation.

Browning Elementary School, Thurston Woods Campus' elementary and middle schools, the School of Career and Technical Education, grades 8 - 12; and Northwest Secondary School, grades 9 - 12 are managed by Center staff. In 2011-12, we also operated a CLC at Burroughs Middle School before the school was closed in June.

Our after school activities not only teach skills, patience, manners, and respect for others, they create opportunities for children to form lasting friendships.



Teen Programming

By involving youth over a period of many years, our staff develops long-term relationships with participants. These relationships are at the core of our successful teen outcomes.

Each of the five seniors in our Teen Leadership Club in 2011-2012 graduated from high school and is headed to post-secondary education.

Pregnancy prevention, always an extremely successful program at Silver Spring, included two additional programs in 2011-2012: PREP (Personal Responsibility Education Program) and Parents Matter!, a United Way-funded effort to enhance dialogue between parents and youths about sexuality.

Once again, there were no teen pregnancies among the members of our teen social development programs and there were no felonies, making our total for the past 9 years only three pregnancies and one felony among 2,000 participants. This translates into a SSNC rate of .1%, nearly one-tenth of the citywide rate of 3.5%.



Above: Each year, 10 teens participate in our annual Historically Black College Tour. This provides an opportunity for high school juniors to start actively thinking about campuses outside Wisconsin and ones where students are nearly all African American. Campuses toured were Spellman University, Morehouse University, Clark Atlanta University, Alabama State University, Alabama A&M University, and Tuskegee University.

Spartans Sports Leagues



Silver Spring Neighborhood Center is one of a handful of social service agencies in the United States that operates league level basketball and track programs for boys and girls. Our teams complete year-round in local, regional, and national tournaments. This means that our teens have an exceptional opportunity to be scouted by college recruiters.

Our youth understand that in order to be on a Spartans team, they must also maintain strong academic standards. The winning combination at Silver Spring is talent, academic standards, and sportsmanship, leading to college scholarships.

The 2011-2012 season, once again, exemplified the superior talents of our Spartans:

- As each year, every graduating senior on our basketball team received a 4-year athletic scholarship.
- On the track team, 7 players earned full-time college scholarships and 6 earned partial college scholarships, out of a total of 16 seniors.
- The 8th grade basketball team won the Spartan Classic in Lansing, MI and placed in the top four in three other tournaments.
- 26 former SSNC Spartans now play college basketball.
- Dwight Buyucks completed his first year as a professional athlete.
- Demond Smith signed his first professional contract.



Upper Left: Our 9th grade basketball team was named the Adidas Super 64 Gold Division Champs at the Las Vegas Championship Game in July.

Lower Left: The Spartan Bantam girls team won first place in the 4 X 100 relay at the USATF regional track meet held in June in Oshkosh.

Adult Education Programming

During the 2011-2012 academic year, the Adult Education Program served 300 registered students, a higher number than in recent years for SSNC. The students participated in Basic Skills, GED Preparation, English as a Second Language, and computer classes. Transitional Jobs Program participants also took part in Adult Ed classes.

Based on our successful 2012 Adult Education and Family Literacy grant, the number of days per week of the GED class will increase from three to four and our Basic Skills/GED preparation class will add a third evening of instruction for the 2012 - 2013 academic year. The increased hours will provide a higher level of student preparedness for the GED exams.



Left: We are one of the only adult education programs that offer free child care, eliminating a major obstacle for many students.

Transitional Jobs Programming



Participants have achieved more than the goals set by the state – in terms of job placement and retention.



We have trained 109 individuals during the past two years and have placed 101 in transitional jobs. 69 participants are working in permanent jobs in one of the companies listed below.

As the primary objective of this program is to help the unemployed qualify for and maintain jobs with family-sustaining wages, we're pleased to announce that one of our single dads was able to purchase a home for his family. Several have purchased new or used vehicles, and four participants were able to enroll in school to pursue a trade.

We acknowledge the following partners for their admirable efforts and belief in this vital economic recovery program:

Host Employers:

Advanced Painting & Construction; AJ Harris Enterprise; All Night Child Care; Allrisk Financial & Services; Amawa

Halal Meat; Anderson & Anderson Construction, LLC ; Assure Homecare Services; Building Services & Consulting Inc.; Business Printing Solutions Plus, Inc.; Can't Stop Towing; Career Youth Development Outpatient Services; DNC Enterprises; Dreams & Visions Childcare; Enrichment Opportunities; Face2Face Community Services & Training; GENCO Pharmaceuticals Services; Gibraltar Industries Inc.; GREDE Holdings, Inc.; Guardian Investment Real-estate; Hentzen Coatings; House of Corned Beef; Job Development Resale Center, LLC ; Kroscher Property Management; Life Skills Academy; Mrs. Mary Learning Center; New Start Housing, LLC; Pereles Brothers Inc.; Porter Prince Investment, LLC; Ray's Consulting Group; Sherman & Associates; St. Camillus; A Strong Foundation Social Services; Supreme Cores; Thompson Process Services; TL Reese Corporation; Trinity Health & Home Care; Trinity Production, LLC

Family Programming

Silver Spring provides many opportunities throughout the year for parents and children to experience an evening of educational and recreational programs. Among these activities are Back to School Night, which provides school supplies to some 500 school age children; Safe Halloween; a Reading is Fundamental book distribution; and a Black History Month program. One book is selected each Family Night and, after reading it, families participate in a related art project, giving them ideas for activities that they can do at home. Support for this program comes from our United Way Literacy First grant.



An average of 200 people attend each Family Night.

UWM Silver Spring Community Nursing Center



Our Nursing Center has provided 25 years of healthcare service to thousands of children, teens, adults, and seniors each year. The nurses and nursing students have filled a void for people with limited or no access to nursing and health care, providing health screenings, family planning and reproductive health services, prenatal care, and referrals to other healthcare services.

NEW: The Westlawn Partnership for a Healthier Environment

This partnership program with 26 other community organizations was one of only three in the nation to be awarded a second grant from the United States

Environmental Protection Agency (EPA). Just a few of last year's efforts included:

- Asthma, pest management, and mold education and prevention
- Improving indoor air quality and the hazards of chemicals and pesticides
- Smoking cessation
- Planting community gardens and adding green spaces
- Healthy eating and increasing access to fresh produce and organic foods
- Bike riding safety and wellness activities
- Home visits and daycare assessments to identify health and safety risks



Above: Teens gather for a PREP (Personal Responsibility and Education Program) program meeting. Though many live in group homes, they now receive a Center membership. In addition to pregnancy prevention, PREP includes classes in financial literacy; the pursuit of post-secondary academic options; and date safety.

Emergency Services

Our four-day-a-week Emergency Food Pantry program is available to residents of zip codes surrounding the agency. On Fridays, seniors are provided with a stock box which contains a three-day supply of emergency food.

Bi-weekly deliveries of food come from the Hunger Task Force and Feeding America Eastern Wisconsin and also from schools, businesses, and service clubs. Funding for staffing the program is generously provided by United Way of Greater Milwaukee.

Used clothing is also provided at the pantry for all Center participants.



Above: We are fortunate to have many committed volunteers who assist with the unloading of delivery trucks, packing food boxes, carrying boxes to participants' cars, and stocking shelves. Some of the volunteers are former pantry clients themselves.

Left: 2,478 unduplicated people received food this year, an increase of 61% over the prior year. 46% skipped meals or ate less because they lacked sufficient food.

Community Connections



Above: Hundreds of volunteers and residents worked together to build a state-of-the-art playground at Westlawn. The project was a partnership among SSNC, the Housing Authority of the City of Milwaukee, the Westlawn Resident Council, Kaboom! Playgrounds, and Humana Inc.

Right: Banner Preparatory School is an alternative partnership school housed at SSNC that provides a second chance at success for students in grades 6 - 12 who need special attention provided in a small setting.

In addition to the programs described on the preceding pages, Silver Spring offers many services to residents of Westlawn and the surrounding neighborhood. Seniors can enjoy a bingo game three times a month and occasional field trips. Other offerings include a computer lab, open gym; fitness room; partnering with Havenwoods Economic Development Corporation; close ties to Police District 4 and the District Attorney's office; and complimentary photocopying and fax services.



Our Volunteers & Partners

Our Volunteers

Our volunteers are priceless. If you'd like to become one, or put together a team from your workplace or place of worship, please call 414 463-7960 x 86 to learn about various seasonal opportunities for you, your family, your company, or your religious organization.

Lee Bullock
Stephanie Bullock
Ewell Clinton
David Conner
Debra Davis
Tyrone Davis

Deloitte employees
Cheryl Dixon
Luther Dixon
Steve Dixon
Shelita Easley
Michael Ford

Jerry Gillie
Stephanie Gillie
Ernie Grayson
Martin Hogan
Dwayne Ingram
Jerry Johnson
Jeff Knox
Mary Kossik
Marie Lucas
Thomas Lucas
Otto McDuffie
Anthony McHenry
Keith McQuitter
Pierre Reynolds
Rockwell employees
Kaya Senaya
Shirley Senaya
Lamont Shelton
Willie Smith
Marvel Taylor
Dennis Thomas Sr.
Walter Triggs



Our Partners

84th Division US Army Reserve
Agape Community Center
Aldi's
Asset Builders of America
Associated Bank
Aurora Family Services
Banner Preparatory School
Boy Scouts of America
Milwaukee Council
Brighter Futures
Brownberry Ovens
Browning School
Bureau of Milwaukee Child Welfare
C.G. Schmidt
Cardinal Stritch University
Children's Hospital of Wisconsin
Children's Service Society of Wisconsin
City of Milwaukee Health Department
COA Youth & Family Centers
Community Advocates
Community Partners
Development Through Athletics
Direct Supply
District 4 Neighborhood Safety Team
Family Leadership Academy
Feeding America Eastern Wisconsin
Fighting Back

GENCO Pharmaceutical Services
Girls Scouts of Milwaukee Area
Greater Milwaukee Foundation
Milwaukee Succeeds
Greater Milwaukee Literacy Council
Growing Power
Havenwoods Economic
Development Corporation
Havenwoods Environmental
Awareness Center
Hentzen Coatings
Hope Network
Hunger Task Force of Greater Milwaukee
Jewish Family Services
John Burroughs Middle School
Journey House
KANDO
Knoebel and Associates
Learning Exchange
Marquette University
Marquette University High School
Medical College of Wisconsin
Metropolitan Milwaukee Fair
Housing Council
Milwaukee Area Technical College
Milwaukee Area Workforce
Investment Board
Milwaukee Brewers
Milwaukee Bucks

Milwaukee Christian Center
 Milwaukee County
 Milwaukee County Substance Abuse
 Prevention Coalition
 Milwaukee Dept. of City Development
 Milwaukee Housing Authority
 Milwaukee Job Corps
 Milwaukee Kickers
 Milwaukee North Sunrise Rotary
 Milwaukee Police Department 4th District
 MPS Recreation Division
 Milwaukee Public Library
 Milwaukee Public Schools
 Milwaukee Public Theatre
 Milwaukee Urban League
 Milwaukee Youth Sports Authority
 Neighborhood House of Milwaukee
 Next Door Foundation
 Nice Foundation, Inc.
 Nonprofit Center of Milwaukee
 Northcott Neighborhood House
 Northwest Secondary School
 Northwestern Mutual
 Obama School

Parenting Network
 Parklawn YMCA
 Peace for Change Alliance
 PEARLS for Teen Girls
 Pepsi Beverages Company
 Pick'n Save
 Planned Parenthood of Wisconsin
 Planning Council
 Public Allies
 Rockwell Automation African American
 Professional Network
 Rotork Process Controls
 Running Rebels
 Safe & Sound
 Salvation Army Sports League
 School of Career & Technical Education
 Select Milwaukee
 Sellars Wipers & Sorbents
 SER Jobs for Progress
 SET Ministry
 Social Development Commission
 Southeast Wisconsin Intergenerational
 Interracial Community Connections
 St. Aemilian-Lakeside

St. Robert School
 State of Wisconsin
 Summer Stars
 Teen Pregnancy Prevention Network
 Thurston Woods Campus
 UMOs
 U.S. Environmental Protection Agency
 United Neighborhood Centers of
 Milwaukee
 United States Department of Agriculture
 United Way of Greater Milwaukee
 US Bank
 University of Wisconsin-Milwaukee
 UW Extension
 UWM Athletic Department
 UWM College of Nursing
 UWM Educational Opportunity Center
 UWM School of Continuing Education
 UWM Youth Work Learning Center
 Westlawn Partnership for a
 Healthier Environment
 Westlawn Resident Council
 Wisconsin Beverage Association
 Wisconsin African American Tobacco

Prevention Network
 Wisconsin Community Services
 Wisconsin Early Childhood
 Education Association
 Wisconsin Foundation for
 Independent Colleges
 Wisconsin Probation and Parole
 Wisconsin Technical College System
 Wisconsin Women's Business
 Initiative Corporation
 YWCA
 Zamora Training, Inc.
 Zeta Phi Beta Sorority, Inc.: Z-Hope
 Zilber Neighborhood Initiative

SSNC Memberships

District Four Community Intervention
 Project
 Milwaukee Childhood Obesity
 Prevention Project
 United Neighborhood Centers of
 Milwaukee
 The Westlawn Partnership for a
 Healthier Environment



**MILWAUKEE
PUBLIC SCHOOLS**



Our Financial Report

SILVER SPRING NEIGHBORHOOD CENTER FINANCIALS AS OF JUNE 30, 2012

REVENUES

Government Grants	\$ 1,759,021	51.1%
Private Contributions & Grants	465,460	13.5%
United Way of Greater Milwaukee	588,643	17.1%
In-Kind Gifts	324,471	9.4%
Program & Services Fees	94,536	2.7%
Special Events	60,653	1.8%
Other Revenue	<u>146,803</u>	<u>4.3%</u>
Total Revenue	\$ 3,439,587	100.0%

EXPENSES

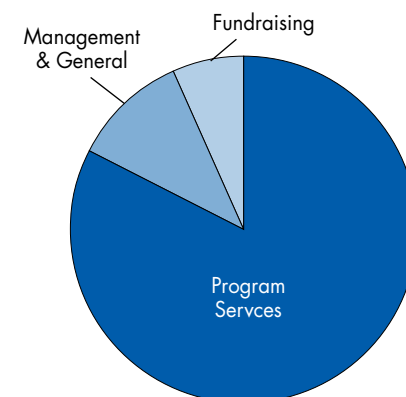
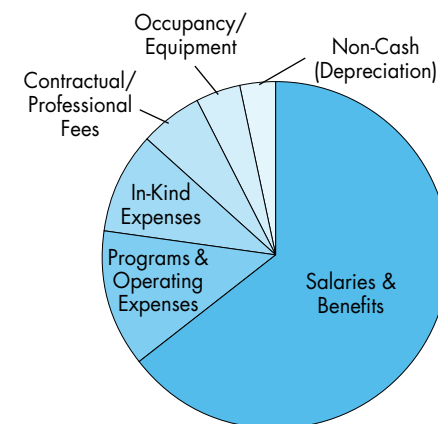
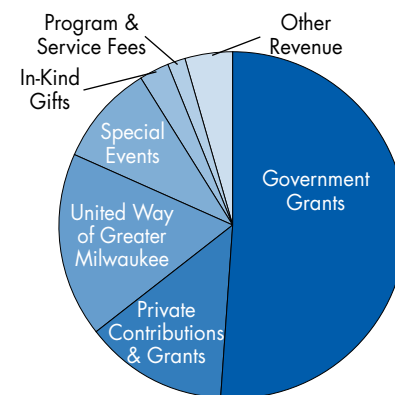
Salaries & Benefits	\$ 2,310,975	64.5%
Program & Operating Expenses	462,976	12.9%
In-Kind Expenses	338,816	9.5%
Contractual/Professional Fees	202,013	5.6%
Occupancy/Equipment	154,686	4.3%
Non-Cash (depreciation)	<u>114,409</u>	<u>3.2%</u>
Total Expenses	\$ 3,583,875	100.0%

PROFIT/(DEFICIT) (\$144,288)

PROFIT/(DEFICIT) excl. non-cash items (29,879)

PROGRAM, MANAGEMENT & FUNDRAISING

Program Services	\$ 2,964,105	82.7%
Management & General	384,886	10.7%
Fundraising	<u>234,884</u>	<u>6.6%</u>
Total	\$ 3,583,875	100.0%



Audited financial statements were prepared by Ritz, Holman LLP and are available by request. The numbers above are drawn from the 2012 audit, as approved by the Board of Directors of Silver Spring Neighborhood Center, Inc.

2011 - 2012 Donors

Platinum Level

United Way of Greater Milwaukee

\$50,000 and below

Forest County Potawatomi Community Foundation

Elaine and Martin Schreiber

US Bancorp Foundation

\$25,000 and below

Anonymous

Helen Bader Foundation

Kathie and John Buono

Phoebe R. and John D. Lewis Foundation

Goldi and Mark Miller

Northwestern Mutual Foundation

Jane Bradley Pettit Foundation

Walmart Foundation

\$10,000 and below

Corporations Caring for Kids, Inc.

Claire and Glen Hackmann

Manpower International Inc.

PNC Foundation

Sharlyn and Steven Smith

Julia and David Uihlein Charitable Foundation

Todd Wehr Foundation

Joseph and Vera Zilber Family Foundation

\$5,000 and below

Robert Arzbaecher

Associated Bank

Julie and Jim Bartos

BMO Harris Bank N.A.

Briggs and Stratton Corporation Foundation

Employees of Milwaukee, Milwaukee County, Milwaukee Public Schools and the State of Wisconsin

Ralph Evinrude Foundation

Constance P. Godfrey 2004 Trust

Kopmeier Family Fund

Krause Family Foundation, Inc.

Nancy and Arthur Laskin

M&I Foundation

Mary and Jim McMullen

Drs. Ann Bartos-Merkow and Steven Merkow

Karen and Brendan Moran

Diane and Richard Omdahl

United Way of Metropolitan Chicago

WE Energies

\$2,500 and below

Altria Client Services

Badger Meter Foundation

Alice Bronstad

Judy and John Carlton

Karen and Richard Christenson

Jennifer and Joe Clements

Mary and Hugh Denison

Sandy and George Dionisopoulos

Mary Ellen and Allan Froehlich

Herbert Forbes

Horizon Construction Group, Inc.

Lubar Family Foundation, Inc.

Kathleen and Steven Mannebach

Milwaukee North Sunrise Rotary Club

Mortgage Guaranty Insurance Company

Judy and Richard Neureuther

Northwestern Mutual Employees

Quarles and Brady LLC

Sara and Sean Scullen

Anne Booth and Charlie Trainer

Sandi and Ron Tunis

Wauwatosa Presbyterian Church

\$1,000 and below

Donna and Donald Baumgartner

Charlene T. Brown

Karen Robison and Karl Bucholz

Jill and Martin Crneckiy

Patricia and Harold Emch

The Florsheim/Yeager Family Fund

The Geiger Family Foundation

GENCO Pharmaceutical Services

Evan and Marion Helfaer Foundation

IMPACT

Mary Pat Jacoby

Johnson Controls, Inc.

JP Morgan Chase

Ruby Keys

Bradshaw Knight Foundation

Dennis Kuester

Marcus Corporation

Catherine and David Markson

Anthony McHenry

Asher and Susan Nichols

Family Foundation

Northwestern Mutual Foundation

Susan and Richard Pieper

Pollybill Foundation

Puelicher Foundation, Inc.

LyAnn and Mark Schultz

Allen H. and Suzanne L. Selig Family Foundation

Barbara Stein

Sodexo, Inc.

Ruth and Jonathan Treisman

Tri City National Bank

United Way Gifts from the Federal Campaign

United Way of Waukesha County, Inc.

UPS Employees

Denise White

Wm. Wrigley Jr. Company Foundation

\$500 and below

Barbara and Henry Althoen

Dick Becker

Jane and James Bell

CBRE

Anne and Daniel Crneckiy

Shyrida Cunningham
 Sandy Diekvoss
 Carla Dineen
 Charles Doherty
 Joanne Danforth and Stewart Edwards
 Pam and Dave Edyburn
 Anne and Dean Fitzgerald
 A.L. Hentzen Family Foundation
 Liz and Howard Frank
 Barbara Fuldner
 Jill and Mark Goldstein
 Idy and Bill Goodman
 Guaranty Bank F.S.B.
 David Harrell
 Supervisor Nikiya Harris
 Sue and Peter Hitler
 Dante Houston
 Hupy and Abraham
 Just Fore Kids Foundation
 Mary and Ted Kellner
 Lashonda Kendrick
 Jennine and Larry Kenny
 Patricia and Thomas Kihlslinger
 Judith Kuehnau
 Linda Laatsch-Lybeck
 Shakoor Lee
 Bethany and Vincent Lyles
 Joe Mallett
 Managed Health Services
 Roberta Marsells
 Nancy Maynard
 James McKeown
 Linda and John Mellows
 Scott Merz
 Margaret and Eric Miller
 Aline and James Mohr
 Kay C. Nemschoff
 Scott Nettesheim

Denard Oates
 Sandy and Allan Pasch
 Pilot Freight Services
 QPS Employment Group
 Ritz Holman LLP
 Alex E. Runner
 Melissa Shneyder
 Roger Siegel
 Nancy and Guy Smith
 States Drywall and Painting Inc.
 The Bartech Group
 The Four One Group
 Barbara Walber
 Laurence Raynard Walls
 Windhover Foundation
 Carmen and Eugene Witt
 Mary Thomas and Roger Wong
 Theresa and Sidney Yeldell
 Bev and Howard Zabler

\$250 and below

Darla Hium and F. Thomas Ament
 Debra Amos
 AT&T employees
 Laura and Mark Barnard
 Jean Bell-Calvin
 Korletta Birts
 Wendy Reed Bosworth and
 Robinson Bosworth
 Michelle Browne
 Browning Elementary School
 Shiloh and Keith Buchman
 Ralph Cefalu
 Michael J. Cleary
 Marc Colletti
 Joan Fagan and David Cross
 Liz and Jon Cyganiak

Laura Anderko and Robert Dinse
 Susan and Ronald Dix
 Harry S. Drake
 Dr. Kathleen Pritchard and
 William Durkin
 Phillip Edwards
 Fraser Engerman
 Tammy and Louie Flowers
 Rachel and Robert Formolo
 Sylvia Gladney
 Sarah and Viktor Gottlieb
 Shawn A. Hansbrough
 Harley-Davidson Foundation
 Linda and Victor Hunter
 Jack and Lucy Rosenberg Foundation
 Mary Ann Jackson
 Kaylin Jones
 Jeremy Keil
 Mary Joe and David Kern
 Debbie and John Kissinger
 Amy and Paul Kolo
 Juna and Thomas Krajewski
 Debra and David Kroes
 Laura Schulteis Kwaterski
 Catherine M. Latanski
 Sally Merrell and Ely Leichtling
 Robert Leonhardt
 Lois Longmire
 Kevin Makowski
 Stephen M. Malisow
 Tina and Von Mansfield
 Marsha Ruth Sehler Philanthropic Fund
 Memorial Evangelical Lutheran Church
 Riva and William Merkow
 Miriam Reading and Dick Miller
 Emily Morrison
 Elizabeth and James Neubauer
 Thomas A. Parks

Priscilla Parson
 Christian Paschke
 Benita Peavy
 Peterman Consulting, LLC
 Hendra and Marvin Pickett
 Candy and Bruce Pindyck
 PricewaterhouseCoopers employees
 William Randall
 Bobbie Recardo
 Lynda and Marvin Reitz
 DJ Rodrian
 Linda Rueth
 Karen and James Schlater
 Thomas M. Shafer
 Silver Spring Liquor
 Stano Landscaping Inc.
 Dr. Kathryn Stein
 Thomas W. Stock
 Diana Sutton
 Ann and Stuart Tisdale
 Patty and Jeffrey Trader
 Valuation Research Corporation
 Ken E. Ward
 WFA Staffing Group
 Claire Wycklendt
 Zilber Ltd.

\$100 and below

Joy and Ron Adams
 Becky and Robert Adlam
 Brenda M. Rafko and David T. Allen
 Carol and James Anderson
 Ernest Anderson
 Dolores and Fred Andre
 Nola and Eric Armbrust
 Jay Armbruster
 Michael Arney

Karen A'Rowan and Jan Louis Pritzl
 Patricia and John Avery
 Mary and Donald Balchunas
 Amy and Richard Balge
 Patricia and Robert Balge
 Becky and David Banaszynski
 Rochelle Bast
 Ted Baszler
 Jean and Chris Beisser
 Michael Benes
 Kathy and Larry Bennett
 Leota S. and Rollin F. Benson
 Marlene and Bert Bilsky
 Steven J Binkowski
 Jearline Black
 Danielle and Ramel Bly
 Aleta and Rob Boehm
 Courtney Boltz
 Monica Brady
 Barbara and Robert Branston
 Arthur Brazy
 Sharon and Thom Brown
 Sarah and Gregory Bruch
 Cynthia and Michael Bruneau
 Brenda Burnett
 Robin and Frank Busalacchi
 Paul Cain
 Nancy and David Carter
 Molly Cary
 Steve Chortek
 Helen and Gary Coates
 Rene and William Collins
 Jenni and Jason Correll
 Jennifer Thompson and Dr. Chris Davies
 Sandra A. Davis
 Michele Debrabant
 Kassandra D. B. Fox-Delaney and
 Thomas J. Delaney

Mary Jo and R. Thomas Dempsey
 Tony DeVries
 Venus and Jonathan Dickinson
 Nashelle and David Dineen
 Steve Dittman
 Judy and David Dorner
 Joan and Thomas Doucette
 Lauren and David Douglas
 Dr. Anne Dressel
 Matt Drvaric
 Terese and Robert Duffy
 Johnny Ealy
 Shalonda Earl
 Dale R. Easley
 Sherlyn Edget
 Jacob R. Ehmke
 Shannon Ehmke
 Tanisha Evans
 Ellen Evans
 Julie Everett
 Todd Firer
 Susan F. Fisher
 Susie and David Fondrie
 Jeffrey Frank
 Kelly and Peter Froehlich
 Jerry J. Fulmer
 Nancy J. Galloway
 Nancy and William Gaus
 Cheryl Gehl
 Dani and Shel Gendelman
 Inez and Gene Gilbert
 Steven M. Glaser
 Laurie Glass
 Sandra and Conrad Goodkind
 Walter Goodwyn
 Patti Gorsky
 Barbara and Donald Grande
 Kat Grinker

Nathan Gundrum
 Elizabeth and Charles Haas
 Stephanie Lyons and John Haensel
 Renata R. Hansbrough
 Karen Hartung
 Robert Haygood
 Sara and John Hein
 David Heller
 Eugenie and Earl Hildebrandt
 Deborah and David Hoffman
 Mary E. and Robert E. Holzrichter
 Mary Alice and William J. Houghton
 Jay Hyma
 Laurie A Inman
 Linda and Mark Ivy
 Ron Jahnke
 Jane and Donald Janicki
 Kay Jansen and Chuck Sachs
 Bette Janz
 Karen Jiles
 JK Liquor Inc.
 The Joint Commission
 Susan and Kevin Joy
 Eleanor and Henry Jung
 Katie Kasper
 Lori Keller
 Patrick E. Kelly
 Karen Kindel
 Tim Kleibor
 Teresa and Robert Klug
 Betty and Bill Koepsel
 Dennis J. Komassa
 James Krogmeier
 Leigh M. Kunde
 Kathryn Lammers
 Jordan Larson
 Lana Larson
 Kathleen and Ervin Lauer

Gracie Leonard
 Richard A. Levi
 John W. Lieber
 Patricia and Matthew Linn
 Patrice and Tom Linn
 Diane Linsy
 Maria Rodriguez and Emilio Lopez
 Karen Lukaszewicz
 David Lukaszewicz
 Shelly and Bill Madden
 Susan and Michael Madden
 Dan Madigan
 Sandra Malott
 Grace Manning
 Lisa Marcum
 Margaret J. Martin
 Marie and Blane Mc Cann
 Barbara and E. Michael McCann
 Kenneth McClendon
 George McCullough
 Sandra and Robert Meldman
 Betty Mingo
 Sandeep Mirani
 Cottrina Moore
 Colleen Moran
 Sarah Morgan
 Tiffany Morgan
 Jennifer R. Morrison
 Ellen and Timothy Murphy
 Catherine and Brian Murphy
 Lucia and Jack Murtaugh
 Carol and Douglas Naarup
 Nygel Nabong
 David A. Nelson
 Joyce and John Nelson
 Teresa Nichols
 William Nimitz
 Debra Novak

Shirley and James Nowak
 Patricia Owens
 Anil Pabbisetty
 Mary and Steven Paizer
 Vinita Paul
 Lois and Richard Pauls
 Paulita Payton-Murphy
 Laura and Adam Peck
 Rocco Perugini
 Bill Peterson
 John Peterson
 Monica Phillip
 Pinsky Family Fund
 Samuel C. Pollard
 Lakia R. Purifoy
 Judy and Dennis Purtell
 Kathleen Raab
 Kim Ramstack
 Bartholomew F. Reuter
 Lois and David Ribbens
 Joanne and Robert Richards
 Don Richards
 Marie Kingsbury and Leo Ries
 Lilly Rivlin
 Marcia and Earl Sadowsky
 Sam's Silver Spring Food Town
 Mary and Robert Schmidt
 Marion and William Schreiber
 Kay A. Buelke Schroeder
 Susan Seeborg
 Lisa and David Seiler
 Janis and Richard Sell
 Dominique Smith and Christopher Shaw
 Mary and Randall Siegler
 Sheila M. Siegler
 Luke E. Sims
 Julie and Dennis Simuncak

Sandra and Michael Skrobiszewski
 Lucille Skuteris
 Social Development Commission
 Lawrence R. Sorce
 Amanda M. Stanley
 Valerie and David Stefanich
 Marcia and Frederick Stein
 Susan G. Stein
 Drs. Emily Fine and Stephen Stein
 Sandy and Bob Stelter
 Jean and Louis Stoviak
 John Suberlak
 April and Bryan Sullivan
 Patricia J. Swanson
 Dena and Timothy Taff
 Nancy J. Tawney
 Michael R. Taylor
 Peter D. Taylor Jr.
 Konrad C. Testwuide
 Brenda Thompson
 Ruth and James Thorn
 Verena and Thomas Tonnesen
 Michelle Wagner
 Daniel D. Walker
 Lyn and Bob Weber
 Carrie Weddle
 Andrea Weddle-Henning
 Angela Wendorf
 Benjamin Wendorf
 Richard J. White
 Jan White
 Michael White
 Sam Williams
 Annette Polly Williams
 Vinnie Wisniewski
 Wm. K. Walthers, Inc.
 Dan Wolfgram

Hillary Wucherer
 Alice Linn Wycklendt
 Dan Wycklendt
 Catherine and James Wynne

Contract/Government Grants

Brighter Futures
 Environmental Protection Agency
 Feeding America Eastern Wisconsin
 Fighting Back
 Hunger Task Force
 Medical College of Wisconsin -
 Healthy Wisconsin Partnership
 Program
 Milwaukee County Sports Authority
 Milwaukee Public Schools
 Public Allies
 State of Wisconsin Department
 of Children and Families
 Summer Stars
 Transitional Jobs
 Wisconsin Department of
 Public Instruction
 United Neighborhood Centers
 of Milwaukee
 USDA Child and Adult Care
 Food Program
 Wisconsin Technical College System –
 Adult Education and Family Literacy

Gifts of Tribute

In memory of Steven Bartley
 Shakoor Lee
 In honor of Jim Bartos
 Julie Everett
 In honor of John Carlton
 Julie and Jim Bartos

Todd Firer
 Marie and Blane Mc Cann
 Scott Nettesheim
 Janis and Richard Sell
 Jan White
 In honor of Hugh Denison
 Becky and Robert Adlam
 Jim and Julie Bartos
 Ted Baszler
 Arthur Brazy
 Ralph Cefalu
 Michael J. Cleary
 Mary Jo and R. Thomas Dempsey
 Susan and Ronald Dix
 Judy and David Dorner
 Harry S. Drake
 Matt Drvaric
 Susie and David Fondrie
 Cheryl Gehl
 Sandra and Conrad Goodkind
 Stephanie Lyons and John Haensel
 Sara and John Hein
 Susan and Kevin Joy
 Eleanor and Henry Jung
 Debbie and John Kissinger
 Teresa and Robert Klug
 Bradshaw Knight Foundation
 Robert Leonhardt
 John W. Lieber
 Stephen M. Malisow
 Margaret and Eric Miller
 Emily Morrison
 Kay C. Nemschoff
 William Nimtz
 Mary and Steven Paizer
 Vinita Paul
 Lois and Richard Pauls

Laura and Adam Peck
 Pinsky Family Fund
 Lois and David Ribbens
 Mary and Robert Schmidt
 Thomas M. Shafer
 Luke E. Sims
 Lawrence R. Sorce
 Thomas W. Stock
 Konrad C. Testwuide
 Verena and Thomas Tonnesen
 Daniel D. Walker
 Richard J. White
 Alice Linn Wycklendt
 In honor of Mary and Hugh Denison
 Ralph Cefalu
 In memory of Rob Fontecchio
 Stephen M. Malisow
 In memory of Mark Kaseeska
 Laura Anderko and Robert Dinse
 In honor of Andy Koepsel
 Betty and Bill Koepsel
 In memory of Edith Markson
 Catherine and David Markson
 In honor of Mary Pat Ninneman and
 Bill Jacoby
 Kathie and Joh Buono
 In honor of Bobbie Recardo
 Carrie Weddle
 In honor of Elaine Schreiber
 Martin Schreiber
 In honor of Elaine and Martin Schreiber
 Juna and Thomas Krajewski
 In memory of Betty Stein
 Dr. Kathryn Stein
 In honor of Susan G. Stein
 Kat Grinker

In memory of James Siegler
 Brenda M. Rafko and David T. Allen
 Nashelle and David Dineen
 The Bud Dineen Family
 Susan F. Fisher
 Rachel and Robert Formolo
 Karen Kindel
 Catherine M. Latanski
 Catherine and Brian Murphy
 Bartholomew F. Reuter
 Mary and Randall Siegler
 Sheila M. Siegler
 Lucille Skuteris
 Sandy and Bob Stelter
 Ruth and James Thorn
 Kathleen and Ervin Lauer
 April and Bryan Sullivan
 Catherine and James Wynne
 The Joint Commission
 In memory of Roland Thomas
 Mary Thomas and Roger Wong
 In honor of UWMCON-SSCNC staff
 Shakoore Lee
 In memory of John G. Wahlig
 Wm. K. Walthers, Inc.
 In memory of Philip W. Weber
 Stephen M. Malisow
 In memory of Bonnie Weiland
 Stephen M. Malisow

In-Kind Contributions

Angela Aguilar
 Pamela Banks
 Janet Bitzan
 Brookfield Central High School
 Browning Elementary School
 Stephanie and Lee Bullock

Debra Burks
 Nick Calvelli
 Kim Cheatham
 Ewell Clinton
 Roderick Coleman
 David Conner
 Cathy Curties
 Jennifer Thompson and Chris Davies
 Georgia Dennis
 Lindie N. Dimmick
 Direct Supply, Inc.
 Fashion Angels Enterprises
 Feeding America - Eastern Wisconsin
 Mary Ellen and Allan Froehlich
 Kelly and Peter Froehlich
 Rachel Fruchtmann
 Shelia Gee
 GENCO Supply Chain Solutions
 Helaine Glass
 House of Corned Beef
 Janice Gray
 Sally Guerrero
 Darlyne Haertlein
 Sally and Dave Hanson
 Todd Hoemke
 Marakie Holliman
 Kathy and Steven Hooper
 Kathy Johnson
 Priscilla Jones
 Kapco, Inc.
 Kat and Mouse Graphic Design
 Mollie Kenny
 Jeff Knox
 Mary Kossik
 Susan and Jack LeVeque
 Karri Liebe
 Mandl Bank

Dan Madigan
 Anthony McHenry
 Milwaukee Brewers Baseball Club
 Milwaukee North Sunrise Rotary
 Brendan Moran
 MPTV
 North Shore Bank
 Northwest Secondary School
 NML Graphics
 Pavlic Vending Service, Inc.
 Tina Pech
 Janine Prill
 Jim Ratajczyk
 Lisa M. Reinhardt
 Dean Rossey Sr
 Salvation Army
 Pavlic Vending Services, Inc.
 Perla Santiago
 Pick'n Save
 Elaine and Martin Schreiber
 Lisa and David Seiler
 Henten Sharita
 Shoreline Real Estate
 Nick Smesko
 Susan G. Stein
 Joan Tarachow
 Shirley Thornton
 United Way of Greater Milwaukee
 Earnestine Wallace
 We Energies
 Denise White
 Shaunte Wilson
 Toni Wilson
 Bonnie Yopps
 Ruth Zarling