



## Apoptosis Research Tools, Product Brochure

**Interest in any of the products,  
request or order them at Bio-Connect.**

Bio-Connect B.V.  
Begonialaan 3a  
6851 TE Huissen  
The Netherlands

**T NL** +31 (0)26 326 44 50  
**F NL** +31 (0)26 326 44 51  
**E** [info@bio-connect.nl](mailto:info@bio-connect.nl)  
**W** [www.bio-connect.nl](http://www.bio-connect.nl)

**T BE** +32 (0)2 503 03 48  
**F BE** +32 (0)2 503 03 27





# Apoptosis

RESEARCH TOOLS

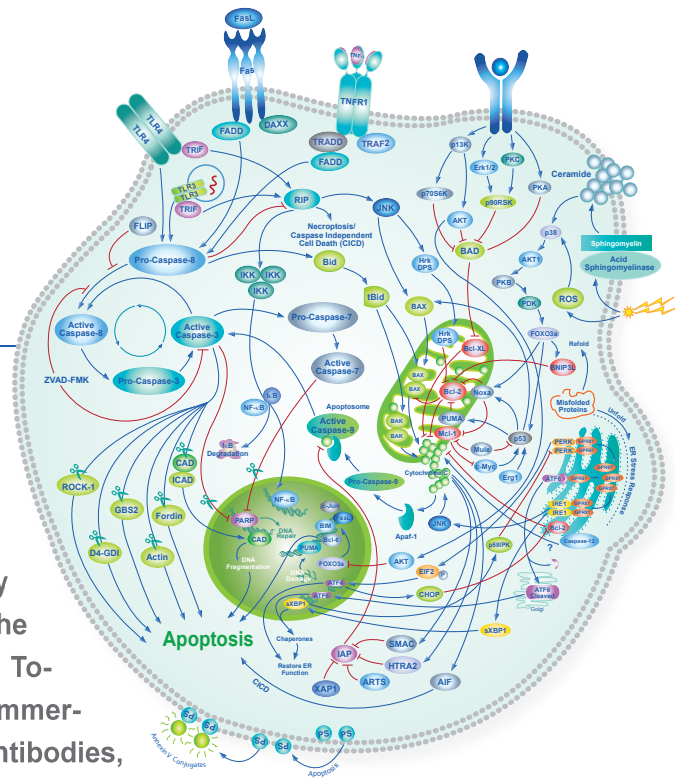
# Apoptosis

The availability of research tools for studying apoptosis has increased dramatically over the last ten years, paralleling the explosion of knowledge in the field. Today there is an extensive array of commercially available products including antibodies, inhibitors, dyes, recombinant proteins, as well as specialized kits to study and probe the complex process of apoptosis. Additionally, new products as well as new formats of existing products are being rapidly commercialized by biotechnology companies worldwide.

With an abundance of reagents to choose from, selecting and sourcing an appropriate combination of reagents for a particular study can be challenging. Assay selection is typically influenced by the questions being asked and the desired or available techniques. Quite often a combination of assays are used to dissect the process of apoptosis in a particular model system.

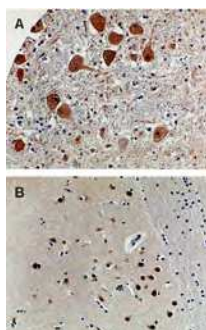
At IMGENEX, we continually develop and select products that enable researchers to detect and track the process of apoptosis as it occurs over time, and to measure different phenomenon associated with apoptosis such as caspase activation, chymotrypsin-serine protease activation, mitochondrial depolarization, and downstream events including substrate cleavage. Our growing portfolio of antibodies and inhibitors to proteins and processes involved in apoptosis signaling encompasses a wide variety of techniques including flow cytometry, western blot analysis, immunoprecipitation, immunohistochemistry, immunofluorescence micro-scropy, and blocking apoptosis. Additionally, we have recently launched RNA interference (RNAi/siRNA) tools to knock down genes involved in apoptosis. These siRNAs can be used to transiently silence a specific gene in cell lines or to generate stable knock-down cell lines.

IMGENEX has an active technology development program, please contact us for more information regarding commercializing your technology or collaborating with us to develop new technology.



Description	Cat No	Format	Clone	Host	Species	Application
<b>14-3-3 sigma/Stratifin</b>	IMG-3951	PAP	N/A	Goat	H	ELISA, WB
<b>A1</b>	IMG-5657	Sera	N/A	Rabbit	Ge, M, R	IHC-Fr, IHC-P, IP, WB
<b>ACE2 (NT)</b>	IMG-5545	PAP	N/A	Rabbit	H	IHC-P, WB
<b>Acinus</b>	IMG-4051	Purified	N/A	Rabbit	H, M	WB
<b>Acinus</b>	IMG-4052	Purified	N/A	Rabbit	H, M	WB
<b>Acinus (CP)</b>	IMG-5546	PAP	N/A	Rabbit	H	IF/ICC, WB
<b>Acinus (CT)</b>	IMG-5547	PAP	N/A	Rabbit	H	IF/ICC, WB
<b>ACT</b>	IMG-4043	Purified	N/A	Rabbit	H	WB
<b>ADAM10 (CT)</b>	IMG-5635	Purified	N/A	Rabbit	H	IF/ICC, WB
<b>ADNP</b>	IMG-4097	Purified	N/A	Rabbit	H	WB
<b>AES (CT)</b>	IMG-5408	PAP	N/A	Rabbit	H, M, R	IF/ICC
<b>AES (NT)</b>	IMG-5409	PAP	N/A	Rabbit	H, M	WB
<b>AFX (Ab-197)</b>	IMG-90483-2	PAP	N/A	Rabbit	H, M, R	IHC-P, WB
<b>AFX (Ser197)</b>	IMG-90235-1	PAP	N/A	Rabbit	H, M, R	IHC-P, WB
<b>AIF</b>	IMG-5658	Sera	N/A	Rabbit	Multiple	IHC-Fr, IHC-P, IP, WB
<b>AIF (IN)</b>	IMG-303	Purified	N/A	Rabbit	H, M, R	IHC-P, WB
<b>AIF1/IBA1 (isoform 3)</b>	IMG-30020	PAP	N/A	Goat	H	WB
<b>AKT1</b>	IMG-5411	PAP	N/A	Rabbit	H, M, R	IHC-P, WB
<b>ALS2CR2/ILPIP (IN)</b>	IMG-5487	PAP	N/A	Rabbit	H, M, R	WB
<b>Ambra1</b>	IMG-6139A	Purified	N/A	Rabbit	Multiple	WB
<b>Annexin A10/Annexin 14</b>	IMG-3169	PAP	N/A	Goat	H, M	IHC-P, ELISA
<b>Apaf 1</b>	IMG-5659	Sera	N/A	Rabbit	H	IHC-Fr, IHC-P, IP, WB
<b>Apaf 1</b>	IMG-5660	Sera	N/A	Rabbit	H	IHC-Fr, IHC-P, IP, WB
<b>Apaf 1</b>	IMG-5661	Sera	N/A	Rabbit	Multiple	IHC-Fr, IHC-P, IP, WB
<b>Apaf 1</b>	IMG-80469	Purified	N/A	Rabbit	H, M, R	IHC-P
<b>Apaf 1 (CT)</b>	IMG-5549	PAP	N/A	Rabbit	H, M, R	IHC-P, WB
<b>Apaf 1 (NT)</b>	IMG-119	Purified	N/A	Rabbit	H, M, R	WB
<b>APG3L/APG3P</b>	IMX-6182	Sera	N/A	Rabbit	Multiple	ELISA
<b>APG4B</b>	IMG-6087A	Purified	N/A	Rabbit	Bovine, H, M	WB
<b>APG4B</b>	IMG-6088A	Purified	N/A	Rabbit	H, M, R	IHC-P, WB
<b>APG4C Isoform 7/8</b>	IMX-6144	Sera	N/A	Rabbit	Chimp, H	ELISA
<b>APG5L</b>	IMG-6085A	PAP	N/A	Rabbit	Multiple	IHC-P, WB
<b>APG5L</b>	IMX-6091	Sera	N/A	Rabbit	Cow, Dog, H	ELISA
<b>APG7 (CT)</b>	IMG-5412	PAP	N/A	Rabbit	H, M	WB
<b>APG7 (NT)</b>	IMG-5413	PAP	N/A	Rabbit	H, M	WB
<b>APG7L</b>	IMX-6181	Sera	N/A	Rabbit	H, Mk, R	ELISA
<b>APG7L</b>	IMG-6455A	Purified	N/A	Rabbit	H	IHC-P, WB
<b>APG8C/MAP1LC3C</b>	IMX-6120	Sera	N/A	Rabbit	H, Mk	ELISA
<b>APG10L</b>	IMG-6174A	Purified	N/A	Rabbit	H, M, R	IHC-P, WB
<b>APG10L</b>	IMX-6147	Sera	N/A	Rabbit	Chimp, H	ELISA
<b>APG12L</b>	IMX-6158	Sera	N/A	Rabbit	Chimp, Dog, H	ELISA
<b>APG16L</b>	IMG-6163A	Purified	N/A	Rabbit	Multiple	WB
<b>APIP/CG129/MMRP19</b>	IMG-5030	Purified	N/A	Rabbit	H	WB
<b>APIP/CG129/MMRP19</b>	IMG-5095A	Purified	19F461	Mouse	H	WB
<b>APIP/CG129/MMRP19</b>	IMG-5097A	Purified	19F424	Mouse	H	WB
<b>APIP1/2/CG129/MMR</b>	IMX-5205	Sera	N/A	Rabbit	H	ELISA

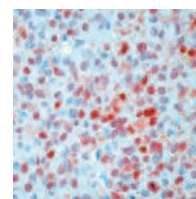
**APAF1**  
(IMG-5659)



Formalin-fixed, paraffin-embedded human brain tissue sections stained for Apaf 1 expression using IMG-5659 at 1:2000. A. Brain stem. B. Cortex. Hematoxylin-eosin counterstain.

Description	Cat No	Format	Clone	Host	Species	Application
<b>API2/CG129/MMRP19</b>	IMX-5204	Sera	N/A	Rabbit	H	ELISA
<b>APOBEC3G (NT)</b>	IMG-5550	PAP	N/A	Rabbit	H	IHC-P, WB
<b>Apollon/Bruce</b>	IMX-5230	Sera	N/A	Rabbit	H	ELISA
<b>ARAP1</b>	IMX-6347	Sera	N/A	Rabbit	Multiple	ELISA
<b>ARC</b>	IMG-170	Purified	N/A	Rabbit	H	WB
<b>ARMER (CT)</b>	IMG-5637	Purified	N/A	Rabbit	H, M	IHC-P, WB
<b>ASC/TMS1</b>	IMG-5416	PAP	N/A	Rabbit	H	WB
<b>ASC/TMS1</b>	IMG-5662	Sera	N/A	Rabbit	H	IHC-Fr, IHC-P, IP, WB
<b>ASC2/POP1</b>	IMG-5663	Sera	N/A	Rabbit	Multiple	IHC-Fr, IHC-P, IP, WB
<b>ASK1</b>	IMG-5664	Sera	N/A	Rabbit	H	IHC-Fr, IHC-P, IP, WB
<b>ASK1 (Ab-966)</b>	IMG-90463-2	PAP	N/A	Rabbit	H, M	IHC-P
<b>ASK1 (Pan-Ab83)</b>	IMG-90455-2	PAP	N/A	Rabbit	H	IHC-P, WB
<b>ASK1 (Ser83)</b>	IMG-90266-1	PAP	N/A	Rabbit	H	IHC-P, WB
<b>ASK1 (Ser966)</b>	IMG-90267-1	PAP	N/A	Rabbit	H, M	IHC-P
<b>ATF6</b>	IMG-273	Purified	70B1413.1	Mouse	Multiple	ChIP, IF/ICC, IHC-Fr, IHC-P, IP, WB
<b>ATM (Ser1981)</b>	IMG-90221-1	PAP	N/A	Rabbit	H, M	IHC-P
<b>AXUD1</b>	IMG-4134	Purified	N/A	Rabbit	H	WB
<b>BACE2 (CT)</b>	IMG-5552	PAP	N/A	Rabbit	H	IHC-P, WB
<b>BAD</b>	IMG-5665	Sera	N/A	Rabbit	H	IHC-Fr, IHC-P, IP, WB
<b>BAD</b>	IMG-5666	Sera	N/A	Rabbit	M, R	IHC-Fr, IHC-P, IP, WB
<b>BAD</b>	IMG-5667	Sera	N/A	Rabbit	H	IF/ICC, IHC-Fr, IHC-P, IP, WB
<b>BAD (Ser112)</b>	IMG-90179-1	PAP	N/A	Rabbit	H, M, R	IHC-P, WB
<b>BAD (Ser155)</b>	IMG-90180-1	PAP	N/A	Rabbit	H, M, R	IHC-P, WB
<b>BAD-cleaved</b>	IMG-463	Purified		Rabbit	H	WB
<b>BAFF-R (CT)</b>	IMG-5553	PAP	N/A	Rabbit	H, M, R	IHC-P, WB
<b>BAG-1</b>	IMG-5668	Sera	N/A	Rabbit	Multiple	IHC-Fr, IHC-P, IP, WB
<b>BAG-1</b>	IMG-5669	Sera	N/A	Rabbit	H, M, R	IHC-Fr, IHC-P, IP, WB
<b>BAG-1</b>	IMG-5670	Sera	N/A	Rabbit	H, M, R	IHC-Fr, IHC-P, IP, WB
<b>BAG-1</b>	IMG-5671	Sera	N/A	Rabbit	H, M, R	IHC-Fr, IHC-P, IP, WB
<b>BAG-1</b>	IMG-5672	Sera	N/A	Rabbit	H, M, R	IHC-Fr, IHC-P, IP, WB
<b>BAG-1</b>	IMG-5673	Sera	N/A	Rabbit	H, M, R	IHC-Fr, IHC-P, IP, WB
<b>BAG-1</b>	IMG-80238	Purified	3.10G3E2	Mouse	H	IHC-P, WB
<b>BAG-2</b>	IMG-3842	PAP	N/A	Goat	H	ELISA, WB
<b>BAG-2</b>	IMG-5674	Sera	N/A	Rabbit	H	IF/ICC, IHC-Fr, IHC-P, IP, WB
<b>BAG-3</b>	IMG-5675	Sera	N/A	Rabbit	H	IHC-Fr, IHC-P, IP, WB
<b>BAG-3</b>	IMG-5676	Sera	N/A	Rabbit	H, M	IHC-Fr, IHC-P, IP, WB
<b>BAG-4</b>	IMG-5677	Sera	N/A	Rabbit	H	IHC-Fr, IHC-P, IP, WB
<b>BAG-5</b>	IMG-5678	Sera	N/A	Rabbit	Multiple	IHC-Fr, IHC-P, IP, WB
<b>BAK</b>	IMG-5679	Sera	N/A	Rabbit	H	IHC-Fr, IHC-P, IP, WB
<b>BAK</b>	IMG-80415	Purified	N/A	Rabbit	Hamster, H, M	IHC-P
<b>BAK (NT)</b>	IMG-5640	Purified	N/A	Rabbit	H, M	IF/ICC, WB
<b>BAR</b>	IMG-5680	Sera	N/A	Rabbit	H	IHC-Fr, IHC-P, IP, WB
<b>BAR</b>	IMG-5681	Sera	N/A	Rabbit	H	IHC-Fr, IHC-P, IP, WB
<b>Bax</b>	IMG-5682	Sera	N/A	Rabbit	H, M	IHC-Fr, IHC-P, IP, WB
<b>Bax</b>	IMG-5683	Sera	N/A	Rabbit	Ge, M, R	IHC-Fr, IHC-P, IP, WB
<b>Bax</b>	IMG-5684	Sera	N/A	Rabbit	Multiple	IHC-Fr, IHC-P, IP, WB

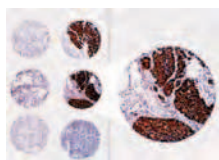
**BAG-1**  
(IMG-80238)



IHC analysis of BAG-1 formalin-fixed paraffin embedded human breast carcinoma using IMG-80238.

Description	Cat No	Format	Clone	Host	Species	Application
<b>Bax</b>	IMG-80165	Purified	2D2	Mouse	H	IHC-P, WB
<b>Bax (NT)</b>	IMG-5641	Purified	N/A	Rabbit	H	IHC-P, WB
<b>Bcl-2</b>	IMG-3181	PAP	N/A	Goat	H	ELISA, WB
<b>Bcl-2</b>	IMG-5685	Sera	N/A	Rabbit	Cat, Dog, H	IHC-Fr, IHC-P, IP, WB
<b>Bcl-2</b>	IMG-5686	Sera	N/A	Rabbit	Cat, Dog, H	IHC-Fr, IHC-P, IP, WB
<b>Bcl-2</b>	IMG-5687	Sera	N/A	Rabbit	M	IHC-Fr, IHC-P, IP, WB
<b>Bcl-2</b>	IMG-5688	Sera	N/A	Rabbit	Multiple	IHC-Fr, IHC-P, IP, WB
<b>Bcl-2</b>	IMG-5689	Sera	N/A	Rabbit	H	IHC-Fr, IHC-P, IP, WB
<b>Bcl-2</b>	IMG-80018	T.C. Sup.	124	Mouse	H	IHC-Fr, IHC-P, WB
<b>Bcl-2</b>	IMG-80093	Purified	100/D5	Mouse	H	IHC-Fr, IHC-P, IP, WB
<b>Bcl-2 (NT)</b>	IMG-5642	Purified	N/A	Rabbit	H, M	IHC-P, WB
<b>Bcl-3</b>	IMG-497	Purified	N/A	Rabbit	H	WB
<b>Bcl-6</b>	IMG-582	Purified	N/A	Rabbit	H, M	WB
<b>Bcl-6</b>	IMG-80094	T.C. Sup.	P1F6	Mouse	H	IHC-Fr, IHC-P, WB
<b>Bcl-6</b>	IMG-80292	T.C. Sup.	PG-B6P	Mouse	Multiple	IHC-P
<b>Bcl-10</b>	IMG-4026	Purified	N/A	Rabbit	H	WB
<b>Bcl-G</b>	IMG-4083	Purified	N/A	Rabbit	H	WB
<b>Bcl-G (Long Form)</b>	IMG-4084	Purified	N/A	Rabbit	H	WB
<b>Bcl-rambo</b>	IMG-570	Sera	N/A	Rabbit	H	WB
<b>Bcl-X</b>	IMG-80167	Purified	2H12	Mouse	H, M, Pig, R	IF/ICC, IHC-Fr, IHC-P, IP, WB
<b>Bcl-X</b>	IMG-80459	Purified	N/A	Rabbit	H, M	IHC-P
<b>Bcl-XL</b>	IMG-5612	Purified	N/A	Rabbit	H	WB
<b>Bcl-XL/Bcl-XS</b>	IMG-276	Purified	N/A	Rabbit	H	WB
<b>Bcl-XL+S</b>	IMG-5690	Sera	N/A	Rabbit	Multiple	IHC-Fr, IHC-P, IP, WB
<b>Bcl-XL+S</b>	IMG-5691	Sera	N/A	Rabbit	Multiple	IHC-Fr, IHC-P, IP, WB
<b>Bcl-XL+S</b>	IMG-5692	Sera	N/A	Rabbit	Multiple	IHC-Fr, IHC-P, IP, WB
<b>Bcr/Abl (Y276)</b>	IMG-6385A	PAP	N/A	Rabbit	Multiple	WB
<b>Beclin-1</b>	IMX-6176	Sera	N/A	Rabbit	H	ELISA
<b>Beclin-1 (NT)</b>	IMG-5423	PAP	N/A	Rabbit	H, M, R	WB
<b>Bi-1</b>	IMG-5796	Purified	20F430	Mouse	H, M, R	IHC-P
<b>Bid</b>	IMG-3812	PAP	N/A	Goat	H	WB
<b>Bid</b>	IMG-5693	Sera	N/A	Rabbit	Multiple	IHC-Fr, IHC-P, IP, WB
<b>Bid</b>	IMG-5694	Sera	N/A	Rabbit	Multiple	IHC-Fr, IHC-P, IP, WB
<b>Bid</b>	IMG-5695	Sera	N/A	Rabbit	Multiple	IHC-Fr, IHC-P, IP, WB
<b>Bid (CT)</b>	IMG-5613	Purified	N/A	Rabbit	H, M	WB
<b>Bif</b>	IMG-3426	PAP	N/A	Goat	H	WB
<b>Bif-1</b>	IMG-265A	Purified	30A882.1.1	Mouse	H	IP, WB
<b>Bik</b>	IMG-5696	Sera	N/A	Rabbit	Multiple	IHC-Fr, IHC-P, IP, WB
<b>BIM (Ab-65)</b>	IMG-90570-2	PAP	N/A	Rabbit	H, M, R	IHC-P, WB
<b>Bim (BimAD, BimACD, &amp; BimABCD isoforms)</b>	IMG-3164	PAP	N/A	Goat	H	WB
<b>BIM (Ser69/65)</b>	IMG-90336-1	PAP	N/A	Rabbit	H, M, R	IHC-P
<b>Bim/BOD</b>	IMG-171	Purified	N/A	Rabbit	H, M, R	WB
<b>Bim/BOD (IN2)</b>	IMG-5424	PAP	N/A	Rabbit	H, M, R	WB
<b>Bit1 (IN)</b>	IMG-5425	PAP	N/A	Rabbit	H, M	WB
<b>Bit1 (NT)</b>	IMG-5426	PAP	N/A	Rabbit	H, M, R	WB

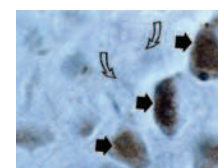
**Bcl-2**  
(IMG-5689)



Immunohistochemical analysis of Bcl-2 expression in a formalin-fixed, paraffin-embedded human prostate cancer tissue array using IMG-5689 at 1:2000.

Description	Cat No	Format	Clone	Host	Species	Application
<b>BLyS/BAFF/THANK</b>	IMG-247	Purified	N/A	Rabbit	H, M	WB
<b>Bmf (CT)</b>	IMG-5427	PAP	N/A	Rabbit	H	WB
<b>Bmf (NT)</b>	IMG-5428	PAP	N/A	Rabbit	H, M	WB
<b>BMI1</b>	IMG-6362A	Purified	N/A	Rabbit	Multiple	IHC-P, WB
<b>BMI1</b>	IMX-6345	Sera	N/A	Rabbit	Multiple	ELISA
<b>Bnip3L (IN)</b>	IMG-5429	PAP	N/A	Rabbit	H	WB
<b>Bonzo (CT)</b>	IMG-5591	Purified	N/A	Rabbit	H	WB
<b>BRAF35</b>	IMG-4070	Purified	N/A	Rabbit	H	WB
<b>CARD6</b>	IMG-5697	Sera	N/A	Rabbit	H	IHC-Fr, IHC-P, IP, WB
<b>CARD6</b>	IMG-5698	Sera	N/A	Rabbit	H	IHC-Fr, IHC-P, IP, WB
<b>CARD10/BIMP1/CARMA3</b>	IMG-5605	Purified	N/A	Rabbit	H, M	WB
<b>CARMA1/CARD11</b>	IMG-5435	PAP	N/A	Rabbit	H, M	WB
<b>CARMA9/CARD9</b>	IMG-5434	PAP	N/A	Rabbit	H	WB
<b>CASP4</b>	IMG-3764	PAP	N/A	Goat	H	WB
<b>Caspase-1</b>	IMG-5025	Purified	N/A	Rabbit	H	IHC-P, WB
<b>Caspase-1</b>	IMG-5028	Purified	14F468	Mouse	H, M	IHC-P, WB
<b>Caspase-1</b>	IMG-80402	Purified	N/A	Rabbit	H, M, R	IHC-P
<b>Caspase-1 (CT)</b>	IMG-5554	PAP	N/A	Rabbit	H	IHC-P, WB
<b>Caspase-2</b>	IMG-585	Ascites	18E809.3	Mouse	H	WB
<b>Caspase-2 (NT)</b>	IMG-5557	PAP	N/A	Rabbit	H, M	IF/ICC, WB
<b>Caspase-3</b>	IMG-5699	Sera	N/A	Rabbit	Multiple	IHC-Fr, IHC-P, IP, WB
<b>Caspase-3</b>	IMG-80215	Purified	3CSP03	Mouse	H	IHC-Fr, IHC-P, IP, WB
<b>Caspase-3</b>	IMG-80432	Purified	N/A	Rabbit	Multiple	IHC-P
<b>Caspase-3 (Active/Cleaved)</b>	IMG-5700	Sera	N/A	Rabbit	Multiple	IHC-Fr, IHC-P, IP, WB
<b>Caspase-3 (Pro/Active)</b>	IMG-144A	Purified	31A1067	Mouse	H, M, R	IHC-Fr, IHC-P, WB
<b>Caspase-3 (Pro/Active)</b>	IMG-145	Purified	31A893	Mouse	H	WB
<b>Caspase-4 (NT)</b>	IMG-5558	PAP	N/A	Rabbit	H	IHC-P, WB
<b>Caspase-5 (IN)</b>	IMG-5439	PAP	N/A	Rabbit	H	WB
<b>Caspase-6</b>	IMG-80271	Ascites	6CSP03	Mouse	H	IHC-P
<b>Caspase-6 (Active/Cleaved)</b>	IMG-5701	Sera	N/A	Rabbit	Multiple	IHC-Fr, IHC-P, IP, WB
<b>Caspase-6 (NT)</b>	IMG-5559	PAP	N/A	Rabbit	H	IF/ICC, WB
<b>Caspase-7</b>	IMG-80272	Ascites	7CSP01	Mouse	H	IHC-P
<b>Caspase-7 (Active/Cleaved)</b>	IMG-5702	Sera	N/A	Rabbit	Multiple	IHC-Fr, IHC-P, IP, WB
<b>Caspase-7 (CT)</b>	IMG-5560	PAP	N/A	Rabbit	H, M, R	IHC-P, WB
<b>Caspase-7 (Pro/Active)</b>	IMG-277	Purified	25B881.1	Mouse	H, M, R	IHC-P, WB
<b>Caspase-8</b>	IMG-5704	Sera	N/A	Rabbit	Multiple	IHC-Fr, IHC-P, IP, WB
<b>Caspase-8</b>	IMG-80433	Purified	N/A	Rabbit	Multiple	IHC-P
<b>Caspase-8 (Active/Cleaved)</b>	IMG-5703	Sera	N/A	Rabbit	Multiple	IHC-Fr, IHC-P, IP, WB
<b>Caspase-8 (Pro/Active)</b>	IMG-274A	Purified	90A992	Mouse	Multiple	Flow-Intra, IHC-P, WB
	IMG-274B	Biotin	90A992	Mouse	Multiple	ELISA
<b>Caspase-9</b>	IMG-5706	Sera	N/A	Rabbit	Multiple	IHC-Fr, IHC-P, IP, WB
<b>Caspase-9</b>	IMG-5707	Sera	N/A	Rabbit	H, R	IHC-Fr, IHC-P, IP, WB
<b>Caspase-9</b>	IMG-5708	Sera	N/A	Rabbit	H	IHC-Fr, IHC-P, IP, WB
<b>Caspase-9</b>	IMG-5709	Sera	N/A	Rabbit	H	IHC-Fr, IHC-P, IP, WB
<b>Caspase-9</b>	IMG-80434	Purified	N/A	Rabbit	H	IHC-P

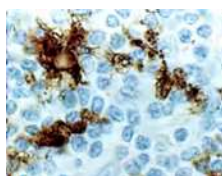
### Caspase-3 (Active/Cleaved) (IMG-5700)



Analysis of formalin-fixed paraffin-embedded dog ischemic brain tissue using an Active/Cleaved Caspase-3 pAb (IMG-5700).

Description	Cat No	Format	Clone	Host	Species	Application
<b>Caspase-9 (Active/Cleaved)</b>	IMG-5705	Sera	N/A	Rabbit	Multiple	IHC-Fr, IHC-P, Immuno-EM, IP, WB
<b>Caspase-9 (CTD)</b>	IMG-437	Sera	N/A	Rabbit	H, M, R	WB
<b>Caspase-10</b>	IMG-4150	Purified	N/A	Rabbit	Multiple	WB
<b>Caspase-10</b>	IMG-5710	Sera	N/A	Rabbit	Multiple	IHC-Fr, IHC-P, IP, WB
<b>Caspase-10</b>	IMG-5711	Sera	N/A	Rabbit	H	IHC-Fr, IHC-P, IP, WB
<b>Caspase-10</b>	IMG-5712	Sera	N/A	Rabbit	H	IHC-Fr, IHC-P, IP, WB
<b>Caspase-12</b>	IMG-300	Purified	N/A	Rabbit	M, R	WB
<b>Caspase-12</b>	IMG-5555	PAP	N/A	Rabbit	M, R	IHC-P, WB
<b>Caspase-12</b>	IMG-6463A	PAP	N/A	Rabbit	M	WB
<b>Caspase-12</b>	IMG-6470A	Purified	N/A	Rabbit	H	WB
<b>Caspase-14</b>	IMG-167	Purified	70A1426	Mouse	H, M	Flow-Intra, WB
<b>Caspase-14</b>	IMG-5713	Sera	N/A	Rabbit	Multiple	IHC-Fr, IHC-P, IP, WB
<b>Caveolin-2</b>	IMG-5015	PAP	N/A	Rabbit	H	WB
<b>Caveolin-2 (Ser23)</b>	IMG-5013	PAP	N/A	Rabbit	H	WB
<b>Caveolin-2 (Ser36)</b>	IMG-5014	PAP	N/A	Rabbit	H	WB
<b>CCR5 (NT)</b>	IMG-5600	Purified	N/A	Rabbit	H	IHC-P, WB
<b>CD28</b>	IMG-4038	Purified	N/A	Rabbit	H	WB
<b>CD40</b>	IMG-5714	Sera	N/A	Rabbit	Multiple	IHC-Fr, IHC-P, IP, WB
<b>CD72</b>	IMG-4076	Purified	N/A	Rabbit	H	WB
<b>CD72</b>	IMG-4077	Purified	N/A	Rabbit	H	WB
<b>CD100/SEMA-4D</b>	IMG-4078	Purified	N/A	Rabbit	H	WB
<b>CD100/SEMA-4D</b>	IMG-4079	Purified	N/A	Rabbit	H	WB
<b>CDC2 (Ab-15)</b>	IMG-90538-2	PAP	N/A	Rabbit	H, M, R	IHC-P, WB
<b>CDC2 (Thr161)</b>	IMG-90233-1	PAP	N/A	Rabbit	H, M, R	IHC-P, WB
<b>CDC2 (Tyr15)</b>	IMG-90308-1	PAP	N/A	Rabbit	H, M, R	WB
<b>CDC4 (69 kDa isoform)</b>	IMG-4118	Purified	N/A	Rabbit	H	WB
<b>CDK2 (Ab-160)</b>	IMG-90444-2	PAP	N/A	Rabbit	H, M, R	WB
<b>CDK2 (Thr160)</b>	IMG-90232-1	PAP	N/A	Rabbit	H, M, R	IHC-P, WB
<b>Chk2 (NT)</b>	IMG-5443	PAP	N/A	Rabbit	H, M, R	WB
<b>ciAP1</b>	IMG-438	Purified	N/A	Rabbit	H	WB
<b>ciAP1</b>	IMG-5715	Sera	N/A	Rabbit	H	IHC-Fr, IHC-P, IP, WB
<b>ciAP1</b>	IMG-5716	Sera	N/A	Rabbit	Multiple	IHC-Fr, IHC-P, IP, WB
<b>ciAP1</b>	IMG-5717	Sera	N/A	Rabbit	H	IHC-Fr, IHC-P, IP, WB
<b>ciAP1 and ciAP2</b>	IMG-5444	PAP	N/A	Rabbit	H, M	IHC-P, WB
<b>ciAP2</b>	IMG-5718	Sera	N/A	Rabbit	H	IHC-Fr, IHC-P, IP, WB
<b>ciAP2</b>	IMG-5719	Sera	N/A	Rabbit	H	IHC-Fr, IHC-P, IP, WB
<b>CIDE-3</b>	IMG-4158	Purified	N/A	Rabbit	H	WB
<b>CIDE-A (CT)</b>	IMG-5445	PAP	N/A	Rabbit	M	WB
<b>Cre</b>	IMG-5720	Sera	N/A	Rabbit	Cre/lox Sys.	IHC-Fr, IHC-P, IP, WB
<b>Cre</b>	IMG-5721	Sera	N/A	Rabbit	Cre/lox Sys.	IHC-Fr, IHC-P, IP, WB
<b>Cre</b>	IMG-5722	Sera	N/A	Rabbit	Cre/lox Sys.	IHC-Fr, IHC-P, IP, WB
<b>CRTR-1</b>	IMG-4094	Purified	N/A	Rabbit	H, M, R	WB
<b>Cyclin E1</b>	IMG-4020	Purified	N/A	Rabbit	H	WB
<b>Cyclin E2</b>	IMG-4019	Purified	N/A	Rabbit	H	WB
<b>Cytochrome C</b>	IMG-101A	Purified	7H8.2C12	Mouse	Multiple	IF/ICC, WB
	IMG-101B	Biotin	7H8.2C12	Mouse	Multiple	ELISA, WB

**CD40**  
(IMG-5714)

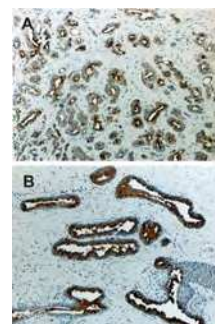


Immunohistochemical analysis of CD40 expression in formalin-fixed, paraffin-embedded human tonsil using IMG-5714 at 1:2000.



Description	Cat No	Format	Clone	Host	Species	Application
<b>Cytochrome C</b>	IMG-102A	Purified	6H2.B4	Mouse	H, M, R	FA-Neut, IHC-Fr, IP
<b>Cytochrome P450 (CYP1B1)</b>	IMG-5988A	Purified		Rabbit	H	IHC-P, WB
<b>Cytochrome P450 (CYP1B1)</b>	IMG-6063A	PAP	N/A	Rabbit	Multiple	IHC-P, WB
<b>D4-GDI</b>	IMG-396B	Biotin	10D774	Mouse	Multiple	ELISA
	IMG-396A	Purified	10D774	Mouse	Multiple	Flow-Intra, WB
<b>D4-GDI (cleavage specific)</b>	IMG-160A	Purified	97A1015	Mouse	H, M	Flow-Intra, IHC-P, IP, WB
	IMG-160C	FITC	97A1015	Mouse	H, M	Flow-Intra
<b>DAD1</b>	IMG-5615	Purified	N/A	Rabbit	H, M	WB
<b>DAP3</b>	IMG-295	Purified	N/A	Rabbit	H, M, R	WB
<b>DAP3</b>	IMG-314	Purified	42C617.1.2	Mouse	M, H	WB
<b>DAP3</b>	IMG-3492	PAP	N/A	Goat	H	WB
<b>DAP5</b>	IMG-302	Purified	39C534.1	Mouse	M, H	WB
<b>DAPK2</b>	IMG-353	Purified	N/A	Rabbit	H, M, R	WB
<b>DAPK2</b>	IMG-5562	PAP	N/A	Rabbit	H, M, R	IHC-P, WB
<b>DAXX</b>	IMG-112	Purified	N/A	Rabbit	H	WB
<b>DAXX</b>	IMG-5723	Sera	N/A	Rabbit	Multiple	IHC-Fr, IHC-P, IP, WB
<b>DcR1 (ED2)</b>	IMG-5465	PAP	N/A	Rabbit	H, M, R	WB
<b>DcR3/TR6 (NT)</b>	IMG-5616	Purified	N/A	Rabbit	H, M, R	WB
<b>DC-SIGN (CT)</b>	IMG-5563	PAP	N/A	Rabbit	H	IHC-P, WB
<b>DC-SIGN (ED)</b>	IMG-5564	PAP	N/A	Rabbit	H	IHC-P, WB
<b>DcTRAILR1/2</b>	IMG-572	Purified	N/A	Rabbit	M	WB
<b>DEDAF</b>	IMG-5466	PAP	N/A	Rabbit	H, M, R	WB
<b>DEDD2/Flame-3</b>	IMG-4138	Purified	N/A	Rabbit	H, M	WB
<b>DEDD2/Flame-3</b>	IMG-5724	Sera	N/A	Rabbit	Multiple	IHC-Fr, IHC-P, IP, WB
<b>DEDD2/Flame-3</b>	IMG-5725	Sera	N/A	Rabbit	H	IHC-Fr, IHC-P, IP, WB
<b>DENTT</b>	IMG-4124	Purified	N/A	Rabbit	H	WB
<b>DFF-40/CAD/CPAN</b>	IMG-117	Purified	N/A	Rabbit	Guinea Pig, M	IHC-P, WB
<b>DFF-40/CAD/CPAN</b>	IMG-149	Purified	36A349	Mouse	H	WB
<b>DFF-40/CAD/CPAN (I18)</b>	IMG-5467	PAP	N/A	Rabbit	H, M, R	WB
<b>DFF-45/ICAD</b>	IMG-5569	PAP	N/A	Rabbit	M	IHC-P, WB
<b>DNase II</b>	IMG-172	Purified	N/A	Rabbit	H	WB
<b>DPP10</b>	IMG-4181	Purified	N/A	Rabbit	Multiple	WB
<b>DR4/TRAILR1 (NT)</b>	IMG-275	Purified	32A242	Mouse	H	WB
<b>DR5/TRAILR2</b>	IMG-5470	PAP	N/A	Rabbit	H, M	IF/ICC, WB
<b>DRAK2 (CT)</b>	IMG-5617	Purified	N/A	Rabbit	H	WB
<b>DRAM</b>	IMG-5911A	Purified	N/A	Rabbit	Multiple	IHC-P, WB
<b>EBAG9</b>	IMG-30100	PAP	N/A	Goat	H	WB
<b>eIF5A2</b>	IMG-4101	Purified	N/A	Rabbit	H	WB
<b>ELMO1</b>	IMX-6145	Sera	N/A	Rabbit	Multiple	ELISA
<b>EndoG</b>	IMG-5565	PAP	N/A	Rabbit	H, M, R	IHC-P, WB
<b>EndoPDI/TXNDC5</b>	IMG-3363	PAP	N/A	Goat	H	WB
<b>Eotaxin (CT)</b>	IMG-5594	Purified	N/A	Rabbit	H	WB
<b>ESDN</b>	IMG-4131	Purified	N/A	Rabbit	M, H, R	WB
<b>ESE-1</b>	IMG-4095	Purified	N/A	Rabbit	H	WB
<b>ETR-3</b>	IMG-4027	Purified	N/A	Rabbit	M, H	WB
<b>F1Aa (CT)</b>	IMG-5471	PAP	N/A	Rabbit	H, M, R	WB

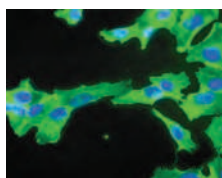
#### DAXX (IMG-5723)



Formalin-fixed paraffin-embedded tissue sections of human prostate cancer (A and B) stained for Daxx expression using IMG-5723 at 1:2000. Hematoxylin-eosin counterstain.

Description	Cat No	Format	Clone	Host	Species	Application
FAP-1	IMG-5726	Sera	N/A	Rabbit	H	IF/ICC, IHC-Fr, IHC-P, IP, WB
FAP-1	IMG-5727	Sera	N/A	Rabbit	H	IHC-Fr, IHC-P, IP, WB
Fas (CD95)	IMG-80403	Purified	N/A	Rabbit	H	IHC-P
FBG2	IMG-4164	Purified	N/A	Rabbit	H	WB
FBG3	IMG-4165	Purified	N/A	Rabbit	H	WB
FBG4	IMG-4166	Purified	N/A	Rabbit	M, H, R	WB
FBG5	IMG-4167	Purified	N/A	Rabbit	H	WB
Fis1	IMG-5113A	Sera	N/A	Rabbit	H	IHC-P, WB
FKHR (Ab-319)	IMG-90482-2	PAP	N/A	Rabbit	H, M, R	IHC-P, WB
FKHR (Ser256)	IMG-90216-1	PAP	N/A	Rabbit	H, M, R	IHC-P, WB
FKHR (Ser319)	IMG-90234-1	PAP	N/A	Rabbit	H, M, R	IHC-P, WB
FKHRL1 (Ab-253)	IMG-90489-2	PAP	N/A	Rabbit	H, M, R	IHC-P, WB
FKHRL1 (Ser253)	IMG-90250-1	PAP	N/A	Rabbit	H, M, R	IHC-P, WB
FKLF	IMG-4033	Purified	N/A	Rabbit	H	WB
FLASH	IMG-4049	Purified	N/A	Rabbit	M	WB
FLASH	IMG-4050	Purified	N/A	Rabbit	M	WB
FLASH	IMG-449	Purified	N/A	Rabbit	H	IF/ICC, WB
FLIP	IMG-116	Purified	N/A	Rabbit	H, M	WB
FLIP (CT)	IMG-5595	Purified	N/A	Rabbit	H, M, R	WB
FLIP (long and short)	IMG-5728	Sera	N/A	Rabbit	H	IHC-Fr, IHC-P, IP, WB
FLIP $\gamma/\delta$ (CT)	IMG-5566	PAP	N/A	Rabbit	H	IF/ICC, WB
FOXO1A (S256)	IMG-6384A	PAP	N/A	Rabbit	Multiple	WB
Frizzled-7 (FZD7)	IMG-4034	Purified	N/A	Rabbit	M	WB
GAPDH - Loading Control	IMG-3073	PAP	N/A	Goat	Multiple	ELISA, IHC-P, WB
GAPDH - Loading Control	IMG-5019A	T.C. Sup.	GAPDH 1D4	Mouse	Multiple	IF/ICC, IP, WB
GAPDH - Loading Control	IMG-5143A	Purified	N/A	Rabbit	Multiple	WB
GAPDH (Internal)	IMG-3970	PAP	N/A	Goat	Multiple	ELISA, WB
GbL	IMG-5568	PAP	N/A	Rabbit	H, M, R	IHC-P, WB
Grim-19	IMG-439A	Sera		Rabbit	H	WB
Grim-19	IMG-4133	Purified	N/A	Rabbit	H	WB
GSK3 $\alpha$ (Ab-21)	IMG-90364-2	PAP	N/A	Rabbit	H, M, R	IHC-P, WB
GSK3 $\alpha$ (Ser21)	IMG-90124-1	PAP	N/A	Rabbit	H, M, R	IHC-P, WB
GSK3 $\beta$ (Ser9)	IMG-90119-1	PAP	N/A	Rabbit	H, M, R	IHC-P, WB
GPR44 (CRTH2)	IMG-4069	Purified	N/A	Rabbit	M, R	WB
HDAC-10	IMG-4145	Purified	N/A	Rabbit	H	WB
HSP27 (Ab-15)	IMG-90472-2	PAP	N/A	Rabbit	H, M, R	IHC-P, WB
HSP27 (Ab-78)	IMG-90541-2	PAP	N/A	Rabbit	H	IHC-P, WB
HSP27 (Ab-82)	IMG-90542-2	PAP	N/A	Rabbit	H	IHC-P, WB
HSP27 (Ser15)	IMG-90257-1	PAP	N/A	Rabbit	H, M, R	IHC-P, WB
HSP27 (Ser78)	IMG-90311-1	PAP	N/A	Rabbit	H	IHC-P, WB
HSP27 (Ser82)	IMG-90312-1	PAP	N/A	Rabbit	H	IHC-P, WB
Hsp90b (Ab-254)	IMG-90578-2	PAP	N/A	Rabbit	H, M, R	IHC-P, WB
HtrA1	IMG-6518A	Sera	N/A	Rabbit	Multiple	IF/ICC, WB
HtrA2/Omi	IMG-404A	Purified	196C429	Mouse	H	IHC-P, WB
HtrA2/Omi	IMG-404B	Biotin	196C429	Mouse	H	ELISA
HtrA2/Omi (C2)	IMG-5622	Purified	N/A	Rabbit	H	WB

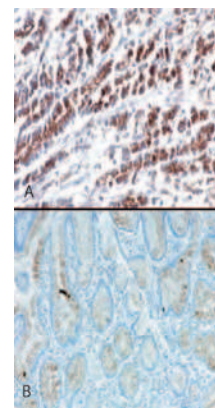
GAPDH - Loading Control (IMG-5019A)



Application of the GAPDH antibody to visualize cells by fluorescence microscopy. Sh-SY5Y human neuroblastoma cells were stained using IMG-5019A, followed by a FITC labeled second step antibody (green) and counterstained with Hoechst dye (blue).

Description	Cat No	Format	Clone	Host	Species	Application
HtrA3	IMG-5105A	Purified	N/A	Rabbit	M, H, R	WB
I-FLICE	IMG-104A	Purified	N/A	Rabbit	H	WB
IKAP	IMG-4046	Purified	N/A	Rabbit	H	WB
IKAP	IMG-4047	Purified	N/A	Rabbit	H	WB
IkB- $\epsilon$ (Ab-22)	IMG-90579-2	PAP	N/A	Rabbit	H, M	IHC-P, WB
IkB- $\epsilon$ (Ser22)	IMG-90284-1	PAP	N/A	Rabbit	H, M	IHC-P, WB
IKK $\beta$ /IKK2(C3)	IMG-5570	PAP	N/A	Rabbit	H	IF/ICC, WB
IKK $\epsilon$ /IKKi (CT)	IMG-5571	PAP	N/A	Rabbit	H	IHC-P, WB
IKK $\gamma$ /IKK3/NEMO	IMG-287A	Purified	46B844	Mouse	H	Flow-Intra, WB
IKK $\gamma$ /IKK3/NEMO	IMG-324A	Purified	72C627	Mouse	H, M	WB
IKK $\gamma$ /IKK3/NEMO	IMG-324B	Biotin	72C627	Mouse	H, M	ELISA
IKK $\gamma$ /IKK3/NEMO	IMG-4044	Purified	N/A	Rabbit	H	WB
IKK $\gamma$ /IKK3/NEMO	IMG-4045	Purified	N/A	Rabbit	H	WB
IKK $\gamma$ /IKK3/NEMO	IMG-5480	PAP	N/A	Rabbit	H, M, R	WB
IL-18BP	IMG-4015	Purified	N/A	Rabbit	H	WB
IL-21 (IN)	IMG-5572	PAP	N/A	Rabbit	H	IF/ICC, WB
IL-22R (NT)	IMG-5573	PAP	N/A	Rabbit	H, R	IF/ICC, WB
ILP-1	IMG-4135	Purified	N/A	Rabbit	H	WB
Ipaf/Clan/CARD12	IMG-4126	Purified	N/A	Rabbit	H	WB
Ipaf/Clan/CARD12	IMG-5574	PAP	N/A	Rabbit	H	IF/ICC, WB
Ipaf/Clan/CARD12	IMG-5729	Sera	N/A	Rabbit	H, M	IHC-Fr, IHC-P, IP, WB
Ipaf/Clan/CARD12	IMG-5730	Sera	N/A	Rabbit	H	IHC-Fr, IHC-P, IP, WB
IRAK-2 (C2)	IMG-5575	PAP	N/A	Rabbit	H	IF/ICC, WB
IRAK-M	IMG-5576	PAP	N/A	Rabbit	H, M, R	IHC-P, WB
IRF3 (CT)	IMG-5577	PAP	N/A	Rabbit	H, M	IHC-P, WB
IRTA1	IMG-4106	Purified	N/A	Rabbit	H	WB
IRTA2	IMG-4116	Purified	N/A	Rabbit	H	WB
JAK1 (Tyr1022)	IMG-90244-1	PAP	N/A	Rabbit	H, M, R	IHC-P, WB
JAK2 (Ab-221)	IMG-90452-2	PAP	N/A	Rabbit	H, M, R	IHC-P
JAK2 (Tyr1007)	IMG-90246-1	PAP	N/A	Rabbit	H, M, R	IHC-P
KLK4 (Kallikrein 4)	IMG-4112	Purified	N/A	Rabbit	H	WB
KLK5 (Kallikrein 5/KLK-L2)	IMG-4111	Purified	N/A	Rabbit	H	WB
KLK9 (Kallikrein 9/KLK-L3)	IMG-4109	Purified	N/A	Rabbit	H	WB
KLK11 (Kallikrein 11)	IMG-4155	Purified	N/A	Rabbit	H	WB
KLK12 (Kallikrein 12)	IMG-4110	Purified	N/A	Rabbit	H	WB
KLK14 (Kallikrein 14)	IMG-4113	Purified	N/A	Rabbit	H	WB
KLK15 (Kallikrein 15)	IMG-4085	Purified	N/A	Rabbit	H	WB
KLK15 (Kallikrein 15)	IMG-4086	Purified	N/A	Rabbit	H	WB
KLK3 (Kallikrein 3/PSA)	IMG-4108	Purified	N/A	Rabbit	H	WB
KLKL1 (Kallikrein L1)	IMG-4107	Purified	N/A	Rabbit	H	WB
Kos1	IMG-4161	Purified	N/A	Rabbit	M	WB
Lifeguard/Faim2	IMG-5897A	Purified	N/A	Rabbit	Multiple	IHC-P, WB
Livin/BIRC7/KIAP	IMG-3366	PAP	N/A	Goat	H	WB
Livin/BIRC7/KIAP	IMG-347A	Purified	88C570	Mouse	H	IF/ICC, WB
Livin/BIRC7/KIAP	IMG-4082	Purified	N/A	Rabbit	H	WB
Livin/BIRC7/KIAP	IMG-5732	Sera	N/A	Rabbit	H, M, R	IHC-Fr, IHC-P, IP, WB

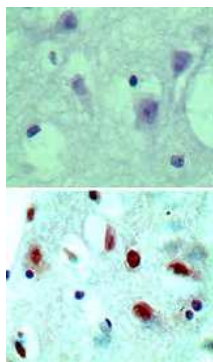
HtrA2/Omi (C2)  
(IMG-404A)



IHC testing using IMG-404A shows cytoplasmic staining in stomach tumor tissue (A) and very weak staining in normal stomach tissue (B).

Description	Cat No	Format	Clone	Host	Species	Application
MADD (CT)	IMG-5596	Purified	N/A	Rabbit	H, M, R	WB
MALT1/Paracaspase	IMG-5110A	Purified	N/A	Rabbit	H	WB
MALT1/Paracaspase	IMG-5745	Sera	N/A	Rabbit	H	IHC-Fr, IHC-P, IP, WB
MAP-1	IMG-4132	Purified	N/A	Rabbit	H	WB
MAP-1 (IN)	IMG-5494	PAP	N/A	Rabbit	H, M	WB
MAP126	IMG-4130	Purified	N/A	Rabbit	H	WB
Mcl-1	IMG-5733	Sera	N/A	Rabbit	H	IHC-Fr, IHC-P, IP, WB
Mcl-1	IMG-80455	Purified	N/A	Rabbit	H	IHC-P, WB
Mcl-1 (CT)	IMG-5644	Purified	N/A	Rabbit	H, M, R	IF/ICC, WB
Mcl-1 (IN)	IMG-5619	Purified	N/A	Rabbit	H	WB
Mcl-1 (Isoform 1)	IMG-3127	PAP	N/A	Goat	H	WB
Mcl-1 (NT)	IMG-5620	Purified	N/A	Rabbit	H	WB
MCT1	IMG-4021	Purified	N/A	Rabbit	M	WB
MEKK6	IMX-5069	Purified	N/A	Rabbit	H	ELISA
MMP9/Gelatinase B	IMG-4071	Purified	N/A	Rabbit	H	WB
MMP9/Gelatinase B	IMG-4072	Purified	N/A	Rabbit	H	WB
Monopolin	IMG-4093	Purified	N/A	Rabbit	<i>S. cerevisiae</i>	WB
MST1/KRS2/STK4	IMG-575	Purified	N/A	Rabbit	H	WB
MTBP (IN2)	IMG-5498	PAP	N/A	Rabbit	H	WB
MUC12	IMG-4057	Purified	N/A	Rabbit	H	WB
MUC12	IMG-4058	Purified	N/A	Rabbit	H	WB
Myc (Ab-358)	IMG-90386-2	PAP	N/A	Rabbit	H, M, R	IHC-P, WB
Myc (Ab-373)	IMG-90387-2	PAP	N/A	Rabbit	H, M, R	WB
Myc (Ser373)	IMG-90152-1	PAP	N/A	Rabbit	H, M, R	IHC-P
Myc (Thr358)	IMG-90151-1	PAP	N/A	Rabbit	H, M, R	IHC-P, WB
Myc (Thr58)	IMG-90150-1	PAP	N/A	Rabbit	H, M, R	IHC-P, WB
MyD88 (IN)	IMG-5579	PAP	N/A	Rabbit	H	IHC-P, WB
NADE	IMG-5621	Purified	N/A	Rabbit	H, M	WB
NAIP (CT)	IMG-5500	PAP	N/A	Rabbit	H	WB
Nak-1/Nur77	IMG-528	Purified	N/A	Rabbit	H, M	IF/ICC, WB
Nak-1/Nur77	IMG-72010	PAP	N/A	Rabbit	H	IHC-P
NALP1	IMX-6337	Sera	N/A	Rabbit	Chimp, H	ELISA
NALP1	IMX-6338	Sera	N/A	Rabbit	Chimp, H, Mk	ELISA
NALP1/NAC/CARD7	IMG-5734	Sera	N/A	Rabbit	H	IHC-Fr, IHC-P, IP, WB
NALP1/NAC/CARD7	IMG-5735	Sera	N/A	Rabbit	H	IHC-Fr, IHC-P, IP, WB
NALP2	IMG-6326A	PAP	N/A	Rabbit	H	IHC-P, WB
NALP2	IMG-6370A	Purified	N/A	Rabbit	H	IHC-P
NALP2/PAN1/PYPAF2	IMG-5741	Sera	N/A	Rabbit	H	IHC-Fr, IHC-P, IP, WB
NALP2/PAN1/PYPAF2	IMG-5742	Sera	N/A	Rabbit	H	IHC-Fr, IHC-P, IP, WB
NALP3	IMX-6408	Sera	N/A	Rabbit	H, R, Mk	ELISA
NALP4	IMX-6407	Sera	N/A	Rabbit	Multiple	ELISA
NALP4/PAN2/PYPAF4	IMG-5743	Sera	N/A	Rabbit	H, M	IHC-Fr, IHC-P, IP, WB
NALP5	IMX-6336	Sera	N/A	Rabbit	H	ELISA
NALP6	IMX-6339	Sera	N/A	Rabbit	Multiple	ELISA
NALP7	IMG-6357A	PAP	N/A	Rabbit	H, R, Mk	WB
NALP8	IMX-6340	Sera	N/A	Rabbit	Chimp, H	ELISA

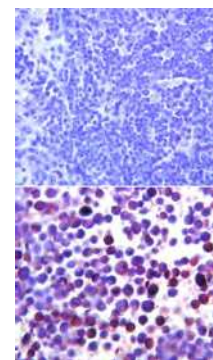
NALP2 (IMG-6326A)



Immunohistochemical analysis of NALP2 in formalin-fixed, paraffin-embedded human brain tissue using an isotype control (top) and IMG-6326A (bottom) at 5 ug/ml.

Description	Cat No	Format	Clone	Host	Species	Application
NALP8	IMX-6341	Sera	N/A	Rabbit	Chimp, H	ELISA
NALP9	IMG-6375A	Purified	N/A	Rabbit	H	WB
NALP9	IMX-6343	Sera	N/A	Rabbit	H	ELISA
NALP10	IMG-6366A	Purified	N/A	Rabbit	H	WB
NALP10	IMX-6411	Sera	N/A	Rabbit	H	ELISA
NALP11	IMG-6443A	Purified	N/A	Rabbit	H	IHC-P
NALP11	IMX-6344	Sera	N/A	Rabbit	Chimp, H	ELISA
NALP12/PYPAF7/Monarch-1	IMG-5744	Sera	N/A	Rabbit	H	IHC-Fr, IHC-P, IP, WB
NALP12/PYPAF7/Monarch-1	IMX-6434	Sera	N/A	Rabbit	H	ELISA
NALP12/PYPAF7/Monarch-1	IMX-6434	Sera	N/A	Rabbit	H	ELISA
NDRG1	IMG-3170	PAP	N/A	Goat	H	ELISA, WB
NDRG1	IMG-6041A	Sera	N/A	Rabbit	H	WB
NEI3	IMG-4152	Purified	N/A	Rabbit	H	WB
NFATc1	IMG-4073	Purified	N/A	Rabbit	H	WB
NFATc1	IMG-4074	Purified	N/A	Rabbit	H	WB
NFATc2	IMG-4075	Purified	N/A	Rabbit	H	WB
NF- $\kappa$ B p65-NLS	IMG-6066A	PAP	N/A	Rabbit	Multiple	IF/ICC, WB
NIDD	IMG-5736	Sera	N/A	Rabbit	H	WB, IHC-P, IHC-Fr, IP
NIP3	IMG-5737	Sera	N/A	Rabbit	Multiple	IHC-Fr, IHC-P, IP, WB
NKIAMRE	IMG-4055	Purified	N/A	Rabbit	H	WB
NKIAMRE	IMG-4056	Purified	N/A	Rabbit	H	WB
NOD1/CARD4	IMG-5739	Sera	N/A	Rabbit	H	IHC-Fr, IHC-P, IP, WB
NOD2/CARD15	IMG-5738	Sera	N/A	Rabbit	H	IHC-Fr, IHC-P, IP, WB
NORE1	IMG-4159	Purified	N/A	Rabbit	H, M, R	WB
Noxa	IMG-349A	Purified	114C307.1	Mouse	H, M	IF/ICC, IHC-P, WB
Noxa	IMG-349B	Biotin	114C307.1	Mouse	H	ELISA
Noxa	IMG-451	Purified	N/A	Rabbit	H, M, R	IHC-P, WB
Nudel	IMG-5580	PAP	N/A	Rabbit	H, M	IF/ICC, WB
p35 baculovirus	IMG-5740	Sera	N/A	Rabbit	Multi	IHC-Fr, IHC-P, IP, WB
p44/42 MAP Kinase (Ab-202)	IMG-90539-2	PAP	N/A	Rabbit	H, M, R	WB
p44/42 MAP Kinase (Ab-204)	IMG-90540-2	PAP	N/A	Rabbit	H, M, R	WB
p44/42 MAP Kinase (Thr202)	IMG-90309-1	PAP	N/A	Rabbit	H, M, R	IHC-P, WB
p44/42 MAP Kinase (Tyr204)	IMG-90310-1	PAP	N/A	Rabbit	H, M, R	IHC-P, WB
p53	IMG-583	Sera	N/A	Rabbit	H, M, R	ChIP, Gel Shift, IP, WB
p53	IMG-80061	Purified	DO7	Mouse	H	IHC-P, IP, WB
p53	IMG-80347	T.C. Sup.	SP5	Rabbit	H	IHC-P
p53	IMG-80442	Purified	N/A	Rabbit	H, M, R	IHC-P
p53 (Ab-315)	IMG-90428-2	PAP	N/A	Rabbit	H	WB
p53 (Ab-46)	IMG-90427-2	PAP	N/A	Rabbit	H	WB
p53 (Ser315)	IMG-90205-1	PAP	N/A	Rabbit	H	IHC-P, WB
p53 (Ser392)	IMG-680	PAP	N/A	Rabbit	H, Mk, M	WB
p53 (Ser46)	IMG-90204-1	PAP	N/A	Rabbit	H	WB
p53DINP1	IMG-473	Sera	N/A	Rabbit	H, M, R	WB
p53DINP1	IMG-5581	PAP	N/A	Rabbit	H, M, R	IHC-P, WB
p53R2 (NT)	IMG-5504	PAP	N/A	Rabbit	H, M, R	WB
p70 S6 Kinase (Ab-389)	IMG-90497-2	PAP	N/A	Rabbit	H, M, R	WB

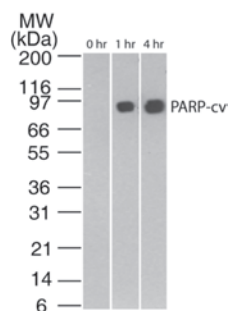
**NOXA**  
(IMG-349A)



Immunohistochemical analysis of Noxa in formalin-fixed, paraffin-embedded mouse spleen tissue using an isotype control (top) and IMG-349A (bottom) at 5 ug/ml.

Description	Cat No	Format	Clone	Host	Species	Application
<b>p70 S6 Kinase (Ab-411)</b>	IMG-90558-2	PAP	N/A	Rabbit	H, M, R	IHC-P, WB
<b>p70 S6 Kinase (Ab-421)</b>	IMG-90545-2	PAP	N/A	Rabbit	H, M, R	IHC-P, WB
<b>p70 S6 Kinase (Ab-424)</b>	IMG-90568-2	PAP	N/A	Rabbit	H, M, R	IHC-P, WB
<b>p70 S6 Kinase (Ser411)</b>	IMG-90326-1	PAP	N/A	Rabbit	H, M, R	IHC-P, WB
<b>p70 S6 Kinase (Ser424)</b>	IMG-90334-1	PAP	N/A	Rabbit	H, M, R	IHC-P, WB
<b>p70 S6 Kinase (Thr421)</b>	IMG-90317-1	PAP	N/A	Rabbit	H, M, R	IHC-P, WB
<b>p73</b>	IMG-246	Purified	5B429	Mouse	H, M	ChIP, IF/ICC, IHC-Fr, IP, WB
<b>p73</b>	IMG-260	Purified	5B789	Mouse	H	WB
<b>p73</b>	IMG-5356A	PAP	N/A	Rabbit	H	WB
<b>p73 (α, β, γ, Δ Isoforms)</b>	IMG-259A	Purified	5B1288	Mouse	H, M	ChIP, IF/ICC, IP, WB
<b>p73 (deltaNp73)</b>	IMG-313A	Purified	38C674.2	Mouse	H, M, R	ChIP, IHC-Fr, IHC-P, WB
<b>p73 (Tyr99)</b>	IMG-5355A	PAP	NA	Rabbit	H	WB
<b>p8 (com1)</b>	IMG-4059	Purified	N/A	Rabbit	H	WB
<b>p8 (com1)</b>	IMG-4060	Purified	N/A	Rabbit	H	WB
<b>p90RSK (Thr348)</b>	IMG-90208-1	PAP	N/A	Rabbit	H, M, R	IHC-P, WB
<b>PAK1 (Ab-212)</b>	IMG-90481-2	PAP	N/A	Rabbit	H, M, R	IHC-P, WB
<b>PAK1(Thr212)</b>	IMG-90249-1	PAP	N/A	Rabbit	H, M, R	IHC-P, WB
<b>PAK1/2/3 (Ab-423/402/421)</b>	IMG-90488-2	PAP	N/A	Rabbit	H, M, R	IHC-P
<b>PAK1/2/3 (Thr423/402/421)</b>	IMG-90258-1	PAP	N/A	Rabbit	H, M, R	IHC-P
<b>PAPK</b>	IMG-4156	Purified	N/A	Rabbit	M	WB
<b>Par4</b>	IMG-4091	Purified	N/A	Rabbit	H	WB
<b>PARP</b>	IMG-80405	Purified	N/A	Rabbit	H, M, R	IHC-P
<b>PARP (cleavage specific)</b>	IMG-401A	Purified	194C1439	Mouse	H	Flow-Intra, WB
<b>PARP2</b>	IMG-3972	PAP	N/A	Goat	H	ELISA, WB
<b>PARP2</b>	IMG-4137	Sera	N/A	Rabbit	H	WB
<b>PDCD-7</b>	IMG-322	Purified	46C713.2.1	Mouse	M	WB
<b>PERP</b>	IMG-30045	PAP	N/A	Goat	H	ELISA, WB
<b>PERP</b>	IMG-4141	Purified	N/A	Rabbit	H	WB
<b>PERP</b>	IMG-5601	Purified	N/A	Rabbit	H	IF/ICC, WB
<b>PHAP (NT)</b>	IMG-5506	PAP	N/A	Rabbit	H, M, R	WB
<b>PHAP I (IN)</b>	IMG-5508	PAP	N/A	Rabbit	H, M, R	WB
<b>PHAP III</b>	IMG-5509	PAP	N/A	Rabbit	H, M, R	WB
<b>PHAPI2/APRIL (ED2)</b>	IMG-5551	PAP	N/A	Rabbit	H, M	IHC-P, WB
<b>PIKE (CT)</b>	IMG-5624	Purified	N/A	Rabbit	H, M	WB
<b>PIMT</b>	IMG-4119	Purified	N/A	Rabbit	H, M	WB
<b>PIP-1</b>	IMG-4122	Sera	N/A	Rabbit	H	ELISA
<b>PIST/FIG/GOPC (CT)</b>	IMG-5510	PAP	N/A	Rabbit	H, M, R	WB
<b>PIST/FIG/GOPC (IN)</b>	IMG-5511	PAP	N/A	Rabbit	H, M, R	WB
<b>PKCδ (Ser645)</b>	IMG-90341-1	PAP	N/A	Rabbit	H, M, R	IHC-P, WB
<b>PKCδ (Ab-645)</b>	IMG-90576-2	PAP	N/A	Rabbit	H, M, R	IHC-P, WB
<b>PKCθ (Ab-676)</b>	IMG-90577-2	PAP	N/A	Rabbit	H, M, R	IHC-P, WB
<b>PKCθ (Ab-695)</b>	IMG-90499-2	PAP	N/A	Rabbit	H, M, R	IHC-P, WB
<b>PKCθ (Ser695)</b>	IMG-90261-1	PAP	N/A	Rabbit	H, M, R	IHC-P
<b>PKD/PKCμ (Ab-738)</b>	IMG-90456-2	PAP	N/A	Rabbit	H, M, R	WB
<b>PKD/PKCμ (Ab-910)</b>	IMG-90458-2	PAP	N/A	Rabbit	H, M, R	WB
<b>PKD/PKCμ (Ser738)</b>	IMG-90188-1	PAP	N/A	Rabbit	H, M, R	WB

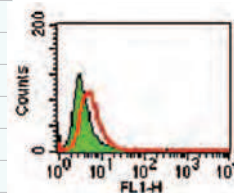
**PARP (cleavage specific) (IMG-401A)**



Western blot analysis of cleaved PARP in staurosporin-treated Jurkat cells at various time points, using IMG-401A at 2 ug/ml. The band corresponding to cleaved PARP is only seen in the treated samples. Imgenex's anti-mouse Ig HRP conjugate (IMGENEX, 20101) was used in this test.

Description	Cat No	Format	Clone	Host	Species	Application
PKD/PKC $\mu$ (Ser910)	IMG-90203-1	PAP	N/A	Rabbit	H, M, R	WB
Porimin	IMG-472	Purified	N/A	Rabbit	H	WB
PRAC	IMG-4123	Purified	N/A	Rabbit	H	WB
Prostein	IMG-4104	Purified	N/A	Rabbit	H	WB
Protein Kinase D2 (PKD2)	IMG-4096	Purified	N/A	Rabbit	H	WB
Protein Kinase N1 (PKN)	IMG-5746	Sera	N/A	Rabbit	Multiple	IHC-Fr, IHC-P, IP, WB
PSDR1	IMG-4105	Purified	N/A	Rabbit	H	WB
PTCH	IMG-30105	PAP	N/A	Goat	H	WB
PTCH1	IMG-4031	Purified	N/A	Rabbit	M	WB
PTCH2	IMG-4032	Purified	N/A	Rabbit	M, H	WB
PTDSR	IMG-6358A	PAP	N/A	Rabbit	Multiple	WB
PTEN (Ab-370)	IMG-90406-2	PAP	N/A	Rabbit	H, M, R	IHC-P, WB
PTEN (Ab-380/382/383)	IMG-90405-2	PAP	N/A	Rabbit	H, M, R	IHC-P, WB
PTEN (Ser370)	IMG-90174-1	PAP	N/A	Rabbit	H, M, R	IHC-P, WB
PTEN (Ser380)	IMG-90126-1	PAP	N/A	Rabbit	H, M, R	IHC-P
PTEN (Ser380/Thr382/383)	IMG-90168-1	PAP	N/A	Rabbit	H, M, R	IHC-P, WB
PUMA	IMG-4136	Purified	N/A	Rabbit	H	WB
PUMA (CT)	IMG-5516	PAP	N/A	Rabbit	H, M	WB
PUMA $\alpha$ (NT)	IMG-458	Purified	N/A	Rabbit	H, M	IHC-P, WB
PUMA $\alpha\beta$ (CT)	IMG-459	Purified	N/A	Rabbit	H, M	IHC-P, WB
PUMA $\alpha\delta\gamma$	IMG-464	Purified	N/A	Rabbit	H, M	WB
Rab24	IMX-6148	Sera	N/A	Rabbit	Chimp, H, Mk	ELISA
RAD9	IMG-164	Purified	93A535	Mouse	H	IF/ICC, IHC-P, IP, WB
RAD17	IMG-4028	Purified	N/A	Rabbit	<i>S. pombe</i>	WB
RAD17	IMG-4029	Purified	N/A	Rabbit	H	WB
RAD17/RAD17 (Ser647)	IMG-5087A	Purified	N/A	Rabbit	M	IF/ICC, WB
RAIDD	IMG-5517	PAP	N/A	Rabbit	H	WB
RANBP17	IMG-4102	Purified	N/A	Rabbit	H, M	WB
RANK/TNF11aR/ODFR	IMG-128A	Purified	9A725	Mouse	H, M	Flow-Intra, IHC-P, WB
	IMG-128D	PE	9A725	Mouse	H, M	Flow-Intra
RANK/TNF11aR/ODFR	IMG-325A	Purified	64C1385.1	Mouse	H, M	, IP, WB
Raptor (CT)	IMG-5582	PAP	N/A	Rabbit	M	IF/ICC, WB
RAR Beta/NR1B2	IMG-71996	PAP	N/A	Rabbit	H	IHC-P
RAR, $\alpha$ -Isotype	IMG-5364	PAP	763	Mouse	H	WB
RAR, $\beta$ -Isotype	IMG-5363	PAP	147	Mouse	H	WB
RAR, $\beta$ -Isotype	IMG-5365	PAP	336	Mouse	H	WB
RFLAT-1	IMG-4014	Purified	N/A	Rabbit	M	WB
RFX-B	IMG-4016	Purified	N/A	Rabbit	H	WB
RGS8	IMG-4125	Purified	N/A	Rabbit	H	WB
RGS19	IMG-6137A	PAP		Rabbit	H, M	IHC-P, WB
RIP	IMG-5747	Sera	N/A	Rabbit	H	IHC-Fr, IHC-P, IP, WB
RIP3	IMG-5523	PAP	N/A	Rabbit	H, M, R	WB
ROCK-1-cleaved	IMG-383A	Purified	154C1465	Mouse	Multiple	WB
ROR Gamma/NR1F3	IMG-6013A	PAP	N/A	Rabbit	Chimp, H	IHC-P, WB
R-Ras	IMG-5748	Sera	N/A	Rabbit	H, M, R	IHC-Fr, IHC-P, IP, WB
RSK (Ab-235)	IMG-90532-2	PAP	N/A	Rabbit	H, M, R	IHC-P, WB

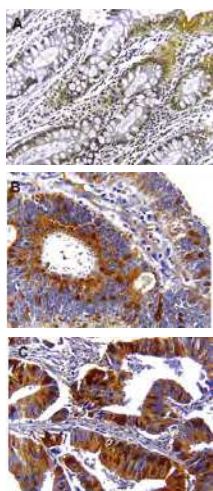
**RANK/TNF11aR/ODFR (IMG-325A)**



Flow cytometry analysis of RANK using IMG-325 at 5 ug/10<sup>6</sup> RAW cells.

Description	Cat No	Format	Clone	Host	Species	Application
<b>RSK (Ser235)</b>	IMG-90301-1	PAP	N/A	Rabbit	H, M, R	WB
<b>Semenogelin I</b>	IMG-5750	Sera	N/A	Rabbit	Multiple	IHC-Fr, IHC-P, IP, WB
<b>Semenogelin II</b>	IMG-5749	Sera	N/A	Rabbit	Multiple	IHC-Fr, IHC-P, IP, WB
<b>SERPINB10</b>	IMG-4144	Purified	N/A	Rabbit	H	WB
<b>SERPINB12</b>	IMG-4142	Sera	N/A	Rabbit	H	WB
<b>SERPINB13</b>	IMG-4143	Purified	N/A	Rabbit	H	WB
<b>SFRP5</b>	IMG-4035	Purified	N/A	Rabbit	H	WB
<b>SHPRH</b>	IMG-4157	Purified	N/A	Rabbit	M	WB
<b>SIGIRR (CT)</b>	IMG-5583	PAP	N/A	Rabbit	H, M	IF/ICC, WB
<b>SIRPa (CT)</b>	IMG-5598	Purified	N/A	Rabbit	H, M, R	WB
<b>Smac/DIABLO</b>	IMG-248A	Purified	N/A	Rabbit	H	Confocal Microscopy, IHC-P, WB
<b>Smac/DIABLO</b>	IMG-4129	Purified	N/A	Rabbit	H	WB
<b>Smac/DIABLO</b>	IMG-5107A	Purified	N/A	Rabbit	H	WB
<b>Smac/DIABLO</b>	IMG-5751	Sera	N/A	Rabbit	H	IHC-Fr, IHC-P, IP, WB
<b>Smac/DIABLO</b>	IMG-5752	Sera	N/A	Rabbit	Multiple	IHC-Fr, IHC-P, IP, WB
<b>Smac/DIABLO</b>	IMG-5753	Sera	N/A	Rabbit	Multiple	IHC-Fr, IHC-P, IP, WB
<b>Smac/DIABLO (CT)</b>	IMG-5578	PAP	N/A	Rabbit	H, M, R	IHC-P, WB
<b>Smac/DIABLO (CT)</b>	IMG-5584	PAP	N/A	Rabbit	H, M, R	IHC-P, WB
<b>SpUlp2</b>	IMG-4024	Purified	N/A	Rabbit	<i>S. pombe</i>	WB
<b>Src (Ab-529)</b>	IMG-90487-2	PAP	N/A	Rabbit	H, M, R	IHC-P, WB
<b>Src (Tyr529)</b>	IMG-90248-1	PAP	N/A	Rabbit	H, M, R	IHC-P, WB
<b>STAT1 (Ab-701)</b>	IMG-90394-2	PAP	N/A	Rabbit	H, M, R	IHC-P, WB
<b>STAT1 (Ab-727)</b>	IMG-90495-2	PAP	N/A	Rabbit	H, M, R	IHC-P, WB
<b>STAT1 (Tyr701)</b>	IMG-90158-1	PAP	N/A	Rabbit	H, M, R	IHC-P, WB
<b>STAT1(Ser727)</b>	IMG-90256-1	PAP	N/A	Rabbit	H, M, R	IHC-P, WB
<b>STAT1<math>\alpha/\beta</math></b>	IMG-280	Purified	N/A	Rabbit	Multiple	WB
<b>STAT2</b>	IMG-291	Purified	N/A	Rabbit	H	WB
<b>STAT3 (Ab-727)</b>	IMG-90396-2	PAP	N/A	Rabbit	H, M, R	IHC-P, WB
<b>STAT3 (Ser727)</b>	IMG-90160-1	PAP	N/A	Rabbit	H, M, R	IHC-P, WB
<b>STAT3 (Tyr705)</b>	IMG-90159-1	PAP	N/A	Rabbit	H, M, R	IHC-P, WB
<b>STAT4</b>	IMG-461	Purified	N/A	Rabbit	M, R	WB
<b>STAT4 (Ab-693)</b>	IMG-90397-2	PAP	N/A	Rabbit	H, M, R	IHC-P, WB
<b>STAT5<math>\beta</math></b>	IMG-292	Purified	N/A	Rabbit	H	WB
<b>STAT6</b>	IMG-462	Purified	N/A	Rabbit	H	WB
<b>STAT6</b>	IMG-6249A	Purified	N/A	Rabbit	H, M, R	IF/ICC, WB
<b>STAT6</b>	IMX-5057	Sera	N/A	Rabbit	H, M, R	ELISA
<b>STAT6 (Tyr641)</b>	IMG-408A	Purified	177C322	Mouse	H, M	IP, WB
<b>Survivin</b>	IMG-4140	Purified	N/A	Rabbit	M, H, R	WB
<b>Survivin</b>	IMG-5754	Sera	N/A	Rabbit	Multiple	IHC-Fr, IHC-P, IP, WB
<b>Survivin</b>	IMG-5755	Sera	N/A	Rabbit	Multiple	IHC-Fr, IHC-P, IP, WB
<b>Survivin</b>	IMG-6082A	Purified	N/A	Rabbit	H	WB
<b>Survivin (CT)</b>	IMG-5497	PAP	N/A	Rabbit	M	WB
<b>Survivin (CT)</b>	IMG-5585	PAP	N/A	Rabbit	H	IF/ICC, WB
<b>TACI</b>	IMG-5586	PAP	N/A	Rabbit	H	IF/ICC, WB
<b>TANK/I-TRAF</b>	IMG-5731	Sera	N/A	Rabbit	H	IHC-Fr, IHC-P, IP, WB
<b>TAZ</b>	IMG-4092	Purified	N/A	Rabbit	H, M, R	WB

**Smac/DIABLO**  
(IMG-5753)

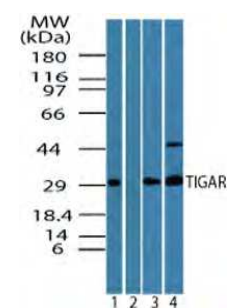


Formalin-fixed, paraffin-embedded normal and cancer human colon sections stained for Smac/DIABLO expression using IMG-5753. Immunostaining in normal (A) colonic epithelium presents only trace immunoreactivity, which is seen in the apical, foveolar cells. In contrast, increased immunoreactivity is observed in cytoplasmic (B) and nuclear (C) locations.



Description	Cat No	Format	Clone	Host	Species	Application
TCCR (NT)	IMG-5531	PAP	N/A	Rabbit	H	WB
TIGAR	IMG-5909A	PAP	N/A	Rabbit	Multiple	WB
TIGAR	IMG-5910A	Purified	N/A	Rabbit	Multiple	WB
TL1A	IMG-5599	Purified	N/A	Rabbit	H, M	WB
TL1A (NT)	IMG-5627	Purified	N/A	Rabbit	H, M, R	WB
TLR3/CD283 (CT)	IMG-5631	Purified	N/A	Rabbit	H, M	WB
TOR	IMG-5587	PAP	N/A	Rabbit	H, M	IF/ICC, WB
TRADD	IMG-5756	Sera	N/A	Rabbit	H	IHC-Fr, IHC-P, IP, WB
TRAF1	IMG-5757	Sera	N/A	Rabbit	H	IHC-Fr, IHC-P, IP, WB
TRAF1	IMG-5758	Sera	N/A	Rabbit	M	IHC-Fr, IHC-P, IP, WB
TRAF2	IMG-5759	Sera	N/A	Rabbit	H, M, R	IHC-Fr, IHC-P, IP, WB
TRAF2	IMG-5760	Sera	N/A	Rabbit	H	IHC-Fr, IHC-P, IP, WB
TRAF2	IMG-5761	Sera	N/A	Rabbit	M	IHC-Fr, IHC-P, IP, WB
TRAF3	IMG-535	Purified	N/A	Rabbit	H, M	WB
TRAF3	IMG-5762	Sera	N/A	Rabbit	H	IHC-Fr, IHC-P, IP, WB
TRAF3	IMG-5763	Sera	N/A	Rabbit	Multiple	IHC-Fr, IHC-P, IP, WB
TRAF3 (CT)	IMG-5532	PAP	N/A	Rabbit	H, M, R	WB
TRAF4	IMG-5764	Sera	N/A	Rabbit	Multiple	IHC-Fr, IHC-P, IP, WB
TRAF5	IMG-5765	Sera	N/A	Rabbit	Multiple	IHC-Fr, IHC-P, IP, WB
TRAF6	IMG-5766	Sera	N/A	Rabbit	Multiple	IHC-Fr, IHC-P, IP, WB
TRAIL Receptor 2	IMG-4146	Sera	N/A	Rabbit	H	WB
TRAIL Receptor 2	IMG-4179	Purified	N/A	Rabbit	H	WB
TRAIL Receptor 3	IMG-4147	Sera	N/A	Rabbit	H	WB
TRAIL Receptor 4	IMG-4148	Purified	N/A	Rabbit	H	WB
TRAIL/Apo-2 Ligand	IMG-110	Purified	N/A	Rabbit	H	WB
TRAIL/Apo-2 Ligand	IMG-256A	Purified	55B709.3	Mouse	H	WB
TRAIL/Apo-2 Ligand	IMG-4053	Purified	N/A	Rabbit	H	WB
TRAIL/Apo-2 Ligand	IMG-4054	Purified	N/A	Rabbit	H	WB
TRAIL/Apo-2 Ligand	IMG-4149	Sera	N/A	Rabbit	H	WB
Transglutaminase II	IMG-80255	Purified	CUB7402	Mouse	Multiple	IHC-P
TRIM5 $\alpha$ (CT)	IMG-5534	PAP	N/A	Rabbit	H	WB
TRIM5 $\alpha$ (IN1)	IMG-5588	PAP	N/A	Rabbit	H	IHC-P, WB
TRIM5 $\delta$	IMG-5536	PAP	N/A	Rabbit	H	WB
TRIM5 $\gamma$	IMG-5537	PAP	N/A	Rabbit	H	WB
TRIP	IMG-5767	Sera	N/A	Rabbit	H	WB, IHC-P, IHC-Fr, IP
TRIP15/COPS2/ALIEN	IMG-4036	Purified	N/A	Rabbit	H, M, R	WB
Trp-p8	IMG-4139	Purified	N/A	Rabbit	H	WB
TSC1 (IN)	IMG-5539	PAP	N/A	Rabbit	H, M, R	WB
TSC2 (NT)	IMG-5541	PAP	N/A	Rabbit	H, M	WB
TSKS	IMG-4127	Purified	N/A	Rabbit	H	WB
TUCAN/CARD8	IMG-5433	PAP	N/A	Rabbit	H	WB
TUCAN/CARD8	IMG-5768	Sera	N/A	Rabbit	H	IHC-Fr, IHC-P, IP, WB
TUCAN/CARD8	IMG-5769	Sera	N/A	Rabbit	H	IHC-Fr, IHC-P, IP, WB
TXNDC/TMX	IMG-3324	PAP	N/A	Goat	H	WB
TYK2 (Ab-1054)	IMG-90450-2	PAP	N/A	Rabbit	H, M, R	IHC-P
UBE2N	IMG-385	Purified	N/A	Rabbit	H	WB, IP

**TIGAR**  
(IMG-5910A)



Description	Cat No	Format	Clone	Host	Species	Application
<b>Ubiquitin</b>	IMG-5021	Ascites	Ubi-1	Mouse	Multiple	IF/ICC, IHC-P, WB
<b>Ubiquitin</b>	IMG-5020	Sera	N/A	Rabbit	Multiple	IF/ICC, WB
<b>Ubiquitin-conjugating enzyme Apollon/BRUCE/BIRC6</b>	IMX-5216	Sera	N/A	Rabbit	H	ELISA
<b>UCP4 (uncoupling protein4)</b>	IMG-6289A	PAP	N/A	Rabbit	Multiple	IHC-P, WB
<b>ULK1</b>	IMX-6143	Sera	N/A	Rabbit	H	ELISA
<b>ULK1/Unc-51</b>	IMG-6083A	Purified	N/A	Rabbit	H, Mk, M	IHC-P, WB
<b>Ulp1p</b>	IMG-4025	Purified	N/A	Rabbit	<i>S. pombe</i>	WB
<b>UNG</b>	IMG-403	Purified	N/A	Rabbit	H, M, R	WB
<b>URP1</b>	IMG-4172	Purified	N/A	Rabbit	Multiple	WB
<b>UVRAG</b>	IMG-6160A	PAP	N/A	Rabbit	Multiple	WB
<b>WWOX</b>	IMG-4187	Purified	N/A	Rabbit	H	IF/ICC, IHC-P, WB
<b>XAF-1</b>	IMG-379	Purified	N/A	Rabbit	H, M	IHC-P, WB
<b>XAF-1 (CT)</b>	IMG-5589	PAP	N/A	Rabbit	H, M	IHC-P, WB
<b>XAF-1 (IN)</b>	IMG-5542	PAP	N/A	Rabbit	H	WB
<b>XIAP</b>	IMG-5770	Sera	N/A	Rabbit	Multiple	IHC-Fr, IHC-P, IP, WB
<b>XIAP</b>	IMG-5771	Sera	N/A	Rabbit	Multiple	IHC-Fr, IHC-P, IP, WB
<b>XIAP</b>	IMG-5772	Sera	N/A	Rabbit	Multiple	IHC-Fr, IHC-P, IP, WB
<b>XIAP</b>	IMG-5773	Sera	N/A	Rabbit	Multiple	IHC-Fr, IHC-P, IP, WB
<b>XIAP</b>	IMG-5774	Sera	N/A	Rabbit	H	IHC-Fr, IHC-P, IP, WB
<b>XIAP (CT)</b>	IMG-5590	PAP	N/A	Rabbit	H, M	IHC-P, WB
<b>Zip Kinase</b>	IMG-130	Purified	N/A	Rabbit	H	WB
<b>ZU5</b>	IMX-5242	Sera	N/A	Rabbit	H	ELISA
<b>ZU5</b>	IMX-5243	Sera	N/A	Rabbit	H	ELISA

## Apoptosis Related Kits

Description	Cat No	Quantity
<b>CytoGLO™ Annexin V-FITC</b>	10085K	100 Tests
<b>FAM Caspases Activity Kit</b>	IMI-2315	25 or 100 Tests
<b>SR Caspases Activity Kit</b>	IMI-2316	25 or 100 Tests
<b>MitoGLO™</b>	IMI-2317	25 or 100 Tests



[www.imgenex.com](http://www.imgenex.com)

---

11175 Flintkote Avenue, Suite E

San Diego, CA 92121

**Toll-free** (888) 723-4363

**Fax** (858) 642-0937

**Email** [info@imgenex.com](mailto:info@imgenex.com)

