



FACILITY AUDIT PACKAGE

**CLEAN EARTH OF NORTH JERSEY, INC.
(CENJ)**

115 Jacobus Avenue
South Kearny, NJ 07032

September 2010

GENERAL INFORMATION

FACILITY NAME	Clean Earth of North Jersey, Inc.
FACILITY ADDRESS	105 Jacobus Avenue South Kearny, NJ 07032
FACILITY MAILING ADDRESS	115 Jacobus Avenue South Kearny, NJ 07032
TELEPHONE NUMBER	973-344-4004
FAX NUMBER	973-344-8652
EPA ID NUMBER	NJD991291105
FOUNDED	1972
INCORPORATED	December, 1998
PARENT CORPORATION	Clean Earth, Inc.

1

FACILITY LOCATION & MAP

2

PROPERTY HISTORY

3

***SITE GEOLOGY
GROUNDWATER USE***

4

***WASTE APPROVAL
PROCESS***

5

***ACCEPTED EPA WASTE
TYPES***

6

FACILITY PERMITS

7

FACILITY INSURANCE

8

REGULATORY CONTACTS

9

MATERIAL HANDLING

10

ORGANIZATIONAL CHARTS

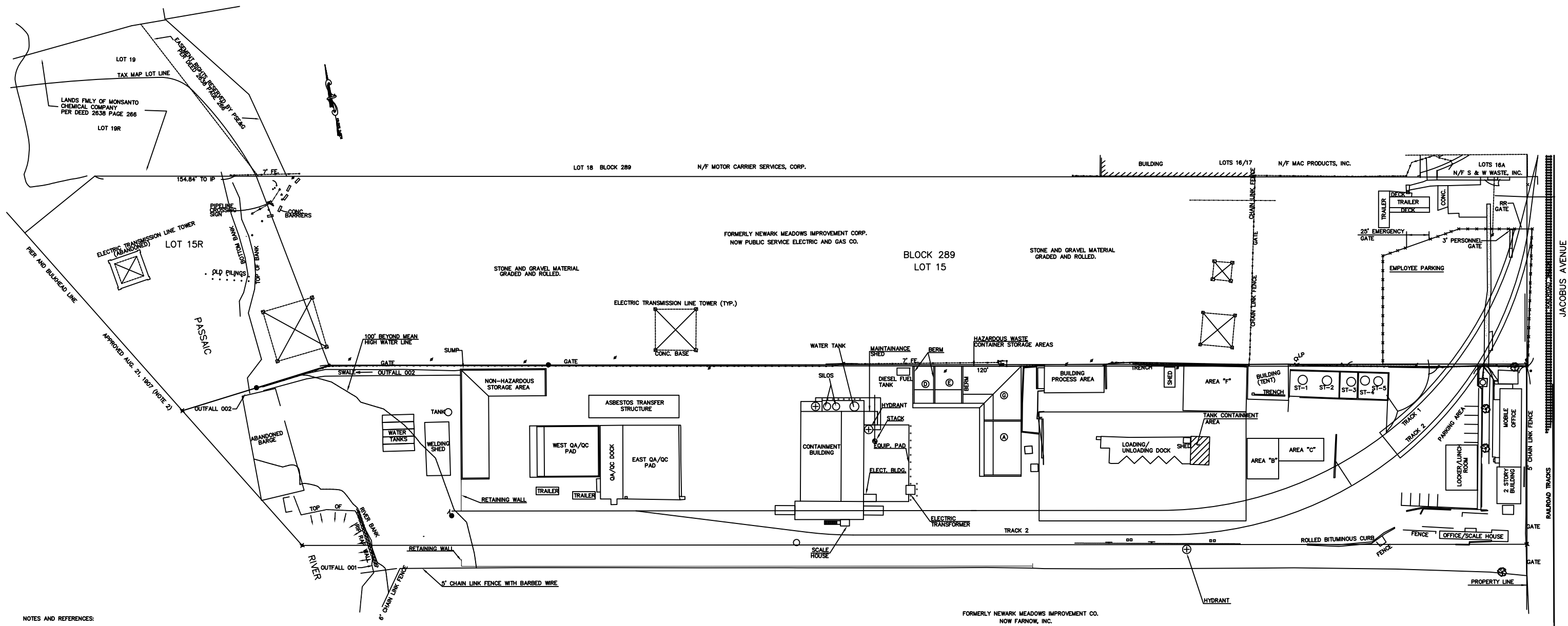
Clean Earth of North Jersey, Inc.

Facility Location and Map

Clean Earth of North Jersey, Inc.

Facility Location

The CENJ property consists of approximately 5.83 acres, which occupy Block 289, Lots 14 and 14A, in the Town of Kearny. The site address is 105 Jacobus Avenue. This is a heavily industrialized area and the CENJ site is surrounded by sites which have been used in the past and continue to be used for various industrialized activities. The site is bordered to the North by property owned by Public Service Electric and Gas, to the East by Conrail right-of-way and then Jacobus Avenue, to the South by the former Syncon Resins facility (a NPL listed site), and to the West by the Passaic River.



NOTES AND REFERENCES:

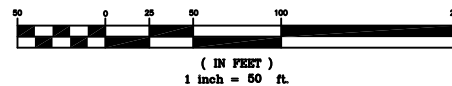
1. ELEVATIONS AND CONTOURS BASED UPON FIELD DATA OBTAINED NOVEMBER 2000 AND UPDATED JUNE 2005. ELEVATIONS IN NAVD 1929.
2. AS INDICATED BY THE ELEVATIONS AND CONTOURS THE EXISTING GRADIENT OF THE PROPERTY IS A GRADUAL SLOPE FROM A POINT NEAR JACOBUS AVENUE TO THE PASSAIC RIVER.
3. MHW LINE ELEVATION 3.4 (NVD29) ESTABLISHED FROM TIDAL DATUMS AT "POINT NO POINT, PASSAIC RIVER" AND TIDAL BENCH MARK C72 1965.

MAP REFERENCE:
NEW CONTAINMENT BLDG. & RAIL ACCESS, PREPARED FOR - CLEAN EARTH OF NORTH JERSEY INC. DRAWING ENTITLED "SITE PLAN-SP1" BY LEANORD BUSCH ASSOCIATES. 3/01/05, REVISED 11/02/05.

LEGEND

- EXISTING CONTOUR
- HYDRANT
- UTILITY POLE

GRAPHIC SCALE



DWG. NAME	SITE PLAN CEC
DRAWN	CLC
CHECKED	AR
SCALE	1"=100'
DATE	3/26/09

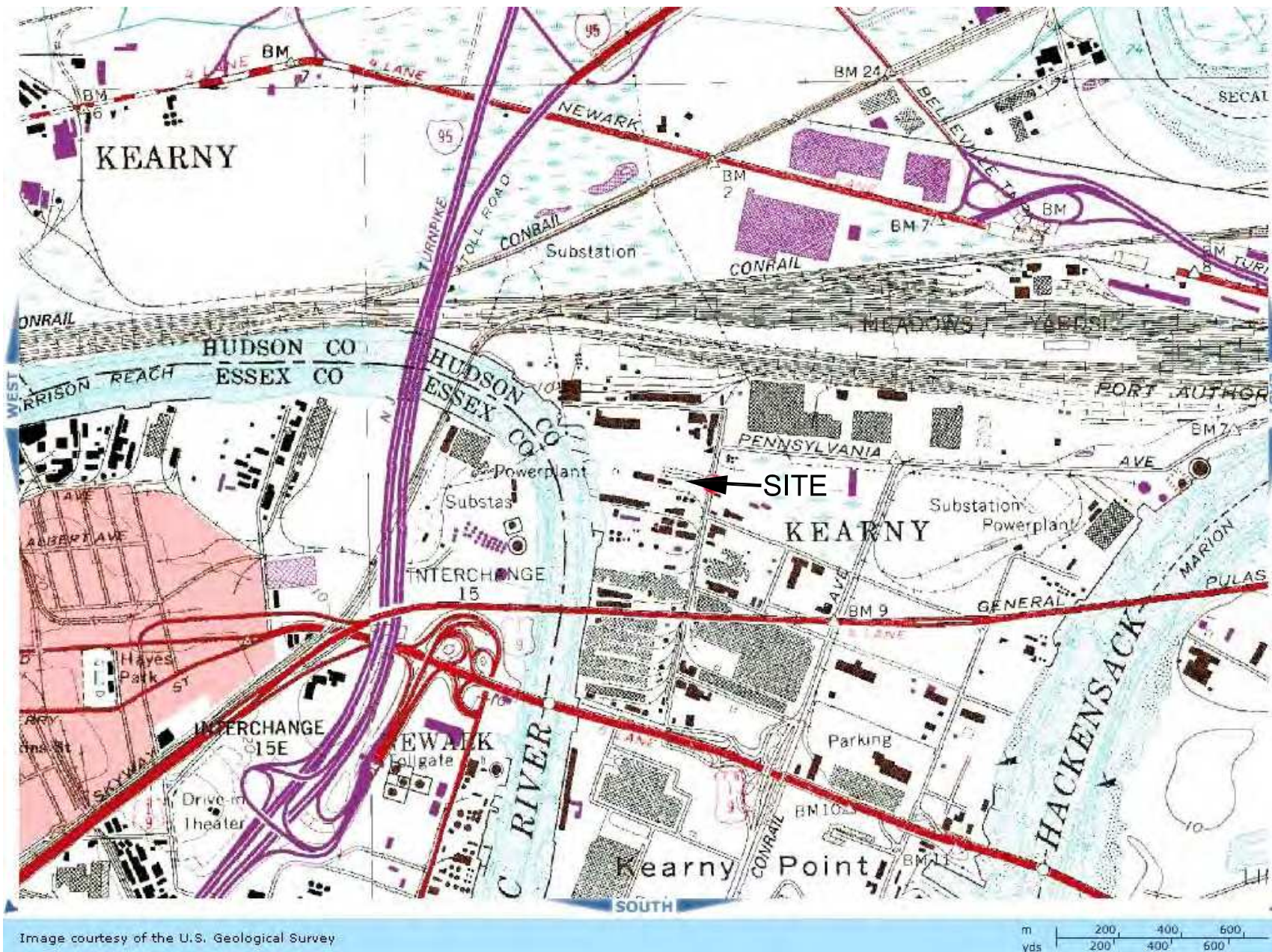
SITE PLAN

FOR

CLEAN EARTH OF NORTH JERSEY
105 JACOBUS AVENUE
SOUTH KEARNEY, NEW JERSEY

DRAWING NUMBER

1



SOURCE: USGS TOPO MAP, NEW YORK QUAD, NEW YORK, NY. (TERRA SERVER)

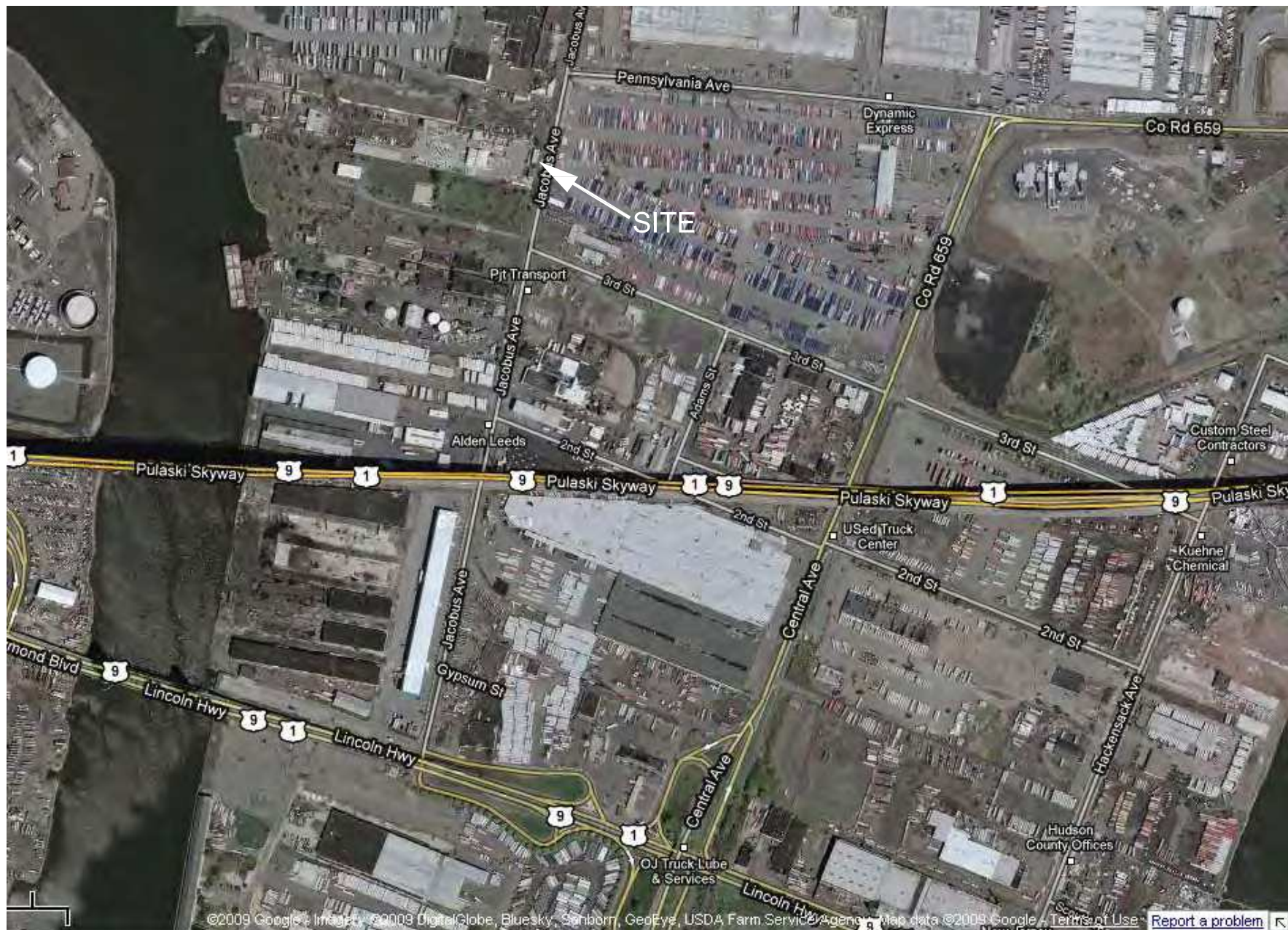


DWG. NAME	SITE LOCATION
DRAWN	CLC
CHECKED	CLC
SCALE	NTS
DATE	12/10/08

SITE LOCATION
CLEAN EARTH OF NORTH JERSEY
 105 JACOBUS AVENUE
 SOUTH KEARNY, HUDSON COUNTY, NEW JERSEY

FIGURE:

2



SOURCE: GOOGLE MAPS, 2010



DWG. NAME	SITE LOCATION
DRAWN	CLC
CHECKED	CLC
SCALE	NTS
DATE	10/29/09

AERIAL PHOTOGRAPH
 CLEAN EARTH OF NORTH JERSEY
 105 JACOBUS AVENUE
 SOUTH KEARNY, HUDSON COUNTY, NEW JERSEY

FIGURE:

3

Clean Earth of North Jersey, Inc.

Property History

PROPERTY HISTORY

Clean Earth of North Jersey, Inc. (CENJ), a New Jersey Corporation, currently operates a hazardous waste treatment, storage and transfer facility at the site located in Kearny, New Jersey. The site operational and ownership history from 1910 to the present is presented below:

<u>Purchaser</u>	<u>Block / Lot</u>	<u>Date of Deed</u>
Foundation Co.	289/14, 14A, 14R	03/10/10
Apex Leasing Corp.	289/14, 14A, 14R	06/26/63
Jacobus Realty	289/14, 14A, 14R	11/15/72
Schuyler Service Co.	289/14, 14A, 14R	10/19/79
Evergreen Part.	289/14	03/06/80
Warren Disch	289/14A, 14R	06/25/80
Evergreen Part.	289/14A, 14R	12/28/83
Melon Leasing Corp.	289/14, 14A, 14R	02/02/87
U. S. Plastic Lumber Corp.	289/14, 14A, 14R	12/30/98
Clean Earth, Inc.	289/14, 14A, 14R	09/09/02

From March 10, 1910 to June 26, 1963, the property was owned by the Foundation Company; a New York Corporation, which dissolved in 1969. The Foundation Company, according to its certificate of incorporation, appeared to be involved in all aspects of the construction industry. Available information indicates that the Foundation Company used the property to store construction equipment and material. It is also believed that explosive materials and paints were stored on the site during this period. Current addresses for former Foundation Company officials are unknown.

From June 26, 1963 to November 15, 1972, the property was owned by Robert P. Herzog, Trustee in Bankruptcy for the Apex Equipment and Leasing Corporation (Apex), a NJ Corporation. From the certificate of incorporation for this company, it appears that the company was involved in the trading of various types of heavy equipment. However it is not known how Apex used the property in question. Apparently, the company went bankrupt during the time that it owned the property, as the property was sold by a Trustee in Bankruptcy in 1972. Current addresses for former officials of Apex are unknown.

Property History (Con't)

From November 15, 1972 through October 19, 1979, the property was owned by Jacobus Realty, a New Jersey partnership. It is not known how the property was used during this period. Offices for Jacobus Realty in 1979 were located at 91 E. Peddie St., Newark, NJ. A current address for this former property owner is unknown.

From October 19, 1979 through March 6, 1980, the property was owned by the Schuyler Service Company, a New Jersey Corporation, Warren Disch, President. Mr. Disch was involved with marine salvage and construction activities. It is also believed that small quantities of waste oils were stored on site. A current address for Schuyler Service Co. is not known.

March 6, 1980 to February 2, 1987, Lot 14 was registered as being owned by Salvatore and William Moscatello, partners, trading as Evergreen Partnership with offices located at 115 Jacobus Avenue, Kearny, NJ. Lot 14 was purchased by the Evergreen Partnership on March 6, 1980 and Lots 14A and 14R were purchased by the Evergreen Partnership on December 28, 1983. From June 25, 1980 until December 28, 1983, Lots 14A and 14R were owned by Warren R. Disch. From 1983 until 1990, Mr. Disch leased Lot 14R from S&W. S&W started the operation of its hazardous waste treatment, storage and transfer facility on Lot 14 and 14A during this period, on October 3, 1984. Prior to 1984, Lot 14 was used for the storage of empty tractor trailer trucks and Lot 14A was used for wooden pallet reconditioning operations.

From February 2, 1987 until December 30, 1998 the registered owner of the property was Melon Leasing Corporation, Inc., with offices located at 115 Jacobus Avenue, Kearny, NJ. The property was registered as being leased to Amtech Environmental Corporation. During this ownership period, S&W continued to operate its hazardous waste treatment, storage and transfer facility on the property.

Amtech and Melon are property holding companies, having owned only the S&W facility and improvements thereon, which were leased to S&W. The two affiliated companies had no employees and no operations other than real estate. No separate financial statements were prepared for Amtech or Melon. S&W, Melon and Amtech were all owned by the same individual.

On December 30, 1998 U. S. Plastic Lumber Corp. acquired 100% of the outstanding shares of S&W Waste, Inc., and purchased the real property and improvements from Amtech and Melon. After this purchase S&W Waste, Inc. was

Property History, (Con't)

operated as a wholly owned subsidiary of Clean Earth, Inc., the environmental services division of U. S. Plastic Lumber Corp.

On April 16, 2001 S&W Waste, Inc. changed its name to Clean Earth of North Jersey, Inc. Effective September 25, 2001 the Hazardous Waste Facility Permit was also changed to Clean Earth of North Jersey, Inc.

On September 9, 2002 CEI Holding Corp. acquired all of the assets of Clean Earth of North Jersey, Inc. from U. S. Plastic Lumber Corp. CEI Holding Corp. is doing business as Clean Earth, Inc.

On October 17, 2005 Clean Earth Holdings, Inc. acquired all of the assets of Clean Earth of North Jersey, Inc. from CEI Holding Corp. Clean Earth Holdings, Inc. is doing business as Clean Earth, Inc.

d:\public\karen old\prop ww

Clean Earth of North Jersey, Inc.

Site Geology

REGIONAL GEOLOGY

The CENJ site is located in the Triassic Lowlands of the Piedmont Province, one of the six provinces included in the Appalachian Highlands physiographic region. The Piedmont Province in New Jersey coincides, for the most part, with the area of Triassic age rocks known as the Newark Supergroup. The formations of the Newark Supergroup comprise a thick sequence of non-marine deposits that accumulated in a rift valley during a phase of the opening of the Atlantic Ocean.

Diabase sills are found interbedded with or intruding the sediments. Most of the topography of the area is due to the outcropping of the diabase or the erosion of the softer sedimentary rock in between.

The bedrock underlying the site consists of the Brunswick Formation (Widmer, 1959). Overlying the bedrock are unconsolidated sediments of Pleistocene and Recent Epochs. The Pleistocene age sediments were deposited by glaciers and glacial melt waters. Recent sediments were and are presently being deposited by streams.

The Brunswick Formation is the youngest member of the Newark Supergroup. Most of the Formation is very fine-grained, thin-bedded, bright red to reddish-brown shale. In the Newark area, however, the rocks tend to increase in coarseness toward the northeast. In north Newark the rocks are principally sandstone with interbedded shale (Herper and Barksdale, 1951).

At the close of the Triassic time, the entire Newark group of rocks were tilted towards the northwest. In the process they were faulted and greatly fractured. Numerous well-developed fractures intersect the Brunswick Formation at high angles to bedding, parallel to it, and at intermediate angles.

The total thickness of the Triassic age bedrock in the Newark area is unknown, but is estimated at about 6,000 to 7,000 feet (Herper and Barksdale, 1951). Bedrock was first encountered at a depth of approximately 60 feet at the Syncon Resins Property, located adjacent to the CENJ site.

The Pleistocene deposits are of glacial origin. They are predominantly till (a mixture of unconsolidated, unstratified, heterogeneous mixture of clay, boulders, and sand) and glacial drift (sand and gravel) that has been sorted and stratified by the action of glacial waters. The character of the Pleistocene deposits varies greatly in the Newark area, but in general they consist largely of stratified materials with interbedded lenses of till in the eastern part of the area (Herper & Barksdale, 1951).

The recent deposits are found mainly in the tidal marshes or meadowlands along the Passiac River and bordering Newark Bay. They consist primarily of unconsolidated mud and silt with inclusions of peat and other organic materials. Occasional lenses of sand and gravel are also found. They are deposited on top of the Pleistocene sediments by the Passiac and Hackensack Rivers and by smaller streams flowing across the area. The recent deposits range from a feather edge to 35 feet in thickness (Herper & Barksdale, 1951).

Site Geology

The general geological profile for this site can be characterized by four distinct strata, a silt and sand layer located at the upper portion of the profile, a clay layer which underlies the upper unit, a sand layer confined by the clay layer and a deep silty clay layer.

As part of CENJ's groundwater monitoring program, nine (9) monitoring wells and four (4) observation wells were installed at the site. During installation of these wells groundwater was encountered at depths ranging from 3 feet to 4 feet below grade.

The information obtained from the installation of monitoring wells confirmed the existence of a continuous confining clay layer underlying a permeable shallow unit. Based on the available soil boring information from the monitor wells, observation wells, and soil borings completed on site, the upper portion of the geological profile at the site consists mainly of two units. The upper unit consists of a brown-gray poorly sorted sand, which was occasionally found to contain fragments of mollusk shells. This unit ranged in thickness from 2.5 feet to 7 feet. A second unit consisting of a gray plastic clay was observed under the sand unit. The depth to the clay layer ranged from 7.5 feet to 11.5 feet below grade.

While no investigation has been conducted to determine the thickness of the clay layer at the CENJ site, the following sediment profile was identified at the adjoining Syncon Resins site:

- 1) A 8 - 10 foot surficial fine to coarse sand layer
- 2) A 10 foot highly plastic clay layer
- 3) A 10 foot medium sand layer
- 4) A deep silty clay / very fine sand layer

A similar stratigraphy was identified at the nearby Monsanto Kearny Plant. The above soil profile appears to form part of the Pleistocene deposits of glacial origin previously described in the section titled "Regional Geology".

The native soils at the site are overlain by approximately 2.5 feet to 8 feet of fill materials. The fill materials observed in the soil boring included cinders, glass, ceramic, brick, coal, gravel, wood, concrete, asphalt, various sands, silts and clays.

In order to better define the nature of the confining clay layer that underlies the upper geological unit, Shelby tube samples were collected from the clay layer during the installation of certain monitoring wells. Hydraulic conductivity tests were performed on the undisturbed soil samples contained in the Shelby tubes, using laboratory procedures in accordance with the standard procedures established by the American Society for Testing and Materials, ASTM, Designation D5084-90 "Standard Test Method for Measurement of Hydraulic Conductivity of Saturated Porous Materials Using a Flexible Well Permeameter." The hydraulic conductivity values obtained from the laboratory analysis of clay and silt soil samples fall into the "very low" permeability categories.

In several of the soil borings performed on the eastern portion of the property a dark gray silty clay with some black organic matter was observed at the base of the fill materials. The occurrence of these organic materials may indicate the presence of recent deposits at the CENJ site. However, it appears that any recent deposits present at the site have been disturbed by the historic filling activities and, therefore, are not likely to have significant effect on the hydraulic characteristics of the shallow hydraulic units in the vicinity of the site.

There are three primary aquifers at the site. The shallow aquifer consists of the uppermost sand unit of Pleistocene origin. Immediately underlying the shallow aquifer is an aquitard, which is approximately 10 feet thick unit of medium sand. This unit is confined from bedrock by another unit of silty clay. The second unit is a confined deep aquifer. The third aquifer is the weathered Brunswick shale.

Based upon a review of the soil boring logs and hydrogeological studies conducted at the Syncon Resins site and CENJ's site, the CENJ site is underlain by shallow and deeper aquifer systems. The upper aquifer is unconfined and bound by a low permeability layer acting as a barrier to vertical groundwater flow. The low permeability layer consists of highly plastic clay approximately 8 to 10 feet thick.

Clean Earth of North Jersey, Inc.

Waste Stream Approval Process

WASTE APPROVAL PROCESS

Waste Material Profile Sheet

The "Waste Material Profile Sheet" (WMPS) (attachment 1) is prepared by the generator or his authorized agent before the waste is accepted into the CENJ facility and is updated whenever a process change alters the characteristics of the waste or on a biannual basis. The WMPS may be accompanied by a representative sample of the waste which is analyzed at CENJ's or an outside certified laboratory. Each sample submitted must be accompanied by a "Chain of Custody/Certification of Representative Sample Form" (attachment 2). A representative sample is not required if the waste to be disposed can be properly classified by the generator (see 40CFR 268.7). For these wastes the inbound truck will be sampled, and the analytical results will be the determining factor whether the load will be accepted or not.

Once the applicable analyses are performed, the results are entered on the "Laboratory Service Request Form" (LSR) (Attachment 3) and the completed LSR is attached to the WMPS. This now makes a complete package which is reviewed by three departments within CENJ. The Environmental, Sales Administration and Safety Departments must review each WMPS. In order for a WMPS to receive an CENJ approval code number these three departments must approve the WMPS. If any one department does not approve the WMPS, an approval number cannot be issued and the waste cannot be received by the CENJ facility.

If a waste stream (WMPS) is approved, it is issued an unique approval code number. Once a WMPS has been approved and a load scheduled, it will follow the below listed waste acceptance procedures at the CENJ facility.

Waste Acceptance Process

- 1) When the shipment arrives, it is weighed and the driver checks in with the paperwork at the dispatch office. The paperwork is brought to the Environmental Department which reviews the manifest to make sure it is properly completed and that it has a valid approval code number.
- 2) If the paperwork is acceptable, the shipment is directed to the Quality Control Building, or other approved areas, for sampling. Copies of the "Manifest" and "Land Ban Notification Form" as well as a "QA/QC Sheet" are sent with the truck to this area.
- 3) The shipment is sampled according to the CENJ Waste Analysis Plan (WAP). The samples are submitted to the CENJ Laboratory with a QA/QC Form that has an analysis grid for each sample.

- 4) The Lab completes the required analytical work and records the results on the QA/QC Form. This form with a copy of the Manifest and Land Ban Notification Form attached is sent to the Environmental Department. The Environmental Department reviews the QA/QC and determines whether the shipment conforms with the approved WMPS. If the shipment does conform, it is stamped "Approved" and signed off by the Environmental Department. No waste shipments can be processed without having an Environmental sign-off. If the shipment is off-spec, it can still be accepted if it is a waste type that CENJ is permitted to receive provided proper discrepancy reports are completed. If the shipment cannot be received, the generator is notified and the shipment is rejected back to the generator.
- 5) Shipments which have been approved by the Environmental Department for acceptance are logged by them into a computer program called "Haz-Trax". The approved QA/QC is then forwarded to the Operations Department for processing.
- 6) Once the material is processed, it is prepared for off-site shipment. The prepared load is staged, sampled and analyzed. The sample analysis for outbound shipments mirrors the receiving facility's waste acceptance analysis for final disposal. The outbound sample analysis is recorded on a QA/QC Form and submitted to the Environmental staff. The Environmental staff reviews the QA/QC results to make sure the load conforms to CENJ's waste approval at the receiving facility. In addition, the Environmental Department receives from the Operations Department a "Loading Report Form" which lists all of the generators whose waste was processed to make up the load, including EPA Waste Numbers. The Environmental Department reviews this list and compares it to the computer tracking system for inbound waste. Each generator's waste stream is reviewed to make sure it appears on the inbound tracking system. If all paperwork is in order and the QA/QC is approved, an outbound manifest is prepared for the shipment. The Environmental Department is the only department that can sign outbound Hazardous Waste Manifests.
- 7) After the outbound shipment reaches its destination certificates of disposal can be generated.

115 Jacobus Avenue, Kearny, NJ 07032 (973) 344-4004

A. GENERATOR INFORMATION

Generator's Name _____

Mailing Address

Waste Pickup Address

EPA ID No. _____ MSDS Attached ☐ Yes ☐ No

Tech Contact	Phone
--------------	-------

Common Name of Waste

Process Generating Waste

Biennial Report Codes: SIC Code Source Code A Form Code B

Origin Code	System Type
-------------	-------------

Is this waste from a plant closure or plant clean up? ☐ Yes ☐ No

B. PHYSICAL/CHEMICAL CHARACTERISTIC

<p>REACTIVITY (PPM)</p> <p>Total Cyanides _____</p> <p>Amenable Cyanides _____</p> <p>Reactive Sulfides _____</p> <p>Check if waste is:</p> <p><input type="checkbox"/> Water Reactive</p> <p><input type="checkbox"/> Air Reactive</p> <p><input type="checkbox"/> Shock Sensitive</p> <p><input type="checkbox"/> Generates Toxic Fumes When mixed with Acid, Base or H2O</p>	<p>PHYSICAL STATE @ 70°F</p> <p><input type="checkbox"/> Solid</p> <p><input type="checkbox"/> Liquid</p> <p><input type="checkbox"/> Powder</p> <p><input type="checkbox"/> Semi-Solid</p> <p><input type="checkbox"/> Single Phase</p> <p><input type="checkbox"/> Bi-Layered</p> <p><input type="checkbox"/> Multi-Layered</p> <p><input type="checkbox"/> Gas/Aerosol/Solid</p>	<p>PERCENT LIQUID/SOLID</p> <p>Total Solids _____ %</p> <p>Suspended Solids _____ %</p> <p>Free Liquid _____ %</p> <p>Water _____ %</p>	<p>SPECIFIC GRAVITY</p> <p>_____ < .8</p> <p>_____ ≥ .8 ≤ 1</p> <p>_____ > 1 ≤ 1.2</p> <p>_____ > 1.2</p>
<p>ODOR</p> <p><input type="checkbox"/> None <input type="checkbox"/> Mild <input type="checkbox"/> Strong</p> <p>Describe _____</p>	<p>CORROSIVITY (pH)</p> <p>_____ ≤ 2.0</p> <p>_____ 2.01 - 5.0</p> <p>_____ 5.01 - 9.0</p> <p>_____ 9.01 - 12.49</p> <p>_____ ≥ 12.50</p> <p>_____ Exact pH</p>	<p>IGNITABILITY</p> <p>Liquids:</p> <p>Flash Point °F</p> <p>_____ < 100°</p> <p>_____ ≥ 100° ≤ 140°</p> <p>_____ > 140° ≤ 200°</p> <p>_____ > 200°</p> <p>_____ Actual</p> <p>Solids:</p> <p><input type="checkbox"/> Yes <input type="checkbox"/> No</p>	<p>Exact:</p> <p>_____</p>

C. CHEMICAL COMPOSITION

[illegible]

Please note the chemical composition total in the range (Max.) column must be greater than or equal to 100 percent.

Approval Code	D)	B)
---------------	----	----

Generic Code	D)	B)
--------------	----	----

Customer #

LSR #

Master WPS ☐ Yes ☐ No

Technical Rep. Initials

Broker Name (if applicable)

Approval Date

D. TOXICITY CHARACTERISTICS

Contaminant	EPA Waste #	Regulatory Level (mg/L)	Actual Level
Arsenic	D004	5.0	
Barium	D005	100.0	
Cadmium	D006	1.0	
Chromium	D007	5.0	
Chromium CR+ 6	D007	5.0	
Lead	D008	5.0	
Mercury	D009	0.2	
Selenium	D010	1.0	
Silver	D011	5.0	
Benzene	D018	0.5	
Carbon Tetrachloride	D019	0.5	
Chlordane	D020	0.03	
Chlorobenzene	D021	100.0	
Chloroform	D022	6.0	
o-Cresol	D023	200.0 **	
m-Cresol	D024	200.0 **	
p-Cresol	D025	200.0 **	
Cresol	D026	200.0 **	
2,4-D	D016	10.0	
1,4-Dichlorobenzene	D027	7.5	
1,2-Dichloroethane	D028	0.5	
1,1-Dichloroethylene	D029	0.7	
2,4-Dinitrotoluene	D030	0.13 *	
Endrin	D012	0.02	
Heptachlor (and its episode)	D031	0.008	
Hexachlorobenzene	D032	0.13 *	
Hexachlorobutadiene	D033	0.5	
Hexachloroethane	D034	3.0	
Lindane	D013	0.4	
Methoxychlor	D014	10.0	
Methyl Ethyl Ketone	D035	200.0	
Nitrobenzene	D036	2.0	
Pentachlorophenol	D037	100.0	
Pyridine	D038	5.0 *	
Tetrachloroethylene	D039	0.7	
Toxaphene	D015	0.5	
Trichloroethylene	D040	0.5	
2,4,5-Trichlorophenol	D041	400.0	
2,4,6-Trichlorophenol	D042	2.0	
2,4,5-TP (Silvex)	D017	1.0	
Vinyl chloride	D043	0.2	

* Quantitation limit is greater than the calculated regulatory level. The quantitation limit therefore becomes the regulatory level.

** If o-,m- and p-Cresol concentrations cannot be differentiated, the total Cresol (D026) concentration is used. The regulatory level of total Cresol is 200mg/L.

E. HAZARDOUS CHARACTERISTICS

- | | |
|---|---|
| <input type="checkbox"/> Radioactive | <input type="checkbox"/> Compressed Gas |
| <input type="checkbox"/> Infectious | <input type="checkbox"/> Flammable Solid |
| <input type="checkbox"/> Toxic | <input type="checkbox"/> Organic Peroxide |
| <input type="checkbox"/> Explosive | <input type="checkbox"/> Shock Sensitive |
| <input type="checkbox"/> Pyrophoric | <input type="checkbox"/> Reactive Metals |
| <input type="checkbox"/> Oxidizer | (Specify in section C) |
| <input type="checkbox"/> Corrosive | |
| <input type="checkbox"/> Other Describe _____ | |
| <input type="checkbox"/> Corrosive | |
| <input type="checkbox"/> None of the above | |

G. SHIPPING INFORMATION

- | | |
|---|--|
| <input type="checkbox"/> Bulk Liquid | <input type="checkbox"/> Drums (Steel) |
| <input type="checkbox"/> Bulk Solid | <input type="checkbox"/> Drums (Poly) |
| <input type="checkbox"/> Bulk Sludge | |
| <input type="checkbox"/> Other Describe _____ | |
- Shipping Frequency: _____ Quantity _____ Per _____

H. MANIFEST INFORMATIONIs this a DOT Hazardous Material? ☐ Yes ☐ No

Proper DOT shipping name (49CFR table 172.101) _____ Rq. Units (lb/kg) _____

DOT Hazard Class / Division: _____ UN/UA _____ Packing Group (select one) ☐ I ☐ II ☐ III

Additional descriptions requirements (49CFR 172.203) _____

Emergency response telephone number (49CFR 172.604) _____ Contact (print name) _____

I. WASTE CHARACTERISTICSIs this a US EPA Hazardous Waste? ☐ Yes ☐ No US EPA Hazardous Waste Number(s) _____ Hazard Codes _____

If yes, if the waste is a characteristic hazardous waste, does it contain underlying hazardous constituents (as defined at 40CFR 268.2(l)) Above the Universal Treatment Standard.

☐ Yes ☐ No If yes, please complete the UHC Waste Profile Addendum.

State Non-Hazardous Waste Number(s) _____

Does this waste contain any PCBs? ☐ Yes ☐ No If yes, indicate level _____ Are PCBs TSCA Regulated? ☐ Yes ☐ NoDoes this waste contain any herbicides, pesticides, dioxin or residues thereof? ☐ Yes ☐ No If yes, list compound and concentration in Section C.Is this waste prohibited from land disposal under 40CFR Part 268? ☐ Yes ☐ NoIf yes, list waste subcategory description, if applicable _____ or check none ☐ NoneIs this waste a (check one) ☐ Non-Wastewater ☐ Wastewater? (See 40CFR 268.2)

Benzene NESHAP applicability: Is waste subject to management under National Emission Standards for Benzene Waste Operations as provided in 40CFR Part 61 Subpart FF?

☐ Yes ☐ No If yes, give benzene concentration _____Does this waste contain any N-Nitroso-N-Methylurea? ☐ Yes ☐ No If yes, give concentration _____If this waste is a RCRA Hazardous Waste, does it contain VOCs in concentrations ≥ 500 PPM (40CFR Subpart CC)? ☐ Yes ☐ NoAre there any special handling instructions for the disposal of this waste? ☐ Yes ☐ No If yes, specify _____**J. AUTHORIZATION TO CORRECT WMPS**

I AUTHORIZE CLEAN EARTH OF NORTH JERSEY TO MAKE CORRECTIONS TO THIS WMPS. CORRECTIONS MUST BE CONSISTENT WITH THE RESULTS OF SAMPLE ANALYSIS AND REGULATORY REQUIREMENTS. I UNDERSTAND THAT A CORRECTED COPY OF THE WMPS WILL BE SENT TO ME.

Signature _____

K. SPECIAL HANDLING COMMENTS**L. OFFICIAL USE ONLY****M. APPROVAL**

_____	_____	Safety _____
_____	_____	Environ _____
_____	_____	

N. POLYCHLORINATED BIPHENYL (PCB), HERBICIDE, INSECTICIDE/ALUMINUM AND REACTIVE METAL WARRANTY

I hereby warrant that the material transferred to Clean Earth of North Jersey (CENJ) for transportation, treatment, storage and/or disposal is not radioactive waste, does not contain >1% asbestos and is not contaminated by either Polychlorinated Biphenyl or Herbicide/Pesticide/Insecticide or Dioxins or Furans of any value unless it is listed in Section C and approved by CENJ, nor does it contain Elemental Aluminum or Reactive Metal Paste, Powder, or Pigment unless it is listed in Section C and approved by CENJ and hereby agree to indemnify and hold CENJ harmless from any costs, damages, or other liability resulting from breach of this warranty or any other terms and conditions of this Waste Material Profile Sheet, including the indemnification listed on the back page.

O. The information on this Waste Material Profile Sheet (WMPS) may have been prepared by other individuals. By signing Section O of this WMPS, I certify that all information, including any attached information, is complete and is an accurate representation of the waste and its known or suspected hazards.

Date _____	Printed Name _____	Title _____	Generator's Signature _____
------------	--------------------	-------------	-----------------------------

Clean Earth of North Jersey has all of the appropriate permits for and will accept the waste that has been characterized/identified by this Approved Waste Material Profile Sheet.

WASTE MATERIAL PROFILE SHEET INSTRUCTIONS

The following information is required of all waste to be considered for transportation, storage, treatment or disposal. It is used to determine that the waste may be transported, stored, treated or disposed of in a legal, safe and environmentally sound manner. All questions must be answered and completed in ink. Response of "NONE" or "NOT APPLICABLE" should be made if appropriate. Most items required are self-explanatory. Other items need definition or instruction as follows:

PART A – GENERATOR INFORMATION

GENERATOR NAME AND ADDRESS- As notified to EPA.

MAILING ADDRESS- Should be the location that will manage the returned waste profile sheets and manifest.

US EPA ID- For the facility generating the waste.

TECHNICAL CONTACT- A person who could give additional information about the waste, if needed.

COMMON NAME OF WASTE- A name which will be generally descriptive of the waste; a generic classification (e.g., paint, oil and water).

PROCESS GENERATING WASTE- Specific descriptive process or source which generates the waste.

PART B – PHYSICAL/CHEMICAL CHARACTERISTICS OF WASTE

ODOR- If present, describe as well as possible (e.g., solvent, acrid, sweet).

COLOR- Self explanatory.

PHYSICAL STATE- Check as many as apply.

FLASH POINT/IGNITABILITY- A value attained using the appropriate testing method as set forth in 40CFR Part 261.21.

AIR REACTIVE- Will ignite spontaneously in air.

SHOCK SENSITIVE- Normally unstable and readily undergoes violent change without detonating.

GENERATES TOXIC FUMES- In sufficient quantity to endanger human health or the environment when mixed with water, acid or base.

PERCENT LIQUID/SOLID- List the % total solids, suspended solids, free liquids and water.

SPECIFIC GRAVITY- The weight of the water compared to the weight of an equal volume of the waste.

PART C – CHEMICAL COMPOSITION

List all organic and/or inorganic components of the waste using specific chemical names. If trade names are used, Material Safety Data Sheets or other documents which adequately describe the composition of the waste must be provided. For each component indicate expected percent or range in which the component is present. In case of extreme pH (less than 2 or greater than 12.5) indicate specific acid or caustic species. Any hazardous components present in "trace" amounts and not specifically mentioned in PARTS D, F and/or H should be included, even if specific concentrations are not known. Any components listed in PARTS D, F, and/or H which exceed 10,000 PPM (1%) must be included. Components must total to 100% including water, earth or other components. If a unit of measure other than percent must be used,

indicate that unit. Indicate which, if any, of the constituents are listed in SARA, Title III, Section 313. This list can be found at 40CFR Part 372. Also, indicate which, if any, of the constituents are listed in SARA, Title III, EHS Section 302. This list can be found at 40 CFR Part 355; Appendices A and B.

PART D – TOXICITY CHARACTERISTIC

Use the appropriate line to indicate the actual level, specified ranges or if below regulated level for each toxicity characteristic as defined by 40CFR Part 261.24.

PART E – HAZARDOUS CHARACTERISTICS

Complete if the waste exhibits any of the hazardous characteristics as per OSHA 29CFR Part 1910.1200 Hazard Communications Standard.

PART F – SARA/OSHA

*See below for detailed directions.

PART G – SHIPPING INFORMATION

Indicate method of shipment and type of container. If drums, they must be as specified in 49CFR Part 173, 178 or 179. Indicate quantity to be shipped during specified time frame (e.g., 10 drums per month).

PART H – MANIFEST INFORMATION

Is the waste a US DOT hazardous material as defined in 49CFR Part 172.101? If yes, enter the **SHIPPING NAME, HAZARD CLASS/ DIVISION, DOT ID NUMBER, R.Q.** (Reportable Quantity) as defined in 49CFR and identify applicable **PACKAGING GROUP**. Enter the technical names of at least two most predominant components which contribute to the hazards of the mixture or solution for all proper shipping names found in 49CFR Part 172.203 (k)3. Enter the Emergency Response Telephone number and contact name as required by 49CFR Part 172.604.

PART I – WASTE CHARACTERISTICS

Use this section to properly list all applicable US EPA/STATE Hazardous Waste Numbers and identify any waste that may be prohibited from land disposal under 40CFR Part 268.

PART J – AUTHORIZATION TO CORRECT WMPs

Provide generator's signature in this section to allow CENJ to make corrections on the WMPs that are consistent with the results of sample analysis and regulatory requirements. Signing this section will help expedite the approval

process in the event corrections need to be made.

PART K – SPECIAL HANDLING/ COMMENTS

Use this section to alert the handlers of the waste of any precautions that should be taken or if the waste requires special safety or personal protective equipment. Use this space to list any additional information that may help in managing this waste.

PARTS N/O – WARRANTIES/SIGNATURE

Please read these warranties carefully. If any of these warranties cannot be certified, state the reason in Section K, Comments. The generator of the waste must sign and date the Generator's Waste Material Profile Sheet.

*PART F – CONTINUED, Instructions on Health Hazard Characterization

Identify by checking the box which most appropriately describes the hazardous characteristics as defined below:

NONE

Self-explanatory.

HIGHLY TOXIC

- (a) A chemical that has a median lethal dose (LD50) of 50 milligrams or less per kilogram of body weight when administered orally to albino rats weighing between 200 and 300 grams each.
- (b) A chemical that has a median lethal dose (LD50) of 200 milligrams or less per kilogram of body weight when administered by continuous contact for 24 hours (or less if death occurs within 24 hours) with the bare skin of albino rabbits weighing between 2 and 3 kilograms each.
- (c) A chemical that has a median lethal concentration (LC50) in the air of 200 parts per million by volume or less of gas or vapor, or 2 milligrams per liter or less of mist, fume or dust, when administered by continuous inhalation for one hour (or less if death occurs within one hour) to albino rats weighing between 200 and 300 grams each.

TOXIC

- (a) A chemical that has median lethal dose (LD50) of more than 50 milligrams per kilogram but not more than 500 milligrams per kilogram of body weight when administered orally to albino rats weighing between 200 and 300 grams each.
- (b) A chemical that has a median lethal dose (LD50) of more than 200 milligrams per kilogram but not more than 1000 milligrams per kilogram of body weight when administered by continuous contact for 24 hours (or less if death occurs within 24 hours) with the bare skin of albino rabbits weighing between 2 and 3 kilograms each.

(c) A chemical that has a median lethal concentration (LC50) in air of more than 200 parts per million but not more than 2000 parts per million by volume of gas or vapor, or more than two milligrams per liter but not more than 20 milligrams per liter of mist, fume, or dust, when administered by continuous inhalation for one hour (or less if death occurs within one hour) to albino rats weighing between 200 and 300 grams each.

IRRITANT

Irritant means a chemical substance or mixture, not a corrosive which on immediate, prolonged or repeated contact with normal living tissues induces a local inflammatory response in the skin, eyes or mucous membranes per 16CFR Part 1500.41.

SENSITIZER

Sensitizer means a chemical substance or mixture that causes a substantial number of persons to develop a hypersensitive reaction in normal tissue upon reapplication of the chemical substance or mixture through an allergic or photodynamic reaction.

CORROSIVE

Corrosive Material means a chemical liquid or solid that causes visible destruction or irreversible alteration in human skin tissue at the site of contact or in the case of leakage from its packaging, a liquid that has a severe corrosion rate on steel.

(1) A Material is considered to be destructive or to cause irreversible alteration in skin tissue if, when tested on the intact skin of the albino rabbit by the method described in Appendix A of 49CFR Part 173, the structure of the tissue at the site of contact is destroyed or changed irreversibly after an exposure period of 4 hours or less.

(2) A liquid is considered to have a severe corrosive rate if its corrosion rate exceeds 0.250 inch per year (IPY) on steel (SAE 1020) at a test temperature of 103°F.

OTHER HAZARDOUS CHEMICALS . . .

Short Term

Acute (short term) refers to the adverse effects that normally are evident immediately or shortly after the exposure. Appropriate information on the effects of inhalation and skin or eye exposure should be entered here. The information should be in the form of simple symptomatic statements such as "pale and nauseous," "dizzy feeling," "weak," "irritation," etc. Again, refer to supplier MSDSs, the NPCA Labeling Guide or any other appropriate source for hazard warning language.

CARCINOGENS

Carcinogen means a chemical which has been demonstrated to cause cancer in humans or to cause cancer in animals and, therefore, is considered capable of causing cancer in humans. A chemical is considered to be a carcinogen if:

- (a) it has been evaluated by the International Agency for Research on Cancer (IARC) and found to be a carcinogen or potential carcinogen; or
- (b) it is listed as a carcinogen or potential carcinogen in the Annual Report on Carcinogens published by the National Toxicology Program (NTP) (latest edition); or

- (c) it is regulated by OSHA as a carcinogen.

OTHER HAZARDOUS CHEMICALS . . .

Long Term

Chronic (long term, cumulative) refers to the adverse effects that develop slowly over a long period of time or upon repeated prolonged exposure. Appropriate information on the effects of chronic overexposure should be reported here. Evidence of carcinogenicity, asbestosis, sensitization, etc., should be indicated here. Known or suspect mutagens or teratogens must also be identified here. Mutagen means those chemical or physical effects which can alter genetic material in an organism and results in physical or functional changes in all subsequent generations. Teratogen means a chemical which has been demonstrated to cause physical defects in the developing embryo.

SAMPLES

If the generator cannot properly characterize their waste, a representative sample must accompany each Waste Material Profile Sheet submitted to CENJ. The only exception would be for virgin material where a Material Safety Data Sheet (MSDS) has been submitted with the Profile Sheet.

All samples must be taken according to 40CFR Part 261 Appendix I or the New Jersey DEP Field Sampling Procedures Manual.

All samples must be packaged according to US DOT, US EPA and any other applicable regulations.

Each sample container must be properly labeled to comply with NJAC 7:26 - 8.2(A) 12ii and NJAC 8:59 - Subchapter 5 and any other applicable regulations.

A CENJ Chain of Custody Record must be completed and submitted with each sample. Samples which are not properly classified, described, packaged, marked, labeled and in the proper condition to transport according to the applicable regulations of the US DOT, OSHA, NJ DEP, New Jersey Worker and Community Right-to-Know Act and/or any other applicable regulations may be rejected and returned at the generator's expense.

INDEMNITY

Customer hereby agrees to indemnify and hold CENJ harmless from and against any and all loss, damage, suits, liability and expenses (including, but not limited to, reasonable investigation and legal expenses) arising out of any claim for loss of or damage to property, including CENJ's property, and injuries to or death of persons, including customer's or CENJ's employees, caused by or resulting from the negligence or willful misconduct or violation of any federal, state or local laws or regulations of customer, its employees or agents. CENJ hereby agrees to indemnify and hold customer harmless from and against all loss, damage, suits, liability and expenses (including, but not limited to, reasonable investigation and legal expenses) arising out of any claim for loss of or damage to property, including customer's property, and injuries to or death of persons, including CENJ's or customer's employees, to

the extent caused by or resulting from the negligence or willful misconduct of CENJ, its employees or agents.

DISTRIBUTION OF COPIES

Retain a copy for your records. Send a copy of this Generator's Waste Material Profile Sheet and attachments within the sample shipping package, ensuring that if the sample leaks, the paperwork will remain intact. Send this package to the address below.

Clean Earth of North Jersey, Inc.
115 Jacobus Avenue
Kearny, NJ 07032
T 973-344-4004
F 973-344-8652

Clean Earth of North Jersey, Inc. Underlying Hazardous Constituent (UHC) LDR Form

GENERATOR NAME: _____

MANIFEST DOC. NO.: _____

APPROVAL CODE #: _____

If D001through D043 requires treatment to 268.48 standards, then each underlying hazardous constituent present in the waste at the point of generation, and at a level above the UTS constituent specific treatment standard, must be listed. Write the letter (A,B1,B2,C or D) which corresponds to the letter found on Clean Earth of North Jersey, Inc. LDR Notification and Certification Form (page 2), beside each constituent present, to properly described how the constituent(s) must be managed under 40 CFR 268.7. If no underlying hazardous constituents are present, please check appropriate section on Page 2 of this form.

CONSTITUENT	HOW MUST CONSTITUENT BE MANAGED	WW (mg/l)	NWW (mg/kg)	CONSTITUENT	HOW MUST CONSTITUENT BE MANAGED	WW (mg/l)	NWW (mg/kg)
ORGANIC CONSTITUENTS				1,2-Dibromo-3-Chloropropane		0.11000	15.000
Acenaphthylene		0.05900	3.400	1,2-Dibromoethane (Ethylene dibromide)		0.02800	15.000
Acenaphthene		0.05900	3.400	Dibromomethane		0.11000	15.000
Acetone		0.28000	160.000	2,4-Dichlorophenoxyacetic acid (2,4-D)		0.72000	10.000
Acetonitrile		5.60000	38.000	o,p-DDD		0.02300	0.087
Acetophenone		0.01000	9.700	p,p-DDD		0.02300	0.087
2-Acetylaminofluorene		0.05900	140.000	o,p-DDE		0.03100	0.087
Acrolein		0.29000	NA	p,p-DDE		0.03100	0.087
Acrylamide		19.000	23.000	o,p-DDT		0.00390	0.087
Acrylonitrile		0.24000	84.000	p,p-DDT		0.00390	0.087
Aldicarb sulfone		0.05600	0.280	Dibenzo(a,h) anthracene		0.05500	8.200
Aldrin		0.02100	0.066	Dibenzo(a,e)pyrene		0.06100	NA
4-Aminobiphenyl		0.13000	NA	m-Dichlorobenzene		0.03600	6.000
Aniline		0.81000	14.000	o-Dichlorobenzene		0.08800	6.000
Anthracene		0.05900	3.400	p-Dichlorobenzene		0.09000	6.000
Aramite		0.36000	NA	Dichlorodifluoromethane		0.23000	7.200
Barban		0.05600	1.400	1,1-Dichloroethane		0.05900	6.000
alpha-BHC		0.00014	0.066	1,2-Dichloroethane		0.21000	6.000
beta-BHC		0.00014	0.066	1,1-Dichloroethylene		0.02500	6.000
delta-BHC		0.02300	0.066	trans-1,2-Dichloroethylene		0.05400	30.000
gamma-BHC (Lindane)		0.00170	0.066	2,4-Dichlorophenol		0.04400	14.000
Bendiocarb		0.05600	1.400	2,6-Dichlorophenol		0.04400	14.000
Benomyl		0.05600	1.400	1,2-Dichloropropane		0.85000	18.000
Benzene		0.14000	10.000	cis-1,3-Dichloropropylene		0.03600	18.000
Benz (a) anthracene		0.05900	3.400	trans-1,3-Dichloropropylene		0.03600	18.000
Benzal chloride		0.05500	6.000	Dieldrin		0.01700	0.130
Benzo (b) fluoranthene		0.11000	6.800	Diethyl phthalate		0.20000	28.000
Benzo (k) fluorathene		0.11000	6.800	p-Dimethylaminoazobenzene		0.13000	NA
Benzo (g,h,i) perylene		0.00550	1.800	2,4-Dimethyl phenol		0.03600	14.000
Benzo (a) pyrene		0.06100	3.400	Dimethyl phthalate		0.04700	28.000
Bromodichloromethane		0.35000	15.000	Di-n-butyl phthalate		0.05700	28.000
Bromoform (Tribromomethane)		0.63000	15.000	1,4-Dinitrobenzene		0.32000	2.300
Bromomethane (methyl bromide)		0.11000	15.000	4,6-Dinitro-o-cresol		0.28000	160.000
4-Bromophenyl phenyl ether		0.05500	15.000	2,4-Dinitrophenol		0.12000	160.000
n-Butanol (n-Butyl alcohol)		5.60000	2.600	2,4-Dinitrotoluene		0.32000	140.000
Butylate		0.04200	1.400	2,6-Dinitrotoluene		0.55000	28.000
Butyl benzyl phthalate		0.01700	28.000	Di-n-octyl phthalate		0.01700	28.000
2-sec-Butyl-4,6-dinitrophenol (Dinoseb)		0.06600	2.500	Di-n-propylnitrosoamine		0.40000	14.000
Carbaryl		0.00600	0.140	Dithiocarbamates (Total)			28.000
Carbendazim		0.05600	1.400	1,4-Dioxane		12.00000	170.000
Carbofuran		0.00600	0.140	Diphenyl amine		0.92000	13.000
Carbofuran phenol		0.05600	1.400	Diphenylnitrosamine		0.92000	13.000
Carbon disulfide		3.80000	4.800 ¹	1,2-Diphenyl hydrazine		0.08700	NA
Carbon tetrachloride		0.05700	6.000	Disulfoton		0.01700	6.200
Carbosulfan		0.02800	1.400	Endosulfan I		0.02300	0.066
Chlordane (alpha & gamma)		0.00330	0.260	Endosulfan II		0.02900	0.130
p-Chloroaniline		0.46000	16	Endosulfan sulfate		0.02900	0.130
Chlorobenzene		0.05700	6.000	Endrin		0.00280	0.130
Chlorobenzilate		0.10000	NA	Endrin aldehyde		0.02500	0.130
2-chloro-1,3-butadiene		0.05700	0.280	EPTC		0.04200	1.400
Chlorodibromomethane		0.05700	15.000	Ethyl acetate		0.34000	33.000
Chloroethane		0.27000	6.000	Ethyl benzene		0.05700	10.000
bis-(2-Chloroethoxy) methane		0.03600	7.200	Ethyl cyanide (Propanenitrile)		0.24000	360.000
bis-(2-Chloroethyl) ether		0.03300	6	Ethyl ether		0.12000	160.000
Chloroform		0.04600	6	bis-(2-Ethylhexyl) phthalate		0.28000	28.000
bis-(2-Chloroisopropyl) ether		0.05500	7.2	Ethyl methacrylate		0.14000	160.000
p-Chloro-m-cresol		0.01800	14.000	Ethylene oxide		0.12000	NA
2-Chloroethyl Vinyl ether		0.06200	NA	Famphur		0.01700	15.000
Chloromethane (methyl chloride)		0.19000	30.000	Fluoranthene		0.06800	3.400
2-Chloronaphthalene		0.05500	5.600	Fluorene		0.05900	3.400
2-Chlorophenol		0.04400	5.700	Formetanate hydrochloride		0.05600	1.400
3-Chloropropylene		0.03600	30.000	Heptachlor		0.00120	0.066
Chrysene		0.05900	3.400	Heptachlor epoxide		0.01600	0.066
m-Cresol		0.77000	5.600	Hexachlorobenzene		0.05500	10.000
o-Cresol		0.11000	5.600	Hexachlorobutadiene		0.05500	5.600
p-Cresol		0.77000	5.600	Hexachlorocyclopentadiene		0.05700	2.400
m-Cumenyl methylcarbamate		0.05600	1.400	Hexachlorodibenzo-furans		0.000063	0.001
Cyclohexanone		0.36000	0.750 ¹	Hexachlorodibenzo-p-dioxins		0.00006	0.001

Clean Earth of North Jersey, Inc. Underlying Hazardous Constituent (UHC) LDR Form

GENERATOR NAME: _____

MANIFEST DOC. NO.: _____

APPROVAL CODE #: _____

CONSTITUENT	HOW MUST CONSISTUENT BE MANAGED	WW (mg/l)	NWW (mg/kg)	CONSTITUENT	HOW MUST CONSISTUENT BE MANAGED	WW (mg/l)	NWW (mg/kg)
Hexachloroethane		0.05500	30.000	Promecarb		0.05600	1.400
Hexachloropropylene		0.03500	30.000	Pronamide		0.09300	1.500
Indeno (1,2,3-c,d) pyrene		0.00550	3.400	Propham		0.05600	1.400
Iodomethane		0.19000	65.000	Propoxur		0.05600	1.400
Isobutanol (Isobutyl Alcohol)		5.60000	170.000	Prosulfocarb		0.04200	1.400
Isodrin		0.02100	0.066	Pyrene		0.06700	8.200
Isosafrole		0.08100	2.600	Pyridine		0.01400	16.000
Kepone		0.00110	0.130	Safrole		0.08100	22.000
Methacrylonitrile		0.24000	84.000	Silvex (2,4,5-TP)		0.72000	7.900
Methanol		5.60000	0.750 ¹	1,2,4,5-Tetrachlorobenzene		0.05500	14.000
Methapyrilene		0.08100	1.500	Tetrachlorodibenzo-furans		0.000063	0.001
Methiocarb		0.05600	1.400	Tetrachlorodibenzo-p-dioxins		0.000063	0.001
Methomyl		0.02800	0.140	1,1,1,2-Tetrachloroethane		0.05700	6.000
Methoxychlor		0.25000	0.180	1,1,2,2-Tetrachloroethane		0.05700	6.000
3-Methylcholanthrene		0.00550	15.000	Tetrachloroethylene		0.05600	6.000
4,4-Methylene-Bis-(2-chloroaniline)		0.50000	30.000	2,3,4,6-Tetrachlorophenol		0.03000	7.400
Methylene Chloride		0.08900	30.000	Thiodicarb		0.01900	1.400
Methyl ethyl ketone		0.28000	36.000	Thiophanate-methyl		0.05600	1.400
Methyl isobutyl ketone		0.14000	33.000	Toluene		0.08000	10.000
Methyl methacrylate		0.14000	160.000	Toxaphene		0.00950	2.600
Methyl methanesulfonate		0.01800	NA	Triallate		0.04200	1.400
Methyl parathion		0.01400	4.600	Tribromomethane/Bromoform		0.06300	15.000
Metolcarb		0.05600	1.400	2,4,6-Tribromophenol		0.03500	7.400
Mexacarbate		0.05600	1.400	1,2,4-Trichlorobenzene		0.05500	19.000
Molinate		0.04200	1.400	1,1,1-Trichloroethane		0.05400	6.000
Naphthalene		0.05900	5.600	1,1,2-Trichloroethane		0.05400	6.000
2-Naphthylamine		0.52000	NA	Trichloroethylene		0.05400	6.000
o-Nitroaniline		0.27000	14.000	Trichloromonofluoromethane		0.02000	30.000
p-Nitroaniline		0.02800	28.000	2,4,5-Trichlorophenol		0.18000	7.400
Nitrobenzene		0.06800	14.000	2,4,6-Trichlorophenol		0.03500	7.400
5-Nitro-o-toluidine		0.32000	28.000	2,4,5-Trichlorophenoxyacetic acid/2,4,5-T		0.07200	7.900
o-Nitrophenol		0.02800	13.000	1,2,3-Trichloropropane		0.85000	30.000
p-Nitrophenol		0.12000	29.000	1,1,2-Trichloro-1,2,2-trifluoroethane		0.05700	30.000
N-Nitrosodiethylamine		0.40000	28.000	Triethylamine		0.08100	1.500
N-Nitrosodimethylamine		0.40000	2.300	Tris(2,3,-dibromopropyl) phosphate		0.11000	0.100
N-Nitroso-di-n-butylamine		0.40000	17.000	Vernolate		0.04200	1.400
N-Nitrosomethylethylamine		0.40000	2.300	Vinyl chloride		0.27000	6.000
N-Nitrosomorpholine		0.40000	2.300	Xylene (sum of o-, m-, and p- isomers)		0.32000	30.000
N-Nitrosopiperidine		0.01300	35.000	Inorganic Constituents			
N-Nitrosopyrrolidine		0.01300	35.000	Cyanides (Total)		1.20000	590.000
Oxamyl		0.05600	0.280	Cyanides (Amenable)		0.86000	30.000
Parathion		0.01400	4.600	Antimony		1.90000	1.150 ¹
PCBs (total) all isomers or Aroclors		0.10000	10.000	Arsenic		1.40000	5.000 ¹
Pebulate		0.04200	1.400	Barium		1.20000	21.000 ¹
Pentachlorobenzene		0.05500	10.000	Beryllium		0.82000	1.220 ¹
Pentachloroethane		0.05500	6.000	Cadmium		0.69000	0.110 ¹
Pentachlorodibenzo-furans		0.000035	0.001	Chromium(Total)		2.77000	0.600 ¹
Pentachlorodibenzo-p-dioxins		0.000063	0.001	Fluoride ²		35.0000	NA
Pentachloronitrobenzene		0.05500	4.800	Lead		0.69000	0.750 ¹
Pentachlorophenol		0.08900	7.400	Mercury (Non WW from retort)		NA	0.200 ¹
Phenacetin		0.08100	16.000	Mercury (All others)		0.15000	0.025 ¹
Phenanthrene		0.05900	5.600	Nickel		3.98000	11.000 ¹
Phenol		0.03900	6.200	Selenium		0.82000	5.700 ¹
Phorate		0.02100	4.600	Silver		0.43000	0.140 ¹
Phthalic acid		0.05500	28.00	Sulfide ²		14.00000	NA
Phthalic anhydride		0.05500	28.000	Thallium		1.40000	0.20 ¹
Physostigmine		0.05600	1.400	Vanadium ²		4.30000	1.600 ¹
Physostigmine salicylate		0.05600	1.400	Zinc ²		2.61000	4.300 ¹

¹These concentrations are expressed in mg/l and are measured through an analysis of TCLP extract; all others measured through a total waste analysis.

²These constituents are not Underlying Hazardous Constituents in characteristic wastes, according to the definition at 268.2(i).

☐ This waste stream contains none of the Underlying Hazardous Constituents (UHC's) listed above or on Page 1, above the UHC's specific treatment standard (UTS) at the point of generation.

The information above was determined by:

☐ Generator's knowledge of the waste
☐ Laboratory analysis

Print Name _____

Signature _____

Date _____

Title _____

Clean Earth of North Jersey, Inc.

115 Jacobus Ave.
South Kearny, NJ 07032
(973) 344-4004

APPROVAL CODE D) _____ B) _____
GENERIC CODE D) _____ B) _____
CUSTOMER # _____
LSR # _____
MASTER WPS _____ YES _____ NO _____
TECHNICAL REP. INITIALS _____
BROKER NAME (If Applicable) _____
APPROVAL DATE _____

ASBESTOS WASTE MATERIAL PROFILE SHEET

A. OWNER/OPERATOR INFORMATION

GENERATOR'S NAME _____
MAILING ADDRESS _____
WASTE PICKUP ADDRESS _____
TECH CONTACT _____ PHONE _____
PROCESS GENERATING WASTE _____

B: WASTE DESCRIPTION

- 1) Is the asbestos containing material mixed with any hazardous waste?
Yes _____ No _____ If yes explain: _____
- 2) Is the asbestos containing material mixed with any state regulated waste?
Yes _____ No _____ If yes explain: _____
- 3) Is the asbestos containing material mixed with any Polychlorinated Biphenyls?
Yes _____ No _____ If yes explain: _____
- 4) Is the asbestos containing material mixed with any radioactive or toxic substances?
Yes _____ No _____ If yes explain: _____
- 5) Is the asbestos containing material friable _____ non-friable _____ both _____
- 6) If both friable and non-friable list % friable _____ %non-friable _____.
- 7) What is the total quantity of regulated asbestos containing material in yards _____
- 8) Is the regulated asbestos containing material packaged properly packaged for transport and disposal (i.e. double bagged with 6 mil poly bags and wetted)?
Yes _____ No _____ If no explain: _____

C: NOTIFICATIONS:

- 1) Has the owner or operator supplied the USEPA, NJDEP and other applicable regulatory agencies with the proper notifications? Yes _____ No _____
- 2) If no, is the regulated asbestos containing material from a renovation project where the amount is less than 260 linear feet or at least 160 square feet on other components, or less than 35 cubic feet of facility components where the length or area could not be measured previously? Yes _____ No _____

K. SPECIAL HANDLING COMMENTS

L. OFFICIAL USE ONLY

M. APPROVAL

SAFETY _____
ENVIRON _____

D: WARRANTY

I hereby warrant that the material transferred to Clean Earth of North Jersey, Inc. for consolidation and transfer is not contaminated with any hazardous waste or toxic substances and hereby agree to indemnify and hold Clean Earth of North Jersey, Inc. harmless from any costs, damages or other liabilities resulting from breach of this warranty or any other terms and conditions of this Asbestos Waste Material Profile Sheet. The information on this Asbestos Waste Material Profile Sheet may have been prepared by other individuals. By signing below I certify that all information, including any attached information is complete and is an accurate representation the waste and its known constituents

Date
Faxables/cenjaws.doc 12/2001

Print Name/Title

Owner or Operator Signature

NEW JERSEY DEPARTMENT OF ENVIRONMENTAL PROTECTION
DIVISION OF SOLID AND HAZARDOUS WASTE

WASTE ORIGIN AND DISPOSAL FORM

1. A. TRANSPORTER'S
DEP REGISTERED NAME: _____ B. PHONE NO. _____

2. TRANSPORTER'S DEP NUMBERS:

	DEP#	DECAL #	VEHICLE PLATE NOS. & STATE INITIAL
VEHICLE:	_____	_____	_____
TRAILER:	_____	_____	_____
CONTAINER:	_____	_____	_____

3. A. WASTE TYPE(S): (Please circle)
10 13 13C* 23 25 27 27A** 27I***
Other: _____

B. SOURCE SEPERATED RECYCLABLES: (Please circle)
Paper, Corrugated, Glass, Metal, Plastics, Concrete Products,
Asphalt, Wood, Yard Material,
Other: (Specify) _____

*Construction/Demolition Debris
Asbestos *Incinerator Ash

4. WASTE ORIGIN STATE (Please Circle) NJ PA NY DE MD Other: (Specify) _____

5. MUNICIPALITY (IES) _____ COUNTY (IES) _____ % OF TOTAL LOAD _____

6. WEIGHING FACILITY: Clean Earth of North Jersey, Inc. ID #: 01-000311-01

(if applicable) CUBIC YARDS GROSS WEIGHT NEI WEIGHT

(Completed by Transporter)

(Completed by Weighmaster)

(Completed by Weighmaster
for in-State Disposal Only)

FINAL DISPOSAL FACILITY: _____ STATE: _____ ID#: _____

7. TRANSPORTER'S CERTIFICATION: I certify that the information provided on this form is true to the best of my knowledge

Print Driver/Transporter's Name

Signature

Date

8. WEIGHMASTER'S CERTIFICATION: I certify that this form has been completed by the registered transporter identified above, and the gross weight figure is true and accurate for loads going out of state.

(Weighmaster's Signature (if applicable))

Date

9. FINAL DISPOSAL FACILITY OPERATOR CERTIFICATION (In-State Disposal Only): I certify that this form has been completed by the registered transporter identified above, and that the waste as identified by the transporter is permitted to be disposed of at this facility

Operator's Signature

Date

Time

Manifest/BL # _____

Revenue Ticket # _____



115 Jacobus Ave., So. Kearny, NJ 07032 201-344-4004

LABORATORY SERVICE REQUEST

Generator		Outside Laboratory <input type="checkbox"/> Yes <input type="checkbox"/> No	SPECIFY ANALYSES	QTY	PRICE
Location		Special Analytical Request/Comments	<input type="checkbox"/> Approval Analysis		
Customer			<input type="checkbox"/> Metals (EP-TOX/TCLP/TOTAL)		
Customer No.			<input type="checkbox"/> Pesticides/Herbicides (EP-TOX/TCLP/TOTAL)		
Tech Contact			<input type="checkbox"/> PCB'S		
Address			<input type="checkbox"/> BTU/Chlorides		
			<input type="checkbox"/> Total Organic Carbon		
Charge Account #			<input type="checkbox"/> T.P.H.C.		
P.O. #			<input type="checkbox"/> Cyanide (Quantitative)		
Revenue Tkt #			<input type="checkbox"/> Sulfide (Quantitative)		
Typed Copy Required? <input type="checkbox"/> Yes <input type="checkbox"/> No			<input type="checkbox"/> Priority Pollutants (GC/MS)		
Sample Location in Lab		<input type="checkbox"/> Other (Specify)			
Date/Time Submitted to Lab					
				TOTAL PRICE	

Certification Of Representative Sample

1. Sampling Method:

I have obtained a representative sample of the waste according to sampling methods specified in 40CFR261 Appendix 1 or by using a method equivalent to the sampling methods described in 40CFR261 Appendix 1.

2. Sample source (e.g. drum, tank, vat, pit, lagoon, roll-off)

3. I certify that the sample container complies with all regulatory packaging requirements.

4. Print Sampler's Name: _____

5. Sampler's Signature: _____

6. Sampler's Employer: _____
(If S&W see below)

7. In cases where S&W Waste, Inc. obtains the sample, one of the generator's employees must be present to direct the particular source to be sampled and to witness the sampling.

7a. Witness's Signature: _____

7b. Witness's Employer: _____

Date of Sampling _____

Time of Sampling _____

Chain Of Custody Record

SAMPLE I.D.#		COMP	GRAB	SAMPLE DESCRIPTION & SIZE		SHIPPED VIA	
RELINQUISHED BY (Signature)	DATE	AGENT OF:		REC'D BY SIGNATURE	DATE	AGENT OF:	
PRINTED NAME	TIME			PRINTED NAME	TIME		
RELINQUISHED BY (Signature)	DATE	REC'D FOR LAB BY : (Signature)		DATE	REMARKS		
PRINTED NAME	TIME	PRINTED NAME		TIME	Sampling Cond: Temp _____ °F Weather: (in/outdoors)		

LABORATORY ANALYSES



LSR NO.

DATE/TIME

GENERATOR

CUSTOMER #

CUSTOMER

ADDRESS

LOCATION

TECH CONTACT

TECH REP.

RETURN REPORT TO:

Check One: Typed Copy Required?

☐ YES ☐ NO

ANALYSES

☐ S & W LAB ☐ CONTRACT LAB

SPECIAL ANALYTICAL REQUESTS

CLIENT SAMPLE IDENTIFICATION	SHIPPING NAME WASTE TYPE	SAMPLING VISUAL & COMMENTS	LAB VISUAL

PAINT FILTER TEST	FLASH POINT (°F)	IGN	BTU TOP/BOTTOM	%C / CI SPOT / TOX	SPECIFIC GRAVITY	MISCIBILITY		pH	T.O.C (ppm)	OXIDIZER TEST	DOT OXIDIZER TEST	CHEMICAL COMPATABILITY A-B-KD-S
						SOLVENT	WATER					
LIQUID			GAL								POS LOW MED HIGH	
SOLID			LB								NEG	

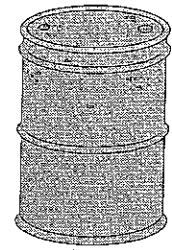
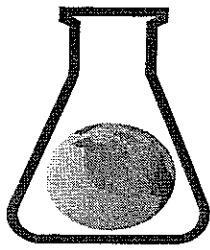
REACTIVITY			TOTAL SULFIDES	KARL FISCHER WATER (%)	B & W CENTRIFUGING	ORGANIC PEROXIDE SPOT TEST	LIQUEFACTION	LATEX TEST	ALUMINUM TEST	% ASH	PCB'S (ppm)	
WATER	SULFIDE TEST	CYANIDE TEST			TOP	POS	NEG	POS	NEG	PASS	FAIL	
					MIDDLE							
					BOTTOM							

METALS			<input type="checkbox"/> RCRA <input type="checkbox"/> TOTAL <input type="checkbox"/> TCLP <input type="checkbox"/> VOL WEIGHTED AVERAGE		<input type="checkbox"/> Mg/L <input type="checkbox"/> Mg/Kg	LAB COMMENTS
ANTIMONY	CHROMIUM	SELENIUM				
ARSENIC	COPPER	SILVER				
BARIUM	LEAD	THALLIUM				
BERYLLIUM	MERCURY	ZINC				
CADMIUM	NICKEL					

DATE	TIME	COMPLETED	ANALYST	(PRINT)	(INITIAL)	APPROVED BY

Clean Earth of North Jersey, Inc.

**EPA Waste Types Accepted at
Clean Earth of North Jersey, Inc.**



EPA Waste Types

Accepted at the Clean Earth of North Jersey, Inc. Facility

FUEL BLENDING, LIQUIDS:

D001, D002, D004 through D011, D018 through D043, F001 through F009, F032, F034, F035, F037, F038, F039, K001, K015 through K020, K022, K023, K024, K027 through K030, K036, K048 through K052, K085, K086, K093, K095, K096, K104, K105, K169 through K172, U001 through U012, U014 through U026, U028 through U031, U034 through U039, U041 through U053, U055 through U064, U066 through U095, U097 through U099, U105 through U133, U136, U137, U140 through U143, U147 through U154, U157 through U159, U161 through U166, U168 through U174, U177, U179 through U186, U188, U190 through U194, U197, U200 through U203, U206 through U213, U218 through U223, U225 through U228, U230 through U233, U237, U239, U240, U242, U247.

NJDEP Waste Types: ID72.

STABILIZATION:

D002, D004 through D011, D018 through D043, F001, F002, F006, F007 through F009, F019, F032, F034, F035, F037, F038, F039, K001 through K008, K015 through K020, K024, K027, K028, K030, K048 through K052, K060, K061, K069, K071, K073, K084, K086, K087, K095, K096, K101, K102, K106, K169 through K172, U032, U204.

All F, K, U or P numbers above that do not exhibit the characteristic of ignitability.

NJDEP Waste Types: ID27, ID72.

EPA Waste Types

WASTEWATER BLENDING:

D001, D002, D004 through D011, D018 through D043, F006, F019, F032, F034, F035, F037, F038, F039, K050, K062, K086, K100, K104, K105, K169 through K172. Aqueous mixtures that qualify as F, K, P or U waste codes that the permittee is authorized to handle.

NJDEP Waste Types: ID72.

LAB PACKS:

D001 through D043, F001 through F006, F019, F032, F034, F035, F037, F038, F039, K001 through k008, K015 through K020, K022, K023, K024, K027 through K030, K035, K048 through K052, K060 through K069, K071, K073, K084 through K087, K093, K095, K096, K100 through K102, K104 through K106, K169 through K172, P002, P003, P007, P008, P010 through P018, P021 through P024, P026 through P030, P034, P040, P041, P044, P054, P064, P066 through P070, P077, P081, P087, P089, P092, P093, P097, P102 through P108, P110, P111, P113 through P115, P118, P119, P123, U001 through U012, U014 through U026, U028 through U032, U034 through U039, U041 through U049, U051 through U053, U055 through U064, U066 through U095, U097 through U099, U101 through U103, U105 through U134, U136 through U154, U157 through U159, U161 through U166, U168 through U174, U176 through U185, U188 through U194, U197, U200 through U223, U225 through U228, U230 through U233, U235, U237 through U240, U242 through U244, U247.

NJDEP Waste Types: ID27, ID72.

EPA Waste Types

FUEL BLENDING, SOLIDS:

D001, D002, D004 through D011, D018 through D043, F001 through F005, F019, F024, F025, F028, F032, F034, F035, F037, F038, F039, K001 through K011, K013 through K052, K060 through K062, K064, K065, K066, K071, K073, K083 through K087, K088, K090, K093 through K106, K111 through K118, K123 through K126, K131, K132, K136, K169 through K172, P001 through P018, P020 through P024, P026 through P031, P033, P034, P036 through P051, P054, P057 through P060, P062 through P078, P081, P082, P084, P085, P087, P088, P089, P092 through P099, P101 through P116, P118 through P123, U001, U002, U010, U011, U012, U014 through U039, U041 through U053, U055 through U099, U101 through U104, U105 through U138, U140 through U174, U176 through U194, U196, U197, U200 through U211, U213 through U223, U225 through U228, U234 through U240, U243, U244, U246 through U249, U328, U353, U359.
NJDEP Waste Types: ID27, ID72.

Partial listing for major activities.
For complete list refer to Facility Permit.

Clean Earth of North Jersey, Inc.

Facility Permits

Clean Earth, Inc. Operating Facilities Regulatory Permit Information						
Facility Name	Permit Description	Permit Number	Issuing Agency ¹	Regulatory Contacts		Permit Expiration Date
				Name	Phone Number	
Clean Earth of North Jersey, Inc. 115 Jacobus Avenue South Kearny, NJ 07032	Hazardous Waste Facility Permit	HWP050001	NJDEP	Zafar Billah or Robert Confer	(609) 292-9880	August 18, 2004 (a)
	Waterfront Development Permit (Rail line extension; Concrete Pad Construction)			Robert B. Piel NJDEP		
	Stormwater Discharge Permit (NJPDES)	NJ0121525	NJDEP	John Ashton	(609) 633-7021	December 31, 2014
	New Jersey Hazardous Waste Transporter Registration	HW DEP# H03002	NJDEP	Betty Fink, NJDEP	(609) 292-7081	June 30, 2011
	Hazardous Materials Certificate of Registration	Registration #072808 550 001QS	USDOT		(202) 366-4109	June 30, 2011
	State of New Jersey Laboratory Certification	Certification ID# 09397	NJDEP	Joseph Aiello	(609) 292-3250	June 30, 2011
	NJDEP Certificate of Public Convenience & Necessity - Transporter	SW2447	NJDEP	Mike DeTalvo	(609) 984-2080	Issued April 27, 2004
	NJDEP Certificate of Public Convenience & Necessity - Facility	SW9082	NJDEP	Mike DeTalvo	(609) 984-2080	Issued June 18, 2007
	Storage Tank	960001	NJDEP	Brian Leary or Joel Leon	609-777-0416 609-984-3019	November 22, 2012
	Storage Tank	960002	NJDEP	Brian Leary or Joel Leon	609-777-0416 609-984-3019	November 22, 2012
	Storage Tank	960003	NJDEP	Brian Leary or Joel Leon	609-777-0416 609-984-3019	November 22, 2012
	ST-04	960004	NJDEP	Joel Leon	609-984-3019	March 14, 2014

Clean Earth, Inc. Operating Facilities Regulatory Permit Information						
Facility Name	Permit Description	Permit Number	Issuing Agency ¹	Regulatory Contacts		Permit Expiration Date
				Name	Phone Number	
	ST-05	960005	NJDEP	Brian Leary or Joel Leon	609-777-0416 609-984-3019	March 14, 2014
	Sludge/Liquid	960006	NJDEP	Brian Leary or Joel Leon	609-777-0416 609-984-3019	July 8, 2011
	Sludge/Liquid	960007	NJDEP	Brian Leary or Joel Leon	609-777-0416 609-984-3019	July 18, 2011
	Storage Tank	960009	NJDEP	Brian Leary or Joel Leon	609-777-0416 609-984-3019	May 11, 2015
	Storage Tank	960010	NJDEP	Brian Leary or Joel Leon	609-777-0416 609-984-3019	May 11, 2015
	Storage Tank	960011	NJDEP	Brian Leary or Joel Leon	609-777-0416 609-984-3019	May 11, 2015
	Storage Tank	960012	NJDEP	Brian Leary or Joel Leon	609-777-0416 609-984-3019	May 11, 2015
	Storage Tank	960013	NJDEP	Brian Leary or Joel Leon	609-777-0416 609-984-3019	May 11, 2015
	Storage Tank	960014	NJDEP	Brian Leary or Joel Leon	609-777-0416 609-984-3019	May 11, 2015
	DBA - Add Equip	960015	NJDEP	Brian Leary or Joel Leon	609-777-0416 609-984-3019	May 11, 2015
	Storage Tank	960016	NJDEP	Brian Leary or Joel Leon	609-777-0416 609-984-3019	May 11, 2015
	Storage Tank	960017	NJDEP	Brian Leary or Joel Leon	609-777-0416 609-984-3019	December 22, 2010
	Containment Unit	090002	NJDEP	Brian Leary or Joel Leon	609-777-0416 609-984-3019	April 4, 2015
		Storage Silo Air Permit Building E-3	GEN070001	NJDEP	Joel Leon	609-984-3019
Storage Silo Air Permit Building - E-4		GEN070002	NJDEP	Brian Leary or Joel Leon	609-777-0416 609-984-3019	December 18, 2012
DDS, Conveyors 1,2 and 3, Hopper		PCP020001	NJDEP	Brian Leary or Joel Leon	609-777-0416 609-984-3019	November 12, 2012
¹ Agency Abbreviations - NJDEP New Jersey Department of Environmental Protection - USDOT United States Department of Transportation (a) Permit in effect while under appeal.						



State of New Jersey

DEPARTMENT OF ENVIRONMENTAL PROTECTION

JON S. CORZINE
Governor

LISA P. JACKSON
Commissioner

Solid & Hazardous Waste Management Program

P.O. Box 414

Trenton, NJ 08625-0414

Tel. No. (609) 984-5950

Fax. No. (609) 633-9839

<http://www.state.nj.us/dep/dshw>

Solid and Hazardous Waste Facility Permit

Under the provisions of N.J.S.A. 13:1E-1 et seq. known as the Solid Waste Management Act, this permit is hereby issued to:

CLEAN EARTH OF NORTH JERSEY INC

105 Jacobus Ave

Kearny, New Jersey 07032

For the Purpose of Operating a:

Solid and Hazardous Waste Treatment, Storage and Transfer
Facility

Lot & Block Nos:

14,14A, 289

In the Municipality of:

Kearny Town

County:

Hudson

Under Facility Permit No.:

HWP050002

EPA ID No.:

NJD991291105

This permit is subject to compliance with all conditions specified herein and all regulations promulgated by the Department of Environmental Protection.

This permit shall not prejudice any claim the State may have to riparian land, nor does it allow the permittee to fill or alter or allow to be filled or altered in any way, lands that are deemed to be riparian, wetlands, stream encroachment areas or flood plains, or that are within the Coastal Area Facility Review Act (CAFRA) zone or are subject to the Pinelands Protection Act of 1979, nor shall it allow the discharge of pollutants to waters of this State without prior acquisition of the necessary grants, permits, or approvals from the Department of Environmental Protection or the U.S. Environmental Protection Agency.

July 18, 1994

Issuance Date

A handwritten signature in cursive script, reading "Anthony Fontana".

Anthony Fontana, Chief

Bureau of Solid and Hazardous Waste Permitting - North

October 23, 2006

Latest Modification Date

August 18, 2004

Expiration Date



State of New Jersey

Richard J. Codey
Acting Governor

Department of Environmental Protection
Division of Solid and Hazardous Waste
401 East State Street
P.O. Box 414
Trenton, New Jersey 08625-0414
Tel. # (609) 292-9880
Fax. # (609)-633-9839
<http://www.state.nj.us/dep/dshw/>

Bradley M. Campbell
Commissioner

August 1, 2005

Robert Fixter
President
Clean Earth of North Jersey, Inc.
115 Jacobus Avenue
Kearny, New Jersey 07032

Re: Continuation of Expiring Permit, Clean Earth of North Jersey, Inc., Kearny,
Hudson County, USEPA ID No. NJD 991 291 105, NJ Hazardous Waste Facility
Permit No.: 0907N1HP14

Dear Mr. Fixter:

The purpose of this letter is to clarify the current status of Hazardous Waste Facility Permit No. 0907N1HP14 issued to Clean Earth of North Jersey, Inc. (CENJ) for the above referenced facility.

The current hazardous waste facility permit for the CENJ facility lists an expiration date of August 18, 2004. However, CENJ has submitted an application for renewal of the hazardous waste facility permit that is currently under review by the Division. Therefore, Hazardous Waste Facility Permit No. 0907N1HP14, and any subsequent modifications, shall remain in effect and enforceable until such time as the Division makes a final determination regarding the renewal application.

Should you have any questions regarding this matter, please call John Scott of my staff at 609-984-2040 or e-mail him at john.scott@dep.state.nj.us.

Very truly yours,

Anthony Fontana, Chief
Bureau of Hazardous Waste and Transfer Facilities

C: Barry Toimick, USEPA, Region II
Jeffery Sterling, BHWCE-Northern
Document: Continuation of permit



June 12, 2007

Robert Fixter
President
Clean Earth of North Jersey, Inc.
105 Jacobus Avenue
Kearny, New Jersey 07032

RE: Status of Submission of Hazardous Waste Storage, Treatment and Transfer Facility Permit Renewal Application for Clean Earth of North Jersey, Inc. and the Administrative Continuation of Existing Permit Conditions

Dear Bob,

Pursuant to our discussions, I am sending you this letter to provide you with the current status of the Hazardous Waste Storage, Treatment and Transfer Facility Permit for Clean Earth of North Jersey, Inc. ("CENJ") site.

On June 23, 2004, the New Jersey Department of Environmental Protection ("NJDEP") issued an extension for the submission of the permit renewal application until August 31, 2004, at our request, to allow us to complete the final negotiations with the Town of Kearny and Hudson County Solid Waste Authority regarding certain open issues related to the management of solid wastes at the facility. These issues included the settlement of historical host municipality fees and the planned modification of the facility under the County Solid Waste Management Plan to revise the design and construction of the proposed MRF/Transfer unit at the site.

Although CENJ has not concluded its final negotiations regarding these solid waste issues related to the facility's operations with the Town of Kearny, CENJ has proceeded with the submission of the Solid and Hazardous Waste Facility renewal application.

Based on our discussions with Mr. Anthony Fontana, Chief, Bureau of Hazardous Waste and Transfer Facilities, (and indicated in the August 1, 2005 letter from the Department), the facility's existing Hazardous Waste Permit and operating conditions are concurrently administratively continued in accordance with the provisions of 40 CFR 270.51(d), which are incorporated by reference under N.J.A.C. 7:26G Chapter 8. Consequently, the facility may continue all existing operations, uninterrupted, until the permit renewal application is acted upon by the Department under a final decision to reissue the permit, issue the permit with modifications, or deny the application.

Mr. Robert Fixter

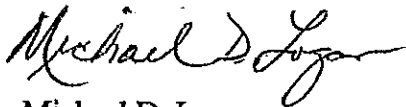
June 12, 2007

Page 2

Moreover, CENJ has received three separate approvals from the Department, issued 1/8/06, 4/5/06 and 10/25/06, that has allowed the Facility to proceed with several significant changes and upgrades to the plant's operating design and waste management/environmental control capabilities. CENJ has been working in concert with the Department to incorporate these changes to the Facility renewal application. As a result, these changes have caused additional delays in receiving the Final Approval of the Facility's renewed permits; however, the State is in agreement with the Facility that this open renewal process is the best course of action for all parties to ensure that the final permit will be both reflective of the current Facility configuration and that the overriding environmental benefits to the Facility improvements that were implemented far exceed the possible administrative concerns over extending the expired permit in the manner described above.

If you have any further questions or comments related to this matter, please do not hesitate to contact me.

Sincerely,



Michael D. Logan

Vice President, Environment Services

Compliance Plus Services, Inc.

Corporate Compliance Consultant to the Clean Earth Companies

[Skip Navigation](#)[njdep home](#) | [about dep](#) | [index by topic](#) | [programs/units](#) | [dep online](#)[My Workspace](#) | [User Profile](#) | [Certifications](#) | [Payments](#) | [Documents and Forms](#) | [Permit Folder](#)

Version: 4.8

10610

Currently logged in: Cheryl Coffee (CCOFFEE14) CLEAN EARTH OF NORTH JERSEY INC











[Help](#) | [Logout](#)**PERMIT/ CERTIFICATE FOLDER**

- 1 - Select Facility
- 2 - Certificate Folder
- 3 - View Certificate

The Permit/Certificate Folder screen contains a list of all permits (General and Preconstruction) at the facility and the equipment included in those permits.

Please click on the certificate icon to view the complete permit/certificate.

<u>Permit Class</u>	<u>Activity Number</u>	<u>Permit Type</u>	<u>NJID#</u>	<u>Facility Designation</u>	<u>Expiration Date</u>	<u>Document Status</u>	<u>Certificate</u>
General Permit	070001	(GP-001) Solid Receiving and Storage	E-3	Storage Silo	02/22/2012	Approved	
General Permit	070002	(GP-001) Solid Receiving and Storage	E-4	Storage Silo	12/18/2012	Approved	
Preconstruction Permit	020001	Modification	E-2001	DDS	11/12/2012	Renewed	
			E-2002	Conveyor-1			
			E-2003	Conveyor-2			
			E-2004	Conveyor-3			
			E-2005	Hopper-1			
Preconstruction Permit	090002	Amendment	E-1001	WSS-1	04/04/2015	Renewed	
			E-1002	WSS-2			
			E-1003	WSS-3			
			E-1004	WSS-4			
			E-1005	Screener			
			E-1006	Blower			
			E-1007	Ore Sizing			
			E-1008	Ore Transfer			
Preconstruction Permit	960001	Construction of New Source	E-201	STORAGE TANK	11/22/2012	Renewed	
Preconstruction Permit	960002	Construction of New Source	E-301	STORAGE TANK	11/22/2012	Renewed	
Clicking a column title will sort the table by that column.							

<u>Permit Class</u>	<u>Activity Number</u>	<u>Permit Type</u>	<u>NJID#</u>	<u>Facility Designation</u>	<u>Expiration Date</u>	<u>Document Status</u>	<u>Certificate</u>
Preconstruction Permit	960003	Construction of New Source	E-401	STORAGE TANK	11/22/2012	Renewed	
Preconstruction Permit	960004	Construction of New Source	E-601	ST-04	03/14/2014	Renewed	
Preconstruction Permit	960005	Construction of New Source	E-701	ST-05	03/14/2014	Renewed	
Preconstruction Permit	960009	Construction of New Source	E-1101	STORAGE TANK	05/11/2015	Renewed	
Preconstruction Permit	960012	Construction of New Source	E-1401	STORAGE TANK	05/11/2015	Renewed	
Preconstruction Permit	960013	Construction of New Source	E-1501	STORAGE TANK	05/11/2015	Renewed	
Preconstruction Permit	960014	Construction of New Source	E-1601	STORAGE TANK	05/11/2015	Renewed	
Preconstruction Permit	960015	Construction of New Source	E-1701	DBA-AddEquip	05/11/2015	Renewed	
Preconstruction Permit	960016	Construction of New Source	E-1801	STORAGE TANK	05/11/2015	Renewed	
Preconstruction Permit	960017	Construction of New Source	E-1901	STORAGE TANK	12/22/2010	Renewed	
Clicking a column title will sort the table by that column.							

* The renewal fee has been paid for this permit; however, the permit is pending review.

** Permit Certificates are not officially renewed until 12:01 am of the day of the original expiration date.

[contact dep](#) | [privacy notice](#) | [legal statement](#) | [accessibility statement](#) 

department: [njdep home](#) | [about dep](#) | [index by topic](#) | [programs/units](#) | [dep online](#)
 statewide: [nj home](#) | [citizen](#) | [business](#) | [government](#) | [services A to Z](#) | [departments](#) | [search](#)

Copyright © State of New Jersey, 1996-2004
 Department of Environmental Protection
 P. O. Box 402
 Trenton, NJ 08625-0402

Last Updated: June 24, 2004

Certificate Of Registration

Valid January 1, 2006 through December 31, 2010

Hudson Regional Health Commission

595 County Avenue, Building One

Secaucus, New Jersey 07094

(201) 223-1133 / Fax (201) 223-0122

Facility ID: 0700911

Facility Name: Clean Earth of North Jersey, Inc

Facility Address: 115 Jacobus Avenue
Kearny New Jersey

Category 1 Fuel Burners: 0

Gasoline/10,000: 0

Category 2 Fuel Burners: 0

Gasoline/40,000 : 0


A Sources: 0

Gasoline/40,000+: 0

Other Sources: 11

Incinerators: 0

Robert Ferraiuolo, Director



**UNITED STATES OF AMERICA
DEPARTMENT OF TRANSPORTATION
PIPELINE AND HAZARDOUS MATERIALS SAFETY ADMINISTRATION**



**HAZARDOUS MATERIALS
CERTIFICATE OF REGISTRATION
FOR REGISTRATION YEAR(S) 2008-2011**

Registrant: CLEAN EARTH OF NORTH JERSEY
Attn: ROBERT FIXTER
115 JACOBUS AVE
S KEARNY, NJ 07032

This certifies that the registrant is registered with the U.S. Department of Transportation as required by 49 CFR Part 107, Subpart G.

This certificate is issued under the authority of 49 U.S.C. 5108. It is unlawful to alter or falsify this document.

Reg. No: 072808 550 001QS Issued: 07/28/2008 Expires: 06/30/2011

Record Keeping Requirements for the Registration Program

The following must be maintained at the principal place of business for a period of three years from the date of issuance of this Certificate of Registration:

- (1) A copy of the registration statement filed with PHMSA; and
- (2) This Certificate of Registration

Each person subject to the registration requirement must furnish that person's Certificate of Registration (or a copy) and all other records and information pertaining to the information contained in the registration statement to an authorized representative or special agent of the U. S. Department of Transportation upon request.

Each motor carrier (private or for-hire) and each vessel operator subject to the registration requirement must keep a copy of the current Certificate of Registration or another document bearing the registration number identified as the "U.S. DOT Hazmat Reg. No." in each truck and truck tractor or vessel (trailers and semi-trailers not included) used to transport hazardous materials subject to the registration requirement. The Certificate of Registration or document bearing the registration number must be made available, upon request, to enforcement personnel.

For information, contact the Hazardous Materials Registration Manager, PHH-62, Pipeline and Hazardous Materials Safety Administration, U.S. Department of Transportation, 1200 New Jersey Avenue, SE, Washington, DC 20590, telephone (202) 366-4109.



STATE OF NEW JERSEY
COUNTY ENVIRONMENTAL AND WASTE ENFORCEMENT
Bureau of Solid Waste Compliance & Enforcement
PO BOX 407
Trenton, NJ 08625-0407
(609)-292-7081

CLEAN EARTH OF NJ
115 JACOBUS AVENUE
SOUTH KEARNY NJ 07032

Expiration Date : 06/30/11

Decal No. : 615

Vehicle ID# : S03002AAD CO

License # : NTA1NER

Certified : CLEAN EARTH OF NJ
115 JACOBUS AVENUE
SOUTH KEARNY NJ 07032

DEP No. : 03002 Type : 3

Transporter Vehicle Registration Card

THIS CARD MUST BE CARRIED IN THE CAB OF THE VEHICLE AT ALL TIMES.

HAZARDOUS

STATE OF NEW JERSEY
DEPARTMENT OF ENVIRONMENTAL PROTECTION
HAZARDOUS WASTE TRANSPORTER

LICENSED

00615

EXPIRES JUNE 30, 2011

STATE OF NEW JERSEY
DEPARTMENT OF ENVIRONMENTAL PROTECTION
SOLID WASTE TRANSPORTER

CONTAINER ONLY

15904



UNITED STATES ENVIRONMENTAL PROTECTION AGENCY
WASHINGTON, D.C. 20460

AUG 5 1993

OFFICE OF
PREVENTION, PESTICIDES
AND TOXIC SUBSTANCES

Mr. Robert Fixter
Vice President of Compliance
S&W Waste, Inc.
115 Jacobus Avenue
S. Kearny, New Jersey 07032

Reference: Notification Form Dated June 29, 1993

Dear Mr. Fixter:

This is to notify you that the Environmental Protection Agency has received your request to either modify the entry or remove the facility from the PCB Activity Database System (PADS). EPA has taken the following action (as indicated by an "X") to respond to your request:

 X The modification you requested has been made; this is your confirmation. (Reference # 5013).

 In order to modify the database as you requested, a new form must be completed, signed, and submitted to this office. (Reference #)

A Notification of PCB Activity Form has been enclosed; upon completion, it should be mailed to:

Operations Branch
Office of Pollution Prevention and Toxics (TS-798)
US Environmental Protection Agency
401 M Street, SW
Washington, DC 20460

 A code has been inserted in the database to indicate that your company notified and subsequently requested withdrawal of the notification. This letter serves as your confirmation. (Reference #)

 Other (explanation provided).



Recycled paper is
preferred. Please use paper that contains
at least 75% recycled fiber.

If you have any questions regarding the PCB Waste Handlers' database, please contact Toni White at (202) 260-3933.

Sincerely,

A handwritten signature in black ink, appearing to read "Tony Bahey", with a large, sweeping horizontal stroke underneath the name.

Tony Bahey, Chief
Operations Branch


 United States Environmental Protection Agency
 Washington, DC 20460

Notification of PCB Activity

 Form Approved
 OMB No. 2070-0112
 Approval expires 12-31-92

No information on this form may be claimed as TSCA CBI.

Return To:

 Chemical Regulation Branch
 Office of Toxic Substances TS-798
 U.S. Environmental Protection Agency
 401 M St. SW
 Washington, DC 20460

For Official Use Only

TSCA PCB ID Number

1. Name of Facility

S & W Waste, Inc.

Name of Owner of Facility

William DiStefano

 2. EPA Identification Number
 (If already assigned under RCRA)

NJD991291105

3. Facility Mailing Address (Street or PO Box, City, State, & ZIP Code)

 115 Jacobus Ave.
 S. Kearny N.J. 07032

4. Location of Facility (No. & Street, City, State, & ZIP Code)

 105 Jacobus Ave.
 S. Kearny NJ 07032

5. Installation Contact (Name and Title)

Robert F. Fier

V.P. of Compliance

Telephone Number (Area Code and Number)

(201) 344-4004

6. Type of PCB Activity (Mark "X" in appropriate box. See instructions.)


 A. Generator with on-site
 storage facility


B. Storage (Commercial)



C. Transporter



D. Permitted Disposer

7. Certification

Under civil and criminal penalties of law for the making or submission of false or fraudulent statements or representations (18 U.S.C. 1001 and 15 U.S.C. 2615), I certify that the information contained in or accompanying this document is true, accurate, and complete. As to the identified section(s) of this document for which I cannot personally verify truth and accuracy, I certify as the company official having supervisory responsibility for the persons who, acting under my direct instructions, made the verification that this information is true, accurate, and complete.

8. Signature

Name and Official Title (Type or print)

Robert Fier V.P. of Compliance

Date Signed

6/29/93

Paperwork Reduction Act Notice

The public reporting burden for this collection of information is estimated to average 1.5 hours per response. This estimate includes time for reviewing instructions, searching existing data sources, gathering and maintaining the needed data, and completing and reviewing the collection of information. Send comments regarding the burden estimate or any other aspect of this collection of information to the Chief, Information Policy Branch (PM-223), US Environmental Protection Agency, 401 M Street, SW, Washington, DC 20460, and to the Office of Information and Regulatory Affairs, Office of Management and Budget, Washington, DC 20503, marked ATTENTION: Desk Officer for EPA.



ACKNOWLEDGEMENT OF NOTIFICATION OF HAZARDOUS WASTE ACTIVITY

09/12/2003

This is to acknowledge that you have filed a Notification of Hazardous Waste Activity for the installation located at the address shown in the box below to comply with Section 3010 of the Resource Conservation and Recovery Act (RCRA). Your EPA Identification Number for that installation appears in the box below. The EPA Identification Number must be included on all shipping manifests for transporting hazardous wastes; on all Annual Reports that generators of hazardous waste, and owners and operators of hazardous waste treatment, storage and disposal facilities must file with EPA; on all applications for a Federal Hazardous Waste Permit; and other hazardous waste management reports and documents required under Subtitle C of RCRA.

EPA I.D. NUMBER →	NJD991291105
INSTALLATION NAME →	CLEAN EARTH OF NORTH JERSEY INC
INSTALLATION ADDRESS →	105 JACOBUS AVE KEARNY, NJ 07032
MAILING ADDRESS →	105 JACOBUS AVE KEARNY, NJ 07032

EPA Form 8700-12AB (4-80)

USEPA - REGION 2
RCRA Programs Branch
290 Broadway, 22nd Floor
New York, NY 10007-1866

ATTN: RCRA NOTIFICATIONS
Tel : (212) 637-4106
Fax: (212) 637-3056

TO: CLEAN EARTH OF NORTH JERSEY INC
or Current Occupant
ATTN: ROBERT FIXTER
105 JACOBUS AVE
KEARNY, NJ, 07032



NEW JERSEY POLLUTANT DISCHARGE ELIMINATION SYSTEM

The New Jersey Department of Environmental Protection hereby grants you a NJPDES permit for the facility/activity named in this document. This permit is the regulatory mechanism used by the Department to help ensure your discharge will not harm the environment. By complying with the terms and conditions specified, you are assuming an important role in protecting New Jersey's valuable water resources. Your acceptance of this permit is an agreement to conform with all of its provisions when constructing, installing, modifying, or operating any facility for the collection, treatment, or discharge of pollutants to waters of the state. If you have any questions about this document, please feel free to contact the Department representative listed in the permit cover letter. Your cooperation in helping us protect and safeguard our state's environment is appreciated.

Permit Number: NJ0121525

Final: Stormwater Discharge Revoke & Reissue Permit Action

Permittee:

CLEAN EARTH OF NORTH JERSEY INC
115 JACOBUS AVE
Kearny, NJ 07032

Co-Permittee:

Property Owner:

CLEAN EARTH OF NORTH JERSEY INC
115 JACOBUS AVE
Kearny, NJ 07032

Location Of Activity:

CLEAN EARTH OF NORTH JERSEY INC
105 JACOBUS AVE
Kearny, NJ 07032-0000

Authorization(s) Covered Under This Approval	Issuance Date	Effective Date	Expiration Date
RF - Stormwater	12/01/2009	01/01/2010	12/31/2014

By Authority of:
Commissioner's Office

DEP AUTHORIZATION
Barry Chalofsky, P.P.
Bureau of Nonpoint Pollution Control
Division of Water Quality

(Terms, conditions and provisions attached hereto)



State of New Jersey
Department of Environmental Protection

James E. McGreevey
Governor

Bradley M. Campbell
Commissioner

Bureau of Release Prevention
P. O. Box 424
Trenton, N.J. 08625
Tel: (609) 633-0610 Fax: (609) 633-7031

JUN 08 2004

Robert Fixter
Vice President
Clean Earth Of North Jersey, Inc.
115 Jacobus Ave
Kearny, NJ 07032

Re: Discharge Prevention, Containment and Countermeasures (DPCC) and Discharge Cleanup and Removal (DCR) Plans **Annual Audit Inspection 2004**

Facility - Clean Earth Of North Jersey, Inc.
DIFF # - 090700151000

Dear Mr. Fixter:

The Bureau of Release Prevention (bureau) conducted an Annual Audit Inspection at your facility on May 11, 2004. Thank you for the cooperation extended to Anne Hernandez and Arthur Robinson of the bureau's Field Verification Section.

The results of the inspection indicate that there were no violations of N.J.A.C. 7:1E-1 et seq. found. This finding is based on the documents reviewed and areas inspected.

The bureau will continue to monitor and perform field inspections on any proposed facility upgrades. You are reminded that the department must be advised of any construction related changes (installation, new construction, substantial modification, replacement, etc.) to any aboveground storage tank, appurtenant structures, leak detection systems or other monitoring, prevention, or safety systems pursuant to the requirements of N.J.A.C. 7:1E-4.8(a) and (b). Plan amendments shall be acted upon by the department within 60 days of receipt of all required and requested information, data, etc.

Again, thank you for the time and courtesy provided by facility staff during the audit process. We look forward to working with you in your efforts to operate a discharge-free facility that will safeguard the public and protect the environmental resources on and around your facility.

Respectfully,

Priit R. Pals
Supervising Environmental Engineer
Field Verification Section

c: Anne Hernandez, Field Verification Section
Arthur Robinson, Field Verification Section
Mira Desai, Engineering Review Section

State of New Jersey
Department of Environmental Protection

Certifies That

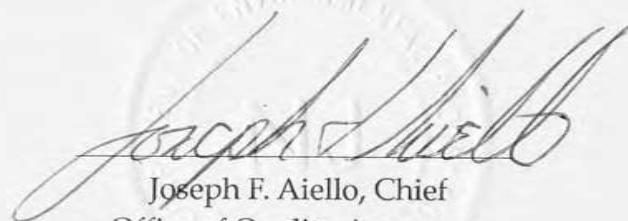
Clean Earth of North Jersey

Laboratory Certification ID # 09397

having duly met the requirements of the
Regulations Governing The Certification Of
Laboratories And Environmental Measurements N.J.A.C. 7:18 et. seq.

is hereby approved as a
State Certified Environmental Laboratory
to perform the analyses as indicated on the Annual Certified Parameter List
which must accompany this certificate to be valid

Expiration Date June 30, 2011



Joseph F. Aiello, Chief
Office of Quality Assurance



State of New Jersey

Department of Environmental Protection

Division of Solid and Hazardous Waste
401 East State Street
CN 421

Trenton, New Jersey 08625-0421
Phone# (609) 292-9380
Fax# (609) 533-9339

Robert C. Shinn, Jr.
Commissioner

Robert C. Shinn, Jr.
Commissioner

APR 23 1997

Robert Fixter
Vice President of Compliance
S&W Waste, Inc.
115 Jacobus Avenue
Kearny, New Jersey 07032

RE: Asbestos Waste, S&W Waste, Inc., Kearny, Hudson County, USEPA
ID No. NJD 991 291 105, New Jersey Hazardous Waste Facility
Permit No. C907N1HP03

Dear Mr. Fixter:

The Bureau of Hazardous Waste and Transfer Facilities (Bureau) acknowledges receipt of your April 16, 1997, letter. The letter states that your facility is preparing to receive asbestos waste for transfer and/or consolidation to authorized Subtitle D disposal facilities.

The Bureau has reviewed your submittal and determined that S&W Waste, Inc. may receive asbestos waste for transfer and/or consolidation to authorized Subtitle D disposal facilities provided the facility complies with all applicable regulations for the handling of asbestos materials and manages this material in accordance with the conditions of your facility's hazardous waste permit for the handling of X910 waste.

Should you have any questions regarding this matter, please e-mail John P. Scott of my staff at jscott@dep.state.nj.us or call him at (609) 292-9333.

Very truly yours,

Thomas Sherman, Chief
Bureau of Hazardous Waste
and Transfer Facilities

TP58/JPS

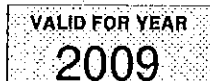
cc: Barry Tornick, USEPA
Jeff Sterling, BHWCE-Metro
DOCUMENT: S&W21

STATE OF NEW JERSEY
OFFICE OF WEIGHTS & MEASURES

PO BOX 490
AVENEL, NEW JERSEY 07001-0490
(732) 815-4866 FAX (732) 382-5298



REGISTRATION CERTIFICATE



REGISTRATION #: 01-000311-09
EFFECTIVE DATE: 02/01/09
EXPIRATION DATE: 01/31/10

This is to certify that the listed weighing and measuring devices are registered for one year with the Office of the State Superintendent of Weights & Measures pursuant to the provisions of Section 6 through 13 of Chapter 60, 1994 Public Laws of New Jersey.

DEVICE LOCATION:
CLEAN EARTH OF NORTH JERSEY INC.
115 JACOBUS AVE.
KEARNY NJ 07032-4512

CLEAN EARTH OF NORTH JERSEY INC.
115 JACOBUS AVE.
KEARNY NJ 07032-4512

ID	TYPE OF DEVICE	QUANTITY
05	VEH SCALE	3


STATE SUPERINTENDENT

NON-TRANSFERABLE. KEEP THIS CERTIFICATE CONSPICUOUSLY POSTED AT ALL TIMES
SEE ABOVE FOR MORE INFORMATION.

ISSUED: 02/03/09

RUN DATE: 02/17/09

Clean Earth of North Jersey, Inc.

Facility Insurance

ACORD TM		CERTIFICATE OF LIABILITY INSURANCE		OP ID J8 CLEAN-1	DATE (MM/DD/YYYY) 07/01/10
PRODUCER The Addis Group, Inc. 2500 Renaissance Blvd. Ste 100 King of Prussia PA 19406-2772 Phone: 610-279-8550 Fax: 610-279-8543			THIS CERTIFICATE IS ISSUED AS A MATTER OF INFORMATION ONLY AND CONFERS NO RIGHTS UPON THE CERTIFICATE HOLDER. THIS CERTIFICATE DOES NOT AMEND, EXTEND OR ALTER THE COVERAGE AFFORDED BY THE POLICIES BELOW.		
INSURED Clean Earth, Inc. 334 South Warminster Road Hatboro PA 19040			INSURERS AFFORDING COVERAGE		NAIC #
			INSURER A: Zurich American Insurance Co.		16535
			INSURER B: Steadfast Insurance Co.		26387
			INSURER C: American Guarantee & Liability		26247
			INSURER D:		
			INSURER E:		

COVERAGES

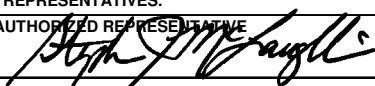
THE POLICIES OF INSURANCE LISTED BELOW HAVE BEEN ISSUED TO THE INSURED NAMED ABOVE FOR THE POLICY PERIOD INDICATED. NOTWITHSTANDING ANY REQUIREMENT, TERM OR CONDITION OF ANY CONTRACT OR OTHER DOCUMENT WITH RESPECT TO WHICH THIS CERTIFICATE MAY BE ISSUED OR MAY PERTAIN, THE INSURANCE AFFORDED BY THE POLICIES DESCRIBED HEREIN IS SUBJECT TO ALL THE TERMS, EXCLUSIONS AND CONDITIONS OF SUCH POLICIES. AGGREGATE LIMITS SHOWN MAY HAVE BEEN REDUCED BY PAID CLAIMS.

INSR	ADD'L	TYPE OF INSURANCE	POLICY NUMBER	POLICY EFFECTIVE DATE (MM/DD/YY)	POLICY EXPIRATION DATE (MM/DD/YY)	LIMITS
A		GENERAL LIABILITY	GLO9052698-04	06/30/10	06/30/11	EACH OCCURRENCE
		<input checked="" type="checkbox"/> COMMERCIAL GENERAL LIABILITY				DAMAGE TO RENTED PREMISES (Ea occurrence)
		<input type="checkbox"/> CLAIMS MADE <input checked="" type="checkbox"/> OCCUR				\$ 1,000,000
						\$ 500,000
						MED EXP (Any one person)
						\$ 10,000
						PERSONAL & ADV INJURY
						\$ 1,000,000
						GENERAL AGGREGATE
						\$ 2,000,000
						PRODUCTS - COMP/OP AGG
						\$ 2,000,000
GEN'L AGGREGATE LIMIT APPLIES PER: <input type="checkbox"/> POLICY <input type="checkbox"/> PRO-JECT <input type="checkbox"/> LOC						
C		AUTOMOBILE LIABILITY	BAP9052700-04 <small>INCL. MCS-90 \$1,000,000</small>	06/30/10	06/30/11	COMBINED SINGLE LIMIT (Ea accident)
		<input checked="" type="checkbox"/> ANY AUTO				\$ 1,000,000
		<input type="checkbox"/> ALL OWNED AUTOS				
		<input type="checkbox"/> SCHEDULED AUTOS				
		<input checked="" type="checkbox"/> HIRED AUTOS				
		<input checked="" type="checkbox"/> NON-OWNED AUTOS				
<input checked="" type="checkbox"/> Comp \$1,000						
<input checked="" type="checkbox"/> Collision \$1,000						
		GARAGE LIABILITY				AUTO ONLY - EA ACCIDENT
		<input type="checkbox"/> ANY AUTO				\$
		OTHER THAN AUTO ONLY: EA ACC				\$
						AGG
		EXCESS/UMBRELLA LIABILITY				EACH OCCURRENCE
		<input type="checkbox"/> OCCUR <input type="checkbox"/> CLAIMS MADE				\$
						AGGREGATE
						\$
						DEDUCTIBLE
						\$
A		WORKERS COMPENSATION AND EMPLOYERS' LIABILITY	WC9052692-04	06/30/10	06/30/11	<input checked="" type="checkbox"/> WC STATUTORY LIMITS <input type="checkbox"/> OTHER
		ANY PROPRIETOR/PARTNER/EXECUTIVE OFFICER/MEMBER EXCLUDED?				E.L. EACH ACCIDENT
		If yes, describe under SPECIAL PROVISIONS below				\$ 1,000,000
						E.L. DISEASE - EA EMPLOYEE
						\$ 1,000,000
	E.L. DISEASE - POLICY LIMIT					
	\$ 1,000,000					
B		Pollution Liability	PLC9052705-01	06/30/09	06/30/11	Per Claim
		Deduct.				
						\$2,000,000
						\$100,000

DESCRIPTION OF OPERATIONS / LOCATIONS / VEHICLES / EXCLUSIONS ADDED BY ENDORSEMENT / SPECIAL PROVISIONS

CERTIFICATE HOLDER

CANCELLATION

<div style="text-align: center;"> EVOFCOV Evidence of Coverage </div>	SHOULD ANY OF THE ABOVE DESCRIBED POLICIES BE CANCELLED BEFORE THE EXPIRATION DATE THEREOF, THE ISSUING INSURER WILL ENDEAVOR TO MAIL <u>30</u> DAYS WRITTEN NOTICE TO THE CERTIFICATE HOLDER NAMED TO THE LEFT, BUT FAILURE TO DO SO SHALL IMPOSE NO OBLIGATION OR LIABILITY OF ANY KIND UPON THE INSURER, ITS AGENTS OR REPRESENTATIVES.
	AUTHORIZED REPRESENTATIVE 

IMPORTANT

If the certificate holder is an ADDITIONAL INSURED, the policy(ies) must be endorsed. A statement on this certificate does not confer rights to the certificate holder in lieu of such endorsement(s).

If SUBROGATION IS WAIVED, subject to the terms and conditions of the policy, certain policies may require an endorsement. A statement on this certificate does not confer rights to the certificate holder in lieu of such endorsement(s).

DISCLAIMER

The Certificate of Insurance on the reverse side of this form does not constitute a contract between the issuing insurer(s), authorized representative or producer, and the certificate holder, nor does it affirmatively or negatively amend, extend or alter the coverage afforded by the policies listed thereon.

NOTEPAD:

INSURED'S NAME Clean Earth, Inc.

CLEAN-1

OPID J8

PAGE 3

DATE 07/01/10

NAMED INSUREDS:

Allied Environmental Group, Inc., 2163 Merrick Ave., Merrick, NY 11566
Clean Earth of Carteret, Inc., 24 Middlesex Ave., Carteret, NJ 07008
Clean Earth Dredging Technologies, Inc., 334 South Warminster Rd, Hatboro, PA 19040
Clean Earth of Maryland, Inc., 1469 Oak Ridge Place, Hagerstown, MD 21740
Clean Earth of New Castle, Inc., 94 Pyles Lane, New Castle, DE 19720
Clean Earth of North Jersey, Inc., 115 Jacobus Ave., South Kearny, NJ 07032
Clean Earth of Philadelphia, Inc., 3201 61st St., Philadelphia, PA 19153
Clean Earth of Southeast Pennsylvania, Inc., 7 Steel Road East, Morrisville, PA 19067

Clean Earth of North Jersey, Inc.

Regulatory Contacts

ACO – Bureau of Federal Case Management
Donna Gaffigan 609-633-1455

Permitting – Bureau of Hazardous Waste Engineering
Bob Confer 609-292-9880

Enforcement – NJDEP Northern Field Office
Michael Mariano 973-656-4470

Clean Earth of North Jersey, Inc.

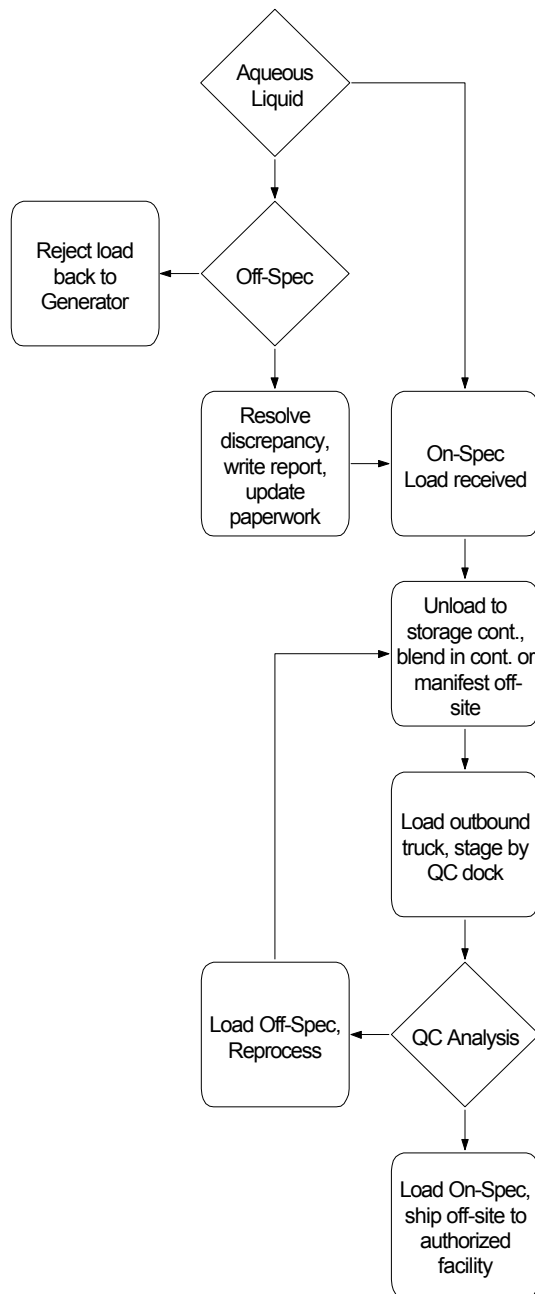
**Material Handling
Flow Charts**

Clean Earth of North Jersey Bulk Aqueous Liquid

Truck weighed, paperwork checked which includes review of manifest, hauling permit s checked, make sure load was properly scheduled and went through prior days scheduling review

Truck staged at QC dock & sampled. Sample forwarded to lab with QA/QC sheet

Lab analysis complete, results forwarded to Environmental Department



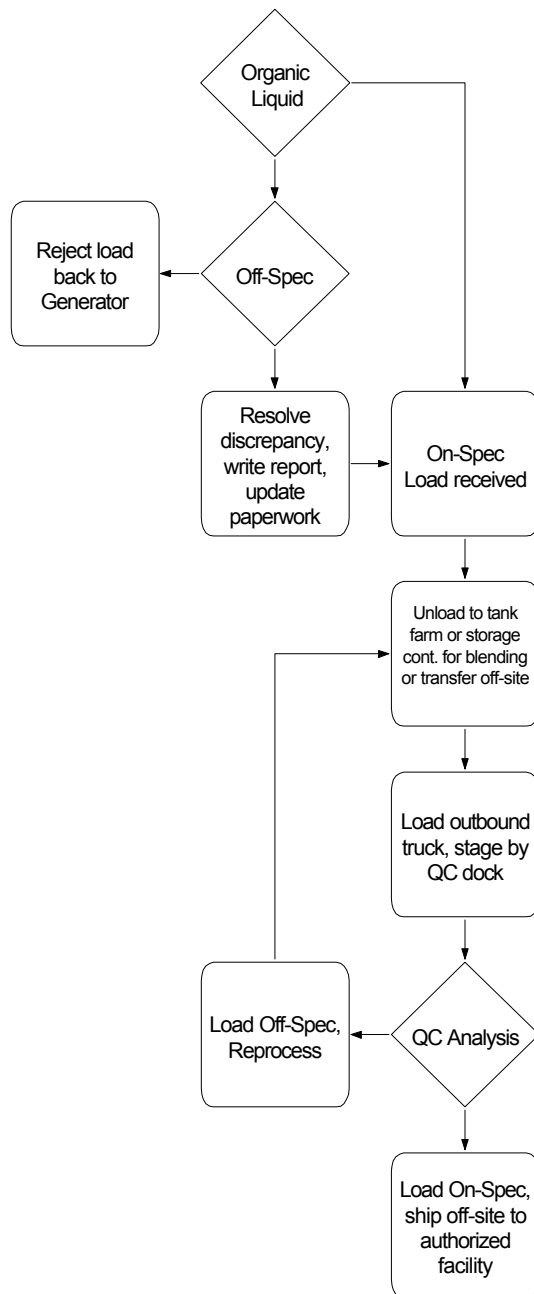
c:\a1karen\aqueous

Clean Earth of North Jersey Bulk Organic Liquid

Truck weighed, paperwork checked which includes review of manifest, hauling permit s checked, make sure load was properly scheduled and went through prior days scheduling review

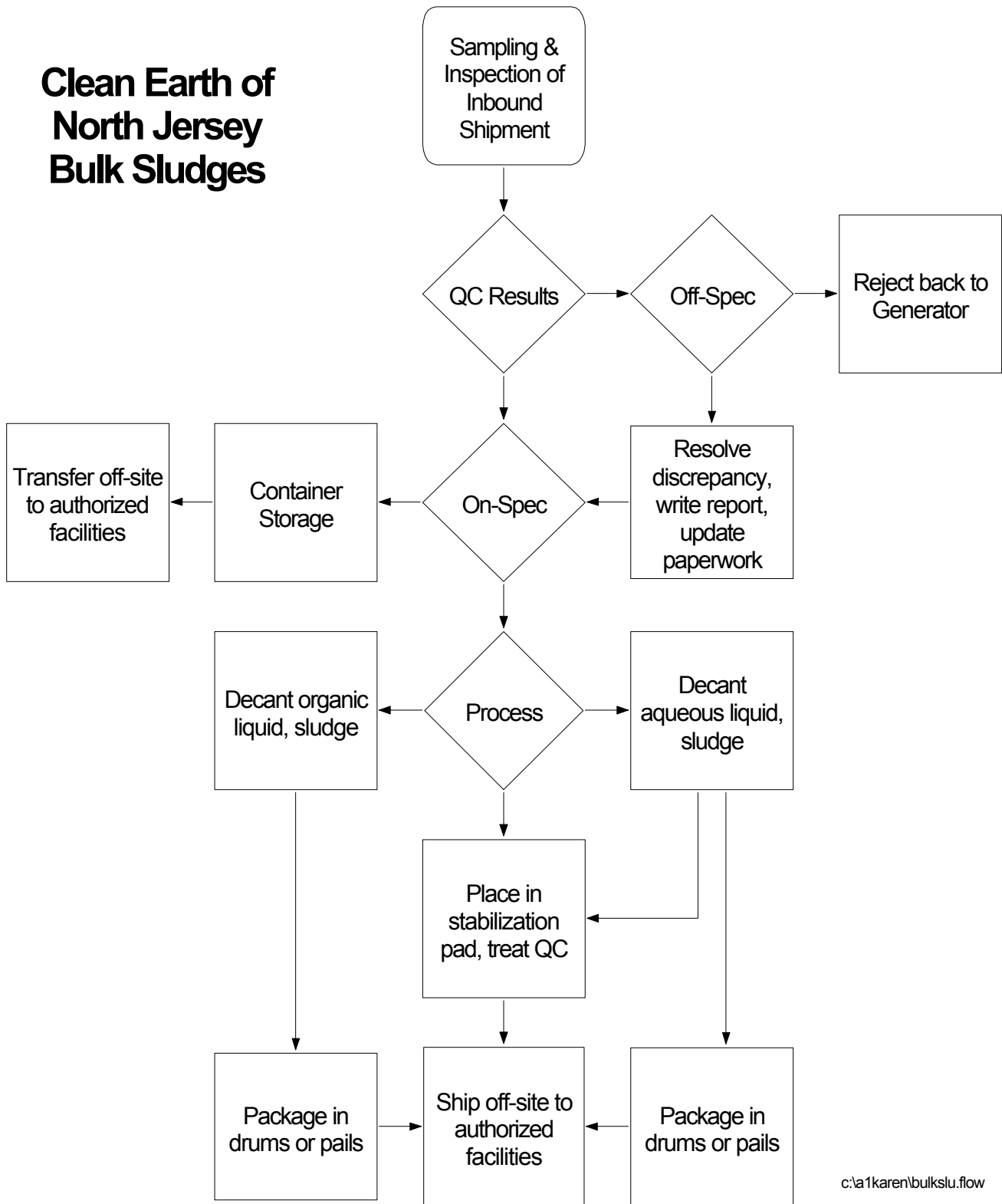
Truck staged at QC dock & sampled. Sample forwarded to lab with QA/QC sheet

Lab analysis complete, results forwarded to Environmental Department



c:\a1karen\organic.flow

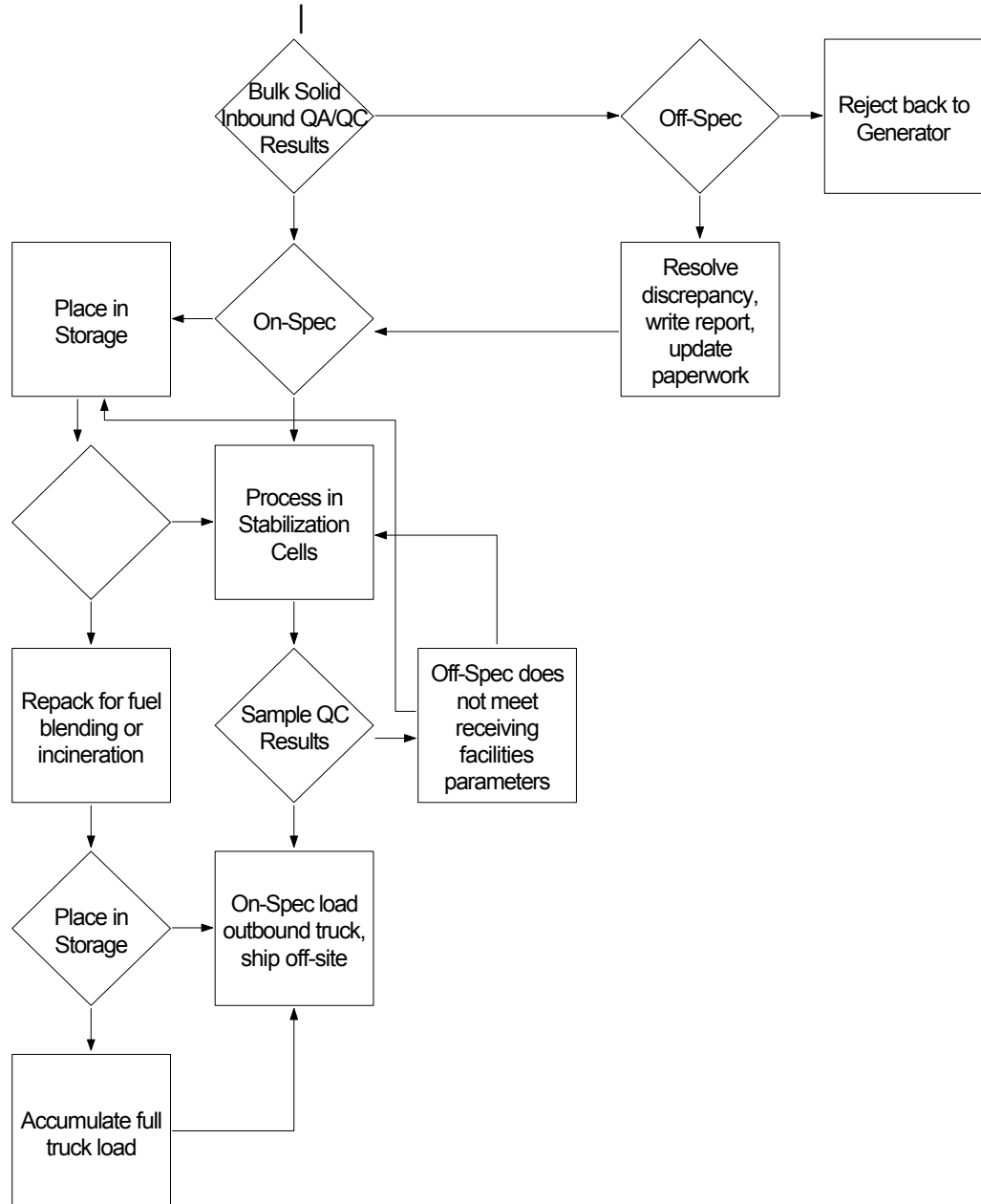
Clean Earth of North Jersey Bulk Sludges



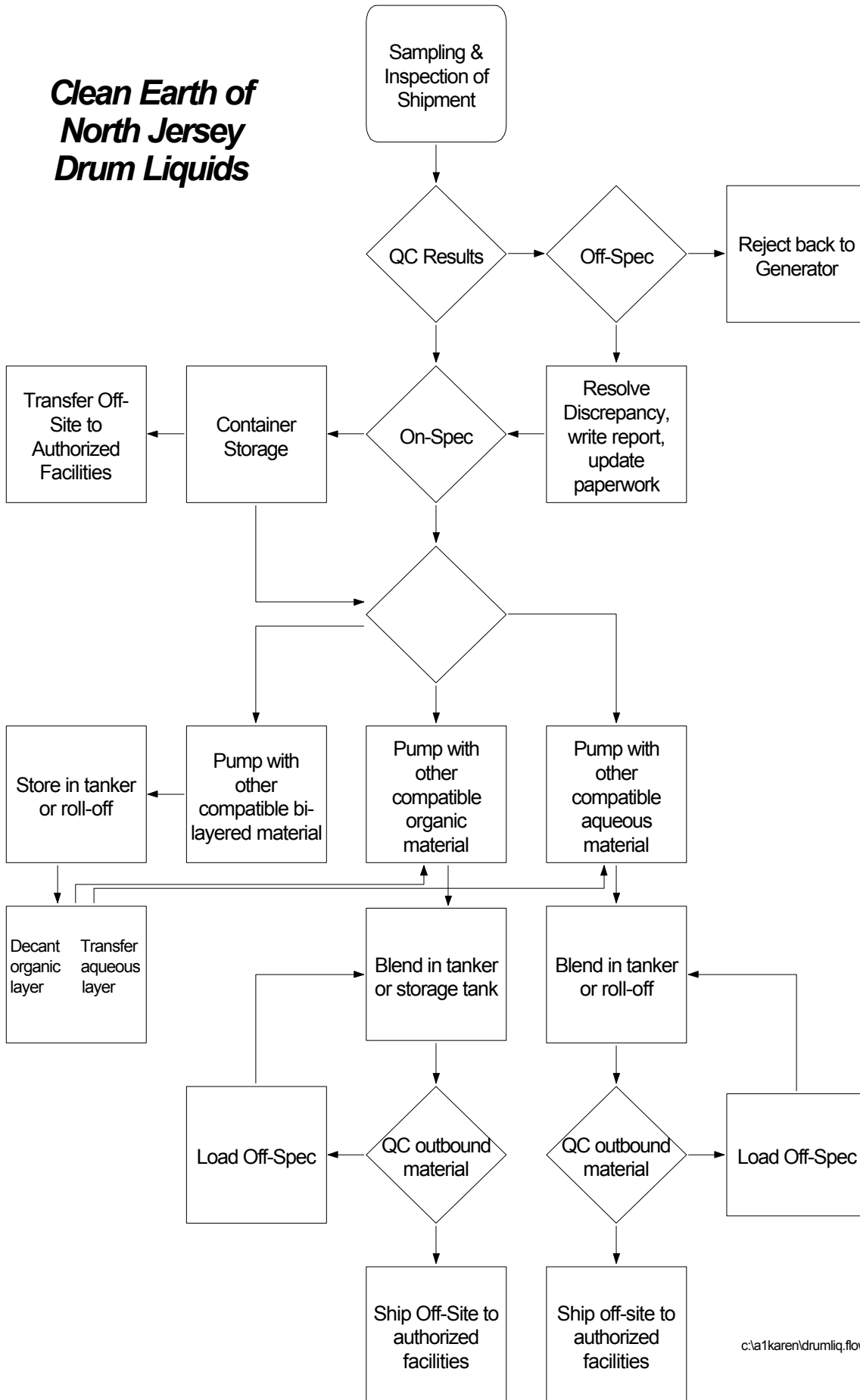
c:\a1karen\bulkslu.flow

Clean Earth of North Jersey Bulk Solids

- 1) Truck weighed, paperwork checked (manifest review, hauling permits checked, make sure load was properly scheduled and went through prior days scheduling review).
- 2) Truck staged at QC dock (or placed on Pad A or on a large processing pad) then sampled. Sample along with QA/QC sheet forwarded to the laboratory.
- 3) Lab analysis complete, results forwarded to Environmental Department.

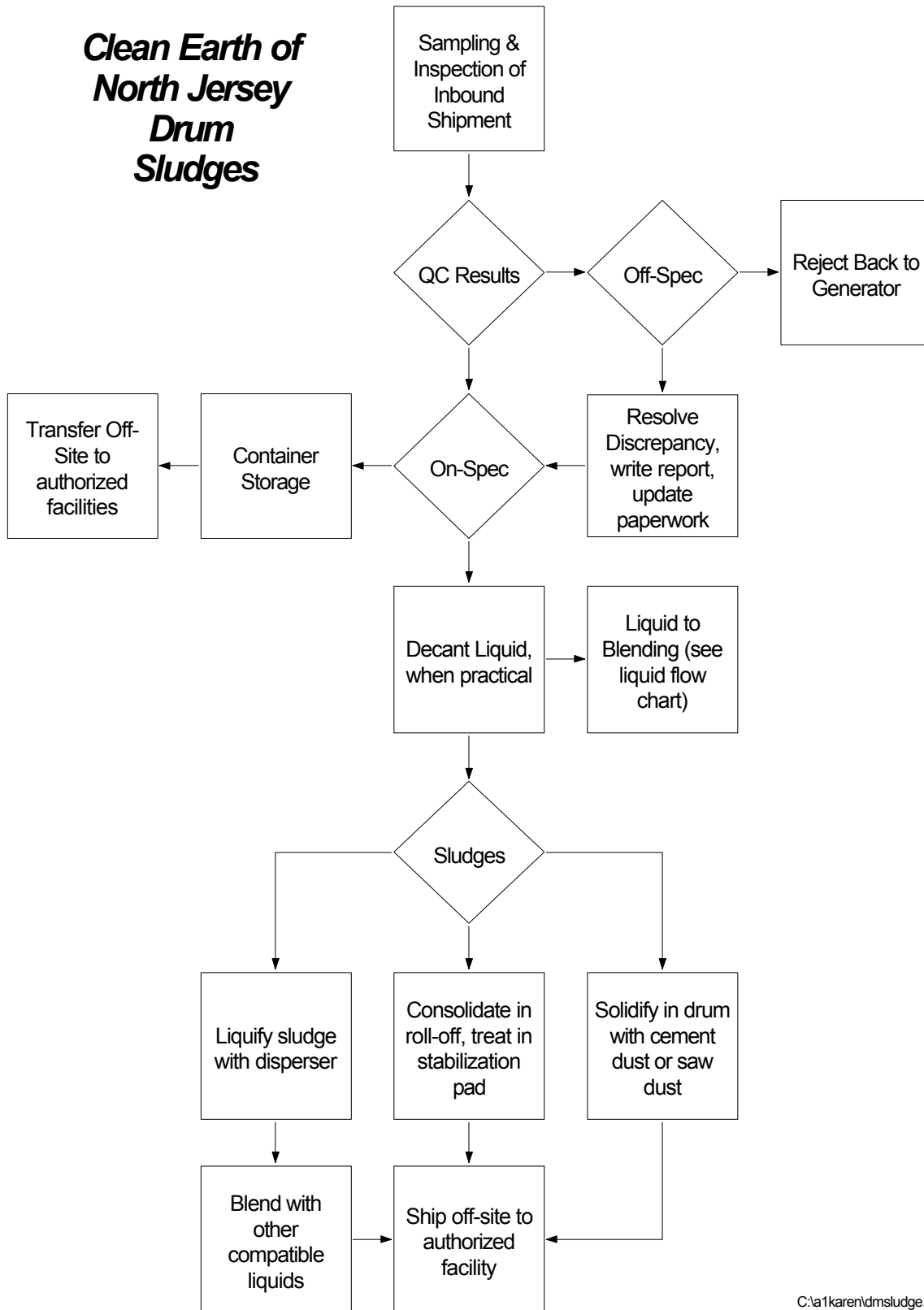


Clean Earth of North Jersey Drum Liquids



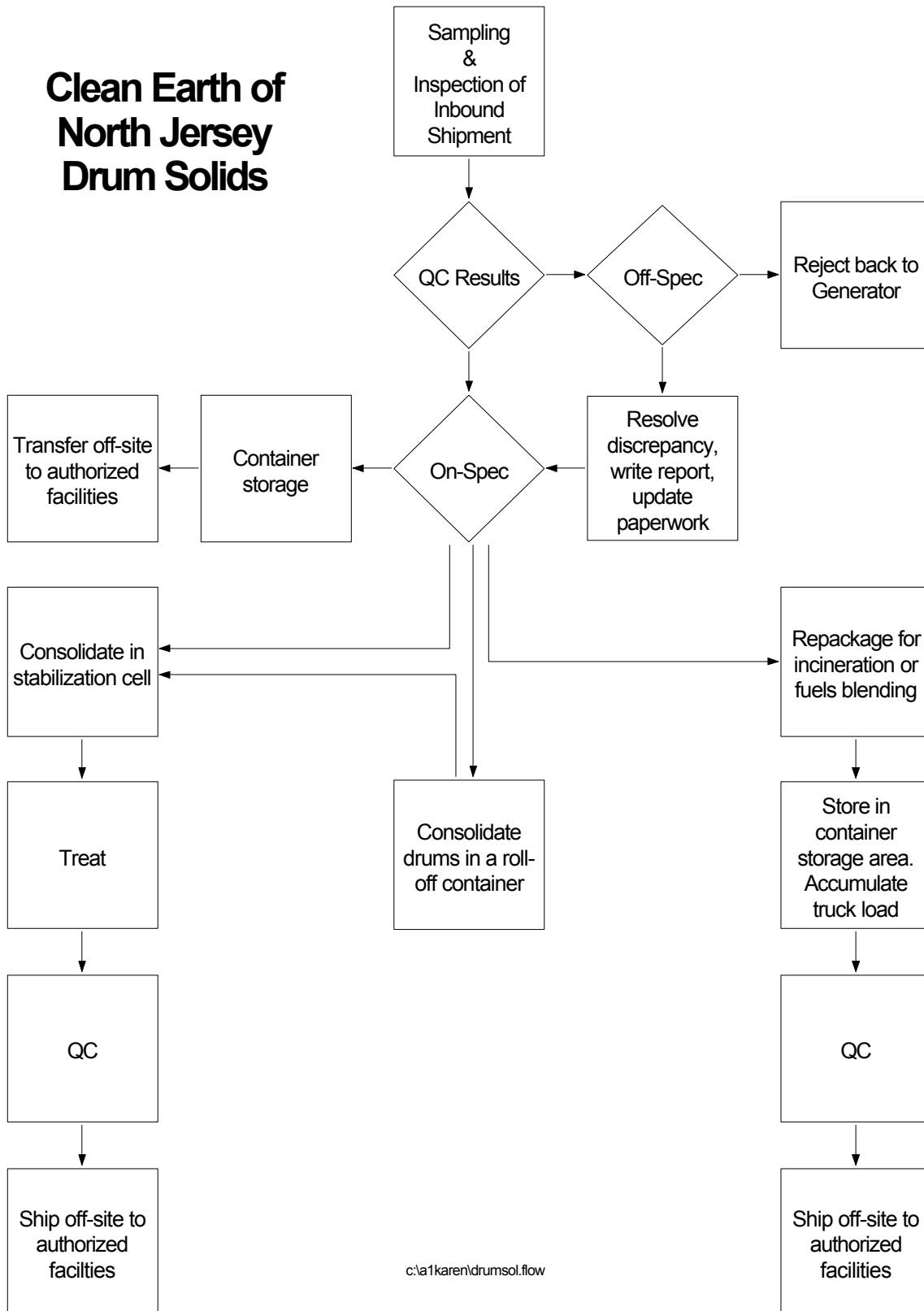
c:\a1karen\drumliq.flow

Clean Earth of North Jersey Drum Sludges



C:\a1karen\dmsludge.flow

Clean Earth of North Jersey Drum Solids



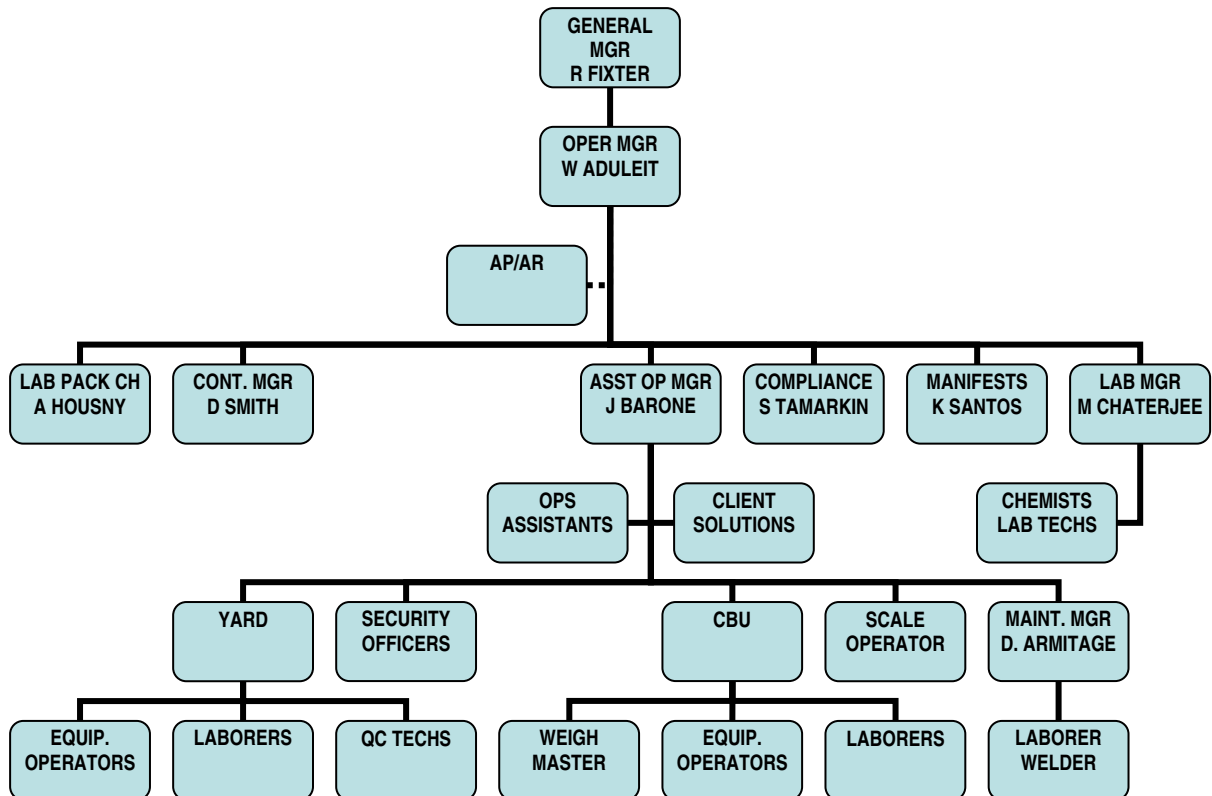
c:\a1\karen\drumsol.flow

Clean Earth of North Jersey, Inc.

Organizational Chart

CLEAN EARTH OF NORTH JERSEY, INC.

ORGANIZATION CHART



REVISED 4/20/09