



# Lift Lines

== No. 104, August 2009 ==

Mountain High Snowsport Club, PO Box 2182, Portland, OR 97208



## From the Prez

Hi again; I know we are all just waiting for Snow to fall after the 100 plus week we have gone through. Enough of this heat. A positive thought is that at our August 1st meeting we are planning some great winter events. Emilio is planning his "MYSTERY trip" where no-one knows where we are going but him and everyone has a great time. Other ski trips are being planed, along with a Wine tour to Yakima in September. See details inside our Award winning Lift Lines.

We are sooo lucky to have such great support and ideas from our board and others at the meetings. Come to the next meeting and get involved, remember, "You only get back what you put in". I can't thank everyone that attended our last meeting enough for helping to create "the best ski club ever". Your participation is so valuable. We have over 50 people rafting this year and that will enjoy Lou's-"Q" BBQ dinner Sat. night on the Deschutes river trip.

Mt. High is making donations to the **US Ski Team** and the **Mt. Hood Cultural Museum** event in September.

See you at the picnic or Raft trip and enjoy your summer. Snow will fly early enough...

Your Prez. *Gordy Lusk*

## The Hot Summer Issue

<b>Mt. High Picnic:</b>	p. 2.
<b>Rafting Weekend:</b>	pp. 3 - 4
<b>Wine Tour Yakima Valley:</b>	p. 5
<b>Flicks on Bricks, New memb.</b>	p. 6
<b>NWSCC + FWSA:</b>	pp. 7 - 8
<b>Ski Pole Rescue Hike:</b>	pp. 9 - 10



Note the color code.  
Our club is blue.

## 2009 CALENDAR

**Blue:** Mountain High events

**Red:** NWSCC/ FWSA events

**Black:** General events

**Aug. 7 (Fri.): Flicks on the Bricks** at dusk

**Aug 16 (Sun.): Mt. High Picnic.**

**Aug 20-22: Mt. High Rafting.**  
Deschutes River, Maupin, OR.

**Sept. 19 Sat.): NWSCC 30th**  
Anniversary Party, 6 pm.

**Sep. 25-27: (Fri-Sun) Mt. High**  
Yakima Valley Wine Tour

**Oct. 30-31: (Fri-Sun) Warren Miller**

**Nov. 6-8: (Fri-Sun) Portland Ski Fever**  
& Snowboard Show, the Expo Ctr.

**Nov. 9 (Mon.): Ski Fair**

**Dec. 10-13: (Fri-Sun) NWSCC trip to**  
Utah? (Still tentative)

**Jan. 15-18: (Fri-Mon) Mt. High**  
Mystery bus trip

**Feb. 17-20: (Wed-Sun) Train trip to**  
Whitefish, MT. (Big Mountain)

**Mar. 13-20: Fernie/Kimberley (Canada)**

**Mar. 27-31: Heavenly/Tahoe trip.**

**Apr. 2 - 7: Canada Ski Safari**

### Mt. High

### Golf



We are going to cancel golf for the month of August due to the activities with the club.

We will put something together in September.

Thanks,  
Cal

### Picnic & Bike ride



**Aug. 16, 2009.**  
Turn to August on our Mountain High wall calendar, and you'll see it's time for our annual picnic at 11 am, preceded by a bike ride, at 9 am.

See details on page 3.

See you at Sellwood Park!

### Rafting & Wining



**Aug. 20 - 22,**  
2009. Maupin.

**50** people have signed up for our Rafting weekend on the Deschutes River.

The next event to keep in mind is our weekend **Wine Tour, September 25-27**, visiting the Yakima valley vineyards.

Mt.High

Picnic

Mt.High



August 16, (Sunday). Click here for [map](#) on our website.

Place: **Sellwood Park**, Picnic area A

9 am -- Bike ride, from lower parking lot, near the river.  
See map.

11 am -- Picnic starts

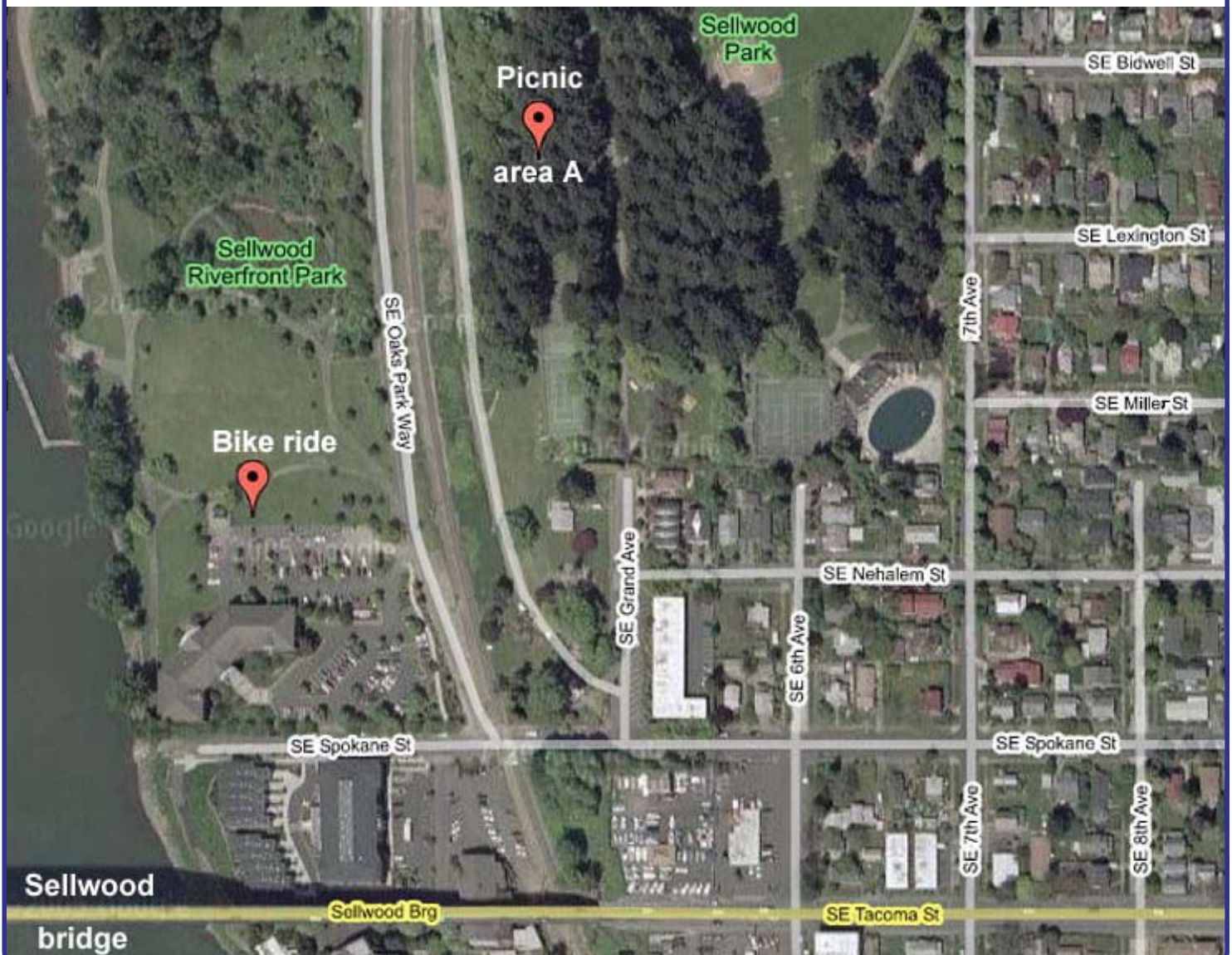
12 (noon) - 1 pm -- Softball (first 45 mins. for adults only)

Note: the first 45 minutes on the softball court will be reserved for adults only.



A variety of specialty gourmet sausages will be provided by the club, but it's mostly a **potluck**. So, bring some food, some drinks, and maybe some chairs.

**Directions:** Immediately after crossing the Sellwood bridge (if coming from the west), turn left onto **6th Ave.**, and immediately start looking for parking spot. Enter the park on foot by following **SE Grand Avenue** (from the south), and follow the path for abt. 100 yards. Our picnic area is on the left side of the path. See map. "Not being able to find us" is not a valid excuse!!!



Mt. High

## Deschutes River Raft Weekend



**Aug 21-23, 2008.** This has become an annual tradition for our club. A weekend of rafting and frolicking in the sun on the Deschutes River at Maupin, Oregon.

**Contact Gordy: 503-804-8363 or [GordyLusk@hotmail.com](mailto:GordyLusk@hotmail.com).** Reservation & payment must be received by July 15. (or don't show up). Cancellation Date is August 1st.

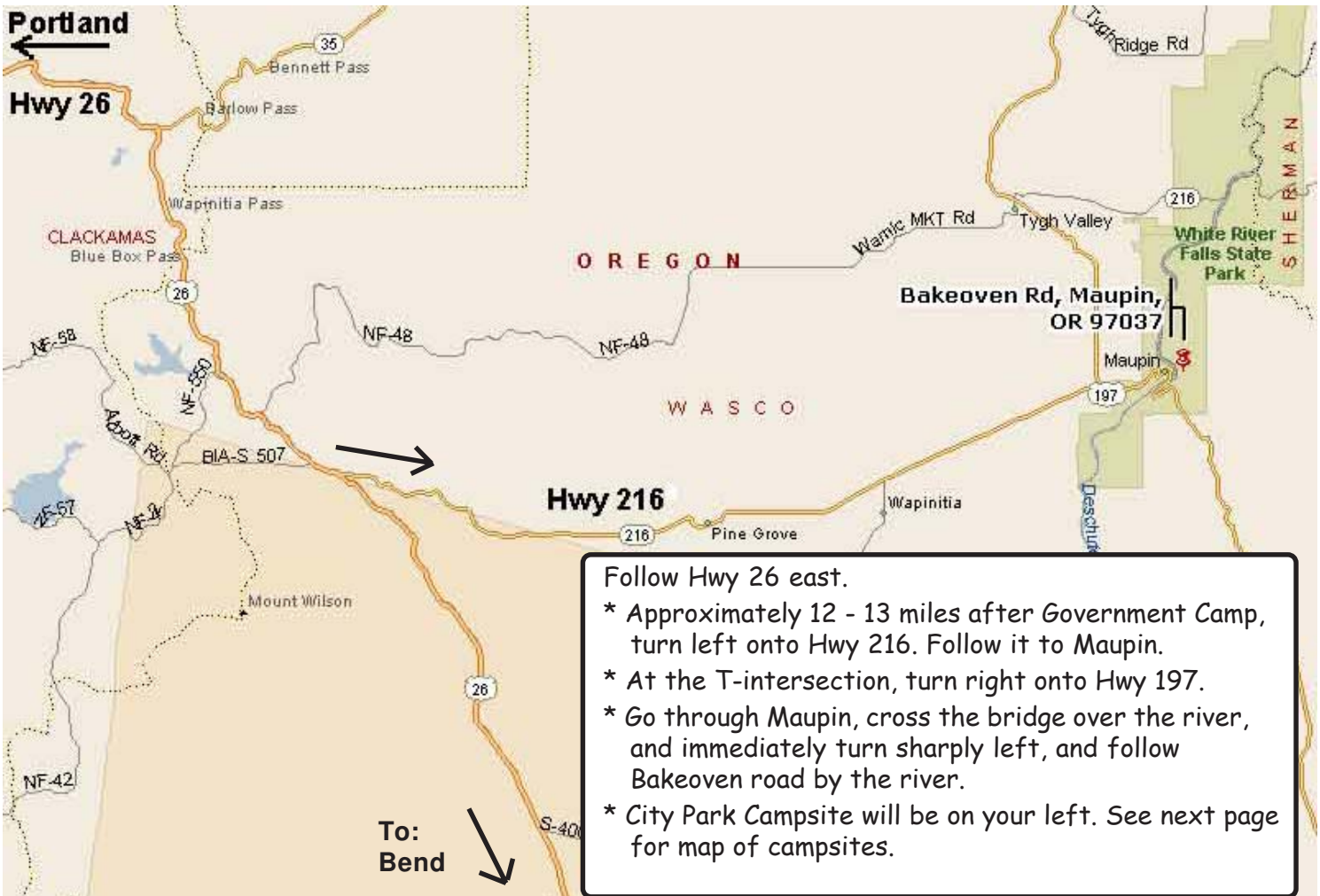
**Trip includes:**

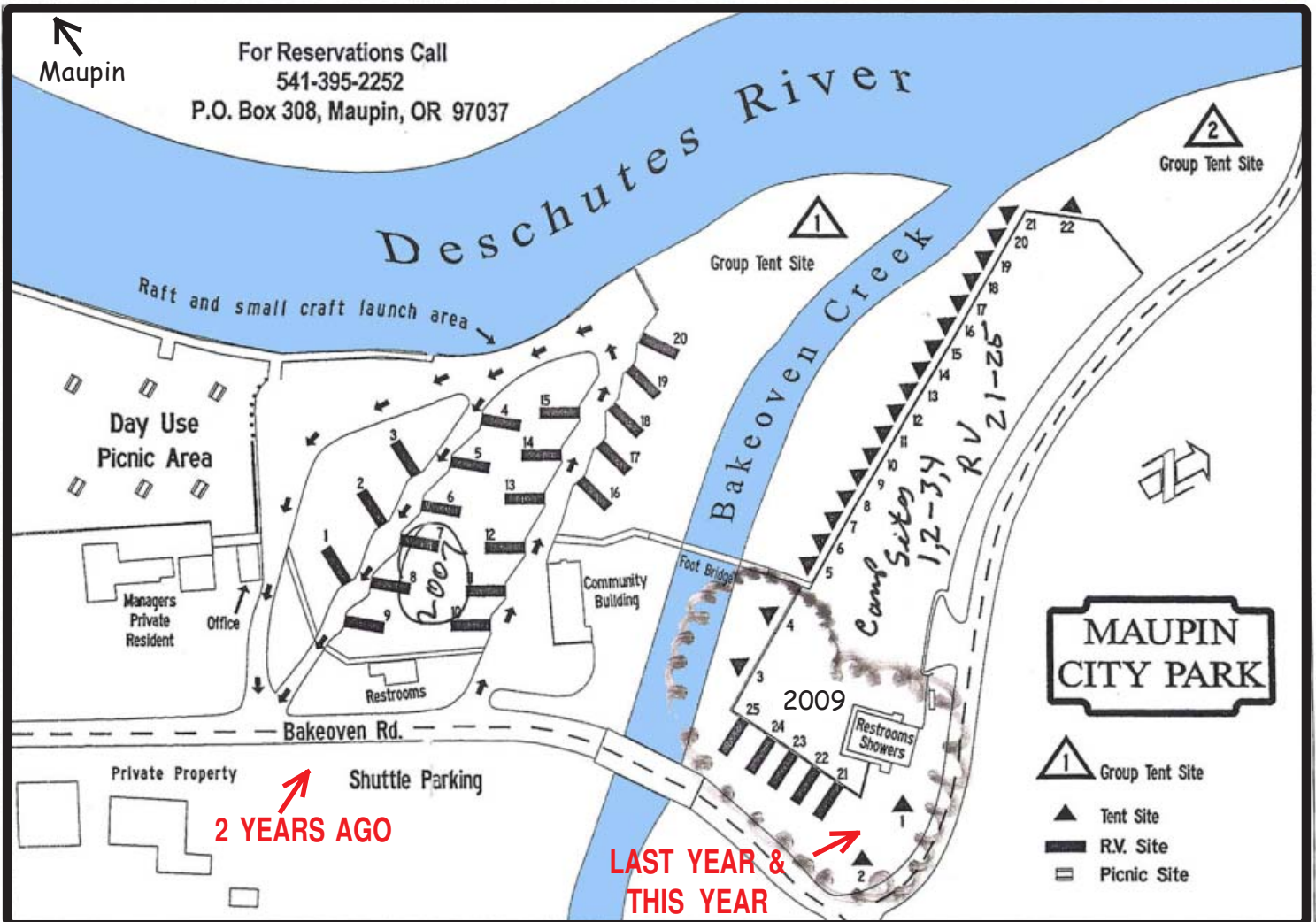
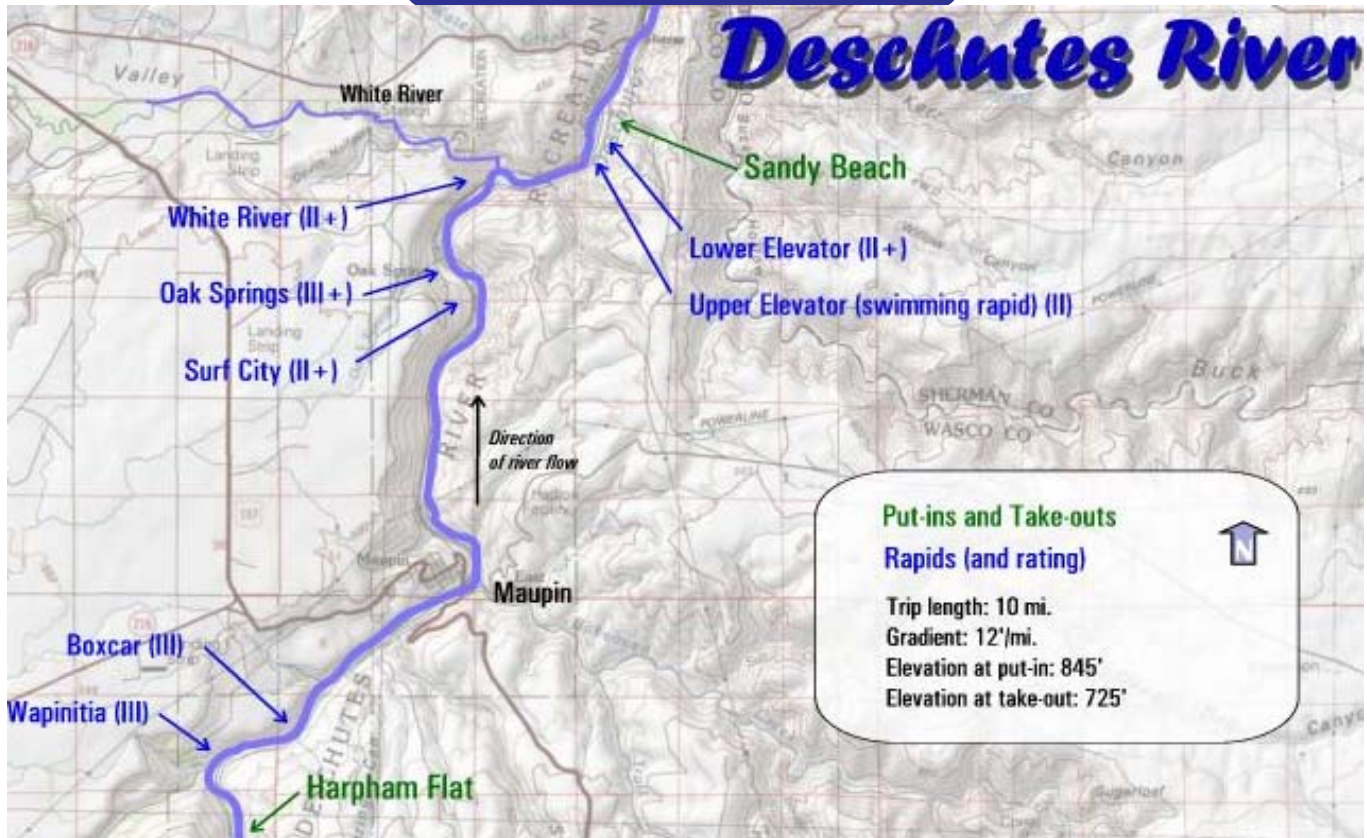
**Camping:** Thursday, Friday and Saturday night in Maupin City Park. Camp sites at new location (see next page). RV space available for an additional \$20.00 a night.

**Rafting:** (Row, Paddle or just ride) Friday and Saturday. We'll provide the rafts.

**Saturday night dinner:** Lou's-Q will cook chicken pork ribs and BBQ beans on Saturday only, but bring a salad, dessert or HDO for Sat. dinner. For other times, bring your own food and drinks. Also, bring quarters for the showers!

**Camp, raft, dinner = \$90.00 pp.** (Non-members \$105.00) To sign up, please use the Dough Transmittal form, page 11 or print the form from our web site. See the [Forms](#) page.





Mt. High

# Yakima Valley Wine Tour



**Yakima, WA; September 25, 26, 27**

Contact Gordy @ 503-804-8363 or @ [gordylusk@hotmail.com](mailto:gordylusk@hotmail.com)  
or Sandi @ [sandid@aol.com](mailto:sandid@aol.com) for your reservation;

Reservation and payment must be received by September 1st. (or don't show up)

CANCELTION DATE IS SEPTEMBER 1<sup>ST</sup>

**MT. HIGH MEMBERS \$225.00**

**NON MEMBERS \$240.00**

**TRIP INCLUDES:**

Scene from movie "Sideways". See it!

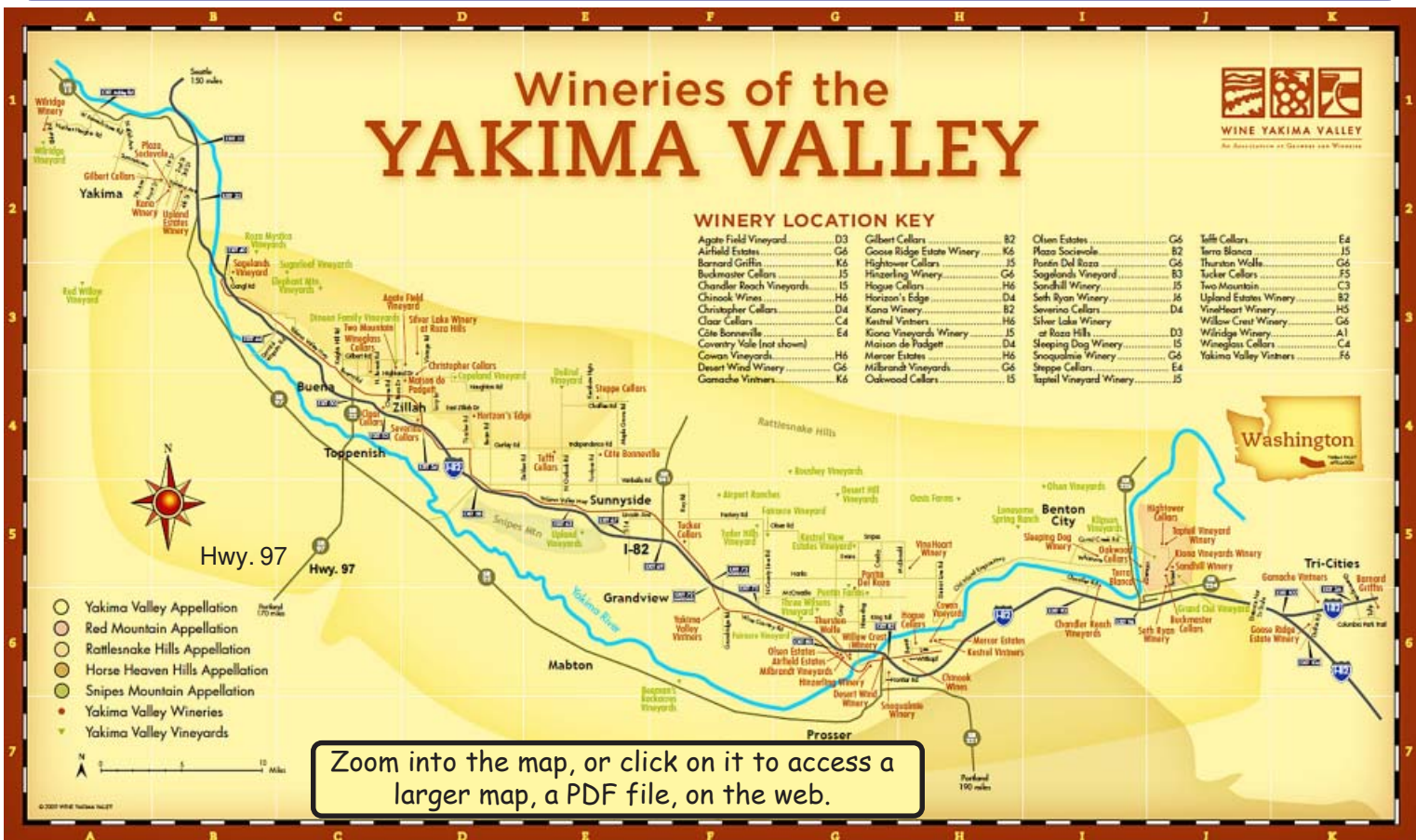


**Trip limited to the first 20 people**

We will leave Portland on a luxury motor limo provided by *LMI Limousines Inc.* on Friday afternoon around 4:30 to arrive in Yakima at 8:00. For the trip up, you will need to bring a bottle of Washington Red wine in a paper bag for the BLIND JUDGING and prizes for the winners and an hors d'oeuvre or snack to share with others. Mt. High will furnish soft drinks water and some snacks. We will be staying 2 nights at the Quality Inn in Zillah, WA (heart of the wine area). Price is based on double occupancy (call for other arrangements or for a smoking room).

Saturday we will start our tasting at Bonair Winery and go from there to 4 or 5 other exciting wineries throughout the day. Saturday night there are restaurants nearby or we could arrange a potluck. Sunday we will visit more wineries for tasting and be back in Portland around 4:00.

This is a great area for those who enjoy quality wines at a great price, camaraderie with old and new friends. The wineries we visited had exceptional quality for the dollar. Join us for a fun weekend...



## Flicks on the Bricks



Hey Everybody, it's summertime, and time to enjoy the great Northwest evenings outdoors.

Anyone who would like to join fellow Mt Highers, come and let's enjoy the evening together.

**Friday, August 7th, Pioneer Square** at dusk is Flicks on the Bricks. There's free popcorn and the classic movie "Jurassic Park". The movie starts at dusk.

Hope to see you there ....

**Debbi**

[Activities@mthigh.org](mailto:Activities@mthigh.org)

## Passport Required



If you travel outside the US, including winter trips to Canada, you will need a passport. See: [www.mthigh.org/Articles/Passports.htm](http://www.mthigh.org/Articles/Passports.htm)

You may have several incentives to cross the border this Winter, including:

- The Whistler Cabin trip in January.
- The Winter Olympics in February
- Our Ferniel/ Kimberley trip in March
- Our Canada Ski Safari in April.

So, be prepared. Make sure your passport hasn't expired. Or get one if you don't have it.

## Welcome New Members (who joined us in 2008/2009) - Sorted by first name



A warm welcome to new members who have joined us in the last year or so. We apologize for not having listed any of our new members in a little over a year.

Edit Szekersova	Kit Wiley	Rita MacDonald
Eric Todd Baumann	Kris Weldon	Rob Taylor
Farzin Ghezal	Kristine Canham	Robert Burns
Gary M. Van Arsdall	Larry L. Marsh	Rod Barker
Grant Fitzpatrick	Linda Shanley	Ron Jones
Grant Westenberg	Lisa Diercksen	Ron Piazza
Greg Maxwell-Muir	Lois Kenan	Russell Perkins
James Anderson	Lynn Norbury	Sally Niedermeyer
Jan Thingvold	Mariya Pustovit	Sandra Kaufman
Jeanne Nyquist	Mark Milnes	Sandra Pointer
Jeffrey J. Buckley	Martin Hecht	Scott Firstenburg
Jenny Anderson	Mary E. Taylor	Scott Stepan
Jerry Fitzpatrick	Maureen Musser	Sean Tyler
Jody Savara	Melinda Alexandre	Shaun Boehle
John Barton	Melissa Wilson	Sheri Cansler
John Snodgrass	Michael Mockovak	Sheryl Feuz
Joseph Zander	Michelle McCracken	Stan Gass
Joshua Ray Morris	Nancy Pratt	Stephen Kingsbury
Joy Schmieg	Peter Troy	Susan Anderson
Joyce Boss	Phil Sylla	Susan Ottersen
Julie Barton	Rachel Carillo	Suzanne Tyler
Julie Yang	Reed Clarke	Sylvia de Lacy
Karen Ashley	Richard Poludniak	Tammy Coxen
Kathy Blachly	Richard D. Horner	Thomas Hiller
Ken Antone	Rick Crawford	Tom Cansler
		Troy Scott Bowman

**WELCOME TO THE CLUB!**

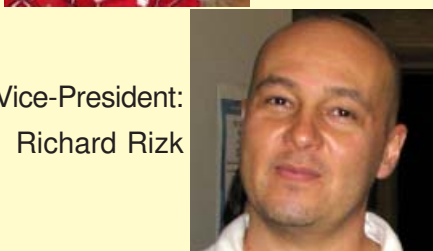
If your name is mis-spelled, or if you can't find it here, please notify Emilio: [info@mthigh.org](mailto:info@mthigh.org), 503-378-0171.

### NWSCC Board 2009

If you read the July issue of the NWSCC Newsletter (which we email to everyone who has an email address), you already know that the current Board, elected in June 2009, consists of:



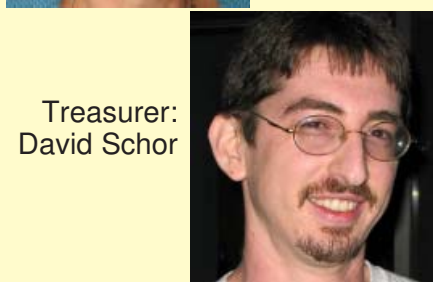
President:  
Sheri Parshall



Vice-President:  
Richard Rizk



Secretary:  
Sandi Shaub



Treasurer:  
David Schor



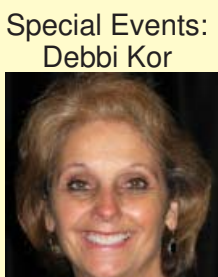
Travel:  
Barbara Bousum



Educational Outreach & Webmaster:  
John Jessen



Membership  
Colleen Walter



Special Events:  
Debbi Kor



Historian:  
Norvin Peer



Commercial Memb.  
Jessica Lee



Communications  
Linda McGavin

### NWSCC 30th Anniversary Party

#### "Mountains of Memories"

Sept. 19, 2009 (Saturday): 6:00 pm.

Celebrating "MOUNTAINS OF MEMORIES" with the Northwest Ski Club Council.

Location: Montgomery Park.

- Included: \* Yummy eats, 2 drink tickets/ person,
- \* Special guest: PHIL MAHRE !!!
- \* Dancing to music of Randy Free,
- \* Oral and Silent auction benefitting the Mt. Hood Museum, including trips to Vail, Sun Valley and Maui.
- \* Special "ballet on skis" production by the Jefferson Dancers



Seeing **Phil Mahre** will be a special treat all by itself. The twin brothers, Phil and Steve Mahre grew up at the White Pass ski area, where their father Dave Mahre was the mountain manager. Phil won 27 World Cup races in his career.

In 1980, Phil won the Silver medal in Slalom at the Winter Olympics in Lake Placid, just behind the legendary Ingemar Stenmark.

In 1984, Phil won the Gold medal in Slalom at the Winter Olympics in Sarajevo, Bosnia (formerly part of Yugoslavia). The Silver medal was won by his twin brother Steve Mahre.

So, come enjoy some good food, good company, an entertaining performance entitled "Skia", and rub elbows with Phil Mahre. Tell him our club recently had a ski trip to his home ski area: White Pass, WA.

Price: \$65 per person. Limited quantity of tickets are available due to space. Buy your tickets NOW!! Tickets are available from NWSCC Board members and will also be available at the Mt. Hood Museum (Govt. Camp). If they are purchased through the museum, credit cards are accepted. Just call the Museum at 503-272-3301.

To get tickets from NWSCC Board Members, you will need cash or a check made payable to the NW Ski Club Council.

For tickets, contact: **Sheri Parshall**, [cougskier@aol.com](mailto:cougskier@aol.com) or **Debbi Kor**, [ijustwannarun1@comcast.net](mailto:ijustwannarun1@comcast.net) or **Gordon Lusk**, [GordyLusl@hotmail.com](mailto:GordyLusl@hotmail.com)

## Mt. Hood Museum Heritage Day



Heritage Day is an annual celebration of the history of Mt. Hood, and is usually marked by a series of events around the

Mt. Hood Museum, tours of Government Camp, a vintage car competition, and more.

This year, the Museum & Cultural Center has decided to support the NWSCC's 30th Anniversary Celebration in place of the Heritage Day.

The Mt. Hood Museum & Cultural Center will be the beneficiary of the proceeds from the Auction held at the 30th Anniversary Party. These funds will be used for numerous improvements at the Museum, such as:

- a) Adding an elevator for ADA accessibility to all 9,000 square feet of floor space.
- b) Creating more space for exhibits.
- c) The addition of a new "Clubhouse" gallery, which will showcase all the outdoor clubs that have called Mt. Hood home. Each club will have exhibit space to showcase their club's history.
- d) Expansion of the Museum's office and store.

So, remember, you can help the Mt. Hood Museum by attending the NWSCC 30th Anniversary event, and participating in the Auction (which will include trips to Vail, Sun Valley and Maui). See page 7 for details.

Also, remember to visit the Museum when in Government Camp. It is located just a few houses up the road from Huckleberry Inn (on the opposite side of the road). See: [www.mthoodmuseum.org](http://www.mthoodmuseum.org).

## Far West (FWSA) Travel

- **2009 Baltic Cruise, Scandinavia and Russia** September 13-23 on board the Princess Cruise line's Emerald Princess 17—24. For more information contact The Cruise Company at 1-800-274-FUNN for possible specials.

- **Keystone Nationals**—FWRA—January 27-29, 2010. The Keystone Nationals is a dynamic recreational race competition, open to all ski club and ski council racers of all ability levels, as eleven different competition classes are offered for both men and women. Contact **Bob Ellis** at 530.582-0566.

- **FWSA 2009 Ski Week** will be in Keystone, Colorado January 30 to February 6, 2010. Council Trip Leaders are taking sign-ups. Check the Keystone flyer on our web site or at [www.fwsa.org](http://www.fwsa.org) and click on travel.

- **Cortina Ski Trip**, February 27—March 7, 2010—\$1844 per person; Cortina, one of the most beautiful settings in the Alps; daily breakfast and dinner included; 7 nights at a 3+ star Splendid Venezia and round trip flight from SFO/LAX. Venice—Pre-Trip Extension \$575 February 24-28; Vienna/ Budapest—Post Trip Extension \$878. Contact **Norm Azevedo** at [fwsaitravel@sbcglobal.net](mailto:fwsaitravel@sbcglobal.net).

*Find more info about these and other ski trips planned for 2009-2010 on page 12 (a quick overview) or more detail on our web site at:*

[www.mthigh.org/Trips.htm](http://www.mthigh.org/Trips.htm).

## NWSCC Appreciation Night

The **Northwest Ski Club Council (NWSCC)** normally meets on the 3rd Wednesday of every month, at 6:00 pm, at the Buffalo Gap, 6835 SW Macadam Ave. Portland. But August is an exception.

On **Wednesday, August 19th**, a special meeting, called the "Appreciation Night", will be held at the home of Sheri and Dale Parshall, in Fairview, Oregon. All clubs should send their representatives to this meeting. See: [www.nwskiers.org/newsletter/indexMeeting.htm](http://www.nwskiers.org/newsletter/indexMeeting.htm)

## Our club -- NWSCC -- FWSA

Our Mountain High club is just one of about 30 clubs in the Pacific Northwest. Most of these clubs cooperate under the umbrella of the **Northwest Ski Club Council (NWSCC)**.

There are about a dozen similar Ski Councils throughout the West, all under the umbrella of the **Far West Ski Association (FWSA)**.

As members of Mountain High, we are also automatically members of the NWSCC and of FWSA.



## The Great Ski Pole Rescue Hike

- by Linda McGavin-



Many of you know Bruce and me as intrepid skiers who like to search out the steep and the deep, and this tale results from one of our adventures down the S&R Cliffs at Mt. Hood Meadows off the Heather chair. We had found some perfect powder turns which ended up on one of the cliffs, and a very narrow steep draw led to the Heather Canyon runout, with impassible cliffs on both sides. A slight mishap led to Bruce's pole sliding down about 20 feet into Clark Creek, followed by a bunch of sloughed snow from a snowboarder who came down the same way. We came back later and marked the spot with our GPS so we could look for the pole when the snow melted.

July 26 was the chosen day. Bruce's daughter, Tracy Petersen, joined us at the Hood River Meadows parking lot about 9 am, since Bruce wanted to try to walk up Heather Canyon to where the pole was last seen. The runout starts out with a field of blue lupine and a tiny path wending through it, which



Bruce McGavin enjoying deep powder at Meadows, just minutes before losing his pole.

soon disappeared. It turns out there isn't really any trail up Heather Canyon in the summer, and we found ourselves bushwacking the entire way.

Our trek led us through areas of waist high brush, up steep banks along the creek which sometimes forced us up into the woods, and scrambling over rocks along the creek when we could get down to it. Clark Creek in July is glacial runoff, ice cold, and really rushing along. It was really hard to locate the actual

Heather Canyon runout, as the creek apparently goes back and forth under it in places, and the winter snow smooths out what is really a very rough area. Near God's Wall the steep creek banks forced us uphill, and we had to cross that area holding onto twigs so that we didn't slip downhill. (It's SO much easier to ski down in the winter!) When we got close to where the

GPS showed we should seriously start looking, the creek ran right along the cliff, and we HAD to find a place to jump across it, bracing ourselves with our walking poles in the rushing water.



Linda McGavin and Tracy Petersen



Dang it! This is dustier and steeper than expected!



We walked upstream, and suddenly Bruce saw water flipping up over an orange basket! There it was, wedged into the rocks in the middle of the mainstream of Clark Creek - only about 40 feet from where it fell into the creek all those months ago. Several attempts to snag it didn't do any good, so Bruce took off both shoes and held onto a trekking pole with Tracy holding onto the other end, and was finally able to pull it free! He couldn't get out fast enough - his feet were frozen!

That was 4 hours into this hike, and we were on the other side of the creek. The rest of the adventure led us through swampy areas below Heather, a scramble up underneath the Heather Chair, again clinging to brush, hiking down to the Shooting Star chair and then up to the top of HRM. You would think the rest should have been easy because it's downhill, but again there were no trails, just very uneven ground and massive amounts of beargrass in bloom. The entire hike took 6-1/2 hours. The wildflowers at Meadows are magnificent, and it was a real adventure, but even so, we can truthfully not recommend that anyone try to hike up Heather Canyon in the summer!





**Club membership = 314      Newsletter Distribution**

The August 2009 issue is posted on our web site, and also:  
**369** copies sent via email (as PDF files)  
**34** paper printed copies sent via US Mail.  
 Copies are sent to potential members, other clubs, etc..  
**Please help us minimize the cost of mailing paper copies.**  
**Send your email address to: [info@mthigh.org](mailto:info@mthigh.org).**

**Mt. High Photos**

To find some relief from these hot, summer days, see our whole past year on our RECENT PHOTOS page at: [www.mthigh.org/ PhotosRecent.htm](http://www.mthigh.org/PhotosRecent.htm)



Ed Palmer, George Yun, Diane Zhitlovsky. Bill Maltby and Wally Taylor at Schweitzer Mountain.

Emilio Trampuz  
 Mountain High Newsletter editor  
 4742 Liberty Rd. S., #296  
 Salem, OR 97302

Please check our web site,  
[www.mthigh.org](http://www.mthigh.org)  
 for updates.

**Preview of Trips for next winter (2010)**

Based in part on the [trips survey](#) and other factors, here's how the next winter season is beginning to shape up. The dates are still a work in progress, but this is approximately what we are shooting for:

**JANUARY**

1. **Mystery bus trip.** Encouraged by the Survey, we'll shoot for a 3-day weekend, Jan. 14-17.
2. **Whistler cabin trip,** Jan. 24-30. 5 days/ 6 nights \$270
3. **FWSA Ski Week in Keystone, CO.** Jan 30-Feb.6.

**FEBRUARY**

1. **Train trip to Whitefish, MT ,**Feb. 17-20, 3 days/ 2 nights, with possible additional 2 night extension.
2. **FWSA International Week in Cortina, Italy,** Feb. 27 - March 7

**MARCH**

1. **Fernie/ Kimberley trip.** 4 days/ 5 nights if you fly, or 7 days/ 7 nights by bus. Around March 13-20.
2. **Heavenly/ Tahoe trip,** 5 days, probably around March 27 - 31.

**APRIL**

1. **Canada Ski Safari,** visiting 4 - 6 resorts, April 2 - 7.
2. **Far West Championships, Mammoth,** Apr.8-11.
3. **NWSCC Spring Fling, Mt. Bachelor,** Apr.16-18.

