



GEORGETOWN UNIVERSITY
ALUMNI ASSOCIATION



THE HEART of the MEKONG RIVER DELTA

Featuring the Mekong, Tonle Sap and Bassac Rivers

ABOARD *the* MEKONG PRINCESS

MARCH 18 – APRIL 2, 2016



AIR INCLUDED
IF PAID IN FULL BY OCTOBER 30, 2015



GEORGETOWN UNIVERSITY
ALUMNI ASSOCIATION

Dear Fellow Hoyas,

Travel with the Georgetown Travel Society from March 18-April 2, 2016 on a comprehensive 14-night journey through the heart of Vietnam and Cambodia, featuring a seven-night cruise along the mighty Mekong River. Travel aboard the 5-star Mekong Princess, a 12-suite luxury river cruiser specially built to ply the Mekong River. With no more than 12 guests per expert guide on each excursion, enjoy enriching lectures, and a comprehensive series of well-planned excursions.

In addition to the luxury river cruise, your itinerary includes a two-night stay in historic Hanoi, a three-night stay in Siem Reap including an in-depth visit to the UNESCO World Heritage site of Angkor Wat, and a two-night stay in bustling Ho Chi Minh City (formerly Saigon) featuring five-star centrally located hotels.

For those looking to extend their adventure, there is a two-night Hanoi/Ha Long Bay Optional Pre-Program Extension featuring the famed UNESCO World Heritage site of Ha Long Bay. The pre-tour includes an overnight cruise aboard a traditional 'junk' boat. There's also a three-night Bangkok Optional Post-Program Extension for those who wish to discover this cultural city with its grand palace and bustling canals.

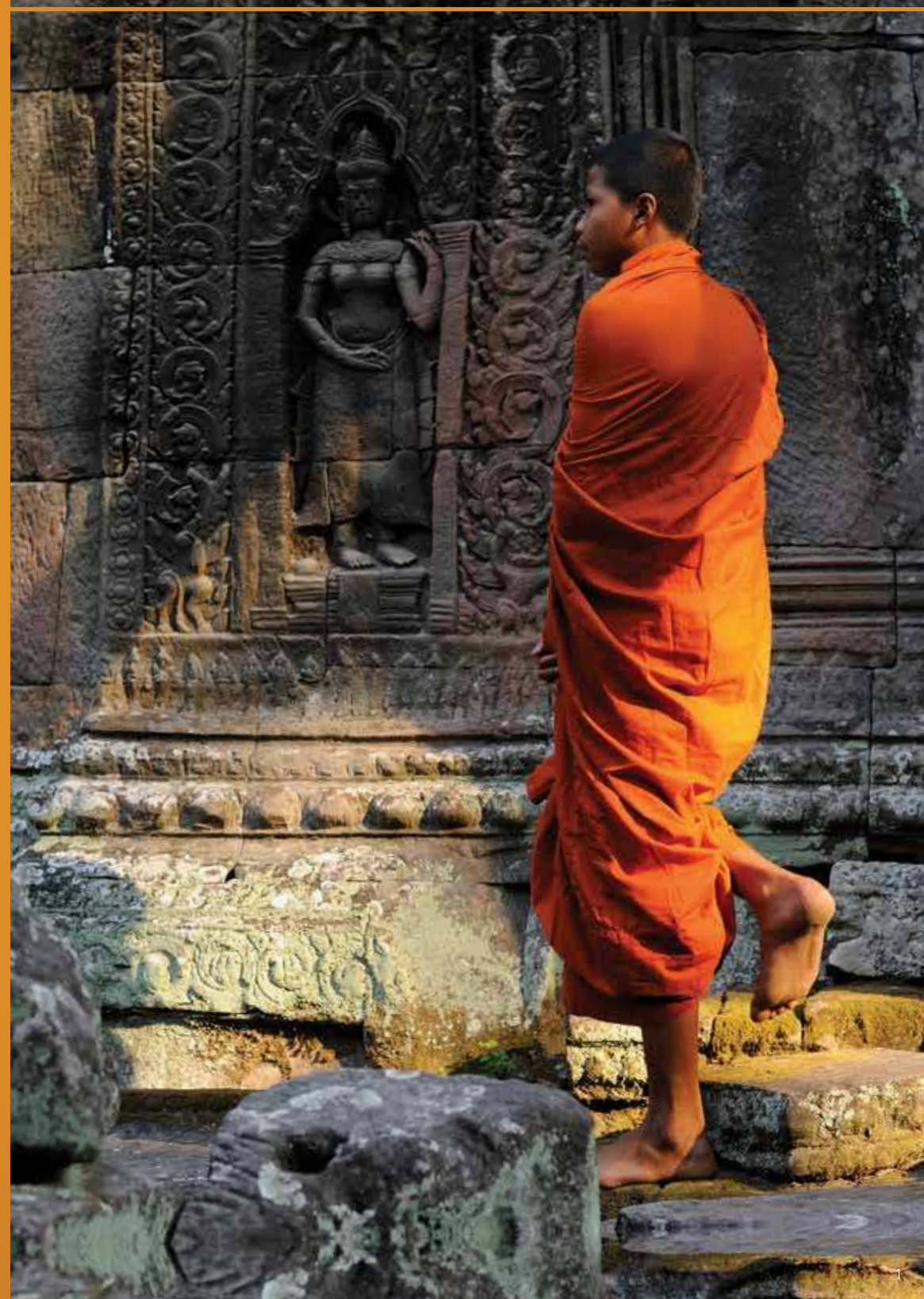
Participants will share this air-inclusive tour with alumni, friends and travelers from cosponsoring associations. Space is limited to just 24 guests so please contact the Georgetown Travel Society at 866-525-8664 or via email to georgetowntravelsociety@georgetown.edu for more details and to secure your place on this exciting tour to Vietnam and Cambodia!

Sincerely,

William G. Reynolds, C'79, Parent '10, '13
Executive Director
Georgetown University Alumni Association



“The Mekong River is a way of life for the people of Southeast Asia. In both rural areas and urban centers they live, work, eat, sleep, and even shop on her waters and along her shores.”





THE HEART of the MEKONG RIVER DELTA

Featuring the Mekong, Tonle Sap and Bassac Rivers

16 days from \$4,995, featuring a luxurious river cruise on the *Mekong Princess*, and deluxe hotel accommodations

Southeast Asia is known for the quiet simplicity of its rural regions and the dazzling indulgences of its major cities. Now, Haimark unites these two worlds with the introduction of the *Mekong Princess*, an innovative spa-concept vessel and the first of her kind to cruise the rivers of Asia. Built exclusively for luxury river cruising, the *Mekong Princess* masterfully navigates the remote distributaries of the Hau-Mekong River, visiting places so off the beaten path that locals find visitors as fascinating as we find them.

HIGHLIGHTS

Glide in sampans along a mangrove-lined canal and tour a family-owned coconut candy making operation near Ben Tre.

Enjoy privileged visits to family homes in Hong Ngu and a cultural exchange with weavers of the popular Khmer scarves.

Enjoy a rare cultural exchange with Khmer monks at the Loan My commune in Tam Binh, home of the ancient Ky Son pagoda.

Cruise upstream along the Tonlé Sap and enjoy a private excursion to the floating village at Kampong Chhnang.

Capture amazing photographs as you weave your way through the Cai Rang floating market near Can Tho.

Ride a cyclo through Phnom Penh to tours of the Royal Palace, the famous Silver Pagoda, and the fascinating National Museum.

Visit a local noodle-making factory and a family-owned fruit orchard.

Travel to Choeung Ek and see the Khmer Rouge Killing Fields, the memorial stupa, and Tuol Sleng (S-21 Prison).

Ride motorized trishaws to the Bang Lang Bird Sanctuary near the village of Thot Not.

Witness authentic Apsara dancing, performed by children from a local orphanage.

In Long Xuyen, visit a Cao Dai temple and a hatchery for endangered Siamese crocodiles.





16-DAY ITINERARY

Day 1 & 2

HANOI, VIETNAM

Depart from your home city on an overnight flight, arriving at the Hanoi airport, where you will be greeted by a Haimark representative, who will transfer you to the tranquil InterContinental Westlake Hanoi.

Day 3

HANOI

Visit the traditional, stilted home of Ho Chi Minh and One Pillar Pagoda, within the Ho Chi Minh Mausoleum complex, as well as Hanoi Prison (also known as the "Hanoi Hilton") during your morning city tour. After an included lunch, step into a cyclo for an exciting tour of the colonial area, ending your afternoon with a traditional water puppet show. This evening, enjoy a Northern Vietnamese Welcome Dinner with complimentary wine at one of Hanoi's most charming establishments, while a famous Vietnamese band provides traditional, live music. (B/L/D)



ONE PILLAR PAGODA – HANOI

Day 4

HANOI/ SIEM REAP, CAMBODIA

Enjoy free time in Hanoi to relax, shop, explore the city on your own, or treat yourself to a luxurious spa treatment at the hotel before your flight to Siem Reap (B)

Day 5

SIEM REAP

You'll begin your day at Angkor Wat, the most recognizable landmark in Cambodia, and the largest religious monument in the world, with the longest continuous bas-relief sculpture in existence, before enjoying lunch at a local Khmer restaurant. Tour the city center of Siem Reap by tuk tuk (motorcycle rickshaw), this afternoon for an introduction to Siem Reap's many dining and shopping options, and a stop at a traditional artists' workshop. (B/L)

Day 6

SIEM REAP

This morning, you'll visit Banteay Srey, considered to be the pinnacle of artistic achievement at Angkor, and Banteay Samré. In the afternoon, you'll see the temple of Ta Prohm, which has been overtaken by the jungle, with tentacle-like tree roots spilling over centuries-old walls and roofs, enveloping much of the structure. This evening, guests will enjoy a private dinner with Apsara show at a local venue. (B/D)

Day 7

SIEM REAP/PREAK KDAME/ EMBARKATION

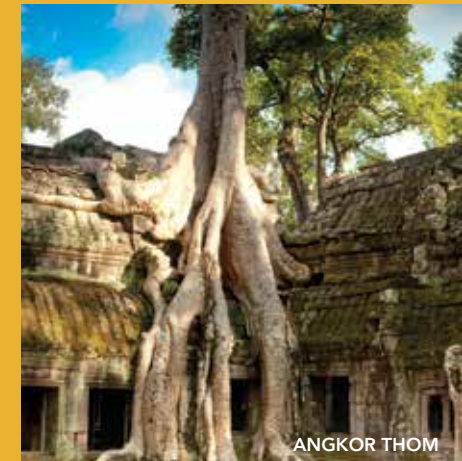
This morning's excursion encompasses the south gate of Angkor Thom, once the capital of the Khmer empire, and the pyramid temple of Bayon with its iconic carved heads, rumored to be faces of King Jayavarman VII. The morning ends with a walk around Baphuon Temple, the Terrace of the Elephants, and the moss-encrusted Terrace of the Leper King. After your tour, return to the hotel to refresh and check out. Enjoy a boxed snack while you travel to Preak Kdame, where you will board the luxurious Mekong Princess. To welcome you on board this evening, our culinary staff prepares a traditional Cambodian dinner. (B/L/Reception/Welcome Dinner)



ANGKOR WAT



APSARA DANCER



ANGKOR THOM



HO CHI MINH MAUSOLEUM

Day 8

TONLE SAP RIVER CRUISE/ KAMPONG CHHNANG

After an early morning of sailing along the Tonle Sap, you will board a private excursion boat and experience a panoramic cruise of the floating village at Kampong Chhnang. Villagers live, work, shop, and even attend church and school on the river. The return sail down the Tonle Sap provides a rare, up-close view of rural life in Cambodia, where children run down to the river to wave at the passing ships. Tonight the ship docks in Phnom Penh, and welcomes a local shadow puppet theater group for a performance and demonstration. (B/L/Cultural Performance/D)

Day 9

PHNOM PENH/OVERNIGHT

After breakfast on board this morning, meet your cyclo driver for an exciting city tour of Phnom Penh. You are transported by your driver along the riverfront to the Royal Palace complex, where you enjoy a leisurely walk through the grounds, viewing Throne Hall and Moonlight Pavilion, before visiting the famous Silver Pagoda, home of Cambodia's Emerald Buddha and Maitreya Buddha encrusted with more than 9,000 diamonds. Return to your cyclo for the short ride to the National Museum, ending the morning with a comprehensive tour of the many Angkorian and pre-Angkorian period

artifacts excavated at the Angkor Temple complex at Siem Reap. During your free afternoon in Phnom Penh, you may choose one of our optional excursions, or simply enjoy your time exploring Phnom Penh independently— shopping, sightseeing or relaxing in one of the city's many wonderful restaurants or pubs. Before dinner, children entertain you on the Sun Deck with a cultural performance including Apsara, Cambodia's national dance, and local, traditional folk dances. (B/L/Cultural Performance/D)

Day 10

BORDER CROSSING/ HONG NGU

Another unique stop awaits us today, with a call at a small island not far from the Vietnam-Cambodia border where, prior to the arrival of the Mekong Princess, the villagers had only encountered one western visitor! Here they make the traditional, checkered Khmer scarves that are exported to Cambodia. We'll see the weaving process as we visit several family homes and meet with local embroidery artists whose art is also on display. Our visit to this wonderfully friendly and welcoming village is sure to be one of your most lasting travel memories! Before returning to our sampans, we'll visit the local temple here, which is dedicated to another religion founded in Vietnam, Hoa Hao (pronounced wah how). Founded in 1939 as a reform of Theravada Buddhism, Hoa Hao simplifies Buddhist doctrine and rituals, and focuses on peasant farmers practicing in their homes, with aid to the poor replacing the funding of elaborate pagodas. (B/L/D)



LOCAL CHILDREN



WEAVING LOOM



FLOATING MARKET



ROYAL PALACE COMPLEX - PHNOM PENH





Nipa palm:

Nypa fruticans, commonly known as the nipa palm, is a species of palm native to the coastlines and estuarine habitats of the Indian and Pacific Oceans. It is the only palm considered adapted to the mangrove biome. The long, feathery leaves of the nipa palm are used by local populations as roof material for thatched houses or dwellings. The leaves are also used in many types of basketry and thatching. Large stems are used to train swimmers, as it has buoyancy.



SAMPANS, BEN TRE

Day 11

LONG XUYEN/THOT NOT

This morning, your sampans return to take you into Long Xuyen City. After a short walk around the river town, and through the market, you visit the Cao Dai temple and learn about this fascinating, Vietnamese religion that was founded as an amalgam of several different religions, in an effort to stop the infighting between the various followers. The morning excursion continues at a local crocodile farm, where you view and learn about the crocodiles that once inhabited the Mekong River, and how the farm raises and conserves this remarkable Asian wildlife. You will also be invited to sample a few of the restaurant's crocodile dishes.

Later this afternoon, your sampans take you to the village of Thot Not, where you transfer to a Vietnamese xe loi (motorized trishaw) that takes you through the village, where you begin to hear the cacophony of a bird sanctuary. After a short walk into the sanctuary, you climb the steps to the viewing platform, and enjoy an incredible view over the treetops and down on the nesting area of a variety of protected birds. (B/L/D)

Day 12

CAN THO/TAM BINH

Your sampans return early this morning before breakfast for a cruise through the fascinating Cai Rang floating market near Can Tho. The sampan will weave in and out of the many boats that sail into the market each morning to sell produce and other items the residents of the Mekong Delta need in their daily lives. As they weave through the market, you will have many opportunities for amazing photographs, while enjoying the Vietnamese "anti-aging drink," fresh coconut water. After the market visit, a stop is made at a local factory to see the amazing process of making instant noodles. Your final stop this morning is at a large, family-owned fruit orchard, where fruits native to Vietnam can be seen in various stages of maturity on the vine. After a fresh fruit tasting, you return to the ship for breakfast.

This afternoon, the ship sails through an area of the Mekong Delta barely touched by tourism to see Ky Son, an ancient Khmer pagoda. After a short visit, you have the chance to interact with the Khmer monks who fled to Vietnam during the Cambodian civil war. (B/L/D)



DRAGON FRUIT ORCHARD



FLOATING MARKET



HOME NOODLE FACTORY



EGRET SANCTUARY

Day 13

BEN TRE

Today, sampans take you through a channel lined with mangroves to visit a local coconut candy maker. After watching the candy-making process and walking through the family's orchard, a horse cart will take you on a 15-minute ride to a pier where you board small, local boats (two guests per boat) for a trip through the narrow creeks lined with Nipah palm before returning to the ship. This evening, we enjoy a Vietnamese Farewell Dinner as the ship sails into the heart of Ho Chi Minh City. (B/L/Farewell Reception/Dinner)



Day 14

DISEMBARKATION/ HO CHI MINH CITY

After breakfast, guests bid farewell to the Mekong Princess and her amazing crew, and transfer to Ho Chi Minh City, Vietnam. After a stop at your home for the next two nights, the tranquil Intercontinental Asiana Saigon, your city tour begins with the incredible French colonial architecture at Notre Dame Cathedral and the Central Post Office, followed by a visit to the Reunification Palace and War Remnants Museum.

Enjoy the rest of the afternoon and evening at your leisure to explore the city. (B/L)

Day 15

HO CHI MINH CITY

After a scenic drive outside Ho Chi Minh City, you will find the astonishing system of underground passages known as the Cu Chi Tunnels, which stretch to the Cambodian border. Following an above-ground tour of the area, learning about life in the tunnels, and an opportunity to enter a small section of the tunnels, you return to the city for lunch at one of Saigon's excellent restaurants, with time to explore the city on your own in the afternoon. A farewell dinner with complimentary wine at a renowned restaurant ends your Indochina adventure. (B/L/Farewell Dinner)

Days 16

HO CHI MINH CITY

Transfer to the airport for your flight home, or continue your journey with our optional, post-tour extension to exciting Bangkok, Thailand. (B)



CITY HALL, HO CHI MINH CITY



LOCAL FRUIT VENDOR



WAR REMNANTS MUSEUM



FLOWER MARKET

OPTIONAL PRE/POST EXTENSION PROGRAMS



HA LONG BAY, VIETNAM

2-night Hanoi/Ha Long Bay pre-program extension from \$695*

Per person based on double occupancy

Delve deeper into Vietnam's fascinating history and breathtaking beauty with an overnight cruise aboard a traditional "junk" boat, exploring the UNESCO World Heritage Site of Ha Long Bay, one of the world's greatest natural wonders. Enjoy a one-night stay in Hanoi, at the InterContinental Hanoi Westlake Hotel before your main trip.



BANGKOK, THAILAND

3-night post-program Bangkok extension from \$899*

Per person based on double occupancy

While you're in this corner of the world, why not add a stay in one of—if not the—world's most exotic cities? Our three-night stay in one of Bangkok's biggest and most modern hotels will put you right in the heart of the city, with easy access to all its myriad attractions. We also include a Chao Praya river cruise and visit to the Grand Palace.

*Price and hotel properties are subject to change.



Luxury Hotels

INTERCONTINENTAL HANOI WESTLAKE, HANOI, VIETNAM

The InterContinental Hanoi Westlake Hotel is a welcome retreat from the bustling city centre, located over the serene waters of West Lake, yet only minutes from Hanoi's Old Quarter. This luxurious urban resort offers tai chi lessons beside the outdoor pool. Savour fine cuisine at the hotel's Café Du Lac and Milan restaurants, and relax in contemporary guest rooms and suites with a large soaking bathtub, separate walk-in rain shower and spectacular views from your own private balcony.



VICTORIA ANGKOR RESORT & SPA, SIEM REAP, CAMBODIA

The five-star Victoria Angkor Resort & Spa provides a sense of serenity with the nostalgic comfort and elegant refinement of the French Art de Vivre in the heart of Siem Reap. Conveniently close to the Angkor Archeological Area, the quaint Old Market, and the dynamic night markets, Victoria Angkor has been designed in total harmony with its natural surroundings. All accommodations have wooden floors, colonial-style furnishings, and original artifacts, adding a warm touch of local culture, and open onto large balconies overlooking the saltwater pool set in lush, tropical gardens.



INTERCONTINENTAL ASIANA SAIGON, HO CHI MINH CITY, VIETNAM

InterContinental Asiana Saigon hotel offers 305 elegant rooms, individually-customized treatments at Spa InterContinental, and three international restaurants. This five-star luxury hotel is conveniently located in the city centre, close to Notre Dame Cathedral, Saigon Opera House, and Reunification Palace. The spacious and well-appointed rooms offer clean design, marble bathrooms featuring a walk-in shower and separate bath, as well as magnificent views of Ho Chi Minh City through floor-to-ceiling windows.



GRAND HYATT ERAWAN, BANGKOK, THAILAND

Grand Hyatt Erawan Bangkok is located in the heart of Bangkok and surrounded by prime lifestyle shopping centres, the business and diplomatic district, conveniently linked via sky bridge to two skytrain stations, and adjacent to shopping and commercial buildings. The hotel also offers free WiFi access, a spa, outdoor pool, ten bars and restaurants, live music in the lobby, and a 24-hour concierge service.





MEKONG PRINCESS

An innovative spa-concept vessel, and the first of her kind to cruise the remote reaches of the rivers of Asia



Featuring The Newly-Built Elegant Mekong Princess

STATE-OF-THE-ART DESIGN

The lowland countries of Vietnam and Cambodia offer an intoxicating blend of experiences all with one unifying theme, their dependence on the river. Flowing from the Lasagongma Spring high in the Tibetan Plateau through steep mountain gorges down to the South China Sea, the Mekong River is a way of life for the people of Southeast Asia. In both rural areas and urban centres they live, work, eat, sleep, and even shop on her waters and along her shores.

Onboard Amenities:

- French doors open onto a private balcony
- Spacious seating area, and writing desk
- King-size bed or two twin-size (that convert to a queen-size), with premium mattress, pillow menu, duvet, and linens
- Flat-screen television with on-demand movie system
- Universal docking station with alarm clock
- Minibar (complimentary)
- In-room electronic safe
- Multi-configuration plugs
- Individual climate control
- Spa-style soaking tub and separate shower (Angkor & Tonlé Suites)
- Hair dryer
- Luxury spa robes and slippers
- Bottled water
- Welcome flower arrangement and fresh fruit upon arrival
- Complimentary, one-hour, spa treatment per person, per cruise
- Daily butler service

Spacious Public Areas and Personalized Service

Onboard wellness activities, presentations, and exquisite dining experiences ensure every moment of every journey is nothing short of amazing. Talented spa professionals join an expert crew for a staff-to-guest ratio of greater than 1:1.



INDOCHINE DINING ROOM

Indochine Dining Room

Crisp, white tablecloths, ethereal wall murals, and dazzling chandeliers set the scene for magnificent dining experiences in the ship's Indochine Dining Room. Here, Culinary Director Jorg Penneke brings the onboard cuisine deliciously to life with his innovative fusion of traditional Southeast Asian cuisine and Western flavours. Using locally-sourced fresh herbs, fruits, and vegetables, some of which are rarely found elsewhere in the world, Chef Penneke's culinary team ensures each meal is a delight for all of your senses. Sumptuous breakfast and lunch buffets offer a variety of Southeast Asian dishes and Western favourites. Each evening, exquisite multicourse dinners are paired with select wines, gracious service, and lively conversation shared in the company of like-minded travelers.



Ramvong Lounge & Observation Deck

The indoor air-conditioned Ramvong Lounge is the perfect place to sink into an overstuffed sofa and take in a stimulating lecture, an afternoon movie, or a lively cultural demonstration. Pull up a seat at the bar and toast the day's adventures with perfectly mixed cocktails and exotic local spirits. Or curl up in a comfortable corner and read a copy of *The Quiet American*, *In the Shadow of the Banyan*, or *The Miracle of Mindfulness* borrowed from the ship's library. On the covered, outdoor Observation Deck, thick-cushioned chaise lounges, conversation seating areas, and ceiling fans create a cool space for enjoying a morning coffee, herbal tea, or quiet meditation while contemplating life along the river banks.



RAMVONG LOUNGE

Library & Internet Lounge

Sneak away to the onboard Library & Internet Lounge to delve further into the history and stories of the Mekong Delta. Choose from a thoughtfully assembled collection of books, including regional novels, geographic references, historic accounts, personal memoirs, and photographic journals. Use the ship's WiFi network to explore and send messages on your own devices. Or log on at one of the computer stations to check messages and send photos to loved ones back home.



OBSERVATION DECK

Spa & Wellness Center

Every guest aboard the Mekong Princess may enjoy one complimentary spa treatment during the cruise. Located on the main Mekong Deck, with floor-to-ceiling views, the Princess Spa offers the most extensive treatment menu of any ship on the Mekong River. Here, in an atmosphere of cool tranquility, skilled aestheticians and therapists pamper guests with a full range of massages, facials, scrubs, wraps, and customized treatments. Just next door, a fitness center with floor-to-ceiling windows offers daily yoga, tai chi, and meditation classes, as well as the opportunity to workout on state-of-the-art fitness equipment while you take in the passing scenery.



LIBRARY & INTERNET LOUNGE



SPA & WELLNESS CENTER



Elegant All-Suite Accommodations

Twelve magnificent suites spoil just 24 privileged guests with unparalleled personal space and soothing, French-colonial décor.

All-Suite Luxury Mekong Princess Features:

- French doors open onto a large, private balcony
- Generous closet space and under-bed storage
- Spacious seating area, and writing desk
- King-size bed or two twin-size (that convert to a queen-size), with premium mattress, pillow menu, duvet, and linens
- Flat-screen television with on-demand movie system
- Universal docking station with alarm clock
- Minibar (complimentary)
- In-room electronic safe
- Multi-configuration plugs
- Individual climate control
- Spa-style soaking tub and separate shower (Angkor & Tonlé Suites)
- Spacious spa-style rain shower (Saigon & Apsara Suites)
- Hair dryer
- Luxury honeycomb cotton, monogrammed, spa robes and slippers
- Bottled water replenished daily
- Welcome flower arrangement and fresh fruit upon arrival
- Complimentary, one-hour, spa treatment per person, per cruise
- Daily butler service, including:
 - Nightly turn-down service
 - Assistance with pillow menu and bathroom amenity selection
 - Explains on-demand entertainment system
 - Refreshes ice bucket
 - Polishes and conditions shoes, on request
 - Unpack and pack your luggage, on request

ANGKOR SUITES:

201–202 BASSAC DECK

- 496 square feet/46 square meters
- Large, private veranda with seating area
- Panoramic landscape views through floor-to-ceiling windows
- Fixed king beds
- Marble bath with large soaking tub and separate rain shower

Additional Amenities:

- Complimentary laundry service
- Complimentary evening canapés
- Scented bath preparation (upon request)

TONLE SUITES:

203–204 BASSAC DECK

- 306 square feet/28 square meters
- French Balcony
- Fixed king beds
- Marble bath with large soaking tub and separate rain shower

APSARA SUITES:

205–208 BASSAC DECK

- 234 square feet/22 square meters
- French balcony
- Two twin-size beds that can be converted to one queen-size bed

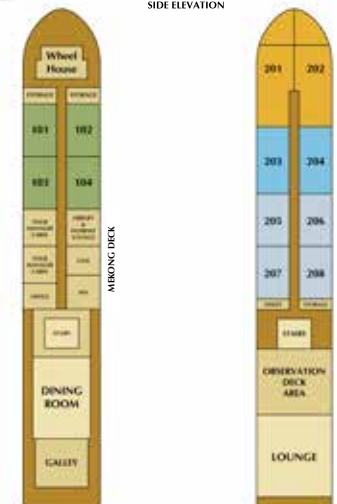
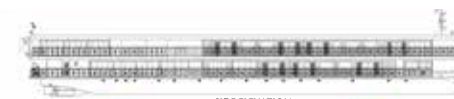
SAIGON SUITES:

101–104 MEKONG DECK

- 234 square feet/22 square meters
- French balcony
- Two twin-size beds that can be converted to one queen-size bed



Mekong Princess Deck Plan & Tariff Chart



2016 MEKONG PRINCESS TARIFFS

Based on double occupancy. Per person in USD.

15-NIGHT PROGRAM		
SUITE CATEGORIES	SAVINGS PRICE*	REGULAR PRICE
Angkor Suite	\$6,995	\$7,495
Tonlé Suite	\$6,795	\$7,295
Apsara Suite	\$5,695	\$6,195
Saigon Suite	\$4,995	\$5,495
Port charge \$199 per person		

*Program pricing includes economy air and is applicable if paid in full by October 30, 2015. Singles are available in the Tonlé Suite for \$8,795 and the Apsara Suite for \$8,095 if booked on or before October 30, 2015.

INCLUDED AIR GATEWAYS:

Atlanta, Boston, Chicago, Detroit, Houston, Los Angeles, Minneapolis, Montreal, New York, San Francisco, Toronto, Vancouver, Washington, DC - Dulles

*Program pricing includes economy air and is applicable if paid in full by October 30, 2015

TERMS AND CONDITIONS

IMPORTANT NOTICE

Terms and Conditions apply to all travel programs under Haimark Affinity Travel operation unless otherwise noted. Any and all information contained herein is in effect at the time of printing and is subject to change at any time and without notice.

Information contained in this brochure does not form part of any offer or contract. The transportation of guests and baggage on Haimark Affinity Travel vessels is provided solely by Haimark Affinity Travel and is governed by the terms and conditions printed on the Passage Contract. The Passage Contract will be included with your travel documents and contains complete and important information regarding cancellations, itineraries, Haimark Affinity Travel's liability, health and immigration requirements, and other relevant terms and conditions. The terms and conditions of the Passage Contract will apply to persons who have booked a travel program. Please read your Passage Contract carefully. To the extent that any of the information in the brochure conflicts with the terms of the Passage Contract, the terms and conditions contained in the Passage Contract shall control.

Itinerary arrival and departure times are always subject to change without notice. Haimark Affinity Travel reserves the right to cancel, alter, advance, postpone or substitute any scheduled departure or itinerary, substitute the scheduled ship for another vessel, or substitute or cancel scheduled ports of call, which, in its sole judgment and discretion, is justified for any reason, and to do so without liability for any loss whatsoever to guests as a result of said changes. Additionally, Haimark Affinity Travel reserves the right to cancel reservations and bookings in the event of a full-ship charter, whether or not a deposit or full payment has been received, and in such event, Haimark Affinity Travel's only liability will be to refund to the guest the amount it has received.

Haimark Affinity Travel makes arrangements for transportation, other than cruise passage, only as a booking agent. Haimark Ltd.'s responsibility does not extend beyond the vessel. In arranging for the transportation of guests to and from the ship, Haimark Affinity Travel does so with independent contractors. Haimark Affinity Travel is not responsible for incidents such as airline cancellations, re-routings or any disruption of scheduled services or accommodation, or lost luggage.

All schedules, fares, and terms and conditions listed in this brochure are effective as of April 2015 and supersede any schedules, prices, and terms and conditions previously published.

All fares indicated in this brochure including land and hotel, are capacity controlled, subject to change at anytime without notice and do not guarantee availability. All are subject to change and/or cancellation without notice.

Travel documents will not be dispatched until full and final payment and passenger Contact Information has been received by Haimark Affinity Travel and cleared. For purposes of this Agreement, Contact Information shall mean a passenger's full name, passport number, address, telephone number (land and mobile), electronic mail address and emergency contact information and any other information as requested by Haimark Affinity Travel. Haimark Affinity Travel must be able to reach each passenger's emergency contact at any time of day. Haimark Affinity Travel must, therefore, be provided with all information to allow Haimark Affinity Travel to do so (such information should include the name, address, electronic mail address (if available) and phone number (including a cell phone number if available) of a parent, guardian, spouse, domestic partner, or other person to contact in the event of an emergency. No passenger will be allowed to embark a Haimark Affinity Travel vessel unless Haimark Affinity Travel has received and cleared all information.

PROGRAM TARIFF

2016 program fares cover certain shipboard services including: suite accommodations, shore excursions, onboard meals and entertainment, complimentary beverages aboard ship (including select free-flow house wines for dinner, and locally produced spirits and beer, soda, water, coffee and tea throughout the cruise).

All fares are quoted in US dollars, are per guest and based on double occupancy. Included in your tariff: internal air, hotel accommodations, excursions and meals as per the itinerary. Not included in your cruise tariff are: international airfare (unless participating in complimentary air program), additional hotel accommodations, optional excursions, meals ashore, shipboard and Tour Manager gratuities, port charges, imported mineral waters and sodas, fuel surcharges, laundry, purchases from the ship boutique or any item or service of a personal nature. Champagne, imported beer, premium wine and spirit selections are not included in your fare and may not be available.

AFFINITY MARKET SPONSORS

Affinity Market Sponsors are considered to be the agent of Passenger and not of Carrier. Carrier is not liable for any representation, act or omission of Passenger's travel agent. Passenger's cruise fare is not considered paid until Carrier receives full payment, and the amount thereof is subject to change at any time prior to Carrier's receipt of payment. Passenger shall at all times remain liable to Carrier for the price of passage. Carrier reserves the right to refuse embarkation if all charges and surcharges have not been paid in advance of departure.

DEPOSIT/FINAL PAYMENT

To reserve your program, a \$850 non-refundable deposit is required at the time of booking (plus \$250 per person per extension). Full payment is due no later than 120 days prior to departure. Final documentation will be issued after receipt of final payment and approximately 21 days prior to departure. All reservations are subject to cancellation if payments are not received by the due date, and are guaranteed only when paid in full 120 days prior to departure. Reservations made within 120 days of departure require full payment within seven days of booking or sooner, as specified by Haimark Affinity Travel Payments may be made by personal cheque (USD funds), or by VISA®, Discover®, or MasterCard®.

CANCELLATIONS/REFUNDS

Should you find it necessary to cancel your advanced reservation booking or any component thereof, you and/or your affinity market sponsor is required to contact Haimark Affinity Travel in writing to submit your cancellation.

If your cancellation request is received more than 120 days prior to your initial sailing date, a \$850 non-refundable administrative fee will be charged per booking. This administrative fee may be not converted to a future program credit.

Program cancellation requests received within 120 days of the initial departure date will be subject to the following charges, regardless of suite resale: 120 – 91 days prior to the initial departure date: 50% of the total program fare per person 90 – 0 days prior to the initial departure date or non-appearance at the time of departure: 100% of the total program fare per person.

PRE/POST EXTENSION PROGRAM CANCELLATIONS

120 – 61 days prior to the initial departure date: \$250 per person; 60 – 0 days prior to the initial departure date: 100% of the extension program per person cost.

HEALTH AND MEDICAL REQUIREMENTS

All guests are required to report in writing to Haimark Affinity Travel at the time their reservation is made:

1. Any physical or mental condition that may require medical or professional treatment or attention during travel program
2. Any condition that may render the guest unfit for travel, or that may require special care or assistance
3. Any condition that may pose a risk or danger to the guest or anyone else throughout the travel program
4. Any condition that may require oxygen for medical reasons
5. Any intention or need to use a wheelchair cart, other mobility device

By booking passage on this travel program, the guest represents and warrants that he/she is physically and otherwise fit to travel, and that the guest will comply at all times with applicable rules and regulations of the ship and orders and instructions of the ship's officers.

Haimark Affinity Travel reserves the right without liability to require a guest to disembark and/or to refuse to board and transport a guest who, in the judgment of Haimark Affinity Travel or the ship's Captain, is unfit to travel or may require care beyond that which Haimark Affinity Travel is reasonably able to provide.

Haimark Affinity Travel strongly recommends that guests are able to navigate any stairs or staircases without assistance. Should guests require assistance, they must travel with someone who is able to assist them both ashore and on board. Haimark Affinity Travel is unable to offer special assistance. Please note that wheel-on and/or wheel-off access is not available at ports-of-call.

AIR BOOKING

Names as they appear on passport are necessary for air bookings; air cannot be booked without full guests information and payment; in case of a name error, a new ticket at the guest charge may be needed.

BAGGAGE

You may bring a reasonable amount of clothing and personal effects without charge. Baggage for Haimark Affinity Travel guests or guests on our land programs must be handled in accordance with regulations of our ground operators. Baggage exceeding these limitations is subject to the charges as set forth by the individual operators. Airlines are strict with baggage limitations. Guests are encouraged to contact individual airlines for weight limitations.

All baggage must be securely packed, and properly and clearly labeled. Liquid, fragile, perishable and other articles not suitably packed are transported at your own risk. Haimark Affinity Travel is not responsible for loss or damage to baggage or any other personal item during air travel or land programs. Baggage and personal belongings will be taken off the ship upon guest disembarkation. Under no circumstances will baggage be stored on board without the owner of such baggage being on the vessel. Haimark Affinity Travel is not responsible for baggage stored in shore side facilities.

Under no circumstances may dangerous items (including but not limited to: explosives, firearms, combustible or illegal substances) be taken on the travel program. We recommend that you hand-carry travel documents (passport, visa, cruise tickets), medications and valuables. These items are the full responsibility of the guest at all times. Haimark Affinity Travel shall not be responsible for the loss of, or damage to, such personal items.

LOST PROPERTY

Haimark Affinity Travel may levy a charge for the return of personal items left behind on the travel program or lost and subsequently found.

TRAVEL DOCUMENTS

Cambodia requires a tourist visa. Vietnam requires a multiple-entry visa to participate in this program. All travel documents (air and cruise tickets, passport and medical insurance information) are the guest's responsibility. It is also the guest's responsibility to obtain any necessary visas and public health documents for all applicable ports and to comply with all customs requirements. Without the required documents, a guest may be denied boarding and accommodation by Haimark Affinity Travel or the guest may be disembarked during the voyage and Haimark Affinity Travel will not make a refund or be otherwise liable to any guest for such denial of boarding or disembarkation.

In the event that Haimark Affinity Travel as a courtesy provides information or advice as to necessary travel documents, visas and medical inoculations, guests are still obligated to verify such information with the appropriate government authorities and Haimark Affinity Travel does not warrant or guarantee the accuracy of such information.

Please check with the appropriate consulate for specific requirements. Security measures imposed by governments may change from time to time and each guest will be required to comply with them. As a courtesy, we will endeavor to provide each guest with notice of measures that may affect them, but complying with any such requirements is the sole responsibility of each guest. Please consult your travel professional for advice on such requirements to avoid loss of boarding privileges.

TAXES, GOVERNMENT FEES/QUASI-GOVERNMENT FEES AND FUEL SUPPLEMENTS

Haimark Affinity Travel reserves the right to pass through to its guests (including fully paid and deposited guests) any taxes and government fees/quasi-government fees that relate specifically to a guest's itinerary. "Taxes and Government fees/quasi-government fees" include any and all fees, charges, surcharges, tolls and taxes imposed by governmental or quasi-governmental authorities including, but not limited to, customs fees, fuel supplements and surcharges, per person berth taxes or fees, embarkation and/or disembarkation fees at ports, airline transportation fees, dockage fees, and wharfage fees.

Haimark Affinity Travel reserves the right to charge a per-person fuel supplement in the event that eventual price increases for fuel up to and including the day of embarkation require Haimark Affinity Travel to collect a fuel supplement from passengers. Haimark Affinity Travel may collect any taxes, government fees/quasi-government fees and fuel supplement (the "Surcharges") at the time of booking, prior to sailing or on board the vessel, even if the cruise fare has been paid in full. Surcharges will be invoiced accordingly.

All fares, and itineraries are subject to change without notice. Additional restrictions may apply. Haimark Affinity Travel reserves the right to correct any errors or omissions.

This brochure may contain inadvertent technical or factual inaccuracies and typographical errors. Haimark Affinity Travel reserves the right to correct errors and omissions at any time without prior notice, and to cancel any offered product, service, amenity, etc. in the event of any error or omission in the description, including pricing and availability.

REGISTRATION: CST# 2118210-40

— HAIMARK —
Affinity Travel

THE HEART OF THE MEKONG RIVER DELTA MEKONG PRINCESS – RESERVATION FORM

March 18–April 2, 2016

SEND TO:

Georgetown Travel Society
151 Railroad Avenue, Unit D
Greenwich, CT 06830

Toll Free: 866-325-8664

Fax: 203-724-0844

Email: GeorgetownTravelSociety@Georgetown.edu
http://alumni.Georgetown.edu/TravelSociety

PLEASE MAKE MY/OUR RESERVATION FOR:

LAND/CRUISE PROGRAM WITH COMPLIMENTARY ECONOMY AIRFARE (pay in full by 10/30/15)

Please indicate preferred departure city: _____ (Airfare and availability is subject to change and is nonrefundable. Complimentary economy air from select gateways only).

Economy Class Business Class (Additional cost.) First Class (Additional cost.)

I/We will make my/our own air arrangements (Air credit, \$950 per person—subject to change.)

SUITE CATEGORY REQUESTED: 1st Choice: _____ 2nd Choice: _____

Bed request: Twin (2 beds) Queen

Single accommodations are at additional cost and subject to availability. (See tariff chart.)

Request: Single: 1st Choice: _____ 2nd Choice: _____

Please reserve _____ space(s) for the OPTIONAL HANOI & HA LONG BAY PRE-CRUISE EXTENSION, \$695* per person, double occupancy. Single supplement \$295* and subject to availability.

Please reserve _____ space(s) for the OPTIONAL BANGKOK, THAILAND POST-CRUISE EXTENSION, \$899* per person, double occupancy. Single supplement \$375* and subject to availability. **Internal Flights Additional*

All passengers must travel with a passport valid at least 6 months beyond their return date.

Guest 1: Full Legal Name (as it appears on your passport)

TITLE	FIRST	MIDDLE	LAST
-------	-------	--------	------

EMAIL ADDRESS	PREFERRED NAME ON BADGE	BIRTH DATE
---------------	-------------------------	------------

Guest 2: Full Legal Name (as it appears on your passport)

TITLE	FIRST	MIDDLE	LAST
-------	-------	--------	------

EMAIL ADDRESS	PREFERRED NAME ON BADGE
---------------	-------------------------

BIRTH DATE

Mailing Address: _____

City: _____ State: _____ ZIP: _____

Home Ph: _____ / _____ Cell: _____ / _____

Roommate (if different from above): _____

DEPOSIT AND FINAL PAYMENT: A deposit of \$850 per person (plus \$250 deposit per person for each Pre- and/or Post-Cruise Extension, if applicable) is due with your reservation application. Make checks payable to Haimark Affinity Travel. To participate in the complimentary air program, full payment must be received by October 30, 2015, otherwise final payment is due November 19, 2015 (120 days prior to departure). Reservations received after this date must be accompanied with full payment at the time of booking.

Please reserve _____ space(s). Enclosed is my/our deposit for \$_____.

Deposits and FINAL payments may be made by personal check, MasterCard, Visa or Discover. Make checks payable to Haimark Affinity Travel.

Accept my check made payable to Haimark Affinity Travel.

Charge my: MasterCard Visa Discover

Card # _____ CVV# _____ Expires _____ / _____

SIGNATURE AS IT APPEARS ON CREDIT CARD

Making a deposit or acceptance or use of any vouchers, tickets, goods or services shall be deemed consent to and acceptance of the terms and conditions stated in the applicable Terms and Conditions agreement, including limitations on responsibility and liability. All prices listed in USD.

MP160318-16
CST#2118210-40



THE HEART of the MEKONG RIVER DELTA

Featuring the Mekong, Tonle Sap and Bassac Rivers

ABOARD *the* MEKONG PRINCESS

MARCH 18 - APRIL 2, 2016



GEORGETOWN UNIVERSITY
ALUMNI ASSOCIATION

Georgetown Travel Society
151 Railroad Avenue, Unit D
Greenwich, CT 06830

AIR INCLUDED
IF PAID IN FULL BY OCTOBER 30, 2015

