



Our activities can help learners, confident individuals, responsible citizens and effective contributors to society



thousands of years ago.

Big floods and storms leave large silt deposits and these can be seen as thick mud layers. By looking at them, scientists can tell what happened many

where it adds to the mud. This has been going on for the last 10,000 years. carried by fast-moving water and when the water flow decreases it falls to the bed The river and sea tide bring silt (fine soils and other materials) to the estuary. Silt is

Mud history

Mud is brown on the surface and black underneath. Exposure to the air (oxygen) turns the mud brown. Even as a worm digs down into the mud, the sides of the tunnels will begin to turn brown.

Amazing mud

Montrose Basin covers 750 hectares of mud, the size of 1,500 football pitches.

— others, like worms, have no protection.

Scientists call them invertebrates. Some have hard or soft shells

one thing in common: they have no skeletons or bones.

Mud creatures are well adapted to life below the surface. Most have

Mud life



sediment. Water is expelled through the other. tube that "hoovers" the surface of nutrient-rich

Tellin burrow through mud and sand. They have paired siphon tubes, one of which is a long mobile



Lugworms swallow mud and then extract food from it. The mud passes through their bodies and appears as worm-shaped piles in the sand.

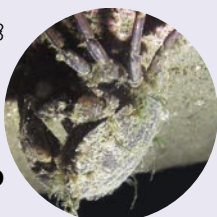


Sea slaters live in the inter-tidal or "splash" zone on the foreshore and are marine woodlice. Their antennae are about two-thirds of their body length and they have 14 legs. They feed on detritus or decaying matter.



Classwort is one of the many plants in the mud that provide food for other creatures, like *Hydrobia*.

Crabs grow feathery hair across their breathing areas. This stops the fine particles of mud and silt getting into their airways.



Ragworms are hunters and scavengers. They have powerful jaws which are normally hidden in their inverted mouth parts. They have an obvious dorsal blood vessel forming a red line down their back.



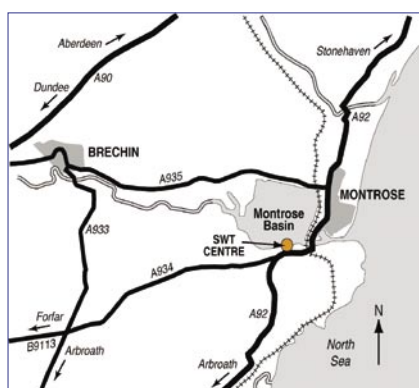
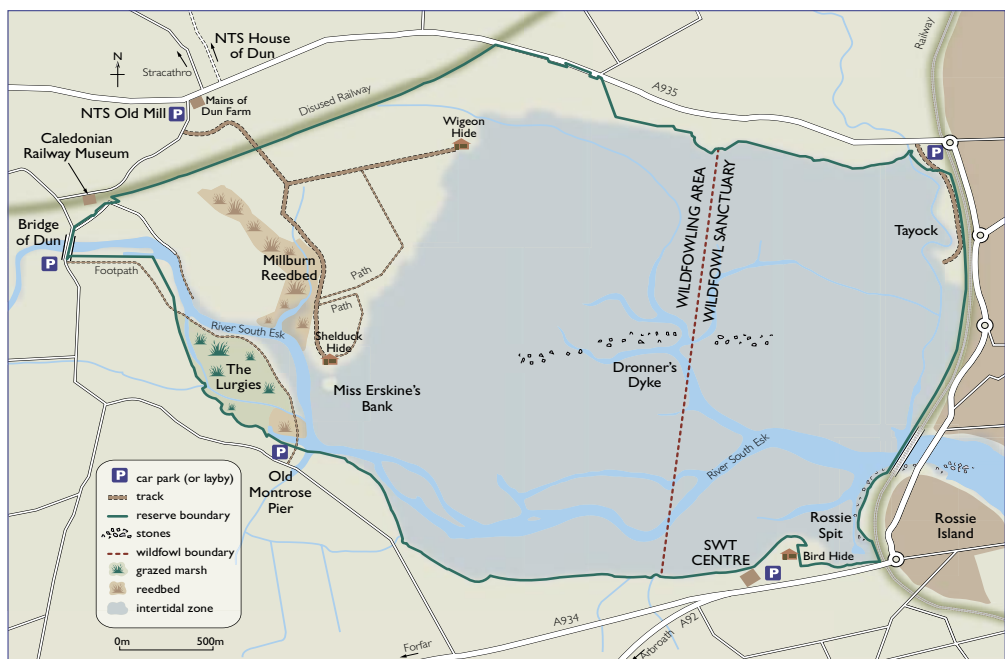
Mussels drink large amounts of water and filter out microscopic food particles.

Corophium spp. get their food by sorting through the grains of mud with their antennae.

Mud-loving species

Montrose Basin Visitor Centre & Wildlife Reserve

Scottish Wildlife Trust, Rossie Braes, Montrose, Angus DD10 9TJ
tel: 01674 676336 email: montrosebasin@swt.org.uk



By car
On the A92 Montrose to Arbroath road just 1 mile (1.6 km) south of Montrose. Follow the brown signs to Montrose Basin Wildlife Centre. Free and convenient parking available.

By train
Frequent services from Edinburgh, Glasgow, Aberdeen and all intermediate stations.

By bus
From Montrose town centre to Ferryden, then a short walk.

Special provision
The visitor centre is wheelchair friendly including toilet facilities. An induction loop is fitted. Free parking and spaces available for coaches.

Admission
Adults (concessions) £3.00 (€2.00)
Family ticket (2 adults with up to 4 children) £6.00
SWT members FREE
10% discount for groups of 11 or more
Access to the reserve is free.

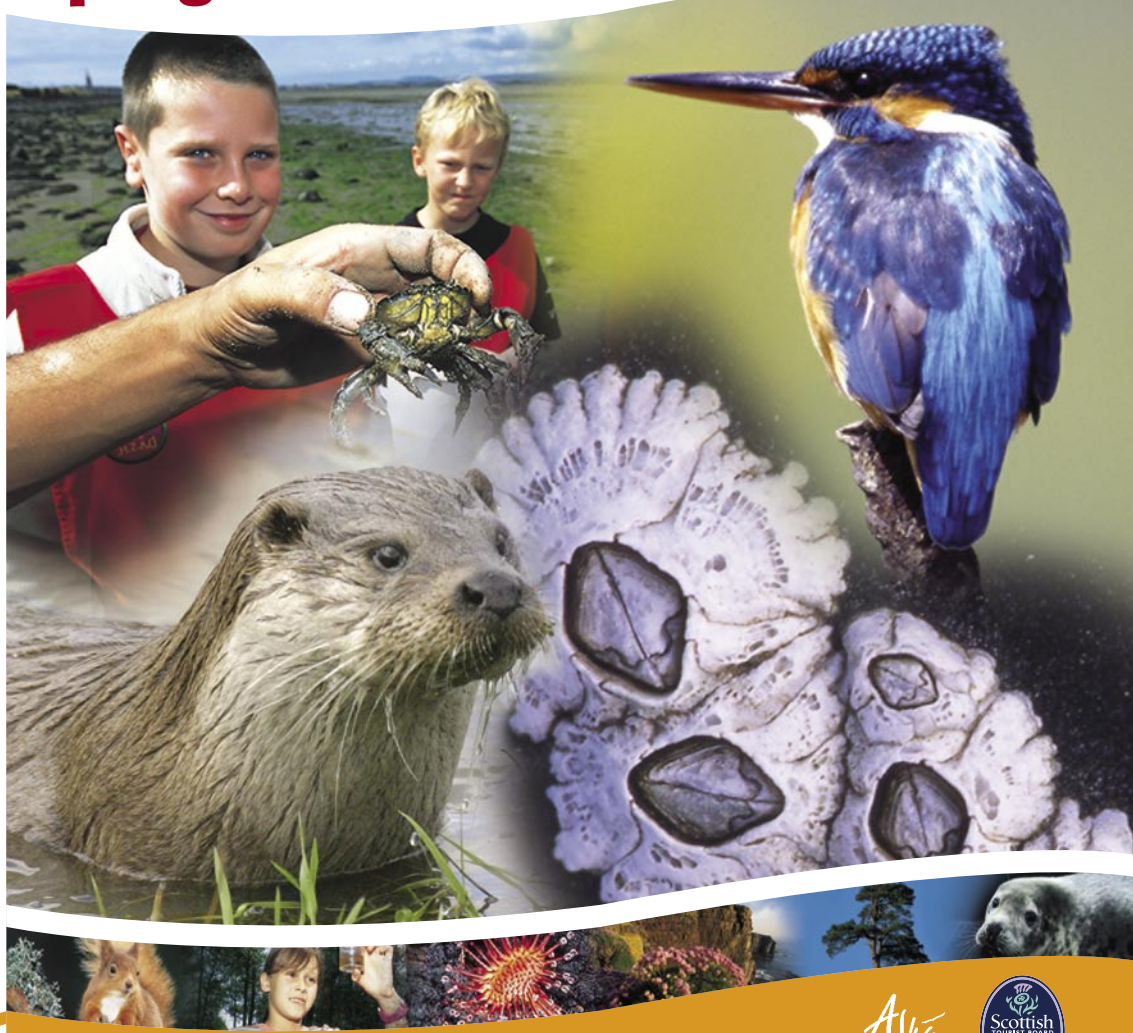
Schools education programme activities
Half day from £3.00, full day from £4.50

Opening times
Open daily: 15 March – 15 November from 10.30 am – 5.00 pm
16 November – 14 March (Friday – Sunday) from 10.30 am – 4.00 pm.
The visitor centre is closed on 25 and 26 December and 1 and 2 January.

Our education programme is available all year round.

Montrose Basin Visitor Centre & Wildlife Reserve

Schools education programme



Photography: Niall Benwie, Graham Burns, Graeme Cresswell, AD Johnson, Darin Smith, Elaine Whiteford
www.sublimescubaphotography.com

Printed on environmentally friendly stock.

Scottish Wildlife Trust, Camond House, Camond Glebe Road, Edinburgh, EH4 6NS
Tel: 0131 312 7765 • Fax: 0131 312 8705 • Email: enquiries@swt.org.uk
Scottish Wildlife Trust is a registered charity (No. SC005792)

Prices and membership rates correct at time of print.
2007



Protecting Scotland's wildlife for the future
www.swt.org.uk

Montrose Basin Visitor Centre & Wildlife Reserve Schools education programme



Learning beyond the classroom offers pupils the opportunity to gather real evidence and enjoy sampling and interacting with their environment in a controlled way.

Activities available

ACTIVITY	WHAT'S INVOLVED?	5-14 CURRICULUM	LOCATION
Mud studies	Venture onto the estuarine mud to discover and examine the many creatures that make it their home.	Interaction of living things with their environment	Montrose Basin Visitor Centre
Bird identification	Identify the birds of the Basin through telescopes, binoculars and interpretative displays.	Interaction of living things, environment and identification	Montrose Basin Visitor Centre
Migration	Find out why some birds undertake long and hazardous journeys to reach the Basin.	Interaction of living things with their environment and population	Montrose Basin Visitor Centre
Adaptation	Size matters! Investigate unique adaptations of birds such as beak and feet.	Interaction of living things, habitats and limiting factors	Montrose Basin Visitor Centre
Food webs	Investigate the links between all living things and their interdependence.	Interaction of living things, energy transfer and environment	Montrose Basin Visitor Centre House of Dun
Mini beasts	Discover the many different kinds of creatures to be found in vegetation and under logs and stones.	Interaction of living things with their environment	Montrose Basin Visitor Centre House of Dun
Sensory activities	Encourage younger children to appreciate colours, textures, smells and sounds around them.	Observation, social and science studies	Montrose Basin Visitor Centre House of Dun
Agriculture and things that grow	Investigate how agriculture and food production co-exists with wildlife and conservation. Also look at plants to discover how they grow, disperse seeds and provide a vital source of food.	People and places, variety and characteristic features, and life processes	Montrose Basin Visitor Centre House of Dun
Woodland activities	Identify trees and get to know more about them.	Variety and characteristic features	House of Dun
Pond dipping	Discover the variety of creatures that have made our purpose-built pond their home.	Interaction of living things, habitats and limiting factors	Montrose Basin Visitor Centre

Simply complete this enquiry form and either fax to: **01674 678773** or post to "Schools education programme, Montrose Basin Visitor Centre and Wildlife Reserve, Scottish Wildlife Trust, Rossie Braes, Montrose, Angus DD10 9TJ" and we will get in touch to discuss your specifications.

Please complete using **BLOCK** capitals.

Your name:

Telephone number: Fax number:

Email:

Name of school or organisation:

Address:

..... Postcode:

Date of visit: Half day Full day

Arrival time: Departure time:

Number of children: Age of children:

Number of adults: Is free coach parking required? Yes ..No

I am interested in the following:

- Mud studies.....
- Bird identification.....
- Migration.....
- Adaptation.....
- Food webs.....
- Mini beasts.....
- Sensory activities.....

- Agriculture and things that grow.....
- Woodland activities.....
- Pond dipping.....
- Where did you hear about Montrose Basin's schools education programme?
At the visitor centre.....
- From a leaflet.....

- From SWT's website.....
- Other (please specify).....
- If you do not want to be on our mailing list to receive future schools education programme information, please tick this box
- SWT will use this information in accordance with the Data Protection Action. By entering into this agreement, you consent to receiving information from SWT of related activities. SWT will not share your details with third parties.

ARRANGING YOUR VISIT

Our schools education programme is available **all year round**. As a guideline a charge of £4.50 per person is requested for a full day of activities, £3.00 per person for a half day. A reduced rate is available for affiliated groups.

We provide a safe environment with the chance for children to learn more about wildlife and the environment in an interesting, informative and fun way.

- We have a team of teacher naturalists who will lead all the educational activities throughout your visit.
- We will plan your visit to suit the requirements of your class topic and customise activities at no extra charge.

Why not combine some of the activities listed and compare different habitats?

Our facilities include:

- indoor education room with "wet" area and children's low-level sinks
- educational dipping pond
- visitor centre with specially designed interactive displays
- three bird hides offering superb views of the wildlife-rich surroundings
- viewing gallery with high-powered telescopes and binoculars
- gift shop with great souvenirs
- specially created man-made sand martin bank
- refreshment area
- disabled access and facilities
- free car and coach parking (including a coach parking lane)



Contact the visitor centre on 01674 676336 where staff will be happy to discuss your visit or arrange a booking. Alternatively simply complete and return our enquiry form (left).

Look out for our holiday activities for children. Pick up a copy of our events programme from the visitor centre.