

Join us at

FABTECH 2015
November 9-12
Chicago, IL

Booth #S93 I



And at our **Open House**

November 9 & 10
6 - 9 p.m.



Machines at FABTECH

Booth # S93 I

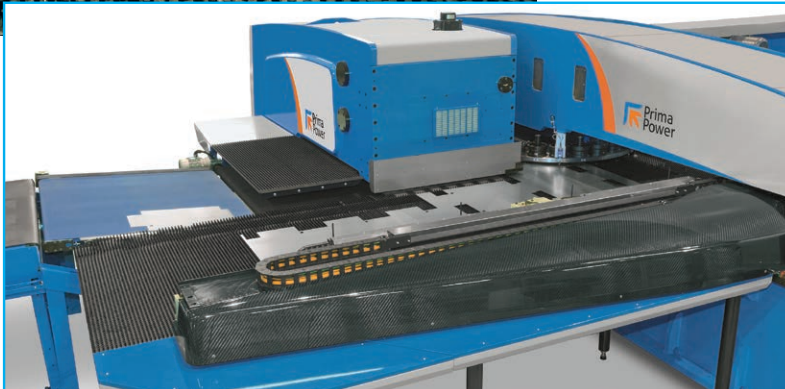
Experience tomorrow's sheet metal fabrication technology...today.



Shear Brilliance SBe

Prima Power pioneered the integrated punching and shearing combination machine in the late 1980's. Include a visit to our booth in your show plans to discover why thousands of fabricators have utilized this technology to:

- Triple their productivity
- Tighten up their fabricating tolerances
- Increase their material utilization through common line cutting and elimination of skeletons
- Process a full sheet, up to 60" x 161" without repositioning
- Be the core process to automate their fabrication from raw material through completely formed product, eliminating non-value added handling, reducing WIP and driving up their profitability.



The Shear Brilliance has been revolutionized by servo-electric technology, the latest composite

materials and linear drives to achieve a new level of performance. *This is a machine all fabricators must see!*

eP Servo-Electric Press Brake

Upper beam deflection under load is eliminated in the Prima Power eP Model Press Brake and, therefore, the need for bed crowning. The closed frame eliminates side housing deflection as experienced with C-frame designs. The servo electric drives of the eP model brake evenly distribute the bending forces in the upper beam to provide improved bending accuracy, increased productivity, lower operating costs, high reliability and fewer maintenance requirements. *Experience bending like never before with this Prima Power servo-electric brake.*



It's Not Magic, Just Prima Power Technology

Prima Power has introduced many new technologies to the sheet metal fabrication market such as punch/shear and punch/laser combinations, Multi-Tool, Auto Index, servo-electric bending and turret punch presses, etc,

At FABTECH 2015 we will once again astonish the industry with a revolutionary new laser product. You do not want to miss this! It will totally change what you think you know about lasers...



Machines at Open House

November 9 & 10
6-9 p.m.

Shear Genius SGe

The Shear Genius, integrated punch/shear combination was introduced in 1987 and soon became the standard for sheet metal productivity.

The heart of the newest Shear Genius is the servo-electric 30 ton turret punch press with 1000 hpm stroke speed, 250 rpm indexing rotation, and 150 m/min positioning speed. The integrated right-angle shear has a servo-electric drive of its own that is both fast and fully



controlled for short and long strokes. Automated loading and unloading of finished parts is standard in the SGe to keep up with this highly productive combination. Multiple automation modules are available to design a Flexible Manufacturing Cell for or according to the desired process flow. The Prima Power SGe is a workhorse in even the most demanding applications: up to 5 mm (AL), 4 mm (MS), and 3 mm (SS). It has a proven reputation for outperforming 2 or more punching machines with better quality and lower costs. *Stop by to learn what the SGe can do for your company!*

Servo Electric Technology

Starting with systematic development of servo-electric machine tools in mid-nineties, Prima Power has widened the range continuously and now extends this technology to the integrated right-angle shear. The heart of the new servo-electric Shear Genius SGe is an updated servo electric 30 ton punching machine with 1,000 hpm stroke speed, 250 rpm index speed and 150 m/min sheet positioning speed. The right angle shear has a servo electric actuation system of its own, which makes shear movement at the same time both fast and fully controlled; this equals optimization for maximum productivity. Material thickness in shearing can be up to 5 mm (AL), 4 mm (MS) and 3 mm (SS). Automatic loading has been integrated, and in addition part removal and sorting are automatic.

FASTBEND FB_e

The FASTBEND excels in high-mix, low-batch size production flow where the emphasis is on zero setup and elimination of WIP. The flexibility of the FASTBEND is unequalled in comparison to any other automated bender, allowing it to be utilized in a broad range of applications. Start your watch and witness how long it takes us to form 3 different parts from 3 different materials and thicknesses. *Be prepared to witness something that will stoke the flames of your processing imagination!*



SYNCRONO Fiber Laser

With its unique and revolutionary architecture and its 6g acceleration, SYNCRONO is the only machine on the market which can match the dynamics necessary to maximize fiber laser technology on thin sheets. The energy efficiency of the SYNCRONO (small masses execute faster movements) is further enhanced by the use of a fiber laser. This technology allows a dramatic reduction in the energy consumption, through the use of lower power and the high efficiency of the source without turbine, optical chain, or filters. Fiber laser technology allows a widening of the range of materials that can be cut with SYNCRONO, including high reflecting brass and copper.



PLATINO 2D Laser System

High-performance, user-friendly, flexible, and compact flat laser cutting machine. PLATINO cuts a broad range of materials and thicknesses with speed and precision without the need for manual adjustment. Note: Platino is available with both CO₂ and Fiber lasers.

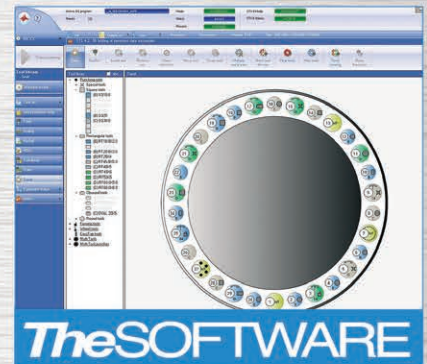


Machines at Open House

November 9 & 10
6-9 p.m.



Prima Power offers the widest range of sheet metal fabrication equipment from stand-alone machines to full Flexible Manufacturing Systems.



"Prior to purchasing the Platino Fiber lasers, Traulsen outsourced \$120,000 of laser cutting work to local job shops. Today, it is all done in-house. Our reaction time is a lot better now. We've eliminated setup times and all

the time we spent handling parts. The Platino Fiber lasers have helped us reach production levels that we could not have reached without them. We are always searching for new ideas to improve efficiency and customer satisfaction, and the Platino Fiber lasers are helping us do that."

(Left to right) Keith Spoon, Mike Lalic, Mike McAleer
Traulsen



"The 2D Platino fiber laser with LST automatic piece detachment, sorting and stacking system turned us into a versatile, lean, and advanced company in the field of automated

flexible production. More simply, it allows us to offer the market high-quality products with very competitive costs. The Platino fiber laser not only reduced our energy consumption but also cut production times in half."

Andrea Iacormelli (right)
M.A.I.srl



The Greening of Sheet Metal Fabrication...



Prima Power has pioneered servo-electric products into the sheet metal fabrication industry. We introduced the first servo-electric turret punch press in 1998. Since that time, our family of energy-saving products has grown to include the eP series servo-electric press brakes, LPe servo-electric punch/laser combination, and the EBe servo-electric Express Bending cell.



"One of the greatest benefits of the EBe is its ability to do negative flanges and positive flanges at the same time without flipping the part over. To form that part on a traditional brake, we would end up flipping it 8 times... and now we can form that part in just 45-50 seconds."

Jacob VandeHei
Unison Comfort Technologies®



"The new SGe's have helped us double our productivity. We can go from sheet to part without re-clamping. Another positive benefit is that we have gone from a 100 amp circuit to a 50 amp circuit for the machines, which translates into an incredible power savings."

Matt Wise
Imperial Commercial Cooking Equipment



"The E6x allowed us to produce all the louvers in-house, saving us nearly \$1-million. It also allowed us to decrease our prototyping time. We were sold on the servo-electric design and speed of the E6x. The E6x also gave us flexibility in how we choose to manage our inventory. The Prima Power equipment has brought Jamco into the 21st century."

Jason Redmon
Jamco Products, Inc.



"The FASTBEND literally works the operator through the bend sequences. You no longer need a highly-skilled operator to run the machine. You can take anybody with basic skills and within five minutes anyone can learn to operate the machine and make precision parts."

Bernard Pinheiro and David Li
Five Seasons Comfort Limited



"To date, our cost savings with the EBe has totaled over \$750,000, consisting mostly of labor savings and setup time reduction. Without the Prima Power equipment, we would not be able to achieve the level of precision and still remain cost competitive in the market today."

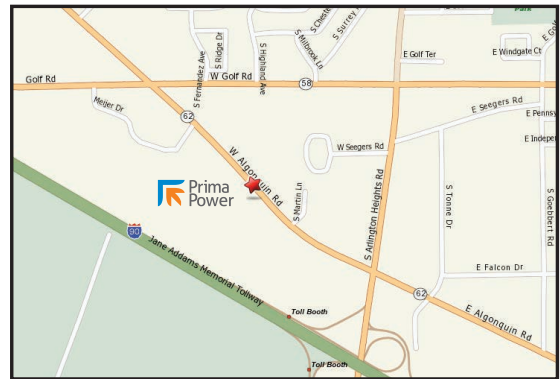
Jack Somerville
Emerson Network Power

DIRECTIONS

From McCormick Place to Prima Power:

- Merge onto I-55 S / Stevenson Expy S toward St Louis 1.3 miles
- Merge onto I-90 W / I-94 W via EXIT 292 toward Wisconsin 10.6 miles
- Keep left to take I-90 W via EXIT 438 toward O'Hare / Rockford (Portions toll) 13.7 miles
- Take the Arlington Hts Rd exit. Turn RIGHT Merge onto Arlington Heights Rd 0.3 miles
- Turn LEFT onto W.Algonquin Rd / IL-62 0.1 miles
- **Note:** Turn LEFT on side street at **European Crystal Banquet Hall** 0.3 miles
- End at **555 W. Algonquin Rd.** (on right) Arlington Heights, IL 60005 0.1 miles

Total Est. Distance: 27 miles



RSVP

Date _____ Time _____

Number of people attending _____

Name _____

Company _____

Address _____

City and State _____

Phone _____

Will you need transportation? Yes No

RSVP to:
E-mail: us.rsvp@primapower.com

