

GROVELANDS PARK MANAGEMENT PLAN 2007 - 2016



Version 1.7

Produced by London Borough of Enfield Council

Park Operations and Parks Business Units, (Environment - Public Realm and Sustainability)

Updated January 2013

CONTENTS

Section	Page
Part A – Background information	
1. Introduction	1
2. History and Setting	2 ~ 3
3. Understanding Grovelands Park	4 ~ 5
4. Park Management	6 ~ 11
5. Management Plan	12 ~ 13
6. Consultation	14
7. Strengths, Weaknesses, Opportunities & Threats	15 ~ 16
Part B – Management information	
8. A Welcoming Place	18
9. Healthy, Safe & Secure	19 ~ 23
10. Clean & Well maintained	24 ~ 26
11. Sustainability	27 ~ 30
12. Conservation and Heritage	31 ~ 36
13. Community Involvement	37 ~ 43
14. Marketing	44 ~ 51
15. Management	52 ~ 59
16. Action Plan	60
Short Term Actions	61 ~ 70
Medium Term Actions	71 ~ 75
Long Term Actions	76~ 82
	81 ~ 87
Appendices	
(appended to electronic copy)	
1. Feedback Report 2012 with comments	
2. Policy and Strategic Context	
3. Arboricultural Management Plan 2012 – 2016	
4. Higher Level Stewardship	
(appended to hard copy only)	
5. Green Flag Feedback report 2008	
6. Green Flag Feedback report 2007	
7. Maintenance Plans -Detailed Schedule [Separate Excel]	
8. Playground Visual Check Sheet	
9. Toilet Cleaning	
10. Energy Survey	
11. Horticultural Planting Plan	
12. Pesticide Minimisation Policy	
13. Notable Species	
14. GLA Habitat Survey	
15. Arborist Report / Tree Survey	
16. Friends Agreement / Sample of Minutes of Meetings	
17. Consultation of Park Users	
18. Marketing Strategy	
19. Biodiversity Programme	

PART A – BACKGROUND INFORMATION

1. Introduction

Preface

The purpose of establishing the Management Plan is to provide a guide to the principles of conservation, repair, enhancement, adaptation, and the use of Grovelands Park, that safeguard the significance of the site and ensures a sustainable future for it.

The Management Plan is designed to:

- Retain and protect the historic fabric and character of Grovelands Park and its public amenity value
- Conserve and enhance its value for wildlife and its role within the wider green network
- Provide a sound basis for the ongoing repair and maintenance of the landscape
- Establish guidelines for the use of the landscape
- Ensure continuation of the harmony between the needs of conservation and use of the park by the public

This Management Plan examines the various management issues that arise from the present use of the park and establishes a series of action plans that seek to ensure that the significance of the park can continue to be preserved and enhanced as a heritage, wildlife, and public asset.

The Management Plan is designed to adapt and evolve. The first five years of the Plan has focused on the infrastructure of the Park, ensuring that this has been brought up to a good standard, having secured capital and revenue funding in order to do so. The Management Plan over the next five years will focus on the softer elements with sustainability and biodiversity being the main drive. Severe cuts in public spending and prioritisation of key services to address the economic decline may prove challenging and will require innovative ways to supplement government funding. The Parks department will work in partnership with the Friends of Grovelands Park and other voluntary groups to identify projects and seek external funding for biodiversity projects whilst implement the developing Ecological and Biodiversity Action Plans

Grovelands Park

Grovelands Park is Graded as Metropolitan with a site no EnB1102 covering 48.8 hectares. It was purchased by the formerly named Southgate Urban District Council (now known as the London Borough of Enfield). 64 acres were purchased in 1911 for the sum of £22,893, opening in 1913 as Grovelands Park; further purchases increased the size of the park to 91 acres.

Location Map



2. History and Setting

Grovelands Park is an area of parkland with trees, playing fields, lake and woodland.

The area was originally heavily wooded with much of the Grovelands estate consisting in the 16th century of oak standards with hornbeam coppice,. The main products were firewood, charcoal and oak bark, used for tanning.

Mr Walker Gray purchased 230 acres of land in 1796 and in 1798 built the existing house to the design of architect, John Nash who had the grounds landscaped by Humphrey Repton.

After the death of Walker Gray in 1834, the house and grounds were acquired by a relative, John Donnithor Taylor of Taylor Walker Brewery in 1838. At this time there was a herd of 50 – 60 small 'red deer' on the estate. To prevent the deer getting near the house a ha-ha (ditch) was constructed that is still visible on the park boundary nearest the house.

John D Taylor died at Grovelands in 1885, by which time he had increased the estate to 600 acres. Much of the estate was sold in lots after the death of his son in 1902. Public transport innovations were largely responsible for the demise of rural Southgate, namely, the Great Northern Railway branch line, the establishment of a bus terminus at Southgate Green and, later, the Piccadilly line extension from Wood Green to Cockfosters.

After considerable local opposition, Southgate Urban District Council bought 64 acres in 1911 for the sum of £22,893, opening in 1913 as Grovelands Park, further purchases increased the size of the park to 91 acres. Grovelands Park was opened on Saturday 12th April 1913 by the Right Honourable the Lord Mayor, Sir David Burnett, KT.

An early feature of the new public park was the growing avenue of scarlet oak trees, leading west from the foot of the lake towards Grovelands House. Each year a tree and commemorative plaque would be introduced to record the Mayor of Southgate. These are now considered to interfere with the simplicity of the Repton Landscape, as does the Cherry Avenue at the Bourne entrance.

The house became a temporary hospital for wounded soldiers in 1916. In 1921 it became a convalescent hospital attached to the Royal Northern. It closed in 1977 and re-opened in 1986 after extensive renovation as a private psychiatric hospital.



Priory hospital within Grovelands grounds

The Lake is naturally fed by two springs from the bottom, enlarged from 4 to 7 acres to a design by Humphrey Repton. One of the two islands is graced by a weeping Willow. Many species of waterfowl nest here and the lake is well stocked with fish. The lake is a reservoir under the reservoir act

The trees surrounding the lake and the wooded area are remnants of the old estate with the large oaks within the parkland being classified as veteran trees. These date back to at least the Repton period, and of significant cultural and ecological value.



Views across the lake

Coppicing of the woodland ceased in the late 18th Century and became known as Winchmore Hill Wood. Many of the oaks are even aged and show signs of decline in their condition. Many of the trees within the woodland are of a similar age and size and will need to be thinned to create a more diverse woodland structure allowing some of the trees to grow on to maturity

Woodland views



3. Understanding Grovelands Park

Grovelands Park forms part of what was a large country estate. The house and gardens now make up the Grovelands Priory Hospital. For historic landscape purposes, the two are often considered as one and the same site.

Topography

The whole of Grovelands Park lies at least 35m above sea level, the highest point being on the south-western border at about 60m. There is one major wet valley within the park. The stream has been widened and dammed in the centre of the park to create an artificial lake.

Geology

Lays mostly on a London clay base rock, a tertiary marine deposit laid down by the Pliocene sea with many areas covered in glacial drift deposits.

Hydrology

Generally, the site is poorly drained and waterlogged during the winter months. There is one lake within the park, over spilling into a watercourse that drains eastwards into the Houndsden Gutter that feeds into the Salmons Brook.

The lake is fed by surrounding streams and surface water, including road surface run-off, making it susceptible to pollution.

Landscape

The site has a rich number of natural habitats, given the area of the park.

Ecology

Habitats within the park include parkland with trees (remnants of wood pasture), veteran trees, broadleaved woodland, standing and running water and semi-improved grassland. A number of animal species have been recorded in the park including 31 bird species, 21 butterfly species and six species of bat. Managing these important habitats for wildlife, whilst ensuring that the park retains its amenity and recreational value, is an important component of this management plan

Amenity grassland / sports pitches

Some of the grassland is managed as a Pitch and Putt course and as formal lawns.

The Pitch and Putt Course is leased to an external agent who manages the letting and use of the course. The course is maintained through the Parks Operation section.

The bowling green is leased to Grovelands Bowling Club, who are responsible for its bowling green maintenance. The bowling green surrounds are maintained by the Parks Operations section.

There are two football pitches hired to a local football club through the Park Business Support Unit and maintained by the Parks Operation section. The pitch is on a sloped area where it is planned to encourage youth football.

Lake / Reservoir

The reservoir was constructed by 1797 with landscaping by Humphrey Repton. The solid geology of the area comprises the London Clay – of which the embankment is constructed and on which the embankment is built.

The reservoir is retained by an earth fill embankment – curved in plan, approximately 4 metres high and 170 metres long. It has a stated capacity of 65,442 cubic metres and a surface area of 30,150 square metres when full to its top water level of 51.000m AOD.

The overflow weir consists of a 1.2 metre wide broad crested weir through the centre of the embankment bridged over the crest by timber planks. The weir then discharges to a 1.2 metre wide, stepped concrete channel with brickwork side walls. The clear vertical opening at the weir crest is 450mm. At the toe of the spillway the chute discharges into the stream bed onto Armorlock block protection beyond which the stream meanders away from the embankment. About 300 metres downstream the stream enters a culvert protected by a bar screen.

Originally the reservoir had two piped overflows – one on each end of the dam. The valley runs in a north-easterly direction. About 300 metres downstream the river course enters a culvert near the corner of a housing development which is probably less than 4 metres above the stream bed. A further 200 metres downstream two houses are built across the lower section of the valley above the culvert. Immediately downstream is a road through a built up area on the far side of which the stream re-emerges into an open culvert. The stream continues through a dense residential area for a further 1.2km before entering Salmon's Brook, a tributary of the River Lee.

Grovelands lake



4. Park Management

The management of the park has to be considered under the 3 separate headings of

- Landscape and Heritage
- Ecology
- Public use

Landscape and Heritage

A considerable amount of research work has been carried out into the historical background of the site and it has been established that there are elements that deserve particular attention for their future preservation.

There are also some important views within the park, particularly those looking to and from the house, which are important considerations.

There are three principal elements in the landscape of Grovelands Park for which action plans will need to be considered; the woodlands, parkland and lake.

Enfield Council commissioned Atkins in May 2008 to develop a detailed plan to make recommendations and outline costs for the improvements to restore the park. The aim of the feasibility study was to prepare a proposal for the restoration of Grovelands Park considering the compatibility of the historic restoration and the current activities and uses within the park. An evaluation has been made as to the existing condition of the park, looking at the historic features, the context of the original Repton design an appraisal of vegetation and a review of the amenity interests. The Council will consider the findings and subject to priorities and external funding opportunities implement improvements to the park via the management plan.

Ecology

Grovelands Park supports a number of important habitats and species, broadleaved woodland, parkland with trees (remnants of wood pasture), veteran trees, standing water, a stream and species rich semi-improved grassland. A description of the habitats and other ecological features within the park with current and proposed conservation actions are detailed in section 14

The woods, for the most part, conform to George Peterken's description of ancient, semi-natural stand type 9A Pedunculate Oak -Hornbeam woodland. For the purpose of this plan, the woodlands will be considered as one compartment. The general pattern of vegetation is of large, even aged and old oaks dominating with outgrown hornbeam coppice forming a second layer.

The shrub and ground layers vary from very open to bare ground below the dam, to a mosaic of holly, rhododendron, brambles and naturally regenerating oak, ash, holly and hawthorn. Oak is regenerating vigorously in the north west of the park, extending woodland cover into former grassland areas.

The broad policy of woodland management will be to maintain and improve the quality and appearance of the woodlands by ensuring continuity, encouraging a varied age structure and a mixed population of trees where desirable, whilst encouraging natural regeneration of native species.

A review of the woodlands has been carried out and an Arboriculture Management Plan covering the first five years of the plan has been produced to address the problems of ageing stands of (in particular) common oak. The traditional practice of hornbeam coppicing will be continued and developed, where appropriate. In addition a further Arboricultural Management Plan for Grovelands Park is being produced to focus on the next five years. The plans considers the tree resource within the park as a whole and includes both Parkland and Woodland trees. The Authority view is that the borough should be viewed holistically and therefore it plans collectively across the borough once the financial feasibility of doing so has been established.



Stream and stepping stones

Mature trees are important components of the historic parkland, but when they are old and die they become even more important as habitats for insects and need to be retained as long as possible and other trees allowed to pass into similar condition. Woodland areas are regularly monitored for dangerous trees with remedial action taken immediately. During the latter part of 2011/ early 2012 the parks Arboricultural team together with external contractors have carried out a substantial amount of priority tree work. This includes 'monolithing' (removal of branch system) of a number of dead/dying veteran trees in the parkland and adjacent to properties where breakage has occurred.

The landscape of large trees and traditionally managed grassland is seen as vital to the ecological role as an important wildlife habitat, possibly of national importance, for insects. The unimproved acid grassland under and between the larger trees is an important Biodiversity Action Plan Habitat and the council has secured funding to enhance this grassland through Natural England's Higher Level Stewardship scheme.

Work on the Lake and waterway has been programmed over the period of the plan. This will involve management of lakeside vegetation to allow light into the lake and establish views across the lake. In addition, work will involve developing wildlife cover and planting marginal vegetation to improve cover in the lake and increase oxygen in the water. Some tasks provide an ideal opportunity for practical conservation volunteer workdays.

Grovelands Park Lake constitutes a 'large raised reservoir' and the lake is designated as a statutory reservoir under The Reservoirs Act 1975 by virtue of its capacity to store water above the natural ground level. The asset is owned by the Parks department who, in order to comply with the Act, commission Highway Services to undertake the requirements of the Act in terms of inspections and arranging works etc. The Act requires that the Reservoir is inspected at ten yearly intervals by an 'Inspecting Engineer'. This inspection was last undertaken in February 2008 with the recommendation that it is repeated in 2018. The following recommendation was made under section 10(6) of the Act "Works are undertaken to safely accommodate the still water flood level and waves associated with at least the design flood for this reservoir".

Between these Inspecting Engineer visits, the Act requires that the Reservoir is 'supervised' by a 'Supervising Engineer'. This is undertaken at six monthly intervals to report on the Reservoir's condition and to decide whether there are any changes which require the attention of an Inspecting Engineer. The works requested in the 2008 Inspection have been costed and funding avenues have been secured. Annual Statements' are submitted to the Environment Agency in their role as Enforcement Authority.

As the lake is categorised as a Class C reservoir, the design flood is defined by Floods and Reservoir Safety (3rd Edition) as the 1 in 1000 year return period event. These works are “To safely accommodate this magnitude of flood event without water flowing over the embankment in a manner that could lead to catastrophic erosion and failure of the dams the spill capacity of each reservoir is to be increased”. Discussions have taken place to ensure that the works are not over-designed and to minimise the scale and impact of these works, in particular to demonstrate the impact the works will have on areas downstream of the reservoirs. Construction works of an auxiliary spillway and raising of the existing wall along the embankment crest from 0.2 to 0.45m were completed in March 2012. Final cost was £140,000 including design/site supervision fees.

The external Arboricultural contractors Gristwood & Toms have carried out works around the lake targetting the removal of deadwood and high weight bearing branches overhanging footways using a MEWP (mobile elevated work platform) to enable safe access into the trees. Prior to the commencement of the reservoir works removal of a small number of trees by the lake (north eastern edge) have been undertaken.

Public Use Access



Pedestrians can gain access via nine separate entrances, making the park easily entered from the direction of Southgate, Winchmore Hill and by residents living in the roads surrounding the park.

Grovelands Park is well served by public transport services. The London Underground Piccadilly Line from Kings Cross and Central London stops at Southgate Station that is a ten minute walk from the park via Bourne Hill or Queen Elizabeth Drive.



The First Capital Connect train service from Enfield and Moorgate respectively, provides a regular service stopping at Winchmore Hill Station.

There is good access by bus from Southgate Circus (buses 298, 121, 299, 611 and W6)

Recreation

Organised football takes place mid-week in the Park on prior booking and payment of a fee to the Parks Business Unit. This is on the same basis as other football in the Council's parks.

The pitch and putt course is available for use on payment of a fee during an eight month open season from March to November. An external agent manages the letting and use of the course.

There are four tennis courts and one basketball court available for play at no charge.

Passive Recreation

The majority of visitors to Grovelands Park do not use formal facilities nor take part in organised activities, but quietly enjoy their visit by walking, exercising their dog, jogging, birdwatching or feeding ducks, squirrels and other wildlife or playing, picnicking, meeting friends and relaxing. In meeting these needs the size of the park, as well as its landscape, is important.



The ability of visitors to use the full extent of the park's facilities depends on good directional signage that clearly guides people to areas of specific interest. Additional interpretive signs

providing information on the history, landscape and conservation have been installed that will enhance the local knowledge and appreciation of the park.

Provision of additional seating has enhanced the ability of the less able to enjoy the park as well as providing relaxing viewpoint opportunities. Many people have visited the Grovelands Park over a number of years and have chosen to have a memorial bench sited around the lake in memory of those loved ones that the park was a very special and treasured haven. The current styles in use throughout the park will continue to be sympathetic to visitors' needs and landscape concerns.

Refreshments

There is a leased cafeteria in Grovelands Park that is situated near the Children's Playground. The concessionaires main obligations are:

- to use as cafeteria
- to keep open as a minimum, school holidays and every weekend 11.30am - 3.00 pm
- to keep the premises in good and substantial repair and condition excluding structural elements.

This cafeteria is open throughout the year providing a varied menu of hot & cold food/drinks together with a range of toys for young children.



Grovelands café

Public Toilets

The main public toilets, including facilities for the disabled visitors in the Park, are located at the exterior of the park cafeteria.

Toilet facilities are kept in a clean, safe, and good working condition by contract staff with checks completed when the park opens and repeated at 2 p.m.

Capital provision for Grovelands Park was approved as part of a £3.5Million program of investment. The existing toilets have been completely refurbished with new cubicles and sanitary fixtures including hand dryers. Baby changing facilities have also been introduced in both male and female toilets. An extension to the rear of the café houses a brand new ambulant toilet facility with a cubicle installed in accordance with the Disability Discrimination

Act. As part of the works, a new access ramp to the café, together with raising the front elevation of the café, formed part of the extensive works completed during 2007.

5. The Management Plan

The management plan sets out the service levels and is the operational basis with which they will be carried forward by the Council for the foreseeable future.

The purpose of the Management Plan is to:

- Identify, discuss and resolve issues relating to site infrastructure, site users and available resources.
- Develop and cost the way in which Grovelands Park is managed and maintained, to ensure an enjoyable experience for present and future users;
- Identify and address who is responsible for certain aspects of management;
- Provide a benchmark against which delivery and performance of the identified service levels can be measured.

It is a 'working document' that brings together all the information relating to Grovelands Park, for use by all those involved in its management. It will be updated, revised, periodically reviewed. The Action Plan is divided into short term for years 1 and 2, Medium term for years 3 – 5 and Long term for years 6 – 10. Further actions will be added to the long term action plan as the Plan evolves.

Policy and Context

Parks are managed areas of the green environment which provide opportunities for a range of formal and informal leisure, recreation and play.

The significance of parks, open space and countryside provision is clear:

- In 1988 the Audit Commission estimated that local authorities in England and Wales maintained approximately 120,000 hectares of parks and open spaces - an area approximately the size of Berkshire.
- In 2000, the Heritage Lottery Fund estimated that there were approximately 30,000 urban green spaces in the UK, of which 5,000 are urban parks.
- In 1992 the Audit Commission suggested that there were 34,533 parks and open spaces in the UK.
- Local Government Finance Statistics indicate that over a 12 month period in the 1990's, £538 million was spent on parks and green spaces.
- Recent national MORI research indicates that 60% of people believe that the provision of open spaces is key to an ideal community.
- The Public Service Agreement on Sustainable Communities (PSA8) identifies the importance of "cleaner, greener, public spaces."
- It is widely recognised that the provision of high quality 'public realm' facilities, such as parks, can assist in making an area an attractive place to live and work, and can result in a number of benefits in terms of economic development and regeneration.

The benefits of safe and accessible parks and open spaces can be summarised as follows:

Social

- providing safe outdoor areas that are available to all members of the local population.
- providing opportunities for community events, voluntary activities and charitable fund raising.
- providing easily accessible recreation as an alternative to other more chargeable leisure pursuits.
- providing opportunities to improve health and take part in a range of outdoor sports and activities.
- providing an educational resource or outdoor classroom.

Economic

- providing a positive environment for businesses to locate and develop.
- adding value to surrounding property, both commercial and residential, thus increasing local tax revenues for public services.
- contributing to attracting visitors, including using the park as a venue for events.
- encouraging tourism into the area.
- helping to create an attractive local image.
- helping to reduce social exclusion and its associated costs to society.

Environmental

- providing wildlife habitat and a vital component within the wider green network.
- helping to stabilise urban temperatures and humidity.
- absorbing pollutants in the air and ground water.
- providing opportunities for the recycling of organic materials.
- providing opportunities to reduce transport use through the provision of local facilities.
- providing walking and cycling routes through urban areas

6. Consultation

An Ipsos MORI survey was conducted in 2012 based on interviews with 1,150 residents aged 18+ across The London Borough of Enfield. An overview relating to Parks and Open Spaces is shown below.

2012 Residents Survey

How satisfied or dissatisfied are you with the following services provided or supported by Enfield Council – parks and open spaces? (Q7j)

OVERVIEW

Base: those who use or benefit from the service (1,205 respondents)

	2012 Residents' Survey	2009 Residents' Survey	2008 Place Survey
Satisfied with parks and open spaces	91%	82%	75%
Neither satisfied nor dissatisfied with parks and open spaces	3%	9%	15%
Dissatisfied with parks and open spaces	6%	9%	10%

Please note:

Satisfied- 'very satisfied' or 'fairly satisfied'

Dissatisfied - 'very dissatisfied' or 'fairly dissatisfied'

The level of satisfaction for all residents, that is users and non-users, was 81% in 2012.

Since 2002

- This question has been asked in 4 postal surveys since 2002 – BVPI surveys in 2003 and 2006, as well as the 2008 Place Survey and 2009 Residents' Survey
- However, a comparison cannot be made with the 2006 and 2003 BVPI surveys as the base is 'all respondents' rather than 'those who use or benefit the service'

Age Groups

- Those who are 65+ are more satisfied than those in other age groups. The figures indicate that 93% (11% points higher than the average) of residents aged over 65, are satisfied with parks and open spaces
- Residents aged 35-44 and 45-54 have the lowest levels of satisfaction (79% and 77% respectively)

Households with children under 18

- 84% of households without children under 18, are satisfied with parks and open spaces, while 79% of those with children under the age of 18 are satisfied with parks and open spaces
- 12% (3% points above the average) of those with children under 18 and 6% of those without children under 18 years of age are dissatisfied

Latest Residents Survey 2012

The latest residents' survey was completed in November 2012. Although the findings are not available by individual park they can be summarised by postcode area but cannot be linked to individual parks as the respondent does not state which park they visit. Many respondents may visit parks in postcode areas that they do not live in.

7. Strengths, Weaknesses, Opportunities and Threats (SWOT) analysis

Following consultation, Friends and staff produced a SWOT analysis for Grovelands Park as shown in figure 1. It takes the form of a situational analysis of internal strengths and weaknesses and of more external (governmental, community, legislative, etc.) opportunities and threats.

SWOT Analysis for Grovelands Park

Strengths	Weaknesses
<ul style="list-style-type: none"> • First Green Flag Award 2007 • London in Bloom Award 2009, 2010 and 2011 • Refurbished toilets including new DDA compliant facility • Raised café landing for DDA • Refurbished Inverforth Gates • Refurbished Playground • New pathfinder natural play area • Friends group involvement • New staff structure • Knowledgeable staff • Multi-cultural usage • Good maintenance programme • Well used • Good range of facilities • Heritage and history • Good play facilities • High public perception • Recent capital investment • Staff coverage • Raised public awareness 	<ul style="list-style-type: none"> • Redundant changing rooms • Algal blooms on lake in summer
Opportunities	Threats
<ul style="list-style-type: none"> • External funding • Sustainable management • Increased events programme 	<ul style="list-style-type: none"> • Further budget cuts • Competition • Change in Government policy • Economic decline

Key **Strengths** include the fact that the management reorganisation has provided a stronger and more proactive staffing presence in the form of the the Safer Neighbourhood Parks Unit (Parks Police). Management has been heavily assisted by the work of the Friends group, who have assisted both in terms of physical improvements and in liaising with the local community. The facilities the park has to offer are perceived to be varied and interesting, including the improved playground area and new Pathfinders natural play scheme. The park's heritage and history is a plus point, and a feasibility study has been completed to more fully explore the possibilities. The investment programme for the toilets, access ramp for toilets and Café, grounds maintenance (including machinery, equipment and new uniforms for staff) and planting are making a real difference to the quality of the Park, and maintenance standards were seen to have markedly improved over the last 24 months. The park was entered into the Best Public Park Award in London in Bloom and was awarded Gold in 2009, 2010 and 2011. Usage by visitors continues to be high, with good representation across a cross-section of the local community, including ethnic minorities, the young and older people.

Weaknesses previously included antisocial behaviour including criminal damage and graffiti by a minority of users. Results from the SNPU 2011 statistics advise that there has been one fixed penalty ticket issued and three arrests, which mainly relate to one incident having occurred outside of the park. Although 37 verbal warnings have been issued these are mostly as a result of youth activity, [during the summer the park can attract under age drinkers] but other problems include poaching from the lake. The Parks Police patrol seven days a week and often carry out a late night patrol to keep an eye on the poaching allegations. The infrastructure (buildings, footpaths, etc.) was seen to be failing, and this has been addressed in a number of areas. There are still relatively few biodiversity habitats within Grovelands Park. The limited events programme was previously identified as a weakness, however there has been a marked increase in the number and type of events held, with healthy organised walks, weekly timed runs, buggy fit and Pushy Mothers classes proving popular.

In terms of **Opportunities**, staff saw the chance to build on the excellent structure, buildings and landscape within the park. This Management Plan and the Council's own aims and objectives were seen as an opportunity to build on. A feasibility study was undertaken during 2008 with a view to restoring the Repton landscape with an opportunity to explore other sources of income, particularly those from external sources e.g. Heritage Lottery Fund. Woodland management is being explored more fully in conjunction with the Forestry Commission. The relationship with the Friends was an area which could be built upon to draw down other resources, and to involve the local community more fully in the enhancement of the Park. Finally, the chance to improve standards was seen to provide the opportunity to make the Park more fit for purpose in relation to the current and future demands of users.

There were a number of potential **Threats** to Grovelands Park. A change in government policy away from the current view of parks as central to sustainable communities could affect public perception. Any change in terms of the way other public services were viewed in terms of funding could draw resources away from the Park and towards other Council-run activities. In particular, the cut in public spending and prioritisation of key services to address the economic decline may prove challenging and require innovative ways to supplement government funding.

Grovelands Park's future

A thorough examination of the SWOT analysis, consultation with the local residents and users of the site has guided the future of Grovelands Park and how the park is to respond to local needs.

The following plan uses the Green Flag criteria as a template for the summary of the actions to be taken throughout the park

Enfield's Biodiversity Action Plan

All local authorities have a duty under the Natural Environment and Rural Communities Act 2006 to have due regard to the conservation of biodiversity in exercising all their functions. The duty aims to make biodiversity conservation an integral part of policy and decision making. Clear aims for the maintenance, connection and extension of key habitats and species have been established through the London, UK Biodiversity Action Plan. The national biodiversity strategy also sets a range of objectives through Planning Policy Statement 9.

The Enfield Biodiversity Action Plan, adopted in November 2011 describes the borough's biodiversity resource and sets targets and actions to ensure that it is retained and enhanced. The BAP has set a strategic vision for biodiversity in Enfield and will consist of a series of action plans for selected habitats and species. Effective management of our parks for biodiversity will be a core component of this action plan, with particular emphasis in years six to ten.

A review of Sites of Importance for Nature Conservation [SINCs] across the borough has been undertaken by Enfield's Local Site Selection Panel. Grovelands Park has met the criteria for selection as a SINC and included in the hierarchy of Local Wildlife Sites for the emerging Development Management document, as referred to in the section LDF. Citations for SINCs

are held by the Council and by Greenspace Information for Greater London (London's Environmental Records Centre).

Through the planning process the Council will ensure that SINCs and sites that meet the criteria to be designated as SINCs are protected relative to their status and, wherever possible enhanced. These sites have been verified and agreed by an independent expert panel and the methodology for selection of sites has been approved by the London Wildlife Sites Board.

The list of Nature conservation sites is subject to consultation and may change.

The definition for Sites of Importance for Nature Conservation Grading is as follows:

Metropolitan

Sites of Metropolitan Importance: these are the best examples of wildlife sites in London and are selected by the Mayor of London and his officers at the Greater London Authority.

Borough

Sites which are important on a borough perspective in the same way as the Metropolitan sites are important to the whole of London. Although sites of similar quality may be found elsewhere in London, damage to these sites would mean a significant loss to the borough. As with Metropolitan sites, while protection is important, management of borough sites should usually allow and encourage their enjoyment by people and their use for education.

Local

A Site of Local Importance is one which is, or may be, of particular value to people nearby (such as residents or schools). These sites may already be used for nature study or be run by management committees mainly composed of local people. Where a Site of Metropolitan or Borough Importance may be so enjoyed it acts as a Local site, but further sites are given this designation in recognition of their role. This local importance means that these sites also deserve protection in planning.

PART B – MANAGEMENT INFORMATION

This section provides the information to required to manage the site in order to optimise its value to local people.

8. A Welcoming Place

The site is to be kept in a welcoming condition through good provision of signage, prominent welcoming entrances and good access throughout.

There are a number of improvements designed to assist in making Grovelands Park a more welcoming place during the life of the plan. These are included in the Action Plan that is outlined in the final section of this plan to ensure that implementation is achieved in a realistic fashion and accords to an achievable timescale.

The Inverforth Gates at the main entrance were completely renovated during 2007 – this included repainting of the gates to ensure that as visitors enter the Park, the entrance looks cared-for and well-managed.

The flower beds on both sides of the main entrance at Broad Walk were re-instated during 2007/08 with sustainable planting:

- To make the main entrance welcoming and interesting
- To provide colour in the form of swathes of perennial herbaceous species throughout spring, summer and autumn
- To provide interest in the form of attractive shapes and seed heads throughout winter
- To educate users in relation to an interesting and unusual form of horticultural provision
- To educate schools and members of the general public in relation to the use of colourful planting which is sustainable and requires no irrigation once established, and which needs low levels of maintenance.

During 2008, new signage for the main entrance which informs the public about the facilities and the location of those facilities within the Park was installed.

This includes the following elements:

- Coloured plan of the Park including footpaths and entrances
- Facilities in the form of symbols which can be easily recognised by all ethnic groups which use the Park, irrespective of language
- Resumé of the history of Grovelands Park, including its acquisition and the characters and activities associated with it
- Contact details for enquiries
- Symbols indicating any restrictions or unacceptable modes of behaviour.

Secondary entrances have also had appropriate signage installed in a more simplified form than that envisaged for the main entrance, but nevertheless interesting, informative, and welcoming to visitors.

The eight other entrances where feasible, will have provision for areas of colourful and attractive planting, either in the form of herbaceous perennials and grasses, bulb planting or suitable shrubbery.

This conveys a message that the Park is well-maintained, and that visitors are welcomed.

9. Healthy, Safe and Secure

The aim is to ensure the park is managed safely so that neither the visitors nor parks staff and contractors are exposed to hazards on site. This applies both in respect to physical & environmental hazards and those posed by antisocial behaviour.

There are a number of improvements that have taken place which will make Grovelands Park a healthier, safer, and more secure place to use. These include:

Health and safety

The Parks Service is committed to ensuring the Health and Safety of its parks staff and users of the facilities. The Health and Safety Plans for the Council, Group and Service extending to individual parks and buildings demonstrate the following objectives:-

- To eliminate or reduce to minimum, accidents, incidents and work related ill health.
- To achieve and maintain a safe and healthy working environment for all and to ensure that others who are not our staff are not harmed by our work activities.
- To strive to bring about improvements to our provisions for Health and Safety, enabling them to evolve and develop, thus meeting the needs of future activities and changes in legislation.

Appropriate monitoring systems are in place to comply with the requirement of the Corporate Policy for Health and Safety.

There is a Health and Safety Policy issued to all Managers within the Group and it is for them to ensure that all parks staff know where a copy is located and have easy access to it. Managers will monitor and enforce the standards embodied within the policy and emphasise to staff that they also bear an individual responsibility to ensure that procedures are appropriately implemented.

In 2008 a Health & Safety Manager for the whole of Parks was appointed to ensure a co-ordinated approach and to ensure that standards are maintained.

Visitors

The Council has a duty of care to all visitors and users of the park. The managers and staff pay particular attention to this aspect of Health and Safety regulations. Notices are displayed at appropriate places indicating where help and information is available. Where staff become aware of the existence of a particular item or situation which may be hazardous to users and which cannot be dealt with immediately, those who are likely to be in the vicinity of the risk are advised and informed of any necessary precautions. Additionally, suitable warning notices and, where appropriate, physical barriers and/or alternative routes and means of access and egress will be advised.

Parks staff

All staff are aware of their responsibilities under the Health and Safety at Work Act 1974 Sections to:

- Take reasonable care for the Health and Safety of themselves and of others who may be affected by their acts or omissions at work.
- Co-operate with the Council insofar as is necessary to enable that duty or requirement to be performed or complied with to assist clear understanding of staff duties while at work.

Incidents involving near misses, accident, injury or damage are recorded on site and copies of the records are forwarded to managers and the Councils central Safety Unit. When such incidents occur, the Park Manager will assess the situation and work with the Parks overall Health and Safety Manager to ascertain whether any modifications to existing practice are required, and ensure that any action required is expedited.

Premises Coordinators

In the summer of 2008 the Team Leader was appointed as Premises Coordinator for Grovelands Park. This role is to look after all aspects of Health and Safety on the site and retain records in the Premises log book. The records are inspected on a regular basis by the Council's Corporate Health and Safety Team.

All aspects of site Health and Safety are covered including Fire equipment and procedures, maintenance and condition of buildings, maintenance of boilers and being responsible for keeping up to date incident logs.

Planned improvements on Health and Safety matters were completed in late 2009 which included a total overhaul of the Grovelands mess room to provide the staff with conditions, equipment and furniture that complies with Health and Safety requirements. Specifics included fire retardant furniture and PAT tested electrical equipment. The mess room also benefited from internal and external repairs

In 2011 the Premises Controllers became Premises Coordinators with Property Services taking a much more active role in looking after the repair, upkeep and maintenance of the onsite buildings. As a Premises Coordinator, the Park Manager has more time to focus on staff and contractor safety with the buildings routine care being taken care of by Property Services

The Premises Coordinator works very closely with the Manager for Health and Safety in Parks to make sure that Health and Safety is an absolute priority within Grovelands Park.

Contractors

A proportion of the services provided in Grovelands Park are carried out through, or supported by, Contractors. The Council fully accepts its obligations under the law, both as an operator of an undertaking, an employer and as an occupier of premises, to try to eliminate hazards and, failing that, to take all reasonable steps to minimise the risks that may arise from its own and its Contractors' work activities that may affect our staff, those who enter the park, (for whatever purpose) our residents and members of the public. It is firm policy to take all reasonable steps to minimise risks, that may arise from its own undertakings, that may affect its Contractors, their staff and others.

The Council makes it clear to all Contractors who carry out services in the borough, that they are expected to comply fully with the spirit and intent of the Health and Safety at Work Act 1974.

Method Statement and Risk Assessment

All Contractors who carry out work in our parks and open spaces are required to supply a method statement and risk assessment, with reference to the works that they will be carrying out on our property, and in what manner the work will be done. No work is allowed to start until we are satisfied fully with the statement provided to us from the Contractor.

A general park risk assessment has been carried out for Grovelands Park and all machinery and equipment used on site has been fully risk assessed and had safe systems of work written up.

5 Star Health & Safety Audit

In December 2009 the Parks department was inspected by an independent auditor as Enfield Council went through a complete 5 star audit process. The auditor was very impressed with the Parks department and Parks were seen as a major reason why Enfield Council achieved 4 stars. (The Corporate Health & Safety department were expecting 2 or 3 stars, so 4 stars was a major achievement.)

The auditors returned in 2011 and Enfield Council achieved an unprecedented 5 star award and in the process became the first Local Authority to achieve such status. The Parks Service

again played a major role in the audit process with the inspector revisiting sites he had previously visited and noting additional improvements.

On the back of this success came the award of the Sword of Honour by the British Safety Council for excellence in Health & Safety. Again particular merit was awarded to the Parks Service for the case study submitted for their work on introducing a Health Surveillance programme with particular focus on hand arm vibration.

Smoking Ban

Enfield has had a policy now for some time where smoking in mess room areas and park vehicles has been forbidden.

Asbestos survey

An updated Asbestos survey was conducted for Grovelands Park in 2011 and the findings of the survey have been made available to the Area Park Manager. This information being updated and available has further improved the safety of parks staff and visiting contractors.

Annual Survey

An annual survey of all infrastructure, including footpaths, buildings, car parks, railings, fences, etc. has been conducted by parks staff to identify condition and to ensure that:

- Immediate health and safety risks are identified
- Longer-term potential health and safety risks are identified
- Features are fit for purpose (is the path in the right position? constructed of suitable materials? etc)
- Visual and amenity considerations are accounted for (is the design appropriate? should a more attractive wearing course be applied to surfaces? etc.)

Organised football takes place on Sunday mornings in the Park through the Carpenter Youth Football Club. Pitches are booked through a central booking system with payment of a hire fee to the Parks Business Unit.

Personal security and safety

Safer Neighbourhood Parks Unit (SNPU)

Enfield Council and the Borough Police set up the unit in response to growing public concern over anti-social behaviour in Enfield's parks and open spaces.

The SNPU commenced duty on 1st July 2005 and has been particularly successful since its introduction.

The staffing of this unit comprises of 1 Sergeant, 2 PC's and 15 Police Community Support Officers (PCSOs). They are dedicated to Enfield's parks and open spaces where they enforce the byelaws and provide a reassuring presence for park users.

The unit provides the following:

- High visibility patrols and proactive intelligence-led operations to combat anti-social behaviour.
- A reassuring presence for park users.
- Liaising with key stakeholders in relation to crime and antisocial behaviour.

Residents who witness anti social behaviour in the Borough's parks and open spaces are requested to call Enfield Council's 24 hour Customer Service Centre on 020 8379 1000. Incidents of a serious nature should still be reported direct to the police via 999.

All Park staff, managers, and concessions within Parks now have access to a Duty Phone number that will be answered by an on duty member of the SNPU. This has greatly improved the response time to incidents and has made parks and concessions staff feel safer.

The unit provides high visibility patrols seven days a week between the hours of 10.00a.m. and 10.00p.m, although the unit does operate outside these hours when there is an operational need or whilst conducting proactive intelligence-led operations to combat anti-social behaviour.

Incidents occurring in parks are logged by both the Council and the Police with data shared and analysed so that patrols can be posted in the areas of greatest need. The tasking of the SNPU is then carried out at the bi-weekly multi partnership Street Action For Enfield (SAFE) meeting.

Grovelands Park is located within a low crime area of the Borough and therefore is not among the top ten parks in terms of crime, although the park does suffer from a number of acts of anti-social behaviour. Most of the problems are as a result of youth activity, but other problems include poaching from the lake and irresponsible dog owners. The Parks Police patrol seven days a week and often carry out a late night patrol to keep an eye on the poaching allegations as required.

The lake in Grovelands Park is open all year round for free public fishing. However, all users of the lake with the exception of the under 12's are expected to have a valid Environment Agency (EA) Rod Licence. Rod licences can be purchased directly from the EA or from a Post Office. The lake is regularly patrolled by the EA bailiffs and the Parks Police to combat illegal fishing and poaching.

The SNPU have been authorised to use Enfield Council's fixed penalty notices for such offences as littering and dog fouling.

Safer Neighbourhood Police Unit stats for Grovelands for 2011

Fixed penalty notices issued:

Jan	Feb	Mar	Apr	May	Jun	Jul	Aug	Sep	Oct	Nov	Dec	Total
0	0	0	1	0	0	0	0	0	0	0	0	1

Arrests:

Jan	Feb	Mar	Apr	May	Jun	Jul	Aug	Sep	Oct	Nov	Dec	Total
0	0	0	0	0	1	0	0	0	0	0	2	3

Verbal warnings:

Jan	Feb	Mar	Apr	May	Jun	Jul	Aug	Sep	Oct	Nov	Dec	Total
8	0	10	0	3	1	5	1	3	2	4	0	37

In addition, the SNPU attends liaison meetings with the Friends group for Grovelands Park. This is particularly important in order to ensure that intelligence about antisocial behaviour and the potential perpetrators of such behaviour is shared to assist in the targeting of resources.

Dog Control

The exercising of dogs in the park is very popular, however, there are two problems associated with this activity. Firstly, some visitors can be frightened or intimidated by loose dogs running free and secondly, dog's excreta is unpleasant, unhygienic and a national concern. To encourage responsible dog ownership Enfield Council applied for dog control orders that were effective from the 1st of November 2007.

Enfield Council's Dog Control Orders.

- **Removal of dog faeces** - Dog faeces must be picked up and removed by the owner.

- **The exclusion of dogs from certain areas** - Dogs are not allowed in fenced areas within the park such as children's playgrounds, multi use games areas and tennis courts.
- **The keeping of dogs on leads by direction** - Dogs must be placed on a lead if asked to do so by an authorized Officer.

Offences against any of the Orders are punishable by way of an **£80 fixed penalty notice**. Authorised officers are Police officers, PCSO's, and certain Council Officers including the Safer Neighbourhood Parks Police who patrol the parks every day. A zero tolerance approach is adopted in relation to all offences against the Orders.

Alcohol controlled area

Grovelands Park falls within an alcohol controlled area. This means that a Police Constable or a PCSO can request that the person refrains from consuming alcohol in a park. If the person does not comply with the request to stop drinking, the maximum fine is £500. This has proved effective within the park with the result that fewer young people are drinking in the park and causing nuisance and disturbance.

Proposed Byelaws for all parks

New Byelaws were introduced in 2011 to further help Enfield Council tackle anti-social behaviour within the parks. The Safer Neighbourhood Parks Unit are responsible for enforcing the new Byelaws, for which the maximum penalty for offences against the Byelaws will be £500. The new Byelaws have had three public consultations over a three year period, and all objections have been settled.

The new Byelaws cover a multitude of potential problems within the parks, but certain byelaws will ultimately make our parks safer places. For example, the Council have received complaints regarding older children intimidating younger children in playgrounds. This type of situation will be able to be dealt with under the new Byelaws, by way of the fact that it will be an offence for children over the age of 14 to enter or remain in a children's playground unless they are in charge of a child under the age of 14.

Feeling safe (7 day park staff rota)

Impressions of safety are considerably enhanced by the presence of park staff. To this end a staff rota has been established to ensure that instead of the previous Monday to Friday day cover, this is extended to include a rotating shift to allow cover to be provided for seven days per week, i.e. to include the busy weekend period and evenings. The rota is constantly reviewed to ensure that it meets the needs and demands of visitors.

A survey conducted in the park during 2010 identified that the overwhelming majority of those surveyed felt either 'very safe' or 'fairly safe', with only two respondents stating that they felt 'fairly unsafe'.

The public respond positively to smart staff who project a positive impression of high standards of care and professionalism. Members of the horticultural maintenance staff are issued with new uniforms including protective boots. Uniform is worn at all times whilst the park is being maintained.

10. Clean and Well Maintained

It is the management aim that all buildings, equipment and landscape features in the park be in a good state of repair and of good appearance. The park gardeners and park manager have the duty of identifying any issues on site. In addition quarterly 'walkabouts' with the Friends help identify recurrent or persistent problems for additional attention.

Improving management of grounds maintenance standards

A review of quality standards has ascertained that they are adequate for Grovelands Park. However, work sheets are to be introduced to tighten the management of those standards, particularly in relation to litter collection and weed control. This will ensure better delivery of these standards, by ensuring that they are completed to time and in a satisfactory manner.

The maintenance of the site is set through a well constructed maintenance schedule complete with quantities, occurrences and total hours required. The specification is attached as a separate document to this plan as Appendix 5.

Grovelands Park

	Quantity	Old Annual Hrs	Revised Annual Hrs	Reason
SHRUB BEDS				
Spring / Summer - maintenance	2255 m ²	1311	240	Reduced Frequency of visits
Autumn / Winter		259	114	Reduced Frequency of visits
HEDGES				
Hedges & Hedgerows	934 m ²	14	14	No Change
HERBACEOUS				
Herbaceous maintenance	38 m ²		14	New
GRASS MAINTENANCE				
Grass Cutting	209,247 m ²	239	407	Re-measure & some mowing changes
Edging & trimming		103	103	No Change
Leaf Clearance		104	104	Due to mowing changes
LITTER CLEARANCE				
Litter Picking & Bin Emptying	31	622	876	Extra 10 dog bins, more litterpicking
Graffiti removal		61	31	Graffiti Team does large areas
PATHS & HARD SURFACES				
Sweep / Blow Paths	4000 m ²	370	277	Reduced Frequency of visits
PLAYGROUNDS & MUGA'S				
Playground - Checking	2	182	182	No Change
PUBLIC CONVENIENCES				
Clean Convenience Daily	1	182	30	No Change
BASKETBALL				
Check court	1		65	
FOOTBALL				
Football - Senior	2 pitches	109	109	No Change
PITCH AND PUTT				
Pitch and Putt course	1 course	1159	1159	No Change
TENNIS				
Check courts, store nets	2 courts	232	76	No Change

WATERCOURSES, PONDS, DITCHES				
Checking, empty & fill	29500 m ²	130	126	No longer put out "Thin Ice" notices
TOTAL		5,077	3,927	

Building maintenance

Buildings are assessed through a condition survey every 3 years by the Council's Property Group and identified works are added to the repair and maintenance programme. The results are then prioritised and funding allocated.

Day-to-day reports of vandalism or wear and tear are dealt with through predetermined response times and prioritised e.g. safety – immediate

The Park Manager periodically reviews progress of works with the Area Surveyor.

Annual Repair and Maintenance of playgrounds

These are undertaken by an external company and this prioritises the repair and maintenance of playgrounds year on year. As part of the capital investment, the Council has during the life of this plan allocated £400K as additional monies for playground works.

The children's play area within Grovelands Park is inspected on a daily basis by park staff with all faults and issues being recorded on log sheets. Any day to day faults or issues are dealt with by the Area Park Manager. Actions may include immediate repair or safely isolating equipment so that it cannot be used.

Independent Quarterly inspections are carried out by the Play Inspection Company and major repairs are undertaken by ARD Ltd. The quarterly inspections reveal a list of priority ranked repairs. During Autumn 2011 all outstanding priority 1 repairs were prioritised to make sure that the entire parks network had an excellent standard of playground safety. This work cost £40k.

The ongoing monitoring continues and the Park service are now tackling the priority 2 repairs to prevent as many issues as possible reaching priority 1 status.

Infrastructure

An annual survey of all infrastructures is conducted by the parks technical officer to identify condition and to ensure that:-

- Immediate health and safety risks are identified
- Longer-term potential health and safety risks are identified Features are fit for purpose (is the path in the right position, constructed of suitable materials, etc)
- Visual and amenity considerations are accounted for (is the design appropriate, should a more attractive wearing course be applied to surfaces, etc)

Fencing and Paths

The parks fence lines surrounding the park are the responsibility of the Parks Service. The parks technical officer maintains the fencing and footpaths through regular inspections to ensure that our fence line and footpaths are in good order.

Day to day maintenance and cleaning of footpaths and the playground equipment are all part of the duties of the grounds maintenance staff.

A further 6 Monthly inspection is carried out to ensure that our fence line and footpaths are in good order

Litter, cleanliness and vandalism

Cleanliness

The park contributes to the Council's overall open space portfolio and as such is subjected to assessment under BVPI 199 (Best Value Performance Indicator). NI 195. Regular litter picking, bin emptying and refuse collection assures that appropriate cleanliness standards are maintained.

The Council's record on cleanliness places it as one of the top performers in London. The maintenance regime for the park of daily bin emptying, daily litter patrols and regular path sweeping ensure that continued high standards are maintained.

Cleanliness is measured in terms of two key indicators, litter and detritus. The BVPI 199 [NI 195] grading system is designed to reflect the way that a member of the public would perceive the local environment. The park is litter picked each morning on opening, and again after lunch times if required. Enfield Council invests a great deal in the cleaning up of litter in terms of both time and cost; therefore, prevention is a key strategy.

Re-siting of litter bins - this will assist in the control of litter by siting infrequently used bins nearer to areas where litter tends to accumulate and where no provision has been made e.g. by sports areas. Grovelands park introduced the use of the Glasdon Jubilee litter bin which is produced using 100% recycled material. The design of this bin will help achieve improved grades for NI 195 as it has been designed with anti-littering, anti-graffiti, anti-flyposting and anti-staining benefits. The chamfered apertures and domed hood of the bin will help reduce littering and the cigarette stubber plate will help to reduce smoking related litter. These bins have been sited in high use areas eg main entrance and café. It is intended that covered bins will be purchased for future provision of replacement bins as these can be used for all types of litter including dog litter. To this end a capital bid has been agreed to replace all defective bins with black litter bins over a four year period.

The issuing of Fixed Penalty Notices by Safer Neighbourhoods Parks Unit is seen as vital in combating the source of the problem in parks. All enforcement staff are encouraged to operate a zero tolerance policy when encountering a littering offence.

Toilets

Toilets are cleaned daily before the parks open and they are further inspected during the course of the day by parks staff with any deficiencies corrected.

Dog Bins

The Council encourages all dog owners to clean up after their dog. Special bins coloured red are strategically provided around the park principally by gates to facilitate disposal of collected waste.

An information leaflet "you and your dog" is available through various leisure providers and the council internet website.

The Council previously operated a specific dog bin-emptying contract that provided for bin emptying on a once or twice a week cycle depending on volume of usage. This is now undertaken by in-house staff and has proved more responsive to demand.

Graffiti

The Parks team take their responsibility for providing a clean and tidy borough very seriously, the removal of graffiti is seen as a key element of that objective. Parks Operational staff report all graffiti for removal and investigation, graffiti is removed as soon as practicable with racist or offensive graffiti being removed within 24 hours. To achieve this ambitious target the council have created a dedicated team managed by the Envirocrime Crime Unit (ECU) trained in graffiti removal and record keeping of the 'Tags' to identify persistent offenders.

11. Sustainability

The Council's Strategic documents have, as one of the policy priorities, the integration of the principles of 'sustainability' into the decision making process of the Council.

A number of specific guidelines have been set out in order to work towards an Environment Management System based on the requirements of BS EN ISO 14001:1996.

These include:-

- Enfield Council Travel Plan
- Green Workplace Guide
- Enfield Policy on Sustainable Design and Construction
- State of the Environment Report
- Environmental Purchasing Guide
- Enfield 2020

'Enfield 2020 is the Council's ambitious **Sustainability Programme and Action Plan**. The focus of Enfield 2020 is about saving money on energy bills, creating local jobs, improving our environment, reducing waste and improving public health. The programme has a '2020 Vision' to:

1. Significantly improve the sustainability of the Borough of Enfield and Enfield Council by 2020
2. Deliver significant **economic, environmental** and **social** benefits for all of Enfield's stakeholders'

There are a number of measures designed to enhance the sustainability and environment management in the park, including:

- The Council has adopted the principles of Local Agenda 21.
- It has adopted a set of policies on environmental and sustainability matters and it is the intention to run the Park in line with these policies.
- These include the use of sustainable practices, methods and products whenever possible.

Planting of main entrance and side entrances

The advantage from the point of view of sustainability is that this style of planting involves minimal maintenance in the form of irrigation and fertilisation following establishment in the first season. For this reason it should be possible to eliminate the use of water and chemicals on these beds, unlike the culture of floral bedding which is more traditionally seen at park entrances or in other formal situations. Provision will be made for the erection of an information board in order to inform the public of the advantages of using similar planting in an urban or suburban private garden setting, whilst at the same time providing colour and interest throughout the year. This style is seen as an ideal blueprint for attractive planting at a time of increasing drought and public concerns about global warming.

Review of energy and water consumption

The Energy Unit of the Council has carried out an audit of consumption including buildings in Grovelands Park on the 24th January 2007, Appendix 8. This review has been used to assist decisions relating to buildings in the Park.

Development of recycling area

The maintenance yard is used as a messing facility for staff, garaging for machinery and equipment, and storage for consumables. In line with the policy to recycle as much waste

as possible, an increasing amount of waste from maintenance operations is reused on site. Five years ago a set of composting bays for parks waste were set up on site. These bays are used to process almost all green waste produced on site and the contents of these are used on planted areas.

Grovelands Park is used as a collection point for the recycling of Christmas trees and they are shredded on site (using a tractor-mounted shredder).

Following a pilot scheme in 2009 to assess how much waste can be recycled in Grovelands Park, permanent receptacles have been positioned adjacent to the café area. This is a joint initiative with parks purchasing the containers and Waste Services collecting and recycling contents.

Pesticide/ Herbicides/ Insecticides

The Council has a policy of limiting the use of pesticides as far as possible. In terms of grounds maintenance, particular procedures have been written into maintenance regimes to achieve these. Within Grovelands Park treatment is normally only used on the bowling and golf greens.

For weed, pest and disease control, the parks will always pursue cultural control practices in the first instance. Chemical treatment will only be permitted, when a particular problem is exceptional, or deemed non-viable or impractical by any other methods. Parks will seek to reduce the amount of chemical applied in ground maintenance situations year on year. Pesticide minimisation policy attached as Appendix 10.

This is monitored and assessed through the annual returns made to the Local Water Authority

Reducing Water Usage

The Council takes seriously its obligations to reduce the overall consumption of water. In this task parks are using bedding varieties that will tolerate less watering whilst retaining a good flowering ability. In a similar way we are experimenting with drought resistant shrub and herbaceous species in bedding displays and shrub and herbaceous beds. The Council are looking to increase artesian water by installing new wells in appropriate locations within parks.

Mulching for weed control has become widely used at Grovelands Park; this has the added benefit of reducing the watering requirement. Currently some 75% of all shrub beds are mulched and all newly installed or replanted beds are mulched. This generally helps establishment and reduces water usage.

Green Waste

The use of day-to-day green waste such as tree clippings and leaf mulch has increased dramatically over the last three years, to the extent that the purchasing of mulch is now not required as this is now generated completely within Enfield's Parks.

The Parks Service has embarked upon a wider green waste project for the purpose of composting and recycling green waste, with Grovelands Park being one of the pilot sites commenced in 2000/01.

Our green waste management policy is now in effect and as the composting facility comes fully on-line the proportion of mulched beds will increase up to an estimated potential 85% of all beds.

Peat Usage

No peat is used in Grovelands Park. It is a requirement of procurement procedures and our suppliers have confirmed that all bought-in bedding stock is grown with non-peat compost.

Sourcing Materials and Plants

Apart from the problems of sourcing plants that have been grown in peat free mediums, we also undertake careful purchasing procedures to encourage local supply and local sourcing of materials. In particular we discourage the purchasing of imported tree and shrub stock e.g. we use local growers from the Lea Valley area where possible. This, we believe, will safeguard the environment and minimise fossil fuel used in transporting goods to and fro.

Utility Usage

As part of Enfield 2020 we are currently looking at our electricity, gas and water charges on each site. Parks are working in unison with the Council Energy Management Team on a reduction programme within each park/facility.

Adopting New Green Ideas and Innovations

Enfield's Parks has attained Beacon Council Status for improving Urban Green Space. We have become one of the leading park authorities in Britain in putting environmental conservation in action. We are pursuing this idea through hard work and diligence but also through adoption of new ideas and innovations. Building on community support and enthusiasm has been the key to this.

Portable sawmill

Parks have purchased a Norwood Lumbermate portable sawmill for the intention of recycling. When suitable timber becomes available, during turbulent weather or trees have to be felled for any reason, e.g. health and safety, dead or diseased, it is proposed where possible to re-use the timber on site. We are also, currently working with our engineers department to recycle wood from our parks for bridges that we have commissioned within our parks and bridleways.

The sawmill can handle logs up to 31" in diameter (77.5cm) and mill boards and beams up to 24" wide (60cm) and 13ft long (3.9m).

The sawmill is fully portable coming with a trailer that can be towed behind a car or truck on the highway or to site for cutting.

Sustainable management of buildings

The Energy Team has assessed all buildings in the Park in terms of energy and water consumption during 2007. A feasibility study has been completed which indicates what measures need to be taken to reduce consumption to sustainable levels. A report has been presented to Property Services in order that they can consider and include the required works within the annual R&M works programme.

Maintenance

We will maintain the site in accordance with the principles outlined in the management plan and utilise the allocated resources efficiently and effectively.

Review of maintenance machinery

Following a review of standards in 2006, a funding programme was approved to purchase a range of equipment and machinery for the in-house grounds maintenance unit across the Borough. This included an allocation of £33,000 for the Western area, of which Grovelands Park is part and will do much to improve standards. Further investment made in 2009 and 2012. In addition, it is proposed to review the sustainability of the machinery and equipment used for the grounds maintenance operation, considering:

- Fuel usage (e.g. could the machinery use bio fuels, LPG, etc.)
- Can machinery be purchased which increases the recycling of green waste? e.g. wood chippers

- Does equipment operate in an environmentally-friendly way? e.g. can mulch mowers be used, which would reduce all grass arisings to a fine and evenly-spread mulch to reduce nuisance caused by clippings on paths at peak periods and provide a natural feed for lawn areas

Reducing our Ecological Footprint

Parks currently use 5% bio-diesel as an additive in all fuels that has been recommended for industry.

In addition parks also add “Additone” (EC-1500 Ashless) that reduces emissions and increases efficiency.

It does this by reducing the pollutant emissions from the vehicle exhaust. Emissions of hydrocarbons, particulate and nitrogen oxides (NOx) are all reduced.

Fuel consumption is also reduced. With an improvement in fuel economy there is an additional environmental gain to be seen in a reduction in greenhouse gases, especially carbon dioxide (CO₂).

Other Assets and facilities

Other facilities and users on site i.e. the Grovelands Park Bowling Club have all be inducted in the Council policies of waste minimalisation and energy usage. The Park Manager has regular meetings with those involved to ensure compliance.

12. Conservation and Heritage

The Council is committed to improving biodiversity parks and has entered into Higher Level Stewardship agreement with Natural England at 6 parks across the borough, including Grovelands.

Habitats

Grovelands Park supports a number of habitats including, semi-natural woodland, parkland with scattered trees (remnants of wood pasture with veteran trees underlain with either semi-improved grassland or amenity grassland), standing water (the serpentine lake) and a stream. Of the 37 hectares of parkland, 8 hectares is woodland, 3 hectares lake and 27 hectares parkland (amenity/ semi improved grassland with trees) and landscape planting.

Figure 1 show the broad habitat types present within the park and Table 1 shows the area of different habitat types recorded during the 2008 Greater London Authority habitat survey. A description of the different habitats, existing and proposed management, and management strategies is given in the sections below.

Figure 1 – Broad habitat types

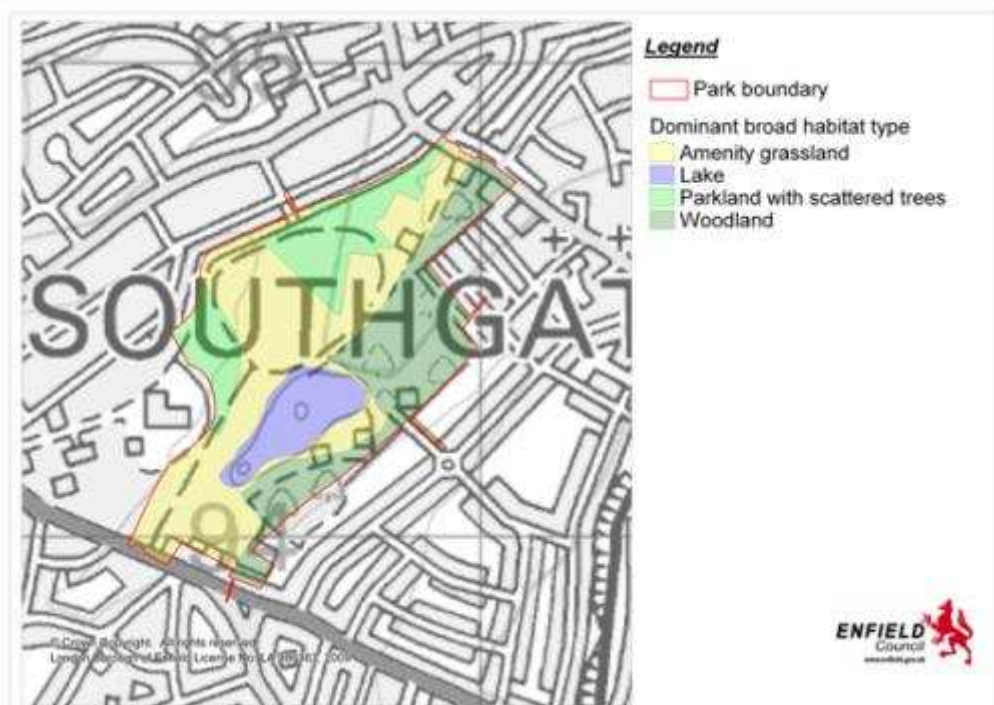


Table 1 Habitats Types and Area within Grovelands Park from 2008 GLA Habitat Survey of Enfield

Habitat Type	Area (hectares)
Amenity grassland	12.41
Bare artificial habitat	0.9
Bracken	0.09
Native broadleaved woodland	8.44
Neutral grassland (semi-improved)	2.33
Non-native broadleaved woodland	0.29
Planted shrubbery	0.59
Scattered trees	5.28
Scrub	2.75
Standing water	3.11
Tall herbs	0.62

Species

31 bird species, 140 species of vascular plants, 21 butterfly species and six species of bat have been recorded since 2000 with 13 of these being London Biodiversity Action Plan and 5 UK Biodiversity Action Plan species. Appendix 11 gives records of the species observed in the park since the year 2000.

Ecological surveys and record keeping

Habitat surveys of the park are periodically undertaken through GLA open spaces surveys, the last of which was undertaken in 2008. In addition surveys are undertaken by a number of amateur naturalist and wildlife groups including friends of the parks, and often being led and or coordinated by parks Partnerships & Projects staff. The council currently subscribes to Greenspace Information for Greater London who collates environmental records on its behalf, records from council and public surveys of the park are periodically passed onto the records centre. Results for Grovelands Park are included in Appendix 12.

The Enfield Biodiversity Action Plan and national biodiversity schemes

Enfield Council have produced a draft Biodiversity Action Plan (BAP) for the borough and positive conservation management of the Borough's Sites of Importance for Nature Conservation (SINCs) will be a vital component of this. The plan was adopted by the council in November 2011. Two of the core objectives of the plan relate to Grovelands Park:

- To implement ecological management plans for all council managed Local Wildlife Sites by 2015, and to encourage other landowners to implement management plans on sites not managed by the council
- To identify all sites suitable for inclusion for payment through Higher Level Stewardship and the England Woodland Grant Scheme and bring these sites into management under these schemes where appropriate

The council is currently investigating bringing its SINCs into Natural England's Higher Level Stewardship scheme (a national scheme designed to deliver significant environmental benefits for high priority habitats and areas) and or the Forestry Commission's England Woodland Grant Scheme. The BAP and entry into grant schemes will ensure that there is a coordinated approach to biodiversity management both across the borough and within parks ensuring that maximum biodiversity benefits are achieved. Appointment to a Biodiversity Officer position is being recruited to in early 2012 and will work alongside the Partnership & Projects Officers, formally Outreach, and voluntary agencies, including Friends Groups to deliver the Biodiversity action plan.

Higher Level Stewardship Scheme

In 2012 the Parks service entered into a Higher Level Stewardship agreement with Natural England to restore and safeguard some of the Groveland Park's natural habitats, along with five other parks in the borough. Environmental Stewardship is an agri-environment scheme that provides funding to land managers (typically farmers) to deliver effective environmental management on their land and aims to deliver significant environmental benefits in priority areas. The HLS agreement is funded by grant payments from Natural England and lasts for ten years.

The 10 year management options include:

- Management of woodland edges
- Protection of in-field trees on grassland
- Restoration of species-rich semi-natural grassland
- Restoration of grassland for target features
- Supplement for haymaking
- Supplement for small fields
- Educational access

The Biodiversity Officer oversees all aspects of HLS to ensure:

- Work is being carried out in line with our HLS agreed timescale by the Park Service
- Claims are made for any capital works carried out and LBE are receiving the correct payment
- Interested parties/individuals are kept up to date with works
- Information required by park operations or other teams/individuals is available and in an appropriate format
- Developing interpretation boards
- Writing educational access leaflet

Full details of the HLS agreement for Grovelands Park are shown in Appendix 2.

Detailed Analysis

Woodland

The woodland is found to the south and east of the park with a smaller area of secondary woodland on the western boundary adjacent to The Priory Hospital grounds. The woodland is the last remnant of Winchmore Hill woods, which previously extended much more widely through Winchmore Hill. The woodland on the site is probably ancient woodland (meaning that it has been wooded since at least 1600) and was historically managed as coppice with standards (predominantly oak standards with hornbeam coppice).

The woodland canopy is dominated by sessile oak (*Quercus petraea*), beech (*Fagus sylvatica*) and occasional mature hornbeam (*Carpinus betulus*), with a diverse range of shrubs and herbs including wild service tree (*Sorbus torminalis*) and Slender St. John's-wort (*Hypericum pulchrum*). Generally the woodland has a poor structure with an over-dominance of high canopy trees leading to a corresponding lack of shrub, herb and field layers and derelict coppice. The northern section of the woodland was damaged by the 1987 storm and has a more diverse woodland structure.

The council and conservation volunteers undertake some works within the woodland, including some coppice management, the removal of non-native and over-dominant species (principally sycamore (*Acer pseudoplatanus*) Holly (*Ilex x aquifolium*) and rhododendron (*Rhododendron ponticum*)) and the removal of dangerous trees and hanging branches (balancing health and safety considerations with the need to retain dead wood habitat for biodiversity conservation).

A detailed arboricultural management plan, based on the strategy given in Appendix 1, has been prepared by the council's Arboricultural officer and this will be used to inform applications for funding. This details the aims, objectives and prescriptions, for the woodland and the resources required to implement these actions. Actions are likely to include the opening up of the woodland canopy through thinning operation (to enable an enhanced woodland structure to develop), management of the woodland edge and woodland rides for biodiversity (through rotational cutting of scalloped edges), the removal of invasive species and the restoration of previously coppiced areas. Some of these works are incorporated in the HLS agreement.

Grassland

Amenity and semi-improved neutral and acid grassland habitats are found within the park (areas of acid grassland exist in the adjacent hospital grounds). Amenity grassland predominates with the majority of grassland being this habitat type which is regularly cut throughout the growing season.

Areas of semi-improved grassland has been managed in order to increase its species diversity. The majority of this habitat can be found in the north-east and north-west corners of the park. This grassland supports a number of notable plant and invertebrate species including several butterfly species. The semi-improved grassland, meadow areas are cut once a year with cuttings removed to encourage species diversity and to prevent

invasion by scrub as per the HLS agreement. In addition paths are mown through these areas to direct human traffic thereby limiting trampling damage.

Veteran trees

There are a number of veteran trees within the park with many of the large oaks dating back to at least the Repton period. These trees are of considerable cultural and ecological value, providing bird roosting and bat nesting sites and habitat for a number of invertebrate species. These trees have not been intensively maintained in the past, and are presently managed appropriately for trees of their type, and are coronet pruned where necessary.



Other parkland trees

The park has a number of other trees, which are neither veteran nor woodland trees, which are of significant importance from a biodiversity and woodland perspective. A detailed arboricultural management plan, based on the strategy given in Appendix 11, has been prepared by the council's arboricultural officer. The strategy identifies three key arboricultural features; avenues, newly planting trees and lakeside trees and gives details as to how these are managed.

The lake

The lake, constructed in 1797, consists of nearly 3 hectares of open water with a central wooded island. It supports good populations of a number of common and overwintering bird species including:

Tufted duck (*Aythya fuligula*), Pochard (*Aythya farina*), Mallard (*Anas Platyrhynchos*), Canada Goose (*Branta canadensis*), Little Grebe (*Tachybaptus ruficollis*), Moorhen (*Gallinula chloropus*), Coot (*Fulica atra*), Grey Heron (*Ardea cinerea*), Mute Swan (*Cygnus olor*), Black-Headed Gull (*Larus ridibundus*).

Marginal and bankside vegetation is limited; in part due to its designation as a reservoir under the 1975 Reservoir Act (the lake holds 65,442 cubic metres of water) which meaning that any planting or modifications of the banks have to be approved by the reservoir's Panel Engineer. The council is currently investigating how the ecological quality of the lake can be improved whilst remaining compliant with the 1975 Reservoirs Act.

Work on the Lake and waterway has been programmed over the period of the plan. This will involve management of lakeside vegetation to allow light into the lake and establish views across the lake. In addition, work will involve developing wildlife cover and planting marginal vegetation to improve cover in the lake and increase oxygen in the water.

Heritage [See also History in section 2]

In 2008 the Parks department commissioned specialist consultant Atkins to undertake the feasibility study to restore the landscape. The research has determined that in order to fully appreciate the work of Repton and Nash, a future bid will need to address the site in its entirety which means it should include Grovelands parkland, Bourneside Recreation Ground, Priory Healthcare and the Thames Water section of land.

This study has examined the compatibility of a historic restoration and contemporary uses for the park. Further research will need to be conducted to identify possible competing purposes for the site and what impact they will have on a proposed funding bid.

The Grovelands Park leaflet identifies the history of the park as does an interpretation signage within the park.

The parks information on the Council's website features history and information on the park.

Statutory and Non Statutory Obligations

Grade II Listed Features

Grovelands Park is included in the English Heritage's Historic Parks and Gardens Register and has a grade II listed designation as it is a typical example of a Repton and Nash collaboration. In this sense, the house, gardens and park should be considered as a single unit when planning any future changes to the landscape.

The built environment and archaeology are protected by the National Heritage Act 1983 (amended 2002) and the Planning (Listed Buildings and Conservation Areas) Act 1990.

The key national guidance includes Planning Policy Guidance 15 (Planning and the Historic Environment), Planning Policy Guidance 16 (Archaeology and Planning), and Planning Policy Statement 1 (Delivering Sustainable Development).

Locally, the Park is designated in the saved UDP policies under chapter 7.4.3:Historic Landscape as a site of special local interest

The site contains a number of other important features including:-

- Ornamental gates at the Bourne Hill entrance (Inverforth Gate)
- Cafeteria building, which, although not in itself very important, probably marks the site of a former building, possibly a summer house, with views across the lake to the main house and vice versa.
- Ha-ha ditch and wall on garden boundary, south of the house.
- The avenue of mature trees lining an original Repton path that leads west from the north end of the lake commemorates the mayors of Southgate, is significant as it provides evidence of the civic pride invested in the park and of the administrative and political history of the area's local government. These trees have also limited views between the area to the west of the lake and the large space to its north.
- A bandstand to the south of the Café survives archaeologically as a concrete paved platform, providing further evidence of the level of activity within the park and its social role.

Site of Borough Importance Grade II for Nature Conservation

Grovelands Park and the adjacent Priory Hospital and grounds are designated as a Site of Borough Importance Grade II for Nature Conservation (SBINC) on the Unitary Development Plan Proposals map and the Draft Local Development Framework Proposals map. The SBINC covers some 47 hectares of land. Habitats include parkland with trees, native broadleaf woodland, veteran trees, standing and running water and semi-improved acid and neutral grassland.

SBINC's contain the best examples of the habitats that are of particular importance at a borough level. They are protected through planning policy at both a London, Regional and National level. Key national planning guidance includes Planning Policy Statement 9 - Biodiversity and Geological Conservation.

13. Community Involvement

This is crucial to the development and enhancement of Grovelands Park and has been improved by:

'Friends of Grovelands Park'

As part of the Council's policy in respect to Best Value and Local Agenda21 it is committed to increase community participation in the management of major facilities such as Grovelands Park.

A 'Friends of Grovelands Park' group was established in 2001. Local residents, visitors and persons representing such organisations as the local Police, have become actively involved. The Group has a formal Committee and meets publicly every 3 months.

The group have signed up to a new formal agreement to improve the level of co-operation between the Friends, the Council and other key stakeholders in the community based on a model agreed by the Council. Previously, a Council representative has chaired joint meetings, however, as part of the new agreement meetings are chaired and run by the Friends committee. The Friends of Grovelands Park have a strong organisation that has been in existence for several years. The agreement clearly identifies the status and aims of the group. It also seeks to ensure issues such as health and safety, open access, and management issues are correctly addressed. The new agreement covers:

- Statement of intent
- Representation
- Group attendance by other stakeholders
- Aims and objectives
- Acting in a democratic manner with no discrimination
- Involvement in decision-making
- Encouragement to assist in conservation tasks
- Encouragement to promote events and activities within its Park

A copy of the Agreement, together with minutes from their last meeting is shown in Appendix 12

Encouragement of Voluntary Friends and Conservation Groups provide opportunities for improvements for parks and open spaces without any increase in expenditure. Groups such as the 'Friends of Grovelands Park' have the chance to apply for funding not available to Enfield Council and can enhance the Council's parks and open spaces for the wider community, whilst giving those involved a sense of ownership.

Grovelands Park has an active Friends Group with strong links to a nearby community led conservation area - Woodcroft Open Space (A Breathing Spaces winner 2006).

The Group was successful in securing funding from Enfield Council to purchase a notice board in which to promote events, the Friends Group and to inform the local and visiting park users.

The Friends and Partnerships & Projects plan to create a self-guided walk through areas of interest via way markers & literature. The creation of a permanent pathway, by volunteers, Friends and Partnerships & Projects, on a well-used desire line through boundary woodland, forms part of the self guided walk. Trenches have been dug and the path has been formed using reclaimed railway sleepers laid to contain hogging (a mixture of stones & sand). Culverts under the existing pathway have been cleared with brambles and holly cut back. The Friends secured additional funding from the Council's Friend fund in 2008 and 2010 to complete the Boardwalk. This is to be undertaken in three sessions, the first commenced in April '09 working with Enfield Conservation Volunteers and a further seven

meters were completed in September 2010. Further details of community involvement and events are contained within section 14 marketing.



Partnerships & Projects and Enfield Conservation Volunteers installing a new woodland walkway in Grovelands Park



Completed section of walkway

Representatives of the Friends of Enfield's Parks and Open Spaces had been invited by Enfield Council Parks Department to attend annual meetings of the Friends of Parks Forum. The Forum Meetings that are facilitated by Parks Officers provide Friends Groups with an opportunity to receive up to date information in the form of brief presentations from Senior Management Team Members on all on areas of Operational and Service Delivery. At the meetings, Friends are encouraged to raise and discuss issues of concern in their own and other Parks and Open Spaces.

Members of Enfield's Friends of Parks Forum also meet on a one off basis when required. The latest of these meetings being an event to consult on the Draft Parks and Open Spaces Strategy. Representatives of Environmental and Sports and Leisure Organisations have also been encouraged to attend this event to ensure that the widest possible mix of Stakeholder views are obtained.

The Friends of Enfield's Parks and Open Spaces are represented at meetings of the London Wide Friends of Parks Forum that meets quarterly to discuss Parks and Environmental issues that are common to all 33 London Boroughs. Feedback from these meetings is circulated to all Enfield Friends of Parks Groups.

Enfield is also represented at the National Open Spaces Forum that meets twice a year to discuss relevant National Issues.

The number of Friends Groups of Parks has now increased to 25 in total. Many groups are active in organising events, including working groups to tackle conservation activities. A number of groups have been extremely successful in their fundraising activities to support project work and purchases of a variety of equipment to support play and exercise activities.

During 2010, the possibility of developing the Friends of Parks Forum as a stand alone constituted organisation was investigated. At a Friends of Parks Conference held on 26th November, a presentation was given by Sara Royal of the Birmingham Open Spaces Forum on how their Forum had developed. At the end of the Conference, Friends Groups present were notified of a meeting arranged for December 2010 at Enfield Voluntary Action to discuss and plan the development of the Friends of Parks Forum as a stand alone organisation. Representatives of nine Enfield Friends of Parks Groups attended this meeting that was felt to be a success. Representatives of the Friends of Enfield's Parks and Open Spaces formed a Friends Consortium in early 2011 to discuss issues of common interest and to offer support and guidance to each other. At meetings, Friends are encouraged to raise and discuss issues of concern in their own and other Parks and Open Spaces. Council Officers do not have a presence as a right at Consortium Meetings but are invited to attend when information on a specific area is required by members. Elected Members also attend by invitation. To date, the Consortium has held five meetings and, on average, ten Friends Groups are represented. Minutes of Consortium Meetings are circulated to all 24 Friends of Parks Groups.

Enfield Council recognises the Consortium as the initial point of consultation on wider Parks issues.

Annual Friends of Parks Conferences are held in November at the Millfield Theatre and are attended by representatives of 19 Friends of Parks Groups. Working Groups discuss a number of issues including Common Areas of improvement, Reductions in Budget, Funding for Wildlife and Sustainability Projects, Improved Community Liaison and Working in Partnership / Volunteering.

Key Discussion Points from Conference Workshops included:

- Bringing disused/underused Park Buildings into use.
- Expertise on habitats and species is required in the council to promote wildlife and management.
- Ponds, Lakes and Brooks in Parks – Knowledge is required on how to manage these to promote a balance of wildlife and to discourage pollution.
- Improved communication - E mail lists / Up to date Notice Boards / Friends of Parks Logos and Letterheads.
- Visible identification for Friends of Parks – Badges / High Visibility Jackets / T Shirts etc.
- Central Gathering Point in Park – Café / Community Hall etc.
- Annual or regular Community Events.
- Outreach to Schools, Residents Associations, Local Businesses etc.
- Monitoring of Maintenance Plans by Friends of Parks should work really well.
- Volunteers – Insurance issues are a worry for many Friends Groups. Once an idea is up and running, people are attracted to volunteering on projects such as horticultural maintenance and locking of Parks.
- Partnership working is an obvious advantage to both the council and Friends. It works well with funding to support partnership projects.

Friends of Parks Groups and the Parks Partnerships & Projects Services are actively working with Voluntary and Community Organisations representing service users with a

range of disabilities to ensure their inclusion in all areas of Parks activities including volunteer opportunities, events planning, conservation working groups and membership of Friends of Parks Groups.

A wide variety of Voluntary and Community Organisations undertake group volunteering activities in our Parks and Open Spaces including the development and maintenance of Community Allotments and supporting the work of Parks Operations Staff.

Members of the Friends Group have attended training sessions run jointly by the Parks Department and Enfield Voluntary Action to assist the development of their group and enhance their fundraising knowledge and opportunities. Resulting from training courses attended and further one to one meetings with the Small Groups Worker at Enfield Voluntary Action, the Group is in the process of preparing and adopting a formal Constitution. This will enhance the future development and enhance the range of funding opportunities available to the Group. The Chair and Vice Chair of the Friends Group have attended Funding Surgeries run by the Parks Department to assist them in the application process for Friends of Parks Project Funding.

Woodcroft Wildspace, formerly Woodcroft sportsground, is situated amongst residential properties on Broad Walk, Woodcroft, Downes Court and Woodland Way. The local residents have developed the site for nature conservation. They actively fundraised with the aim to raise a substantial sum to develop the site, to include a community building that would be used for educational purposes. They applied for and were awarded £10,000 from the Breathing Spaces National Lottery Programme grant and have held a number of open days to raise the profile of the site.

A range of activities include regular meetings to discuss how the Park can be enhanced; volunteer work for those interested in wildlife conservation and collecting data on wildlife, carrying out simple tasks that help keep the Park clean and tidy, walks and talks and keeping the group informed of any changes affecting the park.

A number of events and activities have taken place in this past year and a planned programme of activities is being formulated for 2012 involving the Partnerships & Projects Team, the SNPU and the Sport Development team. All information will be placed on the Council website and notice boards.

Encouraging the running of a range of events and activities – as indicated in the SWOT analysis, the events and activities programme has not been extensive enough to engage the local community to full potential in the past. A new way of considering this issue for Grovelands Park has included:

- Making information more accessible - signage has improved at all main entrances to the Park.
- To provide interpretation boards where new landscapes or habitats are created.
- Temporary notices will advertise improvements before and during implementation.
- The style of signage consists of visual imagery rather than the overuse of text, e.g. by using symbols and pictures. This will assist those ethnic minorities with a limited grasp of written English as well as those with learning disabilities.

User surveys were conducted to establish a wider view to inform and guide our thinking shown in the Appendices

Safer Neighbourhood Parks Unit (SNPU)

The SNPU commenced duty on 1st July 2005. Full details are provided within Section 10, Health, Safety and Security

Partnerships & Projects Team

The Partnerships & Projects Team was formed in the spring of 2012 following the reorganisation of the Parks service. The team comprises of one manager and four officers whose duties include supporting “Friends” groups, park walks, volunteer & conservation work, including the management of 25 Conservation and Groundforce Volunteers and encouraging Friends of Parks Groups to arrange appropriate shows & events in their Parks.

Specific duties of the Partnerships & Projects Team include:

- Liaising with the Safer Neighbourhoods Parks Unit to reduce fear of crime within the parks and open spaces.
- Promoting appropriate events and activities.
- Encouraging the development of new “Friends” groups.
- Working with the voluntary and community sector to organise and deliver environmental and conservation projects.
- Working in partnership with schools to encourage participation in conservation and gardening projects.
- Organising and leading guided walks.
- Designing leaflets, maps, and interpretive information to publicise the services of the Partnerships & Projects Team.
- Collection and collation of information relating to visitors’ needs and suggestions to assist in the planning of future services.
- Conducting regular surveys of Park Users in selected Parks.
- Arranging and facilitating consultation events in connection with the planning of Capital Projects such as installation of new playgrounds and green gyms.
- Working with Friends of Parks Groups to identify and apply for external funding to support project development in their Parks.

Pop up “Have your say” events

Since late 2012 the Partnerships & Projects Team have been popping up a gazebo in the park and talking face to face with park users. This has been incredibly successful with Parks staff getting to talk directly to regular users of the park who normally wouldn’t have such an opportunity. The Friends of the Grovelands Park stand side by side with Parks staff and use these events as recruitment opportunities.

This form of consultation seems to really work and it is something that the Partnerships & Projects Team are keen to continue.

Enfield in Bloom

Enfield achieved highly at the London in Bloom awards considering 29 boroughs out of 32 enter the competition and our borough collected the highest number of awards for parks. Judges were overall impressed by the maintenance of our parks considering the ground was particularly dry and parched at the time of judging. Grovelands, Oakwood and Forty Hall were particularly praised for their regard to their natural surroundings. Grovelands Park was awarded Gold in London in Bloom for 2009, 2010 and 2011. Judges were particularly impressed with the 'play pathfinder' area in the woodland and how well it fitted in with the natural landscape. They were impressed with the planting particularly at the Broad Walk entrance and cafe area.

Enfield in Bloom and their volunteers cleared, dug over and replanted Broad Walk entrance beds and the cafe beds in spring 09. Further attention by volunteers regarding cutting back and re spacing plants took place in late spring early summer. During 2011

Enfield in Bloom volunteers worked on the Café Beds in spring and autumn maintaining (dividing and replanting) the sustainable planting which was introduced in previous years.

Enfield Anglers Association

Parks are working with the Palmers Green Angling Society to manage under lease the fishing activity in the park, and to undertake self-help maintenance works on the lake and its banks. As much of this falls into the Heritage area, all works are consulted upon with English Heritage.

Volunteers

Volunteering in parks takes various forms, including conservation tasks by groups co-ordinated and supervised by the Partnerships & Projects Team: Enfield Conservation Volunteers and Groundforce Countryside Conservation Volunteers. These meet fortnightly to carry out practical tasks within the parks, such as wildflower planting, tree planting, hedgelaying, coppicing, scrub clearance, pond work and construction projects such as boardwalks, fencing and path creation. Further information is produced in leaflets and available on the website, including the 4-monthly programmes.

The Friends of Parks groups also volunteer their time for meetings and working towards improvements within the parks, sometimes in conjunction with the conservation groups previously mentioned.

On a more informal level, conscientious dog walkers are working towards educating irresponsible owners to clean up after their dogs, and general visitors often pick up litter as they walk through the parks.

Volunteers have also been recruited within parks to help on the administration side, including supporting the parks survey

The Partnerships & Projects Team are actively working to recruit volunteers from groups under represented as Parks users such as Black and Minority Ethnic Communities and people with disabilities. Contact with these people is gained through partnership working with representative Voluntary and Community Organisations

Probation and Young Offenders Service

Working with the police and probation service, Parks engage and work in partnership, carrying out general maintenance within parks. Risk assessments are carried out by the relevant service prior to work being undertaken with all work being carried out through an on site supervisor.

Parks Business Unit

The Parks Business Unit comprises of one Senior Business Support Officer and 2 Parks Business Support Officers. They are responsible for the management of sports pitch lettings, allotments, events and customer service.

Specific duties include:

General administration and financial duties

- Logging of all complaints [general, corporate complaints and Member Enquiries] onto the M3 system and appropriately assigned to officers for action within the agreed timescales.
- Managing sport pitch booking services, including providing advice and information to users/potential users and letting sport pitches.

- Managing the events booking service, including providing information on forthcoming events and advice and guidance to first time event organisers.
- Managing the allotment service including how to maintain allotment plots, best practice in the management of allotment sites and providing advice to users/potential users who want to apply for an allotment plot.

14. Marketing

Marketing is important to ensure local residents are aware of the benefits the park has to offer, both in terms of facilities and ad hoc events. Positive publicity helps to maintain the parks profile in the community and ensure it is perceived as a current and valid resource. This is particularly important in attracting new visitors.

A marketing strategy has been developed to look specifically at parks and particularly the Green Flag applicants and was rolled out to all parks during 2008.

There is a large amount of competition from other parks and open spaces in and around London therefore it is very important that the right companies and organisations know what Enfield has to offer. In order to promote these parks and to reach potential clients the following actions need to be undertaken:-

- Create a database of potential clients
- Create a media pack for potential clients
- Operate a clear and cost effective pricing structure
- Update the website with the new information
- Create and implement a marketing strategy
- Social networking groups set up to demonstrate popularity and offer a direct marketing tool to promote events
- Introduce an environmental impact fee
- Introduce a grounds maintenance fee

There are a number of ways in which Grovelands Park is currently publicised:-

- Use of local media
- On-site information
- Council website.
- Events

An initial marketing strategy [Appendix 14] was developed at the commencement of this Plan and a new Events/ Marketing Strategy will be finalised and implemented in early 2013.

Use of Local Media

A significant way in which the profile of the Park can be built up and maintained is by creating newsworthy “stories” for the local media, i.e. newspapers, local radio, etc. Press releases are generated for each aspect of the improvements contained in the Management Plan, including:

- Volunteer activity
- Enfield in Bloom activity
- Events
- Sport
- New developments

To maximise the value of the open spaces to the residents of the Borough we will take every opportunity to promote Grovelands Park, through the use of leaflets and other public announcements, promotion of events held on the site and producing press releases.

On-Site Information

There are a number of elements used to publicise the Park and encourage repeat visits. These include:

- The erection of signboards at entrances.
- Erection of temporary notice boards at the site of any improvements. These detail the objective for the works, how they will be carried out and a timescale for implementation.

Council Website

Green Flag Parks including Grovelands Park have a wide variety of information maintained on Council's website. The information on the website is reviewed regularly to ensure that user are provided with informative and accurate content.

The Council website is used to:

- Inform the public about key policies (including any updating or amending of the Management Plan)
- Provide information about key events and activities
- Provide information about the facilities contained within the Park
- Inform residents about changes which may occur in future (e.g. landscape improvements).
- Celebrate the wonderful range of parks and open spaces that exist within the borough

In addition to the Council's own website, there are various external sites that help promote the borough's parks and open spaces. These include:

London parks discovery project – a London Parks and Gardens Trust funded project to act as a resource for schools. This can be viewed at <http://www.parkexplorer.org.uk/index.htm> it contains historic context and photos.

The Enfield Conservation Volunteers website at www.ecv.org.uk sets out the events and activities of the group including Grovelands Park

The number 1 internet site for London www.londontown.com also includes an entry for the park with its facilities and feature.

Park Leaflet & Parks Charter

Park leaflets on Grovelands Park, together with the Parks Charter have been updated and are available on the website.

Events

The parks department have drafted an Events strategy with the purpose of assisting the growth, development and management of events over the next 5 years (2012-2017). In addition to assessing the viability of extensive commercial use, Enfield Council endeavours to enhance the use of Parks and Open Spaces by supporting community, cultural and charitable events, funfairs and concerts which in turn provide cultural, social and economic benefits to the borough. The event strategy will compliment the objectives and recommendations included within the Parks and Open Spaces Strategy adopted in April 2010.

The Events Strategy will focus on events that take place in the Borough's parks and open spaces. It will set a vision for developing a vibrant events calendar and secure income to reinvest in services and provide a clear direction for the future of events in Enfield's Parks and Open Spaces.

During September 2011 a feasibility study was conducted to assess the viability of running commercial and large charity events and to provide a clear understanding of the offering, target markets, unique selling features of the Parks and confirm revenue streams. An independent Events Management Company, were commissioned to undertake this study to assess the parks portfolio focusing on 5 key objectives

1. Visit and assess Enfield Parks
2. Research the current event market
3. Assess competitors and their current cost structures
4. Identify revenue opportunities
5. Establish what companies offer broker services to venues

It was identified that there are three different categories of which Enfield parks fall into: Prime, Secondary and unsuitable event Venues. Whilst the latter have no value to the commercial events market owing to limited access due to sporting seasons, small or uneven land, poor transport links and poor parking options they would still remain suitable for community or charity events.

Grovelands Park falls into the secondary event venue offering:

- ▶ good transport links within approximately 15 minute walk
- ▶ good pedestrian and vehicle access
- ▶ flat ground
- ▶ access to parking

Sites that come under this category are suitable for commercial events but on a smaller scale. Farmers markets, arts festivals, car boot sales, craft fairs, travelling theatre groups, brand sampling and special interest events would work well in these areas. In addition, these sites lend themselves very well to community and charity events.

Grovelands Park is currently not being maximized and with appropriate marketing and promotion more events would be attracted to this site having a positive effect on revenues raised for Enfield Council and improved community cohesion and participation. The Park has however increased the number and variety of events that it accommodates. The following events have taken place within Grovelands Park:

- Friends meetings held in Friends meeting House, Church Hill [Quarterly],
- Parks Police Surgeries [May, July, August, September, October] 2008
- Buggy fit classes every Monday and Wednesday, twice a day all year round
- Every Tuesday Fitness classes [commenced April]
- Twice Around The Park – Sponsored Fun Run [April]
- Naming ceremony [March]
- Walk a league for a league [May]
- Sponsored walk [June]
- Children's birthday party [June]
- Big Tidy Up [June]
- Orienteering Training Run [June]
- Parkrun Every Saturday (Monthly commenced July 2010 ongoing)
- Waitrose Food tasting event [July]
- Moth and Bat evening [July]
- MOSAIC Treasure Hunt [July]
- Leukaemia Society Sponsored Walk [July]
- Tesco Mobile Family Fun Day [July]
- Enfield Children and Young Persons Services Summer Programme Arts & Crafts and multi-sports activities[July & August]
- Picnic Gathering [August]
- Wheeled Bin Promotion [October]
- Pushy Mothers Exercise class [Every Friday throughout the year]
- Enfield Running League [December]
- Jingle Bells walk [December]
- Enfield Conservation Volunteers [Woodland management, construction of sleeper and hogging paths, work on woodland footpath, Holly clearance]
- Enfield Conservation Volunteers Work and Improvements to the islands for the nesting of the ducks and other wildlife, access via boat across the lake.[Feb]
- Planting sessions with Friends and local community to plant Bulbs and plants adjacent to the Broadwalk and the stream
- Planting sessions with Enfield in Bloom and local schools.
- Wheeled bin events
- Mini Athletics day
- Bat walk April

Events planned for 2013

Parkrun continues Every Saturday

Leukaemia Society Sponsored walk 2013 July

Celebrate the Centenary of Grovelands Park

There are also a number of informal activities that are undertaken in the park, these include:

- Tai Chi users
- Rounders
- Walking
- Jogging

The department will continue to review the opportunity to increase voluntary/recreational activity in the park.

The successful 'Walk & Talk' programme has a walk in the park on Saturdays at 10.30am which due to popularity has been extended with a further walk on Mondays starting at 2.00pm and Mondays at 6.30p.m. (commenced Mid May). The walks are led by paid and voluntary walk leaders. Enfield's Partnerships & Projects Team trains voluntary walk leaders and provides support & advice. The 'Walk & Talk' programme began in 2003 in selected Parks working in partnership with Sports development, Age Concern, Over Fifties forum, local community groups and PCT to provide walks in the Borough. The walks provide a regular free event where people can meet others, walk at their own pace & level of fitness and be led by trained leaders.

Grovelands hosts a weekly free 5km timed run [jog or walk] and is open to all abilities regardless of whether taking part as an established runner, wannabe runner or simply to improve health and fitness. It is held every Saturday at 9.00am and organised by volunteers. It is advertised widely to attract local people to join and provides an opportunity to meet at the park café for refreshments and socialising following the run.

Members of McDonalds staff, the Friends of Grovelands Park and Street Hawks joined forces with Enfield Council Parks and Waste Management officers to give Grovelands Park a spring clean as part of the Capital Clean Up and Keep Britain Tidy Big Tidy Up campaigns. Over twenty staff members of McDonalds staff from various branches in the Borough worked alongside members of the Friends of Grovelands Park and Enfield Street Hawks collecting nearly fifteen sacks of litter from the Southgate park. Comments to the local newspaper from the Friends of Grovelands said: "Enfield's parks are the Borough's greatest asset and Grovelands is certainly one of the most beautiful. Litter blights London, although Enfield is one of the cleanest boroughs in the capital. But we must all do our bit, not just leave it all up to the council to pick litter up and ensure we keep Britain, London and Enfield tidy."



Big Tidy up campaign in Grovelands park – June 2010

The Partnerships & Projects Team of the Parks service organise a number of events including guided walks, usually with a theme, which may extend to a greater area than the park. They also organise volunteer work activities, some involving local schools and other groups.

Grovelands Park Evening Bat Walk – April 2012 – 8.15pm. At dusk as the sun sets, bats take to the skies at Grovelands Park and become visible as they hunt for food. This was the first chance for visitors on the bat walk to get a closer look at bats. In these hushed surroundings and using tracking equipment and high powered torches, the bat group area able to illuminate areas of the park where the bats are flying overhead hunting for insects.

Members of the Herts & Middlesex Bat Group were on hand for this celebration of Enfield's bats to give a brief talk, showing everyone some pictures and demonstrating their special echolocation detecting equipment.

The equipment was passed around for visitors to try out their tracking skills. When the equipment emits distinctive sonar bat noises this signals the presence of bats in their immediate area. At this point the bats become visible. This event was free and well attended. It is hoped to repeat the event in 2013.

Planned event for 2013 to celebrate the Centenary of Grovelands Park:

On April 13th 2013 it will be 100 hundred years since the grounds of Grovelands were opened as a public park. The Friends of Grovelands Park are proposing that the historic occasion of the centenary should be celebrated in a special way with a series of events commemorations and publications involving and benefiting the local community, who share and enjoy this wonderful local amenity.

During 2011 at one of the Friends of Grovelands Park meeting it was agreed that a sub committee would be formed to meet and develop ideas for the centenary. As the actual centenary date occurs in April when the park and the weather may not be the best it was suggested that our 100 year celebrations should take place on a later weekend date in May in 2013 (Either May 11th & 12th or 18th & 19th) instead of on the actual anniversary date. There was some discussion as to the viability of a one day event (Edwardian Garden Party) versus a weekend event as a form of Grovelands 100 Festival with the Edwardian theme. The latter although more ambitious would have a much bigger impact on the local community and would enhance the prestigious nature of the park its reputation and its significance as a local asset.

Permanent Legacy - It was suggested that the 100 years is marked by some form of permanent sympathetic public Art to be erected within the park. This could take the form of a sculpture, which would be situated on the plinth that once held the 'Aviary'. It was suggested that the design be put out to competition to local artists and Art colleges or to the wider Art World with a specific design brief that would take inspiration from the history and the natural beauty of the park and the place it holds in the memories and affections of the generations that have enjoyed Grovelands.

A second suggestion for a 'Permanent' legacy from the Celebration Year would be to restore the former bandstand to create a covered, firm floored space, where special events such as music recitals, children's story readings, wild life talks or folk dance demonstrations could take place. When not in use for such special events the band stand would create a covered 'picnic' area.

This suggestion would involve repairing the current fixed base of the bandstand with a smooth surface and some form of simple roofed open sided construction in a style in keeping with the natural environment of the park. I.e. wood or wrought iron.

The proposals would require funding beyond the resources of the Friend's of Grovelands. Possible sources identified included the Council, Lottery Funding, Mayor of London grant ,

Corporate donations and sponsorship The friends will work alongside the Partnership and Partnerships & Projects Officer to identify and progress possible sources of funding if an individual or corporate benefactor for this item cannot be found.

The focus of the celebration would be a form of replication of the original opening ceremony with a pageant/ parade through the park lead by the Lord Mayor of London and/or the Mayors of London and Enfield.

Local Schools in costume, local dignitaries and celebrities and all groups of interested parties would be encouraged to participate in this parade. It would include local Scouts, Guides Brownies and Cubs, Church groups and representatives from the Green Flag scheme. Hopefully the parade would be lead by a brass band and a mounted Police Escort, would also include dog walkers, Fitness groups and Bowling Green members. Any other groups who use the park in anyway would be encouraged to be represented. The theme of the pageant and all events for the celebrations would be to reflect the history and Edwardian period of the time. The records pertaining to the original opening celebrations 100 years ago will be researched and where possible will be reflected and replicated in what we propose for 2013. The pageant /parade would travel through the park and end up at a focal point for a short ceremony and speech of rededication to the aspirations and value of the park by one (or more) of the dignitaries. A commemorative tree would be planted at this time.

Over the weekend of the celebrations it is proposed that a Marquee will be erected to provide a covered space for an informative and entertaining exhibition of the diverse nature of the park and of the pleasure it has given over the years and continues to give to local residents.

Apart from a main exhibition to illustrate the history of Grovelands featuring archive pictures of the park, house and the original Repton Plan brought up to date with a montage of pictures taken over the last 100 years the various groups or interested parties that have taken part in the pageant would be encouraged to provide modules in the exhibition marquee to reflect their interest in the park. This would include displays of, Wildlife & Birds, Dogs Breeds that use the park Scouts & Guides, Bowling Club, Football teams, Local Police, Enfield Parks Management, Green Flag Organisation and any other relevant groups.

The exhibition would be informative for all ages and a heritage souvenir brochure / pamphlet would be designed and made available in addition to the usual literature to be given out by the various groups for the visitors. Local authors with histories of Grovelands or Winchmore Hill could sell them at this Marquee.

In the event that the take up of interested groups wishing to participate in the exhibition exceeded the space in the marquee overflow 'gazebos' could be placed in an avenue alongside the main Marquee.

The pageant and speeches of dedication would require some focal point from which the audience can be addressed through a public address system. A stage would be erected, equipped with P.A. and lights not just for the purpose of the of the dedication 'ceremony' but also for a varied series of concerts and entertainment's for both the young and for more senior audiences. Subject to both costs and logistics the concerts would be free or if a main event were to take place, there might be an admission charge.

For example over three days there could be a say ' a Light Classical Music Concert ' on Friday, A Folk /Acoustic Concert on Saturday and other choices for Sunday and or Monday to provide something for everybody. Support acts for the main concerts could include local bands and musicians and in the afternoon the stage facilities could be used for children's entertainment, local talent competitions, and a host of other forms of music and dance performances. This stage would afford the opportunity to be inclusive by featuring local ethnic groups such as Irish Dancing, Asian Music and Dance, Greek and Turkish music

groups drawn from the various ethnic groups in the Borough. Chicken Shed could be encouraged to provide a special performance on one of the days.

As this is a very special weekend of celebration and a one off event the local objections to music in the park should be overcome especially if the concerts did not run late into the night and the choice of repertoire was balanced to suit the occasion.

Any celebrations in the park would need to be in keeping with the natural and nostalgic nature of the park itself so we would wish to avoid any brash / loud fairground elements that can be found elsewhere at other events. However, if a sense of celebration is to be created and the event is to provide attractions for children as well as adults some selected and 'period' Carnival style rides could be encouraged to operate: say a traditional roundabout for young children, a traditional helter skelter and traditional bicycle style Ice cream carts with other attractions that reflect the Edwardian nostalgic feel of the occasion.

Enfield has experience of organising children's events in other parks so some similar children's events and experiences should be created over this weekend. A children's painting competition to get the best picture of the park, wildlife interest events, history and nature trails, country dancing etc.

As the intention is to both celebrate the park and also to draw community interest to it there should be some events in the programme for adults. Short talks on the wild life, trees and the park ecology could be given from the band stand or in the Marquee or other covered spaces

Many people use the park for jogging and walking to keep fit. Local gyms could be invited to give demonstrations of fitness exercises for all ages in various parts of the park.

Football is popular within the park so training demonstrations hosted by local Football stars could be given for children. Some local teams may wish to organise a celebratory football match between a Grovelands 20013 11 and Groveland's 1913 11 with each team dressed in kit to reflect the period. One half with a modern ball and one half with a leather one. Although there are no Rugby pitches in the park children do play and practice with Rugby balls so Saracens should be persuaded to run a display of 'mini rugby' and have some of their key players on hand to show kids how to pass the ball .

Tennis courts and basket ball courts are used in the park so local tennis stars (e.g. Jo Jury) could be asked to give some tennis demonstrations or lessons for children and the same provided by professional basket ball trainers/ players for the teenagers who play basket ball or wish to learn more about it.

To reflect the nostalgic nature of the event it was suggested that some experts like the Unthank sisters set up a 'flash clog dance 'as they did in York for their TV show with demonstrations and lessons dotted around the park randomly.

Random 'street theatre' from local drama groups should be encouraged within the park during the period of the festivities to reflect events and the history of the community over the last 100 years.

The bowls club operates within its own enclosed world within the park but is a mystery to many who walk by the gates. The Bowls club could be encouraged to have some open sessions and demonstrations to allow the public to learn more about their sport.

The focal point of the park and indeed the reason the park exists is because of Grovelands House. Whilst it is appreciated that house is now used as a private hospital and without intruding on the patients, the current owners could be approached and encouraged to have the house and gardens open to the public for one of the days as they have done in the past. There could be a display of the history of the house and the Repton plan for the grounds set up in one of the rooms.

The Friends Group will be responsible for the organisation and planning of this ambitious event and will receive support from the Partnerships & Projects Officer in addition to the Senior Business Support Officer within the Parks team to progress the above suggestions and bring the centenary event into fruition.

The Parks Business Unit has an officer responsible for the management of events. This includes regulation, co-ordination and publicising. The aim is to increase the number of events taking place in Grovelands Park over the period of the action plan.

Before each event, the organiser is required to provide evidence of experience and planning by completing an events questionnaire and returning it to the Parks Business Unit. Certain criteria must be satisfied before the event can be authorised including adequate organisation for the event, anticipation of numbers and eventualities, health and safety factors including risk assessment where appropriate. The organisers may be required to provide a bond and/or evidence of sufficient public liability insurance depending on the nature and scale of the event.

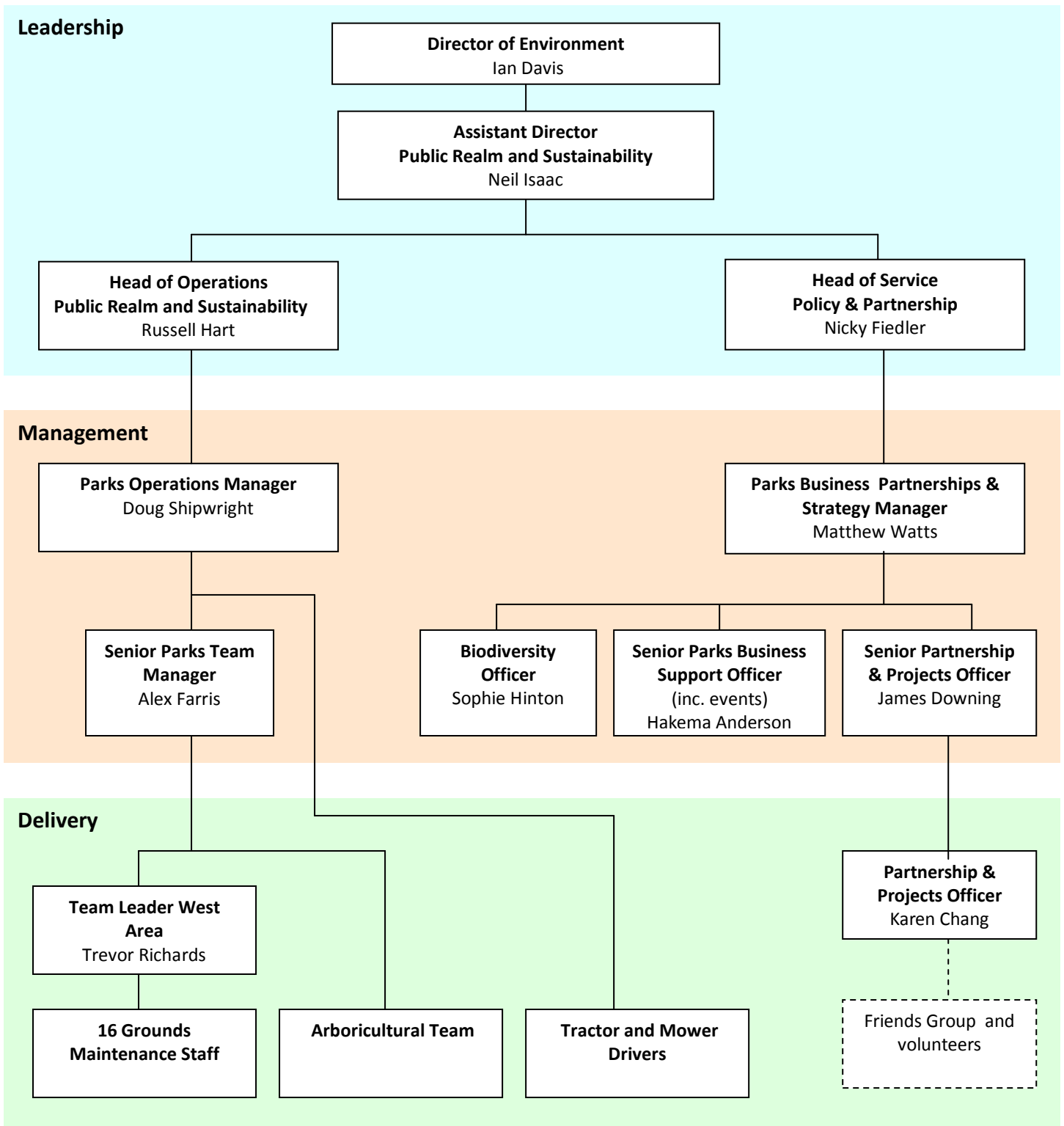
Further information or booking arrangements for Grovelands Park can be made through the Parks Business Unit on 020 8379 1000.

15. Management

The objectives of the park management and staff are to develop the site in such a way as to improve the site and enhance the visitor experience whilst conserving that which is valued in terms of character, heritage and ecology. This will be done through gathering as much information as possible about the site and its users and developing a plan that is robust and meaningful to all.

A new structure has recently been put in place (2012) and resources will be provided to support actions necessary to effectively and efficiently deliver the plan.

Parks West Staffing Structure Chart



Management Arrangements

Management of the park will be progressed through this Plan.

The management of the park is the responsibility of the Parks and Open Spaces Service, which is part of the Council's Environment Group. Enfield's Parks Service is split into two areas, East and the West area. Grovelands Park is part of the west area. The area has a team leader (referred to in this plan as the Park Manager) with responsibility for 50 sites (12 sites being parks and the other 38 sites open spaces).

Management has the responsibility of the horticultural requirements for the park, along with allocation of the parks budget, staff, materials and equipment. Seven day working through contractual overtime now means that parks are attended at weekends to carry out routine inspections and litter picking. Parks maintenance is monitored by the area team leaders to ensure that Parks & Open Spaces are being well maintained, with litter and graffiti being removed promptly, efficiently and effectively.

As part of the rationale for implementation of a more targeted approach to green space provision, a re-allocation of revenue funding may be considered, particularly in relation to grounds maintenance improvements (litter collection, etc) due of its high profile, Grovelands Park may need to draw funding away from less-used areas. This could be achieved by:

- Introducing lower-profile maintenance of grass areas, e.g. by introducing far more floral meadow to green spaces (apart from sporting or ornamental areas).
- Working closely with Street Cleansing Team, there is currently a trial in other major parks in the borough for the removal of litter and litter bin waste from site. This will reduce transportation by parks vehicle improving the carbon footprint

Improving management of grounds maintenance standards

This issue was specifically addressed in the Green Flag inspection of Grovelands Park in 2006. It is considered that standards have significantly improved and a review of quality standards and continuous monitoring has ascertained that grounds maintenance standards are adequate for Grovelands Park. However, work sheets have been introduced to tighten the management of those standards, particularly in relation to litter collection and weed control. This ensures better delivery of these standards.

In late 2010, early 2011, the Parks Department introduced updated and specific maintenance plans for all green flag parks. These new documents are designed to give the parks manager and staff a clear plan of works throughout the whole year. The Friends groups have been provided with copies of these plans to enable them to have a better understanding of the annual programme of work for their park.

Management systems

Parks piloted a review from Nov 2008 to March 2009 for the London Borough of Enfield, working with external consultants. This process themed "systems thinking" involves reviewing and redesigning how the collective functions within Parks & Open Spaces meet the purpose of the system, that for the customer can be defined as; "an enjoyable space that meets my needs."

In taking an outside in approach i.e. we looked at what matters to users of the park and what types of demand do we get e.g. cutting the grass, pruning of shrubs, organise an event, how many and how often. Having completed this exercise we can identify how effectively we currently meet that need or not, and where we don't, what do we have to do differently to meet that need? For example a change to roles, resource, plant & equipment, capital investment etc. To date the case for change has been made and

agreed at Director level and at present the park team are experimenting with work design etc. what does different look like whilst balancing the cost and or benefits in order to make an informed choice of whether to make it permanent or not.

The Authority commissioned under the 'Leaner Board Programme' a further grounds maintenance review, completed in March 2010, this considered the feasibility of 1 grounds maintenance contractor for the borough to include Housing, Highways and non parks related service level agreements (SLA) with corporate buildings and schools. A further Leaner review was conducted and concluded in the Autumn of 2010 on the Business side of the Parks department. An outcome of these reviews has resulted in the Parks department and Waste services being brought together within Environment to produce a more streamlined service.

Train to Gain

Train to Gain, was a service for businesses that provides help to identify and source training that will improve the skills of our workforce and business performance. Parks are committed to investing in the development of the skills and qualifications of park staff to gain their first full Level 2 Amenity Horticulture. The programme was delivered over a nine /ten month period with tutors attending one day per month on site. The high quality training was provided by Capel Manor College, primarily in the aspects of horticulture and arboriculture. There were seven modules of which the first two covered Health and Safety. The remaining five to be optional, relating to the individuals needs linked specifically to their work. Trainees must be aged 19+, have the legal right to work in the United Kingdom and must either be employed, self-employed or working as volunteers.

25 parks staff attended Capel Manor College during 2009 and achieved NVQ level 2, this was an ongoing programme and further training was arranged for April 2010 for those parks staff that require training to NVQ level 2. The courses were limited to groups of ten staff working with tutors from Capel Manor working in our chosen parks.

Apprenticeships

Parks Operations has recognised and addressed the urgent need, not only for the parks maintenance staff 'self development' but also to improve their horticultural skills and knowledge. 6 existing parks staff undertook apprenticeship training courses at Capel Manor Horticultural College during 2010/11. A further 11 new starter apprentices are now employed by Enfield Council. These include 8 horticultural and 3 Trees and Timber placements. The aim of this apprenticeship scheme is to train learners in the basic skills appropriate to their position and to provide a platform of key skills to enable further development at advanced level.

The apprenticeship courses are over 20 months tailored to help with key skills – including literacy and numeracy if applicable and extended to applicants aged 25yrs or over. Horticultural apprentices attend college one day a week term time, Trees and Timber apprentices attend on block release weeks, both courses are at Capel Manor College Enfield. Candidates can progress at their own pace and may be able to complete the course in a shorter time period. Capel Manor have been very encouraging, and have worked with parks to have an important input with specific training needs that could be built into the course i.e.; sports marking, ride on pedestrian mowing etc.

Success in this course leads to the nationally recognised award of apprenticeship in amenity horticulture consisting of City & Guilds 2 Amenity Horticulture, Key Skills Level 1, Emergency First Aid and two legislative or occupational tests and CS30/31, CS38 and CS39 in Arboriculture. Parks are hoping to continue the apprenticeship programme for 2011/12 but this is subject to funding. The current funding for horticultural and arboriculture apprentices is not yet known however Enfield's Parks Service has applied for up to 10 new apprentices should funds become available in 2012.

Training Opportunities

All parks staff who are not qualified are encouraged to attend Capel Manor college who are able to deliver the Level 2 Diploma in Work-Based Horticulture free of charge to any staff who do not already have a previous Level 2 qualification of any sort. This could be academic or vocational. It will be the same Diploma as delivered to the apprentices in recent years and Capel Manor tutors will come to our premises and deliver the units over a period of 10 months, one day a week. The programme is suitable for those with previous horticulture experience who would like to obtain the formal qualifications to reflect their experience.

The only cost to the employer would be £155.00 per person for the registration of the award. The teaching of the programme would be free and it is anticipated 10 -12 parks staff will benefit from this training in 2012

Arboriculture management

A review of tree management has been undertaken entitled "Initial Arboricultural Strategy: Grovelands Park." This involved identification of key features including:

- Woodland
- Historical parkland trees and other significant features
- Avenues
- New planting features
- Lakeside trees

Machinery and equipment for grounds maintenance (£30,000)

As part of a programme of investment during 2012/13, new machinery and equipment has been purchased to ensure that maintenance frequencies are adhered to and that quality standards are maximised. A total allocation of £382,000 plus has been made for the Borough, which will enhance grounds maintenance standards and ensure that frequency standards are met.

	Qty	Item		Total Cost
Geo Browns Implements Ltd	1	Kubota F3680 Front line mower	£14,995.00	£14,995.00
Geo Browns Implements Ltd	1	Kubota M7040 tractor/loader (front bucket)	£29,000.00	£29,000.00
Geo Browns Implements Ltd	3	Kubota Utility Vehicle	£10,583	£31,749.00
Geo Browns Implements Ltd	6	Bradshaw Electric IQ plus buggies	£6,589.00	£39,534.00
Ernest Doe Ltd	2	Ransomes Highway 213D Cylinder Mower	£25,158.00	£50,316.00
Ernest Doe Ltd	1	Rear tractor mounted rotary deck (Trimax)	£8,750.00	£8,750.00
Ernest Doe Ltd	1	Ransomes Gang Units TG4650	£26,104.00	£26,104.00
Ernest Doe Ltd	5	New Holland T5.95	£31850	£159,250
Ernest Doe Ltd	1	Eseki SF320	£22,500	£22,500

Infrastructure (£119,000)

An annual survey of all infrastructure, including footpaths, buildings, car parks, railings, fences and litterbins has been completed. This is further monitored daily by parks staff to assess condition and to ensure that repairs are prioritised. Works completed during 2008 include, Café Area re-landscaping £25,000, Footway Resurfacing 946 sqm £28,500, Playground Seat Bases & Bins £4,000 and Fencing Close Board £8,300. Works completed in 2008/9 including Resurfacing of footways 500 sm £20K, Fencing to boundary fence 50 lm £4K. During 2010 further resurfacing of footways and new boundary fencing amounts to £30K.

Football pitch renovation works

During spring, renovation works to relieve compaction, uneven surfaces and to improve soil fertility are carried out. This includes the use of a Vertidrain to relieve compaction, re-seeding with suitable species of hard-wearing grasses in order to provide an improved quality of surface and to reduce the risk of trip accidents. These will be continued on an annual basis at the end of the football season in May each year.

Playground [£83,000]

The playground was renewed as part of the Capital Investment Programme in parks during 2007 at a cost of £83,000. Grovelands Park has further benefited in 2009 from funding as part of the Pathfinders Play scheme bid creating a timber climbing structure within the woods, to encourage natural play, using natural materials such as wood and natural boulders.

Pathfinders [£50,000]

Enfield is one of 20 authorities nationally to successfully achieve pathfinder status in the first round of invited applications. The Council received £2.5m to spend on improving the provision and access to exciting and challenging play areas across the borough.

This funding presents a unique opportunity for the Council to explore new ways of providing play opportunities for the children of Enfield. The focus of this programme is on the 8 – 13 age group.

Education in partnership with Parks, Highways and External Agencies have developed 28 new play sites including a new adventure playground at Florence Hayes Recreation Ground in Upper Edmonton. All sites were completed by March 2010.



New natural play pathfinder site

The pathfinders scheme was successfully completed in the Spring of 2009 and is situated away from the traditional playground and under the picturesque canopy of ancient woodland, the new play area sits on a gentle slope leading down to a trickling stream; providing a secluded yet challenging natural play environment.

The key principles driving this investment in play are the need to:

- Ensure that playable spaces are inspiring and creative places which offer the opportunity for challenge and risk taking for all children.
- Provide more play spaces closer to where children and young people live.
- Improve access for all children by providing inclusive play spaces.
- Use natural settings alongside more traditional play areas, adding value to the play experience.
- Ensure that children and young people have a clear stake in public space and their neighbours accept their play.
- Raise the profile of the benefits of play and improve community support.
- Involve and engage children in the design and build.

Buildings

Toilet upgrade (£134,000 - 2007)

Capital provision for Grovelands Park was approved as part of a £3.5Million program of investment. The existing toilets have been completely refurbished with new cubicles and sanitary fixtures including hand dryers. Baby changing facilities have also been introduced in both male and female toilets. An extension to the rear of the café houses a brand new ambulant toilet facility with a cubicle installed in accordance with the Disability Discrimination Act. As part of the works, a new access ramp to the café, together with raising the front elevation of the café, formed part of the extensive works completed during 2007.



Before



After



Before



After



There are a number of sources of both internal and external resourcing for both improvements to, and the management of, the park which will be given due consideration. These include:

- Parks staffing resource.

- Parks revenue funding – the revenue budget for Grovelands Park is £84,000
- As part of the rationale for implementation of a more targeted approach to green space provision, a re-allocation of revenue funding may be considered, particularly in relation to grounds maintenance improvements (litter collection, etc). Sites and tasks will be prioritised to give a more focused maintenance regime. This could be achieved by for instance, introducing lower-profile maintenance of grass areas, e.g. by introducing far more floral meadow to green spaces (apart from sporting or ornamental areas).
- Rationalising the use of sporting areas within Parks where there are relatively low levels of usage.
- Planning agreements. In particular, Section 106 agreements can be used to achieve environmental improvements.
- Lottery funding The Heritage Fund. If works are carried out which are of outstanding interest and importance to the national heritage, funding is provided for whole-park projects, the conservation of park features or park activities. Grants are available from £50,000 to £5 million for a period of up to five years. Projects must be designed to involve all stakeholders, must demonstrate sustainability and must demonstrate the heritage value of the park in question.
- Your Heritage Grants are available from the Heritage Lottery Fund, and are for projects of between £5,000 and £50,000 in value.
- Local Heritage Initiatives. To assist local communities in the preservation of their environment, landmarks and traditions including archaeological, natural, built and industrial heritage. A community group such as the Friends Group for Grovelands Park can investigate and celebrate a historic park, prepare a public exhibition in a park, and repair a feature. Up to 100% of project costs between values of £3,000 and £25,000 are payable.
- The Partnerships & Projects Officer has organised specific funding and training sessions for the Friends of the Parks with specialist organisations in order that they begin to gain the necessary skills in applying for these grants.
- Use of volunteers – by working with the Friends group, there are a number of possibilities including using volunteer support to assist with managing areas within the park, and by using the Friends group to raise funds for specific improvements.
- Private sector funding – this is a potential source for specific projects, particularly in a heavily-used open space such as Grovelands Park. Local businesses may be willing to sponsor improvements in exchange for a sponsorship plaque or local media publicity.



Funding for new uniforms for grounds maintenance staff £3,200 (equates to £110 per person)

- Provision of £10,000 per year, commenced in 2006/7, for improvements to Parks by way of a bidding process via the Friends group. Agreed projects for Grovelands Park for 2007 included £800 for a noticeboard and £325 for running costs and laminator.
- The Friends secured additional funding from the Council's Friend fund in 2008 and 2010 to complete the Boardwalk. Projects for 2009- 2011 are to continue with the boardwalk scheme and also planting of bulbs and plants

16. Action Plan.

The five-year Action Plan is divided into a number of key areas relevant to the management and development of the park, namely:

- Actions
- Target date for completion
- Lead staff
- Resources
- Progress to date
- Review date.

Objectives have been divided between actions to be achieved in short-term, year one, medium term year two / three and longer term targets, year four /five.

Monitoring and Review

The Action Plan identifies the allocation of tasks and the annual review dates. In addition to the Annual Review undertaken by Senior Management, each park has a lead officer at Senior Management Level and a dedicated team working towards the achievement of green flag. Site visits are conducted with a cross section of staff. Action notes recorded and monitored. Meetings of all proposed parks are held regularly. Service standards and performance levels will be the subject of review and modification made as appropriate to maintain user satisfaction levels.

TEN YEAR ACTION PLAN GROVELANDS PARK
SHORT TERM ACTIONS YEAR 1 & 2 - 2007 / 2008

No.	Actions	Target Date	Lead Staff	Resources	Progress To Date	Review Date	Progress
Year 1							
1.	Consolidate new staff rotas to improve cover	Jan 2007	Doug Shipwright	Staff time	Completed	N/A	Implemented with operational staff working over 7 days/week
2.	Introduce smart and welcoming uniforms for maintenance staff	Jan 2007	Doug Shipwright	Staff time	Completed	N/A	Implemented. Annual uniform budget allocated
3.	Assess water and energy consumption to Park buildings	Jan 2007	Tony Corrigan	Staff time Energy Team	Completed	Jan 08	Inspection completed with reports received. Implemented within refurbished toilets and café extension.
4.	Agree new Friends Agreement	Jan 2007	Leila Biscoe	Staff time/ Friends	Completed	N/A	Implemented. Grovelands are one of 14 groups signed up to the Agreement and have submitted bids for funding.
5.	Purchase new machinery and equipment for	Feb 2007	Doug Shipwright	2007 Approved provision	Completed	March 2008	Equipment purchased and details included within management plan under 'Resources'

No.	Actions	Target Date	Lead Staff	Resources	Progress To Date	Review Date	Progress
	grounds maintenance						
6.	Renovate Main entrance – Inverforth Gates	March 2007	Tony Corrigan	Probation Service / Staff time	Completed	Jan 08	Commissioned to Property Services. Woks completed.
7.	Carry out complete refurbishment of toilets. Introduce new disabled facilities including new ramp to Cafe	March 2007	Tony Corrigan	Parks Capital Budget	Completed	N/A	Works commenced 30th April completion date of 6th July 2007. Information signs erected advising public of works during construction period.
8.	Commence Feasibility Study of Park to restore Landscape	March 2007	David Breckenridge	External Funding Possibly HLF	Completed	N/A	Brief written Consultant to be commissions June 2007 Atkins commissioned Report completed.
<p>Parks prepared a design brief to engage a specialist consultant to undertake the landscape evaluation. It is the council's intention to utilise the outcomes of the consultant's recommendations in order to support a future grant funding bid. Due to historical significance of the park, it is most likely that we will submit an application to the Heritage Lottery Fund to seek funding to undertake these improvements.</p> <p>Preliminary research and discussion has determined that in order to fully appreciate the work of Repton and Nash, the bid will need to address the site in its entirety which means it should include Grovelands parkland, Bournside Recreation Ground, Priory Healthcare and the Thames Water section of land.</p> <p>The study has examined the compatibility of a historic restoration and contemporary uses for the park.</p> <p>Further research will need to be conducted to identify possible competing purposes for the site and what impact they will have on a proposed funding bid. It has been noted that there has been some interest in the Bournside Recreation area.</p>							

No.	Actions	Target Date	Lead Staff	Resources	Progress To Date	Review Date	Progress
9.	Complete arboricultural survey of Park	Mar 2007	Alex Campbell	Staff time	Completed	N/A	One year actions completed early May 2007
	Report completed and included within Management Plan. Due to storm damage some delay incurred in commencement. Year one works contracted out and completed May 2007 – cleaning out dead wood from various oaks in woodland edge adjacent to footpaths / coronet pruning of various oaks in grass areas. Ongoing works recorded in Medium term actions.						
10.	Commence Marketing Strategy for Park	April 2007	Gary Quilter	Staff time	Completed	N/A	See comments below
	Signage improved. Leaflet produced and on website together with Management Plan in pdf format. History of park being compiled and will be presented on Interpretation board after consultation with Friends group. Friends conducted survey 9 th /10 th May 2007 to gauge user satisfaction, ascertain users views on events and improvement ideas. Will inform Friends bids.						
11.	Commence assessment survey of infrastructure	Mar 2007	George Bond	Staff time	Completed	March 08	<p>Inspection undertaken. The following works are scheduled. Completed in 2007</p> <ul style="list-style-type: none"> • Priority 1 works to playground after monthly inspection • Resurfacing to footways 300sm • Repairs to perimeter fence
12.	Commence surgery sessions in Park (SNPU)	Mar 2007	John Bobin	Staff time	Implemented	N/A	Sessions held 9 th May 2007
13.	New planting scheme	Apr 2007	Karen Gurrey	Sponsorship/	Completed	Nov	Planting list prepared Jan 07. Planting to

No.	Actions	Target Date	Lead Staff	Resources	Progress To Date	Review Date	Progress
	at main entrance			Parks Revenue budget		07	follow the repair to the damaged main gates. Repair of the gates was deferred until initial works to the café completed – gates repaired end April. Initial planting scheme completed in May
14.	Erect interpretative sign at main entrance	July 2007	John Bobin	Sponsorship/ Parks Revenue budget	Completed	N/A	History of park complete and will be presented in Interpretation board after consultation with Friends group Lectern board installed in front of cafe
15.	Erect new signs following audit	May 2007	John Bobin	Parks Revenue budget	Completed	May 08	One notice board installed by lake/café to include history of parks. Notice board already in situ displaying wildlife info.
16.	Monitor butterfly species	May 2007	Star Lobb	Friends/Dog Walkers	Completed	May 08	Moth and Bat evening held on the 13 th July. Interest in Butterfly monitoring with volunteers obtained.
17.	Move litter bins to reflect needs of visitors	Nov 2007	Trevor Richards	Parks Revenue	Completed	Nov 08	2 litter bins 30 th May 2007 by the main entrance to Queen Elizabeth Drive/Wynchgate. 6 litter bin installed. Audit again in Nov 2008

No.	Objectives	Target Date	Lead Staff	Outcomes against Green Flag Criteria	Resources	Progress To Date	Review Date
Year 2							
1.	Revise planting scheme at Broad walk main entrance	Apr 2008	Karen Gurrey Parks Staff		Parks Gateway budget/	Completed	Nov 08
<p>Planting list prepared Jan 07 and revised in December 07. An initial planting scheme for 2007 followed the repair to the damaged main gates. A revised sustainable scheme was drawn up in November 2007.</p> <ul style="list-style-type: none"> • Area Outside Gate: prune trees overhanging this area. - Completed • 1.5m from wall either side of gate earth to be double dug and herbaceous perennial shrub bed to be planted. Shade resistant turf to be planted from shrub beds to the end of the path. Planting list drawn up. -Completed • Small roundabout in the road – This is too dangerous for EIB to adopt and therefore the Highways Department have been contacted to ensure maintenance is continued. Roundabout planted up. 							
2.	New interpretive sign erected at entrance	April 2008	Tina Heather		Parks Revenue budget	Completed	N/A
<ul style="list-style-type: none"> • Roadside at top of entrance: new welcome sign to include park map. Installed April 2008 							
3.	To bring avenue back to former glory	April 2008	Trevor Richards & Park Staff		Parks Gateway budget	Completed	April 2009
<ul style="list-style-type: none"> • Old tree stumps removed. Elderberry bush cut down on left hand side of entrance. • Soil improver needed for rhododendrons and reduce growth where necessary. New rhododendrons (mixed colours) to be planted to begin the process of bringing avenue back to its former glory. Repeated in 2009. • Yew tree reduced and pruned • Azaleas planted on the four corners of the crossroads <p style="text-align: center;">All works completed</p>							

No.	Objectives	Target Date	Lead Staff	Outcomes against Green Flag Criteria	Resources	Progress To Date	Review Date
4.	Redesign landscape area outside cafe	May 2008	David Breckenridge George Bond		Parks Revenue Budget	Completed	N.A
<ul style="list-style-type: none"> Following the completion of the toilets and improvements to the café consideration to the landscaping has been prioritised. Drawing and specification agreed to install a small hard surface for cars with a boundary, thus preventing parking on the grassed and landscaped areas. Drainage is problematic and small kerb to be build to direct water off landscaped area. Wall by café to be extended. <p style="text-align: center;">All Works completed</p>							
5.	Refurbish Beds outside Café	April 2008	Karen Gurrey Trevor Richards		Parks Revenue Budget	Bed extended and planted around café and hedges trimmed. Completed	Completed
6	Cafe	Feb 2008	Trevor Richards		Parks Revenue Budget	Completed	As appropriate
<p>For health and safety reasons window sills and side wall to the café have been jet washed as Pigeon droppings evident. Pigeon spikes purchased and put up on eaves of café to reduce droppings.</p> <p style="text-align: center;">Jet washed twice and spikes erected.</p>							
7.	Lake to be cleared	May 2008	Doug Shipwright		Parks Revenue Budget	Completed	As appropriate
<p>Lake cleared out in Jan 2008 and repeated 22nd April 2008. Further clearances in 2009</p> <p>Lake inspected Feb 2008 in compliance with Reservoirs Act 1975 - Section 10</p> <p>Shrubbery thinned to open view across lake</p> <p style="text-align: center;">All works completed</p>							

No.	Objectives	Target Date	Lead Staff	Outcomes against Green Flag Criteria	Resources	Progress To Date	Review Date
8.	Repeat survey of infrastructure (annual occurrence)	Mar 2008	George Bond	2,3,8	Staff time	Survey completed December 2007	Every Year
Footway resurfacing 946 sqm Playground seat bases& bins Fencing closeboard Café area landscaping				£28500 £4000 £8300 £25,000	All tarmac works scheduled to be completed by April 2008 Further works commissioned for Feb 2009 [Scheduled and completed May 2008] completed Dec 2007 works completed by April 2008		
9.	Continue regular audit and remedial works to tree stock	Jan 2008	Alex Campbell	2,3,5,8	Parks Revenue Budget	Completed	Every Year
Year 2 works							
<ul style="list-style-type: none"> • Appropriate pruning to private trees adjacent to Broad Walk entrance - completed • Fell declining oak tree near café to assist with refurbishment - completed • Thin out oak regeneration adjacent to path between Park View & Church Hill entrances – to be incorporated into Volunteer programme • Coronet pruning to dead trees in parkland completed • 							
10.	Erect signage at secondary entrances / introduce sustainable planting	Mar 2008	Tina Heather	1,7	Parks Gateway budget/ Parks Revenue	Completed	N/A

No.	Objectives	Target Date	Lead Staff	Outcomes against Green Flag Criteria	Resources	Progress To Date	Review Date
	and improve appearance of entrance				Budget		
<p><u>Church Hill Entrance:</u></p> <ul style="list-style-type: none"> • Inside gate: welcome sign including map. Installed 28/4/08 • Remove tree stumps north of gate. - • 3-4 sacks of daffodils planted either side of gate. <p style="text-align: right;">All works completed</p> <p><u>Branscombe Gardens Entrance:</u></p> <ul style="list-style-type: none"> • Old wooden gate and railing to be removed and replaced with new metal gate and railings. Scheduled for completion Feb 08 • Pathway – growth cleared 1m back and growth removed by fence to open up views and promote feeling of safety. • Bluebells planted • Duplicate planting plan outside Seaforth Gardens <p style="text-align: right;">All works completed</p>							

No.	Objectives	Target Date	Lead Staff	Outcomes against Green Flag Criteria	Resources	Progress To Date	Review Date
<p>Seaforth Gardens Entrance:</p> <ul style="list-style-type: none"> Edge of path leading to gate by Seaforth Gardens repaired. Duplicate planting plan on other side outside Seaforth Gardens <p>Pound Gate Path/Entrance Take foliage back 1m away from path.</p> <ul style="list-style-type: none"> Outside Entrance – planting scheme required <p>Inside Entrance – new tarmac required.year 2009 possibly April 2008</p> <p>Bourne Hill Entrance</p> <ul style="list-style-type: none"> Outside Area – needs new tarmac and disabled provision scheduled for completion April 2008 Welcome sign – unable to read, order larger adhesive diagram to be placed over existing. Community Boards needed for Friends/Police signage. Weeding needed. <p>Wynchgate Entrance/Elizabeth Drive Tarmac - needs repairing scheduled for completion April 2008</p> <ul style="list-style-type: none"> Gates repainted Gates – remove brown sign <p>Entrance at junction of Park View/Park Gate</p> <ul style="list-style-type: none"> Gate repaired <p>Remove tired shrubs and replant</p>							
						All works completed	
						All works completed	
						Tarmac'd April 2008	
						April 2008 applied	
						Completed May 2009	
						Completed	
						All works completed	
						All works completed	
11.	Renovate soccer pitches including soil decompaction, seeding, sanding and fertilising	Mar 2008	Trevor Richards	2,3	Parks Revenue Budget	Completed	Every Year
12.	Carry out flora and fauna survey	May 2008	Karen Chang	4,8	Hertfordshire and Middlesex Wildlife Trust	GLA survey conducted	Ongoing

No.	Objectives	Target Date	Lead Staff	Outcomes against Green Flag Criteria	Resources	Progress To Date	Review Date
					Friends		
13.	Complete Marketing Policy for Park	Sept 2007	Hakema Anderson	Staff time	Completed	Completed	Sept 09
14	Introduce improved recycling facilities to maintenance yard	Oct 2008	Trevor Richards	3,4	Parks revenue budget	Completed	N/A
15.	Carry out feasibility study into possible alternative use for two of the four tennis courts	Oct 2009	Tony Corrigan	6,8	Staff time	Completed	N/A
16.	Increase recreational or voluntary activity to Park	Jun 2009	Karen Chang	6,8	Staff time	Completed	Every Year

TEN YEAR ACTION PLAN GROVELANDS PARK
Medium Term Actions –[Year Three - Five 2009 - 2011]

No.	Objectives	Target Date	Lead Staff	Resources	Progress To Date	Review Date
1.	Continue regular audit and remedial works to tree stock	Jan 2010	Alex Campbell / Andy Robinson	Parks Revenue Budget	Part complete	Every Year
<p>Thinning regime in planted belts to be progressed during the winter. Apprentice staff encouraged to participate, under supervision. Ad hoc pruning works alongside properties will continue, however not able to adopt a maintenance cycle without adequate resources being available.</p> <p>Year 3/4 works 2009/10</p> <ul style="list-style-type: none"> Continue thinning out regenerated oaks in open areas - to be incorporated into Volunteer programme Completed <p>Year 4/5 2010/11 –</p> <ul style="list-style-type: none"> Adopt re-coppicing in woodland and undertake site works in woodland subject to support from Forestry Commission Maintenance cycle to trees adjacent to properties not possible without further resource however ad hoc works will continue Remove selected trees around lake that are obstructing view. Plant new trees in viable positions Remove trees established in the ha-ha obscuring the view directly towards the lake retaining trees which frame the view – Priory contacted and meeting arranged with hospital director in order to seek advise and approval for HLF. Work will then commence. <p>Works within the woodland ie coppicing and woodland renewal will be delayed until Forestry Commission support agreed A draft Management Plan has been prepared for submission to the Forestry Commission with focus on woodland but incorporating whole park. -</p>						
2.	Produce detailed Arboricultural Management Plan and investigate funding opportunities	April 2010	Alex Campbell / Andy Robinson		On target	
Grovelands Park woodland is one of seven parks maintained woodlands to be included in an application to the Forestry Commission's England						

No.	Objectives	Target Date	Lead Staff	Resources	Progress To Date	Review Date
Woodland scheme. Prior to taking this proposal forward £3.5k grant to be sought from Forestry Commission to work up management plans for all the sites. A gradual approach to opening up the historic views is necessary as financial resources are limited and any works will have to be integrated into the works programme undertaken by Parks Operational Arb Team. English Heritage strongly support the proposal to remove self-set trees established in the ha-ha fronting the house to open up and frame the view from the mansion across the lake to restore this key designed view.. Their support for the proposal will be brought to the attention of the Priory administrator. Work to progress the application to the Forestry Commission will continue in the long term actions						
3.	Increase biodiversity	Sept 2013	Biodiversity officer	Parks Revenue	On target	
To begin to produce biodiversity management plans for the park, based on resources available – Progressed in long term actions. Enfield Council are in the process of writing and implementing a Biodiversity Action Plan (BAP) for the borough and positive conservation management of the Borough's Sites of Importance for Nature Conservation (SINCs) will be a vital component of this. The council is currently investigating bringing its SINCs into Natural England's Higher Level Stewardship scheme and/ or the Forestry Commission's England Woodland Grant Scheme. The BAP and entry into grant schemes will ensure that there is a coordinated approach to biodiversity management both across the borough and within parks ensuring that maximum biodiversity benefits are achieved						
4.	To continue to bring avenue back to former glory	April 2010	Trevor Richards & Park Staff	Parks Gateway budget	Completed	April 2009
<ul style="list-style-type: none"> Soil improver applied for rhododendrons and reduce growth where necessary. Further rhododendrons (mixed colours) continue to be planted each year to ensure the process of bringing avenue back to its former glory. During 2011 the introduction of daffodils, snowdrops and bluebells was planted. 						
5.	Additional water points to be introduced	December 2009	Trevor Richards	Parks Revenue Fun	Completed	N/A
In order to ensure the sustainability of the new beds at the Broad Walk entrance and around the café, new water points have been installed .						
6.	Carry out recommendations to Reservoir	September 2011	Highways	Parks Capital	Completed	

No.	Objectives	Target Date	Lead Staff	Resources	Progress To Date	Review Date
	Spillway repairs cost in the region of £5k Increase in dam levels based upon a raise in levels to give a freeboard of 650mm Cost dependent on obtaining the correct software to carry out modelling, in the region of £70K for which the funding has been identified and agreed. Work will be carried out during 2012					
7.	Improve ecological status of lake	September 2013	Biordiversity Officer	Parks Revenue Budget	On target	
	Undertake / commission a survey of the lake to establish ecological and chemical quality and a feasibility study for improving its ecological status					
8	Lake to be cleared	May 2010 Feb 2011			Completed	
	Lake cleared in September and repeated in November 2009. Further clearance in February/April 2010/2011					
9.	Information signage around lake	April 2010	Karen Chang/ Tina Heather	Parks Revenue Budget	Completed	
10.	Stream to be cleared out of debris, tree deposits and leaf fall	March 2010	Trevor Richards	Parks Revenue Budget	Completed	
	Due to flooding within the woods Property services commissioned to inspect the stream. The pit at the end of the overflow stream from the lake cleared out, including stopping off the overflow from the lake and the adjacent drain runs inspected. These were found to be in working order. The loose debris was cleared from in and around the pit ensuring that it resumed normal working order. Grills not defective as they only provide protection to the end section of the overflow from the lake. The main lake discharges into the overflow stream and finishes at a concrete pit which collects the debris and rubbish and prevents these large items from entering the drains. The grills are a good distance "upstream" of where the houses are and should not contribute to flooding.					
11.	Overflow to lake cleared	February 2010	Trevor Richards	Parks Revenue Budget	Completed	
	The overflow gully to the lake on the golf course to be cleared of build up of leaves and self set suckers.					

No.	Objectives	Target Date	Lead Staff	Resources	Progress To Date	Review Date
12.	Repeat survey of infrastructure (annual occurrence)	March 2013	George Bond	Contractors Revenue and Capital budget	Annually	
Footway resurfacing £20,000, Fencing £10K.						
13.	Littler bin survey	May 2010	George Bond/Trevor Richards	Capital budget	Completed	
Grovelands park introduced the use of the Glasdon Jubilee litter bin which is produced using 100% recycled material. The design of this bin will help achieve improved grades for NI 195 as it has been designed with anti-littering, anti-graffiti, anti-flyposting and anti-staining benefits. The chamfered apertures and domed hood of the bin will help reduce littering and the cigarette stubber plate will help to reduce smoking related litter. These bins have been sited in high use areas eg main entrance and café. It is intended that covered bins will be purchased for future provision of replacement bins .						
14.	Recycle receptacles in park	Jan 2010	Trevor Richards	Parks Revenue	Complete	
Following a pilot scheme in 2009 to assess how much waste can be recycled in Grovelands Park, permanent receptacles have been positioned adjacent to the café area. This is a joint initiative with parks purchasing the containers and Waste Services collecting and recycling contents						
15	Introduce improved recycling facilities to maintenance yard	June 2010	Trevor Richards	Parks revenue budget	Completed	N/A
To build a second bay to enable one bay to accommodate green waste and the second bay to accommodate wood chippings.						
16.	Branscombe Gardens Entrance	April 2010	George Bond	Gateways	Completed	
Remove grass edging and build path/roadway to ensure complies with H & S.						
17	Cafe	Feb/April 2010	Trevor Richards	Parks Revenue Budget	Completed	As appropriate
For health and safety reasons window sills and side wall to the café have been jet washed as Pigeon droppings evident. Further pigeon spikes purchased and put up on eaves of café to reduce droppings						

No.	Objectives	Target Date	Lead Staff	Resources	Progress To Date	Review Date
18	To conduct a Bat walk	April 2011	Partnerships & Projects		Complete	
	Herts. & Middx Bats Group conducted an informative bat walk on 29/4/11 engaging with Volunteers and members of the Public					
19	Carry out feasibility study into possible alternative use for two of the four tennis courts	June 2010	Partnerships & Projects George Bond	Staff time	Completed	N/A
	Park survey to be conducted to ascertain park users view. Two courts to be resurfaced and re-lined to ensure the courts are of good quality and complies with Health and safety.					
20	Increase recreational or voluntary activity to Park	Jun 2011	Karen Chang	Staff time	On Target	Every Year
	There has been an increase in the amount of events and healthy walks that take place in the park during 2010					

TEN YEAR ACTION PLAN GROVELANDS PARK

Long Term Actions –[Year Six – Ten 2012 - 2016]

No.	Objectives	Target Date	Lead Staff	Resources	Progress To Date	Review Date
1.	Produce detailed arboricultural management plan and Investigate funding opportunities	April 2013	Andy Robinson		On target	
<p>A five year Arboricultural Plan was completed in Year 1. This has been repeated in year 6 and will inform this Management Plan. Grovelands Park woodland is one of seven parks maintained woodlands to be included in an application to the Forestry Commission's England Woodland scheme. Prior to taking this proposal forward £3.5k grant to be sought from Forestry Commission to work up management plans for all the sites. A gradual approach to opening up the historic views is necessary as financial resources are limited and any works will have to be integrated into the works programme undertaken by Parks Operational Arb Team. English Heritage strongly support the proposal to remove self-set trees established in the ha-ha fronting the house to open up and frame the view from the mansion across the lake to restore this key designed view.. Their support for the proposal will be has been brought to the attention of the Priory administrator. .</p>						
2.	Continue regular audit and remedial works to tree stock	Annually	Andy Robinson	Parks Revenue Budget	On Target	Every Year
<p>Works within the woodland ie coppicing and woodland renewal will be delayed until Forestry Commission support agreed It is proposed that the draft Management Plan be submitted to the Forestry Commission with focus on woodland and incorporating the whole park. – 2011/12</p> <ul style="list-style-type: none"> • Thinning regime in planted belts to be progressed during the winter. Apprentice staff encouraged to participate, under supervision. • Ad hoc pruning works alongside properties will continue, however not able to adopt a maintenance cycle without adequate resources being available. • Remove trees established in the ha-ha obscuring the view directly towards the lake retaining trees which frame the view –and meeting arranged with hospital director in order to seek advise and approval for HLF. Work will then commence. Priory contacted. • Continue progressive re-coppicing in woodland 						

No.	Objectives	Target Date	Lead Staff	Resources	Progress To Date	Review Date
	<ul style="list-style-type: none"> • Continue ad hoc works to trees along boundaries • Remove and replace declining Myrobalan plum avenue leading from Inverforth Gate • 'monolithing' (removal of branch system) of a number of dead/dying veteran trees in the parkland and adjacent to properties where breakage has occurred. • works around the lake targetting the removal of deadwood and high weight bearing branches overhanging pathways using a MEWP (mobile elevated work platform) to enable safe access into the trees. • Removal of a small number of trees by the lake (north eastern edge) in connection with the Reservoir Act - to construct a relief overflow channel. 					
3.	Increase biodiversity	Dec 2013	Biodiversity officer	Parks Revenue	On target	
<p>Enfield Council have produced a Biodiversity Action Plan (BAP) for the borough and positive conservation management of the Borough's Sites of Importance for Nature Conservation (SINCs) will be a vital component of this. The council is currently investigating bringing its SINCs into Natural England's Higher Level Stewardship scheme and/ or the Forestry Commission's England Woodland Grant Scheme. The BAP and entry into grant schemes will ensure that there is a coordinated approach to biodiversity management both across the borough and within parks ensuring that maximum biodiversity benefits are achieved. As the Biodiversity Action Plan has recently been adopted it has allowed the appointment of a dedicated Biodiversity Officer to be recruited during the early part of 2012 to take forward the following:</p>						
3.1	To produce and oversee the implementation of a Parks Management Plan including management under the Higher Level Stewardship and the England Woodland Grant Scheme.	Dec 2013	Biodiversity officer	Parks Revenue	On target	
3.2	To write and implement ecological management plan	Dec 2013	Biodiversity officer	Parks Revenue	Commence mid 2012	

No.	Objectives	Target Date	Lead Staff	Resources	Progress To Date	Review Date
3.3	To monitor and review the Biodiversity Action Plan and produce the Species and Habitat Plan	Dec 2013	Biodiversity officer	Parks Revenue	Commence mid 2012	
3.4	To identify projects and seek external funding, and partnership working for biodiversity projects	Dec 2013	Biodiversity officer All Council departments	External funding	Commence mid 2012	
	<ul style="list-style-type: none"> • Develop ongoing list of projects that might be suitable for funding e.g through SITA, Heritage Lottery Fund, Access to Nature, EU Life Fund etc and a list of suitable grants • To advise Third Sector Organisations on external funding opportunities and, where appropriate, provide assistance in completing applications 					
3.5	To develop relationships and effective engagement with existing Friends of Grovelands Park and similar bodies	May 2012	Biodiversity officer	Parks Revenue	Commence mid 2012	
3.6	To facilitate access to Nature through encouraging voluntary , community and educational activities which take people to natural places	Dec 2012	Friends Groups/ Partnerships & Projects officer	Parks Revenue	Commence mid 2012	

No.	Objectives	Target Date	Lead Staff	Resources	Progress To Date	Review Date
3.7	Managing volunteers with an interest in becoming involved in the ongoing management and development of nature conservation sites. To assist these groups to work effectively for the benefit of these sites	Dec 2013	Biodiversity officer Friends Groups/ Partnerships & Projects officer	Parks Revenue	Commence mid 2012	
3.8	To support educational activities that encourage students to understand and access nature	Dec 2012	Friends Groups/ Partnerships & Projects officer	Parks Revenue	Commence mid 2012	
3.9	To facilitate the collation of ecological records by encouraging Friends Groups and volunteers to gather data.	Dec 2013	Biodiversity officer Friends Groups/ Partnerships & Projects officer	Parks Revenue	Commence mid 2012	
4.	Review use of maintenance machinery to ensure compliance with Health and safety and with view to	Summer 2012	Doug Shipwright	Parks Capital	On Target	See year

No.	Objectives	Target Date	Lead Staff	Resources	Progress To Date	Review Date
	introducing "green" equipment					
5.	To continue to bring avenue back to former glory	February 2012	Trevor Richards & Park Staff	Parks Gateway budget	Completed	Annually
<ul style="list-style-type: none"> Soil improver applied for rhododendrons and reduce growth where necessary. Further rhododendrons (mixed colours) continue to be planted each year to ensure the process of bringing avenue back to its former glory. 						
7.	Carry out recommendations to Reservoir	March 2012	Highways	Parks Capital	Completed	
<p>The external Arboricultural contractors Gristwood & Toms have carried out works around the lake targetting the removal of deadwood and high weight bearing branches overhanging footways using a MEWP (mobile elevated work platform) to enable safe access into the trees. Prior to the commencement of the reservoir works removal of a small number of trees by the lake (north eastern edge) will be undertaken. The following works will be carried out under the supervision of Dr Andy Hughes, who is a highly qualified Dam Engineer appointed to the Environment Agency's All Reservoir Panel. Appointments to this panel are approved by the Secretary of State and require extensive experience in the field of dam construction and refurbishment. Discussions to ensure that the works are not over-designed have taken place and ways in which to minimise the scale and impact of these works, and in particular to demonstrate the impact the works will have on areas downstream of the reservoirs. The works construction of an auxiliary spillway and raising of the existing wall along the embankment crest from 0.2 to 0.45m commenced in January 2012 with an estimated duration of 8 weeks with completion of works by end March 2012. These works are to safely accommodate extreme flood flows without water flowing over the embankment in a manner that could lead to catastrophic erosion and failure of the dams the spill capacity of each reservoir is to be increased</p> <p>Initial costing of £180,000 (including 10% contingency) has been revised with the estimated cost from Cannon Water (Reservoir Specialist Contractor recommended by A Hughes £110,000 (all subject to confirmation)</p> <p>£30,000 - LB Enfield Design/Site Supervision fees</p> <p>£20,000 - Panel Engineer fees</p>						

No.	Objectives	Target Date	Lead Staff	Resources	Progress To Date	Review Date
The increase in estimated costs is largely down to the increased scope of works at Grovelands Park including a new 150 metre long 'flood wall'.						
8..	Improve ecological status of lake	September 2013	Biordiversity Officer	Parks Revenue Budget	On target	
Undertake / commission a survey of the lake to establish ecological and chemical quality and a feasibility study for improving its ecological status						
9.	Lake to be cleared	March 2012	Trevor Richards	Parks Revenue Budget	Completed	
Lake cleared in February.2012.						
10	Stream to be cleared out of debris, tree deposits and leaf fall	March 2012	Trevor Richards	Parks Revenue Budget	Completed	
10.1	Repair Bridges	April 2013	Groundforce	Parks Revenue Budget	On target	
11.	Overflow to lake cleared	February 2012	Trevor Richards	Parks Revenue Budget	On target	
The overflow gully to the lake on the golf course to be cleared of build up of leaves and self set suckers.						
12.	Repeat survey of infrastructure (annual occurrence)	March 2012	George Bond	Contractors Revenue and Capital budget	Annually	
Footway resurfacing £20,000, Fencing £10K.						
13.	Recycle receptacles in park	Jan 2012	Trevor Richards	Parks Revenue	Complete	
Following a pilot scheme in 2009 to assess how much waste can be recycled in Grovelands Park, permanent receptacles have been positioned adjacent to the café area. This is a joint initiative with parks purchasing the containers and Waste Services collecting and recycling contents						

No.	Objectives	Target Date	Lead Staff	Resources	Progress To Date	Review Date
14	Introduce improved recycling facilities to maintenance yard	June 2012	Trevor Richards	Parks revenue budget	Completed	N/A
To build a second bay to enable one bay to accommodate green waste and the second bay to accommodate wood chippings.						
15	Complete Marketing Strategy for Park	June 2013	Bluestone	Parks revenue budget	On target	
<p>There is a large amount of competition from other parks and open spaces in and around London therefore it is very important that the right companies and organisations know what Enfield has to offer. In order to promote these parks and to reach potential clients the following actions need to be undertaken;-</p> <ul style="list-style-type: none"> • Create a database of potential clients • Create a media pack for potential clients • Operate a clear and cost effective pricing structure • Update the website with the new information • Create and implement a marketing strategy • Social networking groups set up to demonstrate popularity and offer a direct marketing tool to promote events • Introduce an environmental impact fee • Introduce a grounds maintenance fee 						
There has been an increase in the amount of events and healthy walks that take place in the park during 2011						
	Centenary Event	April 2013	Friend of Park	Various	On target	
16	Cafe	Feb/April 2012	Trevor Richards	Parks Revenue Budget	Completed	As appropriate
For health and safety reasons window sills and side wall to the café have been jet washed as Pigeon droppings evident. Further pigeon spikes purchased and put up on eaves of café to reduce droppings						

APPENDIX 1: Judges Feedback 2012 with comments

**Grovelands Park
London Borough of Enfield Green Flag Award 2012/2013**

Bandscores	Desk Assessment	0-9	10-14	15-19	20-24	25-30			
	Field Assessment	20-29	30-39	40-44	45-49	50-54	55-59	60-64	65-70
	Overall score	30-44	45-54	55-59	60-65	66-69	70-74	75-79	80+

Status – Pass Overall band score 66 - 69 Desk Assessment Feedback Band score 15-19

Criteria	Strengths	Recommendations	Comments
Presentation		Needs clear authorship. Statement of political buy-in would be desirable.	Identified as produced by Enfield Council Park Operations and Parks Business Unit.
Health, Safety & Security	Well presented.		
Maintenance of equipment, buildings & landscape			
Litter, cleanliness, vandalism	Standards clear.		

Environmental Sustainability		Although the plan states pesticide use is being reduced, this is not quantified in the plan.	The herbicide use varies according to the growth encountered during the growing season however the approach is to minimise its use.
Conservation of heritage & nature			
Community Involvement			
Marketing Strategy		Plan on website different from one submitted for Green Flag.	This has now been updated on the website
Overall management		Action plan does not clearly set out actions for the future, concentrating on 2012.	The action plan has been updated to reflect the future vision for the park. The new management structure that was put in place in 2012 includes several new staff. Although these staff are fully integrated, this has an impact planning for the future and it is an aim that all the green flag parks will have a fully updated action plan for 2014.
Additional comments The plan appears to be an extension of a plan that expired in 2011. While it now purports to be a 10 year plan the actions set out concentrate mainly on 2012. The current plan serves to list the achievements of the past but does not give an adequate focus on the future.			The first five years of the Plan has focused on the infrastructure of the Park, ensuring that this has been brought up to a good standard, having secured capital and revenue funding in order to do so. The Management Plan over the next five years will focus

	<p>on the softer elements with sustainability and biodiversity being the main drive. Severe cuts in public spending and prioritisation of key services to address the economic decline may prove challenging and will require innovative ways to supplement government funding. The Parks department will work in partnership with the Friends of Grovelands Park and other voluntary groups to identify projects and seek external funding for biodiversity projects whilst implement the developing Ecological and Biodiversity Action Plans</p>
--	--

Field Assessment Feedback

Band score 50-54

Criteria	Strengths	Recommendations	LBE Comments
A Welcoming Place	<p>Very attractive gateway at Inverforth gate. Parking for disabled at gateway is well designed well and sign posted.</p>	<p>Most of the cars parked at this gate were not disabled badge holders... How is this policed?</p>	<p>Parks Police and traffic enforcement officers made aware of this issue</p>
Healthy, Safe and Secure	<p>New lake overflow design very good and effective. (Hopefully safe enough for young children with cobbles and being so open)?</p>	<p>Maybe a finger post sign required at end of lane to guide public / deliveries to yard / café?</p>	<p>Added to action plan, pending funds.</p>
Clean and Well Maintained	<p>Good to hear new updated bins going in after capital investment.</p>	<p>No need for café by golf area to pin signs on trees advertising drinks etc as</p>	<p>Golf area advised of this issue.</p>

		plenty of signs on café / score hut itself. Low fence around lake could do with painting.	
Sustainability			
Conservation and Heritage	Informative boards around lake.	Couldn't see any angling bins to make sure lines and hooks are disposed of appropriately.	Litter around lake to be monitored and bins added if a need is identified.
Community Involvement	Very good active friends of group. Great woodland play area incorporated into woods	It's a shame the Bowls club are not more inclusive and advertised more for the local community. It seems to be a closed shop!!	Bowls clubs across the borough are being encouraged to be inclusive to promote participation in the sport which appears to be declining.
Marketing		Green flag certificate on café door out of date.	Green Flag certificate updated.
Management			
Additional Comments			

APPENDIX 2 - Policy and strategic context

The overall Vision for Grovelands Park and all open space is:

By 2020 Enfield will be successful in:

- Making open spaces in Enfield places for everyone
- Delivering high quality open spaces in partnership
- Creating sustainable open spaces for the future
- Protecting and managing the exceptional quality and diversity of Enfield's open spaces

The key objectives are to:

- Provide a park which is welcoming to visitors.
- Ensure that the Park is healthy, secure and safe to use.
- Create a green space which is clean and well-maintained.
- Ensure that the Park and its buildings are managed sustainably.
- Ensure that the Park and its buildings are well conserved and to interpret its history and heritage through good signage, publicity and literature.
- Increase links with the local community and the Friends group through the planning and management of the Park.
- Restore and maintain the woodland, grassland and wetland habitats.
- Monitor, review and manage effectively the infrastructure.

The Council places high value on the importance of its parks and open spaces and they are central to many of the Council's overall Aims and Objectives.

The Council's Aims and Objectives

There are a number of Council strategies and plans that are directly relevant to the Grovelands Park objectives and the achievement of Green Flag status. These documents, also available on the council website, are in many cases very detailed and as such for the purposes of this document have been summarised by selecting the appropriate sections and paragraphs and presenting them here.

Enfield Council Strategy

The Council Strategy was approved by Cabinet on 24th November 2010, and approved by full Council early in early 2011. The new Council Strategy sets out:

The Vision

To make Enfield a better place to live and work, delivering fairness for all, growth and sustainability and strong communities.

Underpinning this commitment there are a number of priorities, the delivery of which will contribute to improving the quality of life for all residents in the borough.

Aims and Priorities

Aim 1. Fairness for all

Priorities: Serve the whole borough fairly and tackle inequality
 Provide high quality, affordable and accessible services for all
 Enable young people to achieve their potential

Aim 2. Growth and sustainability

Priorities A clean, green and sustainable environment
Bring growth, jobs and opportunity to the borough

Aim 3. Strong communities

Priorities: Encourage active citizenship
Listen to the needs of local people and be open and accountable
Provide strong leadership to champion the needs of Enfield
Work in partnership with others to ensure Enfield is a safe and healthy place to live

Of the 3 key aims for 2010- 2014 Parks & Open Spaces fall mainly within Aim 2, Growth and Sustainability, 2a - A clean, green and sustainable environment. In particular 2.7 highlights Improved and accessible parks, open spaces, allotments and waterways. To deliver this strategic aim and priority a key action is to Implement the Parks & Open Spaces Strategy which states that quality will be assessed using the Green Flag standards, unless otherwise stated. A clean and safe living environment is consistently rated by our residents as one of their top priorities and the many parks and open spaces are one of our biggest attractions. By ensuring we all live sustainably we will be able to safeguard what is special about the borough, protecting it for future generations.

The Council Strategy also details the new corporate values that will define the approach to achieving these priorities and ensure that as an organisation Enfield Council can meet the challenges ahead.

Values

One Team – Working together across teams, departments and partners to deliver the best possible services for Enfield’s residents.

Customer First – Treating the community, colleagues and partners with fairness and respect, listening and responding to their needs and designing our services around the people we serve.

Achieving Excellence – Consistently striving to deliver standards of excellence through ambition, creativity, innovation, pride in our achievements and a 'can-do' attitude to new challenges.

Empowering People – Enabling our staff and the local community to make informed choices and giving our staff the skills, knowledge and confidence to improve services, take personal responsibility, accept risk and reward success.

Enfield’s Future (A Sustainable Community Strategy for Enfield 2009 - 2019)

This document is the “top level” strategy in the hierarchy of local plans and sets the strategic direction for all key public services in the borough. It was developed by the Enfield Strategic Partnership [ESP], a multi-agency partnership bringing together key agencies from Enfield’s public, private and voluntary sectors. This ten-year strategy was launched in November 2007 and revised in 2009, following extensive consultation with partners and members of the public. The ambition is that Enfield has ‘a healthy, prosperous, cohesive community living in a borough that is safe, clean and green’.

The aim of the Partnership is to ensure that everyone involved in promoting the social, economic and environmental well being of Enfield is able to work together in a coordinated way to improve the quality of life in the borough and deliver the vision. To turn to vision into reality the ESP have established eight Thematic Action Groups [TAG’s] with each focussing on a specific theme and vision. The Environment and

Leisure & Culture Themes focus on the community priority of “A cleaner, greener and more vibrant borough”.

Shaping Enfield’s Future - Place Shaping Strategy has been developed in response to the changing challenges facing the borough. It reflects the determination of the Council and its partners to build on strengths and achievements, and address the needs of some key parts of the borough and the communities who live in them. The strategy is designed to better enable the delivery of targets and priorities that have already been set out in the sustainable community strategy, Enfield’s Future, and in the Local Area Agreement. It will increase focus on achieving their implementation and act as a major driver for change within the borough.

The Local Development Framework (LDF) – Core Strategy

The LDF is a detailed suite of statutory policies and guidance which are owned by the Local Strategic Partnership and other stakeholders. The LDF provides a spatial expression to the framework of strategic plans and, of these, the Sustainable Community Strategy is the top level policy in the hierarchy of plans. The key policy document is the “Core Strategy”, adopted in November 2010 which provides the long term spatial vision, policies and implementation programme for delivery and provides the context for more detailed strategies for areas of change. The emerging Development Management Document will provide detailed policies to inform decisions on planning applications.

Specifically, the Core Strategy [policy 34] seeks to protect and enhance existing open spaces and seek opportunities to improve the provision of good quality and accessible open space in the Borough. Grovelands Park falls within Protection of the Metropolitan Open Land policy which is one of the core policies in the Core Strategy.

Sites of Importance for Nature Conservation Grading are categorised by Metropolitan, Borough and Local. Definition of the gradings are detailed at the end of this section under the Biodiversity Action Plan

Enriching Enfield (Cultural Strategy)

The Enfield Leisure & Cultural Partnership finalised this ten-year strategy in 2006. It identifies Enfield Council’s vision to have “a thriving community of everyone who lives, works or studies in Enfield,” and outlines the Council’s plan for meeting the leisure and cultural needs of the Borough’s residents. The strategy proposes that ‘leisure and culture’ should be expanded to include a wide variety of activities, amenities, and values, including:

- Sports activities, events, facilities and development;
- Children’s play and playgrounds;
- Parks, open spaces, wildlife habitats, allotments and gardening, nature conservation, and the countryside.

Everybody Active, Enfield Sport, Physical Activity and Physical Education Strategy, 2009 To 2014

Adopted in 2010, **Everybody Active**: at school, in the workplace and in the community is about making sport and physical activity an important and valued part of everyday life. It is a five year sport, physical activity and physical education strategy for Enfield that sets out our strategic vision and aims for 2009-2014 and identifies priority actions to be resourced and delivered through public, private and

third (community and voluntary) sector organisations working together. It builds on the progress made as a result of the previous 'Enfield Sport and Physical Activity Strategy 2005-2008' and identifies new opportunities, including those presented by London 2012

The vision for sport and physical activity in Enfield strategic priorities and aims are:

- Everyone participating in physical activity, everyday
- Educating and inspiring young people to be active
- Providing diverse, exciting and inclusive sport and physical activity opportunities and facilities
- Community led sport and physical activity
- Growing sport and physical activity through 2012
- Creating pathways to success

Parks and Open Spaces Strategy 2010 - 2020

The Parks & Open Spaces Strategy sets out a shared vision for the network of open spaces across the Borough and aims to ensure they deliver their potential for cross-cutting place shaping benefits. The strategy was commissioned in August 2008, with full consultation being undertaken between December 2009 and March 2010 and was formally adopted in April 2010. It has been developed through an extensive assessment of the quantity, quality and accessibility of all open spaces in the Borough, a sports assessment and residents survey. The Strategy will:

1. Sit below the Place Shaping Agenda as a delivery tool for parks and open spaces;
2. Make open spaces in Enfield places for everyone;
3. Deliver high quality open spaces in partnership;
4. Create sustainable open spaces for the future;
5. Protect and manage the exceptional quality and diversity of Enfield's open spaces;
6. Provide a 10-year Delivery Plan and 3-year Rolling Action Plan to ensure the objectives of the Strategy, including addressing the needs of the place shaping areas, are delivered;
7. Investigate current funding options and arrangements (including s106 and the proposed Community Infrastructure Levy)
8. Prioritise capital and maintenance expenditure consistent with the Strategic vision.

Below the vision sits 17 objectives which have been designed to address the priorities and ambition of the Council and its partners. [This Strategy now replaces the previous lapsed strategy Fresh Fields: A Strategy for Parks and Open Spaces]

Future projects will be aligned in respect of the objectives and areas of deficiency. The delivery plan will be subjected to scrutiny periodically to determine whether the objectives are being achieved. Objectives will also be aligned to the departments Service Centre Plan.

Service Centre Plan

The Service Centre Plan for "Parks and Open Spaces 2010- 2011" has as its vision:

“To make Enfield one of the best places to live, work, study and do business.”

The Service Plan will sit along side the Parks & Open Space Strategy, 10 year delivery plan and 3 year rolling action plan to ensure that the objectives of the Strategy, including addressing the needs of the place shaping areas, are delivered

Of particular relevance are the following:

- Delivery of the enhanced and extensive capital programme
- Clarification of the type and style of play equipment wanted by children,
- Commitment to the delivery of the £2.5M pathfinders play scheme
- Priority to investigating external funding streams to supplement government funding
- Acknowledgment that there are now 20 Friends of the Park Groups signed up to an agreement.
- The capital improvements to the public conveniences, disabled access and playground at Grovelands Park have been completed in addition to a new Pathfinders site.

In April 2008 the Parks department moved from being part of Environment, Street Scene & Parks into the newly formed Place Shaping and Enterprise division. In November 2010, in response to the changing needs of the Council, the Parks department merged with Waste Services and transferred back into the Environment Directorate. A combined Service Plan will be produced early in 2012 to define the streamlined structure and future objectives to take the service forward.

C19 Access and Quality Indicator

The Council is committed to the C19 Access and Quality Indicator that forms part of the Comprehensive Performance Assessment (CPA) for local government.

This sets an indicative lower threshold limit of 30% of the population being within 20 minutes of a range of 3 different sports facility types of which one has achieved a quality assured standard. Enfield wishes to increase the number of facilities that have achieved a quality assured status.

To this end, it has identified Grovelands Park as a suitable open space to achieve this status through gaining and maintaining a Green Flag award in order to meet the needs of the West of the borough.

Enfield Open Space and Sports Assessment

The Council has completed a **PPG17 open space and sports assessment. The study provided a qualitative and quantitative audit and analysis** of the supply of and demand for open space, indoor and outdoor sports provision in the borough.

The report also includes the results of a resident's survey on parks and open spaces. 1,000 residents were interviewed in a telephone survey. Findings from the study include responses relating to the perceived need for improvements, including:

- Improved safety (22%)
- Less litter (13%)
- Improved maintenance and attractiveness (13%).

The study revealed that Grovelands Park was multi-functional and potentially could offer space for nature and/or environmental studies. It concluded that Grovelands Park scored an 'above average' in the quality and value of a park. The parks' 6 items of play equipment met the Locally Equipped Areas for Play criteria and more recently has had elements of natural play built into the landscape as part of the Play Pathfinder programme

APPENDIX 3

GROVELANDS PARK ARBORICULTURAL MANAGEMENT PLAN FOR 2012 – 2016

Introduction

Purpose of the plan

The production of an arboricultural management plan for Grovelands Park has been undertaken to:

- Provide an assessment and evaluation of the tree features in the park
- Set-out the aims and objectives for these features
- Set out management prescriptions to achieve the aims and objectives should resources become available

Scope

The management plan extends to all the tree features, including, avenues, veteran trees and woodland.

This plan includes prescriptions that run until 2016, it will be reviewed in 2016.

History

Grovelands Park was originally mainly wooded with much of the Grovelands estate consisting, in the 16th century of standard oak, and coppice wood. The main products were firewood, charcoal and oak bark used for tanning. Mr Walker Gray purchased the 230 acres of land in 1796 and in 1798 built the existing Grovelands House to a design by John Nash, who had the grounds landscaped by Humphrey Repton. The house is now Grade 11 listed. After the death of Walker Gray in 1834 the house and grounds were acquired by a relative J D Taylor of Taylor Walker Brewery in 1838. At this time there was a herd of 50-60 red deer on the estate prevented from getting near the house by the construction of a ha-ha (ditch), which is still visible on the park boundary between the house and park.

J D Taylor died in 1885 by which time he had increased the size of the estate to 600 acres (243 ha). However following the death of his son in 1902 much of the estate was sold off. With the development of the railway and the bus terminus at nearby Southgate Green the surrounding area became more urbanised.

After considerable public opposition Southgate Urban District Council bought 64 acres (26 ha.) of the estate in 1911 for the sum of £22,893 opening as Grovelands Park in 1913. Further purchases increased the size of park to 91 acres (37 ha.).

The house became a temporary hospital for wounded soldiers in 1916. In 1921 it became a convalescent hospital closing in 1977. The house reopened in 1986 and today functions as a private psychiatric hospital.

Landscape

The park is largely enclosed by urban development, and is an important open space. It has an extensive visual impact on the urban environment due to the mature wooded skyline, which is visible from many vantage points beyond the borders of the park.

The present park comprise 38 hectares, of which 6 hectares is woodland, and 3 hectares is water in the form of a large serpentine lake fed naturally by two springs. The remainder (29 hectares) is parkland. A stream traverses the park east west and the land rises on either side of this stream. The parks facilities include a 9 hole golf course, a bowling green and pavilion, a children's play area and facilities for football.

Habitats

Grovelands Park supports a number of important habitats and species, broadleaved woodland, parkland with trees (remnants of wood pasture), veteran trees, standing water, a stream and species rich semi-improved grassland.

Woodland

The woodland sites are classified in the main as semi-natural woodland. The main body of woodland is confined to the south and east boundaries, with a small area on the western boundary. These areas of woodland are remnants of the Winchmore Hill woods, which extended more widely across what is now a densely populated area. The predominant oak in the area is sessile oak and the woodland derives from oak/hornbeam woodland. The woodland, which is concentrated along the south/east boundary of the park is variable in appearance, age range and content and can be divided into 3 distinct compartments:

Compartment 1 extends from the park entrance off Broad Walk to the western boundary of the park. This compartment is largely linear in shape with a small block of woodland extending southward at the western end. This compartment contains a good number of mature oaks with beech and hornbeam also represented in the canopy. There is significant regeneration of young oaks and birch on the edge of the woodland. There is also a group of dead oaks, which appear to have suffered oak dieback and decline in an area where drainage is poor.

Compartment 2 extends from the entrance path off Broad Walk eastwards to the rear of Seaforth Gardens and is roughly rectangular in shape and slopes down and extends beyond the stream which runs through the park. By the entrance path there are a number of pines/spruces amongst an under storey of rhododendrons. There is evidence that these trees are the

remnants of a plantation apparently dating from the mid 19th century. The area immediately adjacent to the properties in Broad Walk suffered extensive storm damage in 1987. Clearance and the subsequent recovery has resulted in dense thickets of vegetation consisting of widespread bramble growth and the succession of birch, hornbeam, sycamore, oak and other pioneer species. Lower down the slope a sub-compartment largely consists of mature oak with occasional dead/dying trees and a dense storey of holly. Towards the bottom of the slope coppiced hornbeam prevails with oak standards. There is a distinct lack of ground vegetation in this part of the woodland and the soil is shallow, compacted and gravelly with a limited amount of leaf litter. Hawthorns as well as a wild service tree are recorded. Dead trees and others in decline are scattered throughout this section of woodland.

Compartment 3 is the eastern section of the woodland and stands on gently sloping land extending from compartment 2 to the boundary with Church Hill. Immediately adjacent to Church Hill the canopy consists of sycamore, ash, oak and hornbeam. There is good development in the under storey including ash, elder, hawthorn, hornbeam and holly. Further west beyond the footpath to Branscombe Gardens the character of the woodland is generally the same. But there is a decline in ground vegetation beneath a plot of coppiced hornbeam, which is an extension of the coppiced area on the lower slope in the middle compartment 2 of the woodland.

Parkland with veteran trees

The most historical feature and significant characteristic of the park away from the woodland is the number of large ancient sessile oaks, which stand as individuals or in groups. Many of these trees show, signs of decline, and/or have suffered damage in the past. A small number of dead trees have been “coronet pruned” and retained to provide standing deadwood habitat. These trees are supplemented by avenues, informal groups of trees and individuals ranging from mature trees to newer plantings of various species in strategic areas within the park, providing significant visual impact, enveloping the open character of the central portion of the park.

Other trees:

There are three avenues bordering footpaths within the park.

Near the entrance from Bourne Hill (Inverforth Gate) there is an avenue of the purple form of Myrobalan plum (*Prunus cerasifera* “Nigra”). A number of gaps within the avenue are evident and the trees are not uniform in age indicating the partial replacement of losses in the past.

A mature avenue of trees of mixed species stands on the north-west ridge behind Park View. The species include horse chestnut, Norway maple and beech.

To commemorate past mayors of Southgate a mature avenue of red oaks was planted along the central footpath leading from the north eastern bank of the lake in a north westerly direction.

Three significant belts of trees have been planted in the past 30 years and are now well established. The new belts of trees stand (I) in the north west corner of the park to the rear of Queen Elizabeth's Drive adjacent to Grovelands House, (II) to the rear of Park View to the east and north of the bowling green, and (III) immediately to the south of the bowling green adjacent to woodland compartment 3.

Around much of the lake there is varying mature tree cover, comprising in the main alders and willows. Two swamp cypresses are established on the southern bank, but these are not fully appreciated as specimen trees as they are surrounded by other mature trees. On the eastern bank extensive shrub cover has been planted to compensate for the loss of trees following reinstatement works to stabilise banks of the lake to comply with the requirements of The Reservoirs Acts. The lake is a very important landscape element within the park. The visual appreciation of the lake particularly from the land sloping down from the mansion is devalued by the amount of established trees on the banks of the lake.

- In the grassland areas away from the intensively maintained amenity grass, grass is cut annually in order to encourage the development of species rich grassland sward. Self seeded trees (sessile oaks) have established in the vicinity of mature "mother" trees.

Management History

Historic management

There are no records available detailing historic woodland management. Although it is evident from the outgrown coppice stools that coppicing was undertaken in the past.

Following the public ownership of the park the mature avenues that define a proportion of the footpaths within the park were planted over a period of years.

Recent Management since 1987

Woodland

Management within the woodland compartments has been confined to pruning/felling trees along the boundaries to meet complaints from the public in relation to shade and overhang, and for health and safety purposes. Grovelands Park is within an area of the borough where shrinkable clay soils prevail, and in exceptional cases following detailed investigations, it has been necessary to remove the trees in close proximity to properties to reduce costs incurred relating to subsidence claims against the Council.

The 1987 storms caused the loss of many trees in a section of compartment 2. Trees were subsequently cleared. The storm opened up the

woodland canopy and a diverse woodland structure has developed in this compartment with significant benefits for wildlife.

A play feature was constructed in 2008/09 in compartment 2 to encourage natural play. Appropriate pruning works were undertaken to trees in the vicinity of the play area to reduce potential hazards to users of the facility.

A number of field maples were planted at the western end of compartment 3 following losses as a result of the 1987 storm.

Veteran trees

Veteran trees in the parkland have been “Coronet” pruned, this has provided deadwood habitat. Where veteran trees have suffered lightening/wind damage they have been pruning to extend their lives.

Avenue plantings

Where losses have occurred in the avenues replacement planting has taken place

Other tree planting

Within the remainder of the park additional planting has taken place in groups and individual specimens, many sponsored by the public. In addition three significant belts of trees have been planted

A belt of willows has been planted on wet ground on the east facing slope to the east and north of the bowling green. These trees extend a group of mature trees to the east and of the avenue along the footpath to the rear of Park View.

To the west of the avenue behind Queen Elizabeth’s Drive belts of trees have been planted, including a number of pines extending a group of mature pines and oaks in the vicinity of declining veteran sessile oaks. The planted trees in this belt are supplemented by natural oak regeneration.

To the south of the bowling green adjacent to compartment 3 a maturing belt of trees is planted including ash, hornbeam and field maple. The hornbeam element within this belt has suffered squirrel damage.

Oak regeneration

Self seeded trees in the meadows adjacent to mature ‘mother’ trees have been thinned.

Objectives /Proposals

The overall aim and objective is:

‘To ensure that the trees and woodlands within Grovelands Park are maintained and enhanced for their visual amenity and biodiversity value, both now and in the future’.

5 key features have been identified:

- I. Woodland
- II. Veteran trees
- III. Avenues
- IV. New planting features
- V. Lakeside views

Woodland

The overall objective for woodland management is to maintain and improve the quality and appearance of the woodlands by ensuring continuity and encouraging structural diversity (at present the woodland has a dense canopy layer with little or no vegetation below). The development of different layers within the woodland will be encouraged by opening up the canopy to create glades and increase the light at the woodland floor. This approach will encourage the development of a varied age structure and a mixed population of trees, as well as encouraging natural regeneration of native species and a greater diversity of wildlife habitats.

Compartment 1

Objective 1: To thin competing trees, allowing more light to reach the lower layers, to improve access.

Action: Thin out regenerating trees selecting trees with better form to grow into maturity. Fell dead trees and coronet prune declining trees to reduce the risk of breakage/falling and retain standing timber as a wildlife habitat.

Objective 2: Reduce the risk of branch breakage/falling trees

Action: Fell dead trees and coronet prune declining trees and retaining standing timber as a wildlife habitat.

Compartment 2

Objective 1: Encourage regeneration and oak succession.

Action: To maximise the potential to assist regeneration remove selected oaks and all holly within a block about 50 metres by 50 metres in size. Retain better oaks within the block as a seed source. Fence off the block to create a reserve and discourage entry by the public for an initial period of 8-10 years. Introduce composted material to the site to ameliorate the compacted nature of the ground to assist successful regeneration.

Objective 2: Control the spread of holly to open up the ground layer, relieve competition and encourage structural diversity.

Action: Thin holly.

Objective 3: Reintroduce the traditional practice of coppicing to outgrown hornbeam coppice in the secondary layer.

Action: Adopt a coppicing cycle cutting trial areas of hornbeam coppice at intervals to assess growth response.

Objective 4: Thin competing trees along the southern edge of the boundary, and improve access.

Action: Thin out regenerating trees selecting trees with better form to grow to maturity. To encourage a diverse and long woodland edge.

Compartment 3

Objective 1: Relieve competition amongst established tree cover

Action: Thin out regenerating and maturing trees selecting trees of better form for growing onto maturity to improve access to this compartment.

Veteran trees

Veteran trees are the most significant and historical landscape feature within the parkland.

Objective 1: To sustain and ensure the continuity of sessile oaks as a component of the parkland

Action: Thin out naturally regenerating sessile oaks within the vicinity of 'mother' trees selecting specimens of better form for growing onto maturity. Formative prune trees to remove side branches and promote single stems.

Objective 2: To extend the safe life where appropriate, and the viability of dead/dying veteran trees within the park.

Action: Continue coronet pruning where trees are dying, or in decline. Prune live trees to reduce the risk of branch failure as a result of end loading on weight bearing branches.

Avenues

These important features make a marked contribution to the landscape within the park defining a proportion of the footpaths and in part enveloping the central open character of the park. The myrobalan plum avenue lining the footpath from the Inverforth Gate entrance is in decline and there are gaps evident. The ornamental character leaf coloration and relatively small size of these trees generally jar and are at odds with the historical landscape.

Objective 1: Replace the declining myrobalan plum avenue

Action: Remove and replace this avenue with a species more in scale with the park and in keeping with the historical/indigenous trees which characterise the park e.g. plant beech or small leaved lime.

New planting features

The three significant belts of trees are now approaching maturity. In addition individual specimens/memorial trees are planted throughout the park

Objective 1: Thin out regenerating trees within the belts of trees to relieve competition and improve flow of light to the ground to enhance field layer.

Action: Fell selected trees retaining those trees of better form to grow into maturity.

Objective 2: Rationalise the new planting in the park to avoid conflict with important views in the historical landscape.

Action: Carefully position new tree planting away from the more historical elements of the park in the western part of the park utilising strategic positions in the vicinity of the bowls green/MUGA site where there is a relative absence of trees.

Lakeside views

Trees, principally alders and willows in a variable condition densely clothe the banks of the lake obstructing views across the water. Trees which add interest to the lakeside treescape, such as swamp cypress are established on both north and south banks. But these specimens have limited visual impact, as appreciation of their visual quality is devalued by the surrounding mature trees. There are areas within the barrier which extends around the lake that are free of planting. Self set trees are established in the ha-ha ditch within the boundary of Grovelands House. These trees are outside the control of the Parks department. In addition there are trees on the slope down toward the lake, which partially obscure the view from the grounds of the house across the slope towards the lake.

Objective 1: Open up the views from Grovelands House across the slope and lake to the southern bank and increase appreciation of more desirable species around the lake.

Action 1: Remove trees in a poor condition, which are liable to fall into the lake.

Action 2: Remove selected groups of trees in positions around the lake where positive advantage can be gained in improving views across the lake particularly adjacent to the land sloping down from Grovelands House on the northern side of the lake and the café to the south.

Action 3: Fell individuals/groups of trees around the lake to enhance visual appreciation of the swamp cypresses.

Action 4: Plant new trees to improve visual interest adjacent to water eg *Amelanchier* sps. *Betula nigra*, *Alnus glutinosa* "Imperialis" in areas free of planting where this does process does not impede the planned improvements to open up views across the lake.

Action 5: Remove trees established in the ha-ha (nb approval will be required from the management of the hospital/English Heritage), and trees within

the park on the slope obscuring views across the lake, retaining trees which frame the view.

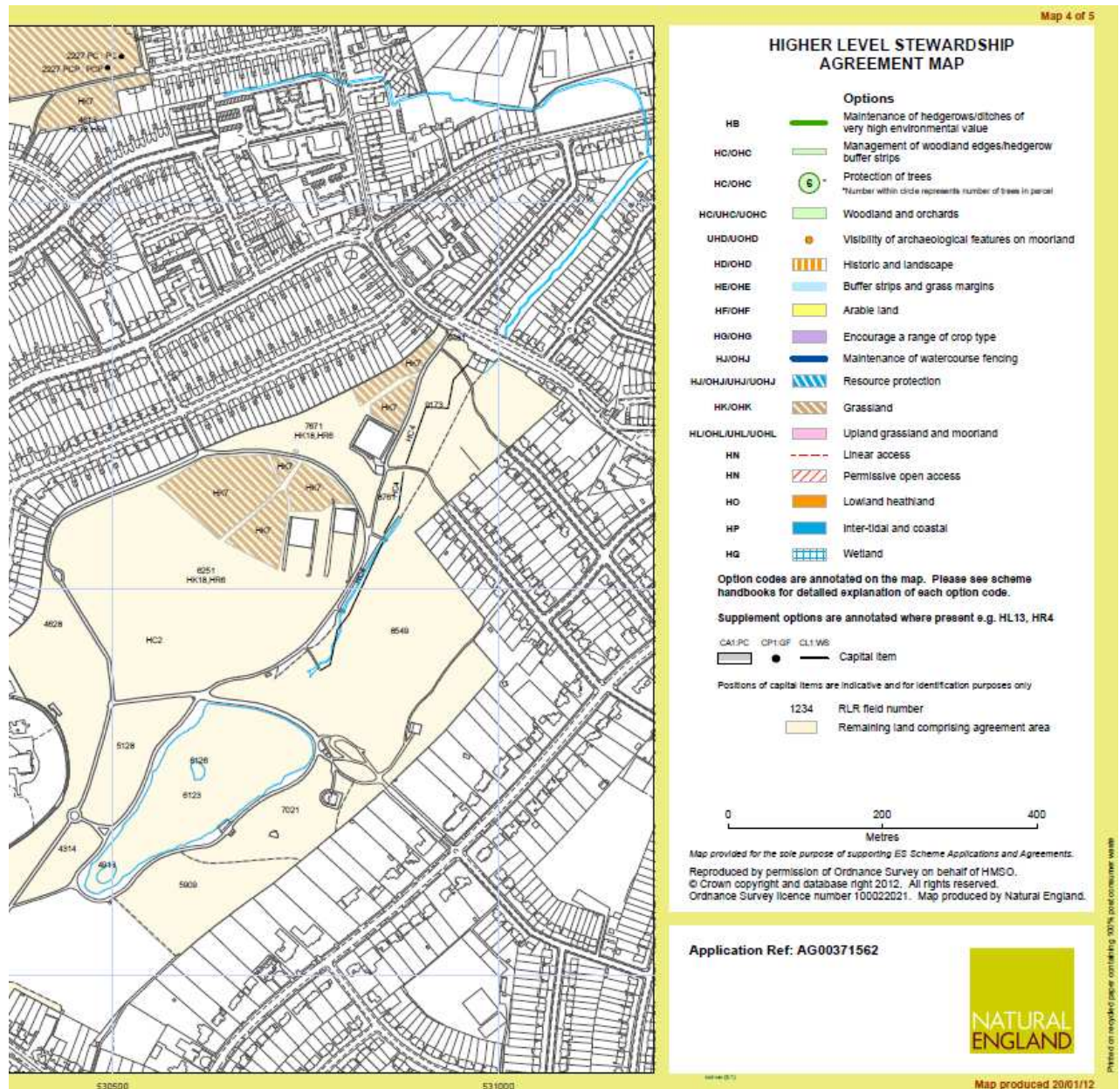
Implementation

The existing resources allocated to arboricultural management within the park are insufficient to take forward the objectives outlined in this arboricultural management plan. At present priority is given to dealing with trees identified as dangerous. Initial thinning works have also been undertaken to newer plantings by Parks Operational staff and volunteer groups under the supervision of the Parks Partnerships & Projects team. Sponsored tree planting by public subscription is undertaken by the Parks Operational staff. Other than scheduling attention to trees in close proximity to properties as a result of complaints from the public no planned management is undertaken.

The council is currently investigating bringing its woodlands and grasslands (including veteran trees) into management through either Natural England's Higher Level Stewardship scheme and or the Forestry Commission's England Woodland Grant Scheme. Should the Council decide to progress with these schemes it is anticipated that components of this management plan will be funded through these schemes. A works programme based on this management plan will be produced after this has been decided.

APPENDIX 4

HIGHER LEVEL STEWARDSHIP Grovelands



OPTIONS YEARS 1 – 10

These options are to be undertaken in conjunction with HLS agreement maps

[HC2] Protection of in-field trees on grassland

Aim/Information: To protect historic/ landscape significance of trees providing habitats for invertebrates and birds. Trees must have trunk diameter of over 30cm at breast height and trunk must be entirely within the field. Trees that die and/or fall during the course of agreement must remain in position and prescriptions continue to be followed.

Indicators of success: 5 trees in field (TQ 30946251) will be protected

Management prescriptions:

- Do not carry out cultivations, storage of machinery or weed control (unless spot treatment) under canopy of tree and the area extending 2m beyond edge of canopy

- Leave fallen timber in situ
- Do not spread lime or fertilisers beneath tree canopy or beyond 2m of canopy
- The area under canopy may be mown in order to manage grassland provided that:
 - Branches are not damaged or do not need to be removed/cut back for access
 - Fertiliser not spread below canopy
 - Fallen timber below canopy not removed to allow mowing

[HC4] Management of Woodland Edges

Aim: Develop scrub along edge of woodland, providing important habitats for range of wildlife; invertebrates, birds, small mammals, etc.

Indicators of success:

- 1/3 of woodland edge failed annually
- Mosaic of tall herbs and scrubs maintained
- Scrub cover not exceeding 50% of area

Management Prescriptions:

- Allow woodland edge to grow out for up to 6m
- Do not apply fertilisers
- Only apply herbicides for invasives (under certain methods – see agreement)
- Trim no more than 1/3 of shrubby growth in any one calendar year
- Do not cut during bird breeding season (1 March – 31 August)

[HK7] Restoration of lowland meadow (BAP habitat) - *species-rich, semi-natural grassland*

Aim: Restore grasslands which are potentially rich in plants and assoc. animal life that have suffered from management neglect. Can involve introducing seeds and creation of gaps for their establishment. Requires changes to timing of cutting/grazing and control of dominant species.

Indicators of success:

- By year 5, at least 4 high-value indicator species: *Common Birds Foot Trefoil*, *Devils Bit Scabious*, *Lady's Bedstraw*, *lichens*, *Mouse eared hawkweed*, *Pignut* should be frequent and 2 occasional in the sward
- By year 5, cover of wildflowers should be between 20-90% (40% flowering May-June)
- By year 2, cover of invasive trees/shrubs less than 10%

Management Prescriptions:

- From year 2 manage sward by cutting to achieve height of 2-10cm in Oct/Nov
- Must cut **and remove** grass after 15 July
- Cut and remove field dried hay after 15 July
- No application of fertilisers
- Control undesirables *Common nettle*, *Common Ragwort*, *Creeping Thistle*, etc
- Do not top more than 30% of total grassland, leave minimum of 10% longer grass
- Field operations must not damage soil structure (take particular care when waterlogged)
- Manage extensively within 200m of GCN breeding pond, retain existing hibernation sites
- Retain all standing and fallen dead wood
- Protect archaeological and historic features by avoiding ground disturbance

[HK18] Supplement for haymaking

Aim: Off-set difficulty of haymaking which would otherwise result in valued meadow land being grazed and not cut, benefit integrity of historic landscape and continue tradition.

Indicators of success:

- Same as HK7

Management Prescriptions:

- Cut and remove field-dried hay each year
- Do not cut or top before 1 July and not before 15 July one year in 5

- Field operations must not damage soil structure (take particular care when waterlogged)

NO CAPITAL WORKS