



Jewellery

Thursday 7th May 2015

Fellows

Established 1876

Jewellery

Thursday 7th May 2015 at 10.00am

Fellows

Established 1876

Index

| | |
|-----------|-----------|
| Jewellery | 1-717 |
| No lots | 718-1000 |
| Borro | 1001-1016 |

Viewing Times

| | |
|-------------------|------------------|
| Saturday 2nd May | 11.00am - 4.00pm |
| Tuesday 5th May | 10.00am - 4.00pm |
| Wednesday 6th May | 10.00am - 4.00pm |
| Thursday 7th May | 8.30am - 10.00am |

Please be aware that you will be asked for photographic proof of identification to be allowed access to the viewing area.

Featured Lots

Lots 499 and 598
(Front cover)



Lot 69
(Back cover)



We also hold sales of...

Antique & Modern
Jewellery



Vintage Jewellery
& Accessories



Why Buy?

- COMPETITIVE** buyer's premium
- LIVE** online bidding
- FULLY** illustrated catalogue
- EASY** to use, functional website
- ACCURATE** condition reports
- SPECIALISTS** on hand to offer advice
- TRACKED AND INSURED** shipping*

*Please contact Fellows for further information.

Why Sell?

- HIGH PRICES** consistently achieved
- FLEXIBLE** commission rates
- FREE** valuations with no obligation to consign
- RAPID** turnaround for your goods
- TARGETED** advertising to a global audience
- SUPERIOR** quality catalogues
- FULLY** integrated website



Contact the Jewellery Department...

Ben Randall
Specialist
0121 212 2131
ben@fellows.co.uk

Emma Mogridge
BA (Hons) FGA, DGA
Cataloguer
0121 212 2131
emmam@fellows.co.uk

Leah England
BA (Hons)
Senior Specialist
0121 212 6308
leah@fellows.co.uk

Follow Us On...



facebook.com/fellowsauctions



@fellowsauctions

Further Information



Additional Images and Condition Reports can be found online at our website www.fellows.co.uk



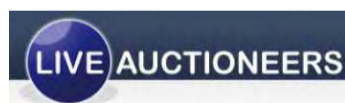
Telephone Bidding is available if you cannot attend an auction. Please ring 0121 212 2131 to arrange a phone line.



Live Bidding via the internet is available at www.the-saleroom.com/fellows



Download our catalogue app today and view our printed catalogues on your device.



Buyer's Premium

The buyer's premium is 20% (+ VAT) or 24% (VAT inclusive) on the first £50,000 of any individual lot. For any individual lot in excess of £50,000, the buyer's premium is 10% (plus VAT) or 12% (VAT inclusive). Lots prefixed with * will carry VAT at 20% on the hammer price.

Live Online Bidding Charges

Buyers will pay a commission charge of an additional 3% (+ VAT) of the hammer price if lots are successfully purchased online via Live Auctioneers and the-saleroom.com.

Seller's Commission

Sellers will pay a commission charge of 12.5% (+ VAT) on items which have a hammer price over £3,001 or more. Items sold for £3,000 or under will have a commission rate of 15% (+ VAT).

Important Notice

Neither Fellows nor the Vendors are responsible for any reference as to the condition of lots listed. The absence of such reference does not imply that a lot is in good condition or free from faults or imperfections. All weights and dimensions are approximate. Purchasers are advised to carefully inspect lots and make their own opinion as to the condition. Please see section 7 under 'Bidders'.

Key to Symbols



Item may have export restrictions for customers outside of the EU.



Lot comes with box.



Certified Lots

1 ✕

An early 20th century 18ct gold ruby and diamond ring. The twin single and old-cut diamonds, with circular-shape ruby and similarly-cut diamond sides, to the scrolling gallery and plain band. *Estimated total diamond weight 0.15ct. Weight 2.7gms. £150-200*



5



A citrine and diamond pendant. The circular-shape citrine collet, within a single-cut diamond border and marquise-shape citrine ray surround, to the 9ct gold rope-twist chain. *Chain with hallmarks for Sheffield. Length of pendant 2.2cms. Length of chain 44cms. Total weight 4.3gms. £50-80*

2

An 18ct gold diamond single-stone pendant. The brilliant-cut diamond, within a collet mount, suspended from a belcher-link chain with spring ring clasp. *Estimated diamond weight 0.20ct, I-J colour, SI clarity. Import marks for London, 1997. Length 40cms. Weight 3gms. £300-400*



3

A mid 20th century gold diamond five-stone ring. The graduated old-cut diamond collets, to the plain band. *Estimated total diamond weight 0.90ct, H-J colour, SI1-P1 clarity. Weight 2.2gms. £200-300*



6

An 18ct gold sapphire and diamond cluster ring. The oval-shape sapphire, within a brilliant-cut diamond surround. *Estimated total diamond weight 0.40ct. Hallmarks for London, 1983. Weight 2.2gms. £200-300*



4

A 9ct gold aquamarine and diamond floral ring. Designed as a single-cut diamond, within a pear-shape aquamarine petal surround. *Hallmarks for Birmingham. Weight 3.1gms. £60-90*



7

A mid 20th century platinum and 18ct gold diamond cluster ring. The single-cut diamond scalloped cluster, with single-cut diamond sides, to the tapered band. *Estimated total diamond weight 0.15ct. Weight 2.6gms. £100-150*



8 ✕

An 18ct gold ruby and diamond floral cluster ring. The circular-shape ruby, within an alternating circular-shape ruby and single-cut diamond surround. *Estimated total diamond weight 0.15ct. Hallmarks for London, 1973. Weight 3.3gms. £70-100*



9



A pair of 18ct gold diamond and gem-set ear pendants. Each designed as a pear-shape blue topaz drop, suspended from a brilliant-cut diamond, garnet and blue topaz scrolling foliate bar, to the triangular-shape peridot surmount. *Hallmarks for Edinburgh. Length 3.1cms. Weight 3.5gms. £60-90*

10

An Edwardian 18ct gold demantoid garnet and diamond ring. The graduated circular-shape demantoid garnet and replacement emerald line, with single-cut diamond spacers, to the grooved surround and band. *Hallmarks for Birmingham, 1903. Weight 2.3gms. £50-80*



11

An Edwardian 18ct gold sapphire and diamond ring. The oval and circular-shape sapphires, with diamond point double spacers, to the scrolling sides. *Hallmarks for Birmingham, 1908. Weight 3.2gms. £100-150*



12

An 18ct gold tsavorite garnet and diamond pendant. The triangular-shape green tsavorite garnet, suspended from a triangular-shape diamond surmount and integral flattened curb-link chain. *Estimated diamond weight 0.20ct, H-I colour, VS2-SI1 clarity. Hallmarks for Sheffield, 2008. Length of pendant 1.5cms. Length of chain 46cms. Weight 4.4gms. £120-180*



13

An 18ct gold opal ring. The ovoid opal cabochon collet, to the beaded sides and tapered half-band. *Hallmarks for London, 2007. Weight 4gms. £90-140*



14

A sapphire and diamond triple cluster ring. The three slightly graduated sapphires, each within a single-cut diamond shared surround. *Estimated total diamond weight 0.35ct. Weight 4.3gms. £150-200*



15

An early 20th century gold diamond bar brooch. Of openwork design, the whiplash scrolling foliate lines, set with old-cut diamonds throughout. *Estimated total diamond weight 0.30ct. Austrian marks to clasp. Length 4.1cms. Weight 3.8gms. £80-120*



16

A mid 20th century gold, diamond and enamel Royal Artillery brooch. The bi-colour cannon, with rose-cut diamond wheel and blue enamel scrolling ribbon motto sides, to the plain bar. *Length 5.1cms. Weight 4.3gms. £80-120*



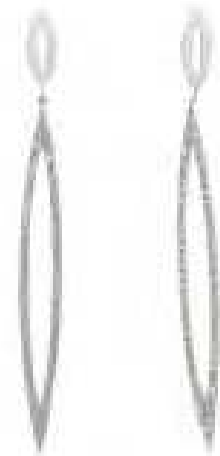
17

An 18ct gold citrine and diamond cluster ring. The circular-shape citrine, within a brilliant-cut diamond surround. *Estimated total diamond weight 0.95ct. Hallmarks for Birmingham. Weight 3.6gms. £150-200*



22

A pair of paste ear pendants. Each designed as a circular-shape colourless paste marquise-shape drop, suspended from a marquise-shape surmount. *One paste deficient. Length 7cms. Weight 6gms. £120-180*



18

A mid 20th century 18ct gold and platinum diamond three-stone ring. The three slightly graduated old-cut diamonds, to the bi-colour gallery and plain band. *Estimated total diamond weight 0.30ct. Weight 1.8gms. £60-90*



23

A diamond cluster ring. The brilliant-cut diamond hexagonal-shape cluster, to the tapered shoulders. *Estimated total diamond weight 1.85cts. Hallmarks for Birmingham, 2007. Weight 15.8gms. £500-700*



19

An 18ct gold diamond three-stone ring. The slightly graduated old-cut diamonds, to the asymmetric shoulders and plain band. *Estimated total diamond weight 0.65ct, I-J colour, SI2-P1 clarity. Weight 2.8gms. £280-380*



24

A diamond single-stone ring. The rectangular-shape diamond, to the similarly-shaped diamond channel sides. *Principal diamond estimated weight 2cts, I-J colour, P2 clarity. Weight 4.9gms. £540-740*



20

An early 20th century gold diamond six-stone ring. The old-cut diamond line, to the scrolling shoulders and grooved band. *Estimated total diamond weight 0.25ct. Weight 1.7gms. £60-90*



25

A 14ct gold diamond dolphin pendant. Designed as a dolphin, with brilliant-cut diamond eye, jumping through a hoop. *Hallmarks for London, 2014. Length 2.8cms. Weight 8.1gms. £100-150*



21



A diamond bracelet. The brilliant-cut diamond line, with bar spacers, to the partially concealed clasp. *Estimated total diamond weight 4.50cts. 17.8cms. Weight 14gms. £460-660*

26

A fracture-filled diamond single-stone ring. The brilliant-cut fracture-filled diamond, to the similarly-cut diamond line shoulders and plain band. *Estimated principal diamond weight 0.60ct. Weight 2.9gms. £320-420*



30



A diamond dress ring. The four brilliant-cut diamonds, with brilliant-cut diamond double spacers, to the similarly designed openwork band. *Signed R Svart. Estimated total diamond weight 0.50ct. Weight 7gms. £150-200*

27



An early 20th century sapphire and diamond bar brooch. Comprising three graduated circular-shape sapphire collets, within a scalloped surround, to the single-cut diamond tapered bar. *Estimated total diamond weight 0.15ct. Length 6.5cms. Weight 6gms. £150-200*

28 ✕

A selection of three 9ct gold gem-set rings. To include a brilliant-cut diamond cluster ring, an emerald and diamond foliate cluster ring, together with a ruby and diamond dress ring. *Estimated total diamond weight 0.25ct. Hallmarks and import marks for 9ct gold. Weight 7.3gms. £80-120*



31 ✕

A selection of three 9ct gold gem-set rings. To include an early 20th century split-pearl and red-gem ring, an opal and emerald five-stone ring together with a sapphire and diamond dress ring. *Hallmarks for 9ct gold, some partially indistinct. Weight 8.2gms. £80-120*



29



An early 20th century gold diamond single-stone ring. The old-cut diamond, within an openwork gallery, to the engraved sides and plain band. *Estimated diamond weight 1.50cts, tinted colour, SI2-P1 colour. Weight 6.1gms. £1,200-1,800*

32



A pair of cultured pearl ear studs. Each measuring approximately 11.2mms. *Weight 5.3gms. £60-90*

33

An 18ct gold diamond three-stone ring. The graduated brilliant-cut diamonds, to the plain band. *Estimated total diamond weight 0.35ct, I-J colour, SI-P1 clarity. Hallmarks for Birmingham, 1994. Weight 3.3gms. £120-180*



34



A late 19th century 9ct gold hinged bangle. Designed as a vari-texture woven panel, to the openwork half-bangle. *Inner diameter 5.7cms. Weight 10.4gms. £100-150*

38



A cultured pearl and diamond crossover ring. The spiral grooved band, with vari-hue cultured pearl and brilliant-cut diamond asymmetric terminals. *Weight 3.7gms. Ring size O. £70-100*

39



A platinum diamond single-stone ring. The brilliant-cut diamond, to the tapered shoulders and plain band. *Estimated diamond weight 0.50ct, I-J colour, SI1-SI2 clarity. Hallmarks for London, 2005. Weight 5.5gms. £340-440*

35

An 18ct gold diamond single-stone ring. The brilliant-cut diamond, to the tapered band. *Diamond weight 0.50ct, stamped to band, estimated J-K colour, SI2-P1 clarity. Import marks for London. Weight 1.9gms. £300-400*



40

A selection of three diamond rings. To include two early 20th century 18ct gold and platinum single-cut diamond rings, together with an 18ct gold brilliant-cut diamond single-stone ring. *Estimated total diamond weight 0.25ct. One with hallmarks for Birmingham, 1971. Total weight 7.9gms. £150-200*



36

A sapphire and diamond three-stone ring. The oval-shape sapphire, between brilliant-cut diamond sides, to the tapered band. *Estimated total diamond weight 0.50ct, I-J colour, SI clarity. Weight 3.2gms. £240-340*



41



A 9ct gold vari-shade sapphire and diamond bracelet. The square-shape green, blue, purple, pink, orange and yellow sapphires, with brilliant-cut diamond sides, to the push-piece clasp. *Estimated total diamond weight 1ct. Hallmarks for Birmingham. Length 19cms. Weight 21.7gms. £380-480*

37

A selection of four gem-set pendants. To include an oval sapphire cabochon and single-cut diamond cluster pendant, a 9ct gold amethyst cross pendant, a 9ct gold synthetic spinel pendant, together with a 9ct gold synthetic opal and diamond pendant. *Three with hallmarks for 9ct gold. Lengths 1.5 to 3.1cms. Total weight 7.6gms. £50-80*



42



A 9ct gold diamond line bracelet. Designed as a series of single-cut diamonds, each within an illusion setting, to curved spacers. *Estimated total diamond weight 1ct. Hallmarks for Sheffield. Length 18.5cms. Weight 6.3gms. £60-90*

43

A diamond cluster pendant. The pavé-set diamond marquise-shape cluster, within a tapered baguette-cut diamond surround, suspended from a similarly-set diamond surmount and curb-link chain. *Total diamond weight 0.50ct. Length of pendant 2.8cms. Length of chain 45.8cms. Weight 2.4gms. £80-120*



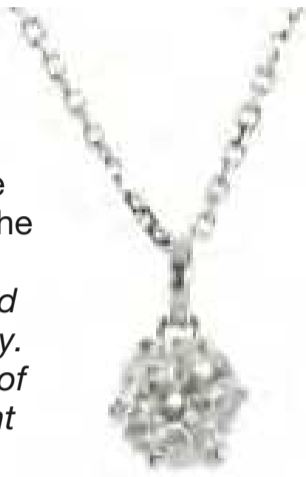
48

An emerald and diamond pendant. Of openwork design, the circular-shape emerald, suspended from an oval-shape emerald within a brilliant-cut diamond scalloped surround, to the similarly-cut diamond line sides and trace-link chain. *Estimated total diamond weight 0.55ct. Chain with Italian marks. Length of pendant 3.7cms. Length of chain 40cms. Total weight 3.4gms. £500-700*



44

An 18ct gold diamond single-stone pendant. The old-cut diamond to the plain surmount, suspended from a trace-link chain. *Estimated diamond weight 0.80ct, J-K colour, P1 clarity. Hallmarks for Birmingham. Length of pendant 1.2cms. Length of chain 44cms. Weight 3gms. £300-400*



45

A diamond single-stone ring. The brilliant-cut diamond, with diamond-accent claws, to the brilliant and baguette-cut diamond shoulders. *Principal diamond estimated weight 3.50cts, I-J colour, P2-P3 clarity. Weight 8.1gms. £1,500-2,000*



49

A 9ct gold emerald and diamond bracelet. Designed as a series of oval-shape emeralds with single-cut diamond sides, to the openwork spacers. *Hallmarks for Birmingham. Length 18.3cms. Weight 6.3gms. £80-120*



46

A tanzanite and diamond dress ring. The oval-shape tanzanite, between single-cut diamond line asymmetric sides, to the tapered band. *Estimated total diamond weight 0.10ct. Weight 3.3gms. £70-100*



50

A diamond five-stone ring. The graduated old-cut diamond line, inset to the tapered band. *Estimated total diamond weight 0.60ct, I-J colour, SI1-P2 clarity. Weight 6.5gms. £200-300*



47

A 9ct gold sapphire and diamond crescent brooch. The alternating circular-shape sapphire and brilliant-cut diamond line, with bead accents. *Hallmarks for Birmingham, 1989. Length 2.7cms. Weight 3.1gms. £50-80*



51

A sapphire cluster ring. The circular-shape sapphire stepped cluster, with radiating bar accents, to the plain band. *Weight 6.7gms. £120-180*



52



An 18ct gold diamond single-stone ring. The square-shape diamond, to the tapered shoulders and plain band. *Estimated diamond weight 0.30ct, I-J colour, VS clarity. Hallmarks for London, 2014. Weight 2.5gms. £120-180*

56



Two 9ct gold gem-set brooches. To include an early 20th century garnet collet bar brooch, together with an amethyst brooch with scrolling surround. *One with hallmarks for Birmingham, 1992. Lengths 5.1 and 4cms. Total weight 9gms. £70-100*

57



An early 20th century 9ct gold longuard chain. The faceted belcher-link chain, with lobster clasp. *Length 170cms. Weight 48gms. £500-700*

53



A 9ct gold diamond line bracelet. Comprising a series of circular-shape links, each with central single-cut diamond detail, to the push clasp. *Estimated total diamond weight 0.50ct. Hallmarks for Sheffield. Length 19cms. Weight 5.6gms. £60-90*

58



An early 20th century 15ct gold and platinum diamond bar brooch. The graduated old-cut diamond collet five-stone line, to the tapered bar sides. *Estimated total diamond weight 0.30ct. Length 5.2cms. Weight 3.2gms. £80-120*

54

A multi-gem brooch. Of openwork design, the oval-shape blue sapphire, within a circular-shape multi-gem surround, to include vari-shade sapphire and zircon, to the similarly-set scrolling border. *Diameter 4cms. Asian marks. Weight 13.2gms. £260-360*



59

An 18ct gold diamond single-stone diamond ring. The old-cut diamond, within a geometric mount, to the tapered band. *Estimated diamond weight 0.80ct, J-K colour, P3 clarity. Hallmarks for Birmingham, 2011. Weight 12gms. £340-440*



55



An early 20th century 9ct gold opal bar brooch. The oval opal cabochon collet, to the plain bar. *Length 5cms. Weight 2.8gms. £50-80*

60

A pair of 18ct gold diamond three-stone ear pendants. Each designed as a brilliant-cut diamond line, with plain spacers. *Total diamond weight 1ct, stamped to mount, estimated H-J colour P1-P3 clarity. Hallmarks for Birmingham. Length 1.5cms. Weight 1.6gms. £90-140*



61

A platinum diamond single-stone ring. The brilliant-cut diamond, to the tapered band. *Estimated diamond weight 0.75ct, J-K colour, SI clarity. Hallmarks for Birmingham, 2001. Weight 4.6gms. £440-640*

**66**

A selection of three gem-set rings. To include a 9ct gold diamond cluster ring, a 9ct gold cubic zirconia three-stone ring, together with a diamond geometric ring. *Estimated total diamond weight 1.75cts. Two with hallmarks for 9ct gold. Total weight 12.5gms. £180-260*

**62**

A pair of 9ct gold emerald and diamond ear studs. Of marquis-shape outline, the circular-shape emerald cluster, within a single-cut diamond surround. *Hallmarks for Birmingham. Length 1.3cms. Weight 2.2gms. £60-80*

67

An 18ct gold cubic zirconia cross pendant. The circular-shape colourless cubic zirconia cross pendant, to the heart-shape outline openwork gallery. *Hallmarks for Sheffield. Length 2.8cms. Weight 8.3gms. £200-300*

63

An early 20th century 22ct gold band ring. *Hallmarks for Birmingham, 1923. Weight 5gms. £120-180*

68

A chrysoberyl cat's-eye and sapphire three-stone bar brooch. The oval chrysoberyl cat's-eye cabochon, with circular-shape pink sapphire sides, to the plain band. *Length 4.1cms. Weight 8.7gms. £90-140*

64

A 9ct gold diamond dress ring. Designed as two graduated brilliant-cut diamond lines, to the similarly-cut diamond channel sides, and tapered band. *Estimated total diamond weight 3cts, H-J colour, P1 clarity. Hallmarks for Birmingham. Weight 9.1gms. £300-400*

**69**

An 18ct gold diamond pendant. The pavé-set diamond and polished scrolling panel disc, suspended from a belcher-link line, to the graduated similarly-designed surmount and belcher-link chain. *Estimated total diamond weight 0.30ct. Hallmarks for Sheffield, 2010. Length of pendant 4.1cms. Length of chain 44cms. Weight 6.7gms. £200-300*

65

A 9ct gold emerald and diamond ring. Of marquis-shape outline, the circular-shape emerald cluster, within a single-cut diamond surround. *Hallmarks for Birmingham. Weight 2.8gms. £60-90*



70



A 9ct gold enamel Royal Artillery cypher brooch. Of bi-colour design, the 'RE' monogram and red enamel crown surmount, within the blue enamel and motto scrolling ribbon sides. *Maker's marks for Garrard & Co Ltd. Hallmarks for Birmingham, 1979. Length 2.6cms. Weight 5.2gms. £80-120*

74



An 18ct gold tanzanite and diamond dress ring. The pear-shape tanzanite, with triangular-shape diamond sides, to the brilliant-cut diamond chevron. *Estimated total diamond weight 1.25cts, principal diamonds estimated I-J colour, VS2-SI1 clarity. Hallmarks for Birmingham, 2005 and 2009. Weight 9gms. £900-1,400*

75



An 18ct gold diamond single-stone ring. The brilliant-cut diamond within an illusion setting, to the tapered band. *Diamond weight 1ct, stamped to band, estimated L-M colour, P2 clarity. Hallmarks for Sheffield. Weight 4.3gms. £460-660*

71



A diamond single-stone ring. The old-cut diamond, to the fancy-band with openwork shoulder detail. *Estimated diamond weight 0.50ct, H-I colour, P1 clarity. Weight 5gms. £150-200*

76



An 18ct gold diamond half-circle eternity ring. The brilliant-cut diamond line, with scalloped edge. *Estimated total diamond weight 0.25ct. Hallmarks for Sheffield, 1992. Weight 2.7gms. £80-120*

72



An 18ct gold diamond single-stone ring. The brilliant-cut diamond, to the tapered band. *Estimated diamond weight 0.80ct, J-K colour, SI2-P1 clarity. Hallmarks for Birmingham. Weight 2.1gms. £700-900*

77



A sapphire and diamond dress ring. The oval-shape sapphire, within a brilliant-cut diamond lozenge-shape surround, to the brilliant-cut diamond openwork shoulders and tapered band. *Estimated total diamond weight 0.25ct. Weight 3.6gms. £70-100*

73



A mid 20th century diamond three-stone ring. The three slightly graduated brilliant-cut diamonds, to the tapered shoulders and plain band. *Estimated total diamond weight 1ct, I-J colour, SI1-P1 clarity. Weight 3.2gms. £400-600*



A diamond line bracelet. Designed as a series of brilliant-cut diamonds, to the bar sides. *Estimated total diamond weight 2.75cts. Length 18.3cms. Weight 14.7gms. £500-700*

79

A platinum diamond single-stone ring. The rectangular-shape diamond, to the bifurcated shoulders and tapered band. *Estimated diamond weight 0.60ct, K-L colour, VS clarity. Hallmarks for London, 2011. Weight 5.1gms. £240-340*



83

A mid 20th century 18ct gold diamond single-stone ring. The circular-cut diamond, to the single-cut diamond line shoulders and plain band. *One diamond deficient. Principal diamond estimated weight 0.65ct, H-I colour, P1 clarity. Weight 2gms. £240-340*



80

A mid 20th century 18ct gold and platinum diamond single-stone ring. The old-cut diamond, within a square-shape surround, to the bi-colour textured shoulders and plain band. *Estimated diamond weight 0.35ct, H-I colour, P2-P3 clarity. Weight 3.1gms. £120-180*



84

A pair of 18ct gold cultured pearl and diamond ear pendants. Each designed as a ridged column with cultured pearl and brilliant-cut diamond rondelle terminal, with oval-shape surmount. *One back fitting deficient. Import marks for London, 1997. Length 3.3cms. Weight 5.5gms. £150-200*



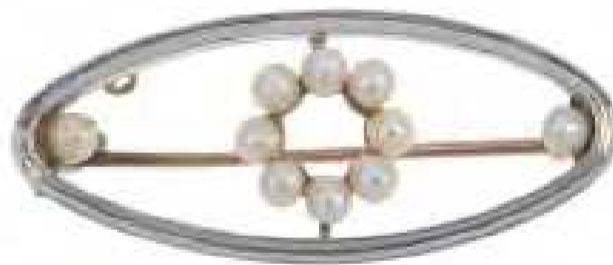
81

An early 20th century gold and platinum diamond bar brooch. The circular-cut diamond collet, within a geometric surround, to the plain bar. *Length 5cms. Weight 2.7gms. £50-80*



85

A cultured pearl brooch. Of openwork design, the cultured pearl circle, to the oval surround with similarly-set cultured pearl accents. *Length 3.2cms. Weight 3.3gms. £40-60*



82

A platinum cultured pearl accent lariat. The fancy-link chain, with cultured pearl and fringe terminal. *Hallmarks for Sheffield, 2000. Length 49.8cms. Weight 2.7gms. £50-80*



86

A diamond bracelet. Designed as an alternating series of brilliant-cut diamond and polished lines, with two-bar spacers, to the partially concealed clasp. *Estimated total diamond weight 0.60ct. Length 16.9cms. Weight 11gms. £280-380*



***87**



A pair of tanzanite and diamond cluster earrings. Each designed as a cushion-shape tanzanite, within a brilliant-cut diamond surround. *Total diamond weight 0.51ct, stamped to mount. Length 1cm. Weight 3.7gms. £800-1,200*

91



A sapphire and diamond ring. Of marquise-shape outline, the kite-shape sapphire line, to the brilliant-cut diamond scalloped sides and tapered band. *Estimated total diamond weight 0.25ct. Weight 3.2gms. £300-400*

92



A 9ct gold diamond dress ring. The brilliant-cut diamond, to the similarly-cut diamond square-shape surround and tapered sides. *Total diamond weight 1.25cts, stamped to band. Hallmarks for London. Weight 8.8gms. £240-340*

88



A mid 20th century platinum diamond single-stone ring. The old-cut diamond collet, to the single-cut diamond line shoulders and tapered band. *Principal diamond estimated weight 0.65ct, I-J colour, P1 clarity. Weight 2.9gms. £260-360*

93



A synthetic spinel ring. The rectangular-shape synthetic spinel, to the foliate shoulders and plain band. *Weight 3.8gms. £70-100*

89



A mid 20th century platinum and 18ct gold diamond single-stone ring. The old-cut diamond, to the tapered band. *Estimated diamond weight 0.55ct, J-K colour, P1 clarity. Weight 2.7gms. £260-360*

94



An early 20th century platinum and 15ct gold aquamarine and pearl bar brooch. The oval-shape aquamarine, to the seed pearl double sides and plain band. *Length 5.1cms. Weight 2.8gms. £50-80*

90



A mid 20th century 18ct gold sapphire and diamond dress ring. The oval-shape sapphire line, within an old-cut diamond border, to the plain band. *Two diamonds deficient. Estimated total diamond weight 0.45ct. Weight 3.3gms. £150-200*

95



A diamond cluster ring. Of floral design, the single-cut diamond cluster, to the tapered shoulders and plain band. *Estimated total diamond weight 0.25ct. Weight 2.3gms. £50-80*

96

A diamond pendant. Designed as a series of three rose-cut diamonds, each within a single-cut diamond surround. *Estimated total single-cut diamond weight 0.20ct. Length 2.3cms. Weight 2.6gms. £150-200*

101

A 9ct gold diamond single-stone pendant. The brilliant-cut diamond collet, to the tapered surmount. *Diamond weight 0.15ct, stamped to mount. Hallmarks for Sheffield. Length 1cm. Weight 0.4gm. £30-50*

97

An 18ct gold diamond single-stone ring. The oval-shape diamond, to the tapered baguette-cut diamond shoulders and tapered band. *Principal diamond estimated weight 0.75ct, J-K colour, P2. Hallmarks for Birmingham. Weight 3.4gms. £240-340*

**102**

A diamond cluster ring. The brilliant-cut diamond within an illusion mount, to the similarly-cut diamond surround and tapered band. *Total diamond weight 0.24ct, stamped to band. Weight 5gms. £150-200*

**98**

A selection of four gem-set pendants. To include a 9ct gold amethyst and split pearl scrolling pendant, a 9ct gold topaz single-stone pendant, together with two garnet pendants. *Three with hallmarks for 9ct gold. Lengths 1.9 to 4.5cms. Total weight 8.7gms. £80-120*

**103**

An 18ct gold diamond three-stone ring. The three slightly graduated brilliant-cut diamonds, to the tapered band. *Estimated total diamond weight 1.75cts, I-K colour, P1-P2 clarity. Hallmarks for London, 1975. Weight 3.8gms. £660-860*

**99**

A mid 20th century 18ct gold diamond and sapphire floral cluster ring. The brilliant-cut diamond, within a circular-shape sapphire and graduated brilliant-cut diamond double surround. *Total diamond weight 0.60ct, stamped to band. Weight 4.5gms. £150-200*

**104**

An 18ct gold emerald and diamond cluster ring. The circular-shape emerald, within a brilliant-cut diamond surround, to the similarly-cut diamond cluster shoulders and plain band. *One diamond deficient. Estimated total diamond weight 0.50ct. Hallmarks for Edinburgh. Weight 3.8gms. £120-180*

**100**

A late Victorian 9ct gold split pearl and synthetic ruby bar brooch. Designed as an alternating split pearl and circular-shape synthetic ruby horseshoe, with geometric sides, to the split bar. *Hallmarks for Chester, 1897. Length 4.1cms. Weight 3gms. £40-60*



105 



A platinum diamond single-stone ring. The brilliant-cut diamond, weighing 1.01cts, within a partial collet setting, to the brilliant-cut diamond pavé-set shoulders and plain band. *Accompanied by report number F3C54257, dated 4th October 2006, from IGI, stating that the principal diamond is H colour, SI1 clarity. Hallmarks for Birmingham. Weight 9.9gms. £1,600-2,200*

106

An 18ct gold diamond five-stone ring. Of bicolour design, the brilliant-cut diamond line, inset to the asymmetric shoulders. *Total diamond weight 0.27ct, stamped to band. Hallmarks for Birmingham. Weight 3.6gms. £90-140*



107

An 18ct gold diamond half-circle eternity ring. The brilliant-cut diamond line, within a channel setting, to the plain half-band. *Total diamond weight 0.25ct, stamped to band. Hallmarks for London, 2008. Weight 2.8gms. £80-120*



108

A 9ct gold diamond half-circle eternity ring. The brilliant-cut diamond line, within a channel setting, to the plain half-band. *Total diamond weight 0.33ct, stamped to band. Import marks for London. Weight 3gms. £70-100*



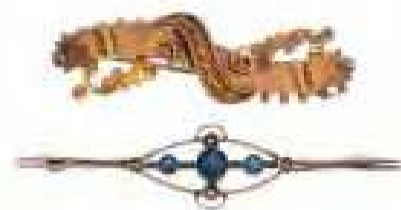
109

An 18ct gold diamond three-stone ring. The graduated brilliant-cut diamond line, to the tapered shoulders and plain band. *Total diamond weight 0.50ct, stamped to band, estimated I-J colour, P1-P2 clarity. Hallmarks for Birmingham. Weight 2.2gms. £100-150*



110

A selection of 9ct gold jewellery. To include an early 20th century scrolling bar brooch, an early 20th century blue gem and split pearl bar brooch, together with a ruby and diamond cross pendant. *Pendant with hallmarks for Sheffield. Length of brooches 5.5 and 4.4cms. Length of pendant 2.7cms. Total weight 7gms. £60-90*



111

An 18ct gold diamond single-stone ring. The brilliant-cut diamond, to the tapered shoulders and plain band. *Estimated diamond weight 0.45ct, H-I colour, P1 clarity. Hallmarks for Sheffield, 2013. Weight 2.5gms. £150-200*



112

A 14ct gold diamond half-circle eternity ring. The brilliant-cut diamond channel-set line, to the plain half-band. *Estimated total diamond weight 0.75ct. Hallmarks for Birmingham. Weight 4.5gms. £150-200*



113

An 18ct gold diamond three-stone ring. The slightly graduated brilliant-cut diamond line, to the tapered band. *Estimated total diamond weight 1.50cts, H-I colour, SI clarity. Hallmarks for Birmingham. Weight 3.1gms. £480-680*



114

A selection of four 9ct gold gem-set rings. To include a single-cut diamond crossover ring, a single-cut diamond seven-stone ring, together with two blue gem rings. *Estimated total diamond weight 0.20ct. Hallmarks for 9ct gold. Weight 9.1gms. £80-120*



119



An 18ct gold sapphire and diamond cluster ring. The oval-shaped sapphire, within a brilliant-cut diamond scalloped surround. *Estimated total diamond weight 0.40ct. Hallmarks for London, 1996. Weight 5gms. £120-180*

115

An 18ct gold diamond seven-stone ring. The graduated rectangular and square-shape diamond line, to the plain band. *Estimated total diamond weight 1.45cts, I-J colour, SI1-P1 clarity. Import marks for London, 1997. Weight 3.4gms. £220-320*



116

A mid 20th century 18ct gold diamond five-stone ring. The graduated old-cut diamond line, to the tapered shoulders and plain band. *Estimated total diamond weight 1.35cts, J-K colour, SI2-P1 clarity. Hallmarks for Birmingham. Weight 3.8gms. £300-400*



120 ✕

A selection of three brooches. To include a 9ct gold circular-shape ruby three-stone foliate spray brooch, a 9ct gold openwork spray brooch and a dolphin brooch. *Import marks for 1985 and hallmarks for Birmingham, 1971. Lengths 5.6 to 3.6cms. Total weight 12.4gms. £90-140*



117

An 18ct gold diamond three-stone ring. The slightly graduated brilliant-cut diamond line, to the tapered shoulders and plain band. *Total diamond weight 1ct, stamped to band, estimated I-J colour, P1-P2 clarity. Hallmarks for Birmingham, 2004. Weight 3.3gms. £240-340*



121

An 18ct gold diamond half-circle eternity ring. The brilliant-cut diamond line, within a channel setting, to the tapered half-band. *Estimated total diamond weight 0.20ct. Hallmarks for London, 2000. Weight 2.4gms. £80-120*



118

An 18ct gold diamond five-stone ring. The brilliant-cut diamond line, to the tapered shoulders and plain band. *Estimated total diamond weight 1ct. Hallmarks for Birmingham, 2001. Weight 4.4gms. £200-300*



122

A 9ct gold diamond three-stone ring. The graduated brilliant-cut diamonds, to the knife-edge shoulders and plain band. *Total diamond weight 0.36ct, stamped to band. Hallmarks for Birmingham. Weight 2.5gms. £80-120*



123 ✕



A selection of three gem-set pendants. To include a 9ct gold sapphire and diamond cross pendant, a 9ct gold opal and diamond pendant, together with a ruby line pendant, each suspended from a chain. *Three with hallmarks for 9ct gold. Length of pendants 2 to 2.7cms. Length of chains 45 to 46cms. Total weight 5.5gms. £50-80*

124

A 1920s 18ct gold sapphire and diamond five-stone ring. The oval and circular-shape sapphires, with single-cut diamond spacers, to the plain band. *Hallmarks for Birmingham, 1920. Weight 3.6gms. £80-120*



125

A selection of three 18ct gold gem-set rings. To include a mid 20th century brilliant and single-cut diamond three-stone ring, an early 20th century sapphire and diamond ring, together with a brilliant-cut diamond channel-set ring. *Estimated total diamond weight 0.35ct. Two with hallmarks for 18ct gold. Total weight 7gms. £100-150*



126

A 9ct gold sapphire and diamond cluster ring. The circular-shape sapphire, within a brilliant-cut diamond surround, to the tapered shoulders and plain band. *Estimated total diamond weight 0.20ct. Hallmarks for Birmingham. Weight 2.4gms. £30-50*



127

A sapphire and diamond ring. The rectangular-shape sapphire line, to the brilliant-cut diamond border and plain half-band. *Estimated total diamond weight 0.40ct. Weight 4gms. £120-180*



128

A 9ct gold sapphire and diamond bracelet. Designed as a series of oval-shape sapphires with brilliant-cut diamond trefoil sides, spaced to the fancy-link chain. *Estimated total diamond weight 0.20ct. Hallmarks for Birmingham. Length 19.7cms. Weight 11.7gms. £150-200*



129

A 9ct gold charm bracelet. The curb-link chain, with padlock clasp, suspending a series of thirteen charms, to include a jockey cap and a ships lantern. *Five with hallmarks for 9ct gold. Length 18cms. Total weight 33.4gms. £300-400*



130

A diamond five-stone ring. Designed as a series of five brilliant-cut diamonds, to the plain band. *Estimated total diamond weight 1ct. Weight 2.5gms. £150-200*



131

A diamond dress ring. Of openwork design, comprising three brilliant and baguette-cut diamond crossover lines. *Estimated total diamond weight 0.45ct. Weight 4.9gms. £150-200*



132

An opal and diamond cluster ring. The oval opal cabochon, within a brilliant and baguette-cut diamond surround, to the tapered shoulders. *Estimated total diamond weight 0.20ct. Weight 2.8gms. £50-80*



137

An 18ct gold diamond three-stone ring. The brilliant-cut diamonds, between curved line spacers, to the tapered band. *Estimated total diamond weight 0.20ct. Hallmarks for London, 2014. Weight 3.2gms. £80-120*



133



An early 20th century 9ct gold gate bracelet. Designed as a series of fancy five-bar links, to the padlock clasp. *Length 17.5cms. Weight 24.7gms. £240-340*

138

An 18ct gold diamond ring. The brilliant-cut diamond line, inset to the tapered band. *Estimated total diamond weight 0.75ct, H-J colour, SI clarity. Hallmarks for London, 2014. Weight 8.6gms. £240-340*



134

An 18ct gold diamond three-stone ring. The slightly graduated brilliant-cut diamond line, to the tapered band. *Estimated total diamond weight 0.50ct, I-J colour, VS clarity. Hallmarks for Birmingham, 2008. Weight 3gms. £150-200*



139

A 9ct gold diamond half-circle eternity ring. The brilliant-cut diamond line, within a channel setting, to the tapered half-band. *Diamond weight 0.25ct, stamped to the band. Hallmarks for London. Weight 1.5gms. £30-50*



135

Two rings. To include an early 20th century 18ct gold and platinum diamond three-stone ring, together with a blue and colourless paste cluster ring. *Estimated total diamond weight 0.20ct. Total weight 3.1gms. £80-120*



136

An early 20th century diamond five-stone ring. The slightly graduated old-cut diamond line, to the openwork gallery and tapered band. *Estimated total diamond weight 0.25ct. Weight 2.8gms. £100-150*



* 140

An emerald and diamond cluster ring. The oval-shape emerald, within a brilliant-cut diamond surround, to the tapered shoulders and plain band. *Total diamond weight 0.40ct, stamped to band. Emerald weight 1.18cts. Weight 4.4gms. £740-940*



141

An 18ct gold diamond single-stone ring. The brilliant-cut diamond, inset to the grooved panel and tapered band. *Estimated diamond weight 0.35ct. Hallmarks for Birmingham. Weight 12gms. £480-680*



146

An Edwardian sapphire and diamond three-stone ring. The circular-shape sapphire, with old-cut diamond sides, to the plain band. *Estimated total diamond weight 0.30ct. Hallmarks for Birmingham, 1903. Weight 2.4gms. £120-180*



142

An 18ct gold diamond three-stone ring. The slightly graduated brilliant-cut diamond line, to the tapered band. *Estimated total diamond weight 0.75ct, I-K colour, SI1-P1 clarity. Hallmarks for Birmingham, 1988. Weight 2.7gms. £200-300*



147

An 18ct gold diamond half-circle eternity ring. The brilliant-cut diamond angled lines, to the bi-colour band. *Estimated total diamond weight 0.30ct. Hallmarks for Birmingham, 1998. Weight 4.4gms. £120-180*



143

A mid 20th century 9ct gold opal ring. The oval opal cabochon, to the foliate shoulders and plain band. *Weight 2.5gms. £50-80*



148

An 18ct gold diamond seven-stone ring. The brilliant-cut diamond line, within a channel setting, to the tapered half-band. *Total diamond weight 0.50ct, stamped to band. Hallmarks for London, 1995. Weight 2.7gms. £100-150*



144

A 14ct gold diamond three-stone ring. The graduated square-cut diamond line, to the similarly-cut diamond channel shoulders and tapered band. *Principal diamond estimated weight 0.50ct, H-I colour, P1 clarity. Hallmarks for Birmingham. Weight 5.3gms. £280-380*



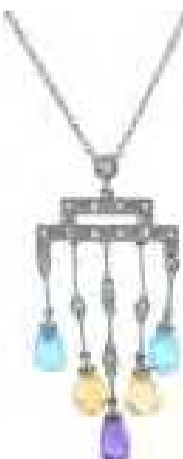
149

An 18ct gold diamond three-stone ring. The slightly graduated brilliant-cut diamond line, to the tapered band. *Total diamond weight 0.30ct, stamped to band, estimated H-I colour, SI clarity. Weight 2.4gms. £100-150*



145

An 18ct gold diamond and gem-set pendant. Designed as a brilliant-cut diamond geometric panel, suspending a diamond and amethyst, citrine and blue topaz briolette fringe, to the belcher-link chain. *Estimated total diamond weight 0.15ct. Hallmarks for Birmingham. Length of pendant 4.1cms. Length of chain 41cms. Weight 6.6gms. £150-200*



150

A diamond eternity ring. The diamond point three-quarter band, with scrolling foliate sides, to the replacement band section. *Weight 3.8gms. £80-120*



151



A selection of five pairs of earrings. To include a pair of 18ct gold pear-shape tanzanite and brilliant-cut diamond ear pendants, a pair of cultured pearl and diamond ear pendants, a pair of pear-shape blue topaz ear pendants, together with two further pairs of ear studs. *One with hallmarks for 18ct gold. Lengths 0.8 to 2cms. Total weight 13.3gms. £120-180*

152 ✕



A ruby and diamond cluster ring. The oval-shape ruby, within a rose and brilliant-cut diamond surround, to the openwork gallery and plain band. *Weight 1.6gms. £50-80*

156



A late 19th century silver and gold diamond single-stone ring. The old-cut diamond, within a collet mount, to the openwork gallery and tapered band. *Estimated diamond weight 1ct, H-I colour, SI clarity. Weight 3.1gms. £1,000-1,500*

153



A diamond pendant. The brilliant-cut diamond circle, suspended from a plain surmount loop. *Estimated total diamond weight 0.35ct. Diameter 2.5cms. Weight 2.3gms. £50-80*

157



A diamond floral dress ring. Of openwork design, the convergent bands, each with brilliant-cut diamond articulated line terminal. *Estimated total diamond weight 0.15ct. Foreign marks. Weight 7gms. £120-180*

154



A selection of 9ct gold gem-set rings. To include an emerald and diamond floral cluster ring, a sapphire and colourless-gem dress ring, together with a purple and colourless cubic zirconia three-stone ring. *Hallmarks for 9ct gold. Weight 7.4gms. £90-140*

158



A sapphire and diamond crescent brooch. The alternating oval-shape sapphire and old-cut diamond crescent, to the double bar. *Estimated total diamond weight 0.20ct. Length 4.2cms. Weight 5.4gms. £150-200*

155



A tanzanite diamond and mosaic opal ring. The oval-shape tanzanite partial collet, between single-cut diamond sides, to the mosaic opal shoulders. *AF. Estimated total diamond weight 0.10ct. Weight 5.6gms. £80-120*

159



A diamond dress ring. The brilliant-cut diamond collet, to the pavé-set diamond geometric panel sides and plain band. *Estimated total diamond weight 0.80ct. Weight 7.8gms. £300-400*

160



An aquamarine and diamond cluster ring. The square-shape aquamarine, within a brilliant-cut and square-shape diamond bevelled surround. *Estimated total diamond weight 0.80ct. Weight 5.4gms. £700-900*

164



An 18ct gold diamond three-stone crossover ring. The brilliant-cut diamonds, between asymmetric shoulders, to the plain band. *Total diamond weight 0.50ct, stamped to mount. Hallmarks for London. Weight 4.7gms. £220-320*

165



A pair of synthetic colour change corundum single-stone ear pendants. Each designed as an oval synthetic colour change corundum, within a plain surround, to the hook fitting. *Length 1.8cms. Weight 2.5gms. £30-50*

161



An 18ct gold diamond dress ring. The square-shape diamond panel, to the brilliant-cut diamond line shoulders and tapered band. *Total diamond weight 1ct stamped to band, estimated H-J colour, SI2-P1 clarity. Hallmarks for London, 2014. Weight 5.7gms. £240-340*

166



A mid 20th century 18ct gold diamond cluster ring. The single-cut diamond square-shape panel, with scalloped edge and bi-colour shoulders. *Estimated total diamond weight 0.35ct. Weight 2.1gms. £80-120*

162



An 18ct gold diamond half-circle eternity ring. The brilliant-cut diamond line to the tapered band. *Estimated total diamond weight 0.75ct. Hallmarks for London, 2000. Weight 3.3gms. £180-260*

167



A split-pearl and paste pendant. The paste drop, suspended from an oval paste cabochon within a series of red paste and split pearl accent textured surrounds. *May be worn as a brooch. Length 6.4gms. Weight 13.2gms. £120-180*

163



A paste single-stone ring. The oval blue paste cabochon, to the plain sides. *Weight 6.4gms. £40-60*

168 ✕



Two dress rings and a jade pendant. To include a 9ct gold cubic zirconia cluster ring, a cultured pearl and stained cultured pearl crossover ring, together with a carved jadeite Buddha pendant. *One ring with hallmarks for Birmingham, 1991. Length of pendant 1.7cms. Total weight 11.7gms. Jade untested. £70-100*

169

A diamond pendant. The brilliant-cut diamond, inset to the pavé-set diamond curve, suspended from a 9ct gold snake-link cord. *Principal diamond estimated weight 0.40ct, H-I colour, SI clarity. Cord with hallmarks for Sheffield. Length of pendant 2.5cms. Length of cord 43cms. Total weight 13.8gms. £300-400*



174

An 18ct gold diamond half-circle eternity ring. The brilliant-cut diamonds, within a channel-setting, to the tapered half-band. *Estimated total diamond weight 0.50ct. Hallmarks for London. Weight 2.8gms. £80-120*



170

An 18ct gold band ring. *Hallmarks for Birmingham, 1940. Weight 3.3gms. £60-90*



175

An early 20th century 18ct gold synthetic ruby and diamond ring. The graduated circular-shape synthetic ruby line, with old-cut diamond spacers, to the scrolling gallery and sides. *Hallmarks partially indistinct. Weight 1.8gms. £50-80*



171

An 18ct gold diamond five-stone ring. The brilliant-cut diamond line, to the plain band. *Total diamond weight 0.50ct, stamped to band. Hallmarks for Sheffield. Weight 4gms. £150-200*



176

A selection of three 9ct gold gem-set rings. To include a 9ct gold circular-shape smoky quartz dress ring, a rectangular-shape green quartz dress ring, together with a 9ct gold green paste ring. *Two with hallmarks for Birmingham. Total weight 15.2gms. £90-140*



172

An early 20th century 9ct gold imitation pearl pendant. The scrolling pendant with central imitation pearl and drop, to the imitation pearl accent chain. *Length of pendant 3.5cms. Length of chain 24.5cms. Weight 3.7gms. £55-75*



177

A selection of three single-stone dress rings. To include an early 20th century 9ct gold oval-shape citrine collet ring, a 9ct gold oval opal cabochon ring, together with an amethyst and diamond accent bi-colour ring. *One with hallmarks for Birmingham, 2007. Total weight 10.4gms. £90-140*



173

An 18ct gold diamond three-stone band ring. The brilliant-cut diamonds, between bar spacers, inset to the bi-colour band. *Estimated total diamond weight 0.35ct. Hallmarks for London, 2014. Weight 7.4gms. £150-200*



178



A gentleman's sapphire single-stone ring. The oval-shaped sapphire, set within a rectangular-shaped surround, to the tapered band. *Estimated dimensions of sapphire: 11.7 by 8.1, by 8mms. Weight 25.1gms. £500-700*

182



An 18ct gold diamond three-stone ring. The brilliant-cut diamonds, between grooved spiral sides, to the tapered band. *Estimated total diamond weight 0.30ct. Hallmarks for Birmingham. Weight 4.8gms. £120-180*

183



A 9ct gold diamond single-stone crossover ring. The brilliant-cut diamond, between similarly-cut diamond asymmetrical shoulders, to the tapered band. *Estimated total diamond weight 0.25ct. Hallmarks for London. Weight 2.6gms. £100-150*

179



A platinum diamond single-stone ring. The brilliant-cut diamond, to the tapered band. *Estimated diamond weight 1ct, H-I colour, P3 clarity. Hallmarks for London, 2009. Weight 3.5gms. £400-600*

184



A sapphire full-circle eternity ring. Designed as a series of square-shaped sapphires, to the scroll engraved sides. *Ring size K. Weight 2.7gms. £50-80*

180



A 9ct gold cubic zirconia dress ring. Of crossover design, the circular-shaped colourless cubic zirconia channel-set lines, to the grooved shoulders and tapered band. *Hallmarks for Sheffield. Weight 2.4gms. £30-50*

185



An 18ct gold diamond half-circle eternity ring. The brilliant-cut diamond line, within a channel setting, to the tapered half-band. *Total diamond weight 0.50ct, stamped to band. Hallmarks for Edinburgh. Weight 2.4gms. £120-180*

181



A 9ct gold diamond four-stone ring. The brilliant-cut diamond line, to the plain band. *Total diamond weight 1.40cts, stamped to band, estimated H-J colour, SI2-P1 clarity. Hallmarks for Birmingham, 2004. Weight 3.3gms. £240-340*

186



An 18ct gold diamond seven-stone ring. The graduated brilliant-cut diamond line, to the tapered band. *Estimated total diamond weight 0.55ct. Hallmarks for Birmingham. Weight 4.2gms. £180-260*

187

A diamond accent dress ring. Of openwork design, the oval-shape link motif, with brilliant-cut diamond highlights. *Weight 5.7gms. £120-180*



192

A pair of 9ct gold lapis lazuli ear studs. Each designed as an oval lapis lazuli cabochon collet. *Hallmarks for London, 1998. Length 1.4cms. Weight 3.3gms. £50-80*



188

Two diamond dress rings. To include an 18ct gold single-cut diamond stylised band ring and a brilliant-cut diamond three-stone ring. *Estimated total diamond weight 0.15ct. One with hallmarks for Birmingham, 1993. Total weight 7.4gms. £120-180*



193

A 9ct gold paste dress ring. Of angular design, the circular-shape colourless paste angular line, to the plain band. *Hallmarks for Birmingham. Weight 4.1gms. £50-80*



189

An early 20th century 9ct gold bracelet. The curb-link bracelet, to the heart-shape padlock clasp and key highlight. *Length 19cms. Weight 31.1gms. £360-460*



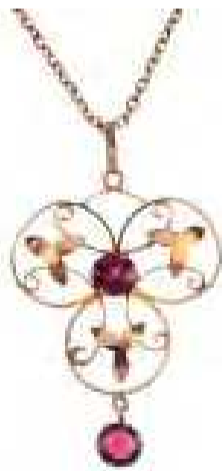
194

A 9ct gold diamond dress ring. The openwork woven lattice, with brilliant-cut diamond accents, to the plain band. *Estimated total diamond weight 0.10ct. Hallmarks for London. Weight 1.9gms. £30-50*



190

An early 20th century 9ct gold garnet pendant. Of openwork design, the circular-shape garnet within a scrolling foliate trefoil surround, suspending a circular-shape garnet drop, to the later trace-link chain. *Length of pendant 4.1cms. Length of chain 61cms. Total weight 6.1gms. £60-90*



195

An 18ct gold diamond seven-stone ring. The brilliant-cut diamond chevron, to the plain band. *Estimated total diamond weight 0.75ct. Hallmarks for Birmingham. Weight 4.1gms. £200-300*



191

A 9ct gold diamond three-stone ring. The three brilliant-cut diamonds, to the plain band. *Estimated total diamond weight 0.45ct. Hallmarks for Birmingham. Weight 3.2gms. £150-200*



196

An 18ct diamond bar brooch. The old-cut diamond line, to the plain sides. *Estimated total diamond weight 0.70ct. Hallmarks for Birmingham, 1995. Weight 5gms. £180-260*



197

An 18ct gold diamond single-stone ring. The brilliant-cut diamond, to the plain band. *Diamond weight 0.50ct, stamped to band, estimated H-I colour, P1 clarity. Hallmarks for London. Weight 2.7gms. £180-260*

**202**

An 18ct gold diamond half-circle eternity ring. Designed as a series of brilliant-cut diamonds, within a channel setting, to the plain half-band. *Total diamond weight 0.50ct, stamped to band. Hallmarks for Sheffield. Weight 3.9gms. £120-180*

**198** ✕

A pair of 9ct gold ruby and diamond cluster ear studs. Each of square outline, the circular-shape ruby quatrefoil, within a single-cut diamond surround. *Estimated total diamond weight 0.15ct. Hallmarks for Birmingham. Length 0.9cms. Weight 2.2gms. £60-90*

203

An 18ct gold diamond three-row ring. Designed as three graduated brilliant-cut diamond lines, each within a channel setting, to the tapered band. *Total diamond weight 1ct, stamped to band. Hallmarks for Birmingham. Weight 7.4gms. £260-360*

**199**

A 9ct gold diamond half-circle eternity ring. The brilliant-cut diamond line, within a channel setting, to the plain half-band. *Diamond weight 0.25ct, stamped to band. Hallmarks for London. Weight 2.1gms. £50-80*

**204**

An 18ct gold diamond crossover ring. The square-shape diamond line, within a channel setting, to the crossover bands. *Total diamond weight 0.50ct, stamped to band. Import marks for London, 1993. Weight 3.9gms. £120-180*

**200**

A mid 19th century gold, diamond and split pearl brooch. The rose-cut diamond and split pearl flowers, with split pearl scrolling foliate spacers. *Length 3.3cms. Weight 5.8gms. £120-180*

**205** ✕

A 9ct gold ruby and diamond ring. Of lozenge-shape outline, the circular-shape ruby quatrefoil, within a single-cut diamond surround, to the tapered shoulders. *Hallmarks for Birmingham. Weight 2.3gms. £60-90*

**201**

A gem-set dress ring. The free-form green gem cabochon, within a collet mount, to the trifurcated shoulders and plain band. *Weight 17.7gms. £150-200*

**206**

An 18ct gold diamond half-circle eternity ring. The brilliant-cut diamond line, within a channel setting, to the plain half-band. *Total diamond weight 0.50ct, stamped to band. Hallmarks for Sheffield. Weight 3.1gms. £100-150*



207

A late 19th century paste and diamond single earring. The oval-shape purple paste, within a rose-cut diamond scrolling surround. *Length 2cms. Weight 4.7gms. £30-50*



212

A 9ct gold opal and diamond ring. The oval opal cabochons, with single-cut diamond double spacers, to the scrolling gallery and plain band. *Hallmarks for London, 1986. Weight 3gms. £40-60*



208

An early 20th century 9ct gold fancy-link bracelet with T-bar. The fetter and trombone-link chain, with T-bar and lobster clasp. *Length 24cms. Weight 12.3gms. £180-260*



209

An early 20th century diamond brooch. The old-cut diamond, to the angular bar, with scroll and bead detail. *Length 4cms. Weight 3gms. £60-90*



213

A selection of three 9ct gold diamond rings. To include a diamond buckle ring, together with two diamond single-stone rings. *First with paste replacements. Estimated total diamond weight 0.15ct. Hallmarks for 9ct gold. Weight 4.8gms. £40-60*



210

An early 20th century 9ct gold bracelet. The curb-link chain, suspending a later spinner and charm. *Charm with hallmarks for 9ct gold. Length 17.5cms. Total weight 15.6gms. £150-200*



214

An 18ct gold diamond three-stone ring. The graduated brilliant-cut diamond line, to the plain band. *Estimated total diamond weight 0.85ct. Hallmarks for Edinburgh. Weight 4.4gms. £220-320*



211

An 18ct gold sapphire and diamond pendant. The oval-shape pink sapphire, to the brilliant-cut diamond line surmount, suspended from a box-link chain. *Hallmarks for Edinburgh, 2003 and Sheffield. Length of pendant 2.3cms. Length of chain 46cms. Weight 4.1gms. £70-100*



215

A diamond four-stone ring. The square-shape diamond panel, to the tapered band. *Total diamond weight 0.20ct, engraved to band. Weight 2.4gms. £50-80*



216

A late Victorian 18ct gold diamond three-stone ring. The old-cut diamonds, inset the tapered band, with grooved shoulders. *Hallmarks for London, 1886. Weight 5.1gms. £120-180*



220

A diamond half-circle eternity ring. The brilliant-cut diamond line, within a channel setting, to the plain band. *Total diamond weight 0.74ct, stamped to band. Weight 4.2gms. £180-260*



217

An 18ct gold diamond five-stone ring. Designed as a series of five brilliant-cut diamonds, to the scrolling gallery and plain band. *Estimated total diamond weight 0.45ct. Hallmarks for Sheffield, 2003. Weight 4.3gms. £150-200*



221

An 18ct gold diamond three-stone ring. The brilliant-cut diamonds, to the curved band. *Estimated total diamond weight 0.30ct. Hallmarks for London, 2014. Weight 4.1gms. £100-150*



218

An 18ct gold diamond three-stone ring. The square-shape diamond, with brilliant-cut diamond sides, to the plain band. *Total diamond weight 0.53ct, stamped to band. Hallmarks for Birmingham. Weight 3.5gms. £120-180*



222

A diamond band ring. Designed as a series of single-cut diamonds, each within a star setting, inset at intervals to the plain band. *Estimated total diamond weight 0.15ct. Weight 6.1gms. £100-150*

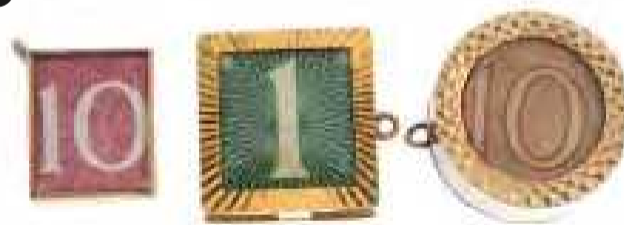


219



An early 20th century 18ct gold diamond and enamel pansy pendant. The old-cut diamond, to the white enamel petals, suspended from a belcher-link chain, may be worn as a brooch. *Estimated diamond weight 0.45ct. Length of pendant 3.5cms. Length of chain 71cms. Weight 15gms. £360-460*

223



A selection of seven 9ct gold note charms. The Ten Shilling and One Pound notes, within cylindrical, square and rectangular-shape mounts. *Hallmarks for 9ct gold. Lengths 1.6 to 3cms. Weight 21.8gms. £200-300*

224

A diamond ring. The pavé-set diamond panel, to the plain sides and band. *Estimated total diamond weight 0.50ct. Weight 7.6gms. £150-200*



225

An 18ct gold diamond dress ring. Designed as three square-shape diamond panels, to the plain band. *Estimated total diamond weight 0.45ct. Hallmarks for Birmingham. Weight 2.4gms. £80-120*



230

A colour treated diamond single-stone ring. The square-shape colour treated 'pink' diamond, to the tapered band. *Estimated diamond weight 0.40ct. Weight 4.3gms. £240-340*



226

An 18ct gold diamond five-stone ring. Designed as a series of five brilliant-cut diamonds, to the plain band. *Estimated total diamond weight 0.75ct. Hallmarks for London, 2001. Weight 3.3gms. £200-300*



231

An 18ct gold diamond ring. The three graduated brilliant and circular-cut diamonds, with single-cut diamond double intervals, to the scrolling gallery and shoulders. *Total diamond weight 0.29ct, stamped to band. Hallmarks for Birmingham. Weight 4gms. £120-180*



227

A 9ct gold diamond three-stone ring. The graduated brilliant-cut diamond line, with illusion mounts, to the plain band. *Total diamond weight 0.35ct, stamped to band. Hallmarks for Sheffield. Weight 2.7gms. £50-80*



232

A 14ct gold diamond three-stone ring. The three square-shape diamonds, to the plain band. *Estimated total diamond weight 0.85ct. Hallmarks for London, 2014. Weight 4.1gms. £150-200*



228

An 18ct gold diamond half-circle eternity ring. Designed as a series of brilliant-cut diamonds, within a channel setting, to the plain band. *Total diamond weight 0.33ct, stamped to band. Hallmarks for London. Weight 2.9gms. £100-150*



233

An early 20th century platinum and 18ct gold diamond three-stone ring. The graduated circular-cut diamond line, to the tapered band. *Estimated total diamond weight 0.20ct. Weight 1.8gms. £80-120*



229



A 9ct gold gate bracelet. Designed as a series of gate links with spiral link detail, to the padlock clasp. *Hallmarks for London and partially illegible. Length 16.5cms. Weight 18.8gms. £150-200*

234



A selection of six 9ct gold note charms. The pre-decimal notes, within cylindrical and rectangular-shape mounts. *Five with hallmarks for 9ct gold. Lengths 1.7 to 2.7cms. Total weight 17gms. £150-200*



An 18ct gold diamond bracelet. Designed as a series of brilliant-cut diamond quatrefoil links, to the partially concealed clasp. *Total diamond weight 5cts, stamped to clasp. Hallmarks for Sheffield. Length 17.3cms. Weight 15.1gms. £440-640*

236

A late Victorian 18ct gold keeper ring. The textured woven panel, with disc highlights, to the grooved band. *Hallmarks for Chester, 1899. Weight 4.3gms. £80-120*



240

An 18ct gold diamond two-row ring. The square-shape diamond panel, to the tapered band. *Estimated total diamond weight 0.85ct. Hallmarks for London, 2014. Weight 4.1gms. £220-320*



237

A 14ct gold diamond six-stone ring. Designed as a brilliant-cut diamond line, within a channel setting, to the plain band. *Estimated total diamond weight 0.50ct. Hallmarks for London, 2014. Weight 5.6gms. £180-260*



241

A platinum diamond three-stone ring. The brilliant-cut diamond line, to the crossover shoulders. *Total diamond weight 0.33ct, stamped to band. Hallmarks for London. Weight 5.5gms. £180-260*



238

A 9ct gold diamond ring. The brilliant-cut diamond line, within a channel setting, to the plain band. *Total diamond weight 0.33ct, stamped to band. Hallmarks for London, 2014. Weight 2.9gms. £80-120*



242

A 9ct gold diamond three-stone ring. The brilliant-cut diamond line, within a shared partial collet setting, to the curved bar shoulders and plain band. *Total diamond weight 0.33ct, stamped to band. Hallmarks for London. Weight 2.8gms. £80-120*



239

A 9ct gold diamond three-stone ring. The three brilliant-cut diamonds, each within a square-shape surround, to the plain band. *Estimated total diamond weight 0.35ct. Hallmarks for 9ct gold, partially indistinct. Weight 3.1gms. £80-120*



243

An opal and sapphire pendant. The oval opal cabochon, with circular-shape white sapphire three-stone spacer and tapered surmount. *Length 4cms. Weight 4gms. £60-90*



244

An 18ct gold diamond seven-stone ring. The brilliant-cut diamond line, within a channel setting, to the plain band. *Estimated total diamond weight 0.35ct. Hallmarks for Birmingham. Weight 2.5gms. £80-120*



249



A sapphire and diamond cluster ring. The circular-shape sapphire, within a brilliant-cut diamond scalloped kite-shape surround, to the brilliant-cut diamond shoulders and plain half-band. *Estimated total diamond weight 0.55ct. Weight 3.1gms. £500-700*

245



An early 20th century 9ct gold hinged bangle. The hollow bangle, with stylised belt and buckle motif. *Inner diameter 5.9cms. Weight 6.8gms. £60-90*

246

A 9ct gold diamond seven-stone ring. The brilliant-cut diamonds, each within an illusion setting, to the tapered band. *Total diamond weight 0.20ct, stamped to band. Hallmarks for Sheffield, partially indistinct. Weight 3.3gms. £50-80*



250

A cultured pearl and diamond cross pendant. The stylised Celtic cross, with graduated split pearl arms and old-cut diamond curved bar accents and surmount. *Estimated total diamond weight 0.30ct. Length 5cms. Weight 6gms. £150-200*



247

A 9ct gold diamond five-stone ring. Designed as a brilliant-cut diamond line, within a channel setting, to the plain band. *Estimated total diamond weight 0.35ct. Hallmarks for Birmingham. Weight 3.5gms. £80-120*



251

An early 20th century 18ct gold diamond five-stone ring. The graduated old-cut diamond line, to the scrolling gallery. *Estimated total diamond weight 0.60ct. Weight 2.2gms. £200-300*



248

An 18ct gold diamond five-stone ring. The graduated old-cut diamond line, to the grooved shoulders and openwork gallery. *Estimated total diamond weight 0.60ct. Hallmarks for Birmingham. Weight 2.9gms. £120-180*



252

An early 20th century 18ct gold diamond five-stone ring. The graduated old-cut diamond line, to the pierced sides and scrolling shoulders. *Estimated total diamond weight 0.10ct. Hallmarks for Chester, partially indistinct. Weight 2.1gms. £70-100*



253 ✕



A mid 20th century platinum and 18ct gold ruby and diamond floral cluster ring. The oval-shape ruby, within a single-cut diamond petal surround. *Estimated total diamond weight 0.10ct. Weight 3.6gms. £200-300*

257

A 14ct gold diamond three-stone ring. The three square-shape diamonds, to the brilliant-cut diamond channel set shoulders. *Estimated total diamond weight 1.05cts. Hallmarks for Birmingham. Weight 4.4gms. £220-320*



258



A 9ct gold diamond bracelet. Of bi-colour design, the brilliant-cut diamond collets with grooved bar sides, alternating with brilliant-cut diamond bars, to the partially concealed clasp. *Total diamond weight 1.50cts, stamped to clasp. Hallmarks for Sheffield. Length 18.5cms. Weight 13.1gms. £300-400*

254

An 18ct gold diamond seven-stone ring. Designed as a series of brilliant-cut diamonds, to the plain sides and tapered band. *Total diamond weight 0.50ct, stamped to band. Hallmarks for London. Weight 3.7gms. £200-300*



259

An 18ct gold diamond five-stone ring. The graduated brilliant-cut diamond line, to the scrolling gallery and plain band. *Estimated total diamond weight 0.50ct, J-K colour, SI2-P1 clarity. Hallmarks for Birmingham. Weight 3.9gms. £200-300*



255 ✕



A 9ct gold split pearl and ruby butterfly brooch. The split pearl thorax, to the circular-shape ruby eyes and similarly gem-set wings. *Hallmarks for London, 1978. Length 4cms. Weight 5.5gms. £60-90*

260

A diamond trefoil ring. The old-cut diamond trefoil, to the textured heart-shape surround and shoulders. *Estimated total diamond weight 0.10ct. Weight 2.2gms. £50-80*



256

An 18ct gold diamond three-stone ring. The brilliant-cut diamond line, to the openwork gallery and plain band. *Total diamond weight 0.29ct, stamped to band. Hallmarks for Birmingham, 2003. Weight 2.7gms. £90-140*



261

An 18ct gold diamond full-circle eternity ring. Designed as a single-cut diamond line, to the plain sides. *Estimated total diamond weight 0.70ct. Hallmarks for London, 2014. Weight 2.5gms. £200-300*



262 ✕

A selection of seven pairs of earrings. To include a pair of 9ct gold amethyst floral earrings, a pair of rectangular-shape amethyst ear studs with diamond accent claws, a pair of pink sapphire and diamond earrings, together with four further pairs. *One with hallmarks for Birmingham, 1970. Lengths 2.4 to 0.7cm. Total weight 10.2gms. £90-140*



267

A diamond half-circle eternity ring. The brilliant-cut diamond line, within a channel-setting, to the plain band. *Total diamond weight 0.28ct, stamped to band. Weight 2.7gms. £70-100*



263

Two gem-set rings. To include a brilliant-cut diamond single-stone ring and a mid 20th century 18ct gold sapphire and diamond cluster ring. *Estimated total diamond weight 0.10ct. Total weight 6.6gms. £100-150*



268

An early 20th century diamond snake ring. The coiled snake, with old-cut diamond eyes. *Weight 14gms. £340-440*



264

An 18ct gold diamond three-stone ring. Of crossover design, the brilliant-cut diamonds, to the curved shoulders, and plain band. *Total diamond weight 0.25ct, stamped to band. Hallmarks for Birmingham. Weight 2.5gms. £70-100*



269

A selection of four diamond and gem-set pendants. To include a blue topaz pendant with diamond scrolling surround, a cultured pearl pendant with bow surmount, an amethyst pendant, an amethyst and diamond accent pendant, together with two chains. *Estimated total diamond weight 0.10ct. Three with hallmarks for 9ct gold. Length of pendants 2.3 to 1.5cms. Length of chains 45cms each. Total weight 6.2gms. £70-100*



265

An 18ct gold diamond cluster ring. Of floral design, the brilliant-cut diamond cluster, to the plain band. *One diamond deficient. Estimated total diamond weight 1.15cts, H-J colour, SI clarity. Hallmarks for Birmingham. Weight 3.6gms. £200-300*



270

A group of four brooches. To include two 9ct gold foliate brooches, one with cultured pearl detail, an early 20th century imitation pearl scrolling brooch and a further openwork scrolling brooch. *Two with hallmarks for 9ct gold. Lengths 4.8 to 4.1cms. Total weight 10.3gms. £80-120*



266 ✕

A gem-set clown pendant. Designed as an articulated clown, with circular-shape ruby, sapphire and emerald highlights. *Length 4.3cms. Weight 7.8gms. £90-140*



271

A 9ct gold artist's palette brooch. Comprising two brushes, atop the artist's palette, with enamel accents. *Hallmarks for London, 1985. Length 3.1cms. Weight 3.9gms. £40-60*



272

An 18ct gold diamond three-stone ring. The old-cut diamonds, to the rose-cut diamond double spacers and scrolling gallery. *Estimated total diamond weight 0.30ct. Hallmarks for London, 2014. Weight 3.4gms. £120-180*

**277**

An 18ct gold amethyst and diamond pendant. The triangular-shape amethyst cabochon and brilliant-cut diamond surround, with tapered surmount, suspended from a slightly textured collar. *Estimated total diamond weight 0.40ct. Pendant with hallmarks for Birmingham. Length of pendant 3.5cms. Length of collar 42cms. Total weight 11.6gms. £280-380*

**273**

An 18ct gold diamond three-stone ring. The slightly graduated square-shape diamond line, to the plain band. *Total diamond weight 1.02cts, stamped to band, estimated I-J colour, SI clarity. Hallmarks for London. Weight 5.5gms. £260-360*

**278**

A 9ct gold cubic zirconia seven-stone ring. The circular-shape colourless cubic zirconia, to the plain band. *Hallmarks for Sheffield. Weight 2.7gms. £30-50*

**274** ✕

Two 9ct gold gem-set dress rings. To include an opal and ruby cluster ring, together with a diamond, blue topaz and amethyst floral ring. *Hallmarks for London, 1973 and London. Weight 6.7gms. £60-90*

**279**

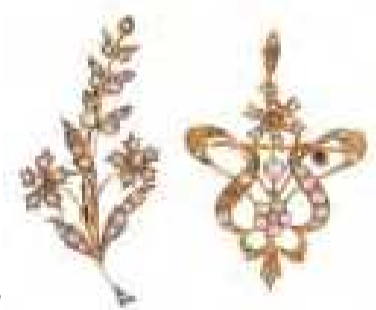
An 18ct gold diamond half-circle eternity ring. The square-shape diamond line, within a channel-setting, to the plain half-band. *Estimated total diamond weight 1ct. Hallmarks for Birmingham. Weight 10.6gms. £300-400*

**275**

A 9ct gold diamond cluster ring. The brilliant-cut diamond marquise-shape panel, to the tapered baguette-cut diamond surround with brilliant-cut diamond terminals. *Estimated total diamond weight 1.60cts. Hallmarks for London. Weight 3.8gms. £200-300*

**280**

Two early 20th century gold split pearl items of jewellery. To include a 15ct gold split pearl scrolling floral pendant, together with a 9ct gold floral spray brooch. *Lengths 4.7 and 4cms. Total weight 8.4gms. £100-150*

**276**

An 18ct gold diamond seven-stone ring. The brilliant-cut diamond line, with double-claw spacers, to the plain band. *Estimated total diamond weight 1ct, I-J colour, P1 clarity. Hallmarks for London, 2014. Weight 3.9gms. £300-400*

**281**

A diamond and gem-set pendant. The vari-size brilliant-cut diamond, circular-shape blue topaz and amethyst staggered line, suspended from a grooved surmount, to the flattened curb-link chain. *Estimated total diamond weight 0.15ct. Length of pendant 3.2cms. Length of chain 51cms. Weight 6.2gms. £70-100*



282

A group of three gem-set dress rings. To include a mid 20th century 18ct gold oval opal cabochon three-stone ring, a 9ct gold circular-shape emerald and marquise-shape opal cabochon cluster ring and a 9ct gold multi gem-set floral cluster ring. *Two with hallmarks for 9ct gold. Total weight 7.6gms. £70-100*



283

A 9ct gold diamond cluster ring. The brilliant-cut diamond cluster, to the plain band. *Total diamond weight 0.29cts, stamped to band. Hallmarks for Sheffield, 1984. Weight 1.3gms. £40-60*



287



A diamond three-stone ring. The slightly graduated brilliant-cut diamond collet line, to the similarly-cut diamond shoulders and plain band. *Estimated total diamond weight 1.10cts, L-tinted colour, SI2-P1 clarity. Weight 2.8gms. £1,000-1,500*

284

An 18ct gold diamond five-stone ring. The brilliant-cut diamonds, between bar-spacers, to the plain band. *Estimated total diamond weight 0.30ct, I-J colour, P1-P2 clarity. Hallmarks for Birmingham. Weight 2.8gms. £60-90*



288



A pair of diamond earrings. Each designed as two curved panels, highlighted with pavé-set diamonds. *Estimated total diamond weight 1.20cts. Length 2cms. Weight 6.6gms. £150-200*

285

A sapphire and diamond trefoil ring. The two old-cut diamonds and circular-cut sapphire, to the asymmetric sides. *Estimated total diamond weight 0.30ct. Weight 2.8gms. £120-180*



289 ✕

Two 9ct gold glass-filled ruby and diamond rings. To include a pear-shape glass-filled ruby and brilliant-cut diamond three-stone ring, together with an oval-shape glass-filled ruby four-stone ring with single-cut diamond double spacers. *Hallmarks for Sheffield and Birmingham. Weight 4.7gms. £60-90*



286

An 18ct gold diamond three-stone ring. The brilliant-cut diamond diagonal line, to the crossover shoulders, with single-cut diamond foliate sides. *Estimated total diamond weight 0.20ct. Hallmarks for Birmingham, 1990. Weight 2.3gms. £80-120*



290

Two gem-set rings. To include an 18ct gold circular-shape sapphire and single-cut diamond eight-stone ring, together with a circular-shape sapphire single-stone ring. *One with hallmarks for London, 1975. Total weight 6.3gms. £90-140*



291

A late 19th century 18ct gold sapphire, split pearl and diamond ring. The two circular-shape sapphires, within a split pearl quatrefoil and diamond point surround, to the split pearl sides and tapered band. *Weight 3.3gms. £90-140*

**295**

A 9ct gold diamond heart ring. The band with a series of openwork heart motifs, three with diamond surrounds. *Estimated total diamond weight 0.25ct. Hallmarks for Birmingham. Weight 4.3gms. £60-90*

**292**

A 9ct gold amethyst and diamond hinged bangle. The front designed as a series of circular-shape amethysts, with single-cut diamond spacers, to the plain half-bangle. *Estimated total diamond weight 0.15ct. Import marks for Birmingham. Inner diameter 5.8cms. Weight 9.3gms. £100-150*

**296**

An 18ct gold diamond floral cluster ring. The brilliant-cut diamond, within a single-cut diamond petal surround. *Estimated total diamond weight 0.40ct. Hallmarks for London, 1974. Weight 4.1gms. £80-120*

**293**

A selection of three 9ct gold cross pendants. Two with engraved detail, one with polished finish suspended from a fancy-link chain. *Hallmarks for Birmingham. Lengths of pendants 3.2 to 2.5cms. Length of chain 44.8cms. Weight 7.4gms. £60-90*

**297**

An early 20th century 18ct gold Mizpah ring. The raised letters, to the plain band. *Hallmarks for Birmingham, 1910. Weight 4gms. £70-100*

**294**

An emerald and diamond necklace. Comprising three slightly graduated pear-shape emeralds, connected by brilliant-cut diamond accent curved bars, suspended from an integral fancy-link chain. *Estimated total diamond weight 0.10ct. Italian marks to clasp. Length of pendant 4.6cms. Length of chain 40cms. Weight 16.2gms. £600-800*

298

A diamond single-stone ring. The brilliant-cut diamond, to the asymmetric shoulders. *Estimated diamond weight 0.25ct, I-J colour, SI2-P1 clarity. Weight 1.1gms. £100-150*

**299**

A 9ct gold synthetic ruby and diamond cluster ring. The rectangular-shape synthetic ruby, within a brilliant-cut diamond surround, to the plain band. *Estimated total diamond weight 0.25ct. Hallmarks for London, 1993. Weight 2.8gms. £40-60*



300



A topaz bracelet. Designed as a series of rectangular-shape blue topaz, to the curved link strap. One similarly-shaped replacement aquamarine. Length 16.3cms. Weight 22.9gms. £400-600

305



An 18ct gold diamond single-stone crossover ring. The brilliant-cut diamond, with similarly-cut diamond highlight, to the asymmetric shoulders and plain band. *Principal diamond estimated weight 0.25ct, I-J colour, SI clarity. Hallmarks for London, 2012. Weight 1.8gms. £70-100*

301



A 9ct gold diamond band ring. The brilliant-cut diamond line, to the tapered band. *Estimated diamond weight 0.25ct. Hallmarks for Birmingham, 2011. Weight 2.2gms. £60-90*

306



A pair of diamond floral ear pendants. Each designed as a rose-cut diamond flower, within a foliate surmount, with rose-cut diamond star drop. Length 2.4cms. Weight 2.8gms. £40-60

302 ✕



Two 9ct gold diamond and gem-set rings. To include an oval-shape glass-filled ruby and brilliant-cut diamond stepped cluster ring, together with an oval-shape green gem and single-cut diamond three-stone ring. *Estimated total diamond weight 0.15ct. Hallmarks for Birmingham. Total weight 6.6gms. £80-120*

307 ✕



A group of three gem-set dress rings. To include a 9ct gold oval-shape prasiolite and circular-shape white sapphire cluster ring, a circular star sapphire cabochon single-stone ring, together with a circular-shape ruby full-circle eternity ring. *One ruby deficient. One with hallmarks for Birmingham. Eternity ring size V. Total weight 10gms. £90-140*

303



A selection of four gem-set brooches. To include an early 20th century aquamarine bar brooch, an early 20th century 9ct gold and silver dog bar brooch, together with two further brooches. Lengths 2 to 4.6cms. Total weight 13.1gms. £50-80

308



A sapphire and diamond ring. The alternating graduated circular-shape sapphire and brilliant-cut diamond line, to the scrolling gallery and plain band. *Estimated total diamond weight 0.20ct. Weight 3.2gms. £90-140*

304



An 18ct gold diamond three-stone ring. The circular-cut diamond, to the brilliant-cut diamond shoulders and tapered band. *Total diamond weight 0.60ct, stamped to band, estimated I-J colour, P2-P3 clarity. Hallmarks for London. Weight 3gms. £240-340*

309



A mid 20th century 18ct gold diamond single-stone ring. The old-cut diamond, weighing 1.70cts, to the ridged shoulders and plain band. *Diamond estimated tinted colour, SI clarity. Later hallmarks for London, 2014. Weight 2.8gms. £800-1,200*

310

Two chains. To include a 9ct gold belcher-link chain, together with a further belcher-link chain, each with spring clasp. *One with hallmarks for Sheffield. Lengths 40 to 50cms. Total weight 10gms. £100-150*



***315**



A pair of sapphire and diamond cluster ear studs. Each designed as an oval-shape sapphire, within a brilliant-cut diamond surround. *Total sapphire weight 0.58ct, total diamond weight 0.13ct, each stamped to mount. Length 0.7cm. Weight 1.8gms. £340-440*

311

A diamond single-stone ring. The brilliant-cut diamond, to the tapered shoulders and plain band. *Estimated diamond weight 0.60ct, J-K colour, SI clarity. Weight 2.6gms. £360-460*



316

An 18ct gold diamond cross pendant. Set throughout with brilliant-cut diamonds, to the bifurcated surmount. *Estimated total diamond weight 0.90ct. Hallmarks for Sheffield, partially illegible. Length 2.7cms. Weight 2.8gms. £100-150*



312

A sapphire and diamond hinged bangle. The square-shape sapphire line, to the single-cut diamond border and plain half-bangle. *Estimated total diamond weight 0.45ct. Inner diameter 6.2cms. Weight 14.8gms. £300-400*



317

An early 20th century 15ct gold garnet and split pearl brooch. Of openwork design, the circular-shape garnet quatrefoil, centrally set to the split pearl spaced line, all within a shaped halo. *Length 4.1cms. Weight 3.2gms. £50-80*



313

A gem-set spider pendant. The stylised spider, with circular-shape green gem line detail, suspended from a surmount loop. *Abdomen gem deficient. Foreign marks, illegible. Length 4.2cms. Weight 4.7gms. £80-120*



318

Two diamond and gem-set rings. To include a 9ct gold oval-shape garnet and single-cut diamond cluster ring, together with a reconstituted turquoise cabochon and single-cut diamond three-stone ring. *One with hallmarks for Birmingham. Total weight 3.4gms. £40-60*



314

An 18ct gold diamond single-stone ring. The brilliant-cut diamond, within a square-shape surround, to the tapered shoulders and plain band. *Diamond weight 0.15ct, stamped to band, estimated I-J colour, P2 clarity. Hallmarks for Birmingham. Weight 2.8gms. £60-90*



319

A 9ct gold colour treated diamond and diamond crossover ring. Of asymmetric design, the three brilliant-cut colour treated blue diamond clusters, to the brilliant-cut diamond two-row asymmetric sides. *Estimated total diamond weight 1.10cts. Weight 3.8gms. £200-300*



320

A diamond dress ring. The scrolling, crossover bands, with brilliant-cut diamonds inset. *One diamond deficient. Estimated total diamond weight 0.40ct. Weight 8.7gms. £150-200*

**325**

A platinum diamond three-stone ring. The brilliant-cut diamonds, to the tapered shoulders and plain band. *Estimated total diamond weight 0.60ct, I-J colour, P1-P2 clarity. Hallmarks for Birmingham. Weight 2.8gms. £100-150*

**321**

A 9ct gold diamond band ring. The brilliant-cut diamond line, within a channel setting, to the tapered band. *Total diamond weight 0.20ct, stamped to band. Hallmarks for Sheffield. Weight 1.9gms. £40-60*

**326** ✕

A selection of three gem-set pendants. To include a 9ct gold glass-filled ruby and diamond cluster pendant, a tanzanite cross pendant, together with a glass-filled ruby and diamond point pendant, each with chain. *Two with hallmarks for 9ct gold. Length of pendants 1.6 to 2cms. Length of chains 39 to 46cms. Total weight 6.2gms. £70-100*

**322**

A 9ct gold diamond dress ring. The openwork crossover bands, with brilliant-cut diamond scrolling line detail. *Total diamond weight 0.11ct, stamped to band. Hallmarks for London. Weight 2.2gms. £40-60*

**327**

A mid 20th century platinum and 18ct gold diamond five-stone ring. The graduated old-cut diamond line, to the plain band. *Estimated total diamond weight 0.20ct. Weight 2.9gms. £80-120*

**323**

A sapphire and diamond hinged bangle. The front designed as a series of circular-shape sapphires, with brilliant-cut diamond double spacers, to the plain half-bangle. *Estimated total diamond weight 0.15ct. Inner diameter 5.6cms. Weight 11.5gms. £120-180*

**328**

Two 9ct gold gem-set pendants. Each of circular-shape outline, to include an early 20th century scrolling floral pendant suspending a central mother-of-pearl drop, together with a seed pearl scrolling foliate motif pendant, may be worn as a brooch. *One with hallmarks, indistinct. Diameters 2.5 and 2.7cms. Total weight 5.4gms. £70-100*

**324**

An 18ct gold diamond full-circle eternity ring. The brilliant-cut diamond line, with chevron detail and bar spacer. *Estimated total diamond weight 1.15cts. Hallmarks for Birmingham. Weight 5.1gms. £220-320*

**329**

An early 20th century 18ct gold diamond five-stone ring. The rose-cut diamond line, to the scrolling gallery and plain band. *Hallmarks for Birmingham, 1918. Weight 2.4gms. £70-100*



330



A topaz and diamond foliate bracelet. The oval-shaped blue topaz links, each with diamond accent scrolling foliate side, to the partially concealed clasp. *Hallmarks for London. Length 18.3cms. Weight 7.9gms. £80-120*

331

An 18ct gold diamond three-stone ring. The brilliant-cut diamonds, to the tapered shoulders and plain band. *Total diamond weight 0.50ct, stamped to band, estimated H-J colour, P1-P2 clarity. Hallmarks for London. Weight 3.4gms. £180-260*



335

A 14ct gold diamond single-stone crossover ring. The brilliant-cut diamond collet, to the asymmetric sides and plain band. *Estimated diamond weight 0.15ct. Hallmarks for London, 2014. Weight 2.9gms. £60-90*



332

A 14ct gold diamond single-stone ring. The brilliant-cut diamond collet, to the tapered shoulders and plain band. *Estimated diamond weight 0.15ct, J-K colour, VS1-VS2 clarity. Hallmarks for Birmingham. Weight 2.4gms. £50-80*



336 ✕

Two 9ct gold gem-set cluster rings. To include an oval opal cabochon and circular-shape ruby floral cluster ring, together with a circular-shape aquamarine cluster ring. *Hallmarks for London, 2000 and Birmingham, 2001. Weight 6.8gms. £60-90*



333



A quartz brooch. The rectangular-shaped yellow-green quartz, within an openwork Greek-key surround. *Length 3.4cms. Weight 16.1gms. £100-150*

337

An emerald and diamond full-circle eternity ring. The alternating square-shaped emerald and single-cut diamond line, to the plain sides. *One emerald deficient. Estimated total diamond weight 0.30ct. Ring size L. Weight 2.5gms. £90-140*



334

A 9ct gold diamond half-circle eternity ring. The brilliant-cut diamond line, inset to the plain band. *Estimated total diamond weight 1ct, H-J colour, P1-P3 clarity. Hallmarks for Birmingham, 2012. Weight 7.1gms. £150-200*



338

A 9ct gold diamond single-stone ring. The brilliant-cut diamond, to the chevron-shaped band. *Estimated diamond weight 0.20ct, J-K colour, SI1-SI2 clarity. Hallmarks for Birmingham. Weight 3gms. £70-100*



339

An early 20th century 9ct gold necklace. Designed as a series of fancy-links, to the push-piece clasp. Length 57cms. Weight 9.1gms. £70-100

344

An 18ct gold tourmaline, citrine and diamond dress ring. The circular-shape green tourmaline and circular-shape citrine, to the graduated brilliant-cut diamond shoulders. Estimated total diamond weight 0.20ct. Hallmarks for London, 2007. Weight 3.8gms. £260-360

340

A 9ct gold diamond pendant. Of openwork design, comprising a series of open triangles with brilliant-cut diamond accent and rectangular-shape surround, suspended from a belcher-link chain. Estimated diamond weight 0.30ct, H-I colour, SI clarity. Hallmarks and import marks for Birmingham. Length of pendant 3.1cms. Length of chain 60.5cms. Weight 11.4gms. £240-340

345

A 9ct gold diamond single-stone ring. The brilliant-cut diamond, to the tapered shoulders and plain band. Estimated diamond weight 0.15ct. Hallmarks for Sheffield. Weight 1.9gms. £40-60

341

A 14ct gold diamond dress ring. Designed as a brilliant-cut diamond three-row stepped panel, to the tapered band. Estimated total diamond weight 1ct. Hallmarks for London, 2014. Weight 4.3gms. £150-200

346

Two 18ct gold gem-set rings. To include a single-cut diamond ring with textured shoulders and a sapphire and diamond cluster ring. Hallmarks for Birmingham, 1973 and 1977. Weight 7.4gms. £120-180

342

A diamond and gem-set brooch. The circular-shape paste, inset to the oval-shape onyx panel, within a diamond point openwork geometric surround. Length 4.4cms. Weight 9.2gms. £120-180

***347 ✕**

A ruby and diamond dress ring. The oval-shape ruby and graduated brilliant-cut diamond surround, to the similarly-cut diamond line sides and plain half-band. Weight of ruby 0.45ct. Total diamond weight 0.42ct. Weight 2.4gms. £440-640

343 ✕

An Edwardian 18ct gold ruby and diamond five-stone ring. The graduated circular-shape ruby line, with single-cut diamond spacers, to the scrolling sides and tapered band. Hallmarks for Birmingham, 1903. Weight 3.7gms. £70-100

348



An 18ct gold sapphire and diamond cluster ring. The marquis-shape sapphire, within a brilliant-cut diamond surround, to the grooved shoulders and plain band. *Estimated total diamond weight 0.40ct. Hallmarks for Sheffield, 1977. Weight 4.4gms. £180-260*

352



A 9ct gold diamond single-stone ring. The brilliant-cut diamond, to the tapered shoulders and plain band. *Total diamond weight 0.10ct, stamped to band. Import marks for London, 1998. Weight 1.2gms. £30-50*

353



An 18ct gold diamond single-stone ring. The brilliant-cut diamond, to the tapered shoulders and plain band. *Diamond weight 0.50ct, stamped to band, estimated L-tinted colour, SI clarity. Hallmarks for Birmingham. Weight 2.7gms. £300-400*

349



A 9ct gold diamond three-stone ring. The brilliant-cut diamonds, each within an illusion setting, to the tapered shoulders and plain band. *Estimated total diamond weight 0.25ct. Hallmarks for London. Weight 3.4gms. £70-100*

354



Two diamond and gem-set pendants. To include a pavé-set diamond heart pendant, together with an oval sapphire and brilliant-cut diamond curved bar pendant, each with integral fancy-link back-chain. *Estimated total diamond weight 0.25ct. Lengths 41 and 42cms. Weight 12gms. £120-180*

350



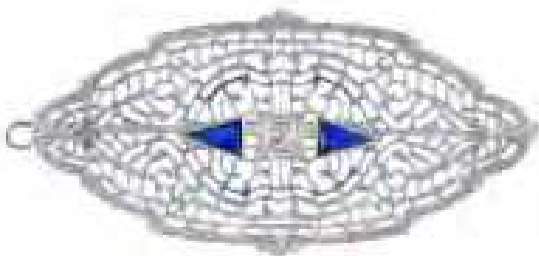
A 9ct gold diamond cluster ring. The square-shape and brilliant-cut diamond cluster, with brilliant-cut diamond channel-set shoulders, to the plain band. *Estimated total diamond weight 0.50ct. Hallmarks for London. Weight 2.7gms. £150-200*

355



An Edwardian 9ct gold charm bracelet, suspending later charms. To include an acorn, a zodiac charm, a heart locket and a base metal pineapple. *Hallmarks for padlock clasp for Birmingham, 1903. Length 19cms. Total weight 19.5gms. £180-260*

351



A diamond and synthetic sapphire brooch. Of openwork design, the scrolling geometric lattice with central circular-cut diamond and triangular-shape synthetic sapphire sides, to the scalloped surround. *Length 4.4cms. Weight 4.6gms. £70-100*

356



An 18ct gold diamond single-stone ring. The brilliant-cut diamond, to the tapered shoulders and plain band. *Diamond weight 1ct, stamped to band, estimated J-K colour, P1-P2 clarity. Hallmarks for Birmingham. Weight 3.7gms. £400-600*

357

An 18ct gold diamond three-stone ring. The brilliant-cut diamond line, to the crossover shoulders and plain band. *Estimated total diamond weight 0.25ct. Hallmarks for Sheffield, 2009. Weight 3.8gms. £120-180*



362

A 9ct gold diamond single-stone ring. The brilliant-cut diamond, to the tapered band. *Diamond weight 0.20ct, stamped to band. Hallmarks for Sheffield. Weight 2.3gms. £50-80*



358

A charm bracelet. The curb-link chain, suspending fourteen charms, to include a horseshoe, a bell and a guitar, to the heart-shape padlock clasp. *Six with hallmarks for 9ct gold. Length 18.5cms. Total weight 43.2gms. £400-600*



363

A diamond single-stone ring. The old-cut diamond, star-set within a square panel, to the 22ct gold replacement band. *Total weight 1.5gms. £40-60*



359

A diamond single-stone pendant. The brilliant-cut diamond collet, within a tear-drop surround, to the tapered surmount. *Estimated diamond weight 0.40ct. Length 2.2cms. Weight 2.2gms. £80-120*



364

A diamond panel bracelet. Designed as a series of brilliant-cut diamond lines, to the partially concealed clasp. *Total diamond weight 1ct, stamped to clasp. Length 17.9cms. Weight 5.5gms. £150-200*



360

A diamond seven-stone ring. The old and circular-cut diamond line, to the tapered shoulders. *Estimated total diamond weight 1ct. Weight 3.4gms. £100-150*



365 ✕

Two early 20th century 15ct gold brooches and a loose diamond. To include a turquoise cabochon wishbone brooch and a cushion-shape ruby and split pearl brooch, together with a rectangular-cut diamond weighing 0.31cts. *Diamond estimated I-J colour, P1-P2 clarity. One with hallmarks for Chester, 1897. Lengths 4 and 3.8cms. Total weight 5.1gms. £100-150*



361

An 18ct gold diamond half-circle eternity ring. The square-shape diamond line, within a channel setting, to the tapered half-band. *Estimated total diamond weight 0.25ct. Hallmarks for Edinburgh. Weight 2.1gms. £80-120*



366

A sapphire and diamond line bracelet. Comprising a series of circular-shape sapphires, with brilliant-cut diamond spacers, to the partially concealed clasp. *Estimated total diamond weight 0.40ct. Length 18.3cms. Weight 12.6gms. £260-360*



367

An 18ct gold diamond single-stone ring. The brilliant-cut diamond, to the tapered shoulders and plain band. *Estimated diamond weight 0.50ct, K-L colour, P1 clarity. Hallmarks for Birmingham, 1990. Weight 3.6gms. £200-300*



372

A 9ct gold diamond half-circle eternity ring. Designed as a brilliant-cut diamond illusion-set line, inset to the tapered band. *Estimated total diamond weight 0.15ct. Hallmarks for London. Weight 3.4gms. £60-90*



368



A mid 20th century hinged bangle. Designed as a series of three-row bars, with brick-link spacers, to the push-piece clasp. *Inner diameter 6.1cms. Weight 9.9gms. £100-150*

373

An 18ct gold diamond single-stone ring. The brilliant-cut diamond, with brilliant-cut diamond channel-set shoulders, to the plain band. *Principal diamond estimated weight 0.30ct, I-J colour, SI2-P1 clarity. Hallmarks for Birmingham, 1993. Weight 3.1gms. £120-180*



369

A 14ct gold diamond single-stone ring. The brilliant-cut diamond, to the plain band. *Estimated diamond weight 0.45ct, K-L colour, P1 clarity. Hallmarks for London, 2014. Weight 3.8gms. £150-200*



374

An 18ct gold diamond single-stone ring. The square-shape diamond, to the tapered shoulders and plain band. *Diamond weight 0.50ct, engraved to band, estimated H-I colour, P1 clarity. Hallmarks for London. Weight 2.7gms. £150-200*



370

Two gold turquoise band rings. To include a mid Victorian 9ct gold turquoise cabochon ring, together with a gold turquoise cabochon scroll and line band ring with textured sides and 15ct gold replacement band. *AF. Hallmarks for Birmingham, 1868. Replacement band with hallmarks for Birmingham, 1900. Total weight 3.5gms. £70-100*



375

A 9ct gold diamond line bracelet. Designed as a series of brilliant-cut diamonds, with bar-link spacers, to the push-piece clasp. *Total diamond weight 2ct, stamped to clasp. Hallmarks for Birmingham. Length 19cms. Weight 15gms. £260-360*



371



A pair of tourmaline ear studs and a peridot brooch. The ear studs each designed as a circular-shape tourmaline collet, with the circular-shape peridot bar brooch. *Diameter of ear studs 5.6mms. Length of brooch 3.9cms. Weight 3gms. £30-50*

376 ✕

A 1930s 18ct gold ruby and diamond five-stone ring. The alternating circular-shape ruby and old-cut diamonds, to the scroll gallery and plain band. *Estimated total diamond weight 0.10ct. Hallmarks for Chester, 1932. Weight 5.2gms. £150-200*



377

A diamond single-stone ring. The brilliant-cut diamond, to the tapered shoulders and plain band. *Estimated diamond weight 0.55ct, J-K colour, P1 clarity. Weight 2.5gms. £220-320*



382

An 18ct gold diamond cluster ring. The square-shape diamond panel, to the similarly-cut diamond channel shoulders, and plain half-band. *Estimated total diamond weight 0.60ct. Hallmarks for Birmingham. Weight 3.7gms. £120-180*



378

Two gem-set and diamond rings. To include a 14ct gold oval-shape tanzanite three-stone ring with diamond sides, together with an oval-shape emerald five-stone ring with single-cut diamond border. *Estimated total diamond weight 0.20ct. One with hallmarks for Birmingham. Weight 5.1gms. £120-180*

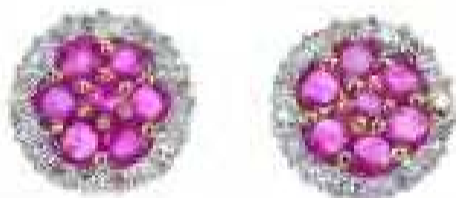


383

An 18ct gold sapphire and diamond ring. The graduated circular-shape sapphire line, with scrolling terminals and single-cut diamond sides. *Estimated total diamond weight 0.20ct. Hallmarks for London, 1975. Weight 7.1gms. £180-260*



379 ✕



A pair of 9ct gold ruby and diamond ear studs. Each designed as a circular-shape ruby floral cluster, within a single-cut diamond surround. *Estimated total diamond weight 0.15ct. Hallmarks for Birmingham. Diameter 0.9cms. Weight 1.7gms. £50-80*

384

An 18ct gold diamond single-stone ring. The brilliant-cut diamond collet, to the tapered shoulders and plain band. *Estimated diamond weight 0.40ct, I-J colour, SI clarity. Hallmarks for London, 1995. Weight 2.5gms. £240-340*



380

Two 18ct gold diamond single-stone rings. The first designed as an illusion set brilliant-cut diamond, to the trifurcated shoulders, the second designed as a brilliant-cut diamond collet, to the plain band. *Estimated total diamond weight 0.20ct. Hallmarks for London. Weight 5.8gms. £100-150*



381

An 18ct gold diamond five-stone ring. The brilliant-cut diamond line, to the plain band. *Estimated total diamond weight 0.35ct. Hallmarks for London, 2014. Weight 4.2gms. £120-180*



385

An 18ct gold diamond floral brooch. The textured flowers and single-cut diamond foliate accents, gathered by a single-cut diamond ribbon. *Estimated total diamond weight 0.20ct. Import marks for London, partially illegible. Length 4.8cms. Weight 11.5gms. £250-300*



386



A 9ct gold key pendant. Designed as a key embossed with the number 18. *Hallmarks for London, partially indistinct. Length 3.7gms. Weight 3.1gms. £30-50*

391



Two gem-set rings. To include a late Victorian synthetic ruby and split pearl dress ring, together with a synthetic ruby and old-cut diamond trefoil dress ring. *One with hallmarks for Chester, 1899. Total weight 3.6gms. £50-80*

387



A 9ct gold amethyst and diamond ring. The square-shape amethyst, within a single-cut diamond surround, to the tapered shoulders. *Hallmarks for Birmingham. Weight 2.2gms. £60-90*

392



An 18ct gold diamond single-stone ring. The brilliant-cut diamond, to the tapered shoulders and plain band. *Estimated diamond weight 0.30ct, H-I colour, SI2-P1 clarity. Import marks for Sheffield, 1989. Weight 2.5gms. £150-200*

388



Two gem-set rings. To include a 14ct gold oval-shape tanzanite and single-cut diamond floral cluster ring, together with a circular-shape garnet full-circle eternity ring. *One with hallmarks for Birmingham. Ring size N. Total weight 7.4gms. £120-180*

393



A diamond half-circle eternity ring. The brilliant-cut diamond line, to the slightly tapered band. *Estimated total diamond weight 0.15ct. Weight 2.9gms. £70-100*

389



An 18ct gold emerald and diamond cluster ring. The oval-shape emerald, within a single-cut diamond illusion surround, to the plain band. *Hallmarks for Birmingham, 1972. Weight 3.2gms. £90-140*

394



A turquoise single-stone ring. The oval turquoise cabochon, within a plain border, to the tapered band. *Length 3cms. Weight 6gms. £60-90*

390



An 18ct gold diamond single-stone ring. The brilliant-cut diamond, to the tapered shoulders and plain band. *AF. Estimated diamond weight 0.35ct, L-tinted colour, VS clarity. Hallmarks for Sheffield, 2002. Weight 2.6gms. £200-300*

395



An 18ct gold diamond band ring. The brilliant-cut diamonds, inset at intervals to the plain band. *Estimated total diamond weight 0.15ct. Hallmarks for Birmingham. Weight 4.3gms. £70-100*

396

A diamond cluster ring. The old-cut diamond, to the similarly-cut diamond surround with old-cut diamond spacers. *Estimated total diamond weight 0.80ct. Weight 2.7gms. £500-700*



401

An 18ct gold diamond two-row ring. The brilliant-cut diamond lines, to the bifurcated band. *Estimated total diamond weight 0.15ct. Hallmarks for Birmingham. Weight 4gms. £150-200*



397

A late Victorian 15ct gold diamond buckle ring. The old-cut diamond star, to the buckle and plain band. *Estimated total diamond weight 0.10ct. Hallmarks for Chester, 1880. Weight 5.5gms. £100-150*



402

An 18ct gold diamond single-stone ring. The brilliant-cut diamond, to the tapered shoulders and plain band. *Estimated diamond weight 0.25ct, H-I colour, SI clarity. Hallmarks for Birmingham, 1990. Weight 2.2gms £80-120*



398

A 9ct gold diamond single-stone ring. The square-shape diamond, to the slightly tapered band. *Diamond weight 0.25ct, stamped to band, estimated I-J colour, P1 clarity. Hallmarks for Birmingham. Weight 2.2gms. £50-80*



403

An early 20th century 18ct gold diamond five-stone ring. The graduated single-cut diamond line, to the scrolling gallery and plain band. *Estimated total diamond weight 0.10ct. Hallmarks for Chester, 1918. Weight 3.2gms. £80-120*



399

A 9ct gold peridot and diamond cluster ring. The oval shape peridot, within a single-cut diamond surround, to the tapered shoulders. *Hallmarks for Birmingham. Weight 1.5gms. £50-80*



404

A diamond single-stone ring. The brilliant-cut diamond, raised to the spiral-grooved band. *Estimated diamond weight 0.65ct, J-K colour, VS2-SI1 clarity. Weight 4.6gms. £540-740*



400

An 18ct gold diamond shaped band ring. The brilliant-cut diamond curved line, to the plain band. *Estimated total diamond weight 0.75ct, H-J colour, SI2-P1 clarity. Hallmarks for Birmingham. Weight 3.1gms. £150-200*



405

A 14ct gold amethyst single-stone pendant. The oval amethyst cabochon, within a bead swirl border, to the scroll surmount. *Length 4.5cms. Import marks for Birmingham, 1971. Weight 4.8gms. £70-100*



406



A pair of aquamarine and diamond ear pendants. Each designed as a pear-shape aquamarine, within a brilliant-cut diamond surround, suspended from a similarly-cut diamond pear-shape surmount. *Estimated total aquamarine weight 3cts. Estimated total diamond weight 0.90ct. Length 2.2cms. Weight 5.4gms. £900-1,400*

410



A 9ct gold diamond ring. The brilliant-cut diamond line, to the grooved sides and shoulders. *Estimated total diamond weight 0.30ct. Hallmarks for Birmingham. Weight 4.2gms. £80-120*

411



Two pendants. To include a love spoon pendant, together with a Saint Christopher openwork pendant, each suspended from a fancy-link chain. *Length of pendants 3.6 and 3.7cms. Lengths of chains 43.5 and 69.7cms. Weight 18.5gms. £150-200*

407

A selection of four pairs of gem-set earrings. To include a pair of cultured pearl ear pendants, a pair of oval-shape sapphire ear studs, together with two further pairs of earrings. *Lengths 0.3 to 1.6cms. Weight 8.2gms. £150-200*



412

DISNEY - a Mickey Mouse pendant. *Maker's marks for Disney. Length 2.3cms. Weight 2.2gms. £40-60*



408



A diamond bracelet. Of bi-colour design, comprising a series of brilliant-cut and square-shape diamond links, each within a geometric mount, to the knife-edge spacers and push-piece clasp. *Estimated total diamond weight 0.75ct. Length 17.6cms. Weight 7.5gms. £220-320*

413

A 9ct gold tanzanite and diamond ring. The rectangular-shape tanzanite, within a single-cut diamond surround, to the similarly-cut diamond shoulders. *Hallmarks for Birmingham. Weight 1.8gms. £60-90*



409

An 18ct gold diamond single-stone ring. The brilliant-cut diamond, to the asymmetrical shoulders and grooved band. *Estimated diamond weight 0.25ct, I-J colour, SI clarity. Hallmarks for Sheffield, 1997. Weight 6gms. £180-260*



414

A sapphire and diamond cluster ring. The oval-shape sapphire, within a brilliant-cut diamond border, to the tapered shoulders. *Estimated total diamond weight 0.35ct. Weight 3gms. £120-180*



415

An aventurine quartz and diamond brooch. Depicting the profile of a lady, with single-cut diamond accents, to the oval aventurine quartz surround with scalloped border. *Estimated total diamond weight 0.15ct. Length 5.4cms. Weight 37.9gms. £100-150*



420

A platinum diamond single-stone ring. The brilliant-cut diamond, within a spiral setting, to the plain band. *Diamond weight 0.33ct, engraved to band, estimated H-I colour, SI clarity. Hallmarks for Birmingham. Weight 2.8gms. £180-260*



416

A 9ct gold diamond crossover ring. The brilliant-cut diamond diagonal line, within a channel setting, to the crossover band. *Estimated total diamond weight 0.20ct. Hallmarks for Sheffield. Weight 4.1gms. £80-120*



421

Two 9ct gold gem-set rings. To include a garnet cluster ring, together with a circular-shape smoky quartz dress ring. *Hallmarks for London, 1972 and 1973. Weight 13.8gms. £100-150*



417

A 14ct gold diamond half-circle eternity ring. The square-shape diamond line, within a channel setting, to the plain half-band. *Estimated total diamond weight 0.50ct. Hallmarks for Birmingham. Weight 5.1gms. £150-200*



422 ✕

A 9ct gold ruby and diamond cluster ring. The oval-shape ruby, within a single-cut diamond surround, to the bifurcated shoulders. *Hallmarks for Birmingham. Weight 1.9gms. £40-60*



418

A mid Victorian 15ct gold emerald and split pearl cluster ring. The replacement square-shape emeralds and split pearls, to the scrolling shoulders and scroll engraved band. *Hallmarks for Birmingham, 1866. Weight 2.4gms. £100-150*



423

An early 20th century 15ct gold citrine bar brooch. The circular-shape citrine, to the plain bar. *Length 7.7cms. Weight 6.4gms. £70-100*



419

Two late 19th to early 20th century 9ct gold gem-set bar brooches. To include an operculum shell terminal brooch with scroll and bead sides, together with a baroque pearl brooch. *Pearl untested. Lengths 4 and 5cms. Weight 8.2gms. £50-80*



424

An 18ct gold diamond three-stone crossover ring. The brilliant-cut diamonds, to the asymmetric shoulders and plain band. *Estimated total diamond weight 1ct, H-I colour, P1-P2 clarity. Hallmarks for London. Weight 5gms. £560-760*



425

An early 20th century 18ct gold synthetic ruby and diamond three-stone ring. The circular-shape synthetic ruby and old-cut diamond sides, with rose-cut diamond spacers, to the scrolling gallery. *Principal diamonds estimated total weight 0.20ct. Weight 4.1gms. £120-180*



430

A selection of three 9ct gold diamond and gem-set rings. To include a triangular-shape tanzanite single-stone ring with diamond sides, a sapphire and diamond cluster ring, together with a blue topaz and diamond accent ring with asymmetric sides. *Estimated total diamond weight 0.15ct. Hallmarks for 9ct gold. Weight 5.8gms. £50-80*



426

A diamond brooch. Of geometric design, the circular-shape diamond curved lines, to the tapered sides. *Estimated total diamond weight 0.50ct. Length 5.6cms. Weight 5.8gms. £180-260*



431

A 9ct gold necklace. The graduated rope-twist chain, to the spring clasp. *Import marks for Birmingham, 1988. Length 42cms. Weight 13.2gms. £120-180*



427

A 9ct gold diamond single-stone ring. The brilliant-cut diamond, to the plain band. *Estimated diamond weight 0.25ct, I-J colour, P3 clarity. Hallmarks for Birmingham, 2000. Weight 6.1gms. £80-120*



432

A selection of four 9ct gold gem-set rings. To include an opal and tanzanite cluster ring, a citrine dress ring, an alternating oval-shape blue topaz and garnet five-stone ring, together with an amethyst and opal ring. *Hallmarks for 9ct gold. Weight 11.1gms. £90-140*



428

An 18ct gold diamond single-stone ring. The brilliant-cut diamond, to the extended claws and grooved shoulders. *Estimated diamond weight 0.35ct, J-K colour, SI clarity. Hallmarks for London, 1991. Weight 4.5gms. £150-200*



433

A 9ct gold signet ring. The oval panel, with textured border and tapered band. *Hallmarks for Birmingham, partially indistinct. Weight 3.8gms. £40-60*



429

A pair of tanzanite and diamond floral ear studs. Each designed as a single-cut diamond, within a circular-shape tanzanite petal surround, to the single-cut diamond scalloped halo. *Length 0.9cm. Weight 1.2gms. £40-60*



434

An 18ct gold diamond single-stone crossover ring. The brilliant-cut diamond, to the asymmetric sides and plain band. *Estimated diamond weight 0.20ct, H-I colour, VS clarity. Import marks for Sheffield, 1989. Weight 2gms. £80-120*



435

A pair of cultured pearl and diamond cluster ear studs. Each designed as a cultured pearl, within a brilliant-cut diamond surround. *Diameter 0.7cm. Weight 1.8gms. £70-100*

440

An 18ct gold diamond dress ring. The pavé-set diamond slightly tapered panel, inset to the tapered band. *Total diamond weight 0.50ct, stamped to band. Hallmarks for Sheffield. Weight 2.9gms. £100-150*

436

A pair of diamond ear clips. Each designed as a pavé-set diamond curved ribbon. *Estimated total diamond weight 0.40ct. Lengths 1.3cms. Weight 6.9gms. £300-400*

441

A 14ct gold coloured diamond and diamond dress ring. The alternating yellow diamond and diamond curved lines, to the plain band. *Estimated total diamond weight 1ct. Hallmarks for London. Weight 6.7gms. £300-400*

437

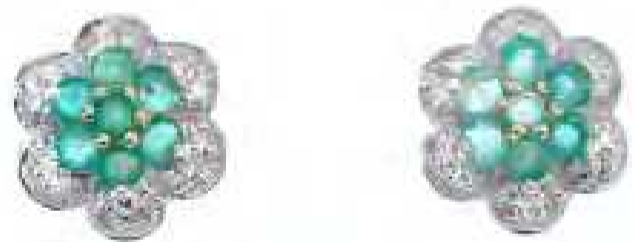
An emerald and diamond cluster ring. The oval-shape emerald, within a brilliant-cut diamond surround, to the plain band. *Estimated total diamond weight 0.20ct. Weight 2.4gms. £50-80*

442

A selection of three 9ct gold gem-set dress rings. To include an amethyst single-stone ring with scalloped surround, an oval moonstone cabochon single-stone ring with spiral rope-twist surround, together with a garnet floral cluster ring. *Hallmarks for 9ct gold. Weight 9.9gms. £90-140*

438

A 9ct gold amethyst and diamond bangle. The oval-shape amethyst line, within a single-cut diamond accent woven surround, to the plain half-bangle. *Estimated total diamond weight 0.10ct. Hallmarks for London. Inner diameter 6.1cms. Weight 9.7gms. £100-150*

443

A pair of emerald and diamond floral ear studs. Each designed as a circular-shape emerald cluster, within a single-cut diamond scalloped surround. *Diameter 1cm. Weight 1.3gms. £50-80*

439

An 18ct gold sapphire and diamond cluster ring. The circular-shape sapphire and brilliant-cut diamond surround, to the circular-shape sapphire sides and foliate shoulders. *Estimated total diamond weight 0.60ct. Weight 4.6gms. £150-200*

444 ✕

An early 20th century 18ct gold ruby and diamond ring. The graduated cushion-shape rubies, with old-cut diamond double spacers, to the scroll shoulders and plain band. *One diamond deficient. Weight 2.9gms. £80-120*

445

An 18ct gold diamond three-stone ring. The slightly graduated brilliant-cut diamond diagonal line, to the bifurcated sides and tapered band.

Estimated total diamond weight 0.50ct, H-J colour, SI2-P1 clarity. Hallmarks for Edinburgh. Weight 4.3gms. £120-180



450

A gem-set dress ring. Of crossover design, the triangular-shape orange cubic zirconia, to the rectangular-shape white sapphire shoulders and plain band. *Weight 5.4gms. £50-80*



446 ✕



A pair of 9ct gold ruby and diamond cluster ear studs. Each designed as an oval-shape ruby, within a single-cut diamond surround. *Hallmarks for Birmingham. Length 1.2cms. Weight 2.2gms. £60-90*

451 ✕



A selection of three gem-set pendants. To include a 9ct gold tanzanite cross, a ruby and diamond cluster pendant and an amethyst and diamond pendant, each suspended from a chain. *One with hallmarks for 9ct gold. Length of pendants 1.6 to 2.6cms. Length of chains 45cms each. Total weight 5.1gms. £60-90*

447

An early 20th century 18ct gold turquoise and diamond ring. The slightly graduated oval turquoise cabochons, with old-cut diamond spacers, to the plain band. *Hallmarks for Birmingham, letter date indistinct. Weight 3.6gms. £100-150*



452

An 18ct gold diamond half-circle eternity ring. The brilliant-cut diamond line, within a channel setting, to the tapered band. *Total diamond weight 0.18ct, stamped to the band. Hallmarks for Birmingham, 2003. Weight 4.5gms. £120-180*



448

A 9ct gold multi-gem floral ring. The marquise-shape gem-set flower, to include peridot, topaz, amethyst, citrine and garnet, to the single-cut diamond curved shoulders. *Hallmarks for Birmingham. Weight 2.4gms. £50-80*



453 ✕

A 9ct gold ruby and diamond cluster ring. The oval-shape ruby, within a single-cut diamond surround, to the plain band. *Hallmarks for Birmingham. Weight 1.4gms. £40-60*



449

A diamond half-circle eternity ring. The alternating brilliant and baguette-cut diamond line, to the tapered half-band. *Estimated total diamond weight 0.40ct. Weight 2.9gms. £100-150*



454

A 9ct gold diamond single-stone crossover ring. The brilliant-cut diamond, within an illusion setting, to the asymmetric shoulders and plain band. *Diamond weight 0.20ct, stamped to band, estimated I-J colour, P1 clarity. Hallmarks for Sheffield. Weight 2.1gms. £50-80*



455

Two 9ct gold diamond and gem-set cluster rings. To include a sapphire and diamond ring with chevron sides, together with an garnet and diamond ring with plain band. *Estimated total diamond weight 0.25ct. Hallmarks for London and Birmingham, 2008. Weight 5.6gms. £80-120*



460

An 18ct gold diamond single-stone ring. The pear-shape diamond, to the brilliant-cut diamond line and chevron-shape sides. *Principal diamond estimated weight 1ct, K-L colour, P2 clarity. Hallmarks for London, 2014. Weight 6.1gms. £660-860*



456

An 18ct gold diamond single-stone ring. The brilliant-cut diamond, to the grooved shoulders and tapered band. *Estimated diamond weight 0.25ct, H-I colour, SI clarity. Hallmarks for London, 2014. Weight 4.9gms. £120-180*



461

An 18ct gold diamond cluster ring. The pavé-set diamond marquise-shape cluster, to the scrolling shoulders. *Estimated total diamond weight 0.95ct. Hallmarks for Birmingham, 1998. Weight 4.9gms. £400-600*



457

A 9ct gold diamond floral cluster ring. The brilliant-cut diamond, within a single-cut diamond petal double surround. *Estimated total diamond weight 0.35ct. Import marks for London, 1973. Weight 3.3gms. £60-90*



462

Two 9ct gold diamond and gem-set pendants. To include a cross pendant with garnet and diamond central panel, together with an openwork heart with diamond accent, each suspended from a chain. *Three with hallmarks for 9ct gold. Length of pendants 1.5 and 3.6cms. Length of chains 45 and 46cms. Total weight 6.1gms. £70-100*



* 458

A diamond and sapphire panther ring. Designed as a pavé-set diamond mask and tapered side, to the polished open band, with circular-shape sapphire eyes and onyx nose. *Total diamond weight 1.86cts, stamped to band. Weight 6.8gms. £1,200-1,800*



459

A 9ct gold sapphire and diamond floral ring. The circular-shape sapphire cluster, within a single-cut diamond scalloped surround, to the tapered shoulders. *Hallmarks for Birmingham. Weight 2.4gms. £50-80*



463 ✕

An 18ct gold ruby and diamond pendant. Of openwork design, the brilliant-cut diamond and calibré-cut ruby cluster, within a brilliant-cut diamond double surround, suspended from a similarly-cut diamond surmount and belcher-link chain. *Estimated total diamond weight 0.30ct. Hallmarks for London, 2003 and London. Length of pendant 1.9cms. Length of chain 42cms. Weight 3.9gms. £200-300*



464

An 18ct gold diamond single-stone ring. The square-shape diamond, to the tapered band. *Diamond weight 0.50ct, stamped to band, estimated J-K colour, P2 clarity. Hallmarks for London. Weight 2.7gms. £220-320*



469

An 18ct gold diamond single-stone ring. The brilliant-cut diamond, to the tapered band. *Estimated diamond weight 0.25ct, H-I colour, P2 clarity. Hallmarks for Birmingham. Weight 1gm. £50-80*



465

A diamond single-stone ring. The marquise-shape diamond, within a closed-back setting, to the asymmetric shoulders and plain band. *Estimated diamond weight 0.45ct, I-J colour, SI clarity. Weight 5.1gms. £200-300*



470

A diamond single-stone ring. The old-cut diamond, to the single-cut diamond scrolling shoulders. *Principal diamond estimated weight 0.55ct, J-K colour, P1 clarity. Weight 2gms. £220-320*



466

A diamond three-stone ring. The slightly graduated brilliant-cut diamond collets, to the tapered band. *Estimated total diamond weight 0.50ct. Weight 1.7gms. £70-100*



471

A mid 20th century cultured pearl and turquoise floral spray brooch. The cultured pearl and circular turquoise cabochon flowers, to the similarly-set stem and leaves, gathered by a ribbon. *One imitation split pearl replacement. French assay marks. Length 5.5cms. Weight 15.1gms. £200-300*



467 ✕

A selection of jewellery. To include a 1960s 18ct gold ruby textured bombé ring, a blue gem five-stone ring, together with two pairs of 9ct gold gem-set ear studs. *Three with hallmarks for 18 and 9ct gold. Total weight 13.3gms. £200-300*



472

A 9ct gold topaz dress ring. Designed as a series of circular-shape blue topaz, inset to the scrolling panel, to the curved band. *One topaz deficient. Hallmarks for London. Weight 5.5gms. £50-80*



468

An 18ct gold diamond half-circle eternity ring. The brilliant-cut diamond line, within a channel setting, to the tapered half-band. *Estimated total diamond weight 0.50ct. Hallmarks for London. Weight 3gms. £180-260*



473

An 18ct gold diamond half-circle eternity ring. The rectangular-shape diamond line, within a channel setting, to the tapered band. *Estimated total diamond weight 0.55ct. Hallmarks for Birmingham, 2013. Weight 2.5gms. £150-200*



474

A selection of four items of gem-set jewellery. To include a 1970s 9ct gold opal dress ring, a 9ct gold cultured pearl pendant, with two further rings. *Three with hallmarks for 9ct gold. Length of pendant 2.5cms. Length of chain 45cms. Total weight 10.1gms. £60-90*



479

Two heart design pendants. To include a 9ct gold brilliant-cut diamond intertwined heart pendant and a circular-shape cubic zirconia pendant of similar design. *One with hallmarks for Birmingham. Lengths 2.4 and 1.9cms. Weight of 9ct gold pendant 1.6gms. £30-50*



475

An 18ct gold diamond single-stone ring. The rectangular-shape diamond, to the tapered band. *Estimated diamond weight 0.35ct, Hallmarks for Birmingham. Weight 3.2gms. £120-180*



480

An early 20th century 18ct gold sapphire and diamond five-stone ring. The graduated circular-shape sapphire line, with circular-cut diamond spacers, to the scrolling gallery and sides. *Hallmarks for Birmingham, 1912. Weight 3.6gms. £80-120*



476

A 9ct gold diamond ring. The four square-shape diamonds, to the tapered band. *Estimated total diamond weight 0.30ct, I-J colour, SI clarity. Hallmarks for 9ct gold partially rubbed. Weight 2.1gms. £50-80*



481

An early 20th century 18ct gold diamond five-stone ring. The slightly graduated old-cut diamond line, to the scrolling gallery and plain band. *Estimated total diamond weight 0.35ct. Weight 2.6gms. £100-150*



477

An early 20th century 9ct gold citrine bracelet. Designed as a series of circular-shape citrine collets, interspaced to the curb-link chain, with partially concealed clasp. *Length 18.5cms. Weight 8.5gms. £70-100*



482

An 18ct gold diamond single-stone ring. The brilliant-cut diamond, to the tapered band. *Estimated diamond weight 0.20ct, I-J colour, SI2-P1 clarity. Import marks for Sheffield, 1988. Weight 2.4gms. £70-100*



478

An 18ct gold diamond pendant. Comprising two brilliant-cut diamond and polished, interwoven scrolling lines, suspended from a flattened curb-link chain. *Estimated total diamond weight 0.10ct. Hallmarks for Sheffield, 2010 and London. Length of pendant 3.9cms. Length of chain 47cms. Weight 2.5gms. £50-80*



483

A platinum diamond half-circle eternity ring. The slightly graduated square-shape diamond line, within a channel setting, to the tapered band. *Diamond weight 0.25ct, stamped to band. Hallmarks for Birmingham. Weight 2.3gms. £120-180*



484



A sapphire and diamond bracelet. Designed as a series of square-shape sapphire bars, with brilliant-cut diamond scrolling terminals, to the partially concealed clasp. *Estimated total diamond weight 0.50ct. Length 18cms. Weight 17.8gms. £400-600*

485

A 14ct gold diamond single-stone ring. The brilliant-cut diamond and similarly-cut diamond chevron shoulders, to the chevron-shape stepped sides. *Principal diamond estimated weight 0.50ct, I-J colour, P2 clarity. Import marks for Birmingham, 1996. Weight 4.8gms. £150-200*



489

A 9ct gold diamond cluster ring. The brilliant-cut diamond cluster, to the similarly-cut diamond channel shoulders, and tapered band. *Total diamond weight 0.50ct, stamped to band. Hallmarks for Sheffield. Weight 2.9gms. £80-120*



486

An 18ct gold diamond three-stone ring. The brilliant-cut diamond line, to the tapered band. *Total diamond weight 0.33ct, stamped to band, estimated H-J colour, P1-P2 clarity. Hallmarks for London. Weight 3gms. £150-200*



490

Two gem-set dress rings. To include an early 20th century 18ct gold chrysoberyl three-stone ring, together with a cubic zirconia and sapphire cluster ring. *Total weight 7.7gms. £120-180*



487

A selection of jewellery items. To include a 9ct gold amethyst pendant, a 9ct gold topaz pendant, together with three pair of earrings. *Three with hallmarks for 9ct gold. Length of pendants 1.5 and 3.1cms. Length of earrings 1 to 4.7cms. Total weight 13.8gms. £80-120*



491

An 18ct gold diamond single-stone ring. The brilliant-cut diamond, to the similarly-cut diamond shoulders and plain band. *Estimated Principal diamond estimated weight 0.60ct, I-J colour, SI2-P1 clarity. Hallmarks for Birmingham. Weight 2.8gms. £300-400*



488

A platinum diamond three-stone ring. The slightly graduated brilliant-cut diamonds, to the tapered band. *Total diamond weight 0.50ct, stamped to band, estimated I-K colour, SI2-P1 clarity. Weight 4.9gms. £200-300*



492 ✕

A diamond and ruby owl pendant. The pavé-set rose-cut diamond owl mask, with circular-shape ruby eyes and surmount loop. *Length 1.4cms. Weight 1.5gms. £100-150*



493

An 18ct gold diamond single-stone crossover ring. The brilliant-cut diamond, to the asymmetric shoulders and plain band. *Diamond weight 0.25ct, stamped to band, estimated I-J colour, SI2-P1 clarity. Hallmarks for Birmingham, 1993. Weight 3.8gms. £120-180*



498

A selection of three 9ct gold rings. To include a 9ct gold oval and circular-shape garnet three-stone ring, a 9ct gold textured band ring, together with an oval red paste cabochon ring. *Hallmarks for 9ct gold. Weight 12gms. £100-150*



494

A diamond cuff. Designed as a series of brilliant-cut diamonds, each within a corner claw setting. *Estimated total diamond weight 1.30cts. Inner diameter 5.6cms. Weight 10.2gms. £300-400*



499

An 18ct gold diamond floral full-circle eternity ring. Comprising a repeating, brilliant-cut diamond scrolling floral motif. *Estimated total diamond weight 0.30ct. Hallmarks for London, 2008. Ring size N. Weight 5.5gms. £200-300*



495

An 18ct gold diamond single-stone ring. The brilliant-cut diamond, to the tapered band. *Estimated diamond weight 0.45ct, I-J colour, SI1-SI2 clarity. Hallmarks for London, 1991. Weight 2.6gms. £240-340*



500

A pair of diamond ear hoops. Each designed as a pavé-set diamond curved panel, to the plain half-hoop. *Estimated total diamond weight 0.65ct. Length 1.5cms. Weight 5.5gms. £150-200*



496

A selection of three 9ct gold gem-set rings. To include an opal and garnet ring, a garnet and tanzanite cluster ring, together with a grey-gem three-stone ring. *Hallmarks for 9ct gold. Weight 8gms. £70-100*



497



An 18ct gold diamond single-stone ring. The brilliant-cut diamond, within an illusion setting, to the engraved sides and plain band. *Accompanied by mini-report number 20020086, from AnchorCert, stating that the diamond is estimated 0.54ct, F colour, SI clarity. Hallmarks for Birmingham. Weight 4.2gms. £500-700*



501

An 18ct gold diamond pendant. Comprising two brilliant-cut diamond articulated lines, gathered at a point, suspended from integral multi-strand trace-link chains to the lobster clasp. *Estimated total diamond weight 0.55ct. Hallmarks for London. Length of pendant 3.5cms. Length of chain 42cms. Weight 11gms. £340-440*



502

A pair of cultured pearl and diamond foliate ear studs. Each designed as a cultured pearl, with scrolling side detail, to the brilliant-cut diamond highlights. *Length 1.5cms. Weight 3.8gms. £60-90*

507

A 9ct gold diamond single-stone ring. The brilliant-cut diamond, to the tapered band. *Estimated diamond weight 0.10ct, I-J colour, P1 clarity. Hallmarks for London. Weight 1.4gms. £40-60*

**503**

A 14ct gold diamond single-stone ring. The square-shape diamond, weighing 0.61ct, to the brilliant-cut diamond tapered shoulders and embossed band. *Accompanied by mini-report number 1119665547, dated 17th November 2010, from the Gemological Institute of America stating the principal diamond is I colour, VVS1 clarity. Hallmarks for London, 2014. Weight 3.4gms. £500-700*

**508**

Two early 20th century 9ct gold gem-set pendants. To include a garnet-top-doublet and seed pearl scrolling pendant, an openwork asymmetric turquoise cabochon pendant, together with chain. *Length of pendants 4.4 and 5cms. Length of chain 46cms. Total weight 5.5gms. £50-80*

**504**

An 18ct gold diamond single-stone ring. The brilliant-cut diamond, to the tapered band. *AF. Diamond weight 0.65ct, stamped to band, estimated I-J colour, P1 clarity. Hallmarks for London. Weight 4gms. £260-360*

**509**

A 9ct gold diamond single-stone ring. The brilliant-cut diamond, within an illusion setting, to the similarly-cut diamond tapered sides and plain band. *Estimated total diamond weight 0.35ct. Hallmarks for London. Weight 3.1gms. £60-90*

**505**

An 18ct gold diamond three-stone ring. The slightly graduated brilliant-cut diamond line, to the plain band. *Total diamond weight 1ct, stamped to band, estimated I-J colour, P1 clarity. Hallmarks for London. Weight 4.4gms. £300-400*

**510**

A selection of three gem-set rings. To include a 9ct gold circular-shape emerald half-circle eternity ring, a 9ct gold blue topaz and paste cluster ring, together with a pink gem cabochon and colourless paste decorative band ring. *Two with hallmarks for London and Birmingham. Total weight 14gms. £120-180*

**506**

An 18ct gold diamond single-stone ring. The brilliant-cut diamond semi-collet, to the diamond accent tapered sides and plain band. *Principal diamond estimated weight 0.50ct, K-L colour P1 clarity. Hallmarks for London. Weight 1.8gms. £180-260*

**511**

An 18ct gold diamond single-stone ring. The square-shape diamond to the tapered sides and plain band. *Estimated diamond weight 0.50ct, I-J colour, SI2-P1 clarity. Hallmarks for Birmingham, partially indistinct. Weight 3.9gms. £200-300*



512

A 9ct gold diamond single-stone ring. The brilliant-cut diamond, within an illusion setting, to the tapered sides and plain band. *Diamond weight 0.33ct, stamped to band, estimated J-K colour, P3 clarity. Hallmarks for Sheffield. Weight 2.5gms. £90-140*



517

An 18ct gold diamond single-stone crossover ring. The brilliant-cut diamond, to the asymmetric sides and plain band. *Estimated diamond weight 0.45ct, J-K colour, VS1-VS2 clarity. Hallmarks for Birmingham. Weight 2.4gms. £340-440*



513

A diamond single-stone ring. The brilliant-cut diamond, to the tapered sides and plain band. *Diamond weight 0.40ct, stamped to band, estimated J-K colour, VS1-VS2 clarity. Foreign marks. Weight 3.6gms. £240-340*



518

A platinum diamond single-stone ring. The brilliant-cut diamond collet, to the asymmetric sides and plain band. *Estimated diamond weight 0.30ct, H-I colour, SI1-SI2 clarity. Hallmarks for London. Weight 4.3gms. £150-200*



514 ✕

A selection of three 9ct gold gem-set cluster rings. To include two 1970s ruby and opal rings, together with a garnet and split pearl floral ring. *Hallmarks for 9ct gold. Weight 9.4gms. £80-120*



519

A synthetic spinel single-stone ring. The circular-shape blue synthetic spinel, to the plain band. *Weight 2.1gms. £30-50*



515



A diamond brooch. The single-cut diamond bar, with similarly-cut diamond crossbar and swag detail, to the circular and single-cut diamond fan terminals. *Estimated total diamond weight 0.45ct. Length 2.3cms. Weight 4.2gms. £120-180*

520

An Edwardian 9ct gold buckle ring. The stylised buckle, to the plain band. *Hallmarks for Chester, 1903. Weight 6gms. £60-90*



516

A platinum diamond single-stone ring. The rectangular-shape diamond, to the tapered band. *Diamond weight 0.33ct, stamped to band, estimated I-J colour, VS1-VS2 clarity. Hallmarks for Birmingham. Weight 4.5gms. £200-300*



521

An 18ct gold diamond and tourmaline cluster ring. The brilliant-cut diamond and marquise-shape green tourmaline floral cluster, within a brilliant-cut diamond surround, to the plain band. *Estimated total diamond weight 0.95ct. Import marks for Sheffield. Weight 5.3gms. £200-300*



522



An 18ct gold aquamarine and diamond ring. The circular carved aquamarine cabochon, to the brilliant-cut diamond chevron shoulders and tapered band. *Hallmarks for London, 1998. Weight 7gms. £150-200*

526



An 18ct gold diamond single-stone ring. The marquise-shape diamond, to the tapered band. *Diamond weight 0.75ct, stamped to band, estimated H-I colour, P2-P3 clarity. Hallmarks for Birmingham. Weight 2.9gms. £340-440*

527 ✕



A ruby and diamond cluster ring. The oval-shape ruby, within a single-cut diamond surround, to the bi-colour gallery and replacement half-band. *Estimated total diamond weight 0.10ct. Total weight 3.1gms. £70-100*

523 

A platinum diamond single-stone ring. The brilliant-cut diamond, to the tapered shoulders and plain band. *Accompanied by mini report number 20015600, from AnchorCert, stating that the diamond is estimated G colour, VS clarity. Hallmarks for Birmingham. Weight 3.9gms. £1,000-1,500*



528

A platinum diamond single-stone ring. The rectangular-shape diamond, to the tapered shoulders and plain band. *Estimated diamond weight 0.40ct, H-I colour, VS clarity. Hallmarks for London, 2007. Weight 4.2gms. £180-260*



*524

A sapphire and diamond half-circle eternity ring. The alternating circular-shape sapphire and brilliant-cut diamond line, to the bi-colour gallery and plain half-band. *Total sapphire weight 0.46ct, total diamond weight 0.30ct, each stamped to band. Weight 2.2gms. £340-440*



529

A diamond multi-gem dress ring. Comprising a fancy-shape peridot, amethyst and citrine, connected by a brilliant-cut diamond panel, to the tapered band. *Estimated total diamond weight 0.20ct. Weight 4.4gms. £100-150*



525 

An 18ct gold diamond single-stone ring. The square-shape diamond, to the tapered shoulders and plain band. *Accompanied by mini-report number 20020083, from AnchorCert, stating that the diamond is estimated 1.40cts, L colour, SI clarity. Hallmarks for Birmingham. Weight 3.9gms. £1,000-1,500*



530 

An 18ct gold diamond single-stone ring. The brilliant-cut diamond, to the tapered band. *Accompanied by mini-report number 20017386, from AnchorCert, stating estimated diamond weight 2.95cts, I colour, P3 clarity. Hallmarks for Sheffield. Weight 5gms. £1,200-1,800*



531

An 18ct gold diamond floral dress ring. The brilliant-cut diamond quatrefoil with bead centre and square-shape surround, to the similarly-designed graduated sides and tapered band. *Total diamond weight 0.25ct. Hallmarks for Birmingham, 2008. Weight 4.1gms. £100-150*



536

An 18ct gold diamond single-stone ring. The brilliant-cut diamond, to the similarly-cut diamond line tapered shoulders and plain band. *Principal diamond estimated weight 0.25ct, H-I colour, SI clarity. Hallmarks for London. Weight 2.7gms. £150-200*



532

An 18ct gold diamond single-stone ring. The brilliant-cut diamond, to the tapered shoulders and plain band. *Diamond weight 0.40ct, stamped to band, estimated J-K colour, P2 clarity. Hallmarks for London. Weight 3gms. £120-180*



537

An 18ct gold diamond single-stone dress ring. The brilliant-cut diamond, to the crossover design side and tapered band. *Estimated diamond weight 0.25ct, I-J colour, P1 clarity. Hallmarks for Birmingham, 2004. Weight 5gms. £180-260*



533

An 18ct gold diamond single-stone ring. The square-shape diamond, to the tapered shoulders and plain band. *Diamond weight 0.33ct, stamped to band, estimated I-J colour, SI clarity. Hallmarks for London. Weight 2.2gms. £150-200*



538

A diamond single-stone ring. The brilliant-cut diamond, within an illusion setting to the textured sides and plain band. *Weight 2.2gms. £50-80*



534

An 18ct gold diamond single-stone ring. The rectangular-shape diamond, to the tapered shoulders and plain band. *Diamond weight 0.25ct, stamped to band, estimated H-I colour, SI2-P1 clarity. Hallmarks for Birmingham. Weight 2.6gms. £80-120*



539

A sapphire and diamond cluster ring. The oval sapphire cabochon and brilliant-cut diamond scalloped cluster, to the circular-shape sapphire and brilliant-cut diamond scalloped three-row sides. *One sapphire deficient. Estimated total diamond weight 0.25ct. Weight 4.8gms. £120-180*



535

An early 20th century platinum and 18ct gold diamond three-stone ring. The slightly graduated single-cut diamonds, within a plain border, to the tapered band. *Weight 1.5gms. £50-80*



540

A 22ct gold band ring. *Hallmarks for Birmingham, 1949. Weight 2.6gms. £60-80*



541

A platinum diamond single-stone ring. The rectangular-shape diamond, to the tapered shoulders and plain band. *Diamond weight 0.33ct, stamped to band, estimated J-K colour, SI clarity. Hallmarks for Birmingham. Weight 4.2gms. £200-300*



546

A 9ct gold diamond dress ring. The brilliant-cut diamond, to the single-cut diamond asymmetric shoulders and tapered band. *Estimated total diamond weight 0.25ct, stamped to band, estimated I-J colour, P1-P2 clarity. Hallmarks for Birmingham. Weight 2.9gms. £60-90*



542

An 18ct gold diamond single-stone ring. The square-shape diamond, to the tapered shoulders and plain band. *Diamond weight 0.50ct, stamped to band, estimated K-L colour, SI clarity. Hallmarks for London, 2001. Weight 2.6gms. £150-200*



547

An emerald, diamond and enamel pendant. The circular-shape emerald, within a single-cut diamond scroll border, to the green enamel surround. *Length 3.1cms. Weight 7.6gms. £150-200*



543

An 18ct gold diamond single-stone ring. Of bi-colour design, the brilliant-cut diamond, to the tapered band. *Estimated diamond weight 0.30ct, J-K colour, P1 clarity. Hallmarks for London, 2000. Weight 4gms. £200-300*



548

An 18ct gold diamond band ring. Comprising two rows of alternating brilliant and baguette-cut diamonds, inset to the plain band. *Total diamond weight 0.25ct, stamped to band. Hallmarks for Sheffield. Weight 2.9gms. £80-120*



544

A 1960s 9ct gold diamond ring. Designed as a coiled snake, with brilliant-cut diamond crest. *Hallmarks for London, 1964. Weight 7.2gms. £70-100*



549

An 18ct gold diamond single-stone ring. The rectangular-shape diamond, to the tapered band. *Diamond weight 0.25ct, stamped to band, estimated H-I colour, P2 clarity. Hallmarks for Birmingham. Weight 2.7gms. £80-120*



545

An 18ct gold diamond single-stone ring. The brilliant-cut diamond, to the tapered shoulders and plain band. *Diamond weight 0.50ct, stamped to band, estimated H-I colour, P2 clarity. Hallmarks for London. Weight 2.4gms. £120-180*



550

A diamond dress ring. The baguette-cut diamond detail curved lines, slightly raised to the single-cut diamond panel and tapered half-band. *Total diamond weight 0.59ct, stamped to band. Weight 5gms. £150-200*



551

A mid 20th century 18ct gold sapphire and diamond cluster ring. The oval-shape sapphire, within a brilliant-cut diamond surround, to the tapered shoulders and plain band. *Estimated total diamond weight 0.35ct. Weight 3.5gms. £100-150*



556

A mid 20th century 18ct gold and platinum diamond three-stone ring. The three graduated circular and brilliant-cut diamonds, to the plain band. *Estimated total diamond weight 0.20ct. Weight 1.9gms. With associated case. £80-120*



552



A platinum diamond single-stone ring. The brilliant-cut diamond, to the similarly-cut diamond shoulders and plain band. *Principal diamond accompanied by mini report number 20021243, from AnchorCert, stating estimated weight 0.88cts, H colour, P2 clarity. Hallmarks for London, 2012. Weight 6.4gms. £500-700*



557

A sapphire and diamond five-stone ring. The alternating graduated circular-shape sapphire and brilliant-cut diamond line, to the scrolling gallery and plain band. *Estimated total diamond weight 0.20ct. Weight 2.9gms. £70-100*



553

A platinum diamond single-stone ring. The square-shape diamond, to the plain band. *Estimated diamond weight 0.40ct, H-I colour, SI clarity. Hallmarks for Birmingham. Weight 6.5gms. £180-260*



558

A platinum diamond single-stone ring. The brilliant-cut diamond, to the similarly-cut diamond line shoulders and tapered band. *Principal diamond estimated weight 0.40ct, I-J colour, P1 clarity. Hallmarks for London. Weight 5.4gms. £280-380*



554

An 18ct gold diamond single-stone ring. The brilliant-cut diamond, to the tapered shoulders and plain band. *Diamond weight 0.50ct, stamped to band, estimated K-L colour, SI2-P1 clarity. Hallmarks for London. Weight 3.9gms. £240-340*



559

An early 20th century 9ct gold gem-set spider brooch. The oval-shape aquamarine and circular-shape tourmaline body, to the angular legs, atop the plain bar. *Length 7.7cms. Weight 7.8gms. £80-120*



555

A 9ct gold diamond ring. Comprising two brilliant-cut diamond rows, to the stylised foliate shoulders and plain band. *Estimated total diamond weight 0.25ct. Hallmarks for London, 1983. Weight 1.6gms. £60-90*



560

A mid 20th century 18ct gold and platinum diamond single-stone ring. The brilliant-cut diamond, within an illusion mount, raised to the scalloped surround and bi-colour shoulders. *Diamond weight 0.20ct, stamped to band, estimated H-I colour, SI clarity. Weight 4gms. £100-150*



565

A diamond bracelet. Designed as a series of brilliant-cut diamonds, each within a heart-shaped surround, between openwork links, to the push-piece clasp. *Estimated total diamond weight 0.60ct. Length 17.5cms. Weight 13.2gms. £280-380*



561

A diamond pendant. The pavé-set oval-shape panel, suspended from a box-link chain. *Length of pendant 1.2cms. Length of chain 48cms. Weight 4.7gms. £60-90*



566

A platinum diamond cluster ring. The brilliant-cut diamond cluster, to the similarly-cut diamond shoulders and tapered band. *Total diamond weight 0.50ct, stamped to band, estimated H-I colour, P1-P2 clarity. Hallmarks for London. Weight 4.2gms. £150-200*



562

A 1920s 18ct gold diamond dress ring. The old-cut diamond line, with openwork scrolling sides, to the scroll shoulders and plain band. *Hallmarks for Chester, 1920. Weight 2.7gms. £60-90*



567

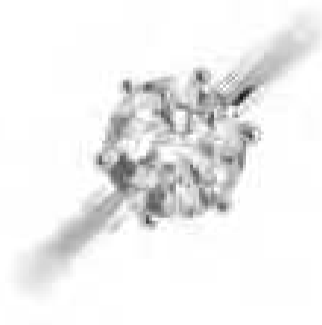
An 18ct gold sapphire and diamond cluster ring. The oval-shape sapphire, within a single-cut diamond surround, to the bi-colour mount and plain band. *Estimated total diamond weight 0.10ct. Hallmarks for London, 1967. Weight 3.1gms. £70-100*



563



A platinum diamond single-stone ring. The brilliant-cut diamond, to the tapered shoulders and plain band. *Accompanied by mini report number 20021236, from AnchorCert, stating estimated weight 1.17cts, K colour, I1 clarity. Hallmarks for Sheffield. Weight 5.1gms. £1,000-1,500*



568

A 9ct gold reconstituted turquoise three-stone ring. The three oval reconstituted turquoise cabochons, to the pear-shape openwork shoulders and plain band. *Hallmarks for London, 1976. Weight 3.5gms. £40-60*



564

A platinum single-stone diamond ring. The square-shape diamond, to the tapered band with inner brilliant-cut diamond accent. *Principal diamond 0.33ct, stamped to band, estimated I-J colour, SI1-SI2 clarity. Hallmarks for Birmingham. Weight 4.1gms. £220-320*



569

An 18ct gold diamond cluster ring. The baguette-cut diamond and similarly-cut diamond sides, within a brilliant-cut diamond surround. *Estimated total diamond weight 1.30cts. Hallmarks for London, 2001. Weight 5.3gms. £300-400*



570

An 18ct gold band ring. Hallmarks for Birmingham, 1991. Weight 6.5gms. £120-180



575

An 18ct gold diamond single-stone ring. The brilliant-cut diamond, to the similarly-cut diamond line shoulders and plain band. Principal diamond estimated weight 0.25ct, H-I colour, SI clarity. Hallmarks for Birmingham. Weight 2.8gms. £150-200



571

A pair of diamond earrings. Each designed as a brilliant-cut diamond, suspended from a brilliant-cut diamond collet surmount. Estimated total diamond weight 0.65ct, I-K colour, SI clarity. Length 0.8cm. Weight 1.7gms. £400-600



576

An 18ct gold emerald and diamond half-circle eternity ring. The alternating line of circular-shape emerald and brilliant-cut diamonds, each within a geometric mount, to the slightly tapered half-band. Hallmarks for London, 1977. Weight 3.3gms. £70-100



572



An 18ct gold diamond single-stone ring. The square-shape diamond, to the tapered band. Accompanied by mini report number 20020087, from AnchorCert, stating estimated weight 1ct, J-K colour, I1 clarity. Hallmarks for London. Weight 4.5gms. £540-740



577

A diamond cluster ring. The old-cut diamond, within a similarly-cut diamond scalloped surround, to the tapered shoulders. Estimated total diamond weight 0.60ct. Weight 3.3gms. £120-180



573

A diamond three-stone ring. The graduated brilliant-cut diamond line, to the bi-colour gallery and textured shoulders. Estimated total diamond weight 0.15ct. Weight 3.3gms. £80-120



578

A 1920s 22ct gold band ring and an early 20th century silver and 9ct gold paste ring. The first designed as a plain cushion-shape band measuring 3.5mms, the second set with three-colourless paste to the tapered band. One paste deficient. The first with hallmarks for Birmingham, 1926. Total weight 10gms. £180-260



574

A diamond single-stone ring. The square-shape diamond, to the brilliant-cut diamond line shoulders and plain band. Principal diamond estimated weight 0.25ct, I-J colour, SI clarity. Hallmarks for Birmingham. Weight 3.6gms. £150-200



579

A diamond two-stone ring. Of crossover design, the two brilliant-cut diamonds, to the asymmetric curved shoulders and plain band. Estimated total diamond weight 0.60ct, H-I colour, P1-P2 clarity. Weight 3.1gms. £260-360



580



An early 20th century 9ct gold sapphire and diamond bangle. The alternating graduated oval-shape sapphire and old-cut diamonds, each within a star mount, to the openwork bangle. *Inner diameter 5.5cms. Weight 9.6gms. £100-150*

584

A selection of four rings and a chain. To include a 9ct gold amethyst three-stone ring, a 9ct gold brick-link dress ring, an early 20th century 9ct gold paste and split pearl crescent ring, a band ring and rope-twist chain. *Two with hallmarks for 9ct gold. Length of chain 45cms. Total weight 13.2gms. £90-140*



585

An 18ct gold diamond single-stone ring. The rectangular-shape diamond, to the tapered shoulders and plain band. *Estimated diamond weight 0.30ct, H-I colour, SI clarity. Hallmarks for Sheffield. Weight 2.5gms. £120-180*



581



A six-band puzzle ring. Designed as a series of curved bands. *Weight 11.4gms. £120-180*

586

A 9ct gold garnet and diamond ring. The square-shape garnet, to the single-cut diamond line sides and plain half-band. *Hallmarks for London. Weight 3.4gms. £50-80*



582 ✕



A late Victorian 18ct gold ruby, diamond and paste ring. Of marquise-shape outline, the graduated cushion-shape ruby line, within an old-cut diamond and replacement paste surround, to the stylised floral shoulders and grooved band. *AF. Estimated total diamond weight 0.40ct. Hallmarks for Birmingham, 1887. Weight 5.5gms. £120-180*

587 ✕



Two 9ct gold gem-set rings. To include an oval-shape glass-filled ruby three-stone ring, together with a circular-shape garnet three-stone ring. *Hallmarks for Birmingham, 2010 and Birmingham. Weight 4.8gms. £50-80*

583



A pair of diamond earrings. Each designed as two brilliant-cut diamond curved lines, with bar spacers. *Estimated total diamond weight 1.10cts. Length 2.2cms. Weight 8.9gms. £240-340*

588



A diamond single-stone ring. The marquise-cut diamond, to the tapered baguette-cut diamond shoulders and plain band. *Principal diamond estimated weight 0.75ct, L-tinted colour, SI clarity. Weight 2.6gms. £260-360*

589

A late Victorian 18ct gold dress ring. The ridged centre, to the asymmetric shoulders and tapered band.
Hallmarks for Chester, 1899. Weight 5.3gms. £100-150



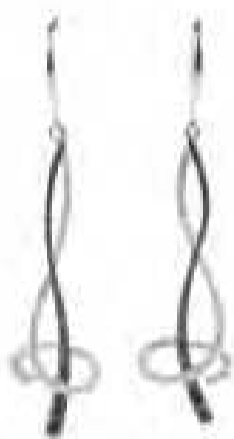
594 ✕

An early 20th century 18ct gold coral and split pearl wreath brooch. The circular coral cabochons alternating with split pearls. *Diameter 1.6cms. Weight 4.6gms. £80-120*



590

A pair of 18ct gold diamond and gem-set ear pendants. Each designed as two brilliant-cut diamond and circular-shape black gem interwoven, scrolling lines. *Estimated total diamond weight 0.40ct. Hallmarks for Birmingham. Length 4.6cms. Weight 3.4gms. £120-180*



595

An 18ct gold diamond single-stone ring. The brilliant-cut diamond, within a stirrup-shape setting, to the brilliant-cut diamond accent tapered band. *Estimated principal diamond weight 0.20ct, I-J colour, SI1-SI2 clarity. Hallmarks for Birmingham. Weight 2.4gms. £100-150*



591

A 9ct gold diamond single-stone ring. The brilliant-cut diamond, to the tapered shoulders and plain band. *Diamond weight 0.25ct, stamped to band, estimated J-K colour, P2-P3 clarity. Hallmarks for London. Weight 1.7gms. £50-80*



596 ✕

A selection of four brooches. To include an early 20th century 9ct gold split and seed pearl floral brooch, an oval jade cabochon bar brooch, a cultured pearl wreath brooch and an early 20th century paste bar brooch. *One paste deficient. Lengths 6.7 to 2.4cms. Total weight 17.1gms. £120-180*



592

A pair of emerald and diamond ear pendants. Each designed as a square-shape emerald and brilliant-cut diamond accent crescent, suspended from a tapered surmount and hook fitting. *Length 4.1cms. Weight 7.6gms. £300-400*



597

An 18ct gold diamond single-stone ring. The modified brilliant-cut diamond, to the single-cut diamond gallery and tapered band. *Diamond laser inscribed F6D79412 to girdle, corresponding to IGI report dated 9th November 2012, stating diamond weight 0.37ct, H colour, SI2 clarity. Hallmarks for London. Weight 3.3gms. £260-360*



593

A diamond cross pendant. The brilliant-cut diamond cluster, to the graduated baguette-cut diamond scrolling arms with brilliant-cut diamond sides. *One diamond deficient. Estimated total diamond weight 2.40cts. Length 3.9cms. Weight 8.7gms. £400-600*



598

An 18ct gold diamond floral full-circle eternity ring. Comprising a repeating, brilliant-cut diamond scrolling floral motif. *Estimated total diamond weight 0.35ct. Hallmarks for London, 2012. Ring size N. Weight 5.4gms. £200-300*



599

A mid 20th century 18ct gold cat's eye chrysoberyl single-stone ring. The oval cat's eye chrysoberyl cabochon collet, to the tapered band. *Weight 5.5gms. £100-150*



604

A platinum diamond single-stone ring. The brilliant-cut diamond, to the tapered shoulders and plain band. *Estimated diamond weight 0.30ct, H-I colour, SI clarity. Hallmarks for London, 1997. Weight 4.4gms. £180-260*



600

A 9ct gold paste cluster ring. The colourless paste stepped cluster, to the plain band. *Hallmarks for Birmingham, 1982. Weight 3.2gms. £100-150*



605

A 9ct gold diamond single-stone ring. The square-shape diamond, to the plain band. *Diamond weight 0.22ct, stamped to band, estimated J-K colour, P1 clarity. Hallmarks for London. Weight 1.8gms. £40-60*



601

A diamond cluster ring. Of bi-colour design, the pavé-set diamond circular-shape cluster, within a collet setting. *Total diamond weight 0.27ct, stamped to band. Weight 7.8gms. £180-260*



606

A 14ct gold diamond single-stone ring. The brilliant-cut diamond, within a shaped surround, to the ridged shoulders and tapered band. *Estimated diamond weight 0.60ct, I-J colour, VS clarity. Hallmarks for London, 2014. Weight 3.1gms. £340-440*



602

Two gem-set rings. To include a 1970s 9ct gold blue zircon three-stone ring, together with a diamond single-stone ring. *One with hallmarks for London, 1972. Total weight 4.7gms. £70-100*



607

An Edwardian 18ct gold stylised knot band ring. The textured stylised knot, to the ridged band. *Hallmarks for Birmingham, 1901. Weight 5.7gms. £120-180*



603

An 18ct gold diamond single-stone ring. The modified brilliant-cut diamond, to the single-cut diamond gallery and tapered band. *Diamond laser inscribed F6D78811 to girdle, corresponding to IGI report dated 8th November 2012, stating diamond weight 0.39ct, F colour, I1 clarity. Hallmarks for London. Weight 3.7gms. £220-320*



608

An 18ct gold amethyst and diamond crossover ring. The twin circular-shape amethyst, to the baguette-cut diamond asymmetric sides and plain band. *Estimated total diamond weight 0.25ct. Hallmarks for London, 2008. Weight 3.1gms. £150-200*



609

A platinum diamond single-stone ring. The rectangular-shape diamond, to the tapered band. *Estimated diamond weight 0.30ct, H-I colour, VS1-VS2 clarity. Hallmarks for London, 2005. Weight 4.8gms. £150-200*



614

A diamond cluster ring. The brilliant-cut diamond cluster, to the tapered shoulders and plain band. *Total diamond weight 0.75ct, stamped to band. Weight 3.8gms. £200-300*



*610

A diamond heart pendant. The brilliant-cut diamond heart-shape panel, within a tapered baguette and brilliant-cut diamond double surround, suspended from an integral belcher-link chain. *Estimated total diamond weight 0.25ct. Length of pendant 0.8cm. Length of chain 44cms. Weight 2.7gms. £300-400*



615

A diamond three-stone ring. The three brilliant-cut diamonds, to the baguette-cut diamond shoulders and plain band. *Estimated total diamond weight 1.15cts, principal diamonds estimated J-K colour, P1 clarity. Weight 4.3gms. £150-200*



611 ✕

An early 20th century 18ct gold diamond and ruby five-stone ring. The oval-shape rubies, with single-cut diamond double spacers, to the plain band. *Hallmarks for Birmingham, 1917. Weight 2.9gms. £70-100*



616

A lapis lazuli dress ring. The oval lapis lazuli cabochon collet, to the tapered shoulders and plain band. *Weight 4.6gms. £70-100*



612

An 18ct gold diamond cluster ring. The brilliant-cut diamond cluster, to the tapered band. *Estimated total diamond weight 1.80cts, L-tinted colour, SI2-P1 clarity. Hallmarks for London. Weight 4.5gms. £300-400*



617

An 18ct gold diamond single-stone ring. The heart-shape diamond, to the curved shoulders and plain band. *Estimated diamond weight 0.25ct, H-I colour, SI clarity. Hallmarks for London, 1989. Weight 2.6gms. £90-140*



613

A diamond dress ring. Of asymmetric design, the three brilliant and old-cut diamonds, within an old and single-cut diamond scrolling surround, to the tapered band. *Estimated total diamond weight 0.70ct. Weight 6gms. £150-200*



618

A diamond dress ring. The tapered baguette and brilliant-cut diamond marquise-shape concentric cluster, to the tapered shoulders. *Estimated total diamond weight 3.85cts. Weight 8.4gms. £340-440*



619

An Edwardian 18ct gold keeper ring. The sphere and woven design centre, to the tapered shoulders and plain band. *Hallmarks for Chester, 1901. Weight 4.9gms. £100-150*



624

A diamond two-row dress ring. The square-shape diamond channel-set lines, to the raised shoulders and tapered band. *Total diamond weight 0.60ct, stamped to band. Weight 4.5gms. £150-200*



620

A sapphire half-circle eternity ring. The square-shape sapphire line, inset to the tapered band. *Weight 3.2gms. £50-80*



625

An 18ct gold emerald and diamond ring. The pear-shape emerald and brilliant-cut diamond, each within a collet setting, to the scrolling shoulder and plain band. *Estimated diamond weight 0.20ct. Hallmarks for Dublin, 1995. Weight 6.8gms. £150-200*



621

A 14ct gold garnet and diamond dress ring. The cushion-shape garnet, inset to the brilliant-cut diamond raised shoulders, to the tapered band. *Hallmarks for Birmingham, partially indistinct. Weight 11.2gms. £180-260*



626

A pair of diamond and gem-set ear pendants. Each designed as a pear-shape aquamarine and circular-shape pink gem cluster, with brilliant-cut diamond surround and sides, suspending a series of three diamond and aquamarine fringe drops. *Estimated total diamond weight 1.20cts. Length 5.5cms. Weight 24.6gms. £240-340*



622

A diamond single-stone ring. The rectangular-shape diamond, with baguette-cut diamond sides, to the foliate shoulders and plain band. *Principal diamond estimated weight 0.30ct, I-J colour, VS clarity. Weight 4gms. £200-300*



627 ✕

An 18ct gold ruby and diamond cluster ring. The brilliant-cut diamond, within an alternating circular-shape ruby and brilliant-cut diamond double surround, to the tapered shoulders and plain band. *Estimated total diamond weight 0.45ct. Hallmarks for London, 1991. Weight 3.4gms. £120-180*



623

A sapphire and diamond floral pendant. The circular-cut diamond, within an oval-shape sapphire petal surround, suspended from a fancy-link chain. *Estimated diamond weight 0.10ct. Length of pendant 2.2cms. Length of chain 61cms. Weight 5gms. £90-140*



628 ✕

An 18ct gold ruby and diamond dress ring. The oval-shape ruby, to the single-cut diamond line sides, tapered shoulders and plain band. *Hallmarks for London. Weight 3.1gms. £70-100*



629

An 18ct gold diamond three-stone ring. Of crossover design, the three graduated brilliant-cut diamonds, to the curved shoulders and plain band. *Total diamond weight 1ct, engraved to band, estimated L-tinted colour, P1 clarity. Hallmarks partially indistinct. Weight 4.4gms. £200-300*



634

A 9ct gold diamond bracelet. Of bicolour design, the single-cut diamond line panels, with openwork rectangular-link spacers, to the push-piece clasp. *Estimated total diamond weight 0.30ct. Hallmarks for Birmingham. Length 17.4cms. Weight 10.8gms. £150-200*



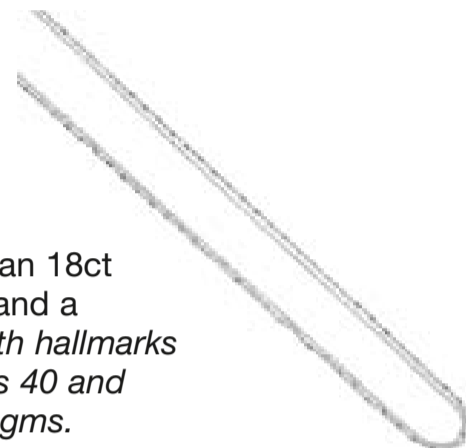
630

A 9ct gold garnet necklace and an owl pendant. The necklace designed as a rope-twist chain with oval-shape garnet accents, the 9ct gold pendant designed as an openwork owl, suspended from a box link chain. *Hallmarks for Birmingham and Sheffield. Length of pendant 3.4cms. Length of chains 39.7 and 46.5cms. Weight 14.7gms. £150-200*



635

Two chains. To include an 18ct gold belcher-link chain and a bead-link chain. *One with hallmarks for Birmingham. Lengths 40 and 45cms. Total weight 4.8gms. £100-150*



631

A diamond half-circle eternity ring. Designed as a series of nine old and circular-cut diamonds, to the plain half band. *Estimated total diamond weight 0.45ct. Weight 3.3gms. £90-140*



636

An 18ct gold diamond bracelet. The alternating brilliant-cut diamond and polished bars, with openwork spacers, to the lobster-claw clasp. *Estimated total diamond weight 0.40ct. Hallmarks for Edinburgh. Length 18.8cms. Weight 5.7gms. £120-180*



632

A diamond cross pendant. The brilliant-cut diamond cross, to the tapered surmount, suspended from a box-link chain. *Estimated total diamond weight 0.20ct. Length of pendant 2.1cms. Length of chain 45.5cms. Weight 2.9gms. £100-150*



637

An 18ct gold emerald and diamond cluster ring. The oval-shape emerald, within a brilliant-cut diamond surround, to the tapered band. *Estimated total diamond weight 0.25ct. Import marks for Birmingham, 1996. Weight 3.1gms. £80-120*



633

A diamond and emerald horseshoe ring. The rectangular-shape diamond collet, within a brilliant-cut diamond and circular-shape emerald double horseshoe, to the tapered band. *Principal diamond estimated weight 0.35ct. Weight 12.6gms. £280-380*



638

An 18ct gold diamond dress ring. The brilliant-cut diamond collet, within a brilliant-cut diamond openwork panel, to the raised border and grooved band. *Estimated total diamond weight 0.30ct. Hallmarks for London, 1984. Weight 6.1gms. £120-180*



643

A sapphire and diamond cluster ring. The rectangular-shape sapphire, within a brilliant and single-cut diamond surround, to the tapered shoulders and plain band. *Estimated total diamond weight 0.20ct. Weight 2.8gms. £120-180*



639 ✕

An early 20th century 18ct gold ruby and diamond five-stone ring. The circular-shape ruby and diamond point line, to the scrolling shoulders and plain band. *Hallmarks for Birmingham, 1919. Weight 2.2gms. £50-80*



644 📦

GEORG JENSEN - an 18ct gold smoky quartz ring. The oval-shape smoky quartz, within a foil-back setting, to the plain band. *AF. Maker's marks for Georg Jensen. Convention marks for Denmark. Weight 13gms. With maker's case. £180-260*



640

A diamond dress ring. Of bi-colour openwork design, the rose-cut diamond rectangular panel, to the diamond point shoulders and plain band. *Weight 12.5gms. £200-300*



645

A 9ct gold sapphire and diamond ring. The marquise-shape pink sapphire, with single-cut diamond triple sides, to the tapered shoulders and plain band. *Hallmarks for London. Weight 1.8gms. £30-50*



641 ✕

A diamond and ruby cluster pendant. The brilliant-cut diamond, within a circular-shape ruby and brilliant-cut diamond surround, to the plain surmount. *Estimated total diamond weight 0.35ct. Length 2.1cms. Weight 2.2gms. £90-140*



646

A mid 20th century 18ct gold and platinum synthetic ruby and diamond three-stone ring. The circular-shape synthetic ruby, to the old-cut diamond sides and tapered band. *Estimated total diamond weight 0.15ct. Weight 2.1gms. £50-80*



642

A diamond floral cluster ring. The brilliant-cut diamond, within a similarly-cut diamond scalloped surround, to the tapered band. *Estimated total diamond weight 0.30ct. Weight 2gms. £70-100*



647

An early 20th century platinum and 18ct gold diamond cluster ring. The single-cut diamond floral cluster, to the plain band. *Estimated total diamond weight 0.20ct. Weight 2.4gms. £120-180*



648

A mid 20th century 22ct gold and platinum band ring. Of bi-colour striped design, comprising two 18ct gold bands, interspaced with platinum lines. *Maker's marks for Charles Green & Son. Hallmarks for Birmingham, 1960. Weight 4.2gms. £100-150*



653

A diamond dress ring. Designed as a brilliant-cut diamond three-stone diagonal line with textured asymmetric shoulders, to the single-cut diamond chevron side. *Previously two rings, joined. Estimated total diamond weight 0.45ct. Total weight 3.8gms. £120-180*



649

An 18ct gold synthetic emerald and diamond ring. The oval-shape synthetic emerald, with brilliant-cut diamond line sides, to the tapered band. *Hallmarks for Sheffield. Weight 3.3gms. £90-140*



654

Two gem-set rings. To include a circular-shape blue zircon single-stone ring with openwork foliate sides, together with a circular-shape synthetic sapphire single-stone ring. *Weight 7.8gms. £70-100*



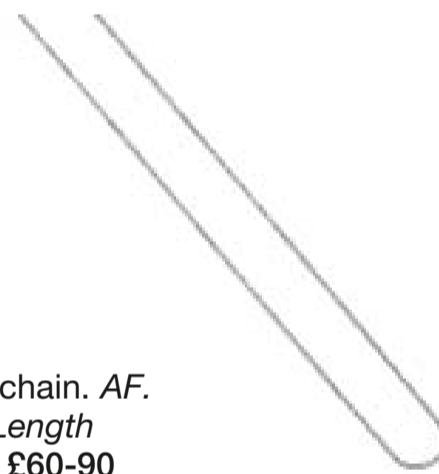
650

A 9ct gold diamond and paste dress ring. The oval-shape orange paste, with brilliant-cut diamond accents, to the extended claws and plain band. *Hallmarks for Sheffield. Weight 8.9gms. £90-140*



655

An 18ct gold foxtail-link chain. *AF. Hallmarks for Sheffield. Length 52cms. Weight 3.1gms. £60-90*



651

A 9ct gold synthetic emerald and diamond cluster ring. The cushion-shape synthetic emerald, to the single-cut diamond surround and shoulders. *Total diamond weight 0.26ct, stamped to band. Hallmarks for Birmingham. Weight 2.6gms. £60-90*



656

An early 20th century 9ct gold belcher-link guard chain. The faceted belcher-links, to the lobster clasp. *Length 140cms. Weight 18.3gms. £180-260*



652

A diamond three-stone ring. The brilliant-cut diamond stepped line, to the grooved sides. *Total diamond weight 2cts, stamped to band, estimated J-K colour, P2-P3 clarity. Weight 5.7gms. £360-460*



657

A dress ring. Designed as a shell, with grooved surface detail, to the tapered band. *Weight 6.8gms. £100-150*



658

A diamond bow ring. The two brilliant-cut diamonds, to the single-cut diamond scrolling ribbon sides and plain half-band. *Estimated total diamond weight 0.50ct, principal diamonds estimated H-I colour, P1 clarity. Weight 2.9gms. £400-600*



663

A band ring. *Weight 4.1gms. £80-120*



659

A colour treated diamond band ring. Designed as two off-set rows of brilliant-cut colour treated 'pink' diamonds, spaced to the plain band. *Estimated total colour treated diamond weight 0.20ct. Width 4mms. Ring size I. Weight 7.5gms. £180-260*



664 ✕

An 18ct gold ruby and diamond cluster ring. The square-shape ruby, within a brilliant-cut diamond scalloped surround, to the bifurcated shoulders and plain band. *Estimated total diamond weight 0.25ct. Hallmarks for Birmingham. Weight 3gms. £150-200*



660

An enamel watch pendant. The circular cream dial, with black Roman numerals, to the textured surround and foliate enamel reverse, suspended from a fancy-link chain. *Length of watch 2.7cms. Length of chain 75.5cms. Weight 16.5gms. £20-30*



665

A mid 20th century fancy-link chain. Designed as a series of plain bars, interspaced by belcher-links. *Foreign marks. Length 47cms. Weight 4.1gms. £80-120*



661

An emerald single-stone dress ring. The oval-shape emerald, within a textured surround, to the bifurcated shoulders and plain band. *Approximate dimensions of emerald: 11 by 8 by 5.5mms. £100-150*



666

A diamond dress ring. Designed as a series of baguette-cut diamond curved lines, to the brilliant-cut diamond surround. *Estimated total diamond weight 1.65cts. Weight 6.4gms. £180-260*



662

A group of five bar brooches. To include an early 20th century gold split pearl crescent and foliate brooch, a foliate pierced brooch, together with three further brooches. *Lengths 4 to 5.4cms. Total weight 15.6gms. £120-180*



667

A 9ct gold diamond dress ring. The brilliant-cut diamond cluster, within a brilliant and tapered baguette-cut diamond scalloped surround, to the brilliant-cut diamond line sides. *Estimated total diamond weight 1.90cts. Hallmarks for Edinburgh. Weight 5.4gms. £240-340*



668

An 18ct gold emerald and diamond cluster ring. The circular-shape emerald, within a single-cut diamond surround, to the openwork textured shoulders and tapered band. *Estimated total diamond weight 0.15ct. Hallmarks for London, 1971. Weight 3.2gms. £80-120*



673 ✕



A selection of jewellery. To include a 9ct gold star ruby and brilliant-cut diamond pendant, a 9ct gold pink topaz and diamond pendant, together with a diamond floral cluster pendant and four further pendants. *Estimated total diamond weight 0.60ct. Four with hallmarks for 9ct gold. Lengths 1 to 2.9cms. Total weight 8.1gms. £100-150*

***669**

A brilliant-cut diamond, weighing 0.90ct. *Estimated J-K colour, VS clarity. £800-1,200*



674

A pair of diamond earrings. Each designed as a brilliant-cut diamond, to the similarly-cut diamond surmount and bar spacer. *Estimated total diamond weight 0.60ct. Foreign marks. Length 1.8cms. Weight 3.1gms. £150-200*



670

A seed pearl and trace-link chain necklace. Designed as a series of seed pearls, each measuring approximately 3.4 to 3.2mms, to the connecting trace-link chain. *Portuguese marks. Length 60cms. Weight 4.1gms. £80-120*



675

A platinum diamond cluster ring. The marquise-shape diamond, within a pavé-set diamond halo, to the similarly-set diamond line shoulders. *Estimated total diamond weight 0.35ct. Hallmarks for London, 2006. Weight 6.1gms. £240-340*



671

A diamond cluster ring. The single-cut diamond, within a similarly-cut diamond surround, to the openwork gallery and plain band. *Estimated total diamond weight 0.15ct. Weight 3gms. £80-120*



676

A diopside and diamond dress ring. The three graduated rectangular-shape diopsides, with brilliant-cut diamond line intervals, to the tapered band. *Estimated total diamond weight 0.10ct. Weight 2.1gms. £40-60*



672

A diamond and paste five-stone ring. The graduated brilliant-cut diamond and paste line, to the tapered band. *One paste replacement. Estimated total diamond weight 0.50ct. Weight 4.9gms. £150-200*



677

An 18ct gold diamond and gem-set pendant. Of interwoven design, comprising a circular-shape black-gem curve, to the brilliant-cut diamond scrolling line. *Estimated total diamond weight 0.20ct. Hallmarks for Birmingham. Length 3.4cms. Weight 1.3gms. £50-80*



678

A pair of sapphire and diamond ear pendants. Each designed as a pear-shape sapphire, within a brilliant-cut diamond surround, to the similarly-cut diamond collet surmount. *Estimated total diamond weight 0.35ct. Length 1.8cms. Weight 2.1gms. £100-150*



683

A mid 20th century 18ct gold diamond single-stone ring. The circular-cut diamond, within a square-shape star setting, to the stepped sides and plain band. *Estimated diamond weight 0.10ct. Weight 2gms. £40-60*



679

A 14ct gold diamond cluster ring. Of bombé design, the single-cut diamond cluster, within a single and tapered baguette-cut diamond intertwined, multi-layer surround. *Estimated total diamond weight 0.60ct. Hallmarks for Birmingham. Weight 9gms. £240-340*



684



A selection of three late 19th to early 20th century 9ct gold brooches. To include a sapphire and split pearl floral and stylised heart bar brooch, a fancy-link bar brooch, together with a target brooch with heart surround. *One with hallmarks for Chester, 1902. Lengths 4.4 to 2.5cms. Total weight 7.3gms. £50-80*

680

A cultured pearl necklace and three pairs of earrings. The necklace designed as a fancy-link chain with textured bead and cultured pearl accents, with matching earrings, together with two pairs of 9ct gold ear hoops. *Two with hallmarks for 9ct gold. Length of necklace 42cms. Length of earrings 3.7 to 1.7cms. Total weight 7.4gms. £70-100*



685

A diamond dress ring. Of chevron design, the two brilliant-cut diamond raised lines, to the single-cut diamond border and tapered band. *Estimated total diamond weight 1.45cts. Weight 7.4gms. £300-400*



681

A selection of three 9ct gold diamond dress rings. To include a square-shape diamond single-stone ring, a brilliant-cut diamond and circular-shape aquamarine crossover ring, together with a single-cut diamond crossover band ring. *Estimated total diamond weight 0.35ct. Hallmarks for 9ct gold. Weight 4.4gms. £120-180*



686



An early 20th century gold split pearl brooch. The split pearl openwork heart, to the split pearl foliate sides. *Length 4cms. Weight 3gms. £50-80*

682

A 9ct gold diamond single-stone crossover ring. The brilliant-cut diamond, to the curved shoulders and plain band. *Diamond weight 0.20ct, stamped to band, estimated H-I colour, P2-P3 clarity. Hallmarks for London. Weight 1.6gms. £30-50*



687

A diamond novelty pendant. Designed as a textured cat, hanging from a hoop and tapered surmount, with brilliant-cut diamond accents. *Length 3.3cms. Weight 9.6gms. £200-300*



688

Two gold diamond rings. To include an 18ct gold brilliant-cut diamond single-stone ring, together with a 9ct gold similarly-cut diamond three-stone ring with asymmetric shoulders. *Total diamond weight 0.58ct, stamped to bands, principal diamond estimated I-J colour, P1 clarity. Hallmarks for Birmingham. Total weight 5.7gms. £100-150*



693

A Masonic ball pendant. Designed as a sphere, unfolding to reveal a Masonic symbol engraved cross, to the openwork surmount. *Diameter of sphere 1.5cms. Total weight 7gms. £50-80*



689

A diamond ring mount. The two circular-shape six-claw mounts, with graduated brilliant-cut diamond asymmetric shoulders, to the tapered band. *Estimated total diamond weight 0.30ct. Weight 3.2gms. £100-150*



694

A gentleman's 18ct gold diamond three-stone ring. The three brilliant-cut diamonds, each within a star setting, to the tapered band. *Estimated total diamond weight 0.55ct. Hallmarks for London, 1975. Weight 6.4gms. £260-360*



690

An early 20th century 18ct gold diamond ring mount. The oval-shape mount, to the rose-cut diamond surround and tapered band. *Weight 2.1gms. £60-90*



695

A gentleman's 9ct gold diamond three-stone ring. The three brilliant-cut diamonds, inset to the tapered band. *Estimated total diamond weight 0.50ct. Hallmarks for Sheffield. Weight 6.5gms. £120-180*



691

A gentleman's 9ct gold Masonic swivel ring. The rectangular rotating panel, with blue enamel Masonic symbol front and plain reverse, to the tapered band. *Hallmarks for Birmingham, 1989. Weight 4.9gms. £50-80*



696

A gentleman's mid 20th century 14ct gold diamond single-stone ring. The brilliant-cut diamond, within an extended claw setting, to the plain band. *Estimated diamond weight 0.75ct, H-I colour, SI clarity. Hallmarks for Birmingham. Weight 6.7gms. £600-800*



692

A gentleman's 9ct gold Masonic enamel swivel ring. The square rotating panel, with blue enamel Masonic symbol front and engraved initial reverse, to the shield-shape surround and tapered shoulders. *Hallmarks for Birmingham, 1976. Weight 5.7gms. £60-90*



697

A gentleman's Edwardian 18ct gold diamond single-stone ring. The old-cut diamond, within an extended claw setting, to the tapered band. *Estimated diamond weight 0.35ct, L-tinted colour, VS clarity. Hallmarks for London, 1902. Weight 3.6gms. £90-140*



698

A gentleman's gold diamond ring. Of bi-colour design, the brilliant-cut diamond, inset to the square-shape panel, to the scroll engraved shoulders and tapered band. *Estimated diamond weight 0.10ct. Hallmarks indistinct. Weight 9.9gms. £200-300*



703

A gentleman's early 20th century 9ct gold bloodstone signet ring. The shield-shape bloodstone panel, within a scrolling surround, to the geometric engraved band. *Hallmarks for Birmingham, 1922. Weight 4.8gms. £40-60*



699

A gentleman's 9ct gold diamond cluster ring. The single-cut diamond square-shape panel, to the tapered band. *Estimated total diamond weight 0.20ct. Hallmarks for London, 1988. Weight 4.3gms. £70-100*



704

An 18ct gold tie retainer. The flattened curb-link chain front with chevron bar, to the hook back fitting. *Hallmarks for Edinburgh. Weight 7.8gms. £120-180*



700

A gentleman's early 20th century 18ct gold diamond single-stone ring. The brilliant-cut diamond, inset to the tapered band. *Estimated diamond weight 0.35ct, I-J colour, P3 clarity. Hallmarks for London, 1923. Weight 6.1gms. £150-200*



705

Two tie retainers. To include an 18ct gold example with curb-link chain, together with a bi-colour example with chevron detail. *First with hallmarks for Edinburgh. Weight of first 5.2gms. £100-150*



701

A gentleman's 1920s 9ct gold signet ring. The shield-shape panel, with engraved monogram, to the plain band. *Hallmarks for Birmingham, 1924. Weight 3.6gms. £40-60*



706

A 9ct gold paste tie retainer. Of bi-colour design, the geometric panel with paste accent, suspended from a flattened curb-link chain, to the hook-back fitting. *Hallmarks for Edinburgh. Weight 2.8gms. £20-30*



702

A gentleman's early 20th century 18ct gold signet ring. Designed as a partially engraved shield, to the scrolling shoulders and plain band. *Hallmarks for Chester, 1911. Weight 7.1gms. £150-200*



707 ✕



A pair of mid 20th century nephrite jade cufflinks. Each designed as a rectangular-shape nephrite jade cabochon, with textured triangular-shape sides, to the textured hinged back fitting. *Length of cufflink face 2cms. Weight 9gms. £80-120*

708



A pair of late 19th century 18ct gold cufflinks. Each designed as two textured domes, connected by a trace-link chain. *Diameter of cufflink face 1.2cms. Weight 6.8gms. £120-180*

713



A pair of tiger hunting-themed cufflinks. Each designed as a growling tiger, to the connecting-chain and shot link. *Length of cufflink face 1.7cms. Weight 11.2gms. £180-260*

709



A pair of 18ct gold lapis lazuli cufflinks. Each designed as an oval lapis lazuli panel, within a stepped surround, to the hinged back fitting. *Hallmarks for London. Length of cufflink face 1.8cms. Weight 17.5gms. £300-400*

714



A pair of emerald and diamond cufflinks. Each designed as two oval-shape panels, comprising an oval-shape emerald and single-cut diamond cluster, within a textured halo, to the connecting figure-of-eight. *Estimated total diamond weight 1.20cts. Length of cufflink face 1.4cms. Weight 7.5gms. £800-1,200*

710



A pair of silver and 14ct gold cufflinks. Each designed as a bi-colour stylised bullet, to the hinged back fitting. *Hallmarks for Edinburgh. Length of cufflink face 2cms. Total weight 17.7gms. £90-140*

715



Two 9ct gold enamel medallions. To include an early 20th century National Union of Railwaymen medal, together with a mid 20th century angling competition medal. *Hallmarks for Birmingham, 1925 and 1938. Lengths 3 and 3.7cms. Weight 15.7gms. £150-200*

711



A pair of 9ct gold cufflinks. Each designed as a stylised knot, to the hinged back fitting. *Import marks for London, 1979. Diameter of cufflink face 1.3cms. Weight 6.8gms. £60-90*

716



A RAF brooch. The RAF log and crown surmount, to the winged sides. *Length 5.5cms. Weight 4.4gms. £50-80*

712



A pair of 1960s 9ct gold cufflinks. Each designed as a textured square, with polished indented line, to the hinged back fitting. *Import marks for Birmingham, 1968. Length of cufflink face 1.6cms. Weight 6.3gms. £60-90*

717



A mid 20th century 9ct gold Royal Pioneer Corps brooch. With blue and red enamel detail. *Length 5cms. Weight 3.6gms. £30-50*

Fellows

Established 1876



**An auction of
Antique & Modern Jewellery
Thursday 14th May at 11am**

A selection of items in the upcoming auction.

For more information please contact **Georgina Kettle** on
0121 212 6301 or email **Georgina@fellows.co.uk**

**Jewellery
By Direction of
Various Pawnbrokers**



1001

(32654) A mid-20th century 9ct gold hinged bangle. With scrolling foliate engraved front and plain reverse. Personal inscription to inside. *Maker's marks for Smith & Pepper. Hallmarks for Birmingham, 1952. Inner diameter 5.9cms. Weight 15.2gms. £200-300*



1004 

(107655) CHOPARD - a 'Happy Diamonds' heart pendant. The brilliant-cut diamond collet, suspended within a heart-shape surround, to the surmount loop and 18ct gold belcher-link chain. *Signed and numbered Chopard, 2359960 79/3460. Estimated diamond weight 0.10ct. Chain with convention marks for Switzerland. Total weight 15.7gms. With maker's case. £1,200-1,800*



1002

(32654) A selection of three cultured pearl single-strand necklaces. To include two uniform cultured pearl necklaces, each with grooved oval-shape clasp, together with a graduated cultured pearl necklace with marcasite openwork clasp. One clasp AF. *Lengths 45.5 to 85.5cms. £60-90*



1005

(112548) Two Asian bangles. To include a rope-twist and partially openwork bangle with medallion and deity detail, together with a woven rope-twist hinged bangle with elephant mask terminals. *Inner diameters 5.2 and 5.7cms. Total weight 60gms. £1,600-2,200*



1003

(34292) A selection of Asian jewellery. To include a set of four bangles, a pair of hinged bangles, a gem accent fringe necklace with matching ear pendants and tika, together with a further fringe necklace and pair of ear pendants. *Total weight 339.2gms. £9,000-14,000*



1006

(114418) A selection of jewellery. To include a faceted belcher-link chain with S clasp, a stylised knot ring, a synthetic sapphire pendant section, together with a colourless paste pendant. *Length of chain 60cms. Total weight 49.9gms. £1,200-1,800*



1007

(135387) A selection of jewellery. To include five 9ct gold diamond and gem-set dress rings, a 14ct gold diamond single-stone ring, a diamond ring, a 9ct gold green quartz and diamond pendant, a citrine heart pendant on chain, together with a pair of cubic zirconia earrings. Seven with hallmarks for 9ct and 14ct gold. Total weight 17.4gms. £220-320



1010

(140352) Two gold diamond rings. To include an 18ct gold brilliant-cut diamond line crossover band ring, together with a 9ct gold diamond quatrefoil ring with asymmetric sides. Total diamond weight 0.53ct, stamped to band. Hallmarks for London. Total weight 7.6gms. £100-150



1008 ✕

(135523) Two ruby bangles. Each designed as a circular foil back ruby cabochon scalloped line. Inner diameter 5.7cms. Weight 30.6gms. £800-1,200



1011

(174636) A bracelet. Designed as a signet ring carved with a profile bust of a gentleman, to the bi-colour fancy-link sides and lobster clasp. Length 18.6cms. Weight 15.6gms. £400-600



1009

(135523) A two-row necklace. Comprising two vari-textured fancy-link chains, to the geometric fastener. Length 72.5cms. Weight 56gms. £1,500-2,000



1012

(174636) An 18ct gold aquamarine and diamond dress ring and a pair of topaz ear studs. The ring designed as an oval-shape aquamarine to brilliant-cut diamond trefoil sides, the ear studs each designed as a square-shape blue topaz. Estimated total diamond weight 0.25ct. Ring with hallmarks for London, 1983. Weight of ring 3.4gms. £150-200



1013 

(177619) DE GRISOGONO - a diamond 'Griffes' dress ring. The polished band, with pavé-set diamond scrolling sides. Signed and numbered De Grisogono 53210/05-3. Estimated total diamond weight 1.80cts. Weight 18gms. With maker's pouch and case. £2,500-3,000



1016

(181254) THEO FENNEL - a charm bracelet and charms. The belcher-link chain, suspending a heart and arrow charm, four diamond and pink and yellow sapphire 'heart' 'horn' and 'quiver' charms, together with a Chopard 'Happy Diamonds' heart pendant. Maker's marks for Theo Fennell and Chopard. Estimated total diamond weight 0.75ct. Length 19cms. Weight 49gms. £1,400-2,000



1014

(179529) An 18ct gold diamond single-stone ring. The rectangular-shape diamond, weighing 3.13cts, to the plain band. Accompanied by report number 16439519, dated 29th of February 2008, from the GIA, stating that the diamond is G colour, Internally Flawless. Hallmarks for Sheffield. Weight 5.9gms. £25,000-30,000



1015

(180459) A diamond single-stone ring. The square-shape diamond, with baguette-cut diamond sides inset to the plain band. Principal diamond estimated weight 1.60cts, I-J colour, VS2-SI1 clarity. Weight 7.7gms. £4,000-6,000

Notes



Fellows

Established 1876

An auction of Watches & Watch Parts

Monday 18th May at 10am

If you are looking for a box to go with your recent watch purchase, our upcoming auction of Watches & Watch Parts features a large selection of boxes from Cartier, Rolex, Omega and many more.

For more information please contact **Conrad Cunningham**
on **0121 212 5506** or email **Conrad@fellows.co.uk**

Fellows

Established 1876

Previously sold
at auction.



The Watch Sale

Tuesday 26th May at 10am

Viewing times

Friday 22nd May 10am – 4pm

Saturday 23rd May 11am – 4pm

Tuesday 26th May 8:30am – 11am

For more information please contact **Conrad Cunningham**
on **0121 212 5506** or email **Conrad@fellows.co.uk**

Fellows

Established 1876

Auction Calendar 2015

Thursday 14 May
Antique & Modern Jewellery

Thursday 11 June
Jewellery

Monday 18 May
Watches & Watch Parts

Monday 15 June
Stones for Tender

Thursday 21st May
Jewellery

Thursday 18 June
Antique & Modern Jewellery

Tuesday 26 May
The Watch Sale

Monday 22 June
Silver & Plated Ware

Monday 8 June
Vintage Jewellery & Accessories

Thursday 25 June
Jewellery

For further information please contact:

Jewellery

Heather Bailey
heather@fellows.co.uk
0121 212 6303

Silver & Coins

Naomi Wilson
naomi@fellows.co.uk
0121 212 6302

Watches

Conrad Cunningham
conrad@fellows.co.uk
0121 212 5506

Antiques & Fine Art

Kevin Jackson
kevin@fellows.co.uk
0121 212 2131

If you are unable to attend an auction day then you can still watch and bid live online at: www.the-saleroom.com/fellows

Fellows

Established 1876

PRICES REALISED

Jewellery – Thursday 23rd April 2015

| | | | | | | | | | | | |
|----|------|-----|--------|-----|--------|-----|--------|-----|--------|-----|------|
| 1 | £80 | 53 | £60 | 107 | £100 | 165 | £95 | 235 | £1,200 | 289 | £160 |
| 2 | £190 | 54 | £46 | 110 | £70 | 166 | £300 | 238 | £85 | 290 | £100 |
| 3 | £110 | 55 | £160 | 112 | £120 | 167 | £55 | 239 | £200 | 291 | £100 |
| 4 | £160 | 56 | £60 | 113 | £120 | 168 | £60 | 240 | £60 | 293 | £170 |
| 6 | £180 | 57 | £90 | 114 | £240 | 169 | £190 | 241 | £240 | 294 | £480 |
| 7 | £90 | 58 | £380 | 115 | £75 | 170 | £110 | 242 | £160 | 295 | £200 |
| 8 | £100 | 59 | £130 | 116 | £90 | 171 | £100 | 243 | £100 | 296 | £460 |
| 9 | £75 | 60 | £24 | 117 | £110 | 172 | £120 | 244 | £60 | 297 | £46 |
| 10 | £55 | 61 | £100 | 118 | £180 | 175 | £50 | 246 | £130 | 298 | £130 |
| 11 | £80 | 62 | £140 | 119 | £300 | 176 | £110 | 248 | £220 | 300 | £240 |
| 12 | £130 | 63 | £80 | 120 | £42 | 178 | £1,600 | 250 | £150 | 301 | £60 |
| 13 | £300 | 64 | £80 | 121 | £80 | 179 | £60 | 251 | £95 | 302 | £130 |
| 14 | £130 | 66 | £180 | 122 | £130 | 183 | £80 | 253 | £280 | 306 | £190 |
| 15 | £220 | 67 | £100 | 123 | £6,000 | 184 | £80 | 254 | £38 | 307 | £120 |
| 16 | £180 | 68 | £100 | 124 | £80 | 185 | £110 | 255 | £70 | 308 | £320 |
| 17 | £70 | 70 | £380 | 126 | £340 | 186 | £300 | 257 | £500 | 309 | £95 |
| 18 | £190 | 71 | £170 | 127 | £980 | 188 | £180 | 258 | £1,600 | 310 | £95 |
| 19 | £24 | 74 | £110 | 128 | £80 | 191 | £150 | 259 | £320 | 311 | £170 |
| 21 | £95 | 75 | £150 | 129 | £75 | 192 | £75 | 261 | £110 | 312 | £50 |
| 22 | £60 | 76 | £100 | 130 | £220 | 195 | £140 | 262 | £110 | 313 | £100 |
| 24 | £300 | 77 | £150 | 131 | £32 | 198 | £35 | 263 | £170 | 314 | £120 |
| 25 | £150 | 78 | £1,100 | 132 | £110 | 201 | £180 | 264 | £100 | 315 | £26 |
| 26 | £160 | 79 | £100 | 134 | £110 | 204 | £110 | 265 | £400 | 316 | £120 |
| 27 | £85 | 80 | £120 | 135 | £95 | 205 | £360 | 266 | £90 | 318 | £440 |
| 28 | £44 | 84 | £50 | 136 | £70 | 206 | £220 | 267 | £55 | 319 | £190 |
| 29 | £700 | 85 | £60 | 139 | £160 | 207 | £85 | 269 | £110 | 320 | £140 |
| 31 | £80 | 86 | £65 | 140 | £90 | 208 | £200 | 270 | £130 | 321 | £180 |
| 32 | £190 | 87 | £480 | 141 | £140 | 211 | £48 | 271 | £300 | 322 | £80 |
| 33 | £75 | 88 | £180 | 142 | £110 | 212 | £1,500 | 272 | £240 | 323 | £620 |
| 34 | £110 | 89 | £70 | 144 | £70 | 213 | £42 | 273 | £85 | 325 | £95 |
| 36 | £170 | 90 | £140 | 145 | £190 | 214 | £85 | 274 | £180 | 327 | £70 |
| 37 | £130 | 91 | £240 | 146 | £160 | 216 | £80 | 275 | £75 | 328 | £90 |
| 38 | £90 | 93 | £220 | 147 | £140 | 217 | £90 | 276 | £260 | 331 | £160 |
| 39 | £190 | 94 | £100 | 148 | £140 | 218 | £50 | 277 | £150 | 332 | £65 |
| 40 | £75 | 95 | £90 | 149 | £220 | 222 | £55 | 278 | £160 | 333 | £60 |
| 41 | £340 | 96 | £110 | 152 | £110 | 223 | £190 | 279 | £130 | 334 | £130 |
| 42 | £140 | 97 | £280 | 153 | £150 | 224 | £60 | 280 | £60 | 337 | £190 |
| 44 | £85 | 99 | £160 | 154 | £65 | 225 | £220 | 281 | £160 | 338 | £200 |
| 45 | £100 | 100 | £90 | 155 | £90 | 226 | £120 | 282 | £220 | 339 | £38 |
| 46 | £48 | 101 | £95 | 157 | £190 | 229 | £140 | 283 | £195 | 341 | £95 |
| 47 | £140 | 102 | £120 | 158 | £110 | 231 | £80 | 284 | £90 | 343 | £110 |
| 48 | £700 | 103 | £120 | 161 | £80 | 232 | £90 | 286 | £220 | 344 | £40 |
| 49 | £85 | 104 | £480 | 162 | £95 | 233 | £110 | 287 | £480 | 345 | £360 |
| 51 | £90 | 105 | £320 | 164 | £44 | 234 | £440 | 288 | £95 | 346 | £620 |

| | | | | | | | | | | | |
|-----|------|-----|------|-----|------|-----|------|-----|------|-----|------|
| 347 | £240 | 412 | £360 | 473 | £80 | 543 | £110 | 609 | £130 | 683 | £100 |
| 348 | £340 | 413 | £120 | 475 | £180 | 545 | £60 | 611 | £90 | 684 | £140 |
| 349 | £80 | 414 | £60 | 476 | £80 | 546 | £260 | 612 | £70 | 685 | £80 |
| 350 | £130 | 415 | £100 | 477 | £140 | 548 | £120 | 613 | £120 | 688 | £100 |
| 352 | £110 | 416 | £90 | 478 | £110 | 549 | £180 | 614 | £480 | 689 | £150 |
| 354 | £100 | 417 | £110 | 479 | £130 | 550 | £140 | 615 | £80 | 690 | £36 |
| 355 | £170 | 418 | £80 | 480 | £90 | 551 | £90 | 617 | £70 | 691 | £100 |
| 356 | £100 | 419 | £120 | 481 | £160 | 552 | £280 | 619 | £150 | 694 | £360 |
| 357 | £95 | 420 | £90 | 482 | £260 | 553 | £140 | 620 | £220 | 695 | £140 |
| 358 | £100 | 422 | £320 | 484 | £320 | 554 | £240 | 621 | £42 | 697 | £150 |
| 360 | £180 | 424 | £60 | 487 | £170 | 555 | £120 | 622 | £150 | 698 | £45 |
| 361 | £95 | 425 | £200 | 489 | £240 | 556 | £75 | 627 | £560 | 699 | £120 |
| 362 | £110 | 426 | £70 | 490 | £60 | 557 | £110 | 628 | £180 | 700 | £70 |
| 363 | £110 | 427 | £140 | 491 | £140 | 558 | £60 | 630 | £60 | 701 | £70 |
| 364 | £220 | 428 | £50 | 492 | £260 | 559 | £190 | 632 | £95 | 702 | £85 |
| 365 | £340 | 429 | £55 | 495 | £46 | 560 | £50 | 633 | £110 | 704 | £130 |
| 366 | £230 | 430 | £360 | 496 | £170 | 561 | £400 | 635 | £50 | 706 | £70 |
| 367 | £110 | 431 | £70 | 497 | £240 | 562 | £28 | 636 | £90 | 707 | £34 |
| 368 | £120 | 433 | £150 | 498 | £90 | 564 | £55 | 638 | £200 | 708 | £90 |
| 369 | £200 | 435 | £660 | 499 | £120 | 565 | £110 | 641 | £320 | 710 | £65 |
| 372 | £560 | 437 | £110 | 501 | £95 | 566 | £55 | 642 | £320 | 711 | £65 |
| 373 | £80 | 438 | £100 | 502 | £110 | 567 | £220 | 643 | £180 | 713 | £110 |
| 375 | £130 | 439 | £500 | 503 | £100 | 568 | £110 | 644 | £130 | 714 | £320 |
| 376 | £150 | 440 | £150 | 504 | £65 | 569 | £36 | 645 | £160 | 715 | £60 |
| 378 | £110 | 441 | £70 | 508 | £130 | 570 | £55 | 648 | £26 | 716 | £36 |
| 379 | £130 | 442 | £320 | 509 | £90 | 571 | £130 | 649 | £260 | 717 | £560 |
| 380 | £120 | 443 | £170 | 514 | £55 | 572 | £190 | 650 | £100 | 718 | £70 |
| 381 | £85 | 444 | £190 | 515 | £85 | 574 | £90 | 652 | £46 | 719 | £110 |
| 382 | £100 | 445 | £55 | 516 | £200 | 576 | £520 | 653 | £65 | 720 | £90 |
| 384 | £80 | 446 | £240 | 517 | £200 | 582 | £65 | 654 | £110 | 721 | £70 |
| 386 | £120 | 447 | £280 | 518 | £110 | 583 | £180 | 655 | £38 | 722 | £130 |
| 387 | £360 | 448 | £120 | 520 | £50 | 586 | £60 | 656 | £70 | 723 | £120 |
| 388 | £120 | 449 | £70 | 521 | £100 | 588 | £60 | 657 | £260 | 725 | £90 |
| 389 | £130 | 450 | £90 | 522 | £520 | 589 | £500 | 658 | £200 | 727 | £840 |
| 391 | £130 | 451 | £65 | 524 | £110 | 590 | £80 | 659 | £100 | 728 | £240 |
| 393 | £160 | 452 | £260 | 525 | £60 | 591 | £65 | 660 | £36 | 729 | £300 |
| 394 | £180 | 453 | £100 | 526 | £70 | 592 | £110 | 662 | £380 | 730 | £60 |
| 395 | £180 | 456 | £190 | 527 | £55 | 595 | £140 | 663 | £70 | 731 | £100 |
| 396 | £160 | 457 | £180 | 528 | £110 | 596 | £110 | 665 | £190 | 732 | £70 |
| 397 | £180 | 458 | £280 | 529 | £220 | 597 | £170 | 667 | £110 | 733 | £75 |
| 400 | £80 | 459 | £150 | 530 | £130 | 599 | £75 | 668 | £85 | 734 | £120 |
| 404 | £85 | 460 | £70 | 531 | £60 | 600 | £220 | 669 | £150 | 736 | £70 |
| 405 | £160 | 463 | £800 | 534 | £80 | 601 | £100 | 672 | £160 | 737 | £130 |
| 407 | £340 | 464 | £110 | 535 | £55 | 604 | £85 | 675 | £240 | 738 | £48 |
| 408 | £200 | 465 | £48 | 536 | £140 | 605 | £55 | 677 | £120 | 739 | £140 |
| 409 | £55 | 466 | £130 | 537 | £95 | 606 | £90 | 680 | £50 | | |
| 410 | £120 | 469 | £60 | 541 | £160 | 607 | £90 | 681 | £220 | | |
| 411 | £75 | 472 | £220 | 542 | £46 | 608 | £130 | 682 | £140 | | |

IMPORTANT NOTICES FOR PURCHASERS

IMPORTANT NOTICE TO PROSPECTIVE BUYERS OF GEMSTONES/JEWELS

Purchasers are advised that whilst great care has been taken in the examination of gemstones, it is not possible to test every gemstone in multi-gemstone lots.

Notes 1 – Coloured Gemstones

Historically, many coloured gemstones have been subjected to a variety of treatments designed to enhance their appearance. Certain enhancement methods, such as heating, are routinely used to improve colour or transparency in rubies and sapphires. Other methods, such as oiling, enhance the clarity of emeralds. The international jewellery trade has generally accepted these methods. Other coloured gemstones may have undergone other permanent or semi-permanent treatments, such as dyeing, irradiation, coating and impregnation, possibly requiring further re-treatment in order to retain their appearance.

Prospective purchasers should assume that all gemstones will have been treated unless statements are made to the contrary. Gemmological reports from internationally recognised Gemmological Laboratories will be noted in the item description where available.

Note 2 – Diamonds

Recent advancements in technology have led to some diamonds being treated in a number of ways, all designed to improve their appearance or alter colour. These processes include fracture filling, laser drilling, a combination of drilling and filling, HPHT, irradiation and various coatings. Buyers are also alerted to the fact that synthetic (laboratory created) diamonds, notably in small (melee) sizes are now produced in large quantities. Whilst every effort is made to identify or disclose treated and synthetic goods, it is not possible for Fellows to guarantee that all diamond set lots do not contain such material.

Fellows do not knowingly offer treated diamonds for sale, unless a gemmological report disclosing the type of treatment has been obtained from an internationally recognised Gemmological Laboratory, and stated within the item description. Diamond grades for colour and clarity (see separate Notes on Diamond Grading terms) where printed in the catalogues are intended as guides for prospective purchasers, with the given limitations of mounts and settings, and are not guaranteed by Fellows.

Statements in the catalogue regarding the condition of lots in this sale may appear in the description, however, the absence of such a reference does not imply that a lot is in a perfect or near perfect condition, or completely free from wear or imperfections. Fellows will be pleased to offer Condition Reports to interested clients for lots with estimates of £100 or more.

Diamond Grading Terms

DIAMOND COLOUR

| GIA | OLD WORLD TERMS | EXPLANATION | GIA | OLD WORLD TERMS | EXPLANATION |
|-----|----------------------------|---|-----|--------------------------------|---|
| D | Finest White (Jager) | Colourless | K | Silver Cape (Top Cape) | Traces of colour. Small stones in this range will 'face up' colourless when mounted but larger stones will be tinted. |
| E | Finest White (River) | Colourless | | | |
| F | Fine White (River) | Colourless | L | Silver Cape (Top Cape) | Traces of colour. Small stones in this range will 'face up' colourless when mounted but larger stones will be tinted. |
| G | Fine White (Top Wesselton) | Near Colourless: diamonds 'face up' colourless. Slight traces of colour will not be apparent in the mounted stones to other than the trained eye. | M | Light Cape (Cape) | Traces of colour. Small stones in this range will 'face up' colourless when mounted but larger stones will be tinted. |
| H | White (Top Wesselton) | Near Colourless: diamonds 'face up' colourless. Slight traces of colour will not be apparent in the mounted stones to other than the trained eye. | N | Light Cape (Low Cape) | Diamonds graded N through Z+ display a yellowish tint even to the untrained eye. |
| I | White (Top Wesselton) | Near Colourless: diamonds 'face up' colourless. Slight traces of colour will not be apparent in the mounted stones to other than the trained eye. | P | Cape O – R (Very Light Yellow) | Diamonds graded N through Z+ display a yellowish tint even to the untrained eye. |
| J | Top Silver (Top Wesselton) | Near Colourless: diamonds 'face up' colourless. Slight traces of colour will not be apparent in the mounted stones to other than the trained eye. | Z | Cape R – Z (Very Light Yellow) | Diamonds graded N through Z+ display a yellowish tint even to the untrained eye. |
| | | | Z+ | Fancy Yellow | Diamonds graded N through Z+ display a yellowish tint even to the untrained eye. |

DIAMOND CLARITY

| GIA | OLD WORLD TERMS | EXPLANATION | GIA | OLD WORLD TERMS | EXPLANATION |
|-------------|-----------------------------|---|-------------|-------------------|---|
| IF | Internally Flawless | No inclusions visible with a 10x lens even to an experienced grader. | SI1 & SI2 | Slightly Included | Noticeable inclusions visible with a 10x lens. |
| VVS1 & VVS2 | Very Very Slightly Included | Minute inclusions, which are difficult, even for experienced graders, to see with a 10x lens. | I1, I2 & I3 | Pique 1, 2 & 3 | Obvious inclusions, may be visible to the unaided eye, face up. In I3 they may affect the stone's durability. |
| VS1 & VS2 | Very Slightly Included | Minor inclusions, observable with effort with a 10x lens. | | | |

Fellows & Sons Ltd

Terms and Conditions

Fellows & Sons Ltd carries on business, including the conduct of Auctions, on the following general conditions. This includes business with Bidders, Buyers, Vendors, consignors, users of this website, and with all those present on the Premises prior to or in connection with an Auction (all as hereinafter defined).

1. INTRODUCTION

1.1 The following defined terms are used in these Conditions :

“Auction” means any Auction conducted by Fellows, either at their premises or elsewhere (including any internet-based auctions);

“Auctioneer” means Fellows or its authorised Auctioneer, as appropriate;

“Bidder” means a bidder at an Auction, including bidders personally present at the venue and those bidding by telephone or over the internet or otherwise;

“Buyer” means the bidder whose bid was the last bid when the Auctioneer brings down the hammer;

“Conditions” means these terms and conditions;

“Consigned Property” means the items consigned by the Vendor to Fellows for offer at an Auction;

“Deliberate Forgery” means an imitation made with the intention of deceiving as to authorship, origin, date, age, period, culture or source but which is unequivocally described by Fellows in the catalogue as being the work of a particular creator and which at the date of the sale had a value materially less than it would have had if it had been in accordance with the description;

“Fellows” means Fellows & Sons Ltd;

“Hammer Price” means the level of bidding reached (at or above any reserve) when the Auctioneer brings down the hammer;

“Includes” means “includes but not limited to”, and “including” means “including but not limited to”

“Lot” means any Consigned Property accepted by Fellows for offer at Auction;

“Stated Rate” means Fellows’ published rates of commission for the time being and value added tax thereon (also available on request);

“Terms of Consignment” means any stipulated terms and rates of commission on which Fellows accepts instructions from Vendors [or their agents];

“Total Amount Due” means the Hammer Price in respect of the Lot sold together with any premium, commission, value added tax chargeable and any additional charges payable by a defaulting Buyer under these Conditions;

“Vendor” means the vendor of an item (including Consigned Property) which is submitted to Fellows for offer for sale at an Auction;

“Website” means this website;

“You” means any user of the Website.

2. WEBSITE

2.1 You may access most areas of the Website without

registering your details with us. Certain areas of the Website are only open to you if you register. By accessing any part of the Website, you shall be deemed to have accepted these Conditions notice in full. If you do not accept this legal notice in full, you must leave the Website immediately.

2.2 Fellows may revise these Conditions at any time by updating this posting. You should check the Website from time to time to review the then current legal notice, because it is binding on you. Certain provisions of this legal notice may be superseded by expressly designated legal notices or terms located on particular pages at the Website.

2.3 Unless otherwise stated, the copyright and other intellectual property rights in all material on the Website (including without limitation photographs and graphical images) are owned by Fellows or its licensors. If you breach any of the terms in this legal notice, your permission to use the Website automatically terminates and you must immediately destroy any downloaded or printed extracts from the Website.

2.4 No part of the Website may be reproduced or stored in any other website or included in any public or private electronic retrieval system or service without Fellows’ prior written permission.

2.5 Any rights not expressly granted in these Conditions are reserved.

3. VISITOR MATERIAL AND CONDUCT

3.1 Other than personally identifiable information, which is covered under our Privacy Policy, any material you transmit or post to the Website shall be considered non-confidential and non-proprietary. Fellows shall have no obligations with respect to such material. Fellows and its designees shall be free to copy, disclose, distribute, incorporate and otherwise use such material and all data, images, sounds, text and other things embodied therein for any and all commercial or non-commercial purposes.

3.2 You are prohibited from posting or transmitting to or from the Website any material: that is threatening, defamatory, obscene, indecent, seditious, offensive, pornographic, abusive, liable to incite racial hatred, discriminatory, menacing, scandalous, inflammatory, blasphemous, in breach of confidence, in breach of privacy or which may cause annoyance or inconvenience; or for which you have not obtained all necessary licences and/or approvals; or which constitutes or encourages conduct that would be considered a criminal offence, give rise to civil liability, or otherwise be contrary to the law of or infringe the rights of any third party, in any country in the world; or which is technically harmful (including, without limitation, computer viruses, logic bombs, Trojan horses, worms, harmful components, corrupted data or other malicious software or harmful data).

3.3 You may not misuse the Website (including, without limitation, by hacking).

- 3.4 Each registration is for a single user only. Fellows does not permit you to share your user name and password with any other person nor with multiple users on a network.
- 3.5 Responsibility for the security of any passwords issued rests with you.

4. THE VENDOR

- 4.1 Fellows shall act as agent of the Vendor only. Any contract for the sale of a Lot will be formed between the Vendor and the Buyer.
- 4.2 The Vendor warrants and represents to Fellows and the Buyer that the Vendor is the sole and true owner of the Consigned Property or is properly authorised by the sole and true owner to consign it for sale and is able to transfer good and marketable title to the property free from any third party claims. The Vendor warrants and representatives that the Vendor has revealed all pertinent information that the Vendor possesses about the items, including in relation to any repairs or alterations that may have been carried out. The Vendor shall indemnify Fellows and the Buyer against any loss and expense caused by any breach of this clause 4.2.
- 4.3 The Vendor shall be entitled to place prior to the Auction a reserve on any Lot, being the minimum Hammer Price at which Lot may be sold. Reserves must be reasonable and Fellows may decline to offer goods which in Fellows' opinion would be subject to an unreasonably high reserve (in which case goods carry the storage and insurance charges stipulated in the terms of consignment). Reserves will not be accepted on items with a bottom estimate less than £100. The Auctioneer also reserves the right not to accept items which they deem to be unsuitable for Auction. Any estimate given shall be an opinion and is not an undertaking of any kind.
- 4.4 A reserve once set cannot be changed except with the written prior consent of Fellows.
- 4.5 Where a reserve has been placed only Fellows may bid on behalf of the Vendor.
- 4.6 The Vendor authorises Fellows to deduct commission from any sold items at a rate of 15% (plus VAT) on any item with a hammer price of £3,000 (or under) or 12.5% (plus VAT) on items over £3,000. Loss or liability for damage will be charged at a rate of 1.5% (plus VAT) calculated on the hammer price. A Marketing fee of £10 (plus VAT) will be charged for each Lot, if unsold we will charge a nominal handling fee of £5 (plus VAT). All items below £35 are subject to a minimum fee of £5 (plus VAT) per Lot.
- 4.7 Fellows will pay the Hammer Price achieved for the Lot (less its commission and applicable fees in accordance with clauses 4.6, 9.2 and 9.3), to the Vendor on receipt of payment of the Total Amount Due in full by the Buyer.
- 4.8 The Vendor authorises Fellows in their discretion to negotiate a sale by private treaty in the case of a Lot unsold at Auction, in which case the same charges will be payable as if the Lot had been sold at Auction.
- 4.9 Fellows do not themselves undertake the collection of any items but may, as the Vendor's agent, instruct a contractor on behalf of the Vendor.

Fellows accepts no liability for the actions of such contractor who contracts with the Vendor direct.

- 4.10 Fellows disclaims all liability for items delivered to their saleroom without sufficient sale instructions, and reserves the right to make a minimum warehousing charge of [£1.00] per item per day. Unsold items are subject to the same charges if the Vendor does not remove them within a reasonable time of notification. If not removed within three weeks Fellows reserves the right to sell the items and defray charges from any net proceeds of sale or at the Vendor's expense to consign them to the local authority for disposal. Fellows disclaims any liability for default by the Buyer or for paying out the Vendor before receiving payment by the Buyer.
- 4.11 Subject to clause 4.9, Fellows holds all items on their premises and in their custody covered against the risks of fire, burglary and water damage on the scale of charges notified in the terms of consignment and payable by the Vendor up to the date of any sale and (in Fellows' discretion) the Buyer thereafter until collection.
- 4.12 The right of Fellows to bid on behalf of the Vendor is expressly reserved. The Vendor acknowledges that Lots are sold subject to the stipulations of these Conditions in their entirety and on the Terms of Consignment as notified to consignors at the time of the entry of the Lot.
- 4.13 The Auctioneer reserves the right to dispose of any item that in their opinion is unsaleable. Items, including electrical goods and soft furnishings, which do not comply with current legislation will not be offered at Auction.
- 4.14 Any items unsold after an Auction will be reoffered in a subsequent Auction at a reduced reserve to be agreed within seven days. The Auctioneer may request the removal of an item if a reduced price cannot be agreed; items not removed within 14 days will be subject to a storage charge.
- 4.15 A charge of 10% (plus VAT) based on the middle estimate – plus any other charges incurred – may be levied for any Lot withdrawn by the Vendor from offer at an Auction. If the item has to be returned by post (or any other method) the Vendor will be responsible for this charge. These charges are to be paid before the item is returned.
- 4.16 By submitting the item to Fellows for offer at Auction, the Vendor agrees to the Terms of Consignment and authorises Fellows to deduct the specified charges.

5. PUBLICITY

- 5.1 Any catalogue and buyer guides are provided for information only and do not form part of these Conditions. The catalogue and the buyer guides may contain additional terms and conditions.
- 5.2 Fellows reserve the right to use any photographs, background information, and research for publicity purposes both before and after the sale.

6. THE AUCTION

- 6.1 Any Auction shall be conducted at the absolute discretion of the Auctioneer.
- 6.2 The Auctioneer shall conduct the Auction with reasonable skill and care. For example, what

constitutes a bid shall be at the absolute discretion of the Auctioneer, acting with reasonable skill and care.

- 6.3 The Auctioneer shall have the right to refuse any bid which does not exceed the previous bid by at least 10% or by such greater proportion as the Auctioneer shall in his or her absolute discretion direct.
- 6.4 Where two or more bids at the same level are simultaneously received by the Auctioneer, the Auctioneer at his absolute discretion shall determine which bid to prefer. Subject to the foregoing, where two or more bids at the same level are simultaneously received by the Auctioneer, any bid by a Bidder personally present at an Auction shall take preference over any bid submitted by telephone or over the internet. Any bid made or attempted by telephone or over the internet shall be deemed to have been made only if received by the Auctioneer.
- 6.5 Fellows shall have the right, at its absolute discretion, to refuse admission to its premises or attendance at (or participation in) any Auction by any person.

7. **BIDDERS**

- 7.1 Bidders may be required to register their particulars. Bidders attending in person may be required to satisfy Fellows' security arrangements before entering any part of the premises to view or bid.
- 7.2 You accept full liability for all bids submitted via your My Fellows account.
- Once a bid has been made by a Bidder on our website, the bid can be lowered or increased up until 9am on the day of the auction. You must sign into your My Fellows account to do this and you will receive an email confirmation for any changes made.
- Should a bid be placed in error on the website you must contact Fellows immediately. Failure to contact Fellows before the auction takes place will result in liability for the full payment of the item.
- 7.3 Subject to clause 6.3, the highest Bidder at the Hammer Price shall be the Buyer. Any dispute about a bid shall be settled at the Auctioneer's absolute discretion.
- 7.4 Bidders are deemed to act as principals unless there is a written prior acknowledgement by Fellows that a Bidder is acting as an agent for a named principal.
- 7.5 Bidders are strongly encouraged to attend the Auction in person. Bidders shall be responsible for any decision to bid for a particular Lot and shall be deemed to have carefully inspected and satisfied themselves as to its condition. Neither Fellows nor its employees or agents shall be responsible for any neglect or default in doing or failing to do so.
- 7.6 Bidders are given ample opportunities to view and inspect before any sale and prospective Buyers must satisfy themselves as to all such matters. Neither Fellows or its employees or agents nor the Vendor accept liability for the correctness of such opinions and all conditions and warranties, express, implied or statutory are hereby excluded.

8. **THE BUYER**

- 8.1 Immediately a Lot is sold, the Buyer shall:
- (a) give to Fellows their name and address and, if requested proof of identity, and
- (b) pay to Fellows the Total Amount Due.

- 8.2 [Fellows may, at its absolute discretion, agree credit terms with the Buyer before an Auction under which the Buyer may be entitled to take possession of Lots up to an agreed value in advance of payment by a stipulated future date of the Total Amount Due.]
- 8.3 Cheques shall not be acceptable by Fellows (unless Fellows in its absolute discretion permits payment by such method) nor are third party references or credit facilities with other Auction houses. If a cheque is tendered Fellows reserves the right to instruct its bank to check the Buyer's status and account balance before exercising any discretion. Any credit arrangement must be settled at least 4 days before the relevant sale. Any permitted payment by credit card shall carry an extra charge to the Buyer of such percentage of the Total Amount Due as is displayed on the premises.
- 8.4 Any payments by a Buyer to Fellows may be applied by Fellows towards any sums owing from that Buyer to Fellows on any account whatever without regard to any directions of the Buyer or his agent, whether express or implied.

9. **THE PURCHASE PRICE**

- 9.1 On the first £50,000 of the Hammer Price (of any Lot) the Buyer will pay the Hammer Price and a premium of 20% (plus VAT on the total of the Hammer Price and the premium). Value Added Tax is charged at the rate prevailing by law at the date of sale
- 9.2 On the excess over £50,000 of the Hammer Price (of any individual Lot), the Buyer will pay the Hammer Price and a premium of 10% (plus VAT). The said premium not being negotiable and payable by ALL Buyers. The Vendor authorises Fellows to retain beneficially the premium payable by Buyers.
- 9.3 Value Added Tax on the Hammer Price is imposed on all items affixed with an asterisk thus - *.
- 9.4 Live Online Bidding Charges – Buyers will pay a commission charge of an additional 3% of the hammer price if lots are successfully purchased online via a live bidding platform such as Live Auctioneers and the-saleroom.com.

10. **TITLE AND COLLECTION OF PURCHASES**

- 10.1 The ownership of any Lot purchased shall not pass to the relevant Buyer until they have made payment in full to Fellows of the Total Amount Due.
- 10.2 Buyers shall at their own risk and expense take away any Lot that they have purchased and paid for not later than 2 working days following the day of the Auction after which they shall be responsible for any removal, storage and insurance charges.

11. **DEFAULT BY BUYER OR VENDOR**

- 11.1 As Fellows act as agent for the Vendor, Fellows is not responsible for default by the Vendor or the Buyer.
- 11.2 If any Lot is not paid for in full and taken away in accordance with these Conditions, or if there is any other breach of these Conditions, Fellows as agent for the Vendor shall at its absolute discretion and without prejudice to any other rights it may have, be entitled to exercise all or any of the following rights and remedies:
- (a) to proceed against the Buyer for an action for debt or

damages for breach of contract;

- (b) to rescind the sale of that Lot and/or any other Lots sold by Fellows to the defaulting Buyer;
- (c) to re-sell the Lot (by Auction or private treaty) in which case the defaulting Buyer shall be responsible for any resulting deficiency in the total amount due (after crediting any part payment and adding any resale costs), and any surplus so arising shall belong to the Vendor;
- (d) to remove, store and insure the Lot at the expense of the defaulting Buyer and, in the case of storage, either at Fellows' premises or elsewhere;
- (e) to charge interest at a rate not exceeding [1.5%] per month on the total amount due to the extent it remains unpaid for more than 2 working days after the sale;
- (f) to retain that or any other Lot sold to the defaulting Buyer until that Buyer pays the total amount due;
- (g) to reject or ignore bids from the defaulting Buyer at future Auctions or to impose conditions before any such bids shall be accepted;
- (h) to apply any proceeds of sale of other Lots due or in future becoming due to the defaulting Buyer towards the settlement of the total amount due and to exercise a lien on any of the Buyer's property in Fellows' possession for any purpose.

12. DELIBERATE FORGERIES

- 12.1 Subject to clause 12.2, any representation or statement by Fellows (including in any catalogue) as to authorship, genuineness, origin, date, age, provenance, condition or estimated selling price is a statement of opinion only. Prospective Buyers are given ample opportunities to view and inspect before any sale and prospective Buyers must satisfy themselves as to all such matters. Neither Fellows or its employees or agents nor the Vendor accept liability for the correctness of such opinions and all conditions and warranties, express, implied or statutory are hereby excluded.
- 12.2 Any Lot which proves to be a Deliberate Forgery may be returned to Fellows by the Buyer within 21 days of the Auction provided it is in the same condition as when bought, and is accompanied by particulars identifying it from the relevant catalogue description and a written statement of defects. If Fellows is satisfied from the evidence presented that the Lot is a Deliberate Forgery Fellows shall refund the money paid by the Buyer for the Lot (but not the amount of any consequential loss, damages, expenses or interest) provided that (1) if the catalogue description reflected the accepted view of scholars and experts as at the date of sale or (2) the Buyer personally is not able to transfer a good and marketable title to Fellows.

13. LIMITATIONS OF LIABILITY

- 13.1 All members of the public on the premises are there at their own risk and must note the lay-out of the accommodation and security arrangements.
- 13.2 Any indemnity under these Conditions shall extend to all actions, costs, expenses, claims and demands whatsoever suffered or incurred by the person entitled to the benefit of it and Fellows declares itself to be a trustee of the benefit of every such indemnity so far as

it is expressed to be for the benefit of its employees and agents.

- 13.3 While Fellows endeavours to ensure that the information on the Website is correct, Fellows does not warrant the accuracy and completeness of the material on the Website. Fellows may make changes to the material on the Website, or to the products and prices described in it, at any time without notice. The material on the Website may be out of date, and Fellows makes no commitment to update such material.
- 13.4 The material on the Website is provided "as is", without any conditions, warranties or other terms of any kind. Accordingly, to the maximum extent permitted by law, Fellows provides you with the Website on the basis that Fellows excludes all representations, warranties, conditions and other terms which, but for this legal notice, might have effect in relation to the Website.

14. GENERAL

- 14.1 Any notice to any Buyer, Vendor, Bidder or viewer may be given by first class mail or email in which case it shall be deemed to have been received by the addressee 48 hours after posting or sending. All notices to Fellows must be sent in writing and email is not acceptable.
- 14.2 Any indulgence extended to any person by Fellows notwithstanding the strict terms of these Conditions or the Terms of Consignment shall affect the position at the relevant time only and in respect of that particular concession only; in all other respects these Conditions shall be construed as having full force and effect.
- 14.3 These Conditions and any disputes or claims arising out of or in connection with it or their subject matter or formation (including non-contractual disputes or claims) are governed by and construed in accordance with the law of England.
- 14.4 The parties irrevocably agree that the courts of England have exclusive jurisdiction to settle any dispute or claim that arises out of or in connection with the Agreement or its subject matter or formation (including non-contractual disputes or claims).

15. SHIPPING

- 15.1 We offer a tracked and insured shipping service for a standard rate of £15.00* per parcel.
- 15.2 *Larger items, as well as those exceeding a value of £5,000 or weighing in excess of 2kg may be subject to additional fees.
- 15.3 Due to the size and vulnerability of the items in our Antique Furniture and Silver auctions, we are unable to post these items and advise buyers to check the cost of shipping before bidding.

Fellows
Established 1876

Established 1876

If you would like to receive catalogues on a regular basis, please mark the appropriate category and return this form with a cheque made payable to Fellows for the full amount.

Subscriptions last for a 12 month period

| | | |
|---|-------------|--|
| Antique & Modern Jewellery 12 catalogues per year | £100 | |
| Pocket Watches & Accessories 4 catalogues per year | £35 | |
| Silver & Plated Ware 4 catalogues per year | £35 | |
| Vintage Jewellery & Accessories 8 catalogues per year | £70 | |
| Jewellery 24 catalogues per year | £150 | |
| Watches 12 catalogues per year | £100 | |
| Coins & Medals 3 catalogues per year | £30 | |
| Antiques & Fine Art 4 catalogues per year | £35 | |
| Loose Stones for Tender 4 catalogues per year | £35 | |

All of the above catalogues are available to view **FREE**
of charge on our website www.fellows.co.uk

Name (Block Capitals)

Address (Block Capitals)

.....

Post Code Telephone

Signature Date

Email

Fellows

Established 1876

Commission Bidding Slip

Thursday 7th May 2015

Jewellery

Name

Address

Please bid on my behalf for the lot(s) shown below.

The bids will be executed as cheaply as is permitted by other bids in the room or reserves.

I have read and agree to comply with the Conditions of Sale as printed in the catalogue.

Any account for items purchased on my behalf will be settled within 24 hours of the sale and the items collected within two days of sale.

Please complete in block capitals.

Postcode

Telephone

Email

Signed Date

| Lot | Price | Lot | Price | Lot | Price |
|-----|-------|-----|-------|-----|-------|
| | | | | | |
| | | | | | |
| | | | | | |
| | | | | | |
| | | | | | |
| | | | | | |
| | | | | | |
| | | | | | |
| | | | | | |
| | | | | | |
| | | | | | |
| | | | | | |
| | | | | | |
| | | | | | |

Buyer's Premium

The buyer's premium is 20% (+ VAT) or 24% (VAT inclusive) on the first £50,000 of any individual lot. For any individual lot in excess of £50,000, the buyer's premium is 10% (+ VAT) or 12% (VAT inclusive).

Lots prexed with * will carry VAT at 20% on the hammer price.

Please note the bidding increments

- | | |
|-----------------|------------------|
| £50 – £100 | £5 increments |
| £100 – £200 | £10 increments |
| £200 – £1000 | £20 increments |
| £1000 – £10,000 | £100 increments |
| Over £10,000 | £1000 increments |

Any bids shown not complying with these increments will be **ROUNDED UP** to the next increment.

Fellows

Established 1876

Contact Information

Directors

Stephen Whittaker BA (Hons)
Jayne Whittaker

Ben Griffiths BSc (Hons)
Adrian Hailwood MA (Hons)

Bryony Meredith BA (Hons), FGA

Departments

Operations
0121 212 5508

Ben Griffiths BSc (Hons)
beng@fellows.co.uk

Accounts
0121 212 2131

Sandra Ford
sandra@fellows.co.uk

Insurance
0121 212 5504

Geoff Whitefield FIRV, FNAG
geoff@fellows.co.uk

Photography

Claire Cleaver
Peter Long BA (Hons)
Rudolfs Cinovskis
Kieran Robinson

Marketing
0121 212 5500

Natasha Harris BA (Hons)
Natasha@fellows.co.uk

Howard Cheung BA (Hons)
howard@fellows.co.uk

Elizabeth McNab BA (Hons)
elizabeth@fellows.co.uk

Stephanie Jenkins BA (Hons)
stephaniej@fellows.co.uk

London Office

**Jewellery &
Watches Specialist**

Gabrielle Dakers BA (Hons)
gabrielle@fellows.co.uk

Natalie Evans
natalie.evans@fellows.co.uk

Specialist Departments

Jewellery
0121 212 6303

Emma Scriven BA (Hons), FGA, DGA
Heather Bailey
Bryony Meredith BA (Hons), FGA
Claire Stafford FGA, DGA
Georgina Kettle BA (Hons), FGA, DGA
Ben Randall BA (Hons), G.G., A.J.P.
Louise Ludlam BA (Hons), DGA, FGA
Jenny Darcy BA (Hons)
Leah England BA (Hons)
Emma Mogridge BA (Hons), FGA, DGA
Jennifer Muntz BA (Hons), Cert GA
Sophie Higgs
Simon Welsh A.J.P.
Natalie Craddock FGA, DGA
Liz Bailey BA (Hons)

Watches
0121 212 5506

Adrian Hailwood MA (Hons)
Conrad Cunningham BA (Hons)
Steven Yambo BA (Hons)
Michael Jagiela
Laura Mackay MA (Hons)
Philip Showell BA (Hons)
Craig Ledger

Antiques & Fine Art
0121 212 2131

Kevin Jackson
Mark Huddleston MA (Hons)
Jennifer Reid BA (Hons)

Silver & Coins
0121 212 6302

Naomi Wilson BA (Hons), DGA
Alison Jakeway MA MRICS
Sarah Isaacs BA (Hons)

Fellows

Established 1876

Travel Information



Situated in the heart of Birmingham's Jewellery Quarter, Fellows is easily accessible from all parts of the United Kingdom, Europe and beyond.

By Air

Birmingham International Airport has daily flights to most European capitals either direct or via Schiphol. A rail link, Birmingham International Station, connects to Birmingham New Street Station or a 25 minute taxi ride brings you to the salerooms.

By Rail

There is a half-hourly train service to and from London Euston to Birmingham New Street via Birmingham International Station. The saleroom is a five minute taxi ride from New Street Station, which is right in the centre of the City.

Directions to Fellows

From the M6, at junction 6 join the Aston Expressway (A38M), keep to the inside lane.

Take second exit, signed ring road (Convention Centre, and Indoor Arena).

At the roundabout (Pump Island) take the third exit, following the signs for the Ring Road, and continue through two sets of traffic lights to next roundabout, and take second exit (straight on).

At the next roundabout, straight over - first exit, under railway bridge - turn left into Pitsford Street, and continue up hill to T junction.

Turn LEFT on to Vyse Street then first RIGHT (Hockley Street), continue 50 metres to mini roundabout and follow right into Northampton Street which leads into Augusta Street.

Augusta House is approximately 150 metres on the left, with parking facilities to the front.

Where to stay

Birmingham has a full range of International hotels, and accommodation is available in a wide range of prices. Please call us for a list of suggestions.



Fellows

Established 1876

Augusta House | 19 Augusta Street | Birmingham B18 6JA
Tel 0121 212 2131 | Fax 0121 212 1249 | www.fellows.co.uk