



Maptitude[®] For the Web



The simplest way to publish spatial data and thematic maps on the web

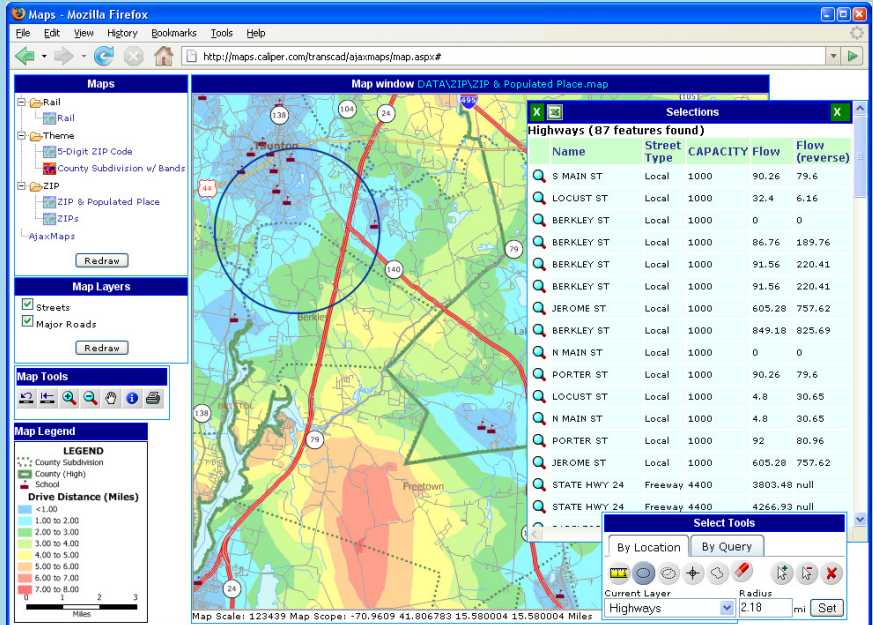
Mapitude for the Web™ has all of the tools you need to create compelling and attractive maps, plus special capabilities for designing and running interactive map applications and GIS web services on the World Wide Web. You can quickly create simple applications, without programming, by assembling existing templates and linking them to your geographic data. Experienced programmers can create complex web applications and web services by accessing a rich set of .NET classes and modifying the source code for the existing templates.

With Mapitude for the Web, you can quickly add mapping functions to your web site by following a few steps:

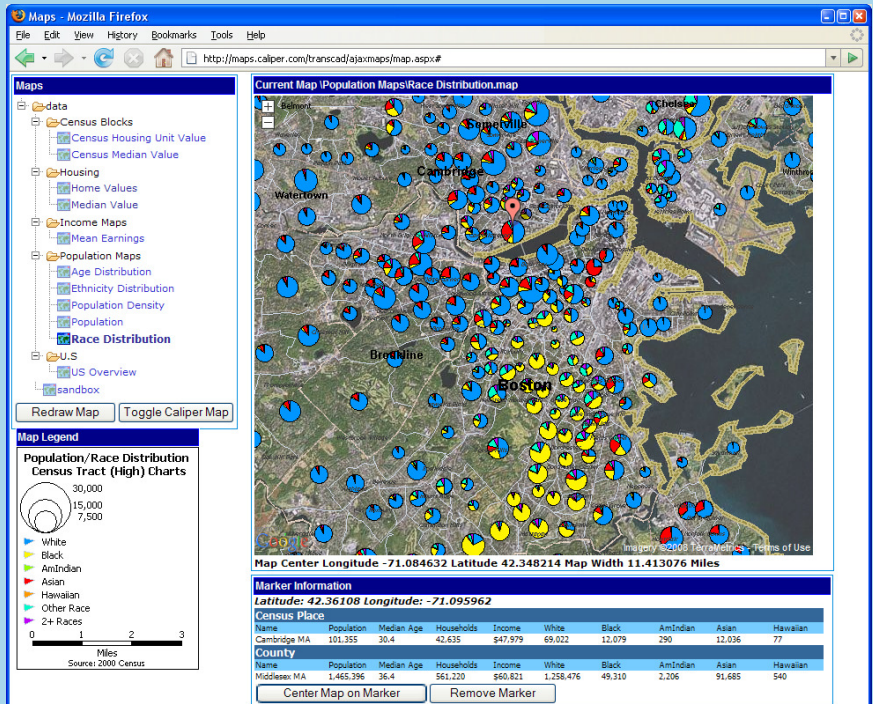
- **Add your geographic data:** Mapitude supports many input formats, including Excel, Access, SQL Server, Oracle, ESRI shapefiles, MAPInfo tab files and many imagery file formats. You can geocode your data by street address, ZIP Code or City and State directly in the software.
- **Create a thematic map:** Mapitude for the Web includes spatial analysis tools, wizards, and geographic boundary data you need to quickly and easily create thematic maps.
- **Choose a Mapplication:** Use one of the included Mapplications (application templates) to create a complete web application or a web service. New templates include Ajax applications and overlays with Google maps.
- **Set the parameters:** For each application component, choose how it will work and what geographic data it will use.
- **Test the application:** Use a local web server to make sure all of the settings are right.
- **Publish the application:** Copy the application to one or more servers running Mapitude for the Web so that anyone on the Internet can interact with your geographic data.

New Mapplications in Mapitude for the Web 5.0:

AjaxMaps Mapplication: A true Ajax GIS desktop in your browser, with tools for selecting map features by circle, point, shape, or query on any map layer, a tree-browser for viewing any map that you store in the web site data folder, and a table viewer that lets you download data directly to Excel.



GoogleOverlay Mapplication: A new application template that overlays any Mapitude thematic map with the Google Map control via the Google Map JavaScript API.



- **Modify the application:** Edit the application source code written in Javascript, HTML and ASP.NET to add functionality to your application.

Who Benefits from Maptitude for the Web

Mapitude for the Web is robust enough to meet the specific needs of all types of users:

Map designers can use all of the capabilities of Maptitude to design maps that communicate. You have complete control over the display settings of map features. Choose the style of features, the scales at which they are visible, and how and when they are labeled. MapWizard® automatic mapping technology helps you create color and pattern maps, dot-density maps, scaled-symbol maps, and maps with integrated pie charts and bar charts.

Web site designers can incorporate Maptitude for the Web controls into other web pages. You can modify the HTML tags or modify the graphic elements to maintain a consistent design within your web site.

Application developers can extend the functions provided by Maptitude for the Web by programming custom web controls and web services in Javascript, HTML, ASP.NET and XML. All of the powerful geographic and database functions of the

Caliper GIS Developer's Kit (GISDK™) can be included in a web application. In addition Maptitude for the Web integrates with Visual Studio.NET.

Custom Development

Caliper provides comprehensive GIS application development services based on Maptitude for the Web. We specialize in designing, implementing, and integrating GIS applications for large enterprises and government organizations. We develop:

- Enterprise web services and mashups
- Web applications
- Enterprise desktop applications
- Geographic databases

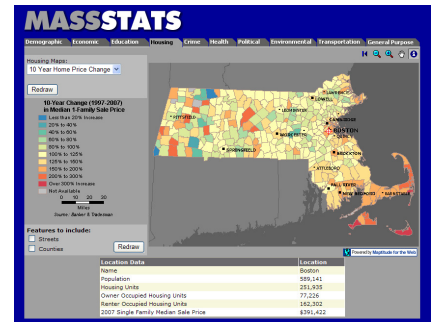
We support creating APIs in a variety of formats, including REST, SOAP, JSON, RSS, or your own custom XML. We can provide example code in a variety of server-side languages including PHP and ASP.NET (VB.NET and C#).

On the client-side, we integrate our Javascript library with jQuery, Dojo, and the Google map API.

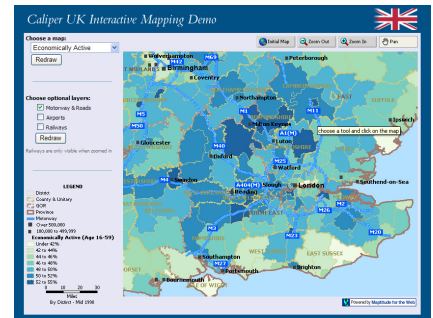
We can host a web service for you or deliver a web service platform that you can host on your own servers.

Licensing Maptitude for the Web

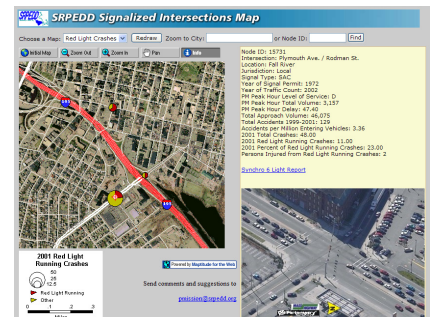
Mapitude for the Web Version 5.0 is licensed for a single computer. A one-year license costs \$5000, with annual renewals required after the first year. The license entitles the user to create, test, publish and run web applications on an intranet or the Internet using Maptitude for the Web. Additional licenses for additional computers are available at a discount for the first year. The license must be updated annually for Maptitude for the Web to continue to operate. Call Caliper at 617-527-4700 or visit www.caliper.com for more pricing information.



<http://www.mastats.com>



<http://www.caliper.com/uk/webmaptitudeexamples.htm>



<http://cabernet.caliper.com/maptitude/srpedd>

Server System Requirements:

- Windows Server 2003, Windows XP Professional, or Windows Vista Server 2008 or Workstation
- Microsoft Internet Information Services (IIS) version 5.0 or later
- Microsoft .NET framework version 2
- Available USB port
- DVD drive

Minimum Recommended Server Specifications:

- 2Ghz CPU
- 1GB RAM
- Video card capable of 1024x768 resolution (XGA or better), True Colors, and at least 16MB of dedicated video memory



Caliper Corporation

1172 Beacon Street, Suite 300 • Newton, MA 02461-9926
 Telephone: (617)527-4700 • E-mail: info@caliper.com
www.caliper.com