



ZebraDesigner™ CPCL Form Feed Format

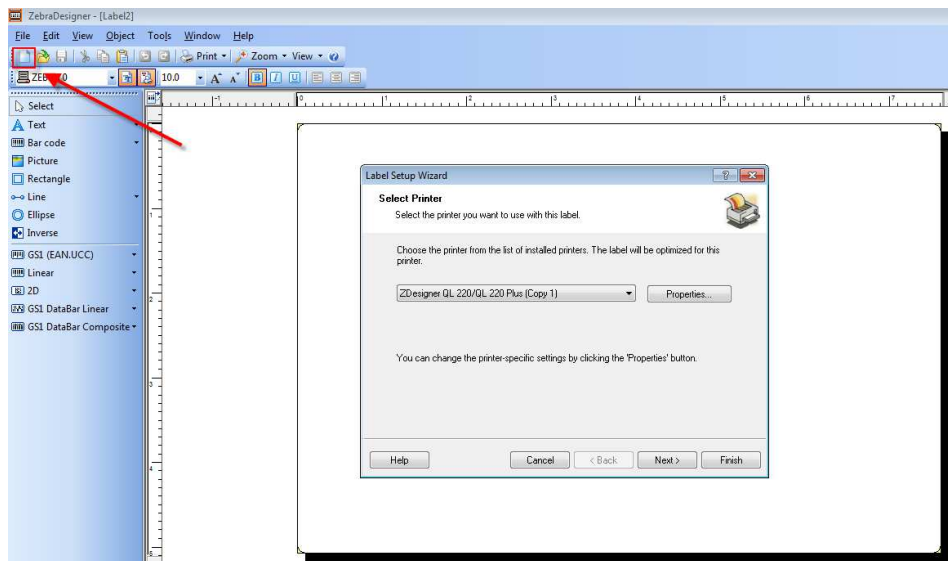
The ZebraDesigner program from the Zebra website will allow users to easily create a label format and then print to the printer or print to a file.

This document will show how to create a simple label, print to file, modify the file and send to the printer. At the end of this process you will be able to press the Feed button to print the label.

ZebraDesigner

Step 1 - Design

- After opening ZebraDesigner, Select the new (Paper icon) label button on the toolbar

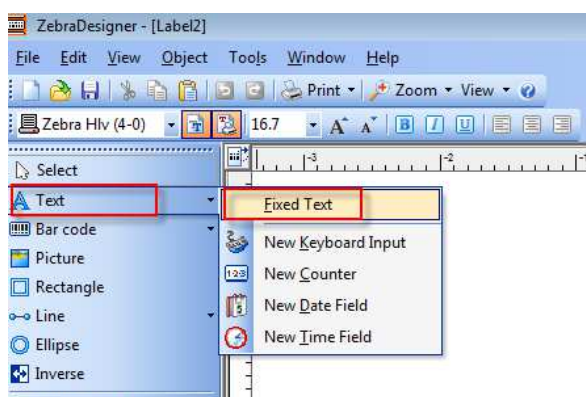


- You should get the Select Printer selection box and choose your mobile printer to use then Select Finish.

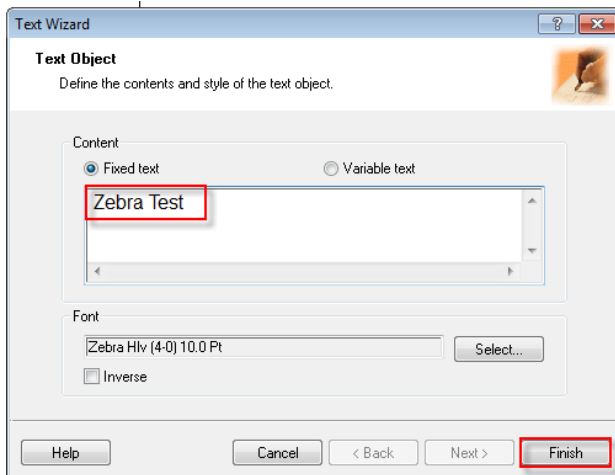
(I am using a QL 220plus so have selected ZDesigner QL 220/QL 220Plus)

- The blank label design screen will be displayed
- To add a Text field, Select Text and then click anywhere on the label

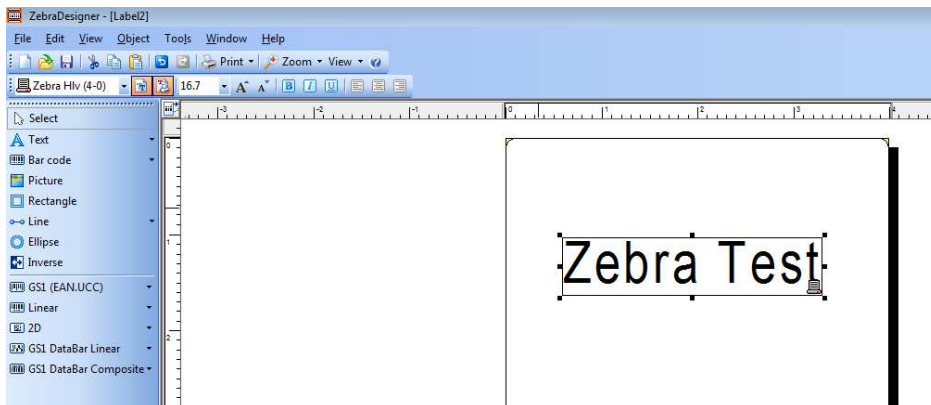
(Alternatively if you choose the drop-down arrow at the end of the Text field you will have a wider selection of options, then Select Fixed Text, then click anywhere on the label)



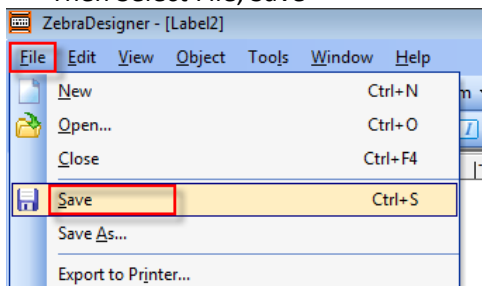
- In the text box enter the text you want to display on the label – I am using Zebra Test
- Once entered select Finish



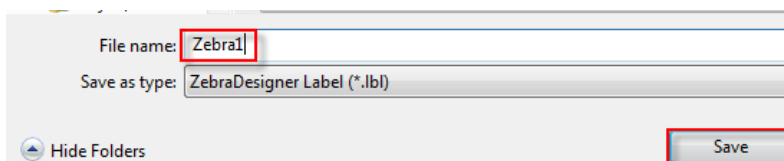
- The text field will now be displayed on the label, you can resize it or move it by picking up and dragging the field as required



- Once the label is built as required (making sure the label size is the same as the printer is using) Then Select File, Save

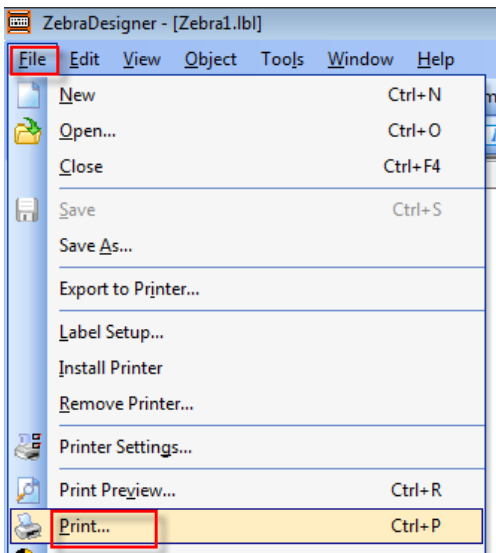


- Enter the name you want to store the label as, I am using Zebra1, then Select Save

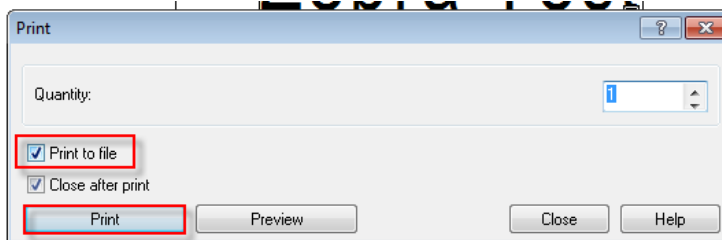


Step 2 – Print to File

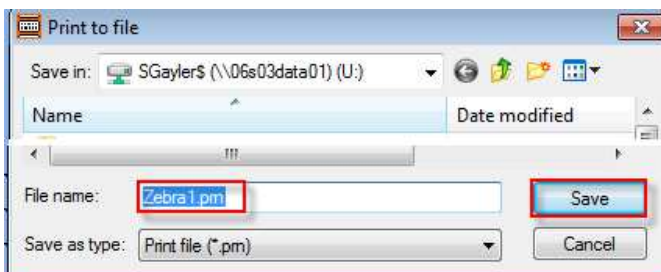
- Next we are printing to a text file, Select File, Print



- The Print dialog box should be displayed and ensure that the Print to file selection is ticked
- Then Select Print



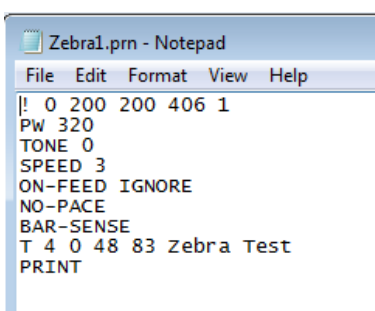
- The Print to file selection box will be displayed.
The default name to store is the name of the label.
If the filename and store location are correct Select Save



- Once saved you can close the ZebraDesigner program

Step 3 – Editing the CPCL File

- Using a text editor such as Notepad. Open the output file (I am using Zebra1.prn)



- Next we edit the file to add the Form Feed command
! DF FF.BAT

```

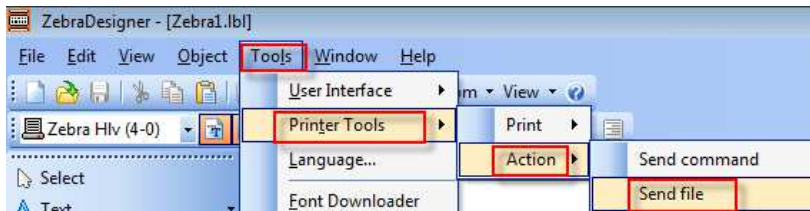
Zebra1b.prn - Notepad
File Edit Format View Help
! DF FF.BAT
! 0 200 200 406 1
PW 320
TONE 0
SPEED 3
ON-FEED IGNORE
NO-PACE
BAR-SENSE
T 4 0 48 83 Zebra Test
PRINT

```

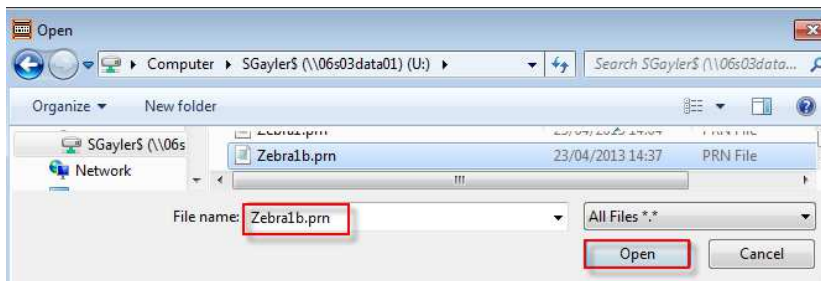
- Then save the file again (or save as and call it a different name)

Step 4 – Sending the Modified File to the Printer

- Reopen ZebraDesigner and your label
- Select the Tools option from the Toolbar, Then Printer Tools, Action, Send file



- Select the modified file and Select Open



- The file should have been sent to the printer and you can close ZebraDesigner

Step 5 – Testing the Printer

- To test the printer press the Blue Form Feed button and it should automatically print the label.
If you power cycle the printer and press the button again, it should also print the label.