

BUSH HOG®

XLRR1022/XLRR1226 PULL TYPE WHEEL V-RAKES

Published 12/11

MATERIAL HANDLING PARTS MANUAL

PARTS MANUAL SECTION 20



An Operator's Manual was shipped with the equipment . The Operator's Manual is an integral part of the safe operation of this machine and must be maintained with the unit at all times. **READ, UNDERSTAND, and FOLLOW** the Safety and Operation Instructions contained in this manual before operating the equipment. If the Operator's Manual is not with the equipment, contact your dealer or Bush Hog to obtain a Free copy before operating the equipment.



BUSH HOG®

2501 Griffin Ave.
Selma, AL 36703
Parts Ordering 1-800-304-2836
www.bushhog.com

ATENCIÓN!

LEA EL INSTRUCTIVO

Si No Lee Ingles, Pida Ayuda a Alguien
Que Si Lo Lea Para Que le Traduzca las
Medidas de Seguridad.



A MEMBER OF THE
ALAMO GROUP
ALWAYS ON THE CUTTING EDGE®

© 2011 Alamo Group Inc.

PARTS ORDERING GUIDE

The following instructions are offered to help eliminate needless delay and error in processing purchase orders for the equipment in this section.

1. The Parts Section is prepared in logical sequence and grouping of parts that belong to the basic machine featured in this manual. Part Numbers and Descriptions are given to help locate the parts and quantities required.
2. The Purchase Order must include the name and address of the person or organization ordering the parts, who should be charged, and if possible, the serial number of the machine for which the parts are ordered.
3. The Purchase Order must clearly list the quantity of each part, the complete and correct part number (be sure to include all periods), and the basic name of the part.
4. The Manufacturer reserves the right to substitute parts where applicable.
5. Some parts are unlisted items which are special production items not normally stocked and are subject to special handling. Request a quotation for such parts before sending a Purchase Order.
6. The Manufacturer reserves the right to change prices without prior notice.



For maximum safety and to guarantee optimum product reliability, always use genuine BUSH HOG Parts. The use of inferior replacement parts may cause premature or catastrophic failure which could result in serious injury or death. Direct any questions regarding parts to:

BUSH HOG
2501 Griffin Ave.
Selma, AL 36703
www.bushhog.com
Contact Us
800-304-2836



BUSH HOG®

To the Owner/Operator/Dealer

All implements with moving parts are potentially hazardous. There is no substitute for a cautious, safe-minded operator who recognizes the potential hazards and follows reasonable safety practices. The manufacturer has designed this implement to be used with all its safety equipment properly attached to minimize the chance of accidents.

BEFORE YOU START! Read the safety messages on the implement and shown in your manual. Observe the rules of safety and common sense!

DANGER

FAILING TO FOLLOW SAFETY MESSAGES AND OPERATING INSTRUCTION CAN CAUSE SERIOUS BODILY INJURY OR EVEN DEATH TO OPERATOR AND OTHERS IN THE AREA.

<p>1.</p> 	<p>2. NO RIDERS. NO CHILDREN OPERATORS</p> 	<p>3. USE SAFETY SHOES, HARD HAT, SAFETY GLASSES, SEAT BELTS, ROPS & OPS.</p> 	<p>4. BLOCK UP SECURELY BEFORE WORKING UNDER.</p> 
---	--	--	---

1. Study and understand Operator's Manuals, Safety Decals, and Instructional Decals for tractor and implement to prevent misuse, abuse, and accidents. Practice before operating in a confined area or near passersby.
 - Learn how to stop engine suddenly in an emergency. Be alert for passersby and especially children.
2. Allow no children on or near folding mower or tractor. Allow no riders on tractor or implement. Falling off may cause serious injury or death from being run over by tractor or mower or contact with rotating blades.
3. Operate only with tractor having Roll-Over Protective Structure (ROPS) and with seat belt securely fastened to prevent injury and possible death from falling off or tractor overturn.
 - Personal Protective Equipment such as Hard Hat, Safety Glasses, Safety Shoes, & Ear Plugs are recommended.
4. Block up or support raised machine and all lifted components securely before putting hands or feet under or working underneath any lifted component to prevent crushing injury or death from sudden dropping or inadvertent operation of controls. Make certain area is clear before lowering or folding.
5. Before transporting, put Lift Lever in detent or full-lift position. Install Transport Safety Devices securely on folding mowers. Put Booms securely in Transport Rest.
 - Folding and Boom Mowers have raised center of gravity. Slow down when turning and on hillsides.
6. Make certain that SMV sign, warning lights, and reflectors are clearly visible. Follow local traffic codes.
7. Never operate with Cutting Head or Folding Section raised if passersby, bystanders, or traffic are in the area to reduce possibility of injury or death from objects thrown by Blades under Guards or mower structure.
8. Before dismounting, secure implement in transport position or lower to ground.
 - Put tractor in park position or set brake, disengage PTO, stop engine, remove key, and wait until noise of rotation has ceased to prevent crushing by entanglement in rotating parts which could cause injury or death.
 - Never mount or dismount a moving vehicle. Crushing from runover may cause serious injury or death.

<p>5. TRANSPORT SAFELY, LOCK UP.</p> 	<p>6. USE SMV, LIGHTS, & REFLECTORS.</p> 	<p>7. DO NOT OPERATE WITH CUTTER OR WING RAISED</p> 	<p>8. DO NOT MOUNT OR DISMOUNT WHILE MOVING.</p> 
--	--	--	--

02967827

WARRANTY INFORMATION:

Read and understand the complete Warranty Statement found in this Manual. Fill out the Warranty Registration Form in full and return it to within 30 Days. Make certain the Serial Number of the Machine is recorded on the Warranty Card and on the Warranty Form that you retain.

LIMITED WARRANTY



Bush Hog warrants to the original purchaser of any new Bush Hog equipment, purchased from an authorized Bush Hog dealer, that the equipment be free from defects in material and workmanship for a period of one (1) year for non-commercial, state and municipalities' use and ninety (90) days for commercial use from date of retail sale. The obligation of Bush Hog to the purchaser under this warranty is limited to the repair or replacement of defective parts.

Replacement or repair parts installed in the equipment covered by this limited warranty are warranted for ninety (90) days from the date of purchase of such part or to the expiration of the applicable new equipment warranty period, whichever occurs later. Warranted parts shall be provided at no cost to the user at an authorized Bush Hog dealer during regular working hours. Bush Hog reserves the right to inspect any equipment or parts which are claimed to have been defective in material or workmanship.

DISCLAIMER OF IMPLIED WARRANTIES & CONSEQUENTIAL DAMAGES

Bush Hog's obligation under this limited warranty, to the extent allowed by law, is in lieu of all warranties, implied or expressed, **INCLUDING IMPLIED WARRANTIES OF MERCHANTABILITY AND FITNESS FOR A PARTICULAR PURPOSE** and any liability for incidental and consequential damages with respect to the sale or use of the items warranted. Such incidental and consequential damages shall include but not be limited to: transportation charges other than normal freight charges; cost of installation other than cost approved by Bush Hog; duty; taxes; charges for normal service or adjustment; loss of crops or any other loss of income; rental of substitute equipment, expenses due to loss, damage, detention or delay in the delivery of equipment or parts resulting from acts beyond the control of Bush Hog.

THIS LIMITED WARRANTY SHALL NOT APPLY:

1. To vendor items which carry their own warranties, such as engines, tires, and tubes.
2. If the unit has been subjected to misapplication, abuse, misuse, negligence, fire or other accident.
3. If parts not made or supplied by Bush Hog have been used in connection with the unit, if, in the sole judgement of Bush Hog such use affects its performance, stability or reliability.
4. If the unit has been altered or repaired outside of an authorized Bush Hog dealership in a manner which, in the sole judgement of Bush Hog, affects its performance, stability or reliability.
5. To normal maintenance service and normal replacement items such as gearbox lubricant, hydraulic fluid, worn blades, or to normal deterioration of such things as belts and exterior finish due to use or exposure.
6. To expendable or wear items such as teeth, chains, sprockets, belts, springs and any other items that in the company's sole judgement is a wear item.

NO EMPLOYEE OR REPRESENTATIVE OF BUSH HOG IS AUTHORIZED TO CHANGE THIS LIMITED WARRANTY IN ANY WAY OR GRANT ANY OTHER WARRANTY UNLESS SUCH CHANGE IS MADE IN WRITING AND SIGNED BY BUSH HOG'S SERVICE MANAGER, 2501 GRIFFIN AVE., SELMA, ALABAMA 36703.



Record the model number, serial number and date purchased. This information will be helpful to your dealer if parts or service are required.

MODEL NUMBER _____

SERIAL NUMBER _____

DATE OF RETAIL SALE _____

MAKE CERTAIN THE WARRANTY
HAS BEEN FILED WITH BUSH HOG
SELMA, ALABAMA

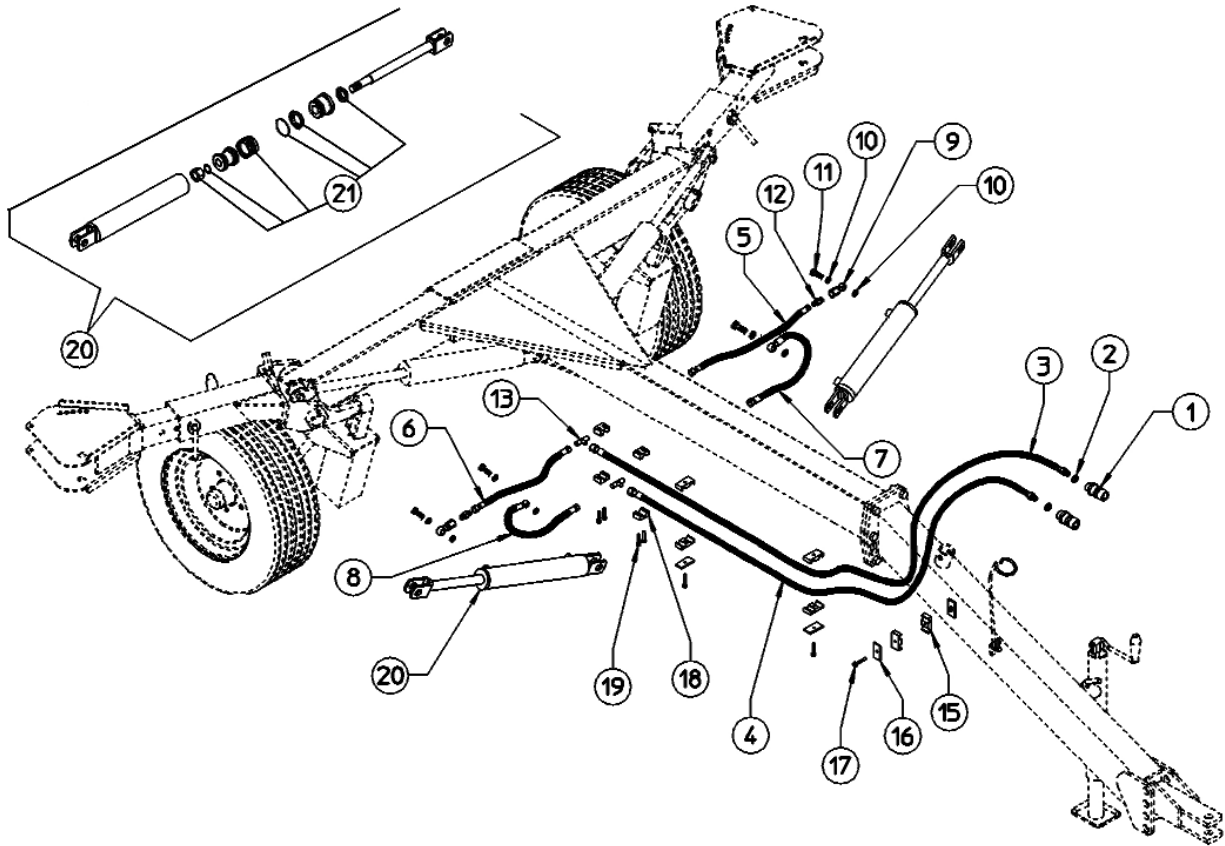
ALPHABETICAL TABLE OF CONTENTS

XLRR PULL TYPE WHEEL V-RAKES

ITEM	PAGE NUMBER
Center Wheel Kit Option - XLRR1022/XLRR1226.	20-1-6, 20-1-7
Decals - Bush Hog Marking	20-1-16
General Assembly - XLRR1022.	20-1-2, 20-1-3
General Assembly - XLRR1226.	20-1-4, 20-1-5
Hydraulics - XLRR1022/XLRR1226	20-1-1
Hydraulic Wind Row Adjustment Kit Option - XLRR1022	20-1-8, 20-1-9
Hydraulic Wind Row Adjustment Kit Option - XLRR1226	20-1-12, 20-1-13
Wheel & Arm Assembly - XLRR1022	20-1-10, 20-1-11
Wheel & Arm Assembly - XLRR1226	20-1-14, 20-1-15

HYDRAULICS

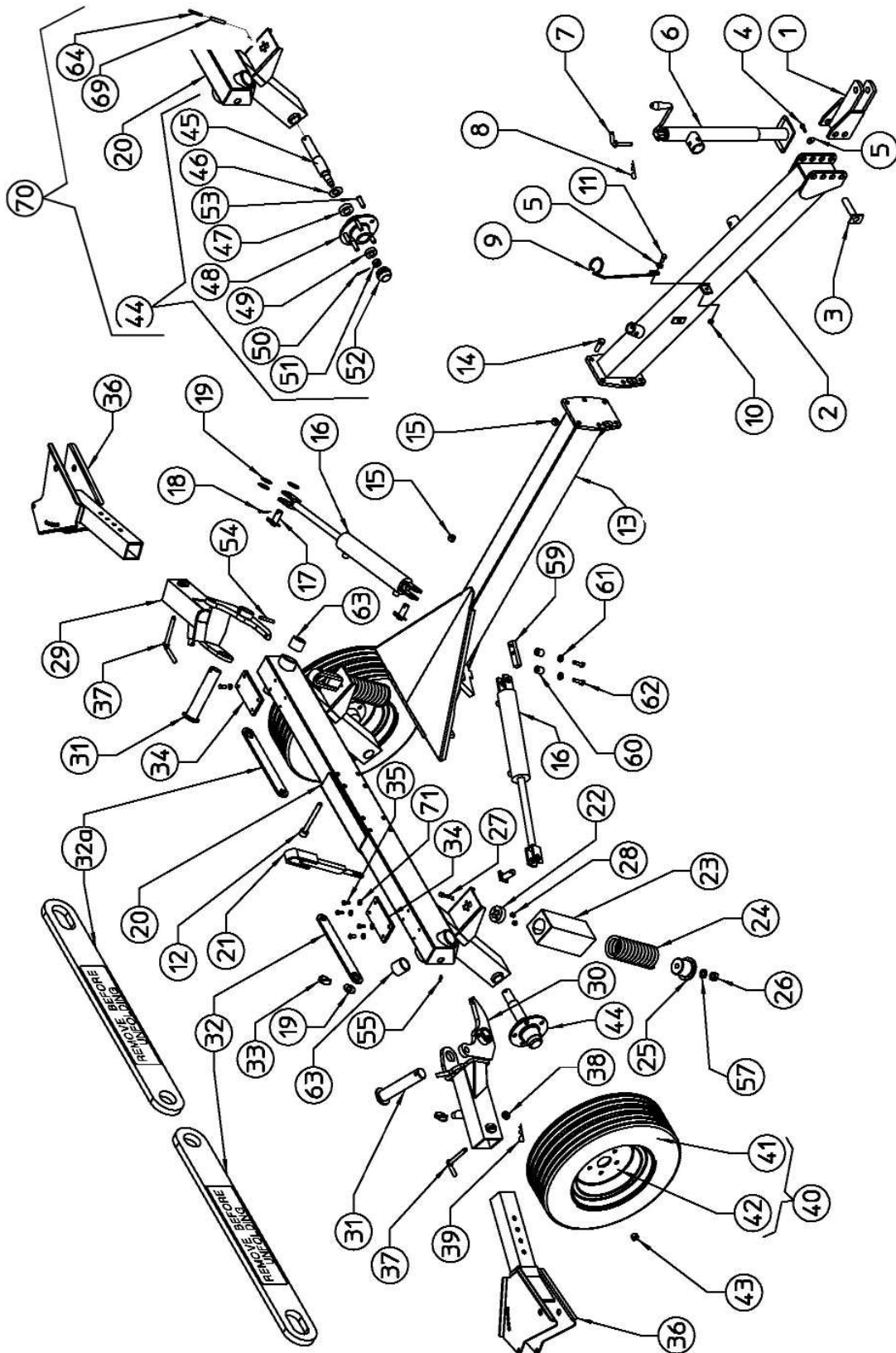
MODELS XLRR1022, XLRR1226



REF. NO.	PART NO.	DESCRIPTION	QTY.
1	3637102	Male Coupling Tip	2
2	3638408	Copper Washer 1/2" ID	2
3	3697204	Hose SAE100 R7 1/4" X 169.29" L4300 FD-MD	1
	3697205	Hose SAE100 R7 1/4" X 200.49" L5100 FD-MD	1
4	3697206	Hose SAE100 R7 1/4" X 163.39" L4150 FD-MD	1
	3697207	Hose SAE100 R7 1/4" X 194.88" L4950 FD-MD	1
5	3697208	Hose SAE100 R7 1/4" X 16.73" L425 FD-FD	1
6	3697209	Hose SAE100 R7 1/4" X 21.46" L545 FD-FD	1
7	3697210	Hose SAE100 R7 1/4" X 18.70" L475 FD-OC	1
8	3697211	Hose SAE100 R7 1/4" X 16.54" L420 FD-OC	1
9	3697117	Adapter Hydraulic Fitting	2
10	3638404	Copper Washer 17 x 22 x 1.4	8
11	3637100	Fitting, Hydraulic	4
12	3667143	Fitting, Hydraulic	2
13	3697116	Adapter, Hydraulic Tee 4MBSPP	2
15	3698428	Collar, Hose	6
16	3698429	Plate, Hose Collar	3
17	02963652	Capscrew M6 x 35 Din 931	3
18	3678403	Collar, Hose-M14	4
19	N/A	Capscrew M6 x 25 TCEI	4
20	3697115	Cylinder	2
21	3667147	Kit, Seal	1

GENERAL ASSEMBLY

MODELS XLRR1022



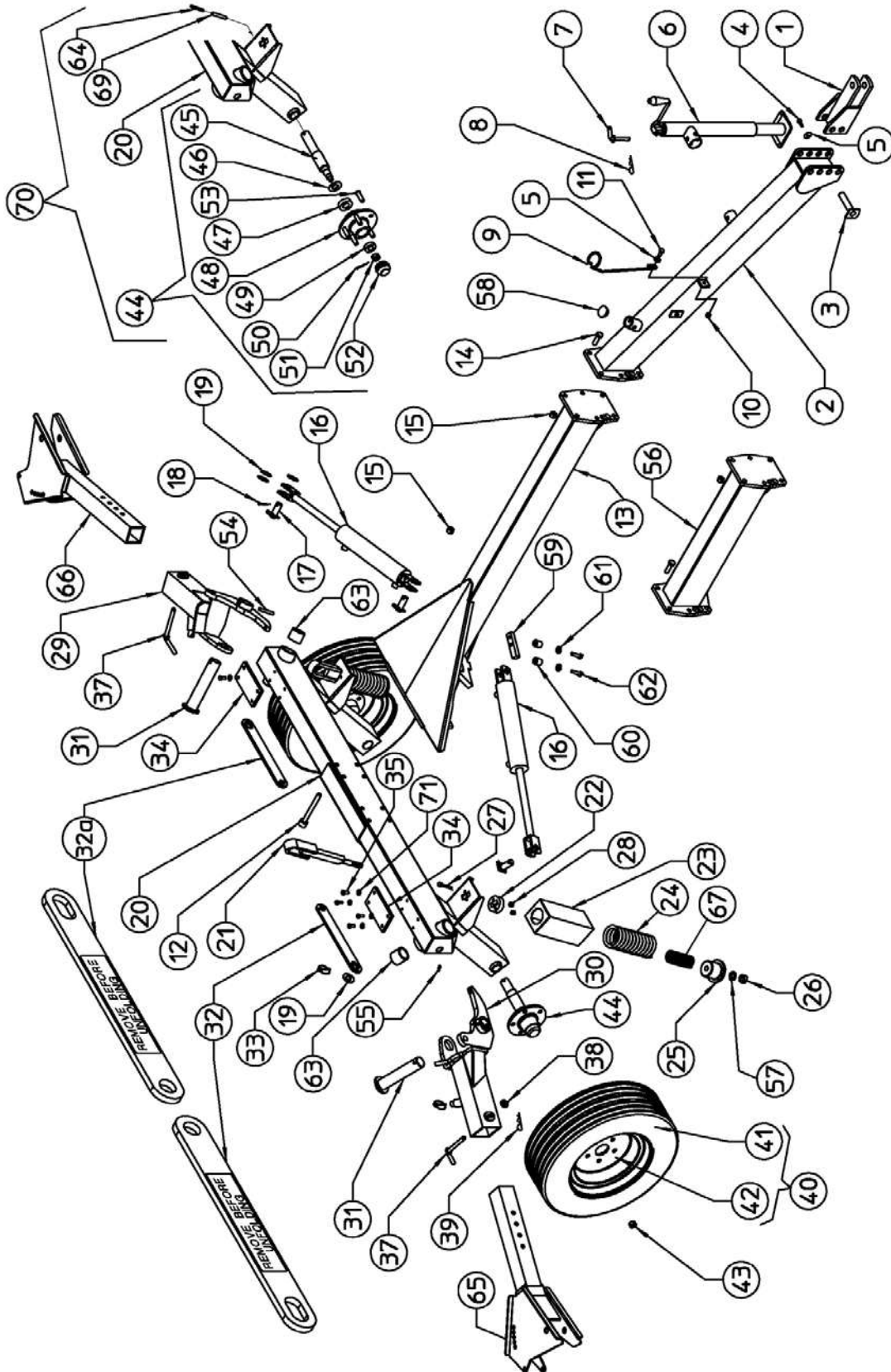
GENERAL ASSEMBLY

MODELS XLRR1022

REF. NO.	PART NO.	DESCRIPTION	QTY.
1	3690328	Hitch	1
2	3690329	Drawbar, Front	1
3	3660235	Pin	2
4	00762395	Capscrew M12 x 20	2
5	3668407	Flatwasher M12 x 36	3
6	3668627	Parking Stand	1
7	3638602	Pin	1
8	3638400	Hairpin, Cotter M3	1
9	3697567	Support, Hose	1
10	00772648	Nut, Toplock	1
11	00754565	Capscrew, Socket Head M12 x 35	1
12	610913C8	Capscrew M16 x 140	8
13	3690330	Drawbar, Main	1
14	61091C8	Capscrew M16 x 50	6
15	9143007	Nut, Toplock	14
16	3697115	Cylinder, Hydraulic	2
17	3690331	Pin, Cylinder	4
18	70502	Cotter Pin	4
19	00776217	Washer M25	16
20	3690397	Frame	1
21	3690333	Tie Rod	2
22	3697568	Slider	2
23	3690334	Hood, Spring	2
24	3697424	Spring, Stabilizer	2
25	3690335	Plug, Spring	2
26	70099C	Nut, Toplock	2
27	61053C8	Capscrew M8 x 45	4
28	70093C	Nut, Toplock	4
29	3690336	L.H. Arm, Inner	1
30	3690337	R.H. Arm, Inner	1
31	3690338	Pin, Inner Arm	2
32	3697569	RH Transport Arm With Decal	1
32a	3697570	LH Transport Arm With Decal	1
33	3698426	Pin, Linch-M8 x 56	4
34	3697571	Block, Inner Arm	2
35	71556C10	Capscrew M8 x 20	4
36	3690339	Arm, Outer	2
37	3690340	Pin	2
38	701515C	Flatwasher, M16	2
39	-----	Split Pin BC4	2
40	3630103	Tire Assy	2
41	3637800	Tire	2
42	3637600	Rim	2
43	3638406	Nut M16 x 1.5	10
44	3690117	Hub Assy	2
45	3697572	Spindle, Weld-On	2
46	3666800	Seal	2
47	3666000	Inner Bearing	2
48	3667505	Hub	2
49	3666001	Bearing, Outer	2
50	07487	Cotter Pin	2
51	3668408	Slotted Nut	2
52	3666700	Cap	2
53	3668414	Stud, Wheel Hub	2
54	703715W	Roll Pin	2
55	2568408	Grease Fitting M8	2
57	-----	Washer M21/37x3	2
58	-----	Plug	1
59	3697590	Plate	2
60	3697430	Spring Rubber	4
61	701512C	Washer 10.5	4
62	61063C8	Screw M10 x 45	4
63	3637521	Bushing	4
64	3698434	Spring Pin M7 x 60	2
69	703714W	Spring Pin M12 x 60	2
70	3690126	Frame w/Hubs	1
71	70234C	Washer M 9 -21 x2	8

GENERAL ASSEMBLY

MODELS XLRR1226



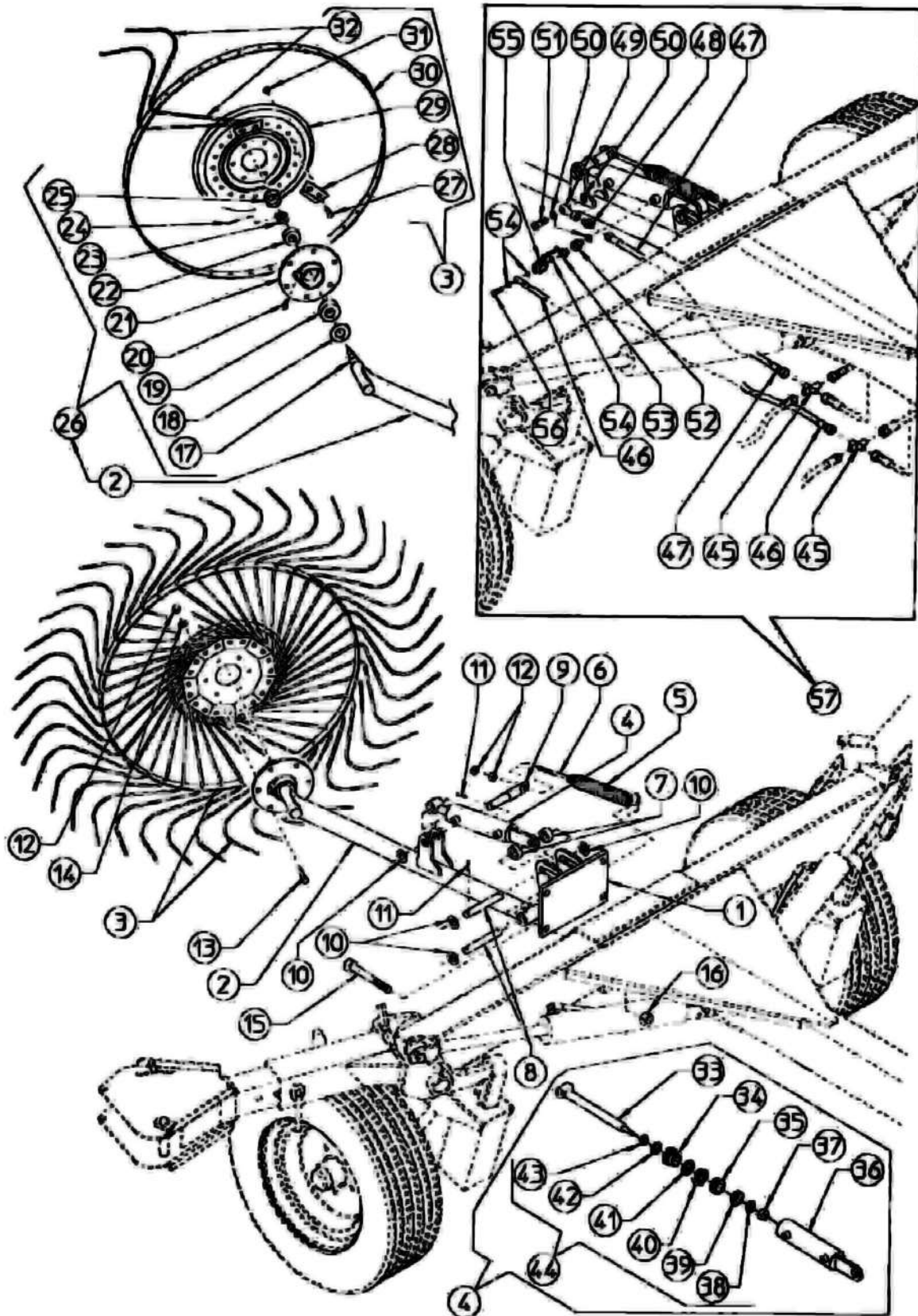
GENERAL ASSEMBLY

MODELS XLRR1226

REF. NO.	PART NO.	DESCRIPTION	QTY.
1	3690328	Hitch	1
2	3690329	Drawbar, Front	1
3	3660235	Pin	2
4	00762395	Capscrew M12 x 20	2
5	3668407	Flatwasher M12 x 36	3
6	3668627	Parking Stand	1
7	3638602	Pin	1
8	3638400	Hairpin, Cotter M3	1
9	3697567	Support, Hose	1
10	00772648	Nut, Toplock	1
11	00754565	Capscrew, Socket Head M12 x 35	1
12	610913C8	Capscrew M16 x 140	8
13	3690330	Drawbar, Main	1
14	61091C8	Capscrew M16 x 50	6
15	9143007	Nut, Toplock	14
16	3697115	Cylinder, Hydraulic	2
17	3690331	Pin, Cylinder	4
18	70502	Cotter Pin	4
19	00776217	Washer M25	16
20	3690397	Frame	1
21	3690333	Tie Rod	2
22	3697568	Slider	2
23	3690334	Hood, Spring	2
24	3697424	Spring, Stabilizer	2
25	3690335	Plug, Spring	2
26	70099C	Nut, Toplock	2
27	61053C8	Capscrew M8 x 45	4
28	70093C	Nut, Toplock	4
29	3690398	L.H. Arm, Inner	1
30	3690399	R.H. Arm, Inner	1
31	3690338	Pin, Inner Arm	2
32	3697569	RH Transport Arm With Decal	1
32a	3697570	LH Transport Arm With Decal	1
33	3698426	Pin, Linch-M8 x 56	4
34	3697571	Block, Inner Arm	2
35	71556C10	Capscrew M8 x 20	4
37	3690340	Pin	2
38	701515C	Flatwasher, M16	2
39	-----	Split Pin BC4	2
40	3630103	Tire Assy	2
41	3637800	Tire	2
42	3637600	Rim	2
43	3638406	Nut M16 x 1.5	10
44	3690117	Hub Assy	2
45	3697572	Spindle, Weld-On	2
46	3666800	Seal	2
47	3666000	Inner Bearing	2
48	3667505	Hub	2
49	3666001	Bearing, Outer	2
50	07487	Cotter Pin	2
51	3668408	Slotted Nut	2
52	3666700	Cap	2
53	3668414	Stud, Wheel Hub	2
54	703715W	Roll Pin	2
55	2568408	Grease Fitting M8	2
57	-----	Washer 21/37x3	2
58	-----	Plug	1
59	3697590	Plate	2
60	3697430	Spring Rubber	4
61	701512C	Washer 10.5	4
62	61063C8	Screw M10 x 45	4
63	3637521	Bushing	4
64	3698434	Spring Pin M7 x 60	2
65	3690364	Inner Arm R.H.	1
66	3690365	Inner Arm L.H.	1
67	3697426	Spring	2
68	3697577	Spacer	2
69	703714W	Spring Pin M12 x 60	2
70	3690126	Frame w/Hubs	1
71	70234C	Washer M 9 -21 x2	8

CENTER WHEEL KIT OPTION

MODELS XLRR1022, XLRR1226

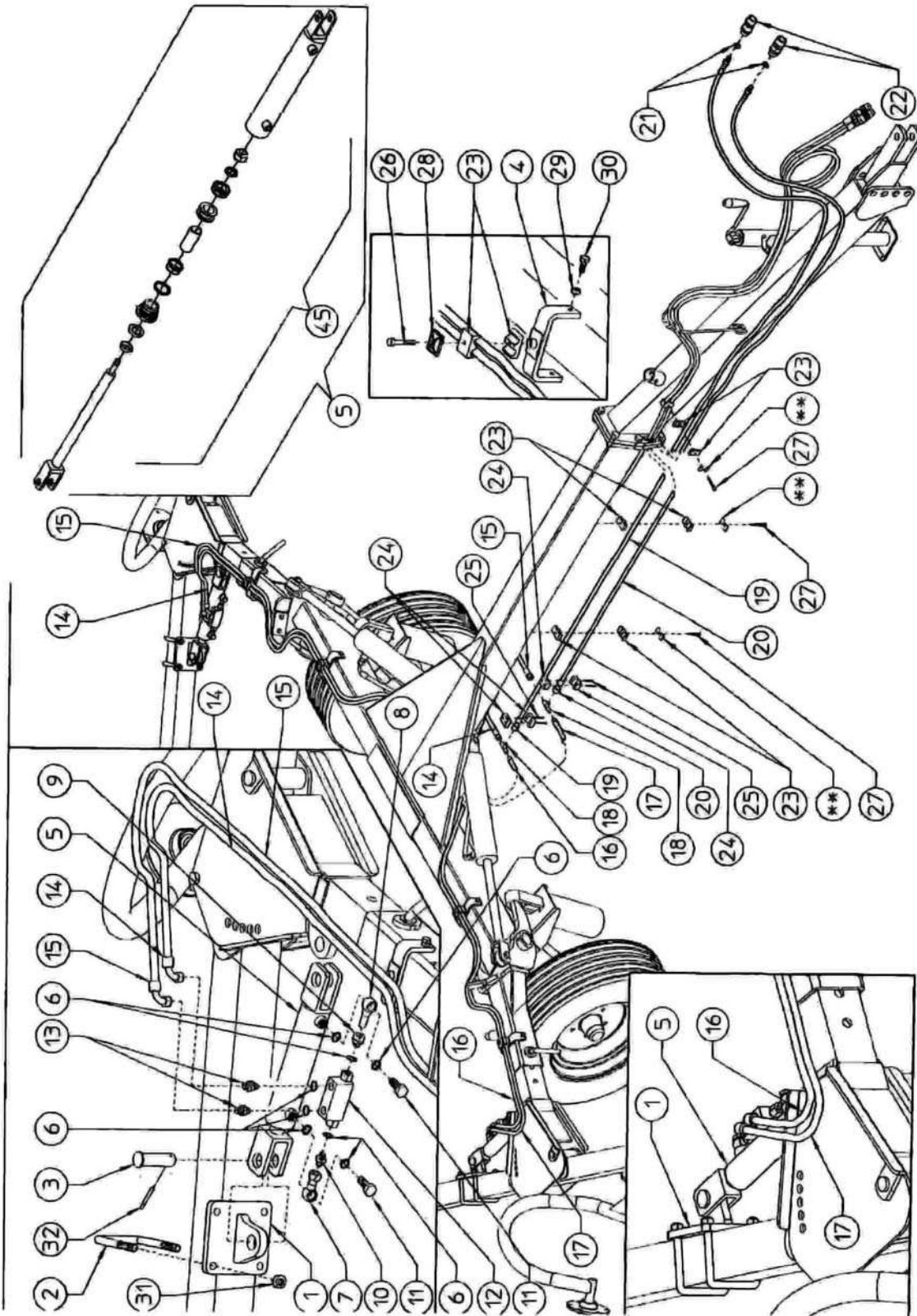


CENTER WHEEL KIT OPTION**MODELS XLRR1022, XLRR1226**

REF. NO.	PART NO.	DESCRIPTION	QTY.
1	3690356	Support, Wheel Arm	1
2	3690357	Arm, Wheel W/Hub	1
3	3660103	Wheel Assy L.H. (Tine Dia 0.276" 7mm)	1
4	3697118	Cylinder, Hydraulic	1
5	3697425	Spring, Extension	1
6	3667509	Tie Rod	1
7	3697574	Spacer, Cylinder	2
8	3697575	Pin, Wheel Arm Support	2
9	3697576	Pin	1
10	N/A	Washer, Flat	5
11	703413W	Roll Pin	5
12	00755949	Nut M10	8
13	61368C8	Capscrew, M10 x 25	6
14	00755954	Lockwasher, M10 Spring	6
15	610914C8	Capscrew M16 x 150	4
16	9143007	Nut, Toplock	4
17	3637509	Spindle, Weld-On	1
18	3736800	Seal	1
19	3736000	Bearing Set	1
20	2568408	Grease Nipple M8	1
21	3637504	Wheel Hub	1
22	3736001	Bearing Set	1
23	700728C	Self-Locking Nut M18 x 1.5	1
24	70477	Cotter Pin	1
25	3736700	Hub Cap	1
26	3630100	Hub Assy	1
27	70631C4	Carriage Bolt M10 x 25	20
28	3637508	Tine Clamp	10
29	3637505	Flange	1
30	N/A	Rim	1
31	00765676	Nut, Toplock	20
32	3667522	Tine, Center Wheel	40
44	3697119	Kit, Seal	1
45	3697120	Adapter, 1/4 Hydraulic Cross Fitting	2
46	3697218	Assy, Hose 1/4 x 28.74 (730MM)	1
47	3697219	Assy, Hose 1/4 x 25.20 (640MM)	1
48	3667143	Fitting, Hydraulic	1
49	3697117	Adapter, Hydraulic Fitting	1
50	3678416	Copper Washer 3/8"	3
51	3637100	Fitting, Hydraulic	1
52	3667144	Fitting, Hydraulic	1
53	3677104	Fitting, Hydraulic Nipple Adapter	1
54	3678417	Copper Washer 1/4"	3
55	3697121	Valve, Hydraulic Ball-1/4" (F)	1
56	3677102	Bolt, Hydraulic	1
57	N/A	Hydraulic Kit	1
	N/A	Complete Kit	1

HYDRAULIC WIND ROW ADJUSTMENT KIT OPTION

MODEL XLRR1022

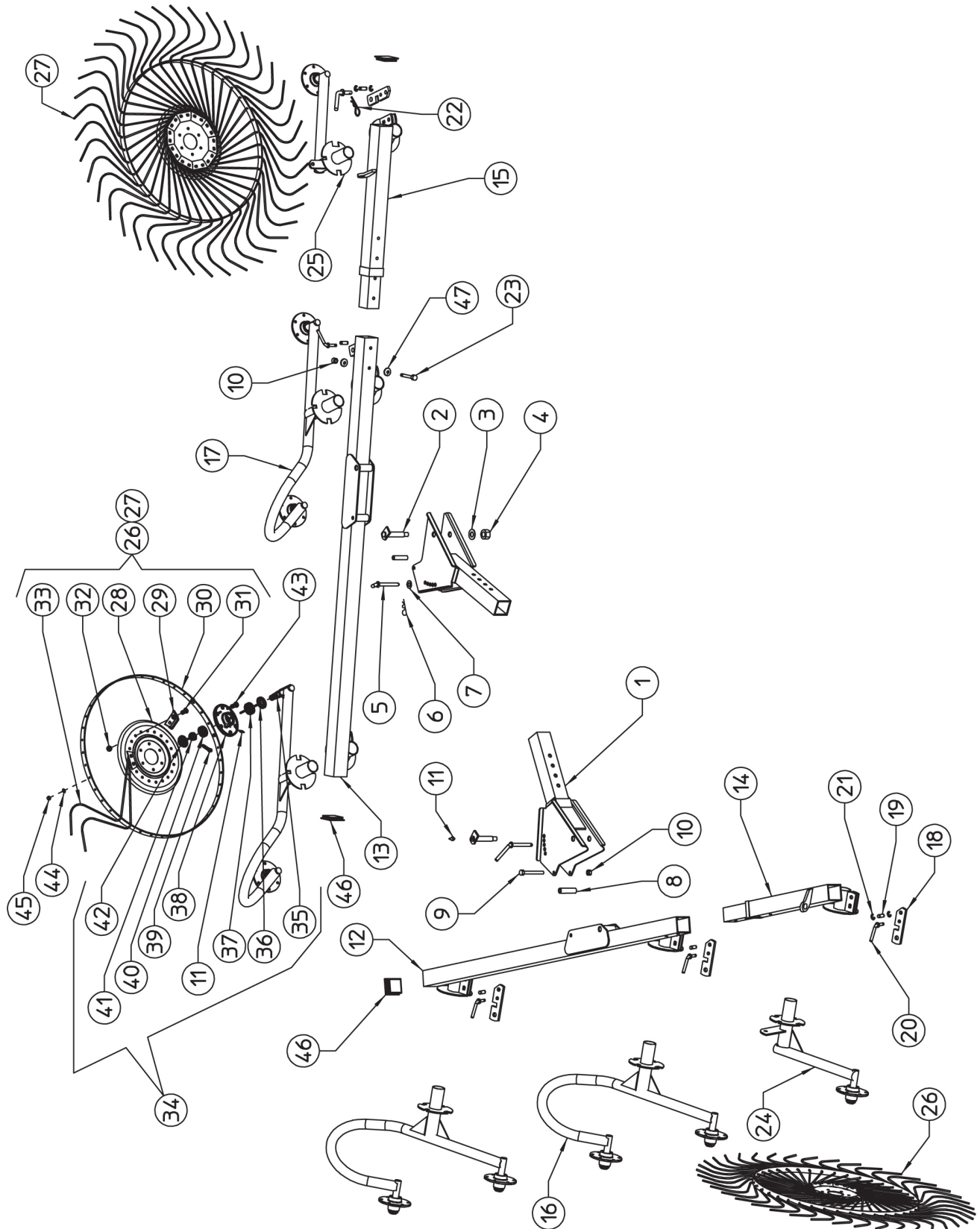


HYDRAULIC WIND ROW ADJUSTMENT KIT OPTION**MODEL XLRR1022**

REF. NO.	PART NO.	DESCRIPTION	QTY.
1	3690358	Cylinder Support	2
2	3698430	U-Bolt M12	4
3	3698431	Pin, Cylinder	4
4	3690359	Hose Support	4
5	3697122	Cylinder, Hydraulic	2
6	3678400	Copper Washer	16
7	3697123	Fitting 1/4", Adapter, Hydraulic	2
8	3697124	Adapter, Hydraulic Fitting	2
9	3697125	Fitting Male 1/4" Female M12	2
10	3697126	Nipple 1/4"-1/4" With Orifice 0.6	2
11	3677102	Bolt, Hydraulic	4
12	3697127	Lock Valve 1/4"	2
13	3697128	Hydraulic Adapter, 1/4"-1/4"	4
14	3697214	Hose 1/4" Length 1900MM-74.80"	1
15	3697215	Hose 1/4" Length 2150MM-84.65"	1
16	3697216	Hose 1/4" Length 2000MM-78.74"	1
17	3697217	Hose 1/4" Length 2050MM-80.71"	1
18	3697116	Fitting Male 1/4" Hydraulic Adapter Tee	2
19	3697204	Hose 1/4" Length 4300MM-169.29"	1
20	3697206	Hose 1/4" Length 4150MM-163.38"	1
21	3638408	Copper Washer 1/2" ID	2
22	3637102	Rapid Coupling 1/2"	2
23	3698428	Double Hose Collar	14
24	3678403	Hose Collar M14	4
25	N/A	Capscrew M6 x 60	4
26	02963652	Capscrew M6 x 35	4
27	N/A	Capscrew M6 x 60	3
28	3698429	Collar Clamp	4
29	00755934	Nut M8 Din 934	8
30	3698432	Capscrew M8 x 25 (Particular)	8
31	00772648	Nut M12 Din 980	8
32	703413W	Roll Pin M6 x 36	4
45	3697119	Seal Kit	2

WHEEL AND ARM ASSEMBLY

MODEL XLRR1022

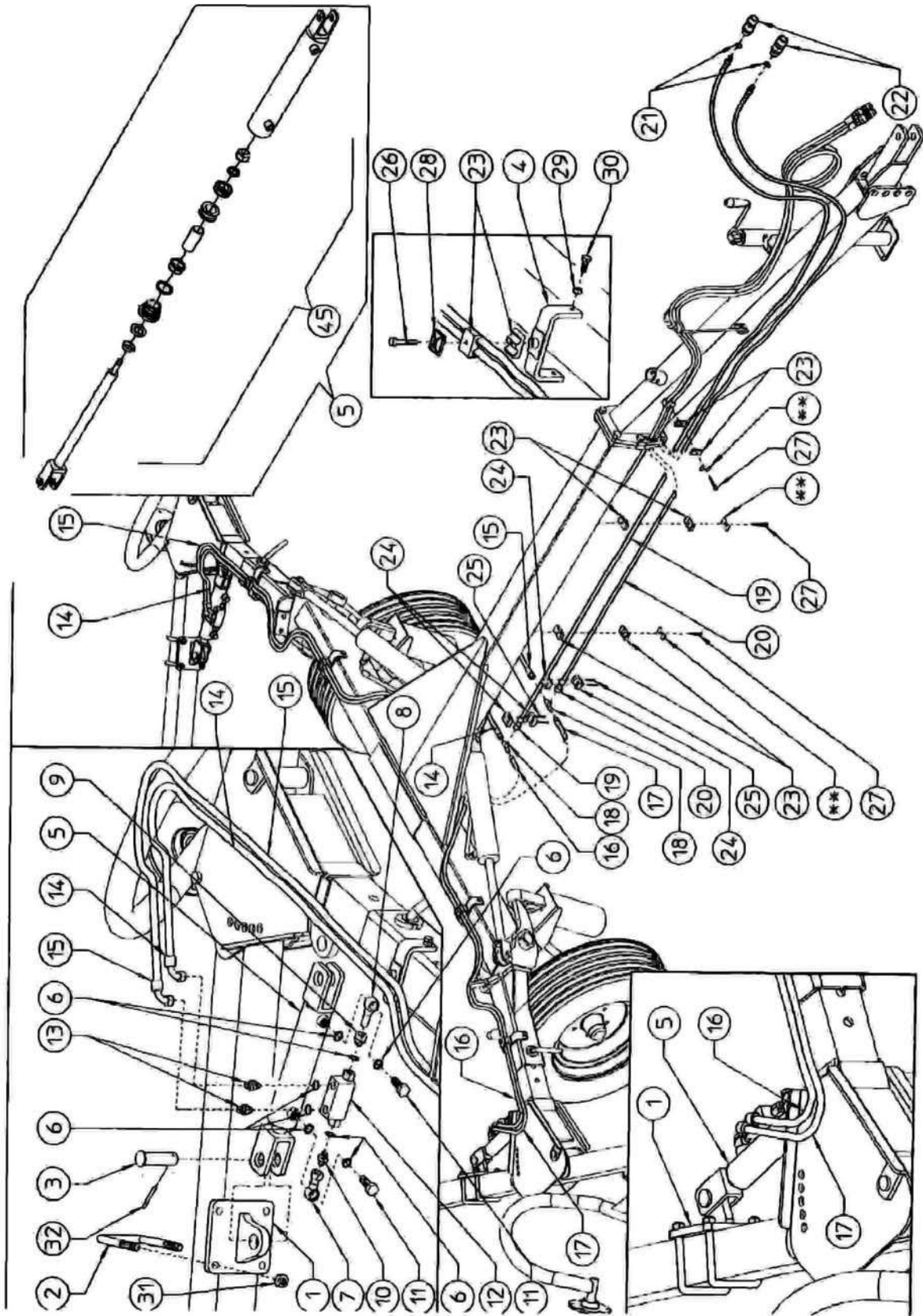


WHEEL AND ARM ASSEMBLY**MODEL XLRR1022**

REF. NO.	PART NO.	DESCRIPTION	QTY.
1	3690339	Arm	2
2	3690342	Pin	2
3	N/A	Washer M21 Din 125a	2
4	70099C	Nut, Toplock	2
5	3690343	Pin	2
6	N/A	Split Pin BC4	2
7	701515C	Flatwasher M16	2
8	3697573	Bushing	2
9	N/A	Capscrew M12 x 120	2
10	00772648	Nut, Toplock M12	6
11	2568408	Grease Nipple M8	12
12	3690344	Main Tube R.H.	1
13	3690345	Main Tube L.H.	1
14	3690346	Outer Main Tube R.H.	1
15	3690347	Outer Main Tube L.H.	1
16	3690348	Wheel Arm R.H. w/2 Hubs	2
17	3690349	Wheel Arm L.H. w/2 Hubs	2
18	3637502	Lever Plate	6
19	3637503	Pin	6
20	3638601	Pin	6
21	3638402	Snap Ring E15	12
22	3638400	Hairpin, Cotter M3	6
23	N/A	Capscrew M12 x 100	4
24	3690350	Wheel Arm R.H. w/Hub	1
25	3690351	Wheel Arm L.H. w/ Hub	1
26	3630101	Wheel Assy R.H.	5
27	3630102	Wheel Assy L.H.	5
28	3637505	Flange	10
29	3637508	Tine Clamp	100
31	70631C4	Carriage Bolt, M10 x 1.5 x 25	200
32	00765676	Nut, Toplock	200
33	3737507	Tine, Spring Dia 0.276" (7MM)	400
34	3630100	Hub Assy	10
35	3637509	Spindle, Weld-On	10
43	61368C8	Capscrew M10 x 25	60
44	00755954	Lockwasher M10 Spring	60
45	00755949	Nut M10	60
46	3696779	Plug, Tube	4

HYDRAULIC WIND ROW ADJUSTMENT KIT OPTION

MODEL XLRR1226

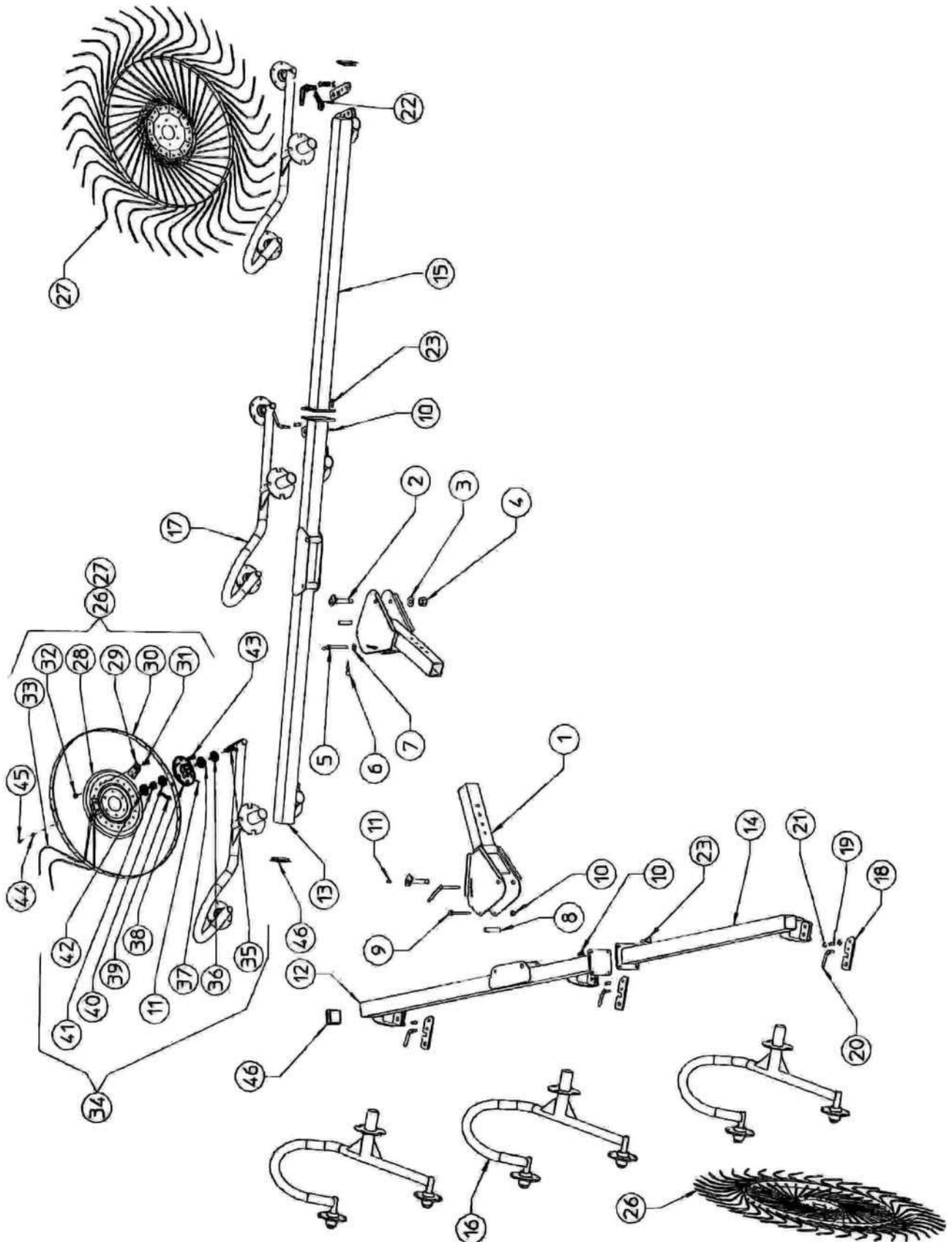


HYDRAULIC WIND ROW ADJUSTMENT KIT OPTION**MODEL XLRR1226**

REF. NO.	PART NO.	DESCRIPTION	QTY.
1	3690358	Cylinder Support	2
2	3698430	U-Bolt M12	4
3	3698431	Pin, Cylinder	4
4	3690359	Hose Support	4
5	3697122	Cylinder, Hydraulic	2
6	3678400	Copper Washer	16
7	3697123	Fitting 1/4", Adapter, Hydraulic	2
8	3697124	Adapter, Hydraulic Fitting	2
9	3697125	Fitting Male 1/4" Female M12	2
10	3697126	Nipple 1/4"-1/4" With Orifice 0.6	2
11	3677102	Bolt, Hydraulic	4
12	3697127	Lock Valve 1/4"	2
13	3697128	Hydraulic Adapter, 1/4"-1/4"	4
14	3697214	Hose 1/4" Length 1900MM-74.80"	1
15	3697215	Hose 1/4" Length 2150MM-84.65"	1
16	3697216	Hose 1/4" Length 2000MM-78.74"	1
17	3697217	Hose 1/4" Length 2050MM-80.71"	1
18	3697116	Fitting Male 1/4" Hydraulic Adapter Tee	2
19	3697205	Assy, Hose 1/4 x 200.79 (5100MM)	1
20	3697207	Assy, Hose 1/4 x 194.88 (4950MM)	1
21	3638408	Copper Washer 1/2" ID	2
22	3637102	Rapid Coupling 1/2"	2
23	3698428	Double Hose Collar M12	14
24	3678403	Hose Collar M14	4
25	N/A	Capscrew M6 x 60	4
26	02963652	Capscrew M6 x 35	4
27	N/A	Capscrew M6 x 60	3
28	3698429	Collar Clamp	4
29	00755934	Nut M8 Din 934	8
30	3698432	Capscrew M8 x 25 (Particular)	8
31	00772648	Nut M12 Din 980	8
32	703413W	Roll Pin M6 x 36	4
45	3697119	Seal Kit	2

WHEEL AND ARM ASSEMBLY

MODEL XLRR1226

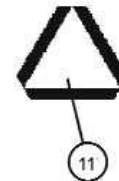
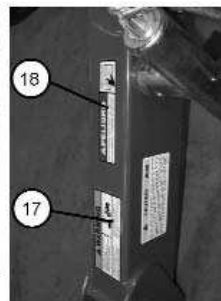
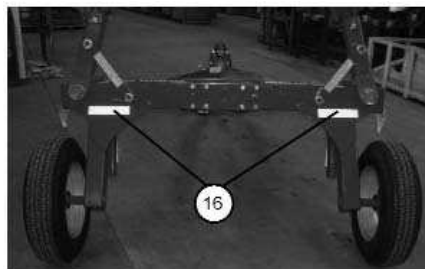
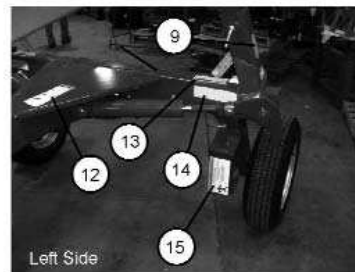
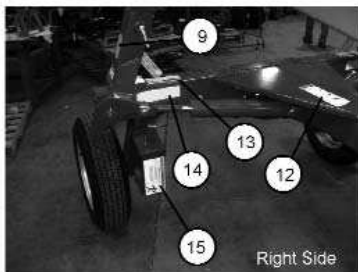
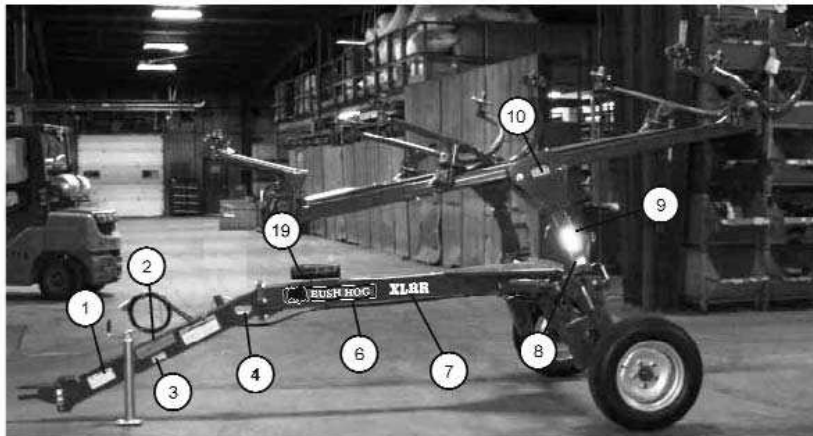


WHEEL AND ARM ASSEMBLY**MODEL XLRR1226**

REF. NO.	PART NO.	DESCRIPTION	QTY.
1	3690364	Outer Arm R.H. XLRR1226	1
	3690365	Outer Arm L.H. XLRR1226	1
2	3690342	Pin	2
3	N/A	Washer, Flat M21/37 x 3	2
4	70099C	Nut, Toplock M20 x 2.5	2
5	3690343	Pin	2
6	N/A	Split Pin BC4	2
7	701515C	Flatwasher M17	2
8	3697573	Bushing	2
9	N/A	Capscrew M12 x 120	2
10	00772648	Nut, Toplock M12	10
11	2568408	Grease, Fitting M8	14
12	3690360	Main Tube R.H.	1
13	3690361	Main Tube L.H.	1
14	N/A	Outer Main Tube R.H.	1
15	N/A	Outer Main Tube L.H.	1
16	3690348	Wheel Arm R.H., W/2 Hubs	3
17	3690349	Wheel Arm L.H., W/2 Hubs	3
18	3637502	Lever Plate	6
19	3637503	Pin	6
20	3638601	Pin	6
21	3638402	Snap Ring E15	12
22	3638400	Hairpin, Cotter M3	6
23	00754565	Capscrew, Socket Head M12 x 35	8
26	3630101	Wheel Assy R.H.	6
27	3630102	Wheel Assy L.H.	6
28	3637505	Flange	12
29	3637508	Tine Clamp	120
30	3637506	Rim	12
31	70631C4	Carriage Bolt, M10 x 1.5 x 25	240
32	N/A	Nut, Toplock M10	240
33	3737507	Tine, Spring Dia 0.276" (7MM)	480
34	3630100	Hub Assy	12
35	3637509	Weld-On Spindle	12
36	3736800	Seal	12
37	3736000	Bearing Set 30205	12
38	3637504	Wheel Hub	12
39	70477	Cotter Pin, M3.2 x 32	12
40	3736001	Bearing Set 30204	12
41	700728C	Self-Locking Nut M18 x 1.5 - 6	12
42	N/A	Safety Cap	12
43	61368C8	Capscrew M10 x 25	72
44	00755954	Lockwasher, M10 Spring	72
45	00755949	Nut M10	72
46	3696779	Plug, Tube	4

DECALS - BUSH HOG MARKING

MODELS XLRR1022, XLRR1226



REF. NO.	PART NO.	DESCRIPTION	QTY.
1	00786980	Decal, Genuine Bush Hog Parts	1
2	5W119	Decal, Warning - Speed Restriction	1
3	00763977	Decal, Important - Notice to Owner	1
4	999200	Decal, General Warning - All Unit	1
6	50065309	Decal, Bush Hog - 14.85"	2
7	50068831	Decal, Model XLRR	2
8	02962764	Decal, Pinch Points	2
9	2738333	Decal, Yellow Oblong Reflector	2
10	02962765	Decal, Multi-Hazard	2
11	03200347	Emblem, SMV	1
12	52740	Decal, Warning - Oil Leak	1
13	3668308	Decal, Warning - Transport	2
14	1458393	Decal, Yellow Reflector	2
15	2458315	Decal, Warning - Stored Energy	2
16	1458392	Decal, Red Reflector	2
17	999001	Decal, Warning - Tractor Weight	1
18	00725746	Decal, Peligro	1
19	00776031	Canister, Parts Manual	1



BUSH HOG[®]

2501 Griffin Avenue • Selma, AL 36703
(334) 874-2700
www.bushhog.com