

## DOT COMPLIANCE MANAGEMENT REFERENCE

# SAFESTAT

SafeStat, short for Safety Status Measurement System, is an automated data-driven system that calculates the safety fitness of motor carriers. Data is managed by the Federal Motor Carrier Safety Administration (FMCSA). Carriers should periodically review and verify the accuracy of SafeStat data.

### Update Your MCS150 Form Online

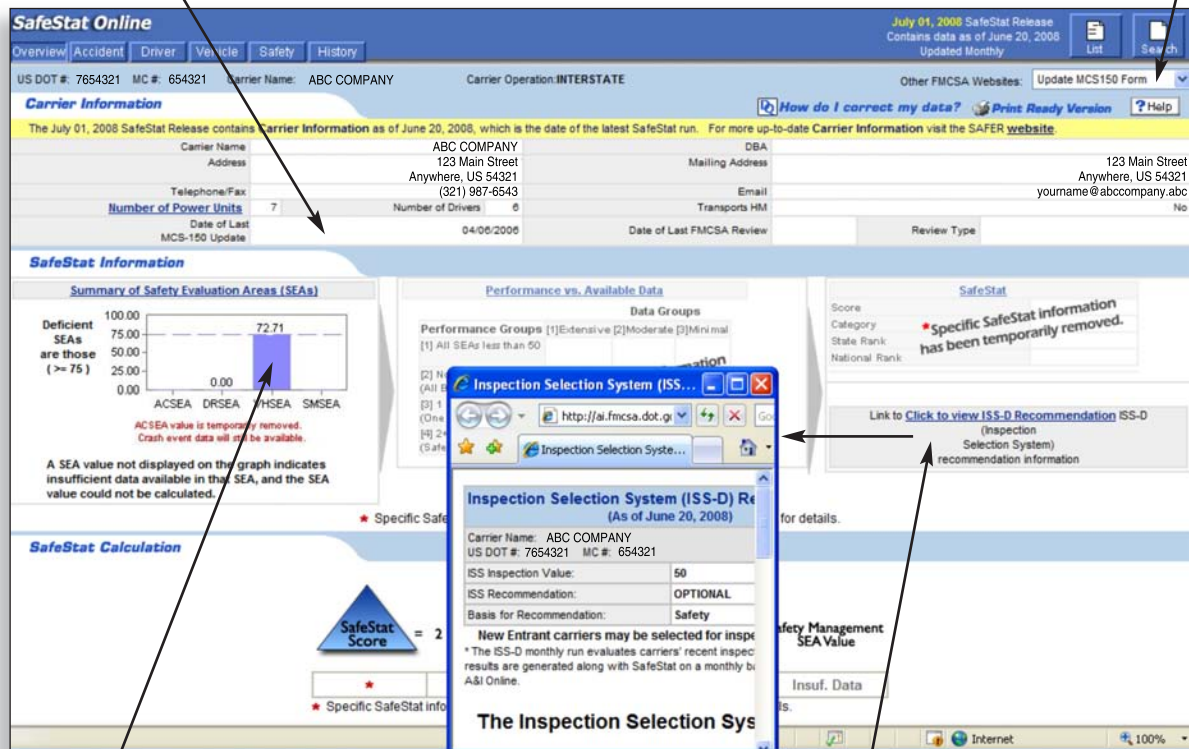
This form must be updated every 24 months based upon last two digits of the DOT #. The last number indicates the month, and the second to last number indicates whether you update in even or odd years.

1. Go to the Safestat Website:

**<http://ai.fmcsa.dot.gov/SafeStat/SafeStatMain.asp>**  
and enter your company name or DOT number.

2. Click on "Update MCS150 Form" in the top right pull-down box to do bi-annual update online.

3. Select tabs along the top to access detail data on Accident, Vehicle, Driver data.



- Safety Evaluation Area (SEA)
- Scores greater than 75% are considered deficient and may flag you for a DOT process review

- ISS-D recommendation indicates whether enforcement officers are likely to pull your vehicles in for full inspections.

Since 1953, J. J. Keller & Associates, Inc. has delivered regulatory and compliance solutions to companies like yours. Our Reference Sheets are just another example of us putting our knowledge and efficiency to work for you. See for yourself how our practical services can make an immediate positive impact on your organization.

1-800-558-5011, ext.8218  
[www.jjkeller.com](http://www.jjkeller.com)



J. J. Keller  
**BUSINESS SERVICES**  
Solutions to Manage Risk, Regulatory Compliance, and Operations



**J. J. Keller**  
& Associates, Inc.<sup>®</sup>  
Since 1953