



WATTS CURRENT

Raccoon Valley Electric Cooperative

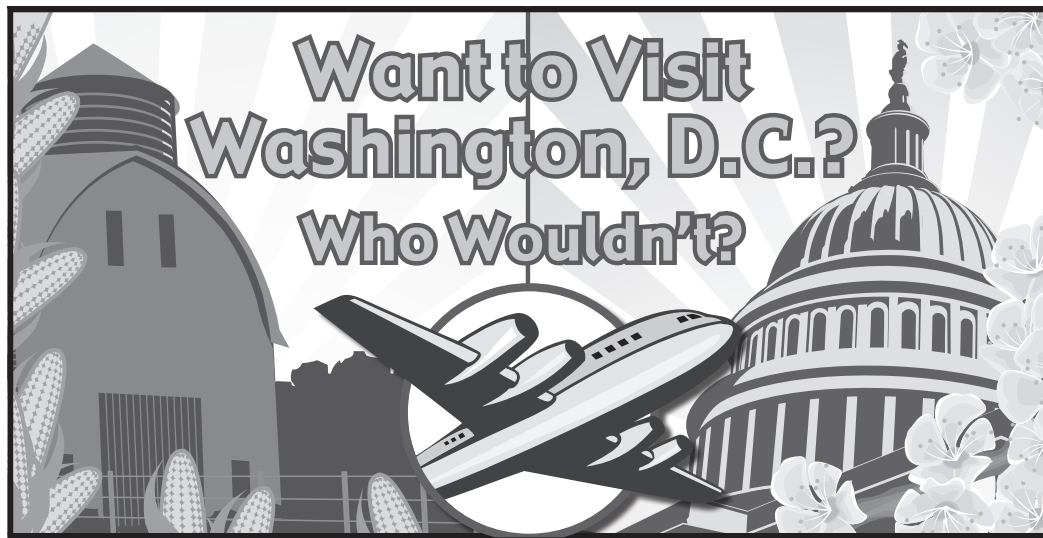


November 2011

Win a trip to Washington, D.C.

An all expense paid trip to Washington, D.C. June 15-21, 2012 along with a \$500 scholarship will be awarded to one young person from this area.

Contest applicants must currently be a high school junior residing in the RVEC service area, either town or country. However, the parents do not have to be Raccoon Valley Electric Cooperative members.



Based on the highest test score of an open book and essay exam, RVEC will award one contest winner a five day all expense paid trip to the nation's capitol. The winner will also receive a \$500 scholarship to use during their first year of college or secondary school. Study material and the exam will be mailed after the application deadline of February 15th. 10-S-1-P

Further information and applications may be obtained by contacting RVEC at 712.659.3649 or <http://youthtour.iowarec.org/> or <http://youthtour.coop/>.

YOUTH TOUR CONTEST APPLICATION

Student _____

Address _____ Telephone # _____

School _____

(Must currently be a high school junior to enter)

We certify that we are the parents or legal guardians of the above youth and give our permission for the youth to participate in the trip to Washington, D.C. should he or she be declared the winner; and further agrees that his or her entry will become the property of the Raccoon Valley Electric Cooperative.

Date _____ Signature of Parent or Legal Guardian _____

Mail to: Youth Tour Contest, RVEC, PO Box 486 Glidden, IA. 51443



— CEO Comments —

As we enter the New Year, our power provider has informed us of pending rate increases. At the end of November we mailed each member a letter discussing these rate increases. These increases are largely due to the addition of new electrical generation plants. The cost of new generation has increased by about 300% in the past few years, mainly due to stricter environmental regulations and increased commodity costs. RVEC will also need a slight increase to cover non-FEMA reimbursed recovery costs sustained during the ice storms and tornadoes of 2009 through 2011. We sincerely apologize for any inconvenience this may cause and we will continue to look for ways to mitigate costs and reduce future rate increases. Please do not hesitate to contact us with any questions.

We will remember 2011 as a very busy year here at RVEC. We currently have 3 contract crews and our own line crews working to complete 500 miles of new electrical distribution line. These lines, which were damaged in the 2009 and 2010 ice storms, represent about 2/3 of the total rebuild needed. I am proud to say that our crews have completed this work in a safe manner, with no lost time accidents! We will continue the rebuild in 2012 and hopefully complete the project early in 2013.

We wish each of you a Merry Christmas and a prosperous 2012. 12.34.02

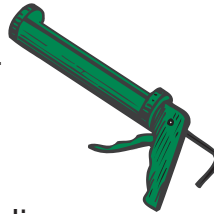
New Year's Resolution: Seal Leaks

Every hole in every wall of your house has the potential to rob it of comfortable, heated air and let the outdoor weather come inside.

That's a waste of the energy it takes to keep your home warm.

Take a walk around every room in your house. Notice your electrical outlets, Internet and TV cables and phone lines where they come into the house from the outside. Is there any space around the hole where the line or switch plate or cable fit?

If they're not snug, caulk around them until they are. That will help prevent air from leaking inside and out. 3-S-19-I



*All of us at
Raccoon Valley Electric Cooperative
(RVEC)
wish you and your family
a joyful holiday season!!*

RVEC will be

CLOSED

on **December 26th** for the Christmas holiday
&
on **January 2nd** for the New Year's holiday

Complaint Procedure

The Iowa Utility Board requires that all non-rate regulated utilities post the following notice to its membership: 11.24.03

If a member-consumer has a problem with his/her service, please write or call:

Raccoon Valley Electric
Cooperative
P.O. Box 486
Glidden, Iowa 51443
712.659.3649

If the member-consumer's complaint is related to Raccoon Valley Electric Cooperative's (RVEC) service rather than its rates, and RVEC does not resolve your complaint, you may request assistance from the:

Iowa Utilities Board
1375 E. Court Avenue
Room 69
Des Moines, Iowa 50319
877.565.4450

Give Space Heaters Their Space

Space heaters can work wonders on the coldest winter days to warm rooms your central heating system can't quite reach. But while manufacturers have worked to build more safety features into this alternative heating source, users still should take precautions to ensure these cozy heaters don't become fire hazards.

Space heaters are designed as a supplemental source of heat, not as the main source. So you shouldn't use them constantly, especially in rooms that you don't use much. Check your space heaters for an Underwriters Laboratories (UL) seal and follow these guidelines for safely using it:

- Keep space heaters at least three feet away from drapes and furniture that could catch fire.
- Don't use extension cords with space heaters unless absolutely necessary. 16-S-9-C
- Inspect the heater's cord periodically for frayed wire or damaged insulation. Don't use a space heater with a damaged cord.
- Check periodically for a secure plug/outlet fit. If the plug gets hot, the outlet may need to be replaced by a qualified electrician. This could be the sign of a home wiring issue.
- Place your heater on a flat, level surface. Don't place heaters on furniture, as they may fall and break or even start a fire.
- Unless the heater is designed for use outdoors or in bathrooms, don't use it in wet areas.

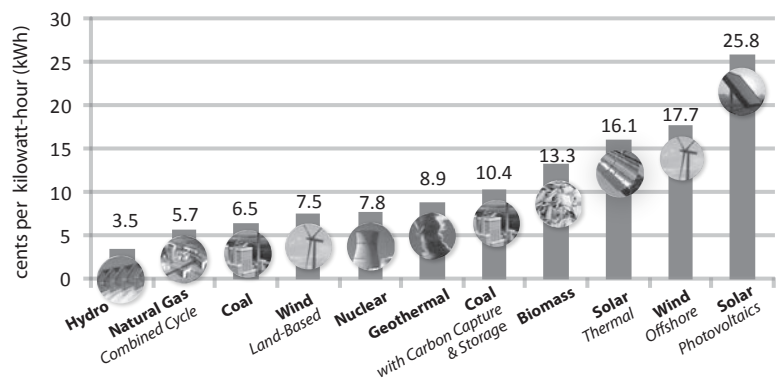


Touchstone Energy®

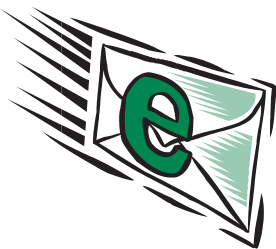
The power of human connections

The Cost of New Generation

The cost to build new power plants can vary widely. Each type of generation carries a ballpark price tag. The costs shown below, based on each kilowatt-hour produced, take into account plant construction, fuel, operating and maintenance costs, operating performance assumptions, expected operating life, and general tax and financing assumptions. Wind and solar generation are not directly comparable to other technologies because their power production varies based on weather conditions.



Estimates by National Rural Electric Cooperative Association using U.S. Energy Information Administration data from April 2011



Sign up to receive Smart Choices, our monthly e-newsletter

Raccoon Valley Electric Cooperative (RVEC) offers Smart Choices as a way to keep in touch with members with energy efficiency news and important local information. Smart Choices readers also find out about drawings for prizes, special promotions and more. Sign up today by completing the form below.

Name _____

Address _____ City _____ St _____ Zip _____

E-mail Address _____

WATTS CURRENT

Published monthly by
Raccoon Valley Electric Cooperative

-- Directors --

LaVerne Greving, Pres.Carroll
Jeff CranstonOdebolt
Mark LudwigBreda
David Onken..... Glidden
Brad Polzien..... Wall Lake
Tim Reeve Glidden
Steve Seidl Coon Rapids
Karen WernerSchaller

-CEO-

James E. Bagley

-Office Hours-

Monday - Friday
7:00 a.m. to 4:30 p.m.

-Office Address-

Headquarters
PO Box 486, 28725 Hwy 30
Glidden, IA. 51443
Phone: 712.659.3649
Fax: 712.659.3716

Satellite

PO Box 397, 601 E. Main St.
Sac City, IA. 50583
Phone: 712.662.4275
Fax: 712.662.4538

www.rvec.coop

e-mail: info@rvec.coop

For outages and emergencies --

Former Glidden REC members
call: 712.659.3649

Former Sac County REC members
call: 712.662.4275



Follow us on facebook



Touchstone Energy®

The power of human connections

Basin Scholarship

Dependents of Raccoon Valley Electric Cooperative (RVEC) members are eligible to apply for a \$1,000 scholarship to be provided by Basin Electric Power Cooperative and Corn Belt Power Cooperative, power suppliers of RVEC.

The scholarship program is designed to encourage and recognize the achievements of a student living on electric cooperative lines. The scholarship must be used for educational costs and the student must enter college in the fall of the school year for which the scholarship is given. The applicant must be a student who is enrolled or planning to enroll in a full-time graduate or undergraduate course of study at an accredited, two-year or four-year college, university or vocational/technical school.

This scholarship is awarded without regard to other awards, loans or financial assistance the applicant may have obtained. Award of the scholarship is based on the following criteria: SAT/ACT scores, grade-point average, work experience, participation in school and community activities, a statement by the student explaining his/her educational and career goals and a written recommendation by a third party. 28.27.04

Applicants may get an application form from RVEC. Application forms are due January 31, 2012. For more information, contact Jill Hannasch at 712.659.3649 or 800.253.6211 or e-mail jillh@rvec.coop.

Property Taxes Paid

Property taxes are used to help fund such important things as education and city and county government. You might not be aware of it, but your Cooperative pays property taxes. Raccoon Valley Electric Cooperative (RVEC) receives a tax bill for the poles, wires, transformers, etc. out on the line and another tax bill for the office and warehouse. RVEC pays taxes in nine different counties that we serve.

The following is a breakdown of the property taxes paid in 2011.

County	Taxes Paid
Audubon County	\$3,153
Buena Vista County	\$133
Calhoun County	\$617
Carroll County	\$40,905
Crawford County	\$50
Greene County	\$2,678
Guthrie County	\$325
Ida County	\$72
Sac County	\$17,373

Spot Your Number

Read Watts Current and watch for your location number. If you spot it, call RVEC by the 20th of the month and you will receive an electrical bill credit for \$10.00.