

The Kandiyohi

Kilowatt



Touchstone Energy® Cooperatives
The power of human connections®

February 2015
Volume 71 - Issue 2

Official Publication of Kandiyohi Power Cooperative
www.kpcoop.com



Rate Study Completed

For over a decade, your CEO and Board of Directors have taken the position that one customer should not subsidize another customer, and that the rates should be as fair and equitable as possible across the membership. To ensure that KPC is maintaining this philosophy, periodically we work with the Prime Group LLC out of Louisville, Kentucky to conduct an in-depth study of our rates along with Great River Energy's rate forecast to help determine the most fair and equitable rates along with meeting our current and future needs. In mid-December they completed this study and determined that some of our rates needed to change. Effective January 1, 2015 those rates affected were implemented. While it is never easy to share this news, it is important that we are able to sustain financial stability so that we continue to serve our customers with reliable energy, products and services.

Why You Should Attend Our Annual Meeting...

It's that time of year again – annual meeting time! On behalf of Kandiyohi Power Cooperative, we'd like to personally invite you to join us on April 14, 2015 at the Spicer American Legion. We look forward to gathering with you – members of the co-op community – to catch up, hear what you have to say and enjoy some good food and fellowship.

This event is not only a chance to visit with members of our co-op community – it's also a great opportunity to learn about programs offered by Kandiyohi Power Cooperative and get to know your co-op staff. Our annual meeting makes it possible for us to gather feedback from you by providing a forum where you can let us know how we can better serve you and your family.

This is an occasion to discuss and learn more about the issues affecting our local communities. It's also an opportunity for you to exercise one of the greatest benefits of being a member of an electric co-op, by voting for the upcoming year's board of directors.

Kandiyohi Power Cooperative is not owned by far away investors, and it is not run by an appointed board of directors. We are run by a democratically elected board of directors – a

board who is given the privilege to serve because of your vote.

Our directors are members of your community. They are concerned with the issues you face every day because they face them too. And don't forget – all members of Kandiyohi Power Cooperative are eligible to run for the board – that includes you!

A democratic and open election is one of the many elements that make our electric cooperative stand out from other utilities. Having a voice in who makes the major decisions that directly affect your life and your family is a right we all share as Americans. We all vote for our state and federal Congressional representatives, but not every American has the right to vote for those who will represent community interests within their electric utility. You have that right, so why not exercise it?

Rest assured, no matter what happens, we remain dedicated to providing you with safe, reliable and affordable electric service, but we encourage you to take part in helping us improve how we deliver that service. So make it a point to join us on April 14 at our annual meeting. We look forward to seeing you there.



Heartland Security's Vern Zimmer, was awarded "Salesman of the Year." Vern achieved this by having the highest number of monitored accounts and the highest sales (dollar) volume in 2014. Congratulations Vern!



Operation Round Up

OPERATION ROUNDUP DONATIONS FOR FIRST QUARTER OF 2015...

Blue Star Mothers	\$1000.00	CMCS Post Prom	\$ 200.00
Special Olympics (Polar Plunge)	\$1000.00	KMS Post Prom	\$ 200.00
Praise and Play Preschool (NL/S)	\$1000.00	MACCRAY Post Prom	\$ 200.00
Prairie Woods Environmental Center ..	\$2000.00	NL/S Post Prom	\$ 200.00
Atwater Ambulance	\$1000.00	RCW Post Prom	\$ 200.00
Lullaby Quilters	\$ 500.00	Willmar Post Prom	\$ 200.00
NL/S Educational Foundation	\$ 500.00	Atwater First Responders	\$1000.00
Norway Lake Historical Society	\$ 800.00	Blomkest First Responders	\$1000.00
Kandiyohi County Humane Society	\$1000.00	Kandiyohi First Responders	\$1000.00
ACGC Post Prom	\$ 200.00	BBE Area Food Shelf	\$ 750.00
BBE Post Prom	\$ 200.00	<u>Willmar Area Food Shelf</u>	<u>\$ 750.00</u>
BOLD Post Prom	\$ 200.00		
			\$15,100.00

Are you interested in receiving energy produced by the sun but don't want the expense of material,

maintenance, and other costs involved to install solar at your residence? KPC has made it possible for you to take advantage of "Nature's Resource" and benefit from the output of solar panels on your electric account for a one-time \$1250 fee per panel. Call KPC at 320-796-1155 today for more information to see how you can begin to use "Nature's Resource for a Brighter Tomorrow."



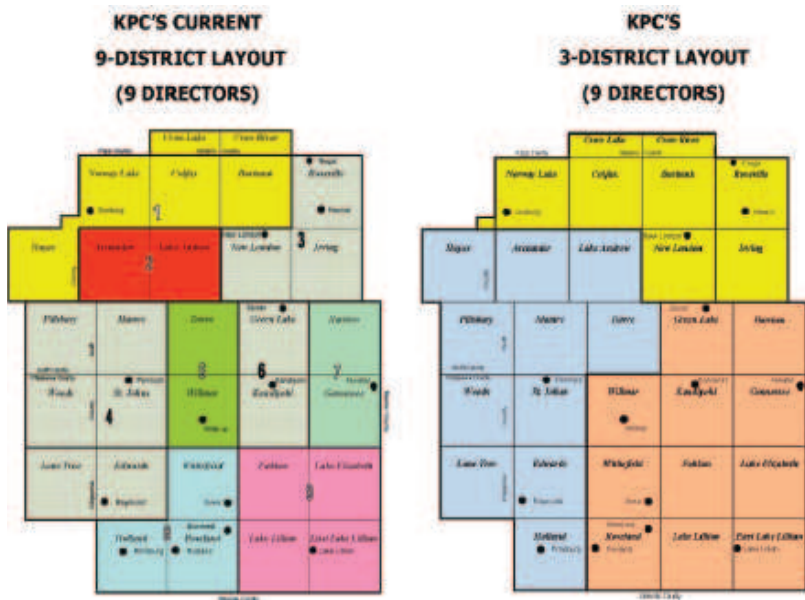
Director Filings Now Open...

If you currently live in **District 3** – you will be running for **District 1**
 If you currently live in **District 4** – you will be running for **District 2**
 If you currently live in **District 6** – you will be running for **District 3**

Would you like to serve as a Director on the Kandiyohi Power Cooperative Board for your District? Please call or stop by and request a Director packet. These packets contain the cooperative's bylaws as well as the qualifications to become a Director. As a Board Director you will serve a 3 year term and must reside within the district you are filing in. Filings are due to the office by 4:00 p.m. on Monday, February 23, 2015.

of members to be held in the year 2015 and ending on the date of the annual meeting of members to be held in the year 2017, shall be used to effect the transition of the present board of directors to a reformed board of directors consisting of three directors elected from each of three newly formed districts which will replace the current districts. Each respective newly formed district shall be comprised of the area within the following townships:

- District 1** - Norway Lake, Colfax, Burbank, Roseville, New London and Irving Townships (Kandiyohi County).
- District 2** - Hayes and Pillsbury Townships (Swift County); Woods and Lone Tree Townships, (Chippewa County); Arctander, Lake Andrew, Mamre, Dover, St. Johns, Edwards and Holland Townships (Kandiyohi County).
- District 3** - Green Lake, Harrison, Willmar, Kandiyohi, Genessee, Whitefield, Fahlun, Lake Elizabeth, Roseland, Lake Lillian and East Lake Lillian Townships (Kandiyohi County).



Board Re-Districting Transition Begins With 2015 Annual Meeting...

To balance out the Districts within the Cooperative Territory, Article V was approved and includes the following information. A transition period, commencing on the date of the annual meeting

During the transition period the following provisions governing election of directors and district representation shall apply:

- Each incumbent director whose term does not expire in the year 2015 shall continue to serve as a representative of the current district from which he or she was elected until the expiration of his or her current term.
- At the annual meeting of members to be held in the year 2015 an election shall be held to elect one director from each of the newly formed districts, each for an initial term of three years. Current districts No. 3, 4 and 6 shall cease to exist.
- At the annual meeting of members to be held in the year 2016, an election shall be held to elect one director from each of the newly formed districts, each for an initial term of three years. Current districts No. 1, 7 and 8 shall cease to exist.
- At the annual meeting of members to be held in the year 2017, an election shall be held to elect one director from each of the newly formed districts each for an initial term of three years. Current districts No. 2, 5, and 9 shall cease to exist.

Kandiyohi Power Cooperative

8605 47th Street NE
Spicer, MN 56288-0040
320-796-1155 • 800-551-4951
Fax: 320-796-0620
www.kpcoop.com

Kandiyohi Power Cooperative Board of Directors

District #1	Dale Anderson
	320-254-3530
District #2	Ted Olsen
	320-220-3084
District #3	Diane Helgeson
	320-220-3745
District #4	Donna Boonstra
	320-231-1398
District #5	Dan Pomranke
	320-894-7113
District #6	Darrell Fostervold
	320-212-4824
District #7	Robert King
	320-974-8681
District #8	Stanley Wubben
	320-905-8325
District #9	Jerrell (Stan) Stanley
	320-444-4384

Office Hours

Mon. - Fri. 7:30 am-4:00 pm

Kandiyohi Power Propane

Mon. - Fri. 7:30 am-4:00 pm
320-796-1156

Drop boxes available for your convenience at
Cash Wise and the Headquarters (near flag pole)

Kandiyohi Power Cooperative Mission Statement

To serve the community with
energy, products and services



Find us on:
facebook.

KILOWATT CLASSIFIEDS

FOR SALE

Two Maytag wringer washers, both square tubs, \$75 ea. o/b/o. 320-877-7468.

6.5x14 fishhouse w/2 bunks, propane furnace, 12 volt lighting, 6 holes, \$5500. 320-905-0730.

Home on 5.3 acres near Sibley State Park, \$240,000. 320-260-3135.

Learn fiberglass topper fits 89-97 Chevy shortbox, \$150. 320-894-6936.

1997 Ford F150 4x4, 263K, \$2000 o/b/o. 320-894-5076.

2-volume book set "The Modern Gunsmith" by Howe 1941. 320-235-4105.

Credit #100604001.

Copperclad wood stove, very old, nice shape, make offer. 320-226-1999.

100+ 78 RPM records, best offer. 320-974-8280.

Stamina exercise bicycle, like new, \$200. 320-444-2429.

Wood stove and LP High Efficient furnace. 320-220-3564.

60hp Mercury/fiberglass boat/trailer, \$1500; Two Poulan chainsaws; Firewood. 320-760-4066.

(SCMW) highend hardened steel pistol and rifle targets .223/.308. 320-220-3888.

Duracell battery 580CCA, 3 months old, new \$80, \$50. 320-354-5459.

In Focus projector bulb Model Xi, \$30. 320-796-5059.

4x5 round net wrapped hay and bedding; Overhead tank stand. 320-905-6195.

Willow Tree angels; Console TV. 320-995-6258.

Round bales; 30 gal oil drum; Gas tank stank. 320-382-6288.

Credit #220704001.

Generator, 110 volt 230 volt, electric start, 350 watts, \$450. 320-212-7154.

Hockey skates, large; George Foreman grill; Electric darts, new, \$10 ea. 320-354-4432.

FOR RENT

Green Lake cabin \$700/weekly, no pets. 320-796-2729.

WANTED

Old Stevens single shot rifles or parts, any condition. 320-354-2793.

Old tackle, decoys, wildlife art, duck stamps, deer antlers. 320-796-6993.

Early Minnesota license plates 1909 and 1910. 612-384-4131.

Downhill skis, poles, boots, size 6 or 7. 320-235-8680.

German Shepherd dog, 1-2 years old, no crossbreeds. 320-877-7468.

Pontoon trailer; Lift for like new Chevy pickup. 507-723-4478.

Credit #992891001.

38" rim for TW-25 Ford tractor, must have dual hub. 320-235-4890.

Super 8mm projector. 320-382-6280 after 5pm.

Land for trapping coyotes and predators. 320-905-1504.

GIVE AWAY

Paddleboat. 320-221-1206.



Strawberry Pie

Prep: 20 min. + chilling
MAKES: 8 servings

Ingredients

1 cup (6 oz.) semisweet chocolate chips, divided
3 teaspoons shortening, divided
1 - 10 in. graham cracker crust
1 - 8 oz. cream cheese, softened
1/2 cup sugar
1/2 cup sour cream
1 teaspoon vanilla extract
1 - 8 oz. whipped topping, thawed
2 cups fresh strawberries, halved
1/2 cup seedless strawberry jam

Directions

In a microwave, melt 3/4 cup chocolate chips and 2 teaspoons shortening; stir until smooth. Brush over crust. Refrigerate until firm. In a small bowl, beat the cream cheese, sugar, sour cream and vanilla until smooth. Fold in whipped topping. Spoon into crust. Refrigerate for 1 hour. Arrange strawberries over pie. In a microwave, heat jam until melted; brush over the top. Melt remaining chocolate chips and shortening; stir until smooth. Drizzle over pie. Refrigerate until chilled.

Kilowatt Credit Scorecard

Win a credit on your next bill!

PLEASE NOTE: Account numbers are used. They are up to 9 digits, as appearing on your **monthly bill**. If you find your account number in this KILOWATT, please notify us by the 4th to claim your credit. We then will credit your bill. Do not deduct that amount from your bill; pay as usual. Nobody found their numbers in the January Kilowatt. **Each Account Number is Worth: \$5.00.**

Kilowatt Classified Ad

Name: _____	1. _____
Address: _____	2. _____
Phone: _____	3. _____
Please check ad category:	4. _____
<input type="checkbox"/> Giveaway	5. _____
<input type="checkbox"/> For Sale	6. _____
<input type="checkbox"/> For Rent	7. _____
<input type="checkbox"/> Wanted	8. _____
Only one ad (9 words) per customer. NO PHONE CALLS PLEASE. Classified Ads may be viewed and placed on our website at www.kpcoop.com.	9. _____
Clip and send to: Kandiyohi Power Cooperative 8605 47th Street NE • Spicer, MN 56288-0040	

2015 Residential Energy Management Program Rebates

Credit #443255001

Storage Water Heating

- Conversion from existing electric to off-peak water heating (85 or 105 gal.).....\$300
- New construction on off-peak (85 or 105 gal.)\$300

Ductless Air Source Heat Pump\$300

Energy Star A/C

- Must be installed by a Certified Quality Installation Contractor
- 14.5 SEER & Higher\$50

Air Source Heat Pump

- Must be installed by a Certified Quality Installation Contractor
- 13 SEER\$330
- 14.5 SEER\$480
- 15 SEER\$580
- 16 SEER\$630

Ground Source Heat Pump

- Controlled or Uncontrolled\$400/Ton

Electronically Commutated Motor (ECM)

- Furnace motor, new or replacement100

Other

- Dehumidifiers\$25
- Refrigerators & Freezers – Does not include new construction and must have proof of disposal of old one\$75
- A/C Tune-up.....\$25

Marathon Electric Water Heaters now available at KPC

Kandiyohi Power now has Marathon Electric Water Heaters in stock!!!

- 105 Gallon
- Most durable water heater made with warranty
- Complete with a factory installed vacuum relief valve, 3/4" brass tee and 3/4" brass nipple for easy professional installations
- Replaceable brass drain valve
- All wiring run in conduit for easy control wiring
- Seamless blow molded polybutene tank with no anode rod required for a corrosion free life
- High temperature, commercial-grade dip tubes for greater durability, which are offset from the concave bottom, creating a "whirlpool effect" which helps prevent sediment build-up
- Every tank includes 4' of pipe insulation for even greater savings



Make Your Garage or Shop Comfortable With A

HOT DAWG HEATER

Order Yours Today!
320-796-1156



Heartland Security protects your home and family

Heartland Security provides alarm systems for homes and businesses as well as medical alert systems. We also offer interactive services available through your smartphone that allow you to arm or disarm your system, control your lights and thermostat, or view live video.

Heartland Security is a two-time winner of the Security Pro Dealer of the Year award and protects more than 7,000 customers in western and southern Minnesota and northern Iowa.

Call us today for a **free**, no obligation security analysis and quote!

1-888-264-6380

HEARTLANDSS.COM

Credit #865722001

WE FILL CYLINDERS!



Heating Season is Here!

All will-call customers remember to watch your tanks and give a three day notice.

Even if you are on a scheduled delivery basis, we appreciate your help in keeping an eye on the gas level in your propane tank!

When your tank reaches 25% please call Shelli at 1-800-551-4951 or 320-796-1156