

# SIZE CHART

# 2013 2014

## MENS

	CONTACT PRO/CONTACT S/M	S/M	M/L	L/XL
MONDO	230 – 260	230 – 265	260 – 290	285 – 320
UK	4 – 7	4 – 7.5	7 – 10	9.5 – 13
US WOMEN	5.5 – 8.5	5.5 – 9	8.5 – 11	11 +
US UNISEX	5 – 8.5	5 – 8.5	8 – 11	10.5 – 14
EURO	37 – 40.5	37 – 41	40.5 – 44	43.5 – 48

## WOMENS

	S	M		
MONDO	210 – 235	230 – 265		
UK	1.5 – 4.5	4 – 7.5		
US WOMEN	3 – 6	5.5 – 9		
US UNISEX	2.5 – 5.5	5.5 – 8.5		
EURO	34 – 37.5	37 – 41		

## YOUTH

	Y			
MONDO	210 – 235			
UK	1.5 – 4.5			
US WOMEN	3 – 6			
US MEN	2.5 – 5.5			
EURO	34 – 37.5			



**UNION BINDING COMPANY**

Year Nine  
Dealer Catalog  
unionbindingcompany.com

**STRONGER.**

### NORTH AMERICA

#### C3 WORLDWIDE

2700 W Commodore Way  
Building A1, Suite 301  
Seattle, WA 98199  
United States

PH 206-632-1601  
FX 206-932-0543

sales@c3-worldwide.com  
c3-worldwide.com

### CHINA

#### BEIJING GDRSPORT TRADING LTD

5-10, BaiZhiFang  
XuanWu  
Beijing  
China

PH 86-10-63549883  
FX 86-10-63549883

writetoyan@gmail.com

### KOREA

#### GMP SPORTS

605-10 Segye Bld 1F.  
Yeoksam-Dong  
Gangnam-Gu  
Seoul, Korea

PH 82-2-557-6580  
FX 82-70-8610-6581

info@gmpcompany.co.kr  
gmpcompany.co.kr

For all other European countries  
visit unionbindingcompany.com.  
©2013 All Rights Reserved/Core SRL

# 2013 2014



**UNION BINDING COMPANY**

Year Nine  
Dealer Catalog  
unionbindingcompany.com

**STRONGER.**

### NORTH AMERICA

#### C3 WORLDWIDE

2700 W Commodore Way  
Building A1, Suite 301  
Seattle, WA 98199  
United States

PH 206-632-1601  
FX 206-932-0543

sales@c3-worldwide.com  
c3-worldwide.com

### CHINA

#### BEIJING GDRSPORT TRADING LTD

5-10, BaiZhiFang  
XuanWu  
Beijing  
China

PH 86-10-63549883  
FX 86-10-63549883

writetoyan@gmail.com

### KOREA

#### GMP SPORTS

605-10 Segye Bld 1F.  
Yeoksam-Dong  
Gangnam-Gu  
Seoul, Korea

PH 82-2-557-6580  
FX 82-70-8610-6581

info@gmpcompany.co.kr  
gmpcompany.co.kr

For all other European countries  
visit unionbindingcompany.com.  
©2013 All Rights Reserved/Core SRL

### EUROPE

#### A4 DISTRIBUTION SRL

Via Madriasco 5  
Localita' Tavani  
23014 Delebio (so)  
Italy

PH 39-0342-683-494  
FX 39-0342-696-496

info@a4distribution.it  
a4distribution.it

### AUSTRALIA / NZ

#### PRINCIPLE DISTRIBUTION

14 Baines Crescent  
Torquay, Victoria  
3228, Australia

PH 61-3-5261-6400  
FX 61-3-5261-6444

info@principledistribution.com.au  
principledistribution.com.au

### CANADA

#### NO LIMITS SPORTSWEAR

PH 604-431-7330  
FX 604-431-7758

customercare@nolimits.ca  
nolimits.ca

For all other European countries  
visit unionbindingcompany.com.  
©2013 All Rights Reserved/Core SRL

### JAPAN

#### CUSTOM PRODUCE INC.

YS Bld. 2F, 1-10-2 abiko  
Abiko City  
Chiba, 270-1166  
Japan

PH 81-4-7183-2380  
FX 81-4-7183-2467

home@cpi-jp.com  
customproduce.com

### CHILE

#### CHILL & PROJECT

Av Los Conquistadores 1913  
Providencia, Santiago  
7520270, Chile

PH 54-56-9-9876-3083

ventas@chillandproyect.com  
chilland.net

### ARGENTINA

#### 26 SPORT SRL

Bonpland 1629 4B  
Caba 1414, Argentina

PH 54-9-294-439-9013

facundo@snowboardpatagonia.com  
snowboardpatagonia.com

For all other European countries  
visit unionbindingcompany.com.  
©2013 All Rights Reserved/Core SRL

UNION BINDING COMPANY 2013/2014 STRONGER YEAR NINE / DEALER CATALOG UNIONBINDINGCOMPANY.COM 13



# STRONGER.

2013  
2014



RIDER: DAN BRISSE  
PHOTO: AARON DODDS

UNION BINDING  
COMPANY

UNION BINDING  
COMPANY

YEAR NINE / DEALER CATALOG  
UNIONBINDINGCOMPANY.COM

2013-2014  
STRONGER

PAGE  
01



# 2013 2014

## YEAR NINE.

**THE PERFECT BINDING IS MORE THAN A MECHANISM. IT'S MORE THAN A TOOL. IT'S MORE THAN THE SUM OF BASEPLATE, HIGHBACK, STRAPS AND HARDWARE. THE PERFECT BINDING IS A CATALYST TO CREATING THE ULTIMATE CONNECTION BETWEEN RIDER AND BOARD—AND THAT CONNECTION SPELLS FREEDOM.**

The Union Binding Company is an independent brand whose goal is to produce the best bindings on the planet. It's the goal the company was founded on and it's the one we remain committed to. We build bindings for snowboarders who thrash their gear and expect it to survive. That's why product comes first.

In our first year, we created an elite and unique binding that was totally bombproof. With a zero warranty-return rate, we knew we'd discovered the foundation for our future. Constantly looking for ways to progress, we spent the next two years developing innovative processes, such as Injected Magnesium and Machined Coring to increase strength and reduce weight. We also introduced the use of new materials, working exclusively with the highest quality DuPont™ Zytel® ST.


Moving into year nine, Union has taken another huge step forward. We're reinvesting in research and design—challenging ourselves to raise the bar once more and make the best bindings that ever hit the snow. Our line has grown, our team has grown, and our presence has grown—but our goal remains the same: to supply the best-fitting, highest performing and most durable bindings in the business.

CONTENTS	MEN'S COLLECTION	WOMEN'S COLLECTION	CUSTOM HOUSE/TEAM
Welcome.....	03	Metafuse™ MC.....	14
Quality & Durability .....	04	Charger .....	18
Trueflex .....	06	Factory .....	22
Weight.....	08	Atlas .....	26
Union Truefit™.....	10	Contact Pro .....	30
Industry Firsts.....	12	Force .....	34
		Contact .....	38
		Flite Pro.....	42
		Flite.....	46
		DLX.....	48
		Mini Flite .....	52
		Legacy.....	54
		Trilogy.....	58
		Milan.....	62
		Rosa.....	66
		Flite Lady .....	68
		Union Custom House...	70
		Softgoods .....	72
		Supporting Riders.....	74
		Line Overview.....	76

# TECH QUALITY & DURABILITY



Every pair of our bindings is injected with the highest-quality DuPont™ Zytel® ST Nylon. The result is strength, safety, and security. It also means having the confidence of a lifetime warranty on all baseplates and heelcups. So, if you break, or even crack your baseplate or heelcup during riding, we'll replace it for life. Guaranteed.

- ENDORSED BY TRAVIS RICE 
- TEAM HIGHBACKS
- SONICFUSED ANKLE STRAP\*
- ALL NEW—OPEN TOES STRAPS
- ALL NEW—CANTED 2.5 DEGREE GAS PEDALS
- RAW NYLON INJECTION—NO PIGMENT
- LIFETIME WARRANTY BASE
- EXTRUDED 3D ALUMINUM HEELCUPS
- 1ST QUALITY EVA

**\*SONICFUSED STRAPS**  
SonicFuse is a multi-layer composite, fused together to form a single articulated strap component. A new approach to minimize stitching and increase durability.



FEATURED BINDING: The Factory

# TECH TRUEFLEX



Union has been pioneering the concept of minimizing “dead zones” under the snowboard binding since our first prototypes started taking shape back in 2003. This idea of promoting “true board flex” has progressively evolved with each new Union chassis. The all new Contact Pro takes our philosophy to another level. With two solid years of R&D with Gigi Rűf, we have built a platform that will set the standard for the future of Union.

DESIGNED BY GIGI RŪF

ALL NEW—CONTACT PRO HIGHBACKS

ALL NEW—OPEN TOE STRAPS

MAGNESIUM BUCKLES

LIFETIME WARRANTY BASE

ALL NEW—CONTACT PRO BASE

ALL NEW—MINIDISK MOUNTING SYSTEM

EXTRUDED 3D ALUMINUM HEELCUPS

ALL NEW—MULTIZONE FULL BOTTOM  
BUSHING SYSTEM



# TECH WEIGHT



# STRONGER.



Are you of the mindset that “less is more?” Our super lightweight female specific bindings will keep your feet free from fatigue, and have you ripping the slopes like Jessica Kimura—all day long. From top to bottom, the Union Lady collection is hands down above the rest.



# TECH UNION TRUEFIT



01

## FIBERGLASS INDEX

LARGE / X-LARGE  
FIBERGLASS CONTENT:

14%



MEDIUM / LARGE  
FIBERGLASS CONTENT:

07%



SMALL / MEDIUM  
FIBERGLASS CONTENT:

03%



Bigger riders require stiffer bindings, so we proportionally increase the fiberglass content from our smallest sizes to the biggest. That's personalized performance for any rider who straps in.

02

## MINIMAL CONTACT

BINDING-TO-BOARD CONTACT

ATLAS:

20%



CONTACT PRO:

05%



FORCE:

20%



CONTACT:

19%



It's a simple fact—the larger your binding's baseplate, the more effect it has on the way your board flexes. Union baseplates are designed to provide supreme strength with the smallest footprint possible—crucially reducing interference with a board's true flex.

# STRONGER.



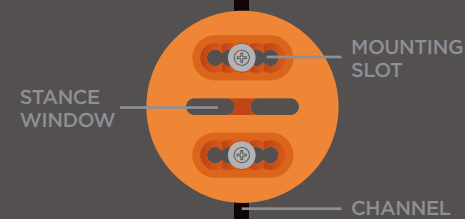
03

## COMPATIBLE DISKS

3 HOLE BOARD PATTERN

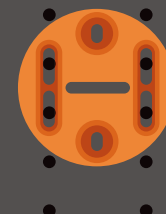


CHANNEL COMPATIBILITY



ALL NEW MINI-DISK

CHANNEL COMPATIBLE



Compatible with any traditional 4x4 mounting system and 3-Hole, along with Burton snowboards featuring The Channel, you can mount Union Bindings on any board you choose.

04

## MULTIZONE HIGHBACK

FLEX ZONE 1 (TOP)

STRENGTH: 50%  
FLEX: 50%

FLEX ZONE 2 (MIDDLE)

STRENGTH: 75%  
FLEX: 25%

FLEX ZONE 3 (BOTTOM)

STRENGTH: 100%  
FLEX: 0%



Dupont™ Zytel® ST Injected Multizone Highbacks are tapered towards the top, providing flex and tweakability where you want it, support and durability where you need it.

# TECH INDUSTRY FIRSTS



Union stands firmly by its original commitment to the evolution of snowboard bindings. That's why, over the last eight years, we have introduced cutting-edge materials and processes, and pioneered new levels of durability and performance. Our commitment is further evidenced by our exceptional sell-through and near zero warranty. We give snowboarders what they want, and back it up 365 days a year.

## 01 METAFUSE NANO- TECHNOLOGY



DuPont™ Zytel® ST Nylon is coated with ultra-stiff nanocrystalline metal particles 1/75,000 the size of a human hair. Light as a feather, with the wear resistance of hardened steel.

## 02 INJECTED MAGNESIUM



This high-tech process produces a material four times the strength of aluminum with only half the weight. Plus, magnesium is easily recycled and remains the eighth most abundant material on the planet.

## 03 EXTRUDED ALUMINUM



Extruded aluminum is one hundred percent pure and maintains its true shape no matter how much wear and tear you inflict upon it. Union was the first company to bring the extrusion process to snowboarding and remains the only one using it.

## 04 ANODIZED ALUMINUM HARDWARE



By increasing the thickness of the natural surface oxide layer, the anodizing process beefs up a metal's strength by thirty percent. It's also significantly lighter than normal hardware.

# STRONGER.



## 05 GRADE 8.8 HARDWARE



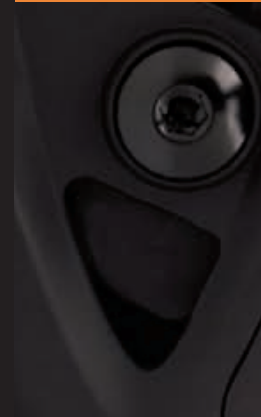
The most commonly used hardware is made from "mild steel" that has a property class of only 4.6. Considering how much stress a binding is put under, we use only the strongest steel (featuring a property class of 8.8) on ALL hardware.

## 06 DUPONT™ ZYTEL® ST NYLON



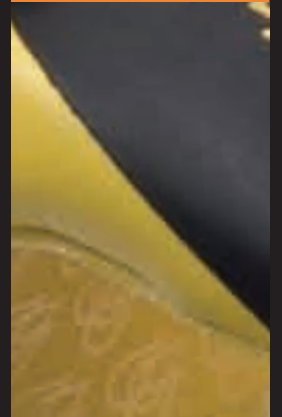
Our entire Union binding collection features only the highest quality DuPont Zytel® nylon. The result is strength, safety and security, as well as a lifetime warranty on all baseplates.

## 07 MACHINED CORING



The CNC process removes excess material to decrease overall weight, while maintaining the strength and integrity of each part. This expensive and time consuming process demonstrates our commitment to product progression.

## 08 SONICFUSED STRAPS



SonicFuse is a multilayer composite, fused together to form a single articulated strap component. A new approach to minimize stitching and increase overall durability.



# METAFUSE-MC

2013  
2014



# MC-METAFUSE METAFUSE TECHNOLOGY.



2013  
2014

- 01 Machined Coring Stage III Atlas Base
- 02 Carbon-Injected Dupont™ Zytel® ST Base
- 03 Asym/Symmetrical Full Carbon Highbacks
- 04 Precision Adjustment Forward Lean
- 05 Injected EVA Bushings
- 06 MetaFuse Heelcups
- 07 All-new 3D Direct-Connect Strap System
- 08 Multi-Layer Tapered Strap Core

- 09 Magnesium Buckles + Aluminum Cage
- 10 All-New Toe Buckle System
- 11 Universal Disks
- 12 CNC Anodized Aluminum Hardware
- 13 All-New Toe Cup Design
- 14 Full Carbon Toe Ramps
- 15 Lifetime Warranty Base

### MetaFuse Heelcups

The lightest and strongest heelcups in the industry.

### CARBON Asymmetrical/Symmetrical Highbacks

Next-level heelside control—the lightest on the market.

### Machined Coring

Process removes material to reduce weight and maintain strength.

### CNC Anodized Aluminum Hardware

The lightest on the market.



CARBON (M/L-XL)

# CHARGER

2013  
2014



ENDORSED BY: Kazuhiro Kokubo

PAGE 18/19    2013-2014 STRONGER    YEAR NINE / DEALER CATALOG UNIONBINDINGCOMPANY.COM

UNION BINDING COMPANY 

# CHARGER A LEGEND IN THE MAKING.



2013  
2014



- 01 Stage III Atlas Base
- 02 Carbon-Injected Dupont™ Zytel® ST Base
- 03 Full Carbon Highbacks
- 04 Shift-on-the-Fly Forward Lean
- 05 Injected EVA Bushings
- 06 All-New CNC Machined 3D Aluminum Heelcups
- 07 3D Direct-Connect Strap System
- 08 Multi-Layer Tapered Strap Core

- 09 Magnesium Buckles
- 10 All-New Toe Buckle System
- 11 Universal Disks
- 12 All-New Open Toe Straps
- 13 Grade 8.8 Hardware
- 14 All-New Toe Cup Design
- 15 Lifetime Warranty Base

### Carbon Highback

Light, strong, and ultra responsive.



### All-New Toe Cup

Multi-Positional options with open Ultra Grip™ design.



### CNC Machined 3D Heelcups

Process removes material to reduce weight and maintain strength.



### Stage III Base — Carbon Dupont™ Zytel®

New standards in performance-to-weight ratio. Lifetime warranty.



BLACK/RED  
(M/L/XL)

# FACTORY

2013  
2014



# FACTORY OPTIMUM OUTPUT.



2013  
2014



- 01 Stage III Atlas Base
- 02 Raw Injected Dupont™ Zytel® ST Base
- 03 Team Highbacks
- 04 Shift-on-the-Fly Forward Lean
- 05 Injected EVA Bushings
- 06 All-New Extruded 3D Aluminium Heelcups
- 07 3D Direct-Connect Strap System
- 08 All-New SONICFUSED Ankle Straps

- 09 Magnesium Buckles
- 10 All-New Toe Buckle System
- 11 Universal Disks
- 12 Grade 8.8 Hardware
- 13 All-New Toe Cup Design
- 14 Canted 2.5 degree Gas Pedals
- 15 Lifetime Warranty Base
- 16 Endorsed by Travis Rice

**All-New Extruded 3D Aluminium Heelcups**  
Process removes material to reduce weight and maintain strength.

**Stage III Base — Raw Dupont™ Zytel®**  
Pigment free nylon provides increased base stiffness.

**All-New SonicFused Ankle Straps**  
A new approach to minimize stitching and increase overall durability.

**Canted Gas Pedals**  
Ideal for riders who want a wide stance. Extra leverage for ollie power.



BLACK/YELLOW  
(M/L/XL)

ASADACHI 6  
(M/L/XL)

# ATLAS

2013  
2014



# ATLAS NEXT GENERATION PERFORMANCE.



2013  
2014



- 01 Stage III Atlas Base
- 02 Dupont™ Zytel® ST Base
- 03 Symmetrical Atlas Highbacks
- 04 Shift-on-the-Fly Forward Lean
- 05 Dual Density EVA Bushings
- 06 All-New Extruded 3D Aluminum Heelcups
- 07 3D Direct-Connect Strap System
- 08 Multi-Layer Tapered Strap Core

- 09 Magnesium Buckles
- 10 All-New Toe Buckle System
- 11 Universal Disks
- 12 Grade 8.8 Hardware
- 13 All-New Toe Cup Design
- 14 Lifetime Warranty Base

**Stage III Base — Dupont™ Zytel®**  
New standards in performance-to-weight ratio. Lifetime warranty.

**All-New Extruded 3D Aluminum Heelcups**  
Process removes material to reduce weight and maintain strength.

**Multizone Atlas Highbacks**  
Extremely comfortable, lightweight and responsive—No highback bite.

**Magnesium Buckles**  
Twice as light, and four times stronger than aluminum.



BLACK  
(M/L-L/XL)

ACID GREEN  
(S/M-M/L-L/XL)

HAZARD ORANGE  
(S/M-M/L-L/XL)

STONE/RED  
(M/L-L/XL)



# CONTACT PRO

2013  
2014



# CONTACT PRO GIGI TESTED... RÜF APPROVED.



2013  
2014



- 01 All-New Contact Pro Base
- 02 Dupont™ Zytel® ST Base
- 03 All-New Asymmetrical Contact Pro Highbacks
- 04 Shift-on-the-Fly Forward Lean
- 05 All-New Multi Density EVA Bushings
- 06 All-New Extruded 3D Aluminum Heelcups
- 07 3D Direct-Connect Strap System
- 08 Multi-Layer Tapered Strap Core

- 09 Magnesium Buckles
- 10 All-New Toe Buckle System
- 11 All-New Universal Mini-Disk
- 12 Grade 8.8 Hardware
- 13 All-New Toe Cup Design
- 14 Tested and Approved by Gigi RUF

#### Universal Minidisk

Minimal Contact Footprint allows even board flex.



#### Contact Pro Highbacks

Incredibly light and comfortable—Gigi RUF approved.



#### Multi Density EVA Bushings

All New - Multizone Full Bottom Bushing System



#### Contact Pro Base — Lifetime Warranty

Strength-to-weight ratio second to none.



BLACK/RED  
(M/L/LXL)

ACID GREEN  
(S/M-M/L-L/XL)

WHITE/RED  
(M/L-L/XL)

# FORCE

2013  
2014



# FORCE WORKHORSE DEPENDABILITY.



2013  
2014

- 01 All-New Stage IV Base
- 02 Dupont™ Zytel® ST Base
- 03 All-New Multizone Force Highback
- 04 Shift-on-the-Fly Forward Lean
- 05 All-New Dual Density Injected EVA bushings
- 06 All-New Extruded 3D Aluminum Heelcups
- 07 Symmetric 3D Direct-Connect Strap System
- 08 Multi-Layer Tapered Strap Core

- 09 Magnesium Buckles
- 10 All-New Toe Buckle System
- 11 Universal Disks
- 12 Grade 8.8 Hardware
- 13 All-New Toe Cup Design
- 14 Lifetime Warranty Base

**Stage IV Base —  
Lifetime Warranty**  
Guaranteed against  
breakage for life.

**Force Multizone  
Highbacks**  
Next level heelside  
response and  
board control.

**Dual Density  
Injected Bushings**  
Two separate zones  
provide supreme  
dampening and true flex.

**Extruded Anodized  
Aluminum Heelcups**  
Anodizing process adds  
30% strength - completely  
indestructible.



MATTE BLACK  
(M/L-L/XL)

MATTE WHITE  
(M/L-L/XL)

MATTE YELLOW  
(M/L-L/XL)

MATTE SEA FOAM  
(M/L-L/XL)

MATTE RED  
(S/M-M/L-L/XL)

MATTE GREEN  
(M/L-L/XL)

# CONTACT

2013  
2014



# CONTACT

## TRUE BOARD FLEX, TRUE BOARD CONTROL.



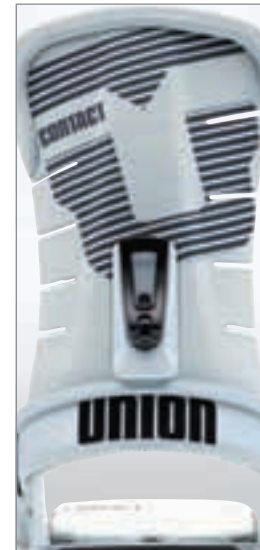
2013  
2014

- 01 Contact Base
- 02 Dupont™ Zytel® ST Base
- 03 Fusion Highbacks
- 04 Shift-on-the-Fly Forward Lean
- 05 Dual Density Injected EVA Bushings
- 06 Extruded Anodized Aluminum Heelcups
- 07 Symmetric 3D Direct-Connect Strap System
- 08 Multi-Layer Tapered Strap Core

- 09 Injected Aluminum Buckles
- 10 All-New Toe Buckle System With Push-Pin
- 11 Universal Disks
- 12 Grade 8.8 Hardware
- 13 All-New Toe Cup Design
- 14 Lifetime Warranty Base

### Fusion Highbacks

Lateral tweakability in any temperature.



### 3D Direct-Connect Strap System

Multi-Layer Tapered Strap Core evenly distributes pressure.



### Injected Dual Zone EVA Bushings

Two separate zones provide improved dampening and true flex.



### Open Toe Straps

Multi-Positional options with open Ultra Grip™ Design.



BLACK/WHITE  
(M/L-XL)

RASTA  
(S/M-M/L-L/XL)

MATTE STONE  
(M/L-L/XL)

BLUE/YELLOW  
(S/M-M/L-L/XL)

# FLITE PRO

2013  
2014



# FLITE PRO

## TECHNICALLY LIGHT, TECHNOLOGY HEAVY.



2013  
2014

- 01 Flite Base
- 02 Dupont™ Zytel® ST Base
- 03 Flite Pro Highbacks
- 04 Shift-on-the-Fly Forward Lean
- 05 Dual Density Injected EVA Bushings
- 06 Extruded Anodized Aluminum Heelcups
- 07 Symmetric 3D Direct-Connect Strap System
- 08 Single-Layer 3D Tapered Strap Core

- 09 Injected Aluminum Buckles
- 10 All-New Toe Buckle System With Push-Pin
- 11 Universal Disks
- 12 Grade 8.8 Hardware
- 13 All-New Toe Cup Design
- 14 Lifetime Warranty Base

### Flite Pro Highback

Incredibly light and comfortable - Gigi Rüb approved.

### Single-Layer 3D Tapered Strap Core

Evenly distributes pressure and provides fast response.

### All-New Push-Pin Toe Buckles

Fast in, and fast out. Union Aluminum is second-to-none.

### All-New Open Toe Straps

Multi-Positional options with open Ultra Grip™ Design



BLACK/ORANGE  
(M/L/XL)

BLACK/CAMO  
(S/M-L/L/XL)

BLACK/BLUE  
(S/M-M/L-L/XL)



# FLITE F#CKING LIGHT.



2013  
2014



- 01 Flite Base
- 02 Dupont™ Zytel® ST Base
- 03 Flite Highbacks
- 04 Quick-Adjust Forward Lean
- 05 Dual Density Injected EVA Bushings
- 06 Extruded Anodized Aluminum Heelcups
- 07 Direct-Connect Strap System
- 08 PU Leather Straps

- 09 Injected Aluminum Buckles
- 10 All-New Toe Buckle System With Push-Pin
- 11 Universal Disks
- 12 Grade 8.8 Hardware
- 13 Lifetime Warranty Base

#### Flite Base— Dupont™ Zytel® ST

Super lightweight, freestyle oriented design. Lifetime warranty.

#### Flite Highback

Pipe, Park and Pow. A well-rounded freestyle driven design.

#### Dual Density Injected EVA Bushing

Two density bushings provide improved dampening and true flex.

#### Extruded Anodized Aluminum Heelcup

Anodizing process adds 30% strength—completely indestructible.



BLACK  
(M/L/XL)

WHITE  
(M/L/XL)

CMYK  
(S/M-L/L/XL)

# DLX

2013  
2014



**DLX**  
**BUILT**  
**TO LAST.**



2013  
 2014



- 01 Stage I Base
- 02 Dupont™ Zytel® ST Base
- 03 Multizone Highbacks
- 04 Quick-Adjust Forward Lean
- 05 Injected EVA Bushings
- 06 Extruded Anodized Aluminum Heelcups
- 07 Direct-Connect Strap System
- 08 Injected Aluminum Buckles

- 09 All-New Toe Buckle System With Push-Pin
- 10 Universal Disks
- 11 Grade 8.8 Hardware
- 12 Lifetime Warranty Base

**Injected EVA Bushings**

Lightweight and durable material allows for true board flex.

**Open Toe Straps**

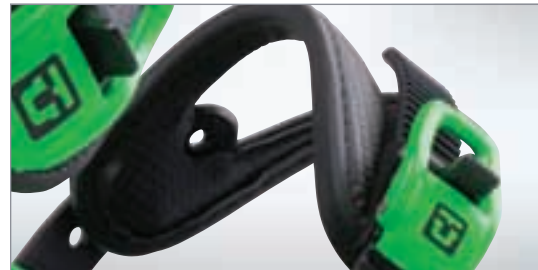
Multi-Positional options with open Ultra Grip™ Design.

**Stage I Lifetime Warranty Base**

Lightweight and bombproof. Ask Joe Sexton.

**Injected Aluminum Buckles**

Fast in, and fast out. Union Aluminum is second-to-none.



BLACK  
 (M/L-XL)

GREEN  
 (M/L-XL)

# MINI FLITE BUILT TO LAST AT GROM SCALE.



2013  
2014



- 01 Miniflite Base
- 02 Dupont™ Zytel® ST Base
- 03 Fusion Highbacks
- 04 Shift-on-the-Fly Forward Lean
- 05 EVA Bushings
- 06 Extruded Anodized Aluminum Heelcups
- 07 Direct-Connect Strap System
- 08 Injected Aluminum Buckles
- 09 All-New Toe Buckle System With Push-Pin
- 10 Universal Disks
- 11 Grade 8.8 Hardware
- 12 Lifetime Warranty Base

**Mini Flite Base—  
Dupont™ Zytel® St**  
Super lightweight,  
freestyle-oriented design.

**Extruded Anodized  
Aluminum Heelcup**  
Anodizing process adds  
30% strength—completely  
indestructible.

**All-New Push-Pin  
Toe Buckles**  
Fast in, and fast out.  
Union Aluminum is  
second-to-none.

**Fusion Highback**  
Forgiving lateral flex  
in any temperature.



WHITE  
(S)



BLACK  
(S)

# LEGACY

2013  
2014



# LEGACY FEMALE PROWESS.



2013  
2014



- 01 Stage III Atlas Base
- 02 Dupont™ Zytel® ST Base
- 03 Asym/Symmetrical Legacy Highbacks
- 04 Shift-on-the-Fly Forward Lean
- 05 Injected EVA Bushings
- 06 Extruded Anodized Aluminum Heelcups
- 07 3D Direct-Connect Strap System
- 08 Multi-Layer Tapered Strap Core

- 09 Magnesium Buckles
- 10 All-New Toe Buckle System With Push-Pin
- 11 Universal Disks
- 12 Grade 8.8 Hardware
- 13 All-New Female Specific Toe Cup Design
- 14 Lifetime Warranty Base

**Female-Specific Stage III Base—Dupont™ Zytel®**  
New Standards in performance-to-weight ratio. Lifetime Warranty.

**Magnesium Buckles**  
Twice as light, and four times stronger than aluminum.

**3D Direct-Connect Strap System**  
Multi-Layer Tapered Strap Core evenly distributes pressure.

**Asymmetrical/Symmetrical Anatomical Highbacks**  
Maximum tweakability and heelside control.



METALLIC PURPLE  
(S-M)

# TRILOGY

2013  
2014



# TRILOGY TRUE TO FORM.



2013  
2014

- 01 Trilogy II Base
- 02 Dupont™ Zytel® ST Base
- 03 All-New Multizone Trilogy Highback
- 04 Shift-on-the-Fly Forward Lean
- 05 Injected EVA Bushings
- 06 CNC Machined Heelcups
- 07 Symmetric 3D Direct-Connect Strap System
- 08 Multi-Layer Tapered Strap Core

- 09 Magnesium Buckles
- 10 All-New Toe Buckle System With Push-Pin
- 11 Universal Disks
- 12 Grade 8.8 Hardware
- 13 All-New Female Specific Toe Cup Design
- 14 Lifetime Warranty Base

Trilogy II Base—  
Lightest On The Market  
Female Specific  
High-End Performance.

3D Direct - Connect  
Strap System  
Multi-Layer Tapered Strap  
Core evenly  
distributes pressure.

Magnesium Buckles  
Twice as light, and four  
times stronger than  
aluminum.

Trilogy Multizone  
Highback  
Next level heelside  
response and  
board control.



BLACK  
(S-M)

WHITE  
(S-M)

SEA FOAM  
(S-M)



# MILAN

2013  
2014



# MILAN ALL DAY COMFORT.



2013  
2014



- 01 Milan Base
- 02 Dupont™ Zytel® ST Base
- 03 Fusion Lady Highback
- 04 Shift-on-the-Fly Forward Lean
- 05 Dual Density Injected EVA Bushings
- 06 Extruded Anodized Aluminum Heelcups
- 07 Simmetric 3D Direct-Connect Strap System
- 08 Multi-Layer Tapered Strap Core

- 09 Injected Aluminum Buckles
- 10 All-New Toe Buckle System With Push-Pin
- 11 Universal Disks
- 12 Grade 8.8 Hardware
- 13 All-New Female Specific Toe Cup Design
- 14 Lifetime Warranty Base

#### Milan Fusion Highbacks

Lateral tweakability in any temperature.



#### 3D Direct-Connect Strap System

Multi-Layer Tapered Strap Core evenly distributes pressure.



#### Injected EVA Bushings

1st Quality EVA provides improved dampening and true board flex.



#### All-New Push-Pin Toe Buckles

Fast in, and fast out. Union Aluminum is second-to-none.



WHITE  
(S-M)

MAGENTA  
(S-M)

TIFFANY  
(S-M)

# ROSA HIGH VALUE, LOW COST.



2013  
2014



- 01 Flite Base
- 02 Dupont™ Zytel® ST Base
- 03 Asym/Symmetrical Rosa Highbacks
- 04 Shift-on-the-Fly Forward Lean
- 05 Injected EVA Bushings
- 06 Extruded Anodized Aluminum Heelcups
- 07 Symmetric 3D Direct-Connect Strap System
- 08 Single-Layer 3D Tapered Strap Core

- 09 Injected Aluminum Buckles
- 10 All-New Toe Buckle System With Push-Pin
- 11 Universal Disks
- 12 Grade 8.8 Hardware
- 13 All-New Female Specific Toe Cup Design
- 14 Lifetime Warranty Base

#### Rosa Womens-Specific Highbacks

More forgiving lightweight design for optimal comfort.



#### Single-Layer 3D Tapered Strap Core

Evenly distributes pressure and provides fast response.



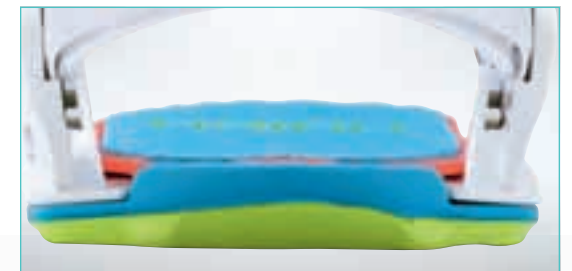
#### All-New Open Toe Straps

Multi-Positional options with open Ultra Grip™ Design.



#### Injected Dual Zone EVA Bushings

Two separate zones provide improved dampening and flex.



SILVER  
(S-M)

CMYK  
(S-M)

MAGENTA  
(S-M)

# FLITE-LADY

## CUSTOM COMFORT, ULTIMATE CONVENIENCE.

2013  
2014



- 01 Flite Base
- 02 Dupont™ Zytel® ST Base
- 03 Flite Lady Highbacks
- 04 Quick-Adjust Forward Lean
- 05 Injected EVA Bushings
- 06 Extruded Anodized Aluminum Heelcups
- 07 Direct-Connect Strap System
- 08 Injected Aluminum Buckles
- 09 All-New Toe Buckle System With Push-Pin
- 10 Universal Disks
- 11 Grade 8.8 Hardware
- 12 Lifetime Warranty Base

### Flite Lady Base With EVA Bushings

Super lightweight, freestyle-oriented design. Lifetime warranty.

### Extruded Aluminum Heelcups

The strongest and most versatile aluminum heelcup on the market.

### Quick-Adjust Forward Lean

Tool-Free-Adjuster allows on-the-fly forward lean adjustment.

### Dupont™ Zytel® ST Highbacks

Maintains flexibility and strength in the widest range of temperatures.



BLUE  
(S-M)



WHITE  
(S-M)

# UNION CUSTOM HOUSE

**CUSTOMIZED PRODUCT**

**PRODUCT PROGRESSION**

**FRIENDSHIP**

**LIMITED EDITION**

**PAST COLLABORATIONS:**

COBRA DOGS  
JOE SEXTON - JIB SERIES  
DANNY KASS - TITTIES  
HOLDEN OUTERWEAR  
PABST BLUE RIBBON  
CANADIAN PRIDE  
AIRBLASTER - INVERTER  
MILOSPORT  
CEE 'EM WAIKAY  
SATELLITE  
RIDE TO PARTY  
FIAT FREESTYLE TEAM  
KICKER FUCKER CHICKEN  
ADVITA  
IUTER CLAN  
SNOWBOARD MAG  
DANNY KASS - BONED AGE  
SUPERB MAGAZINE  
SNOWPARK.IT  
ONBOARD MAGAZINE  
CAPITA - ULTRAFEAR



# UNION SOFTGOODS COLLECTION



## Icon Tee

Sizes: M-L-XL, 100% Cotton  
Silver, White, and Orange on Black T-Shirt.



## Stronger Tee

Sizes: M-L-XL, 100% Cotton  
Olive, Brown, and Orange on Orange T-Shirt.



## Factory Tee

Sizes: M-L-XL, 100% Cotton  
Grey on Black T-Shirt.



## Monogram Tee

Sizes: M-L-XL, 100% Cotton  
Grey, and Dark Grey on Black T-Shirt.



## Union Custom House Pocket Tee

Sizes: M-L-XL, 100% Cotton  
Light Grey on Grey T-Shirt.



## Icon Zip Hoodie

Sizes: M-L-XL, 100% Cotton  
Silver, White, and Orange on Black Hoodie.



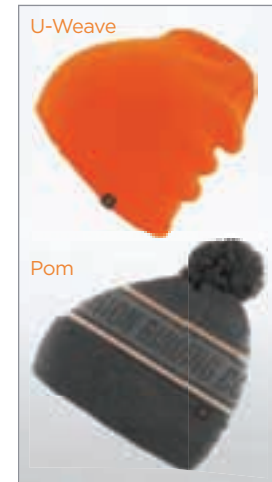
## Union Binding Co. Zip Hoodie

Sizes: M-L-XL, 100% Cotton  
Light Grey and Orange on Grey Hoodie.



## Beanies

One Size Fits All  
Orange or Grey Pom



## Trucker Cap

One Size Fits All  
Assorted Colors.





DAN BRISSE DYLAN ALITO / STEVIE ALTERS / ANTOINE BADUEL /

BRUCE BANNISTER / LORENZO BARBIERI / STEFANO BENCHIMOL / ALESSANDRO BENUSSI / DAVID BERTSCHINGER KARG / DOMINIK

DUSTIN CRAVEN

BETSCHART / CODY BIERSDORF / SEAN BLACK / SCOTT BLUM / TED BORLAND / ANTON BORODACHEV / DOMINIK

BRYAN IGUCHI BRUNNER / ANDREW BURNS / TOM BURT /

LORENZO BUZZONI / JONAS CARLSON / ANTO CHAMBERLAND / MATT CUMMINS / TEMPLE CUMMINS / CHRIS CUNNINGHAM / TANIA DE TOMAS /

THOMAS EBERHARTER / CALE ZIMA

E-MAN / BORJA ESPAÑA / MELISSA EVANS / ALEX FISCHER /

DYLAN GAMACHE / JODI GEE / ANDREW GEEVES / TRAVIS RICE BRENDAN GERARD / SCOTTY GOODALE /

DAVID GURBOWICZ / BLAIR HABENICHT / LAURA HADAR / JULIEN HARICOT / VILLE HIETALAHTI / PETR HORAK /

NIK HUBER / SONDRE JOE SEXTON

HYLLAND / MIHAIL ILIYN / HENRY JACKSON / CLEMENS JEZLER / DASH KAMP / TEO KONTTINEN / MARKU KOSKI / RETO LAMM / ZEBASTIAN

SCOTT STEVENS LANDMARK / CHRIS LARSON /

BRANDON COCARD

ARTHUR LONGO / KLAUS LOTTO / MARY LUGGEN / BOBBY MEEKS / JONAS MICHILLOT / SEBASTIAN MULLER / NICO NATALUCCI /

SAMUEL NELSON / PHIL JACQUES

JAMES NIEDERBERGER / NUUTTI NIEMELÄ / JONATHAN NILSSON / ANDY NUDDS / JOHNNY O'CONNOR / KALLE

KEVIN JONES OHLSON / ALEXANDR OSOKIN / CALUM

PATON / MATT PENNY / MANUEL PIETROPOLI / OLLIE PLUMLEY /

MARCUS RAND / MIKE RANQUET / MIKE RAV / BRENDON REGO / CHRIS ROACH / JESS KIMURA

TARQUIN ROBBINS / MARTIN RUGE / JONNY RUSSELL / MARK SALAS MAÑOSA /

TODD SCHLOSSER / TJ SCHNEIDER / MAT SCHAER

FORREST SHEARER / LOGAN SHORT / MARTIN SKOGHOLT / GIGI RÜF BRIAN SKORUPSKI / STEN SMOLA / STIAN SOLBERG / JANI

SORASALMI / PAL SORENSE / TARJEI KAZU KOKUBO

SPORASTOYL / SAMMY SPITERI / DAVO STRUBER / GABE TAYLOR / FACUNDO VIAL SOTOMAYOR / CODY WARBLE /

DURELL WILLIAMS / NICHOLAS WOLKEN / DANNY KASS

# LINE OVERVIEW

## MEN'S COLLECTION

# 2013 2014



**MC-METAfuse**

CARBON



**CHARGER**

BLACK/RED



BLACK-N-YELLOW

ASADACHI VI



BLACK/WHITE

ACID GREEN

HAZARD ORANGE

STONE/RED



BLACK/RED

BLACK/ACID GREEN

WHITE/RED

**CONTACT PRO**



**FORCE**

MATTE BLACK

MATTE WHITE

MATTE YELLOW

MATTE SEAFOAM

MATTE RED

MATTE GREEN



**CONTACT**

BLACK/WHITE

RASTA

MATTE STONE

BLUE YELLOW



**FLITE PRO**

BLACK/ORANGE

BLACK/CAMO

BLACK/BLUE



**FLITE**

BLACK

WHITE

CMYK



**DLX**

**MINI FLITE**

BLACK

GREEN

BLACK

WHITE

# WOMEN'S COLLECTION



**LEGACY**

METALLIC PURPLE



**TRILOGY**

BLACK

WHITE

SEAFOAM



**MILAN**

WHITE

MAGENTA

TIFFANY



**ROSA**

SILVER

CMYK

MAGENTA



**LADY FLITE**

BLUE

WHITE