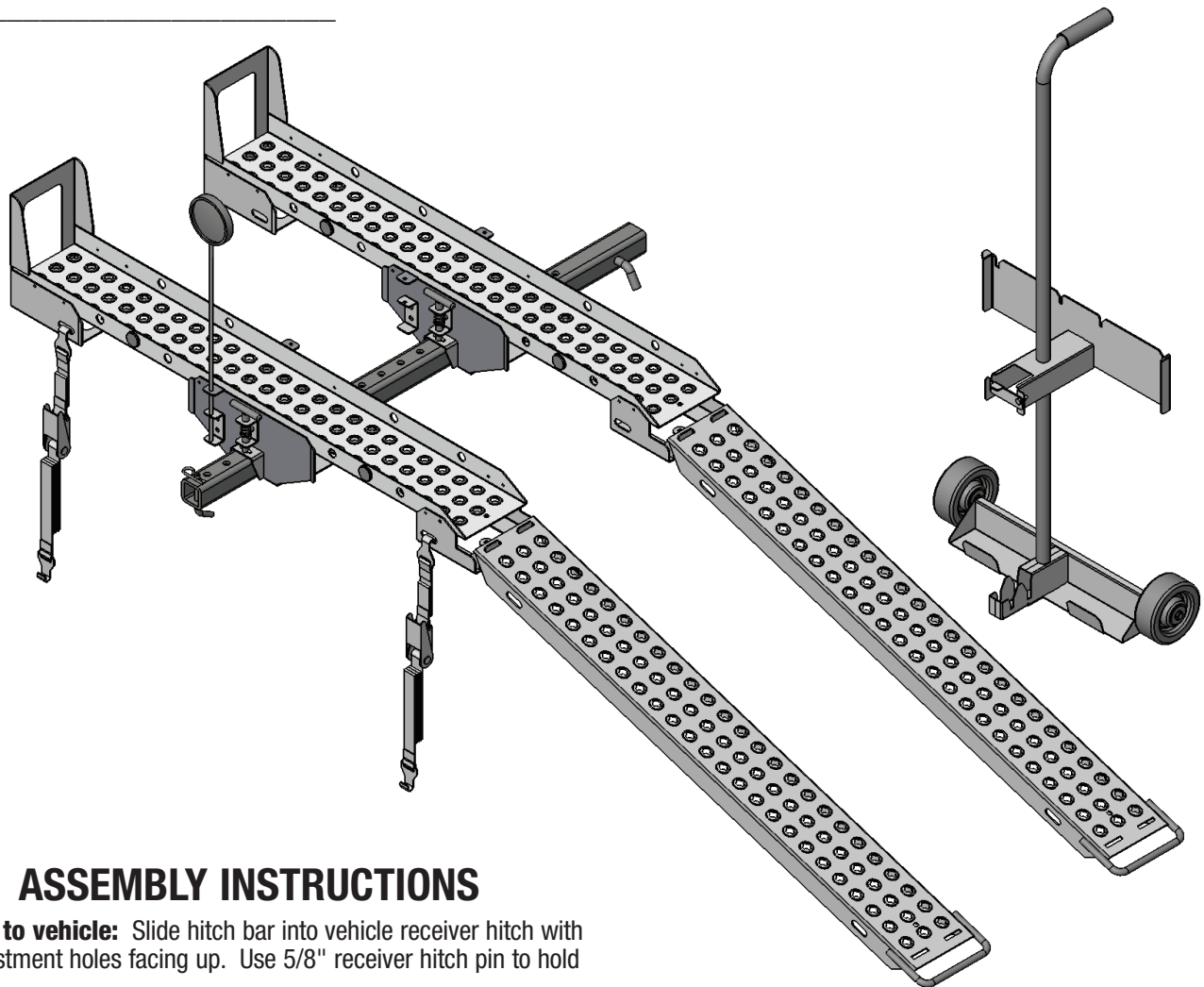


SERIAL NUMBER:

REV: 01/10

DATE PURCHASED:



ASSEMBLY INSTRUCTIONS

To attach to vehicle: Slide hitch bar into vehicle receiver hitch with ramp adjustment holes facing up. Use 5/8" receiver hitch pin to hold in place.

To attach ramps: Ramps can be attached in either direction for unloading. Slide first ramp assembly onto hitch bar in close proximity to vehicle and secure with spring loaded lock pin. Slide second ramp assembly onto hitch bar and adjust to the desired width. Make sure spring loaded lock pin is securely latched into adjustment hole. Insert 3/8" safety pin into the last hole on hitch bar. Insert one reflector into reflector retainer holes.

To load equipment: Remove ramp lock pins and pull ramps out from channel assembly. Load item to be carried onto ramps.

To transport equipment: Secure equipment to ramp assembly with two tie down straps provided.

To unload equipment: Reverse above procedures.



INSTRUCTIONS AND PARTS MANUAL PLUGR EZ100 EZ HAULR TRANSPORT SYSTEM

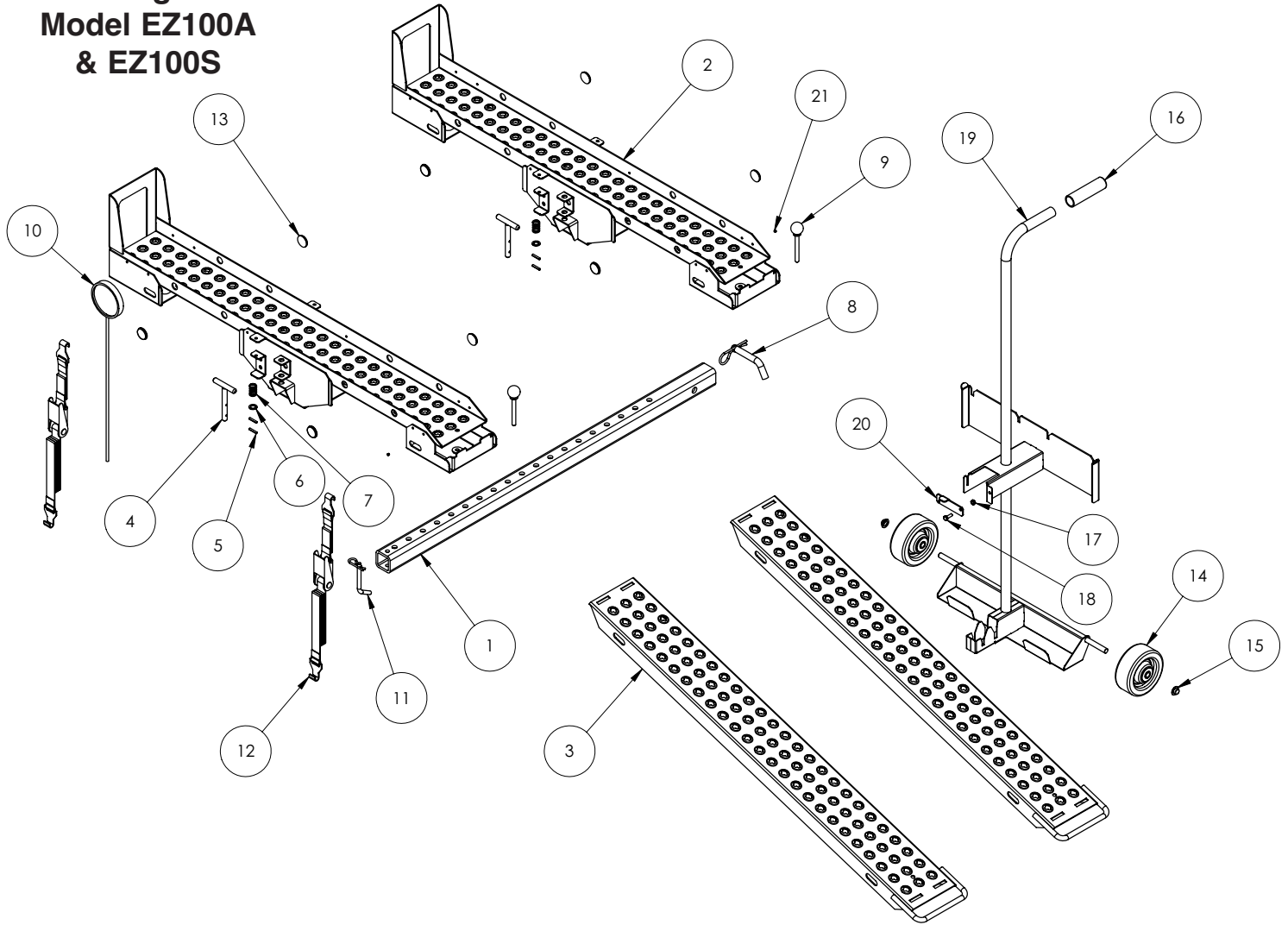
PLUGR

PLUGR is a registered trademark of SourceOne Inc., a subsidiary of IMSCORP, Lincoln, NE.

1030 SW 6th Street, Lincoln, NE 68522 • (888) 418-9065 • Fax (402) 474-6605

Website: www.sourceonex.com/plugr • Email: OPESales@sourceonex.com

Parts Diagram for Model EZ100A & EZ100S



Parts List for Model EZ100A (Aluminum)

Parts List for Model EZ100S (Steel)

ITEM #	PART #	REQ'D	DESCRIPTION
1	1386	1	EZ Haulr Hitch Bar
2	1601	2	Aluminum EZ Haulr Channel Assembly
3	1602	2	Aluminum EZ Haulr Ramp
4	1389	2	Retainer Pin
5	1459	4	Spring Pin 3/16" x 1.00
6	1329	2	1/2" Flat Washer
7	1455	2	Spring .059 x .68 O.D. x 1.300 Long
8	1457	1	5/8" Receiver Hitch Pin
9	1456	2	Pin & Lanyard
10	1469	1	EZ Haulr Flag
11	1473	1	3/8" Hitch Pin
12	1458	2	Tie Down Straps
13	1501	8	Reflector Red 1-1/4" Dia.
14	1547	2	Wheel 5" x 2" Wide x 1/2" Bore
15	1548	2	Push Nut 1/2" Shaft
16	1549	1	Handle Grip 1" X 4-1/2" Long Black Plastic
17	1029	1	Nylock Nut, 1/4-20 UNC
18	1252	1	Hex Head Bolt, 1/4-20 x 3/4"
19	1525	1	EZ Haulr Cart Frame
20	1527	1	EZ Haulr Cart Frame Lock Plate
21	1477	2	Rivet, 3/16 x 1/4

ITEM #	PART #	REQ'D	DESCRIPTION
1	1386	1	EZ Haulr Hitch Bar
2	1380	2	Steel EZ Haulr Channel Assembly
3	1381	2	Steel EZ Haulr Ramp
4	1389	2	Retainer Pin
5	1459	4	Spring Pin 3/16" x 1.00
6	1329	2	1/2" Flat Washer
7	1455	2	Spring .059 x .68 O.D. x 1.300 Long
8	1457	1	5/8" Receiver Hitch Pin
9	1456	2	Pin & Lanyard
10	1469	1	EZ Haulr Flag
11	1473	1	3/8" Hitch Pin
12	1458	2	Tie Down Straps
13	1501	8	Reflector Red 1-1/4" Dia.
14	1547	2	Wheel 5" x 2" Wide x 1/2" Bore
15	1548	2	Push Nut 1/2" Shaft
16	1549	1	Handle Grip 1" X 4-1/2" Long Black Plastic
17	1029	1	Nylock Nut, 1/4-20 UNC
18	1252	1	Hex Head Bolt, 1/4-20 x 3/4"
19	1525	1	EZ Haulr Cart Frame
20	1527	1	EZ Haulr Cart Frame Lock Plate
21	1477	2	Rivet, 3/16 x 1/4