



Task-based Activity Cover Sheet

Task Title: Compare Hotel Room Size

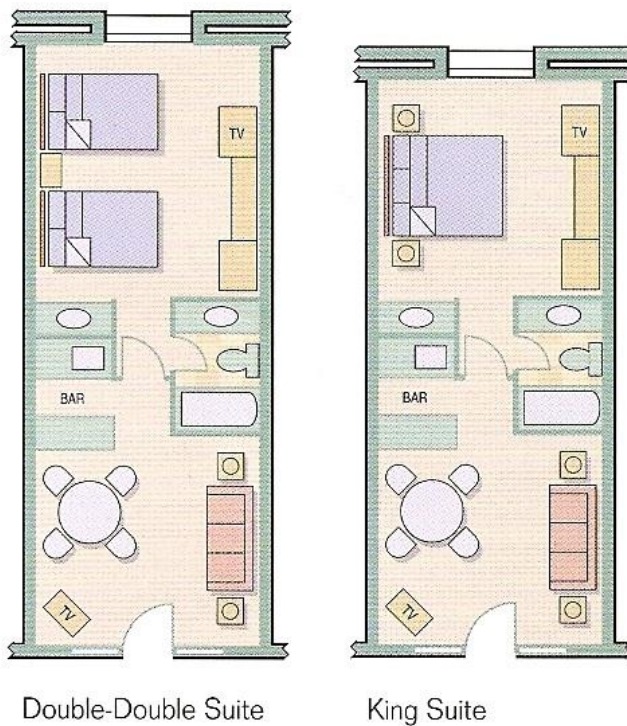
Learner Name:	
Date Started:	Date Completed:
Successful Completion: Yes ___ No ___	
Goal Path: Employment ___ Apprenticeship ___ Secondary School ___ Post Secondary ___ Independence ✓	
Task Description: The learner will use the attached floor plans and dimensions to calculate and compare hotel room sizes.	
Competency: C: Understand and Use Numbers	Task Group(s): C3: Use Measures
Level Indicators: C3.2: Use measures to make one-step calculations	
Performance Descriptors: see chart on last page or click here.	
Links to skill building activities: see the last page or click here.	
Materials Required: <ul style="list-style-type: none">• Pen/pencil• Scrap paper/calculator• Attached floor plans	
ESKARGO: <ul style="list-style-type: none">• Calculates using numbers expressed as whole numbers, fractions, decimals, percentages, and integers• Interprets and represents area and volume using symbols and abbreviations (e.g., m³)• Understands and uses formulas for finding the perimeter, area, and volume of simple, common shapes• Chooses and performs required operation(s); may make inferences to identify required operation(s)• Selects appropriate steps to solutions• Uses strategies to check accuracy (e.g., estimating, using a calculator, repeating a calculation, using the reverse operation)	
Attitudes: Practitioner, We encourage you to talk with the learner about attitudes required to complete this task set. The context of the task has to be considered when identifying attitudes. With your learner, please check one of the following: <input type="checkbox"/> Attitude is not important <input type="checkbox"/> Attitude is somewhat important <input type="checkbox"/> Attitude is very important	

Task Title: Compare Hotel Room Size

When travelling or booking hotel rooms it is important to know the size of the room if you need extra space.

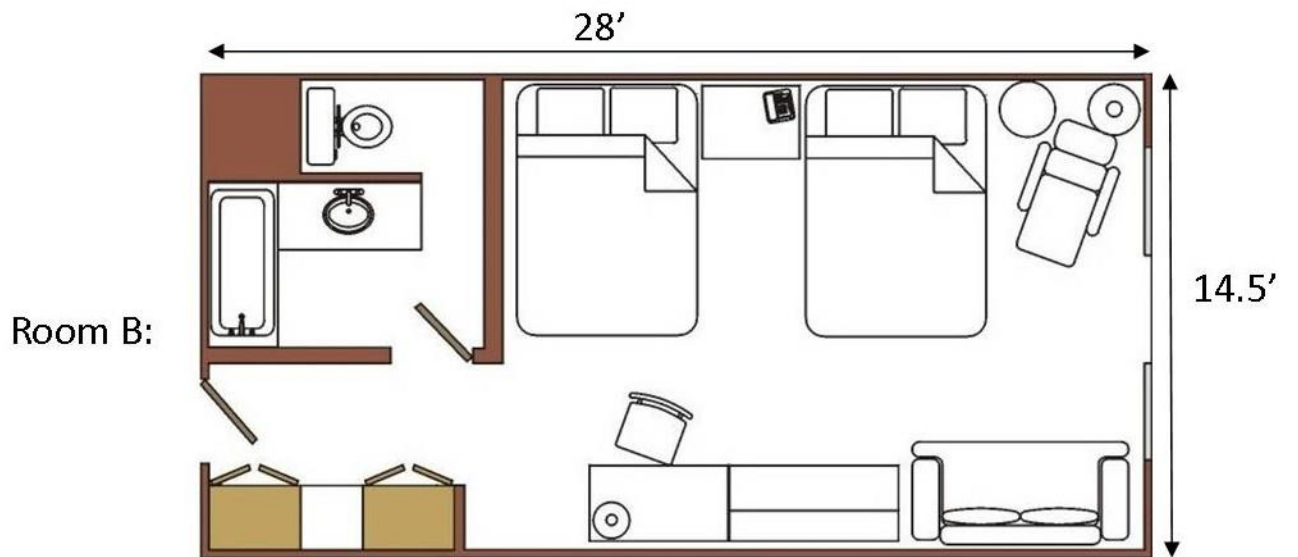
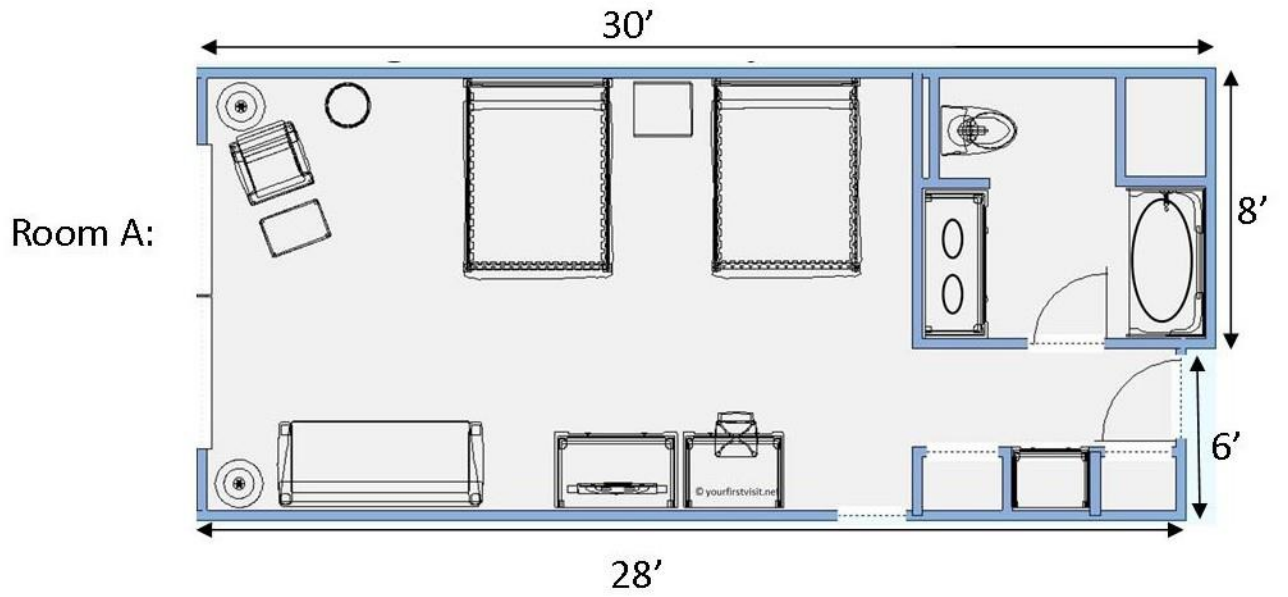
Learner Information and Tasks:

Task 1: Calculate what the square foot difference is between the “Double-Double Suite” and the “King Suite” shown here. Both rooms are 14’ wide. The Double-Double Suite is 35’ long, and the King Suite is 29’ long.



Task 2: Using the floor plans on the next page, determine which hotel room is larger, and by how many square feet.

Hotel Room Floor Plans:





Task Title: Compare Hotel Room Size

Answer Key

Task 1: Calculate how what the difference is between the “Double-Double Suite” and the “King Suite”. Both rooms are 14’ wide. The Double-Double Suite is 35’ long, and the King Suite is 29’ long.

DDS: $14' \times 35' = 490$ sq feet

KS: $14' \times 29' = 406$ sq feet

$490 - 406 = \mathbf{84}$ sq feet

Task 2: Using the floor plans on the next page, determine which hotel room is larger.

Room A: $30' \times 8' = 240$ sq ft

$28' \times 6' = 168$ sq ft

$240 + 168 = 408$ sq feet

Room B: $28' \times 14.5' = 406$ sq feet

Room A is 2 square feet larger than Room B.



Task Title: Compare Hotel Room Size

Performance Descriptors		Needs Work	Completes task with support from practitioner	Completes task independently
C3.2	<ul style="list-style-type: none"> calculates using numbers expressed as whole numbers, fractions, decimals, percentages and integers 			
	<ul style="list-style-type: none"> understands and uses formulas for finding the perimeter, area and volume of simple, common shapes 			
	<ul style="list-style-type: none"> chooses and performs required operation(s); may make inferences to identify required operation(s) 			
	<ul style="list-style-type: none"> selects appropriate steps to solutions 			
	<ul style="list-style-type: none"> uses strategies to check accuracy (e.g. estimating, using a calculator, repeating a calculation, using the reverse operation) 			

This task: was successfully completed___ needs to be tried again___

Learner Comments

Instructor (print)

Learner Signature



Skill Building Activities

Links to Online Resources:

<https://www.khanacademy.org/math/pre-algebra/measurement/perimeter/v/comparing-area-and-perimeter>

- 5.3 minute video comparing areas and perimeters of rectangles

<https://www.khanacademy.org/math/pre-algebra/measurement/rectangle-area-perimeter-word-pr/v/comparing-area> - 2.21 minute video featuring area and perimeter word problems

<https://www.khanacademy.org/math/pre-algebra/measurement/area-basics/e/area-of-squares-and-rectangles> - Area problem questions

<http://www.mathtv.com/> - Geometry – Area & Perimeter

<http://www.wikihow.com/Measure-a-Room> - How to measure a room, with pictures

http://www.helpingwithmath.com/by_subject/geometry/geo_area.htm - How to calculate area

LearningHUB online courses available:

- **Math, Independent Study (assigned by practitioner after assessment)**
 - Multiplication/Division Assignment
 - Measurement Assignment
 - Geometry Plane Figures Assignment #1
- **Independent Study, Short Courses (assigned by practitioner after assessment):**
 - Apprenticeship Math
- **Live Classes (SABA) – Geometry A (Part 2); Geometry B**

***To access LearningHUB courses**, learners must register for the LearningHUB e-Channel program by completing the registration form on their website and completing the course selection (page 2 of the registration form): https://www.learninghub.ca/get_registered.aspx

***To Access LearningHUB Course Catalogue:**

<http://www.learninghub.ca/Files/PDF-files/HUBcoursecatalogue,%20December%202023,%202014%20revision.pdf>