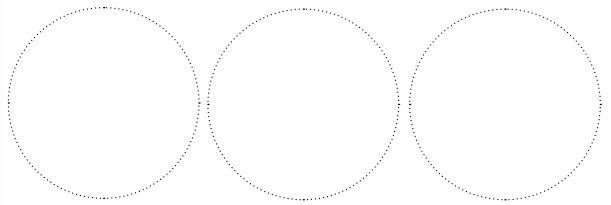
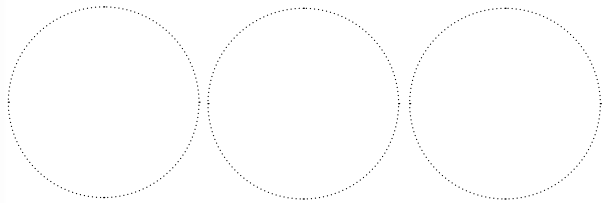


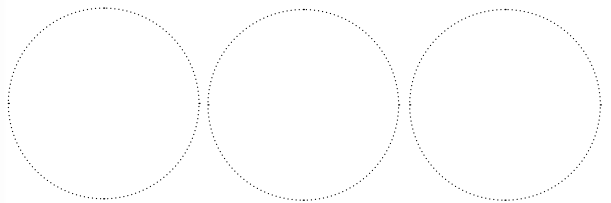
EAST BAY BIKE PATH



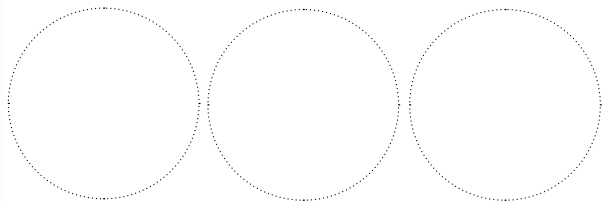
BLACKSTONE RIVER BIKEWAY



WEST BAY (WASHINGTON SECONDARY) BIKE PATH

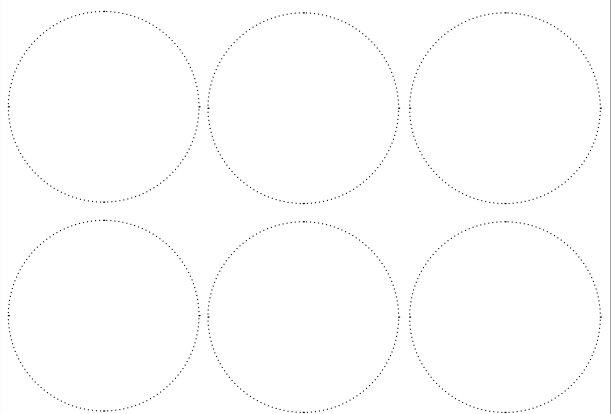


FRED LIPPITT WOONASQUATUCKET RIVER GREENWAY



BONUS LOCATIONS

check www.rhodypassport.com for bonus locations!



Rhody Passport

Rhode Island has many bike paths, trails, and greenways that are full of scenic beauty and possibilities for fun and exercise. This passport will help you explore them all!

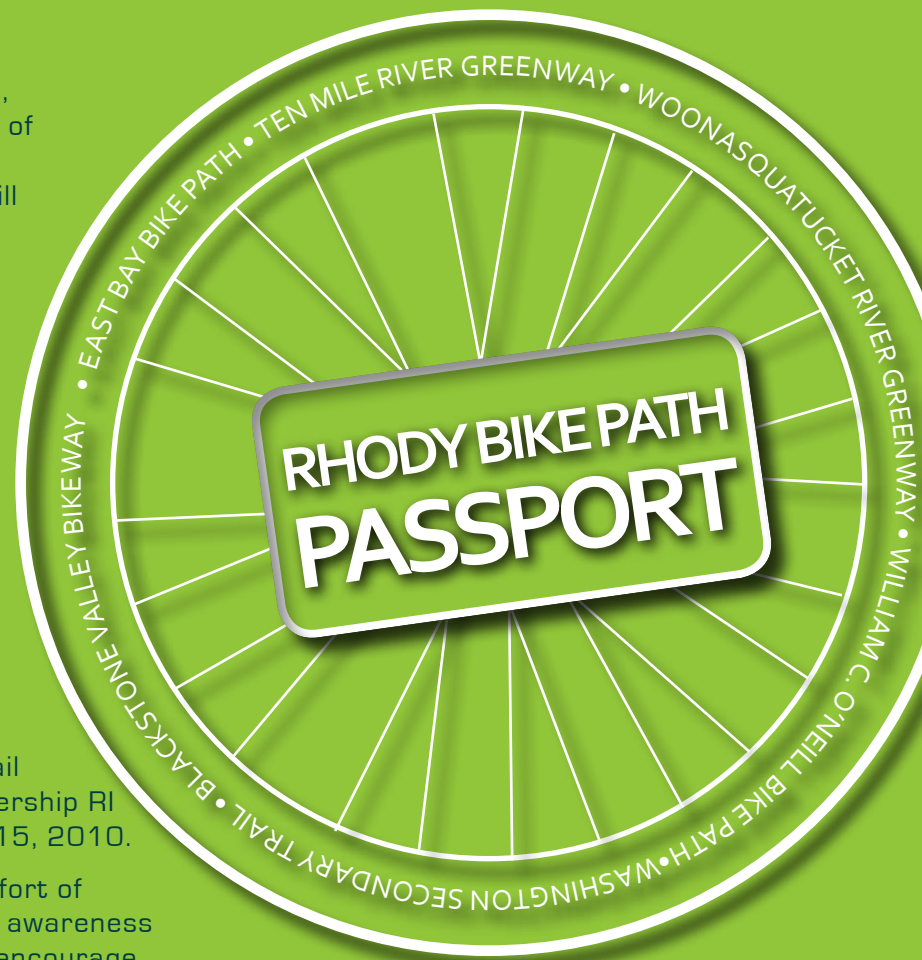
Collect stamps by having this passport stamped or signed in the spaces to the left at participating locations listed on the map on the opposite side.

Each path uses a stamp with a unique design - collect them all, and don't stop at just one!

Passports with stamps from at least three paths will be eligible to win prizes to be announced, including a grand prize worth at least \$250. To enter, fill in your contact information below and mail this passport (or a copy) to Leadership RI at the address below by October 15, 2010.

This program is a volunteer-led effort of Leadership RI designed to spread awareness of Rhode Island's natural beauty, encourage fitness, and promote local businesses.

Check www.rhodypassport.com for additional participating locations, links, and updates!



name

street

city *state* *zip*

phone *email*

for entry in grand prize drawing
send photocopy or original to:

BIKE PATH PASSPORT
c/o Leadership RI
1570 Westminister Street
Providence RI 02909

one entry per person, please!

sponsored by



printing by the Copy Center at Crossroads RI
a project of Leadership Rhode Island

GET YOUR PASSPORT STAMPED AT THESE LOCATIONS!

EAST BAY BIKE PATH

- a1** Bayside YMCA 70 West St., Barrington (401) 245-2444
- a2** The Daily Scoop-Barrington 230 County Rd., Barrington (401)245-0100
- a3** Barrington Books 184 County Rd., Barrington (401) 245-7925
- a4** The Fruity Cow 7 Turner Street, Warren (401) 289-2089
- a5** Your Bike Shop 51 Cole Street, Warren (401) 245-9755
- a6** The Daily Scoop-Bristol 446B Thames St. Bristol (401) 254-2223

BLACKSTONE RIVER BIKEWAY

- b1** Lincoln Creamery 276 Front Street, Lincoln (401) 724-1050
- b2** Blackstone Bicycles 179 Front Street, Lincoln (401) 335-3163
- b3** Blackstone Valley Outfitters 25 Carrington St, Lincoln (401) 312-0369

WASHINGTON SECONDARY (WEST BAY) BIKE PATH

- c1** Upscale Nails 284 Phenix Avenue, Cranston (401) 942-3930
- c2** YMCA of Cranston 1225 Park Avenue, Cranston (401) 943-0444
- c3** Skincare by Valerie at Cosi Bella Salon 1458 Park Ave, Cranston 270-7404
- c4** Sundaes Ice Cream 775 Oaklawn Ave, Cranston (401) 942-8150

FRED LIPPITT WOONASQUATUCKET RIVER GREENWAY

www.wrwc.org

- d1** Olneyville NY System Restaurant 20 Plainfield Pike, Prov. (401) 621-9500
- d2** Button Hole Golf & Learning Center 1 Buttonhole Dr., Prov. (401)421-1664

ALSO CHECK OUT THESE BIKE PATHS! (NO STAMPS)

e WILLIAM C. O'NEILL SOUTH COUNTY BIKE PATH
www.southcountybikepath.org

f TEN MILE RIVER GREENWAY

g QUONSET BIKE PATH

h WARREN BIKE PATH

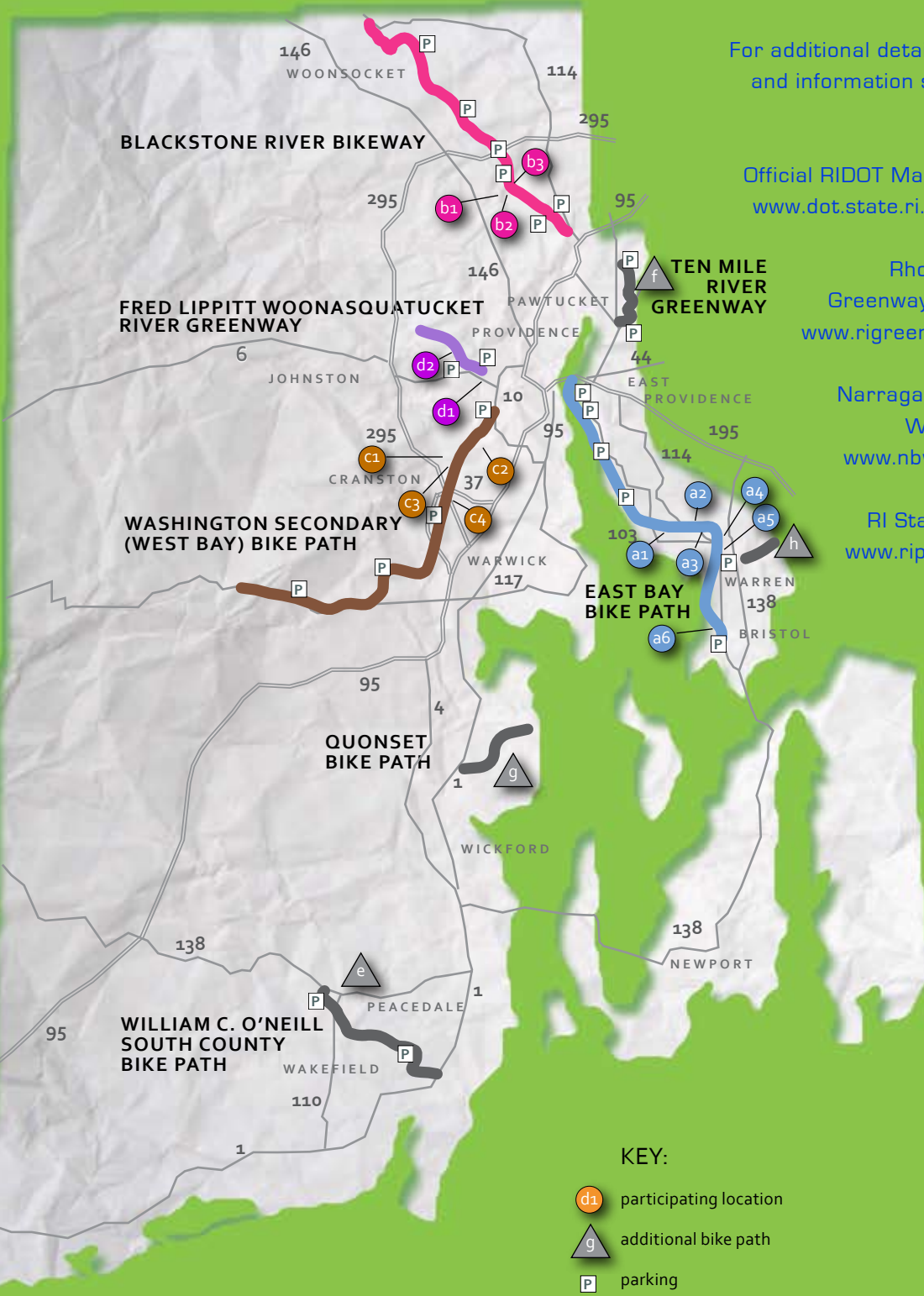
For additional detailed maps and information see these websites:

Official RIDOT Maps & Info:
www.dot.state.ri.us/bikeri

Rhode Island Greenway Alliance:
www.rigreenways.org

Narragansett Bay Wheelmen:
www.nbwclub.org

RI State Parks:
www.riparks.com



KEY:

- d1** participating location
- g** additional bike path
- P** parking