



Ariens Company
655 W. Ryan St.
Brillion, WI 54110
www.ariens.com

Service Letter

Product Family: AMP Rider and Sno-Thro Units

Subject: Battery Replacement Procedures

Dealer Action: Read and Understand New Procedure for Sourcing AMP Batteries

Models: 916002, 916003, 916301, 916302 and 916303 – all serial numbers.

Ariens Company is changing the procedure for sourcing batteries in the field for AMP Rider and AMP Snow-Thro models.

In the past, there were two part numbers for battery pack sets used on Amp products:

- 51600100 AMP Rider Battery Set – 5 Packs
- 51600300 AMP Sno-Thro Battery Set – 2 Packs

Going forward these Battery Sets will be replaced by two kits:

- 51600500 Battery Cover and Harness Kit for AMP Sno-Thro
- 51600600 Battery Cover and Harness Kit for AMP Rider

Each Battery Cover and Harness Kit consists of a cover, a harness and hardware to be used with locally sourced batteries as replacements in AMP products. One 51600500 Kit (Sno-Thro) or 51600600 Kit (Rider) and four locally sourced batteries will replace one pack used in the 51600100 or 51600300 Battery Sets. Attached to this Service Letter are the instruction sheets for these Kits.

To replace a 51600100 Battery Set on an AMP Rider, use five 51600600 Kits and 20 locally sourced batteries. To replace a 51600300 Battery Set on an AMP Sno-Thro, use two 51600500 Kits and 8 locally sourced batteries.

Attached is a specification sheet on the battery that must be locally sourced. The GP12120 is available from several manufacturers and all major distribution channels worldwide. It is important that only this battery be used in an AMP product. The attached battery specification sheet will be included with the instruction sheets for the 51600500 and 51600600 Kits.

AMP 916003 Sno-Thro units with serial number 75000 and above will already have the new style battery configuration as standard equipment.

Warranty Replacement Procedure

The batteries used on AMP products are covered by warranty for 100% of the first year and pro-rated the second year for consumer use. In the United States and Canada, if an AMP Battery Pack fails in the first year and will be replaced under the 100% warranty, dealers should contact Ariens Technical Service. Ariens will supply the appropriate Kits and Batteries through regular parts channels under part number 51600400. Except in this case of 100% warranty in the United States or Canada, dealer must source the batteries through local channels.

For warranty failure outside the United States and Canada, dealers should source the battery locally and file warranty claims listing the batteries as a Miscellaneous Item on the warranty claim form.

Instruction Sheet

Kit Number: 51600600

AMP RIDER BATTERY INSTALLATION KIT



WARNING: FAILURE TO FOLLOW INSTRUCTIONS could result in personal injury and/or damage to unit.
Read, understand, and follow all safety practices in Owner/Operator Manual before beginning.

Package Contents

Check contents of your kit for the parts listed (Figure 1):

Item	Part No.	Qty.	Description
1	04102900	4	Zip Ties
2	04502400	1	Battery Harness
3	04499500	1	Battery Cover

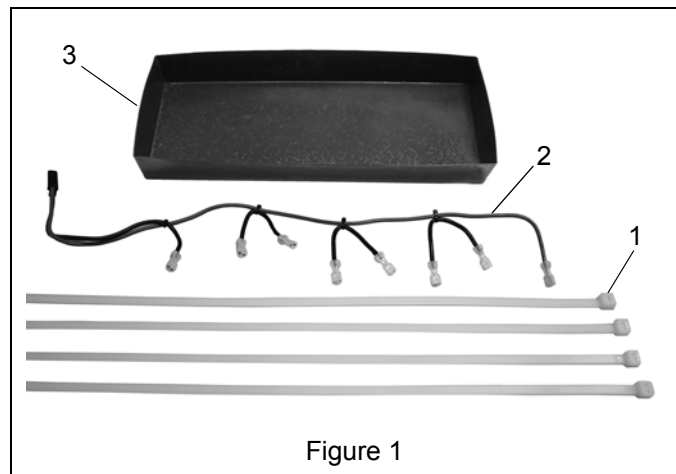


Figure 1

PRIOR TO ASSEMBLY

1. Locally source four batteries that meet or exceed the specifications shown in Figure 6.

IMPORTANT: For proper performance, batteries must meet or exceed the supplied specifications.

ASSEMBLY

1. Position batteries in line long edge-to-long edge. Ensure that battery leads all face in the same direction.
2. Place one zip tie (item 1) under each battery. Ensure that zip ties face in the same direction.
3. Connect battery harness (item 2) to batteries. See Figure 2.

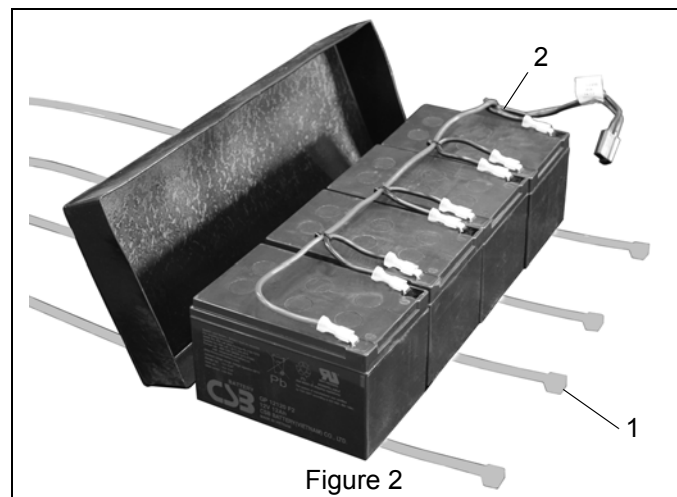


Figure 2

4. Place cover (item 3) over batteries. See Figure 3.
5. Secure zip ties at center of battery side (item 1).

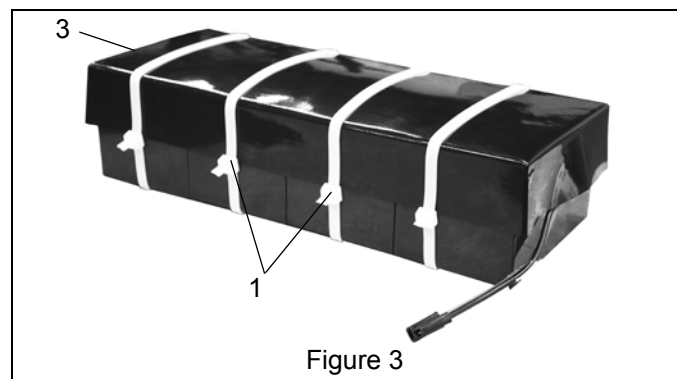
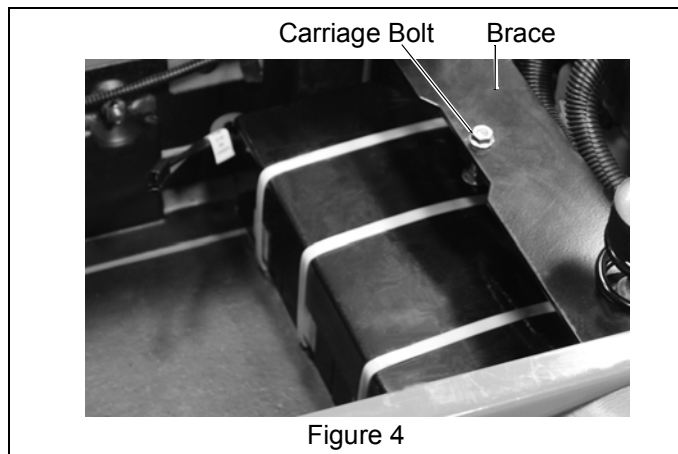


Figure 3

NOTE: Check batteries for possible orientation restrictions.

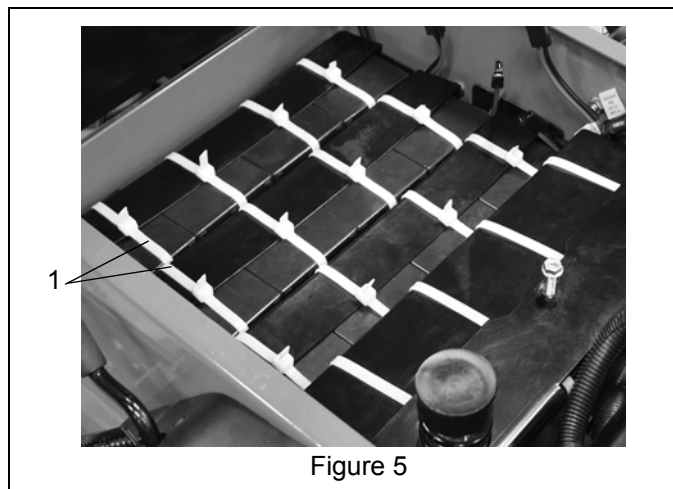
6. Install two battery packs at back of unit in the vertical position. See Figure 4.
7. Hold brace carriage bolt upwards prior to installing second battery pack.
8. Install three battery packs in the side position. See Figure 5.



9. For multiple battery setup, stagger zip ties (item 1) for a secure fit. See Figure 5.

NOTE: Once batteries are secure in mower, trim excess material on zip ties.

10. Reconnect main wire harness to battery packs.



Powered by



GP 12120

► 12V 12Ah

GP 12120 is a general purpose battery up to 5 years in standby service or more than 260 cycles at 100% discharge in cycle service. As with all CSB batteries, all are rechargeable, highly efficient, leak proof and maintenance free.



► Specification

Cells Per Unit	6
Voltage Per Unit	12
Capacity	12 Ah @ 20hr-rate to 1.75V per cell @25°C (77°F)
Weight	Approx. 3.67 kg(8.09 lbs)
Maximum Discharge Current	150A/180A(5sec)
Internal Resistance	Approx. 16 mΩ
Operating Temperature Range	Discharge: -15°C~50°C (5°F~122°F) Charge: -15°C~40°C (5°F~104°F) Storage: -15°C~40°C (5°F~104°F)
Nominal Operating Temperature Range	25°C±3C (77°F±5°F)
Float Charging Voltage	13.5 to 13.8 VDC/unit Average at 25°C (77°F)
Recommended Maximum Charging Current Limit	3.6A
Equalization and Cycle Service	14.4 to 15.0 VDC/unit Average at 25°C (77°F)
Self Discharge	CSB Batteries can be stored for more than 6 months at 25°C (77°F).Please charge batteries before using. For higher temperatures the time interval will be shorter.
Terminal	F1/F2-Faston Tab187/250
Container Material	ABS(UL 94-HB/File E50263)*Flammability resistance of (UL 94-V0/File E88637) can be available upon request.



MH14533(N)



ISO 9001
No :041005117



ISO 14001
NO.UM 1-12-0045

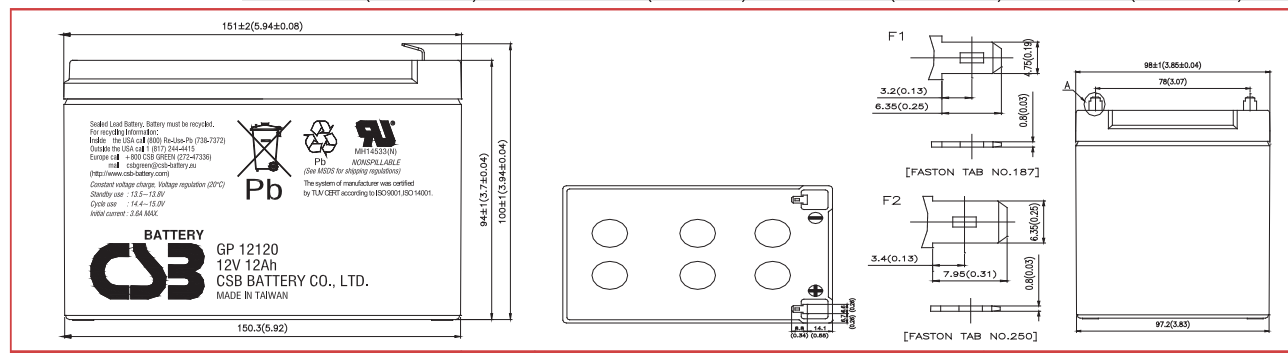
CSB-manufactured VRLA batteries are UL-recognized components under UL924 and UL1989.

CSB is also certified by ISO 9001 and ISO 14001.

► Dimensions :

Unit: mm (inch)

Overall Height (H)	Container height (h)	Length (L)	Width (W)
100±1 (3.94±0.04)	94±1 (3.7±0.04)	151±2 (5.94±0.08)	98±1 (3.85±0.04)



RA: 1111

Figure 6

Instruction Sheet

Kit Number: 51600500

AMP BATTERY INSTALLATION KIT

For use on Models:

916302, 916303, 916003



WARNING: FAILURE TO FOLLOW INSTRUCTIONS could result in personal injury and/or damage to unit.

Read, understand, and follow all safety practices in Owner/Operator Manual before beginning.

Package Contents

Check contents of your kit for the parts listed (Figure 1):

Item	Part No.	Qty.	Description
1	04102900	4	Zip Ties
2	04502400	1	Battery Harness
3	04499500	1	Battery Cover

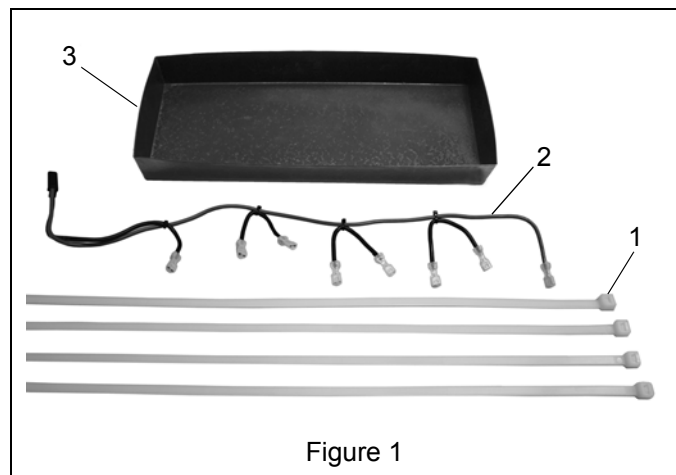


Figure 1

PRIOR TO ASSEMBLY

1. Locally source four batteries that meet or exceed the specifications shown in Figure 4.

IMPORTANT: For proper performance, batteries must meet or exceed the supplied specifications.

ASSEMBLY

1. Position batteries in line long edge-to-long edge. Ensure that battery leads all face in the same direction.
2. Place one zip tie (item 1) under each battery. Ensure that zip ties face in the same direction.
3. Connect battery harness (item 2) to battery. See Figure 2.

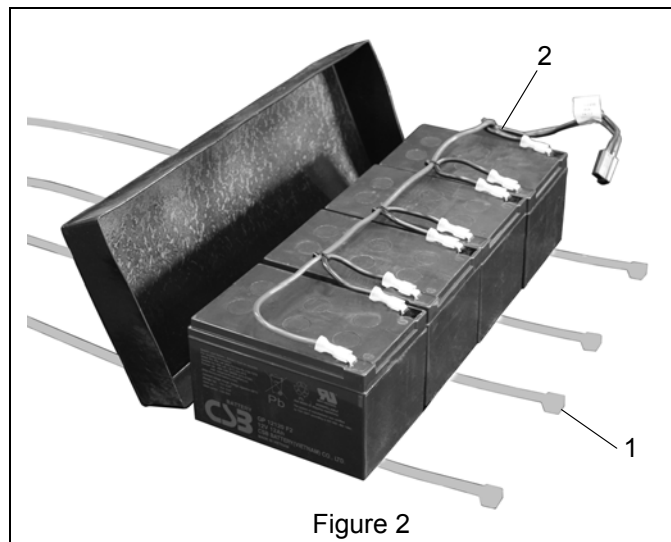


Figure 2

4. Place cover (item 3) over batteries. See Figure 3.
5. Secure two middle zip ties at center of batteries.
6. Secure two end zip ties 1 1/4" – 1 1/2" from edge of outside batteries.

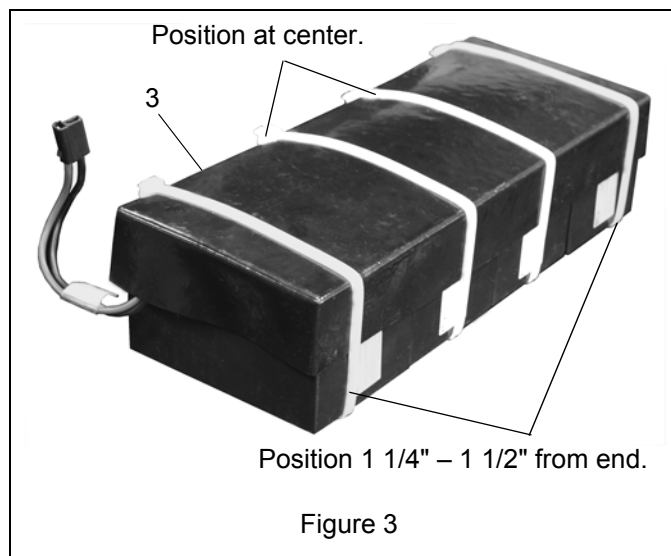


Figure 3

Powered by



GP 12120

► 12V 12Ah

GP 12120 is a general purpose battery up to 5 years in standby service or more than 260 cycles at 100% discharge in cycle service. As with all CSB batteries, all are rechargeable, highly efficient, leak proof and maintenance free.



► Specification

Cells Per Unit	6
Voltage Per Unit	12
Capacity	12 Ah @ 20hr-rate to 1.75V per cell @25°C (77°F)
Weight	Approx. 3.67 kg(8.09 lbs)
Maximum Discharge Current	150A/180A(5sec)
Internal Resistance	Approx. 16 mΩ
Operating Temperature Range	Discharge: -15°C~50°C (5°F~122°F) Charge: -15°C~40°C (5°F~104°F) Storage: -15°C~40°C (5°F~104°F)
Nominal Operating Temperature Range	25°C±3C (77°F±5°F)
Float Charging Voltage	13.5 to 13.8 VDC/unit Average at 25°C (77°F)
Recommended Maximum Charging Current Limit	3.6A
Equalization and Cycle Service	14.4 to 15.0 VDC/unit Average at 25°C (77°F)
Self Discharge	CSB Batteries can be stored for more than 6 months at 25°C (77°F).Please charge batteries before using. For higher temperatures the time interval will be shorter.
Terminal	F1/F2-Faston Tab187/250
Container Material	ABS(UL 94-HB/File E50263)*Flammability resistance of (UL 94-V0/File E88637) can be available upon request.



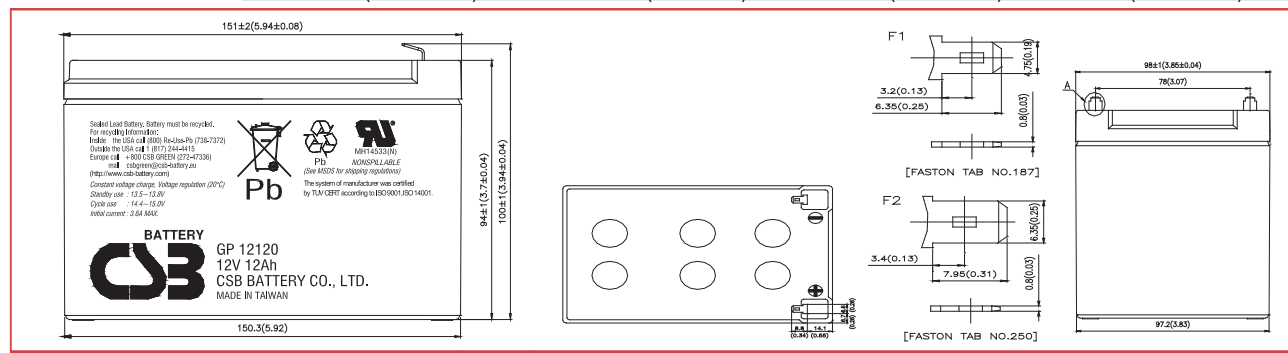
CSB-manufactured VRLA batteries are UL-recognized components under UL924 and UL1989.

CSB is also certified by ISO 9001 and ISO 14001.

► Dimensions :

Unit: mm (inch)

Overall Height (H)	Container height (h)	Length (L)	Width (W)
100±1 (3.94±0.04)	94±1 (3.7±0.04)	151±2 (5.94±0.08)	98±1 (3.85±0.04)



RA: 1111

Figure 4