

# THE FISH HAWK HERALD



Coeur d'Alene Chapter of the National Audubon Society  
[www.cdaudubon.org](http://www.cdaudubon.org)

November 2014

Volume 24 Number 3

## NOVEMBER PROGRAM

DATE: November 11, Tuesday

PLACE: Lutheran Church of the Master,  
4800 N. Ramsey, CDA

TIME: 7:00 p.m.

SPEAKER: Sanford Eigenbrode, a  
Professor at Washington State  
University

PROGRAM: *Effects Of Climate Change  
On Shrub-Steppe And Grassland*

*Ecosystems On The Palouse Prairie:*

Subjects Covered: species composition,  
distribution and community dynamics,  
ecosystem productivity, disturbance  
regimes

ground and you have your choice of extra fine, fine, medium and course grinds. Two pound bags are also available for \$25 for regular and \$27 for decaf.

The five varieties available are:

**Scarlet Tanager** - French Roast (described as intense flavor with smoky aromatica undertones)

**Chestnut-Sided Warbler** - Medium roast (a complex blend with a subtle nutty flavor)

**American Redstart** - Light roast (smooth and balanced)

**Wood Thrush** - Breakfast roast (delicate, complex full flavored)

**Baltimore Oriole** - French roast decaf (water process decaffeination)

## Birds and Beans

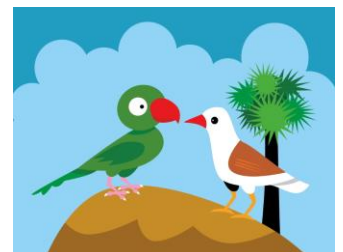
George Saylor



Once again, the Coeur d'Alene Audubon Society is selling Birds and Beans shade grown, organic, fair-trade certified coffee. We do it as a fundraiser and to help protect bird habitat in Central America. Twelve oz. bags are \$10.50 for regular and 11.50 for decaf. It can be either whole bean or

### Birds and Beans

is the only coffee brand in the U.S. that buys and roasts only independently



certified Smithsonian Migratory Bird Friendly certified coffee beans. They are **committed to habitat protection** and public education about birds, as well as supporting small family farms and co-ops that grow shade grown coffee. An added bonus is their coffee is very good! *Continued on page 2*

## Birds and Beans

*Continued from page 1*

If you would like to order, please e-mail George Saylor at [gsaylercda@aol.com](mailto:gsaylercda@aol.com). Please specify what variety or varieties you would like, ground or whole bean, what grind, and what size bags. Payment can be made upon receipt of the coffee. We will be selling the coffee throughout the coming Audubon season, i.e., through May. We hope you will enjoy your coffee and the knowledge that you are helping protect birds and their habitat.

### October 4 Litter Pick-up



Coffee, donuts, sweets galore  
 Made the task a friendly chore;  
 Fifteen people were directed and  
 My the refuse they collected.  
 Twenty five bags as I recall  
 Before the sun was very tall.  
 Greater feats have been done  
 But not amidst so much fun!

*Mike and Valerie Zagar*

## Raffle and Yard Sale

Lynn Sheridan

I wish extend a thank you to those who donated items for the raffle at our October meeting and to those who bought tickets. The raffle brought in \$35. Our next raffle will be held at the December meeting. Donations to the December raffle would be appreciated.

A yard sale is being planned for next spring. Hang on to those items you are ready to get rid of as we need items for the sale. I would appreciate help in getting it organized. If you are willing to help, please contact me.

*Thanks, Lynn*

### Heyburn State Park

October 11, 2014

Lisa Hardy

The weather cooperated - mostly - as we explored the park. The park website showed a trail paralleling the shoreline of Hidden Lake, but the printed trail maps did not show it. At the visitor's center, we were told that the trail is not an "official" one. We located and hiked the trail anyway, starting from the west end of the Chatcolet bridge. On the brushy slope above the trail we encountered a mixed flock containing Red-breasted and White-breasted Nuthatches, the trifecta of chickadees, and a late Wilson's Warbler.

*Continued on page 3*

## Heyburn State Park

*Continued from page 1*



Canada Geese  
photograph by Wayne Tree

Viewed from the Chatcolet Bridge, Coeur d'Alene Lake hosted several hundred Canada Geese, and 5 Common Loons well into basic plumage. It was opening day of duck hunting season, and after hearing several shotgun blasts, Valerie remarked that we would need to reduce the goose tally somewhat. Next we ventured to Rocky Point where we saw a flock of thousands of American Wigeon pour in to Chatcolet Lake from Round Lake where they had been disturbed by waterfowl hunters.

We birded by car down to Benewah Lake, noting more grebes, herons and Wood Ducks. At Willow Point day use area, we were finally overtaken by a thunderstorm and subsequent downpour, so we called it a day at mid-afternoon.

Trip participants: Roland Craft, Lisa Hardy, Jenny Taylor, Valerie Zagar



Western Bluebird  
photographed by Peggy  
Albertson on the Hoo  
Doo Trail

## Bluebird Trails Report

Shirley Sturts

I have completed entering the nest data we have collected from our three bluebird trails into the Cornell Laboratory

of Ornithology's Nest Watch program. See: <http://nestwatch.org>

Here are the results of this year's effort:

### Western Bluebird:

Hoo Doo - 16 attempts with 13 having at least 1 young that had fledged - 79 eggs produced 76 nestlings of which 55 fledged - a 81.25 % rate of success.

Mica Bay - 2 attempts with 1 having at least 1 young that fledged - 12 eggs which produced 6 nestling of which all 6 fledged - a 50% success rate.

Mica Flats - 3 attempts with 2 having at least 1 young that fledged - 19 eggs produced 13 nestlings of which 10 fledged - a 66.67% success rate.

### Tree Swallow:

Hoo Doo - 42 attempts with 21 having at least 1 young that fledged - 209 eggs produced 114 nestlings of which 83 fledged - a 50% success rate.

Continued on page 4

## Bluebird Trails Report

*Continued from page 3*

Mica Bay - 7 attempts with 4 having at least 1 young that fledged - 35 eggs produced 20 nestlings of which 13 fledged - a 57.14% success rate.

Mica Flats - 10 attempts with 6 having at least 1 young that fledged - 55 eggs produced 43 nestlings of which 27 fledged - a 60% success rate.

### House Wren:

Hoo Doo: 1 nest fledged at least 4 young - As usual we could not see into the nest to count eggs or nestling but one team was lucky enough to be there when they were fledging from the nest.

I have been entering data since from 2000 - 2014. I have created a table showing the results of all three trails for comparison.

You can view this table on our Project section of our Webpage.

I want to thank this year's bluebird team for checking and recording the nest boxes.

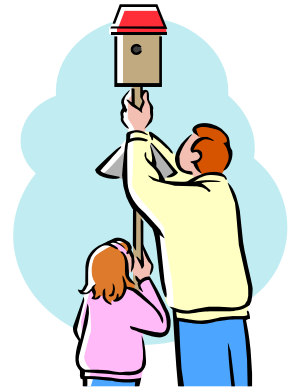
Team Members this year were: Peggy Albertson, Kris Buchler, Darlene Carlton, Linda Chalcraft, Angie Conrow, Roland Craft, Carrie Hugo, Rob and Nancy Kroese, Cathy Moen, Shirley Sturts, Vera Taggart, Linda Wolovich. A special thanks to Roland, Rob and Nancy who not only took turns doing Hoo Doo but took charge of doing Mica Bay and Mica Flats.

## Feeder Watch

Starts November 8<sup>th</sup>

### What is FeederWatch?

Project FeederWatch is a winter-long survey of birds that visit feeders at backyards, nature centers, community areas, and other locales in North America. FeederWatchers periodically count the birds they see at their feeders from November through early April and send their counts to Project FeederWatch. FeederWatch data help scientists track broadscale movements of winter bird populations and long-term trends in bird distribution and abundance.



Anyone interested in birds can participate. FeederWatch is conducted by people of all skill levels and backgrounds, including children, families, individuals, classrooms, retired persons, youth groups, nature centers, and bird clubs. Participants watch their feeders as much or as little as they want over two consecutive days as often as every week (less often is fine). They count birds that appear in their count site because of something that they provided (plantings, food, or water).

Project FeederWatch is operated by the Cornell Lab of Ornithology and Bird Studies Canada. Read more at:

<http://feederwatch.org/>

## FIELD TRIPS 2014



Watch the website or newsletter for updates to our field trip schedule.

Additional field trips will be added if we have someone to lead them

Please contact our field trip coordinators Janet Callen 664-1085 and Roland Craft 457-8894 to suggest or volunteer to lead a trip.

Participants should contact the trip leader at least 24 hours in advance of the field trip to find out if the meeting place/time or destination has been changed. Participants will share in a mileage reimbursement for the driver

**Mineral Ridge Hike: Fernan Lake, Wolf Lodge, Beauty Bay and Blue Creek Bay**

**Date:** November 8, Saturday

**Time:** 9:00 a.m.

**Meet:** Fernan Ranger Station

**Leader:** Janet Callen 664-1085

This will be a three-quarter day trip. Bring a lunch, or snacks and water. Dress for the weather. We'll hike Mineral Ridge and search for waterfowl on the lake. Target birds will include Loons.

### . Mica Bay Survey

**Date:** November 11, Tuesday (held 2nd Tuesday of each month - times vary depending on month)

**Time:** 9:00 a.m. (Note time change)

**Meet:** Fairmont Loop and Highway 95

**Leader:** Shirley Sturts 664-5318 and Janet Callen 664-1085

**Activity:** We spend about 3 hours once a month counting birds at Mica Bay. Beginner birders are welcome. We will help you with identification skills.

### Raptor Surveys

**Dates:** (Tentative) November 15, December 13, January 17, February 14, March 14 (all Saturdays)

**Leader:** Doug Ward 762-7107

Because of traffic, we limit this outing to one car. If interested, register ahead of time with Doug. We drive a set route across the Rathdrum Prairie and record hawk species and numbers. This is a regional survey being coordinated by the East Cascades Audubon Society. Please join in the survey and help spot hawks. Beginners are welcome. This is an excellent way to learn hawk identification. The survey takes around 2-3 hours. Bring water and snacks if you wish. .

### Christmas Counts

Coeur d'Alene - December 14<sup>th</sup>

Spirit Lake and Indian Mountain. January 3<sup>rd</sup> and 5<sup>th</sup>

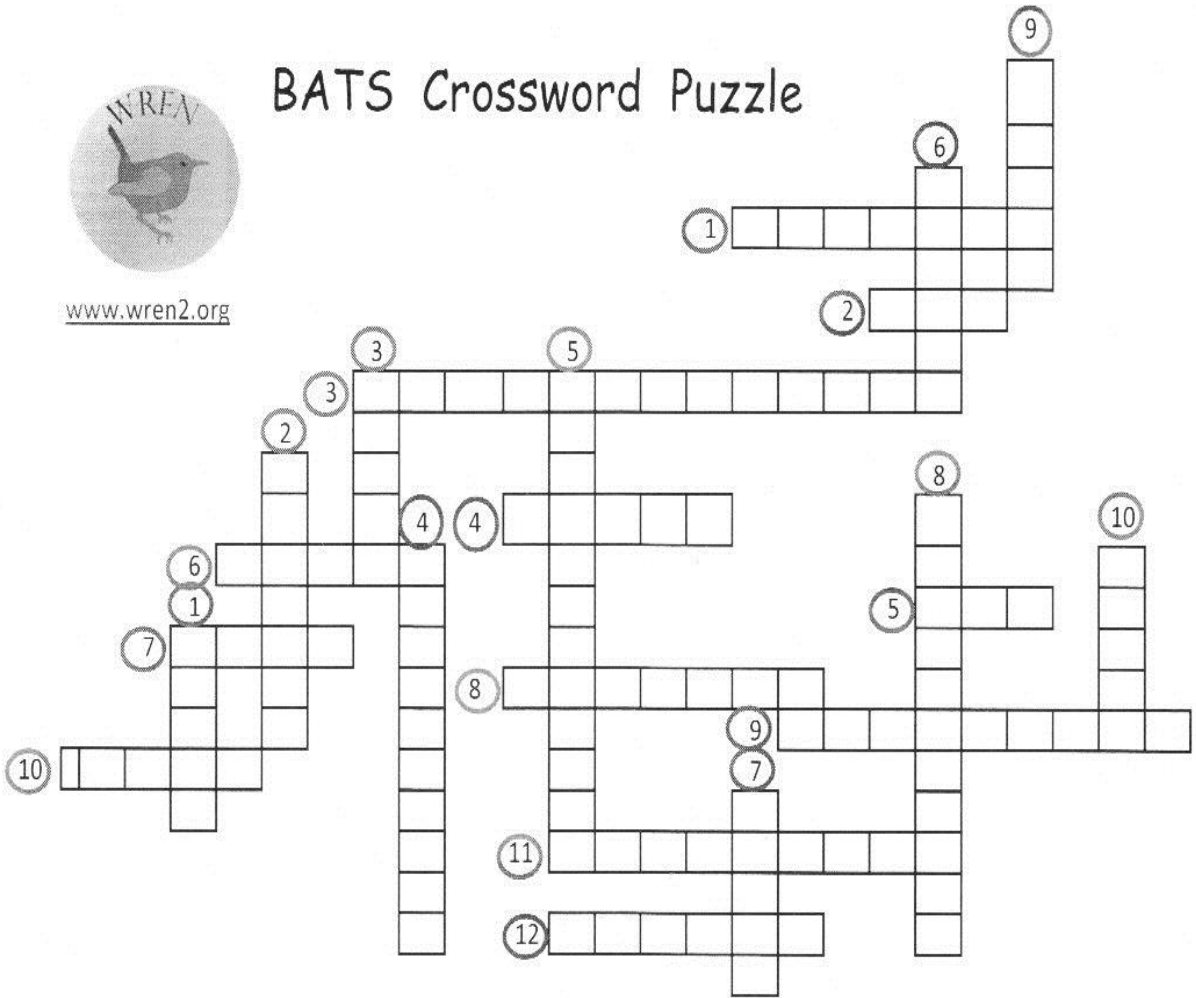
Look for further information in our December newsletter

Click puzzle for print out version of the [puzzle](#)



[www.wren2.org](http://www.wren2.org)

# BATS Crossword Puzzle



This puzzle was designed by Jenny Taylor, WREN Wildlife Biologist  
LIKE US and COMMENT ON Facebook - <https://www.facebook.com/wrencda.org>

## BATS Crossword Puzzle Clues (print version)

www.wren2.org

### ACROSS

- 1 Like many birds, some bats \_\_\_\_\_ south for the winter.
- 2 Bats are the only mammals that \_\_\_\_\_.
- 3 The hoary bat and the \_\_\_\_\_ bat migrate south for winter.
- 4 The largest bat in the U.S. is the \_\_\_\_\_ bat. A big one weighs 34 grams or 1.2 ounces.
- 5 A baby bat is called a \_\_\_\_\_.
- 6 BATS Crossword Puzzle Clues
- 7 25% of all mammals in the world are \_\_\_\_\_.
- 8 Bats have hair and produce milk to feed their young, so they are \_\_\_\_\_.
- 9 A female bat's \_\_\_\_\_ period varies depending on the temperature of its environment.  
She is pregnant longer if her roost is cold.
- 10 In this country bats are a symbol of happiness and good luck: \_\_\_\_\_
- 11 Bats are \_\_\_\_\_ because they are active at night.
- 12 Mango, avocado, agave and \_\_\_\_\_ are fruits that depend on bats to pollinate their flowers.

### DOWN

- 1 Bats have excellent vision. They are not \_\_\_\_\_.
- 2 The bat that lives in Idaho's deserts and is black with 3 big polka dots and long pink ears is the \_\_\_\_\_ bat.
- 3 Many tropical bats eat fruits and drop their \_\_\_\_\_ somewhere else. These grow into new plants.
- 4 The Idaho bat with the longest ears is \_\_\_\_\_ big-eared bat. It eats moths and wasps.
- 5 Bats use their very good vision and \_\_\_\_\_ to find their prey (animals they eat).
- 6 The blond colored bat that eats scorpions and grasshoppers in Idaho's deserts is the \_\_\_\_\_ bat.
- 7 Bat droppings are called \_\_\_\_\_.
- 8 The only Idaho bat which usually has twins is the western \_\_\_\_\_.
- 9 \_\_\_\_\_ are holes dug in the ground to get gold and silver.  
They are good year-round roosts for bats.
- 10 Bats spread the seeds of the \_\_\_\_\_ tree. Chocolate is made from its fruit.

c This puzzle was designed by Jenny Taylor, WREN Wildlife Biologist.

LIKE US and COMMENT on Facebook - <https://www.facebook.com/wrencda.org>

**NEW MEMBER APPLICATION**

Become a member of the National Audubon Society, Join online at [www.audubon.org](http://www.audubon.org) or use this form.

**INTRODUCTORY MEMBERSHIP**

- Regular \$20.00
- Two Years \$30.00
- Seniors and Students \$15.00

NAME \_\_\_\_\_

ADDRESS \_\_\_\_\_

CITY \_\_\_\_\_

STATE \_\_\_\_\_ Zip \_\_\_\_\_

Send this application and your check payable to:

NATIONAL AUDUBON SOCIETY  
Membership Data Center  
P.O. Box 422248  
Palm Coast, Florida\ 32142-6718

**C9ZG060Z**

**CDA Audubon Chapter Officers**

President:  
Eula Hickam 661-3228  
Vice President:  
Open  
Recording Secretary:  
Valerie Zagar 819-5115  
Treasurer:  
Jenny Taylor 755-4216  
Board Members: all officers +  
Peggy Albertson, Midge-Marcy  
Brennan, Darlene Carlton, Carrie  
Hugo, Rob Kroese, George  
Saylor, Lynn Sheridan

**COMMITTEE CHAIRS**

Publicity: open  
Field Trips: Roland Craft 457- 8894  
Janet Callen 664-1085  
Education: Valerie Zagar 819-5115  
Conservation: open  
Membership: Peggy Albertson 664-1616  
  
Hospitality: open  
Newsletter: Shirley Sturts 664-5318  
Mailing: Peggy Albertson 664-1616  
Webmaster: Shirley Sturts 664-5318  
Historian: open

**LOCAL MEMBERSHIP DUES**

- Individual \$10.00
- Family \$15.00
- Individual \$25.00 - with hard copy of the newsletter
- Family \$30.00 - with hard copy of the newsletter
- Additional donation \_\_\_\_\_

Total \$ \_\_\_\_\_

NAME \_\_\_\_\_

EMAIL \_\_\_\_\_

ADDRESS \_\_\_\_\_

CITY \_\_\_\_\_

STATE \_\_\_\_\_ ZIP \_\_\_\_\_

TELEPHONE \_\_\_\_\_

Mail this form and your check payable to: *Coeur d'Alene Audubon Chapter c/o Membership*  
P.O. Box 361  
Coeur d'Alene, ID 83816

National Audubon Coeur d'Alene Chapter  
P.O. Box 361  
Coeur d'Alene, ID 83816

