



# **Point of Sale Communications Software**

**Version 2.0  
DenView500 Manual**

## **PC/POLL SYSTEMS**

3162 Cedar Crest Ridge, Dubuque IA 52003  
TEL: 563-556-3556 FAX: 563-556-0405  
Email: [sales@technology4retailers.com](mailto:sales@technology4retailers.com)  
Internet: [www.technology4retailers.com](http://www.technology4retailers.com)



# Table of Contents

Updated 2/17/15

<b>TRI-TECHNICAL SYSTEMS, INC. RETURN POLICY</b> .....	4
<b>Term</b> .....	5
<b>Limitation of Liability</b> .....	5
<b>Software License</b> .....	6
<b>Software Warranty</b> .....	6
<b>Receiving Technical Support</b> .....	7
<i>Crucial Information</i> .....	7
<b>Recommended System Additions</b> .....	8
<i>System Requirements</i> .....	8
<i>System Recommendations</i> .....	8
<b>Introduction</b> .....	9
Overview .....	9
Installation Instructions .....	10
Release Code Screen .....	13
Quick Setup .....	14
Quick Maintenance .....	15
<b>Terminology</b> .....	16
File Menu .....	16
Sales Data Menu .....	17
Setup Menu .....	18
Master Options Menu .....	19
Help Menu .....	20
Master Items Tab.....	21
Item Usage Report.....	24
Item Stock Tab.....	26
Sample Screens .....	28
Toolbars.....	29
<b>Transferring Data from Polling</b> .....	33
Version 6 Items.....	33
Version 6 Reports .....	38
Version 7 Items.....	41
Version 7 Reports .....	45
<b>Index</b> .....	49

# **TRI-TECHNICAL SYSTEMS, INC. RETURN POLICY**

## **NO RETURNS OR REFUNDS ON SOFTWARE PURCHASES**

Due to current technology capabilities, all dealers and prospective customers are encouraged to request a one (1) week demo code to preview the polling software, thus allowing users to make an informed decision before purchasing. After an order has been processed, customers (end-users) should contact their dealer/reseller if a return or refund is requested. All such request must go through the distributing agent. A cancellation code may be required by the dealer. Please give that information to the dealer prior to removing the software from the PC.

On products produced from vendors other than TRI-TECHNICAL SYSTEMS, INC., the manufacturer's warranties apply. TRI-TECHNICAL SYSTEMS, INC. does not give or imply that it gives any warranty on any product(s) it distributes, including modems and cables. TRI-TECHNICAL SYSTEMS, INC. will provide assistance, on a best-effort basis only, to customers needing warranty assistance in dealings with the manufacturer(s) of the product(s) TRI-TECHNICAL SYSTEMS, INC. distributes.

## Term

This license is effective until terminated. You may terminate it at any time by destroying the program together with all copies, modifications, and merged portions in any form. It will also terminate upon conditions set forth elsewhere in this Agreement or if you fail to comply with any term or condition of this Agreement. You agree upon such termination to destroy the program together with all copies, modifications, and merged portions in any form

## Limitation of Liability

- A) EXCEPT AS OTHERWISE EXPRESSLY PROVIDED HEREIN, TRI-TECHNICAL SYSTEMS, INC. MAKES NO WARRANTIES, EITHER EXPRESSED OR IMPLIED, AS TO ANY MATTER WHATSOEVER, INCLUDING BUT NOT LIMITED TO: IMPLIED WARRANTIES, MERCHANTABILITY, OR FITNESS FOR A PARTICULAR PURPOSE.
- B) Except as otherwise provided herein, TRI-TECHNICAL SYSTEMS, INC. shall not be liable for any claims, damages, or expenses of any kind, whether made or suffered by the Buyer or any other person, unless such claims, damages, or expenses are directly caused by TRI-TECHNICAL SYSTEMS, INC. negligence or willful misconduct.
- C) The parties agree that in the event any liability is imposed on TRI-TECHNICAL SYSTEMS, INC. arising out of or in connection with the purchase or sales of TRI-TECHNICAL SYSTEMS, INC.'s products, it shall be impractical or extremely difficult to fix actual damages and, therefore, agrees that the aggregate amounts payable by TRI-TECHNICAL SYSTEMS, INC. by reason thereof shall not exceed the amount paid to TRI-TECHNICAL SYSTEMS, INC. by the Buyer for the product with respect to which such liability is imposed. TRI-TECHNICAL SYSTEMS, INC. shall not be liable for delays.
- D) TRI-TECHNICAL SYSTEMS, INC. shall in no event be liable to the Buyer or any other party for lost profits, diminution of good will, any other incidental, or consequential damages or loss of use, or other commercial loss, however occasioned.

## Software License

TRI-TECHNICAL SYSTEMS, INC. provides this program and licenses its use. You may:

- A) Use the program on a single PC.
- B) Copy the program into any machine readable or printed form for backup or modification purposes in support of your use of the program on a single PC. (Certain programs, however, may include mechanisms to limit or inhibit copying. They are marked "copy protected".)

YOU MAY NOT USE, MODIFY, OR TRANSFER THE PROGRAM OR ANY COPY, MODIFICATION, OR MERGED PORTION, IN WHOLE OR IN PART, EXCEPT AS EXPRESSLY PROVIDED FOR IN THIS LICENSE.

IF YOU TRANSFER POSSESSION OF ANY COPY, MODIFICATION, OR MERGED PORTION OF THE PROGRAM TO ANOTHER PARTY, YOUR LICENSE IS AUTOMATICALLY TERMINATED.

## Software Warranty

TRI-TECHNICAL SYSTEMS, INC. warrants any article or component supplied but not developed and produced by TRI-TECHNICAL SYSTEMS, INC. to the extent warranted to TRI-TECHNICAL SYSTEMS, INC. by the manufacturer of such article or component and only to such extent. TRI-TECHNICAL SYSTEMS, INC. warrants that, for a period of thirty (30) days from the date of delivery thereof, any software developed and produced by TRI-TECHNICAL SYSTEMS, INC. shall be free from defects in materials and workmanship, provided, however that TRI-TECHNICAL SYSTEMS, INC.'s obligation shall be limited to repair or replacement of any such software which is returned to TRI-TECHNICAL SYSTEMS, INC. and shown to TRI-TECHNICAL SYSTEMS, INC.'s satisfaction to be defective. TRI-TECHNICAL SYSTEMS, INC.'s repair or replacement of defective software shall be performed during TRI-TECHNICAL SYSTEMS, INC.'s normal working hours. This warranty does not apply to any software that has been subject to misuse (including failure to follow corrective routines or instructions), negligence, or accident by other causes not arising from the fault or negligence of TRI-TECHNICAL SYSTEMS, INC.

# Receiving Technical Support

First, check the manual that came with your software. When using Windows versions of TRI-TECHNICAL SYSTEMS, INC., click the Help button that appears on the main menu.

Call the cash register dealer who sold the cash register and TRI-TECHNICAL SYSTEMS, INC. software for answers.

If your dealer cannot help you, support is available in the other forms listed below:

- Please visit our website: [www.technology4retailers.com](http://www.technology4retailers.com). The site contains setup documentation as well as instructional tutorials on some of the products.
- Send email to TRI-TECHNICAL SYSTEMS, INC. at [sales@technology4retailers.com](mailto:sales@technology4retailers.com). Briefly describe your problem. Include your name, company information, telephone number, email address, etc. We will either try to put you in contact with a dealer in your area or we do have end-user support options that could be contracted directly through TRI-TECHNICAL SYSTEMS, INC.
- Call 563-556-3556 and ask to speak with a sales representative. We will either try to put you in contact with a dealer in your area or we do have end-user support options that could be contracted directly through TRI-TECHNICAL SYSTEMS, INC.

## Crucial Information

The following information is very important during the analysis of any problem:

1. The **version and serial numbers** of our software are located on the computer screen when the program is running or within the Activation I Release Code section of the software.
2. The **EPROM version** of the register and the date it was issued, plus the **make and model** of the cash register.
3. Include the exact wording of the error message.
4. What program you are using: Polling, Inventory, QuickBooks Interface, or DenView. Also, know what were you doing at the time the problem occurred and record this information.
5. Include computer type, system version, and amount of available memory. Also, have the Network configuration if applicable.
6. Include the printer manufacturer, type, and model.
7. Modem manufacturer, type, and model.

It is often helpful to record answers to your support questions in the software manual in case the same problem is encountered in the future.

**SPECIAL NOTE: DEALER SUPPORT AND TRAINING SESSIONS ARE OFFERED OVER THE PHONE. DEALERS AND/OR DEALERS AND USERS CAN ALSO COME TO TRI-TECHNICAL SYSTEMS, INC. IN DUBUQUE, IA FOR PERSONAL TRAINING ON ALL OF TRI-TECHNICAL SYSTEMS, INC.'S PRODUCTS. PLEASE CALL FOR PRICING AS FEES MAY APPLY.**

# Recommended System Additions

## System Requirements

- A PC capable of running a Window's Operating System (*Note: It is recommended that users run Windows 2000 or above. Some of the software applications will not run on Win98 due to limitations on that operating system.*)
- Windows Printer Installed
- Minimum 256 colors
- Minimum 800 x 600 resolution (*Note: Some Version 7 screens require 1024 x 768.*)
- 512 MB of RAM
- 1 GHz processor speed
- Serial port or modem (if interfacing to V6 Polling) USB to serial and ether to serial devices may be used. Some registers also support native TCP/IP communications. Please consult your cash register dealer for polling options.

## System Recommendations

It is recommended to use WinXP+ for the operating system. Users of Vista or Windows7 may need to install the software with compatibility mode or administrative rights. Users of 64 bit operating systems will need complete additional setup steps to run a 32 bit application on a 64 bit OS. 64-bit users may also need to verify that their hardware devices have drivers for a 64 bit OS. Please contact the vendor of the device for 64-bit drivers.

- Pentium 4 - 1 GHz or equivalent processor
- 20 GB hard drive
- 1 GB+ of RAM
- 1024 x 768 Resolution
- 16 million colors video display
- Backup medium (ex: zip drive, CD-ROM drive, 3.5 inch floppy drive)
- An Internet connection, static IP address, and a router may be required for WAN (wide area network) polling communications

## Backup System

For safety's sake, a system must be used to backup critical business data. V7 Archive Agent can be used to create compressed data backup files. It is highly recommended that users either manually or through the software, transfer these archives to an external location such as a network drive, zip drive, or another computer location. Backups must be done on a regular basis to be effective. Multiple copies of the backup should be made and kept in separate locations in case of fire. For more information, contact your network administrator.



# Introduction

## Overview

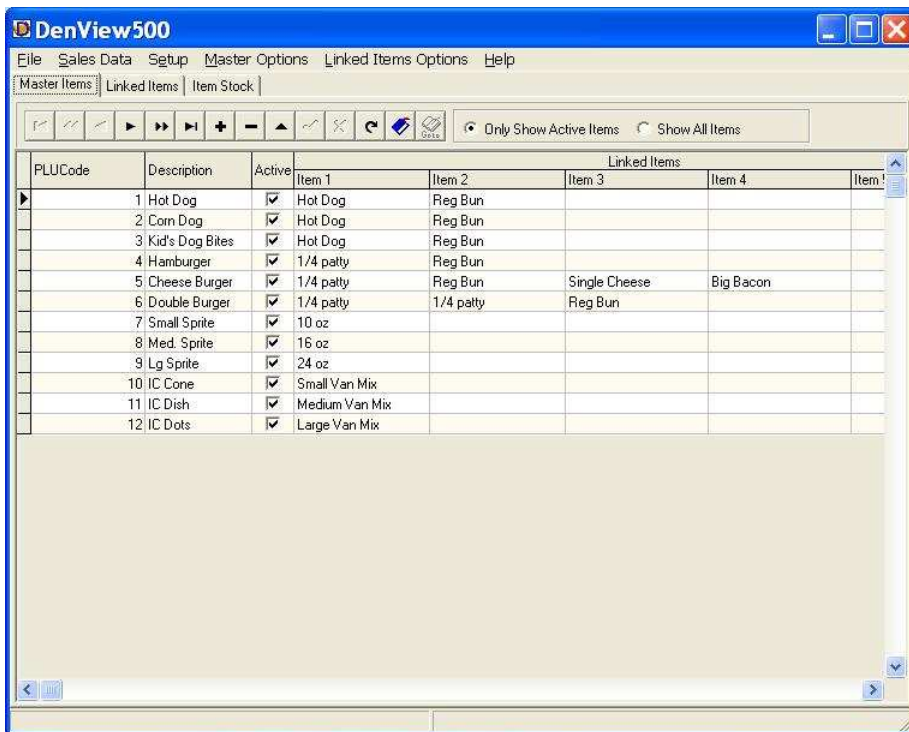
DenView500 is a simple, easy-to-use program that allows storeowners to manage their businesses at a fraction of the cost of a high-end inventory module. DenView500 helps bridge the gap between Polling and a full-blown inventory system. DenView500 allows users to take previously collected Version 6 and Version 7 PLU reports and calculate the usage on assembled items.

This software will allow the user to create a Master Items list of all their PLU items and link up to 5 component items to each of these Master items. The component items are then attached to Raw Purchasing Units. The reports generated reflect the total usage of the Raw Purchasing Units.

DenView500 can be applied to many different types of stores including restaurants and bars.

For example, an item on a PLU report may be 75 Ultimate Burgers. With DenView500 a user can link this PLU item to the following components: 1 lb burger patty, 1 bun, and 2 slices of cheese. Then these component items could be linked to the Raw Purchasing Units of: a 50 lb package of hamburger, a case of buns and a carton of cheese. The report created by DenView500 would show that the store used 1.5 - 50 lb packages of hamburger, 3/4 of a case of buns and 1 carton of cheese.

First time users, please read the [System Requirements](#).



The screenshot shows the DenView500 software interface. The title bar reads "DenView500". The menu bar includes "File", "Sales Data", "Setup", "Master Options", "Linked Items Options", and "Help". Below the menu bar, there are tabs for "Master Items", "Linked Items", and "Item Stock". A toolbar contains various navigation and editing icons, along with radio buttons for "Only Show Active Items" (selected) and "Show All Items".

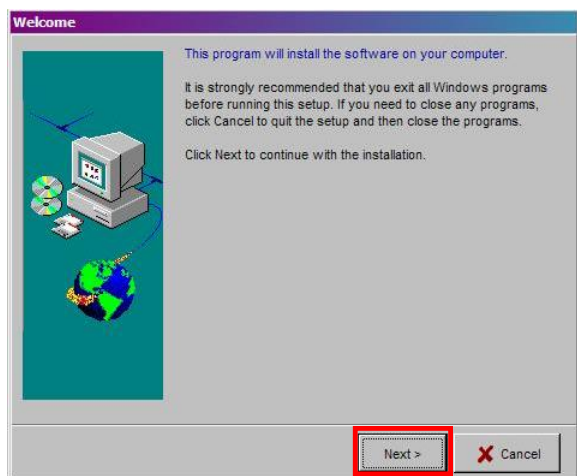
PLUCode	Description	Active	Linked Items					
			Item 1	Item 2	Item 3	Item 4	Item 5	
1	Hot Dog	<input checked="" type="checkbox"/>	Hot Dog	Reg Bun				
2	Corn Dog	<input checked="" type="checkbox"/>	Hot Dog	Reg Bun				
3	Kid's Dog Bites	<input checked="" type="checkbox"/>	Hot Dog	Reg Bun				
4	Hamburger	<input checked="" type="checkbox"/>	1/4 patty	Reg Bun				
5	Cheese Burger	<input checked="" type="checkbox"/>	1/4 patty	Reg Bun	Single Cheese	Big Bacon		
6	Double Burger	<input checked="" type="checkbox"/>	1/4 patty	1/4 patty	Reg Bun			
7	Small Sprite	<input checked="" type="checkbox"/>	10 oz					
8	Med. Sprite	<input checked="" type="checkbox"/>	16 oz					
9	Lg Sprite	<input checked="" type="checkbox"/>	24 oz					
10	IC Cone	<input checked="" type="checkbox"/>	Small Van Mix					
11	IC Dish	<input checked="" type="checkbox"/>	Medium Van Mix					
12	IC Dots	<input checked="" type="checkbox"/>	Large Van Mix					

# Getting Started

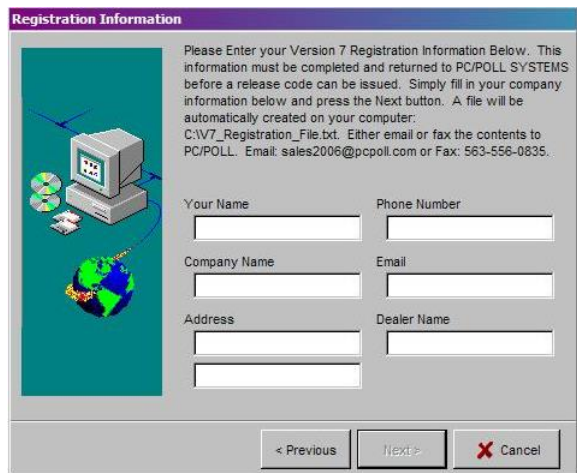
## Installation Instructions

If the DenView500.exe file has been downloaded from the Internet, please search for the file name to locate it on your hard drive. If the install is from a CD, just click on the DenView500 Install link.

*Note: The install and entry of the release code must be done with Administrative Rights. Please contact your network administrator for help.*



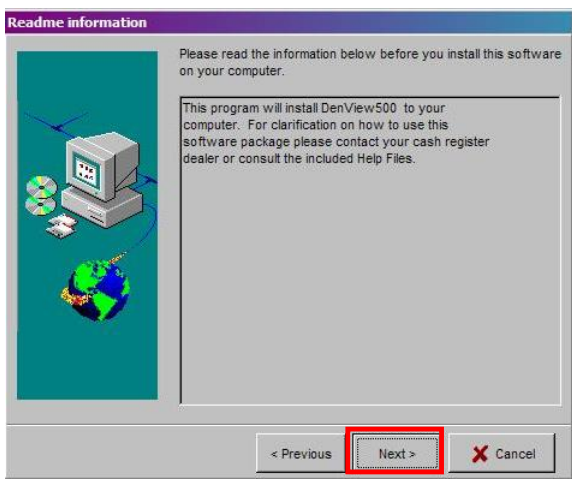
The first screen that appears during the installation is the Welcome screen. It will display the following message: "This Program will install DenView500 on your computer." This screen also recommends that all other running applications be closed before continuing with the Setup. Click **Next**.



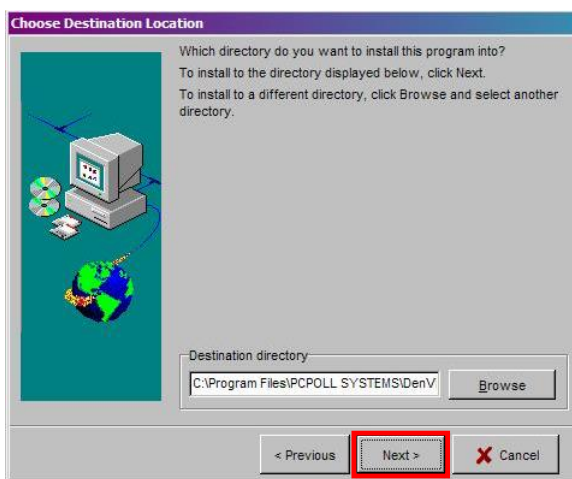
On the Registration Information screen, please fill out your company information. The software will record this information and create a file that can be emailed or faxed to PC/POLL to obtain a release code. The install will not continue until all entry areas are filled out. Click **Next**.



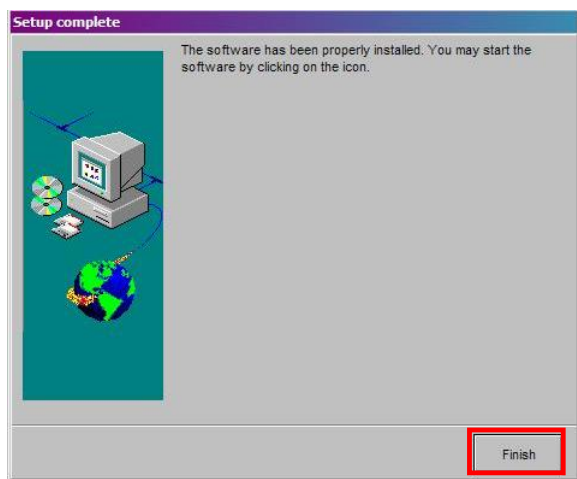
If you agree to the conditions listed on the License Agreement screen, click **Accept**.



The screen above is the Readme Information. Please read over the text carefully before clicking **Next**.



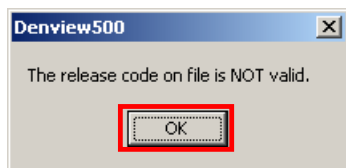
Then, select a destination for the software. It is recommended that the default location not be altered unless absolutely necessary. Click **Next** to begin installing the software.



After the Setup is finished, your registration information will be displayed. Please print off the information and fax it to 563-556-0405 or email it to Tri-Technical Systems at [sales@technology4retailers.com](mailto:sales@technology4retailers.com) . Click **Finish** on the final screen to complete the install.



A DenView500 icon will be placed on your desktop. Now the program can be opened by double-clicking on the new icon.



You will be prompted that the code on file is not valid. Clicking **OK** will display the Release Code entry screen on the next page.

## Release Code Screen

DenView500 Release Code	
To obtain a release code you must contact your dealer or PC/POLL SYSTEMS. You may call 563-556-2323 or EMAIL SALES@technology4retailers.COM or fax us at 563-556-0405. You need to provide the Machine Identification displayed below. If you are Emailing or faxing be sure and provide complete contact information...	
Machine Identification	9575FD3D
Code Version Date	Jan 1, 2005
Date Range	
Serial Number	
Release Code	
Update Release Code    ? Help    Close	

Please email your **Machine Identification** number to Tri-Technical Systems at [sales@technology4retailers.com](mailto:sales@technology4retailers.com) for the most efficient way of obtaining the **Release Code**. If email is not available, call 563-556-3556.

Someone from Tri-Technical Systems will then generate a Release Code and email that code back to you. Enter the code and then hit the **Update Release Code** button. After the code has been entered and accepted by the program, hit the **Close** button to enter the software.

The **Machine Identification** is an automatically generated number that is unique to your PC. The Tri-Technical Systems' staff must have that number in order to generate a release code.

The **Release Code** determines the **Serial Number** and **Date Range** within which the software can be used. The **Release Code** automatically updates this information; it cannot be edited.

*Note: The Computer's Date must be accurate in order for the release code to be accepted by the software.*

End-Users should always contact their dealers first with DenView500 questions. If the dealer is unable to answer the question, support options are available

# Quick Setup

DenView500 is a quick and easy program to use and a simple program to setup. Below is an outline of the steps needed to setup the software. For more information read the [Terminology](#) section of this manual.

1. Open DenView500 by clicking on the icon.
2. If this is the first time using the program, go to the File menu and select **New**. Use the **Please Select Master File** to create a window to select a location and name for the new file. Click **Open**. See the [File Menu](#) topic.
3. If the program has been used before, the software will open the most recently used Master file. If another file is desired, use the File menu and select **Open**. Then search for the desired Master file. Click **Open** to load the selected Master file.

*Note: Users may also create a new Master file. See Step 2.*

4. Export all PLU/UPC items from Version 6 or Version 7 Polling. See the [Adding Version 6 Items](#) topic or the [Adding Version 7 Items](#) topic.
5. Import those items into DenView500 using the File menu. See the [File Menu](#) topic.
6. Activate or De-Activate desired Master Items. The Active status can be set manually or through the Options menu. See the topic [Master Options Menu](#).
7. Click on the **Linked Items** tab and add all needed Raw Purchasing Units and Linked Items to the system. Each item should be added using the toolbar. For more information on toolbars or Linked Items please read the [Toolbars](#) topic and the topic on [Linked Items Tab](#).
8. Return to the **Master Items** tab and link all active PLU/UPC items to their associated Linked Items. See the topic on [Master Items](#).

For information on maintaining the system, see the topic of [Quick Maintenance](#).

## Quick Maintenance

There are really only two operations for the maintenance of DenView500: Importing new data and Resetting totals.

To Import Sales Data into the system:

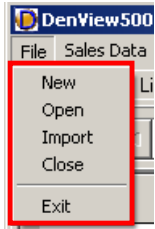
1. Export individual or consolidated report data from either Version 6 or Version 7 Polling. See the [Version 6 Reports](#) topic or see the [Version 7 Reports](#) topic.
2. Import that data into DenView500 via the Sales Data menu. Users can import one report at a time or multiple reports all contained within 1 file. See the topic [Sales Data Menu](#).
3. View the Item Usage Report via the Sales Data menu. See the topic [Item Usage Report](#).

To Reset All Sales Data:

1. Go to the Sales Data menu and select the Reset All Sales Data option. Users can reset their sales totals as often as needed.
2. DenView500 can store running totals or the system can be cleared after each use.

# Terminology

## File Menu



The File Menu allows users to perform basic software operations such as **New**, **Open**, **Import**, **Close** and **Exit**.

**New:** This option will open and create a new set of Master Item tables. Users are allowed to create multiple tables to use with multiple stores or simply use one set of tables for all of their stores.

**Open:** This option allows the user to open previously created Master Item tables from anywhere on their computer, external drive or network location.

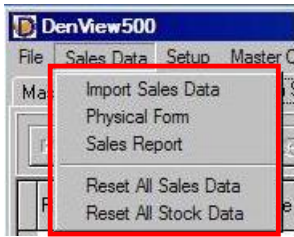
**Import:** Through the use of the Import option the user will create their Master Item list. After the item list has been exported from PC/POLL Version 6 or Version 7 Polling, the user will open DenView500 and select Import to bring their items into the software. For more information on this process, see the Help topic Transferring Data from Polling.

**Close:** This option will close the currently open Master Item table.

**Exit:** The Exit option will close DenView500.



# Sales Data Menu



From the Sales Data menu, users can import their PLU Sales Data, view a Usage Report of their DenView500 items, and Reset all of their sales data.

**Import Sales Data:** Using this option, users can import previously exported PLU sales report data. The report data can be from multiple machines or from a single machine. The data can also be from a consolidated PLU report. DenView500 supports all Version 6 and Version 7 cash registers. For more information on this process, see the Help Files topic [Transferring Data from Polling](#).

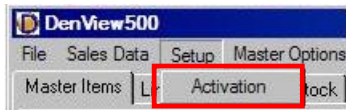
**Physical Form:** The physical form is a report users can print off to help count their on-hand items, take a physical inventory.

**Sales Report:** This option displays a usage report of the user's non-zero DenView500 items. Only items checked to **Show On Report** will be displayed. The **Show On Report** option is set on the Linked Items tab. See the topic on [Linked Items Tab](#).

**Reset All Sales Data:** The Reset option will clear out all running totals within DenView500. Master and Linked Items will not be removed, just the totals. Resetting allows users to view a smaller data set and thus can be done as often as desired by the user.

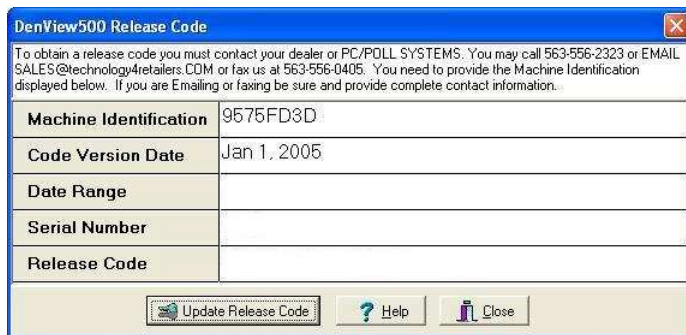
**Reset All Stock Data** DenView500 can be configured to track item usage, on-hand stock values, or both values. The reset Stock Data option only resets the current on-hand values to zero. This is similar to the Reset All Sales Data option.

## Setup Menu



The Setup Menu contains an option named **Activation**. By selecting this option the user's release code information will be displayed for viewing or editing. To obtain a new release code users should contact their cash register dealer or contact Tri-Technical Systems: 563-556-3556 or [sales@technology4retailers.com](mailto:sales@technology4retailers.com).

## Release Code Screen



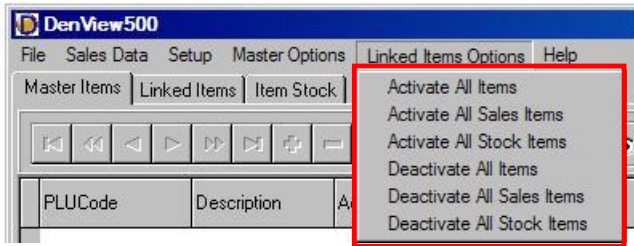
DenView500 Release Code

To obtain a release code you must contact your dealer or PC/POLL SYSTEMS. You may call 563-556-2323 or EMAIL SALES@technology4retailers.COM or fax us at 563-556-0405. You need to provide the Machine Identification displayed below. If you are E-mailing or faxing be sure and provide complete contact information.

Machine Identification	9575FD3D
Code Version Date	Jan 1, 2005
Date Range	
Serial Number	
Release Code	

Update Release Code   ? Help   Close

# Master Options Menu



All of these options pertain to the Linked Items tab within the software. DenView500 can be configured to track item usage, on-hand stock values, or both values. Item usage is similar to a sales report. Users can see how many items were used or sold. Not how many they currently have remaining. The on-hand stock values require users to enter a starting inventory value. Then as sales are imported, the numbers sold are deducted from the on-hand values to produce a report on the number of items that should be remaining in stock. Users can select a menu option to rapidly update all items in their list or select items and manually edit their selections.

**Activate All Items:** This option will activate, check, Show on Report options for all items for both Stock & Quantity sold.

**Activate All Sales Items:** This option will activate, check, Show on Report options for all items for only the Quantity sold field. The software will be tracking only item usage and not current on-hand stock values.

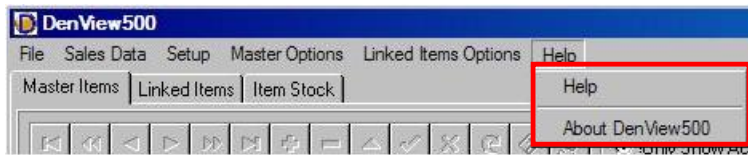
**Activate All Stock Items:** This option will activate, check, Show on Report options for all items for only the Stock Quantity field. The software will be tracking remaining in-stock items and not item usage.

**Deactivate All Items:** This option will deactivate, uncheck, Show on Report options for all items for both Stock & Quantity sold.

**Deactivate All Sales Items:** This option will deactivate, uncheck, Show on Report options for all items for only the Quantity sold field. The item usage for all items will not appear on the report.

**Deactivate All Stock Items:** This option will deactivate, uncheck, Show on Report options for all items for only the Stock Quantity field. The stock values for all items will not appear on the report

## Help Menu



**Help:** The Help Option displays the Help File.



**About:** Displays the current version number of the software and Tri-Technical Systems contact information.

Please use the current contact information:

Tri-Technical Systems  
3162 Cedar Crest Ridge  
Dubuque, IA 52003

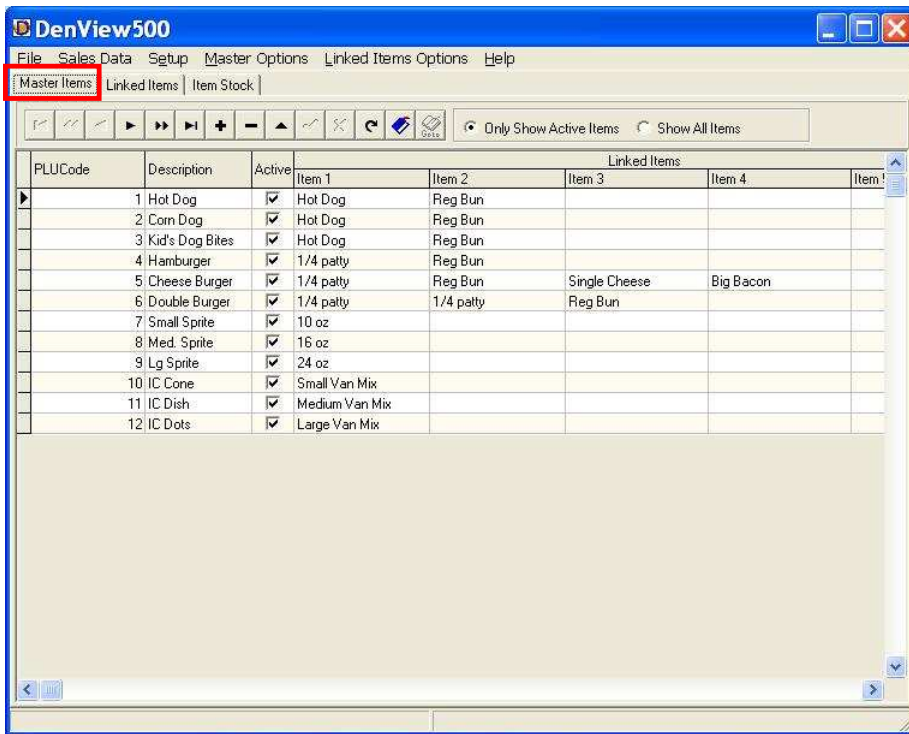
Voice: 563-556-3556

Fax: 563-556-0405

Sales & Support: [sales@technology4retailers.com](mailto:sales@technology4retailers.com)

Web: <http://www.technology4retailers.com/>

# Master Items Tab



The **Master Items** tab: Displays all imported or created PLU-Master Items and their Linked Items. From this tab, users can add new items, change their Linked Items, and set the Active status on each item.

**PLUCode:** Displays the PLU or UPC number of the item. These values can be exported from Version 6 or Version 7 Polling and imported in DenView500. These values can also be manually entered.

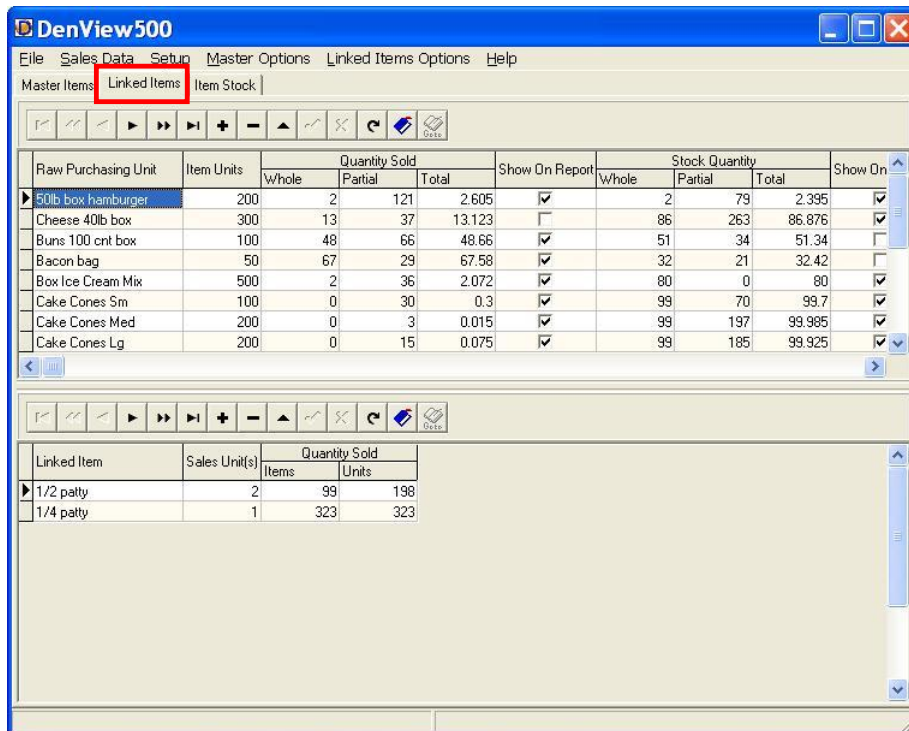
**Description:** Displays the name of the PLU or UPC item. These values can be exported from Version 6 or Version 7 Polling and imported in DenView500. These values can also be manually entered.

**Active:** The Active status is for both display and sales data importing purposes. If an item is set to inactive and the Only Show Active Items option is set, all in-active items will be hidden from view. When sales data is imported, only data for active PLUCodes will be brought into the system. Inactive PLUCodes will be skipped. By default, all items are Active.

**Item 1 - 5:** Within these fields, users can select from a drop-down box containing all created Linked Items. Users may connect up to 5 Linked Items to a PLUCode. *Note: DenView500 can also be used as a very simple hard-goods tracking system. For this type of installation, users would link each PLU item to only one component item. For example, if the item were a hammer, the component item would also be a hammer.*

**Active Preference:** The Only Show Active Items and Show All Items preference allows users to see different views of their Master Items list.

# Linked Items Tab



From the **Linked Items** tab, the user will add their Raw Purchasing Units and Linked Items to the system. The top grid will display all Raw Purchasing Units. The lower grid displays all the Linked Items associated with the selected Raw Purchasing Unit. The Quantity Sold columns will display all imported sales totals. The values will be zero when setting up the system or after a Reset of All Sales Data.

## Top Grid Menu

**Raw Purchasing Unit:** This column contains a list of wholesale package units.

**Item Units:** Within this column, users should enter the total number of units contained within the Raw Purchasing Unit. These units should be calculated by using the smallest sales unit as the divisor. For example, if the Raw Unit is 50 lbs. of hamburger and the smallest amount of hamburger that a business uses in any of its dishes is 1/4 lb. then the value for Item Units would be 200. The math would be  $50 / .25 = 200$ . Another example is wine. The Item Units column contains six, which is the number of glasses per bottle.

**Quantity Sold-Whole:** Displays the number of whole Raw Purchasing Units that have been used by the system. For example, if the Item Units field is set to 200 and 521 units were used; the Whole field would display 2. These fields are populated by the software after an import of PLU report sales data.

**Quantity Sold-Partial:** Displays the number of Partial Raw Purchasing Units that have been used by the system. For example, if the Item Units field is set to 200 and 521 units were used; the Partial field would display 121. These fields are populated by the software after an import of PLU report sales data.

**Quantity Sold-Total:** Displays the number of Total Raw Purchasing Units that have been used by the system. The value is displayed in decimal form. For example, if the Item Units field is set to 200 and 521 units were used, and then the Total field would display 2.605. These fields are populated by the software after an import of PLU report sales data.

**Show on Report:** This preference allows users to skip or view items on their Item Usage Report.

**Stock Quantity-Whole:** Displays the number of whole Raw Purchasing Units that remain in stock or on-hand after an import of sales data. Prior to importing sales data users should enter starting on-hand values or receive stock. If no items are on-hand, the system will display negative values for stock. For example, if the Item Units field is set to 200 units/box, 521 units were used, and the starting on-hand value was 5 boxes, the Whole field would display 2. These fields are populated by the software after an import of PLU report sales data.

**Stock Quantity-Partial:** Displays the number of Partial Raw Purchasing Units that remain in stock or on-hand after an import of sales data. Prior to importing sales data users should enter starting on-hand values or receive stock. If no items are on-hand, the system will display negative values for stock. For example, if the Item Units field is set to 200 units/box, 521 units were used, and the starting on-hand value was 5 boxes, the Partial field would display 79. These fields are populated by the software after an import of PLU report sales data.

**Stock Quantity-Total:** Displays the number of Total Raw Purchasing Units that remain in stock or on-hand after an import of sales data. Prior to importing sales data users should enter starting on-hand values or receive stock. If no items are on-hand, the system will display negative values for stock. The value is displayed in decimal form. For example, if the Item Units field is set to 200 units/box, 521 units were used, and the starting on-hand value was 5 boxes, then the Total field would display 2.395 remaining in stock. These fields are populated by the software after an import of PLU report sales data.

**Show on Report:** This preference allows users to skip or view stock items on their Item Usage Report.

## Lower Grid Menu

**Linked Item:** Users should enter in the **Linked Item** column, all linked items that are associated with the selected Raw Purchasing Unit. For example, if the Raw Purchasing Unit was 50 lbs. of hamburger, a few sample Linked Items could be 1/4 lb. burger, 1/2 lb. burger, and 1 lb. burger.

**Sales Unit(s):** Within this column users should input the number of Item Units used by the Linked Item. For example, if the Raw Purchasing Unit is again 50 lbs of hamburger, the number of Item Units is 200 (the number of 1/4 lb burgers). If the Linked Item were a 1/2 lb burger the number of Sales Units would be 2 because there are two 1/4 lb burgers in each 1/2 lb burger.

**Quantity Sold-Items:** Displays the number of individual, Linked Items sold. For example, if 99 - 1/2 lb burgers were sold the Items field would display 99. These fields are populated by the software after an import of PLU report sales data.

**Quantity Sold-Units:** Displays the number of individual Item Units sold. For example, if 99 - 1/2 lb burgers were sold, and each burger uses 2 Item Units, the number of Units sold would be 198. These fields are populated by the software after an import of PLU report sales data.

# Item Usage Report

The screenshot shows a 'Print Preview' window with a navigation pane on the left and a main report area. The report is titled 'Item Usage Report' and contains several tables. Each table starts with a 'Raw Purchasing Unit' and lists 'Whole Qty Used', 'Partial Qty Used', and 'Total Qty Used'. Below each unit, a 'Linked Item' table shows 'Qty Sold (Items)' and 'Qty Sold (Units)' for various sub-items.

Raw Purchasing Unit	Whole Qty Used	Partial Qty Used	Total Qty Used
50 lbs of hamburger	2	121	2.605
<b>Linked Item</b>			
1/4 lb burger	131	131	
1/2 lb burger	99	198	
1 lb burger	48	192	
<b>Raw Purchasing Unit</b>			
pork loin	11	4	11.053
<b>Linked Item</b>			
1/3 of a chop	56	56	
2/3 of a chop	175	250	
1 whole chop	141	423	
<b>Raw Purchasing Unit</b>			
wine bottle	23	4	23.666
<b>Linked Item</b>			
wine glass	82	82	
wine bottle	10	60	
<b>Raw Purchasing Unit</b>			
bottle of rum	7	59	7.921
<b>Linked Item</b>			
1/2 oz shot	17	17	
1 oz shot	51	102	
2 oz shot	97	388	
<b>Raw Purchasing Unit</b>			
burger buns	2	30	2.3
<b>Linked Item</b>			
1 bun	230	230	
<b>Raw Purchasing Unit</b>			
cheese slices	1	45	1.3
<b>Linked Item</b>			
1 cheese slice	99	99	
2 cheese slices	48	96	

DenView500 contains an Item Usage Report. This report displays the number of Whole and Partial Raw Purchasing Units used along with the associated Linked Item usage.

**Raw Purchasing Unit:** This is the wholesale packaging unit for an item.

**Whole Qty Used:** Displays the number of whole Raw Purchasing Units that have been used by the system. For example, if the Item Units field is set to 200 and 521 units were used; the Whole field would display 2.

**Partial Qty Used:** Displays the number of Partial Raw Purchasing Units that have been used by the system. For example, if the Item Units field is set to 200 and 521 units were used, and then the Partial field would display 121.

**Total Qty Used:** Displays the number of Total Raw Purchasing Units that have been used by the system. The value is displayed in decimal form. For example, if the Item Units field is set to 200 and 521 units were used, and then the Total field would display 2.605.

**Linked Item:** This displays a list containing the ways in which the Raw Purchasing Unit is sold.

**Quantity Sold-Items:** Displays the number of individual, Linked Items sold. For example, if 99 - 1/2 lb burgers were sold the Items field would display 99.

**Quantity Sold-Units:** Displays the number of individual Item Units sold. For example, if 99 - 1/2 lb burgers were sold, and each burger uses 2 Item Units, the number of Units sold would display 198.

**Displayed Items:** In order for items to be displayed on this report, they must contain sales data and the Show On Report option, from the **Linked Items** tab, must be set to active.



**Stock Whole Qty Used:** Displays the number of whole Raw Purchasing Units that remain in the system after the sales numbers have been deducted from on-hand values. For example, if the Item Units field is set to 200 units/box, 521 units were used, and the starting on-hand value was 5 boxes, the Whole field would display 2.

**Stock Partial Qty Used:** Displays the number of Partial Raw Purchasing Units that that remain in the system after the sales numbers have been deducted from on-hand values. For example, if the Item Units field is set to 200 units/box, 521 units were used, and the starting on-hand value was 5 boxes, then the Partial field would display 79.

**Stock Total Qty Used:** Displays the number of Total Raw Purchasing Units that remain in the system after the sales numbers have been deducted from on-hand values. The value is displayed in decimal form. For example, if the Item Units field is set to 200 units/box, 521 units were used, and the starting on-hand value was 5 boxes, then the Total field would display 2.395.

*Note: The Active status, on the **Master Items** tab, can also influence the report data. When sales data is imported, into DenView500, only data for active PLUCodes will be brought into the system. De-active PLUCodes will be skipped and if there is no data, for a particular Raw Purchasing Unit, it will not be displayed on the report.*

## Item Stock Tab

Raw Purchasing Unit	New/Adjust Stock		Stock Quantity			Last Modified		
	Whole	Partial	Whole	Partial	Total	Whole	Partial	Trans Type
50lb box hamburger			2	79	2.395	5	0	R 02/17/20
Cheese 40lb box			86	263	86.876	100	0	A 10/24/200
Buns 100 cnt box			54	57	54.57	100	0	A 10/24/200
Bacon bag	3		32	21	32.42	100	0	A 10/24/200
Box Ice Cream Mix			80	0	80	80	0	R 02/17/20
Cake Cones Sm			99	70	99.7	100	0	A 10/24/200
Cake Cones Med			99	197	99.985	100	0	A 10/24/200
Cake Cones Lg			99	185	99.925	100	0	A 10/24/200
75 hot dog box			0	-52	-0.693	0	0	
Fountain Sprite			-2	-88	-2.44	0	0	

The **Item Stock** tab allows users to import or receive stock values for their Raw Purchasing Units. Users can choose to append, or add to the existing stock values, or they can completely replace the stock values with a new stock value.

**Append Button:** Users enter in new Whole and Partial stock values into the grid. By pressing the Append button, the newly entered values will be added to the existing on-hand values. This is similar to receiving new items.

**Replace Button:** Users enter in new Whole and Partial stock values into the grid. By pressing the **Replace** button, the newly entered values completely replace the existing on-hand values. This is similar to taking a physical inventory of an item.

**Raw Purchasing Unit:** This column contains the list of wholesale package units that were entered on the Linked Items tab.

**Whole (New/Adjust Stock):** Enter the number of whole Raw Purchasing units that were received or enter a physical inventory value for this item. Pressing the Append button will add the entered value to the existing on-hand totals. Pressing the Replace button will replace the existing on-hand totals. For example, if the Item Units field is set to 200 units/box and 2.5 boxes were received, the whole number would be 2.

**Partial (New/Adjust Stock):** Enter the number of partial Raw Purchasing units that were received, or enter a physical inventory value. Pressing the Append button will add the entered value to the existing on-hand totals. Pressing the Replace button will replace the existing on-hand totals. For example, if the Item Units field is set to 200 units/box and 2.5 boxes were received, the partial number would be 100 (for half of a 200-unit box).

**Stock Whole Quantity:** Displays the current number of whole Raw Purchasing Units that remain in the system after the sales numbers have been deducted from on-hand values. For example, if the Item Units field is set to 200 units/box and 521 units were used and the starting on-hand value was 5 boxes, the Whole field would display 2.

**Stock Partial Quantity:** Displays the current number of Partial Raw Purchasing Units that remain in the system after the sales numbers have been deducted from on-hand values. For example, if the Item Units field is set to 200 units/box and 521 units were used and the starting on-hand value was 5 boxes, then the Partial field would display 79.

**Stock Total Quantity:** Displays the number of Total Raw Purchasing Units that remain in the system after the sales numbers have been deducted from on-hand values. The value is displayed in decimal form. For example, if the Item Units field is set to 200 units/box and 521 units were used and the starting on-hand value was 5 boxes, then the Total field would display 2.395.

**Whole (Last Modified):** Displays the last whole amount that was entered into the system. This number may be zero if only partial values were entered for the last append or replace operation. This value can be used as an audit trail.

**Partial (Last Modified):** Displays the last partial amount that was entered into the system. This number may be zero if only whole values were entered for the last append or replace operation. This value can be used as an audit trail.

**Trans Type – Date – Time:** Displays an “R” or an “A” to indicate if the last update was a Replace or Append. A date/time stamp of when the event occurred is also displayed. This value can be used as an audit trail.

# Sample Screens

## Item Usage Report

**Item Usage Report**

Sold				Stock		
Raw Purchasing Unit	Whole Qty	Partial Qty	Total Qty	Whole Qty	Partial Qty	Total Qty
50lb box hamburger	2	121	2,605	2	79	2,395
<b>Linked Item</b>	<b>Qty Sold (Items)</b>	<b>Qty Sold (Units)</b>				
1/2 patty	99	198				
1/4 patty	323	323				
Stock						
Raw Purchasing Unit	Whole Qty	Partial Qty	Total Qty			
Cheese 40lb box	86	263	86,876			
<b>Linked Item</b>	<b>Qty Sold (Items)</b>	<b>Qty Sold (Units)</b>				
Double Cheese	450	900				
Single Cheese	3037	3037				
Sold						
Raw Purchasing Unit	Whole Qty	Partial Qty	Total Qty			
Buns 100 cnt box	48	66	48,666			
<b>Linked Item</b>	<b>Qty Sold (Items)</b>	<b>Qty Sold (Units)</b>				
Reg Bun	4866	4866				
Sold						
Raw Purchasing Unit	Whole Qty	Partial Qty	Total Qty			

## Physical Form

**Physical Form**

Description	Current		New	
	Whole Qty	Partial Qty	Whole Qty	Partial Qty
50lb box hamburger	107	33		
Cheese 40lb box	86	263		
Box Ice Cream Mix	80	0		
Cake Cones Sm	99	70		
Cake Cones Med	99	197		
Cake Cones Lg	99	185		
75 hot dog box	0	-52		
Fountain Sprite	-2	-88		

# Toolbars



On both the Master Items and Linked Items screens are user toolbars. Below are the descriptions of each of the toolbar options.



Moves the cursor to the first record in the table.



Moves the cursor backwards 10 records towards the first record in the table.



Moves the cursor back to the prior record.



Moves the cursor forward one record.



Moves the cursor forward 10 records towards the last record in the table.



Moves the cursor to the last record in the table.



Inserts a new record into the table.



Deletes the selected record from the table.



Places the currently selected record into an edit state to allow users to make changes.



Posts changes to a record to the database.



Cancels the changes made to the currently selected record. This option must be used prior to posting the edit.



Refreshes the data from the database.



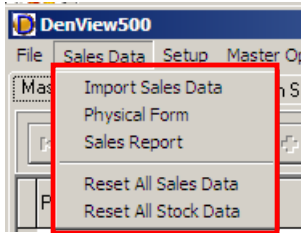
Inserts a bookmark on the currently selected record. A bookmark is a placeholder that can be easily returned to by clicking on the **GoTo** button.



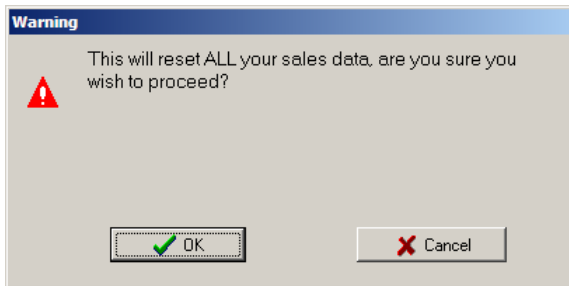
Returns the cursor to the previously created bookmark. The software can only store one bookmark at a time.

# Software Prompts

DenView500 was designed to display usage and stock data on-demand. The software can store running totals, however making major edits to such fields as Item Units and Linked Units, with running totals, is not recommended as the changes may skew the data.

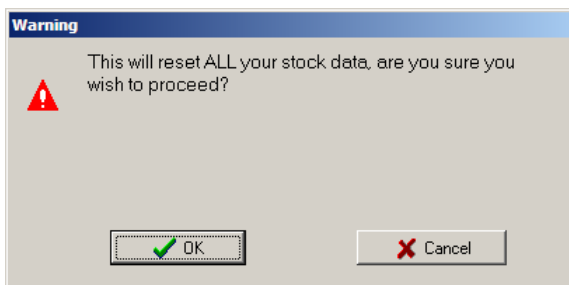


Before making dramatic edits, it is strongly recommended that users go to the **Sales Data** menu and scroll down to **Reset All Sales Data** to reset all their sales data.

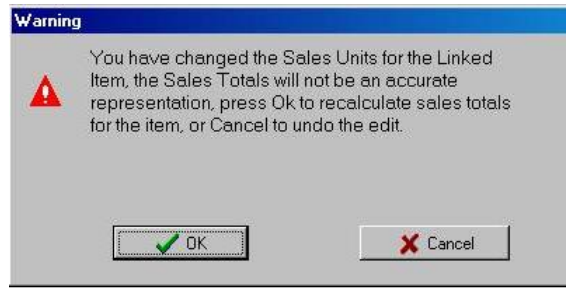
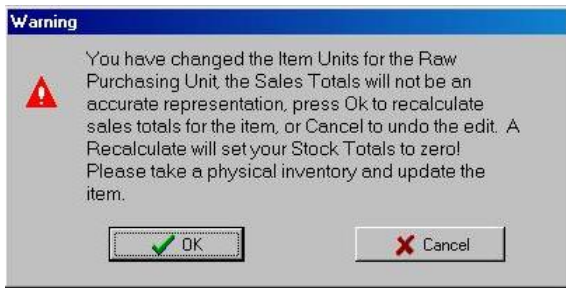


The Warning screen above will open. Click the **OK** button to proceed or **Cancel** to stop the reset.

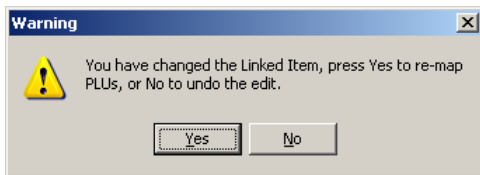
The user should pick **Reset All Stock Data** from the Sales Data menu.



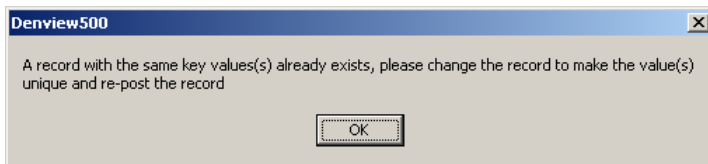
The Warning screen above will open. To proceed, click **OK** or to cancel the reset click on **Cancel**. Within the software, user prompts have been added to help users make minor changes to their setup. Below is a listing of the prompts and an explanation of the functions.



The messages above will appear if the user attempts to edit either the Item Units or Sales Units fields. Changing these fields will result in the software resetting all totals values associated with these items.



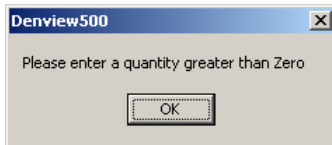
Changing a descriptor of a linked item will result in the message above. If **Yes** is selected the software will go through the Master Items table and update each record.



If a Linked Item with the same descriptor is added to the software, the message above will appear. Linked Item descriptors must be unique.



The software will display the prompt above when deleting a Master, Raw Purchasing, or Linked Item. Deleting a Raw Purchasing or Linked Item will result in the software automatically removing all associated links from the Master Items list.



If a Raw Purchasing Unit is added or edited to display 0 Item Units, the software will display the above prompt. 0 Item Units is not allowed by the software.



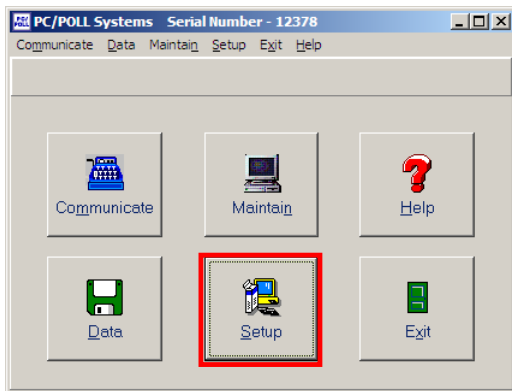
# Transferring Data from Polling

## Version 6 Items

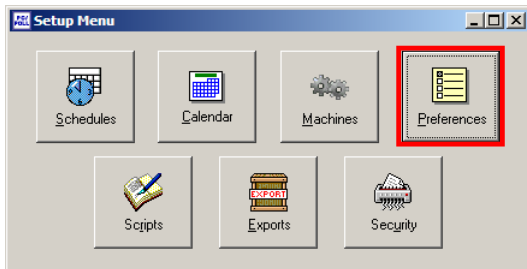
DenView500 receives both its Master Items and sales data from Version 6 and/or Version 7 Polling. Below are the instructions for using Version 6 Polling.

### Exporting Master Items

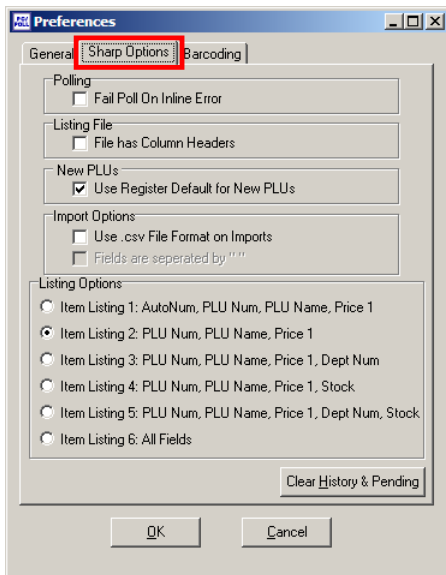
The Master Items list is populated from Version 6 Polling's PLU/UPC list. To export PLU/UPC items from Version 6 please follow the steps below.



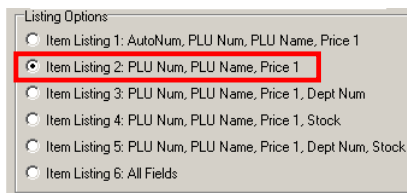
1. Open Version 6 Polling and click on the **Setup** button.



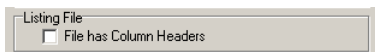
2. From within the **Setup** menu select **Preferences** button.



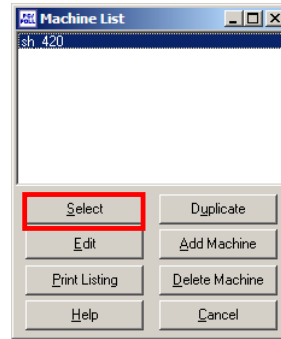
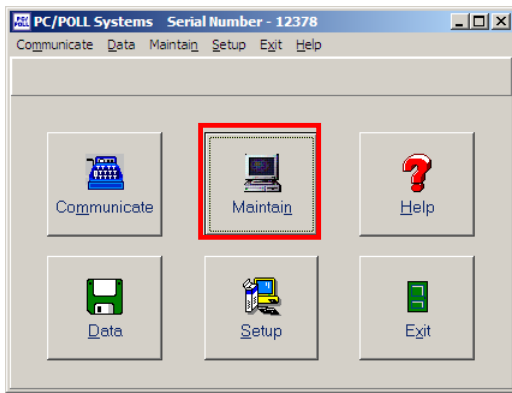
3. Click on the **Options** tab. The exact name of the options tab will depend upon which register type is being used. For example, a TEC register would have a **TEC Options** tab. Sharp would have a **Sharp Options** tab (as in the example above), CRS a **CRS Options** tab, and Sam4s would have a **Sam4s Options** tab.



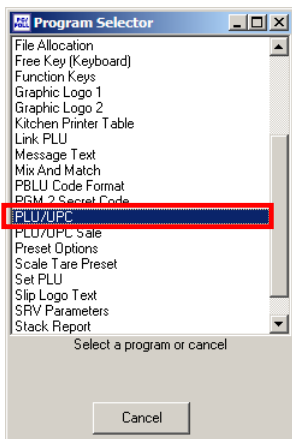
4. Within **Listing Options**, select **Item Listing 2**.



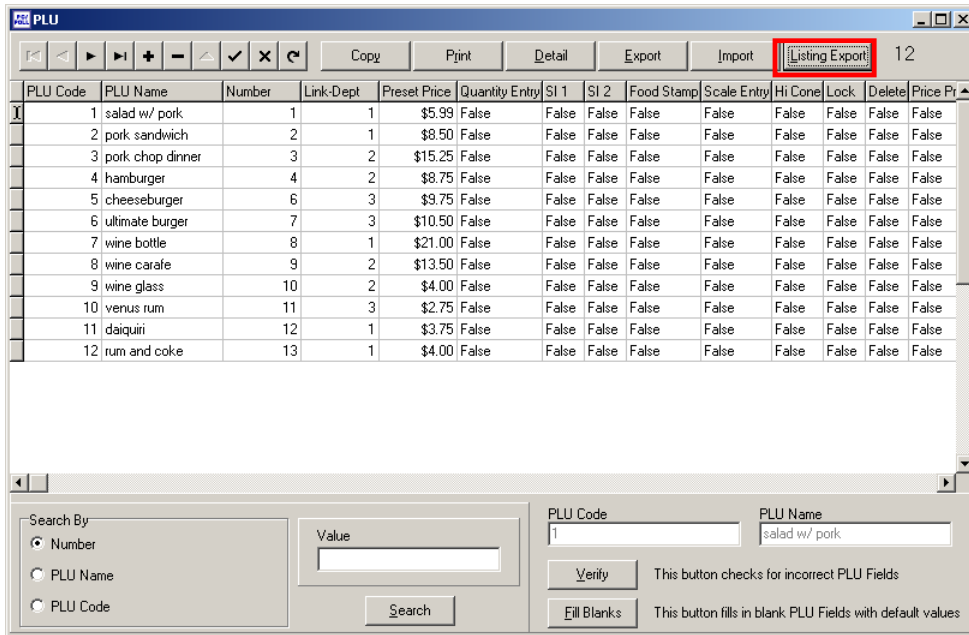
5. Make sure the File has the **Column Headers** option is unchecked. Click **OK** at the bottom of the Preferences screen.



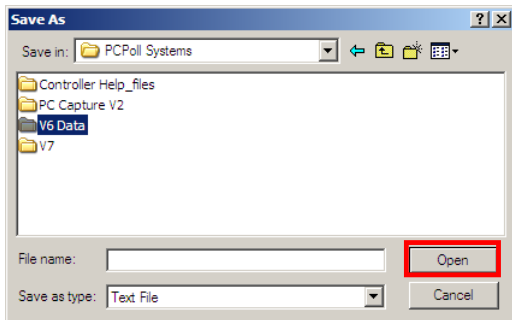
6. Now return to the main screen of the software and select **Maintain**.
7. Highlight the desired machine and click **Select**.



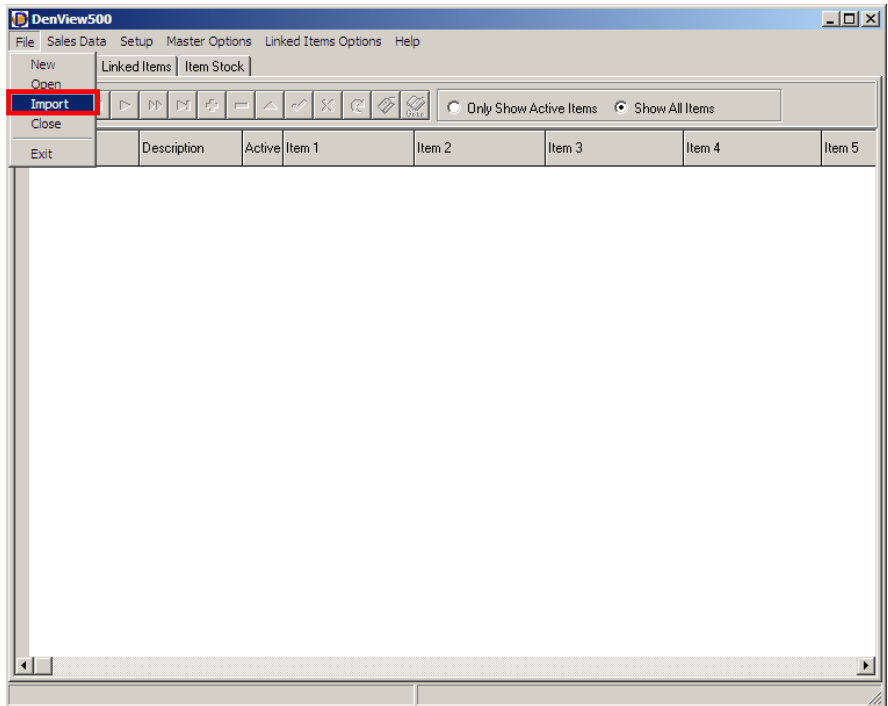
8. From within the Program Selector open the PLU/UPC file.



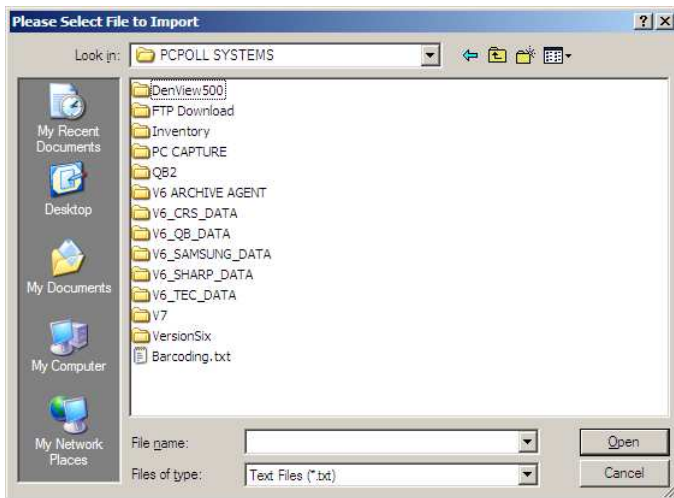
9. The PLU Grid will open. On the PLU/UPC grid there is a button named **Listing Export**. Click the button.



10. A Save As screen opens. Select a destination for the export information then click the **Open** button. *Note: Be sure to remember the name and location of the file.*



11. Open DenView500 and from the **File** menu select **Import**.

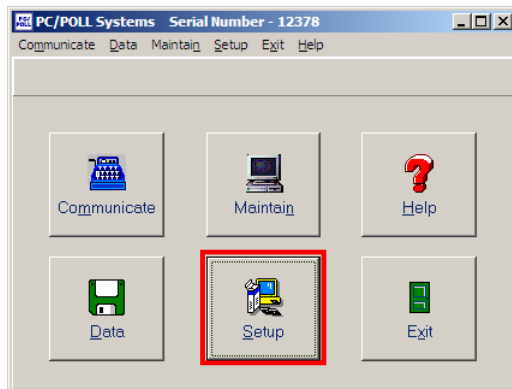


12. Locate the exported file and import the data into DenView500.

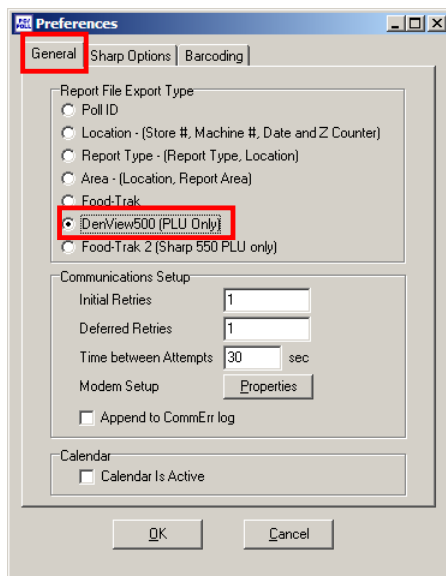
# Version 6 Reports

A special report export format has been created for use with DenView500. This format can be used via manual or auto exports. In order to access this report format users will need to have Version 6 Polling build 88 or greater. All users should contact their dealers before updating.

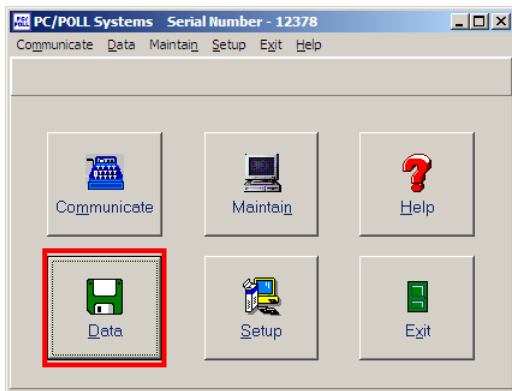
## Exporting Version 6 Report Data



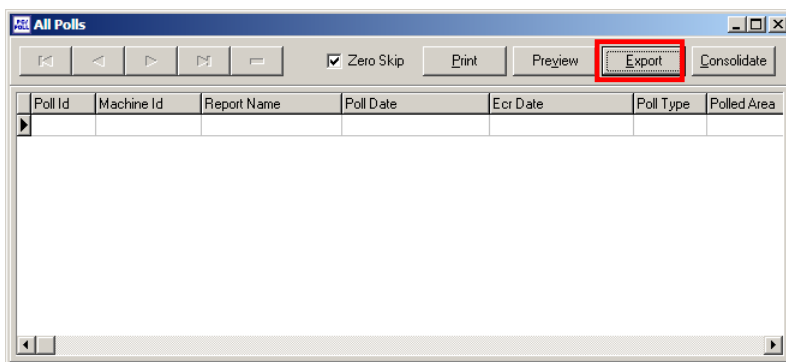
1. Open Version 6 Polling and click on the **Setup** button.
2. From within the Setup menu select **Preferences**.



3. On the **General** tab, under Report File Export Type, select **DenView500**, the second to last option. This option will apply to both manual exports and auto-exports.

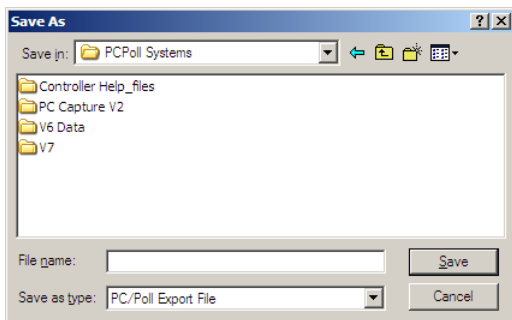


4. To export V6 Polling data manually simply return to V6 Polling's main menu and click on the **Data** button.

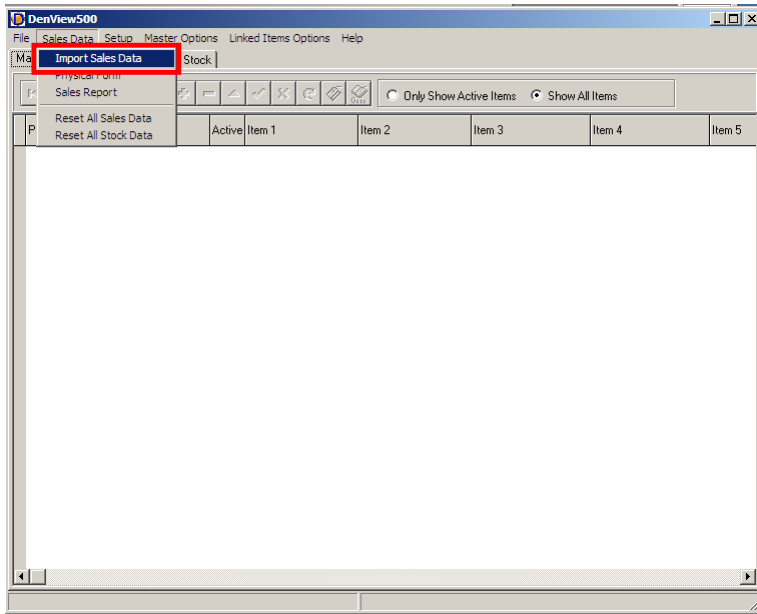


5. From within the **AllPolls** grid, select the desired PLU/UPC reports to export. To multi-select reports, use the ctrl or shift keys on the keyboard. *Note: Only PLU or UPC reports can be exported to DenView500.*

6. Click on the **Export** button.



7. Select a name and location for the file.



8. Open DenView500 and from the Sales Data menu select **Import Sales Data**.

*Note: To export data via the auto export option a script and schedule must be setup. For more information on these features, please consult the Version 6 help files.*

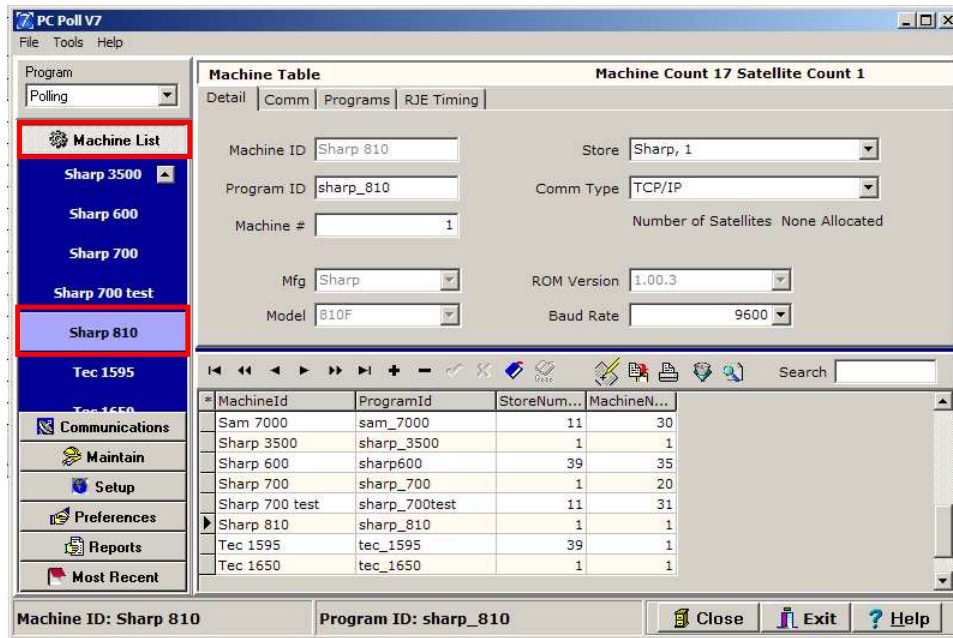


## Version 7 Items

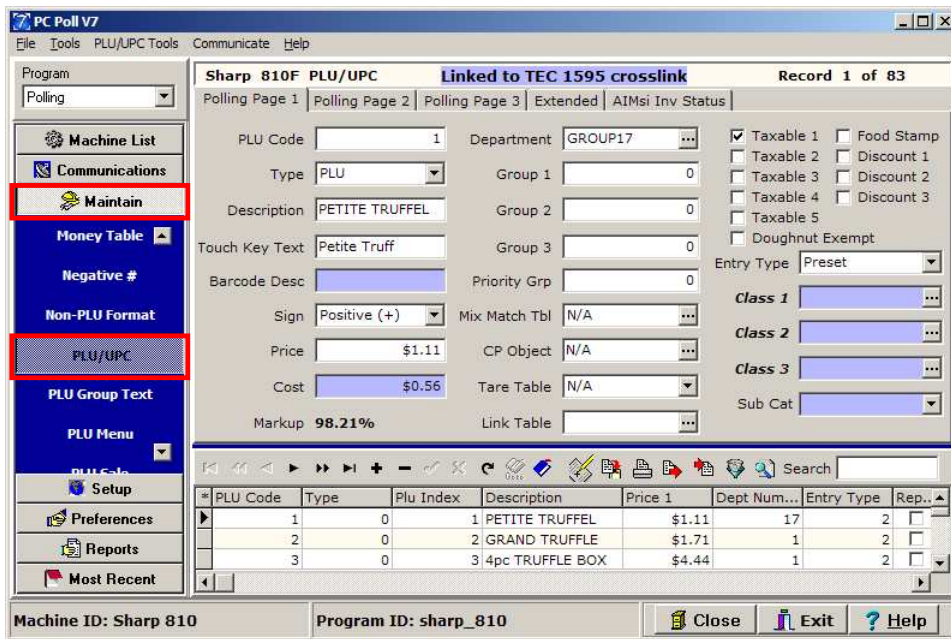
DenView500 receives both its Master Items and sales data from Version 6 and/or Version 7 Polling. Below are the instructions for using Version 7 Polling.

### Exporting Master Items

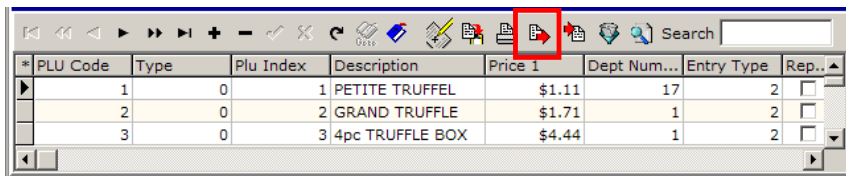
The Master Items list is populated from Version 7 Polling's PLU/UPC list. To export PLU/UPC items from Version 7 please follow the steps below.




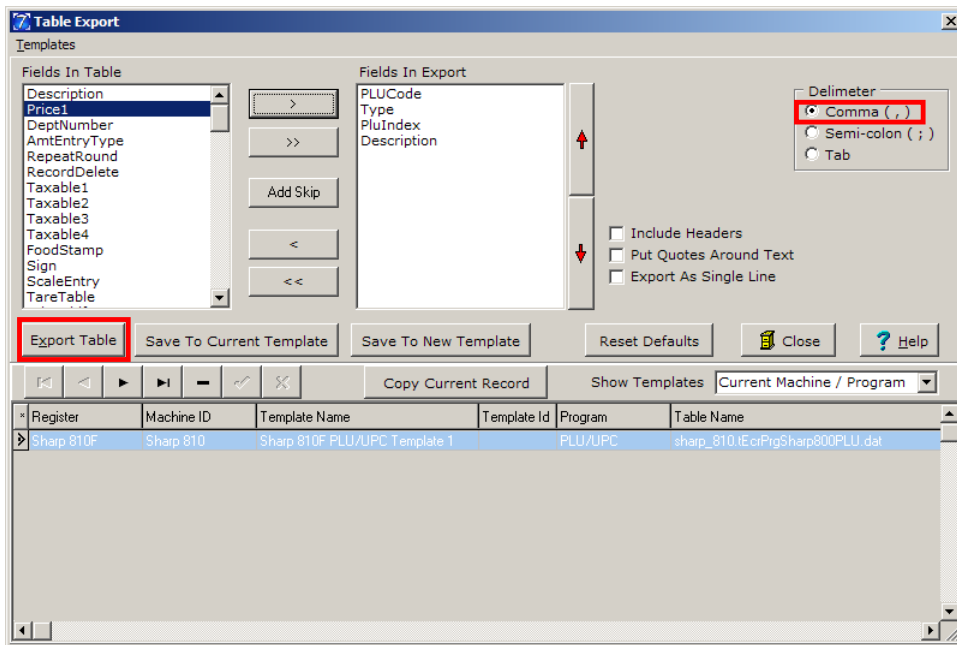
1. Open Version 7 Polling and click on the **Machine List** button.
2. Select a machine from the **Machine List** by simply clicking on the machine name.



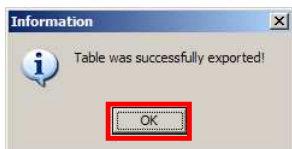
3. Click on the **Maintain** button to display a list of programs associated with the selected machine.
4. Scroll down to and click on **PLU/UPC**.



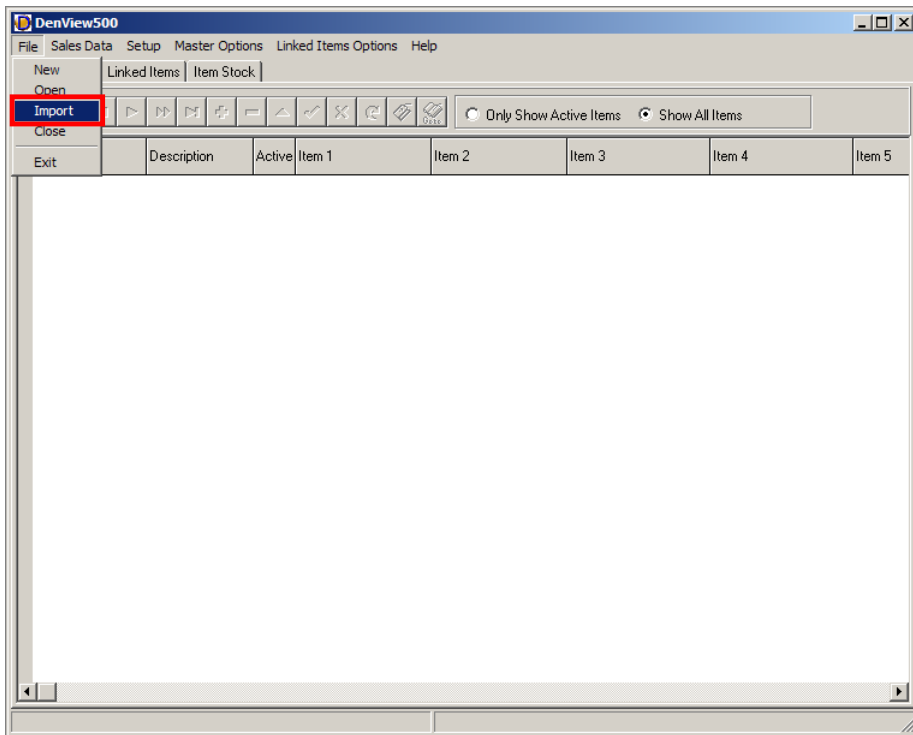
5. From within the Version 7 toolbar area select the **Export text file**  button.



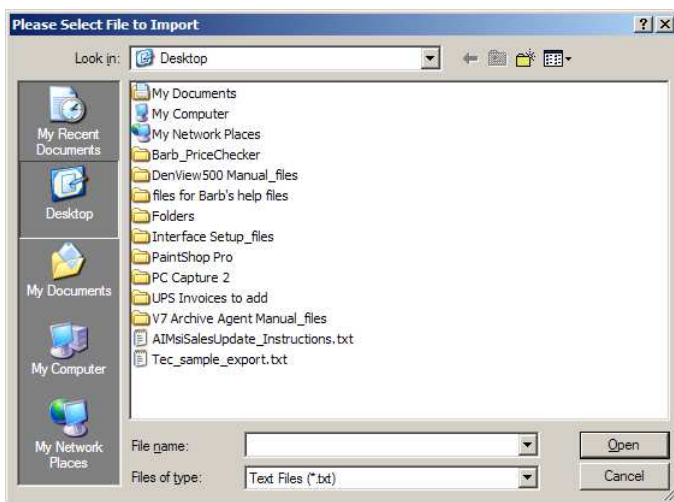
6. On the Export menu select the following 3 fields to export: PLU/UPC number, PLU/UPC name and PLU/UPC price. *Note: The exact names may vary per machine type.*
7. Select **Comma Delimited** and click the **Export Table** button.
8. A Save As screen will open. Pick a location and a name for the file. Be sure to remember the location of the file. *Note: If any of the PLU/UPC item names contain commas, user must check the **Put Quotes Around Text** option before exporting.*



9. If the export is successful the screen above will open. Click **OK**.



10. Open DenView500 and from the File menu select **Import**.



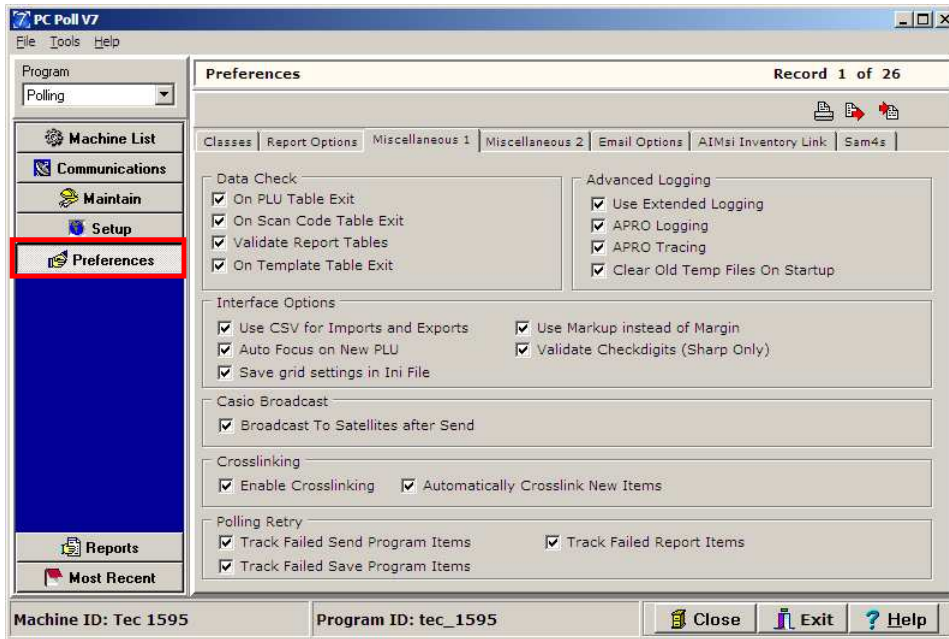
11. Locate the exported file and import the data into DenView500.

For instructions on exporting report data, see the Version 7 Report topic on the next page.

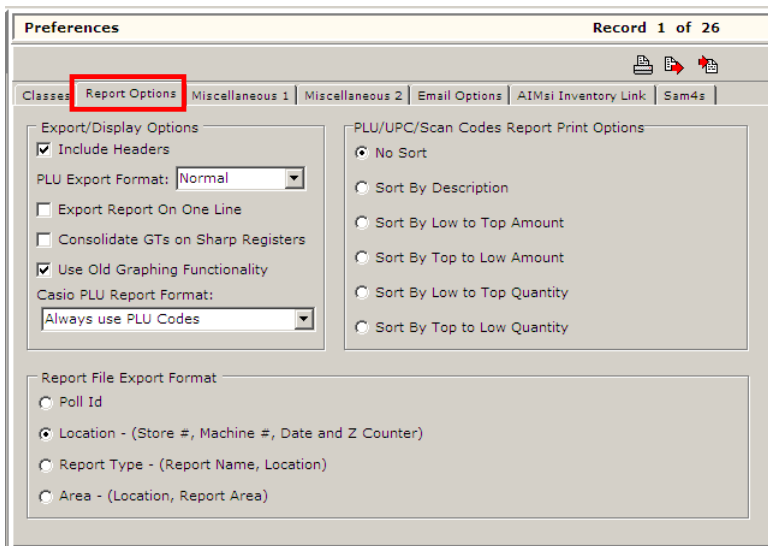
# Version 7 Reports

A special report export format has been created for use with DenView500. This format can be used via manual or auto exports. In order to access this report format users will need to have Version 7 Polling build 60 or greater. All users should contact their dealer before updating.

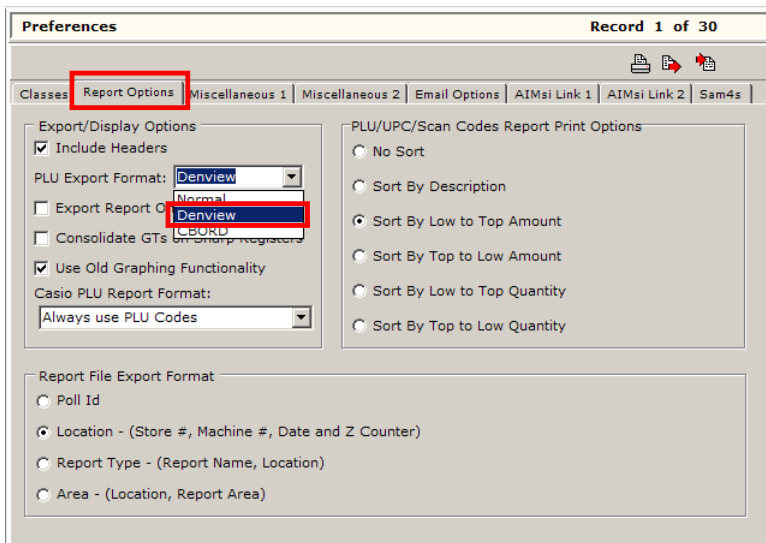
## Exporting Version 7 Report Data



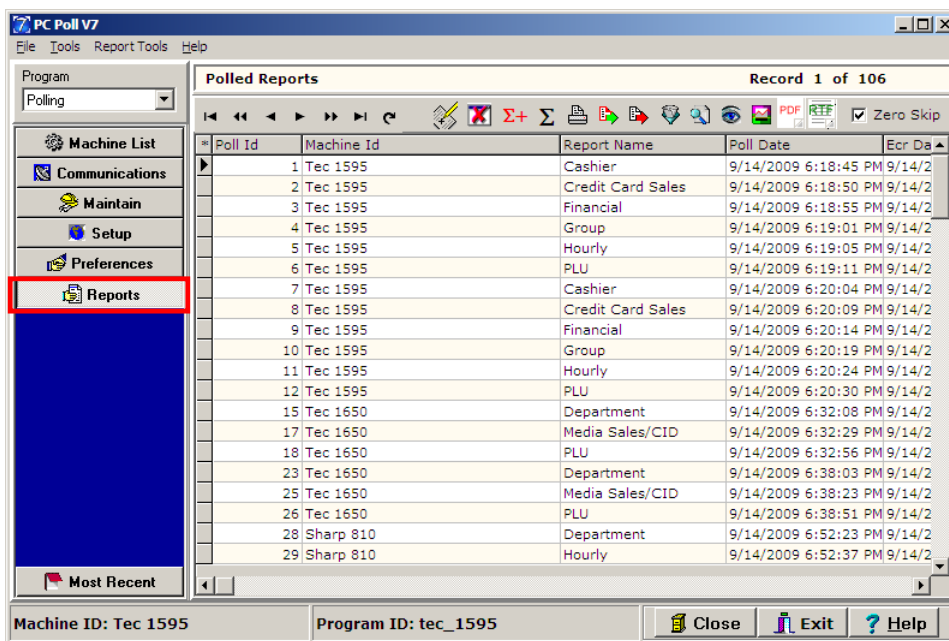
1. Open Version 7 Polling and click on the **Preferences** button from the menu on the left.



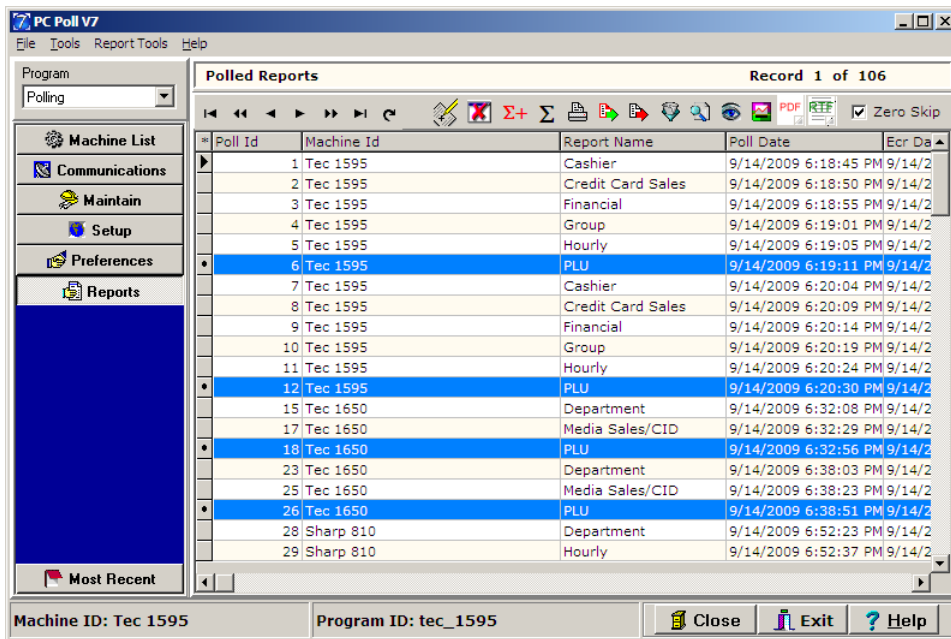
2. From within the Preferences menu select the **Report Options** tab.



3. Within the **Report File Export Format** area, select the **DenView500** option from the **PLU Export Format** drop down menu. This option will apply to both manual exports and auto-exports.




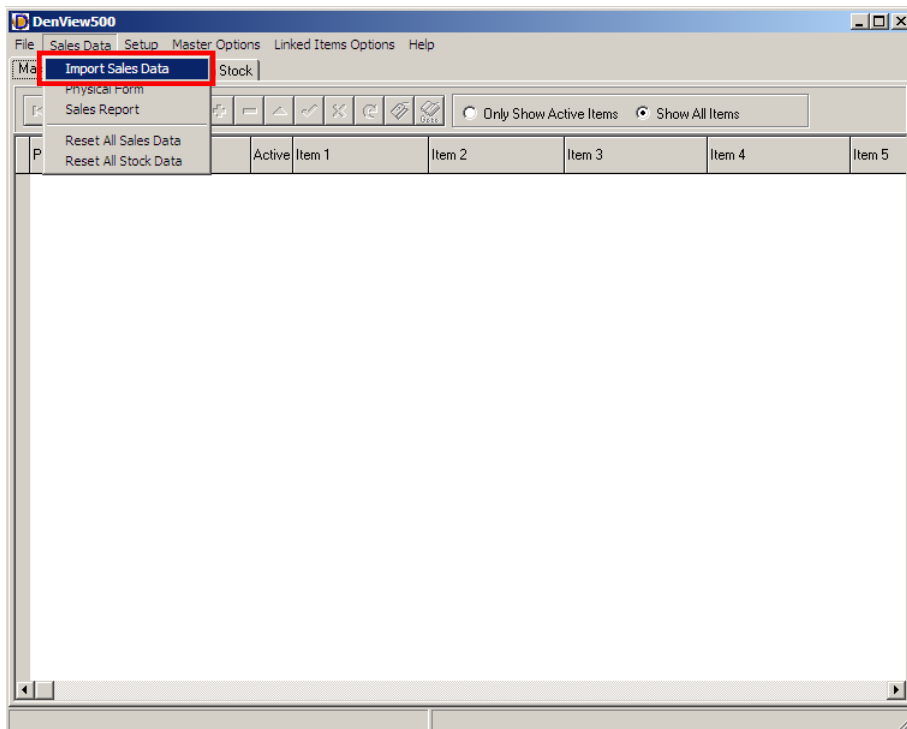
4. To export V7 Polling data manually click on the **Reports** button from the left menu.



- From within the **Polled Reports** grid select the desired PLU/UPC reports to export by clicking on them to highlight them. To multi-select reports, use the **Ctrl** or **Shift** keys on the keyboard.

*Note: Only PLU or UPC reports can be exported to DenView500.*

- Click on the **Export Text File**  button from the toolbar near the top of the screen. Select a name and location for the file.



- Open DenView500 and from the Sales Data menu select **Import Sales Data**.

*Note: To export data via the auto export option a script and schedule must be setup. For more information on these features, please consult the Version 7 Help Files or online tutorials.*



# Index

<b>Activate All Items</b> .....	19
<b>Activate All Sales Items</b> .....	19
<b>Activate All Stock Items</b> .....	19
<b>Active status</b> .....	21
<i>Administrative Rights</i> .....	10
<b>AllPolls</b> grid .....	39
auto-exports.....	46
Backup.....	8
<b>Close</b> .....	16
<b>Column Headers</b> option .....	34
CRS Options tab.....	34
<b>Crucial Information for Technical Support</b> .....	7
Current version number of the software.....	20
<b>Deactivate All Items</b> .....	19
<b>Deactivate All Sales Items</b> .....	19
<b>Deactivate All Stock Items</b> .....	19
DenView500 icon.....	12
<b>Description</b> .....	21
<b>Displayed Items</b> .....	24
<b>EPROM version</b> .....	7
<b>Exit</b> .....	16
<b>Export</b> button .....	39
<b>Export Text File</b> button.....	47
export V6 Polling data manually .....	39
export V7 Polling data manually .....	46
Exporting Master Items.....	33, 41
<b>Exporting Version 6 Report Data</b> .....	38
Exporting Version 7 Report Data .....	45
File Menu.....	14, 16
<b>General</b> tab .....	38
<b>Getting Started</b> .....	10
<b>Help</b> .....	20
About .....	20
Help Menu .....	20
<b>Import</b> .....	16
<b>Import Sales Data</b> .....	17, 40
Importing new data .....	15
<b>Index</b> .....	49
Installation Instructions .....	10
<b>Introduction</b> .....	9
<b>Item Listing</b> .....	34
<b>Item Units</b> .....	22
Item Usage Report.....	15, 24
Items Stock Tab.....	26
License Agreement\ screen .....	11
<b>Limitation of Liability</b> .....	5
<b>Linked Item</b> .....	23, 24
Linked Items .....	14, 17, 21, 22, 23, 24, 29
Linked Items <b>Item 1 - 5</b> .....	21
<b>Linked Items</b> tab.....	14, 22, 24
Linked Items Tab .....	22
<b>Listing Export</b> button.....	36
<b>Machine Identification</b> .....	13
<b>Machine Identification</b> number.....	13
<b>Machine List</b> .....	41
<b>Machine List</b> button .....	41
<b>Maintain</b> button .....	42
<b>make and model</b> .....	7
manual exports .....	46
Master and Linked Items .....	17

Master file .....	14
Master Items .....	14, 21
Active Preference .....	21
Master Items list .....	33
Master Items tab .....	14, 21, 25
Master Options Menu .....	19
<b>New (set of Master Items tables)</b> .....	16
Only Show Active Items option .....	21
<b>Open (previously created Master Items tables)</b> .....	16
Overview .....	9
<b>Partial Qty Used</b> .....	24
<b>Physical Form</b> .....	17
<b>Please Select Master File</b> .....	14
PLU/UPC name .....	43
PLU/UPC number .....	43
PLU/UPC price .....	43
<b>PLUCode</b> .....	21
PLU-Master Items .....	21
<b>Polled Reports grid</b> .....	47
Polling .....	8
Preferences button .....	33
Quantity Sold .....	22
<b>Quantity Sold-Items</b> .....	23, 24
<b>Quantity Sold-Partial</b> .....	22
<b>Quantity Sold-Total</b> .....	22
<b>Quantity Sold-Units</b> .....	23, 24
<b>Quantity Sold-Whole</b> .....	22
Quick Maintenance .....	15
Quick Setup .....	14
<b>Raw Purchasing Unit</b> .....	22, 24
Raw Purchasing Units .....	9, 14, 22, 24
<b>Receiving Technical Support</b> .....	7
<b>Recommended System Additions</b> .....	8
Registration Information\ screen .....	10
<b>Release Code</b> .....	13, 18
release code entry screen .....	12
Release Code Screen .....	13
<b>Report File Export Format area</b> .....	46
Report File Export Type .....	38
<b>Reports button</b> .....	46
<b>Reset All Sales Data</b> .....	17
Reset All Sales Data option .....	15
<b>Reset All Stock Data</b> .....	17
Reset of All Sales Data .....	22
Resetting totals .....	15
<b>RETURN POLICY</b> .....	4
Sales Data menu .....	15, 30
Sales Data Menu .....	17
<b>Sales Report</b> .....	17
<b>Sales Unit(s)</b> .....	23
Sample Screens .....	28
Sam4s Options tab .....	34
Setup Menu .....	18
Activation option .....	18
Sharp Options tab .....	34
<b>Show on Report</b> .....	22, 23
Show On Report option .....	24
<b>Software License</b> .....	6
Software Prompts .....	30
<b>Software Warranty</b> .....	6
<b>Stock Partial Qty Used</b> .....	25
<b>Stock Quantity-Partial</b> .....	23
<b>Stock Quantity-Total</b> .....	23
<b>Stock Quantity-Whole</b> .....	23
<b>Stock Total Qty Used</b> .....	25

<b>Stock Whole Qty Used</b> .....	<b>25</b>
<i>System Recommendations</i> .....	8
<i>System Requirements</i> .....	8
TEC Options tab .....	<b>34</b>
<b>Term of License</b> .....	5
<b>Terminology</b> .....	<b>16</b>
To Reset All Sales Data .....	15
Toolbars .....	<b>29</b>
<b>Total Qty Used</b> .....	<b>24</b>
<b>Transferring Data from Polling</b> .....	<b>33</b>
<b>Update Release Code</b> button .....	13
Version 6 Items .....	<b>33</b>
Version 6 Reports .....	<b>38</b>
Version 7 Items .....	<b>41</b>
Version 7 Reports .....	<b>45</b>
<b>version and serial numbers</b> .....	7
Welcome screen .....	10
<b>Whole Qty Used</b> .....	<b>24</b>

