

**AAMA/WDMA/CSA 101/IS.2/A440-08
TEST REPORT**

Rendered to:

EAGLE WINDOW & DOOR, INC.

**SERIES/MODEL: Monumental Double Hung 40100
PRODUCT TYPE: Aluminum Clad Wood Double Hung**

| Title | Summary of Results |
|--|---|
| Primary Product Designator | LC-PG35-H 1219 x 3048 (48 x 120) |
| Design Pressure | 1680 Pa (35.0 psf) |
| Operating Force (in motion) | 150 N (33.7 lbf) |
| Air Infiltration | 0.21 L/s/m ² (0.04 cfm/ft ²) |
| Water Penetration Resistance Test Pressure | 400 Pa (8.25 psf) |
| Uniform Load Structural Test Pressure | ±2520 Pa (52.5 psf) |
| Forced Entry Resistance | Grade |

Test Completion Date: 05/31/07

Reference must be made to Report No. 73120.02-201-44, dated 12/05/08 for complete test specimen description and data.

AAMA/WDMA/CSA 101/I.S.2/A440-08 TEST REPORT

Rendered to:

EAGLE WINDOW & DOOR, INC.
2045 Kerper Boulevard
Dubuque, Iowa 52001

Report No.: 73120.02-201-44
Test Dates: 05/31/07
Original Report Date: 06/29/07
Revised Report Date: 12/05/08
Expiration Date: 05/31/11

Project Summary: Architectural Testing, Inc. was contracted by Eagle Window & Door, Inc. perform testing on a Series/Model Monumental Double Hung 40100, Aluminum Clad Wood Double Hung window. The sample tested successfully met the performance requirements for a LC-PG35 1219 x 3048 (48 x 120) rating. Test specimen description and results are reported herein.

Test Specification: The test specimen was evaluated in accordance with AAMA/WDMA/CSA 101/I.S.2/A440-08, *NAFS - North American Fenestration Standard/Specification for Windows, Doors, and Skylights*.

Test Specimen Description:

Series/Model: Monumental Double Hung 40100

Product Type: Aluminum Clad Wood Double Hung window

Overall Size: 1219 mm (48") wide by 3048 mm (120") high

Bottom Sash Size: 1124 mm (44-1/4") wide by 1534 mm (60-3/8") high

Top Sash Size: 1124 mm (44-1/4") wide by 1534 mm (60-3/8") high

Screen Size: 1146 mm (45-1/8") wide by 2997 mm (118") high

Daylight Opening Size: 1035 mm (40-3/4") wide by 1397 mm (55") high

Overall Area: 3.17 m² (40 ft²)

Test Specimen Description: (Continued)

Finish: Exterior cladding was painted white, interior wood was natural.

Frame Construction: Head frame corners were coped, butted, sealed with silicone, and secured with three 11 mm (7/16") by 44 mm (1-3/4") long staples per corner. Sill frame corners were coped, butted, sealed with a corner gasket and silicone, and secured with two #8 by 44 mm (1-3/4") screws. Aluminum cladding was slip-fit over wood members, miter-cut at head corners and secured with a corner key and two #6 by 11 mm (7/16") screws per corner. Sill corners were coped, butted sealed with a corner gasket and silicone, and secured with a #7 by 32 mm (1-1/4") screw and a #6 by 11 mm (7/16") screw.

Sash Construction: The lower sash and upper sash, top rail and stiles consisted of molded pine sections, the lower sash meeting rail was LVL. Upper sash corners were mortise-and-tenon construction and secured with glue and one 5 mm (3/16") by 38 mm (1-1/2") staple per corner. Aluminum cladding was slip-fit over wood members, upper sash corners were miter-cut, sealed with butyl and secured with a corner key and two #4 by 13 mm (1/2") screws per corner. Lower sash corners were mortise-and-tenon construction; meeting rail corners were secured with glue and two 5 mm (3/16") by 38 mm (1-1/2") staples per corner; bottom rail corners were secured with glue and one #8 by 57 mm (2-1/4") screw per corner. Aluminum cladding was slip-fit over wood members, corners were coped, butted and sealed with butyl.

Screen Construction: The screen was comprised of roll-formed aluminum with plastic corner keys. Fiberglass screen cloth was attached with a vinyl spline.

Glazing Details: The sash were glazed with nominal 19 mm (3/4") insulating glass comprised of two nominal 4 mm (5/32") annealed sheets separated by a desiccant-filled stainless steel spacer system. The glass was set from the interior against InstantGlaze II silicone sealant and secured with wood glazing beads set on the interior, secured with 25 mm (1") brad nails spaced 152 mm to 203 mm (6" to 8") on center.

Weatherstripping:

| <u>Description</u> | <u>Quantity</u> | <u>Location</u> |
|--------------------|-----------------|---|
| Hollow vinyl bulb | 1 Row | Lower sash bottom rail; upper sash meeting rail |
| Foam filled bulb | 1 Row | Head jamb and side jambs |
| Wool pile | 2 | Side jambs at check rail |

Test Specimen Description: (Continued)

Hardware:

| <u>Description</u> | <u>Quantity</u> | <u>Location</u> |
|--|-----------------|------------------------------|
| Vinyl jamb liner with block-and-tackle balance | 2 | Jamb pockets |
| Sweep locks and keepers with integrated tilt latches | 2 | 203 mm (8") from sash corner |
| Stainless steel tilt pins | 4 | Bottom corners of stiles |

Installation: The window was installed within a wood test frame with installation clips that were secured to the window with two #8 by 16 mm (5/8") screws and to the buck on the interior and exterior with two #8 by 38 mm (1-1/2") screws that were spaced 610 mm (24") from corners on side jambs, with 51 mm (2") roofing nails 203 mm (8") on center through flange. The unit was sealed to the buck with silicone.

Test Results: The temperature during testing was 21°C (70°F). The results are tabulated as follows:

| <u>Paragraph</u> | <u>Title of Test - Test Method</u> | <u>Results</u> | <u>Allowed</u> |
|------------------|---------------------------------------|--|--|
| 5.3.1 | Operating Force per ASTM E 2068 | | |
| | Open | | |
| | Initiate motion | 145 N (32.7 lbf) | -- |
| | Maintain motion | 133 N (30.0 lbf) | 180 N (40.0 lbf) |
| | Close | | |
| | Initiate motion | 71 N (16.0 lbf) | -- |
| | Maintain motion | 150 N (33.7 lbf) | 180 N (40.0 lbf) |
| | Latches | | |
| | Lock | 13 N (3.0 lbf) | 100 N (22.5 lbf) |
| | Unlock | 13 N (3.0 lbf) | 100 N (22.5 lbf) |
| 5.3.2.1 | Air Leakage Resistance per ASTM E 283 | | |
| | 75 Pa (1.6 psf) | 0.35 L/s/m ² (0.07 cfm/ft ²) | 1.5 L/s/m ² (0.3 cfm/ft ² max.) |
| | 300 Pa (6.2 psf) | 0.97 L/s/m ² (0.19 cfm/ft ²) | -- -- |

Note #1: The tested specimen meets (or exceeds) the performance levels specified in AAMA/WDMA/CSA 101/I.S.2/A440-08 for air leakage resistance.

Test Results: (Continued)

| <u>Paragraph</u> | <u>Title of Test - Test Method</u> | <u>Results</u> | <u>Allowed</u> |
|--|---|----------------|-----------------|
| 5.3.3.2 | Water Penetration Resistance per ASTM E 547 and E 331 | | See Note #2 |
| 5.3.4.2 | Uniform Load Deflection per ASTM E 330 | | See Note #2 |
| 5.3.4.3 | Uniform Load Structural per ASTM E 330 | | See Note #2 |
| <i>Note #2: The client opted to start at a pressure higher than the minimum required. Those results are listed under "Optional Performance".</i> | | | |
| 5.3.5 | Forced Entry Resistance per ASTM F 588 Type: A | Grade: 10 | |
| | Disassembly Test | No entry | No entry |
| | Tests A1 through A5; A7 | No entry | No entry |
| | Sash/Panel Manipulation Test | No entry | No entry |
| | Lock Hardware Manipulation Test | No entry | No entry |
| 5.3.6.3 | Deglazing Test | | |
| | In operating direction - 320 N (70 lbf) | | |
| | Upper sash-top rail | 1.5 mm (0.06") | 11.4 mm (0.45") |
| | Upper sash-meeting rail | 1.0 mm (0.04") | 11.4 mm (0.45") |
| | Lower sash-meeting rail | 1.3 mm (0.05") | 11.4 mm (0.45") |
| | Lower sash-bottom rail | 1.3 mm (0.05") | 11.4 mm (0.45") |
| | In remaining direction - 230 N (50 lbf) | | |
| | Upper sash-left stile | 0.8 mm (0.03") | 11.4 mm (0.45") |
| | Upper sash-right stile | 1.0 mm (0.04") | 11.4 mm (0.45") |
| | Lower sash-left stile | 0.8 mm (0.03") | 11.4 mm (0.45") |
| | Lower sash-right stile | 0.8 mm (0.03") | 11.4 mm (0.45") |

Optional Performance

| | | | |
|---------|--|------------|------------|
| 4.3.2.1 | Water Penetration Resistance per ASTM E 547 and E 331 (with and without insect screen) 400 Pa (8.25 psf) | No leakage | No leakage |
|---------|--|------------|------------|

Test Results: (Continued)

| <u>Paragraph</u> | <u>Title of Test - Test Method</u> | <u>Results</u> | <u>Allowed</u> |
|------------------|------------------------------------|----------------|----------------|
|------------------|------------------------------------|----------------|----------------|

Optional Performance (Continued)

| | | | |
|---------|--|-----------------|-------------|
| 4.3.2.1 | Uniform Load Deflection per ASTM E 330 (Positive deflections were taken on the meeting rail; negative deflections were taken on the sash stile) (Loads were held for 60 seconds) | | |
| | 1680 Pa (35.0 psf) (positive) | 5.01 mm (0.20") | See Note #3 |
| | 1680 Pa (35.0 psf) (negative) | 21.8 mm (0.86") | See Note #3 |

***Note #3:** The deflections reported are not limited by AAMA/WDMA/CSA 101/I.S.2/A440-08 for this product designation. The deflection data is recorded in this report for special code compliance and information only.*

| | | | |
|---------|---|----------------|---------------------|
| 4.3.2.1 | Uniform Load Structural per ASTM E 330 (Permanent sets were taken on the sash stile) (Loads were held for 10 seconds) | | |
| | 2520 Pa (52.5 psf) (positive) | 2.3 mm (0.09") | 6.1 mm (0.24") max. |
| | 2520 Pa (52.5 psf) (negative) | 1.3 mm (0.05") | 6.1 mm (0.24") max. |

Tape and film were used to seal against air leakage during structural testing. In our opinion, the tape and film did not influence the results of the test.

Drawing Reference: The test specimen drawings have been reviewed by Architectural Testing and are representative of the test specimen reported herein.

List of Official Observers:

| <u>Name</u> | <u>Company</u> |
|----------------------|-----------------------------|
| Thad McKinley | Eagle Window & Door, Inc. |
| Joe Cogan | Eagle Window & Door, Inc. |
| Karl A. Lips-Eakins | Architectural Testing, Inc. |
| Eric J. Schoenthaler | Architectural Testing, Inc. |

Detailed drawings, data sheets, representative samples of test specimens, a copy of this report, or other pertinent project documentation will be retained by Architectural Testing, Inc. for a period of four years from the original test date. At the end of this retention period, such materials shall be discarded without notice and the service life of this report will expire.


Results obtained are tested values and were secured by using the designated test methods. No conclusions of any kind regarding the adequacy or inadequacy of the glass in the test specimen can be made. This report does not constitute certification of this product nor an opinion or endorsement by this laboratory. It is the exclusive property of the client so named herein and relates only to the specimens tested. This report may not be reproduced, except in full, without the written approval of Architectural Testing, Inc.

For ARCHITECTURAL TESTING, INC.



Digitally Signed by: Eric Schoenthaler

Eric J. Schoenthaler
Project Manager



Digitally Signed by: Daniel A. Johnson

Daniel A. Johnson
Director - Regional Operations

EJS:mb

Attachments (pages): This report is complete only when all attachments listed are included.

- Appendix-A: Alteration Addendum (1)
- Appendix B: WDMA Submittal Forms (2)
- Appendix-B: Drawings (41)

Revision Log

| <u>Rev. #</u> | <u>Date</u> | <u>Page(s)</u> | <u>Revision(s)</u> |
|---------------|-------------|----------------|--|
| 0 | 06/27/07 | N/A | Original report issue. Report and drawings forwarded to AMS for Hallmark Certification. |
| 1 | 07/06/07 | 2 | Corrected glazing sealant in glazing paragraph. Report and drawings forwarded to AMS for Hallmark Certification. |
| 2 | 12/05/08 | All | Test Report results conducted prior to 2008 standard being published; report is as compared to 2008 standard. Report and drawings forwarded to AMS for Hallmark Certification. |

Appendix A:
Alteration Addendum

Note: No alterations were required,

Appendix B:
WDMA Submittal Forms



WDMA HALLMARK CERTIFICATION PROGRAM REPORT SUBMISSION FORM

THIS FORM IS TO BE COMPLETED BY THE MANUFACTURER AND SUBMITTED TO AMS PRIOR TO OR ALONG WITH SUBMISSION OF EACH NEW OR REVISED TEST REPORT FOR CERTIFICATION TO THE HALLMARK PROGRAM. ANY QUESTIONS PLEASE CONTACT AMS AT 315-646-2234 OR staff@amscert.com.

Manufacturer: Eagle Window and Door, Inc.

Contact: Todd Bergstrom

Plant Location(s):
(list all plants where product is made)
2045 Kerper Blvd. Dubuque, IA 52004-1072

Phone: 563-556-2270

Test Report #: 73120.02-201-44-R1

Email: tbergstrom@eaglewindow.com

Product Relationship:

Extension of currently certified product? yes no n/a Recertification New (check one)

If yes, what CCL # ? 099-H-684.01

Difference from Certified Product: Report re-written to A440.08 standard.

Is this a Gateway Test ? yes no n/a

Does this report require a Gateway Report # ? yes no n/a Report #: _____

Impact Report:

If this is not an impact report check here:

AWS Report # _____

Test Plan # ? yes no n/a _____

Installation Instructions submitted ? yes no n/a

Certification to Florida:

If this will not be submitted to Florida check here:

AMS to Input to Database yes no n/a

Manufacturer to input yes no n/a



WDMA HALLMARK CERTIFICATION PROGRAM REPORT SUBMISSION FORM

Product Name: T7 Talon Monumental Double Hung Vent
(as to be listed on CCL)

Product Type: Hung Window – Vertical Sliding

Additional Manufacturer ID #: _____

n/a

| <u>Hallmark CCL</u> | <u>Standard</u> | <u>Rating</u> |
|-------------------------------------|---------------------------------|---------------------|
| <input type="checkbox"/> | ANSI/AAMA/NWWDA 101/I.S. 2 97 | _____ |
| <input type="checkbox"/> | 101/I.S.2/NAFS-02 | _____ |
| <input type="checkbox"/> | AAMA/WDMA/CSA/101/I.S.2/A440-05 | _____ |
| <input checked="" type="checkbox"/> | AAMA/WDMA/CSA/101/I.S.2/A440-08 | LC-PG35-H +35 / -35 |
| <input type="checkbox"/> | ASTM E 1996 99 / E1886-97 | _____ |
| <input type="checkbox"/> | ASTM E 1996 01 / E1886-97 | _____ |
| <input type="checkbox"/> | ASTM E 1996 02 / E1886-02 | _____ |
| <input type="checkbox"/> | ASTM E 1996 03 / E1886-02 | _____ |
| <input type="checkbox"/> | ASTM E 1996 04 / E1886-04 | _____ |
| <input type="checkbox"/> | ASTM E 1996 05 / E1886-05 | _____ |
| <input type="checkbox"/> | ASTM E330 02 | _____ |
| <input type="checkbox"/> | ANSI A250.13-03 | _____ |
| <input type="checkbox"/> | TAS 201-94 | _____ |
| <input type="checkbox"/> | TAS 202-94 | _____ |
| <input type="checkbox"/> | TAS 203-94 | _____ |
| <input type="checkbox"/> | Other: | _____ |

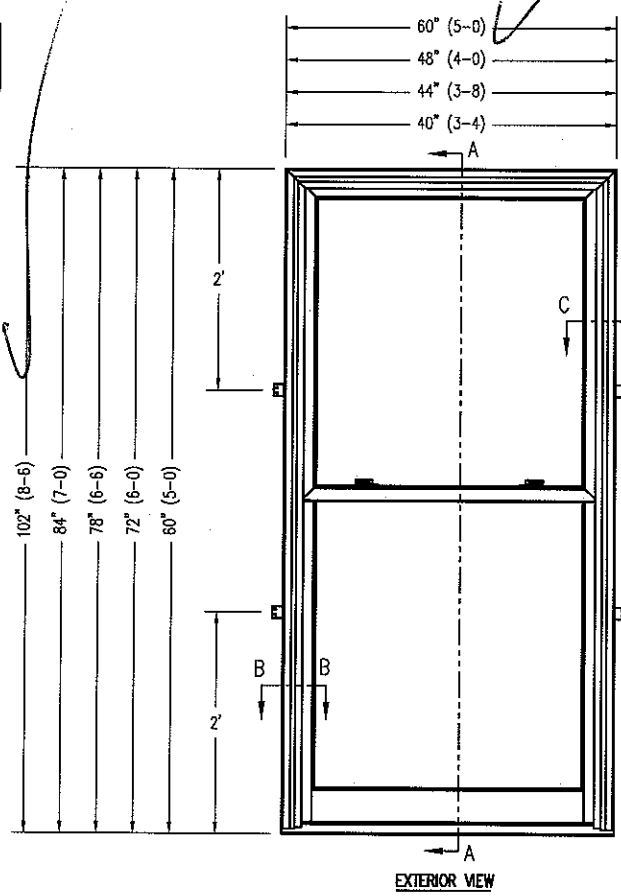
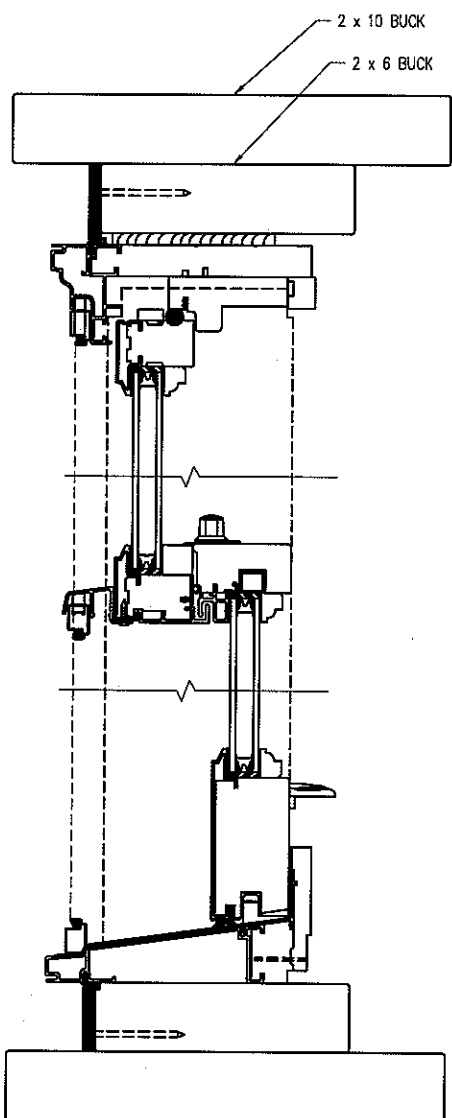
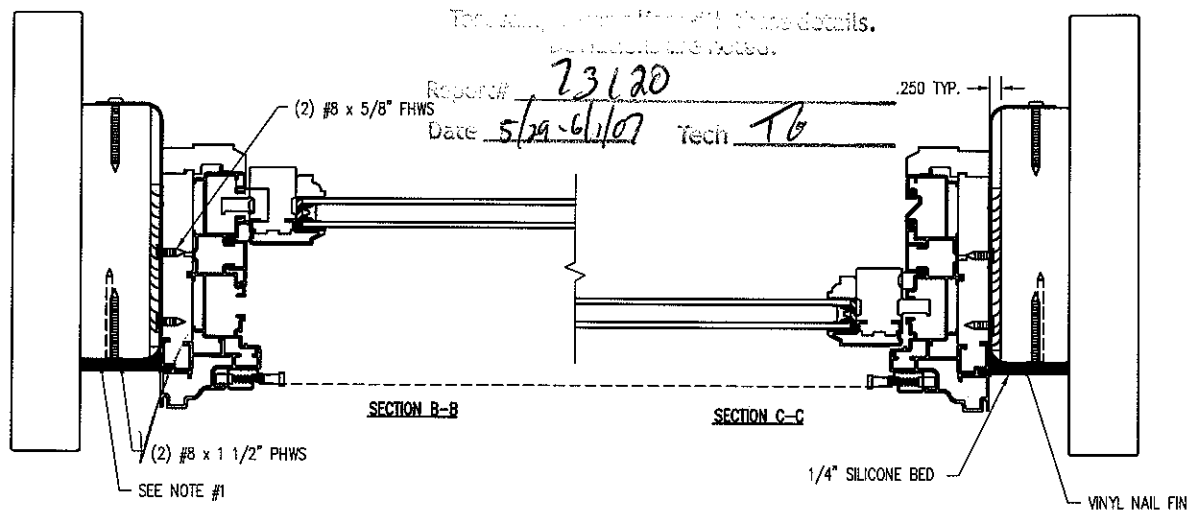
Appendix C

Drawings

1. (36) 2" ROOFING NAILS THROUGH NAIL FIN INTO BUCK SPACES 3 1/2" FROM EACH END AND 6" ON CENTER THEREAFTER.

Technical Drawing
 Title: *Window Installation Detail*
 Top and Bottom Views of the details.
 Dimensions are noted.

Report# *23120*
 Date *5/29-6/1/07* Tech *T6*



THIS DRAWING AND ITS CONTENTS ARE THE PROPERTY OF EAGLE WINDOW & DOOR. NO USE OR REPRODUCTION OF THE CONTENTS OF THIS DOCUMENT IS PERMITTED WITHOUT THE EXPRESS WRITTEN PERMISSION OF EAGLE WINDOW & DOOR.

TITLE: *CDHV*
INSTALLATION DETAIL

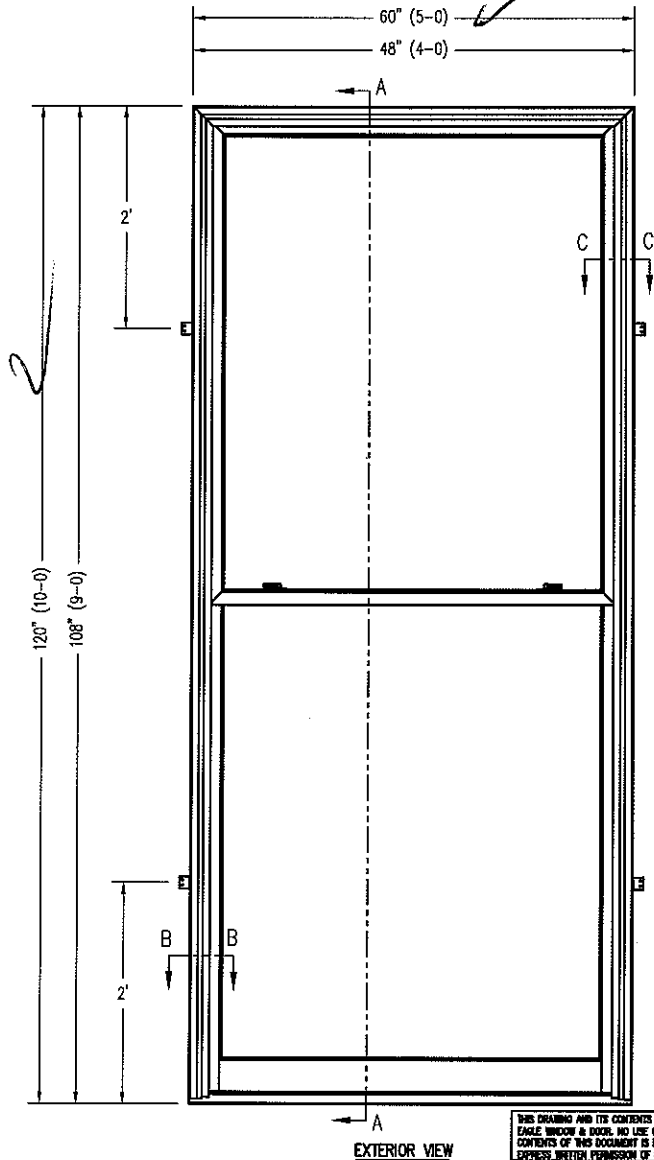
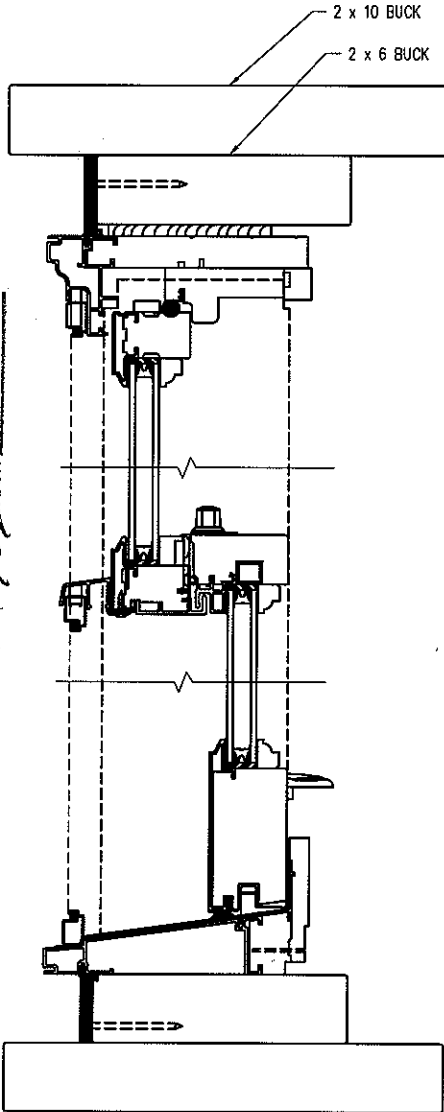
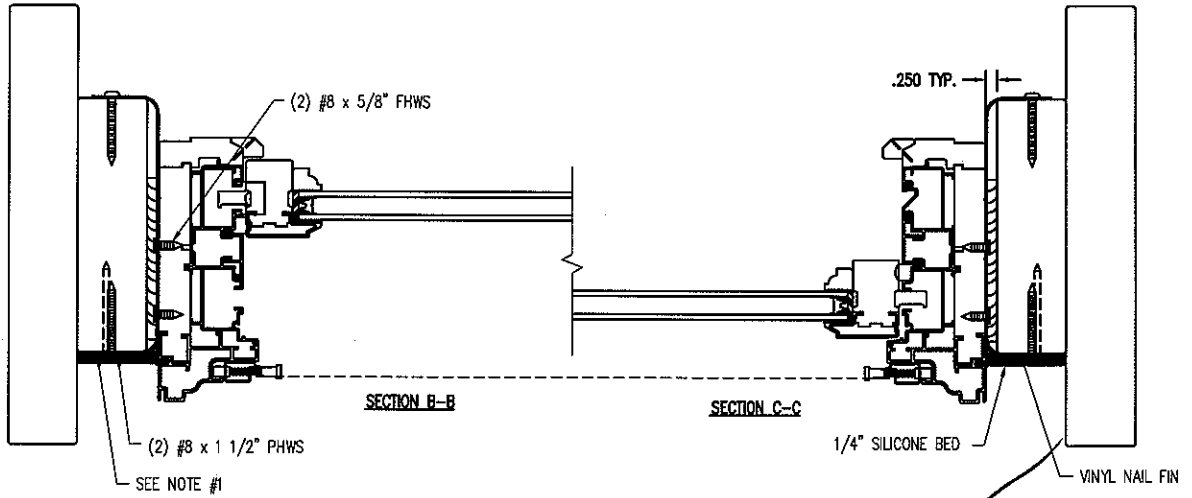
FINISH:

MATL:

| | | | |
|-------|---------|--------|----------|
| DFT: | KJS | SCALE: | 1=4 |
| DCN: | 0881 | DRWG: | 0535 |
| DATE: | 3/19/07 | C | 01 OF 02 |

| NO | DESCRIPTION | DFT | DOC | DATE |
|----|-------------|-----|-----|------|
| | | | | |

1. (36) 2" ROOFING NAILS THROUGH NAIL FIN INTO BUCK SPACES 3 1/2" FROM EACH END AND 6" ON CENTER THEREAFTER.



Architectural Testing

Test sample completed under these conditions. Deviations are noted.

Report# 73120

Date 5/29/10 Tech TC

THIS DRAWING AND ITS CONTENTS ARE THE PROPERTY OF EAGLE WINDOW & DOOR. NO USE OR REPRODUCTION OF THE CONTENTS OF THIS DOCUMENT IS PERMITTED WITHOUT THE EXPRESS WRITTEN PERMISSION OF EAGLE WINDOW & DOOR.

TITLE: CMSHV
INSTALLATION DETAIL

FINISH:

WALL:

DFT: KJS SCALE: 1=4

DCN: 0881 DRWG: 0535

DATE: 3/19/07 C 02

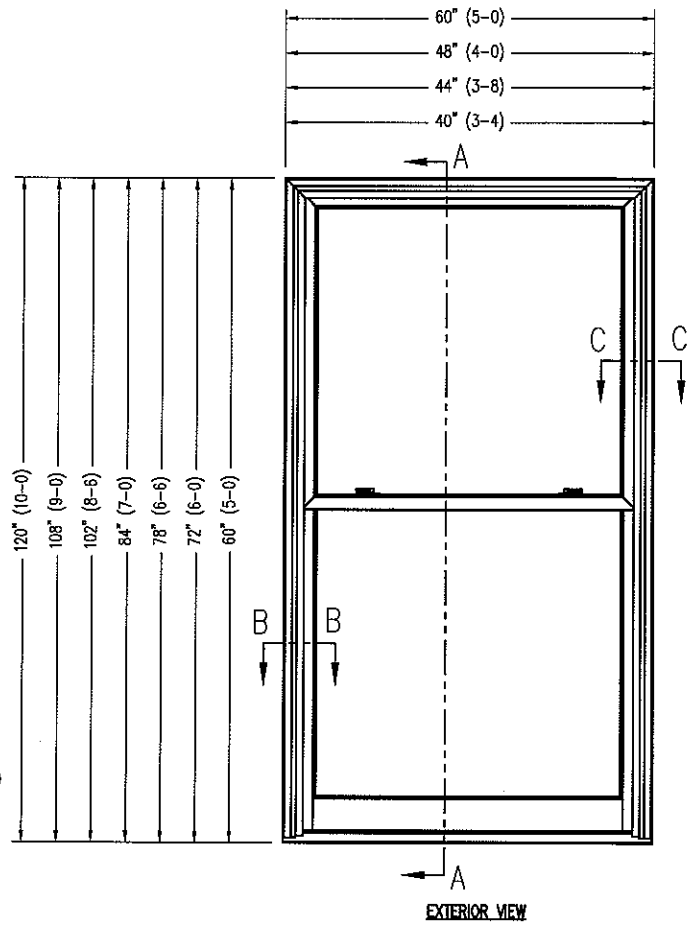
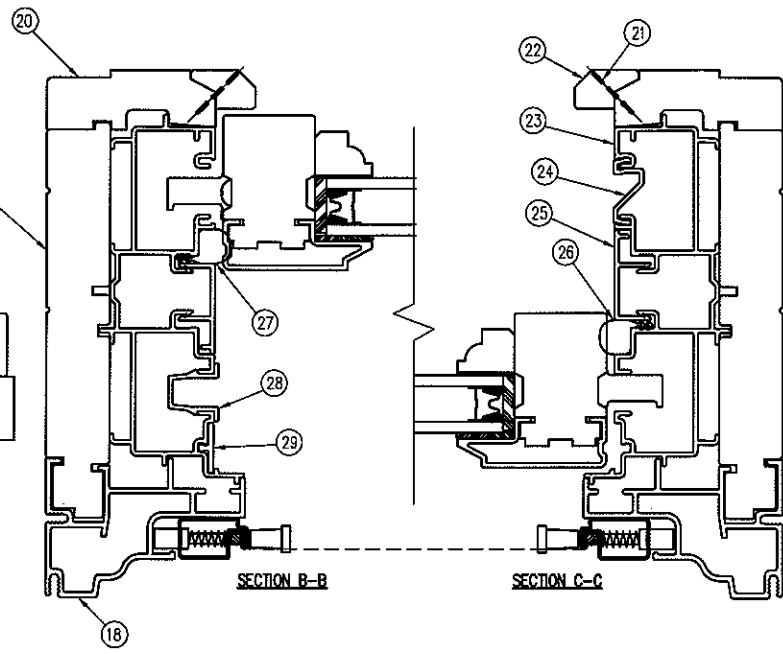
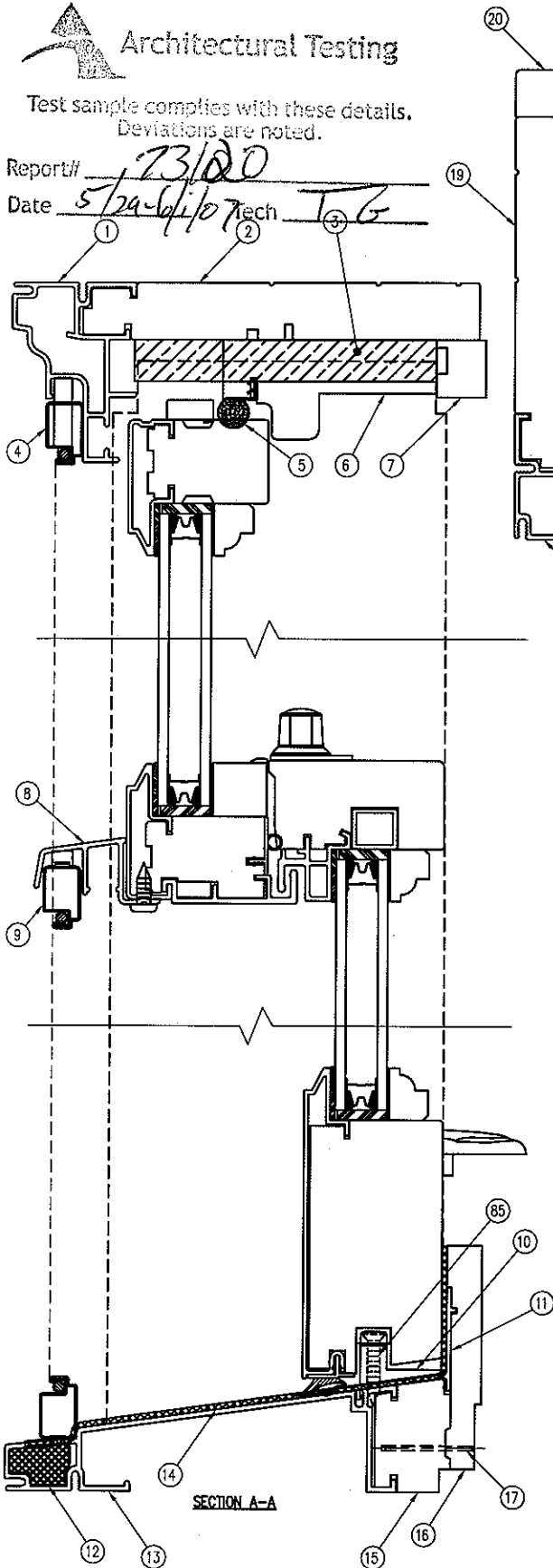
| NO | DESCRIPTION | DFT | DOC | DATE |
|----|-------------|-----|-----|------|
| | | | | |



Architectural Testing

Test sample complies with these details.
Deviations are noted.

Report# 73100
Date 5/29/07 Tech TG



THIS DRAWING AND ITS CONTENTS ARE THE PROPERTY OF
EAGLE WINDOW & DOOR. NO USE OR REPRODUCTION OF THE
CONTENTS OF THIS DOCUMENT IS PERMITTED WITHOUT THE
EXPRESS WRITTEN PERMISSION OF EAGLE WINDOW & DOOR.

TITLE: 07 CDHV
UNIT ASSEMBLY

FINISH:

MATERIAL:

DFT: KJS SCALE: 1=2
DCN: 0881 DRWR: 0534
DATE: 3/19/07 C 01 OF 12

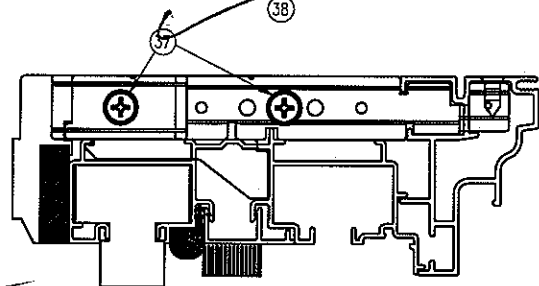
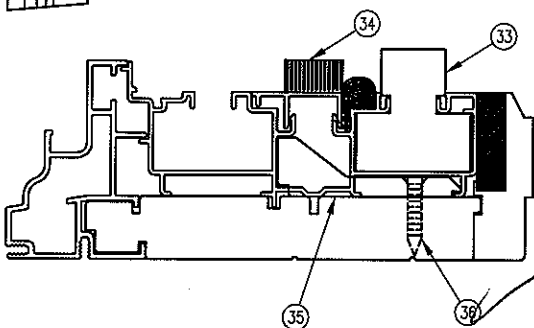
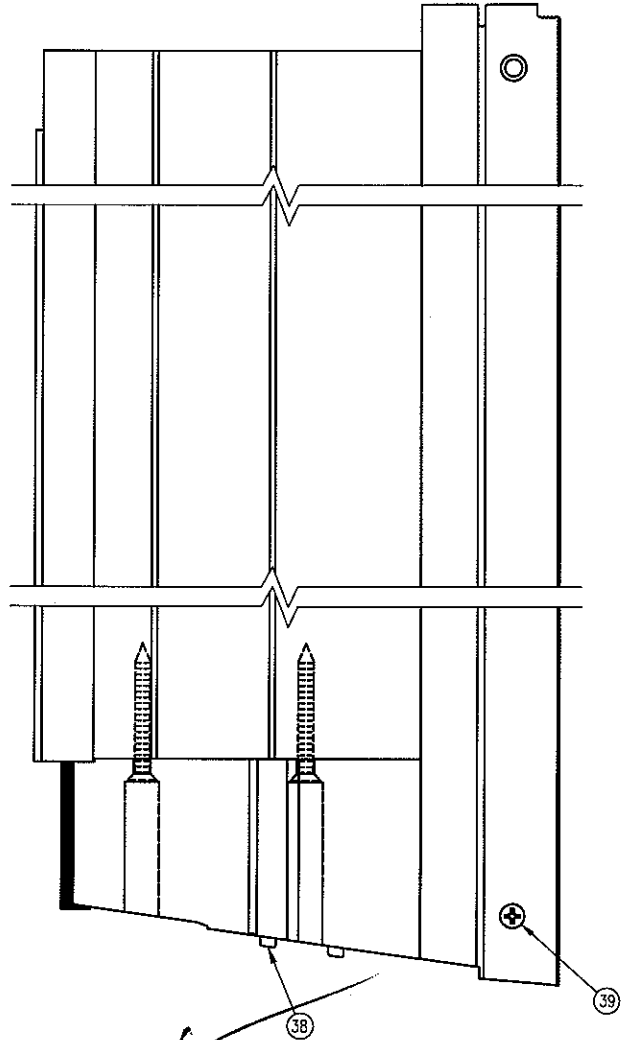
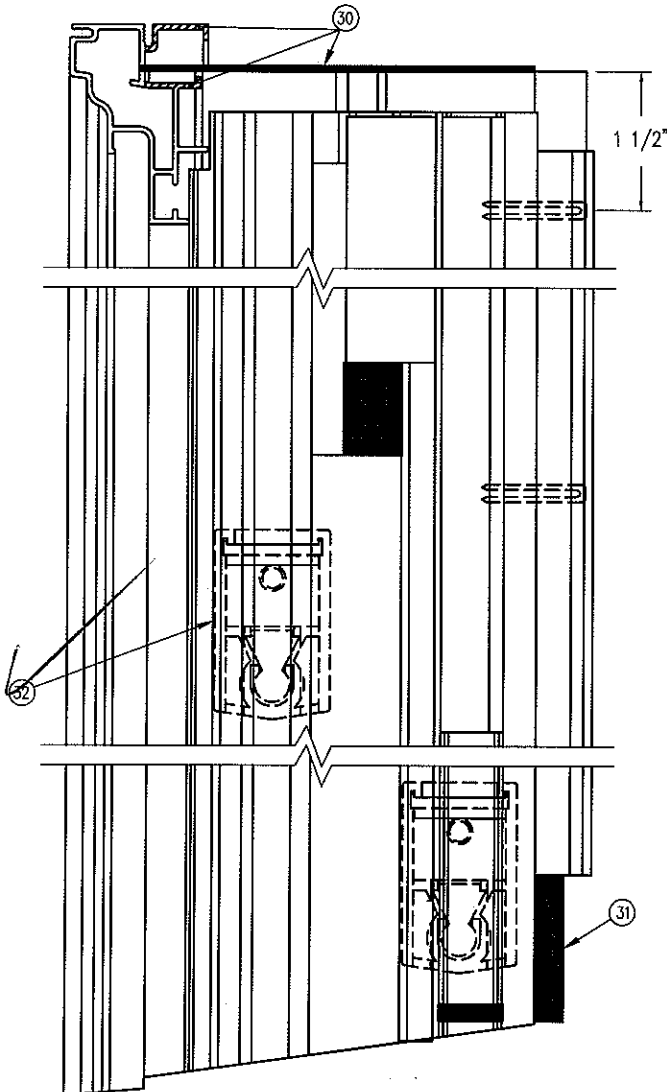
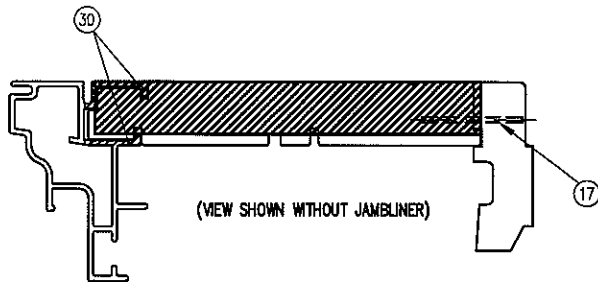
| NOI | DESCRIPTION | DFT | DOC | DATE |
|-----|-------------|-----|-----|------|
| | | | | |



Architectural Testing

Test sample complies with these details.
Deviations are noted.

Report# 73170
Date 2/29-6/10 Tech 16



THIS DRAWING AND ITS CONTENTS ARE THE PROPERTY OF EAGLE WINDOW & DOOR. NO USE OR REPRODUCTION OF THE CONTENTS OF THIS DOCUMENT IS PERMITTED WITHOUT THE EXPRESS WRITTEN PERMISSION OF EAGLE WINDOW & DOOR.

TITLE: CDHV
UNIT ASSEMBLY
FINISH:
MATERIAL:

DFT: KJS SCALE: 1=2
DCN: 0881 DRWG: 0834
DATE: 3/19/07 C 02

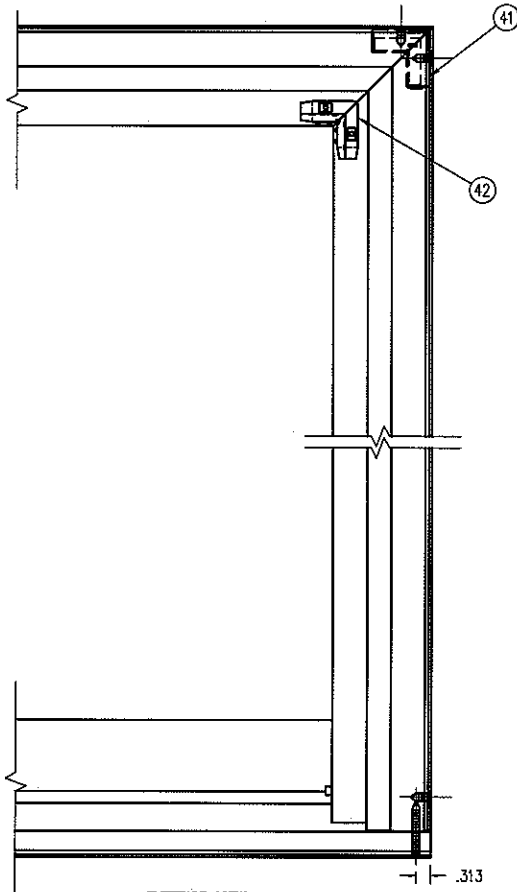
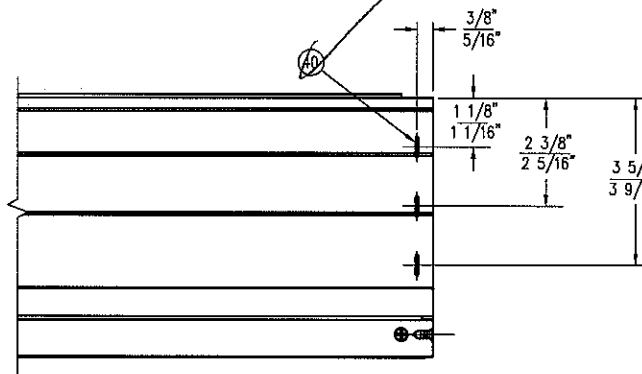
| NO. | DESCRIPTION | DFT | DOC | DATE |
|-----|-------------|-----|-----|------|
| | | | | |



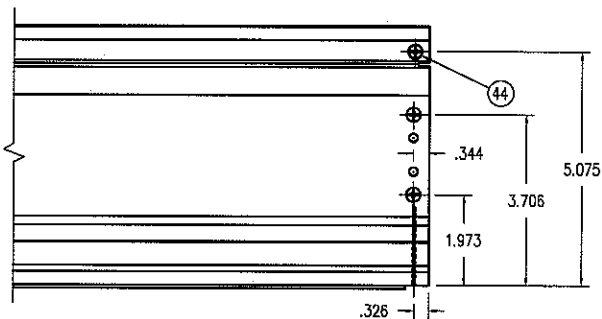
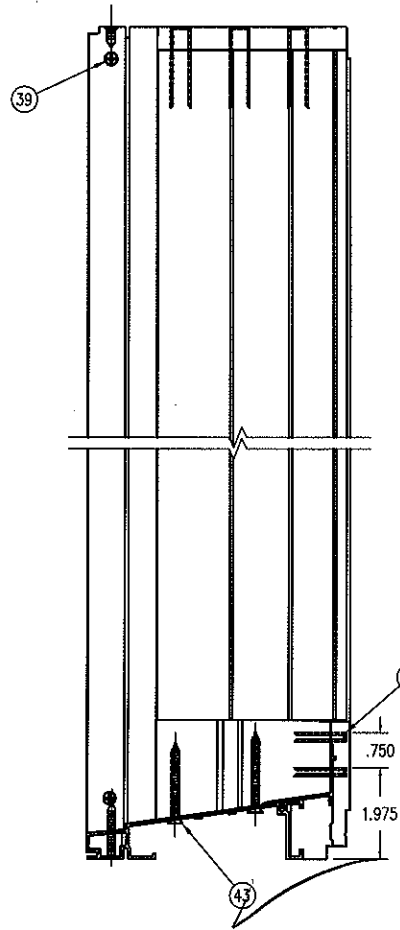
Architectural Testing

Test sample complies with these details.
Deviations are noted.

Report# **13120**
Date **5/22-6/10/07** Tech **TG**



EXTERIOR VIEW



THIS DRAWING AND ITS CONTENTS ARE THE PROPERTY OF EAGLE WINDOW & DOOR. NO USE OR REPRODUCTION OF THE CONTENTS OF THIS DOCUMENT IS PERMITTED WITHOUT THE EXPRESS WRITTEN PERMISSION OF EAGLE WINDOW & DOOR.

| | | | |
|---------|---------------|--------|------|
| TITLE: | CDRV | | |
| | UNIT ASSEMBLY | | |
| FINISH: | | | |
| MATL: | | | |
| DFT: | KJS | SCALE: | 1=4 |
| DCN: | 0881 | DRWG: | 0534 |
| DATE: | 3/19/07 | C | 03 |

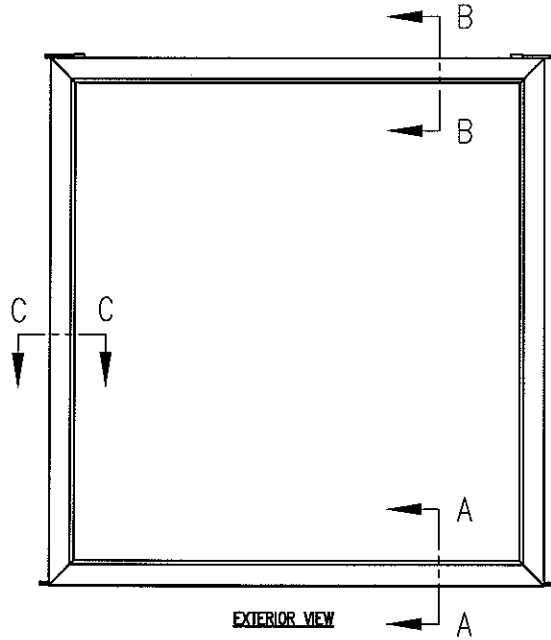
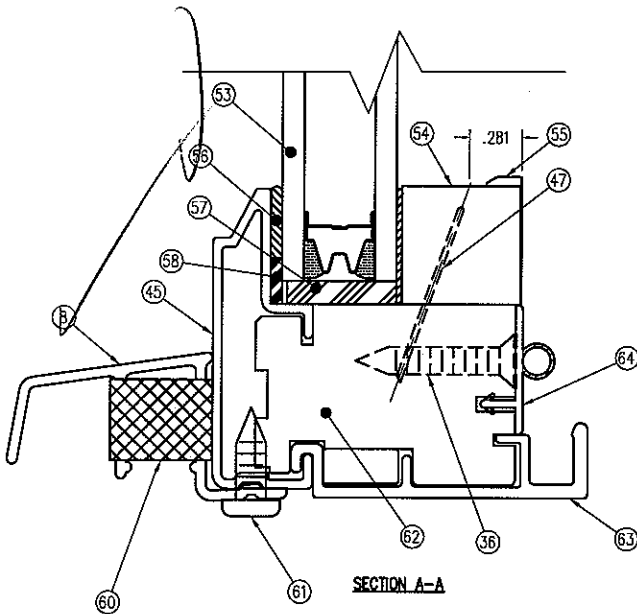
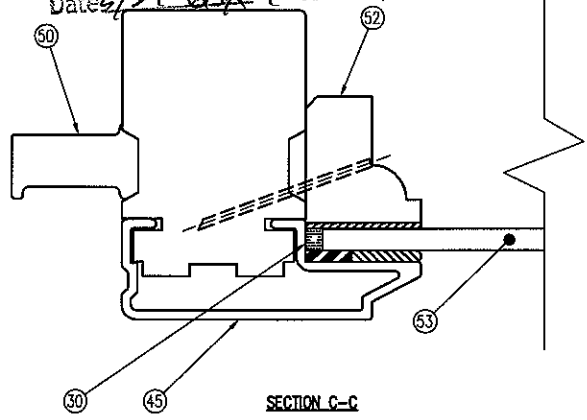
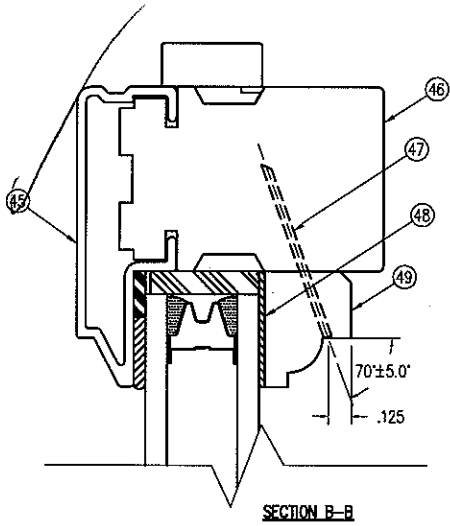
| NOI | DESCRIPTION | IDFT | DOC | DATE |
|-----|-------------|------|-----|------|
| | | | | |



Architectural Testing

Test sample complies with these details.
Deviations are noted.

Report# 73120
Date 6/29-07 Tech JG



THIS DRAWING AND ITS CONTENTS ARE THE PROPERTY OF
EAGLE WINDOW & DOOR. NO USE OR REPRODUCTION OF THE
CONTENTS OF THIS DOCUMENT IS PERMITTED WITHOUT THE
EXPRESS WRITTEN PERMISSION OF EAGLE WINDOW & DOOR.

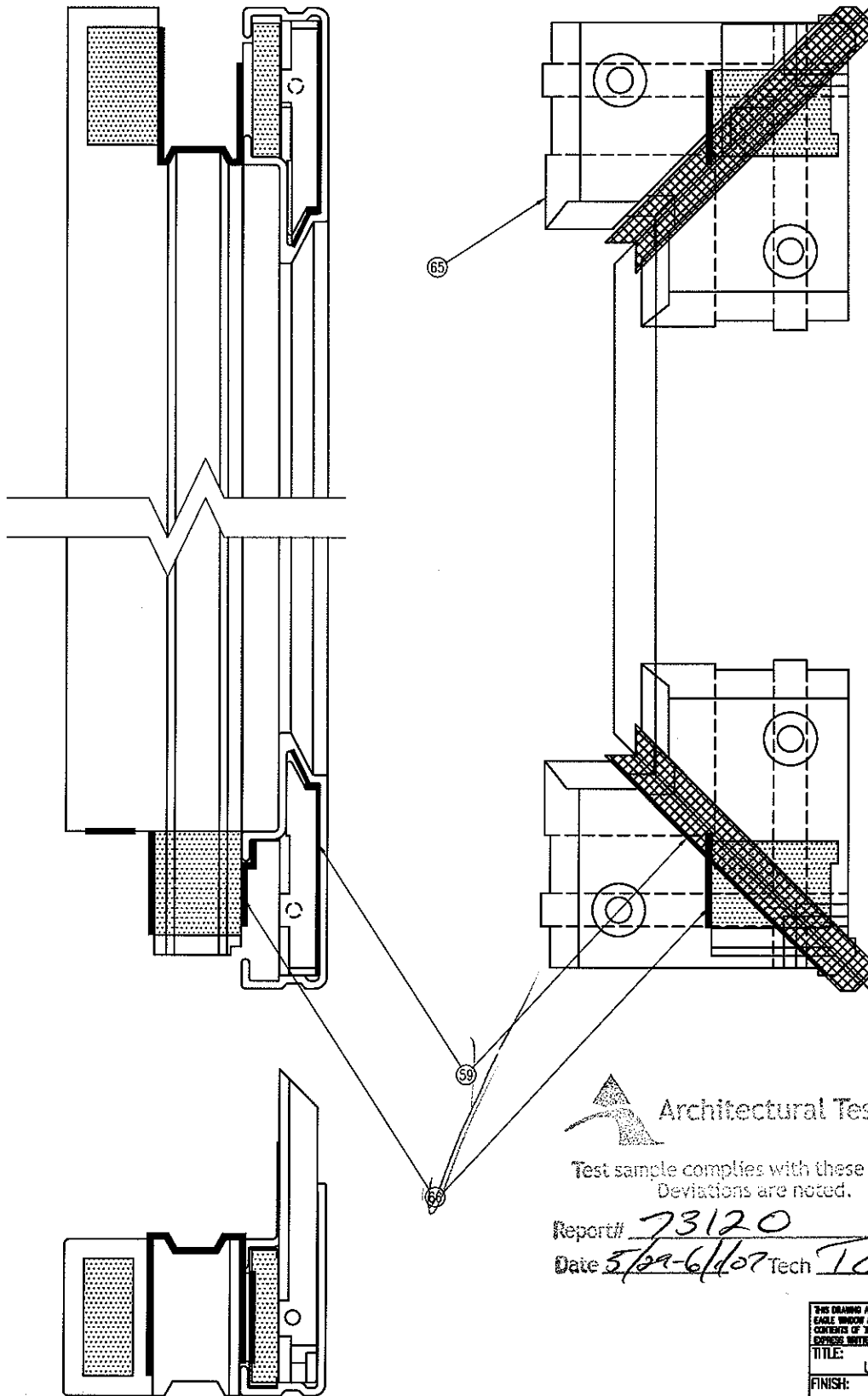
TITLE: CDHV
UPPER SASH ASSEMBLY

FINISH:

MATL:

DEF: KJS SCALE: 1=1
DCN: 0881 DRWG: 0534
DATE: 3/19/07 C 04

| NOI | DESCRIPTION | DFT | DOC | DATE |
|-----|-------------|-----|-----|---------------|
| | | | | DATE: 3/19/07 |



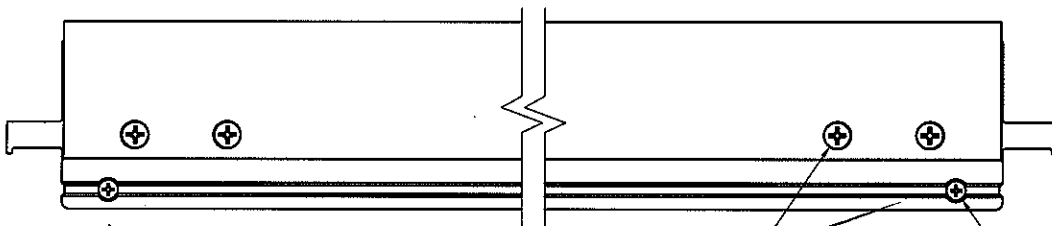
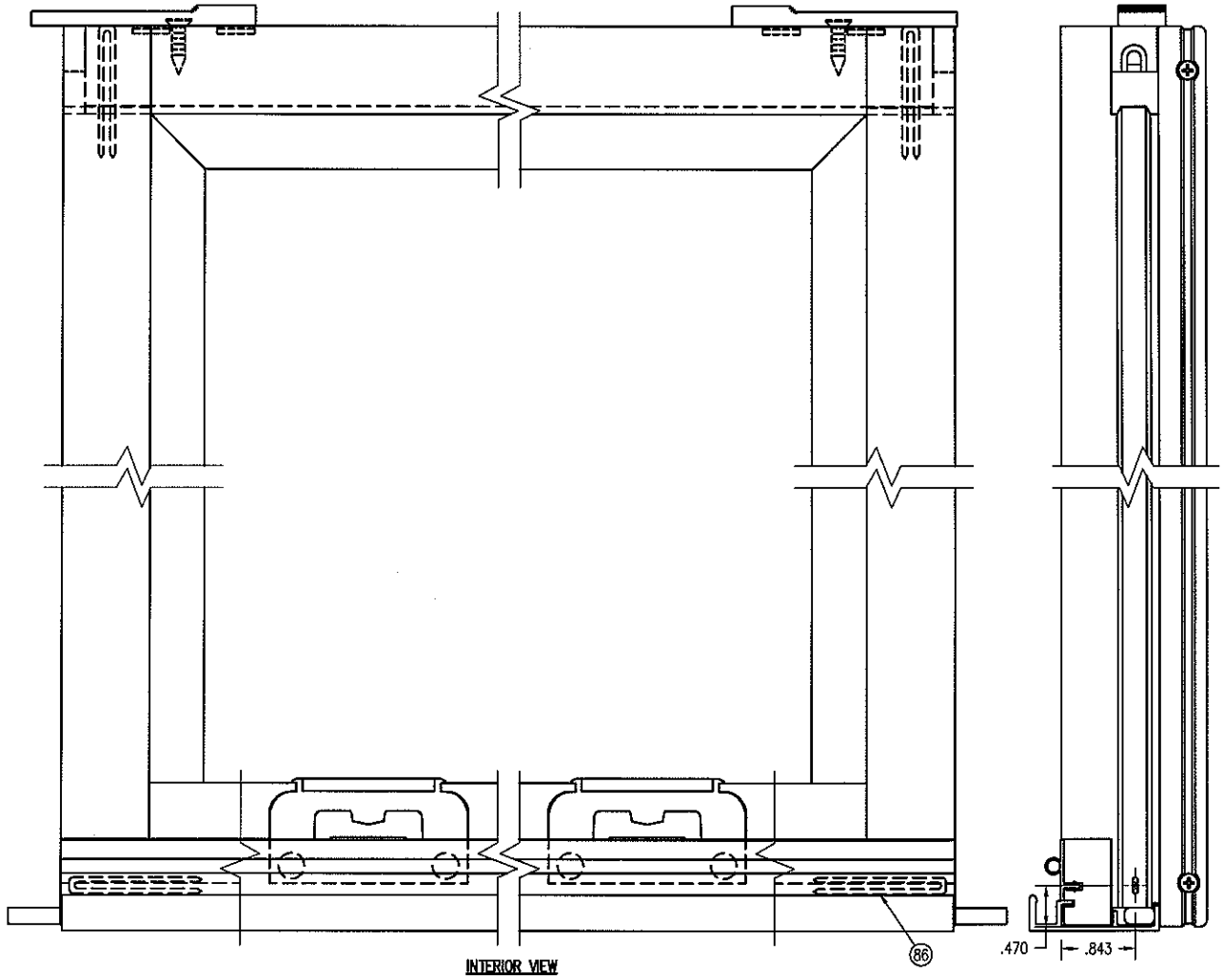
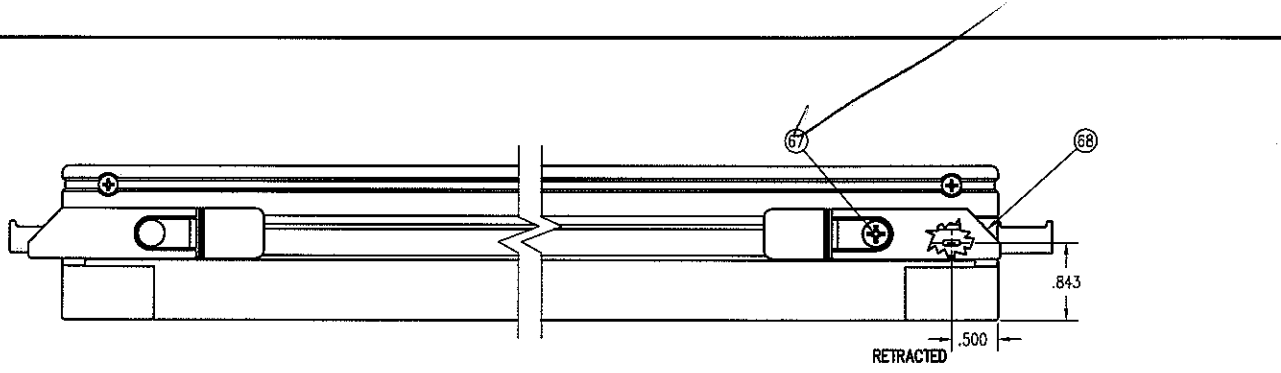
Architectural Testing

Test sample complies with these details.
Deviations are noted.

Report# 73120
Date 5/29-6/1/07 Tech TG

| | | | |
|--|---------|---------------------|------|
| THIS DRAWING AND ITS CONTENTS ARE THE PROPERTY OF LEAGUE WINDOW & DOOR. NO USE OR REPRODUCTION OF THE CONTENTS OF THIS DOCUMENT IS PERMITTED WITHOUT THE EXPRESS WRITTEN PERMISSION OF LEAGUE WINDOW & DOOR. | | | |
| TITLE: | | CDHV | |
| FINISH: | | UPPER SASH ASSEMBLY | |
| MATERIAL: | | | |
| DFT: | KJS | SCALE: | 1=1 |
| DCN: | 0881 | DRWG: | 0534 |
| DATE: | 3/19/07 | C | 05 |

| NO. | DESCRIPTION | DFT | DOC | DATE |
|-----|-------------|-----|-----|------|
| | | | | |



Architectural Testing

Test sample complies with these details.
Deviations are noted.

Report# 73120
Date 5/29-6/10/07 Tech TC

ALL DRAWINGS AND ITS CONTENTS ARE THE PROPERTY OF EAGLE WINDOW & DOOR. NO USE OR REPRODUCTION OF THE CONTENTS OF THIS DOCUMENT IS PERMITTED WITHOUT THE EXPRESS WRITTEN PERMISSION OF EAGLE WINDOW & DOOR.

| | |
|---------------------|------------|
| TITLE: CDHV | |
| UPPER SASH ASSEMBLY | |
| FINISH: | |
| MATERIAL: | |
| DFT: KJS | SCALE: 1=2 |
| DCN: 0881 | DRWG: 0534 |
| DATE: 3/19/07 | C 06 |

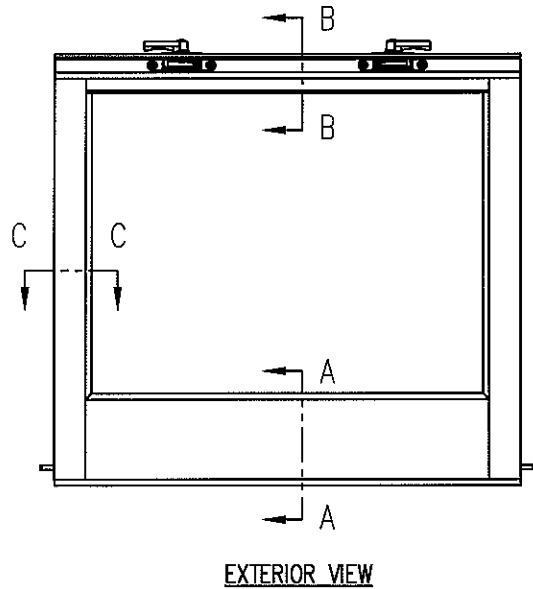
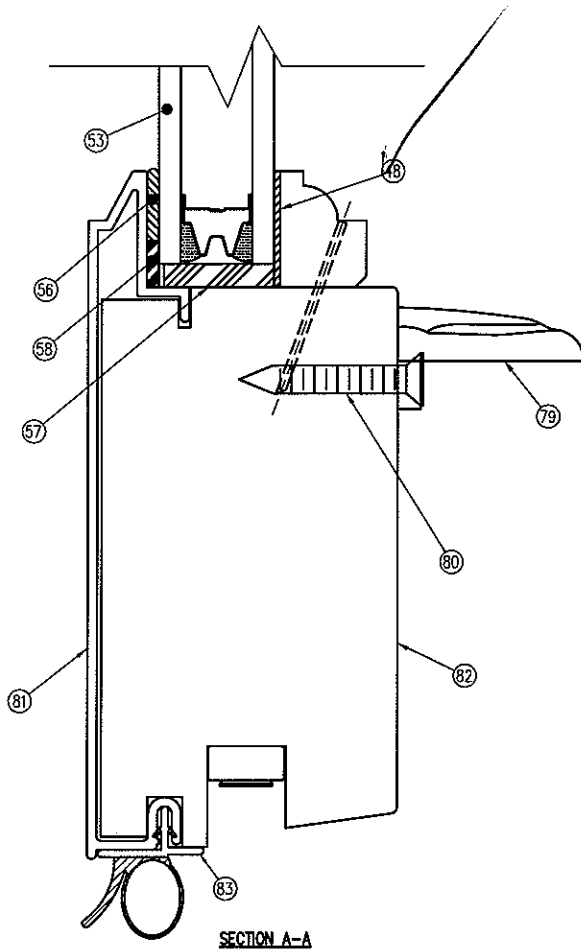
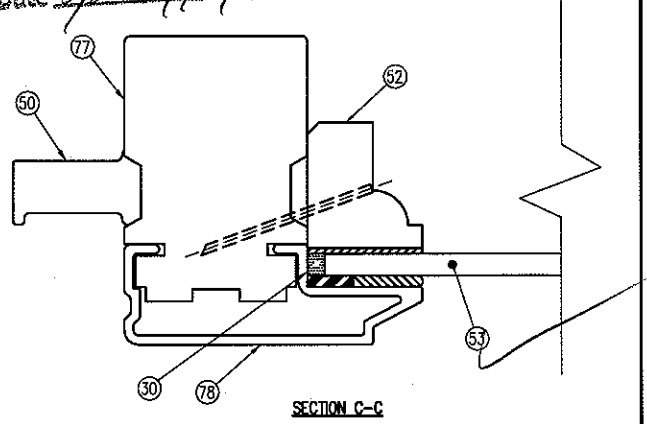
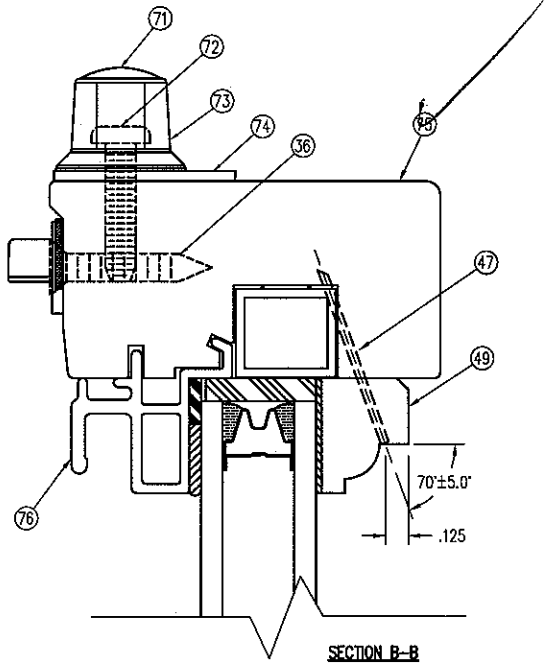
| NOI | DESCRIPTION | DFT | DOC | DATE |
|-----|-------------|-----|-----|------|
| | | | | |



Architectural Testing

Test sample complies with those details.
Deviations are noted.

Report# 73120
Date 5/22-6/1/07 Tech TG

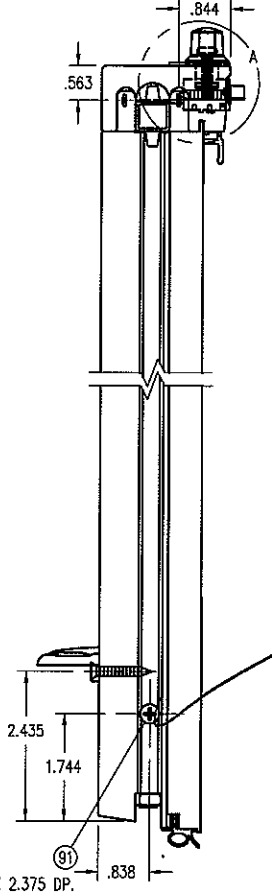
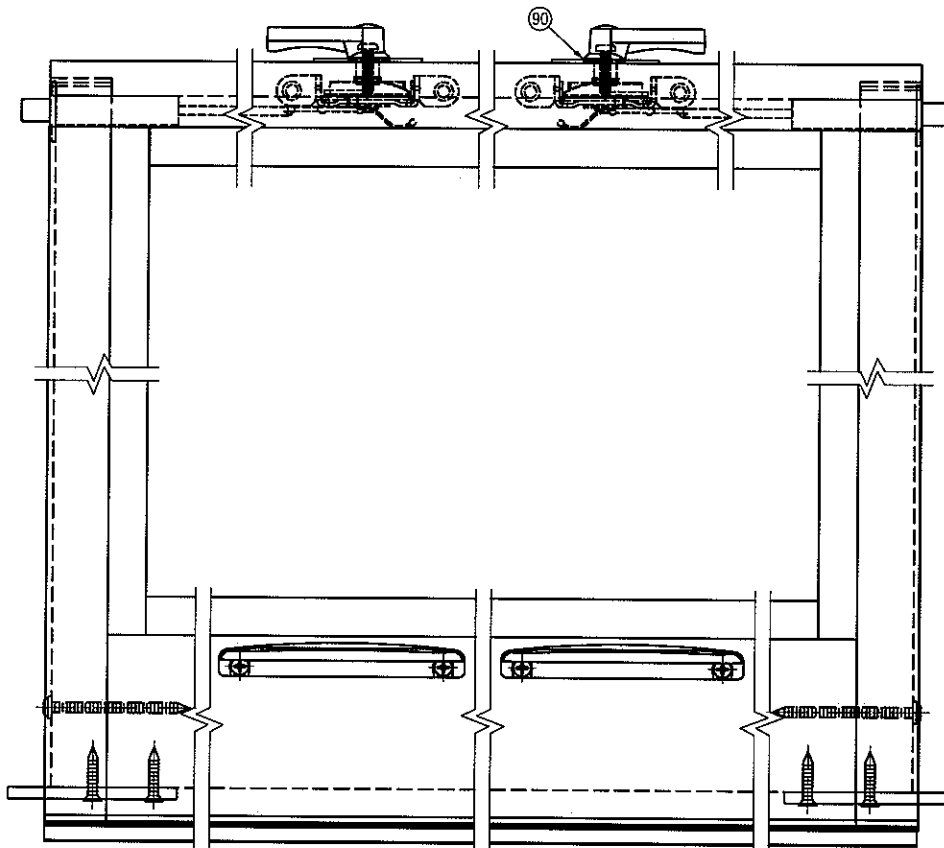
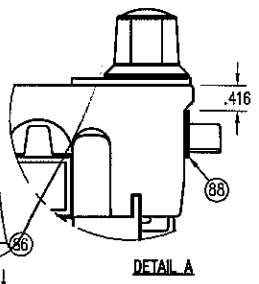
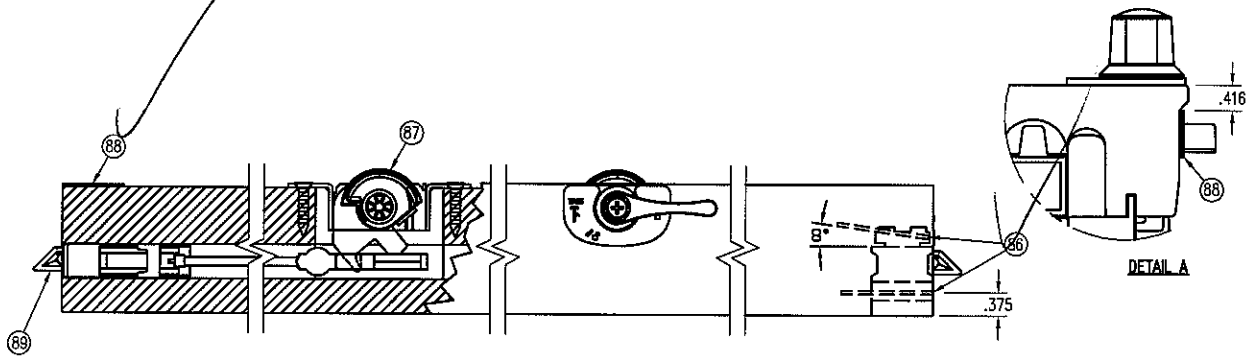


THIS DRAWING AND ITS CONTENTS ARE THE PROPERTY OF
EAGLE WINDOW & DOOR. NO USE OR REPRODUCTION OF THE
CONTENTS OF THIS DOCUMENT IS PERMITTED WITHOUT THE
EXPRESS WRITTEN PERMISSION OF EAGLE WINDOW & DOOR.

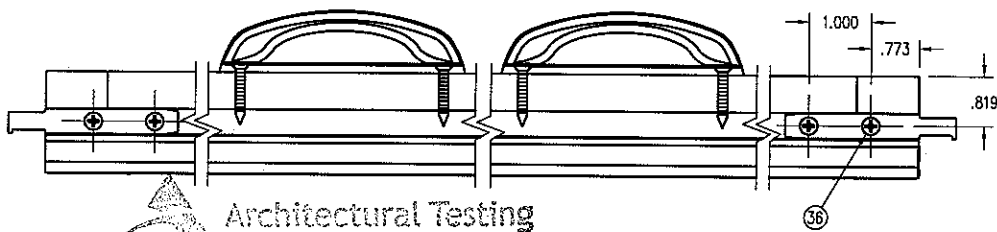
| | |
|---------|---------------------|
| TITLE: | CDHV |
| | LOWER SASH ASSEMBLY |
| FINISH: | |
| MATL: | |

| | | | |
|------|------|--------|------|
| DFT: | KJS | SCALE: | 1=1 |
| DCN: | 0881 | DRWG: | 0534 |

| NO | DESCRIPTION | DFT | DOC | DATE |
|----|-------------|-----|-----|---------------|
| | | | | DATE: 3/19/07 |
| | | | | C 07 |



INTERIOR VIEW



Architectural Testing

Test sample complies with these details.
Deviations are noted.

Report# 73120
Date 5/29-6/1/07 Tech TE

THIS DRAWING AND ITS CONTENTS ARE THE PROPERTY OF
EAGLE WINDOW & DOOR. NO USE OR REPRODUCTION OF THE
CONTENTS OF THIS DOCUMENT IS PERMITTED WITHOUT THE
EXPRESS WRITTEN PERMISSION OF EAGLE WINDOW & DOOR.

TITLE: CDHV
LOWER SASH ASSEMBLY

FINISH:

MATERIAL:

DFT: KJS SCALE: 1=3
DCN: 0881 DRWG: 0534

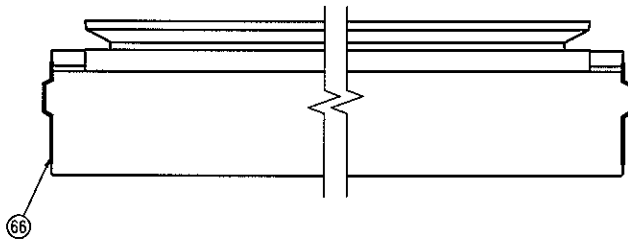
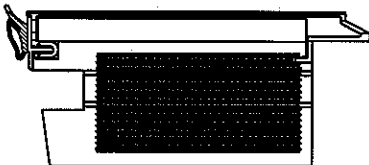
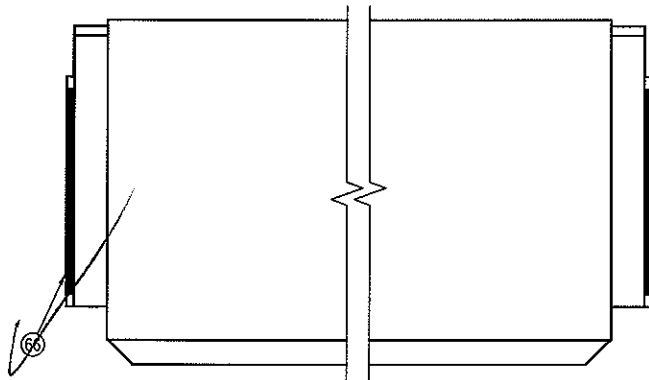
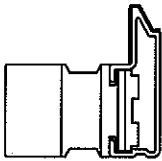
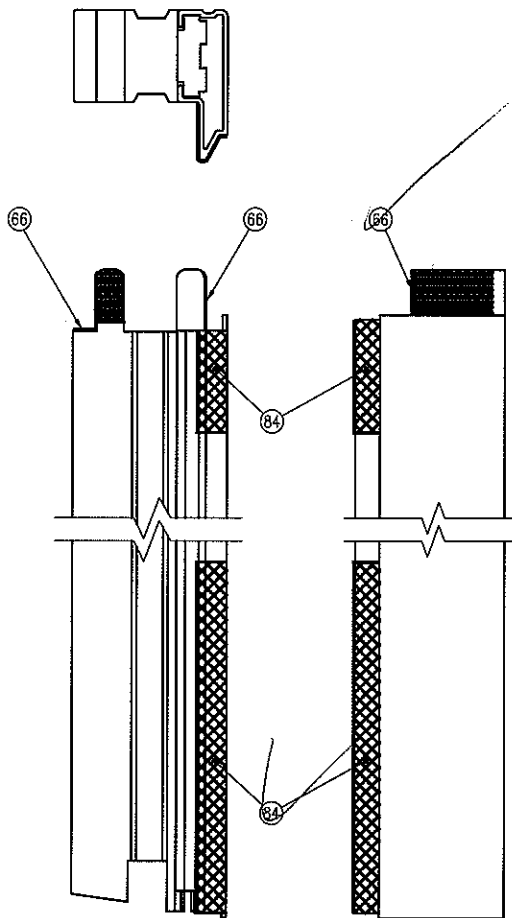
| NOI | DESCRIPTION | DFT | DOC | DATE |
|-----|-------------|-----|-----|--------------------|
| | | | | DATE: 3/19/07 C 09 |



Architectural Testing

Test sample complies with these details.
Deviations are noted.

Report# 73120
Date 5/29-6/1/07 Tech TG



THIS DRAWING AND ITS CONTENTS ARE THE PROPERTY OF
EAGLE WINDOW & DOOR. NO USE OR REPRODUCTION OF THE
CONTENTS OF THIS DOCUMENT IS PERMITTED WITHOUT THE
EXPRESS WRITTEN PERMISSION OF EAGLE WINDOW & DOOR.

TITLE: CDHV
LOWER SASH ASSEMBLY

FINISH:

MAIL:

DFI: KJS SCALE: 1=2

DCN: 0881 DRWG: 0534

DATE: 3/19/07 C 08

| NOI | DESCRIPTION | DFT | DOC | DATE |
|-----|-------------|-----|-----|------|
| | | | | |

| NO. | DWG NO. | DESCRIPTION | QUANTITY | MATERIAL | SUPPLIER |
|-----|---------|---|-------------|--------------------|---------------------|
| 1 | A514 | HEAD FRAME CLADDING | 1 | ALUMINUM | BONNELL |
| 2 | 21E9 | HEAD | 1 | WOOD (LVL) | EAGLE WINDOW & DOOR |
| 3 | A52D | HEAD PAD | 2 | EPDM | CLIM-A-TECH |
| 4 | 046W | SCREEN ASSEMBLY (OPT.) | 1 | ALUMINUM | HOMESHIELD |
| 5 | A43G | HEAD WEATHER STRIP | 1 | URETHANE FOAM | AMESBURY FOAMTITE |
| 6 | 21YA | FRAME PARTING STOP/HEAD COVER | 1 | WOOD | EAGLE WINDOW & DOOR |
| 7 | 212N | VENT INTERIOR HEAD STOP | 1 | WOOD | EAGLE WINDOW & DOOR |
| 8 | A473 | HALF SCREEN RETAINER | 1 | ALUMINUM | BONNELL |
| 9 | 046X | HALF SCREEN ASSEMBLY (OPT.) | 1 | ALUMINUM | HOMESHIELD |
| 10 | A732 | SNUBBER | 2 | GLASS FILLED NYLON | LCS |
| 11 | A74H | SILL WATER DAM | 1 | VINYL | CLIM-A-TECH |
| 12 | A72H | FRAME PLUG | 2 | NYLON | LCS |
| 13 | A571 | FRAME SILL COVER | 1 | ALUMINUM | HYDRO |
| 14 | A735 | SETTING PAD | 2 | PVC FOAM | CLIM-A-TECH |
| 15 | 20F1 | THERMAL BLOCK | 1 | WOOD | EAGLE WINDOW & DOOR |
| 16 | 20F8 | SILL STOP | 1 | WOOD | EAGLE WINDOW & DOOR |
| | 20FM | SILL STOP - AUX OPTION | | WOOD | EAGLE WINDOW & DOOR |
| 17 | A00L | 3/16" x 1 1/8" STAPLE | AS REQUIRED | GALVANIZED STEEL | ABILITY FASTENERS |
| 18 | A514 | SIDE FRAME COVER | 2 | ALUMINUM | HYDRO |
| 19 | 2134 | JAMB | 2 | WOOD (LVL) | EAGLE WINDOW & DOOR |
| 20 | 20F6 | SIDE INTERIOR STOP | 2 | WOOD | EAGLE WINDOW & DOOR |
| 21 | A28C | 5/8" BRAD HEAD FINISH NAIL - 18 GA. | AS REQUIRED | GALVANIZED STEEL | ABILITY FASTENERS |
| 22 | 20FL | INTERIOR SIDE STOP (MONUMENTAL) | 2 | WOOD | EAGLE WINDOW & DOOR |
| 23 | A71W 01 | JAMBLINER | 2 | VINYL | CLIM-A-TECH |
| | A71W 02 | JAMBLINER (W/ NOTCH) (MONUMENTAL) | | VINYL | CLIM-A-TECH |
| 24 | A71N | SPRING COVER | 2 | PVC | CLIM-A-TECH |
| 25 | A48Y | PVC SNAP IN UPPER | 2 | RIGID PVC | CLIM-A-TECH |
| | A558 | WOOD VENEER SNAP IN UPPER (OPT.) | | RIGID PVC | CLIM-A-TECH |
| 26 | A523 | JAMB WEATHERSTRIP UPPER | 2 | URETHANE FOAM | SCHLEGEL |
| 27 | A523 | JAMB WEATHERSTRIP LOWER | 2 | URETHANE FOAM | SCHLEGEL |
| 28 | A52F | SASH STOP | 2 | RIGID PVC | CLIM-A-TECH |
| 29 | A522 | ALUM. SNAP IN LOWER EXT. (OPT.) | 2 | ALUMINUM | HOMESHIELD |
| 30 | A030 | SILICONE SEALANT | AS REQUIRED | SILICONE | DOW CORNING |
| 31 | A733 | FOAM SILL FILLER | 1 | CLOSED CELLFOAM | CLIM-A-TECH |
| 32 | A43R | LOCK TERMINAL SHOE | 2 | | UNIQUE BALANCE |
| 33 | A734 | 07 CDHV SILL CUSHION | 1 | CLOSED CELLFOAM | CLIM-A-TECH |
| 34 | A54P | INTERLOCK FUZZ PAD | 1 | FELT ADHESIVE BACK | AMESBURY |
| 35 | A72Y | FRAME CLEAT (MONUMENTAL) | 1 | GLASS FILLED NYLON | LCS |
| 36 | A00T | #7 x 7/8" FHWS S.S. | 17 | STEEL | ABILITY FASTENERS |
| 37 | A330 | #8 x 1 1/2" FHWS Z&Y | 2 | STEEL | ABILITY FASTENERS |
| 38 | A70K | 07 CORNER BLOCK | 1 | | LCS |
| 39 | A11K | #6 x 7/16", #8 BODY FHWS S.S. | 7 | STAINLESS STEEL | ABILITY FASTENERS |
| 40 | A11D | 7/16" x 1 3/4" 16 GA. STAPLE | 6 | GALVANIZED STEEL | ABILITY FASTENERS |
| 41 | A100 | 90 CORNER KEY | 2 | NYLON | LAKE COUNTRY SALES |
| 42 | A08W | MDL CORNER KEY | 2 | ABS COMPOUND | LAKE COUNTRY SALES |
| 43 | A02E | #8 x 1 3/4" FH SMS (Z&Y) | 4 | STEEL | ABILITY FASTENERS |
| 44 | A39W | #7 x 1 1/4" FH SMS (S.S.) | 2 | STEEL | ABILITY FASTENERS |
| 45 | A16K | SASH COVER | 4 | ALUMINUM | HYDRO |
| 46 | 20F4 | UPPER RAIL | 1 | WOOD | EAGLE WINDOW & DOOR |
| 47 | A40E | 1" HARDENED STEEL BRAD (18 GA.) | AS REQUIRED | STEEL | ABILITY FASTENERS |
| 48 | A67M | .031 x .625 FOAM TAPE (GLASS STOP TAPE) | AS REQUIRED | POLYTHYLENE | ADHESIVE RESEARCH |
| 49 | 220N | HORZ. COLONIAL GLAZING STOP | 4 | WOOD | EAGLE WINDOW & DOOR |
| 50 | A742 | PIVOT PIN (DIE-CAST) "STD. DH" | 4 | ZAMACK-3 | DECO |
| | A743 | PIVOT PIN (S.S.) "MONUMENTAL SH" | | STAINLESS STEEL | GIESE |
| 51 | 20F4 | UPPER STILE | 2 | WOOD | EAGLE WINDOW & DOOR |
| 52 | 220J | VERT. COLONIAL GLAZING STOP | 4 | WOOD | EAGLE WINDOW & DOOR |
| 53 | A08J | 5/8" INSULATED GLASS | 1 | GLASS | CARDINAL IG |
| | A32Y | SINGLE PANE GLASS (OPT.) | | GLASS | CARDINAL IG |
| 54 | 221H | GLAZING STOP | 1 | WOOD | EAGLE WINDOW & DOOR |
| 55 | A72N | KEEPER | 2 | ZAMACK-3 | ASHLAND |
| 56 | A51H | INSTANT GLAZE II SEALANT | AS REQUIRED | POLYURETHANE | DOW CORNING |
| 57 | A00E | NEOPRENE GLASS SETTING BLOCK | AS REQUIRED | NEOPRENE RUBBER | CLIM-A-TECH |



Architectural Testing

Test sample complies with these details.
Deviations are noted.

Report#

73120

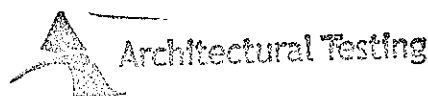
Date

5/22/07 Tech TG

| | |
|---------|-----------------------|
| TITLE: | CDHV UNIT ASSEMBLY |
| FINISH: | |
| MATL: | |
| DFT: | KJS |
| DCN: | 0881 |
| DATE: | 3/19/07 |
| SCALE: | 1=1 |
| DRWG: | 0534 |
| C | 11 |

NO. | DESCRIPTION | DFT | DOC | DATE

| NO. | DWG NO. | DESCRIPTION | QUANTITY | MATERIAL | SUPPLIER |
|-----|---------|--|-------------|------------------|---------------------|
| 58 | A08K | GLAZING SHIM .250 x .065 x 4.000 | AS REQUIRED | NEOPRENE RUBBER | CLIM-A-TECH |
| 59 | A01A | .094 x .265 BUTYL TAPE | AS REQUIRED | BUTYL RUBBER | PTI INC. |
| 60 | A627 | FOAM END PLUG | 2 | POLYETHYLENE | CLIM-A-TECH |
| 61 | A04T | #8 x 1/2" PH TEKS SCREW | AS REQUIRED | STEEL | ABILITY FASTENERS |
| 62 | 20F2 | UPPER CHECK RAIL | 1 | WOOD | EAGLE WINDOW & DOOR |
| 63 | A72W | CHECK RAIL COVER (UPPER) | 1 | ALUMINUM | HYDRO |
| 64 | A72T | WEATHER STRIP | 1 | VINYL | CLIM-A-TECH |
| 65 | A172 | SASH CORNER KEY | 4 | NYLON | LAKE COUNTRY SALES |
| 66 | A01D | TYPE 1 BOND WOOD ADHESIVE | AS REQUIRED | COPOLYMER | NATIONAL STARCH |
| 67 | A00R | #7 x 5/8" FHSMS | 2 | STAINLESS STEEL | ABILITY FASTENERS |
| 68 | A72R | SURFACE TILT-LATCH | 2 | NYLON | HILL DESIGN |
| 69 | | | | | |
| 70 | A19H | #4 x 1/2" FHSMS | 8 | STAINLESS STEEL | ABILITY FASTENERS |
| 71 | A54J | DH HANDLE SCREW HOLE PLUG | 2 | NYLON | ASHLAND HARDWARE |
| 72 | A54L | #8-32 x 7/8" PPHMS, TRI-OBIAL | 2 | STEEL | ASHLAND HARDWARE |
| 73 | A54G | E-TILT DH LOCK HANDLE | 2 | ZAMACK-3 | ASHLAND HARDWARE |
| 74 | A54H | E-TILT DH BEZEL PLATE | 2 | ZAMACK-3 | ASHLAND HARDWARE |
| 75 | 20F5 | LOWER CHECK RAIL | 1 | WOOD | EAGLE WINDOW & DOOR |
| 76 | A72X | CHECK RAIL COVER (LOWER) | 1 | ALUMINUM | HYDRO |
| 77 | 20F4 | LOWER STILE | 2 | WOOD | EAGLE WINDOW & DOOR |
| 78 | A741 | LOWER STILE COVER | 2 | ALUMINUM | HYDRO |
| 79 | A63A | FINGER LIFT | AS REQUIRED | ZAMACK-3 | ASHLAND HARDWARE |
| 80 | A03Y | #6 x 1 FHSMS Z&Y (PAINTED HEAD) | AS REQUIRED | STEEL | ABILITY FASTENERS |
| 81 | A71X | LOWER RAIL COVER | 1 | ALUMINUM | HYDRO |
| 82 | 20E8 | LOWER RAIL | 1 | WOOD | EAGLE WINDOW & DOOR |
| 83 | A72G | LOWER SASH WEATHER STRIP | 1 | | CLIM-A-TECH |
| 84 | A737 | .031 x 1.125 SEALANT (BUTYL TAPE) | 3 | BUTYL RUBBER | DEVAN SEALANTS |
| 85 | A54N | #6 x 1 1/4" FHWS TEKS POINT S.S. | 4 | STAINLESS STEEL | ABILITY FASTENERS |
| 86 | A131 | 3/16 x 1 1/2 STAPLE (STD. DH) | 6 | GALVANIZED STEEL | ABILITY FASTENERS |
| 87 | A54F | E-TILT DOUBLE HUNG LOCK | 2 | | ASHLAND HARDWARE |
| 88 | A67G | LOWER SASH PAD | 2 | | CLIM-A-TECH |
| 89 | A72P | TILT-LATCH ARM | 2 | PVC | ASHLAND HARDWARE |
| 90 | A54D | SPRING WASHER | 2 | STAINLESS STEEL | ASHLAND HARDWARE |
| 91 | A48C | #8 x 2 1/4" COMBO ROUND WASHER HEAD | 2 | STEEL | ABILITY FASTENERS |
| 92 | H-40 | 5/8" BETWEEN GLASS MUNTIN | AS REQUIRED | ALUMINUM | ALLMETAL |
| 93 | P/PD | 1" CONTOUR MUNTIN | AS REQUIRED | ALUMINUM | ALLMETAL |
| 94 | 220H | 1 1/2" INTERIOR COLONIAL MDL BAR | AS REQUIRED | WOOD | EAGLE WINDOW & DOOR |
| 95 | H-40 | SPACER CHANNEL | AS REQUIRED | ALUMINUM | ALLMETAL |
| 96 | A507 | 1 1/2" EXTERIOR MDL BAR | AS REQUIRED | ALUMINUM | HYDRO |
| 97 | A67X | 1 1/2" MDL ADHESIVE TAPE (EXTERIOR TAPE) | AS REQUIRED | POLYETHYLENE | ADHESIVE RESEARCH |
| 98 | A67L | 1 1/2" MDL ADHESIVE TAPE (INTERIOR TAPE) | AS REQUIRED | POLYETHYLENE | ADHESIVE RESEARCH |
| 99 | 220H | 1 1/8" INTERIOR COLONIAL MDL BAR | AS REQUIRED | WOOD | EAGLE WINDOW & DOOR |
| 100 | H-40 | SPACER CHANNEL | AS REQUIRED | ALUMINUM | ALLMETAL |
| 101 | A507 | 1 1/8" EXTERIOR MDL BAR | AS REQUIRED | ALUMINUM | HYDRO |
| 102 | A67W | 1 1/8" MDL ADHESIVE TAPE (EXTERIOR TAPE) | AS REQUIRED | POLYETHYLENE | ADHESIVE RESEARCH |
| 103 | A67R | 1 1/8" MDL ADHESIVE TAPE (INTERIOR TAPE) | AS REQUIRED | POLYETHYLENE | ADHESIVE RESEARCH |
| 104 | 220H | 7/8" INTERIOR COLONIAL MDL BAR | AS REQUIRED | WOOD | EAGLE WINDOW & DOOR |
| 105 | H-40 | SPACER CHANNEL | AS REQUIRED | ALUMINUM | ALLMETAL |
| 106 | A507 | 7/8" EXTERIOR MDL BAR | AS REQUIRED | ALUMINUM | HYDRO |
| 107 | A67T | 7/8" MDL ADHESIVE TAPE (EXTERIOR TAPE) | AS REQUIRED | POLYETHYLENE | ADHESIVE RESEARCH |
| 108 | A67N | 7/8" MDL ADHESIVE TAPE (INTERIOR TAPE) | AS REQUIRED | POLYETHYLENE | ADHESIVE RESEARCH |
| 109 | 20FA | 5/8" INTERIOR COLONIAL MDL BAR | AS REQUIRED | WOOD | EAGLE WINDOW & DOOR |
| 110 | H-40 | SPACER CHANNEL | AS REQUIRED | ALUMINUM | ALLMETAL |
| 111 | A72D | 5/8" EXTERIOR MDL BAR | AS REQUIRED | ALUMINUM | HYDRO |
| 112 | A75N | 5/8" MDL ADHESIVE TAPE (EXTERIOR TAPE) | AS REQUIRED | POLYETHYLENE | ADHESIVE RESEARCH |
| 113 | A75M | 5/8" MDL ADHESIVE TAPE (INTERIOR TAPE) | AS REQUIRED | POLYETHYLENE | ADHESIVE RESEARCH |
| 114 | N/A | ADHESIVE FOAM TAPE | AS REQUIRED | POLYETHYLENE | CARDINAL |



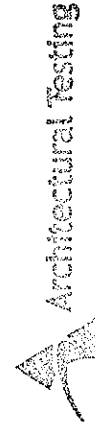
Test sample complies with these details.
Deviations are noted.

Report# 73120
Date 5/29-6/16/07 Tech [Signature]

| | |
|---------|---------------|
| TITLE: | CDHV |
| | UNIT ASSEMBLY |
| FINISH: | |
| MATL: | |
| DFT: | KJS |
| DCN: | 0881 |
| SCALE: | 1=1 |
| DRWG: | 0534 |
| DATE: | 3/19/07 |
| | C 12 |

NOTE: 1. UNLESS OTHERWISE SPECIFIED, ALL DIMENSIONS SHOWN ARE IN INCHES AND ALL TOLERANCES ARE TO BE: DEC. ±.005; FRAC. ±1/64; ANGLES ±1/2°.

| PRODUCT | GLASS | A |
|--|----------------------------|------|
| (PRE '96 & NG) CLAD CASEMENT & AWNING | 5/8" | .469 |
| (PRE '96 & NG) CLAD CASEMENT PICTURE | 3/4" | .469 |
| CLAD PIANO HINGE CASEMENT | 5/8" | .469 |
| CLAD PIANO HINGE CASEMENT (3056 & ABOVE) | 3/4" | .469 |
| CLAD RADIUS CASEMENT | 5/8" & 3/4" | .469 |
| (PRE '96 & NG) CLAD DOUBLE / SINGLE HUNG | 5/8" | .469 |
| (PRE '96 & NG) CLAD DOUBLE HUNG PICTURE | 5/8" | .469 |
| CLAD DOUBLE HUNG TRANSOM | 5/8" | .469 |
| CLAD DOUBLE HUNG REPLACEMENT SASH | 5/8" | .469 |
| ALL CLAD (NON-RADIUS) AUXILIARY (0-15 SQ. FT.) | 3/4" | .469 |
| ALL CLAD (NON-RADIUS) AUXILIARY (15+ SQ. FT.) | 1" | .469 |
| CLAD SLIDING WINDOW | 5/8" | .469 |
| CLAD INSWING / OUTSWING FRENCH DOOR | 3/4" | .469 |
| CLAD FRENCH DOOR TRANSOM | 3/4" | .469 |
| CLAD PATIO / FRENCH SLIDING DOOR | 3/4" | .469 |
| (PRE '98) WOOD CASEMENT & AWNING | 3/4" | .680 |
| (PRE '98) WOOD CASEMENT PICTURE | 3/4" | .680 |
| (NG) WOOD CASEMENT & AWNING | 5/8" | .469 |
| (NG) WOOD CASEMENT PICTURE | 5/8" & 3/4" | .469 |
| WOOD PIANO HINGE CASEMENT | 5/8" | .469 |
| WOOD PIANO HINGE CASEMENT (3056 & ABOVE) | 3/4" | .469 |
| (PRE '96 & NG) WOOD DOUBLE / SINGLE HUNG | 5/8" | .469 |
| (PRE '96 & NG) WOOD DOUBLE HUNG PICTURE | 5/8" | .469 |
| WOOD SLIDING WINDOW | 5/8" | .469 |
| WOOD DOUBLE HUNG TRANSOM | 5/8" | .469 |
| WOOD DOUBLE HUNG REPLACEMENT SASH | 5/8" | .469 |
| WOOD (NON-RADIUS) AUXILIARY (0-15 SQ. FT.) | 3/4" | .469 |
| WOOD (NON-RADIUS) AUXILIARY (15+ SQ. FT.) | 1" | .469 |
| WOOD INSWING / OUTSWING FRENCH DOOR | 3/4" | .469 |
| WOOD FRENCH DOOR TRANSOM | 3/4" | .469 |
| WOOD PATIO / FRENCH SLIDING DOOR | 3/4" | .469 |
| CLAD & WOOD PATIO/FR. SLIDING DOOR (BLIND GLASS) | 1" | .406 |
| ALL CLAD AND WOOD WINDOWS AND DOORS EXCEPT AUXILIARY UNITS WHICH ALWAYS USES | SINGLE GLAZED H. MSTR MONO | .680 |

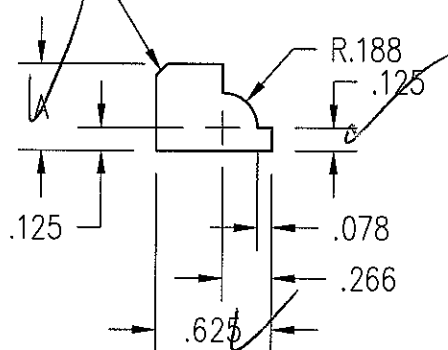


Test sample complies with these details.
Deviations are noted.

Report# 73120
Date 5/29/07 Tech TC

| PANEL STOPS | | |
|------------------------|------|---|
| PRODUCT | A | |
| WOOD OUTSWING SIDELITE | .469 | 2 |
| WOOD OUTSWING TRANSOM | .469 | |
| WOOD INSWING SIDELITE | .469 | |
| WOOD INSWING TRANSOM | .469 | |
| CLAD DHG PICTURE | .406 | 4 |

.062 x .062 CHAMFER



THIS DRAWING AND ITS CONTENTS ARE THE PROPERTY OF EAGLE WINDOW & DOOR. NO USE OR REPRODUCTION OF THE CONTENTS OF THIS DOCUMENT IS PERMITTED WITHOUT THE EXPRESS WRITTEN PERMISSION OF EAGLE WINDOW & DOOR.

TITLE: COLONIAL GLAZING STOP

FINISH:

| | | | | | | |
|----|-------------------------------|-----|------|---------|--------------------------|------------|
| 04 | ADDED CDHG PICT TO CHART | KJS | 0881 | 3/6/07 | MATL: | |
| 03 | ADDED SIZE FOR IMPACT GLAZING | TWN | 0972 | 9/1/05 | EAGLE STD WOOD OFFERINGS | |
| 02 | CHG'D CLAD PANEL STOP "A" DIM | JH | 0794 | 6/30/05 | DFT: JMH | SCALE: 1=1 |
| 01 | ADDED KYLER BLIND SIZE | TWN | 0910 | 4/19/05 | DCN: 0650 | DRWG: 220J |
| NO | DESCRIPTION | DFT | DOC | DATE | DATE: 5/29/2002 | A 01 OF 03 |

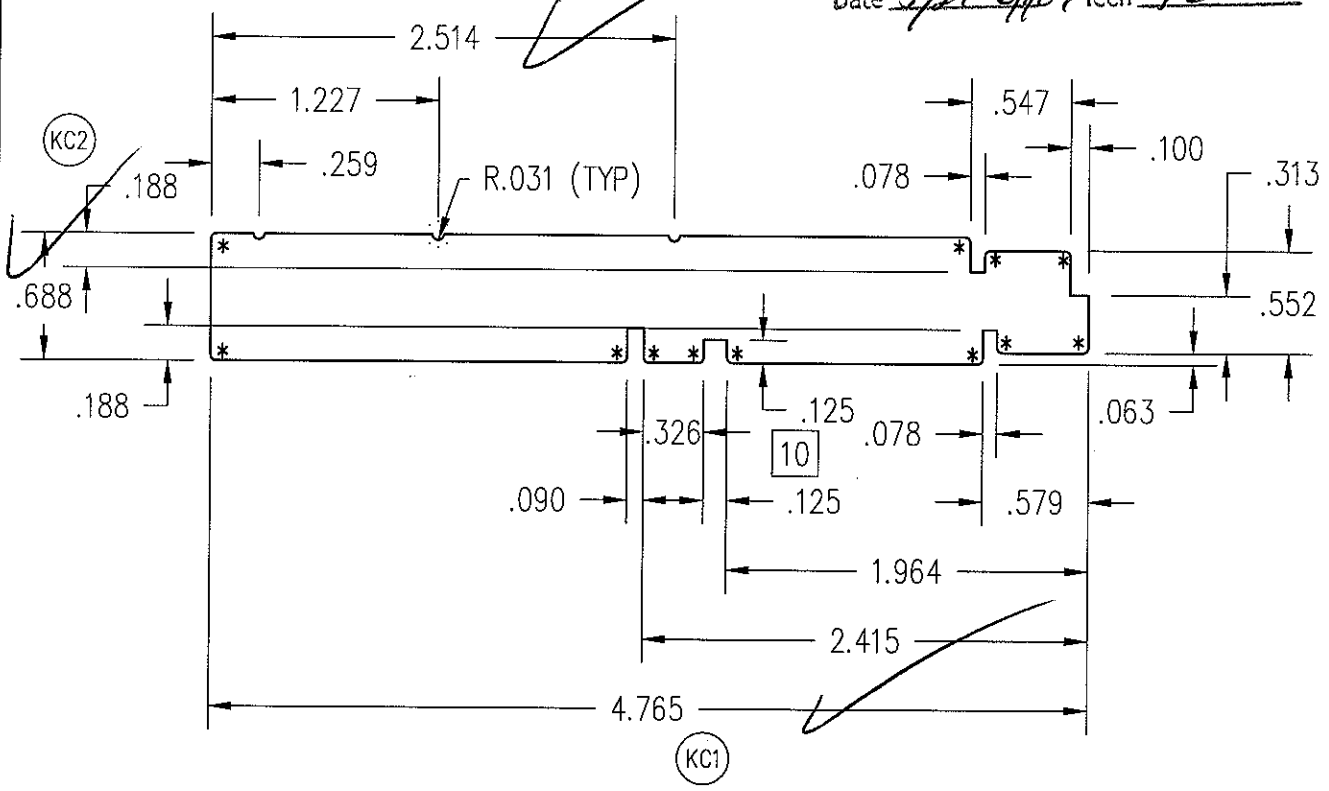
NOTE: 1. UNLESS OTHERWISE SPECIFIED, ALL DIMENSIONS SHOWN ARE IN INCHES AND ALL TOLERANCES ARE TO BE: DEC. ± 0.005 ; FRAC. $\pm 1/64$; ANGLES $\pm 1/2^\circ$.
 2. UNLESS OTHERWISE SPECIFIED ALL RADII = $.031$. DENOTED BY * (12 PLCS).



Architectural Testing

Test sample complies with these details.
 Deviations are noted.

Report# 73120
 Date 5/29-6/10/07 Tech TG



THIS DRAWING AND ITS CONTENTS ARE THE PROPERTY OF EAGLE WINDOW & DOOR. NO USE OR REPRODUCTION OF THE CONTENTS OF THIS DOCUMENT IS PERMITTED WITHOUT THE EXPRESS WRITTEN PERMISSION OF EAGLE WINDOW & DOOR.

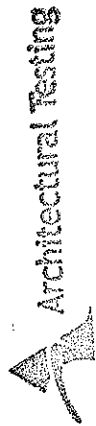
TITLE: CDHV/CDHVET/CSW - HEAD
 CDHF - HEAD/SIDE JAMB

FINISH:

MATL: SEE PAGE 02

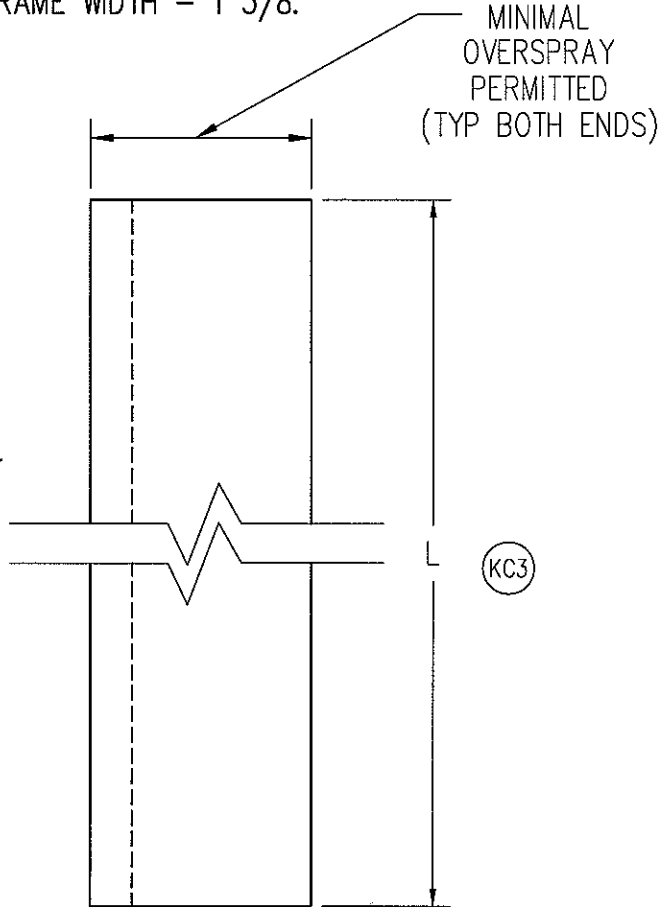
| | | | | | | |
|----|-----------------------------|-----|------|---------|-----------------|------------|
| 10 | ADD 2ND KERF TO MATCH #2134 | TWN | 0768 | 1/30/03 | DFT: BRL | SCALE: 1=1 |
| 09 | ADDED E-TILT DHG | RJW | 0589 | 6/26/02 | DCN: 0215 | DRWG: 21E9 |
| NO | DESCRIPTION | DFT | DOC | DATE | DATE: 9/29/1995 | A 01 OF 02 |

NOTE: 1. UNLESS OTHERWISE SPECIFIED, ALL DIMENSIONS SHOWN ARE IN INCHES AND ALL TOLERANCES ARE TO BE: DEC. ± 0.005 ; FRAC. $\pm 1/64$; ANGLES $\pm 1/2^\circ$.
 2. L = FRAME WIDTH - $1 \frac{3}{8}$.

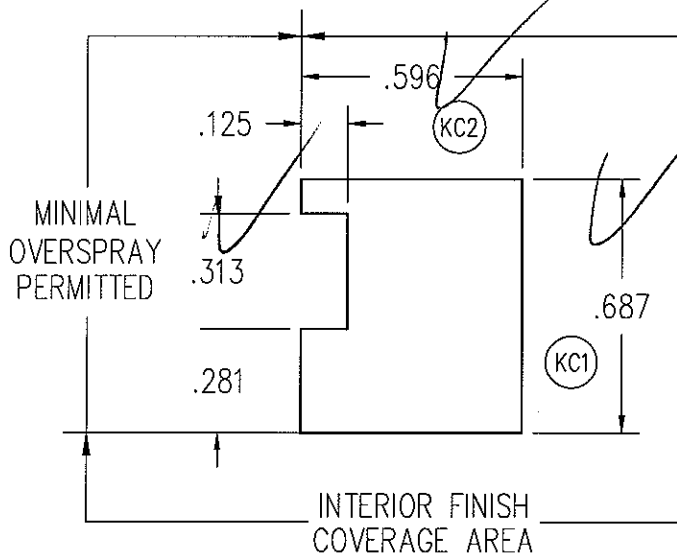


Test sample complies with these details. Deviations are noted.

Report# 25120
 Date 5/29-6/16/93 Tech TC



| DOUBLE HUNG | |
|-------------|--------|
| FRAME WIDTH | L |
| 20 | 18 5/8 |
| 24 | 22 5/8 |
| 28 | 26 5/8 |
| 30 | 28 5/8 |
| 32 | 30 5/8 |
| 36 | 34 5/8 |
| 40 | 38 5/8 |
| 44 | 42 5/8 |
| 48 | 46 5/8 |
| 60 | 58 5/8 |

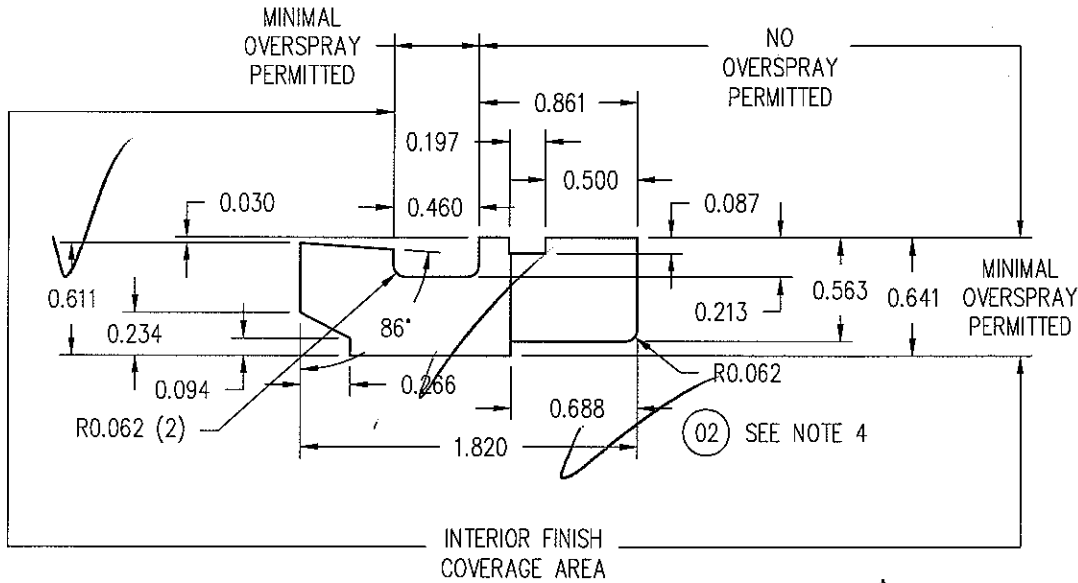


| CSW / WSW | |
|-------------|--------|
| FRAME WIDTH | L |
| 36 | 34 5/8 |
| 48 | 46 5/8 |
| 60 | 58 5/8 |
| 72 | 70 5/8 |
| 96 | 94 5/8 |

| | |
|--|-----------------|
| THIS DRAWING AND ITS CONTENTS ARE THE PROPERTY OF EAGLE WINDOW & DOOR. NO USE OR REPRODUCTION OF THE CONTENTS OF THIS DOCUMENT IS PERMITTED WITHOUT THE EXPRESS WRITTEN PERMISSION OF EAGLE WINDOW & DOOR. | |
| TITLE: CDHV,WDHV,CSW,WSW HEAD INTERIOR STOP | |
| FINISH: | |
| MATL: CLEAR PINE | |
| DFT: GDE | SCALE: 2=1 |
| NO: CHG'D PROFILE | DRWG: 212N |
| DESCRIPTION | A 01 OF 01 |
| JH 0840 | DATE: 3/25/1993 |
| B/15/2003 | |

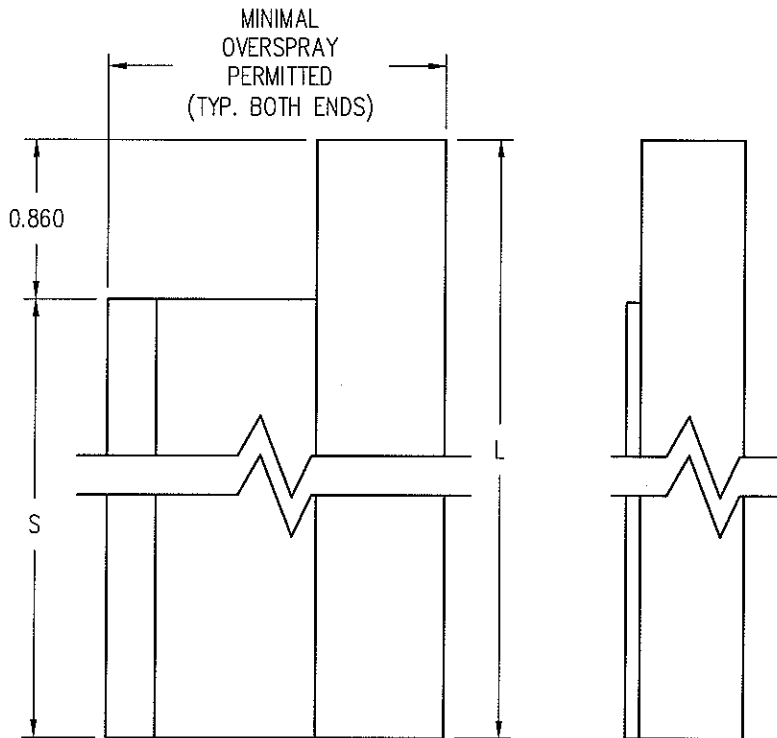
| | | | | |
|----|---------------|-----|------|-----------|
| 06 | CHG'D PROFILE | JH | 0840 | B/15/2003 |
| NO | DESCRIPTION | DFT | DOC | DATE |

- Note: 1 UNLESS OTHERWISE SPECIFIED, ALL DIMENSIONS ARE SHOWN ARE IN INCHES AND ALL TOLERANCES ARE TO BE:
 DEC. +/- .005, FRACTION +/- 1/64, ANGLES +/- 1/2.
 2 L = FRAME HEIGHT - 2 11/16".
 3 LEFT & RIGHTS REQUIRED, LEFT HAND SHOWN (AS VIEWED FROM EXT.)
 4 HOLD 0.750 AT TENON BEFORE MOULDING



Test sample complies with these details.
 Deviations are noted.

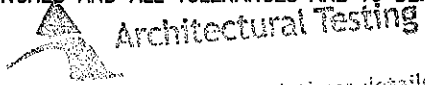
Report# 73120
 Date 5/24 4/107 Tech TG



| FRAME HEIGHT | L | S |
|--------------|---------|---------|
| 36 | 33 5/16 | 32 7/16 |
| 40 | 37 5/16 | 36 7/16 |
| 48 | 45 5/16 | 44 7/16 |
| 54 | 51 5/16 | 50 7/16 |
| 60 | 57 5/16 | 56 7/16 |
| 66 | 63 5/16 | 62 7/16 |
| 72 | 69 5/16 | 68 7/16 |
| 78 | 75 5/16 | 74 7/16 |
| 84 | 81 5/16 | 80 7/16 |
| 90 | 87 5/16 | 86 7/16 |

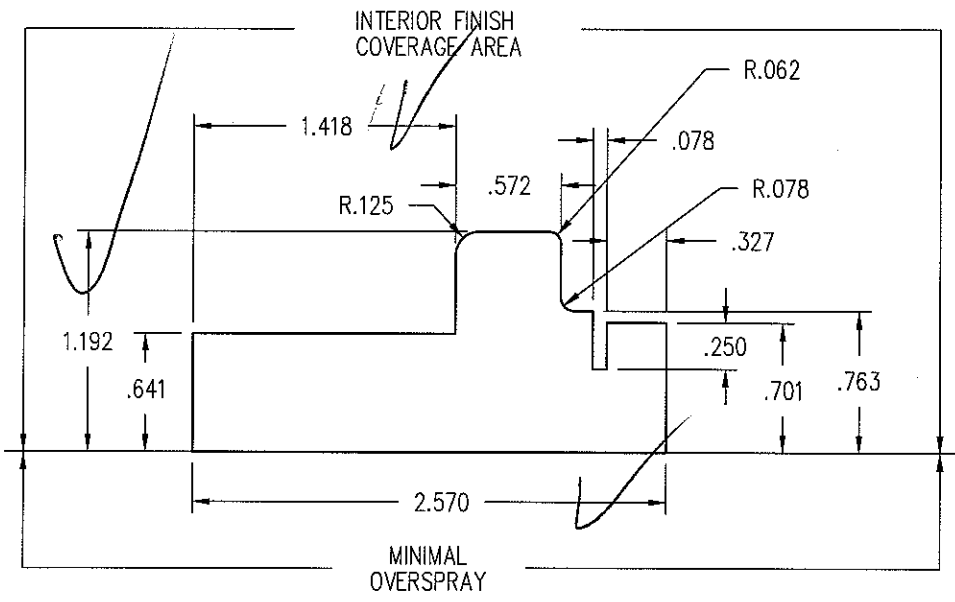
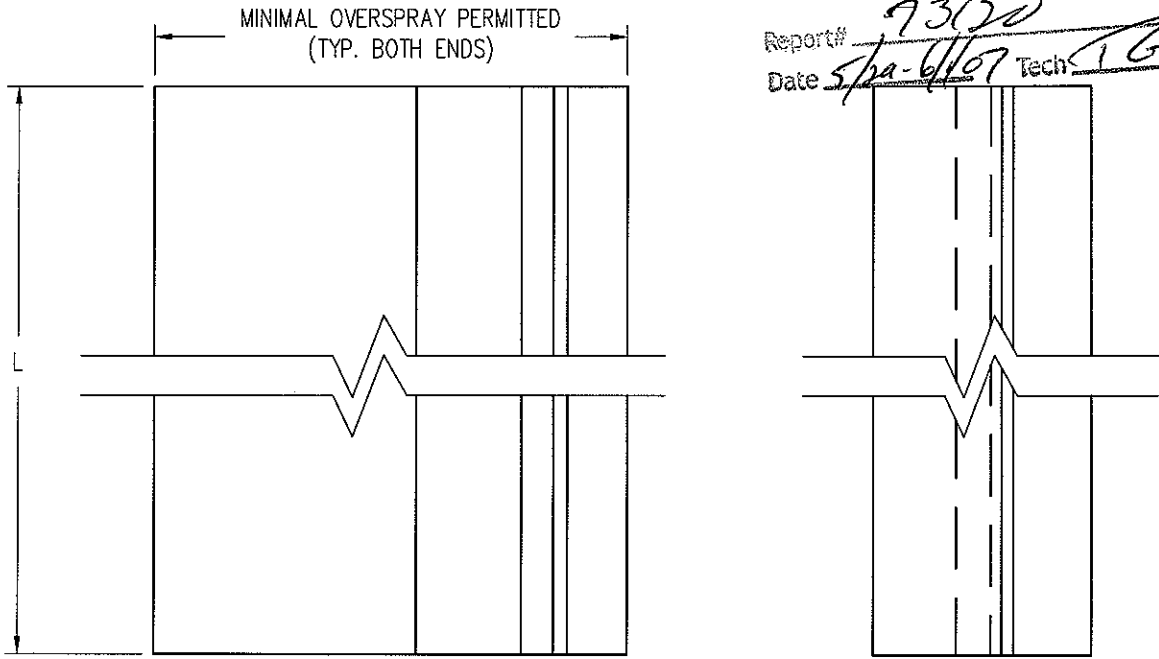
| | | | | |
|--|-----------------------|-----------------------------|------|---|
| 02 | ADDED NOTE #4 | JH | 0893 | 06/17/2004 |
| 01 | ADD FILLET | PJB | 0723 | 10/08/2002 |
| NO | Description of Change | Drafter | DCN# | Date |
| Title: CDHVET/WDHVET SIDE INTERIOR STOP | | Finish: INT FINISH SEE A02F | | Material: CLEAR PINE |
| Scale: 1"=1" | | Date: 1/18/2002 | | THIS DRAWING AND ITS CONTENTS ARE THE PROPERTY OF EAGLE WINDOW & DOOR. NO USE OR REPRODUCTION OF THE CONTENTS OF THIS DOCUMENT IS PERMITTED WITHOUT THE EXPRESS WRITTEN PERMISSION OF EAGLE WINDOW & DOOR. |
| Drafter: AWW | | DCN# 0723 | | |
| REVISION: 2 | | | | 21Y9 01 of 01 |

Note: 1. UNLESS OTHERWISE SPECIFIED, ALL DIMENSIONS ARE SHOWN ARE IN INCHES AND ALL TOLERANCES ARE TO BE:
 DEC. +/- .005, FRACTION +/- 1/64, ANGLES +/- 1/2.
 2. L = FRAME WIDTH - 3 21/32".



Test sample complies with these details.
 Deviations are noted.

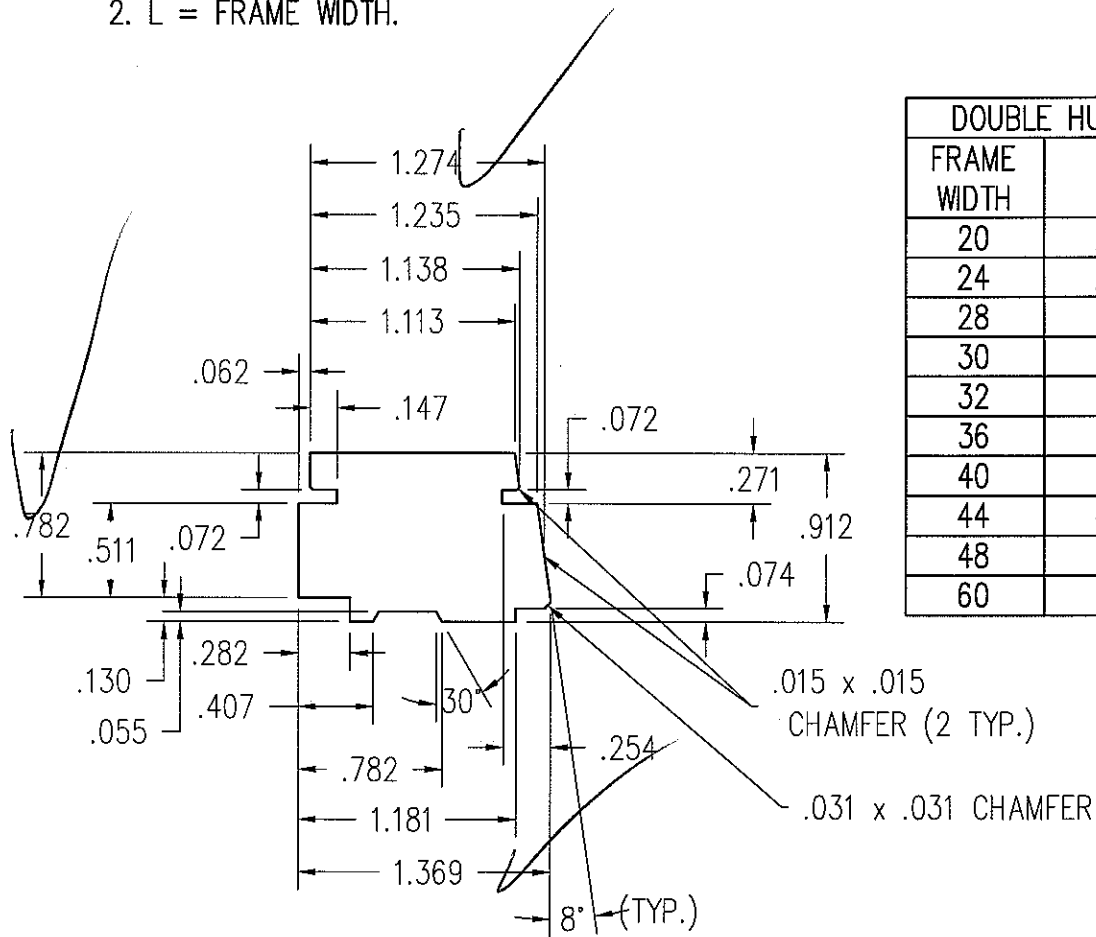
Report# 93120
 Date 5/18/07 Tech LG



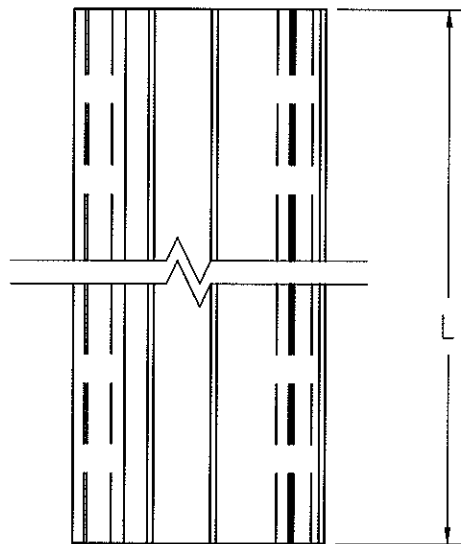
| FRAME WIDTH | L |
|-------------|----------|
| 20 | 16 11/32 |
| 24 | 20 11/32 |
| 28 | 24 11/32 |
| 30 | 26 11/32 |
| 32 | 28 11/32 |
| 36 | 32 11/32 |
| 40 | 36 11/32 |
| 44 | 40 11/32 |
| 48 | 44 11/32 |
| 60 | 56 11/32 |

| | | | | |
|------------------------------------|-----------------------------|--|------|----------------------|
| 03 | CHANGED PROFILE SIZE | TWN | 0881 | 3/30/07 |
| 02 | CHANGED SCALE | KJS | BOM | 05/02/06 |
| 01 | ADDED FINISH TO TITLE BLOCK | JH | 0893 | 06/17/04 |
| NO | Description of Change | Drafter | DCN# | Date |
| Title: CDHV/WDHV HEAD PARTING STOP | | Finish: PRESERVATIVE | | Material: CLEAR PINE |
| Scale: 1"=1" | Date: 1/18/2002 | THIS DRAWING AND ITS CONTENTS ARE THE PROPERTY OF EAGLE WINDOW & DOOR. NO USE OR REPRODUCTION OF THE CONTENTS OF THIS DOCUMENT IS PERMITTED WITHOUT THE EXPRESS WRITTEN PERMISSION OF EAGLE WINDOW & DOOR. | | REVISION: 21YA |
| Drafter: AWW | DCN# 0589 | | | 3 |

- NOTE: 1. UNLESS OTHERWISE SPECIFIED, ALL DIMENSIONS SHOWN ARE IN INCHES AND ALL TOLERANCES ARE TO BE: DEC. ± 0.005 ; FRAC. $\pm 1/64$; ANGLES $\pm 1/2^\circ$.
 2. L = FRAME WIDTH.



| DOUBLE HUNG | |
|-------------|----|
| FRAME WIDTH | L |
| 20 | 20 |
| 24 | 24 |
| 28 | 28 |
| 30 | 30 |
| 32 | 32 |
| 36 | 36 |
| 40 | 40 |
| 44 | 44 |
| 48 | 48 |
| 60 | 60 |



Architectural Testing

Test sample complies with these details.
 Deviations are noted.

Report# 93120
 Date 5/21-6/10/07 Tech TG

THIS DRAWING AND ITS CONTENTS ARE THE PROPERTY OF EAGLE WINDOW & DOOR. NO USE OR REPRODUCTION OF THE CONTENTS OF THIS DOCUMENT IS PERMITTED WITHOUT THE EXPRESS WRITTEN PERMISSION OF EAGLE WINDOW & DOOR.

TITLE: '07 DOUBLE HUNG
 THERMAL BLOCK

FINISH: PRESERVATIVE

MATL: EDGE GLUED AND
 FINGER JOINTED PINE

DFT: tnies SCALE: 1=1

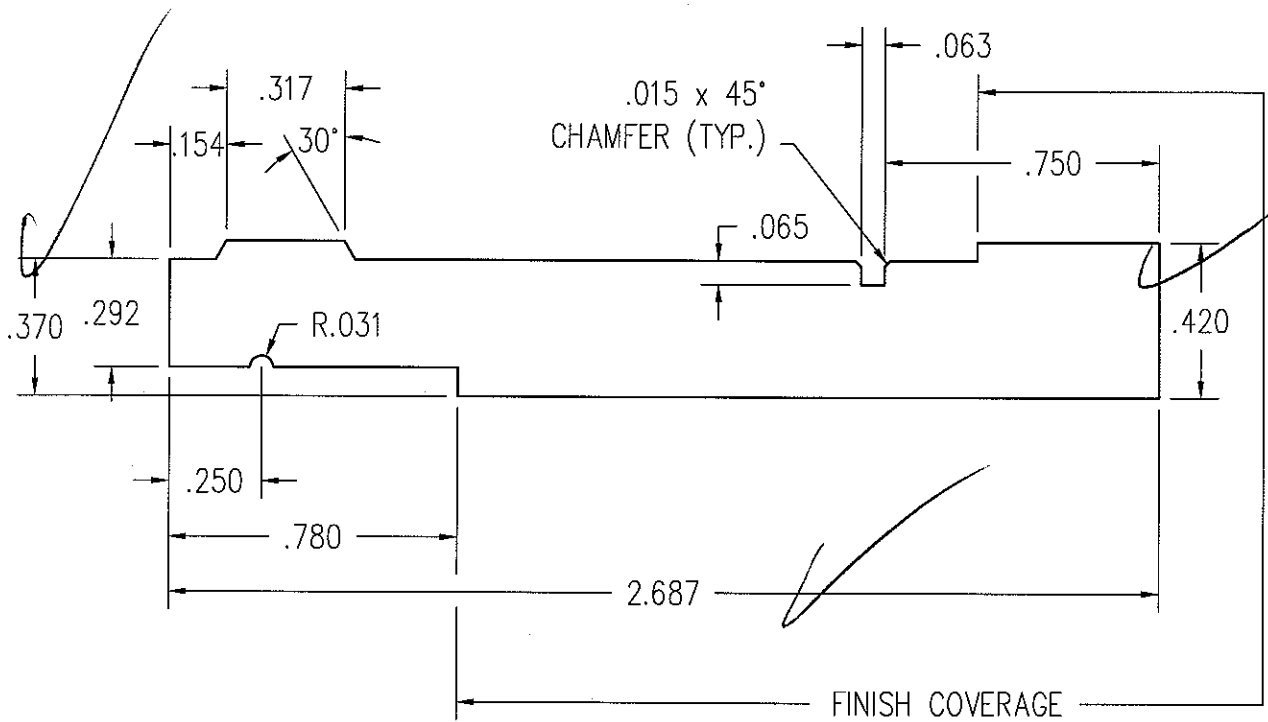
| | | | | | | |
|----|-----------------|-----|------|--------|-----------------|------------|
| 01 | UPDATED PROFILE | KJS | 0881 | 1/4/07 | DCN: 0881 | DRWG: 20F1 |
| NO | DESCRIPTION | DFT | DOC | DATE | DATE: 9/28/2006 | A 01 OF 01 |

NOTE: 1. UNLESS OTHERWISE SPECIFIED, ALL DIMENSIONS SHOWN ARE IN INCHES AND ALL TOLERANCES ARE TO BE: DEC. ± 0.005 ; FRAC. $\pm 1/64$; ANGLES $\pm 1/2^\circ$.



Test sample complies with these details.
Deviations are noted.

Report# 73120
Date 5/29-6/6/07 Tech TG



THIS DRAWING AND ITS CONTENTS ARE THE PROPERTY OF EAGLE WINDOW & DOOR. NO USE OR REPRODUCTION OF THE CONTENTS OF THIS DOCUMENT IS PERMITTED WITHOUT THE EXPRESS WRITTEN PERMISSION OF EAGLE WINDOW & DOOR.

TITLE: '07 SILL STOP

FINISH:

MATL: CLEAR PINE

DFT: tnies SCALE: 2=1

DCN: 0881 DRWG: 20F8

DATE: 12/12/2006 A 01 OF 02

| NO | DESCRIPTION | DFT | DOC | DATE |
|----|-------------|-----|-----|------|
| | | | | |

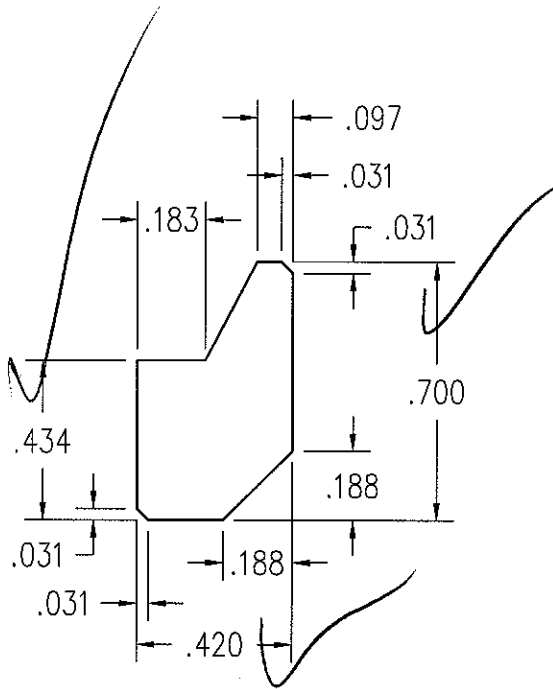
- NOTE: 1. UNLESS OTHERWISE SPECIFIED, ALL DIMENSIONS SHOWN ARE IN INCHES AND ALL TOLERANCES ARE TO BE: DEC. ± 0.005 ; FRAC. $\pm 1/64$; ANGLES $\pm 1/2^\circ$.
 2. L = AFH - 4.344.



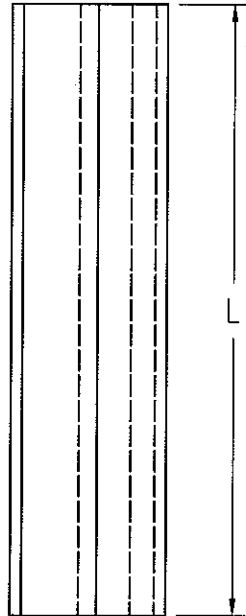
Architectural Testing

Test sample complies with these details.
 Deviations are noted.

Report# 93120
 Date 5/29-6/10/07 Tech TG



| FRAME HEIGHT | L |
|--------------|---------|
| 72 | 67.656 |
| 78 | 73.656 |
| 84 | 79.656 |
| 90 | 85.656 |
| 96 | 91.656 |
| 102 | 97.656 |
| 108 | 103.656 |
| 114 | 109.656 |
| 120 | 115.656 |



THIS DRAWING AND ITS CONTENTS ARE THE PROPERTY OF EAGLE WINDOW & DOOR. NO USE OR REPRODUCTION OF THE CONTENTS OF THIS DOCUMENT IS PERMITTED WITHOUT THE EXPRESS WRITTEN PERMISSION OF EAGLE WINDOW & DOOR.

TITLE: '07 CSHMV - INTERIOR SIDE STOP

FINISH:

MATL: CLEAR PINE

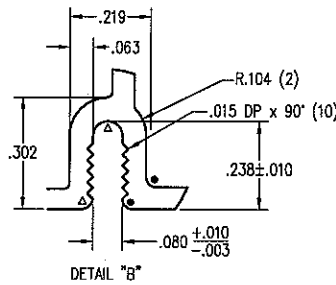
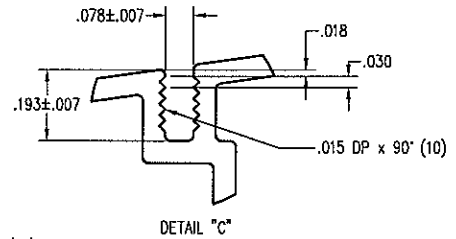
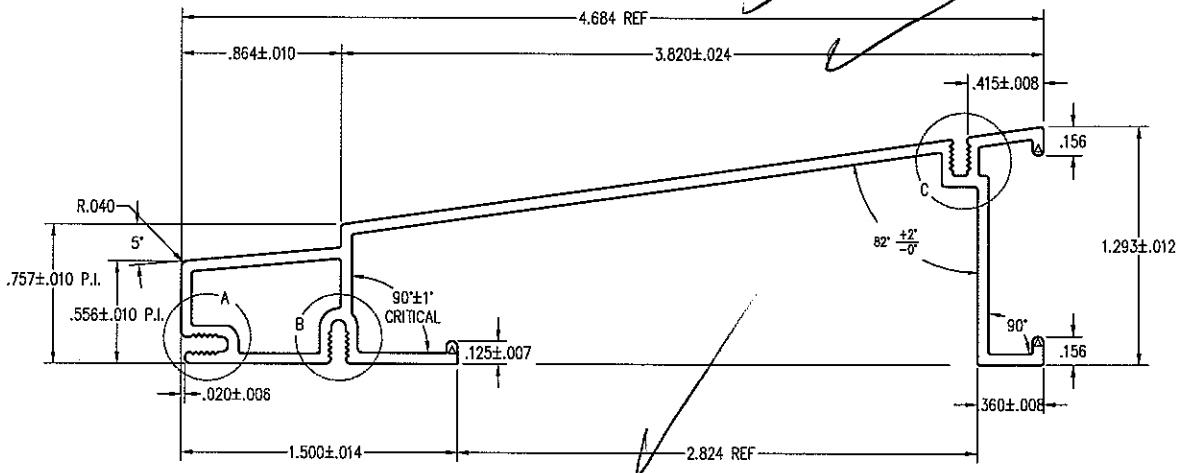
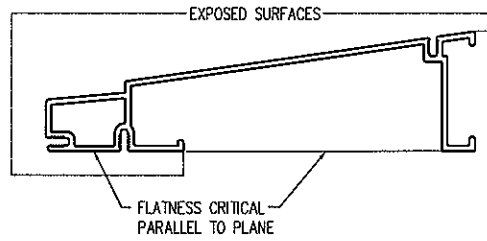
DFT: tnies SCALE: 2=1

DCN: 0881 DRWG: 20FL

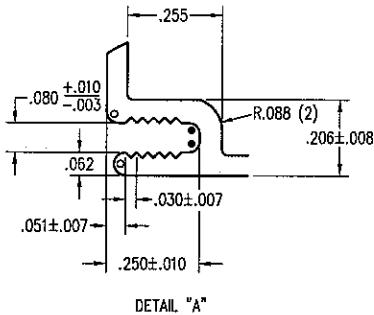
DATE: 2/2/2007 A 01 OF 01

| NO | DESCRIPTION | DFT | DOC | DATE |
|----|-------------|-----|-----|------|
| | | | | |

- NOTE: 1. UNLESS OTHERWISE SPECIFIED, ALL DIMENSIONS SHOWN ARE IN INCHES AND ALL TOLERANCES ARE TO BE: DEC. ± 0.005 ; FRAC. $\pm 1/64$; ANGLES $\pm 1/2^\circ$.
 2. UNLESS OTHERWISE SPECIFIED, WALL THICKNESS IS $.060$.
 3. UNLESS OTHERWISE SPECIFIED BREAK ALL CORNERS $.015$ RADIUS.
 4. AREA = $.572$ SQIN
 5. MILL PART NO. = # M5746 ,
 6. BON-L # EWD-285



- R .028 (6)
- R .031 (2)
- x R .062 (0)
- △ FULL RAD.(4)



Architectural Testing

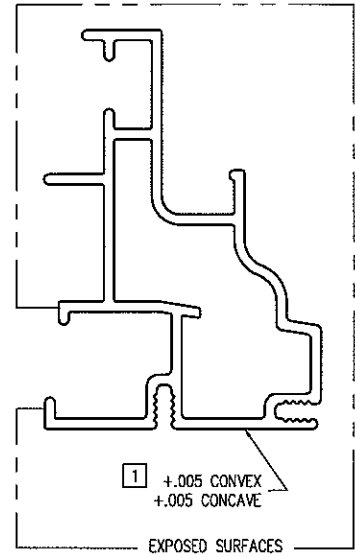
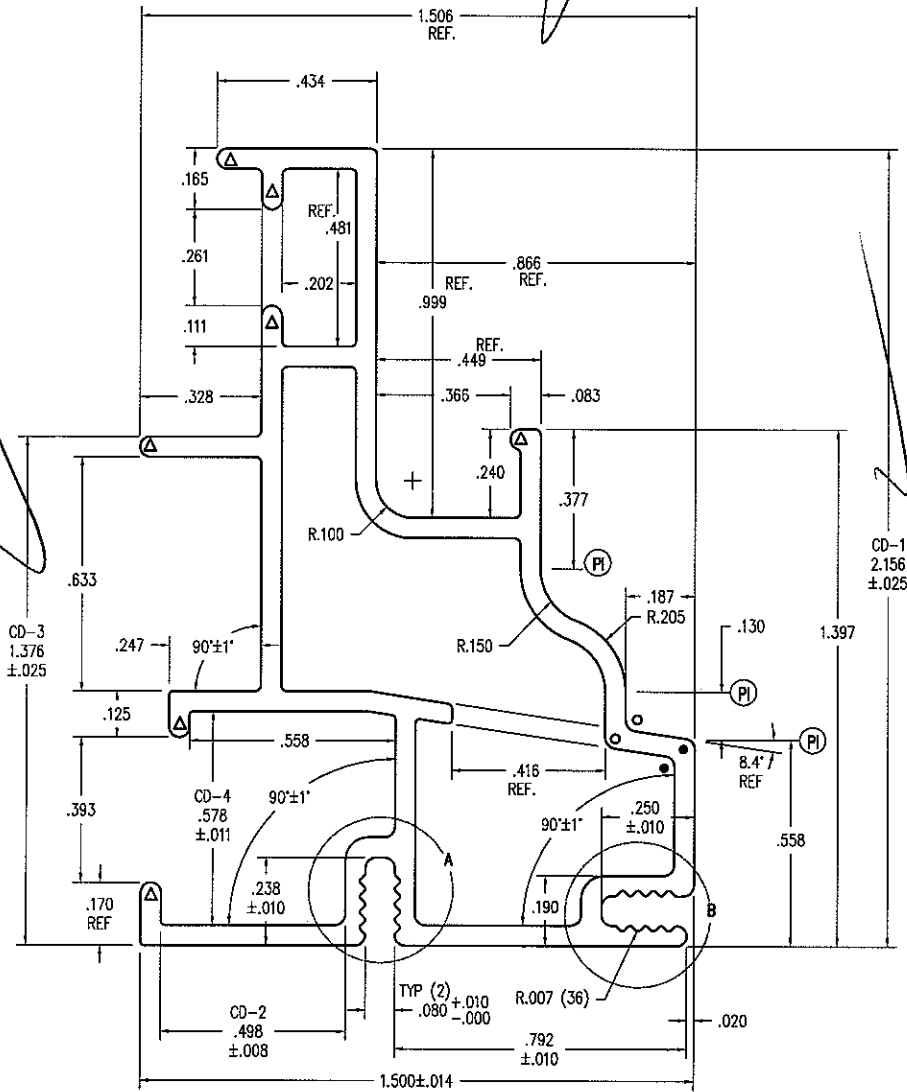
Test sample complies with these details.
 Deviations are noted.

Report# 73120
 Date 5/29-6/1/07 Tech 76

| | |
|--|------------|
| THIS DRAWING AND ITS CONTENTS ARE THE PROPERTY OF EAGLE WINDOW & DOOR. NO USE OR REPRODUCTION OF THE CONTENTS OF THIS DOCUMENT IS PERMITTED WITHOUT THE EXPRESS WRITTEN PERMISSION OF EAGLE WINDOW & DOOR. | |
| TITLE: CDH/CDF/CSW | |
| FINISH: SILL COVER (HOLLOW NOSE) EAGLE'S STD. COLORS | |
| MATERIAL: 6063 T-6 ALUMINUM | |
| DFT: PUB | SCALE: 1=1 |
| DCN: 0734 | DRWG: A571 |
| DATE: 7/23/2002 | C 01 OF 02 |

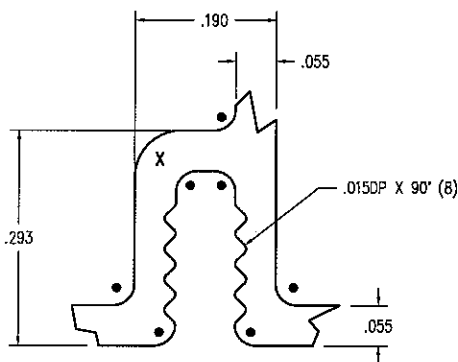
| NO | DESCRIPTION | DFT | DOC | DATE |
|----|-------------|-----|-----|------|
| | | | | |

- NOTE: 1. UNLESS OTHERWISE SPECIFIED, ALL DIMENSIONS SHOWN ARE IN INCHES AND ALL TOLERANCES ARE TO BE: DEC. ± 0.05 ; FRAC. $\pm 1/64$; ANGLES $\pm 1/2^\circ$.
 2. UNLESS OTHERWISE SPECIFIED, WALL THICKNESS IS $.055$.
 3. UNLESS OTHERWISE SPECIFIED, BREAK ALL CORNERS $.010$ RADIUS.
 4. AREA = $.463$ SQ.IN.
 5. MILL PART NO. = #A5740

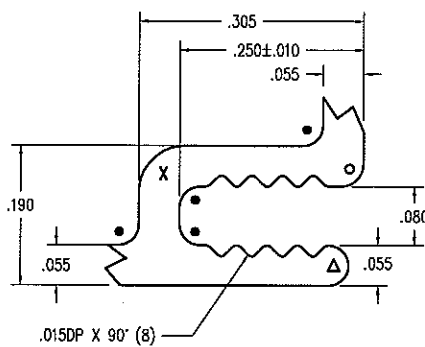


- R .028 (13)
- R .031 (3)
- X R .062 (2)
- △ FULL RAD.(5)

Architectural Testing
 Test sample complies with these details.
 Deviations are noted.
 Report# 73120
 Date 5/29-6/6/2001 Tech JG



DETAIL "A"



DETAIL "B"

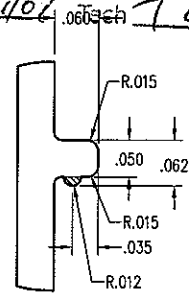
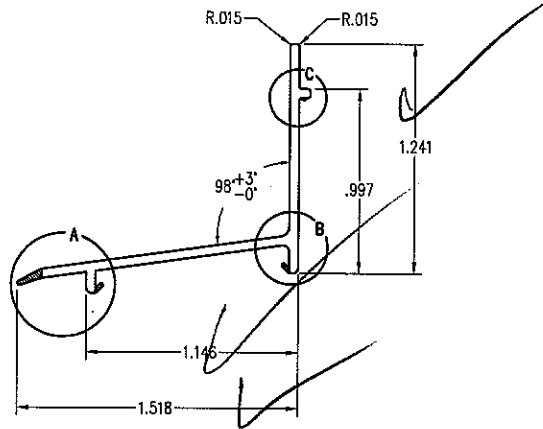
| | |
|--|-----------------------|
| THIS DRAWING AND ITS CONTENTS ARE THE PROPERTY OF EAGLE WINDOW & DOOR. NO USE OR REPRODUCTION OF THE CONTENTS OF THIS DOCUMENT IS PERMITTED WITHOUT THE EXPRESS WRITTEN PERMISSION OF EAGLE WINDOW & DOOR. | |
| TITLE: | CHW/CHD/CSD |
| FINISH: | HEAD SIDE FRAME COVER |
| MATL: | 6063 T-6 ALUMINUM |
| DFT: | AWW |
| SCALE: | 2=1 |

| | | | | | | | | |
|----|------------------------------|-----|------|----------|------|-----------|-------|----------|
| 01 | ADDED/CHG'D DIM. & TOLERANCE | TWN | 0778 | 4/4/2003 | DCN: | 0867 | DRWG: | AS14 |
| NO | DESCRIPTION | DFT | DOC | DATE | DATE | 11/7/2001 | C | 01 OF 03 |

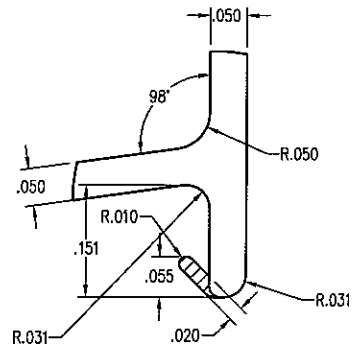
NOTE: 1. UNLESS OTHERWISE SPECIFIED, ALL DIMENSIONS SHOWN ARE IN INCHES AND ALL TOLERANCES ARE TO BE: DEC. ± 0.005 ; FRAC. $\pm 1/64$; ANGLES $\pm 1/2^\circ$.
 2. TYPICAL RIGID WALL THICKNESS: .050.
 3. TYPICAL FLEXIBLE WALL THICKNESS: .020.

Test sample complies with these details.
 Deviations are noted.

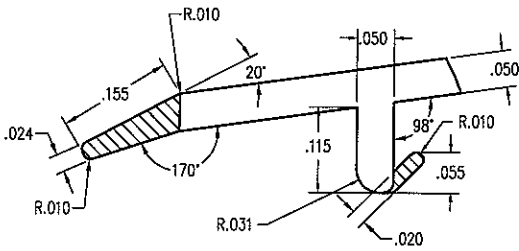
Report# 93120
 Date 5/29-6/10/07 TB



DETAIL C
 SCALE X 4



DETAIL B
 SCALE X 4



DETAIL A
 SCALE X 4

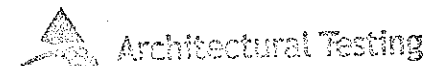
| TOLERANCES (UNLESS NOTED) | |
|---------------------------|---------------|
| .000 - .125 | ± 0.010 |
| .125 - .500 | ± 0.015 |
| .500 - 2.00 | ± 0.020 |
| 2.00 - 4.00 | ± 0.030 |
| 4.00 - 5.00 | ± 0.040 |
| WALLS | ± 0.005 |
| ANGLES | $\pm 3^\circ$ |

THIS DRAWING AND ITS CONTENTS ARE THE PROPERTY OF EAGLE WINDOW & DOOR. NO USE OR REPRODUCTION OF THE CONTENTS OF THIS DOCUMENT IS PERMITTED WITHOUT THE EXPRESS WRITTEN PERMISSION OF EAGLE WINDOW & DOOR.

TITLE: 07 SILL WATER DAM
 FINISH:
 MATL: BEIGE VINYL
 DFT: ksmith SCALE: 1=1
 DCN: 0881 DRWG: A74H
 DATE: 2/28/2007 C 01 OF 02

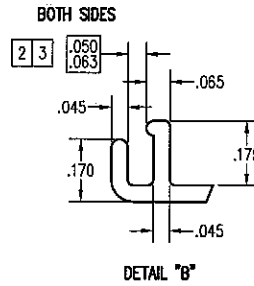
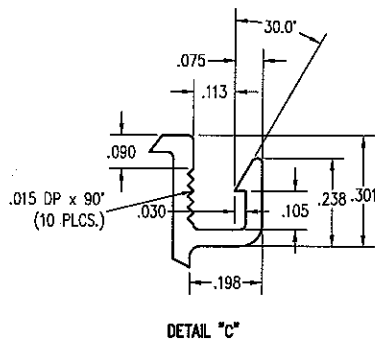
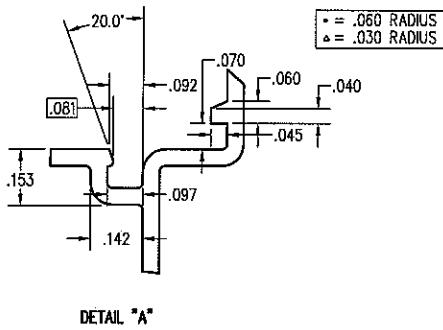
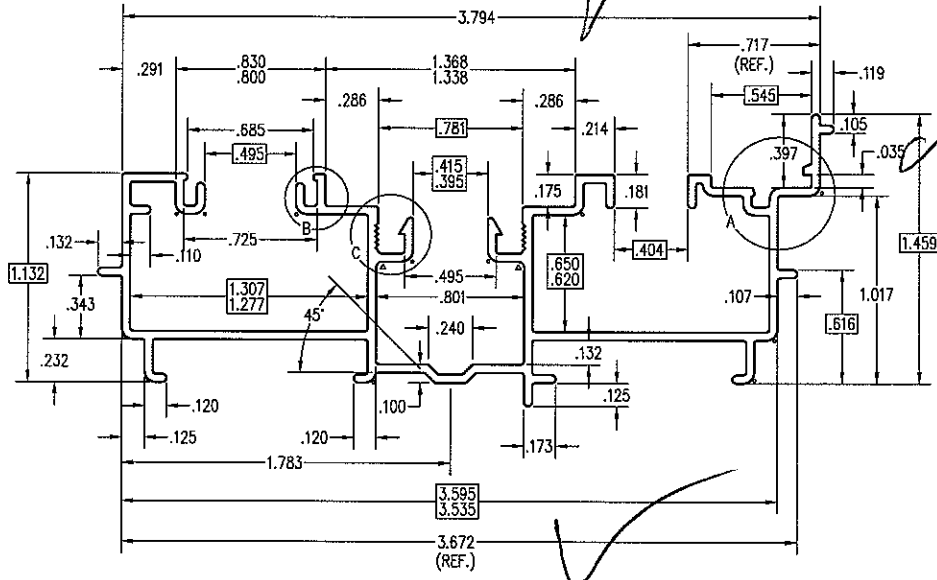
| NO | DESCRIPTION | DFT | DOC | DATE |
|----|-------------|-----|-----|------|
| | | | | |

- NOTE: 1. UNLESS OTHERWISE SPECIFIED, ALL DIMENSIONS SHOWN ARE IN INCHES AND ALL TOLERANCES ARE TO BE: DEC. ± 0.005 ; FRAC. $\pm 1/64$; ANGLES $\pm 1/2^\circ$.
2. WALL THICKNESS = .045
3. AREA = .569 SQ. IN.
4. ALL UNSPECIFIED RADII = .015
5. DIMENSIONS MARKED IN A [BOX] ARE CRITICAL.



Test sample complies with these details.
Deviations are noted.

Report# 73120
Date 5/22-6/1/02 Tech AG



PVC TOLERANCES

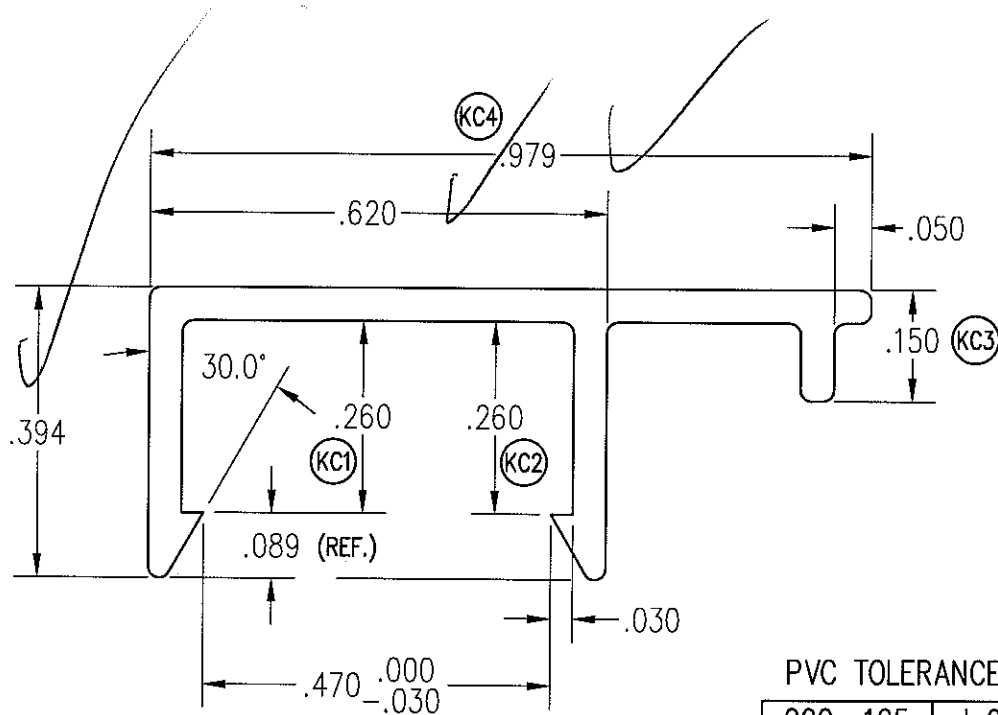
| | |
|-----------|------------|
| .000-.125 | $\pm .010$ |
| .125-.500 | $\pm .015$ |
| .500-2.00 | $\pm .020$ |
| 2.00-4.00 | $\pm .030$ |
| 4.00-5.00 | $\pm .040$ |
| WALLS | $\pm .005$ |
| ANGLES | $\pm 3'$ |

THIS DRAWING AND ITS CONTENTS ARE THE PROPERTY OF
EAGLE WINDOW & DOOR. NO USE OR REPRODUCTION OF THE
CONTENTS OF THIS DOCUMENT IS PERMITTED WITHOUT THE
EXPRESS WRITTEN PERMISSION OF EAGLE WINDOW & DOOR.

TITLE: CHVET/WDHVEI
RIGID JAMBLINER
FINISH: BEIGE, WHITE
MATERIAL: RIGID PVC

| | | | | | | | |
|----|---------------------------|-----|--------------------|------|--------|-----------|------------|
| 03 | CHANGED DIM/TOLERANCE | TWN | 0805 17/9/2003 | | | | |
| 02 | ADDED .046 CRITICAL DIM | PJB | 0784 5/27/2003DFT: | AWW | SCALE: | 1=1 | |
| 01 | ADDED CRITICAL INDICATORS | TWN | 0730 2/20/2003DCN: | 0589 | DRWG: | A48X | |
| NO | DESCRIPTION | DFT | DOC | DATE | DATE: | 6/21/2001 | C 01 OF 05 |

- NOTE: 1. UNLESS OTHERWISE SPECIFIED, ALL DIMENSIONS SHOWN ARE IN INCHES AND ALL TOLERANCES ARE TO BE: DEC. $\pm .005$; FRAC. $\pm 1/64$; ANGLES $\pm 1/2^\circ$.
2. WALL THICKNESS = .045.
3. AREA = .0808 SQ. IN.
4. ALL RADII = .015.



PVC TOLERANCES

| | |
|-----------|---------------|
| .000-.125 | $\pm .010$ |
| .125-.500 | $\pm .015$ |
| .500-2.00 | $\pm .020$ |
| 2.00-4.00 | $\pm .030$ |
| 4.00-5.00 | $\pm .040$ |
| WALLS | $\pm .005$ |
| ANGLES | $\pm 3^\circ$ |



Architectural Testing

Test sample complies with these details.
Deviations are noted.

Report# 73170
Date 5/29/07 Tech AB

THIS DRAWING AND ITS CONTENTS ARE THE PROPERTY OF EAGLE WINDOW & DOOR. NO USE OR REPRODUCTION OF THE CONTENTS OF THIS DOCUMENT IS PERMITTED WITHOUT THE EXPRESS WRITTEN PERMISSION OF EAGLE WINDOW & DOOR.

TITLE: CDHV/WDHV
PVC JAMBLINER COVER

FINISH: BEIGE, WHITE

MATL: RIGID PVC

DFT: PJB SCALE: 4=1

DCN: 0589 DRWG: A48Y

DATE: 6/21/2001 A 01 OF 03

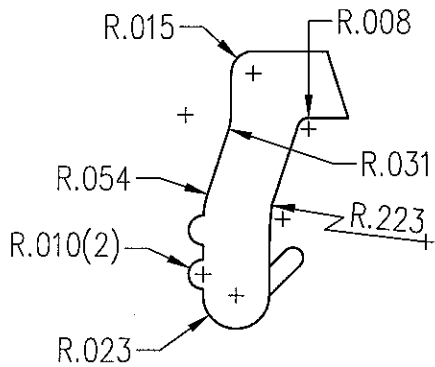
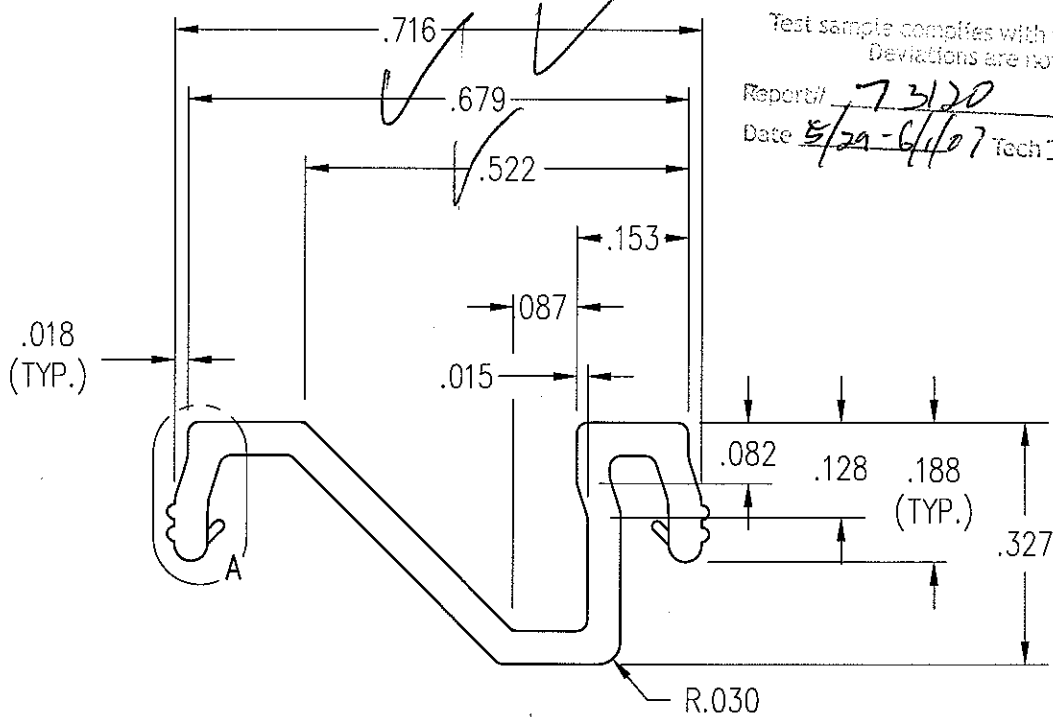
| | | | | |
|----|--------------------------------|-----|-----|----------|
| 01 | ADDED CRITICAL DIM & TOL. BLK. | PJB | PRE | 6/4/2002 |
| NO | DESCRIPTION | DFT | DOC | DATE |

- NOTE: 1. UNLESS OTHERWISE SPECIFIED, ALL DIMENSIONS SHOWN ARE IN INCHES AND ALL TOLERANCES ARE TO BE: DEC. ± 0.005 ; FRAC. $\pm 1/64$; ANGLES $\pm 1/2^\circ$.
2. WALL THICKNESS IS .045.
3. ALL RADII = .015, UNLESS NOTED.

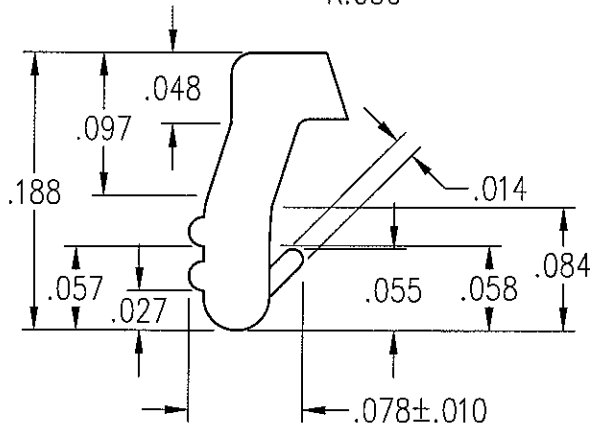
Architectural Testing

Test sample complies with these details.
Deviations are noted.

Report# 73120
Date 5/29-6/10/07 Tech T6



DETAIL "A" -- RADII



DETAIL "A"

PVC TOLERANCES

| | |
|-----------|---------------|
| .000-.125 | ± 0.010 |
| .125-.500 | ± 0.015 |
| .500-2.00 | ± 0.020 |
| 2.00-4.00 | ± 0.030 |
| 4.00-5.00 | ± 0.040 |
| WALLS | ± 0.005 |
| ANGLES | $\pm 3^\circ$ |

THIS DRAWING AND ITS CONTENTS ARE THE PROPERTY OF EAGLE WINDOW & DOOR. NO USE OR REPRODUCTION OF THE CONTENTS OF THIS DOCUMENT IS PERMITTED WITHOUT THE EXPRESS WRITTEN PERMISSION OF EAGLE WINDOW & DOOR.

TITLE: '07 CDHV
SPRING COVER

FINISH: BEIGE, WHITE

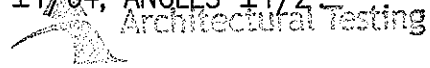
MATL: PVC

DFT: ksmith SCALE: 4=1

DCN: 0881 DRWG: A71N

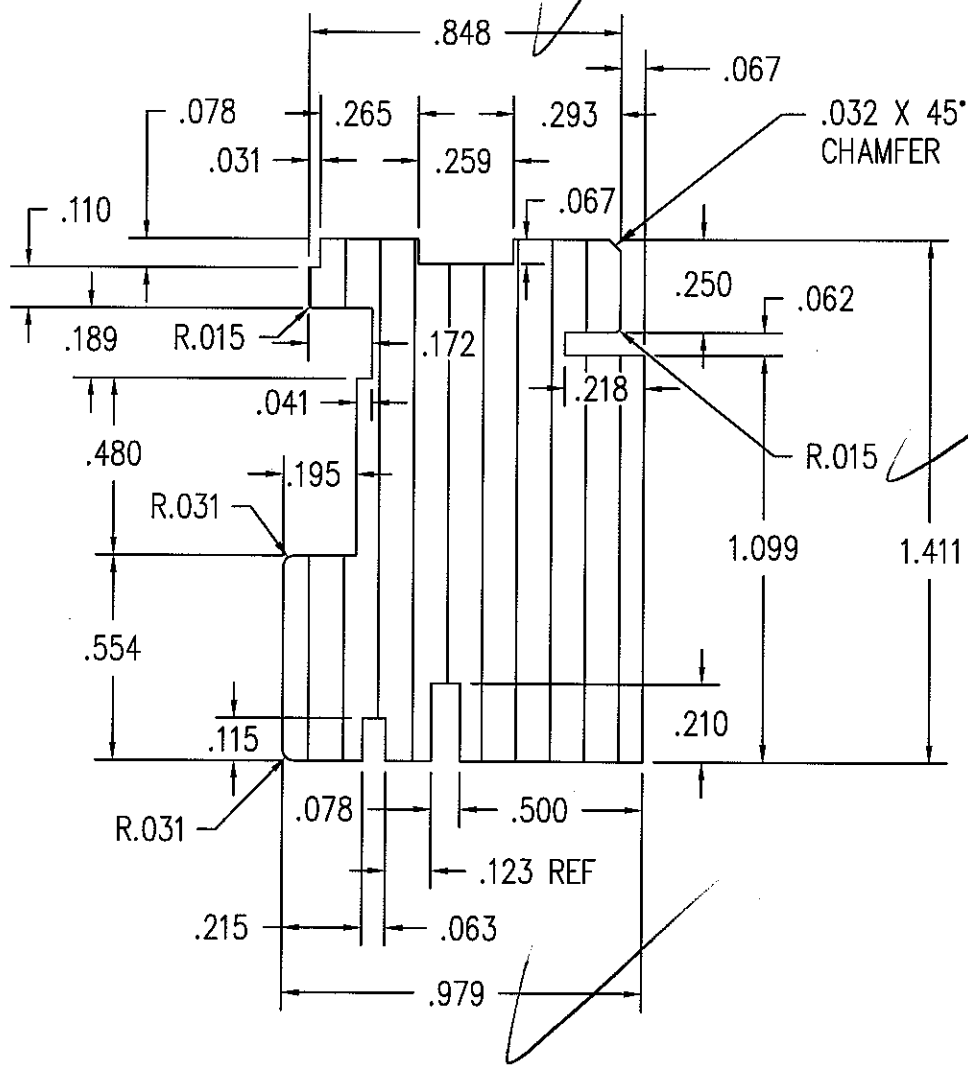
| | | | | | | | |
|----|-------------|-----|-----|------|-----------------|---|----------|
| NO | DESCRIPTION | DFT | DOC | DATE | DATE: 1/29/2007 | A | 01 OF 02 |
|----|-------------|-----|-----|------|-----------------|---|----------|

NOTE: 1. UNLESS OTHERWISE SPECIFIED, ALL DIMENSIONS SHOWN ARE IN INCHES AND ALL TOLERANCES ARE TO BE: DEC. ± 0.005 ; FRAC. $\pm 1/64$; ANGLES $\pm 1/2^\circ$.
 2. DOUGLAS FIR LVL IS REQUIRED.



Test sample complies with these details.
 Deviations are noted.

Report# 73120
 Date 5/29-6/10/07 Tech TB



THIS DRAWING AND ITS CONTENTS ARE THE PROPERTY OF EAGLE WINDOW & DOOR. NO USE OR REPRODUCTION OF THE CONTENTS OF THIS DOCUMENT IS PERMITTED WITHOUT THE EXPRESS WRITTEN PERMISSION OF EAGLE WINDOW & DOOR.

TITLE: '07 CLAD DOUBLE HUNG UPPER CHECK RAIL

FINISH:

MATL: SEE NOTE #2

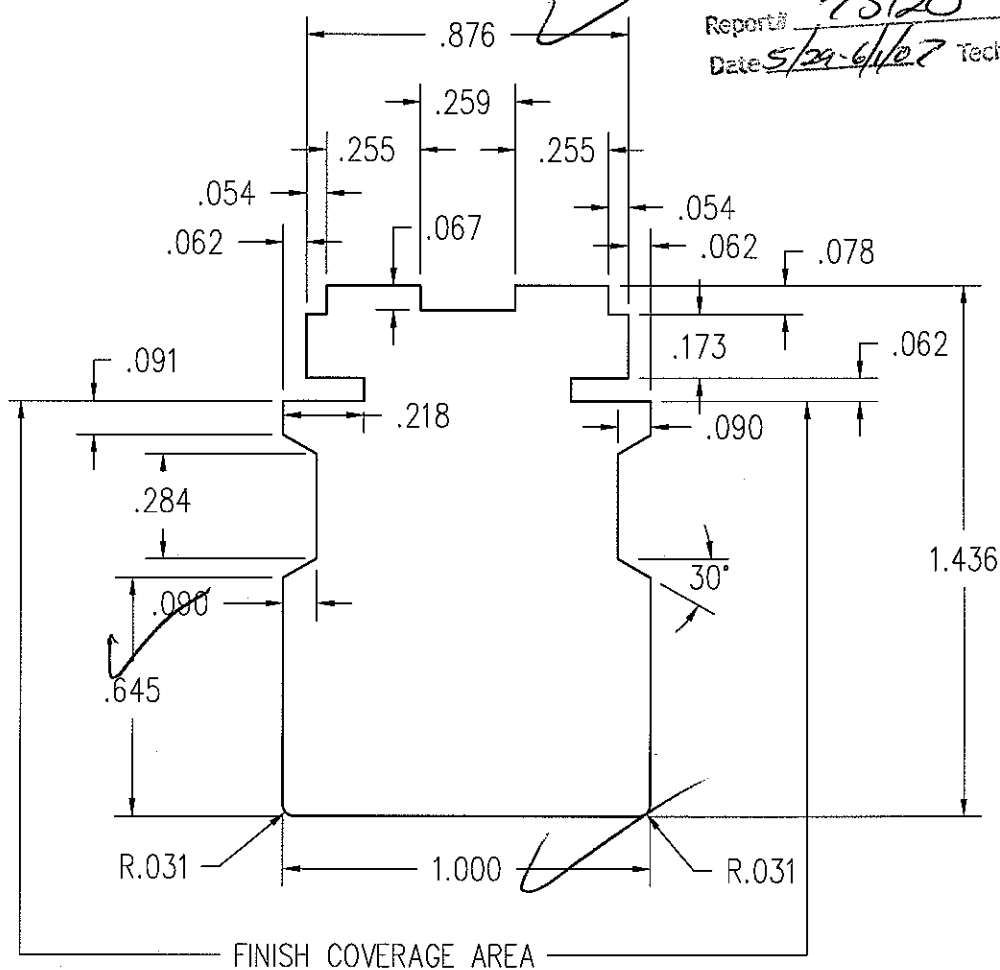
| | | | | | | |
|----|-----------------|-----|------|---------|-----------------|------------|
| 03 | CHANGED PROFILE | TWN | PRE | 3/20/07 | | |
| 02 | REVISED PROFILE | TWN | PRE | 1/15/07 | DFT: tnies | SCALE: 2=1 |
| 01 | UPDATED PROFILE | KJS | 0881 | 1/4/07 | DCN: 0881 | DRWG: 20F2 |
| NO | DESCRIPTION | DFT | DOC | DATE | DATE: 9/28/2006 | A 01 OF 02 |

NOTE: 1. UNLESS OTHERWISE SPECIFIED, ALL DIMENSIONS SHOWN ARE IN INCHES AND ALL TOLERANCES ARE TO BE: DEC. ± 0.005 ; FRAC. $\pm 1/64$; ANGLES $\pm 1/2^\circ$.

Architectural Testing

Test sample complies with these details.
Deviations are noted.

Report# 73120
Date 5/29-6/6/07 Tech T6



THIS DRAWING AND ITS CONTENTS ARE THE PROPERTY OF EAGLE WINDOW & DOOR. NO USE OR REPRODUCTION OF THE CONTENTS OF THIS DOCUMENT IS PERMITTED WITHOUT THE EXPRESS WRITTEN PERMISSION OF EAGLE WINDOW & DOOR.

TITLE: '07 CDHV/CSHV - STILE/RAIL

FINISH: PRESERVATIVE

MATL: CLEAR PINE

DFT: ksmith SCALE: 2=1

DCN: 0881 DRWG: 20F4

DATE: 1/4/2007 A 01 OF 06

| NO | DESCRIPTION | DFT | DOC | DATE |
|----|-------------|-----|-----|------|
|----|-------------|-----|-----|------|

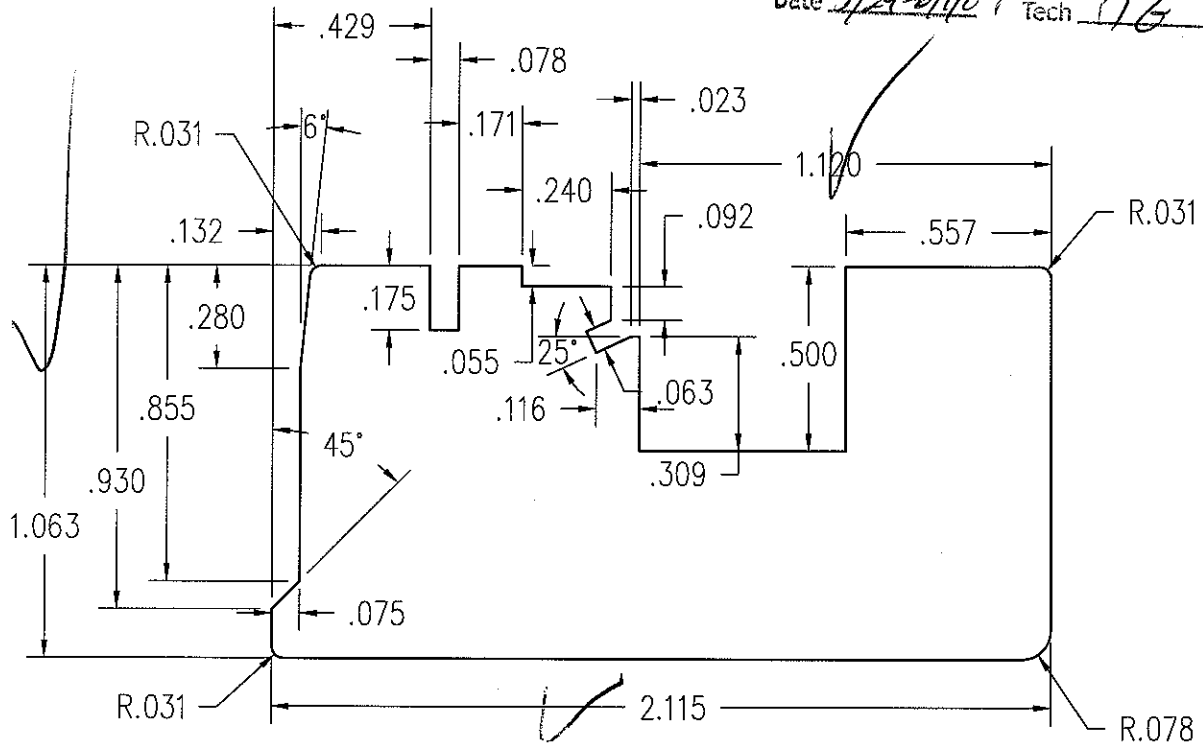
NOTE: 1. UNLESS OTHERWISE SPECIFIED, ALL DIMENSIONS SHOWN ARE IN INCHES AND ALL TOLERANCES ARE TO BE: DEC. ± 0.005 ; FRAC. $\pm 1/64$; ANGLES $\pm 1/2^\circ$.



Architectural Testing

Test sample complies with these details.
Deviations are noted.

Report# 73120
Date 5/29-6/1/07 Tech TG



THIS DRAWING AND ITS CONTENTS ARE THE PROPERTY OF EAGLE WINDOW & DOOR. NO USE OR REPRODUCTION OF THE CONTENTS OF THIS DOCUMENT IS PERMITTED WITHOUT THE EXPRESS WRITTEN PERMISSION OF EAGLE WINDOW & DOOR.

TITLE: '07 CLAD DOUBLE HUNG LOWER CHECK RAIL

FINISH:

MATL: CLEAR PINE

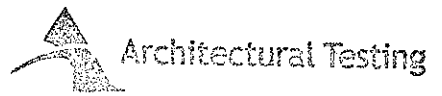
DFT: tnies SCALE: 2=1

DCN: 0881 DRWG: 20F5

DATE: 9/28/2006 A 01 OF 02

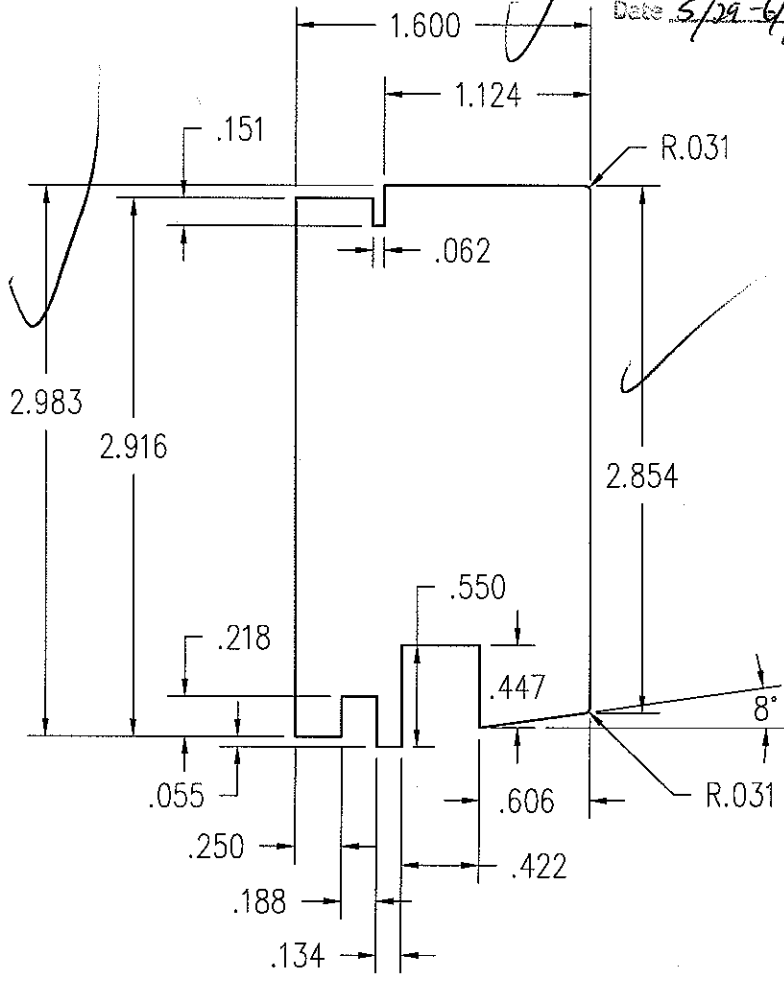
| | | | | |
|----|-----------------|-----|------|--------|
| 01 | UPDATED PROFILE | KJS | 0881 | 1/4/07 |
| NO | DESCRIPTION | DFT | DOC | DATE |

NOTE: 1. UNLESS OTHERWISE SPECIFIED, ALL DIMENSIONS SHOWN ARE IN INCHES AND ALL TOLERANCES ARE TO BE: DEC. ±.005; FRAC. ±1/64; ANGLES ±1/2°.



Test sample complies with these details.
Deviations are noted.

Report# 73100
Date 5/29-4/07 Tech 16



THIS DRAWING AND ITS CONTENTS ARE THE PROPERTY OF EAGLE WINDOW & DOOR. NO USE OR REPRODUCTION OF THE CONTENTS OF THIS DOCUMENT IS PERMITTED WITHOUT THE EXPRESS WRITTEN PERMISSION OF EAGLE WINDOW & DOOR.

TITLE: '07 CDHV, CDHF
WIDE RAIL

FINISH:

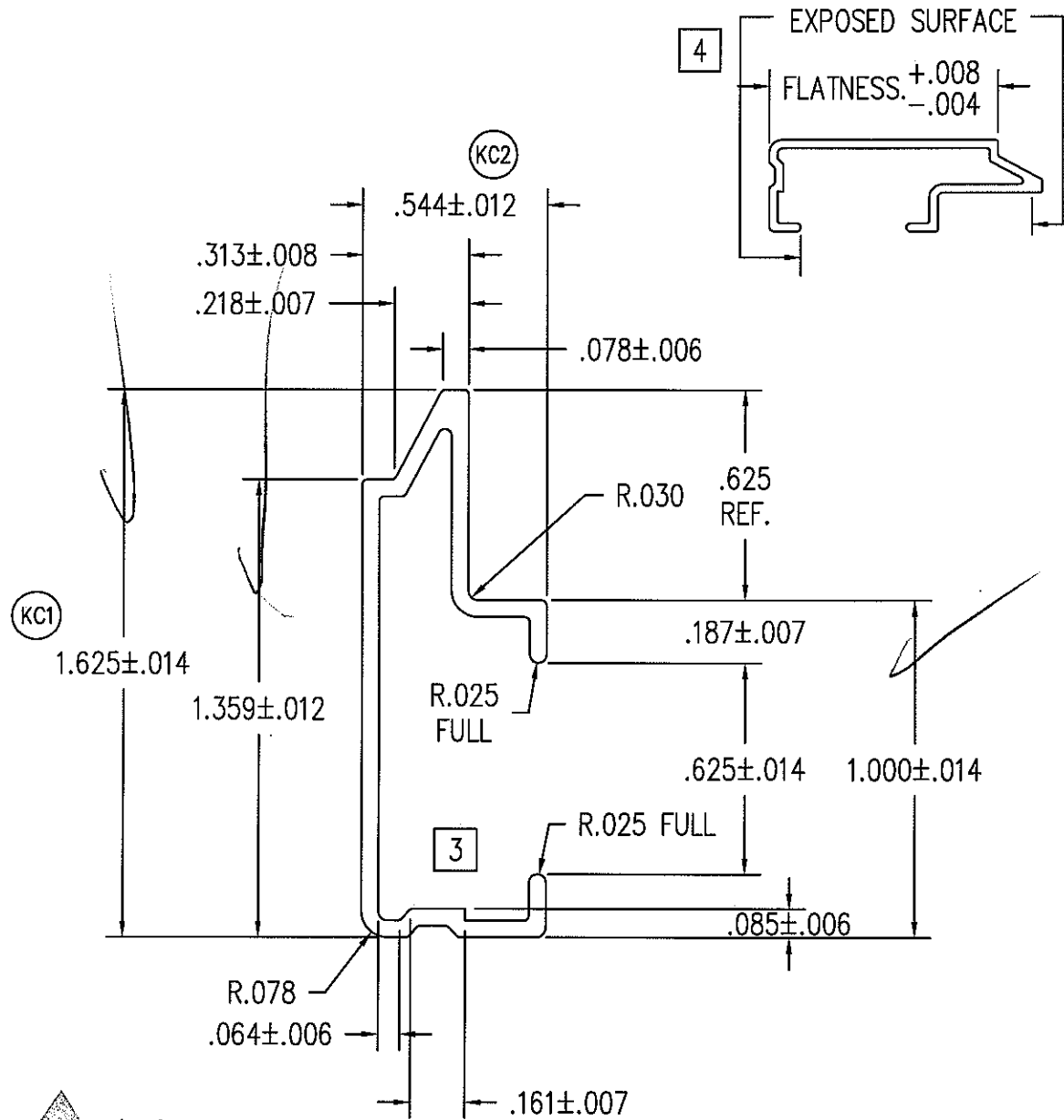
MATL: CLEAR PINE

DFT: tnies SCALE: 1=1

DCN: 0881 DRWG: 20E8

| | | | | | | |
|----|-------------|-----|-----|------|-----------------|------------|
| NO | DESCRIPTION | DFT | DOC | DATE | DATE: 9/29/2006 | A 01 OF 02 |
|----|-------------|-----|-----|------|-----------------|------------|

- NOTE: 1. UNLESS OTHERWISE SPECIFIED, ALL DIMENSIONS SHOWN ARE IN INCHES AND ALL TOLERANCES ARE TO BE: DEC. ± 0.005 ; FRAC. $\pm 1/64$; ANGLES $\pm 1/2^\circ$.
 2. TYPICAL WALL THICKNESS $.050 \pm .005$.
 3. UNSPECIFIED RADIUS TO BE $.015$.



Architectural Testing
 Test sample complies with these details.
 Deviations are noted.

Report# 73120
 Date 5/29-6/1/07 Tech TG

THIS DRAWING AND ITS CONTENTS ARE THE PROPERTY OF EAGLE WINDOW & DOOR. NO USE OR REPRODUCTION OF THE CONTENTS OF THIS DOCUMENT IS PERMITTED WITHOUT THE EXPRESS WRITTEN PERMISSION OF EAGLE WINDOW & DOOR.
 TITLE: CDHV, CDHF, CSW, CDHVET SASH COVER
 FINISH: EAGLE'S STD. COLORS

| | | | | | | |
|----|------------------------|-----|------|------------|-------|---------------------------------|
| 05 | ADDED E-TILT DHG | RJW | 0589 | 6/26/2002 | | |
| 04 | ADDED TOLERANCE SPECS. | TWN | 0595 | 8/31/2001 | MATL: | 6063 T-6 ALUMINUM OR EQUIVALENT |
| 03 | REVISED PROFILE | CEL | 0366 | 10/27/1998 | DFT: | GDE SCALE: 2=1 |
| 02 | CHG'D DESCRIPTION | CEL | 0247 | 4/14/1997 | DCN: | 0073 DRWG: A16K |
| 01 | PROFILE REDESIGNED | BRL | 0215 | 8/29/1995 | DATE: | 3/26/1993 A 01 OF 02 |
| NO | DESCRIPTION | DFT | DOC | DATE | DATE: | 3/26/1993 A 01 OF 02 |

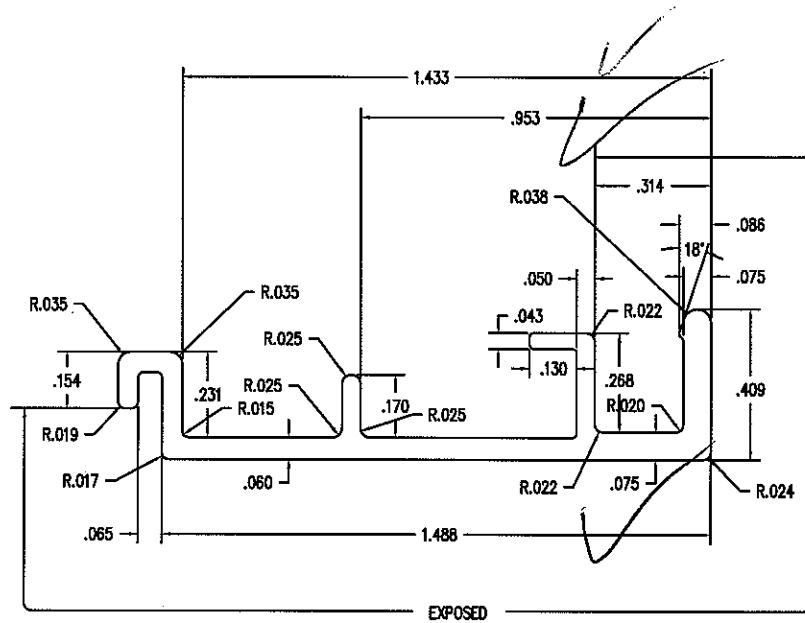
- NOTE: 1. UNLESS OTHERWISE SPECIFIED, ALL DIMENSIONS SHOWN ARE IN INCHES AND ALL TOLERANCES ARE TO BE: DEC. ± 0.005 ; FRAC. $\pm 1/64$; ANGLES $\pm 1/2^\circ$.
 2. TYPICAL WALL THICKNESS .055
 3. ALL RADII TO BE .010 UNLESS OTHERWISE SPECIFIED.
 4. AREA = .171 SQ. IN.



Architectural Testing

Test sample complies with these details.
 Deviations are noted.

Report# 73120
 Date 5/29-6/1/07 Tech. JG

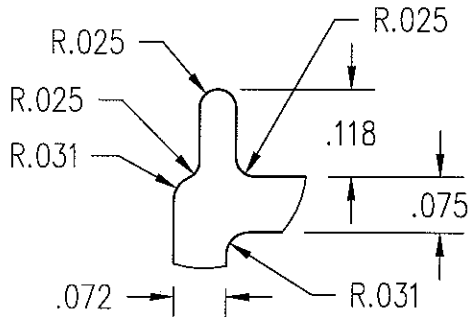


THIS DRAWING AND ITS CONTENTS ARE THE PROPERTY OF EAGLE WINDOW & DOOR. NO USE OR REPRODUCTION OF THE CONTENTS OF THIS DOCUMENT IS PERMITTED WITHOUT THE EXPRESS WRITTEN PERMISSION OF EAGLE WINDOW & DOOR.

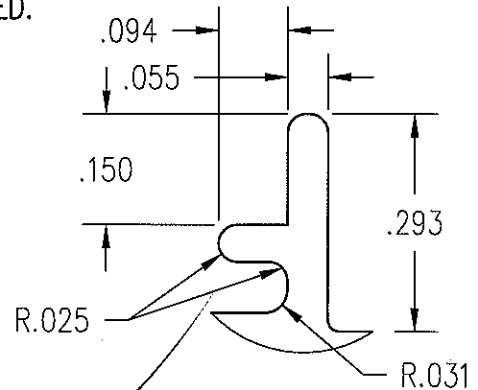
| | |
|---------|-----------------------------|
| TITLE: | 07 CDHV, CSHV CHECK RAIL |
| FINISH: | EAGLE'S STD. COLORS |
| MATL: | 6063 - T6 ALUMINUM |
| DFT: | ksmith SCALE: 2=1 |
| DCN: | 0681 DRWG: A72W |
| DATE: | 1/29/2007 C 01 OF 02 |

| NO | DESCRIPTION | DFT | DOC | DATE |
|----|-------------|-----|-----|------|
| | | | | |

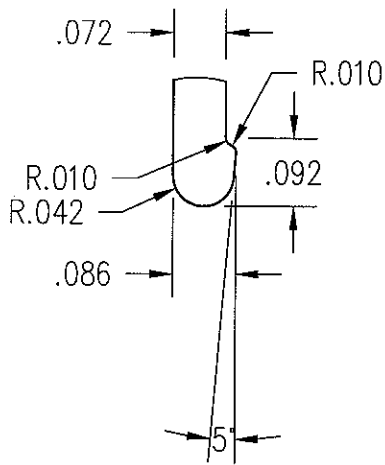
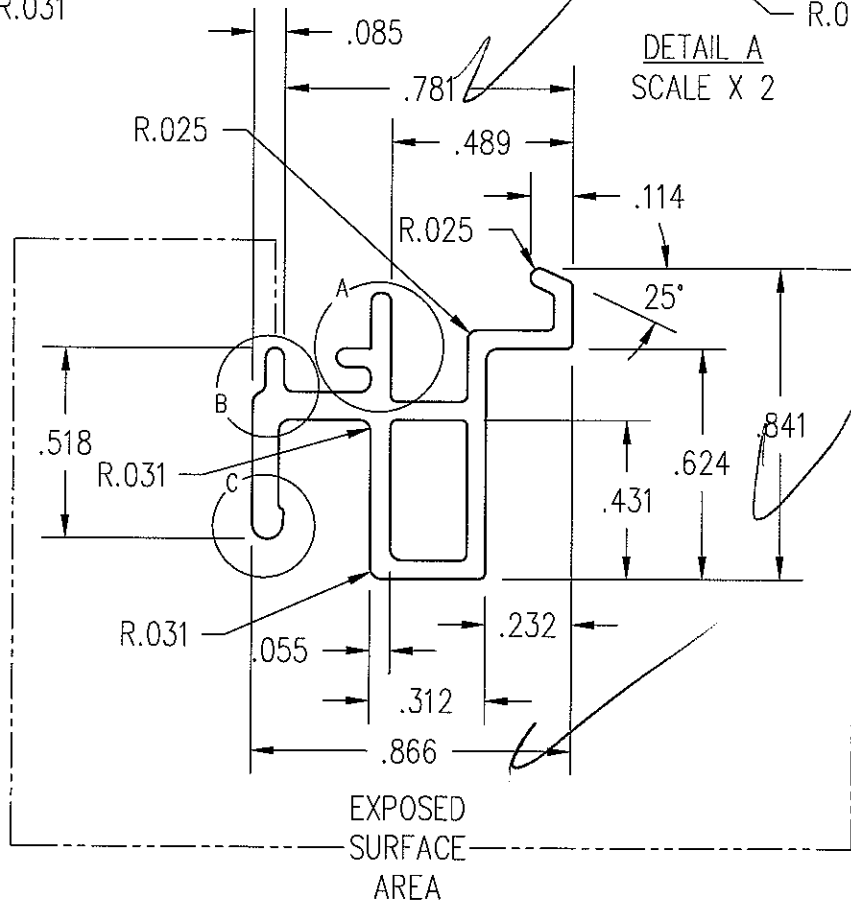
- NOTE: 1. UNLESS OTHERWISE SPECIFIED, ALL DIMENSIONS SHOWN ARE IN INCHES AND ALL TOLERANCES ARE TO BE: DEC. ± 0.005 ; FRAC. $\pm 1/64$; ANGLES $\pm 1/2^\circ$.
 2. WALL THICKNESS TO BE .050 UNLESS OTHERWISE SPECIFIED.
 3. RADIUS TO BE .016 UNLESS OTHERWISE SPECIFIED.



DETAIL B
SCALE X 2



DETAIL A
SCALE X 2



DETAIL C
SCALE X 2



Architectural Testing

Test sample complies with these details:
 Deviations are noted:

Report# 73120
 Date 5/29-6/1/07 Tech TG

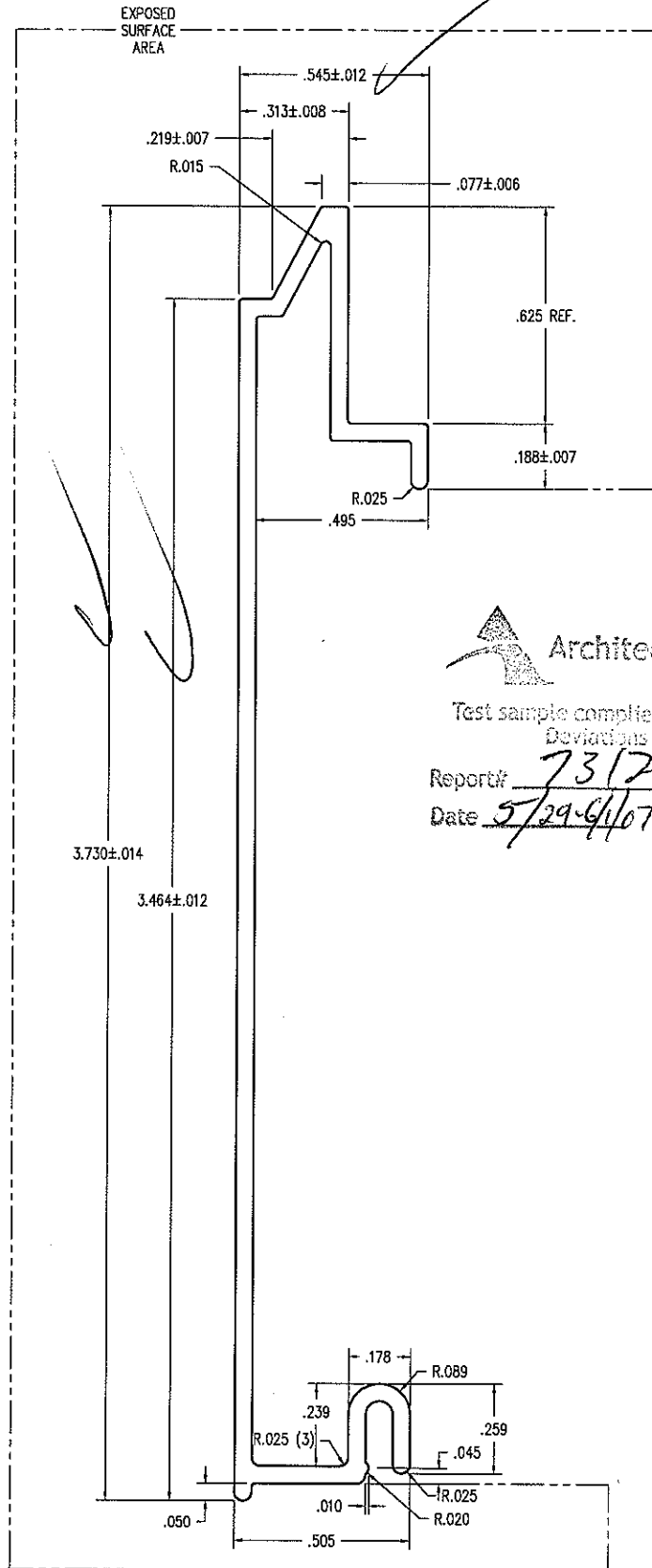
THIS DRAWING AND ITS CONTENTS ARE THE PROPERTY OF EAGLE WINDOW & DOOR. NO USE OR REPRODUCTION OF THE CONTENTS OF THIS DOCUMENT IS PERMITTED WITHOUT THE EXPRESS WRITTEN PERMISSION OF EAGLE WINDOW & DOOR.

TITLE: '07 CDHV
 BOTTOM CHECK RAIL
 FINISH: EAGLE'S STD. COLORS
 MATL: 6063 - T6 ALUMINUM

DFT: ksmith SCALE: 2=1
 DCN: 0881 DRWG: A72X

| NO | DESCRIPTION | DFT | DOC | DATE |
|----|-------------|-----|-----|-----------------|
| | | | | DATE: 1/29/2007 |
| | | | | A 01 OF 02 |

- NOTE: 1. UNLESS OTHERWISE SPECIFIED, ALL DIMENSIONS SHOWN ARE IN INCHES AND ALL TOLERANCES ARE TO BE: DEC. $\pm .010$; FRAC. $\pm 1/64$; ANGLES $\pm 1/2^\circ$.
 2. TYPICAL WALL THICKNESS $.050$.
 3. UNSPECIFIED RADIUS TO BE $.010$.
 4. AREA = $.287$ SQ. IN.



Architectural Testing

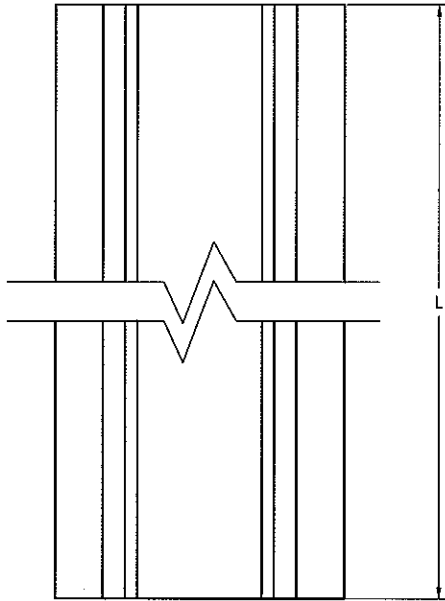
Test sample complies with these details.
 Deviations are noted.

Report# 73170
 Date 5/29-6/1/07 Tech TC

THIS DRAWING AND ITS CONTENTS ARE THE PROPERTY OF EAGLE WINDOW & DOOR. NO USE OR REPRODUCTION OF THE CONTENTS OF THIS DOCUMENT IS PERMITTED WITHOUT THE EXPRESS WRITTEN PERMISSION OF EAGLE WINDOW & DOOR.
 TITLE: 107 CDHV, CDHF
 LOWER RAIL COVER
 FINISH: EAGLE'S STD. COLORS
 MATL: 6063 T-6 ALUMINUM

| | | | | | | | | |
|----|-----------------|-----|-----|----------|-------|-----------|-------|----------|
| 01 | CHANGED PROFILE | TWN | PRE | 12/12/06 | DCN: | 0881 | DRWG: | A71X |
| NO | DESCRIPTION | DFT | DOC | DATE | DATE: | 1/29/2007 | C | 01 OF 02 |

- NOTE: 1. UNLESS OTHERWISE SPECIFIED, ALL DIMENSIONS SHOWN ARE IN INCHES AND ALL TOLERANCES ARE TO BE: DEC. $\pm .005$; FRAC. $\pm 1/64$; ANGLES $\pm 1/2^\circ$.
 2. UNLESS OTHERWISE SPECIFIED, WALL THICKNESS IS .045
 3. UNLESS SPECIFIED, BREAK ALL CORNERS .015.
 4. PROFILE AREA = .075 SQ. IN.
 5. SHG (L) = AFH/2 - 1.188.
 SHG COTT. (L) = AFH/2 + 4.812.
 SHG REV. COTT. (L) = AFH/2 - 7.188.

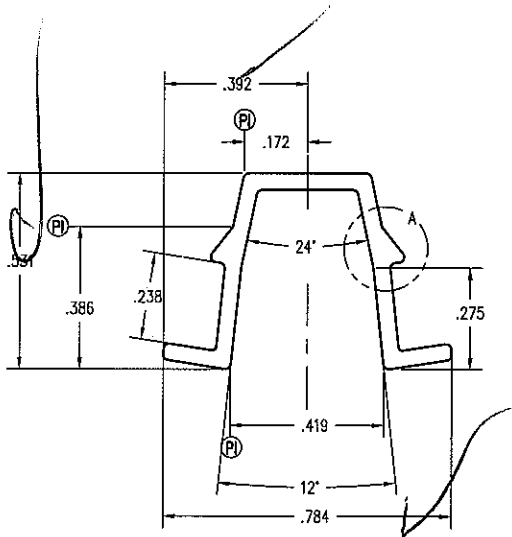


| DOUBLE HUNG | |
|--------------|----|
| FRAME HEIGHT | L |
| 36 | 0 |
| 40 | 0 |
| 48 | 0 |
| 54 | 0 |
| 60 | 0 |
| 66 | 12 |
| 72 | 12 |
| 78 | 12 |
| 84 | 12 |
| 90 | 24 |

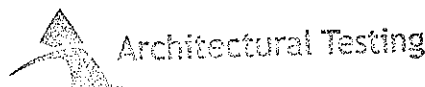
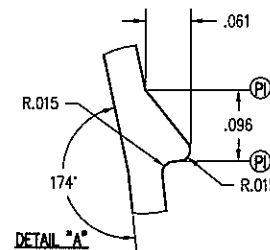
| SINGLE HUNG | |
|--------------|----------|
| FRAME HEIGHT | L |
| 36 | 16 13/16 |
| 40 | 18 13/16 |
| 48 | 22 13/16 |
| 54 | 25 13/16 |
| 60 | 28 13/16 |
| 66 | 31 13/16 |
| 72 | 34 13/16 |
| 78 | 37 13/16 |
| 84 | 40 13/16 |
| 90 | 43 13/16 |

| DH COTT. | |
|--------------|----|
| FRAME HEIGHT | L |
| 36 | 0 |
| 40 | 0 |
| 48 | 0 |
| 54 | 14 |
| 60 | 14 |
| 66 | 14 |
| 72 | 14 |
| 78 | 14 |
| 84 | 14 |
| 90 | 24 |

| DH REV. COTT. | |
|---------------|----|
| FRAME HEIGHT | L |
| 36 | 0 |
| 40 | 0 |
| 48 | 0 |
| 54 | 0 |
| 60 | 0 |
| 66 | 0 |
| 72 | 12 |
| 78 | 12 |
| 84 | 12 |
| 90 | 12 |



3



Test sample complies with these details.
 Deviations are noted.

Report# 73/20
 Date 5/29-4/1/03 Tech TG

| PVC TOLERANCES | |
|----------------|---------------|
| .000-.125 | $\pm .010$ |
| .125-.500 | $\pm .015$ |
| .500-2.00 | $\pm .020$ |
| 2.00-4.00 | $\pm .030$ |
| 4.00-5.00 | $\pm .040$ |
| WALLS | $\pm .005$ |
| ANGLES | $\pm 3^\circ$ |

THIS DRAWING AND ITS CONTENTS ARE THE PROPERTY OF EAGLE WINDOW & DOOR. NO USE OR REPRODUCTION OF THE CONTENTS OF THIS DOCUMENT IS PERMITTED WITHOUT THE EXPRESS WRITTEN PERMISSION OF EAGLE WINDOW & DOOR.
 TITLE: CDHW/WDHV SASH STOP
 FINISH: BEIGE, WHITE
 MATL: RIGID PVC

| | | | | | |
|------------------------|-------------------|------|----------------|--------|----------|
| 03 CHGD LENGTHS TO 14" | TWN TRKR 10/20/05 | | | | |
| 02 CORRECT 78" SHG (L) | AWW 0844 1/22/04 | DF1: | AWW | SCALE: | 2=1 |
| 01 FLARED LEGS APART | PJBT 0805 7/9/03 | DCN: | 0589 | DRWG: | A52F |
| NO. DESCRIPTION | DFT DOC | DATE | DATE: 2/4/2002 | C | 01 OF 01 |

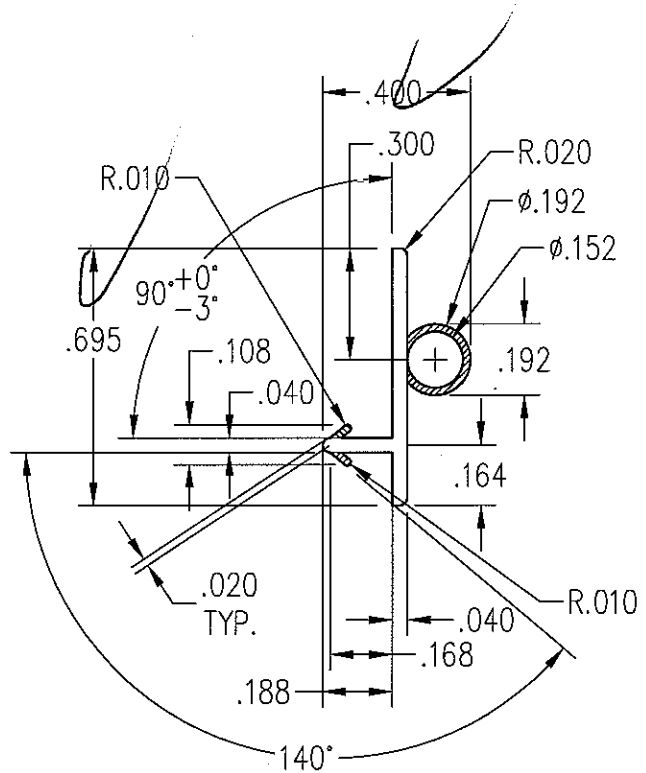
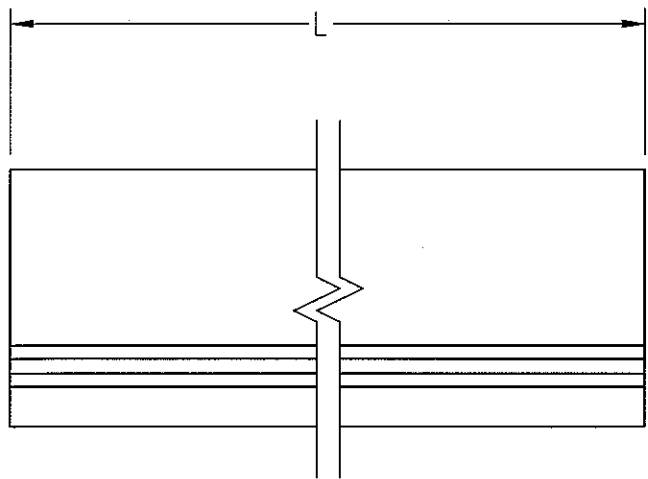
- NOTE: 1. UNLESS OTHERWISE SPECIFIED, ALL DIMENSIONS SHOWN ARE IN INCHES AND ALL TOLERANCES ARE TO BE: DEC. ± 0.005 ; FRAC. $\pm 1/64$; ANGLES $\pm 1/2^\circ$.
 2. ALL NON LABELED RADIUS ARE .020.
 3. L = AFW - 3 13/16".



Architectural Testing

Test sample complies with these details.
 Deviations are noted.

Report# 73120
 Date 5/29-6/1/07 Tech TG



THIS DRAWING AND ITS CONTENTS ARE THE PROPERTY OF EAGLE WINDOW & DOOR. NO USE OR REPRODUCTION OF THE CONTENTS OF THIS DOCUMENT IS PERMITTED WITHOUT THE EXPRESS WRITTEN PERMISSION OF EAGLE WINDOW & DOOR.

TITLE: '07 CDHV
 CR WEATHERSTRIP

FINISH: BEIGE

MATL: DUAL DURAMETER / VINYL

DFT: ksmith SCALE: 2=1

| | | | | | | |
|----|-------------------|-----|-----|---------|-----------------|------------|
| 01 | CHANGED BULB SIZE | TWN | PRE | 3/20/07 | DCN: 0881 | DRWG: A72T |
| NO | DESCRIPTION | DFT | DOC | DATE | DATE: 1/29/2007 | A 01 OF 01 |

NOTE: 1. UNLESS OTHERWISE SPECIFIED, ALL DIMENSIONS SHOWN ARE IN INCHES AND ALL TOLERANCES ARE TO BE: DEC. ± 0.005 ; FRAC. $\pm 1/64$; ANGLES $\pm 1/2^\circ$.



Architectural Testing

Test sample complies with these details.
Deviations are noted.

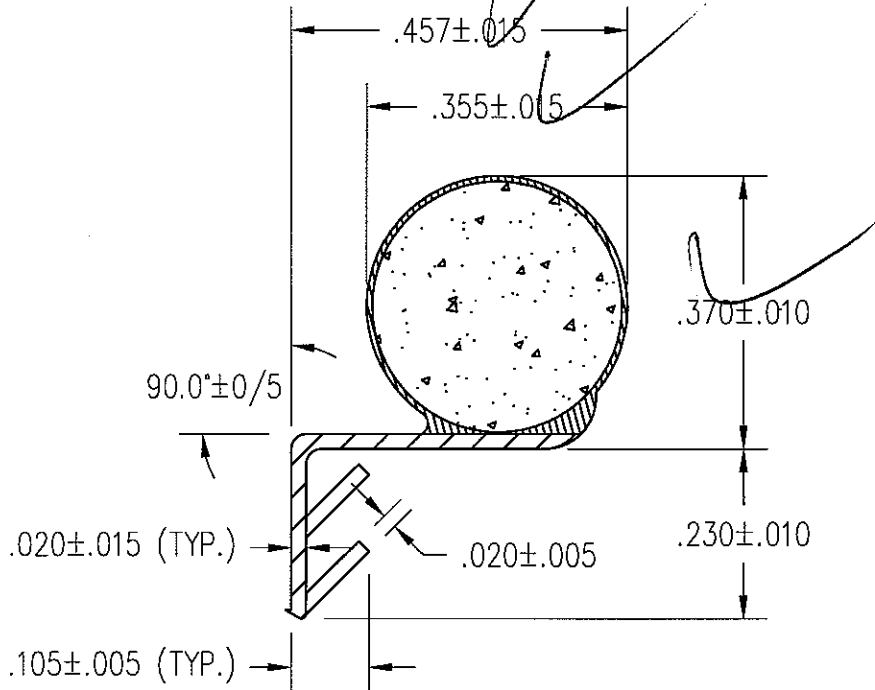
Report#

73120

Date

5/29-6/1/07

Tech TG



THIS DRAWING AND ITS CONTENTS ARE THE PROPERTY OF EAGLE WINDOW & DOOR. NO USE OR REPRODUCTION OF THE CONTENTS OF THIS DOCUMENT IS PERMITTED WITHOUT THE EXPRESS WRITTEN PERMISSION OF EAGLE WINDOW & DOOR.

TITLE: DH HEAD WEATHERSTRIP

FINISH:

MATL:

DFT: RJW

SCALE: 4=1

DCN: 0498

DRWG: A43G

DATE: 9/28/00

A 01 OF 02

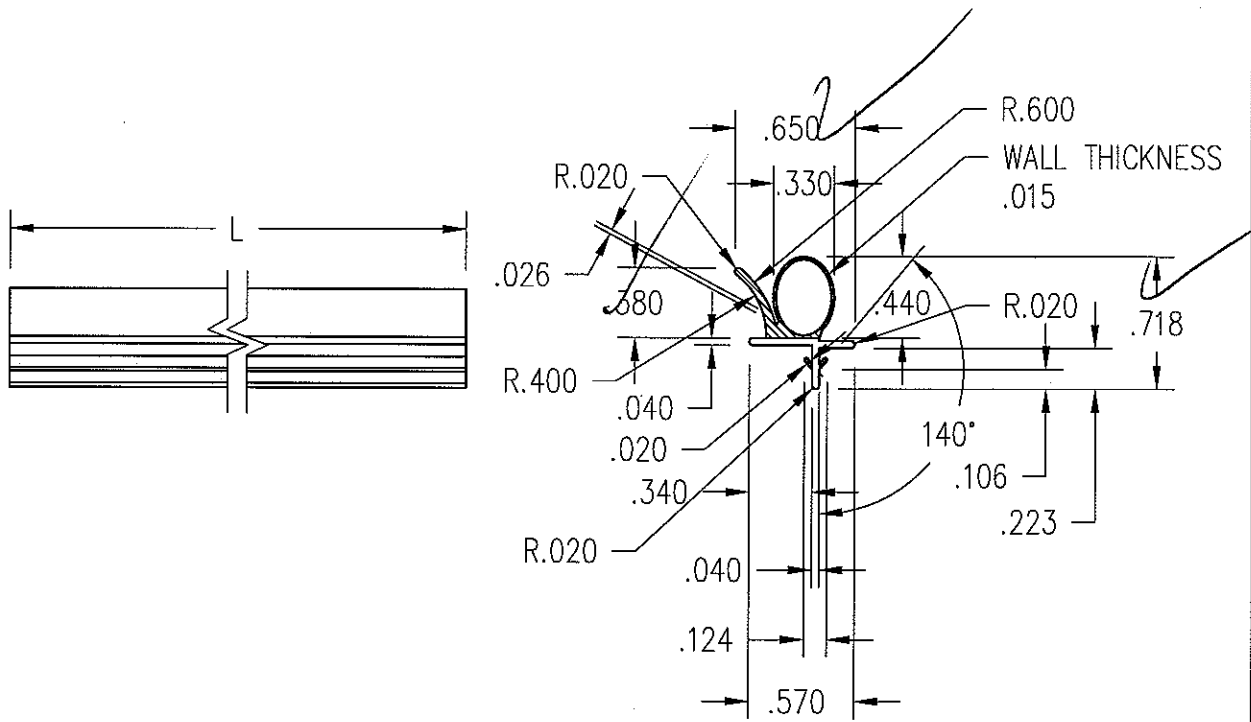
| NO | DESCRIPTION | DFT | DOC | DATE |
|----|-------------|-----|-----|------|
| | | | | |

NOTE: 1. UNLESS OTHERWISE SPECIFIED, ALL DIMENSIONS SHOWN ARE IN INCHES AND ALL TOLERANCES ARE TO BE: DEC. ± 0.005 ; FRAC. $\pm 1/64$; ANGLES $\pm 1/2^\circ$.
 2. L = AFW - 3.800.



Test sample complies with these details.
 Deviations are noted.

Report# 73170
 Date 5/29-6/16/07 Tech TG

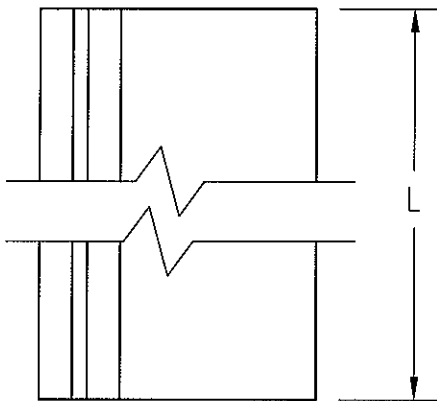
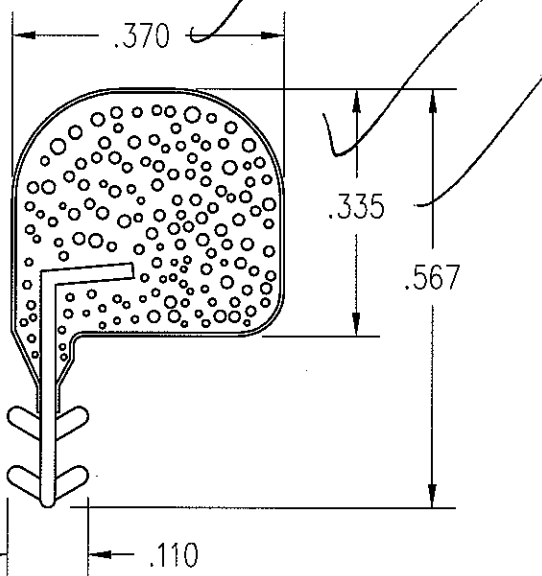


| | | | |
|--|--|------------|--|
| THIS DRAWING AND ITS CONTENTS ARE THE PROPERTY OF EAGLE WINDOW & DOOR. NO USE OR REPRODUCTION OF THE CONTENTS OF THIS DOCUMENT IS PERMITTED WITHOUT THE EXPRESS WRITTEN PERMISSION OF EAGLE WINDOW & DOOR. | | | |
| TITLE: '07 CDHV BULB W-STRIP | | | |
| FINISH: | | | |
| MATL: | | | |
| DFT: ksmith | | SCALE: 1=1 | |
| DCN: 0881 | | DRWG: A72G | |
| DATE: 1/29/2007 | | A 01 OF 01 | |

| | | | | |
|----|-----------------|-----|-----|---------|
| 01 | CHANGED PROFILE | TWN | PRE | 3/20/07 |
| NO | DESCRIPTION | DFT | DOC | DATE |

- NOTE: 1. UNLESS OTHERWISE SPECIFIED, ALL DIMENSIONS SHOWN ARE IN INCHES AND ALL TOLERANCES ARE TO BE: DEC. $\pm .005$; FRAC. $\pm 1/64$; ANGLES $\pm 1/2^\circ$.
2. (4) PCS./UNIT REQ'D. -- (2) TOP (EXT.), (2) BOTTOM (INT.).
3. UPPER SASH: $DH L = AFH/2 - 2"$.
 LOWER SASH: $DH L = AFH/2 + 11/32"$.
4. CSD USES BEIGE, (L) = $AFH - 1 7/8"$
5. COMPRESSION SPECIFICATION
- A) 4.5 LBS ± 1 LB @ 25% COMPRESSION (.084")
 - B) .2 LBS PRE-LOAD
 - C) 4.000" PIECE $\pm .020"$

| DOUBLE HUNG | | |
|--------------|--------------|--------------|
| FRAME HEIGHT | UPPER SASH L | LOWER SASH L |
| 36 | 16 | 18 11/32 |
| 40 | 18 | 20 11/32 |
| 48 | 22 | 24 11/32 |
| 54 | 25 | 27 11/32 |
| 60 | 28 | 30 11/32 |
| 66 | 31 | 33 11/32 |
| 72 | 34 | 36 11/32 |
| 78 | 37 | 39 11/32 |
| 84 | 40 | 42 11/32 |
| 90 | 43 | 45 11/32 |
| 96 | 46 | 48 11/32 |
| 102 | 49 | 51 11/32 |
| 108 | 52 | 54 11/32 |
| 114 | 55 | 57 11/32 |
| 120 | 58 | 60 11/32 |



| CSD (INTERLOCK) | |
|-----------------|---------|
| FRAME HEIGHT | L |
| 80 | 78 1/8 |
| 82 | 80 1/8 |
| 96 | 94 1/8 |
| 120 | 118 1/8 |

THIS DRAWING AND ITS CONTENTS ARE THE PROPERTY OF EAGLE WINDOW & DOOR. NO USE OR REPRODUCTION OF THE CONTENTS OF THIS DOCUMENT IS PERMITTED WITHOUT THE EXPRESS WRITTEN PERMISSION OF EAGLE WINDOW & DOOR.

TITLE: DHG JAMB WEATHER STRIP
 SCHLEGEL (LAMINATED LINER)

FINISH:

MATL: CORE: HR URETHANE FOAM
 SKIN: PE LINER M5

| | | | | | | |
|----|-----------------------------|-----|------|-----------|-----------------|------------|
| 03 | UPDATED DHG CHART & NOTE #3 | KJS | 0881 | 1/5/07 | | |
| 02 | ADD COMPRESSION SPEC | PJB | 0873 | 4/6/2004 | DFT: AWW | SCALE: 4=1 |
| 01 | ADD CSD CHART | AWW | 0743 | 2/17/2003 | DCN: 0589 | DRWG: A523 |
| NO | DESCRIPTION | DFT | DOC | DATE | DATE: 8/23/2001 | A 01 OF 01 |