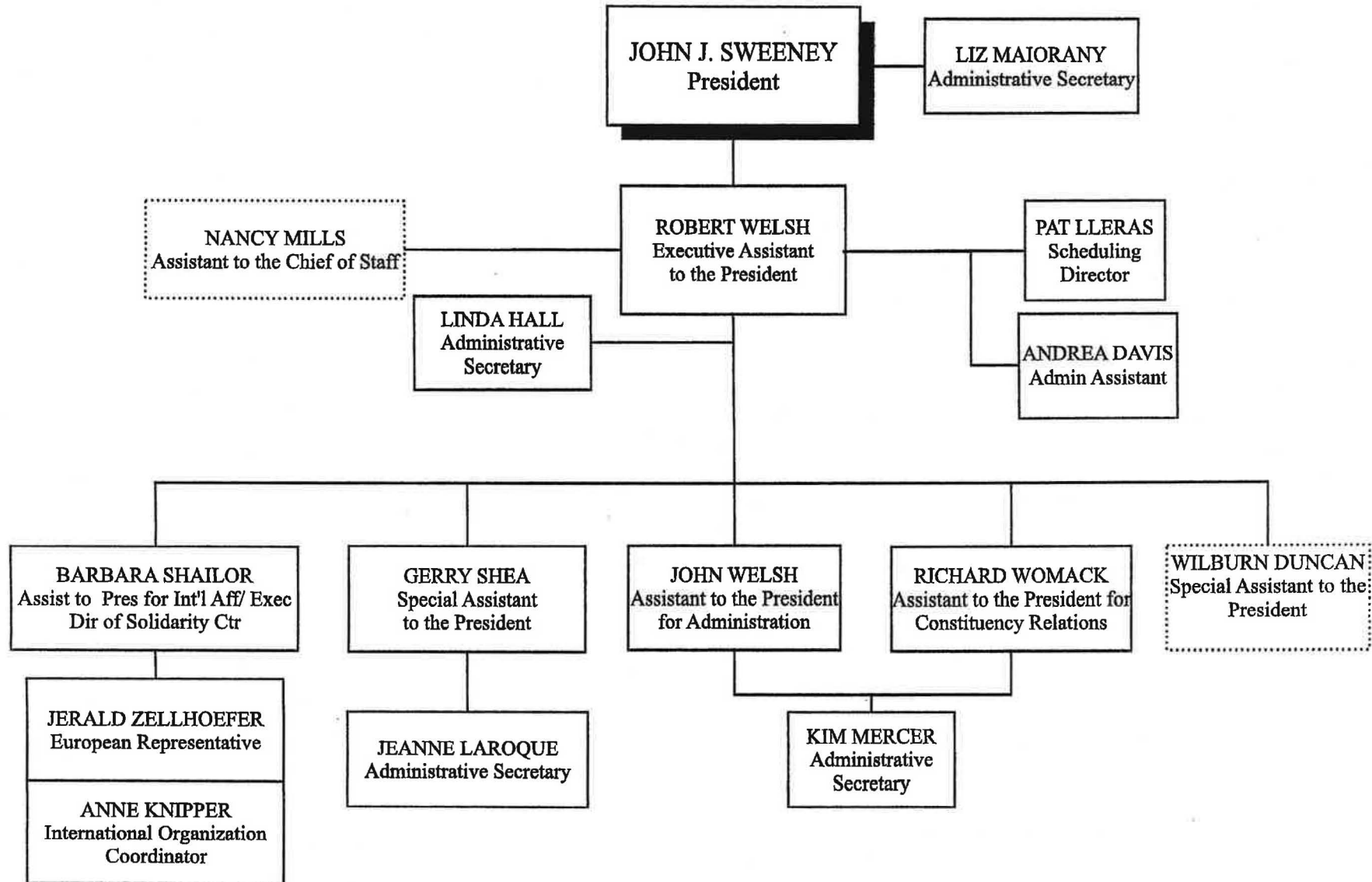


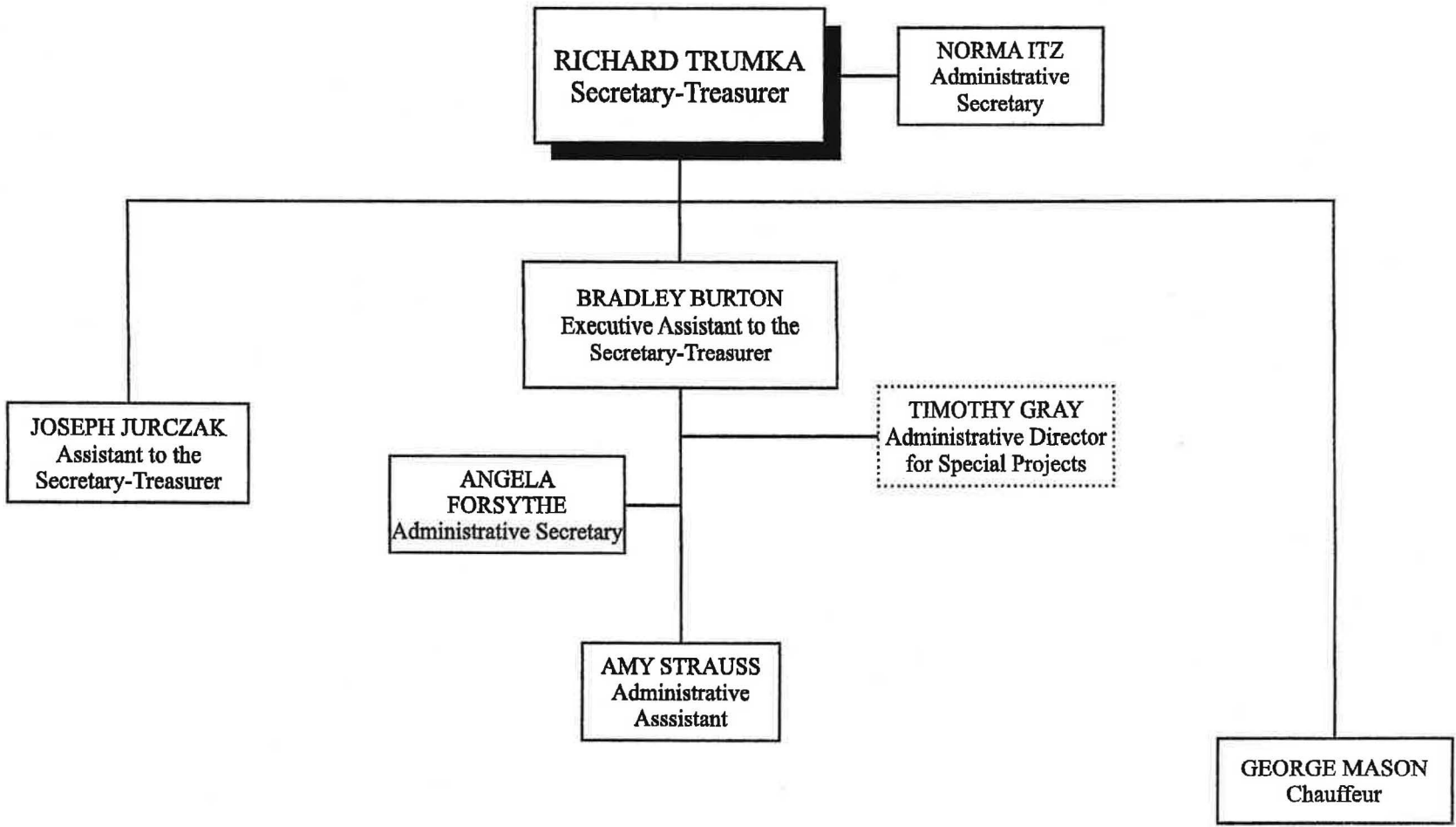
OFFICE OF THE PRESIDENT
Positions [15]



Offset Position

February 1, 2006

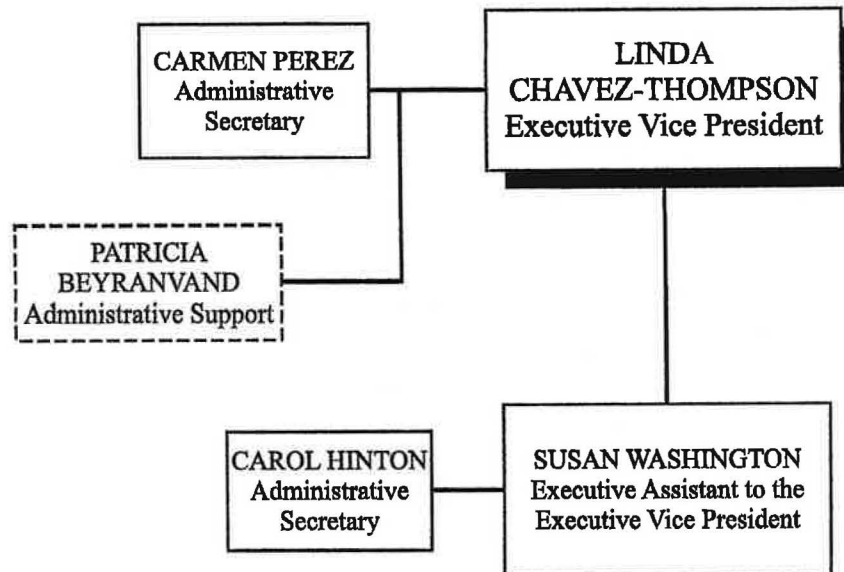
OFFICE OF THE SECRETARY-TREASURER
Positions [7]



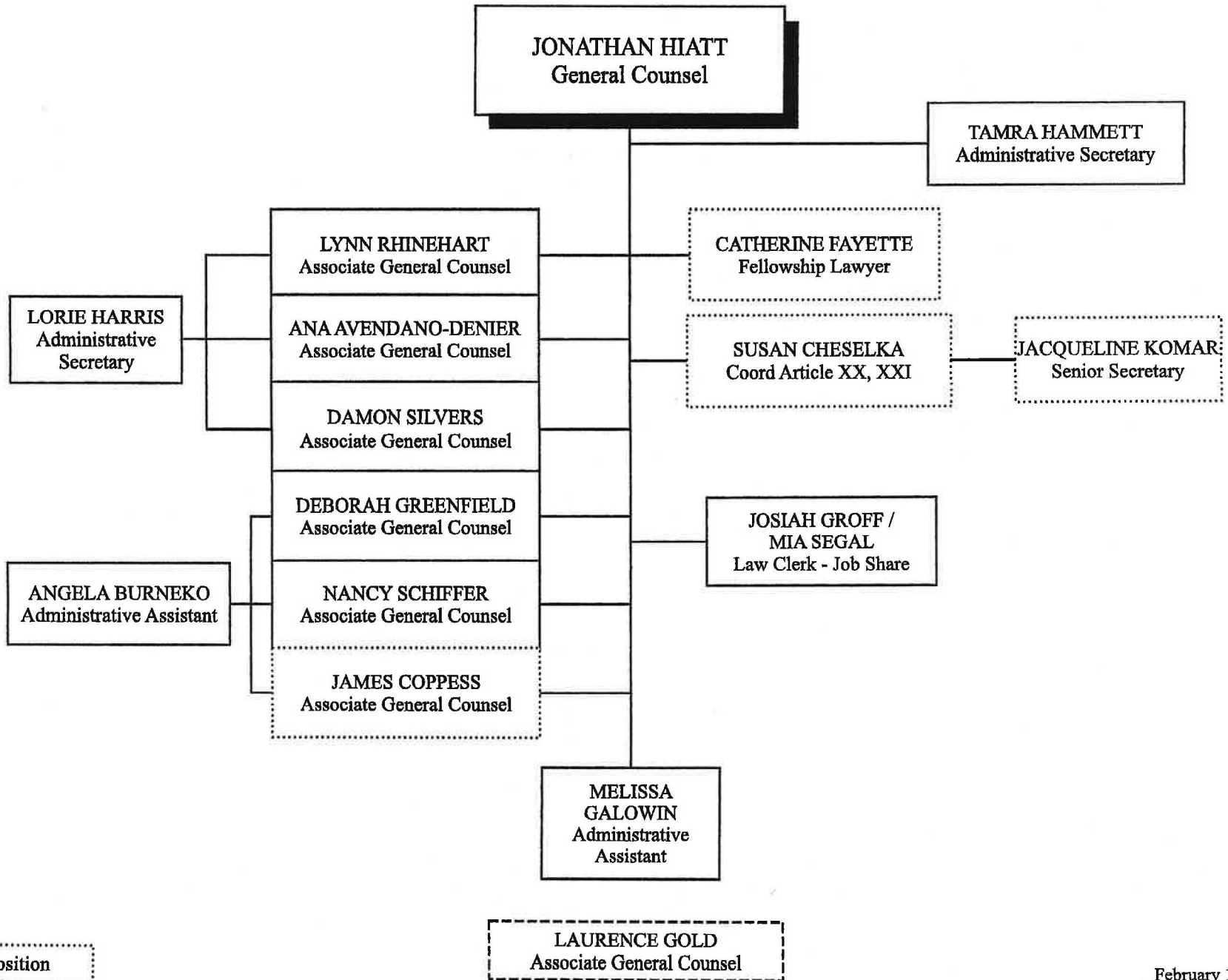
Offset Position

OFFICE OF THE EXECUTIVE VICE PRESIDENT

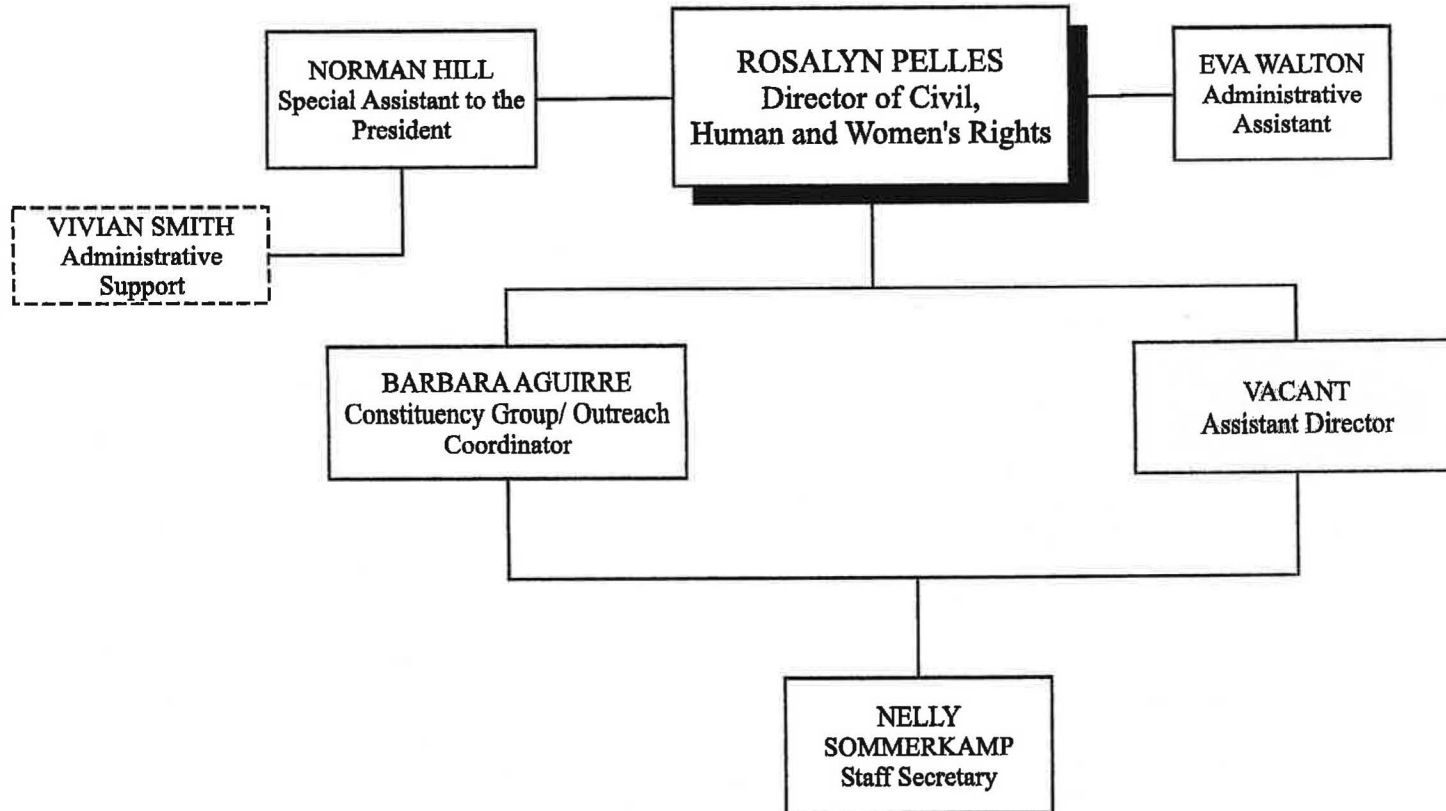
Positions [4]



OFFICE OF THE GENERAL COUNSEL
Positions [15]



CIVIL, HUMAN AND WOMEN'S RIGHTS DEPARTMENT
Positions [6]



LEGISLATION DEPARTMENT

Positions [24]

WILLIAM SAMUEL
Director of
Legislation

MARGE TRACEY
Office Administrator

THEA LEE
Deputy Director for
Public Policy

GERRON LEVI
Deputy Director
for Congressional
Relations

BOB BAUGH
Industrial Unions
Coordinator

RON BLACKWELL
Chief Economist

PEG SEMINARIO
Director of Safety and
Health

SHAUN O'BRIEN
Assistant Dir for Social
Policy

SONIA RAMIREZ
Legislative
Representative

JO ANN VOLK
Legislative
Representative

**JOYCE
JOHNSON**
Senior Secretary

WILLIAM KOJOLA
Industrial
Hygienist

VACANT
Leg & Policy Analyst-
Economic Policy

**LAUREN ROTHFARB/
GAIL DRATCH**
Leg Representative

KELLY ROSS
Legislative
Representative

TONI KEIGHTLEY
Office Administrator

VACANT
Legislative Specialist -
Global Economy

CECELIE COUNTS
Legislative
Representative

GREG JEFFERSON
Legislative
Representative

**CHRISTINE SILVIA-
DEGENNARO**
Leg & Policy Analyst-
Labor & Workplace
Standards

JAY POWER
Legislative
Representative

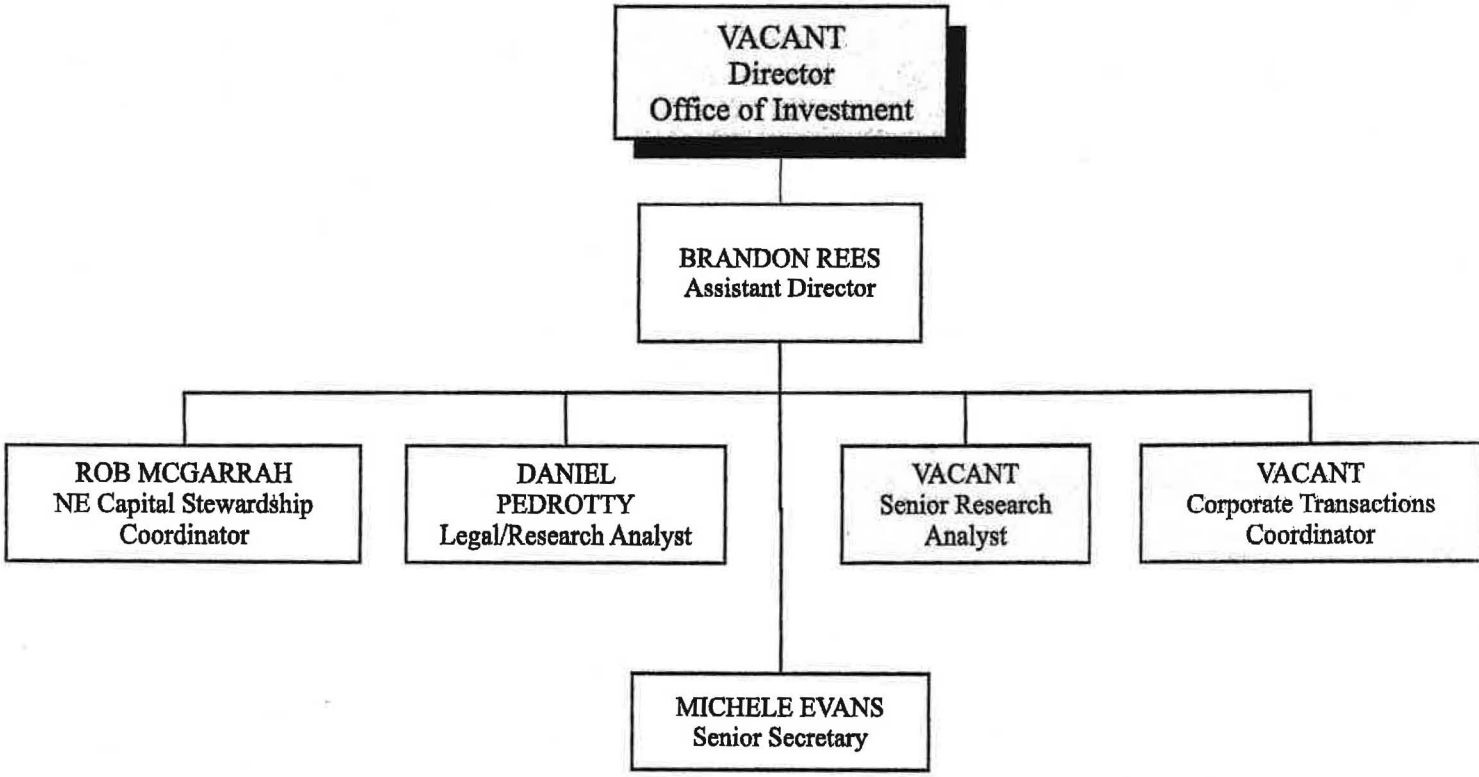
VACANT
Legislative
Representative-Trade

**JANE MCDONALD-
PINES**
Legislative Specialist -
Workforce Issues

KATHY FULLER
Senior Secretary

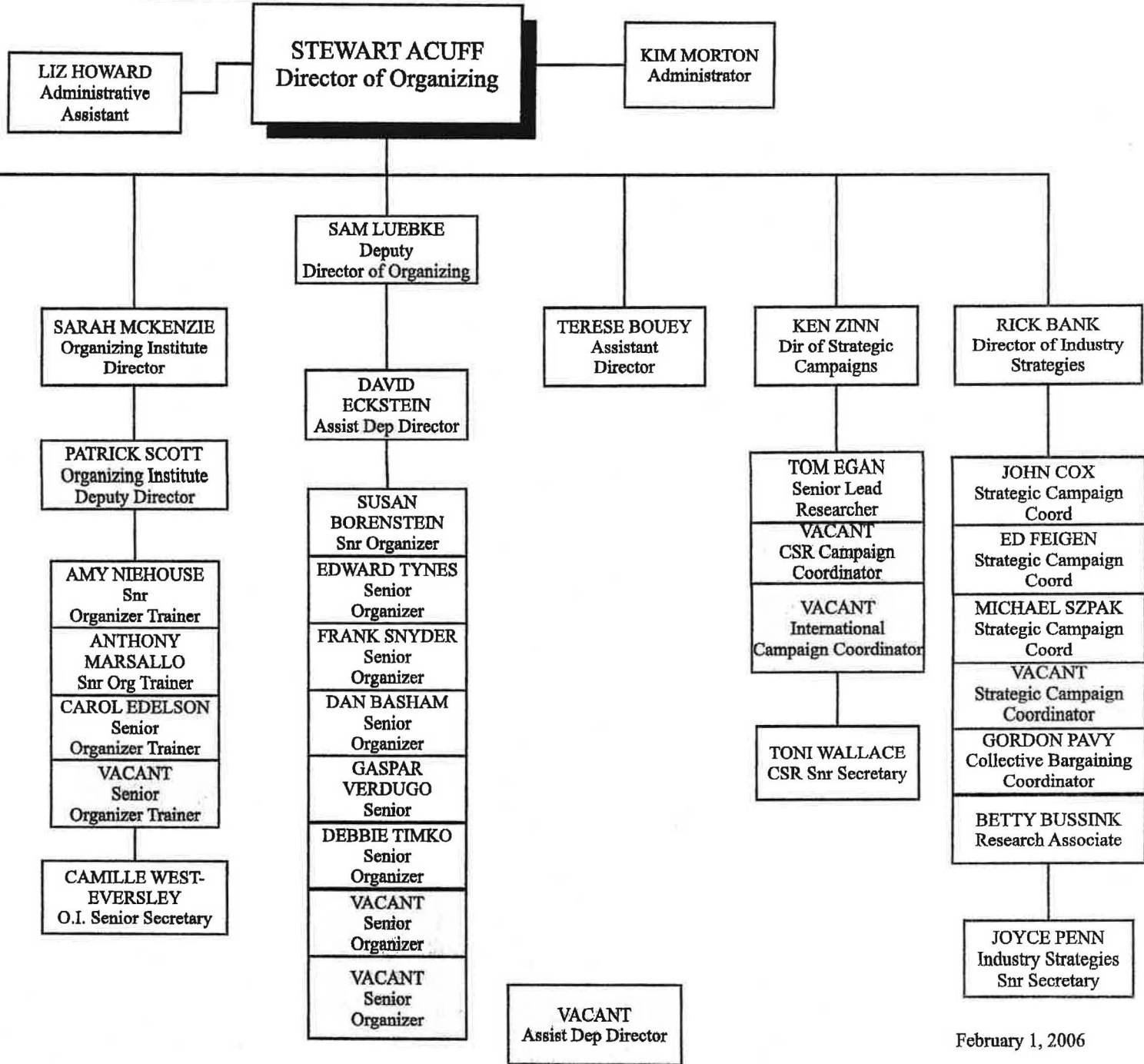
LISA ROBBINS
Senior Secretary

OFFICE OF INVESTMENT
Positions [7]



ORGANIZING DEPARTMENT

Positions [43]



February 1, 2006

PUBLIC AFFAIRS DEPARTMENT
Positions [30]

DENISE MITCHELL
Assistant to the President for
Public Affairs

KAREN BAUER
Administrative
Secretary

PAUL GORDON
Speechwriter

DONNA JABLONSKI
Deputy Director for
Publications, Web and
Broadcast

MARY SNEDEN
Administrative
Assistant

LANE WINDHAM
Deputy Director
for Outreach and
Development

**BEVERLY
HOLTON**
Senior Secretary

QUENTINE WHITE
Senior Secretary

VACANT
Senior Media
Outreach Specialist

JOHN SMALL
Proofreader/ Copy
Editor

**CHRISTINE
KENNGOTT**
Working Families
Network Mgr

TULA CONNELL
Managing Editor

REGGIE COLE
Broadcast and
A/V Manager

STEVE SMITH
Media Outreach
Specialist

STEPHEN WILHITE
Publications Coordinator

**MONIKA
GREENHOW**
Web Editorial
Project Manager

VACANT
Web Specialist

JOE KEKERIS
Production
Coordinator

KATE SNYDER
Media Outreach
Specialist

JESSE BERNEY
On-line
Mobilization
Coordinator

CHANH LIEN
Senior Graphic
Designer

JAMES PARKS
Senior Writer

**ESMERALDA
AQUILAR**
Media Outreach
Associate

KERI SHANKS
Store Manager

**ORLANDO
BUGARIN**
Store Clerk

**DAN
NOTARGIACOMO**
Web Assistant

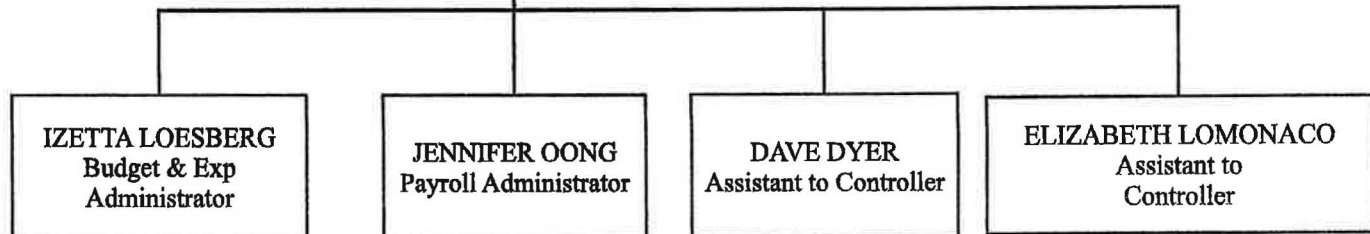
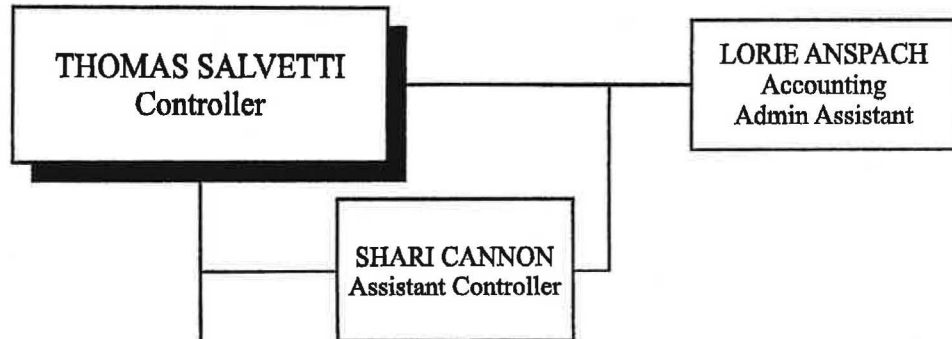
**MICHAEL
HALL**
Senior Writer

VACANT-CONVERT
Media Outreach
Associate [4 months]

VACANT
Media Outreach
Fellow

**MAUREEN
HARRIOTT**
Staff Secretary

ACCOUNTING DEPARTMENT
Positions [18]



RITA FLYNN
Pension/Benefits
Specialist

OBREITA TOGANS
Accountant II

KATHY ROBY
Accountant III

EDWARD CLARK
Accountant III

MARCUS
MEDLEY
Accountant III

CASSANDRA
PARKER
Senior Secretary

ROBERTA LOVING
Accountant II

PAULA LAPP
Accountant II

MACK
HARRELL, JR.
Accountant II

DRU
BASKERVILLE
Senior Secretary

SUSAN
STANTON
Accountant II

Offset Position

FACILITY MANAGEMENT DEPARTMENT

Positions [31]

MARK ZOBRISKY
Facilities Manager

KATHY CALLOWAY
Senior Secretary

MAUREEN SMITH
Senior Secretary

STEPHEN WORREY
Chief Engineer

MICHAEL HARRIS
Watch Engineer

JAMES COBY
Engineer

PAUL SEMELSBERGER
Lead Security Guard

WALTER COLE
Operations Supervisor

DANNY MORELAND
Security Guard

RONNIE TATE
Security Guard/General Office Clerk III

DENNIS SALAMONE
General Office Clerk II

JOSEPH GILCHRIST
Night Crew Leader

PEGGY BERRY
Evening Cleaner

MIGUEL FERRUFINO
Evening Cleaner

CONTINA BROWN
Evening Cleaner

JOSEPH REARDON
Evening Cleaner

GLEND AVILA
Evening Cleaner

WILLIAM GUNTER
Night Crew Leader

JOHN HENRY
Evening Cleaner

TWYILA FOSTER
Evening Cleaner

JOHNNY JOHNSON
Evening Cleaner

ROBERT MITCHELL
Evening Cleaner

LAWRENCE BRUFFY
Day Crew Leader

LUCRESIA HUGHES
Day Main Staffer

VERNON PATTEN
Day Main Staffer

ALICE SCALES
Day Main Staffer

STEVEN FORD
Day Main Staffer

THOMAS MOSS
Day Crew Leader

VANNA OUK KHEAV
Lead Catering & Cook Server

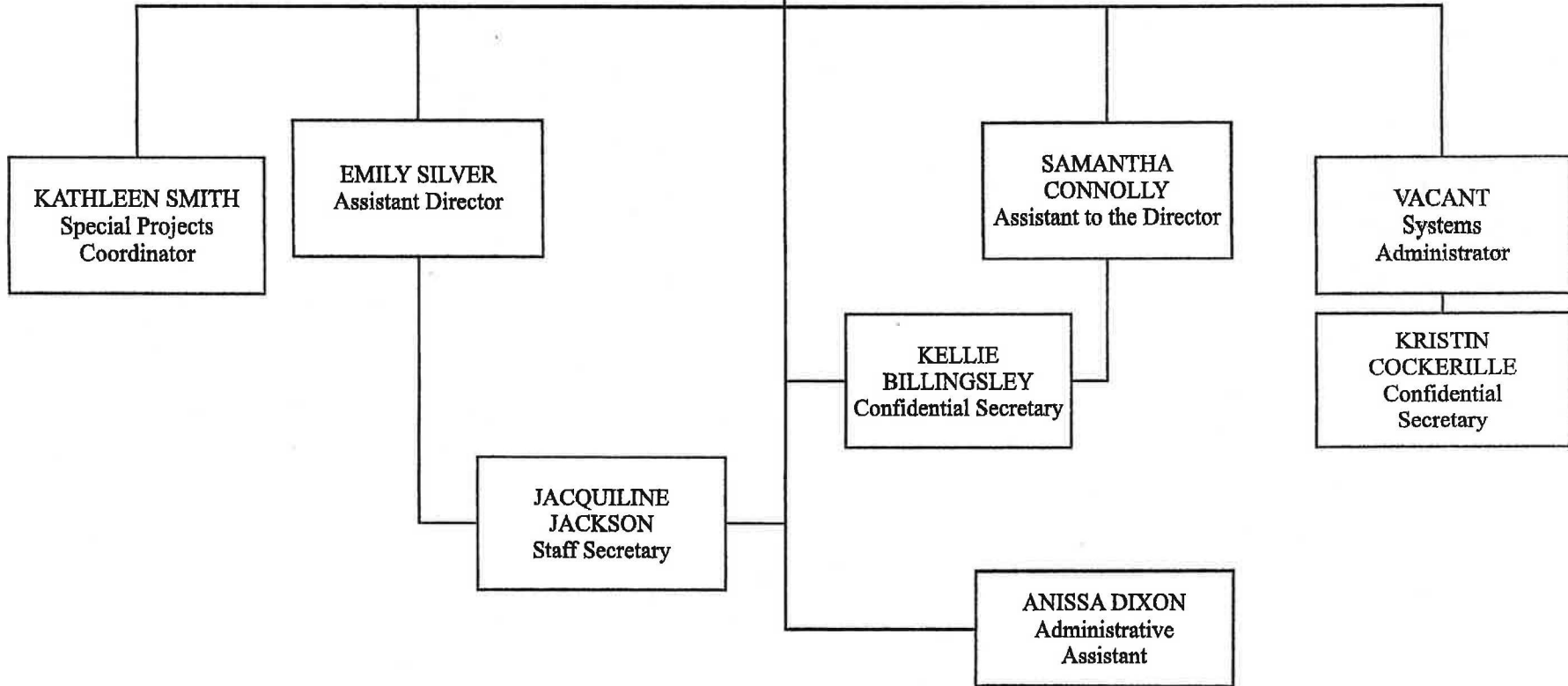
RUBY CROWNER
Prep Service & Cashier

WALLACE WRIGHT
Prep Service Utility

MARGARET BROWN
Administrative Support

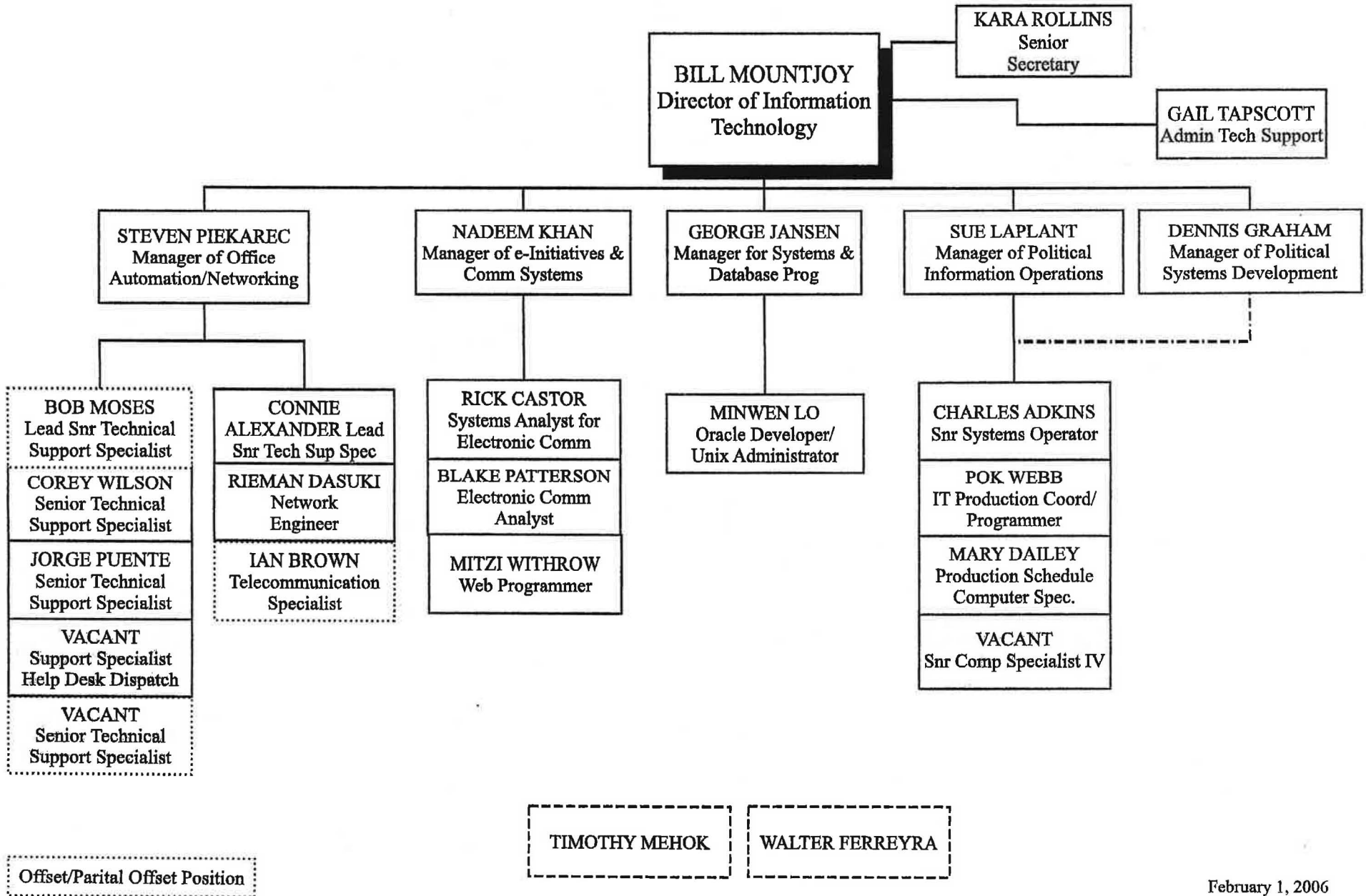
HUMAN RESOURCES DEPARTMENT
Positions [9]

KARLA GARLAND
Director of
Human Resources



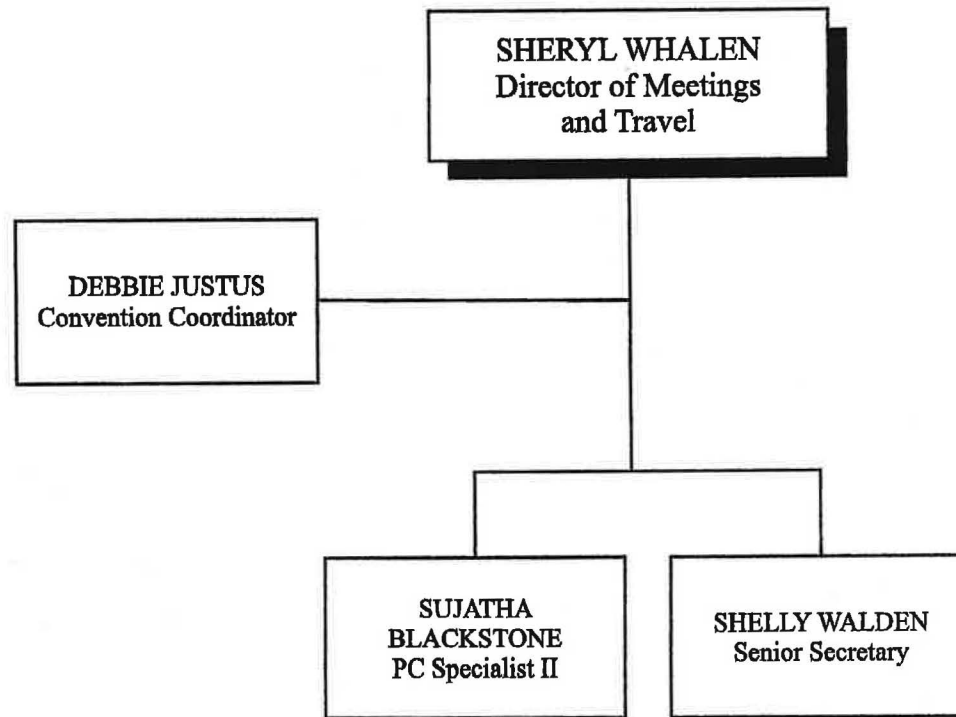
INFORMATION TECHNOLOGY DEPARTMENT

Positions [24]



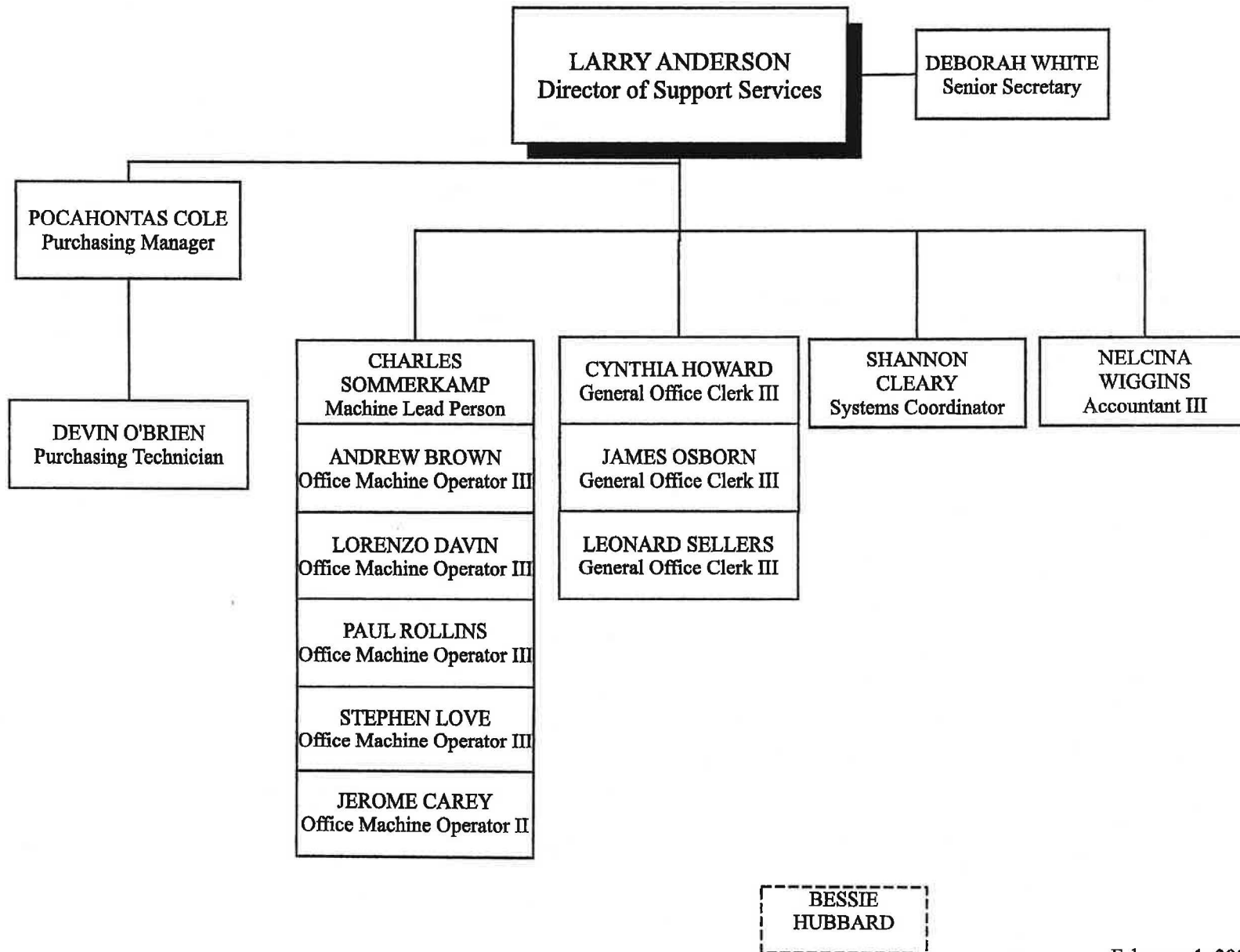
MEETINGS AND TRAVEL DEPARTMENT

Positions [4]



SUPPORT SERVICES DEPARTMENT

Positions [15]



February 1, 2006