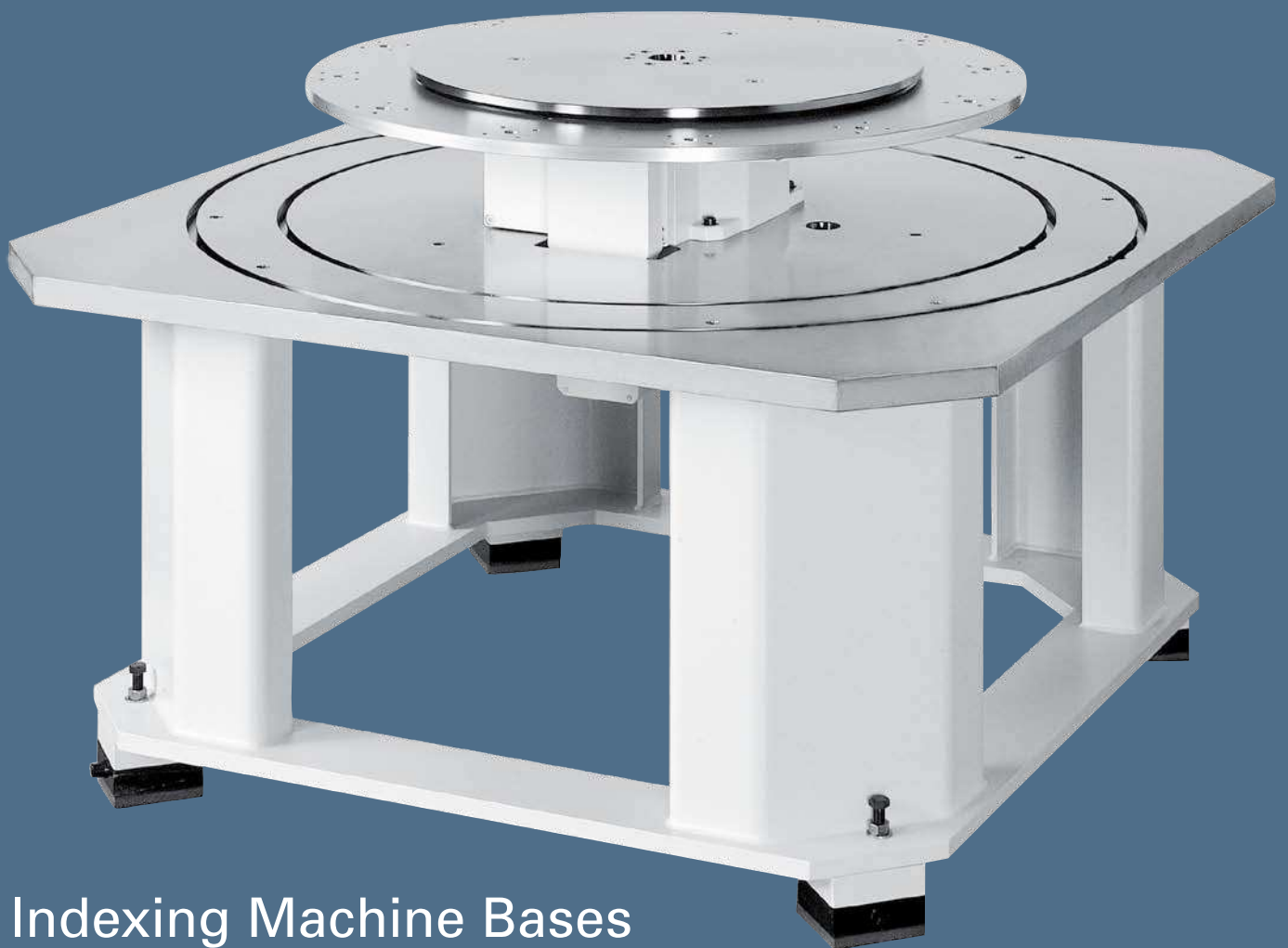


Technology that inspires



Indexing Machine Bases and Dial Plates



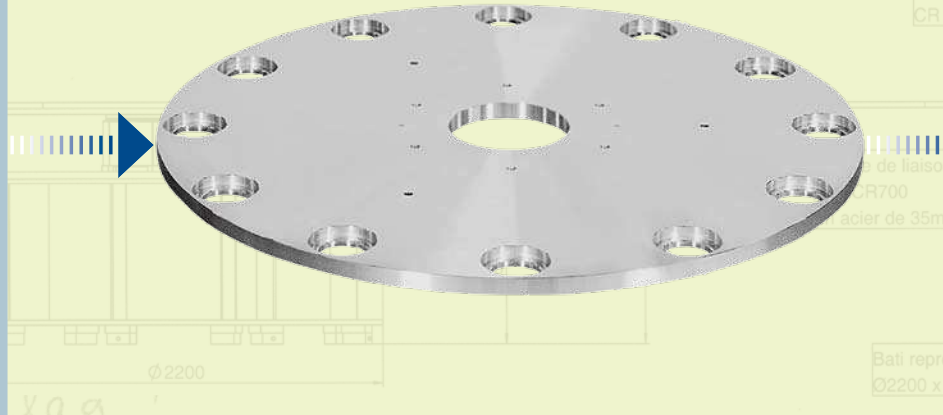
Everything from a single source

Indexing units, machine bases and dial plates:

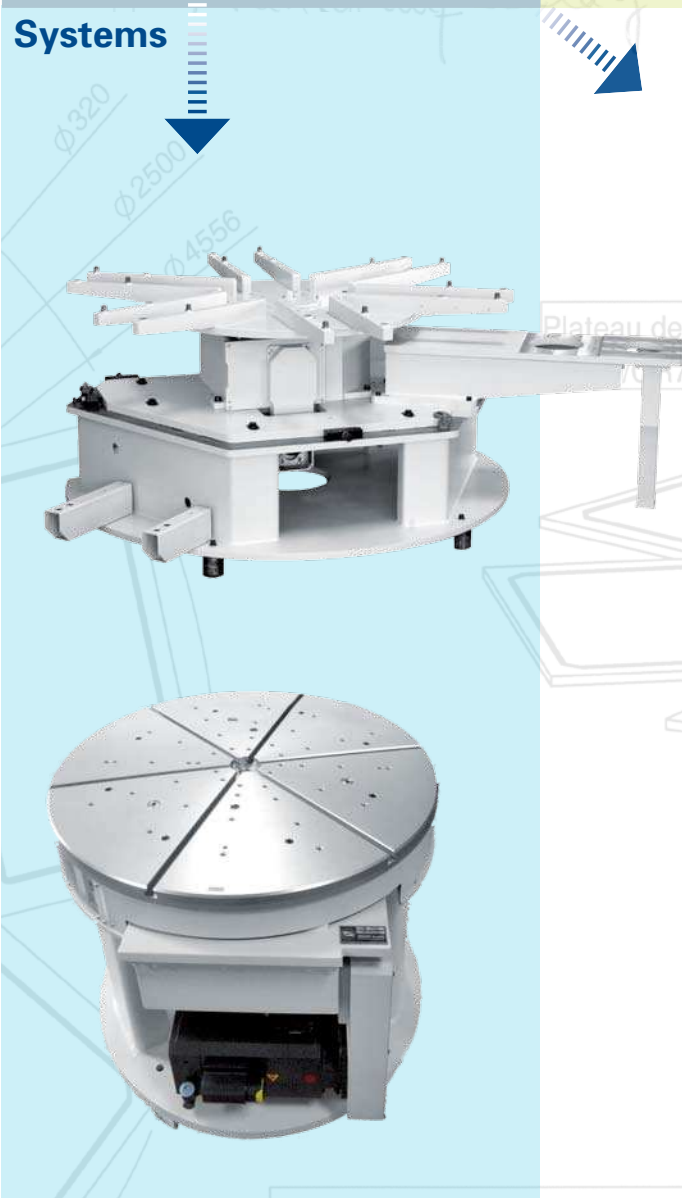
Basic idea



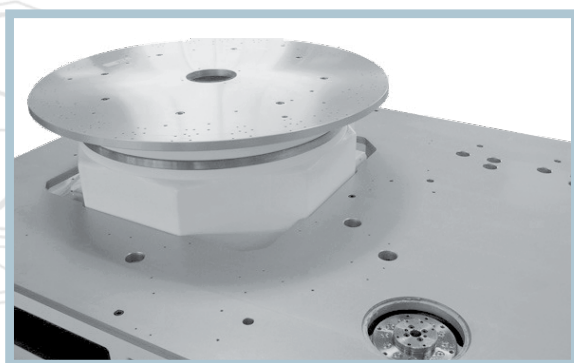
Stationary and rotating plates



Systems



Machine Bases



Advantages at a glance

- **Guaranteed quality – No surprises**

All your equipment with regards to design, dimensions and colour can be delivered to you from a single source including a test report.

- **Short delivery times**

Based on our standard designs we can supply a mechanically built rotary assembly machine in as little as 6 weeks.

- **Save time and money – No surprises**

Reduce your time from installation to production with minimal engineering, design and manufacturing.

- **Design**

We offer attractive base designs in round, square or according to your requirements.

- **Surface treatment**

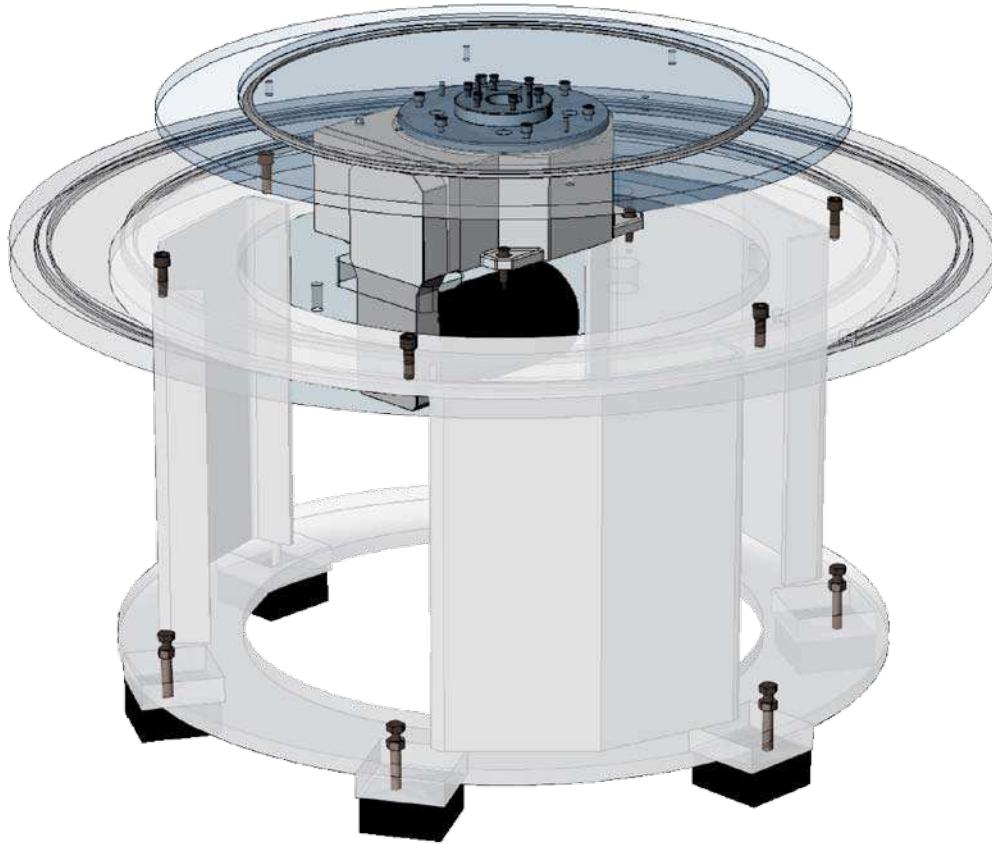
Aluminium – anodised

Steel – chemically nickel plated or coloured brown

Fabricated steel sections powder coated

www.weiss-gmbh.de

SR Series



Special Features:

- 5 standard sizes: BG 100R, BG 200R, BG 300R, BG 400R, BG 500R
- 3 - 4 standard ribbed legs depending on diameter
- Customised diameters / designs available on request

Rotary Indexing Tables

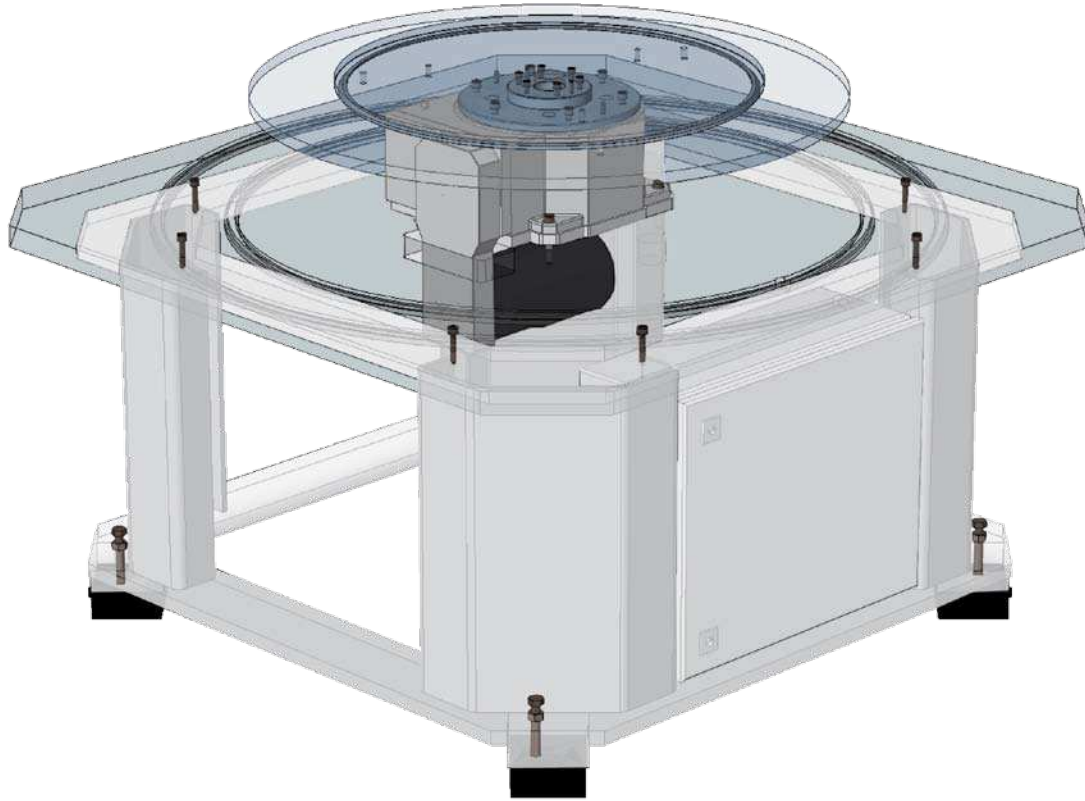
- Select the rotary indexing table suitable for your application
- Series TC-T, TR/NR, NC-T or TO. All are available in various model sizes (please refer to appropriate brochure)
- The overall height of your machine will be determined by the height of the indexing unit used and the length of the support legs.

Additional Rotating Dial Plates

- Our aluminium dial plates are manufactured in a controlled temperature environment from at least 3 month aged material
- Dimensions, manufacturing and surface treatments according to your specification
- Supplied with a quality certificate

SK Series

Technology that inspires



Special Features:

- 3 standard sizes: BG 100K, BG 200K, BG 300K
- Integrated switch cabinets available
- Sheet metal infills possible
- Sizes available up to 2100 mm x 2100 mm (2900 mm diagonal measurement possible)
- Customised sizes available upon request

Base Plates

- Round, square or rectangular
- Dimensions, material and processing according to your specification
- Machining according to your drawing
- T-slots possible
- Cable ducts standard

Basic Frames

- Round and square standard sizes
- Height adjustment possible
- Customised design upon request
- High quality rigid fabricated construction
- Height adjustable and shock absorbing feet
- Switch cabinets can only be fitted into square bases

Additional Stationary Top Plates

- With integrated lip seal between stationary and rotating indexing plate
- In aluminium or steel, manufactured according to your drawing
- T-slots possible

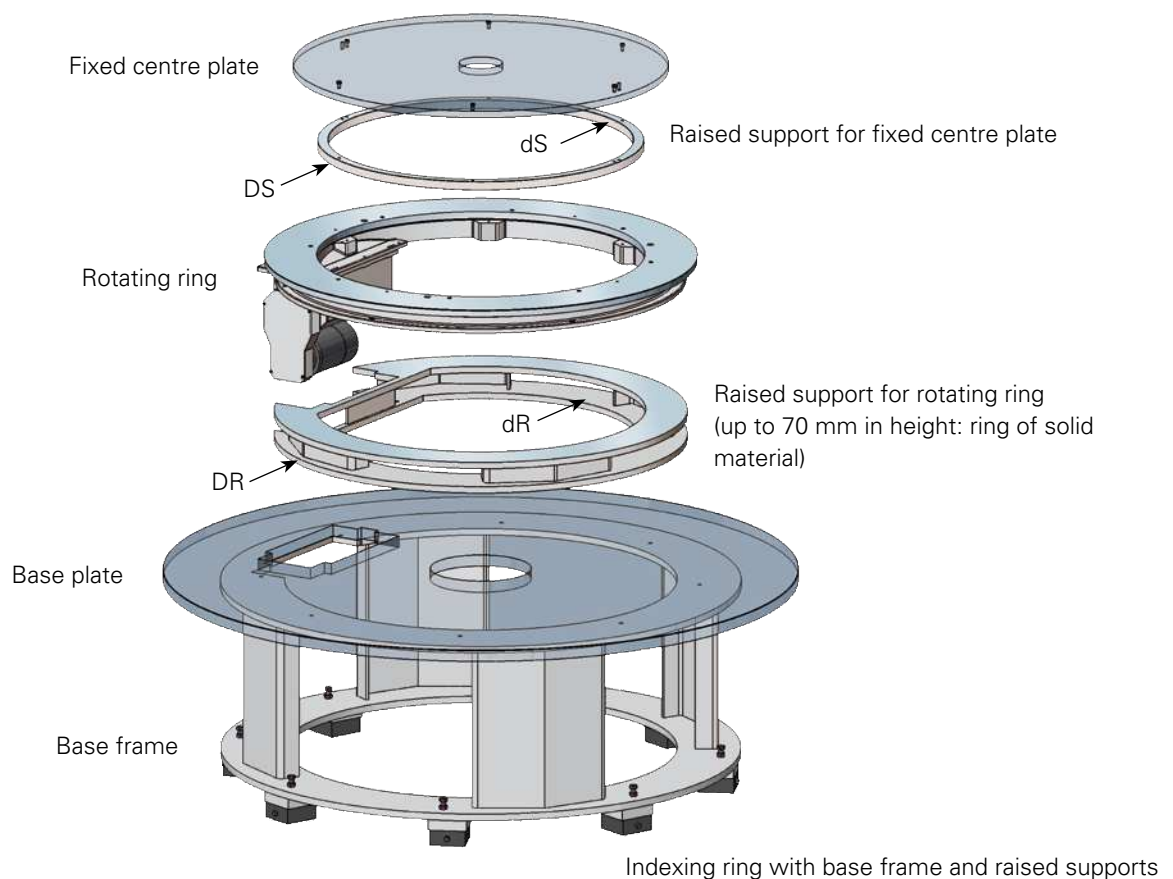
SR Series

Table of dimensions for standard version (Attention! New type designation)

Type	Recommended rotary table type	ØA (Standard)	B	B*	H	ØI	ØJ	ØK	M*
BG 100R	TC 150T, TC 220T, TC 320T, TO 150C, TO 220C, TO 750C	1300	35	40	575	960	615	960	760
BG 200R	TC 220T, TC 320T, TC 500T, TR/NR 750, PM 1100, TO 750C	1500	35	40	485	1200	815	1200	760
BG 300R	TC 320T, TC 500T, TC 700T, TR/NR 750, TR/NR 1100, PM 1500	1800	35	40	615	1350	967	1350	760
BG 400R	TC 500T, TC 700T, TR/NR 1100, TR/NR 1500	2200	35	40	690	1800	1357	1800	760
BG 500R	TR/NR 1500, TR/NR 2200	2500	35	40	656	2200	1700	2200	760

General tolerances in conformity with DIN ISO 2768-m. Special tolerances upon request.

Notes: The positioning of the legs may not be symmetrical depending upon the indexing unit selected. For dimensions please request a drawing. See the relevant rotary indexing table brochure for permissible loads on stationary or rotary indexing plates. Special machining according your drawing.



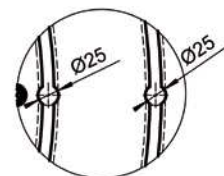
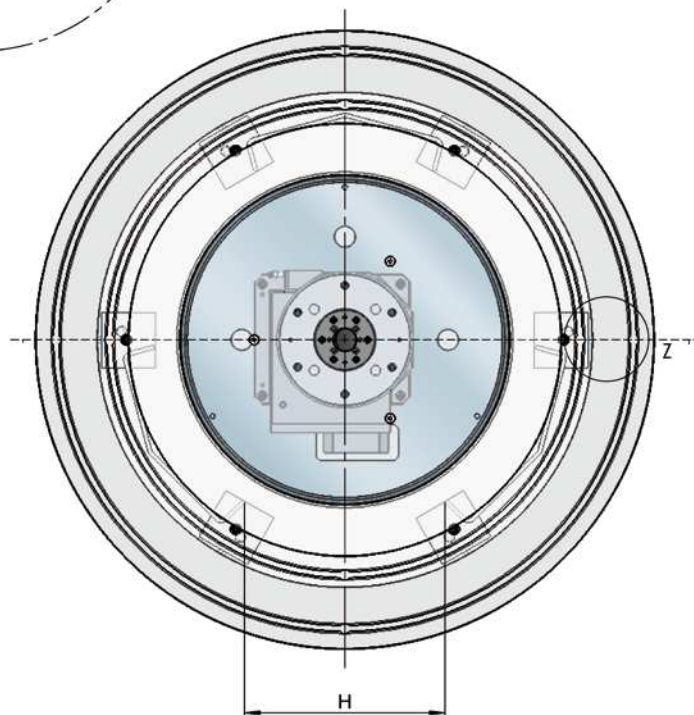
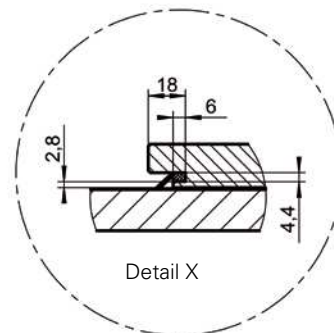
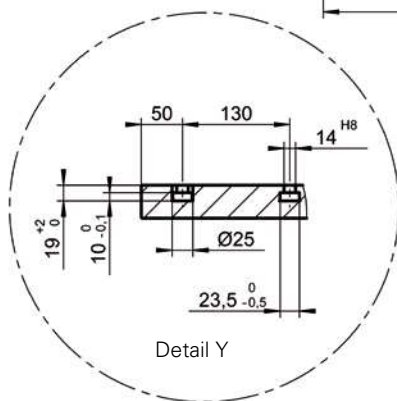
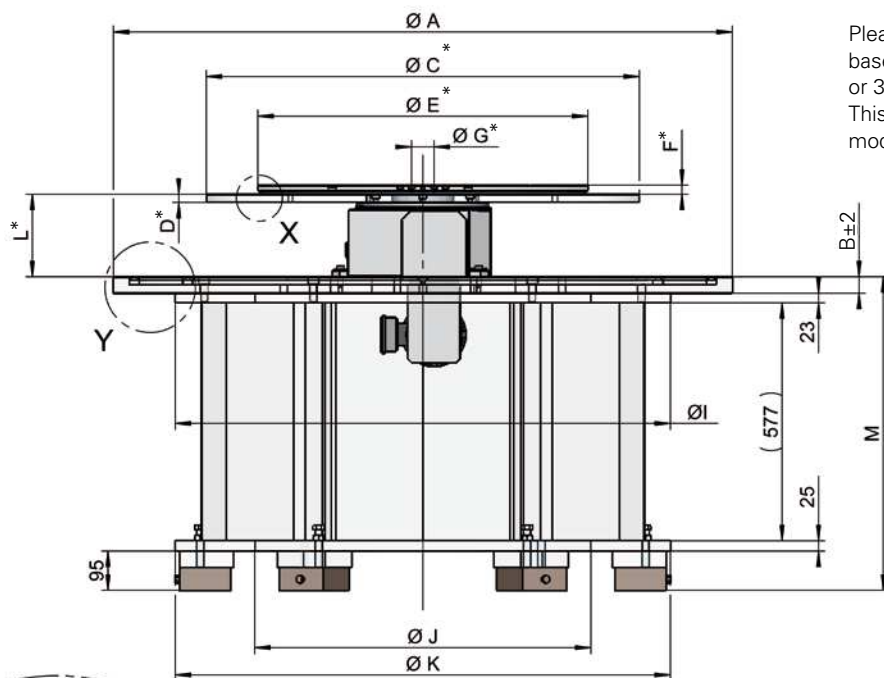
Optional raised support dimensions for indexing rings TR / NR.

Table type	Raised support for fixed centre plate				Raised support for rotating ring			
	Name	ØDS	ØdS	Height	Name	ØDR	ØdR	Height
NR 750, TR/NR 750, TC 750	ZH 750S	485	410	21,5	ZH 750A	770	440	variable
TR 1100, TR/NR 1100, TC 1100	ZH1100S	795	720	32	ZH1100A	1100	740	variable
TR 1500, TR/NR 1500, TC 1500	ZH1500S	1130	1055	32	ZH1500A	1420	1080	variable

SR Series Dimensions

Technology that inspires

Please download the selected machine base from www.weiss-gmbh.de (in 2D or 3D) directly into your CAD drawing. This will ensure you are using the latest model.



Detail Z
(4 x 90°)



*Please see our TC-T und TR/NR brochures for recommended dimensions and \varnothing .

SK Series

Table of dimensions for standard version (Attention! New type designation)

Type	Recommended rotary table type	ØA (Standard)	B	B*	H	ØI	ØJ	ØK	M*
BG 100K	TC 150T, TC 220T, TC 320T	1300	35	40	410	1000	615	1000	760
BG 200K	TC 220T, TC 320T, TC 500T, TR /TR 750	1480	35	40	610	1300	1007	1300	760
BG 300K	TC 320T, TC 500T, TC 700T, TR/NR 750, TR/NR 1100, (Pik-o-mat) PM 1100, PM 1500	1800	35	40	710	1610	1310	1610	760

General tolerances in conformity with DIN ISO 2768-m. Special tolerances upon request.

* with T-slots

Notes: The positioning of the legs may not be symmetrical depending upon the indexing unit selected. For dimensions please request a drawing. See the relevant rotary indexing table brochure for permissible loads on stationary or rotary indexing plates. Special machining according your drawing.

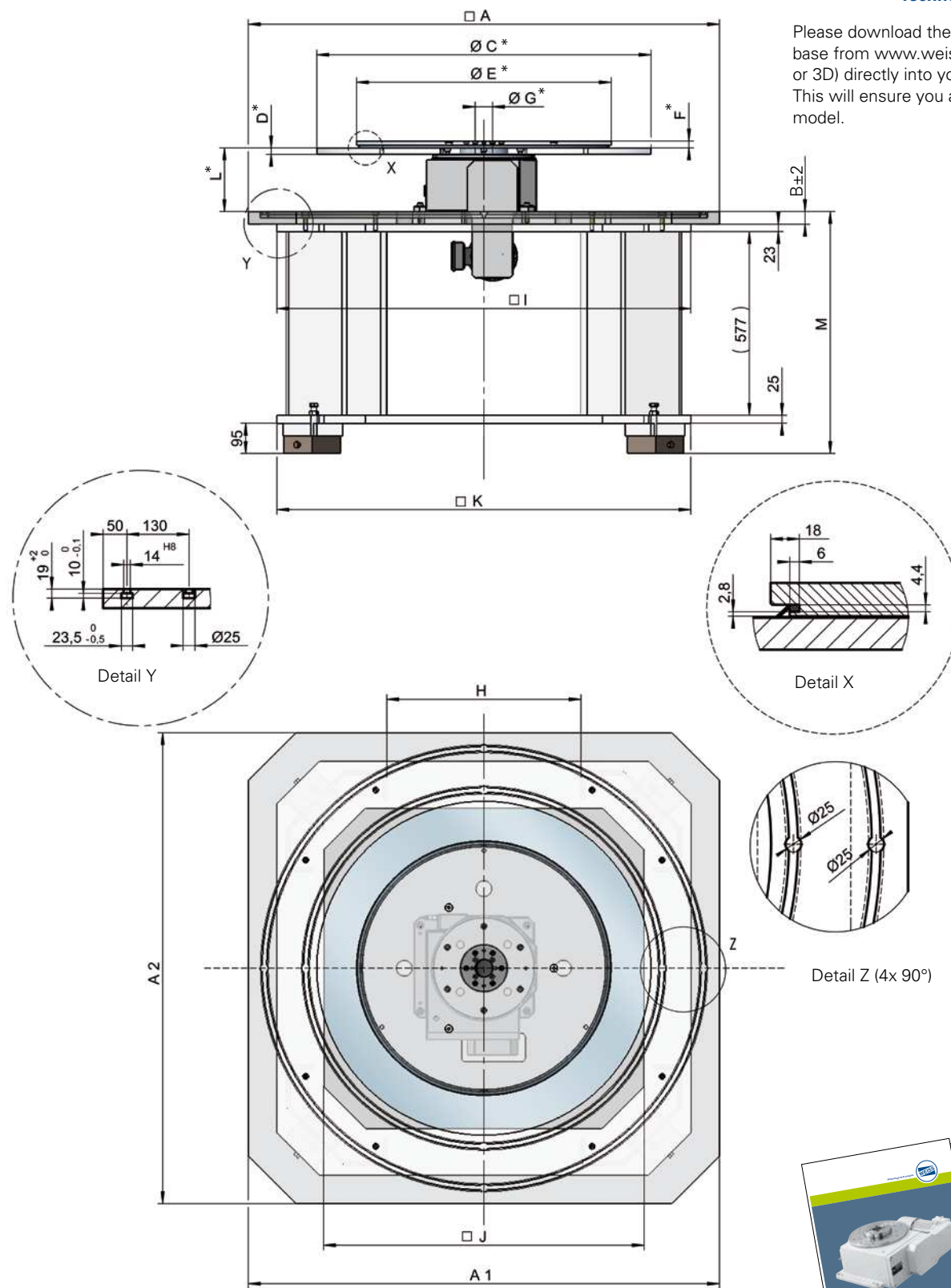


Example detailing SK 300K, TC 320, dial and stationary plates.

SK Series Dimensions

Technology that inspires

Please download the selected machine base from www.weiss-gmbh.de (in 2D or 3D) directly into your CAD drawing. This will ensure you are using the latest model.



*Please see our TC-T und TR/NR brochures for recommended dimensions and \square .

Additional Plates

Stationary Plate

- Standard model with integrated sealing lip between stationary and rotating plate in steel or aluminium
- Delivered with assembly hole and bore pattern (incl. middle bore) appropriate for the table, T-slots possible
- Manufactured in Flatness Quality B including 3 off blanked machining holes
- Please note! All drill holes are blind in order to avoid the accidental blocking of the rotary indexing table

Rotary Indexing Plate

- Precision machined from aged material in a controlled temperature environment
- Recommended to be manufactured from aluminium to minimise weight
- With appropriate assembly holes and bore patterns (plate is located on the rotary indexing table with two dowel pins)

Base Plate

- 3 cable ducts as standard
- Including cut out for drive when mounted on underside, if required
- Prior to positioning your automation equipment please observe the standard hole pattern for fixing the base plate to the base frame
- T-slots possible

Guaranteed Precision

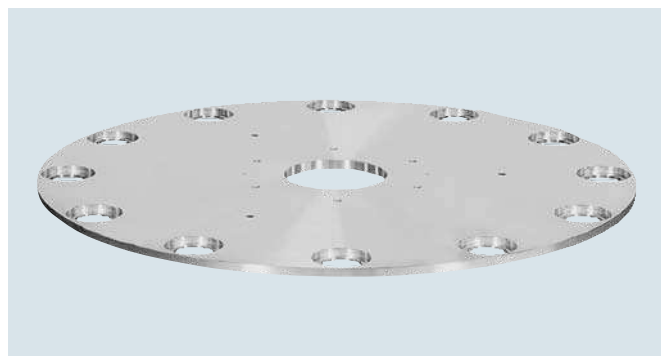
- We guarantee the highest precision for flatness and repeatability. Measurements are taken from the indexing dial plate when assembled to the rotary indexing unit. The precision is documented in an inspection certificate.
- Indexing accuracy of hole patterns – up to Ø 1800 mm ± 3" over Ø 1800 mm ± 8"
- Please forward your drawing by eMail in DXF format

Manufacturing Note

- 3 off tapped holes are machined in plates for manufacturing purposes. (blanked on stationary plates only)

Axial accuracy for additional indexing plates

Diameter (mm)	Thickness (mm)	Flatness Quality A (mm)	Flatness Quality B (mm)
≤ 600	≥ 20	0.04	0.10
	< 20	0.06	0.15
≤ 800	≥ 20	0.06	0.15
	< 20	0.07	0.18
≤ 1100	≥ 20	0.07	0.18
	< 20	0.08	0.20
≤ 1400	≥ 25	0.08	0.20
	< 25	0.10	0.25
≤ 1800	≥ 25	0.10	0.25
	< 25	0.20	0.50
≤ 2500	≥ 30	0.15	0.40
	< 30	0.25	0.55



Delivery Time

- Depending on the diameter within 4 to 6 weeks including drilling work.
Standard dimensions can be supplied at short notice.
(outer diameters: 600, 700, 800, 1000, 1100, 1200 and 1600)
- Surface treatment: 1 week additional processing time required
- Aluminium: anodised
- Steel: chemically nickel-plated or coloured brown

Machine Dimensioning

Technology that inspires

☐ Enquiry ☐ Enclosure with order

Dear Customer,

Thank you for your interest in our equipment. To ensure we construct the machine to the exact requirements of your application, we kindly ask you to answer the following questions:

Stationary plate

Material:

☐ Steel ☐ AlMg4,5Mn ☐ Special _____

Surface Treatment:

☐ Alum/Steel ☐ anodised ☐ chem. nickel-plated ☐ coloured brown

Seal:

☐ flush ☐ not flush ☐ Special _____

Dimensions Ø E _____ mm

Dimensions F _____ mm - 1 mm air gap = thickness

Dimensions Ø G _____ mm

Processing according to drawing No. _____

Rotating dial plate

Material:

☐ Steel ☐ AlMg4,5Mn ☐ Special _____

Surface Treatment:

☐ Alum/Steel ☐ anodised ☐ chem. nickel-plated ☐ coloured brown

Flatness of Ring:

☐ A ☐ B ☐ Special _____

Standard assembly and bore hole pattern:

☐ with countersinking ☐ without countersinking

Dimensions Ø C _____ mm Thickness D _____ mm

Processing according to drawing No. _____

Spacer Height

☐ for rotating ring Height _____ mm

☐ for stationary centre plate Height _____ mm

Base Plate

Material:

☐ Steel ☐ AlMg4,5Mn ☐ Special _____

Surface Treatment:

☐ Alum/Steel ☐ anodised ☐ chem. nickel-plated ☐ coloured brown
Cable duct ☐ Standard ☐ According to drawing No. _____T-slots ☐ no ☐ yes

Processing according to drawing No. _____

Round: Dimensions Ø A _____ mm Thickness B _____ mm

Square/Rect. Dim. A1 _____ mm Dim. A2 _____ mm

Thickness B _____ mm

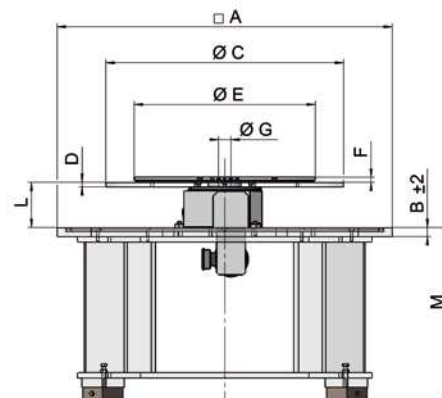
For technical enquiries

Company: _____

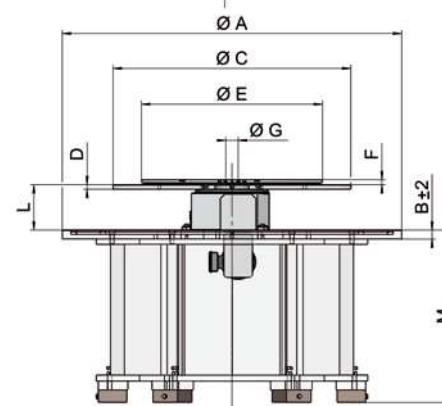
Name: _____

Department: _____

SK Series



SR Series



Rotary Indexing Table

Model _____

No. of stations _____

Dimensions L _____ mm Colour: RAL _____

Basic Frame

SR Series

☐ BG 100R ☐ BG 200R ☐ BG 300R

☐ BG 400R ☐ BG 500R Height M _____ mm

SK Series

☐ BG 100K ☐ BG 200K ☐ BG 300K

Height M _____ mm

Processing/customisation according to drawing No. _____

No. of switch cabinets _____

Machine feet ☐ yes ☐ no

Colour: RAL _____

Desired delivery date: _____

Phone: _____ Fax: _____

eMail: _____

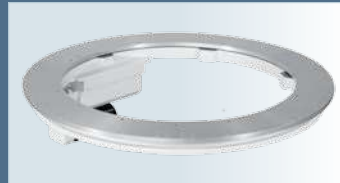


Technology that inspires

www.grafikus.de



Rotary Indexing Tables TC



Rotary Indexing Rings TR/NR



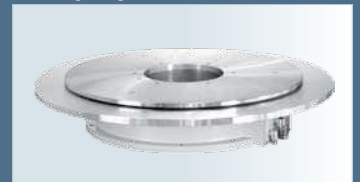
Numeric Controlled Heavy Duty Indexing Ring CR



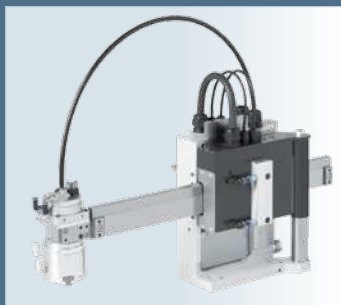
Numeric Controlled Indexing Tables NC



Torque rotary table TO Compact model



Torque rotary table TO Ring construction



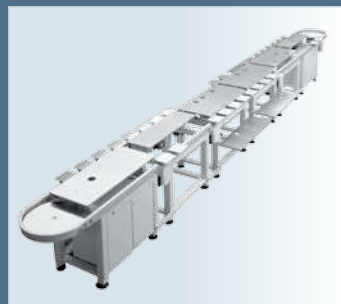
Handling device HP 140



Flexible Assembly Machine Pick-o-Mat



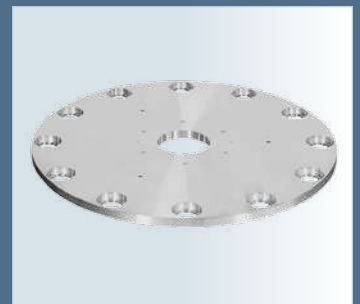
Side loading rotary unit TH



Fast Cycling Linear Assembly System LS 280



Indexing Machine Bases SR/SK



Additional indexing plate

