

# LISS



## Village Plan Update

The Liss Village Plan and Design Partnership in the past 12 months has been making steady progress organising a successful Exhibition and designing three questionnaires, one for Young People to complete, a second for parishioners and a third for the business community all designed and sent out separately.

We have now analysed the responses and reported verbally back to Liss Parish Council on our findings. These were recently displayed at the Liss Parish Council's Annual Parish Meeting held on 21 March 2012 in the Village Hall.

Having finished the ground work, we are now in the process of drafting the Parish Plan and collating photographs to accompany it. There will be a number of headings in the finalised document which will highlight concerns.

The document will highlight key issues that you the villagers have raised and we hope that we can take these forward and deliver on them. This will be done in conjunction with LPC and outside bodies. Once the Plan is finalised, it will need approval from Liss Parish Council and East Hampshire District Council.

All Parish Plans are live documents and will be available for you to read on the Parish Website. It will be updated from time to time and evolve with the village's needs.

We have set up a page on the Liss Parish website with a bi-monthly update.

We would welcome new members and if you are interested in finding out more please contact: Margaret Effenberg, Chairman on 01730 893179.

## Liss Olympic Scarecrow Festival Thursday 21<sup>st</sup> to Sunday 24<sup>th</sup> June

An Olympic-themed Scarecrow festival is being organised to take place in Liss in June. This is a community project being jointly organised by Liss Junior & Infant Schools, St Mary's Church, Liss Parish Council, Liss Horticultural Society, Liss Area Historical Society, the Triangle Centre, Puddleducks Nursery School and the 1st Liss Scouts. The event is being run in partnership with St Mary's Church Fete and Flower Festival.

Villagers are invited to build a scarecrow and display it on their property. There will be a £4 entry fee per scarecrow. Once all entries have been received, a trail map accessible on foot giving the locations of all scarecrows will be compiled and available for purchase. The public will then be invited to vote for their favourite scarecrow with a small prize awarded to the winner. Please note that the festival is not intended to be a charitable fundraiser, but simply a way of drawing the community of Liss together to celebrate the 2012 Olympics and Paralympics.

Full details of how to enter will be available shortly.

## Illegal Parking in Hill Brow Road Lay-By

Following consultation with HCC Highways & our local Police Beat Officer it has been agreed that action is necessary to alleviate the difficulties of bus services in picking up and dropping passengers off at the bus stop outside of the Tesco shop in Hill Brow Road. HCC Highways have recommended the moving of the bus stop to a built out area at the south end of the lay-by, building out at the other end to reduce illegal parking and the creation of short-term and disabled bays. It is expected that this work will be undertaken after the beginning of the new financial year in April.

# VOICE

The Newsletter of  
Liss No 32  
Parish Council 4/2012

Newman Collard Trust and LPC

# QUEEN'S JUBILEE CELEBRATIONS

**Picnic in the Park**  
**Saturday 2nd June 2012 @ 2.pm**  
**Newman Collard Playing Fields**

The Liss Royal Variety Concert to mark the Queen's 60th Jubilee. A free village event at Newman Collard Playing Fields. Bring a picnic and be entertained by an array of great local talent. Liss Band and Liss Choir are booked, and we are seeking talented people of all ages to perform. So if you can sing, dance, have a band, do magic tricks, play the spoons or have a performing dog, anything! Sign Up. If you have talent and want to perform contact

[ericgodofwind@gmail.com](mailto:ericgodofwind@gmail.com)

## Good Villager of the Year Award 2012

At the Annual Parish Meeting in March the Good Villager award was presented to Bob Perry in recognition of his contribution to village life over many years as a volunteer.



Bob has been a scout leader with Liss Scouts, is a member of the Liss Allotment Users Group and is a volunteer with the Liss Conservation Rangers who meet every month to undertake management work along the Riverside Railway Walk. But Bob's greatest contribution as a volunteer has been as one of the valued adult helpers who run the successful Crossover drop in Centre for young people, where he not only does his regular evenings but fills in at other times. Last year he was a very popular Father Christmas in Santa's Grotto at the Christmas Fair.

**Jubilee Fun** To add to the events already planned we are hoping to have the funfair at West Liss recreation ground from 5th June for a few days.

## Riverside Railway Walk

We have now nearly completed the final phase of enhancements to the Liss end of the RRW. The new buffer stop with its trolley and load has been set up and painted, and the broken seat has been replaced. Thanks go to all those who have helped with this project.

The Liss Historical Society is to provide some information boards outlining the history of the Longmoor Military Railway, and these will be located by the buffer stop and the repainted station shelter.

Having obtained funding from Hampshire County Council LPC with input from the Liss Historical Society and the Liss Conservation Rangers is re-vamping the information leaflet on the RRW. It will include information reflecting its Nature Reserve status, and its railway history showing the location of various bits of memorabilia. It is also hoped to detail a couple of walks that can be taken from the RRW through other parts of the Parish. We hope to launch this leaflet along with a set currently being produced with funding from the SDNPA.



## "White" Bridge - Refurbishment

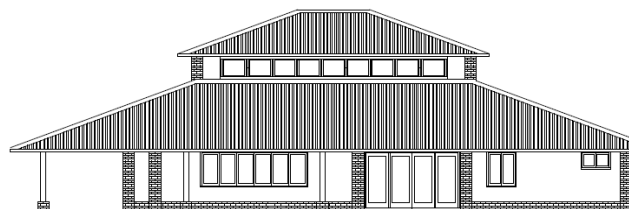
The opportunity of using funding from Hampshire County Council's Countryside Small Grants Scheme for Access improvements with panel support from Hampshire Countryside Access Forum to refurbish the bridge, arose last year. The concrete and metal base structure of the bridge is being retained with the bridge being widened with oak decking and having handrails placed on both sides. The aesthetically pleasing curvature of the bridge will remain. The structure is mainly of wood, has been designed and will be installed by the same gentlemen who designed and built the 3 main bridges (Rose, Nightingale and Briggs) which have been highly praised.

The white bridge was assessed by HCC and a funding application submitted by Liss Parish Council to HCC. This action was supported by EHDC. The successful bid and progress of the work was wholly dependent upon the structural engineer's report confirming that the base structure of the existing bridge and its abutments could support the new superstructure. The OK from the structural engineer was only received 16th March 2012, hence the announcement made at the Annual Parish Meeting last month. Notices showing the works to be carried out are located along the walk. The work is expected to be completed shortly.



## A New Pavilion at West Liss Recreation Ground

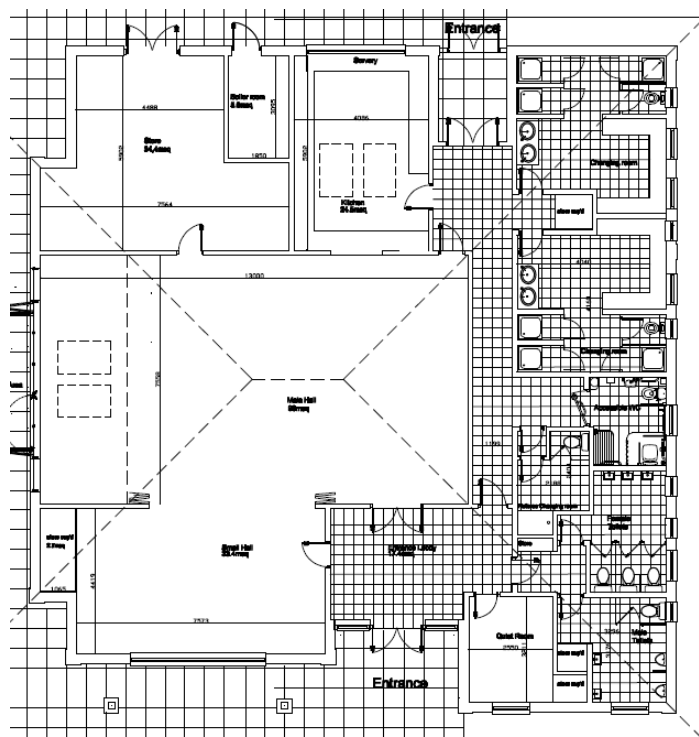
Logo designed by  
Jools Woodhouse



### ***Proposed Plans***

Due to the increasing dilapidation of the West Liss Buildings a determined effort to get the New Pavilion project underway was started in late spring last year. The original concept drawings and builder's feasibility pricing from a number of years ago were resurrected and shown to the Parish at the Village Development Group's Exhibition organised by the Village Plan & Design Partnership and held in the parish hall over the first weekend in June 2011 and the plan was broadly welcomed. This level of approval was confirmed and amplified in the replies to the September questionnaire included within the autumn Village Voice.

During late summer and autumn a committee of councillors and representatives of users of the existing facility met regularly to determine the full requirements of the building. A local architect was selected and appointed. The architect was given a brief resulting from the user group meetings and her proposals were tabled at the November council meeting.



The current plans for the building, with which we hope to submit a planning application, reflect the comments and proposals received since the architect's initial proposal. The original drawings were priced at around £250,000. The increase in scope of the building and time, have put the projected cost at significantly more than the original figure. The Pavilion Development Advisory Committee was set up during December with a brief to drive forward and manage the project. With the increased cost in mind the committee; are investigating a number of methods of construction to seek the best compromise of cost, design and appearance. With respect to financing, we have now secured funds amounting to £183,000 made up from money already set aside by the parish, monies expected to be within the parish budget for the next two years, increased precept, the Developers fund held by EHDC, a Community Project grant and the 1st Liss scout troop. Plans for further funding from funding organisations, parish events and local donations, collections and a buy-a-brick scheme are all in place. Applications to funding organisations are awaiting planning consent, although a number of expressions of interest have been submitted.

### ***SCHEDULE OF PLANNED FUNDRAISING EVENTS***

**CAR BOOT SALE - 29th April, 2pm (Sellers from 1pm), West Liss Rec**

**LISS BAND ON THE GREEN - 17th June, 3-5pm, West Liss Rec**

**FLYING BOW BAND - 15th September, Liss Village Hall**

**COMEDY NIGHT - 10th November, Liss Village Hall**

**FOLLOW THE PROJECT ON [www.lissparishcouncil.gov.uk](http://www.lissparishcouncil.gov.uk)**

**All enquiries: Liss Parish Council [lisscouncil@aol.com](mailto:lisscouncil@aol.com) Tel: 01730 892823**

**See Overleaf HOW YOU CAN HELP.....**

### **Liss Christmas Fair - date for your diary**

After the hugely successful event last year we are very pleased to confirm that with the help of the traders in Liss and others, this much loved annual village event will be taking place on Wednesday 5th December 2012, when The Triangle Centre holds it's Craft Fair. There will be full details in the Autumn edition of Village Voice.

### **Jubilee Oak Tree**

We are delighted to announce that we have received and planted a commemorative "Jubilee Oak Tree" by the pond in the Newman Collard.

## HOW YOU CAN HELP?

1. Buy-a-brick from LPC at £5.00 each.
2. Individual or corporate cash Donation.
3. Donation of Goods or Services.
4. Show your support by helping local community groups to raise funds for this project.

NAMES OF ALL DONORS WILL BE DISPLAYED WITHIN THE NEW BUILDING.

Please speak to Liss Parish Council to understand how you can help or make a contribution to this exciting community project.

*Please ensure your details are registered when making any donation.*

*Should this project be unsuccessful for any unforeseen reason, any unused donation of £5 or over will be returned.*

**YOUR DETAILS:** NAME: ..... E-MAIL .....

ADDRESS: ..... POSTCODE: .....

**DONATION:** .....

**BUY A BRICK QUANTITY:** .....

This charity: Liss Recreation Ground No. 301871 is registered to receive Gift Aid donations and can reclaim the basic rate of income tax that is paid on certain donations received from individuals.

Please tick if you are a UK taxpayer & wish your donation to be treated as a Gift Aid donation .....

Please return this section to Liss Parish Council, The Council Room, Hill Brow Road, Liss, Hampshire, GU33 7LA.

## Allotments for the Disabled

The Parish Plan questionnaire asked if there was a need for allotments designed for the disabled. 70% of those who expressed a view supported this idea. We now need to ascertain exactly what the demand is for allotments that can be accessed by the disabled. The proposed site for such a facility would be in the new Princes Bridge allotment area at the southern end of Andlers Ash Road.

Are you are interested in having access to and using such a facility?

If so, please contact Andrea Mann at the Parish Office - 892823.

## Tribute to Tony Grant

Last month Tony Grant sadly died. We would like to pay tribute to his work not only in Liss Forest, but Liss as a whole. Tony was a very popular man a "can do" person who was devoted to improving life for Liss villagers. As Chairman of Liss Forest Resident's Association he worked tirelessly to maintain and improve the recreational areas of the Forest. He led the project to revamp the Liss village end of the Riverside Railway Walk, master minding the provision of the new buffer stop to replace the old concrete structure, the new grass area, improved footways and the renovated platform shelter. Tony also played an active role in the village Christmas celebrations and for many years was responsible for the erection of the Christmas trees in Liss and Liss Forest. Tony gave an awful lot to the village and his cheerful good humour will be greatly missed. We would like to extend our condolences to Patricia his wife. It was suggested and LPC agreed it would be appropriate to have a memorial plaque on the new buffer stop in recognition of Tony's involvement in the RRW and his hard work for the community.

## SDNP Walk Leaflets

Having obtained Sustainable Communities funding from the South Downs National Park Authority LPC is compiling a set of 10 walks that radiate out from the Village to Rogate, Selborne, Petersfield and Liphook. Some of these are circular walks and they vary in length and difficulty. The idea is to have an inaugural print run available in a presentation wallet for sale, and then to maintain the ethos of sustainability have them downloadable from our LPC website.

## Precept 2012/13

The Council has precepted £182510 for 2012/13, or £70.27 per band D dwelling. This represents an increase of £15.00 per dwelling & this sum is earmarked specifically for the West Liss pavilion development project; a similar sum is planned for 2013/14. Should the project not proceed for any reason then these amounts will be refunded to ratepayers via the annual council tax levy. This project received the wholehearted support of over 90% of the respondents to the Village Plan questionnaire circulated in the last issue of this newsletter with over 60% of respondents supporting the £15 per annum surcharge on council tax for two years. There is no increase in the precept in respect of any other costs.

## Parish Council Meetings 2012

	Time	Apr	May	Jun	Jul	Aug	Sep	Oct
Council	7.30pm	16	21	18	16		17	15
Planning	7.30pm	2 & 30	28	25	23	20	10	8
Highways	7.30pm	23				23		
Buildings	7.00pm		14				3	
Grounds	7.45pm		14				3	
Finance	7.30pm		8			6		

The Village Voice is written, edited, produced, published by Parish Councillors and delivered by them and other volunteers in order to keep the citizens of Liss informed of the actions of their elected representatives.

### Contacts:

Dick Bowery, Parish Clerk  
Phone & Fax 01730 892823

E-mail: [lissparish@aol.com](mailto:lissparish@aol.com)

Andrea Mann, Assistant Clerk:

E-mail: [lisscouncil@aol.com](mailto:lisscouncil@aol.com)

Website: [www.lissparishcouncil.gov.uk](http://www.lissparishcouncil.gov.uk)