



# The Philatelic Prospector

A publication of the Sacramento Philatelic Society

P O Box 13284

Sacramento, CA 95813

May / July 2006

## A NOTE FROM THE PRESIDENT

How fortunate we are to have such a fine club! No matter where I go, or whom across the world I chat with, in philatelic circles, many are impressed with the Sacramento Philatelic Society. Now you may be wondering...why would someone, not in Sacramento, be impressed with us? Let me tell you...



**We have a large club**, in fact one of the largest Philatelic Societies, with nearly 250 members. Many clubs I speak with have a much smaller roster and wish they had more members. It is harder for a club of 25 to do things than it is with one of 250. Our size gives way to events like the Easter Seals Benefit Show and SACAPEX. It also gains National attention and makes an APS Show a reality, and not a dream.

Each week **our members volunteer** in many ways. Sometimes it is to help put a stamp show on, like our upcoming SACAPEX, or speaking on a collecting interest, and even something as simple to do as taking the time to chat with new members. All collectors have something interesting to share. I have yet to find a collector who is not interested in hearing more about this hobby we love and enjoy.

**We have a Club Circuit.** Not many stamp clubs are fortunate to have a circuit or bourse, let alone see the kind of volume we do in our Club Circuit each week. Again, volunteers help make that a possibility. Members devote time to sort, identify, price, load and unload the circuit, all to see that our members have something to enjoy.

**Members take time to serve** you as Officers, Directors, & committee persons. Members are educated to preserving such a fine organization. I am honored to serve each of you as President this year. It is a privilege to be involved in such a fine and upstanding organization in the community. To those who have served and continue to volunteer...a heart felt **"Thank You"** goes out to you.

It is volunteering that keeps this club healthy, informed, and fun. I encourage every member to find a way to contribute. It is rewarding in so many ways. **Volunteer** to help with SACAPEX, contact Harry to **share** with the club, **introduce yourself** to a new member or even an old member you haven't spoken with before. **Reach out** and find the great treasure we have in the Sacramento Philatelic Society.

Happy Stamping!

Dean Carl

## SACAPEX 2006

Time is going fast & plans for the SACAPEX show are being made to have another great year. Most of our dealers from 2005 will be there, the special club meetings are being planned, exhibits are being requested, and a lot of volunteers are needed. It is the volunteers that assure a great show.

If you would be willing to involve yourself, please contact John Sumpter. He will be looking for volunteers & **YOU** can make his job easier if you contact him.

As usual, the show will be held on the first weekend in November, the 4<sup>th</sup> & 5<sup>th</sup>, at the Scottish Rite Temple.

**We will need volunteers** for Friday night, the 3<sup>rd</sup>, to see that everything is set up & ready for the opening at 10:00 on Saturday. This is the critical point for SACAPEX. Sometimes we have to improvise about something, but improvisation is **NOT** something we can have on Friday. **WE NEED YOU!!**

Plan now to be involved. If each of us do a little, the whole project is made simple.

## SILENT BID SALE – August 9

**It is time to start getting your material ready for the next "Silent Bid Sale". The next silent auction will be on August 9<sup>th</sup>.**

**Paperwork can be picked up at the regular meeting on July 26<sup>th</sup>.**

**Individual items & flat lots will be collected on August 2<sup>nd</sup>. Bulk lots will need to be delivered prior to 7:00 on August 9<sup>th</sup>.**

## NEW OFFICERS FOR 2006-7

The elected officers for 2006-7 are:

President	Dean Carl
Vice President	John Sumpter
Secretary	Al Williams
Treasurer	John Pavalasky
Board of Directors 2006-2009	Nabil Haddad
	Ernie Teays

The new officers were elected on May 31 & took office at the meeting on June 7.

## In Memory of Gus Blanchard

August "Gus" F. Blanchard Died peacefully at home in West Sacramento June 27, 2006 at the age of 89. He was born December 28, 1916 at Oakland, California.

Gus graduated from San Francisco State University in 1942 with a B.A. in music, and the University of the Pacific in 1958 with an M.A. in education.

He had three overlapping careers spanning more than 70 years: music, public education, and real estate. His musical career in jazz began in 1930, and he served in WWII as a musician and bandleader in England and France. He returned to professional music in 1977, and participated in musical tours in Western Europe, Russia, and China.

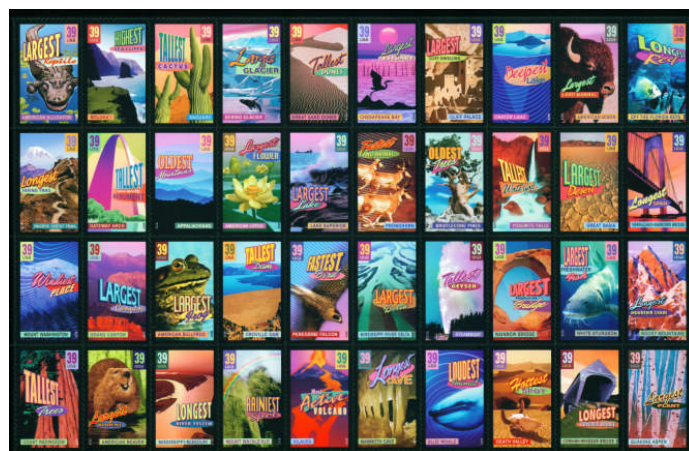
Gus was also active in the Sacramento Traditional Jazz Society where he served on the Board of Directors and managed publicity and marketing for the Jazz Jubilee.

During his 27 year career in public education Gus taught in the Washington Unified School District, and was principal and superintendent at Bryte Elementary School District. He was also principal and assistant superintendent in the Davis Joint Unified School District, and was director of public information at the Sacramento City Unified School District. He retired in 1977.

His third career was in real estate and spanned from 1967 to 2003 and included many years as a broker and leasing agent for industrial properties.

Gus was an active member of the Sacramento Philatelic Society, serving in many capacities including BOD and Chairman of the BOD. He could usually be found at most meetings, sitting at his favorite location. We do miss Gus.

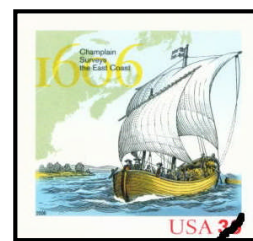
## NEW ISSUES



issued May 27, 2006 @ Washington D.C.



June 10 @ New York, NY



May 28 @ Washington D.C.

## 2006 MEMBERSHIP

**Debbie Jean** reports that we have over 240 members thus far in 2006. There are several who have not yet renewed, but, we will still take your renewals.

The following new members should be added to your roster:

1797	Michael Yui	393-0412
1798	Valeriy Filyk	599-1973
1799	Alet Zak	530-740-0111
1800	Veronica Java	683-4299
1801	Raymond Hinkley	922-3029
1802	Phyllis Harrison	689-9505
1803	Dennis Harrison	689-9505

## NEW LIFE MEMBER

### What is a Life Member?

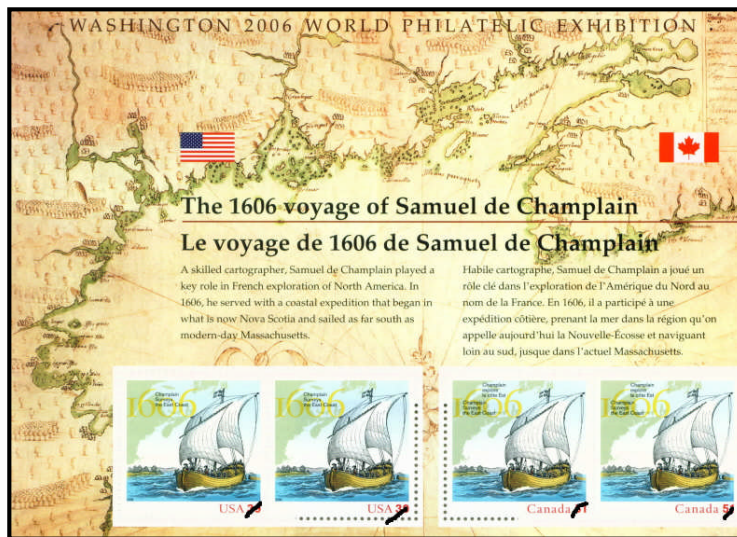
Life members shall be those who have achieved distinction in the field of philately, and those who have rendered a longtime service to the Society, and shall have all privileges of a regular member. (Article I – Section 1d – SPS by-laws)

We currently have three 'Life Members': Harriet Brown, Frances Pendleton, & Bill Oliver. The BOD have decided to add another, bringing the number back up to four.

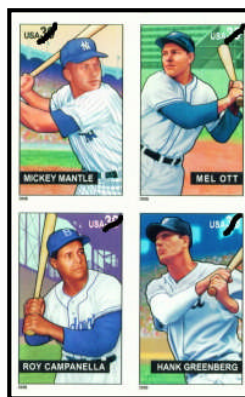
### Who will it be?

**That is a secret!!! (If you know – DON'T TELL)**

Plans are to present the new 'Life Membership' at the meeting on August 2<sup>nd</sup>. Plan on being with us that night. We will have refreshments to help celebrate this event.



May 28 @ Washington D.C.



July 15 @ Bronx, NY

(note: the US Champlain stamp (sa) measures 30 cm x 30 cm & the US Champlain (wa from joint sheet) measures 40 cm x 40 cm.)



## REVENUE ISSUES

### Camara Municipal de Loulé-Stamps and Notes

by Joe Ross

Anyone know where Loulé is? I decided to find out a little more about the city.

Loulé is a rural administrative market town located 18 km northeast of Faro, which is on the southern coast of Portugal. The town has some 20,000 residents, mainly producing souvenirs of copperware, leather, cane, and wood, or servicing the tourist industry. There is a museum devoted to the local industry of dried fruits, and it is interesting to see how these products are prepared for the public.

There are some remains of a 12th Century Arab castle that was virtually destroyed by an earthquake in 1755. There is also the Church of São Clemente, damaged in the 13th Century; however, its Gothic arches and side chapels have survived from the 16th Century. there



A few years ago, I purchased some revenue stamps from Camara Municipal de Loulé. I recognized that they were from Portugal and turned to Barata's catalog of Portuguese revenue stamps but was unable to find them as they were unlisted. Here is my short listing:



Camara Municipal de Loulé  
Imposto Ad Valorem  
Unwatermarked wove paper perf 12½

\$01	green/black
\$02	green/black
\$10	green/black
\$50	green/black
\$80	green/black
\$100	green/black



Camara Municipal de Loulé  
Imposto Ad Valorem  
Unwatermarked wove paper perf 11

\$05*	blue/black
\$09	blue/black
\$10	blue/black
\$20*	blue/black
\$60	blue/black

\*Note: Black values with two different font sizes.

## COUNCIL NEWS

### News of the Council

Let me introduce my self, my name is Hank Washauer and I have been appointed to be Communications Chairman for the Council.

It will be my aim to put together short articles for the individual club newsletters.

I would like to call your attention the Council website, <http://www.norcalstamps.org> (Goto this website by typing the preceding information into any browser such as Internet Explorer, Netscape or Yahoo home page) as it has excellent complete information about the Council, upcoming events, contact lists, archived council newsletters and links to other philatelic sites. It is easy to use the links on the left side of the site to find information. Please explore the site as it we are sure that you will find it an easy way to keep up with our current events and news.

The site is updated as often as necessary and we especially strive to keep club contact information "up-to-date". In the News section, upcoming shows are always highlighted with information about dates, location and events.

Visit our site and let us know if there are errors or features you would like included. We will always appreciate help and suggestions!

## NEWS FROM THE APS

The American Philatelic Society's **STAMPSHOW 2007** will be held on August 9-12 at Oregon Convention Center, 777 NE MLK Jr. Blvd., Portland, OR.

## SPS CALENDAR

**Regular meetings are held  
every Wednesday evening from 7 -9  
at the Easter Seal Center, 3205 Hurley Way.**

Jul	26	Meeting, 2¢ boxes, <b>no club circuit.</b>
Aug	2	Meeting, 2¢ boxes, club circuit.
		<b>Special Program – Anson Stout</b>
		<b>Special Program – Identifying stamps</b>
	9	<b>Silent Bid Sale, no club circuit.</b>
	14	<b>BOD meeting (7:30)</b>
	16	Meeting, 2¢ boxes, club circuit.
		<b>Special Program – stamp soaking</b>
	23	Meeting, 2¢ boxes, club circuit.
	30	Meeting, 2¢ boxes, club circuit.
		<b>Special Program – Vince Izdepski</b>
Sep	6	Meeting, 2¢ boxes, club circuit.
		<b>Special Program – Identifying stamps</b>
	11	<b>BOD meeting (7:30)</b>
	13	Meeting, 2¢ boxes, club circuit.
	20	Meeting, 2¢ boxes, club circuit.
	27	Meeting, 2¢ boxes, club circuit.

Each meeting we normally have our club circuit and penny boxes available for your shopping pleasures. There are also members who enjoy just talking about their collections or helping you with yours. You might even find a member with a similar interest as you have and you can initiate a stamp swap. Come see us – it's a lot of fun. 'Shoe Boxes' of 2¢ stamps can be taken home to search through during the week.

### Identifying stamps

If you would like to help, **Katie** is conducting a stamp identification workshop at the first meeting each month. This not only helps the circuit, but keeps you sharp as well.

## Officers & Board of Directors

President	Dean Carl
Vice President	John Sumpter
Secretary	Al Williams
Treasurer	John Pavalasky

### BOD

Brian Freeman	(thru 5/2007)
Katie Pavalasky	(thru 5/2007)
Harry Mueggenburg	(thru 5/2008)
Jim Stewart	(thru 5/2008) ( <b>Chairman</b> )
Nabil Haddad	(thru 5/2009)
Ernie Teays	(thru 5/2009)
Dean Carl	(thru 5/2007)

### Committee Chairmen

Easter Seal Show	Katie Pavalasky
Library	Ken Hilmer
Membership	Debbie Jean Hopkins
Programs	Harry Mueggenburg
Prospector	Arlene Simmons
SACAPEX 2006	John Sumpter
Website	Dean Carl

## Stamp Shows In Our Area For 2006

Save the dates for the following shows in our area.

SEP	2-3	Great American Stamp Expo 770 Montague Expressway San Jose
OCT	6-8	<b>WINEPEX</b> Marin Civic Center Exhibit Hall San Rafael
OCT	20-22	Filatellic Fiesta Civic Auditorium San Jose
OCT	28-29	East Bay Collectors Club Civic Crnter Walnut Creek
<b>NOV</b>	<b>4-5</b>	<b>SACAPEX</b> Scottish Rite Temple Sacramento
NOV	16-19	<b>SC Coin, Stamp &amp; Collectible Expo</b> Santa Clara Convention Center 5001 Great America Pkwy. Santa Clara
DEC	2-3	<b>PENPEX</b> Redwood City
<b>JAN</b>	<b>10-11</b>	<b>Sacramento Stamp Fair</b> Knights of Columbus Hall 5961 Newman Ct. Sacramento

## VISIT THE SPS WEBSITE

CAN'T FIND YOU PROSPECTOR?  
CAN'T REMEMBER WHAT IS WHEN?

It's easy to find what you need by visiting our website. **Dean Carl** continues to amaze those of us who are computer challenged. Updates get done so quickly that we wonder how he does it.

The SPS website can be accessed at

**[sacramentophilatelicsociety.org](http://sacramentophilatelicsociety.org)**

The website is where you can keep up with current activities, future events, see copies of the Prospector from the last twelve months, and explore links to other websites of interest.

## Useful (or Useless) Information

All **first day cancellations** may be received after affixing stamps and sending to:

**Customer Affixed Envelopes**

**Postmaster**

\_\_\_\_\_ (**first day city**)  
\_\_\_\_\_ - **9991 (5 digit ZIP + 9991)**

The normal limit to submit for FDCs is 20 per request. If you want them returned without addresses, you must enclose a self addressed envelope, with sufficient postage applied, to insure their return. There is no charge for this service.