

**1 in 5 of us have tried to
commit suicide**



**9 in 10 of us have been
verbally abused**



1 in 10 of us are HIV positive



**4 in 5 of us have been
bullied at school**



**3 in 5 of us have been
beaten up**



**1 in 4 of us suffer from
alcohol or drug addiction**

**ARE WE
REALLY GOING TO
LET THIS KEEP
HAPPENING?**



Registered Charity No. 1070904

**The Lesbian & Gay Foundation
Annual Review 2006/2007**



Registered Charity No.
1070904

Picture:
The LGF staff team.



DAVID MCGOVERN - CHAIR OF THE BOARD OF TRUSTEES

We can do so much more...

It can be easy to forget how wide the span of activity of the Lesbian & Gay Foundation is and how much impact that all of our service provision has on the lesbian, gay and bisexual communities across the North West and beyond.

In my time volunteering for the LGF, I have always been aware of the amount of work that goes on in the organisation and the dedication of all of our staff and volunteers, but the level of commitment I have found since becoming Chair of the Board of Trustees is truly inspiring.

I have been tremendously moved by numerous people's stories about how their interaction with the LGF has changed their lives forever, and yes in

some cases even saved their lives. You only have to look at some of the statistics featured in this Annual Review to see some of the challenges we face on a daily basis and how despite the odds, we are able to rise to these challenges time and time again. This is only because of the support we receive from our fantastic staff and volunteers, who are crucial in making sure we can further develop as an organisation and can continue to respond to the many diverse needs of our different communities.

However, at the end of the day all of our achievements and commitment, enthusiasm and the skills that we have spent so many years developing mean little, if we do not secure funding to

carry out our work. I am honoured to be the Chair of the Board of Trustees for a charity which is providing more direct services to more lesbian, gay and bisexual people than any other charity of its kind in the country.

But I know we can do so much more.

Please take time to read this, our Annual Review for 2006/07 and please take a moment to consider financially supporting the LGF. Your help will mean so very much to so many people.

I am financially supporting the LGF, will you join me?

DAVID



PAUL MARTIN - CHIEF EXECUTIVE

Your support is vital...

Every year I have been proud to tell you how much the people of the Lesbian & Gay Foundation have achieved over the last year, and how ambitious our plans are for the year ahead. This year is no exception.

However, the truth is whilst we are achieving more than ever before, it is becoming increasingly more difficult to gain funding for the work that we are doing. Furthermore there are many projects we are increasingly asked to take on, but cannot because of limitations on our finances.

The world of charity funding is changing and we can no longer rely on the public sector to fund services which we know we need as lesbian, gay and bisexual

people. The LGF has never made a direct request for financial support before. But as we look to the future we know that in order to survive and indeed thrive, we need our community to financially support us, as you can be assured that we'll do everything we can to support you in your moment of need.

It is our long term goal that the North West's LGB community are amongst the most well informed, safest and healthiest in the country. This is where you come in.

Throughout this Annual Review you will see some of the real life situations that our service users experience and need the LGF's support with. You will also learn about how we are able to support

them through the vast range of services that we are currently able to provide. But we cannot continue to do this without the support of our own community.

An End to Homophobia? We're in it for the long haul – will you help us?

Please support the LGF any way that you can and help us build on the fantastic achievements that I am so proud we have been able to achieve - so far.

You do have the potential to end homophobia by financially supporting the LGF. Thank you.

With very best wishes.

PAUL

We believe in a fair and equal society where all lesbian, gay and bisexual people can achieve their full potential.

Whilst there have been a lot of positive changes for lesbian, gay and bisexual people over the last few years, the fact remains that homophobia is still having devastating effects. If we're lucky we survive and it can make us stronger, it can make us who we are. But it really should have been easier; it shouldn't have to be so tough.

"You can establish all the equality you like through the laws of the land. But that is really only the beginning. It's the basis. Prejudice will remain – and it will not go away on its own accord. It has to be encouraged to go away. There should be agencies like the Lesbian and Gay Foundation, supported by the community at large in terms of funding, volunteering and everything else."

LGF Patron Sir Ian McKellen

YOU HAVE THE POTENTIAL TO END HOMOPHOBIA

Imagine a world where lesbian, gay and bisexual people are free to live their lives without fear, without prejudice and without discrimination. A world where we have the potential to be anybody we want to be.

We know that there is so much more work to be done to end homophobia and we very much need your help.

To deliver our activities, the Lesbian and Gay Foundation is reliant on the support and enthusiasm of our volunteers. We currently have over 150 dedicated volunteers, many of whom are members of the LGF, who provide over 20,000 hours of vital volunteering across all our services, each year.

We also need your help financially. Please support the LGF by regularly donating to our supporter's scheme, and join us today

The Lesbian and Gay Foundation is a community based charity working to end homophobia and empower people across the North West of England and beyond. Last year we provided advice, information, support and services to over 40,000 people. As a result, we directly supported more lesbian, gay and bisexual people than any other organisation of our kind in the UK.

Despite positive changes in legislation and society, we are still not treated equally. Everyday we are reminded of this, because of what our community and service users tell us. As long as homophobia continues to affect the lives of LGB people, we will continue our work to challenge the status quo, to educate society, and to support people in our communities who have suffered because of it.

in putting an end to homophobia.

- **£5** a month could pay for 120 safer sex packs per year to help prevent the transmission of HIV and other STIs.
- **£10** a month could pay for 750 new community information resources, such as our Guide to LGB Rights.
- **£20** a month could pay for 12 hours of advice, information and support on our Helpline each year.
- **£30** a month could pay for a poster campaign to help schools challenge homophobic bullying throughout the year.
- **£40** a month could pay for a complete course of face-to-face counselling, provided by counsellors who understand LGB issues.

Please join the LGF today and help us end homophobia and empower more people than ever before.

Reg. Charity No. 1070904



YES! I want to help end homophobia!

Standing Order Form

Account to be debited (Your Bank Details)

Bank Name

Bank Branch

Bank Postcode

Sort Code

Account Number

Account Name

Payment Details

Donation amount

£

Date of first payment

DD / MM / YY

When paid (please tick box)

☐

Monthly
(to be paid until further notice).

☐

One-off donation

Your contact information

Full Name

Address Line 1

Address Line 2

Address Line 3

Town/City

County

Postcode

Telephone Number

Email Address

Please note that the LGF will use this contact information only, and it will not be shared with any third parties without first requesting your permission.

Signed

Customer signature(s)

Date

DD / MM / YY

Beneficiary Details (Our Bank Details)

Bank

Barclays Bank

Branch Details

South Manchester
Group of Branches,
876 Stockport Road,
Levenshulme, M19 3BP

Sort Code

2 0 2 6 2 0

Account Number

3 0 4 7 6 4 0 4

Beneficiary Name

L&GF Supporters Scheme

The Lesbian & Gay Foundation, 4th Floor, Princess House,
105-107 Princess Street, Manchester M1 6DD Tel: 0161 235 8035

Thank you.

Please detach this panel and post to:



FREEPOST RLZG-SLUJ-RXKJ

**The Lesbian & Gay Foundation,
4th Floor, Princess House,**

105-107 Princess Street, Manchester, M1 6DD.

ARE WE REALLY GOING TO LET THIS KEEP HAPPENING TO US?



(1) Source: Neighbourhood Renewal Unit & Our House Project, Nottinghamshire (2004). (Figures rounded to the nearest 5%)

IT'S A FACT THAT...

Young LGBs represent 30% of all completed suicides and many more experience suicidal thoughts. Feelings of isolation; family and peer pressures; 'not fitting in' and internal homophobia can all contribute to a sense of hopelessness and isolation.

1 in 5 of us have tried to commit suicide.⁽¹⁾

"Some mornings I wake up and I'm just overwhelmed by feelings of self-hate. I just couldn't go and talk about this with anybody else"

LGF Face to Face Counselling Client

- In 2006/07 through our telephone **Helpline and email support service**, over 3,000 people were able to talk through their worries and concerns with a trained advisor.
- During 1,808 visits to **groupwork sessions**, people were able to explore coming out; meet others; and gain vital support and information in a safe and supportive environment.
- We provided 790 hours of **counselling**, helping to improve the mental health of LGB people across Greater Manchester and into the North West.
- 791 people received **training** from the LGF, enabling them to develop skills and promote their own health and wellbeing.

9 in 10 of us have been verbally abused.⁽²⁾

"I once made the mistake of telling a doctor that I was a lesbian. The way he responded made me feel like I was scum. He was really rude and made out that either I was being silly and should go out and meet a man or that I was ill and should keep myself locked up. I don't think I would talk about my sexuality if I was to use a service, unless it was somewhere like here (The Lesbian and Gay Foundation)."

From Minority Report (Report on Substance Misuse and Treatment Needs amongst the LGBT community in Manchester. The Lesbian and Gay Foundation, Department of Health, University of Central Lancashire, 2005)

- To ensure **lesbian, gay and bisexual people's voices are heard**, the LGF is represented on a number of local, regional and national bodies including the North West Equality and Diversity Group, Greater Manchester Sexual Health Network and the Department of Health Sexual Orientation and Gender Identity Advisory Group, amongst many others.
- contribution to increasing access to information and services to lesbian gay and bisexual people throughout the North West and beyond.
- We produced and distributed over 185,000 copies of **outnorthwest** and a further 584,936 **information resources** informing and advising LGB people and our supporters – including vital information on local services, sexual health, mental health and drug and alcohol related issues.
- In 2006/07 our **website** took almost 7 million hits, making a significant



(2) Source: Education Policy Research Unit, Institute of Education, University of London, Stonewall (2005). (Figures rounded to the nearest 5%)

IT'S A FACT THAT...

Verbal abuse against lesbian, gay and bisexual people often gets swept under the carpet. So many of us have experienced name calling when we are growing up, that it becomes too familiar. Society's refusal to accept homophobic language as seriously as other forms of verbal abuse doesn't help. In a survey amongst the LGB community in Manchester, 75% of those verbally abused did not feel able to report the matter to the police for fear of not being taken seriously or through worries about being 'outed'.

All photos posed by models.



IT'S A FACT THAT...

Because of a lack of mass-media campaigns, many gay and bisexual men do not have access to safer sex information, let alone free provision of condoms and lube. 84% of new HIV infections acquired in the UK are still amongst gay and bisexual men. A third of gay men are still having unprotected sex and a similar number are unaware they have the HIV virus.



IT'S A FACT THAT...

Supposedly, our school days are meant to be the happiest days of our lives. And yet for a considerable number of young lesbian, gay and bisexual people, it can be a time of fear and torment. According to a recent survey, half of teachers ignore homophobic language when they hear it. This means that of current secondary school pupils, 143,000 children have suffered from anti-gay name calling, 64,000 have been physically attacked and 26,000 have had death threats.

All photos posed by models.

1 in 10 of us are HIV positive. ⁽³⁾

"Facing up to HIV is a big deal. Organisations like LGF that are out there to help with the downers and simple technical problems that can come about as a consequence of carrying this virus around with us, are a real bonus. We need to keep on banging home the message of safer sex, education and awareness. There is still a lot of stigma, even within the gay community - assumptions are still being made that only older gay men get HIV or it's not that big a deal and pills will control it."

Interview from the World Aids Day 2006 issue of outnorthwest

LGF's Health services continue to have a strong focus around HIV prevention and sexual health promotion through our Condom and Lube Distribution Scheme, the outreach clinic and education and training.

- Through providing **safer sex packs**, we enabled men to have safer sex over 587,000 times last year within Greater Manchester through our **Free Condom and Lube Distribution Scheme**.

- Funding pressures experienced by the local NHS has impeded the re-launch of **The Clinic** which is now anticipated later in 2007. However the successful continuation of the **outreach sexual health clinic** reached over 190 men last year.

- A new health guide focusing on HIV was produced, entitled '**The F**k stops with you**'. Targeted at men who have sex with men, it considers the wide ranging effects that this virus is still having on all areas of our lives.

4 in 5 of us have been bullied at school. ⁽⁴⁾

"I was always bullied at school but in senior school the bullying turned more sinister and homophobic. As soon as teachers would leave the room the bullying began. If I was alone in the playground a huge gang would crowd around me to hide the violence from any of the teachers. Beatings were regular and teachers did little to stop it, as the kids were too violent to stop. I ended up leaving school with no qualifications. Regrettably at college the homophobic bullying continued and I tried to end it all, scarred by depression and phobias. I can't work which means taxpayers fund me to survive. Homophobia left unchallenged costs, in many ways."

Letter received by LGF for Exceeding Expectations, name and address supplied

- Building on the work of the former Peer Support Project, we produced a new booklet '**LGB Youth Matters**', aiming to push forward the youth agenda.
- '**Exceeding Expectations**' is an unprecedented collaboration between the Lesbian and Gay Foundation, Manchester City Council Children's

Services, Manchester NHS Healthy Schools Partnership, Albert Kennedy Trust and Hope Theatre Company. The project which aims to end homophobia through education, launched a new quarterly newsletter, which reached every school across Manchester and was distributed to all 12,000 adults working in schools across the city.

(5) Source: Education Policy Research Unit (2005). (Figures rounded to the nearest 5%)



IT'S A FACT THAT...

Lesbian, gay and bisexual people remain a target for violent attacks because of our sexuality, with the problem worsened by fear of further repercussions if such attacks are reported. Because the LGF knew that under reporting of homophobic hate crime was a problem throughout the UK, we undertook our own research in Manchester's Gay Village. Strikingly, 93% of people felt there was a need to have designated support staff for the LGBT Community.

(6) Source: Health Survey for England (2002). (Figures rounded to the nearest 5%)



IT'S A FACT THAT...

Living in a homophobic society and hiding our sexuality from family, friends and colleagues can be very stressful. Many researchers have highlighted the fact that lesbian, gay and bisexual people experience significantly higher levels of alcohol, drug and tobacco misuse, due to issues specifically related to sexual orientation. This is often found to be linked to the fact that many safe social spaces for LGB people are pubs and clubs on the gay scene.

All photos posed by models.

3 in 5 of us have been beaten up. (5)

"Within a month of coming out to my parents, I spent the night in A&E after being attacked outside a gay nightclub by four guys. It was like "hello, welcome to the gay world"... and I've still got the scars as a reminder. Even now, I feel slightly wary about being openly gay in certain places and situations, although I've made sure that it hasn't stopped me from going out. It shouldn't have to be this way."

One young man's experience reporting to The Lesbian & Gay Foundation

- Following research with local LGBT people in 2005, the Lesbian and Gay Foundation was successful in campaigning for a dedicated **LGBT Liaison Officer** to provide a regular weekly service at the home of the LGF. The UK's first ever **LGBT Police Support team, based at the LGF's offices in the heart of the LGBT community**, now operates a police surgery every Thursday at 6pm. They help with any issues that the LGBT community need support with, particularly for LGBT people who have traditionally felt uneasy about calling the police or asking for their support

in the past. Issues such as hate crime, domestic violence, bullying, nuisance neighbours, and homophobia are all areas that this service is specifically designed to deal with.

- Our **health and support services** also include a counselling service, helpline advice service, substance misuse project and sex workers project.
- 11,982 people **walked through our doors** to receive crisis intervention, work in partnership or simply to ask for information, advice or training.

"We're still aware that hate crime is vastly under-reported and we need the LGBT community to help us obtain an even clearer picture of hate crime across Greater Manchester. The Lesbian and Gay Foundation has always played a vital role in enabling us to provide invaluable additional methods to communicate crime prevention messages and encourage the reporting of hate crime to LGBT communities in the area."

- Greater Manchester PC and LGBT Liaison Officer Sam Tennant

1 in 4 of us suffer from alcohol and drug addiction. (6)

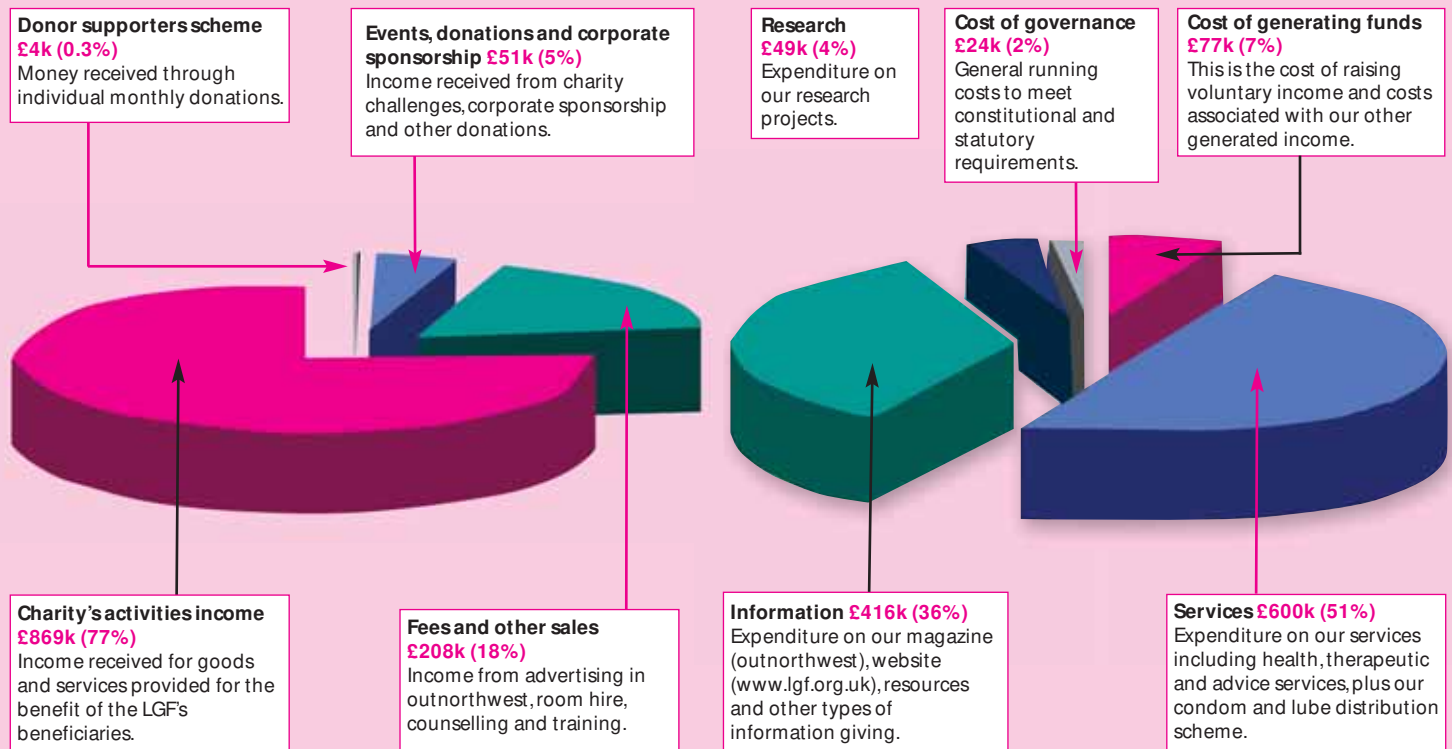
"The problem with drugs is that you think you're invincible and you're having such a good time that you don't think about whether you're getting yourself into trouble or you need help, so you have to wait until it all becomes clear before you pull yourself together."

From Minority Report (Report on Substance Misuse and Treatment Needs amongst the LGBT community in Manchester. The Lesbian and Gay Foundation, Department of Health, University of Central Lancashire, 2005)

- The LGF has been involved, and continues to be involved, in a number of research projects including an **alcohol and drug dependency survey** and a **women's sex survey**. This work is being completed in partnership with the University of Central Lancashire. Data gathered from research will assist the LGF in further enhancing existing services and in the development of new services.
- Our **Substance Misuse Project** successfully piloted a sexuality awareness-training programme to mainstream drugs and alcohol agencies and staff across Manchester.
- In 2006/07, a total of 774,503 people accessed the LGF via our **services and resources** (excluding our free condom and lube distribution scheme).

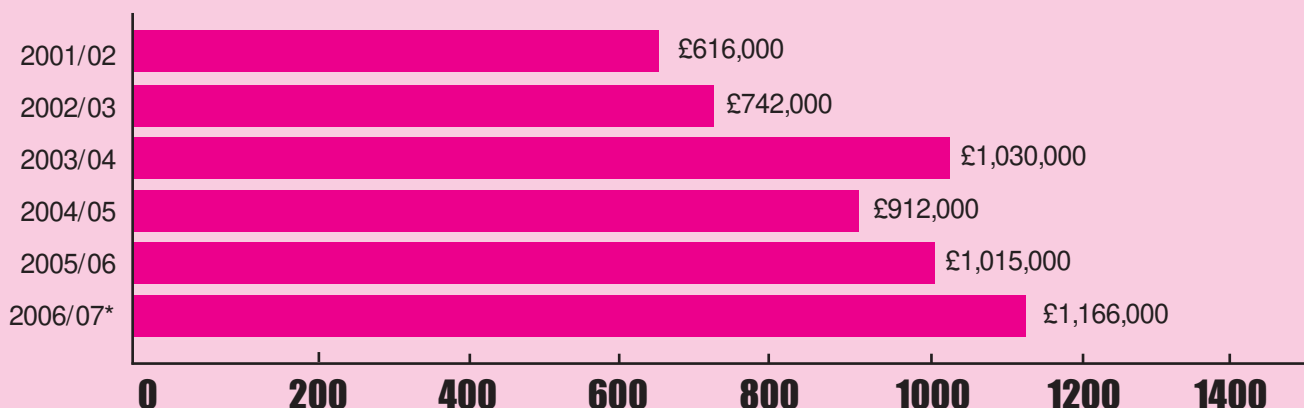
Where our resources came from 2006/07*

The Lesbian and Gay Foundation cannot exist without continuing financial investment from a range of funders, grant makers and donors. We would like to thank every one of them for their vital support.



Expenditure 2001-2007

Over the past six years £5.4m has been spent on 'Ending Homophobia, Empowering People'



* 2006/07 income and expenditure excludes LGF's share of Operation Fundraiser. The Lesbian and Gay Foundation's audited statutory accounts will be ratified by the members at their Annual General Meeting on Friday 28th September 2007. A full set of these accounts will be available after this date by writing to The Company Secretary, LGF Ltd, Princess House, 105-107 Princess Street, Manchester, M1 6DD or emailing: info@lgf.org.uk

Please support...

The Lesbian and Gay Foundation, 4th Floor, Princess House, 105-107 Princess Street, Manchester, M1 6DD
Tel: 0161 235 8035 Fax: 0161 235 8036 Email: info@lgf.org.uk Web: www.lgf.org.uk

THANK YOU

The Lesbian & Gay Foundation would like to thank the following for all their help and support over the last year.

42nd Street
Age Concern
Albert Kennedy Trust
All LGF Research participants
Amicus LGBT Group
APM Arts
Ashton, Leigh & Wigan PCT
AstaBGay.com
Awards for All
AXM
Baille Street Gym
Barnard Atkins Ltd
Bar Below
Bar Risa
Bar Rogue
Barnardos Health Through Action
Basement Sauna Complex
Belize Catering
Bent
Bishop of Manchester
Bishops Advisory Group on Sexuality
Black Health Agency
Blackpool Accommodation for Gays
Blackpool Central Library
Blackpool CVS
Blackpool Pride
Blades Hair Design
Blue Banana Agency
Body Positive North West
Bolton PCT
Bradford University
Brian Hore Unit
Britannia Hotel
Bury 6th Form College
Bury PCT
Capacity Builders
Cast of Coronation Street
Change Up – ICT
CHAPS Partnership
Cheshire PCT's
Churchills
Clone Zone
Club Alter Ego
Condom Models
Consortium of LGBT Community & Voluntary Organisations
Connexions
Community Chest
Community Futures
Company Bar
Costco
Coyotes
Cruz 101
Cumbria PCT
Department for Education & Skills
Department of Health
Department of Transport & Industry
Drug & Alcohol Sexual Health Service
Durex
Ear to the Ground
East Manchester Beacon's Project

Eden
Edge Hill University
Eon
Essential
Federation
FFLAG (Families & Friends of Lesbians and Gays)
Foreafters.co.uk
Fylde PCT
Gaia
Gay Men Fighting AIDS
George House Trust
GLADD
Glentop Stimulant Service
Government Office North West
Great British Bear Bash
Greater Manchester Council for Voluntary Service
Greater Manchester Health Protection Agency
Greater Manchester Police
Greater Manchester Police Authority
Greater Manchester Sexual Health Network
Greater Manchester Strategic Health Unit
Green Room
H20 Sauna
Health First
Heat Sauna
Heywood & Middleton PCT
Hope Theatre Company
Holocaust Memorial Day Trust
Hollywood Lounge & Studio
Honeycombe Sauna
Homotopia
Hot Village
Hygenium
Icebreakers
Idaho Technology Limited
International Day Against Homophobia
In The Pink Leisure Ltd
Jarman Clinic
Job Centre Plus
John Moores University
Joseph Rowntree Trust
Kath Locke Centre
Kelvin Graphics
Legends
LGBT Health Summit Steering Group
LGF Patrons
LGF Staff
LGF Volunteers
LGF Social Work Placements
Lifeshare
Lifeline
Lightclare Clinic
Lloyds TSB Foundation England
McKeown Harkinson Solicitors
Manchester Community Alcohol Team
Manchester DAST
Manchester and Salford Drug Action Teams
Manchester City Council
Manchester Print Graphics
MCC Report Line
Manchester Drugs Service

Manchester Lesbian & Gay Chorus
Manchester Mental Health & Social Care trust
Manchester Metropolitan University
Manchester Pride Ltd
Manchester Primary Care Trust
Manchester Public Health Development Service
Manchester Centre for Sexual Health
Manchester Joint Health Unit
Manchester University
Manhunt.net
Manto
Marketing Manchester
MCIN
Midwifery Service – Zion Centre, Moss Side
Millivres
NAAPS
Napoleons
Neighbourhood Renewal Fund
New Deal for East Manchester
New Start Trust
Newton Heath GP
New Union Hotel
New York New York
Nine Lives Productions
North Manchester GUM Clinic
Northern Wave
North West LGBT Network
North West Regional Assembly (Equality & Leadership Group)
Nua
Oldham PCT
Oldham Pride
Olive Delicatessen
Operation Fundraiser Volunteers
O'Neill Patient Solicitors
One North West
outnorthwest Advertisers
outnorthwest Distribution Outlets
outnorthwest Contributors
Outeverywhere.com
Outlastnight.com
Paddy's Goose
Pankhurst Centre
Pasante
Paul Jones
PCP Ltd
Phoenix Centre for Sexual Health, Oldham
Pink Paper
Pink Parents
PinkSofa.com
Poptastic
Pride Games
Pure Tanning
Purple Chris
Queer
Queerupnorth
Rampton Hospital
Real Manchester.com
Red & Wild
Regional Syphilis Forum
Rembrandt Hotel

Ribblesdale, Bury
Rochdale CVS
Rochdale PCT
Salford City Council
Salford CVS
Salford Library
Salford PCT
Salford University
Sapporo
Schools Out
Sefton CVS
Selfridges
Sigma Research
Sir Ian McKellen
SKV Communications
Slade Cooper
SM Dykes
Smithfield Project
Sparkle
Spirit
Stockport Centre for Health Promotion
Stockport GUM Clinic
Stockport PCT
Stockport Sexual Health Joint Screening Project
Sugar Pops
Superwide Digital
Sure Start
Tameside & Glossop PCT
Taurus
Terrence Higgins Trust
The Birdcage
The Joseph Rowntree Foundation
The Kings Arms (London)
The Lowry
The Outpost
Thompsons Arms
Trade
Trafford PCT
Trannylingus
Tribeca
Turning Point
University Challenge
University College London
University of Central Lancashire
Urban Splash
Uzma Allen
Vanilla
Velvet
Via
Victim Support
View
Village Business Association
Village Manchester Football Club
Village Off Licence
Voluntary Action Manchester
Voluntary Sector North West
West Properties
White Bell Group
Wigan PCT
Wirral MBC

YOU HAVE THE POTENTIAL TO END HOMOPHOBIA

The Lesbian & Gay Foundation
Princess House
105-107 Princess Street
Manchester M1 6DD

Tel: 0161 235 8035
Fax: 0161 235 8036

Registered Charity No. 1070904
Registered Company No. 3476576

