

April 21 2015

Plans of Proposed Bus Stops
New Construction
Salt Lake County

Verified Submission for Bidding

UTA Project Manager

Design Engineer

Design Planner

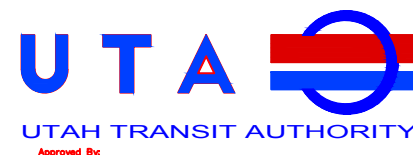
Salt Lake City Engineer

UTA Quality Assurance

Required Items	Approx. Quantities
Concrete Flatwork	5780.5 Square Feet
Stamped Concrete	293 Square Feet
Untreated Base Course	76.05 Cubic Yards
1/2" PEJF	494 Linear Feet
Curb and Gutter	49 Linear Feet
Monolithic Curb	370 Linear Feet
Hand Rails	195.5 Linear Feet
Demo Concrete	526 Square Feet
Demo Gravel	170 Square Feet
Demo Curb and Gutter	49 Linear Feet
Demo Bollards	2 Count
Saw Cuts	2 Count
Stairs	9 Count
Clear and Grub	6093.5 Square Feet
Sod	20 Square Feet
#3 Rebar	29 Count
Boulder Relocation	1 Count
ADA Ramp	45.5 Linear Feet

U.S. Standard Units

Index	
Sheet #	Sheet Name
T-1	Title Sheet
M-1	Map
G-1	General Notes
D-1	Details
1	621 W. 200 S.
2	398 E. 200 S.
3	495 E. 200 S.
4	498 E. 200 S.
5	598 E. 200 S.
6	605 E. 200 S.
7	703 E. 200 S.
8	740 E. 200 S.
9	810 E. 200 S.
10	865 E. 200 S.
11	902 E. 200 S.
12	1004 E. 200 S.
13	1098 E. 200 S.
14	1105 E. 200 S.
15	1275 E. 200 S.
16	1280 E. 200 S.



Designed By
Landon Dixon
Drawn By
Landon Dixon
Checked By
Travis Jones
Approved By
Jacob Splan

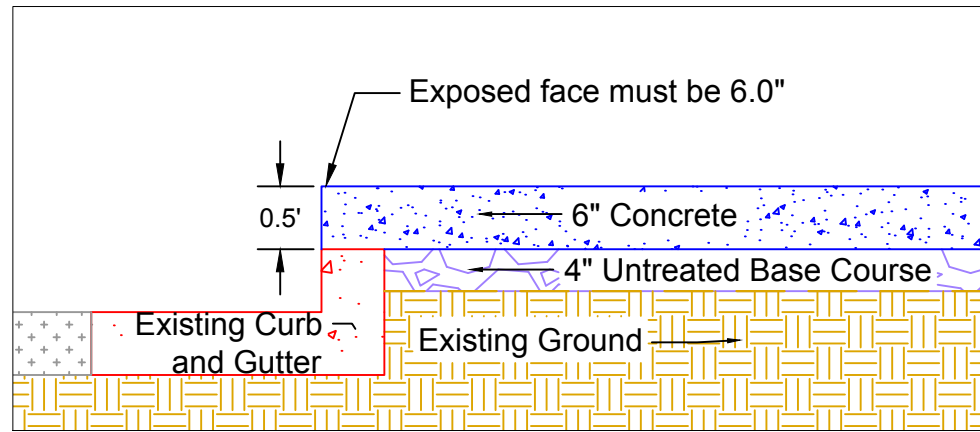


General Notes

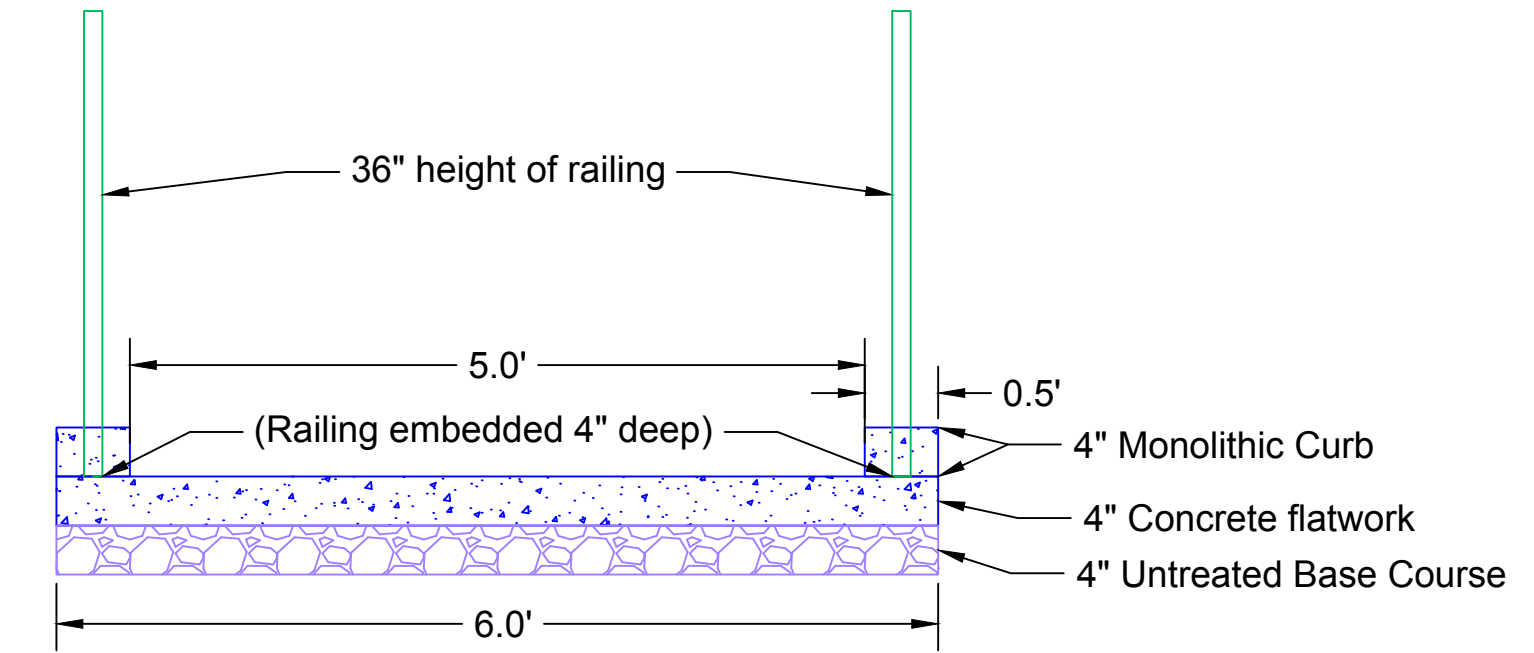
1. All measurements of existing conditions are approximate and shall be verified in field by contractor.
2. Locations of existing utilities are only estimated and are not complete. All utilities shall be blue staked by the contractor prior to beginning of construction.
3. All concrete flatwork shall be less than 2% and drain toward the roadway.
4. All concrete flatwork shall be 4" thick upon 4" of Untreated Base Course (UBC) unless otherwise specified.
5. Where thickness of concrete is prescribed at a different thickness details are provided.
6. Passenger amenities (can and structure) shall be installed by others (NIC)
7. Any landscaping or irrigation that is disturbed during construction shall be replaced in kind by contractor.
8. Proposed concrete flatwork shall match the existing top back of curb or pavement grade.
9. Contractor is responsible to acquire the applicable building and encroachment permits. All other permits necessary to perform this work shall be the responsibility of the contractor.
10. Coordinate final location of bus stop with UTA.
11. Provide full depth $\frac{1}{2}$ " PEJF expansion joint where indicated. Seal the top of the expansion joint with A-2-component, premium-grade, polyurethane-based, elastomeric sealant such as sikaflex-2 C NS EZ mix or approved equal.
12. Protect nearby trees



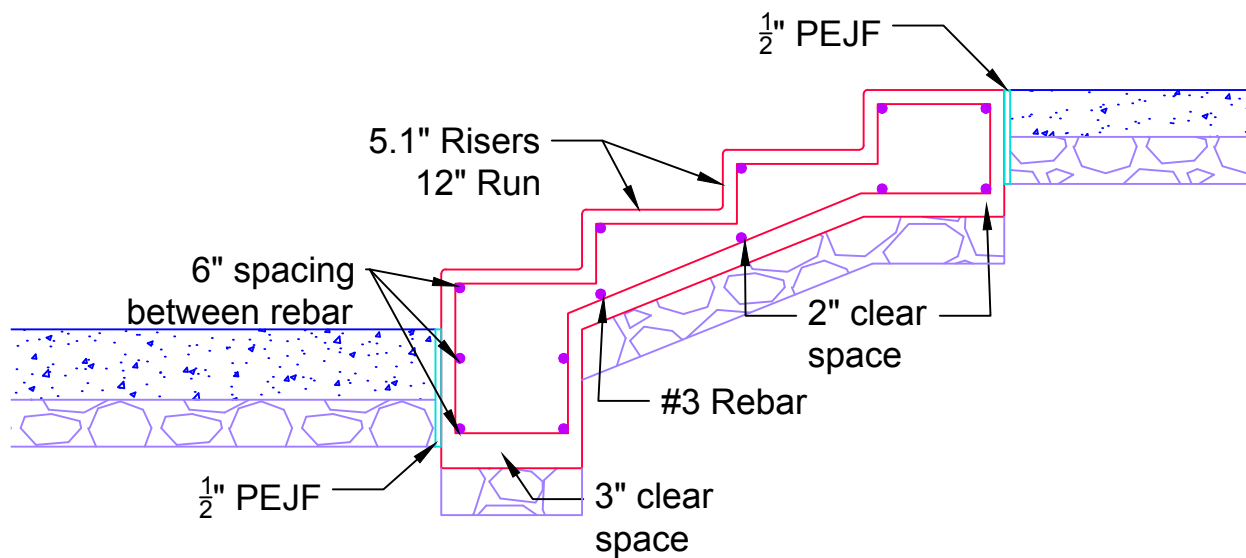
Designed By
Landon Dixon
Drawn By
Landon Dixon
Checked By
Travis Jones
Approved By
Jacob Splan



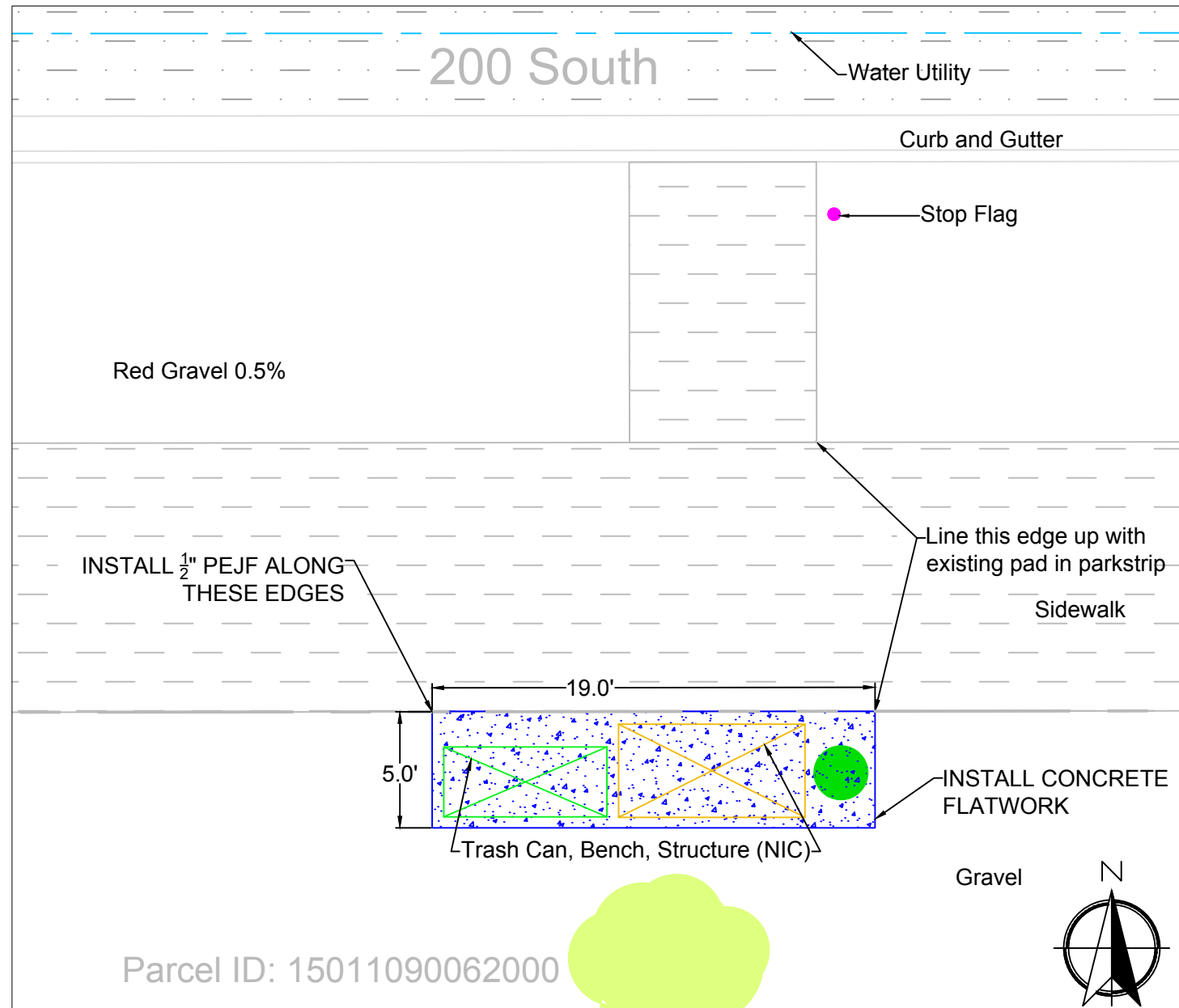
Detail 1 - Raised Curb Face
(applicable only to ramped stops as indicated on plan sheets)



Detail 2 - Ramp and Railing Cross Section



Detail 3 - Stair Detail



Required Item	Approx. Quantities
Install Concrete Flatwork	95 SF
Untreated Base Course	1.17 CY
1/2" PEJF	19 LF
Clear and Grub	200 SF

Notes

- Parcel ID for Adjacent Property owner is 15011090062000
- Begin measurements directly across from the eastern edge of the ADA pad as indicated.
- Protect nearby trees.
- Potential Arsenic and Lead contaminants are present in the soil. Soil shall be broken and a sample shall be provided to UTA8. so a study can be performed to determine extent of contamination. One week notice shall be provided to UTA prior to breaking ground so the study can be executed promptly to aid in fluid construction.
- The soil shall be assumed contaminated during construction and dust control shall be implemented to avoid accidental ingestion.
- Soil must remain onsite at this location
- A section of gravel and stone shall be peeled back and the excavated dirt (native soil from the construction site) shall be distributed across the existing soil and then covered with the stone and gravel. All loose gravel and stone removed from the construction footprint shall be placed on top of the redistributed native soil mentioned in Note 7.



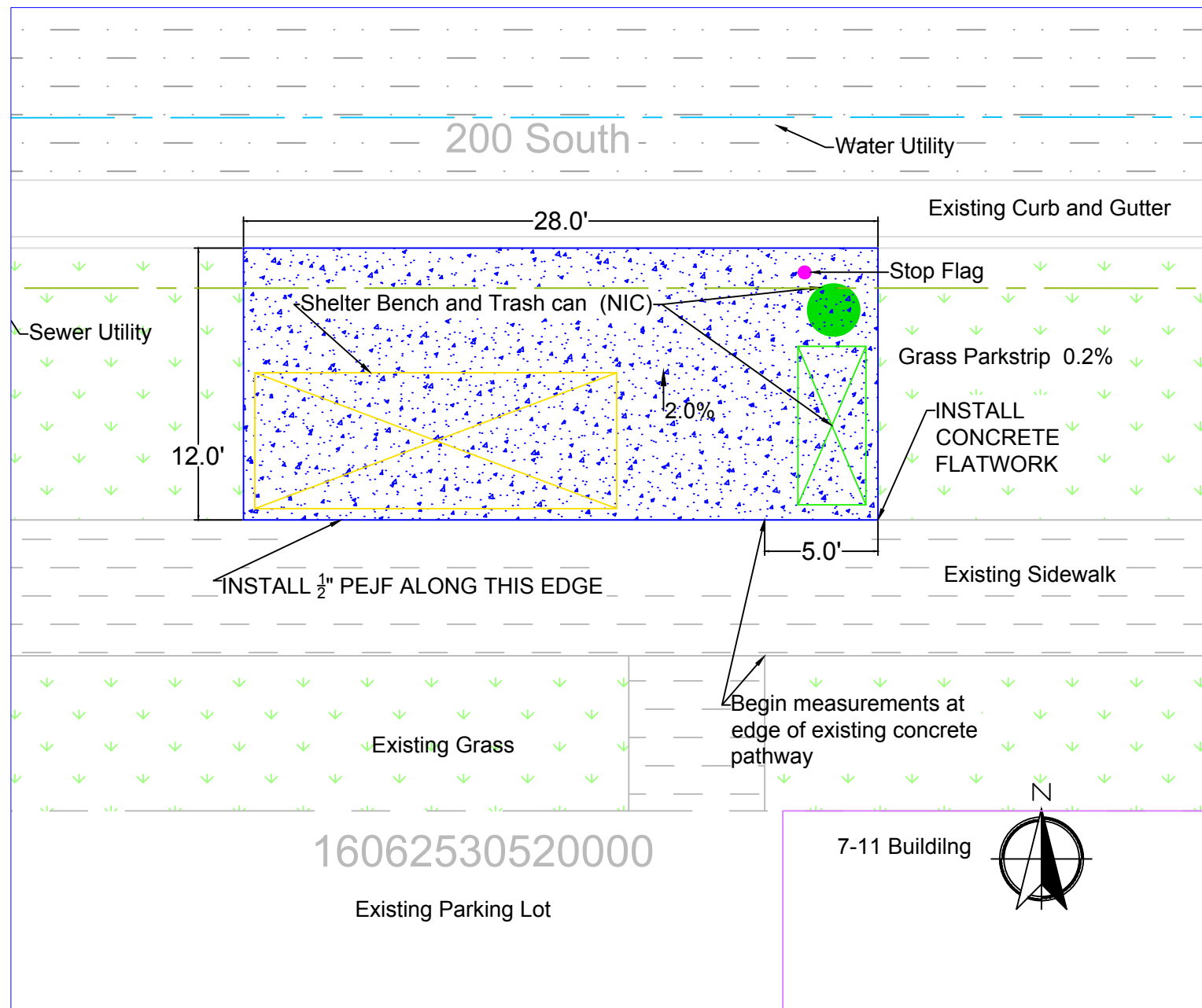
REV	DATE	DESCRIPTION	REV	DATE	DESCRIPTION



Designed By: Landon Dixon
 Drawn By: Landon Dixon
 Checked By: Travis Jones
 Approved By: Jacob Splan

621 W. 200 S. Salt Lake City
 Stop ID: 198274

Scale: 0.15	
GDD Filename: 621 W 200 S.dwg	
Submit Date: April 21, 2015	
UTA Contract No.:	
Drawing No. 1	Sheet No. 1



Construction Notes

1. Parcel ID for Adjacent 7-11 is 16062530520000
2. Begin measurements directly across from the Eastern edge of the concrete sidewalk adjacent to 7-11 as indicated.



Required Item	Approx. Quantities
Install Concrete Flatwork	336 SF
Untreated Base Course	4.15CY
1/2" PEJF	28 LF
Clear and Grub	336 SF

Ridership
62 Boardings
42 Alightings

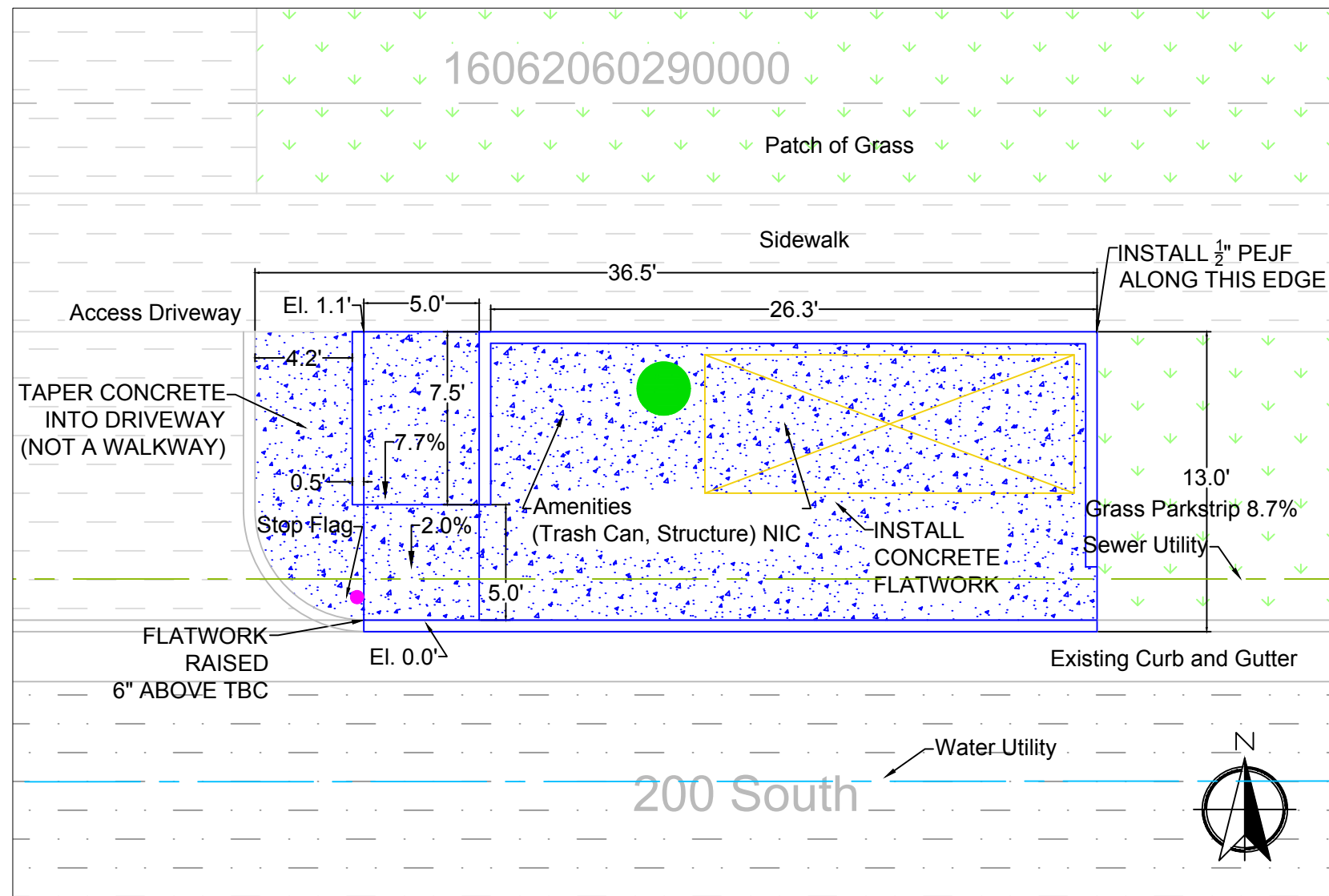
REV	DATE	DESCRIPTION	REV	DATE	DESCRIPTION



Designed By: Landon Dixon
 Drawn By: Landon Dixon
 Checked By: Travis Jones
 Approved By: Jacob Splan

398 E. 200 S. Salt Lake City
 Stop ID: 126366

Scale	Sheet No.
0.15	2
<small> GDD File Name: 398 E 200 S.dwg Submitted Date: April 21 2015 UTA Contract No.: Drawing No.: 1 </small>	

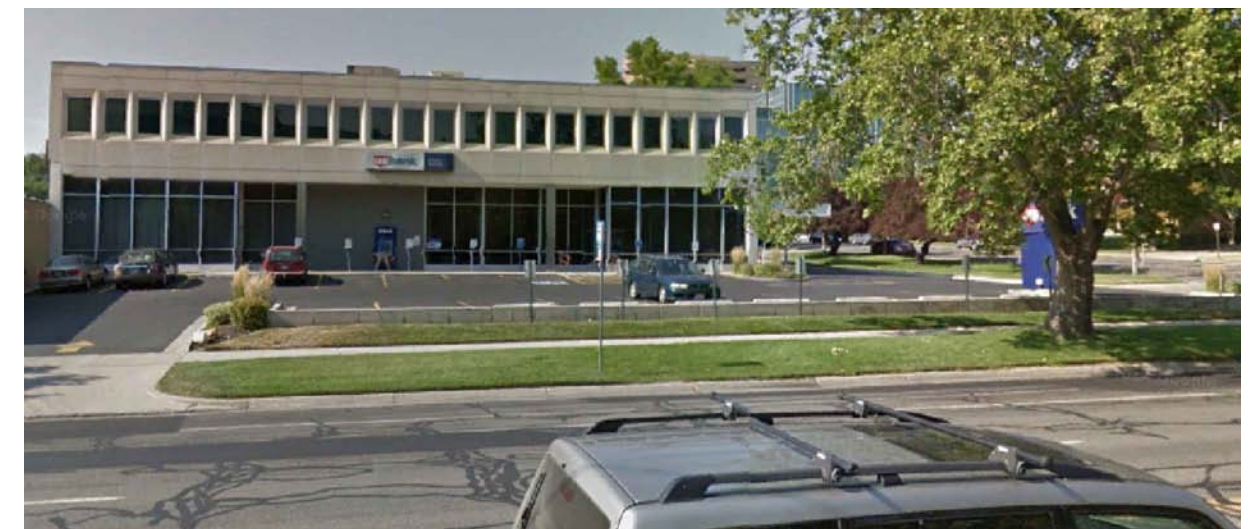


Construction Notes

1. Parcel ID for Adjacent Property owner is 16062060290000
2. ADA compliant Railing shall be implemented on **both** sides of the ramp. Railing shall be cored into the the monolithic curb to a depth of 4".
3. The ADA ramp shall be approximately 7.7% along the proposed 7.5 feet. Field fitting is acceptable as long as the slope is consistent and does not exceed 8.0%.
4. Extend the concrete flatwork over the curb to match the face of the existing curb. This new layer of concrete should add 6 inches to the height of the curb. (See Detail 1) This is intended to raise the entire level of the platform 6 inches so the ramp can be an acceptable level.
5. A yellow line shall be painted along the edge facing the street.
6. Begin measurements at point of curvature along curb.

Required Item	Approx. Quantities
Install Concrete Flatwork	467 SF
Untreated Base Course	5.77 CY
1/2" PEJF	36.5 LF
ADA Ramp	7.5 LF
Monolithic Curb	55 LF
Hand Rails	15 LF
Clear and Grub	467 SF

Ridership
44 Boardings
88 Alightings



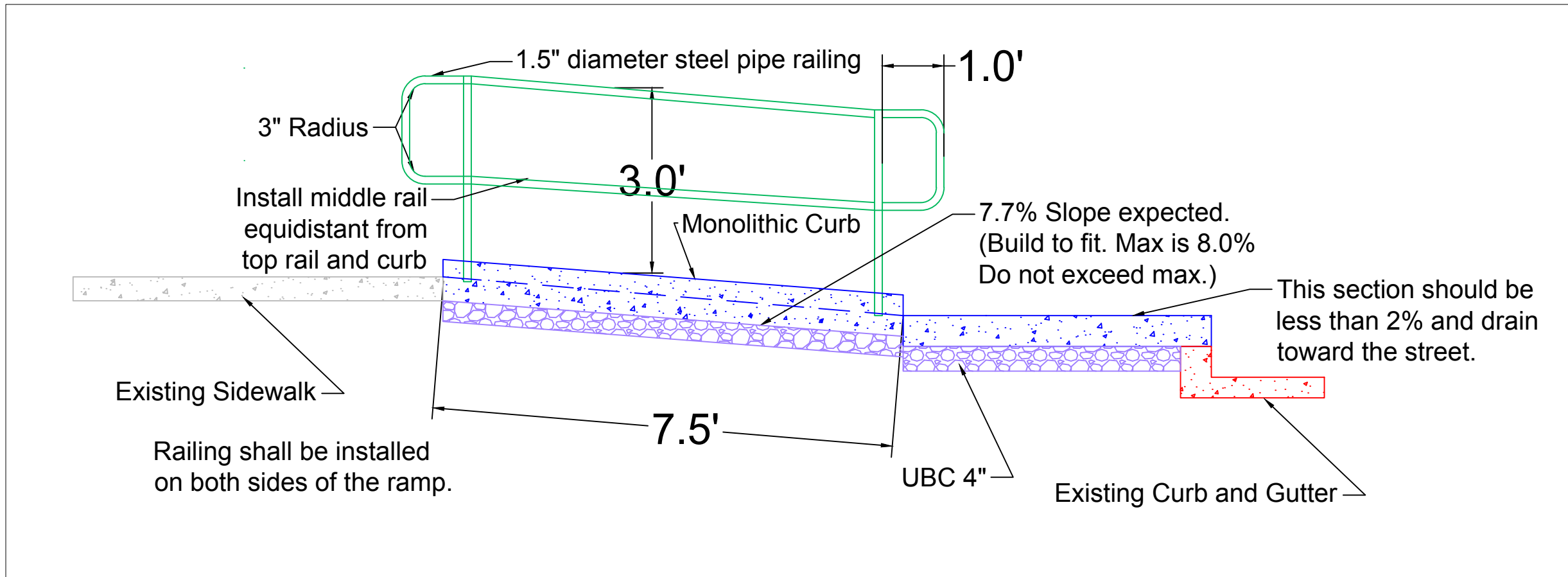
REV	DATE	DESCRIPTION	REV	DATE	DESCRIPTION



Designed By:
Landon Dixon
Drawn By:
Landon Dixon
Checked By:
Travis Jones
Approved By:
Jacob Splan

495 E. 200 S. Salt Lake City
Stop ID: 126256

Scale:	0.15
GDG Filename:	495 E 200 S.dwg
Submitted Date:	April 21 2015
UTA Contract No.:	
Drawing No.:	1
Sheet No.:	3



REV	DATE	DESCRIPTION	REV	DATE	DESCRIPTION



Designed By:
Landon Dixon

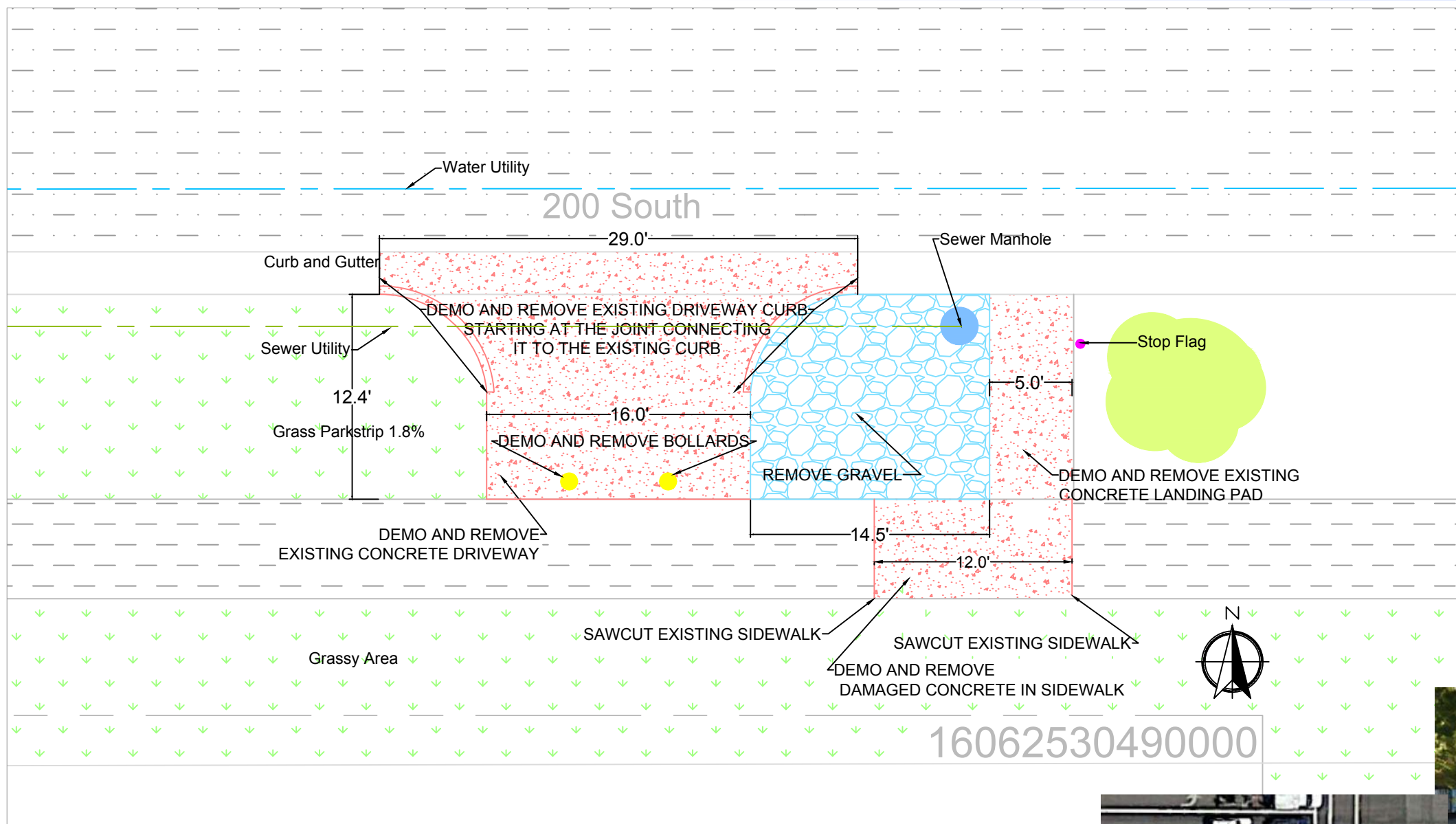
Drawn By:
Landon Dixon

Checked By:
Travis Jones

Approved By:
Jacob Splan

495 E. 200 S. Salt Lake City
Stop ID: 126256

Scale: 1:5	Sheet No.:
GDD Filename: 495 Ramp Profile Detail.dwg	1
Submitted Date: April 21 2015	3-a
UTA Contract No.:	

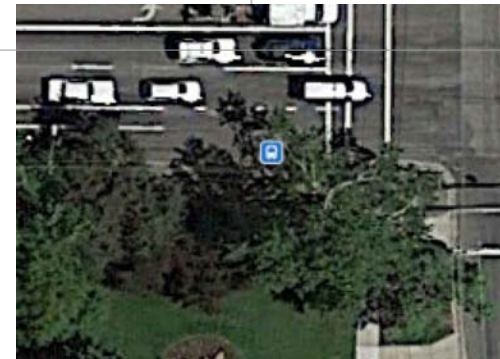


Demolition Notes

1. Parcel ID for Adjacent Office building is 16062530490000
2. Saw cut sidewalk as indicated and prepare site for sidewalk construction
3. Protect Sewer manhole and Sewer Line
4. Protect all nearby trees.
5. Protect no parking sign in adjacent grass .
6. Protect curb that is not scheduled for demolition
7. Demo and remove garbage can
8. Demo and remove existing driveway and bollards including curved curb and gutter adjacent to driveway.
9. Protect roadway asphalt during curb and gutter demolition.

16062530490000

Required Item	Approx. Quantity
Demo Concrete	351 SF
Demo Gravel	170 SF
Demo Bollards	2 CT
Demo Curb and Gutter	29 LF
Sawcuts	2 CT
Clear and Grub	600 SF

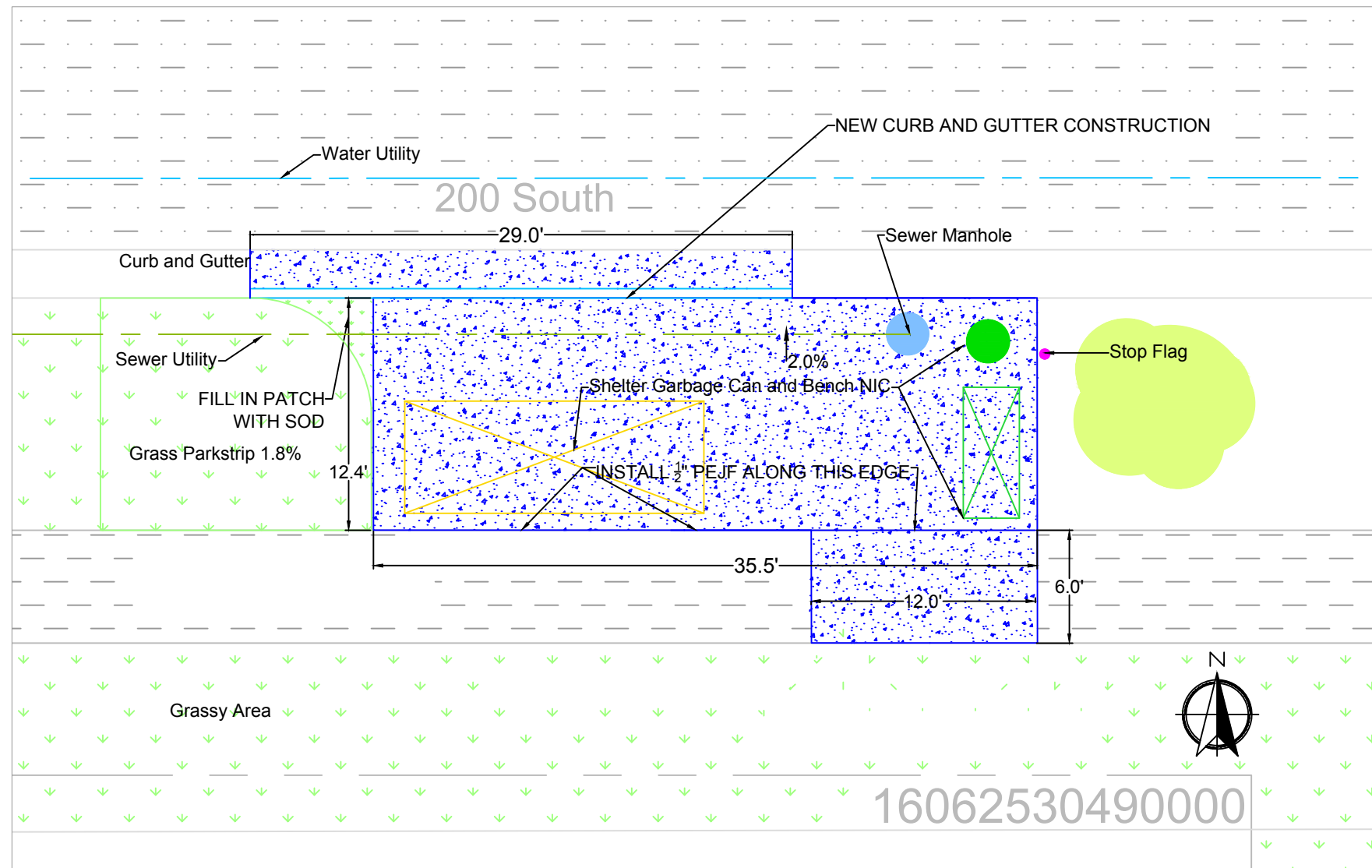




Designed By:
Landon Dixon
Drawn By:
Landon Dixon
Checked By:
Travis Jones
Approved By:
Jacob Splan

498 E. 200 S. Salt Lake City
Stop ID: 126063
Demolition

Scale:	0.125
GDG File Name:	498 E 200 S.dwg
Submitted Date:	April 21 2015
UTA Contract No.:	
Drawing No.:	1
Sheet No.:	4-a

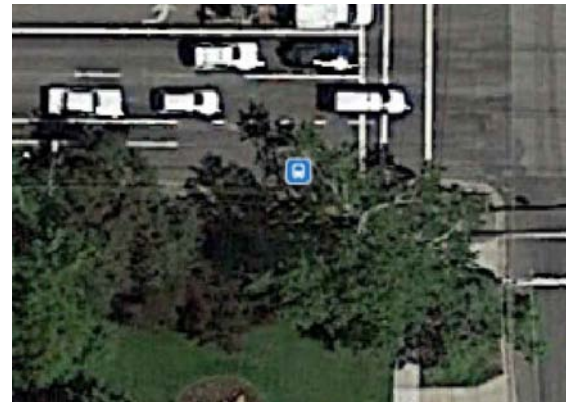


Construction Notes

1. Parcel ID for Adjacent Office building is 16062530490000
2. Protect Sewer Manhole and ensure that the surrounding concrete does not impede it's opening.
3. Fill in Sod to make the western edge of the concrete flush with grass.
4. Use Sod removed from other bus stops along the corridor.
5. Protect nearby trees
6. Match sidewalk to surrounding sidewalk.
7. Match constructed curb and gutter according to existing curb and gutter.

Required Item	Approx. Quantities
Install Concrete Flatwork	512 SF
Untreated Base Course	7.4 CY
½" PEJF	35.5 LF
Sod	20 SF
Curb and gutter	29 LF

Ridership
101 Boardings
48 Alightings



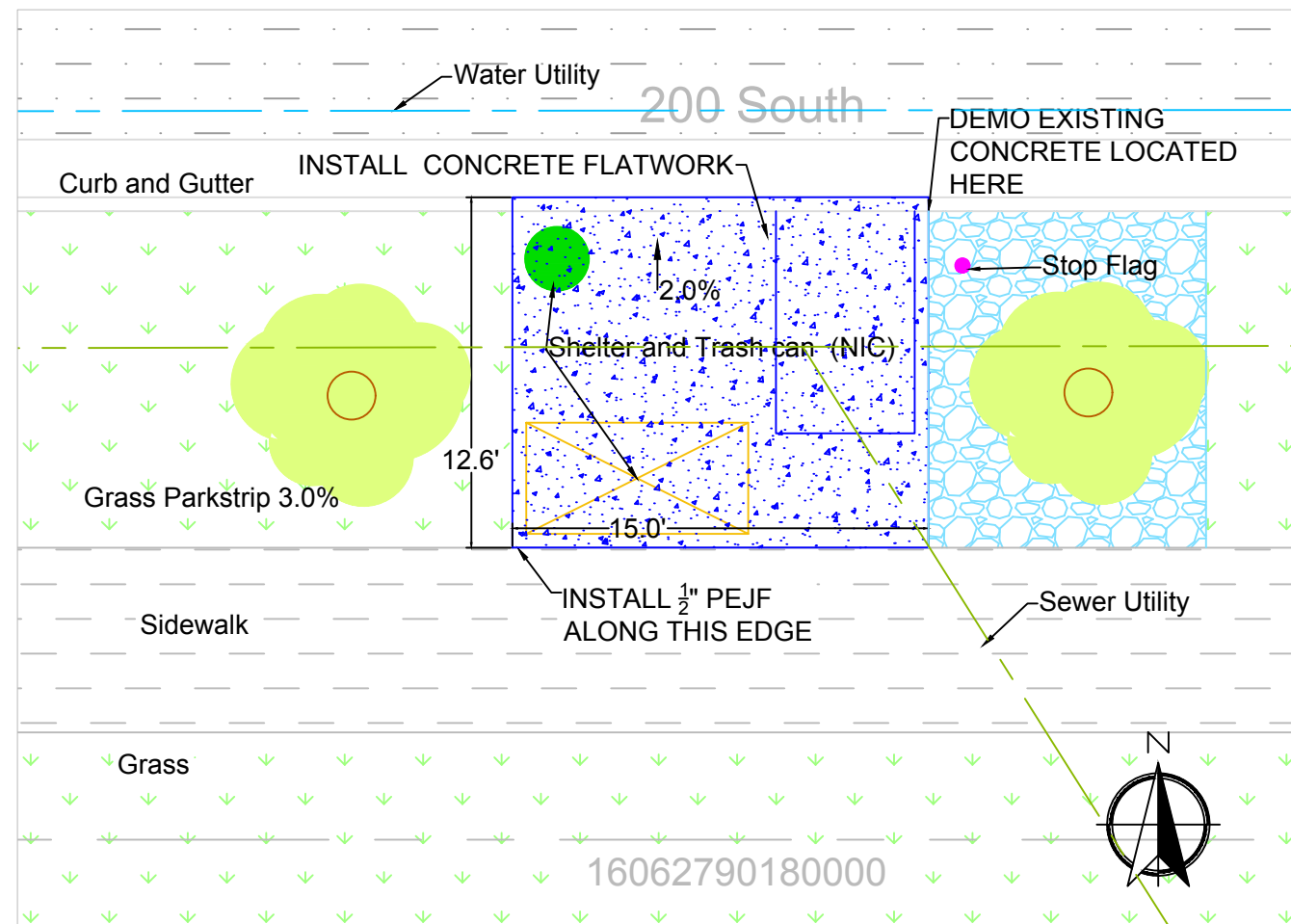
REV	DATE	DESCRIPTION	REV	DATE	DESCRIPTION



Designed By: Landon Dixon
 Drawn By: Landon Dixon
 Checked By: Travis Jones
 Approved By: Jacob Splan

498 E. 200 S. Salt Lake City
 Stop ID: 126063
 Construction

Scale: 0.125	
CDD Filename: 498 E 200 S.dwg	
Submittal Date: April 21 2015	
UTA Contract No:	
Drawing No: 1	Sheet No: 4-b



Notes

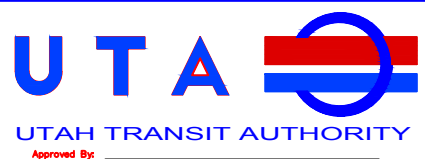
1. Parcel ID for Adjacent Office building is 16062790180000
2. Any Gravel removed from site shall be dispersed in adjacent patch of gravel around the tree directly east of construction site.
3. Protect all nearby trees and signs.
4. Demo existing landing zone. (Concrete in the Parkstrip)
5. Protect signs
6. Contact Urban Forester and coordinate construction to a time when Forester can be on sight to supervise construction
7. If a three inch root is encountered splicing must occur under the supervision and instruction of the Urban Forester.
8. All Flatwork shall be less than 2.0% draining toward the street.
9. Demo existing concrete and begin construction where the concrete had previously been located.
10. Extend the concrete flatwork over the curb to match the face of the existing curb. This new layer of concrete should add 4 inches to the height of the curb. (See Detail on pg 5-a) This is intended to raise the entire level of the platform a ramp is not required
11. A yellow line shall be painted along the edge facing the street.

Required Item	Approx. Quantities
Install Concrete Flatwork	189 SF
Untreated Base Course	2.3 CY
1/2" PEJF	15 LF
Demo Existing Concrete	63 SF
Clear and Grub	189 SF

Ridership
43 Boardings
25 Alightings



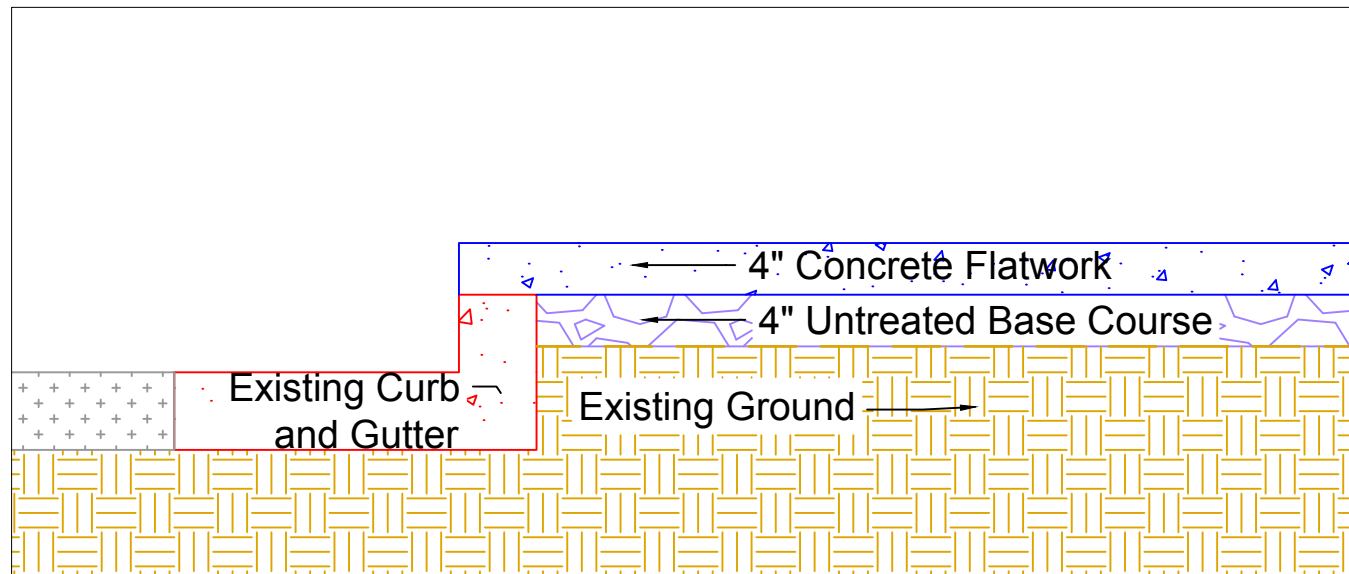
REV	DATE	DESCRIPTION	REV	DATE	DESCRIPTION



Designed By: Landon Dixon
 Drawn By: Landon Dixon
 Checked By: Travis Jones
 Approved By: Jacob Splan

598 E. 200 S. Salt Lake City
 Stop ID: 126368

Scale: 0.15	
GDD Filename: 598 E 200 S.dwg	
Submital Date: April 21 2015	
UTA Contract No:	
Drawing No: 1	Sheet No: 5



Modified Raised Curb Face.
 Curb face can be field fit to provide 2% Flatwork that drains toward roadway. 4" expected.

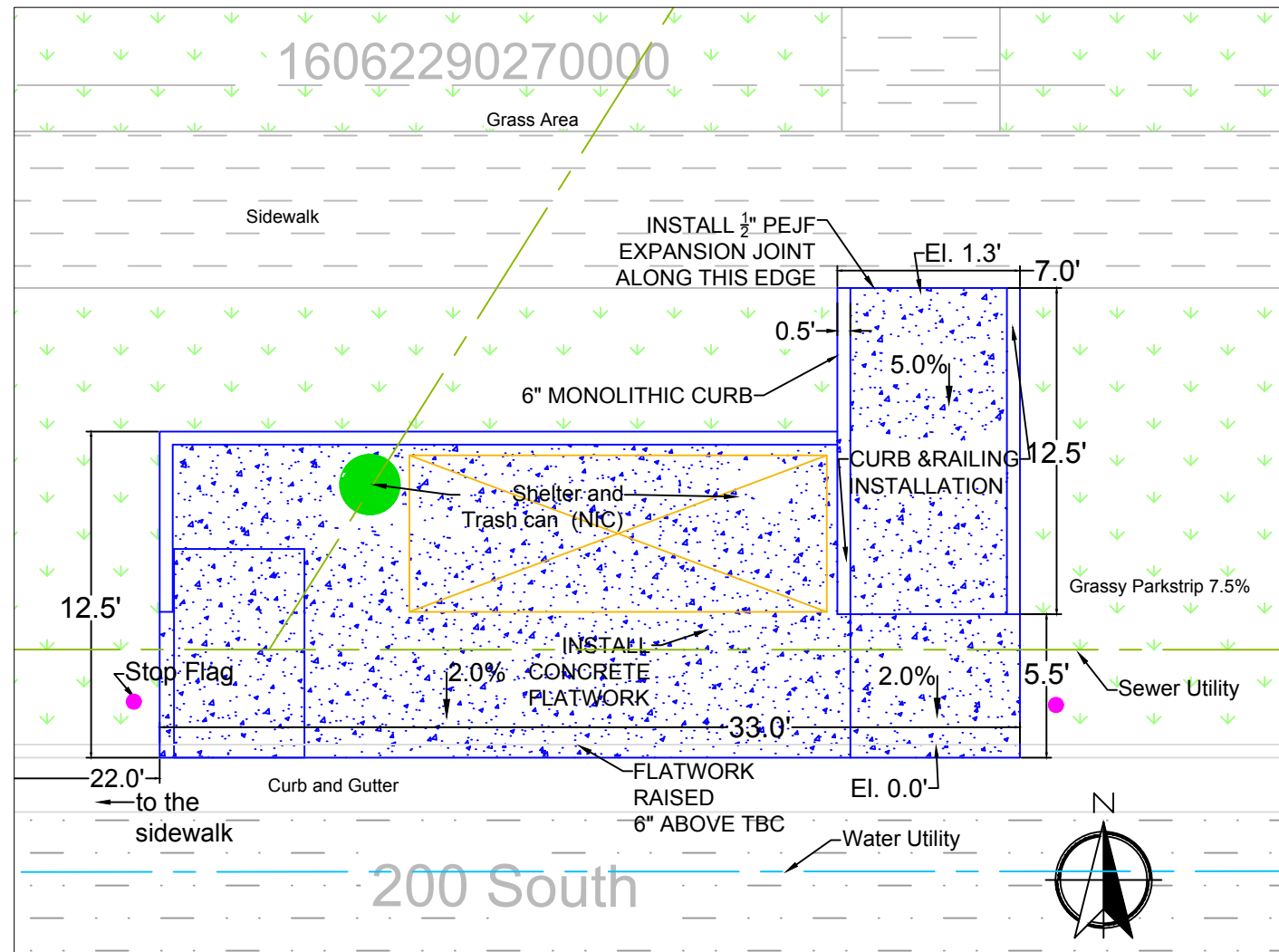
REV	DATE	DESCRIPTION	REV	DATE	DESCRIPTION



Designed By:
Landon Dixon
 Drawn By:
Landon Dixon
 Checked By:
Travis Jones
 Approved By:
Jacob Splan

598 E. 200 S. Salt Lake City
 Stop ID: 126368

Scale:
1
 GDD Filename:
598 E 200 S.dwg
 Submittal Date:
April 21 2015
 UTA Contract No.:
 Drawing No.: 1
 Sheet No.: 5-a



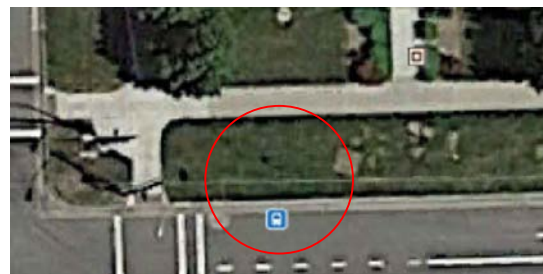
Notes

1. Parcel ID for Adjacent Property owner is 16062290270000
2. ADA compliant Railing shall be implemented on **both** sides of the ramp. Railing shall be cored into the the monolithic curb to a depth of 4"
3. The ADA ramp shall be approximately 5.0% along the proposed 12.5 feet. Field fitting is acceptable as long as the slope is consistent and does not exceed 8.0%.
4. Extend the concrete flatwork over the curb to match the face of the existing curb. This new layer of concrete should add 6 inches to the height of the curb. (See Detail 1 on page D-1) This is intended to raise the entire level of the platform 6 inches so the ramp can be an acceptable level.
5. A yellow line shall be painted along the edge facing the street.
6. Begin measurements on southeast corner 25 feet away from the nearest north to south running sidewalk at the intersection.

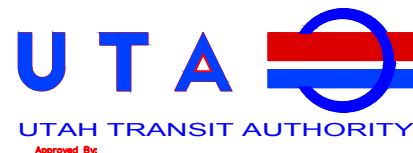


Required Item	Approx. Quantities
Install Concrete Flatwork	450 SF
Untreated Base Course	5.6 CY
1/2" PEJF	7 LF
ADA Ramp	12.5 SF
Monolithic Curb	63.5 LF
Hand Rails	25 LF
Clear and Grub	450 SF

Ridership
18 Boardings
32 Alightings



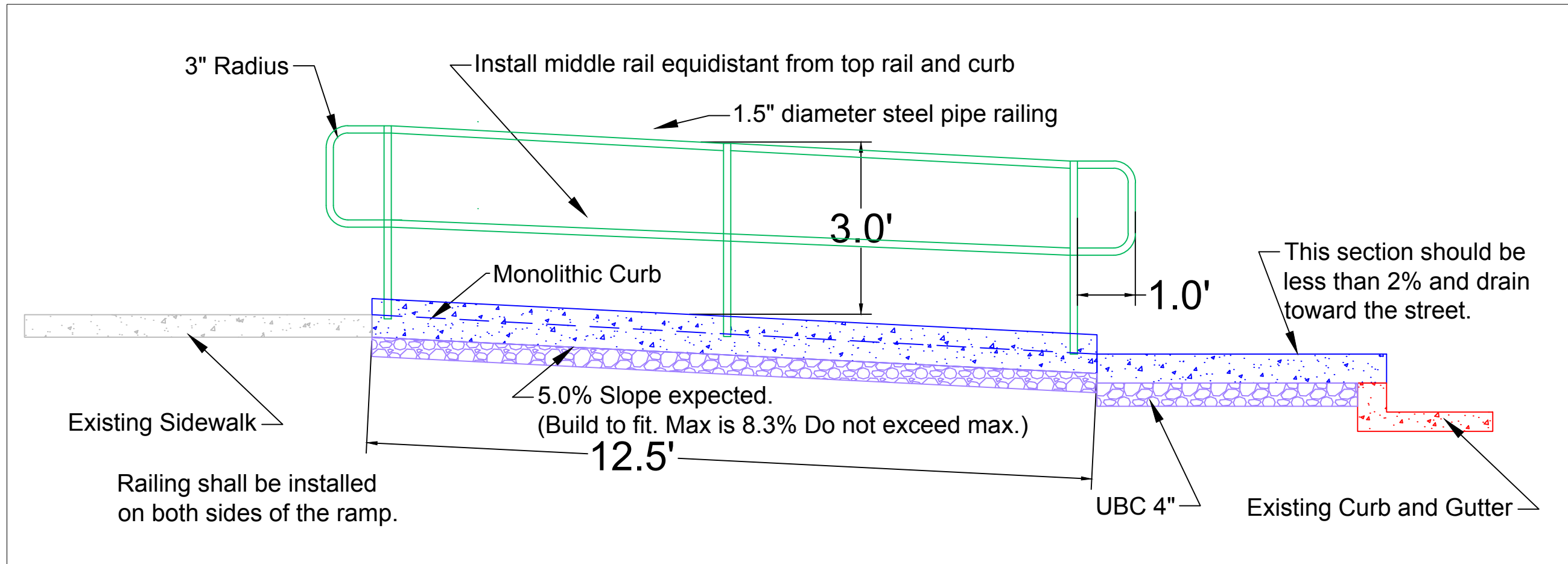
REV	DATE	DESCRIPTION	REV	DATE	DESCRIPTION



Designed By:
Landon Dixon
Drawn By:
Landon Dixon
Checked By:
Travis Jones
Approved By:
Jacob Splan

605 E. 200 S. Salt Lake City
Stop ID:126077

Scale:	0.15
GDG Filename:	605 E 200 S.dwg
Submitted Date:	April 21 2015
UTA Contract No.:	
Drawing No.:	1
Sheet No.:	6



REV	DATE	DESCRIPTION	REV	DATE	DESCRIPTION



Designed By:
Landon Dixon

Drawn By:
Landon Dixon

Checked By:
Travis Jones

Approved By:
Jacob Splan

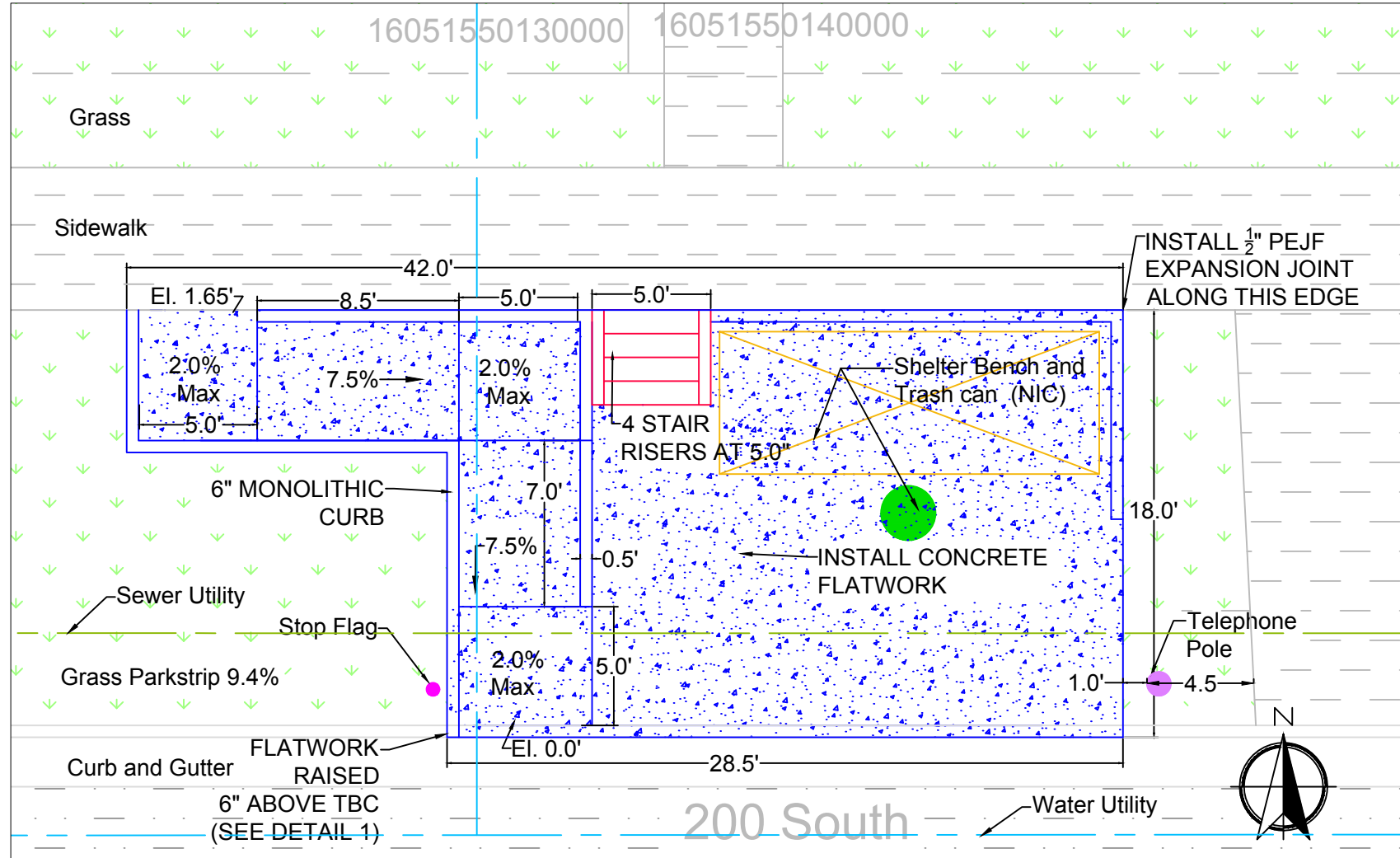
Scale:
1:5

GDD Filename:
605 Ramp Profile Detail.dwg

Submitted Date:
April 21 2015

UTA Contract No.:

Drawing No. 1
Sheet No. 6-a



Notes

1. Relocate bike rack in adjacent western lawn
2. Parcel IDs for Adjacent Property owner are 16051550130000 and 16051550140000
3. ADA compliant Railing shall be implemented on **both** sides of the ramp. Railing shall be cored into the the monolithic curb to a depth of 4"
4. The ADA ramp shall be approximately 7.5% along the proposed ramp. Field fitting is acceptable as long as the slope is consistent and does not exceed 8.0%.
5. Extend the concrete flatwork over the curb to match the face of the existing curb. This new layer of concrete should add 6 inches to the height of the curb. (See Detail 1) This is intended to raise the entire level of the platform 6 inches so the ramp can be an acceptable level.
6. A yellow line shall be painted along the edge facing the street.
7. Protect nearby telephone pole
8. Install Stairs with 5.1" Risers and 12" Runs with #3 rebar installed as indicated on Detail 3 with handrails on either side cored to a depth of 4"

Required Item	Approx. Quantities
Install Concrete Flatwork	594 SF
Untreated Base Course	7.3 CY
1/2" PEJF	42 LF
ADA Ramp	15.5 SF
Monolithic Curb	101 LF
Hand Rails	61.5 LF
Clear and Grub	594 SF
Stairs	4 CT
#3 Rebar	13 CT

Ridership
19 Boardings
35 Alightings



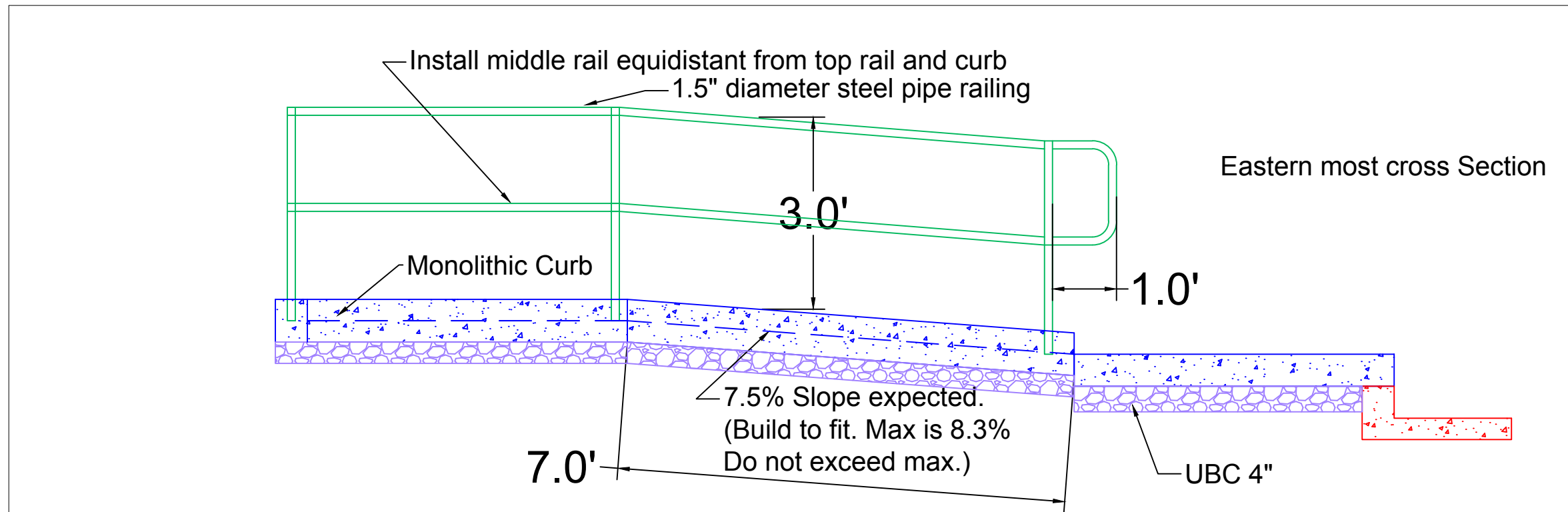
REV	DATE	DESCRIPTION	REV	DATE	DESCRIPTION



Designed By: Landon Dixon
 Drawn By: Landon Dixon
 Checked By: Travis Jones
 Approved By: Jacob Splan

703 E. 200 S. Salt Lake City
 Stop ID: 126067

Scale: 0.15	
GDG Filename: 703 E 200 S.dwg	
Submitted Date: April 21 2015	
UTA Contract No.:	
Drawing No. 1	Sheet No. 7



REV	DATE	Description	REV	DATE	Description



Designed By:
Landon Dixon

Drawn By:
Landon Dixon

Checked By:
Travis Jones

Approved By:
Jacob Splan

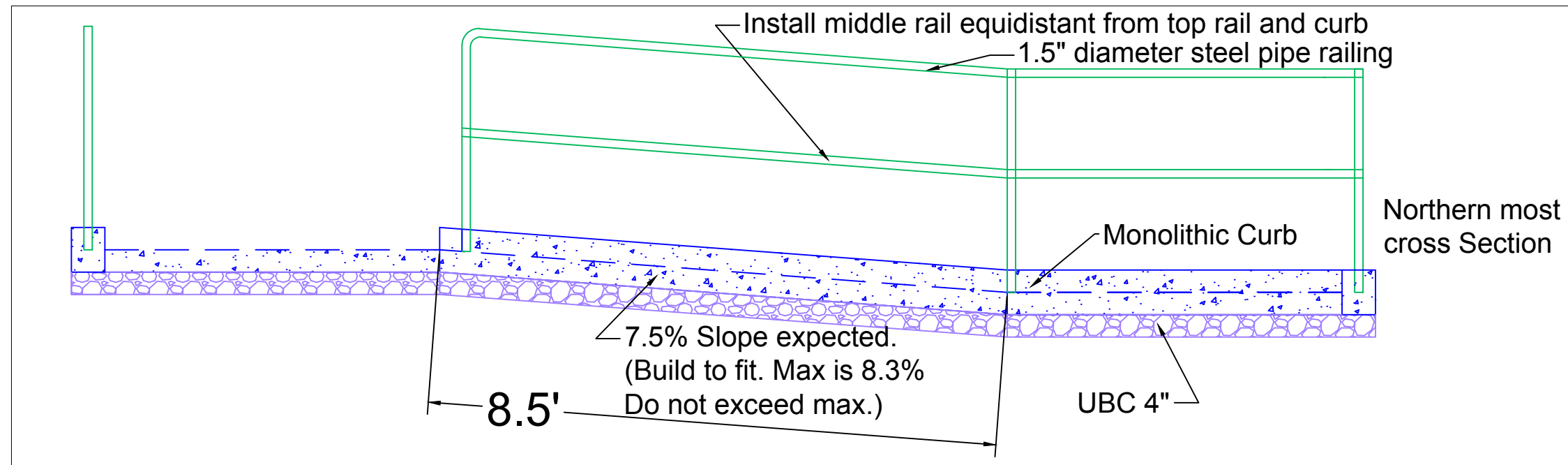
Scale:
1:5

GDG Filename:
703 Ramp Profile Detail.dwg

Submitted Date:
April 21 2015

UTA Contract No.:

Drawing No. 1 Sheet No. 7-a



REV	DATE	DESCRIPTION	REV	DATE	DESCRIPTION



Designed By:
Landon Dixon

Drawn By:
Landon Dixon

Checked By:
Travis Jones

Approved By:
Jacob Splan

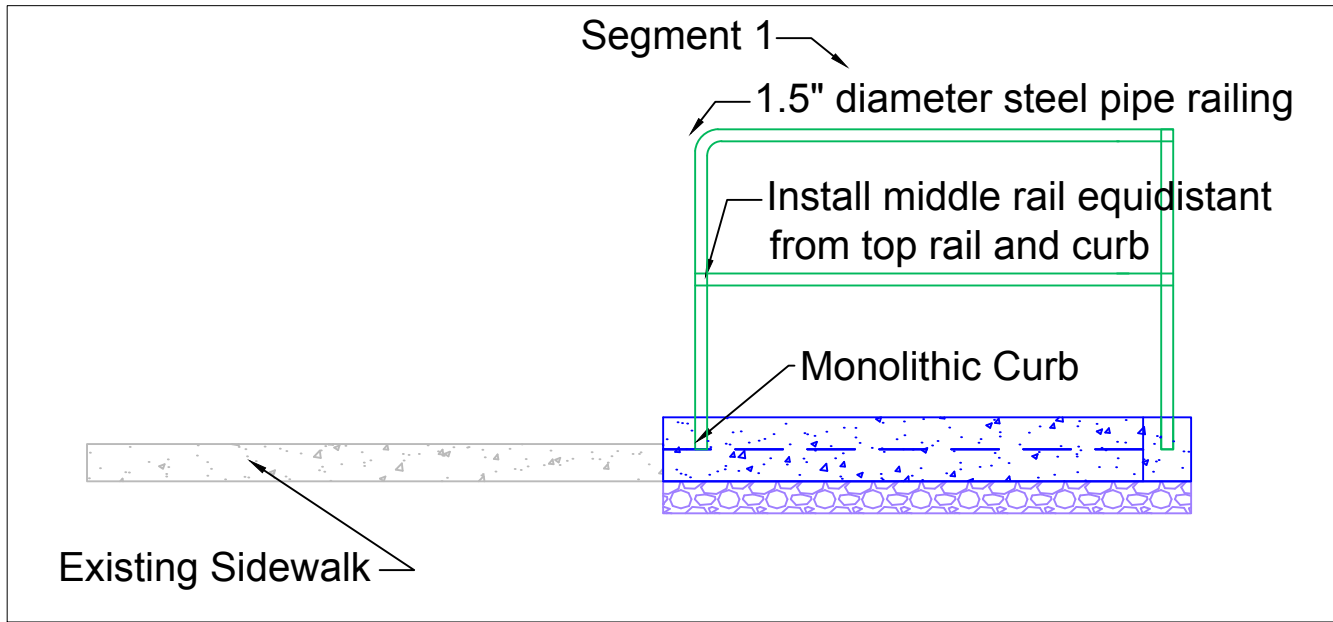
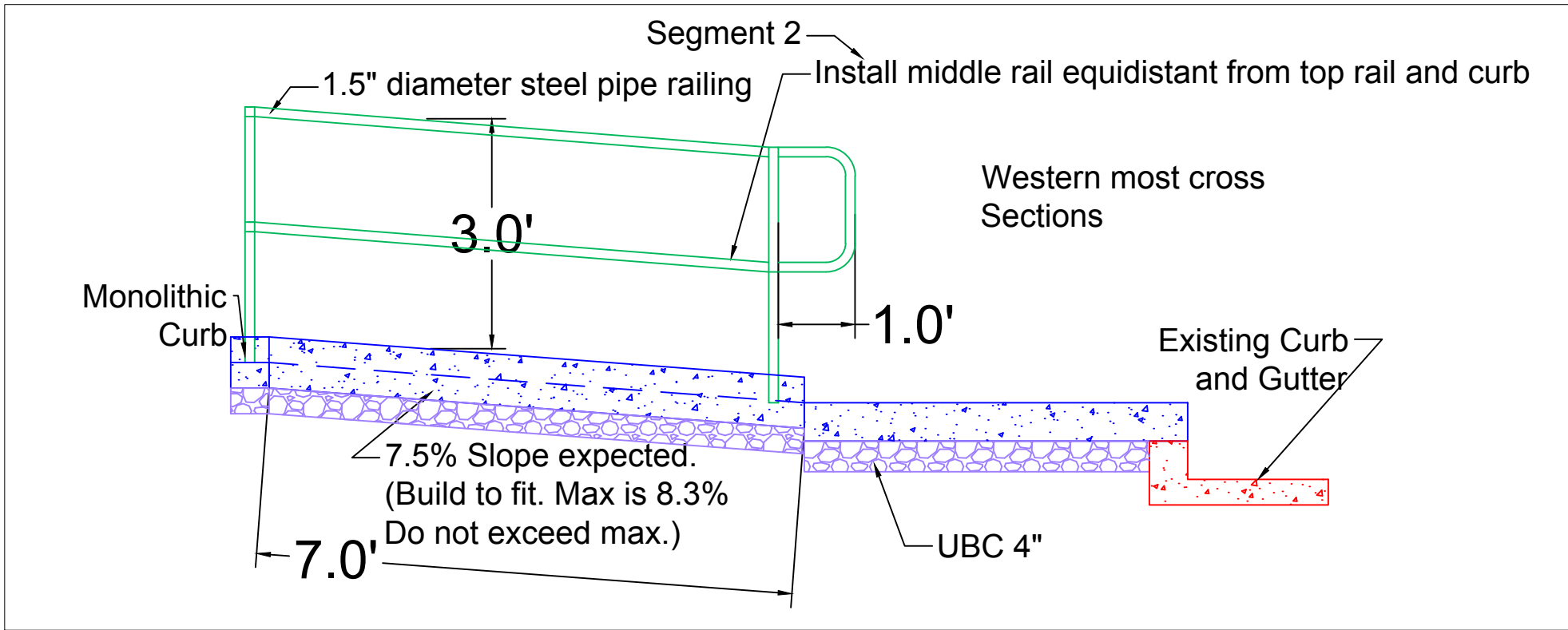
Scale:
1:5

GDD Filename:
703 Ramp Profile Detail.dwg

Submitted Date:
April 21 2015

UTA Contract No.:

Drawing No. 1 Sheet No. 7-b

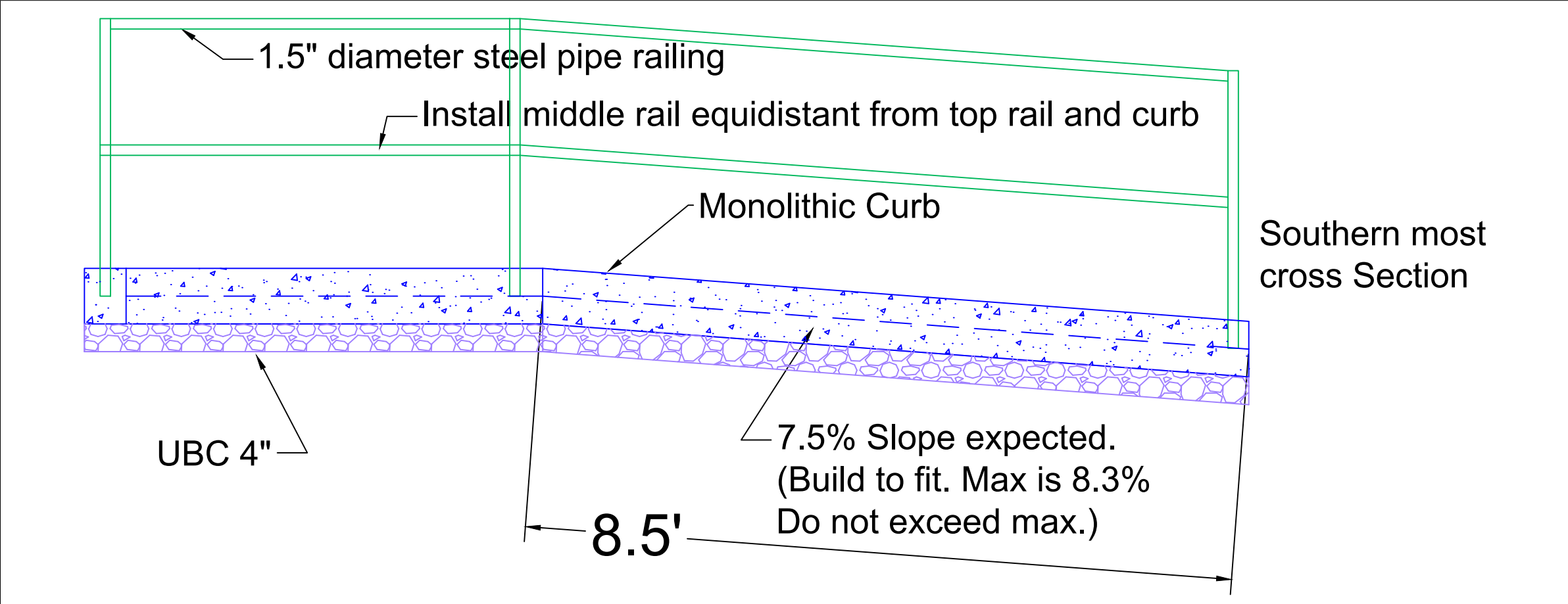


REV	DATE	DESCRIPTION	REV	DATE	DESCRIPTION



Designed By:
 Landon Dixon
 Drawn By:
 Landon Dixon
 Checked By:
 Travis Jones
 Approved By:
 Jacob Splan

Scale:
 1:5
 GDD Filename:
 703 Ramp Profile Detail.dwg
 Submitted Date:
 April 21 2015
 UTA Contract No.:
 Drawing No.: 1
 Sheet No.: 7-c



REV	DATE	DESCRIPTION	REV	DATE	DESCRIPTION



Designed By:
Landon Dixon

Drawn By:
Landon Dixon

Checked By:
Travis Jones

Approved By:
Jacob Splan

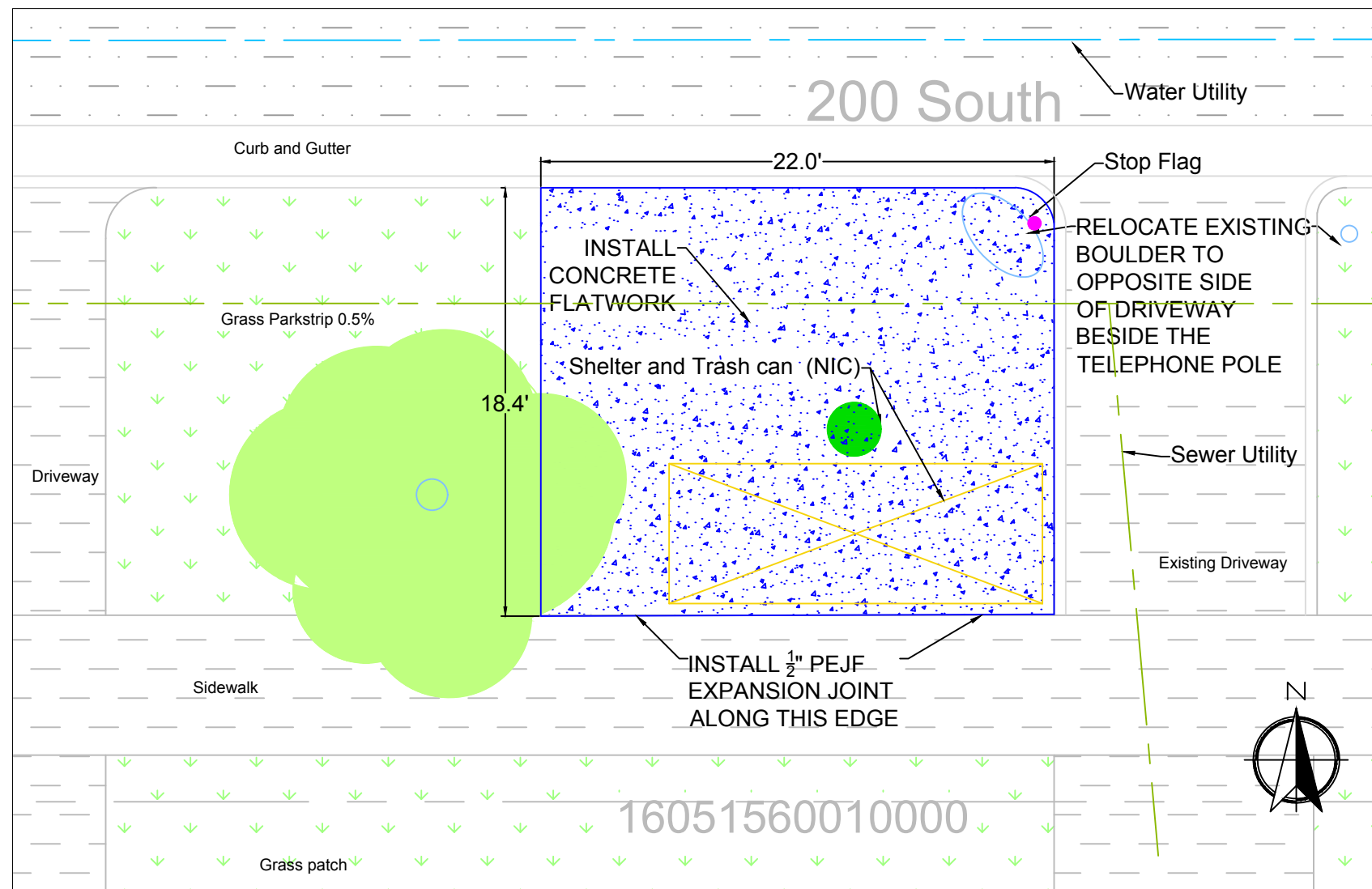
Scale:
1:5

GDQ Filename:
703 Ramp Profile Detail.dwg

Submitted Date:
April 21 2015

UTA Contract No.:

Drawing No. 1 Sheet No. 7-d



Notes

1. Parcel ID for Adjacent Property owner is 16051560010000
2. Remove and relocate boulder to other side of driveway near the telephone pole.
3. Contact Urban Forester and coordinate construction to a time when Forester can be on sight to supervise construction
4. If a three inch root is encountered splicing must occur under the supervision and instruction of the Urban Forester.



Required Item	Approx. Quantities
Install Concrete Flatwork	404.5 SF
Untreated Base Course	5.0 CY
1/2" PEJF	22 LF
Clear and Grub	404.5 SF
Relocate Boulder	1 CT

Ridership
54 Boardings
21 Alightings

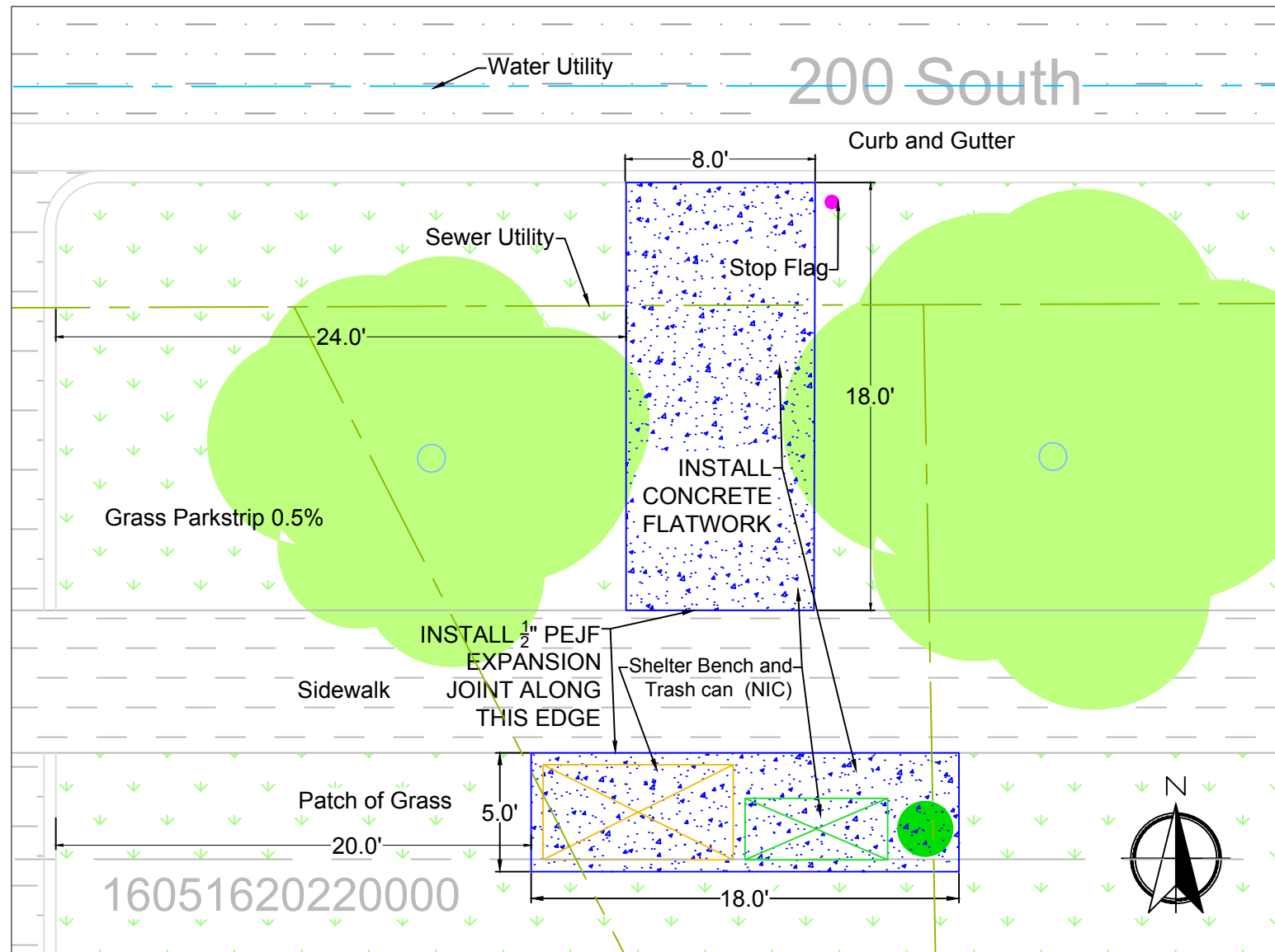
REV	DATE	DESCRIPTION	REV	DATE	DESCRIPTION



Designed By: Landon Dixon
 Drawn By: Landon Dixon
 Checked By: Travis Jones
 Approved By: Jacob Splan

740 E. 200 S. Salt Lake City
 Stop ID: 126065

Scale: 0.15	
GDG Filename: 740 E 200 S.dwg	
Submitted Date: April 21 2015	
UTA Contract No.:	
Drawing No. 1	Sheet No. 8

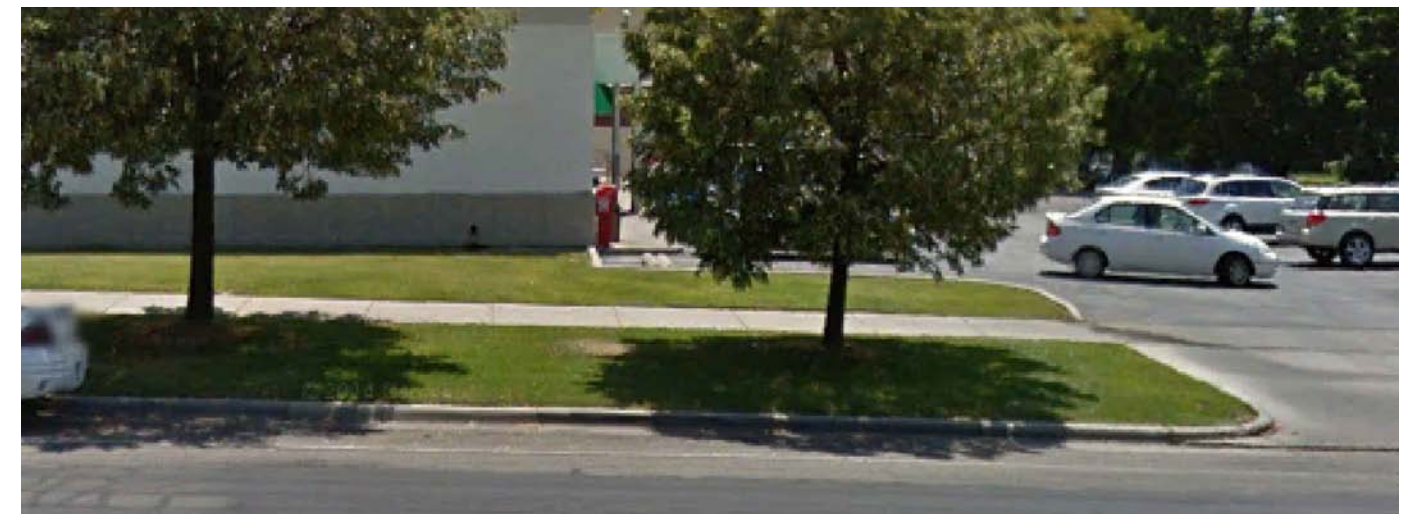


Notes

1. Parcel ID for Adjacent Property owner is 16051620220000
2. Begin measurements 24 feet from the edge of the driveway of the Dollar Tree.
3. Pad for the Shelter Bench and Trash Can shall be placed 20 feet from the edge of the driveway of the Dollar Tree
4. Contact Urban Forester and coordinate construction to a time when Forester can be on sight to supervise construction.
5. If a three inch root is encountered splicing must occur under the supervision and instruction of the Urban Forester.

Ridership
37 Boardings
63 Alightings

Required Item	Approx. Quantities
Install Concrete Flatwork	234 SF
Untreated Base Course	2.9 CY
1/2" PEJF	26 LF
Clear and Grub	234 SF



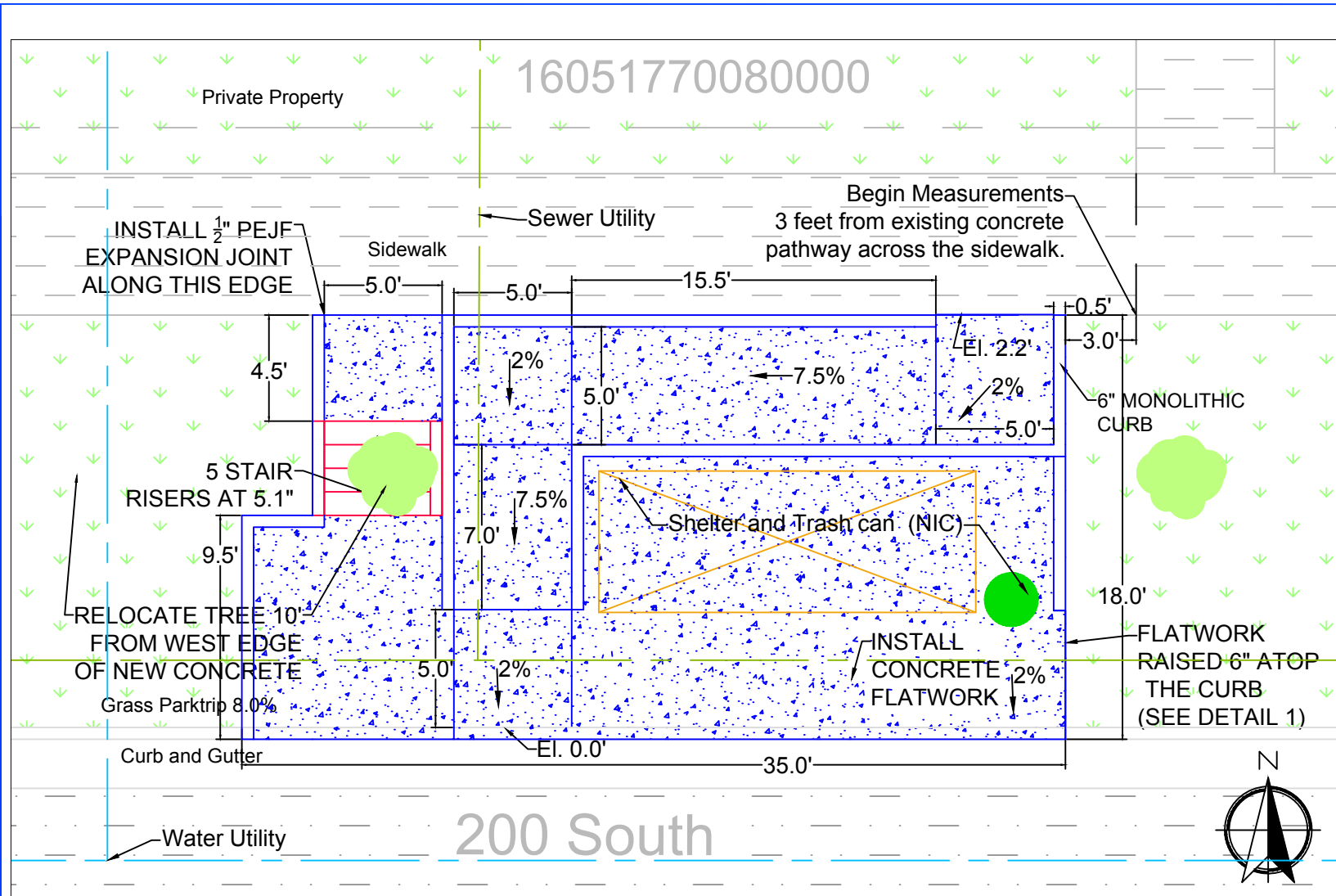
REV	DATE	DESCRIPTION	REV	DATE	DESCRIPTION



Designed By:
Landon Dixon
Drawn By:
Landon Dixon
Checked By:
Travis Jones
Approved By:
Jacob Splan

810 E. 200 S. Salt Lake City Ut.
Stop ID: 126370

Scale: 0.15	
GDG Filename: 810 E 200 S.dwg	
Submitted Date: April 21 2015	
UTA Contract No.:	
Drawing No. 1	Sheet No. 9



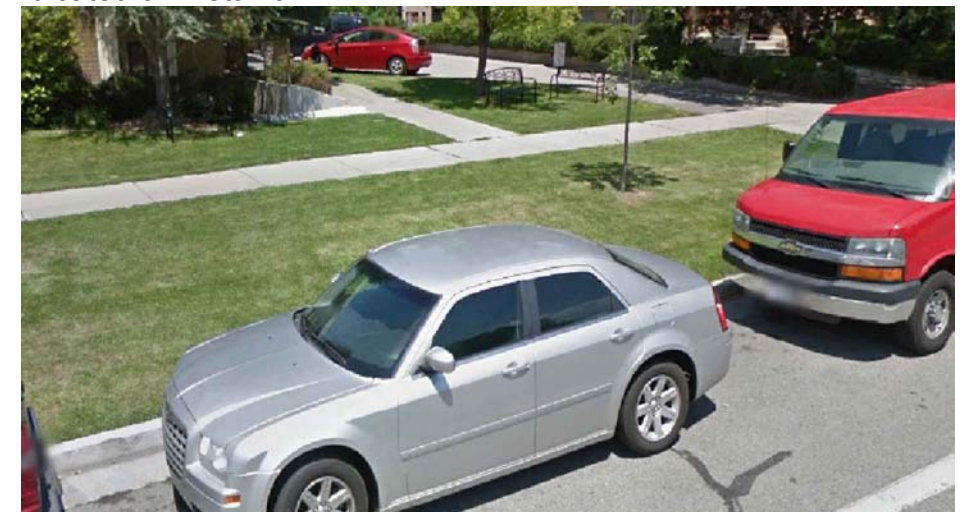
Notes

1. Parcel ID for Adjacent Property owner is 16051770080000
2. Extend the concrete flatwork over the curb to match the face of the existing curb. This new layer of concrete should add 6 inches to the height of the curb. (See Detail 1) This is intended to raise the entire level of the platform 6 inches so the ramp can be at an acceptable level.
3. A yellow line shall be painted along the edge facing the street.
4. Protect nearby Tree.
5. Concrete Flatwork shall be placed 6" higher than the curb resulting in a raised platform for the bus stop.
6. ADA compliant Railing shall be implemented on **both** sides of the ramp. Railing shall be cored into the the monolithic curb to a depth of 4"
7. The ADA ramp shall be approximately 6.5% along the proposed 24.5 feet. Field fitting is acceptable as long as the slope is consistent and does not exceed 8.0%.
8. All Flatwork shall be less than 2.0% draining toward the street.
9. Install Stairs with 5.1" Risers and 12" Runs with #3 rebar installed as indicated on Detail 3

of page D-1
 10. Relocate Western Tree 10' from the edge of the newly constructed concrete as indicated on the plan sheet.

Required Item	Approx. Quantities
Install Concrete Flatwork	604 SF
Untreated Base Course	7.46 CY
1/2" PEJF	32 LF
ADA Ramp	22.5 SF
Monolithic Curb	102.5 LF
Hand Railing	74 LF
Clear and Grub	604 SF
Stairs	5 CT
#3 Rebar	16 CT

Ridership
25 Boardings
63 Alightings



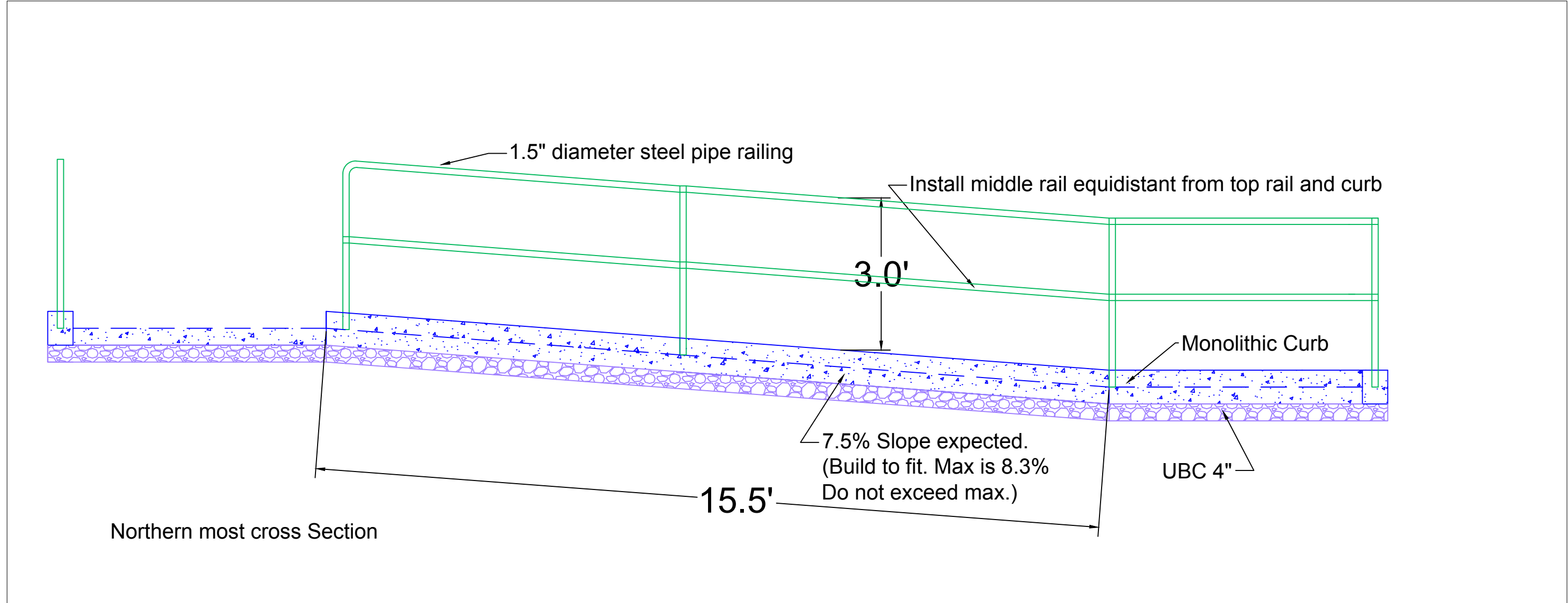
REV	DATE	DESCRIPTION	REV	DATE	DESCRIPTION



Designed By: Landon Dixon
 Drawn By: Landon Dixon
 Checked By: Travis Jones
 Approved By: Jacob Splan

865 E. 200 S. Salt Lake City
 Stop ID: 126708

Scale: 0.15	
GDD Filename: 865 E 200 S.dwg	
Submitted Date: April 21 2015	
UTA Contract No.:	
Drawing No. 1	Sheet No. 10



REV	DATE	DESCRIPTION	REV	DATE	DESCRIPTION



Designed By:
Landon Dixon

Drawn By:
Landon Dixon

Checked By:
Travis Jones

Approved By:
Jacob Splan

Scale:
1:5

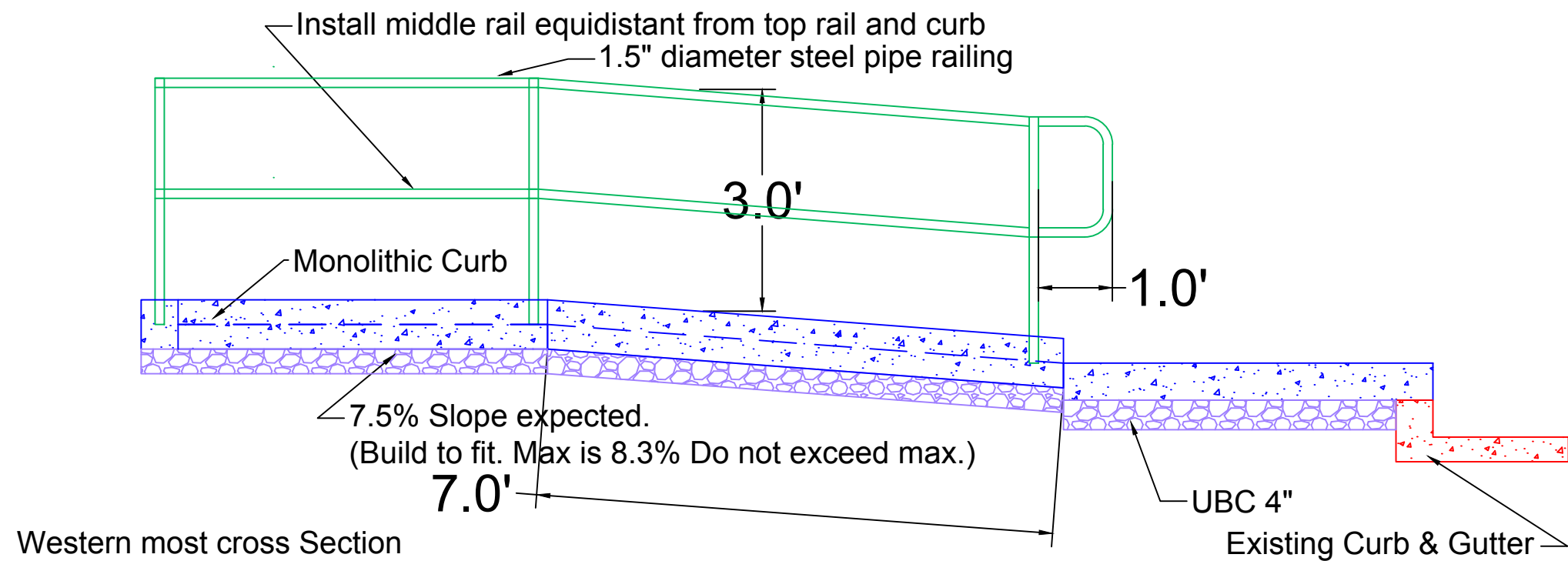
GDD Filename:
865 Ramp Profile Detail.dwg

Submitted Date:
April 21 2015

UTA Contract No.:

Drawing No. 1

Sheet No. 10-a



REV	DATE	DESCRIPTION	REV	DATE	DESCRIPTION



Designed By:
Landon Dixon

Drawn By:
Landon Dixon

Checked By:
Travis Jones

Approved By:
Jacob Splan

Scale:
1:5

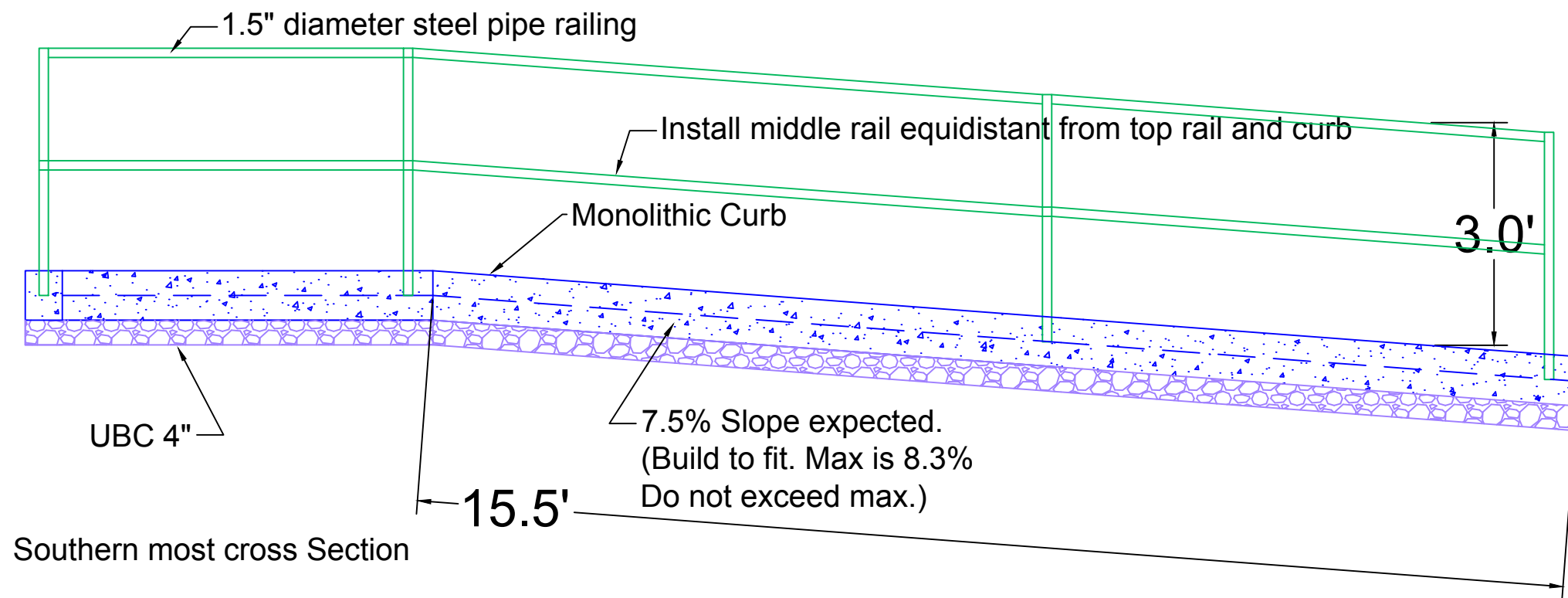
GDD Filename:
865 Ramp Profile Detail.dwg

Submitted Date:
April 21 2015

UTA Contract No.:

Drawing No. 1

Sheet No. 10-b



REV	DATE	DESCRIPTION	REV	DATE	DESCRIPTION



Designed By:
Landon Dixon

Drawn By:
Landon Dixon

Checked By:
Travis Jones

Approved By:
Jacob Splan

Scale:
1:5

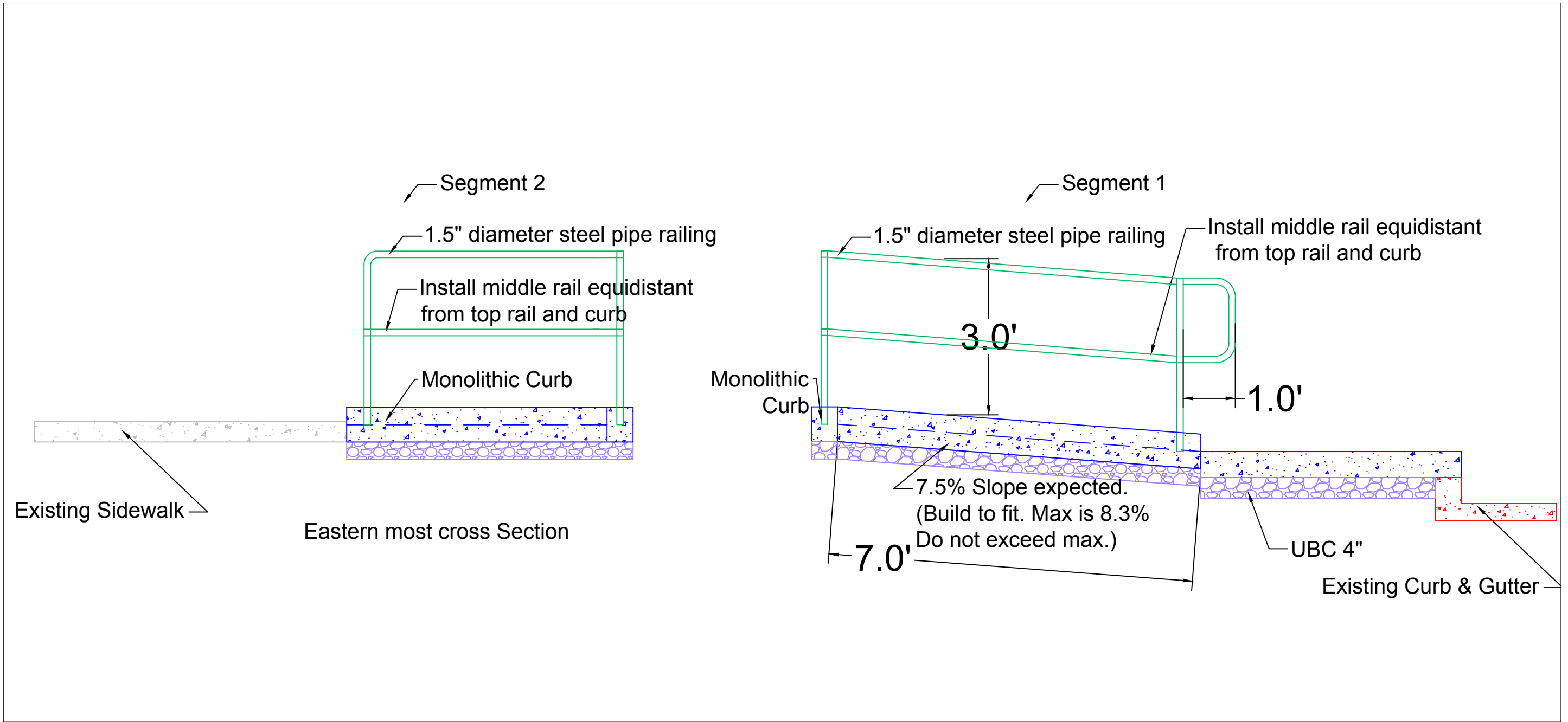
GDD Filename:
865 Ramp Profile Detail.dwg

Submitted Date:
April 21 2015

UTA Contract No.:

Drawing No. 1

Sheet No. 10-c



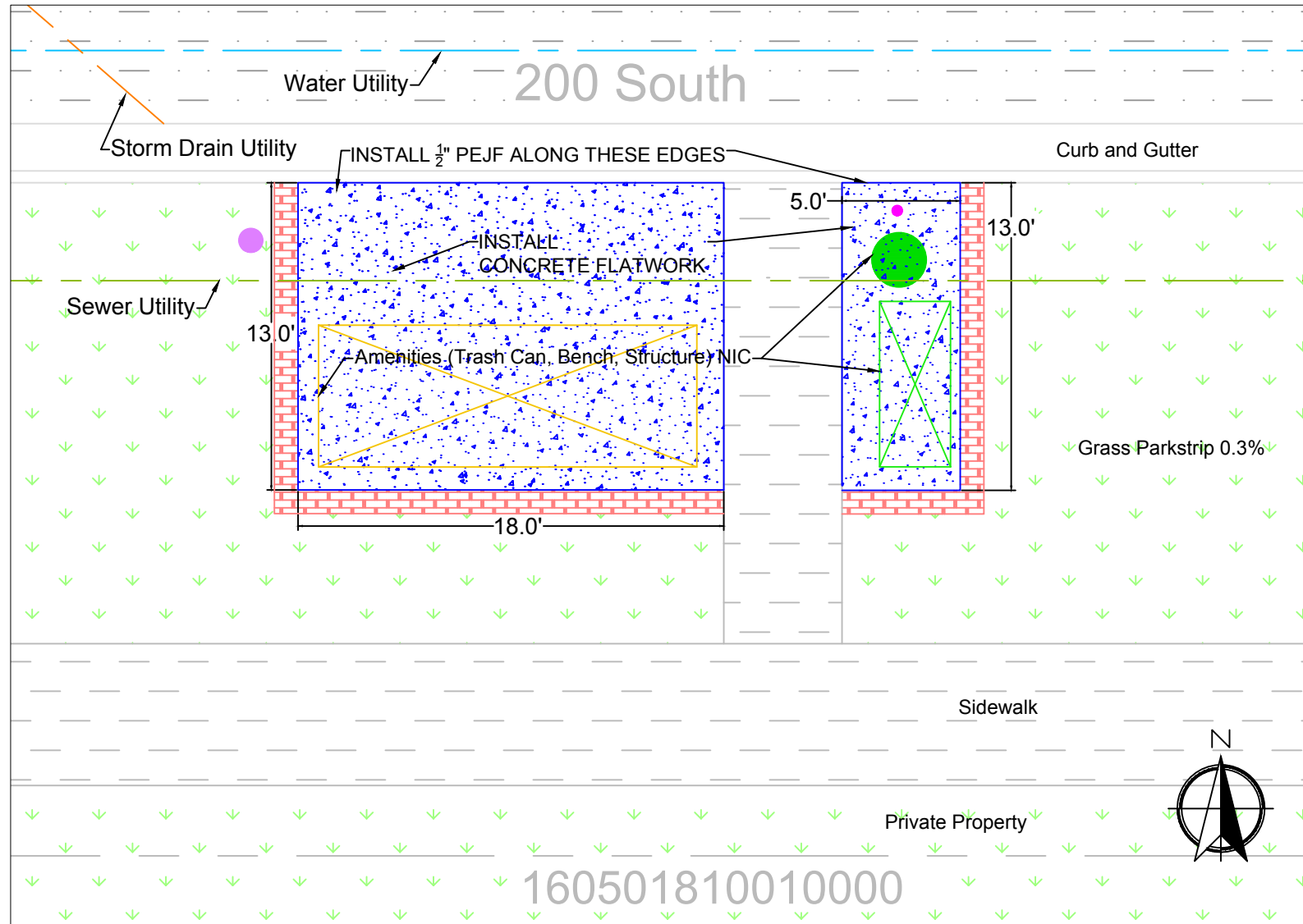
Eastern most cross Section

REV	DATE	DESCRIPTION	REV	DATE	DESCRIPTION



Designed By:
Landon Dixon
 Drawn By:
Landon Dixon
 Checked By:
Travis Jones
 Approved By:
Jacob Splan

Scale:
.5
 GDD Filename:
865 Ramp Profile Detail.dwg
 Submitted Date:
April 21 2015
 UTA Contract No.:
 Drawing No.: 1
 Sheet No.: 10-d

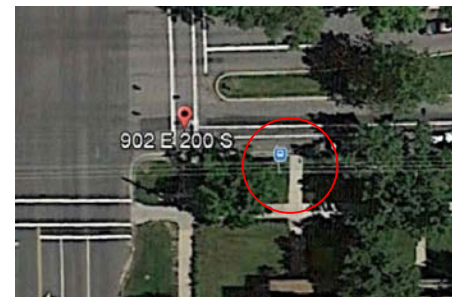


Notes

1. Provide Full Depth 1/2" PEJF expansion joint where indicated. Seal the top of the expansion joint with A-2-component, premium-grade, polyurethane-based, elastomeric sealant such as sikaflex-2 C NS EZ mix or approved equal.
2. All measurements of existing conditions are approximate and shall be verified in field by contractor.
3. Locations of existing utilities are unknown and shall be blue staked by the contractor prior to beginning of construction.
4. Passenger amenities (can and structure) shall be installed by others (NIC)
5. Any landscaping or irrigation that is disturbed during construction shall be replaced in kind by contractor.
6. Proposed concrete flatwork shall match the existing top back of curb or pavement grade.
7. All work shall follow APWA 2012 standard plans and specifications
8. All flatwork less than 2% draining toward the roadway.
9. Contractor is responsible to acquire the applicable building and encroachment permits. All other permits necessary to perform this work shall be the responsibility of the contractor.
10. Coordinate Final location of bus stop with UTA.
11. Parcel ID for Adjacent Property owner is 160501810010000
12. Protect existing concrete pathway to sidewalk.
13. Protect nearby Trees.
14. Preserve existing signs for relocation.

Required Item	Approx. Quantities
Install Concrete Flatwork	299 SF
Install Stamped Concrete	51 SF
Untreated Base Course	4.3 CY
1/2" PEJF	25 LF
Clear and Grub	351 SF

Ridership
107 Boardings
28 Alightings



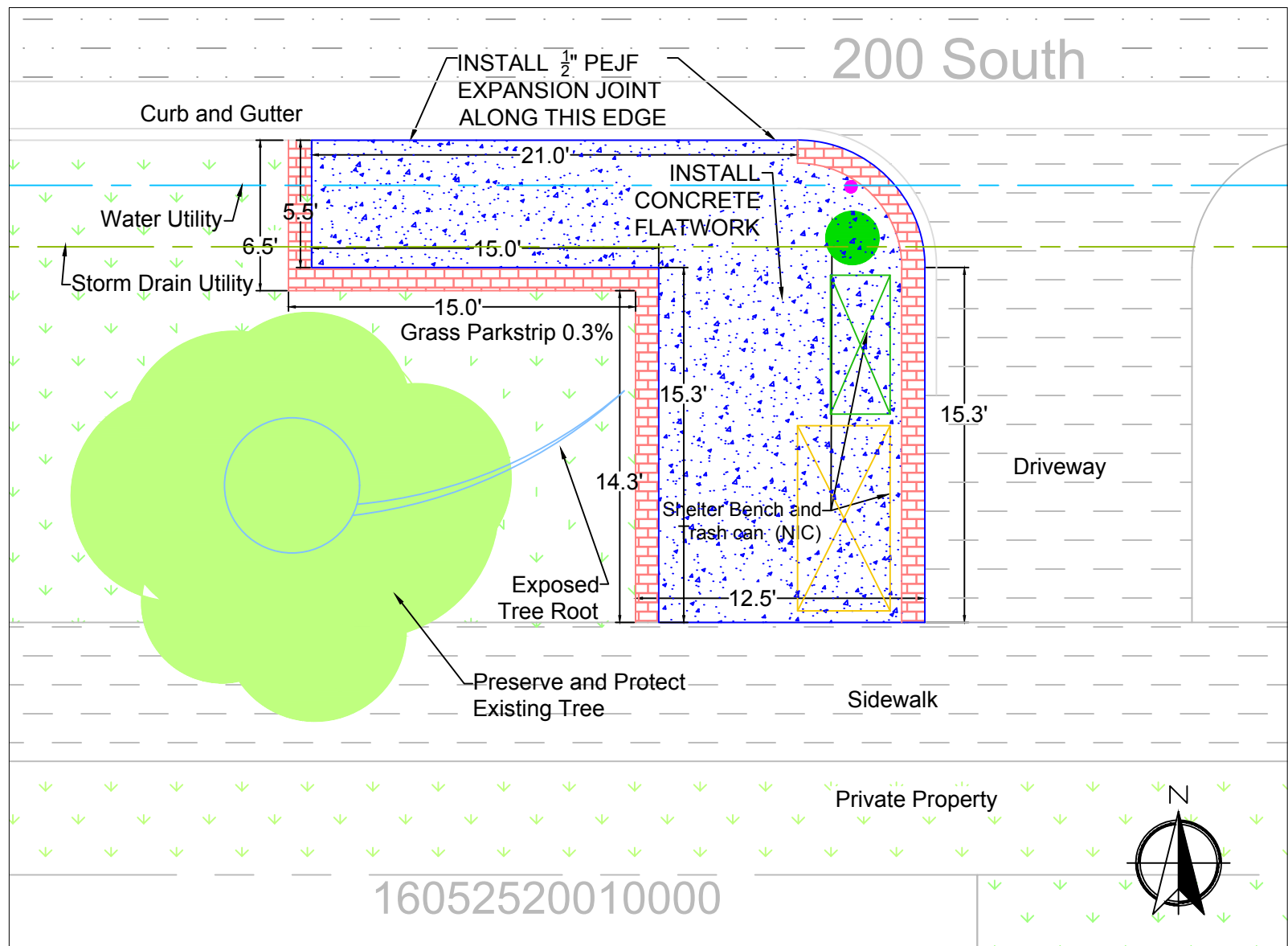
REV	DATE	DESCRIPTION	REV	DATE	DESCRIPTION



Designed By: Landon Dixon
 Drawn By: Landon Dixon
 Checked By: Travis Jones
 Approved By: Jacob Splan

902 E. 200 S. Salt Lake City
 Stop ID:126371

Scale: 0.15	
GDG Filename: 902 E 200 S.dwg	
Submit Date: April 21 2015	
UTA Contract No:	
Drawing No: 1	Sheet No: 11



Notes

1. Provide Full Depth 1/2" PEJF expansion joint where indicated. Seal the top of the expansion joint with A-2-component, premium-grade, polyurethane-based, elastomeric sealant such as sikaflex-2 C NS EZ mix or approved equal.
2. All measurements of existing conditions are approximate and shall be verified in field by contractor.
3. Locations of existing utilities are unknown and shall be blue staked by the contractor prior to beginning of construction.
4. Passenger amenities (can and structure) shall be installed by others (NIC)
5. Any landscaping or irrigation that is disturbed during construction shall be replaced in kind by contractor.
6. Proposed concrete flatwork shall match the existing top back of curb or pavement grade.
7. All work shall follow APWA 2012 standard plans and specifications
8. Contractor is responsible to acquire the applicable building and encroachment permits. All other permits necessary to perform this work shall be the responsibility of the contractor.
9. Coordinate Final location of bus stop with UTA.
10. Parcel ID for Adjacent Property owner is 16052520010000
11. Contact Urban Forester and coordinate construction to a time when Forester can be on sight to supervise construction
12. If a three inch root is encountered splicing must occur under the supervision and instruction of the Urban Forester.
13. All Flatwork shall be less than 2.0% draining toward the street.

Required Item	Approx. Quantities
Install Concrete Flatwork	292 SF
Install Stamped Concrete	59 SF
Untreated Base Course	4.3 CY
1/2" PEJF	66 LF
Clear and Grub	351 SF

Ridership
51 Boardings
18 Alightings



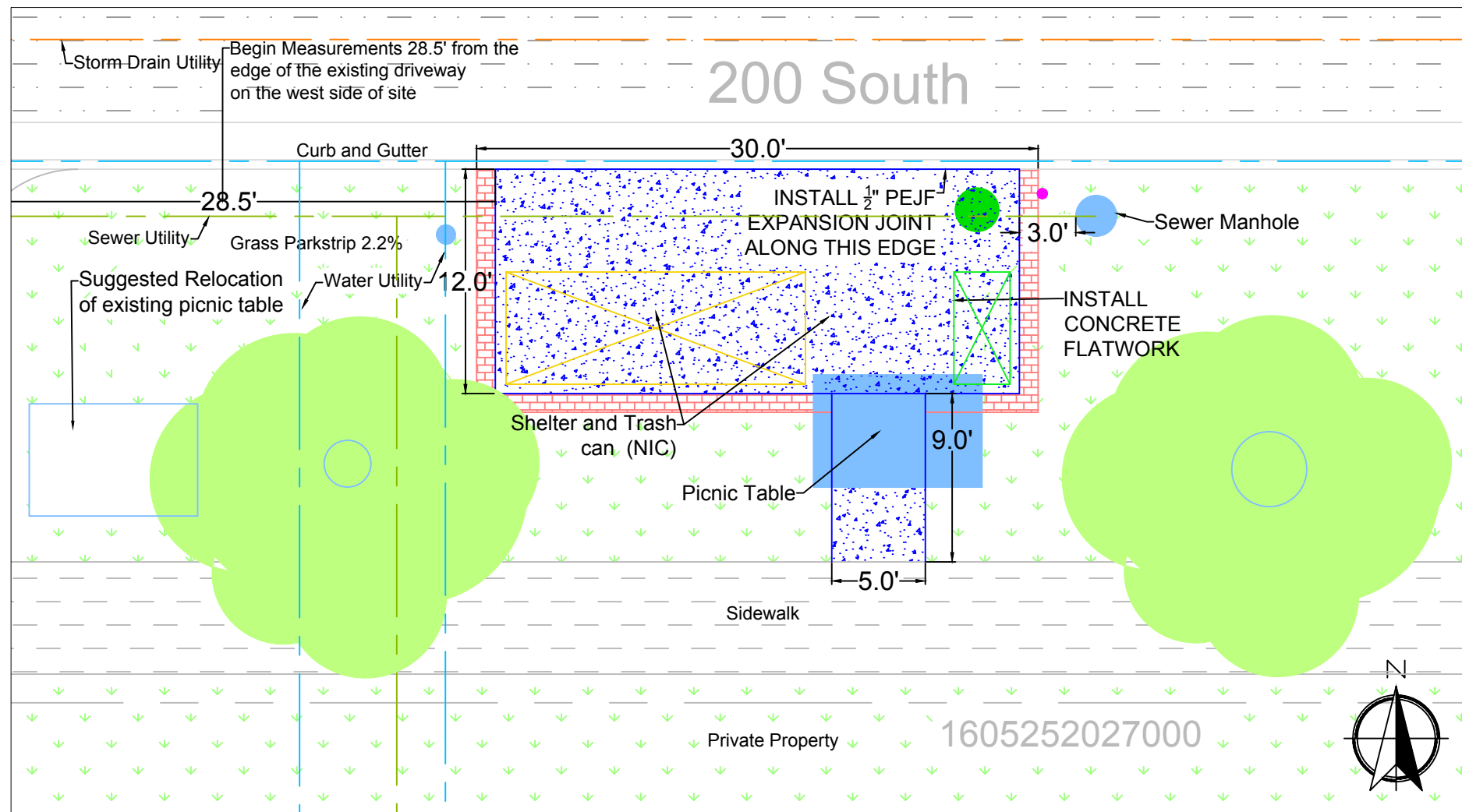
REV	DATE	DESCRIPTION	REV	DATE	DESCRIPTION



Designed By: Landon Dixon
 Drawn By: Landon Dixon
 Checked By: Travis Jones
 Approved By: Jacob Splan

1004 E. 200 S. Salt Lake City
 Stop ID: 126377

Scale: 0.15	
GDD Filename: 1004 E 200 S.dwg	
Submital Date: April 21 2015	
UTA Contract No.:	
Drawing No. 1	Sheet No. 12



Notes

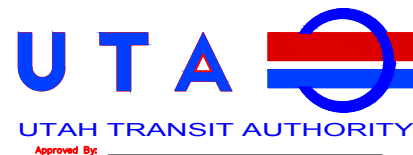
- Provide Full Depth 1/2" PEJF expansion joint where indicated. Seal the top of the expansion joint with A-2-component, premium-grade, polyurethane-based, elastomeric sealant such as sikaflex-2 C NS EZ
- All measurements of existing conditions are approximate and shall be verified in field by contractor.
- Locations of existing utilities are unknown and shall be blue staked by the contractor prior to beginning of construction.
- Passenger amenities (can and structure) shall be installed by others (NIC)
- Any landscaping or irrigation that is disturbed during construction shall be replaced in kind by contractor.
- Proposed concrete flatwork shall match the existing top back of curb or pavement grade.
- All work shall follow APWA 2012 standard plans and specifications
- Contractor is responsible to acquire the applicable building and encroachment permits. All other permits necessary to perform this work shall be the responsibility of the contractor.
- Coordinate Final location of bus stop with UTA.
- Parcel ID for Adjacent Property owner is 1605252027000
- Begin measurements 3 feet to the west of the Sewer Manhole.
- Contact Urban Forester and coordinate construction to a time when Forester can be on sight to supervise construction
- If a three inch root is encountered splicing must occur under the supervision and instruction of the Urban Forester
- Relocate existing picnic table to indicated location or alternative approved by adjacent property owner.
- Protect Sewer Manhole
- All Flatwork shall be less than 2.0% draining toward the street.

Required Item	Approx. Quantities
Install Concrete Flatwork	381 SF
Install Stamped Concrete	49 SF
Untreated Base Course	5.3 CY
1/2" PEJF	30 LF
Clear and Grub	430 SF

Ridership
72 Boardings
24 Alightings



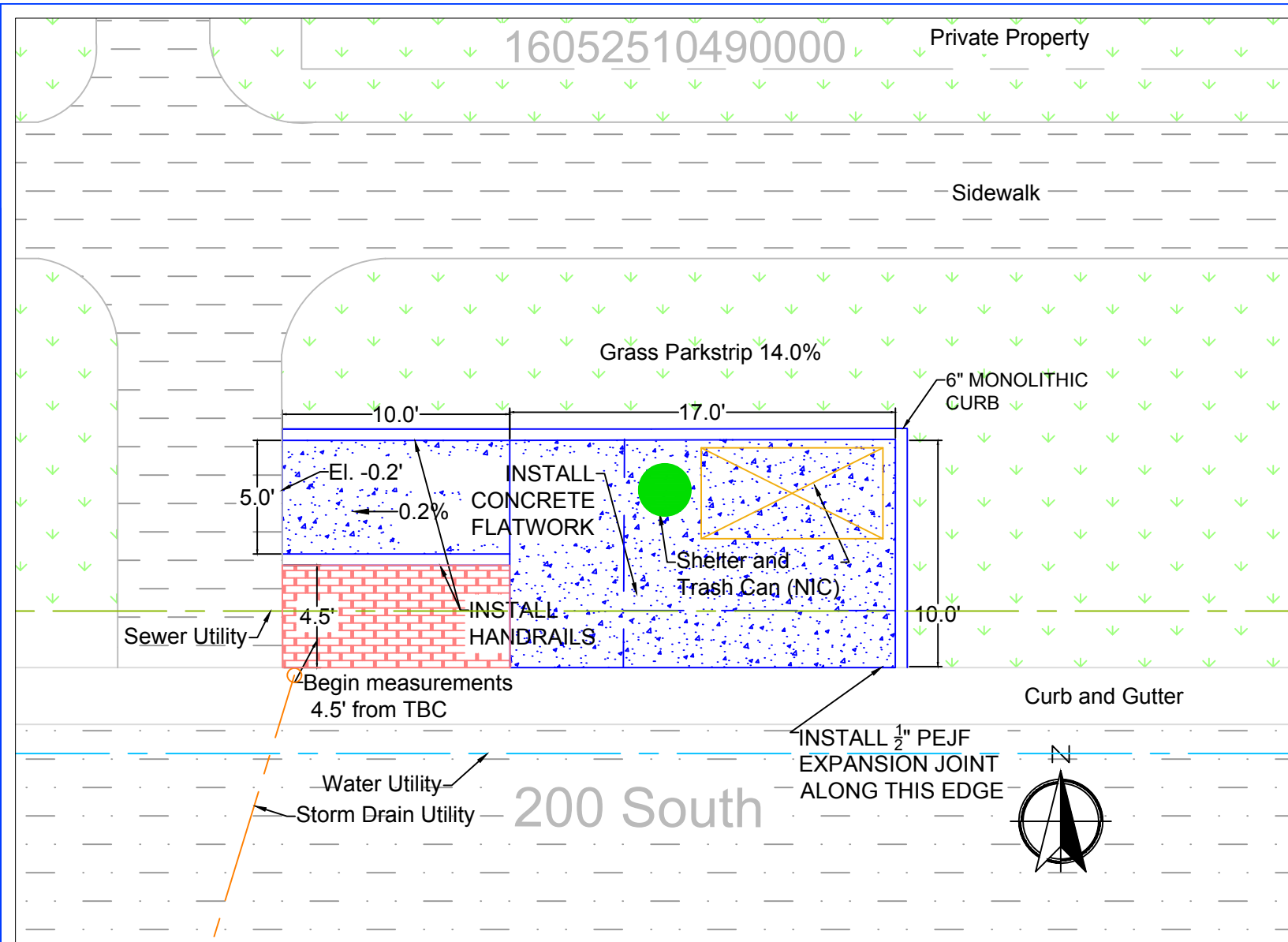
REV	DATE	DESCRIPTION	REV	DATE	DESCRIPTION



Designed By: Landon Dixon
 Drawn By: Landon Dixon
 Checked By: Travis Jones
 Approved By: Jacob Splan

1098 E. 200 S. Salt Lake City
 Stop ID:126373

Scale: 0.125
GDG Fleming
1098 E 200 S.dwg
Submitted Date: April 21 2015
UTA Contract No.:
Drawing No. 1
Sheet No. 13



Notes

1. Provide Full Depth 1/2" PEJF expansion joint where indicated. Seal the top of the expansion joint with A-2-component, premium-grade, polyurethane-based, elastomeric sealant such as sikaflex-2 C NS EZ mix or approved equal.
2. All measurements of existing conditions are approximate and shall be verified in field by contractor.
3. Locations of existing utilities are unknown and shall be blue staked by the contractor prior to beginning of construction.
4. Passenger amenities (can and structure) shall be installed by others (NIC)
5. Any landscaping or irrigation that is disturbed during construction shall be replaced in kind by contractor.
6. Proposed concrete flatwork shall match the existing top back of curb or pavement grade.
7. All work shall follow APWA 2012 standard plans and specifications
8. Contractor is responsible to acquire the applicable building and encroachment permits. All other permits necessary to perform this work shall be the responsibility of the contractor.
9. Coordinate Final location of bus stop with UTA.
10. Parcel ID for Adjacent Property owner is 16052510490000
11. Handrails shall be installed along **both** sides of the walkway as indicated. Railing shall be cored into the the monolithic curb to a depth of 4".
12. A Yellow Line shall be painted along the edge nearest the road
13. All Flatwork shall be less than 2.0% draining toward the street.

Required Item	Approx. Quantities
Install Concrete Flatwork	244 SF
Install Stamped Concrete	45 SF
Untreated Base Course	3.6 CY
1/2" PEJF	27.5 LF
Monolithic Curb	48 LF
Hand Rails	20 LF
Clear and Grub	289 SF

Ridership
19 Boardings
34 Alightings



REV	DATE	DESCRIPTION	REV	DATE	DESCRIPTION



Designed By: Landon Dixon
 Drawn By: Landon Dixon
 Checked By: Travis Jones
 Approved By: Jacob Splan

1105 E. 200 S. Salt Lake City
 Stop ID:126376

Scale: 0.15	
GDG Filename: 1105 E 200 S.dwg	
Submitted Date: April 21 2015	
UTA Contract No.:	
Drawing No. 1	Sheet No. 14

16052510490000

EI. 0.51'

EI. 1.40'

EI. 1.06'

EI. 1.16'

EI. 0.96'

EI. 0.10'

EI. 1.07'

EI. 1.39'

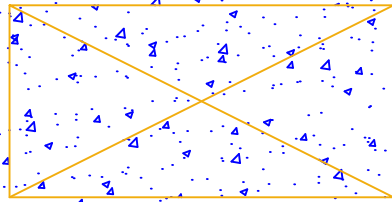
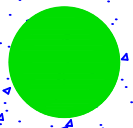
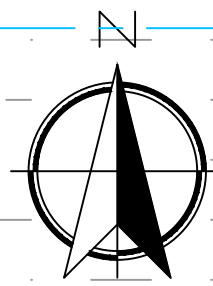
EI. 0.00'

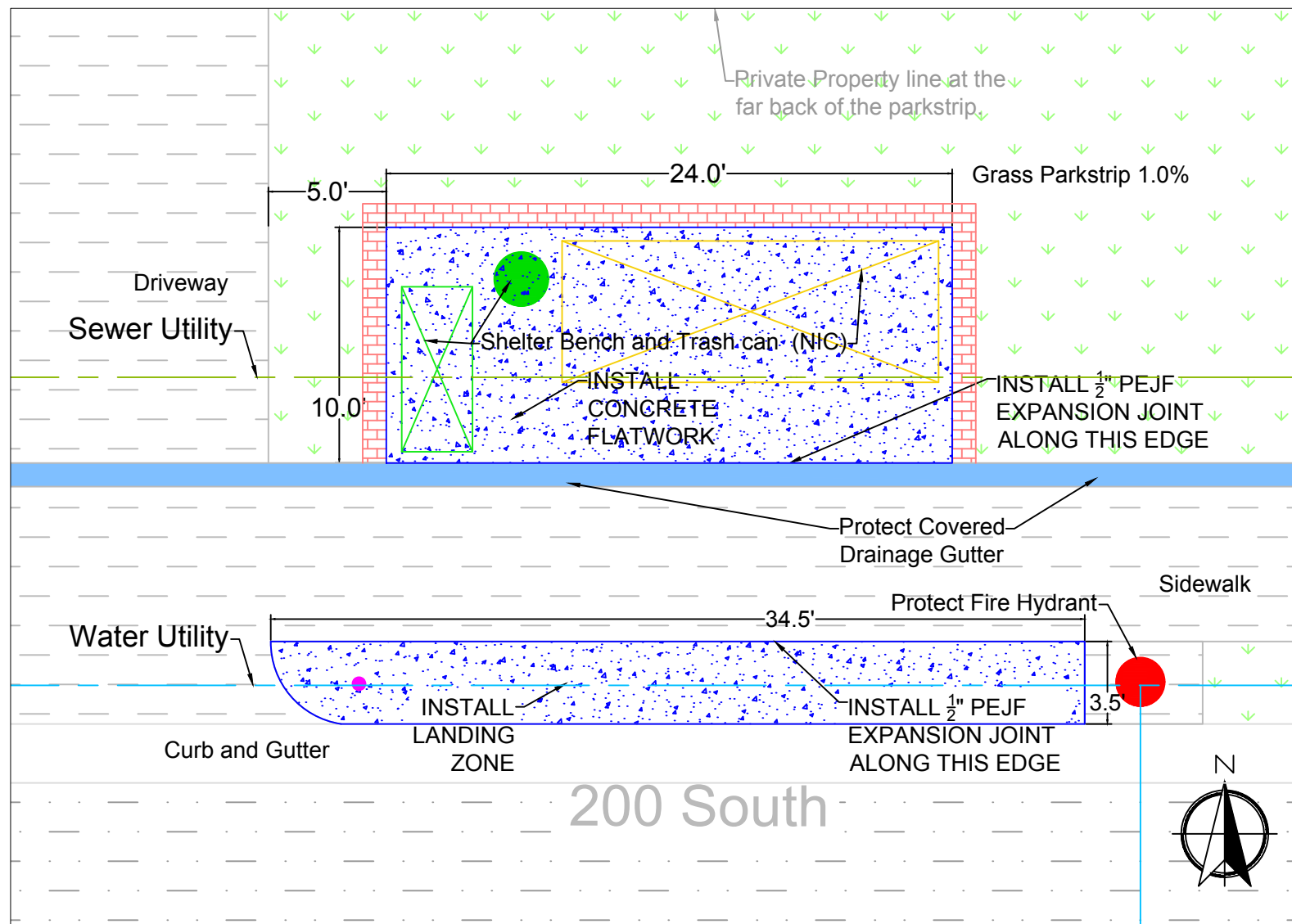
EI. 0.54'

EI. 1.02'

EI. 1.38'

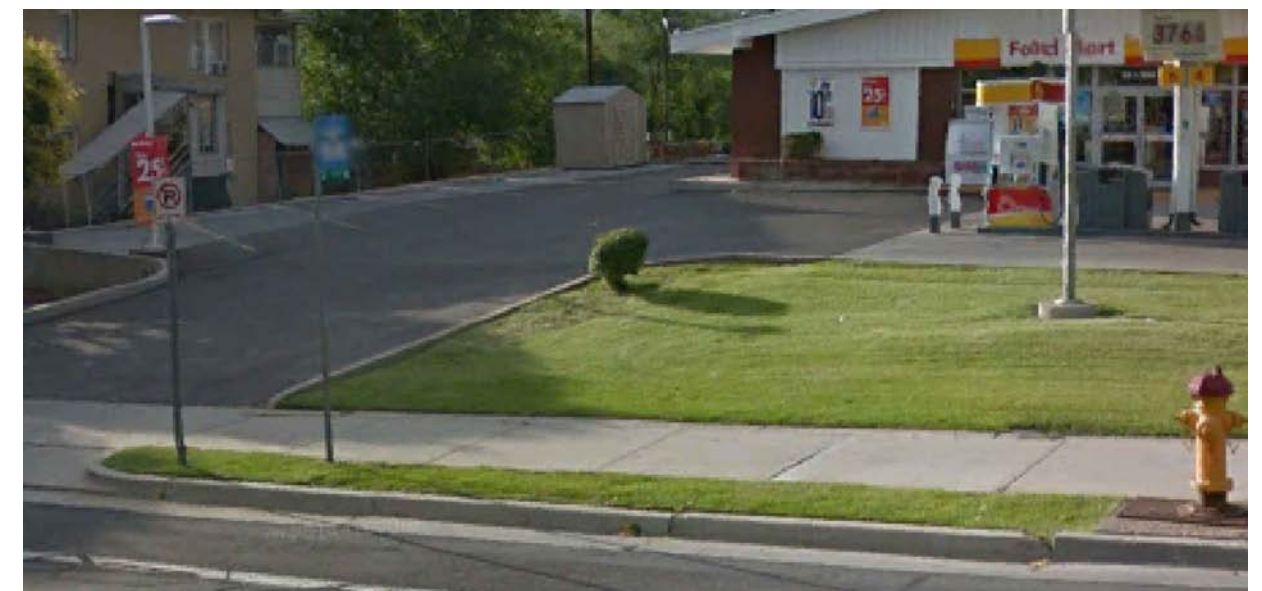
200 South





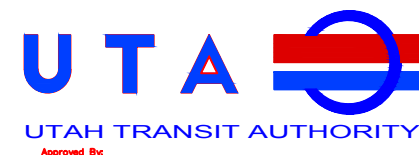
Notes

1. Provide Full Depth 1/2" PEJF expansion joint where indicated. Seal the top of the expansion joint with A-2-component, premium-grade, polyurethane-based, elastomeric sealant such as sikaflex-2 C NS EZ
2. All measurements of existing conditions are approximate and shall be verified in field by contractor.
3. Locations of existing utilities are unknown and shall be blue staked by the contractor prior to beginning of construction.
4. Passenger amenities (can and structure) shall be installed by others (NIC)
5. Any landscaping or irrigation that is disturbed during construction shall be replaced in kind by contractor.
6. Proposed concrete flatwork shall match the existing top back of curb or pavement grade.
7. All work shall follow APWA 2012 standard plans and specifications
8. Contractor is responsible to acquire the applicable building and encroachment permits. All other permits necessary to perform this work shall be the responsibility of the contractor.
9. Coordinate Final location of bus stop with UTA.
10. Parcel ID for Adjacent Property owner is 16052300340000
11. Protect nearby signage
12. Protect drainage canal on the Northern side of the Sidewalk.
13. All Flatwork shall be less than 2.0% draining toward the street.



Required Item	Approx. Quantities	Ridership
Install Concrete Flatwork	359 SF	37 Boardings
Install Stamped Concrete	46 SF	13 Alightings
Untreated Base Course	5.0 CY	
1/2" PEJF	60.5 LF	
Clear and Grub	405 SF	

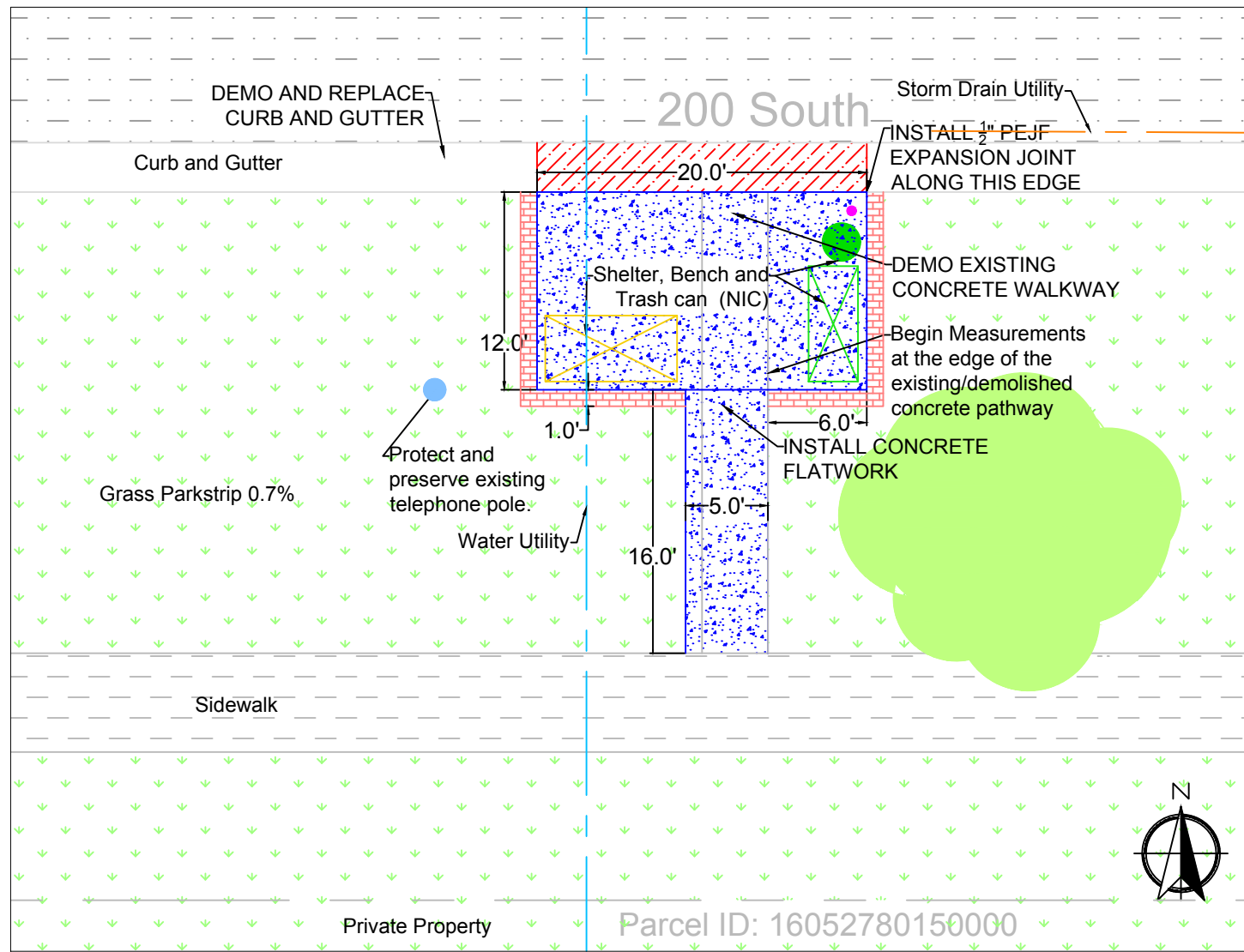
REV	DATE	DESCRIPTION	REV	DATE	DESCRIPTION



Designed By:
Landon Dixon
Drawn By:
Landon Dixon
Checked By:
Travis Jones
Approved By:
Jacob Splan

1275 E. 200 S. Salt Lake City
Stop ID:126375

Scale:
0.15
GDD Filename:
1275 E 200 S.dwg
Submitted Date:
April 21 2015
UTA Contract No.:
Drawing No. 1
Sheet No. 15

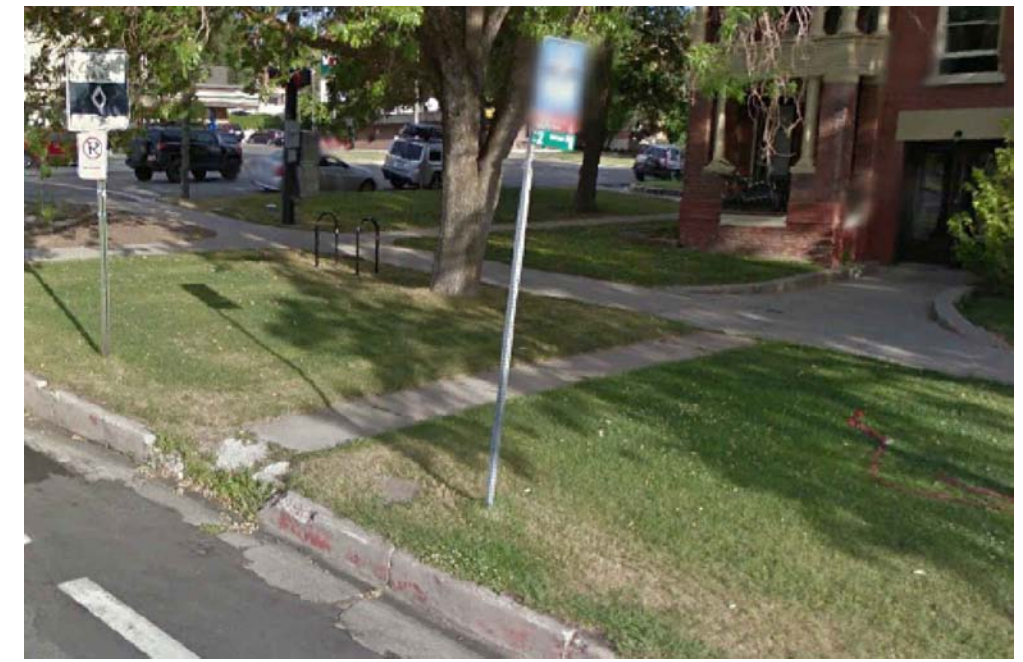


Notes

1. Provide full depth 1/2" PEJF expansion joint where indicated. Seal the top of the expansion joint with A-2-component, premium-grade, polyurethane-based, elastomeric sealant such as sikaflex-2 C NS EZ mix or approved equal.
2. All measurements of existing conditions are approximate and shall be verified in field by contractor.
3. Locations of existing utilities are unknown and shall be blue staked by the contractor prior to beginning of construction.
4. Passenger amenities (can and structure) shall be installed by others (NIC)
5. Any landscaping or irrigation that is disturbed during construction shall be replaced in kind by contractor.
6. Proposed concrete flatwork shall match the existing top back of curb or pavement grade.
7. All work shall follow APWA 2012 standard plans and specifications
8. Contractor is responsible to acquire the applicable building and encroachment permits. All other permits necessary to perform this work shall be the responsibility of the contractor.
9. Coordinate final location of bus stop with UTA.
10. Parcel ID for adjacent property owner is 16052780150000
11. Avoid and Protect nearby trees
12. Avoid and Protect nearby telephone pole
13. Demo and replace curb and gutter adjacent to new concrete pad.
14. Demo and replace existing concrete walkway with a 5 foot walkway to the existing sidewalk.
15. Protect existing sidewalk.
16. All flatwork shall be less than 2% and drain toward the roadway.

Required Item	Approx. Quantities
Install Concrete Flatwork	320 SF
Install Stamped Concrete	43 SF
Untreated Base Course	4.5 CY
1/2" PEJF	22 LF
Curb and gutter	20 LF
Demo Curb and Gutter	20 LF
Demo Concrete	112 SF
Clear and Grub	423 SF

Ridership
20 Boardings
51 Alightings



REV	DATE	DESCRIPTION	REV	DATE	DESCRIPTION



Designed By: Landon Dixon
 Drawn By: Landon Dixon
 Checked By: Travis Jones
 Approved By: Jacob Splan

1280 E. 200 S. Salt Lake City
 Stop ID:126374

Scale: 0.10	
GRID Filename: 1280 E 200 S.dwg	
Submitted Date: April 21 2015	
UTA Contract No.:	
Drawing No. 1	Sheet No. 16