

The SWMEA CONNECTION

newsletter of the Southwest Marine/ Aquatic Educators' Association 2013 Spring

SWMEA OFFICERS

President

Dave Bader, Aquarium of the Pacific

Chapter Rep

Judith Coats, Birch Aquarium

Treasurer/ Membership

Sarah Swain, Aquarium of the Pacific

Newsletter Editor

Steven Schenk, Shark Reef

Website Editor

Kellie Korhonen, Dolphin Quest

CONTENTS

1. New Waterfront Facility at Ocean Institute
2. Letter from the Pres
3. SWMEA Nominations
4. New Mascot at Romberg Tiburon Center
5. Whale Walk at Doheny State Beach
6. Whale Project at Aquarium of the Pacific
7. superSTAR of the Year
8. Courses and Resources

New Waterfront Facility at the Ocean Institute

The Ocean Institute is proud to introduce our newest facility, the Maddie James Seaside Learning Center. Named in honor of a special little girl, this new waterfront facility features a 300' Ocean Science Landing that provides several new learning stations and mooring for the Ocean Institute's R/V Sea Explorer and tallship Spirit of Dana Point. The Seaside Learning Center also includes a 100' Historic Maritime Pier with additional maritime-themed learning stations.

We are inaugurating our new Maddie James Seaside Learning Center with a host of innovative activities featured in our full-day summer camps. Activities will range depending

on camp type, and all stations will include exciting, new opportunities.

Along the Ocean Science Landing, students can maneuver camper-built ROVs, pull up fouling plates to examine the organisms settling below the surface, take water samples for chemical analysis, and explore the animals native to our coast. On the decks of the new Historic Maritime Pier, campers will get hands-on experience operating traditional simple machines used by 19th century sailors. They will use a capstan to raise and lower the anchor, work as a crew to coordinate the launching of the long boats, and climb the "mast" in order to set a real square sail.



To learn more about the new facility, visit www.ocean-institute.org and to learn more about The Maddie James Foundation, visit www.maddiejamesfoundation.org.

_____ *from the President* _____

Spring is a season of green things, new growth and new opportunities. At this time of year we in the Southwest realize that there are at least two seasons and that those on the East Coast don't know what they are missing. I hope that this spring in the Southwest everyone is finding new opportunities, new ideas, and you are making preparations for summer vacations and busy summer seasons.

It has also come time for a new beginning for SWMEA. The current board has served its term and we will be starting the process of selecting new leadership for SWMEA. I am excited for the opportunities this will bring and for the energies and direction that this new board will take SWMEA.

We as the members of SWMEA have a big job ahead of us. We must increase our membership, find or rediscover our identity, and begin to make our mark again on the Southwest. In my opinion this is not the job of the SWMEA board alone. It is rather up to those who are reading this letter. Who will you nominate for the Board? How much time will you invest? In what ways will you step up to make SWMEA the powerhouse in marine and aquatic education that it could be?

This is the time for your voice to be heard and for you to choose the path for SWMEA. I am sure that spring, a time of new beginnings, will prove to be a turning point in SWMEA's history.

Sincerely,

Dave

SWMEA Connection Call for Articles

We hope you enjoy this edition of your SWMEA Connection newsletter. We encourage all members to contribute articles and other news regarding your facilities and what's happening in your neck of the woods (or desert or ocean, wherever you may be)!

Check out the schedule below to see the deadlines and publication dates of upcoming SWMEA Connection editions. It's never too soon to start thinking about items you would like to submit for inclusion. Please send any articles to Kellie at kkorhonen@dolphinquest.com or to me at sschenk@mandalay-bay.com. Kellie and I both look forward to receiving your contributions, and to making the SWMEA Connection the most informative, interesting, and best looking newsletter out there!

Sincerely,
Steven and Kellie

Upcoming Newsletters

Summer 2013

Deadline - May 15th

Publication - June 1st

Fall 2013

Deadline - August 15th

Publication - September 1st

Winter 2013

Deadline - November 15th

Publication - December 1st

Spring 2014

Deadline - February 15th

Publication - March 1st

Call for SWMEA Board Member Nominations

As the saying goes, time flies when you're having fun! Our current board members have been actively supporting and promoting SWMEA, and its members, for nearly two years. As per our By Laws, the time has come to seek nominations for new (or returning) board members for our organization.

We strongly encourage all our members to give thoughtful consideration to the nomination of an individual, or individuals, that can champion SWMEA's mission and members into our bright future. The strongest board is one that best represents our diverse and remarkable five-state chapter.

Being a board member provides one with the opportunity to directly support and position SWMEA to serve as a leading resource for and network of aquatic and marine education professionals. Additionally, serving as a board member one can advance their own personal/professional growth in the field by engaging in unique learning, networking and collaborative opportunities.

Positions seeking nominations:

President- provides leadership in creating and carrying out the goals of the Chapter including writing a President's report to the annual membership meeting and Board meetings and write a President's letter for each issue of the SWMEA newsletter, assist with membership recruitment and supervise the quality and timeliness of work carried out by Board members. Work with board to set and implement promotional strategies for SWMEA, including social media.

Secretary/ Chapter Representative- represent the interests of the Chapter to NMEA and insures the regular flow of information between the Chapter and NMEA, serves as a voting member of the NMEA board, communicates with Chapter members via Chapter newsletters and/or reports at Chapter meetings on recommendations from NMEA as to how the Chapter can support NMEA goals, works with the President to set agendas and arrange conference calls, takes and disseminate notes to all officers and members regarding business covered in conference calls and at meetings, presents a brief summary of Chapter activities to the Board at the semiannual meetings, represents SWMEA at semiannual NMEA board meetings or identify a proxy to represent SWMEA at semiannual NMEA board meetings

Treasure/ Membership Secretary- manages Chapter finances including writing checks to cover expenses, depositing Chapter membership fees and reporting the balance to the Board, prepares books for annual audit, maintain current membership list, Process membership fees, sends by mail a ballot bearing all nominations for office to all active members in good standing with SWMEA, provides mailing labels/lists as needed by other Board members, responds to requests for information about membership, works with the other Board members to promote membership, provide regional updates/concerns during monthly conference calls.

Nominees should be:

- A member in good standing
- Have been a member for at least one year
- Able to fulfill the roles and tasks of their elected position

Nominations should be sent via email to the Nomination Committee Chair, Past President Kristin Evans, at klevans@ucsd.edu. Due date for nominations is April 8, 2013. Please include the following information in your nomination email:

- Full name of nominee
- Position being nominated for
- Nominee's occupation/title and place of employment (nominees do not need to be currently employed, but should be active in the aquatic/marine education field)
- Nominee's membership start date (year), if known
- Short summary of why you are nominating this individual for the selected position. Share their personal and professional strengths and their activity/contribution to the aquatic/marine education field.

New Mascot at the Romberg Tiburon Center for Environmental Studies

I'm a calanoid copepod, microscopic crustacean, a member of the zooplankton. I may be spineless and brainless, but I'm not without ethics and smarts!

My fellow copepods live in every part of the ocean and in freshwater, we are truly cosmopolitan creatures. There are about 15,000 species of copepods, and they may be the most abundant organism on the planet, eaten by everything from larger zooplankton and larval fish to bowhead whales. They eat phytoplankton, protozoa, and smaller zooplankton by moving their appendages to generate a circular current that brings the food right to their mouths. They are very sloppy eaters but excellent jumpers...Popularized in *SpongeBob Squarepants*, but definitely NOT evil.

As a member of the plankton, I'm a traveller by definition. I travel far and wide on bay, ocean, and even river currents, all the while "tweeting" content (interesting, fun facts, relevant science tidbits, etc.). I travel with RTC graduate students and faculty to

field sites, scientific conferences, and outreach events. Sometimes I stay home at RTC, going from lab to lab onsite, reporting on current research projects, RTC events (RTC seminars, RTCSA meetings) or even taking day trips to the SF State main campus.



The Lorax speaks for the trees, I speak for the seas! Be sure to follow me [@Callie_Copepod](#) so you don't miss a Tweet!

Callie Copepod is a property of [Giantmicrobes, Inc.](#)

*submitted by
Erin Blackwood, M.Ed.
Outreach Coordinator*



Whale Walk Returns to Doheny

After an absence of six-years, the Doheny State Beach Whale Walk is returning to the local park. On Tuesday, January 8th, members of the Doheny State Beach Interpretive Association (DSBIA) and state park staff painted a life-sized gray whale, the first of a planned 10-whale project, on the asphalt promenade that runs along the beach. The painters received cheers and encouragement from walkers and bike riders who passed by during the day, many remembering the former Whale Walk and pleased to see it coming back again.

Bill Brooks, President of DSBIA, called today's work a tune-up of their whale painting skills. "Now that we've dusted off our brushwork and trained some of our members, we're looking forward to doing more whales soon, but not just with DSBIA members. We hope to invite and assist local community groups in the effort." Any groups interested in helping can contact Ed Neely at edneely@dohenystatebeach.org.

"This is the third gray I've painted here in my tenure as Supervising Park Ranger," stated now retired park ranger Jim Serpa, "and I think it's probably the best." The original Whale Walk was painted by the interpretive association in February of 1999, but as it is on asphalt, the whole area needs to be resurfaced from time to time to protect the integrity of the roadway. "As DSBIA has been so focused on the renovation of our park's Visitor Center," Serpa continued, "the repainting of the Whale Walk dropped out of sight for awhile, but we're very excited to be bringing it back."

Brooks said, "The Whale Walk was, and will again be an important part of the interpretive efforts we support at Doheny. With the new Visitor Center hopefully opening soon, and the Whale Walk as it grows this year, along with other interpretive programs put on by the park staff, Doheny will once again become a very cost effective and educationally valuable destination for schools, youth groups and our regular park visitors."

The Doheny State Beach Interpretive Association is a support organization to Doheny State Beach, with the mission of promoting educational and interpretive activities and assisting with the preservation and restoration of the park and its interpretive facilities. Information about the organization can be found at its website: <http://www.dohenystatebeach.org/>.



Ranger Jim Serpa, Doheny State Beach Interpretive Association (DSBIA) President Bill Brooks and DSBIA members Ed Neely and Kathy Oshima stand by the completed Gray Whale. Both Neely and Oshima are retired elementary school principals in the Capistrano Unified School District.

*submitted by Ed Neely,
Doheny State Beach
Interpretive Association
Secretary*

Aquarium of the Pacific Teams Up for Whale Project

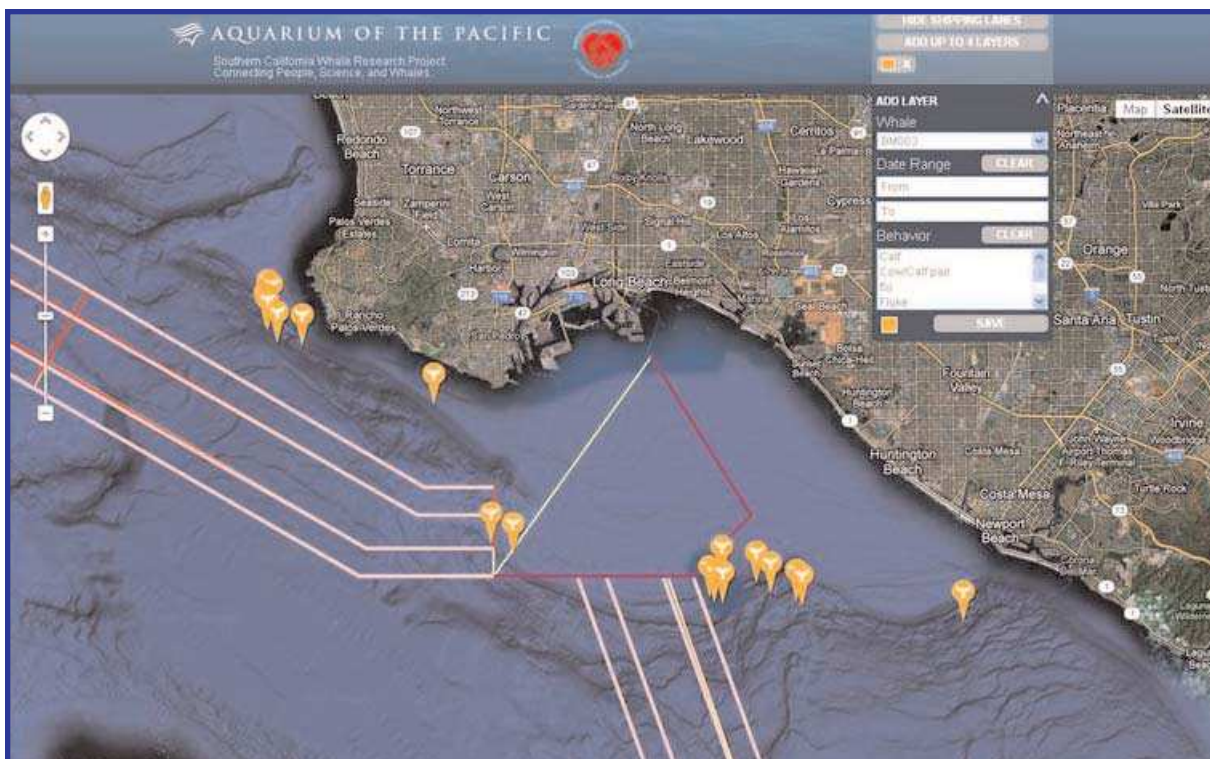
Since 2010, a strategic partnership between Cascadia Research Collective (CRC) and Aquarium of the Pacific (AOP) has trained staff to collect photo identification data on blue, fin, and humpback whales during whale watching trips. This information has in turn been used to create an interactive and inquiry-based at-home learning tool for cetacean lovers of all ages.

With this new tool we are engaging guests

with scientific inquiry. With growing changes in digital learning, we have created a web based application which makes this data available to not only our guests, but also anyone interested in learning more about whales. This application will allow curious minds to filter data to explore our local whales while at the Aquarium with an educator, at home, or in the classroom from the Aquarium website. Capabilities of the

application include comparing whale sightings from day to day, month to month, year to year, or any combination of these and following individual whales that have been seen through our area since June 2010. Users can also create and save filters to use at a later date and time, i.e. for class assignments or in a classroom setting.

*submitted by Kera Mathes
Education Specialist
Aquarium of the Pacific*



Go to <http://whaleproject.aquariumofpacific.org/> for more info!

superSTAR of the Year Announced at Shark Reef Aquarium

Shark Reef Aquarium's superSTAR of the Year winner for 2012 is Dave Laxton from the Life Support Department. Dave is described by his co-workers as someone who is always willing to lend a helping hand, does whatever needs to be done without ever complaining, an expert around the filtration system, and a great person to work with!

The superSTAR employee recognition program started in 2007 and is special because it is almost entirely employee driven. Each month, line-level employees

nominate their co-workers to be selected for superSTAR of the month. Monthly winners are chosen by a committee made up of the previous six months superSTAR winners. The superSTAR of the Year is selected by Shark Reef's team of senior managers. Each monthly superSTAR winner receives 10\$ in BayBucks to be used at Mandalay Bay's shops and also gets to go to lunch at one of the hotel's awesome restaurants.

Each year, the superSTAR of the Year winner is announced

during the annual Shark Reef Employee Appreciation Breakfast, complete with eggs, bacon, fruit, and delicious freshly made waffles. This year the breakfast was extra special as it took place in the new Seascapes Ballroom. This new room was built behind our large shark exhibit, and offers 3 huge windows into that exhibit in a personal and private setting. As the big winner, Dave receives a nights stay at the hotel, a dinner for 2 at one of the hotel's restaurants, and 2 tickets to any one of the shows offered by MGM Resorts.



BEETLES California Leadership Institute

August 11-16, 2013



Please join us! Improve your program by designing and delivering more effective professional development for your staff.

The BEETLES (Better Environmental Education, Teaching, Learning, Expertise & Sharing) California Leadership Institute for residential outdoor science school leaders will take place at Walker Creek Ranch Outdoor School in the beautiful rolling hills of West Marin County, August 11-13, 2013. The California Leadership Institute is open to pairs of leaders from 12 selected California programs.



The BEETLES team at the Lawrence Hall of Science along with our national advisers and program leaders from partner sites throughout California, has designed and tested a set of engaging professional learning experiences and trail activities for residential outdoor science schools. These science experiences inspire exploration, wonder, curiosity, and critical thinking in both students and naturalists. BEETLES creates resources to encourage learning cycle-based activities, learner-centered discussion strategies, and scientific habits of mind in outdoor science schools that deepen students' exploration and understanding of the natural world. Our goal is to support program leaders to deliver high quality professional development experiences to their staff.

The BEETLES California Leadership Institute will provide materials, tools, and opportunities to share and build leadership expertise to prepare participants to incorporate effective practices into professional learning experiences for their staff. Professional development sessions modeled during the institute will include: Teaching and Learning, Constructing Understanding, Questioning Strategies, Promoting Discussion, What is Science, Evidence and Explanations, Observation in Nature, Assessing for Learning and Big Ideas: Energy and Matter in Ecosystems.



Participants will receive a presenter's guide for implementing the BEETLES professional development program, including several additional sessions. We will address implementation of the Next



continued on next page...

Generation Science Standards throughout the Institute. We will facilitate collaborative planning time, to prepare participants to field test BEETLES professional development sessions with their staff during the following year. Participants become official BEETLES field test partners, and will be credited for their input into the design of the final versions that will be available free of charge via the BEETLES web site.

- Our commitment to you: 5 days of shared professional learning in a beautiful setting; stimulating discussions with colleagues about pedagogical research and big ideas in science; modeling effective practices and student-tested trail activities; room and board; 2 days of on-site technical assistance in the following year (e.g., coaching, leading a demonstration session, or co-presenting with program leaders). And all of this, free-of-charge.



- Your commitment to us: 5 days of time, focus, creative energy, and willingness to share expertise, from two program leaders (e.g., Director, Lead Naturalist); a commitment to incorporate BEETLES professional development into your program, to field test at least six of the professional development sessions with staff in the following year, and to provide us with feedback as requested.

If you are interested in applying, or would like to learn more, contact:

Emily Arnold, BEETLES Project Manager

(510) 642-5008

emarnold@berkeley.edu

or visit: www.lawrencehalloffscience.org/beetles (web site in progress)

Please make sure we have your application by April 1, 2013!!!



Dive into Ocean Literacy with Ocean Sciences Sequence for Grades 6-8

The Ocean – Atmosphere Connection and Climate Change.

2-day Educator Professional Development

July 22-23, 2013.

At the Lawrence Hall of Science, University of California, Berkeley

This workshop is designed for educators (formal and informal) interested in this new and exciting GEMS/MARE Curriculum Sequence. OSS Grades 6–8, Ocean – Atmosphere Connection and Climate change engages students in investigating climate change through the evolution of the ocean and atmosphere through Earth's history, movement of the atmosphere and ocean through density and air and water currents, the carbon cycle, and the ocean's relationship to climate and climate change.

Full registration is \$320 (\$280 for teams of 2 or more educators).

To register for this workshop: <https://www.regonline.com/OSS68workshop2013>

For assistance, contact: Dana Greene, dkgreene@berkeley.edu

For more information go to www.lawrencehalloffscience.org/gems/CurriculumSequences.htm

Upcoming Events

March 24, 2013

Romberg Tiburon Center small group tour -
2-4 pm. Space is still available, but limited to
24 adults. Go to www.rtctours.eventbrite.com
to RSVP

April 7 - 12, 2013

AZA Mid-Year Meeting at the South Carolina
Aquarium, Charleston, South Carolina

May 4, 2013

Romberg Tiburon Center Spring Teacher
Workshop focusing on the marine mammals of
the SF Bay Region. Go to
www.rtc.sfsu.edu/outreach/teachers
for more information

July 22 - 26, 2013

NMEA National Conference, Spring Hill College,
Mobile, Alabama

September 7 - 12, 2013

AZA Annual Conference at the Kansas City Zoo,
Kansas City, Missouri

Become a SWMEA member today!

The Southwest Marine/
Aquatic Educators'
Association (SWMEA) is a
marine educators network
throughout Arizona,
California, Colorado,
Nevada, New Mexico, and
Utah. Members receive
four on-line newsletters
each year and a
subscription to our
listserve. Receive
discounts on our
semi-annual professional
development seminars as
well as discounts in
several SWMEA facilities.

For more information
contact Sarah Swain at
SSwain@LBAOP.ORG

The SWMEA Connection

Steven Schenk
Shark Reef Aquarium
(702) 632-4566
sschenk@mandalaybay.com