



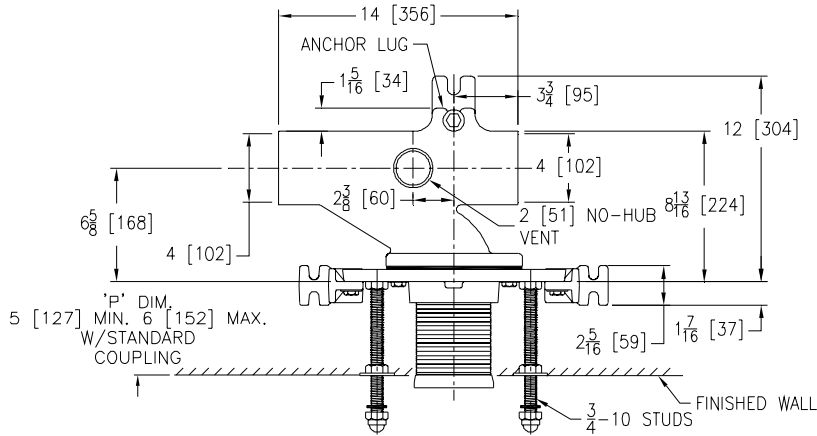
# Z1203-XH

## EXTRA-HEAVY-DUTY 500 LB. ADJUSTABLE HORIZONTAL SIPHON JET NO-HUB

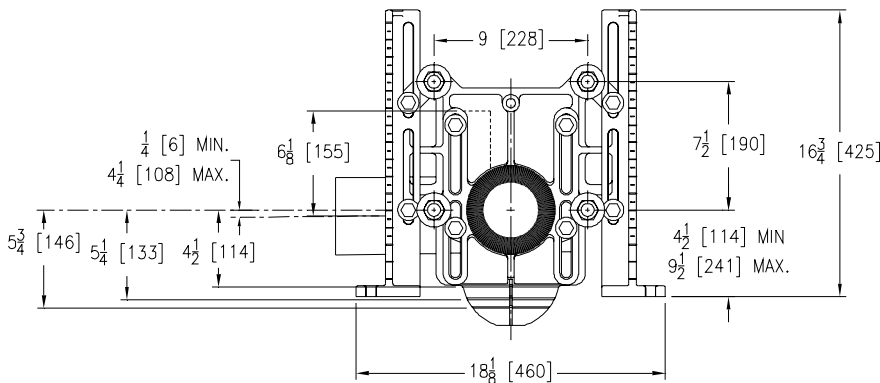
SPECIFICATION SHEET

TAG \_\_\_\_\_

Dimensional Data (inches and [ mm ]) are Subject to Manufacturing Tolerances and Change Without Notice



Product Number	Approx. Wt. Lbs. [kg]
Z1203-XH-NL4	67 [30]
Z1203-XH-NR4	



Note:

1. Min. 'P' Dim. Obtainable=2 [51]
2. Feet bolted to floor using min. 1/2 [13] dia. bolts and back slots on carrier feet.
3. Back anchor foot required for secure installation.

**ENGINEERING SPECIFICATION:** ZURN Z1203-XH( ) Extra-Heavy-Duty 500 Lb. Adjustable, horizontal siphon jet water closet "Rigid System" with 4 [102] No-Hub connections. Complete with Dura-Coated cast iron right hand or left hand main fitting, with 2 [51] vent, adjustable gasketed face plate, universal floor mounted foot supports, corrosion resistant adjustable ABS coupling with integral test cap, fixture bolts, trim, and stud protectors. Rear anchor tie down and bonded "Neo-Seal" gasket. The Zurn system complies with and exceeds all requirements of ASME A112.6.1M up to 500 pounds.

### OPTIONS (Check/specify appropriate options)

**Z1203-XH-NR4** 4 [102] No-Hub Right Hand Inlet with Flow to Left  
**Z1203-XH-NL4** 4 [102] No-Hub Left Hand Inlet with Flow to Right

### PREFIXES

\_\_\_ Z D.C.C.I. System with Zurn "ZZ" Adjustable Coupling\*  
 \_\_\_ ZQ D.C.C.I. System with Non-Adjustable Coupling

### SUFFIXES

___ -B	Blowout Type Fixture Support	___ -29	Mechanical Test Cap Assembly
___ -BC	Back Cleanout	___ -45	Finishing Frame for Siphon Jet System (For Blowout System Specify -45-B)
___ -CC	Corrosion Resistant Cast Iron Coupling (6 [152] to 12 [305])	___ -50	Flush Valve Supply Support for Water Closets
___ -CL	Coupling Length Greater Than 12 [305] (Specify Length Required)	___ -61	"ZZ" Coupling Wrench
___ -G	Galvanized Cast Iron		
___ -T	Threaded Stack Connection		
___ -VP	Vandal Proof Trim		
___ -W	Adapter for Womens Urinal		

\*REGULARLY FURNISHED UNLESS OTHERWISE SPECIFIED

REV. A DATE: 2/9/05 C.N. NO. 92937

DWG. NO. 63179 PRODUCT NO. Z1203-XH