

OUT & ABOUT

IN LETCHWORTH
GARDEN CITY

Directory

explore

learn

join
in



heritage
foundation

Letchworth Garden City

DO SOMETHING NEW



I WANT TO TRY
SOMETHING NEW!



Looking for a hobby?

Need somewhere to entertain the kids?

Want to learn something new?

**Got a Wednesday evening or a
Friday morning to fill?**

Your search ends here. This handy pocket guide gives you a host of things to do, out and about in Letchworth Garden City.



Contents





Discover the arts 06

Get involved with a charity or cause 14

Find a hobby 18

Entertain the kids 22

Learn something new 28

Your chance to win a prize 34

Meet new people 36

Get active 46

Explore the countryside 54

Tell us what you think 60

Get listed for next time 61

Supporting local activities 62

DISCOVER THE ARTS



Dance

Dance

Dance

Music



Film

Music

Music

Film

Music

Film

Theatre

Drama

Visual
Arts

Drama

Music

Drama

Theatre





Jazz Appreciation Society

Listening to recorded Jazz. Normally last Thursday evening of the month.

Letchworth Arts Centre,
2 The Arcade.

T: 01462 454562

E: judy_wright@btinternet.com

Letchworth & Baldock Folk Club

Performances and play, sing and listen sessions. Every Wednesday evening, from January to July and September to December.

The Orange Tree,
Norton Road, Baldock.
www.madnanny.co.uk
T: 01767 683583

Letchworth & District St Andrew's Society

Scottish country dancing. Every Monday evening from February to July and September to December.

T: 01462 679112

Letchworth Art Society

Drawing and painting for pleasure. Every Tuesday evening, from January to July and September to December.

The Settlement, Nevells Road.
E: joycemwebb@btinternet.com





Over 25 singers practise and perform choral music with Letchworth Chorale.

Letchworth Chorale

Chamber-style choir. Every Monday evening, from January to July and September to December.

Central Methodist Church,
Norton Way South.

www.letchworth-chorale.org.uk

Letchworth Film Club

Watching quality modern and classic films. Every first Sunday evening, from January to June and September to December.

Broadway Cinema, Eastcheap.
www.letchworthfilmclub.com



Letchworth Music Club

Chamber music performances. Every second Wednesday evening, from January to May and October to December.

Howgills, South View.
www.lgc.amolad.net/musicclub

Letchworth Recorded Music Society

Appreciating recorded classics. Every first and third Friday evening, from January to March and September to December.

www.thefrms.co.uk/affprogs/letch.html
T: 01462 632171

Lordship Theatregoers

Organising trips to local and national shows.

www.lordshiptheatregoers.co.uk
E: cliveroylance@btinternet.com

Rainmakers International Folk Dance

Enjoying dances from around the world. Every Friday evening, from January to July and September to December. At St Michael's Church Hall, Broadway.

www.rainmakers.org.uk
T: 01438 812766
T: 01462 457791



LETCWORTH ARTS

CENTRE



Letchworth Arts Centre is a leading arts charity serving the communities of Hertfordshire and Bedfordshire offering:

- Courses for children and adults
- A lively events programme including comedy nights, drama, story telling and live music
- Three gallery spaces featuring exhibitions from a diverse range of artists
- Vibrant Arts Café serving tasty homemade food
- Private hire available for business meetings and social functions

2 The Arcade,

Letchworth Garden City

www.lethwortharts.org

T: 01462 670788



Left - A craft fair in the main gallery.
Above - A children's puppetry pantomime.



SPADS performing
Sleeping Beauty, their 2011
Christmas pantomime.

Settlement Players

Amateur dramatics. Every Monday, Wednesday, Saturday evening, from January to June and September to December.

The Settlement,
Nevells Road.

www.settlement-players.org.uk

Song Performance and Dramatic Society (SPADS)

Every Monday and Thursday evening, from January to July and September to December.

St Paul's Church Hall,
Pixmore Way.

www.spads-drama.org.uk

T: 01462 486408

Variety Express

Amateur dramatics. Every Wednesday evening, from March to October.

St Mary's Church Hall,
Church Street, Baldock.
www.varietyexpress.org.uk
T: 01462 685690

Wilbury Hills Amateur Theatrics

Theatrical rehearsals.
Every Monday evening,
from February to May and
September to December.

St Thomas Church Hall,
Bedford Road.
www.whatperform.org

Letchworth Arts and Leisure Group

A group by local people for local people. Organising visits, leisure, learning, walks, sports and much more.

NEW FOR 2012

Keeping Chickens
Excel & PowerPoint self-help
Linguistics
British Climate & Weather
Poetry for pleasure
Transport & Industrial Heritage
Looking at pictures.

More details at
www.lalg.org.uk



GET INVOLVED WITH A CHARITY OR CAUSE



Volunteering

Good
Causes

Helping
Meeting People

Meeting
People

Volunteering

Making a
Difference

Helping

*Good
Causes*

Making a
Difference

Good
Causes

Letchworth Festival Steering Committee

Organising the town's festival, planned from Friday 8 to Sun 24 June. Meeting occasional Monday, Tuesday & Thursday evenings.

www.letchworthfestival.org

Letchworth Garden City & Baldock Lions Club

Socials and fundraising. Every second and fourth Monday evening.

E: lion.harrylote@yahoo.co.uk

Letchworth Round Table

Raising money for local needs. Every second and fourth Thursday evening.

www.letchworthroundtable.co.uk

Rotary Club of Letchworth Howard

Fellowship and charity work. Most Monday evenings.

Broadway Hotel, Broadway.

www.letchworthrotary.org.uk

T: 01462 685448

St Thomas More Parents' Association

Raising funds for school projects. Every second Monday or Tuesday evening, in January, March to July and December.

St Thomas More RC

Primary School, Highfield.

www.stmpa.btck.co.uk



Titan the Robot at
Street Fest in Leys Square.

Letchworth Town Centre Partnership

Organising an array of events
to bring fun and excitement
to visitors of Letchworth
Garden City town centre.

www.shopletchworth.com
T: 01462 486999



COMMUNITY HUB

IN LETCHWORTH



Free
non-regular
meeting spaces for
community clubs
and groups.

- Chat to the team about making changes to your home, community grants, property or anything else we do.
- Share your ideas about the Garden City, present and future.
- Find out more about the work we do for Letchworth's communities.

43 Station Road,
Letchworth Garden City
T: 01462 476694



heritage
foundation
Letchworth Garden City

FIND A HOBBY



Crafts

Collecting **Creative**

Collecting

Collecting

Dancing Creative

Dancing Playing

Dancing

Crafts

Discovering

Playing

Discovering

Discovering

Clifton Bridge Club

Every Friday evening.

St George's Church Hall,
Clulow Room.

T: 01462 895708

E: alandellis@hotmail.com

Corner Bridge Club

Every Thursday afternoon.

St George's Church Hall,
Clulow Room.

T: 01462 433393

Letchworth and Hitchin Chess Club

Every Monday evening.

Three Horseshoes,
Baldock Lane, Willian.

www.lethworthchess.com

T: 01462 484733

Letchworth & District Astronomical Society

Every last Wednesday evening.

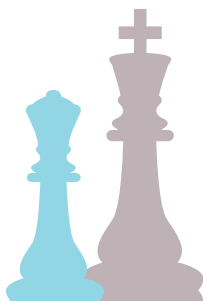
Mrs Elizabeth Howard
Memorial Hall.

www.ldas.org.uk

Letchworth Bridge Club

Every Tuesday evening.

Baldock Community Centre,
Simpson Drive.



Letchworth Garden City Camera Club

Every Thursday evening, from January to May and September to December.

The Settlement, Nevells Road
www.letchworthcameraclub.org.uk

T: 01462 672432

Letchworth Model Railway Society

Every Monday and Wednesday evening.

Oswald Hall, Standalone Farm, Wilbury Road.
www.letchworthmrs.org.uk

Letchworth Morris Men

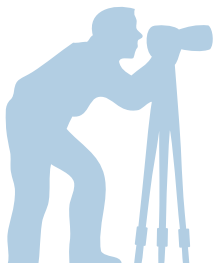
Every Thursday evening, from January to July and October to December.

Radwell Village Hall, Radwell Lane, and on location.
www.letchworthmorris.org.uk

North Herts Stamp Club (Letchworth)

Every last Friday, from January to May and September to December

Philatelic Gallery, Postal Pursuits, 9 The Arcade.
T: 01462 635752



Steve (front) has been building layouts with the Letchworth Model Railway Society for over 24 years.



ENTERTAIN THE KIDS

Playschemes

Playschemes



Dance
Lessons

Playschemes

Dance

Dance
Lessons

Scout
Groups



Scout
Groups

Farmyard
Animals

Farmyard
Animals



Farmyard
Animals



Boys and Girls Brigade (Central Methodist)

Fun and games; earning badges. Every Friday evening, from January to July and September to December.

Central Methodist
Church Hall, Pixmore Way.

T: 01462 630489

Boys and Girls Brigade (Free Church)

Fun and games; earning badges. Every Monday evening during term-time.

Letchworth Free Church Hall,
Gernon Road.

T: 01462 625592

Grange Tiny Hands Pre-School

Pre-school education. Every weekday during term-time, from January to July and September to December.

Grange Community Centre,
Middlefields.

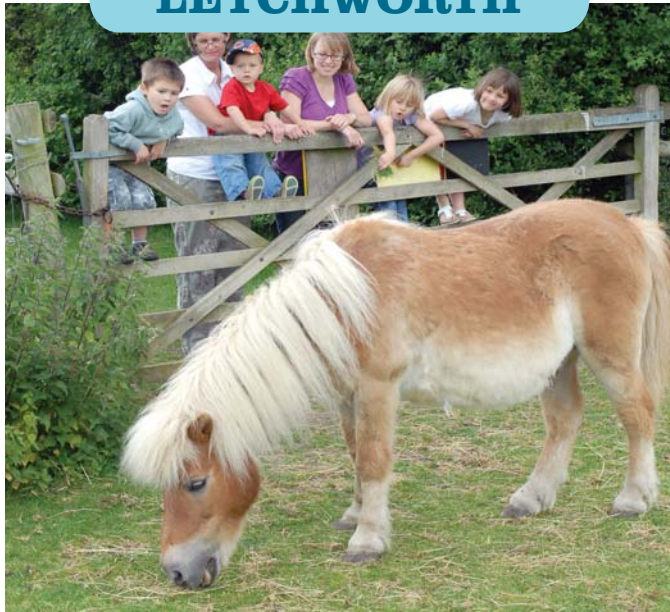
www.tinyhandspreschool.org.uk

T: 01462 627333



STANDALONE FARM

LETCHWORTH



- Animals large and small
- Tractor rides
- Play areas
- Picnic barn & café

Wilbury Road, Letchworth
Garden City.

www.standalonefarm.com

T: 01462 686775

**Open March to October,
10am to 5pm**

Funded and run by



**heritage
foundation**
Letchworth Garden City





Helen O'Grady Drama Academy

Every Saturday morning, from January to July and September to December.

Letchworth Arts Centre,
2 The Arcade.

www.helenogrady.co.uk

T: 01462 713406

Jo Jingles

Music and movement for up to fives. Every Monday and Thursday morning, during term-time.

Par 3 Golf Centre, Willian Way
and St George's Church Hall,
Norton Way North.

www.jojingles.com/northherts

T: 01462 456777

Letchworth & Baldock Scouts

Nine troops meeting regularly across Letchworth Garden City and Baldock.

www.lbdscouts.org.uk

T: 01462 624365

Wild Camp

Holiday playscheme.
Every weekday during
school holidays.

North Hertfordshire Leisure
Centre, Baldock Road.

[tina.lander@stevenage-](mailto:tina.lander@stevenage-lesuire.co.uk)

lesuire.co.uk



LOOKING FOR...

a space to hold your
child's party?

Find out about:

Broadway Cinema, Eastcheap
www.broadway-cinema.com
T: 01462 681088

Jackmans Community Centre, Ivel Court
www.jackmanscommunitycentre.co.uk
T: 01462 642525

Scout Hut, Icknield Way
www.lbdscouts.org.uk

Scout Hut, Spring Road
www.8thletchworthscoutgroup.org

Brotherhood Hall, Gernon Road
T: 01462 434658



LEARN SOMETHING NEW



Languages

Languages

Crafts

Languages

Skills

Local

History

Local History

Sustainability

Sustainability

Local History

Crafts

Skills

Computer



Flowers for all

Developing arranging skills. Every Friday morning, from January to June and September to December.

Letchworth Arts Centre,
2 The Arcade.

www.letchwortharts.org

T: 01462 670788

Letchworth and District Family History Group

Discovering family and social history. Every third Wednesday evening, from January to July and September to November.

www.ldfhg.org.uk

T: 01707 332681

Letchworth Garden City Society

Learn about the Garden City. Most Mondays, from January to June.

The Settlement,
Nevels Road.

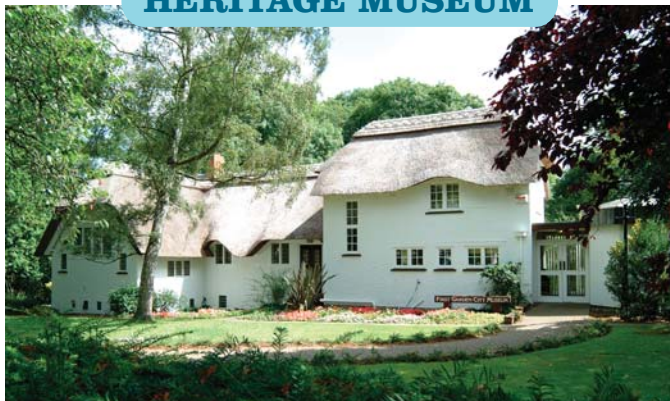
www.lgs.org.uk

T: 01462 686925



FIRST GARDEN CITY

HERITAGE MUSEUM



Discover the story behind the 1903 Edwardian social experiment which influenced town and country planning around the world.

Norton Way South,
Letchworth Garden City.
www.gardencitymuseum.org
T: 01462 482710

Explore...

- The story of the Garden City Movement
- The original town architect's drawing office
- Architect drawings over 100 years old
- Exhibitions on Letchworth's social history

Funded and run by



heritage
foundation
Letchworth Garden City

North Hertfordshire Motor Neurone Association

Support and help group.
Every fourth Wednesday
evening, from January to July
and September to November.
Bedwell Community Centre,
Stevenage.
www.mnd.n-herts.freeuk.com

Norton Community Archaeology Group

Every third Thursday evening.
At Three Horseshoes, Norton.
www.nortoncommarch.com
T: 07956 461727

Photoshop Group

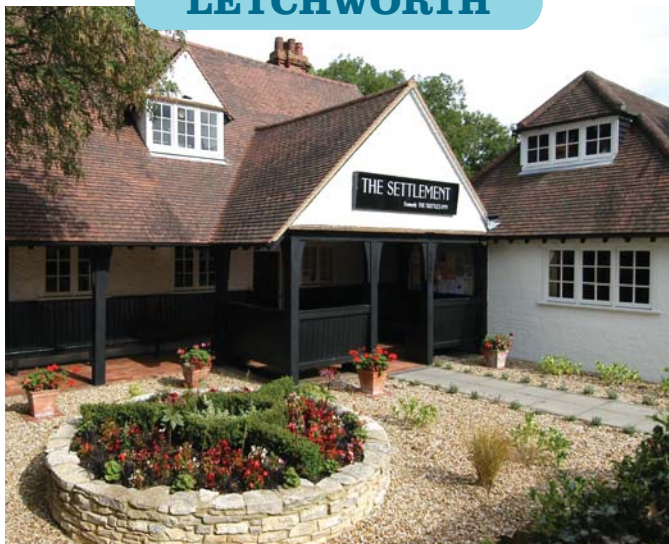
Learn and develop photo
editing skills. Every first
Thursday evening, from
January to July and
September to December.
Fearnhill School, Icknield Way.
[www.lalg.co.uk/
photoshopgroup](http://www.lalg.co.uk/photoshopgroup)
E: [michael.woodford1@
ntlworld.com](mailto:michael.woodford1@ntlworld.com)

Transition Town Letchworth

Understanding climate change
and peak oil. Every last
Tuesday, from January to July
and September to November.
Mrs Elizabeth Howard
Memorial Hall,
Norton Way South.
www.ttletchworth.org
T: 01462 671837

THE SETTLEMENT

LETCHWORTH



Recreation and education classes for adults.

- Arts and crafts
- Hobbies
- Fitness
- Languages
- Academic
- and much more

229 Nevells Road,
Letchworth Garden City.
www.leitchworthsettlement.org.uk
T: 01462 682828



Tom and Stuart
have been learning
First Aid with St John
for a combined
16 years.

St John Ambulance

First aid training. Every Monday evening, from January to July and September to November.

13 Lacre Way, Works Road.

www.sja.org.uk



WIN AN ANNUAL PASS TO BROADWAY CINEMA

Simply answer the question below, complete the form on the right of this page and return for your chance to win.

On which day of the week do St John Ambulance meet in Letchworth Garden City?

- a) Monday b) Tuesday c) Wednesday

Return your completed form to:

FREEPOST RSSB-UHEX-JXAK
Letchworth Garden City Heritage Foundation
Foundation House
Icknield Way
Letchworth Garden City
SG6 1GD

Terms and conditions

One lucky winner will be drawn at random, from all received by the closing date. Only one entry per person. The winner will be expected to participate in publicity and collect the prize from the Cinema. Employees or Governors of the Heritage Foundation are not permitted to enter. No cash alternatives.

More information about the prize

The pass will admit the competition winner to up to one showing per week at Broadway Cinema, Letchworth Garden City, valid for a year from the date of issue. The pass is non-transferable and will only be valid for redemption and use by the winner. Photographic identification will be required to verify your identity. Showings to any films we advertise as 'no free passes' will not be available as part of this offer. Redemption subject to ticket availability and only valid on presentation at Box Office. Offer subject to withdrawal without notice.

Promoter: Letchworth Garden City Heritage Foundation, SG6 1GD.

The answer is:

(please tick)

a) Monday b) Tuesday c) Wednesday

My details are:

Title

First name

Last name

Address

.....

.....

Town

Postcode Age

Mobile telephone

Email

I agree to the competition terms and conditions.

Signed: Date:

If you're under 18, please ask your parent or guardian to sign here:

.....

Please keep me updated about what's happening in Letchworth Garden City

(please tick)

By email By SMS to your mobile

Closing date for entries: 29 June 2012.



Cut along dotted line.

MEET NEW PEOPLE

Have fun



Friends
Make New
Meet New People
Meet
New
People
Socialise
Have
Fun

**Have
Fun**





26 Club

Social with guest speakers.
Meeting fortnightly on
Thursday morning.

The Settlement,
Nevells Road.

T: 01462 671690

galemicaform@sky.com

27 Club

Social for retired male
Letchworthians. Meeting
fortnightly, every Monday
morning, from January to July
and September to December.

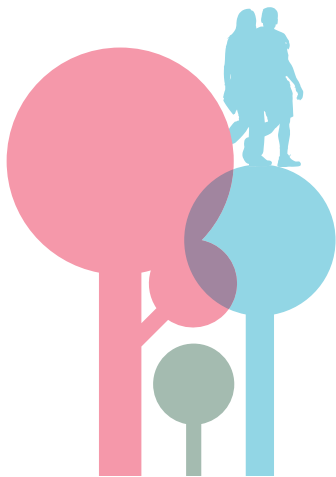
St George's Church Hall,
Clulow Room.

T: 01462 686772

71 Club

Social evenings. Every
Tuesday and Wednesday,
from May to July and
September to December.

T: 01438 871479





Two regulars tuck in
at Cheap as Chips.

Cheap as Chips Club

Lunch and friendship. Every
Wednesday and Thursday
lunchtime.

Brotherhood Hall,
Gernon Road.

E: sandilewis@fsmail.net

Methodist Homes Coffee Shop

Every Monday afternoon.

Trembaths, Talbot Way.

www.mha.org.uk

T: 01462 481694

Letchworth Museum & Art Gallery

Open Monday to Tuesday; Thursday to Saturday.

Broadway, Letchworth Garden City

www.north-herts.gov.uk

T: 01462 685647

LOOKING FOR...

a space to host your regular
meeting or special event?

Letchworth Arts Centre, 2 The Arcade

www.letchwortharts.org

T: 01462 670788

Letchworth Garden City Church, Icknield Way

www.mylgcc.com

T: 01462 480126

Mrs Elizabeth Howard Memorial Hall,

Norton Way South

www.howardhall.org.uk



BROADWAY

WWW.BROADWAY-CINEMA.COM

WWW.BROADWAY-CINEMA.COM

CINEMA

ADMIT ONE

ADMIT ONE

SHOWING THE LATEST BLOCKBUSTERS EVERY WEEK

Tickets £4.50*

for showings from Monday to Thursday
and Friday until 5pm. (3D £2 extra).*

Eastcheap,
Letchworth Garden City.

Book online

www.broadway-cinema.com

Box Office bookings
(3pm to 7.30pm daily)
01462 681088



Like us on Facebook



follow us on Twitter
[@broadwaycinemalgc](https://twitter.com/broadwaycinemalgc)

*Pricing subject to change.
Excludes bank holidays.

Funded and run by



**heritage
foundation**
Letchworth Garden City





First Garden City Ladies Group

Social with guest speakers. Every second Monday afternoon, from January to July and September to December.

The Settlement,
Nevels Road.

T: 01462 676068

Grandparent & Toddlers Group

Support for grandparents; play for children. Every Wednesday morning.

Mrs Elizabeth Howard
Memorial Hall,
Norton Way South.

T: 01462 686723

Hitchin PHAB

Supporting physically disabled and able bodied. Meet fortnightly on Friday evenings, from January to July and September to December.

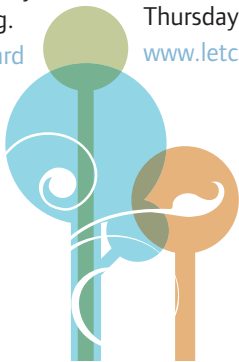
Westmill Community Centre,
John Barker Place.

www.hitchinphab.org.uk

Letchworth Ladies Circle

Socialising and fundraising for charities. Every first and third Thursday evening.

www.letchworthcircle.org.uk



Letchworth Winemakers

Socialising and tastings. Every first Tuesday, from January to July and September to December.

Mrs Elizabeth Howard
Memorial Hall,
Norton Way South.
T: 01462 676771

Meeting Point

Make friends over tea and coffee. Every Tuesday morning, from January to July and September to December.

Grange Baptist Church,
Danescroft.
T: 01462 632277

Monday Drop-In Club

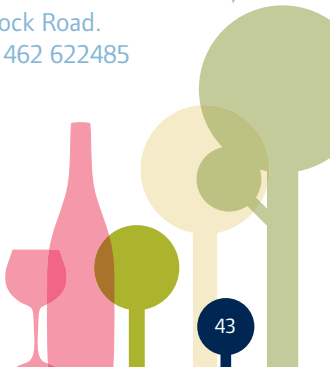
Friendship and activities for anyone anxious or lonely. Every Monday afternoon.

Central Methodist Church,
Pixmore Way.
T: 01462 671359
E: jean.aitchinson@virgin.net

Pembroke Retirement Club

Social, badminton and keep fit. Every Monday morning and afternoon.

North Herts Leisure Centre,
Baldock Road.
T: 01462 622485



Reynolds Day Centre

A break for carers. Every Monday, from January to July and September to December.

Reynolds Sheltered Housing,
Pelican Way.

T: 01462 670654

Royal Air Forces Association

Social with information and support. Every second Thursday evening.

Letchworth Conservative Club, Birds Hill.

T: 01462 671534

E: kwn056@btinternet.com

Royal British Legion

Information, welfare and social update. Every third Monday evening.

T: 01462 679123

E: sajescott@googlemail.com

Royal Naval Association

Social with information. Every second Monday evening.

Four Emblems, Station Road.

T: 01438 226811

E: beckydaniel_4@hotmail.com





Senior Friends of Plinston (Thursday) Club

Social activities.
Every Thursday morning.
Letchworth Free Church Hall,
Gernon Road.
T: 01462 684535

Slimming World

Every Thursday morning.
Central Methodist Church
Hall, Pixmore Way.
www.slimmingworld.com
T: 07950 492351



Social & Day Care

Fun, friendship and food for
over 50s. Every weekday.

Howard Garden Social
& Day Care Centre,
Norton Way South.
T: 01462 682524
E: [howard.gardens@
btconnect.com](mailto:howard.gardens@btconnect.com)

Yvonne Savage Club for Visually Impaired

Social and support with
lunch. Every second Tuesday
lunchtime.

T: 01462 637405
E: [muriellanderson@
ntlworld.com](mailto:muriellanderson@ntlworld.com)

GET ACTIVE



Fun

Keep Fit

Keep Fit

Fun

Fun

Play



Enjoy

Exercise

Play

Enjoy

Enjoy

EXERCISE

Exercise

Play





Letchworth Adult Swimming Club

Every Tuesday evening from January to July and September to December.

St Francis College, Broadway.
www.letchworthswimming.org.uk

T: 01462 894273

Letchworth Garden City Bowls Club

Every Tuesday, Wednesday, Friday, Saturday and Sunday during April to September.

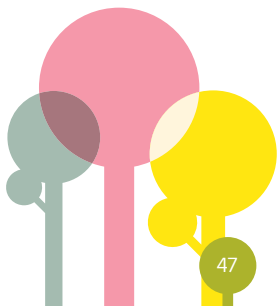
Norton Common Bowls Green, Icknield Way.
www.letchworthbowls.co.uk



Letchworth Garden City Cricket Club

Every Wednesday evening, Saturday and Sunday afternoon, from April to September.

Corner Sports Club, Whitethorn Lane.
www.letchworth.play-cricket.com
T: 01462 623613





Letchworth Garden City Rugby Club

Meeting Tuesday, Wednesday, Thursday, Saturday and Sunday. Four senior teams; colts team; junior-, mini- and girls-sections.

Legends Lane, Baldock Road.
www.letchworthrugby.com

T: 01462 682554

Letchworth Roller Hockey Club

Under 11s, under 13s and senior teams. Every Wednesday evening from January to July and September to December.

North Herts Leisure Centre,
Baldock Road.

www.lrhc.co.uk

Left - Two under 11s training with the Letchworth Roller Hockey Club.

Below - A match in action on one of the indoor courts at the Sports and Tennis Club.



Letchworth Sports & Tennis Club

Tennis, squash, badminton, fitness and croquet.

Muddy Lane, Letchworth Garden City.

www.lstc.org.uk

T: 01462 675444





North Herts Road Runners organise Letchworth Garden City's annual autumn road race, the Standalone 10k.

Letchworth Short Mat Bowls Club

Every Wednesday and Friday, from January to May and September to December.

Scout Hut, Sparhawke.
T: 01462 636490

North Herts Road Runners

Sociable running club.
Every Tuesday and Thursday evening.

www.nhrr.org.uk



Norton Bowling Club

Every Tuesday evening,
from April to September.

Norton Bowls Club,
behind Three Horseshoes,
Norton Road.

www.nortonbowls.co.uk

T: 01462 684139

Pole Position

Pole fitness classes.
Every Monday evening
and Saturday afternoon.

Letchworth Arts Centre,
2 The Arcade.

Text: 07946 300744

Pisces Swimming Club

Swimming for disabled.
Every Friday evening.

North Herts Leisure Centre,
Baldock Road.

T: 01462 671073

E: annaplee@hotmail.com





Redhoods Badminton Club

Every Friday evening.

Fearnhill Sports
Centre, Icknield Way.

E: glew@ntlworld.com

St Paul's Women's Badminton Club

Every Tuesday morning and
Thursday, from January to
May and September
to December.

St Paul's Church Hall,
Pixmore Way.

T: 01462 432118

Willian Bowls Club

Every Tuesday afternoon,
from May to September.

Norton Common,
Icknield Way.

T: 01462 632350



The beautiful ballroom of the town's former corset and swimwear factory.

LOOKING FOR...

a unique and prestigious place to host a special occasion, wedding or awards evening?

Take a look around the Spirella Ballroom.

The Spirella Building, Bridge Road.

www.spirellaballroom.com

T: 01462 650136

Funded and run by



**heritage
foundation**

Letchworth Garden City



EXPLORE THE COUNTRYSIDE



Discover
Discover

Nature

Nature

Discover

Nature

Ramble

Ramble



Ramble

Gardening

Gardening

Gardening



The Friends of Norton Common hard at work; planting trees, clearing and replenishing.

Gardens for all

Visiting gardens and welcoming speakers. Meeting monthly on Tuesday mornings.

T: 01462 484030

The Friends of Norton Common

Tidying, conserving and renewing.

Every first Thursday.

Bowls Club car park, Norton Common, Icknield Way.

www.friendsofnortoncommon.info

Health Walks

Led walks, helping to get people outdoors and active.

Every Monday, Tuesday, Wednesday and Saturday.

www.hertsdirect.org/healthwalks

T: 01462 459395





Letchworth Garden City's 13.6 mile country trail

Enjoy a gentle stroll or an energetic cycle ride around the Garden City Greenway; with parks, meadows, woodland and much more.

Plan your route at www.greenway.org.uk

Pick up a map at: Local & Tourist Information Centre,
33-35 Station Road, Letchworth Garden City.

Maintained and managed by



**heritage
foundation**
Letchworth Garden City



The Garden City Greenway,
captured by David Moul.

Letchworth Natural History Society

Discovering natural history.
Presentations on second
Tuesdays, at The Settlement,
Nevell's Road. Walks on first
Sundays, plus weekly rambles
in summer.

T: 01462 632171

Letchworth & District Gardeners' Association

Everything gardening and
allotments. Every third
Thursday evening, from
January to November.

Central Methodist Church
Hall, Pixmore Way.
www.ldga.org.uk

Settlement Gardening Club

Sharing tips, swapping plants
and learning from talks.
Every fourth Tuesday evening,
from January to June and
September to December.

The Settlement, Nevell's Road.
T: 01462 685511





In September 2011, over 300 people enjoyed behind the scenes tours of Broadway Cinema.

Find out more about what's happening in Letchworth Garden City



Bookmark www.letchworthgc.com/whats-on



Follow @Letchworth_TIC on Twitter



Sign-up for our email newsletter at www.letchworth.com/whats_on_email



Read the Letchworth Garden City Town and Around column in The Comet newspaper



Call in at the Local & Tourist Information Centre, 33-35 Station Road.



Check the Community Directory on www.hertsdirect.org



Last July 2011, the town came alive with summer festival 'Who do you think you are Letchworth?'

Local & Tourist Information Centre

Your destination for local event listings and information.

33-35 Station Road,
Letchworth Garden City.
www.lethworthgc.com
T: 01462 487868



Funded and run by



**heritage
foundation**

Letchworth Garden City

Tell us what you think of our guide...

- 1. This guide is helpful and creates awareness of what's happening in Letchworth Garden City.** (please circle)

Agree
Strongly

Agree

Neutral

Disagree

Disagree
Strongly

- 2. This guide has made me want to try out something new in Letchworth Garden City.** (please circle)

Agree
Strongly

Agree

Neutral

Disagree

Disagree
Strongly

- 3. This guide could be improved for 2013 by:**

.....

.....

.....

.....

Return your completed form to:

FREEPOST RSSB-UHEX-JXAK

Letchworth Garden City Heritage Foundation
Foundation House, Icknield Way,
Letchworth Garden City, SG6 1GD

GET LISTED!

.....
**Get your group or club listed in our
next Community Guide**

Complete our form online at
www.letchworth.com/entry_form
or call **01462 476678** for a printed copy.



About this Community Guide

We've made every effort to try and ensure the accuracy of this guide. However, please double check with the group or club before making your journey.

Much of the information included has been submitted by the clubs and groups featured, during November 2011. We cannot be held responsible for any errors or omissions or mistakes.

No prior checks or assurances about the featured groups and clubs can be made.

We SUPPORT LOCAL ACTIVITIES as part of our **charitable commitments to Letchworth's communities.**



This guide is designed to encourage social, educational and charitable activities throughout the Garden City and help clubs, groups and organisations promote themselves to residents and visitors to the town. It also features our own leisure facilities which we fund and run:

- **Broadway Cinema**
- **Garden City Greenway**
- **Heritage Museum**
- **Local & Tourist Information Centre**
- **Spirella Ballroom**
- **Standalone Farm**

www.letchworth.com

or telephone **01462 476007**



NEED FUNDING

**FOR AN INDIVIDUAL OR
COMMUNITY PROJECT?**



If you live or are based in Letchworth Garden City, a community grant may be available to you.

- Charity work
- Learn new skills
- Events
- Trips
- Sports
- Community clubs

**GET IN TOUCH TO SEE
HOW WE CAN HELP**

T: 01462 476037

E: grants@letchworth.com



**heritage
foundation**
Letchworth Garden City

**SEE
INSIDE
FOR:**

Over **100** things
to see and try

More than **80**
clubs or groups

Across **7** days
of the week

In the world's **1st**
Garden City



heritage
foundation

Letchworth Garden City

I've been printed on FSC mixed source paper, by FSC certificate holder TT-COC-002414. Please recycle me when you're done.

2012