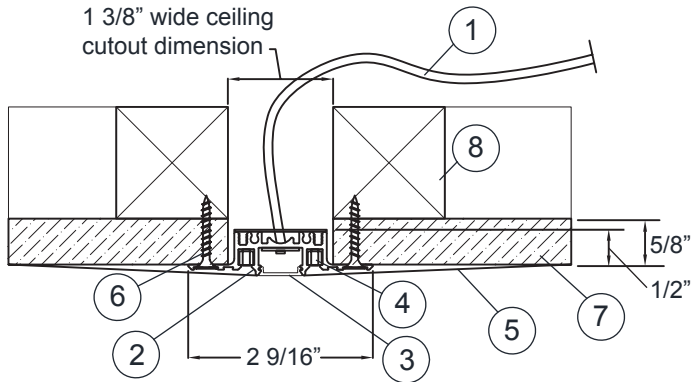
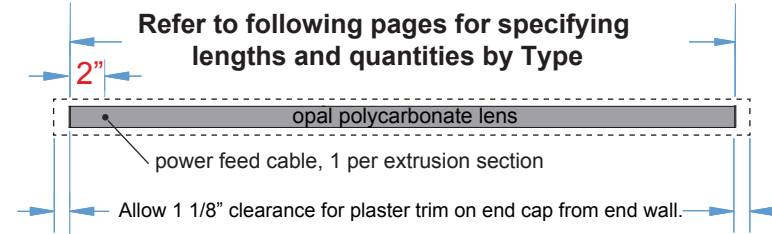
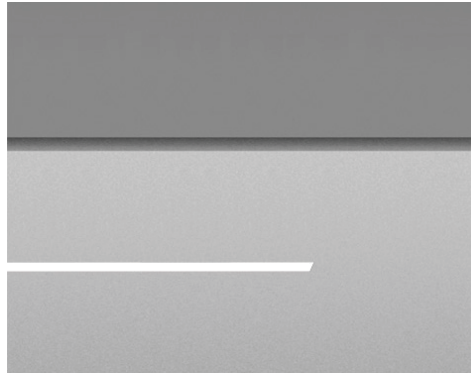


Project Name:	
Fixture Type:	
Distributor:	
Dist PO:	Inter-lux SO#:



Typical Section Detail

1. Cable feed (hardwired), 18/2, Class 2 plenum rated cable supplied (4ft length standard)
2. P20 extrusion section with integral LED strip and end caps.
3. White acrylic diffuser
4. Connector, for joining extrusion section within same linear run.
5. Tapered plaster joint
6. Drywall screw (by others)
7. 5/8" Drywall ceiling (by others)
8. Blocking (by others)



Notes:

Extrusion Sections Lengths:
 Non-dimming and 0-10V dimming (96" maximum length)
 Lutron dimming (60" maximum length)

<input type="checkbox"/>	Approved
<input type="checkbox"/>	Approved with corrections noted
<input type="checkbox"/>	Revise and Resubmit
Check one box above, sign and date	
<hr/>	
Signature	Date

product specification

WG-P20LDL

Following Pages

model	type	length	LED lamping	voltage	power supply	option
-------	------	--------	-------------	---------	--------------	--------

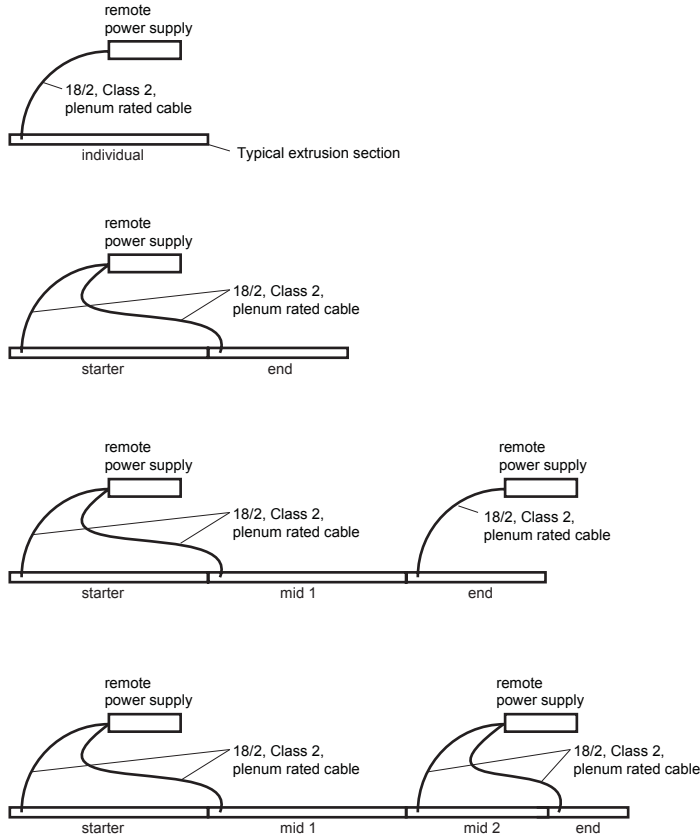
ordering information - ALL FIELDS REQUIRED FOR PRODUCTION

model	type	length	LED lamping	voltage	power supply	option
WG-P20LDL Whitegoods recessed mount 20mm profile linear downlight	- S1 linear - S2 'L' shape - S3 'U' shape - S4 square / rectangle	- Individual lengths as noted - To specify a continuous length, indicate overall length of a straight run to nearest 1/8". Refer to following pages for additional information specifying lengths	- LH27 (2700K, 547 lm/ft) - LH30 (3000K, 588 lm/ft) - LH35 (3500K, 606 lm/ft) - LH40 (4000K, 629 lm/ft) *7.2W/ft, 24V constant voltage LED 3000K standard (consult factory * for lead time for other color temperatures)	- UNV (120V -277V)	- S (no dimming) STANDARD - D010 (0-10V dimming, UNV) - D3W (1% Lutron 3-wire dimming, UNV) - DES (1% Lutron Ecosystem digital, UNV)	- C10 10' cable* - C20 20' cable* - C30 30' cable* *Provided with 18/2 plenum-rated cable, specify length note: 4ft length provided standard
				- 120V		

Project Name:	
Fixture Type:	
Distributor:	
Dist PO:	Inter-lux SO# :

Non-Dimming and 0-10V Dimming Systems:

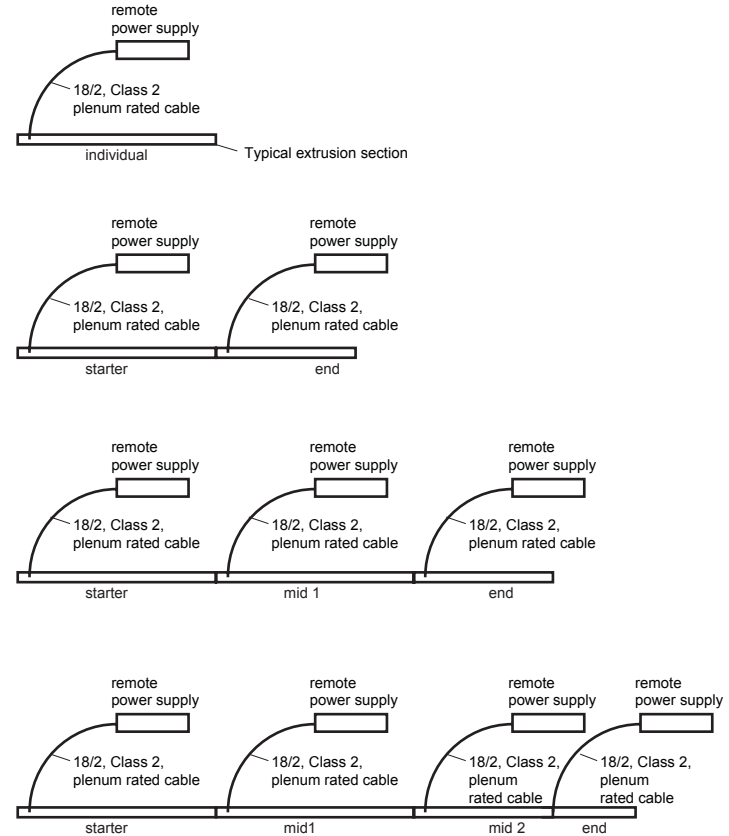
1. 96" maximum extrusion length.
2. 96W, 24V, constant voltage power supply (12ft max. length per driver)



Typical Non-Dim or 0-10V Dimming Systems

Lutron Dimming Systems:

1. 60" maximum extrusion length.
2. 40W, 24V, constant voltage power supply (5ft max. length per driver)

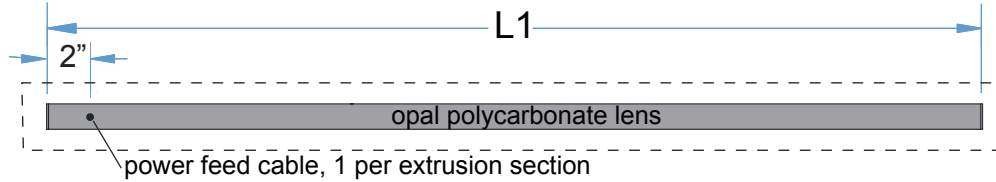


Typical Lutron Systems

General Notes for all system types:

1. Individual fixtures supplied with end cap at each end.
2. Starter and End extrusion section supplied with end cap at one end.
3. Starters and Mid 1 extrusion sections are supplied with maximum lengths for long linear systems.
4. End extrusion sections have custom tailored length between 12" - 96" to obtain the overall system length.
5. When an End is calculated to be less than 12", a Mid 2 extrusion added to the system to split the length into manageable sizes.
6. Class 2, plenum rated cable supplied hardwired to extrusion section, 4 ft length standard. Longer lengths available (specify when ordering)

Project Name:	
Fixture Type:	
Distributor:	
Dist PO:	Inter-lux SO# :



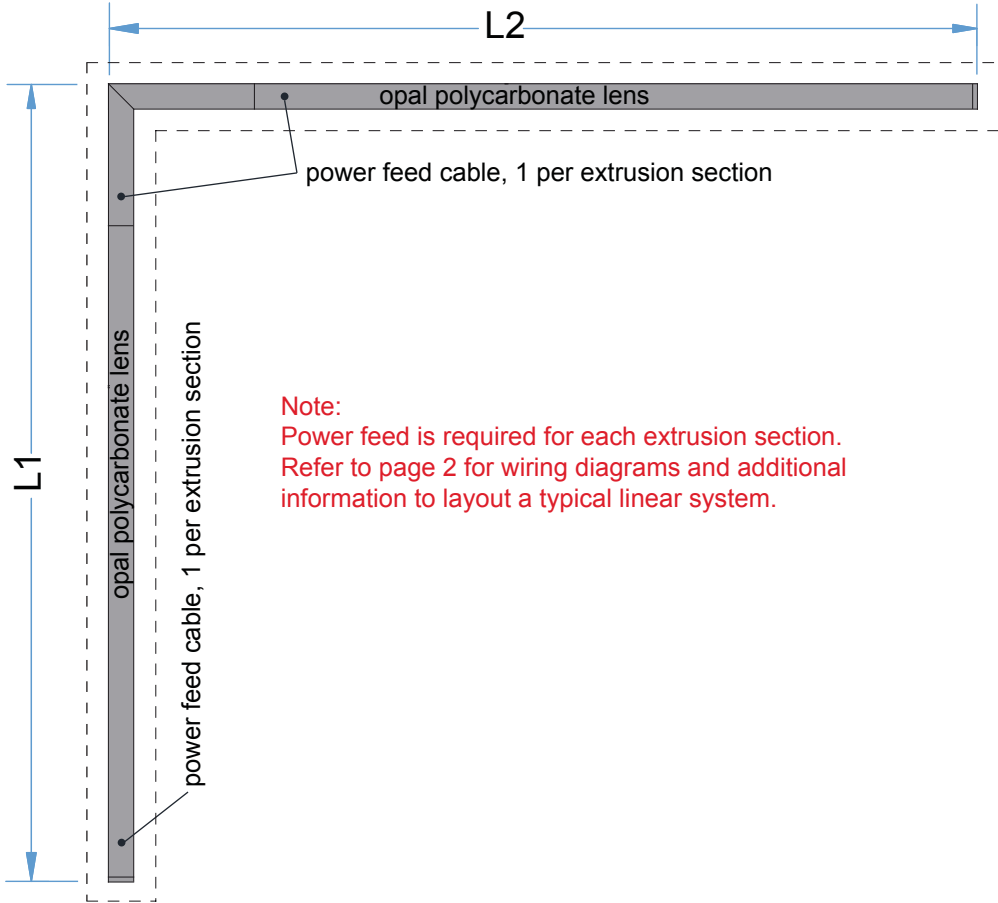
Note:
Power feed is required for each extrusion section.
Refer to page 2 for wiring diagrams and additional information to layout a typical linear system.

System	Qty.	L1
A	_____	_____
B	_____	_____
C	_____	_____
D	_____	_____
E	_____	_____
F	_____	_____
G	_____	_____
H	_____	_____

<input type="checkbox"/>	Approved
<input type="checkbox"/>	Approved with corrections noted
<input type="checkbox"/>	Revise and Resubmit
Check one box above, sign and date	

Signature	Date

Project Name:	
Fixture Type:	
Distributor:	
Dist PO:	Inter-lux SO# :



Note:
 Power feed is required for each extrusion section.
 Refer to page 2 for wiring diagrams and additional information to layout a typical linear system.

System	Qty.	L1	L2
A	_____	_____	_____
B	_____	_____	_____
C	_____	_____	_____
D	_____	_____	_____
E	_____	_____	_____
F	_____	_____	_____
G	_____	_____	_____
H	_____	_____	_____

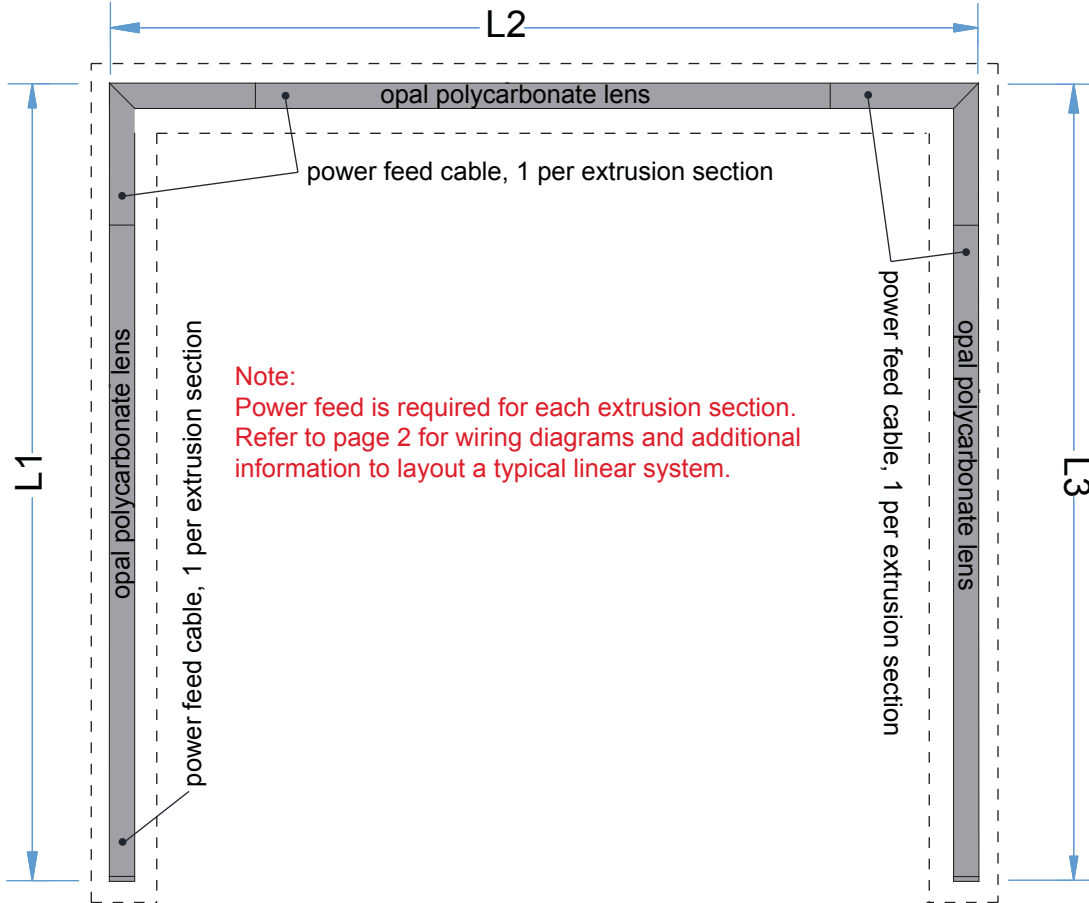
- Approved
- Approved with corrections noted
- Revise and Resubmit

Check one box above, sign and date

 Signature

 Date

Project Name:	
Fixture Type:	
Distributor:	
Dist PO:	Inter-lux SO# :



Note:
Power feed is required for each extrusion section.
Refer to page 2 for wiring diagrams and additional information to layout a typical linear system.

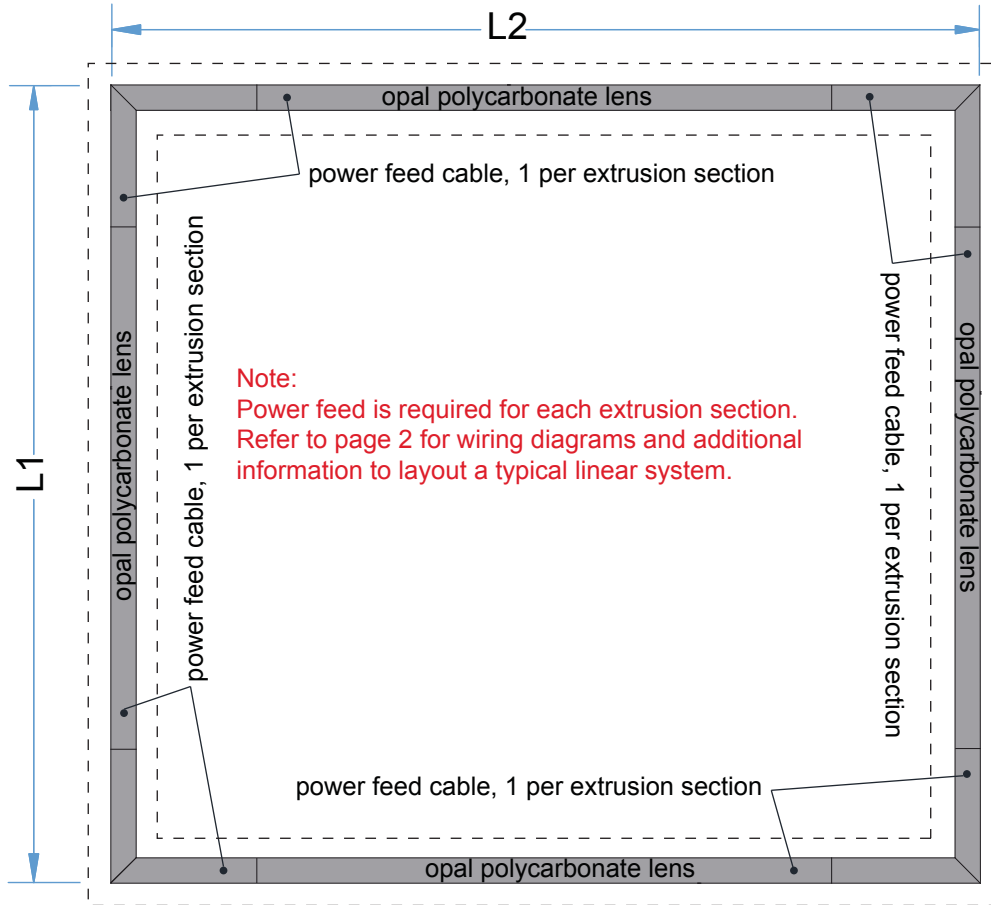
System	Qty.	L1	L2	L3
A	_____	_____	_____	_____
B	_____	_____	_____	_____
C	_____	_____	_____	_____
D	_____	_____	_____	_____
E	_____	_____	_____	_____
F	_____	_____	_____	_____
G	_____	_____	_____	_____
H	_____	_____	_____	_____

Approved
 Approved with corrections noted
 Revise and Resubmit

Check one box above, sign and date

Signature
Date

Project Name:	
Fixture Type:	
Distributor:	
Dist PO:	Inter-lux SO# :



System	Qty.	L1	L2
A	_____	_____	_____
B	_____	_____	_____
C	_____	_____	_____
D	_____	_____	_____
E	_____	_____	_____
F	_____	_____	_____
G	_____	_____	_____
H	_____	_____	_____

Approved
 Approved with corrections noted
 Revise and Resubmit

Check one box above, sign and date

Signature Date