

Amherst Early Music Festival 2015

at Connecticut College, New London CT

Music of Italy and Spain

Directed by Frances Blaker

July 5-12, and 12-19, 2015



Largest recorder program in US

Renaissance reeds and brass

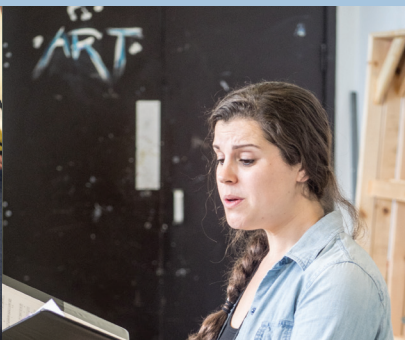
Lute Society of America Seminar

New London Assembly

Festival Concert Series

Viol Excelsior

NEW! Choral Workshop



Amherst Early Music 2015 Festival

Week 1 - July 5-12

Voice, recorder, viol, violin,
cello, Renaissance reeds, flute, oboe,
bassoon, harpsichord, historical dance,
early notation

Special Auditioned Programs (see website)

Baroque Academy & Opera
Choral Workshop
Recorder Boot Camp

Week 2 - July 12-19

Voice, recorder, viol, flute, frame
drum, English country dance,
Renaissance brass and reeds,
harpsichord, early notation

Special Auditioned Programs (see website)

Ensemble Singing Intensive
Virtuoso Recorder
Recorder Seminar

Recorder

Letitia Berlin
Frances Blaker
Saskia Coolen
Héloïse Degrugillier*
Eric Haas*
Valerie Horst
Na'ama Lion
Patricia Petersen
Wendy Powers
Gwyn Roberts
Nina Stern**
Jennifer Streeter
Anne Timberlake**
Reine-Marie Verhagen
Tom Zajac*

Early Notation

Valerie Horst
Karen Cook**
Carol Marsh**
Patricia Petersen

Renaissance Reeds

Marilyn Boenau
Debra Nagy*
Daniel Stillman**
Wouter Verschuren

Cornetto**

Bruce Dickey**

Sackbut**

Ross Brownlee**
Erik Schmalz**

Viol and Vielle

Nathan Bontrager
Julie Elhard**
Shira Kammen**
Loren Ludwig
Carol Marsh**
Paolo Pandolfo*
John Mark Rozendaal**
Lisa Terry*

Baroque Violin

Peter Lekx
Aisslinn Nosky*

Baroque Cello*

Sarah Freiberg*

Harpsichord

John Bailey
Kathryn Cok**
Arthur Haas*
Jennifer Streeter
Peter Sykes*

Lute

Eduardo Eguez**
Grant Herreid
Christopher Morrongiello**
Nigel North**
Jason Priset
Richard Stone*

Baroque Flute

Wilbert Hazelzet*
Na'ama Lion

Baroque Oboe*

Debra Nagy*

Baroque Bassoon*

Wouter Verschuren

Percussion**

Glen Velez**

Voice and Theater

Julianne Baird
Emily Eagen
Andrew Fuchs*
Christopher Herbert*
Grant Herreid
Danny Johnson
Temmo Korisheli
Anna Lenti*
Kevin Mallon*
Drew Minter*
Marty Morell*
Craig Phillips**
Lawrence Rosenwald
Geoffrey Williams
Steven Wilson*

Historical Dance*

Kaspar D. Mainz*
Dorothy Olsson*

New London Assembly**

Karen Axelrod**
Graham Christian**
Brad Foster**
Shira Kammen**
Anna Patton**
Andrew Shaw**

*Week One Only **Week Two Only

Central Program

The Central Program is our largest and most flexible program, and includes most early instruments, voice, and historical dance. Choose from a wide array of classes for four class periods. Play in a consort, sing music by a favorite composer, read from early notation, dance a minuet, or begin a new instrument. Questions? Call us at (781)488-3337. Check www.amherstearlymusic.org for a full list of classes in May.

New to the Festival? Fear not! Our open and inviting atmosphere will make you feel at home right away.

Recorder

Recorder consorts, a wide variety of Medieval, Renaissance and Baroque topic classes, master class with Reine-Marie Verhagen, recorder technique, early notation. Baroque orchestra* with Gwyn Roberts plays *Concerti con molti strumenti*: music of Vivaldi and others. Second week, Percussion and Recorders without Borders with Glen Velez and Nina Stern.

Viol

Week one: Paolo Pandolfo master class, technique class, advanced consort. Viol consorts all day, late evening drop-in sessions.

Week two: Viol Excelsior: take your playing to the next level in classes that will delight you musically and stretch you technically.

Reeds and Brass

Shawm band with Debra Nagy, crumhorn consort, cornet and sackbut ensemble, mixed reeds and brass. Repertoire includes music from Lerma and AEM's new edition of the Regensburg part books. Reed making with Wouter Verschuren.

Voice

Technique, "A Mode a Day" with Pamela Dellal, consorts for voices and instruments, Italian motets and madrigals, "The Celestial Lyre", and more.

Lute

The Lute Society of America Seminar, directed by Jason Priset, features technique class, master class, a course on ground basses, and "The Celestial Lyre," a lute song project directed by Grant Herreid.

Harpsichord

Master classes, topic classes, continuo coaching, Baroque ensembles.

Baroque oboe, flute, bassoon

Week one master classes open to Baroque Academy and Central Program students. Oboe band with Wouter Verschuren. Flute ensembles and Baroque ensembles.

Music teachers:

Learn new repertoire, expand your teaching tools, and receive documentation for CEU's from your school system. Scholarship available.

The **All-Workshop Collegium** brings everyone together to perform choral masterpieces.

Week one: Grant Herreid directs music of Mantua: Gastoldi, Rossi, Wert, Monteverdi.

Week two: Ross Brownlee directs Monteverdi's *Messa a 4 voci*.

Schedule: Classes run Monday through Friday.

Evenings: lectures, concerts, madrigal singing in the courtyard, English country dancing, drop-in playing sessions, and the AEM Auction.

Saturday: rehearsals and concerts.



Special Programs

Choral Workshop*

NEW! **Kent Tritle** conducts a program of Palestrina, Guerrero, and Monteverdi. Section leaders include members of New York Polyphony. Rehearsals all morning and early afternoon. Late afternoon take Central Program classes. Participation by permission of conductor: send a list of choral music you've sung in the past 2 years to director@amherstearlymusic.org. Program limited to 40. Apply early!



Percussion & Recorders Without Borders**

Nina Stern, recorder, and **Glen Velez**, frame drum

Study melody through rhythm and rhythm through melody. Examine repertoires that include traditional music from the Middle East, Eastern Europe, and Western Asia, as well as Medieval and Renaissance dance music. Classes offer enrichment and growth opportunities for all levels of percussionists, recorder and wind players, viol, vielle, and others.



English Country Dance Program: New London Assembly**

Faculty: Brad Foster (director), Graham Christian, and Andrew Shaw

Musicians: Shira Kammen, violin; Anna Patton, clarinet; Karen Axelrod, piano

An all-day program of classes, lectures, and evening dancing. Learn traditional English country dances and learn about the 17th-century country dances they inspired. You can also take a music class if you wish.



Special Project: The Celestial Lyre of Orpheus**

Directed by **Grant Herreid**

Songs and instrumental pieces, running the gamut of 15th and 16th-century styles, invoke the seven-stringed celestial lyre of Ficino and Gaffurius in each of the modes, accompanied by beautiful images of the planets and Muses from the Mantegna Tarocchi (c. 1500). Lutes, viols, winds, and percussion will resonate in imitation of the Harmony of the Spheres. Late afternoon rehearsals for Friday evening performance. For voices, lutes, recorders, and viols. A=440



Amherst Early Music Festival Concerts

All concerts at 7:30 in Evans Concert Hall, unless otherwise noted. Join us for pre-concert madrigals in the courtyard and post-concert receptions.

Tuesday, July 7

L'Aria del Gran Duca A fabulous solo recital by Paolo Pandolfo, world-renowned virtuoso of the viol. Works by Abel, J.S. Bach, Marais, De Machy, D. Ortiz/Pandolfo, and Hume.

Thursday, July 9

Il Giorno Felice Italian Baroque music performed by the Amherst Baroque Soloists, including Julianne Baird, soprano; Aisslinn Nosky, violin; Saskia Coolen and Reine-Marie Verhagen, recorder; Wilbert Hazelzet, flute; Debra Nagy, oboe; Wouter Verschuren, bassoon; Sarah Freiberg, cello; Richard Stone, lute; Arthur Haas and Peter Sykes, harpsichord.

Friday, July 10 at 8:00 p.m.

Baroque Opera: George Frideric Handel's *Il pastor fido* (1734)

Lovesick shepherds of ancient Arcadian Greece are featured in this pastoral opera seria, based on the epic 16th-century poem by Guarini. Staged, with AEMF student singers, dancers, and orchestra. Drew Minter, director; Kevin Mallon, music director; Dorothy Olsson and Kaspar D. Mainz, dance directors; Ronnie Snader, costumes; and Lawrence Rosenwald, texts.

July 11-12 Music & Instrument Exhibition (in Crozier, free)

Instrument makers and dealers, music publishers, and organizations.

Saturday, July 11 Student Concerts (in Crozier, free)

11:15 a.m. **Recorder Boot Camp**; 1:00 p.m. **Baroque Academy**; 2:30 p.m. **Central Program**
4:30 p.m. **Choral Workshop** (in Cummings, free)

Saturday, July 11 Amherst Early Music Faculty Concert I

Hear many top early music performers in one evening. Expect the unexpected! Medieval to Baroque Italian and Spanish music, followed by the Workshop Collegium, directed by Grant Herreid, performing music of Gastoldi, Rossi, Wert, and Monteverdi.

Monday, July 13

Palestrina's *Missa Papae Marcelli* New York Polyphony, the Grammy-nominated men's vocal quartet, expands to six voices to present Palestrina's famous Mass for the Council of Trent, as well as Victoria's motet *O quam gloriosum*.

Thursday, July 16

From Bassano to Corelli: Three Centuries of the Recorder in Italy The flauto dolce in diminutions and ricercatas, virtuosic early 17th c. canzonas, and Baroque sonatas. Directed by Reine-Marie Verhagen, with Festival faculty.

Friday, July 17

The Celestial Lyre of Orpheus Delightful songs and instrumental pieces running the gamut of 15th and 16th-century styles. Singers, lutes, viols, winds, and percussion will resonate in imitation of the Harmony of the Spheres. Semi-staged, with faculty and student singers and lutenists. Directed by Grant Herreid.

Saturday, July 18 Student Concerts (in Crozier, free)

1:00 p.m. **Virtuoso Recorder and Recorder Seminar**; 2:30 p.m. **Central Program**
4:30 p.m. **Ensemble Singing Intensive**

Saturday, July 18 Amherst Early Music Faculty Concert II

Hear many top early music performers in one evening. Expect the unexpected! Medieval to Baroque Italian and Spanish music, performed by AEMF faculty, followed by the Workshop Collegium, directed by Ross Brownlee, performing Monteverdi's 1650 *Messa a 4 voci*.

Logistics

Connecticut College

The beautiful campus of Connecticut College, in New London, Connecticut, has dramatic views of Long Island Sound and a 750-acre arboretum. The College has comfortable dorms, an excellent concert hall, air-conditioned classrooms, easy parking, and a student center with a college store, snack bar, and post office. Beaches, nature preserves, Mystic Seaport, coffeehouses, and bookstores are a short drive away. See www.conncoll.edu.

Travel

Connecticut College is 60 miles from Providence, RI, off of I-95 in southeastern Connecticut. Amtrak trains and Greyhound Bus go to downtown New London, just 2 miles from campus. Newark Airport and Boston's Logan Airport have good connections to Amtrak. The closest airport is Providence, RI (PVD). Van service to the college will leave PVD at 2:00 pm and 5 pm both Sundays and return at 8:00 am the following Sundays; Price \$50.

Tuition

Attend full time both weeks and save \$100!
Central Program: \$570 per week
Dance Program \$540 per week
Half-day tuition: \$360 per week
Special Auditioned Program Tuition \$620 per week
Registration Fee \$30 Waived before March 31 with deposit or full tuition. Waived before May 1 with full tuition. Registration fee of \$30 is required to submit audition materials for Special Programs and is non-refundable.

Scholarships and Work-Study

Some AEM scholarships are available; see website. Scholarships are also offered by Country Dance and Song Society, Early Music America, American Recorder Society, Historical Keyboard Society of North America, Lute Society of America, and Viola da Gamba Society.

Cancellation Policy

Tuition is fully refundable before June 9, all but \$100 before June 29 (July 6 for second week). No refunds on tuition after June 29 (July 6 for second week). Housing is fully refundable.

Room and Board Single or double in the air-conditioned dorms is \$385 per person per week, with linens. Single or double in the non a/c dorms is \$185 per person per week, no linens. Single or double in the non a/c dorms is \$220 with linens. All rooms have shared baths. A meal card for the week is \$175. Individual meal prices are \$5.50 breakfast, \$8.50 lunch, and \$13.50 dinner. If you will arrive early, stay late, or have a guest, please reserve additional nights on our website.

Application

Apply on our website, or fill out the application form and mail to:

Amherst Early Music, Inc.

PO Box 229, Arlington MA 02476
info@amherstearlymusic.org 781-488-3337
Amherst Early Music 2015 Festival



Amherst Early Music 2015 Festival

name

address

city, state, zip code

()

phone: preferred

()

alternate

email address

Principal instrument or voice: _____ range: (viol and voice) _____

Second instrument or voice: _____ range: (viol and voice) _____

Note here if you will be coming solely or primarily to take a particular class or program, or to study with a particular faculty member:

I would like to apply to:

Central Program 1st Week ____ 2nd Week ____ Both Weeks ____

Fees: Read the Tuition & Registration Fee sections before filling this out!

All applications must include minimum tuition deposit.

Enclosed is my:

\$ ____ Tuition deposit (\$100 per week)

\$ ____ Tuition for Central Program (\$570 full-time/ \$360 half-day/ \$540 dance)

\$ ____ Registration fee of \$30 (if applicable)

\$ ____ \$30 commuter fee (if not staying at the College)

\$ ____ Contribution

\$ ____ **TOTAL** I would like to apply for work-study aid. ____

Mail to:

Amherst Early Music, PO Box 229, Arlington MA 02476

Tel: 781- 488-3337 **Email:** info@amherstearlymusic.org

Amherst Early Music, Inc.
Marilyn Boenau, Executive Director
PO Box 229
Arlington, MA 02476
www.amherstearlymusic.org

Non-Profit Org.
U.S. Postage
PAID
Brockton, MA
Permit No. 1000

Welcome to the Amherst Early Music Festival 2015!



Join Us!