

## 2207 Sway Bar Installation Instructions

Thank you for your purchase of this Hotchkis Performance product. Your stabilizer bar set was designed with the performance and durability you've come to expect from Hotchkis Performance.

### Front Bar Installation Notes:

- 1F. Look at the current bar installation and note the position of the anti-sway bar.
- 2F. Support the vehicle on jack stands, and remove the front wheels.



- 3F. Loosen, but do not remove the front bushing bolts.
- 4F. Remove the end links from the sway bar and lower control arms.
- 5F. Take the bolts out of the frame brackets and remove the stock sway bar from the vehicle. You will have to twist the bar out through the wheel well.

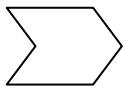


- 6F. Using the included white silicon grease, lube the inside of the new 1 ¼" front bushings. NOTE: the grease can be cleaned up with WD-40

- 7F. Install the bushing on the new Hotchkis bar. Make sure the split on the bushing faces the front when the bar is installed in the vehicle. Look at the placement of the original stock bushings on the stock bar for guidance.
- 8F. Place the greasable bracket over top the bushing.
- 9F. Put the new bar assembly into the vehicle and start the frame bolts. Do not tighten the frame bolts completely, only start enough threads to hold the bar in place while your work on the end links.
- 10F. Install the new end links and tighten them till the bushings are squeezed just enough that their diameter is just larger than the supporting washer.
- 11F. Tighten the frame bracket bolts.



Rear Bar Installation Notes:

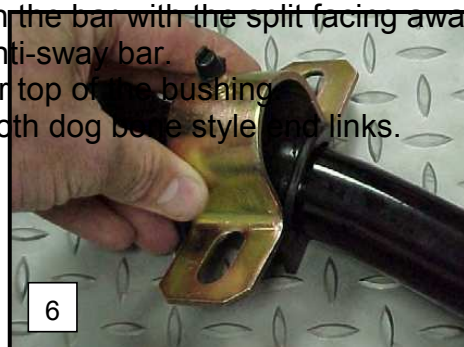


NOTE: The installation of your rear bar WILL require the removal of the rear seats.

1. Remove the lower rear seat cushion. If the cushion won't pull up easily, use a long screwdriver to push and release the small bar that is clipped in the bracket.
2. Remove the two bolts that hold the back part of the seat to the body and lift the upper cushion to remove it from the vehicle.



3. Jack up the vehicle and properly support with jack stands or lift jacks. Make sure the rear end is supported with the vehicle's load on the leaf springs. This is to ensure you install the rear bar in the proper position.
4. Take the 7/8" bushings and grease the ID with the included white silicon grease.

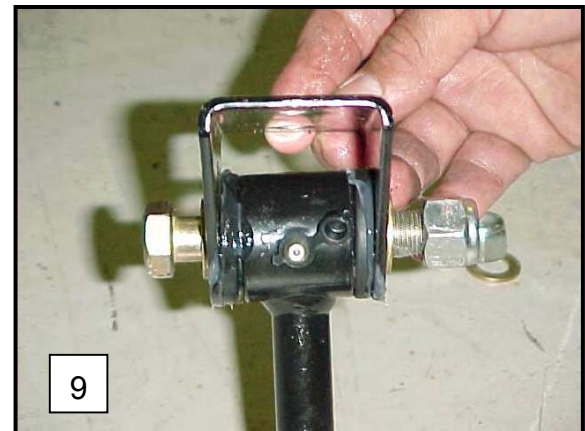


5. Install the bushings on the bar with the split facing away from the legs of the anti-sway bar.
6. Place the bracket over top of the bushing.
7. Grease the sides of both dog bone style end links.

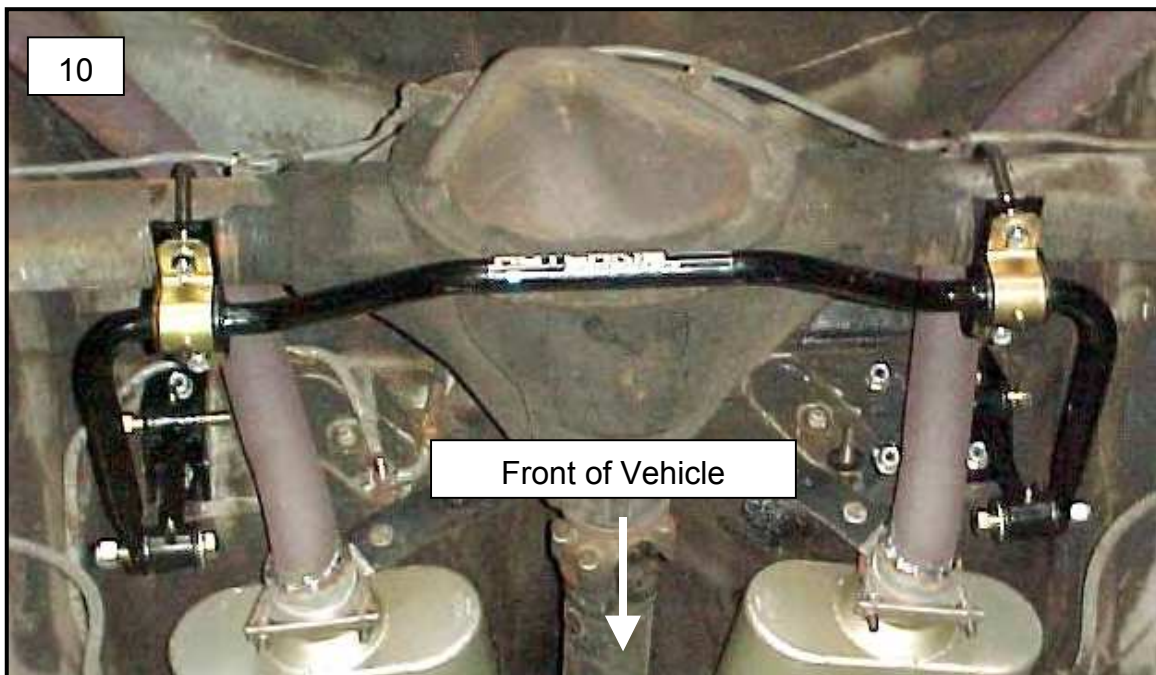
8. Using the T1712 Hardware kit, take the longer (3") bolts and attach the dog bone end link to the bar on the INSIDE of the bar. There are two different washer types included in the bolt kit, use the large diameter washer up against the dog bone, and the small one against the sway bar. Tighten the bolt to the point where you can just rotate the end link on the bolt. On the other end of the dog bone, install the triangular frame brackets using the shorter (2.75") bolt. Use a small washer on each side of the bracket.



9. This is a crucial step. Take the assembled bar assembly and hold it up under the rear end of the car. The arms will point forward and the dog bone end links point up. Roughly center the bar, positioning the triangular brackets just outside the lower seat mount. This is an area of the floor pan just inside of the frame rail on the vertical part of the rear floor pan. You will see sort of a 'bump' in the sheet metal. Check for exhaust clearance in this area. You may have to have the exhaust pipes rebent to provide clearance for the new sway bar assembly. Any competent exhaust shop can handle this modification easily.

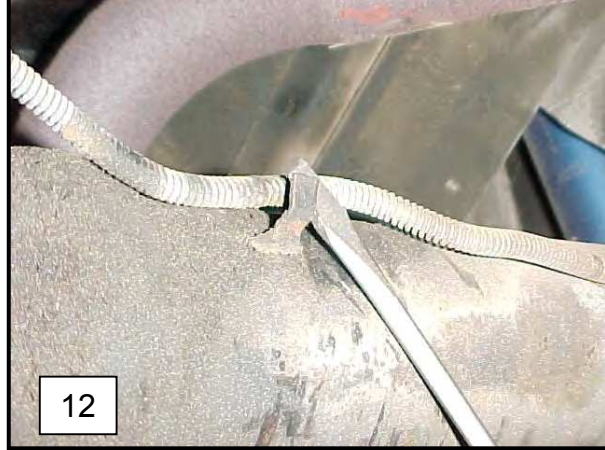


10. After you determine there's enough clearance for the bar, note the approximate location of the sway bar axle bushing.

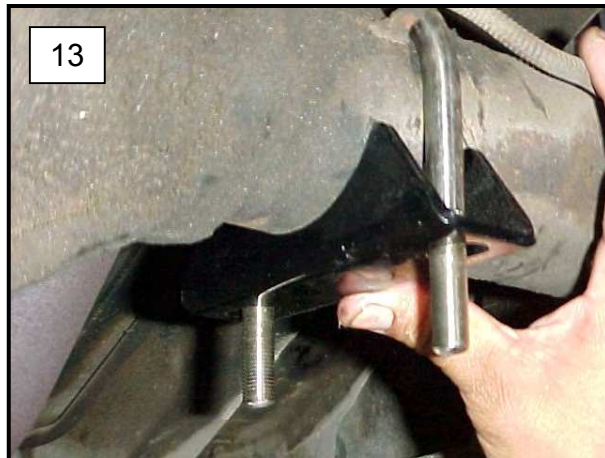


11. Take a screwdriver and carefully pry up the brake line to allow the U-Bolt to drop down over the axle. (See Image 12)

12. Install the U-Bolts on the axle and slip the axle bracket over the U-Bolt on the bottom side of the axle. Use masking or duct tape to secure them.



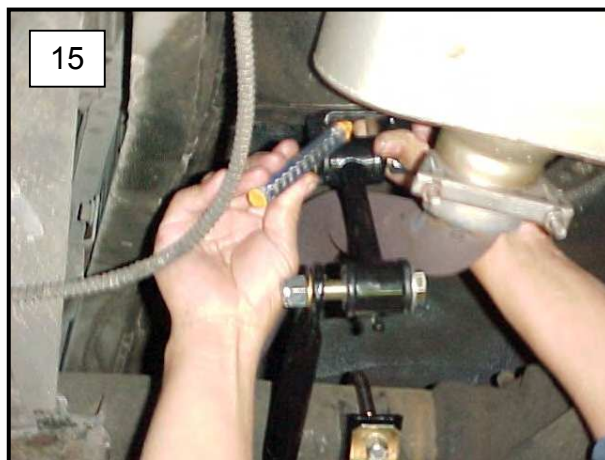
13. Place the sway bar assembly under the axle and slip the U-bolt legs through the sway bar brackets. Place washers and nylock nuts on the U-Bolt. Do not tighten completely at this point, just mostly tight.



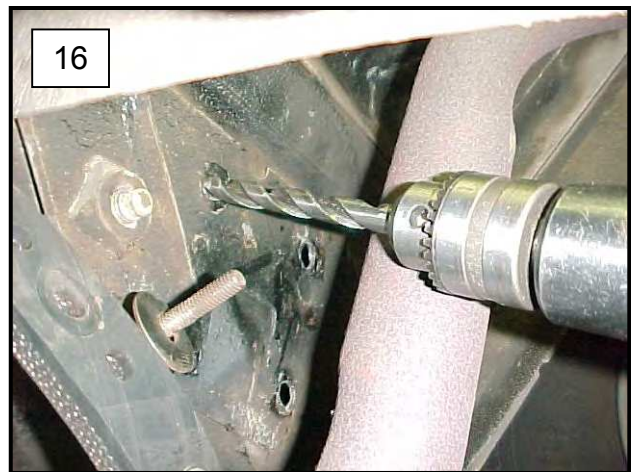
14. Rotate the bar and end link till the triangular bracket is seated just to the outside of the lower seat mount bulge. Using a pencil or marker, trace the inside of each bracket's holes to mark their location.



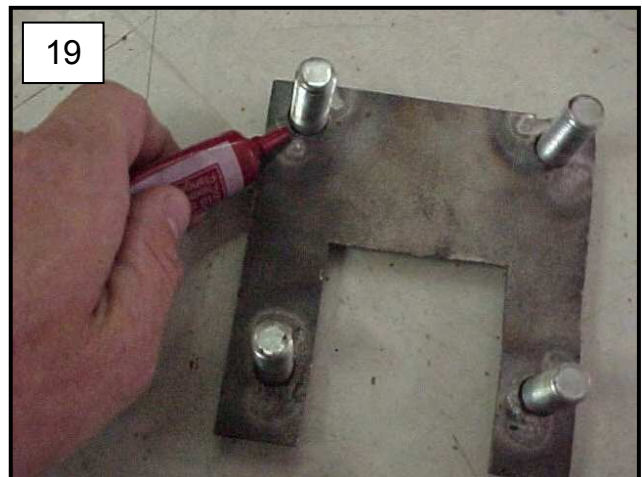
15. Rotate the bar out of the way and drill the 4 holes with a 1/2" drill bit.



16. Get the two reinforcement plates (U-shaped w/ four studs) and using them as a template, mark two more holes to the inside of the seat mount bump.
17. Drill these four new holes with a 1/2" drill.

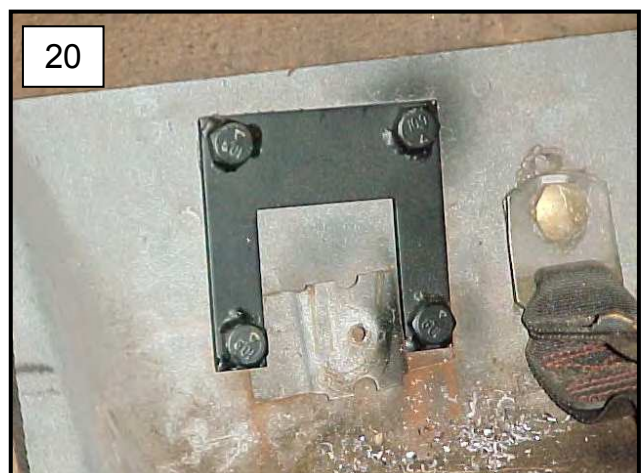
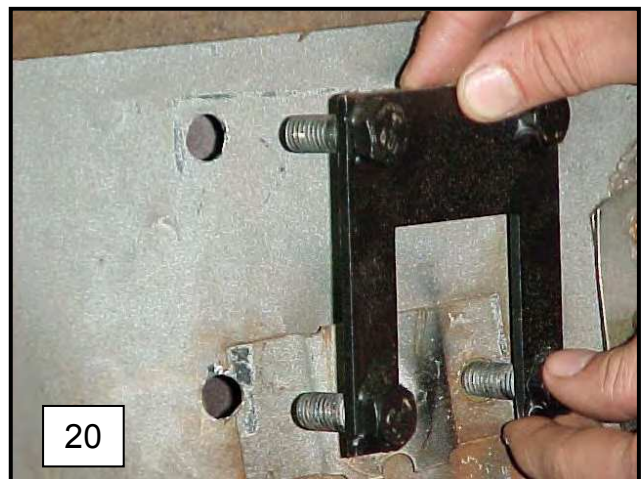


18. Using silicone gasket sealer, run a small bead of silicone sealer around the base of the studs on the reinforcement plates. (See Image 19)



19. Drop the two reinforcement plates in from the interior. Make sure the 'U' is upside down. (See Image 20)

20. Rotate the sway bar back into place and slip the triangle brackets over the two outermost studs. Install small washers and nylock nuts from the T1719 hardware pack on these four studs and tighten.



This is a picture that shows the triangular bracket bolted in place on the backside of the rear seat area on the driver's side. The dog bone end link is not pictured for clarity.

21. Take the large washers and remaining nuts from the T1719 hardware kit and install them on the four remaining studs that are sticking through the body.
22. Rotate the bar assembly on the axle until the dog-one end-inks are nearly vertical.
23. Then tighten up the axle U-Bolt to 35 – 40 ft-lbs
24. Check that all bolts are tightened.
25. Reinstall the rear seats.



**In the future, you may use any good chassis grease to keep your product lubricated. DO NOT use white Lithium based greases as the can and will wash out.**





## HOTCHKIS PERFORMANCE WARRANTY POLICY

Effective January 1, 2000. Supersedes all previous policy statements. Policies are subject to change without notice. Hotchkis Performance is not responsible for printing errors.

If you purchased your Hotchkis Performance product from an authorized dealer, you are covered by the terms of this policy. All claims however, must be submitted THROUGH YOUR DEALER not to *Hotchkis Performance* directly.

### Return Policy:

We want you to be completely satisfied with your Hotchkis Performance product. In case you're not, you can exchange or return it within 30 days of the purchase date. To obtain a full refund, excluding freight, please contact our Customer Service Department at (562) 907-7757. You will be assigned a Returned Goods Authorization Number (RGA). The package you return must show the RGA on the outside of the package, include the original invoice and be shipped prepaid to our facility. The part has to be in its original packaging materials and be in a sellable condition. For parts presenting signs of use, only warranty claims will be accepted. Exchanges or refunds can be made after 30 days with a 20% restocking charge.

### Warranty Claim:

***Hotchkis Performance warrants its products against materials and workmanship failure for the term of 36 months (3 year) from the date of purchase and only up to the amount paid. If the product is determined to be defective, Hotchkis Performance will repair, replace or refund its value at Hotchkis Performance's discretion. Any repaired or replaced product will be returned to the sender freight prepaid.***

### How to File a Warranty Claim:

The answer to ALL the following questions should be YES before contacting our Customer Service Department.

- Is the part appropriate to your application?
- Did you carefully and thoroughly read the instructions provided along with the part?
- Do you have the proof of purchase?
- Are you the original purchaser?
- Is the part unmodified and clean?
- Is the return date within 36 months from the purchase date?
- Is the reason for return a legitimate product defect?

If the answer to all these questions is YES, please contact our Customer Service Department at (562) 907-7757. You will be given a Returned Goods Authorization Number (RGA) valid for 60 days. You will also be asked to ship the part prepaid to our facility. All shipments MUST be prepaid, include the original invoice and show the RGA on the outside of the package, otherwise it will be refused. Please include a brief explanation letter in order to expedite the warranty analysis process.

### What doesn't this Warranty Cover?

The costs not covered by this warranty include but are not limited to:

- Removal, installation, shipment and insurance costs.
- Improper installation or maintenance.
- Misuse or abuse, negligence, off-road and/or racing applications.
- Damage to related components.
- Normal wear and tear.
- Costs incurred due to down time of vehicle.
- Alterations on the original design or unauthorized repairs.

Items offered but not manufactured by Hotchkis Performance are warranted according to the manufacturers terms and are not the responsibility of Hotchkis Performance.

All warranties implied by law are limited in duration of this warranty. You have specific rights that may vary from state to state. 12035 BURKE ST. SUITE 13 SANTA FE SPRINGS, CA 90670

**PHONE: (562) 907-7757 FAX: (562) 907-7765**





HORSEPOWER FOR YOUR SUSPENSION

***RETURN THIS FORM FOR A FREE 9" DIE CUT STICKER!***

Thank you for purchasing our products.

Our goal is to supply you with the highest quality, and the most thoroughly tested performance products available. To assist us in continuing to do this, please take a moment to fill out and return this questionnaire.

Name: \_\_\_\_\_

Address: \_\_\_\_\_

City: \_\_\_\_\_ State: \_\_\_\_\_ Zip: \_\_\_\_\_

Phone #: \_\_\_\_\_ E-Mail: \_\_\_\_\_

Year, make and model, car/truck: \_\_\_\_\_

What parts did you purchase? \_\_\_\_\_

Where did you purchase them? \_\_\_\_\_

Were you satisfied with this transaction? \_\_\_\_\_ Y N

(If not, why?) \_\_\_\_\_

**WERE YOU SATISFIED WITH THE FOLLOWING?**

Fabrication and finish: \_\_\_\_\_

Instructions and ease of installation: \_\_\_\_\_

Performance improvement: \_\_\_\_\_

(If not, why?) \_\_\_\_\_

What other products would you like to see us make?

Have you read about our products on the Internet? \_\_\_\_\_ Y N

(If so, where?) \_\_\_\_\_

Where have you seen our products?

(i.e. magazines/shows/catalogs) \_\_\_\_\_

**12035 BURKE ST. SUITE 13 SANTA FE SPRINGS, CA**

**90670**

**PHONE: (562) 907-7757 FAX: (562) 907-7765**