

CHANCELLOR

ASSISTANT CHANCELLOR BUDGET AND PLANNING

Todd G. Lee

- Budget
- Real Estate
- Capital Development
- Institutional Research and Planning
- Academic Program Review

CHANCELLOR

Henry T. Yang

EXECUTIVE ASSISTANT TO THE CHANCELLOR

Kevin R. McCauley

VICE CHANCELLOR ADMINISTRATIVE SERVICES

Donna J. Carpenter
(Acting)

- Accounting Services and Controls
- Administrative and Auxiliary Services
- Audit & Advisory Services
- Business Services
- Campus Design & Facilities
- Design & Construction
- Environmental Health and Safety
- Housing and Residential Services
- Human Resources
- Information Systems and Computing
- Physical Facilities, Transportation & Parking Services
- Physical Planning
- Police
- University Center/Events Center

VICE CHANCELLOR STUDENT AFFAIRS

Michael D. Young

- Enrollment Services and Management
- Student Academic Support Services
- Student Life and Isla Vista / Community Affairs
- Resource Planning

EXECUTIVE VICE CHANCELLOR

Glenn E. Lucas

- Academic Personnel
- Academic Programs
- California Nanosystems Institute (CNSI)
- Colleges of Creative Studies, Engineering, Letters and Science, Graduate Division, Gevirtz Graduate School of Education, Donald Bren School of Environmental Science and Management
- Diversity, Equity & Academic Policy
- Institute for Collaborative Biotechnologies
- Kavli Institute for Theoretical Physics
- Library
- Office of Academic Preparation & Equal Opportunity
- Office of Information Technology
- Ombuds
- Sexual Harassment Complaint Resolution Office

VICE CHANCELLOR RESEARCH

Michael S. Witherell

- Center for Black Studies
- Center for Chicano Studies
- Institute for Computational Earth Systems Science
- Institute for Crustal Studies
- Institute for Quantum and Complex Dynamics
- Institute for Social, Behavioral, and Economic Research
- Marine Science Institute
 - National Center for Ecological Analysis and Synthesis
 - UCSB Natural Reserve System
- Neuroscience Research Institute
- UC Linguistic Minority Research Institute

VICE CHANCELLOR INSTITUTIONAL ADVANCEMENT

John M. Wiemann

- Alumni Affairs
- Community Relations
- Development
- Economic Forecast Project
- Finance and Administration
- Governmental Relations
- Public Affairs
- Public Events
- The UCSB Foundation

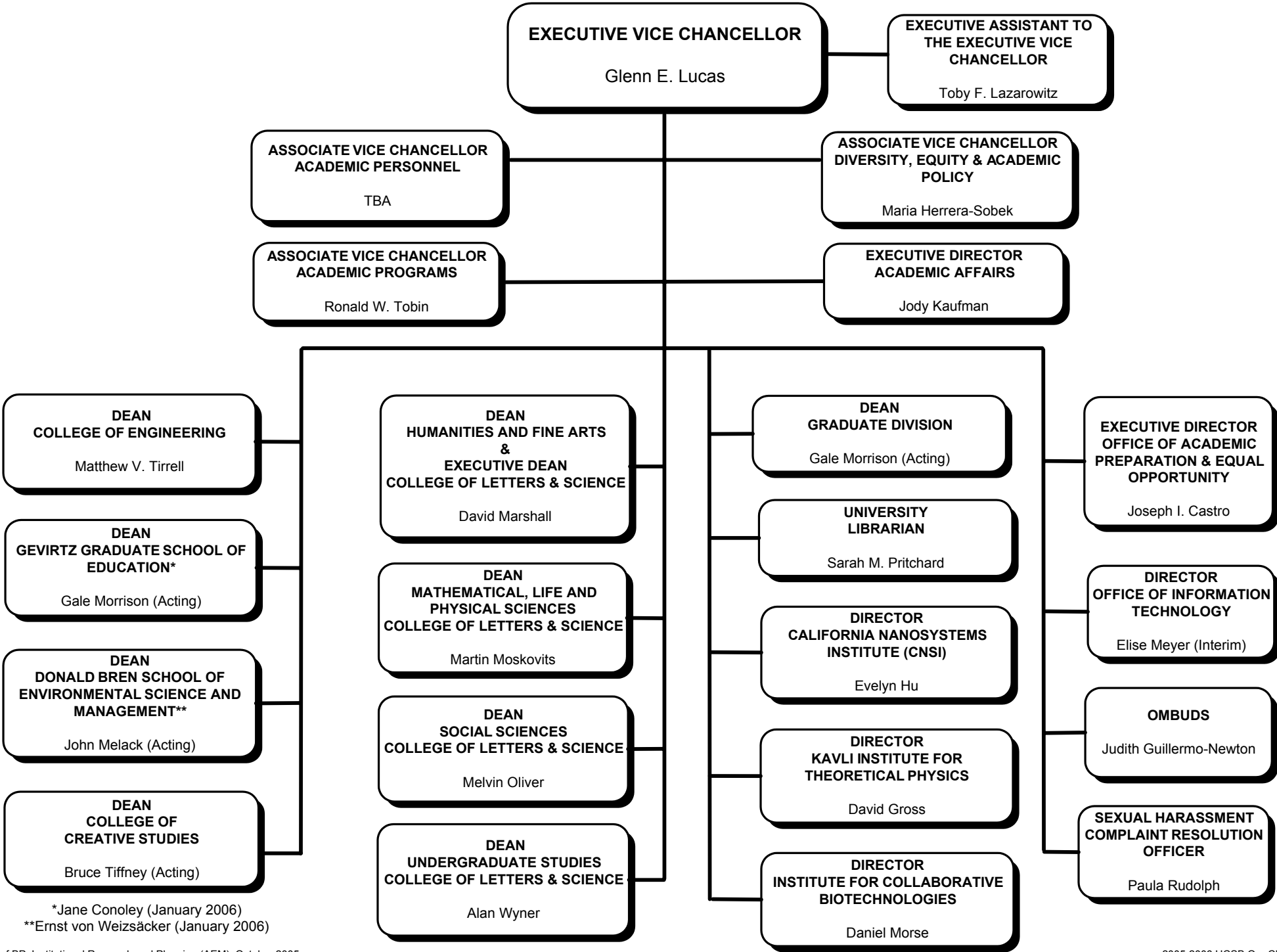
DIRECTOR INTERCOLLEGIATE ATHLETICS

Gary A. Cunningham

DIRECTOR LABORATORY FOR AGGREGATE ECONOMICS & FINANCE

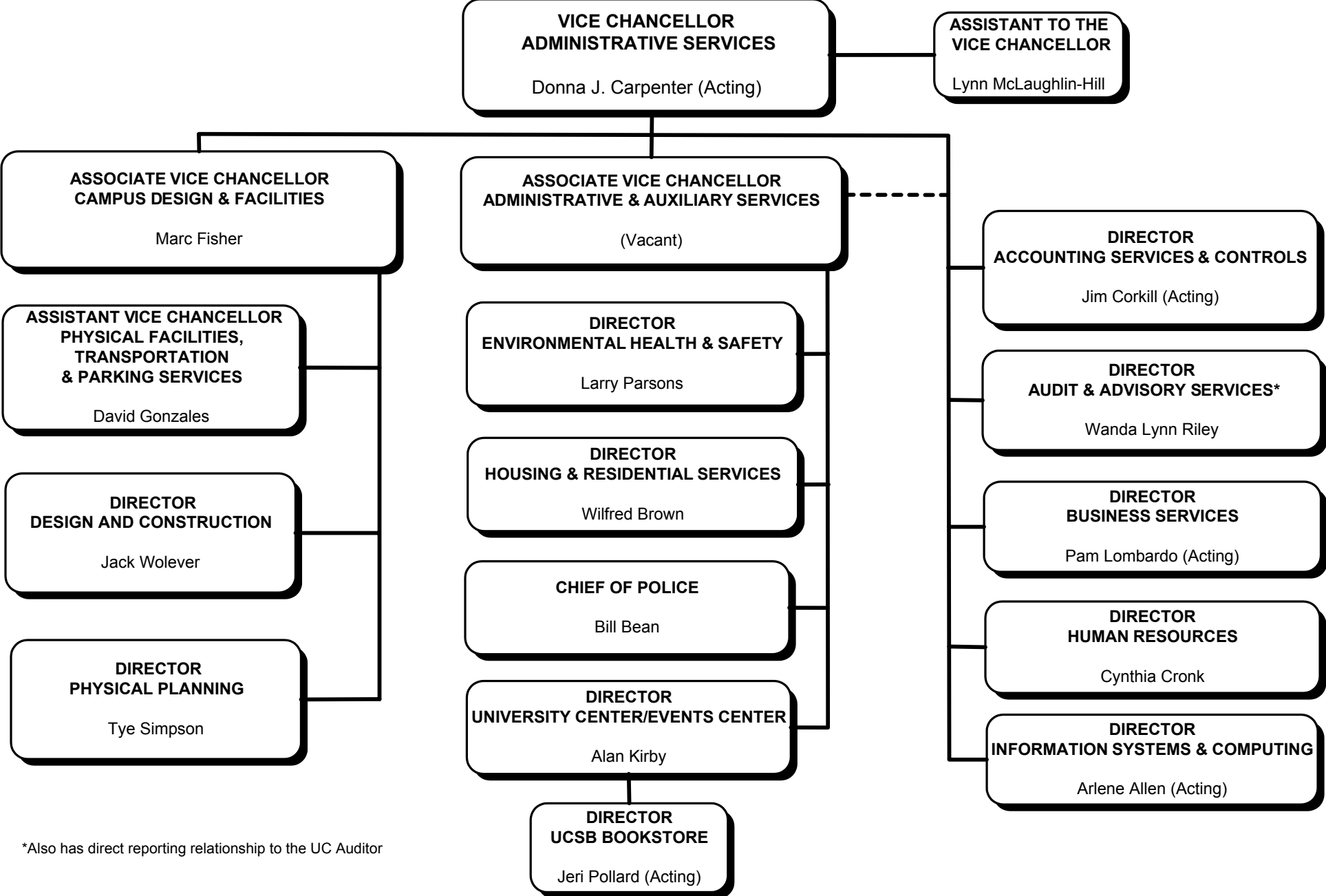
Finn Kydland, Nobel Laureate

EXECUTIVE VICE CHANCELLOR



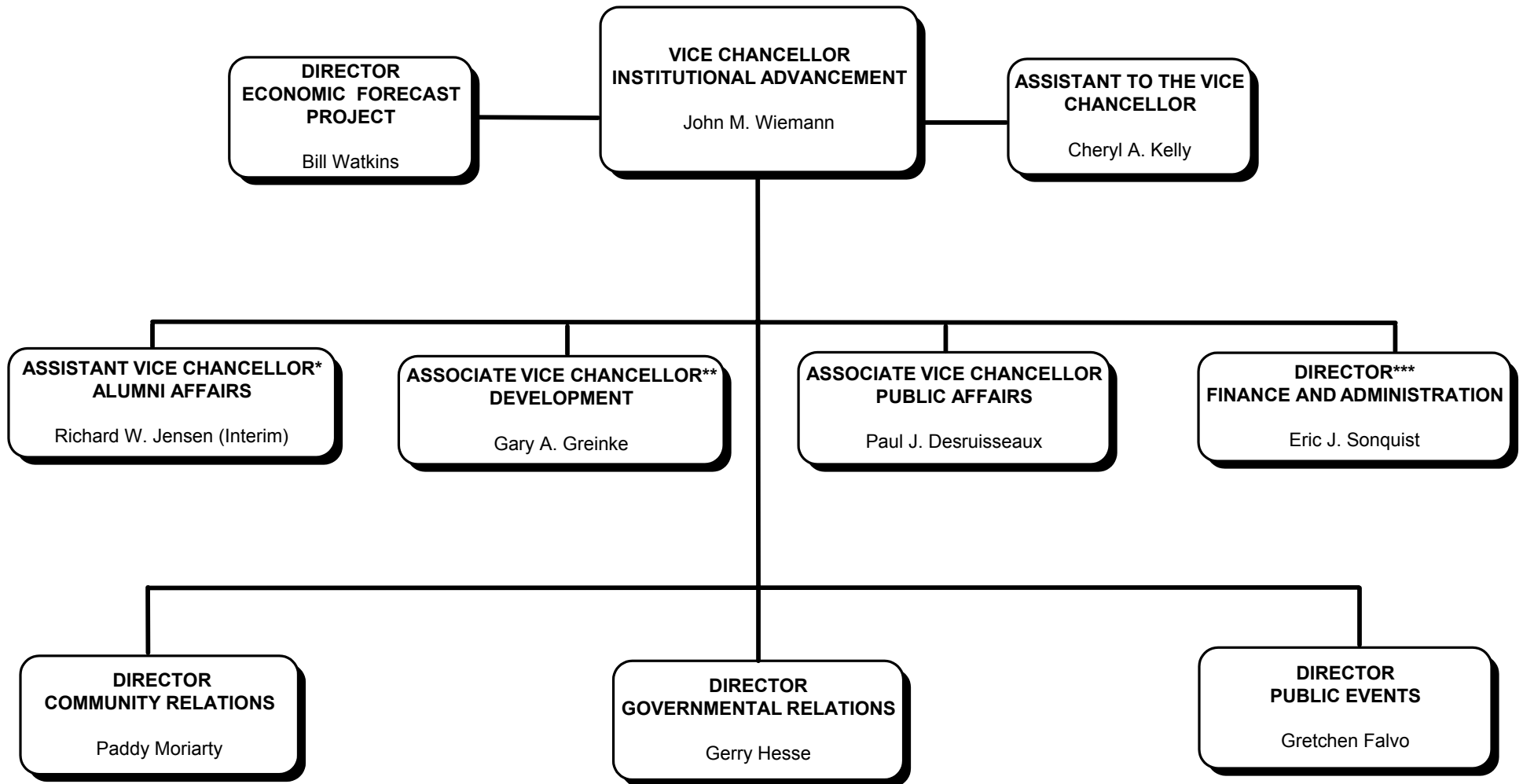
*Jane Conoley (January 2006)
 **Ernst von Weizsäcker (January 2006)

VICE CHANCELLOR FOR ADMINISTRATIVE SERVICES



*Also has direct reporting relationship to the UC Auditor

VICE CHANCELLOR FOR INSTITUTIONAL ADVANCEMENT



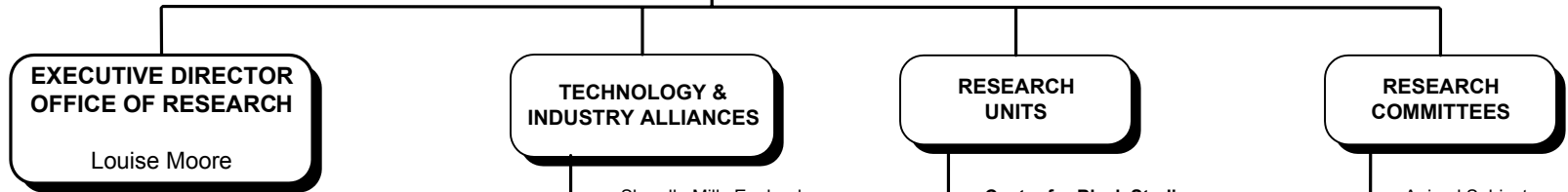
*Appointment also carries title of Executive Director, UCSB Alumni Association
 **Appointment also carries title of Executive Director, The UCSB Foundation
 ***Appointment also carries title of Chief Financial Officer, The UCSB Foundation

VICE CHANCELLOR FOR RESEARCH

VICE CHANCELLOR RESEARCH
Michael Witherell

EXECUTIVE DIRECTOR
Louise Moore

ASSISTANT TO VCR
Norma Marquez



**RESEARCH
SUPPORT &
COMPLIANCE**

- **Campus Veterinarian* and Director of Animal Resource Center**
Julie Barnes (Acting)
- **Integrity in Research**
Louise Moore, Coordinator
- **Institutional Cost Sharing**
Louise Moore, Coordinator
- **Organized Research Units**
Nancy Doner, Coordinator
- **Human Subjects, Research Personnel**
Kathy Graham, Coordinator
- **Animal Subjects,**
Julie Selleck, Coordinator

**SPONSORED
PROJECTS**

- **Sponsored Projects**
Karen Hanson, Director
- **Sponsored Projects**
TBN, Associate Director
- **Conflict of Interest**
Karen Hanson, Coordinator

**RESEARCH
DEVELOPMENT**

- **Research Development**
Carla S. Whitacre, Director
- **Research Publications**
Judy Watts, Writer/Editor
- **Social Science Research Development**
Barbara Harthorn, Director

**TECHNOLOGY &
INDUSTRY ALLIANCES**

- Sherylle Mills Englander,
Director
- Oren Livne,
Associate Director,
Licensing

**RESEARCH
UNITS**

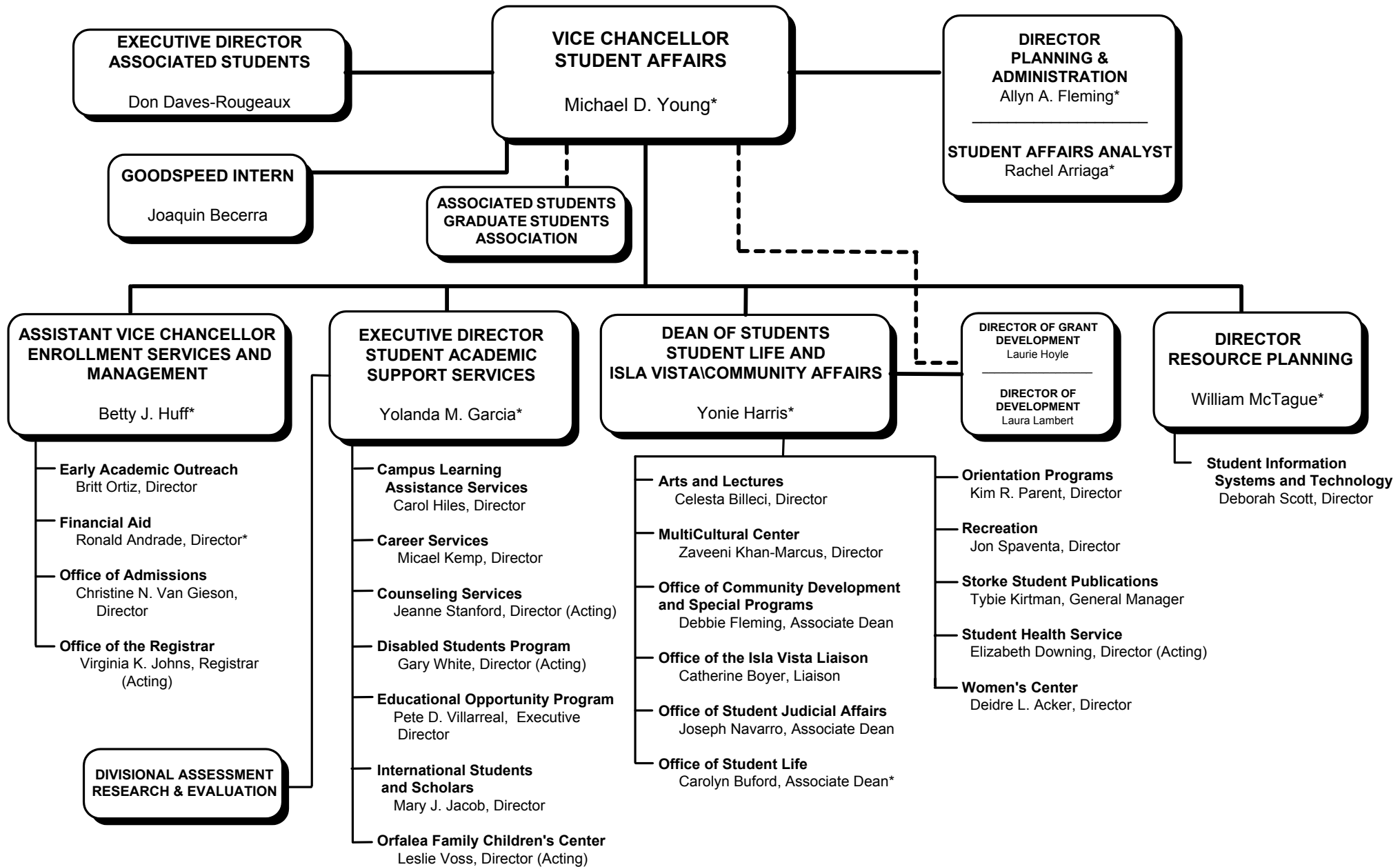
- **Center for Black Studies**
Claudine Michel, Director
- **Center for Chicano Studies**
Carl Gutierrez-Jones, Director
- **Institute for Computational Earth Systems Science**
David Siegel, Director
- **Institute for Crustal Studies**
Douglas Burbank, Director
- **Institute for Quantum and Complex Dynamics**
Mark Sherwin, Director
- **Institute for Social, Behavioral, and Economic Research**
Richard P. Appelbaum, Director
- **Marine Science Institute**
Steven D. Gaines, Director
- **National Center for Ecological Analysis and Synthesis**
O.J. Reichman, Director
- **Natural Reserve System**
William Murdoch, Director
- **Neuroscience Research Institute**
Stuart Feinstein, Co-Director
Kenneth Kosik, Co-Director
- **UC Linguistic Minority Research Institute**
Russell Rumberger, Director

**RESEARCH
COMMITTEES**

- Animal Subjects
- Human Subjects
- Conflict of Interest
- Repatriation of Native American Remains & Artifacts

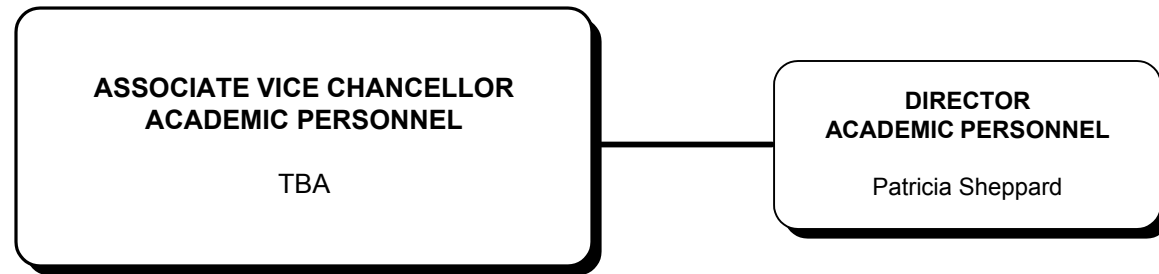
*Dual reporting to Dean, MLPS

VICE CHANCELLOR FOR STUDENT AFFAIRS

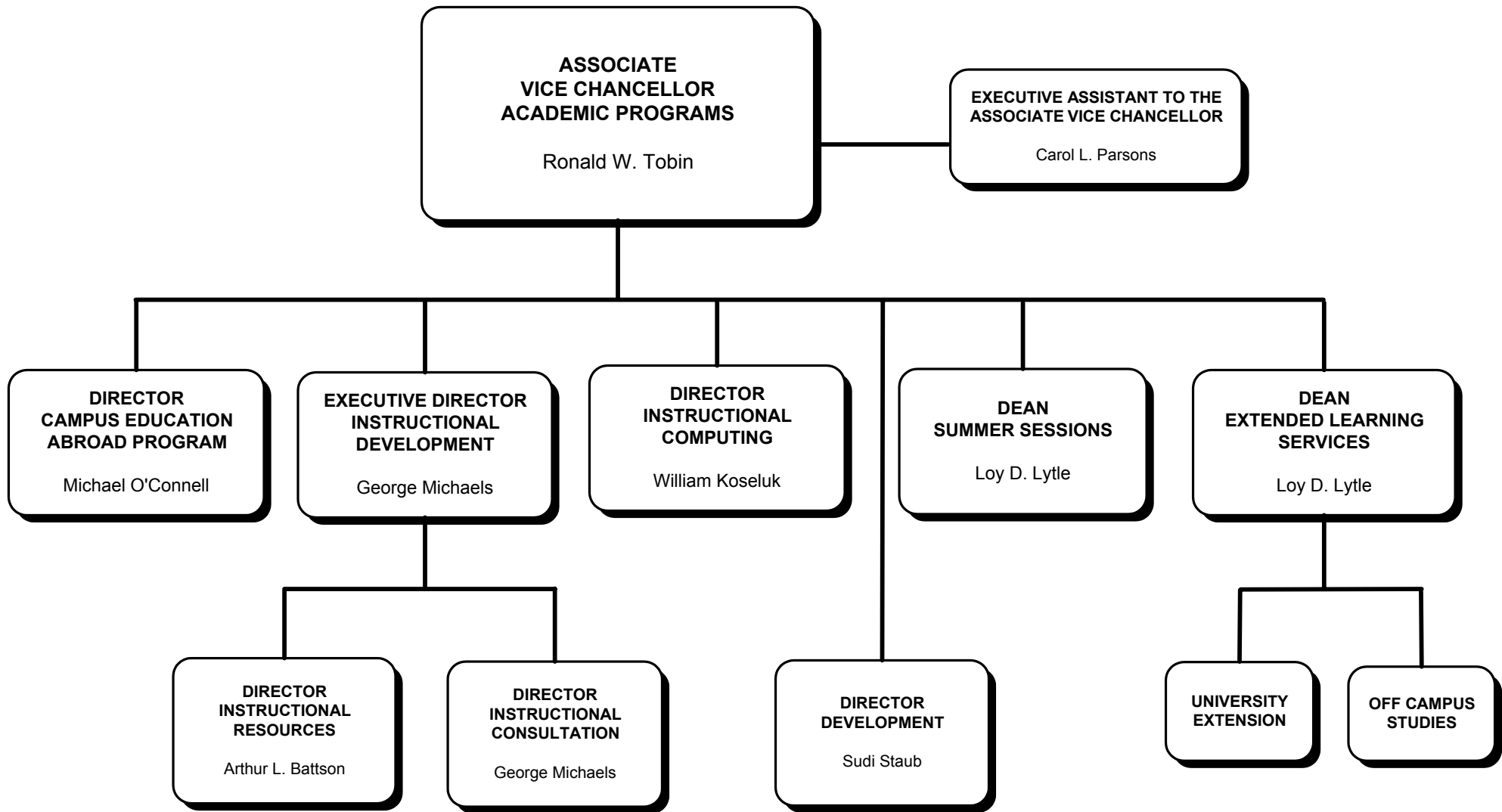


*Members of Division of Student Affairs Executive Group

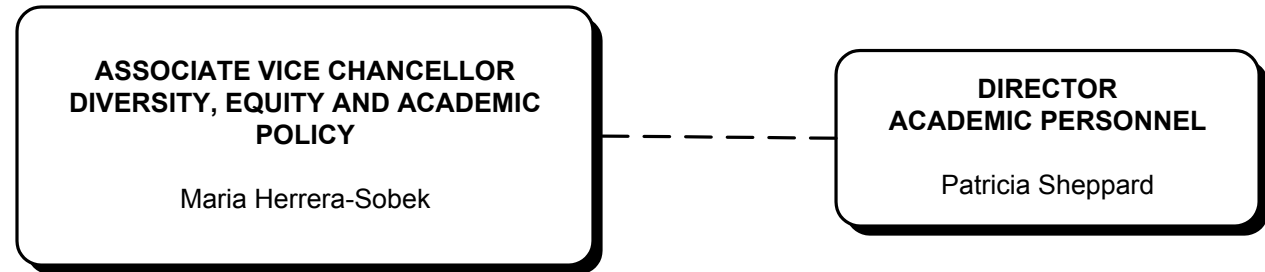
ASSOCIATE VICE CHANCELLOR FOR ACADEMIC PERSONNEL



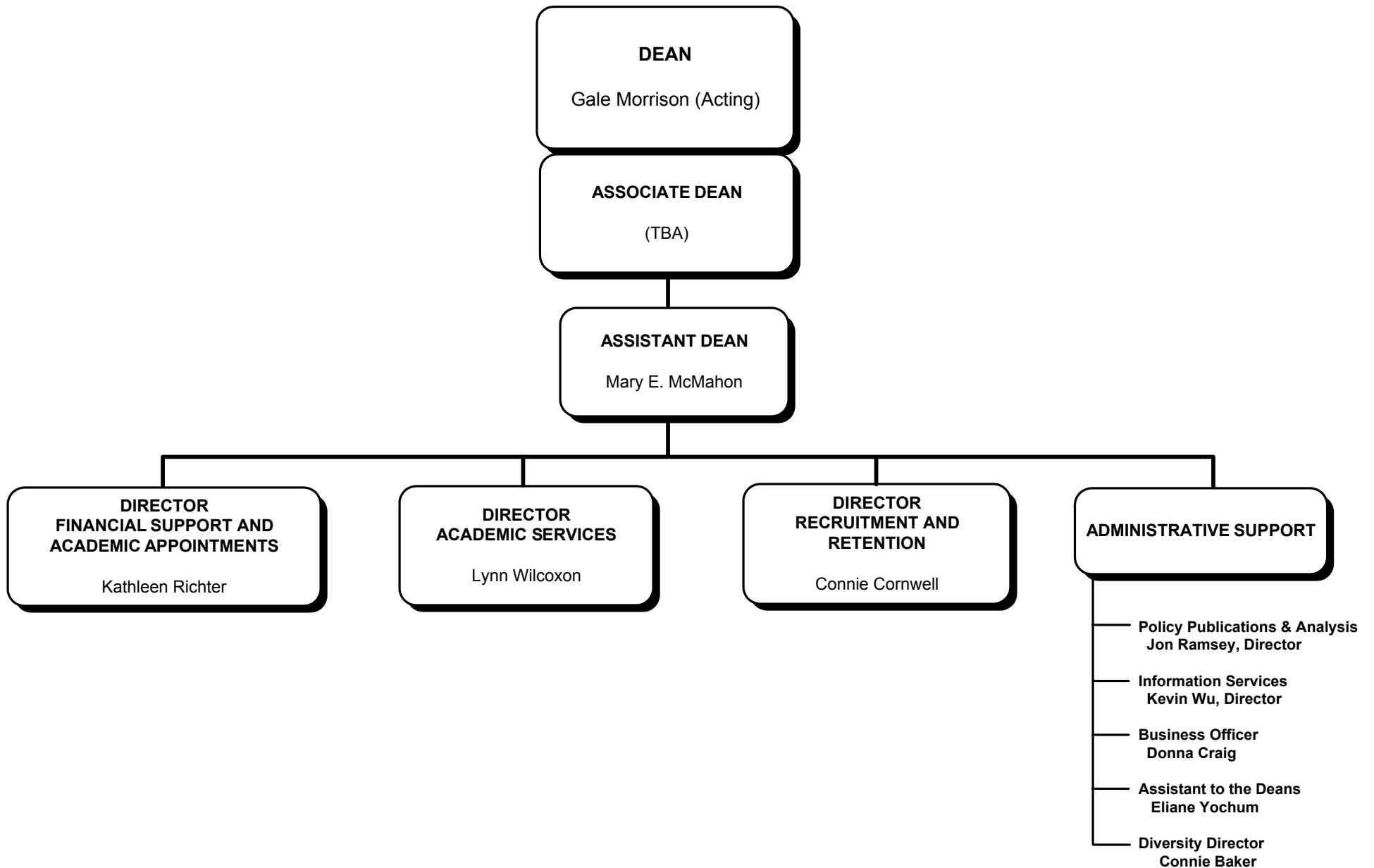
ASSOCIATE VICE CHANCELLOR FOR ACADEMIC PROGRAMS



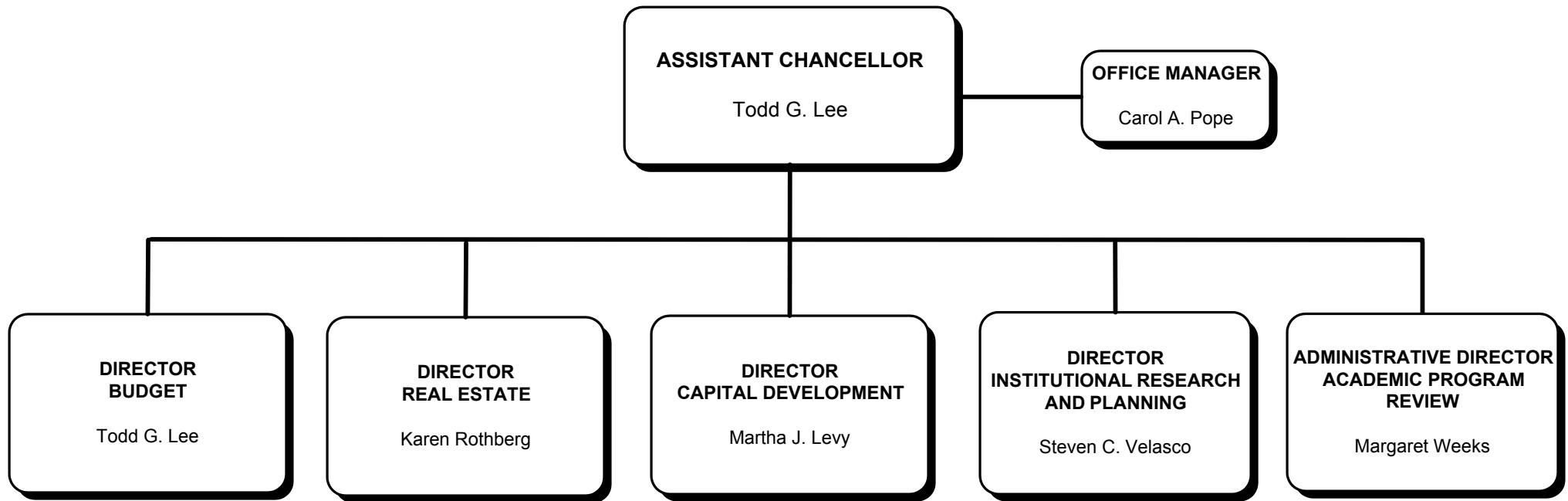
ASSOCIATE VICE CHANCELLOR FOR DIVERSITY, EQUITY AND ACADEMIC POLICY



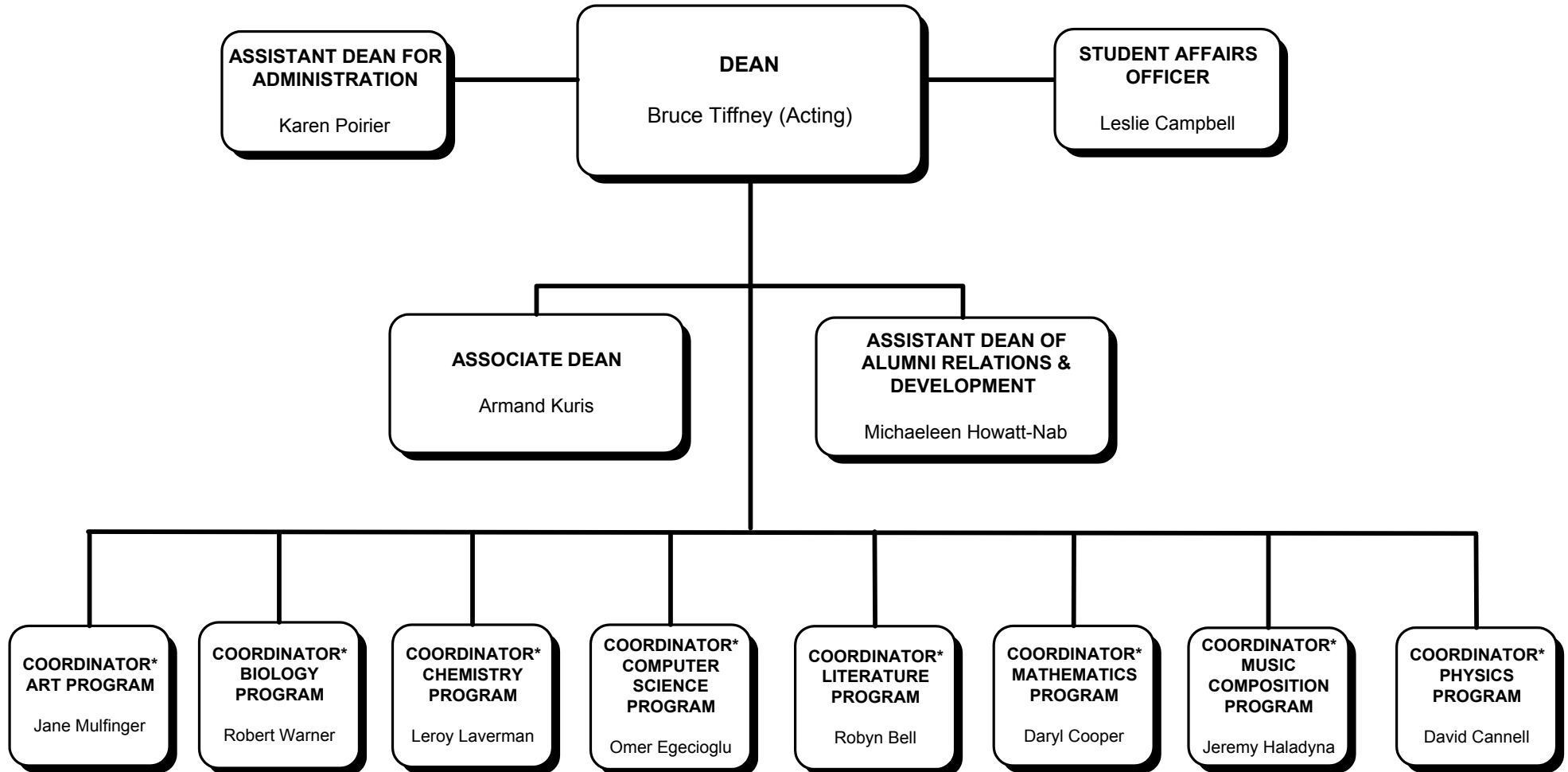
DEAN OF GRADUATE DIVISION



OFFICE OF BUDGET AND PLANNING

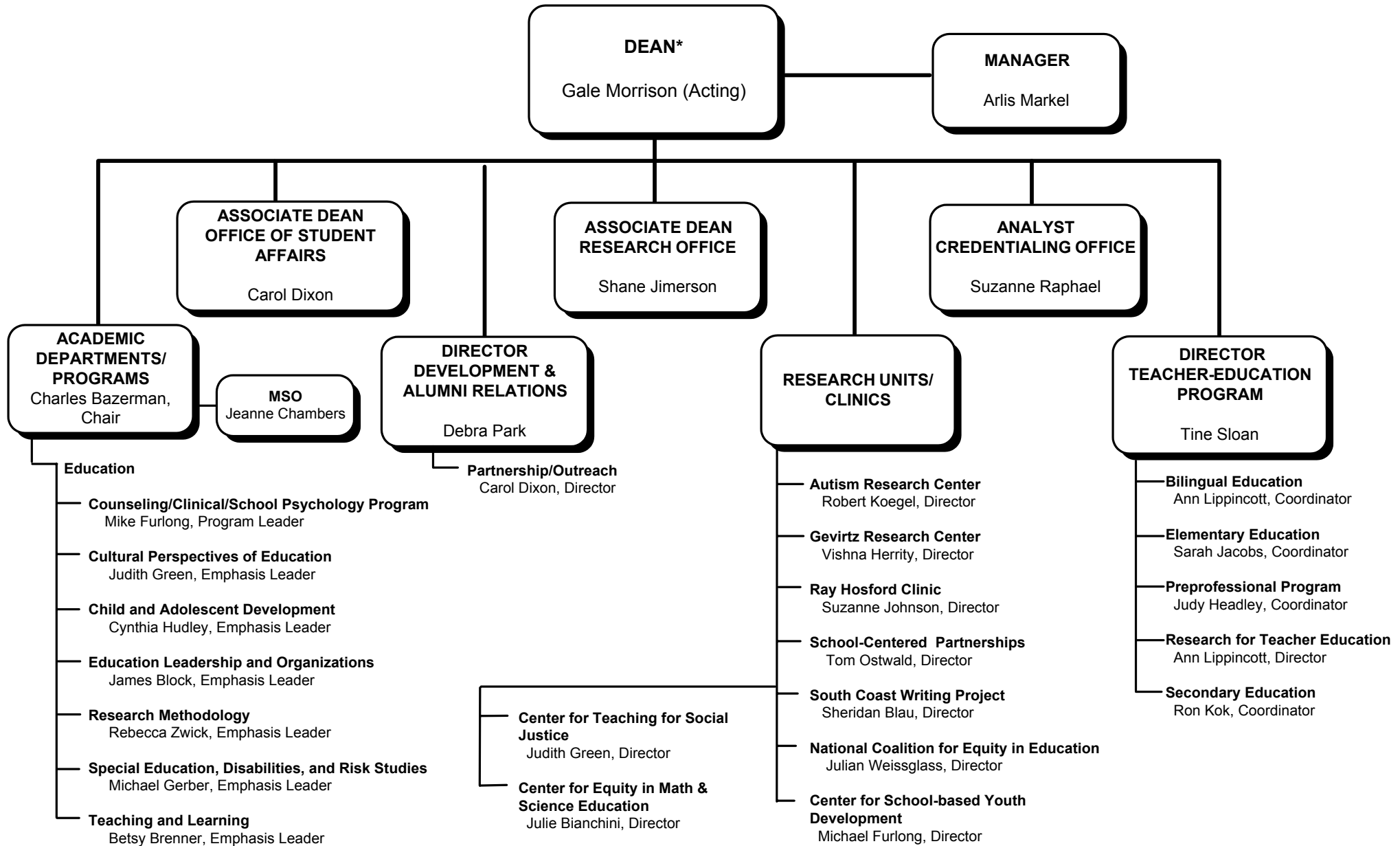


COLLEGE OF CREATIVE STUDIES



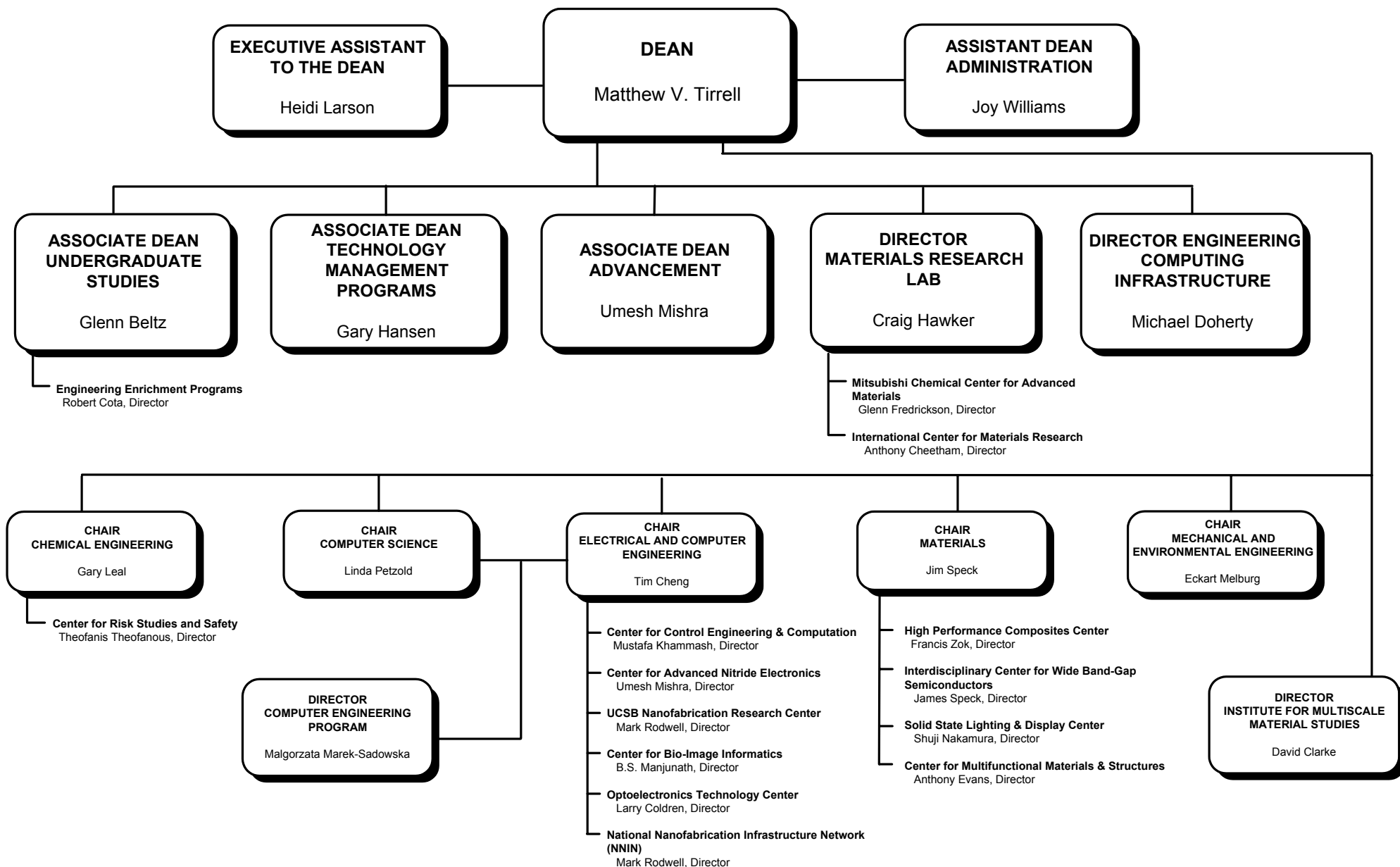
*Appointment carries membership in the CCS Executive Committee

GEVIRTZ GRADUATE SCHOOL OF EDUCATION

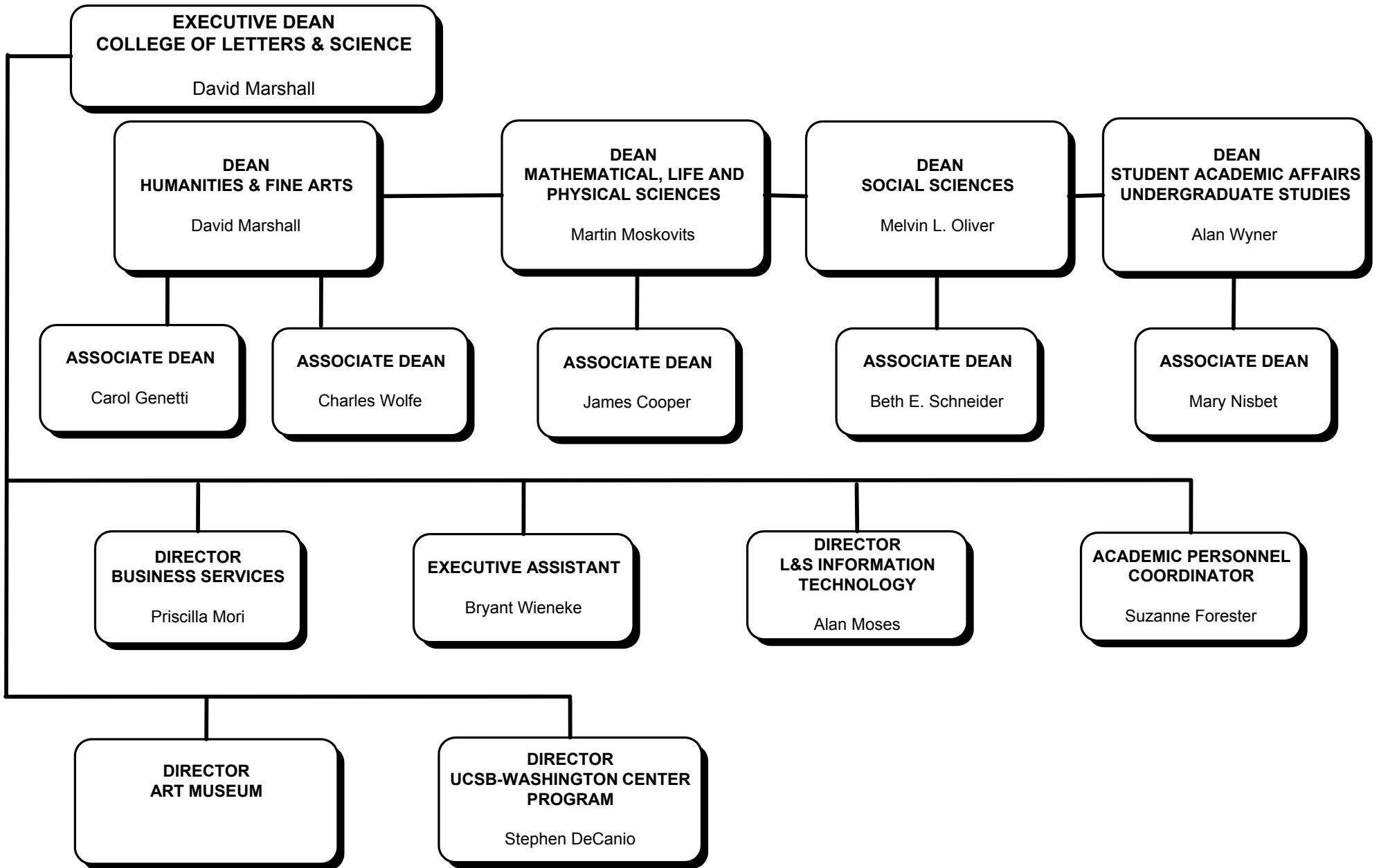


*Jane Conoley (January 2006)

COLLEGE OF ENGINEERING

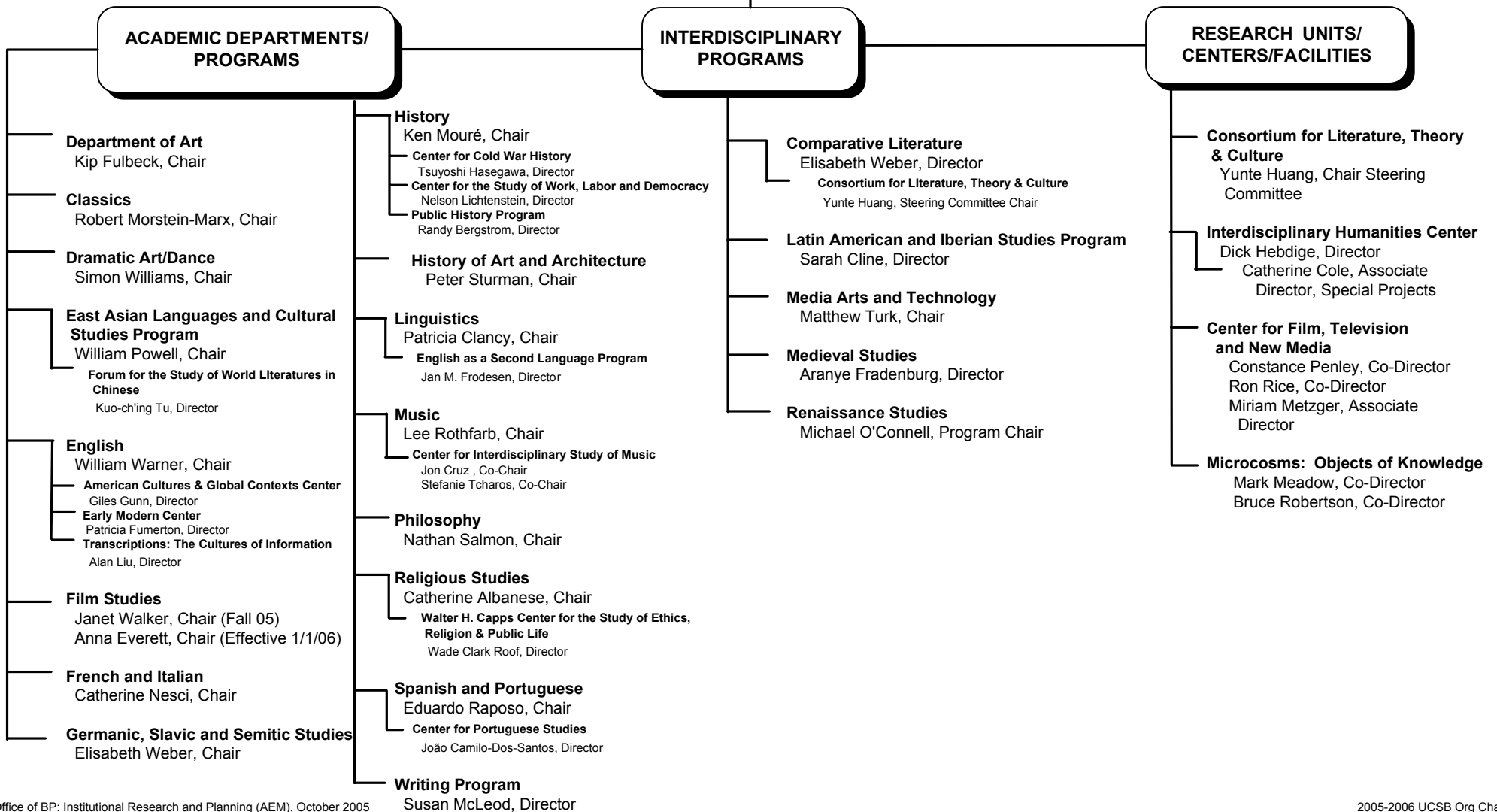
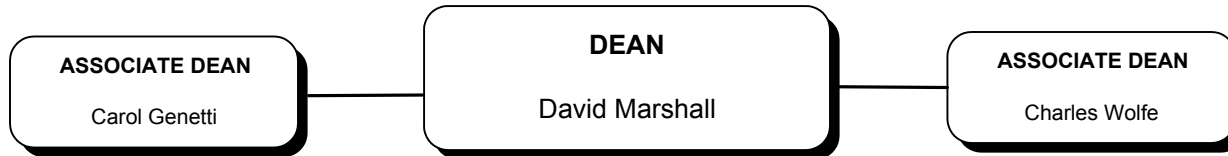


COLLEGE OF LETTERS AND SCIENCE



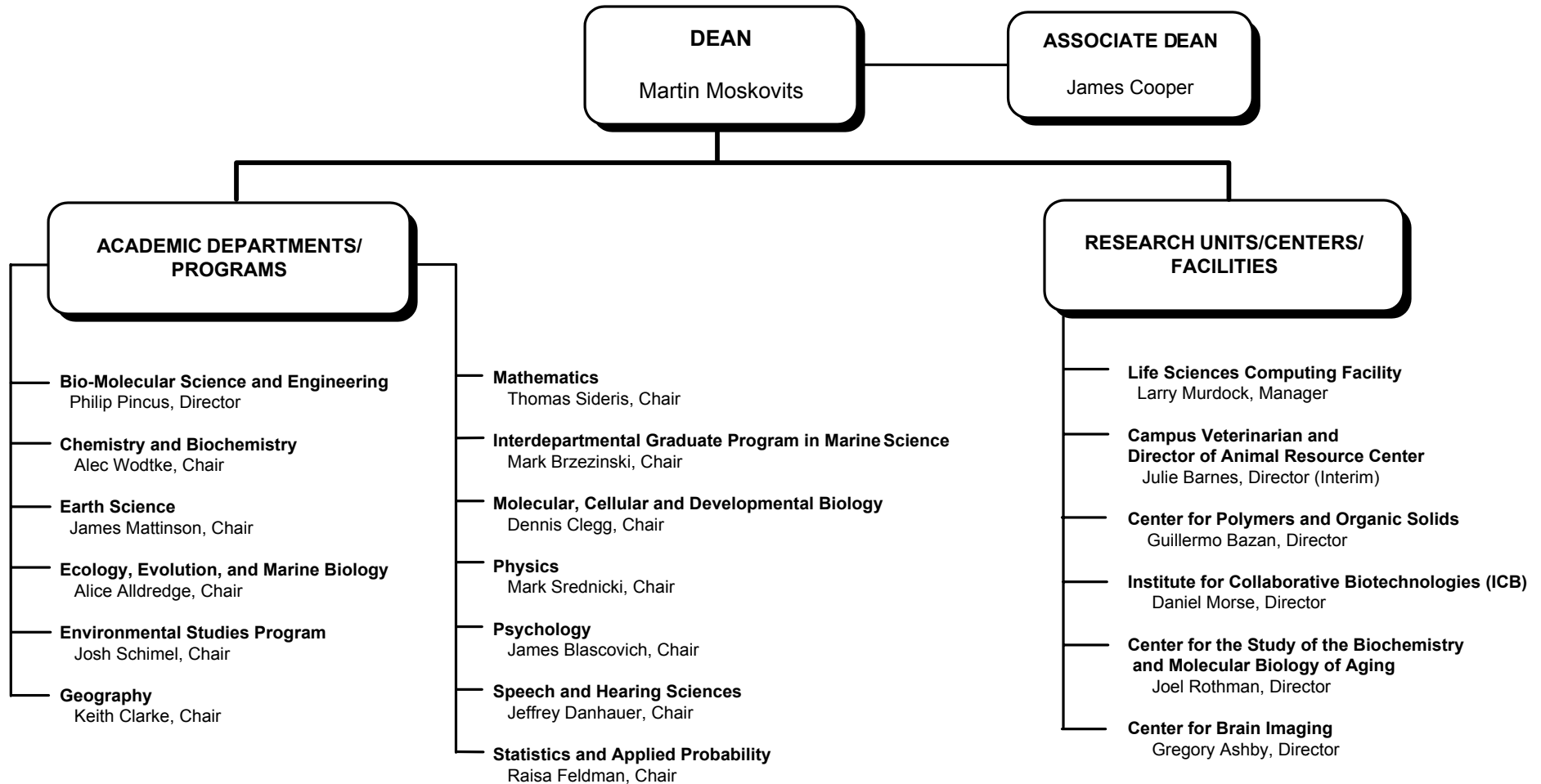
COLLEGE OF LETTERS AND SCIENCE

DIVISION OF HUMANITIES AND FINE ARTS



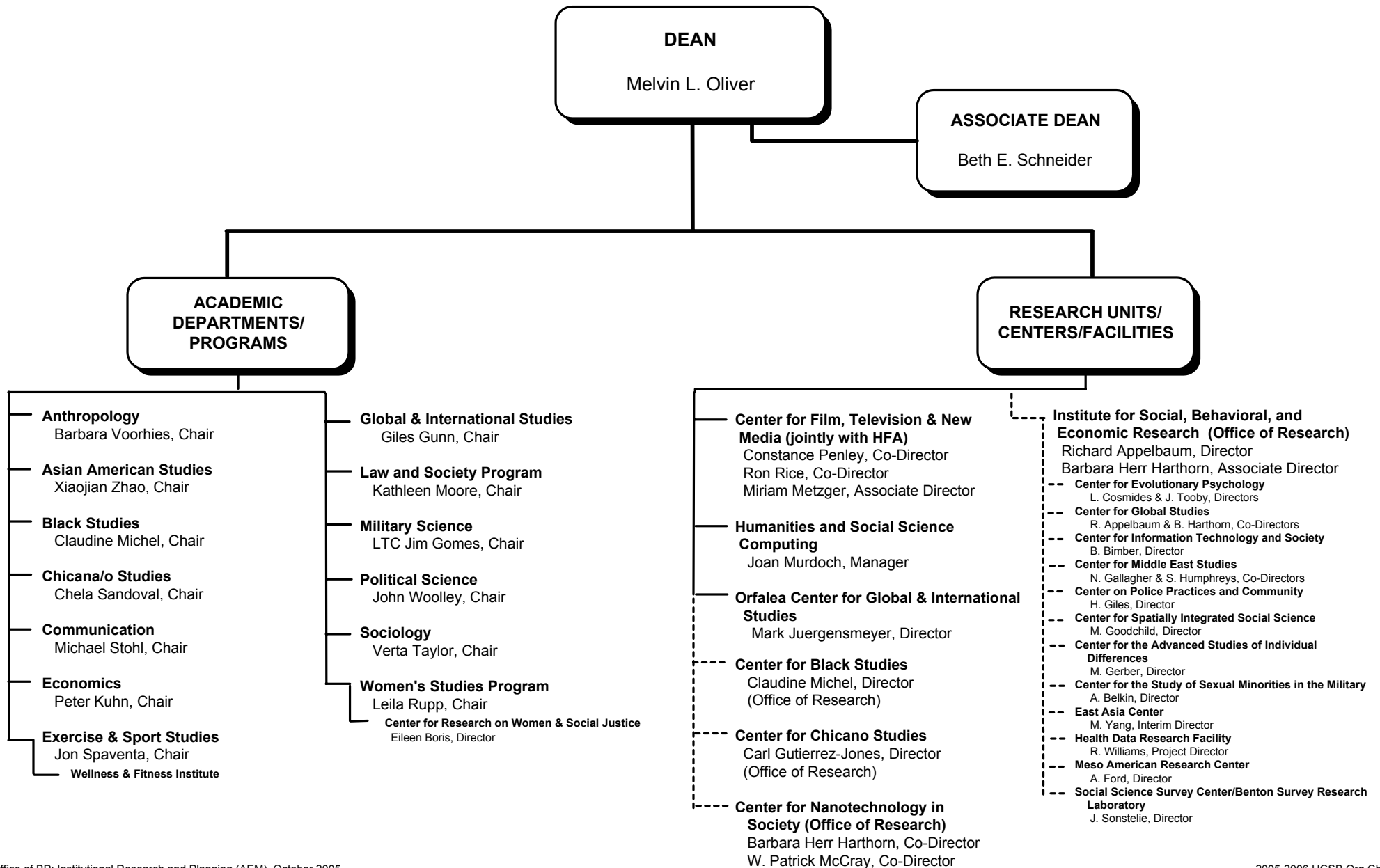
COLLEGE OF LETTERS AND SCIENCE

DIVISION OF MATHEMATICAL, LIFE, AND PHYSICAL SCIENCES

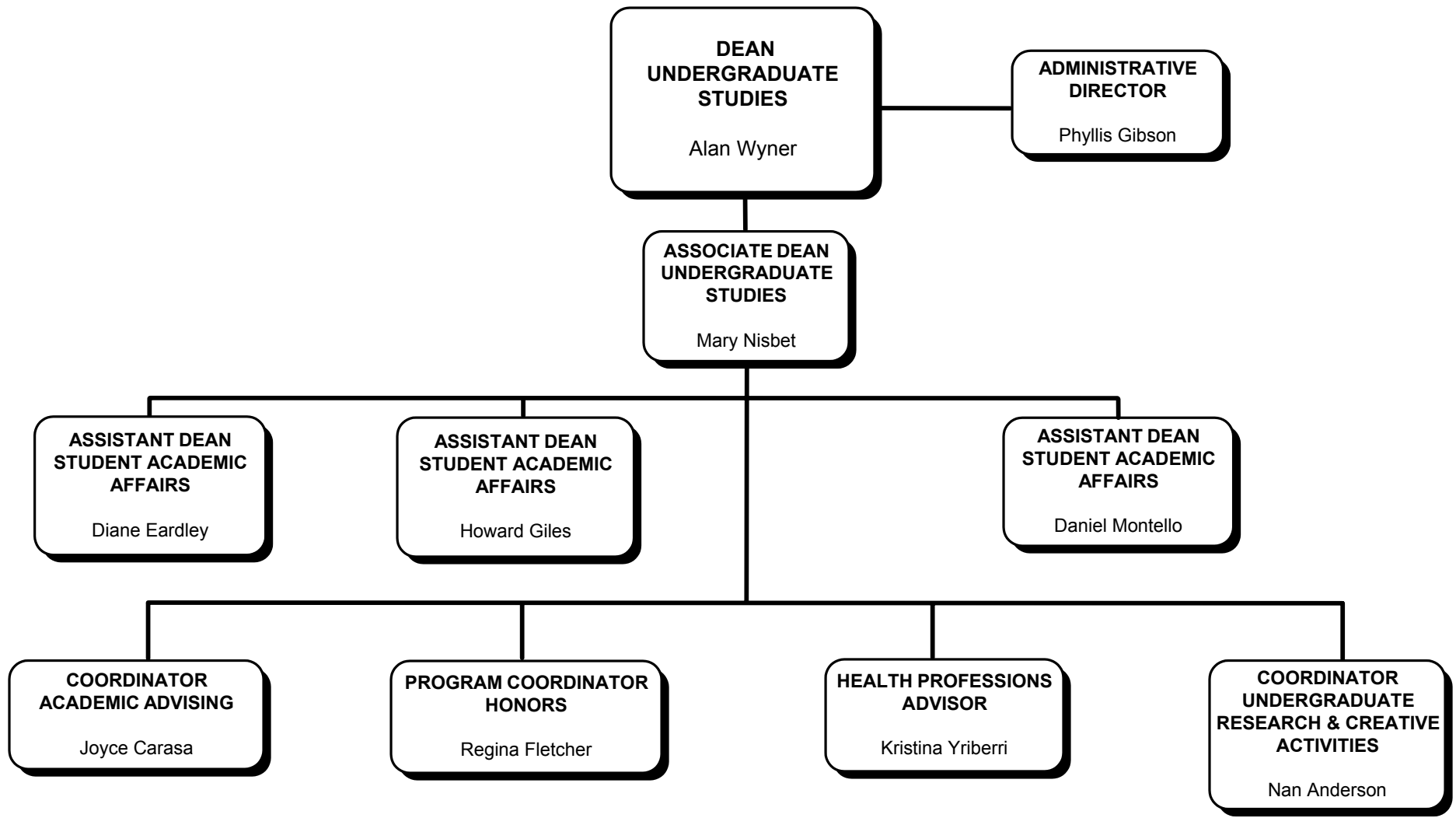


COLLEGE OF LETTERS AND SCIENCE

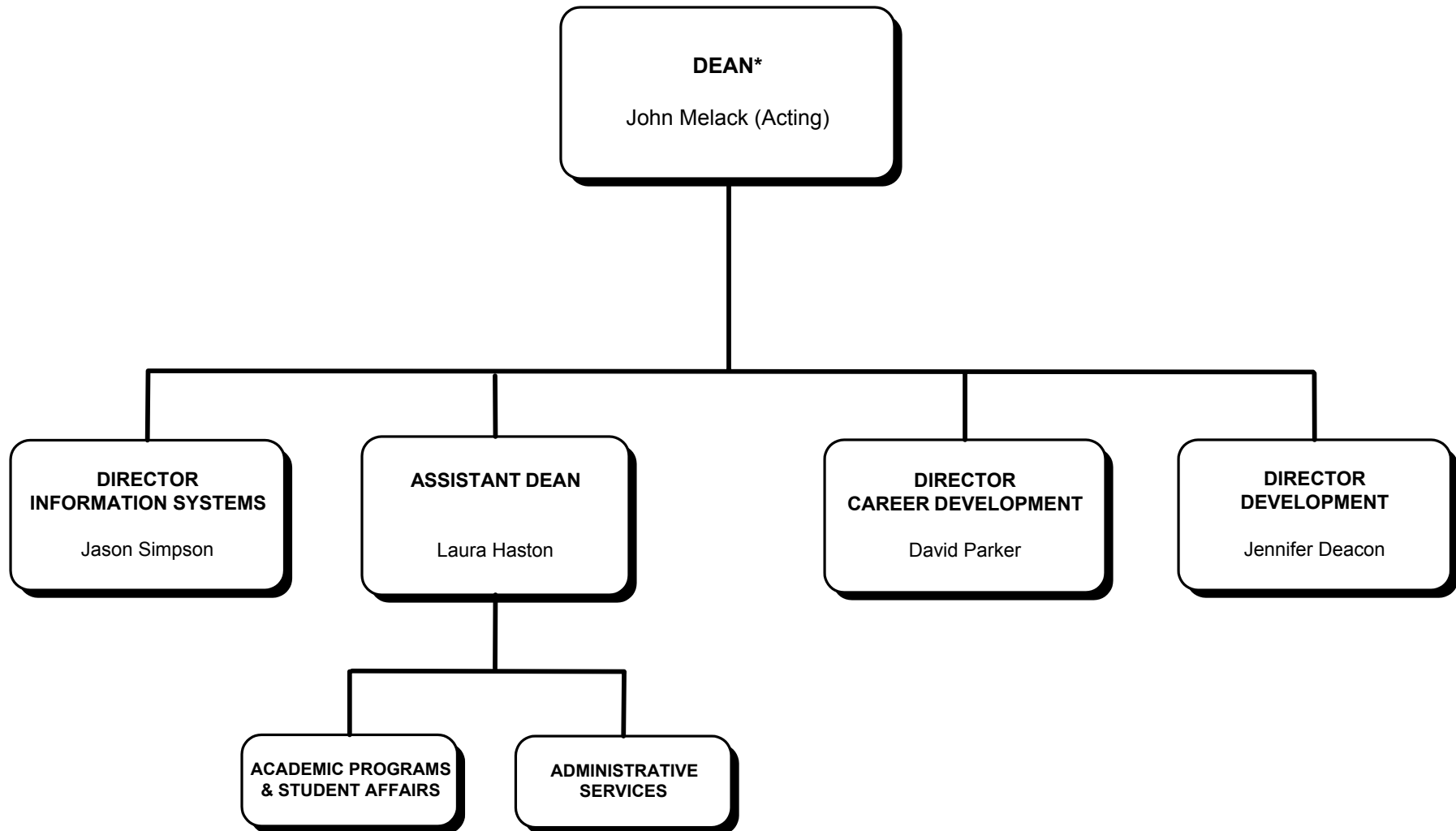
DIVISION OF SOCIAL SCIENCES



COLLEGE OF LETTERS AND SCIENCE STUDENT ACADEMIC AFFAIRS UNDERGRADUATE STUDIES



DONALD BREN SCHOOL OF ENVIRONMENTAL SCIENCE AND MANAGEMENT



**Ernst von Weizsäcker (January 2006)