



November 2007

2007-2008 Events Calendar

Date	Event	Location/Contact
Nov. 9—11	UNR Ski Swap at Livestock Events Center	Ken Simpson jksimp@msn.com
Dec. 8	Race #1—SL Holiday Party	Northstar Debbie Stewart gwstewart@prodigy.com
Dec. 9	Race #2--GS	Northstar
Dec. 13—17	3 rd Annual Keystone Nat'l, CO	Nancy Ellis Keystonenationals@sbcglobal.net
Jan. 5, 2008	SL Race Clinic	Paul Laudenschlager plaud@cebridge.net
Jan. 12	Race #3—SL	Sugar Bowl
Jan. 13	Race #4—GS	Sugar Bowl
Jan. 19—26	Far West Ski Week—Whistler	Debbie Stewart gwstewart@prodigy.com
Feb. 2	Race #5—SL	Diamond Peak
Feb. 3	Race #6—GS	Homewood
Feb. 17	GS Race Clinic	Paul Laudenschlager plaud@cebridge.net
Feb. 23	Race #7—SL	Northstar
Feb. 24	Race #8—GS	Northstar
Mar. 1	Super G Clinic	Northstar
Mar. 2	Race #9—Super G	Northstar
Mar. 14	NorCal Clinic	Sugar Bowl
Mar. 15—16	NorCal Championships	Sugar Bowl
Mar. 22—23	Sierra Corporate Ski Challenge Alpine Meadows	Bob Ellis rellis9681@aol.com
Apr. 4—6	Far West Championships	Mammoth

Visit the Sierra Council web site for
updates and changes
www.sierraleague.com





Board Members

President: Pavel Bosin

408-685-6470

president@sierraleague.com

Vice President: Jo Simpson

775-787-7556

jo_simpson@sbcglobal.net

Secretary: Beth Perryman

775-322-5805

slabanshee@aol.com

Treasurer: Coralie Burgess

530-550-8880

coralievm@aol.com

VP Travel: Debbie Stewart

559-734-9294

gwstewart@prodigy.net

Statistician: Alex Mikhailov

alexm_ca@yahoo.com

Newsletter: Nancy Ellis

530-582-0566

nancyellis2@sbcglobal.net

Webmaster: Steve Hilliker

jurassic_man@hotmail.com

Logoware: Barbara Bryant

530-550-9452

membership@fwsa.org

Race Chair: Kris Buttenberg

775-851-0696

Tafaril@earthlink.net

Race Scheduling: John Manter

775-831-6667

jmanski@aol.com

Race Practice: Paul

Laudenschlager, 530-582-9593

plaud@cebridge.net

Head Gatekeeper: Ted Mori

775-267-5046

skidad@charter.net

A Message from Pavel

Greetings Friends,

The Sierras are covered with snow and we are eagerly looking forward to the new season!

Our Board of Directors met twice in July and October and have been working hard to bring you a season of fun and interesting events. I encourage you to browse this web site, check out our newsletter, and calendar of events. You can participate in nine(!) Sierra League races this season.

Sierra Council will be represented by a group of over 90 skiers at the FWSA Ski Week in Whistler, BC. There is a wait list at this time for those interested in joining this group. See details on the Travel page of our website or in this newsletter. Our Holiday Party will be at Northstar Timbercreek restaurant. The party costs under \$50 and you will also get a lift ticket, which you or your family and friends can use throughout the season with some restrictions.

We are working on special discounts to our members on equipment purchases, boot fitting, and ski tuning services. Our long time sponsors at Reno Mountain Sports will treat you with the special deals. Ken's Bike & Ski (www.kensbikeski.com) offers us spectacular discounts on new racing gear. You can browse their online catalog, and then see up to 50% discount on selected 2008 models when you apply our promotional code. Contact me or your club president for this promo code.

We hope to see you soon at our events and races, where everyone has fun competing with the skiers of their ability level.

Pavel Bosin

Sierra League & Council President



WHAT: The first annual Sierra Corporate Ski Challenge will be held March 22-23, 2008 at Alpine Meadows Ski Resort. Members from corporations, businesses, clubs, and recreational groups are invited to enter teams to race in this challenging and fun event. Includes 2 days of racing (2 runs each of slalom and giant slalom), Saturday Après Ski Party, & T-Shirt. A portion of proceeds will be donated to local charities.

TEAMS: 6 people per team— 2 racers must be Women, Veterans (50 and over), or Juniors (under 18). Racers must be associated with the group they represent for at least 90 days.

AWARDS: Medals for individual places in men's and women's classes for Juniors, Open (ages 18-49), and Veterans. Plaques will go to the top three teams. Assorted other prizes for winners.

REGISTRATION: \$475 per team.

FOR MORE INFORMATION AND TO REGISTER:

Bob Ellis, Race Director, (530) 414-4270

Email: rellis9681@aol.com

Additional information on the Sierra League Website: www.Sierraleague.com

Member Clubs and Contacts

Cabernet Ski Race Club

Donn Bryant, President
gsracer@cebridge.net
530-550-9452

Capital Ski & Sport Club

www.capitalski.org
Rich Fullenbach, Racing
capitalskiinfo@yahoo.com

Castro Valley

Ralph Sherman, President
shermescape47@yahoo.com
925-449-7041

Code 3

Jim Sommer, Racing
sommerskier@aol.com
775-322-5805

Las Vegas Ski Club

www.lasvegasskiclub.com
Mark McNeil, President
infor@lasvegasskiclub.com

Reno Ski & Rec

www.Renoskiandrec.com
Ken Simpson, Racing
775-787-7566
jksimp@msn.com

RU SKI Club

Pavel Bosin, President
pavel@bosin.net
408-685-6470

Sacramento Fagowees

www.sacramentofagowees.org
Andrea Woelfle
andreajew@sbcglobal.net

Sequoia Ski Club

Debbie Stewart, President
gwstewart@prodigy.net
559-734-9294

Sugar Bowl Ski Club

www.sugarbowlskiclub.com
Steve Peterson, President
president@sugarbowlskiclub.com

Tahoe Rat Pack

Mark Lilly, President
marklilly@aol.com
530-318-8250

Top Gun

Contact to be named soon

UNR Ski Swap—Nov. 9—11

Attend and Volunteer *By Jo Simpson*



Sierra Council member club Reno Ski and Recreation is looking for a few good men and women to staff the University of Nevada, Reno, ski swap on Nov. 8-11. Volunteers are needed to check in equipment on Nov. 8-9 and to staff the swap Nov. 10-11. It's a great opportunity to look for bargains in clothing and equipment and to help the UNR Ski Teams.

The swap provides a substantial part of the competition expenses of the UNR Ski Teams. Sierra Council will have information at the swap to encourage greater participation in racing and other Sierra and FWSA programs, as well as the copies of the FWSA *Skier's Guide*. To volunteer, contact Ken Simpson, jksimp@msn.com, 775-787-7556.

Other Area Swaps

Nov. 9—11 12th Annual Bay Area Ski & Snowboard Show

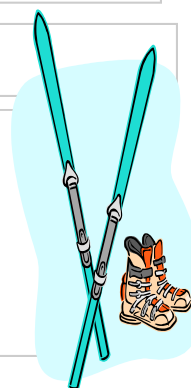
408 S. Almaden, San Jose \$15 Adults; \$5 ages 6-12

www.bayareasnshow.com

Look for Bay Area Snow Sports Council's Booth

Nov. 17—18 6th Annual Sacramento Ski & Snowboard

Show Cal Expo www.sacsnow.com



Race Passes for 2007-2008



Race passes for the 2007-2008 season will be \$100/person and entitle you to 9 races (*Sierra Corporate Ski Challenge is not included*). Guest racers pay a drop-in race fee of \$20 (cash or check) and must sign a waiver. Registered racers can purchase discounted lift tickets on the day of the race.

This year's gate keeping fees will be \$20 and will be refunded once you fulfill your gate keeping duties. These fees are due with your race fees and waiver forms. The waiver forms from the resorts will be available soon on the Sierra League and Council website (www.Sierraleague.com). Contact your club

race chair for more information on this year's racing program and to pay your fees.

Race Registration Changes: Help us speed up the registration process and avoid registration errors by registering on-line. You are encouraged to register on-line even if you have not paid in advance nor submitted all waivers. Go to the website www.sierraleague.com, open the registration page, and start registration. You will get a confirmation if everything is complete and paid, and that you can proceed to the start gate. You will get a prepared race entry form if payments or waivers are missing. Print out the race entry form and bring it to the morning registration. ***On-line registration will be open until the night before the race.***

Free Lift Ticket to NorthStar with Holiday Party Sign-up

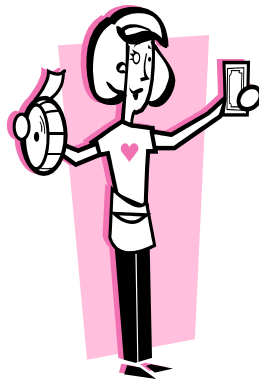
Sierra Council 2007 Holiday Party

The annual Sierra Council Holiday Party will be Sat., Nov. 8th at Timbercreek Restaurant located at Northstar at Tahoe. The price is **\$49.50**, which includes a holiday buffet dinner, no host bar, **FREE** lift ticket, raffle, and much more! Seating is limited, so don't delay in signing up for this fun event. Look for the holiday flyer and registration form in this newsletter. Discounted group lodging is available in the Northstar Village—lodging information is included in this newsletter.



Sierra Council Members at the 2006 Holiday Party

Bring a Raffle or Auction Item



The holiday party features a raffle and silent auction. Everyone is encouraged to bring something! Suggestions include: *bottles of wine; gift certificates to restaurants, theaters, bookstores, and ski shops; ski clothing such as gloves, tee-shirts, socks, hats, and sweatshirts; lift tickets; gift cards to Target and Home Depot; and home-made baskets that have a theme such as pasta basket, spa basket, movie basket, chocolate basket, or wine basket.* Really popular items include those donating services or willing to put on an events such as *ski lessons, tax services, 2 hours handyman help, hair cuts, manicures, waterski trip for 2, hot tub party for 6, wine tasting and dinner for 10.* Be creative and join in with friends to donate items. The raffle and auction benefits Sierra League and Council and provides a fun, social event for the participants!



Keystone Nationals—Dec. 13-17, 2007

There's still time to sign-up for the Keystone Nationals Race! This is the only national race for recreational racers. Check the website: www.keystonenationals.com for information and registration forms. Contact Nancy at Keystonenationals@sbcglobal.net or (775) 338-3438. The deadline for registration has been extended to **Dec. 3, 2007.**

Websites of Interest:

Far West Ski Assoc: www.fwsa.org

Far West Race Assoc: www.fwra.com

Far West Masters:

www.farwestmasters.com

National Ski Council Federation:

www.skifederation.org

US Ski Team: www.uskiteam.com

US Ski & Snowboard: www.ussa.org



Nancy Ellis zip trekking at Whistler/Blackcomb last year

FWSA Hot Sheet—by Barbara Bryant



You're invited to join the FWSAnews group at Yahoo! Groups. FWSA sends a "FWSA Hot Sheet" about once a month with short bullet points of information about FWSA with links to the website. The bullet points will also include the latest information on FWSA travel.

You can unsubscribe at any time. To protect privacy, your email address will not be visible to other members of this group and only a few moderators will be allowed to post messages. Your email address will not be used by any other group or sold to anyone. Here are the three ways to join:

1. Go to: <http://sports.groups.yahoo.com/group/FWSAnews/>
2. Or www.fwsa.org, click on FWSA News, click on subscribe
3. Or contact membership@fwsa.org and the FWSA VP of Membership will add your email address to the newsgroup.

ZIPTREK

Tuesday, Jan. 22nd is FWSA's Council Day!!!

Experience the exhilaration...Experience the Majesty... Achieve personal challenges...Enjoy Sierra Council's ZIPTREK ECOTOURS group tour Tuesday AM!

You won't want to miss this fun adventure if you're going to the FWSA trip to Whistler/Blackcomb. Registration deadline for signing up is **Nov. 30th**. Complete the registration form in this newsletter and send to:

Debbie Stewart, VP of Travel
430 S. Church St.
Visalia, CA 93277

Sierra League Gets New Racing Medals—by Jo Simpson

Winning Sierra League racers will receive newly redesigned medals this racing season. The medals will feature our Sierra League and Council logo, and will be a svelte 1-1/2 inch diameter with the requisite ribbon for wearing at the awards ceremony. Medals are awarded to the fastest skier in his or her class, and depending on the number of racers in the class, a second and third place is also awarded.

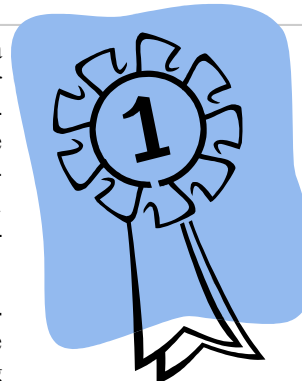


Apply Now for FWSA Awards—by Jo Simpson

Sierra Council Club Presidents, Newsletter Editors and Webmasters, Sierra Council board members and club contacts—apply **NOW** to enter your newsletter, website, and club for a Far West Ski Association Award. This is a wonderful way to honor the hard work your members are volunteering to do to make your club successful. Some of our Sierra Clubs have very attractive and informative newsletters and websites that should be highly competitive in the competition. It would speak well for your club and for Sierra Council if we have entries and winners in a competition of this level.

There is a very short window of opportunity to apply. **The deadline is November 15** for newsletters and websites, but all you need to submit by that date is the entry form. Typically, the deadline is Sept. 30, and the information is out during the summer, but changes in the criteria for the awards and in the Far West organization delayed posting of the application forms to the web this year. You can access the forms at this website address: www.fwsa.wbees.com/page/page/689624.htm. As part of your entry application, you are also asked to provide the name of someone who would be a member of the judging committee. Of course, the judge you submit would not judge the entries in your category.

If you have questions about applying for the awards, contact Fran Long, FWSA VP Council Services, Email: fancat2007@sbcglobal.net, phone: 805.238.1375. You are also welcome to contact Jo Simpson at Jo_simpson@sbcglobal.net for further information.



Need People to Promote Racing & Council Activities

Sierra League and Council needs a **LOT** of good men and women to distribute the new brochure and business cards to promote race participation and other council activities.

Carry a few of the new business cards with you to hand out when you encounter skiers. Opportunities exist with doctors, dentists, insurance agents, professional colleagues, and co-workers. Volunteers can also post the cards and brochures on supermarket and coffee shop bulletin boards. Our goal is to increase the number of participating racers. Increased participants make the competition more interesting and keep our participation costs at a reasonable level.

For copies of the cards or brochures, contact Jo Simpson, jo_simpson@sbcglobal.net or 775-787-7556.

**2008 FWSA Convention
Bellevue, WA—June 5—8**



Travel



FWSA WHISTLER TRIP—January 19-26, 2008—\$1,010

The FWSA Ski Week will be held in Whistler, British Columbia, Canada. Nestled in Canada's spectacular Coast Mountains, just 75 miles north of Vancouver. The largest ski area on the continent, with 7000 acres of skiable terrain, more than 200 trails and 12 massive alpine bowls, including three glaciers. Currently this trip is full and those interested in going will be put on a wait list. Contact Debbie Stewart, VP Travel, for information: gwstewart@prodigy.net

FWSA EUROPEAN TRIP TO LES TROIS VALLEES, FRANCE—March 7-15, 2008

Far West goes to La Tania in the center of the world's largest ski area between Meribel and Courchevel, France. 200 lifts, 540 square miles of terrain. Basic package \$1,390 per person double occupancy. Contact Norm Azevedo at 925-944-9816 or email: fwsaitravel@sbcglobal.net.

FWSA ALASKAN CRUISE—June 8—15, 2008

Following the FWSA Convention in Bellevue, Washington, on Sunday afternoon, June 8th, FWSA members who sign up for the trip, will be sailing on Norwegian Cruise Line's, "Norwegian Pearl" which will be leaving from Seattle, Washington. The cruise will go through the Inside Passage, Juneau, Skagway, Glacier Bay, Ketchikan, Victoria, and return back to Seattle. Go to the website: www.cruisecompany.com/fwsa

FWSA GREEK ISLE TRIP—October 1—17, 2008

Athens, Rhodes, Crete, Mykanos, and Santorini are highlighted on this trip. There's an optional extension to Turkey. Contact Norm Azevedo 925-944-9816, or email: fwsaitravel@sbcglobal.net



Habervision is a sponsor for the FWRA. Save **50%** off retail prices for polarized sunglasses and ski goggles. Go to the website: www.habervision.com. Enter the affinity member code: **FWRA** giving credit to FWRA for your purchase.

Thanks to Dave Garner of Reno Mountain Sports for his sponsorship of Sierra League and Council. Please visit Reno Mountain Sports for your skiing and racing needs. www.Renomountainsports.com



RACERS EDGE
Ken's
BIKE + SKI
 650 G st. Davis Ca.
 (530)758-3223
www.kensbikeski.com
 Promotional code: **Speed Racer**

Ken's Bike & Ski would like to invite your club to check out Racers Edge. Racers Edge offers your club the opportunity to buy race skis, bindings, and boots at a special price offered only to racers. Racers Edge is a great source for racing and tuning questions. Racers Edge has detailed videos and explanations of race technique and ski tuning. All race form prices will only be offered to ski club members. Visit Racers Edge for the **BEST PRICE**, and **BEST SELECTION** from an expert staff with years of racing experience.

Travels in Tibet—

Written by Michael O'Connor, Las Vegas Ski Club
Photos courtesy of Joe Loader, Reno Ski & Rec

Sixty burgundy-robed Buddhist monks sat on the bare floor in the lotus position, chanting in unison: *Om ma ni pai me hong* (Bless all living things). The Jokhang Temple is Lhasa's most venerated shrine. Penpa, our local guide, assured us that we were rare witness to a most sacred ceremony. Welcome to Tibet.

It was our second stop in a whirlwind 14-day, five-city tour of China and Tibet, sponsored by the Far West Ski Association and hosted by China Focus.

Lhasa, the capital of Tibet, sits at a lofty 12,000 feet above sea level. Driving west toward Mount Everest, we climbed to 15,800 feet and staggered off the bus. Hiking the last 100 meters of vertical to the crown of Kambala Pass, we gasped for air and gazed down on the cerulean waters of Lake Yamprog. Breathtaking indeed.



The industry has good guides and bad guides, and a very few are simply outstanding. Forrest from China Focus fit the bill here. Our constant companion for the entire fortnight, he was informative, amusing, ebullient and a friend to all. A real treasure.



In Beijing, we traversed the famed Tiananmen Square, where in 1989 a lone dissenter stood valiantly in front of a Chinese tank.



We visited the hallowed grounds of the Forbidden City and the Summer Palace. On the northwest fringe of the capital city, we climbed the 1774 steps of the Great Wall, enrapt by this ancient marvel.



Traffic is a veritable nightmare in China's key cities. The drivers are dreadfully mad and dangerously aggressive. Not to worry, our local guide in Xi'an assured us, as we had the number two bus driver in the company. The number one driver, he went on to say, was still in the hospital.

In 1973 a local farmer was digging a well on his farm in Central China. His shovel struck something hard. Behold the eighth wonder of the world—the 2200-year-old Terracotta Warriors of Xi'an. Following a 30-year archaeological dig and some major reconstruction, the Warriors once

again stand tall for the entire world to see.



Chengdu City found us at the Panda Research Institute, where dozens of the endangered mammals dined on bamboo shoots, posing obediently for our cameras. Even the reclusive Red Panda afforded us a rare glimpse.

Our expedition ended in China's most populous city, Shanghai, located on the Yangtze River Delta. Home to 18 million souls, the city vibrates during the day and shimmers at night. After being captivated by the Chinese Acrobatic Troupe, we waltzed along the Bund waterfront, then took the revolutionary MagLev train to the airport. The 18-mile ride took less than eight minutes as we red-lined at an astonishing 270mph. Hang on!



September was coming to a close; so was our journey. It was time to go home.

By Michael O'Connor
Las Vegas Ski Club



**3rd Annual Keystone Nationals
December 13-17, 2007
Keystone Resort, Colorado**



REGISTRATION DEADLINE: Dec. 3, 2007—New Date

The Third Annual Keystone Nationals Race Challenge is being held at Colorado's Keystone Resort December 13 – 17, 2007.

The Keystone Nationals is a dynamic recreational race competition, open to all Ski Club and Ski Council racers of all ability levels, as eleven different competition classes are offered for both men and women. The Race Challenge includes a qualifying race, giant slalom, and a slalom race, being held on Keystone's advanced race arena, *Go Devil*, accessed via the Peru high speed quad chairlift at the Mountain House Base Area.

The **Schedule of Events** kicks off with a hosted Welcome Party, three days of races, and culminates with a Cocktail Reception and Awards Dinner Banquet. Top racers are recognized and presented with medals in each class. The coveted Keystone Council Cup is awarded to the Nation's top Ski Council with the best racers scoring the highest cumulative points throughout the event!

All Ski Club and Council racers and non-racers are invited to attend! **Register now!** Build a Club Trip around the event and turn this into an early ski season get-away! **Keystone Nationals Packages** are available, with the complete competition package starting from \$559 per person. Keystone offers a great variety of lodging packages to choose from.

A **Race Training Camp** option is available immediately prior to the Race Challenge, for one or two full days. Keystone Resort will provide trained race coaches with no more than eight racers per coach. All ability levels are welcome!

The Bay Area Snow Sports Council is the current guardian of the Keystone Cup after coming out on top last year. A ceremonial hand-off was conveyed from the Milwaukee Metro Ski Council, the first Ski Council to win the Cup in 2005. Which of America's top race councils will win the 3rd Annual Keystone Cup?

For more information:
Call Nancy at Keystone Nationals
775-338-3438
Email: keystonenationals@sbcglobal.net
Website: www.Keystonenationals.com



Date: Sat. Dec. 8th

Racing & skiing 8:30-4

Cocktails 5:30

Dinner 6:30

Sierra Council 2007 Holiday Party

***Come join the FUN!
SKI practically for FREE!
Ski all day... party all...?!***

Tell your friends!!!

**Send your check by:
Nov. 24th!**

Seats are limited!

**There will be no last minute
same day sales!**

**At *TIMBERCREEK*
*RESTAURANT***

~ NORTHSTAR at TAHOE

Cost \$49.50 per person

**Includes: Holiday buffet
dinner, no host bar, FREE
Lift ticket* (worth 70.00+),
raffle and much more...**

(sorry no senior discounts for this event)

***Lift tickets will be passed
out in Meeting Room near
Timbercreek 8:30-9 am**

***Discounted Group lodging
available in the Northstar
Village. Mention "Sierra
Council Group"***

**Call Sharon 530/562-2287
Or Nancie 530/562-3565**

Complete Registration Form-page 2

**Make check payable to:
Sierra League**

**Send to: Debbie Stewart, VP of Travel
430 S. Church St.
Visalia, CA 93277**

Phone: 559/734-9294

Email: gwstewart@prodigy.net

Sierra Council
December 8, 2007
Holiday Party
Registration Form

NAME _____ Ski Club Name(s) _____

NAME _____ Ski Club Name(s) _____

ADDRESS _____

CITY _____ ZIP _____

HOME PHONE _____ WK PHONE _____

CELL PHONE _____ PAYMENT AMOUNT \$ _____

E-MAIL ADDRESS _____

EVERYONE IS ENCOURAGED TO BRING A RAFFLE or AUCTION PRIZE.!!!

PLEASE PROVIDE DETAILS OF YOUR DONATED ITEM including Value:

MAKE CHECK PAYABLE TO: SIERRA LEAGUE

Return this form and payment to: Debbie Stewart, VP of Travel

430 S. Church St.

Visalia, CA 93277

E-mail: gwstewart@prodigy.net

phone: 559/734-9294

NORTHSTAR AT TAHOE RESORT

WINTER 2007/08

LODGING DESCRIPTIONS –

Preview units: NorthstarAtTahoe.com/accomodations.asp

Village Room

Standard hotel-type room. Private bath, 1 or 2 queen beds. Located in the Village. Daily maid service. No fireplace, no kitchen. Elevator-served. Smoking & non-smoking rooms and all have decks.

Village Loft

Open loft bedroom with 1 or 2 queen beds; private bath; full kitchen private deck; gas fireplace. Located in the Village at the base of the mountain. Daily maid service. Elevator-served. Smoking & non-smoking rooms.

Studio

Open room, most with queen Murphy bed (wall bed). Full kitchen. Gas fireplace. Deck. One bath. All are on second or third level (no elevator). Located in Aspen Grove. 1/4 mile to Village.

1 bed/1 bath

One bedroom with one queen bed. One bathroom. Kitchen. Washer/Dryer. Fireplace. Some decks. Most within walking distance to lifts. Located ½ mile from Village.

2 bed/2 bath

One queen bed and two twins. Two bathrooms. Kitchen. Washer/Dryer. Fireplace. Bedrooms downstairs, living area upstairs. Located 1/4 to 1 - 1/4 miles from Village.

3 bed/2 bath

One queen, two twins, third bedroom may have queen, double, or two twins. Kitchen. Washer/Dryer. Fireplace. Deck. Two baths. Multi-level. Located 1/4 to 1 - 1/4 miles from Village.

4 bed/2 bath

One queen, two twins, third and fourth bedroom may have queen, double, or two twins. Kitchen. Washer/Dryer. Fireplace. Deck. Two baths. Multi-level. Located ¼ to 1-1/4 miles from Village

GROUP LODGING RATES

UNIT TYPE	ROOM OCCUPANCY	RETAIL RATES	Nov 16 – Dec 19 & Mar 30 – Apr 14	*HOLIDAY RATES	WEEKEND Jan. 3 – March 29*	MIDWEEK Jan. 3 – March 29*
VILLAGE ROOM	2	\$239	\$143	\$279	\$215	\$167
VILLAGE LOFT	2	\$325	\$195	\$375	\$293	\$228
STUDIO	2	\$206	\$122	\$235	\$184	\$143
1 BDRM/1 BATH CONDO	2	\$279 - \$315	\$167	\$319 – \$365	\$251	\$195
2 BDRM/1 BATH CONDO	4	\$355 - \$415	\$213	\$405 – \$479	\$320	\$249
2 BDRM/ 2 BATH CONDO	4	\$385 - \$445	\$233	\$445 - \$515	\$350	\$272
3 BDRM/2 BATH CONDO	6	\$485	\$291	\$555	\$437	\$340
4 BDRM/2 BATH CONDO	8	\$575	\$345	\$655	\$518	\$403

Rates are per unit, per night. A two night and five unit minimum is required.

Rates do not include 10% lodging tax, 1% housekeeping gratuity, and \$5 per condo per night resort fee.

All *Northstar* Resort guests receive complimentary use of our Swim & Racquet Club. Free on-site shuttle 8am-9pm.

(*Holiday dates are Dec. 20, 2007 – Jan. 2, 2008, Jan. 18-21, 2008, & Feb. 15-23, 2008)

Rates quoted above are only valid until 30 days prior to expected arrival date.