

SHAVINGS

NEWSLETTER OF THE WOODEN BOAT ASSOCIATION INC. VICTORIA
Reg. Inc. No. A0022538U Website: www.woodenboat.asn.au
Volume 20 Number 8 October 2010

If you have not paid your subscription for the new year, this will be your last edition of *Shavings*. If our records show that you are not financial, there will be a sticker in the space to the right.

President's Report

There are lots of things happening happening in October. The first on the list is the *Working with Wood Show* at the Melbourne Showgrounds, from October 15 to 17. We need more boats and volunteers over the weekend, as I am aiming for twenty boats of all sizes! If you haven't been before, this is a huge and very interesting display, with all facets of wood manufacturing on show, from pens to furniture, to our boats. The organisers are allowing us to create a sizable boat display as a focus area of their exhibition. There are many woodturners, scrollers, carvers associations, huge fitches of timber bigger than you can carry and tools, tools, tools for all to wonder over and buy! Anything and everything to do with timber. Tickets are \$15 each and parking on site is \$5, but truly well worth it, both for the first timer, and regular too. Any enquiries, please contact me direct on 0408 033 573.

I visited Rod Martin at his "Steam Engineerium" business last week with Tim Horton of the MHAV who was working at *Puffing Billy's* Open Day in Emerald. Rod is heavily involved with the national steam society and has an engineering workshop that GMH would be proud of, containing steam engines of all sizes for boats, trains and boats but I couldn't see a plane engine anywhere. He probably has plans for one somewhere!! Must invite him along one night when the weather is cold.

The committees of APYC and WBA are organising the inaugural "Meet the Neighbours" Day on Sunday 24 October. This informal but highly competitive meet and greet will include a challenge sail around the island in both Optis and Corsairs, a demonstration of wooden boat synchronized sailing, blessing of the fleet and more. Some minor challenges might include - one armed sailors, blindfolding of skipper, reverse sailing, egg and spoon sailing, don't spill the wine sailing, etc. All types of Wooden Boating craft will be displayed including models, canoes, dinghies and larger craft. There will be a mini Nautical Olympics for land lubbers and kidlets with slightly unusual rules and regulations followed by a well deserved celebratory BBQ with drinks at Bar prices. The overall winning club will be presented with the Prestigious Inaugural "King of the Lake Cup" presented by a famous Maritime personality. The club that is unlucky to gain 2nd place will watch their No 1 Committee member "Walk the Plank" and search for the Holey Sail Cup as their only prize.

The Barwon Heads trip was a great day out – many thanks to Brian and Robyn for organizing the event. Brian's report appears elsewhere in *Shavings*.

Last week we were invited to the *Mission to Seafarers* Art Prize and Exhibition. Several members were able to attend. The MHAV presented a cheque for \$500 to the best Victorian painting representing Maritime Heritage – an amazing depiction of the Mahogany Ship sailing into the mist by Julian Bruere. This year the exhibition is open for public viewing from Saturday 9th – Sunday 31st October, at the historic seafarers centre at 717 Flinders Street, Docklands from 12 noon – 7.00 pm Wednesday to Sunday. Gold coin donation for entry. Look out for the great value postcards of the paintings, which are available for \$1.50 dollar each.

Highlights of October are the MHAV Annual GM at the Port Education Centre Lorimer St Port Melbourne on Wed 27 October 7.30 with Garry Kerr launching his new book *The Pearl Shell Divers, Australia's Deadliest Catch*. The Blind Bight Boat Owners Club together with the Maritime History Preservation Society of Eastern Victoria is hosting a Classic Model Boat Display and swap meet on 16 and 17 October. Contact Trevor Davidson on 0428 371 841 for more information. Both not to be missed!

The *Alma Doepel* was 107 years old last week and I was invited to her birthday party at Royal Yacht Club on Saturday night where over 100 people had a great night

The MHAV Xmas party is being held at the Seaworks Pirates Tavern on Thurs 25 Nov. Organise a table and enjoy the night with fine food, wine and excellent music.

The Anglesea Rowing Club are hosting their Centenary on New Years Day 2011 at Anglesea and we have been invited to attend and display our boats. This will be a great trip over the holidays and I hope we can send a few boats down there. Contact Peter Doyle on 0418 176 467 for more information.

The *Ballarat Begonia Festival* has invited us to display our boats on 12th, 13th and 14th March 2011 where there will be displays, stage entertainment, kids fun and of course lots of Begonias. The Ballarat Yacht Club may be involved with the mooring of yachts and/or sailing activities (water levels depending) on Lake Wendouree. Let's get involved!

The Timeline Fair is at Berwick Cheese factory Nov 20 and 21 and is Victoria's Major Historical Fair. A wonderful event showcasing the groups who live history in all its periods. *A fun day out for everyone.*

Safe Boating
Andrew Cohen

W.B.A. (Vic) Committee 2010 - 11

President	Andrew Cohen	9773 8624 - H	0408 033 573 - W
Vice President	Rob Ripley	5941 6834 - H	
Secretary	Chris Kelly	9480 5383 - H	
Treasurer	Richard Jackson	9898 4021 - H	
<i>Shavings</i> Editor	Jill Carroll	9802 7038 - H	
Librarian	Alan Chinn	9578 6418 - H	
Boat Manager	Tim Gay	0411 038 426	
Committee members	Brian Flewell-Smith	5278 9830 - H	
	Tony Remington	5944 3867 - H	
	Geoff Carroll	9802 7038 - H	
	Graham Signorini	9391 5621 - H	
	Peter Braithwaite	5931 3237 H	

W.B.A. (Inc) Calendar 2010 - 11

Sailing Days occur on the 4th Sunday of the month, usually commencing at 10.00AM. Club nights are held on the Wednesday preceding the sailing day, commencing at 7.30 pm at APYC. At least once a year the Club has a weekend sailing and camping trip. The Committee meets at 7.30pm on the first Wednesday of each month at APYC.

Sailing Days & Events 2010 / 2011

15 – 17 October Working With Wood Show, Melbourne Showgrounds. Contact Chris Kelly

**** Please note: There is no club night in October because of other activities**

24 October APYC/WBA : meet the neighbours fun day Details below

31 October Ratty Day at Werribee South. contact Andrew Cohen if you are interested

26 - 29 November Lake Nagambie: Peter Braithwaite – OOD details below

5 December WBA Christmas Party

27 February 2011 Rye. Sailing and putting off the beach

MEET THE NEIGHBOURS DAY

The committees of APYC and WBA are organising the inaugural "Meet the Neighbours" Day on Sunday 24 Oct. The informal but highly competitive meet and greet will include a challenge sail around the island in both Optis and Corsairs, a demonstration of wooden boat synchronized sailing, blessing of the fleet and more. Some minor challenges

might include- one armed sailors, blindfolding of skipper, reverse sailing, egg and spoon sailing, dont spill the wine sailing, etc. All types of Wooden Boating craft will be displayed including models, canoes, dinghys and larger craft. There will be a mini Nautical Olympics for land lubbers and kidlets with slightly unusual rules and regulations followed by a well deserved celebratory BBQ with drinks at Bar prices.

The overall winning club will be presented with the Prestigious Inaugural "King of the Lake Cup" presented by a famous Maritime personality. The club that is unlucky to gain 2nd place will watch their No 1 Committee member "Walk the Plank" and search for the Holey Sail Cup as their only prize

LAKE NAGAMBIE INFORMATION

The distance from Melbourne is approx 125 km and about 2 hours traveling time. The **Nagambie Lakes Leisure Park (03 5794 2373)** offers a 10% discount for group bookings. Individual members can make their own bookings but must book under the banner of the WBA in order to meet group booking criteria. There is a variety of accommodation available, from camping sites to cabins. Members must book individually, and if you haven't done so already, should be quick.

The Park has its own ramp and there is a public ramp available not far away. Both Mitchelton's and Tahbilk Wineries have great picnic areas. Tahbilk do have river bank space available with mooring stakes, at the foot of the cellar door and museum building. Tahbilk is about an hour's run up stream from the caravan park. The 150 year old winery is full of charm and the tasting room with nearby views over the river (and over where our boats would be moored) looks really good and is probably a good lead into lunch.

In the township of Nagambie there are a couple of pubs, several restaurants and the local Visitor Information Centre is located in a craft shop which serves the best coffee in town and has a jetty and mooring space on the Lake which we would be able to use.

Rates: Start at \$130.00 for 2 person cabin. Contact the Leisure Park at www.nagambielakespark.com.au for further information about rates for other sites in the park.

Contact Peter Braithwaite, OOD, to let him know you are interested, or have already booked. Ph. 5931 3237

Club Activities

EXPEDITION TO BARWON HEADS Sunday September 26

Sunday dawned bright and shiny although a little windy. There were a few brave souls (Melbourne based) at the launching ramp when the OOD (Geelong based) finally turned up at 1100 hrs. His late arrival made no difference as only two members had taken to the water. One in his small dinghy and our stalwart secretary who showed us all why he was silly enough to accept that office, by rowing, yes rowing, into the nether regions of Lake Connewarre. And that was before the OOD turned up!

There ensued a lot of talk about launching but the low tide and lack of familiarity with the Barwon River brought out the less adventurous attendees. I think playing lizards in the warm sun may also have had some influence, not to mention the hot cuppas and cake being handed around. The person who called the OOD to say they were on their way need not have bothered bearing in mind the lack of enthusiasm prior to mid day (apparently HE got lost). You could have saved the cost of the call, Pat.

More activity started to happen after lunch with the incoming tide. Graham Signorini disappeared up the river in his paddle wheeler followed sometime later by the OOD, his wife, Robyn El Presidente up front, or should that be forward. After motoring some considerable way upstream they came across Graham heading rapidly downstream. How he paddles the boat with a leg virtually in a sling is amazing. Do you think we should call in the stewards to check if he has a motor installed? Jim and Penny also headed off to explore the lake in their skiffs while Frank Raisin put Lindsay Symonds through its paces.

Although it was a bit windy it was an enjoyable, sunny day with a good roll up. I would expect more to attend this location next time now that we know more about the Barwon River and Lake Connewarre

Brian Flewell-Smith.



Several members took canoes to Barwon Heads



The jetty, with Lindsay Symons in the background

SEPTEMBER CLUB NIGHT REPORT

With over 20 members attending, Andrew welcomed Philippe Patacca of 'Build Wooden Boats P/L'. (<http://www.buildwoodenboats.com.au/>). Philippe has set up a factory in Preston where customers can purchase all the materials needed for boat building, and even rent an area in the factory to 'build-your-own-boat' under Philippes and another professional's supervision. He commenced with a slide-show briefing on the progress of building a 'Norwalk Islands Sharpie', and then presented a display of some the products - epoxy resin and marine paint systems, marine grade plywood, solid timbers, Wooden boat plans & kits, that are available at the premises. Philippe concluded with a Q&A, where members shared their and his experiences in some of the finer points in boat building.

Rob Ripley

WBA - East Gippsland News

2010 East Gippsland Branch Committee		PO Box 272 Bairnsdale	3875
Helmsman	(President)	Jenny North	5156 7863
Vice Helmsman		Bernard O'Kelly	
Number 1	(Secretary)	Dale Kilby	0400 642 009
Purser	(Treasurer)	Marion Gullickson	5156 7856
Signals	Shavings and Newspaper)	Dale Kilby (with help)	0400 642 009
Archivist	(Library)	Jenny North	5156 7863
Committee members		Barry North	5156 7863
		Doug Gullickson	5156 7856
		John Nicholson	5156 7183
Member to check books		Colin McArthur	

BRANCH REPORT

At the September Winter Talk we had **Boat Building Projects Explained**

Members enjoyed a BYO dinner followed by two speakers who entertained those present with the details of their boat building projects.

The first speaker was Faye Anderson, who spoke while showing a DVD on her project of building mini tugs. The first boat she built was the mini tug Sampson powered by a 20hp electric motor. Fay subsequently sold this

boat to the East Gippsland Shire who are using it for publicity. Our Melbourne members of the WBA are probably familiar with the boat as it seems to spend more time on the Yarra River than the Gippsland Lakes. Fay's next project Toot Suite was a really scaled down version of a tug being only 12ft long and powered by an outboard motor.

The second speaker was Bob Moore. The first boat he spoke on was Mareel, a Whilly Tern design by Ian Outred. It is fifteen feet long and based on a Shetland Island Dory. The boat Bob is now building is Sirema , designed by David Payne and based on a 17ft Sydney Snapper boat. It is strip planked using 30x10mm Paulowina timber.



Faye Anderson and Bob Moore looking at a model of Toot Suite, at a recent Wooden Boat Association meeting. She is a sister boat to Sampson which was purchased by the East Gippsland Shire Council and is being used for promotional purposes.



"Maree", a previous wooden boat built by Bob Moore

WBA – East Gippsland Programme 2010-11

November Sunday 14th – BYO BBQ at Progress Jetty. We want some trailer boats and some bigger ones at the jetty so please bring your boat along and encourage anyone else you know to bring their boat along as well. From about 11.00 am onwards

December Saturday 11th – Christmas BBQ at Jenny & Barry North's, 10 The Beacons Paynesville. Come by road or water – Bring your own meat and drink. From about 11.30 am onwards

January Saturday 15th & Sunday 16th An overnight cruise to Spermwhale head.

For members who wish to come for a day trip on the Sunday. Pick up at Progress Jetty 10.30 Booking essential – phone Doug 0429866290 or Barry. 0401000436

February Sunday 13th Progress Jetty. Because a lot of members will be in Tasmania a laid-back day is planned. BYO BBQ. From about 11.00 am onwards

March Saturday 19th and Sunday 20th Cruise to Nicholson. BBQ lunch Saturday. Dinner at the Pub. Sunday lunch at the Pub followed by the Jazz (at the moment they cannot confirm that the Jazz will be on). People welcome to come for any part of the weekend but numbers for the activities at the Pub required.



**Specialising in
the restoration
and building of
fine craft.**

59 Slip Road
Paynesville 3880

Phone and Fax: 03 5156 7085

Email: office@fhboats.com.au

Web: www.fhboats.com.au

THE ROLLING OF THE CRABBER

Conducted in the style of Ancient Egypt, the rollover of the crabber was a great success. Lots of rope and muscle power, preceded by careful planning with Geoff Divko, saw the crabber rolled over and back in its place on the strongback by lunchtime. It was a great WBA event, and all present lent a hand. The lunch that followed was well earned. Many thanks to all who assisted on the day, even to Will, who provided the entertainment after lunch. He never tyres!

Geoff and Jill Carroll



With the aid of ropes she was rolled and propped ...



until she came to rest right way up.



And then with muscle-power and ropes ...



she was dragged and lifted up the ramp to the strongback



And we could all stop for lunch



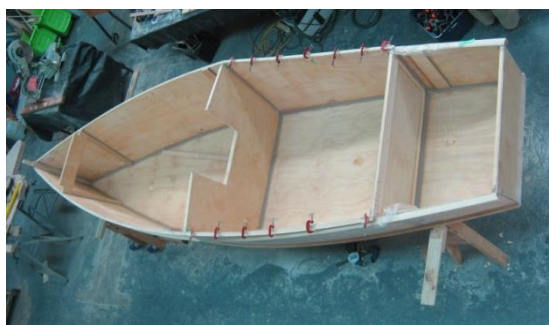
BUILDING A JIM MICHALAK AF3

Build Wooden Boats' main client project for the year so far has been a Jim Michalak "AF3" for Ken White in Canberra. Late in 2009, out of the blue I received a call from Ken, asking about Norwalk Islands Sharpies. He had seen NIS *Clancy* in action on or around Lake Burley Griffin and really liked her. He had also owned a Phil Bolger 'Micro', a nice boat to sail, but a pain to set up, take down and trailer due to its heavy mast and lead ballast. He wanted something that was fun to sail and easy to handle, both on the water and getting onto and off it – all-round good performance.

Suffice to say, we took on the project and it is now nearing completion. We just have the final coats of *Bote-Cote epoxy* and *Aquacote* undercoat and topcoat to apply (British Racing Green below the sheer clamp, Sand above and inside, and *TreadGrip™* non-slip paint on the cockpit floor), fit the rudder and sail hardware, and coat the mast and spars using the *Bote-Cote Clear System™*. We'll also be fitting leathers to the mast and spars to eliminate wear at the points of contact.

The AF3 – Specifications and construction method

The AF3 ("Alison's Fiddle #3") is a 16' x 5' lee board sharpie with a cuddy cabin,



Simple construction - only three fixed bulkheads - temporary bulkheads between BH A-B & B-C removed

weighing in at around 200kg with rig (sprit boom or balanced lug). It has a fairly typical sharpie hull form: near-vertical transom and sides (7.5degree inward slope), single chine, and flat bottom with considerable rocker – a "box boat" to

some. The reasonably narrow aspect ratio indicates it should have a good turn of speed in light to moderate winds, up to hull speed. The wide flat bottom gives it high initial stability and shallow draft, another typical feature of many basic sharpie



Forward fixed 'slot-deck' cover with slight arching so water doesn't pool.

designs. Hatches along the centerline mean that if she does go over, she won't be easily swamped. The lee-board arrangement keeps the cockpit and cabin floor uncluttered. All these features together will make it a very friendly and easy boat to sail - the experiences of other builders confirm that this is the case.

The plans call for four sheets of 6mm plywood, and two 12mm sheets of plywood. The sides, decks, transom and bulkheads are of 6mm plywood, framed with 19mm x 42mm battens. Ken wanted top quality materials from a trusted source, so we have used Australian plantation-grown Hoop Pine plywood and solid timber almost exclusively. Hoop pine is very similar to Douglas Fir (imported from the USA). However, it has a very tight straight grain which is not very pronounced, and no splits or knots. It is very dimensionally stable, stiff and very easy and pleasant to work. It is also very reasonably priced compared to Douglas Fir.

The only problem we ran into with materials was that the plans are based on imperial plywood sheets (8' x 4' or 2440mm x 1220mm). Marine grade Hoop Pine plywood sheets are made to the Australian Standard AS2272 and come in metric sheet sizes – 2400mm x 1200mm. This didn't seem like much of a problem initially, but the ply sheet plans are so efficient that we ended up having to use an extra two sheets of 6mm Hoop Pine to get all the components cut! Jim has clearly put a lot of thought into efficient use of materials.

The plans are lofted directly onto the plywood – a very straight forward process. The construction method enables the AF3 to be built without a fixed building frame.

- The hull sides consist of 2 sheets of plywood each, joined with a 75mm butt strap. We applied a strap of 75mm fiberglass to the exterior face, recessed about 1mm and filled with slightly runny BoteCote Filleting And Gluing



Affixing the laminated keelson with E-Glue. Lamination (2 layers) was done in-place with Purbond.

Powder mixture. We did this because the plans did not call for fibreglass on the hull sides which would have reinforced the butt joint.

- The three permanent bulkheads and the transom, plus two temporary formers between bulkheads A-B and B-C, are used to hold the hull shape while it is glued together. It can be built on the garage (or lounge room!) floor, or on a couple of saw horses to lift it up to a comfortable working height. Provided everything has been cut reasonably precisely and the floor or saw horses are level, the resulting hull is as near to perfectly aligned as is possible.
- Temporary fasteners (30mm and 40mm 8g bugle headed screws) were used to hold the structure together as it was glued.
- The 12mm thick hull bottom is joined in-situ with a butt strap, then glued to the chine logs.
- The bottom and transom are sheathed in 200gsm fibreglass cloth once the hull has been assembled.
- The mast, yard and boom are from Hoop Pine, laminated from two lengths each.
- Variation: To stiffen the bottom for better beaching and trailering, we fitted a 140mm wide x 20mm high external



Simple slatted bench seats. Note the upper leeboard guard & lower mounting rail on starboard side.

keelson, covered with 200gsm fibreglass cloth.

- Variation: To make it a tad more comfy to sail for extended periods, Ken asked us to fit simple slatted benches either side of the cockpit. A great idea I think.
- To finish off the whole package, Ken has ordered a custom-built trailer, designed by Rob Ayliffe of NISBoats. I am sure this trailer will enhance Ken's enjoyment by making it very simple to launch, retrieve and tow.

We used Boat Craft Pacific *Purbond* water-based polyurethane glue, and *Bote-Cote E-Glue*, a premixed 1:1 epoxy glue, for all gluing. All timber was coated with *Bote-Cote Epoxy* to seal and protect it. The final paint job will be done with *Aquacote* epoxy undercoat and polyurethane water-based top coat. We think these products are terrific. Not a single screw or nail is left in the boat – it is entirely glued together. The combination of glued joints with good sized fillets (20mm – 30mm radius), and fibreglass tape across the exterior of the joints, make the whole structure incredibly stiff. Plus, virtually no fumes or odour – no solvents are used in the products, and clean-up of the epoxy products is done using ordinary white vinegar. What could be simpler?

A well thought out design and high quality materials and products, combined with attention to detail during construction will enable a wooden boat like this little AF3 to have a long and useful life, and bring much enjoyment to its owner/s.

Happy sailing Ken!

Interesting links: AF3 design - <http://www.jimsboats.com/1jan10.htm>

Boat Craft Pacific products: www.boatcraft.com.au

(stocked by *Build Wooden Boats*)



Almost finished! Chris poses with his handiwork

Tudor Insurance Australia (Insurance Brokers) Pty Ltd

Specialists in hassle-free insurance for wooden boats

1st Floor, 9 Clyde Rd Berwick, Vic 3806

Postal Address: P.O. Box 256, Berwick Vic 3806

Contact: David Cooper

Phone: (03) 9707 3033

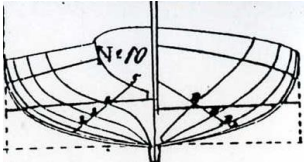
Fax: (03) 9707 4568

E-mail: davidc@tudorinsurance.com.au

Webpage: tudorinsurance.com.au



RICK MITCHELL SHIPWRIGHT & TRADITIONAL SAILMAKER



Rick can work alongside you for an hour or two to solve a problem, (none too small or too large), or take you from lofting to launching. He has taught boatbuilding to apprentices, as well as sailmaking.

Rick has worked on many heritage vessels from *Enterprize* to *Polly Woodside*, from *Duyfken* to *Sayonara*. Phone 0408 176 532

1858
2008 *Celebrating 150 Years*

C. BLUNT
Est. 1858
BOATBUILDER

150-156 Nelson Place, Williamstown. Vic
Ph (03)9397 2323 Fax (03)9397 5530
www.bluntboat.com.au

C. H. Smith Marine
Established 1884

Supplying the Melbourne and Australian community with quality marine electronics, boat parts and fishing equipment.

16 Langridge Street
Collingwood 3066
Phone: 03 9417 1077
Fax: 03 9416 1171
Web: www.chsmith.com.au

Everything you need to...

Build Wooden Boats™

Supplying wooden boat products, services & marine timbers

- We stock & sell a full range of Bote-Cote™ epoxy resin systems, powders, fabrics & supplies, Aquacote water-based polyurethane marine paints.
- Marine-grade plywood & solid timbers: Hoop Pine, Gaboon & Pacific Maple
- Silicone bronze screws, nails and rod. Copper nails and roves also available.
- Wooden boat plans & kits - Study plans from a range of designers, boat books, the full range of Bruce Kirby designed "Norwalk Islands Sharpies" high performance trailerable yachts - 18' to 43', and Iain Oughtred plans and kits.
- "Build-from-kit" service - assisted build, part-build or to completion - you choose.
- Floor space for your own project, small or large - per sqm/month. Call for a quote.

Workshop & retail shop now open
19 Bellevue Crescent, Preston, Vic
*** Phone & email orders happily fulfilled ***
Call Phillipe on 0430 786240 for info & orders
OR email: info@buildwoodenboats.com.au

Bote-Cote
EPOXY SYSTEM

The home of **NORWALK ISLANDS SHARPIES** & *BoatCraft Pacific* products in Victoria. **Dream it - Do it!**

The Boatyard

Ads in *Shavings* run for two editions and also the WBA website. Cheques should be made out to the Wooden Boat Association and sent to **The WBA, PO Box 77, Glenhuntly, 3163.**

Please note the following advertising costs: costs are free for WBA members. Non-WBA individuals are welcome to advertise for the cost of \$10.00 per 10 feet of boat. Boats 10' or less can be advertised for free. Add \$10.00 for an engine.

For example – a 20' sailing boat with outboard will cost \$30.00 to advertise (\$20.00 + \$10.00) for two (2) issues of *Shavings*, and for a place on the WBA website



Classic runabout

1950's or 60's-style runabout 3.9m on trailer (not registered) with a West Bend 18hp (forerunner of Chrysler) engine. Located near Paynesville **\$400.00**
OBO Ph. Joe Scull 03 5156 6997

For sale: Fireball class racing dinghy 16ft 3in length. Aluminum mast. Boat is solid but needs paint. Comes with all sails, wet suit, spares, and on a boat trailer. \$800.00 ONO
Contact: Dale Burnham 0418534129, or 97394238.



For sale: the oldest Spray in Australia, possibly the World. The original owner Mr Shaw met Joshua Slocum in Melbourne in 1896 & organized the blueprints from Boston to build his own Spray. Originally built as per Slocum's specifications but was extended to 45 LOD in the 1940's. The vessel is in USL Commercial 1E Survey – 35 passengers + 3 crew. We want her to go to a good owner who will maintain her carefully for many years before passing her on once more.
Contact: Randall & Diane Barrington 0411 368 130
\$285,000.00

For Sale
 Dinghy oars, wood, Gull, straight blade. \$25.00 per set
 Contact Andrew: 9773 8624

For Sale
 A Putt Putt full of charm and features:
 Timber varnished hull (clean skin-nil fibreglass) in excellent condition with matching timber oars.
 10ft long with a 5ft beam.
 Powered by a 3 horse power Blaxland Chapman Master pup – built by Orb Rose.
 Leather starting strap and hand bilge pump.
 Timber trailer – registered until 25th November 2010.
 Phone 0458 331 009 \$5,500 ONO



For Sale

Classic 4 metre day sailer. Row, sail or motor. Excellent 2 hp Yamaha. Very quick to launch, sail and recover single-handed. Registered tilt trailer with 11" alloy wheels and very good tyres. Hull by Sportscraft/Sydney circa 1963. Sails by Gail and Rimington. Hand-made, leathered and balanced oars with bronze rowlocks. Boathook, fender, fire extinguisher, anchor and custom-made boat-cover. All fittings are stainless steel and bronze. Price \$5500. Contact Graham Holmes ph (03) 5156 6813



For Sale: 12ft x 6ft 40 year old TYRO 12 Cunningham design in excellent condition. Refurbished 10 years ago and kept under covers since then. Minor woodrot in stern deck beam and a few seams opened but easily repaired. Very fast and easy to sail, lovely to look at. \$500. Boat at Albert Park at present. Phone Heather 0412 230 594

**REQUEST FOR HELP**

I am part way through building a 20 foot plywood trailer sailer and am looking for someone to assist me for a few days with fitting the cabin and topsides this summer.

In return I will be willing to assist with constructing some other boats please contact Mick Stevens on 0144 750 621

Membership Application or Renewal – The Wooden Boat Association, Victoria

Subscription for the year 2011: **\$50.00**

Mail to: The Treasurer, WBA, PO Box 77, Glenhuntly, Vic. 3163
or PO Box 272, Bairnsdale, Vic. 3875

New Membership Renewal of Membership East Gippsland Member

Name:

Address: Postcode: Email:

Phone: (H) (W) (Mob.)

Interests: (please circle) R/C, Model, Trailer, Rowing, Power, Sail, Canoe, Building.

“In order for you to use your boat at Association events, please complete the details on the current Boat Insurance you hold.”

Boat type Reg. No. Name

Insurance Co. Policy No. Expiry date

SHAVINGS

If undelivered please return to:
The Wooden Boat Association
PO Box 77, Glenhuntly, Vic. 3163

