

# CHAMBER NEWS

## INSIDE THIS ISSUE

|                                   |     |
|-----------------------------------|-----|
| Contact Us _____                  | 2   |
| Lunch & Learn, NeoTech _____      | 2   |
| <b>Ribbon Cutting:</b>            |     |
| Rose Gallery _____                | 2   |
| <b>Member Spotlight:</b>          |     |
| Balloontastic _____               | 3   |
| Lunch & Learn, Simpson _____      | 3   |
| Volunteer Opportunities _____     | 3   |
| 2015 Members _____                | 4-5 |
| New Members _____                 | 5   |
| <b>Member Spotlight:</b>          |     |
| The Run Around                    |     |
| Running Company _____             | 6   |
| Jingle & Mingle _____             | 6   |
| Shop With A Cop _____             | 6   |
| CJFD Seeks _____                  | 6   |
| JMCU Check Presentation _____     | 7   |
| CJ CARES Check Presentation _____ | 7   |
| Membership Rates _____            | 7   |
| <b>Member Spotlight:</b>          |     |
| Brook Auto Sales _____            | 8   |
| Jump Start Your Business _____    | 8   |
| Upcoming Dates _____              | 8   |

## CJ Christmas Parade Dec. 6

The Carl Junction Christmas parade will be Sunday, December 6 at 2 p.m. Those wishing to enter into the parade need to line up on Broadway Street, between the school buildings, at 1:30 p.m. No registration required, no prizes. Dress up your bicycle, hay trailer, tractor, etc. Call Mayor Mike Moss at 649-6370 or Bill Dunn at 649-7118 for more information.

## BRIDGESTONE FARM

Bridgestone Farm is a family owned farm that was started in the spring of 2006 with the planting of their very first Christmas trees. The Johnson family plants trees every spring and care for them throughout the summer months.

Bridgestone Christmas Tree Farm plants every tree by hand with the help from other family members and some of their close friends. Even though the trees are planted at the same time they grow to be different shapes and sizes which makes the search for your "perfect" tree such a treat each year.

Bridgestone Christmas Tree Farm has a hay ride that allows you to sit and take in the scenery of the



**FINANCIAL ADVISOR, JENNAFER JOHNSON**, with Edward Jones will be hosting a business after hours Tuesday, December 8, at Bridgestone Christmas Tree Farm located 3.7 miles north of Stones Corner, from 4:30 to 6:30 p.m. Bring your family and enjoy a hayride, fire, and other festivities, weather permitting. Cozy up in the barn where Christmas goodies, hot chocolate, and cider will be provided.



farm. A spacious barn allows you an area to warm up and an opportunity to browse the decorations on display for sale. Inside the barn you will also find hot chocolate and apple cider to enjoy.

Memories are made by local families who return each holiday season to create the family tradition of picking out their very own tree. Many area photographers set up for a day of mini sessions with their clients.

If you are interested in this please contact Bridgestone for more details at 417-529-8508.

Bridgestone Christmas Tree Farm is located at 9581 County Lane 251, Webb City, Missouri. They are easy to find at 3 3/4 miles north of "Stones Corner" on HWY 43.



**LUNCH & LEARN** - "How to Make Smart Phones and Mobile Devices Work for Your Business" was the topic of the November Lunch & Learn. The presentation was sponsored by NeoTech Solutions of Joplin. Owner David Endicott facilitated the educational workshop.



**ROSE GALLERY OF FINE ART** - The Carl Junction Area Chamber of Commerce conducted a ribbon cutting ceremony for Rose Gallery of Fine Art in Joplin on November 6. An open house was held in conjunction with the ribbon cutting, with several exhibiting artists on hand to discuss their work.

**CONTACT US**

**Carl Junction Area Chamber of Commerce**

"The area's fastest growing chamber! Come grow with us!"

Phone: 417-649-8846  
Fax: 417-649-6843

E-mail:  
cjchamberofcommerce@gmail.com

Website:  
CarlJunctionCC.com

Facebook:  
"Like" us on Facebook!

Follow us on Twitter:  
CJChamberOfCommerce



Connect with Your Chamber on Facebook, Twitter & LinkedIn!


**INTERNSHIPS**

Please contact Gary Stubblefield for internship opportunities with the Carl Junction Area Chamber of Commerce.



# The UPS Store®

PRINT - PACKAGE & SHIP - MAILBOX



WE ARE THE ONE STOP SHOP FOR ALL OF YOUR SMALL BUSINESS AND LOGISTICS NEEDS

Stone's Corner PLAZA (417) 659-8410 • 6031 N. Main Street Road | Joplin • (417) 626-7555 • 2401 E. 32nd Street

VOLUNTEER

The Carl Junction Chamber of Commerce currently has three committees that are seeking volunteers.

Capital Campaign Committee

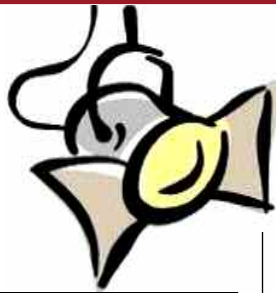
This committee focuses on the long-term financial needs of the Chamber. Committee Chairperson is Larry Warren, publisher of the Joplin Regional Business Journal. Contact Larry Warren at: 417-206-2228.

Business Expo Committee

This committee is planning the upcoming March 5, 2016 Business Expo. Committee Chairperson is Holly Hukill, owner of Joplin Floor Designs. Contact Holly Hukill at 417-659-8000.

Community Awards Banquet

This committee is planning the upcoming Community Awards Banquet. The sixteenth annual banquet will be held in April 2016, with date TBD by committee. The Committee Chairperson is Sharon Clark, Postmaster of the Carl Junction Post Office. Contact Sharon Clark at 417-649-7831.



MEMBER SPOTLIGHT: BALLOONTASTIC

Balloontastic offers custom balloon bouquets and centerpieces for any occasion, party, or event.

See Balloontastic for your home or office holiday centerpieces, office special events and trade show

booth decorations.

Balloontastic is owned and operated by Chon Triplett.

Consultation by phone or by appointment in store Monday through

Friday. Weekends by appointment



BIZ PROFILE

Balloontastic

1701 South Main Joplin, MO 64801

Phone: 417-529-2117

Facebook: www.facebook.com/Balloontastic1

GETTING YOUR DUCKS IN A ROW

Mark your calendar to attend the Carl Junction Chamber's next Lunch & Learn, Thursday, December 3 at noon at the Carl Junction Community Center. This month's Lunch & Learn is being sponsored by Simpson Funeral Home, and will be facilitated by attorney Christopher Dumm. Mr. Dumm will be speaking about getting your "Ducks in a Row." This is a general overview of estate planning and wealth protection options available today, including wills, trusts,



Medicaid and VA benefits. He will also be answer questions about planning for disability and long-term care.

Chris Dumm is an attorney with his practice limited to estate planning, elder law, business & tax planning and wealth protection. He received his B.S. degree in Business Administration at the University of Missouri-Columbia after completing a double major in Finance & Economics. Chris earned his J.D. from Regent University School of Law in Virginia Beach, VA. His bar memberships include Missouri,

Kansas, Arkansas, Texas and Virginia. He is a founding member of the Midwest Estate and Financial Planning Institute. Chris is an adjunct professor at MSSU and a frequent lecturer at education events for attorneys, accountants and other professionals.

The Lunch & Learn is a no cost opportunity to get your legal ducks in a row, and a free lunch is provided. Reservation is required to attend. To allow everyone to have questions answered, the classroom size for this Lunch & Learn is limited to twenty people.

RSVP to: cjchamberofcommerce@gmail.com

GRANITE! Your Hometown Granite Store!



Joplin Floor Designs, Inc. The store for your floor & more!

Celebrating 20 Years in Business!



2309 East 32nd Street Joplin, Missouri 417.659.8000 joplinfloordesigns.com

# 2015 CHAMBER MEMBERS

## - A -

Abbey Title  
Abundant Shine  
Adelman Travel  
Advance Family Eye Care  
Aflac District Sales Of  
Aire Fiber  
Aire Wear Graphics  
Allgeier Martin and Associates  
Alliance Insurance  
Alpha Air Center  
Always Buying Books  
American Desire Clothing  
Anderson Glass  
Arvest Bank  
Asbell, Dixie  
Asbell, Tom  
Atlas Risk Management  
ATS Consulting

## - B -

Bailey's Eats & Sweets  
Balloontastic  
Baugh, Marilyn - Jasper County Clerk  
Bee Social  
Beimdiek Insurance  
Big Nickel  
Bill Dunn's Machine Shop  
Bill's Electric Inc.  
Binky Guy Textiles  
Bittner Properties, LLC  
Blue's Bike Shop  
Brauburger Massage  
Breast Cancer Foundation of the Ozarks  
Briarbrook CID  
Bridgestone Tree Farm  
Brook Auto Sales  
Bruner Drug  
Building Blocks Daycare Center  
Bulldog Youth Athletic Association

## - C -

Campbell, Jeffrey  
Candy House  
Carl Junction CARES  
Carl Junction Cultivators Garden Club  
Carl Junction Family Medicine  
Carl Junction Helping Hands Ministry  
Carl Junction Lion's Club  
Carl Junction R-1 School District  
Carl Junction Senior Center  
Carl Junction United Methodist Church  
Carver Birthplace Association  
Casey's General Stores  
Cassavechia, Angie - Public Administrator  
Cassie Herlocker Photography & Design

Cell Phone Medics  
Chappel, Baron - Student Member  
Chappel, Kergan - Student Member  
Chateau Chic Finishes  
Children's Miracle Network  
Choice Marketing  
Circle T Collectibles/ CJ Auction Service  
City of Carl Junction  
Clark, Sharon

Classic Rock 99.1 KSEK FM  
Climate Tech  
Commerce Bank  
Community Bank & Trust  
Cook Home Rentals, Robert & Barbara  
Corner Greer Architects  
Country Caboose Wedding Chapel  
Countryside in the City Florists  
CreativDynamics  
Crosslines Ministry  
Crowder College  
Cutting Loose Graphics

## - D -

D & D Plumbing & Sewer  
DataGraphics Printing  
Davis, Charlie - State Representative  
Donham's Mowing Service  
Doug Hunt Consulting  
Downstream Casino Resort  
Doyle, Dr. Charles - Member At Large

## - E -

Edward Jones - Brad McIntyre  
Edward Jones - Jennafer Johnson  
Embassy Embroidery  
Empire District Electric Company  
Ernie Williamson Music  
Eye Scream Labs

## - F -

Farmer's Insurance - Ethan Giertz  
Federal Protection  
Flanigan, Tom - State Representative  
Fletcher Auto Group  
Florette by Countryside  
Footprints and Friends Preschool  
Forged Waterjet Fabrications  
Fortune East  
Fostering Hope  
Four States Office Products  
Foxberry Terrace Assisted Living  
Frack Chiropractic  
Fredrickson's Farms  
Front Page  
fstop Communications

## - G -

Gambino's

Garrett, Richard - Member-At-Large  
Girlfriends  
Gold Digger Pawn  
Golden Corral  
Good Dog Salon  
Gould Insurance Agency  
Granny Shaffer's Restaurants  
Green-Yates Appliance  
Gunlock Heating and Air

## - H -

H & R Block  
Habitat for Humanity  
Hance, Kathleen-Honorary Member  
Happy Soles Foot Care, LLC  
Harris, Dave- Member At Large  
Harry S Truman Coordinating Council  
Heath Brothers II Barber Shop  
Hedman Chiropractic  
Henkle's Ace Hardware  
Hensley, Joe - Member-At-Large  
Henson, Glenna  
Holcomb, Melissa - Circuit Clerk  
Holt, Stephen H. - Jasper County Collector  
HomePro  
Homestead Structures  
Honey, Jim  
Hoover, Connie - Jasper County Assessor  
Hope 4 You Breast Cancer Foundation

## - I -

Images in Tile  
Imagine Financial  
Instant Karma  
Ivan Mareth - Farm Bureau Insurance

## - J -

Java Dave's Executive Coffee Service  
Jay Hatfield Mobility  
Jeff Asbell Excavating & Trucking  
Jeunesse Skin Care  
JK Machining  
Joel's Automotive  
Joplin Blasters  
Joplin Family Y  
Joplin Floor Designs  
Joplin Globe  
Joplin Metro Credit Union  
Joplin NALA Read  
Joplin Outlaws Baseball  
Joplin Pool and Spa  
Joplin Regional Airport  
Joplin Regional Business Journal  
Joplin Share  
Joplin Supply Company  
JT's Burgers & Wings  
Just Call Jo Team-Keller Williams Realty



FEDERALLY INSURED BY NCUA

**Serving over 50 area Employer  
Groups which Include:**

- **CJ School Employees & Families**
- **City of CJ Employees & Families**

**417.623.9816**

3301 Texas • Joplin, MO 64804

**417.627.1000**

716 Pearl • Joplin, MO 64801

## 2015 CHAMBER MEMBERS (CONT.)

- K -**  
 KAB Electric  
 Knutzen, Lisa  
 KOAM/FOX 14  
 Kraft Insurance Services
- L -**  
 Lafayette House  
 Leggett & Platt  
 Lehman, Brandon-Pro 100 Realtors  
 Liberty Candy Kitchen  
 Local Color Art Gallery & Studio  
 Loretta Bailey Allstate Insurance  
 Lumpy's Express
- M -**  
 Marilyn Baugh - Jasper County Clerk  
 Marshall, Don  
 Mays, Vicki  
 McPherson (Judd) Law Office  
 Mediacom  
 MEI-Travel  
 Mense, Churchwell, Mense CPA's  
 Mercy Hospital  
 Mertens, Betty  
 Mertens, Richard  
 ME's Place Soul Food Café  
 Mid-Missouri Bank  
 Midnight Productions  
 Midwest Door  
 Midwest Regional Ballet  
 Missouri Enterprise  
 Missouri Southern State University  
 Missouri-American Water Company  
 MLM Custom Cabinets  
 Modine Manufacturing  
 Moss, Michael - Member At Large  
 Moss, Patty - Member At Large  
 My Destiny Homecare
- N -**  
 N-2 Publishing  
 National Federation  
 of Independent Business  
 NeoTech Solutions  
 New Hope Methodist Church  
 New-Aire Fireplace Systems  
 Nextar Broadcasting, KODE/KSN TV  
 Nicholas, John - Member-At-Large
- O -**  
 Oak Creek Realty  
 Orient Express  
 Origami Owl, Terra Gleason  
 Ozark Athletic Supply  
 Ozark Center  
 Ozark Gateway Association of Realtors  
 Ozark Memorial Park Cemetery &
- Mausoleum  
 Ozark Nursery
- P -**  
 Palms Massage and Day Spa  
 Parker Mortuary  
 Pathways United Methodist Church  
 Peace of Carl Junction  
 Pet Styles  
 Pete's Convenience Store  
 Phoenix Fired Art Gallery  
 Pickering, Charlotte - Jasper County Recorder  
 Pilkinton Painting Company  
 Pinnacle Bank  
 Powers, Mark  
 Preferred Employment Services  
 Price Cutter Grocery Store, Webb City  
 Primary Residential
- R -**  
 Randy's Drive In  
 Red Rhino Fireworks  
 Redwood Development  
 Reeve's Tire & Auto  
 Richard, Ron-Senator  
 Riem, Kelli  
 Roberts (Michael) Law Office  
 Rohmiller, Dr. Randall, DDS  
 Rohr, Denise - Jasper County Treasurer  
 Ronald McDonald House  
 Roof Power Solar  
 Roper KIA  
 Rose Gallery of Fine Art  
 Route 66 Movie Theater  
 Roy, Jean - Honorary Member  
 Rutledge, Karen - State Farm Insurance
- S -**  
 S & S Computers  
 Sam's Club  
 Sapp Design  
 Schuber Mitchell Homes  
 Service Recycling  
 Severinghaus, Barbara - Member At Large  
 Shear Designs Beauty Salon  
 Shield Financial - Larry Chalmers  
 ShowMe the Ozarks Magazine  
 Sidecars, Inc.  
 Sign Designs  
 Simpson Funeral Home  
 Smith, Tabitha Accounting & Tax  
 SNC Squared  
 Sonic Drive In  
 Southwest Missouri Bank  
 Spinning Wheels SK8 Center  
 Spiva Center for the Arts  
 Stice, Leona
- Stifel Nicholas  
 Stoke's Educational Services  
 Stone Village Children's Center  
 Stone's Corner Pharmacy  
 Stutesman Construction  
 Summerlin Studio  
 Surplus USA
- T -**  
 Tac-O-The Town  
 Tatum, Jill  
 Teeter, Linda Insurance Agency  
 The Run Around  
 The Title Place  
 Thirty-One Gifts - LaDonna Allen  
 This Is Studio Bliss  
 Thomas, Stephen Insurance Agency  
 Thompson, Rhonda - Pro 100 Realtors  
 Thornhill-Dillon  
 Total Electronics  
 Turnbull, Mark - Member At Large
- U -**  
 United Way SWMO/SEK  
 University of MO - Jasper County  
 Ext. Council  
 UPS Store #4970 & #2834  
 US Bank
- V -**  
 VFW Post 534  
 Villas at the Plaza  
 Vintage Vogue  
 Volk's Avanti Insurance
- W -**  
 Wild About Water!  
 Wildcat Glades and Audubon Center Oak  
 Wildwood Ranch, LLC  
 Wilhite Sign Company  
 WIN Publishing  
 WKW Enterprises  
 Workforce Investment Board  
 Wyandotte Nation Casino
- Z -**  
 Z 1-2 Call  
 Zaccardelli, Richard - Member At Large

### NEW MEMBERS

Balloonstastic  
 Bridgestone Tree Farm  
 Brook Auto Sales  
 Leggett & Platt

**Gambino's  
 Pizza®**

**417-649-7979**

1203 Pennell • Carl Junction



• DINE-IN • CARRY-OUT • DELIVERY



## MEMBER SPOTLIGHT: THE RUN AROUND RUNNING COMPANY

### BIZ PROFILE

The Run Around Running Company

422 South Main St  
Joplin, MO 64801

Phone: (417) 627-0057  
Website: runaround.co

The Run Around Running Company was founded in 2010 by Erik Bartlett. The Run Around was created to build a foundation for the active community in Joplin and surrounding area. The Run Around's top priorities are providing unmatched customer service and building lasting relationships. Erik Bartlett and his

staff pride themselves on their product knowledge and unique fitting process for whatever activity you're involved in. The Run Around partners on many local races including the Joplin Memorial Run, the Ronald McDonald House's Big Red Shoe Run and the Carl Junction Chamber of Commerce's Bluegrass 5K Banjo Run.

### COMMUNITY

## SHOP WITH A COP

Last year the Carl Junction Police Department served over two-hundred Carl



Junction children with their annual Shop with a Cop program. Each child receives \$100 to shop with, thanks to generous donors. This year's Shop with a Cop is Saturday, December 19 at 7 am, at the Wal-Mart at 15th & Rangeline. Volunteers are needed to help shop with the kids. To volunteer, donate, or for more information, please contact Alaina at the CJPD at 649-7070.

## CJFD SEEKS

The Carl Junction Fire Department is seeking items for their annual Christmas food baskets for the needy. Popular items included any canned item, flour, sugar and any non-perishable. Cash donations allow the CJFD to shop for items needed to complete baskets. Contact the CJFD at 417-649-6062.

## YOU'RE INVITED TO JINGLE & MINGLE!

For the third year in a row, ShowMe The Ozarks Magazine will host the Carl Junction Chamber of Commerce's December Chamber Connection Luncheon. And here's the best part, ShowMe the Ozarks magazine is picking up the tab for your lunch.

Join us Thursday, December 10 at 12 noon at the Carl Junction

Community Center, 303 N. Main. Bring your business cards and your

zine is providing the lunch, which includes food and drinks from

Granny Shaffer's Restaurant. The meal is free, but seating is extremely limited, and reservations are accepted on a "first come, first serve" basis.

RSVP to:

cjchamberofcommerce@gmail.com



appetite and be prepared to "Network at Noon" ShowMe the Ozarks maga-

# Working Together for Your Financial Future

**Edward Jones**  
MAKING SENSE OF INVESTING

Member SIPC



**Brad McIntyre**  
Financial Advisor

(417) 627-9250  
1200 Briarbrook Drive  
Suite C  
Carl Junction, MO 64834  
EdwardJones.com

COMMUNITY

2016 MEMBERSHIP RATES

The Carl Junction Area Chamber of Commerce board of directors has approved the Chamber membership rates for 2016.

Current members can expect to receive their invoice for 2016 dues in December. Membership renewals are due January 1, 2016.

BUSINESS

Small Employer (1-3 employees) \$60

Medium Employer (4-9 employees) \$120

Large Employer (10-19 employees) \$185

Major Employer (20+ employees) - \$240

OTHER

Personal Membership \$28

Non Profit Membership \$55

Religious Organization \$55

Government \$165



JOPLIN METRO CREDIT UNION presented a check to the Hope 4 You breast cancer organization. The check for \$1,763 represented funds raised by the local credit union and its employees. Accepting the check on behalf of the Hope 4 You breast cancer foundation was Sharon Clark, the president of Hope 4 You.



CARL JUNCTION C.A.R.E.S. presented proceeds from their 2015 fundraising efforts to the Breast Cancer Foundation of the Ozarks. Kristi Seibert accepted the check for \$5,821 on behalf of BCFO. Carl Junction C.A.R.E.S. presented a second check, also for \$5,821, to the Hope 4 You breast cancer organization

Randy's Bulldog Shake logo and image of a shake with whipped cream and nuts. Text: DINE IN OR CARRY OUT. 1201 EAST PENNELL • CARL JUNCTION • (417) 649.7732



## MEMBER SPOTLIGHT: BROOK AUTO SALES, LLC

### BIZ PROFILE

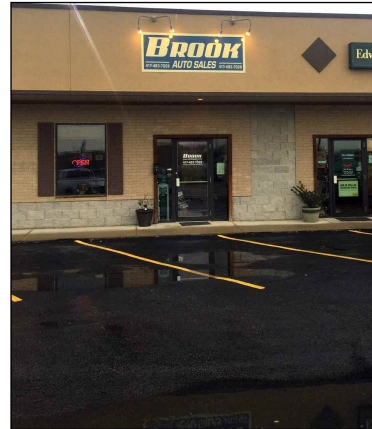
Brook Auto Sales, LLC

1200 Briarbrook Drive,  
Suite C

Phone: 417-483-7028  
or 417-483-7344

Email:  
paul-snodgrass@mchsi.com

Brook Auto Sales is owned and operated by Paul Snodgrass, and specializes in late model, high quality cars and trucks. Brook Auto Sales offers financing to qualified buyers. Brook Auto Sales is open Monday-Friday, 10:00 a.m. - 6:00 p.m., and Saturday, 9:00 a.m. to 6 p.m.



### COMMUNITY

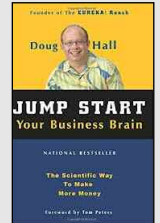
## JUMP START YOUR BUSINESS BRAIN

Ideal for inspiring marketers, artists, teachers, and anyone who needs fresh ideas for work and

home. Jump Start Your Brain helps readers crank up

both their cranium and career. Featuring smart and creative methods for providing better leadership, igniting sales and marketing, and realizing dreams with breakthrough innovations, this book teaches time-tested practices that generate creativity and innovation. Relying on the latest research, the author pinpoints which methods and techniques work best in today's high-stress world so readers can get a leg-up on the competition.

The Carl Junction Area Chamber of Commerce offers a free lending library of business-related books. No due dates, no fines. Free to members.



## UPCOMING DATES TO REMEMBER

- December 1 \_\_\_ Carl Junction City Council, 7:00 p.m., Carl Junction City Hall
- December 3 \_\_\_ CJACC Monthly Morning Networking Meeting, 7:30 a.m., Community Center
- December 3 \_\_\_ Lunch & Learn, 12:00 p.m., hosted by Simpson Funeral /Dumm Law, Community Center
- December 5 \_\_\_ CJ Lion's Club Community Breakfast, 7-10 a.m., CJ Community Center
- December 6 \_\_\_ Christmas Parade, 2:00 p.m., Downtown Carl Junction
- December 8 \_\_\_ Business After Hours, 4:30-6:30 p.m., Bridgestone Tree Farm
- December 10 \_\_\_ Christmas Luncheon, 12:00 p.m., hosted by ShowMe the Ozarks, CJ Community Center
- December 15 \_\_\_ DEADLINE, 5 p.m.: January Chamber Newsletter submissions
- December 15 \_\_\_ Carl Junction City Council, 7:00 p.m., Carl Junction City Hall
- December 19 \_\_\_ Carl Junction Shop with a Cop, 7 a.m., 15th & Rangeline Wal-Mart, Joplin

# HAPPY HOLIDAYS!

FROM THE CARL JUNCTION  
AREA CHAMBER OF COMMERCE

*red hot*  
advertising results

 CHOICE  
MARKETING

501 East 7th, Joplin | 417.626.0101 | choicemarketing.biz